

***Cassie Cordell Trueblood, et al., v. Washington State Department
of Social and Health Services, et al.***
Case No. C14-1178 MJP
Monthly Report to the Court Appointed Monitor

December 15, 2015

Behavioral Health and Service Integration Administration
Division of State Hospitals
PO Box 45050
Olympia, WA 98504-5050
(360) 725-2260
Fax: (360) 407-0304



TABLE OF CONTENTS

Background.....	Page 3
Class Member Status Information.....	Page 4
Class Member Status Data Tables.....	Page 7
Class Member Status Data Graphs.....	Page 10
Resources Required to Provide Timely Competency Services.....	Page 13
Key Accomplishments—November 2015.....	Page 19
<i>Trueblood</i> Implementation Steps Taken and Planned: November 2015.....	Page 21
Appendix A: Class Member—Evaluation Information for October 2015.....	Page 42
Appendix B: Class Member—Restoration Information for October 2015.....	Page 58
Appendix C: Class Member—Evaluation Information for November 2015.....	Page 66
Appendix D: Class Member—Restoration Information for November 2015.....	Page 79

Background

On April 2, 2015, the Court ordered the Department of Social and Health Services (DSHS) to file monthly reports with the *Trueblood* Court Monitor on efforts to comply with Court orders to provide timely competency evaluation and restoration services to Class Members:

“Defendants shall file a report with the Monitor on the fifth day of every month, which shall include:

- (1) the number of days between when a court ordered provision of competency services and when provision was completed, for each person ordered to receive competency services during the previous month;*
- (2) data regarding the number of evaluators, bed capacity, physicians, and other resources needed to provide timely competency services;*
- (3) the steps taken in the previous month to implement this order;*
- (4) when and what results are intended to be realized by each of these steps;*
- (5) the results realized in the previous month;*
- (6) the steps planned to be taken in the following month;*
- (7) certification by Defendants that they are fully compliant with all deadlines that became due in the previous month;*
- (8) Defendants’ estimate for when the wait times will reach seven days or less, and all data relied on in making that estimate; and*
- (9) any other information the Monitor informs Defendants is necessary for the Monitor to fully review Defendants’ actions and advise the Court.”*

The following report is submitted this 15th day of December, 2015. Through submission of this report to *Trueblood* Court Appointed Monitor, Dr. Danna Mauch, the Department of Social and Health Services certifies compliance with all deadlines due for the month of November 2015 in accordance with this court order.

Class Member Status Information

This report provides the class member data for Competency Services displayed in two periods—October 1, 2015-October 31, 2015 and November 1, 2015-November 30, 2015. The October data is considered “mature” and the November data is a first look data set. April 2015 is the baseline month for data analysis. As in previous reports, all data is reviewed using medians; however, as requested the information is also provided using averages.

The data is organized first into tables and graphs that show the trends forming over time. Given the less mature nature of the November data, graphs are shown only through the October data set. November data will be refreshed and included in the graphs in the December 15, 2015 report.

Specific class member information is included in the following appendices to this report:

- Appendix A: Class Member—Evaluation Information for October 2015
- Appendix B: Class Member—Restoration Information for October 2015
- Appendix C: Class Member—Evaluation Information for November 2015
- Appendix D: Class Member—Restoration Information for November 2015

Review of Data: April 1, 2015 through October 31, 2015

We have conducted an ongoing review of data over the last two months for consistency in methodology and to investigate a specific question raised by the Court Monitor on the receipt of discovery for competency restorations. As a result of this review, the monthly data for previous months has been updated in this month’s report. These updates reflect factors including a.) maturity of data: situations in which events occurred but were not recorded until after we pulled data for our monthly report, b.) review of the parameters for including orders for competency services in each respective month’s report, c.) review of cases in which an order for an in-jail evaluation was converted to an in-hospital evaluation, d.) review of outlier cases for relevant explanatory notes, and e.) two instances in which data from Eastern State Hospital were found to require corrections:

- In an all-parties meeting on Nov. 9, 2015, the Court Monitor, Dr. Mauch, raised a question regarding the receipt of discovery for restoration orders. At ESH, we had reported delays of approximately three days in receiving discovery for these orders. The Court Monitor asked if, for restoration orders, we do not already have the discovery as a result of performing the competency evaluation which preceded the order for competency restoration. We reviewed this point with staff at each hospital and confirmed that ordinarily we possess the relevant discovery documents when a restoration order is received. In limited circumstances, including where an evaluation is performed independently of DSHS or an additional cause number is added after the evaluation, there may be need to collect additional discovery records. On review we found that the dates that had been reported previously reflected a misinterpretation of two related fields that address the processing of discovery records. This issue was corrected for this month and prior months. Currently if ESH receives a restoration

order, and it already has the necessary discovery records, the date that discovery is received is entered as the date that the court order was received. We are continuing to review this data and the procedures for entering the date that discovery was received for restoration orders.

- Second, our review of the data handling procedures for our monthly reports uncovered an error regarding the completion of in-jail evaluations at ESH. Under the Court's order we have understood that an in-jail evaluation is completed when DSHS faxes the evaluation report to the referring court. However, data from ESH in prior reports reflected the date that an evaluator interviewed the defendant in jail. This error reflected a misinterpretation in our data coordination procedure for the monthly report, and was corrected.

The overall result of this review has not changed our understanding of the larger trends in our efforts to come into compliance with the Court's order. However, the individual points that have been investigated, and the resulting updates, have helped to clarify our understanding of the data. The challenges in coordinating data between the two hospitals also highlight the continuing need to develop a coordinated system for processing and analyzing data. We report below on progress in this area, including the hiring of a web developer and a business analyst who have begun work on a coordinated forensic data system.

Analysis of Data: April 1, 2015 through October 31, 2015

- Orders received in all areas remained relatively steady.
- The median and average times for completing Jail-based evaluations showed minor improvement at WSH. However, these were counterbalanced by a rise in completion times at ESH. These numbers prompted a more thorough review of the impact of new evaluators which is discussed later in this report.
- The percentage of evaluations completed within seven days shows a significant increase in October, although the over-all percentage continues to represent a minority of completions.
- Large swings in the average and median time periods for providing restoration beds can in some cases be seen from month to month at ESH. We understand this to reflect a policy at ESH in which an individual who has been admitted for an in-patient evaluation, and is found to be incompetent to stand trial, will be retained in the hospital for restoration services notwithstanding the current backlog.

Outlier cases in which defendants waited more than 100 days

We continue to look into outlier cases in which defendants waited more than 100 days, either to be provided an evaluation in jail, or to be admitted for restoration or for an in-patient evaluation. Often these cases were found to involve errors in the data. Last month we reported on class member 2307 who had been waiting 102 days and noted that this reflected an increasing backlog at ESH. His referral was completed in 111 days. In the November data for ESH, one evaluation class member has been found to be waiting 108 days (2216), and one restoration class member has been found to be waiting 102 days (2334). Additionally, at WSH, one restoration class member (2288) has been found to be waiting 101 days. Our review

suggests that the restoration wait times reflect a lack of bed capacity. We are continuing to look into the evaluation class member at ESH.

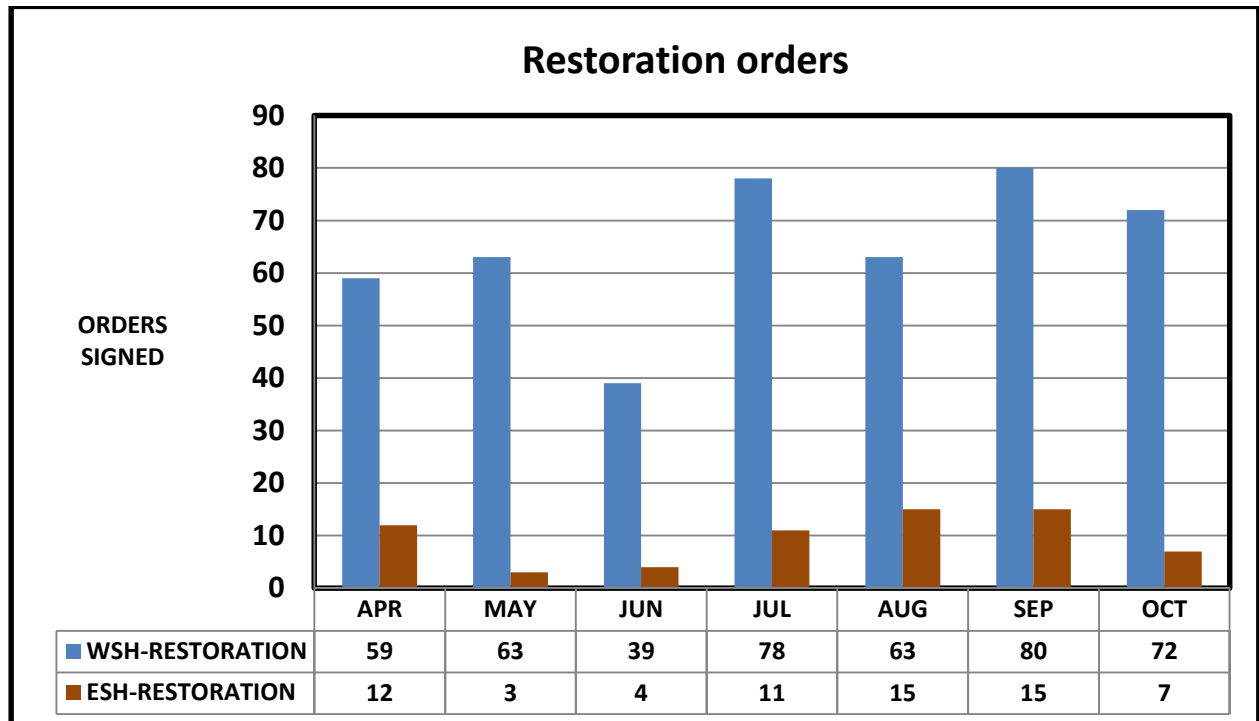
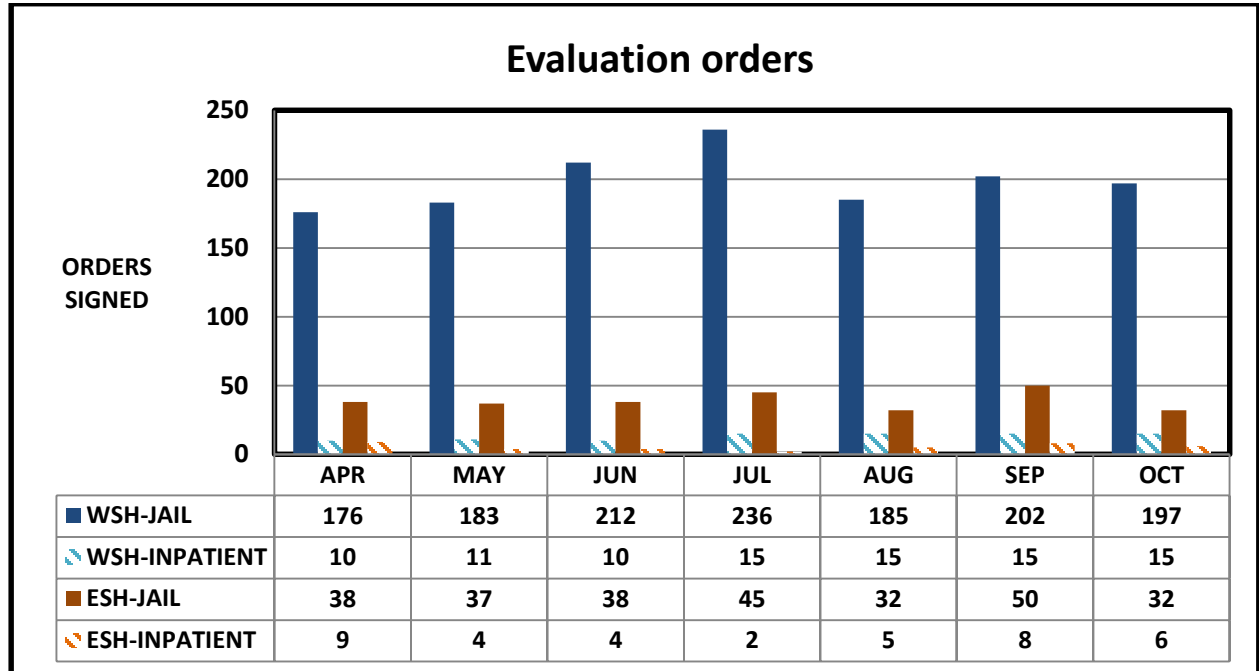
Class Member Status Data Tables (November data is “First Look” and subject to change)

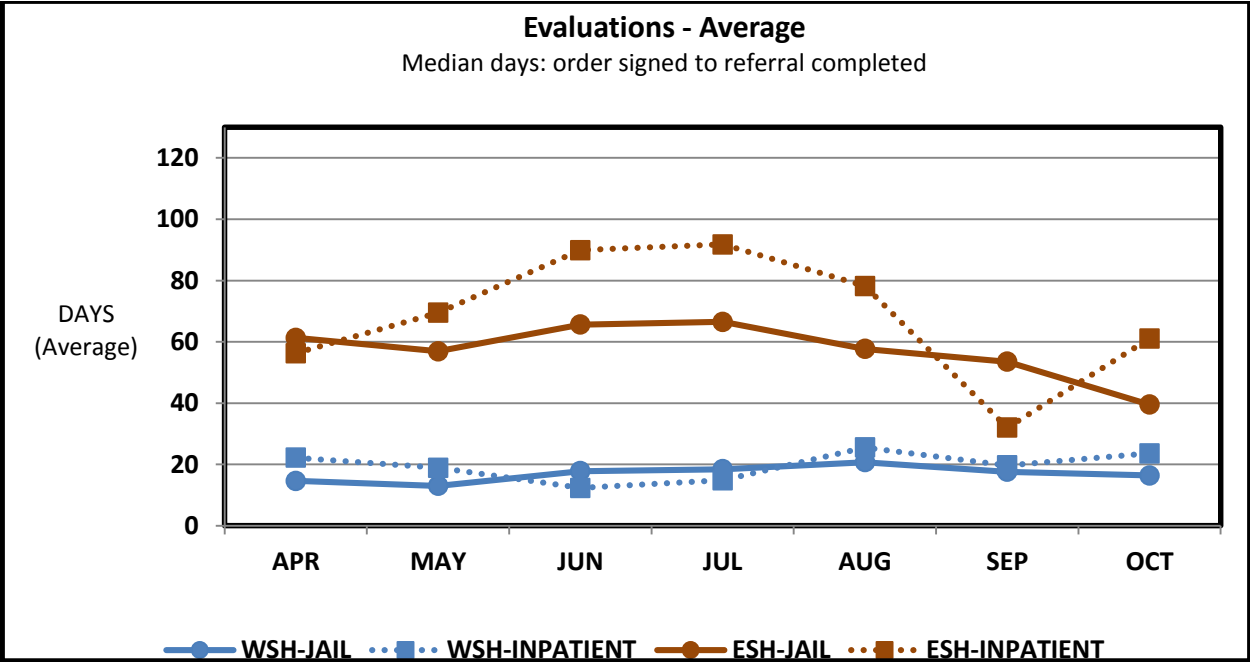
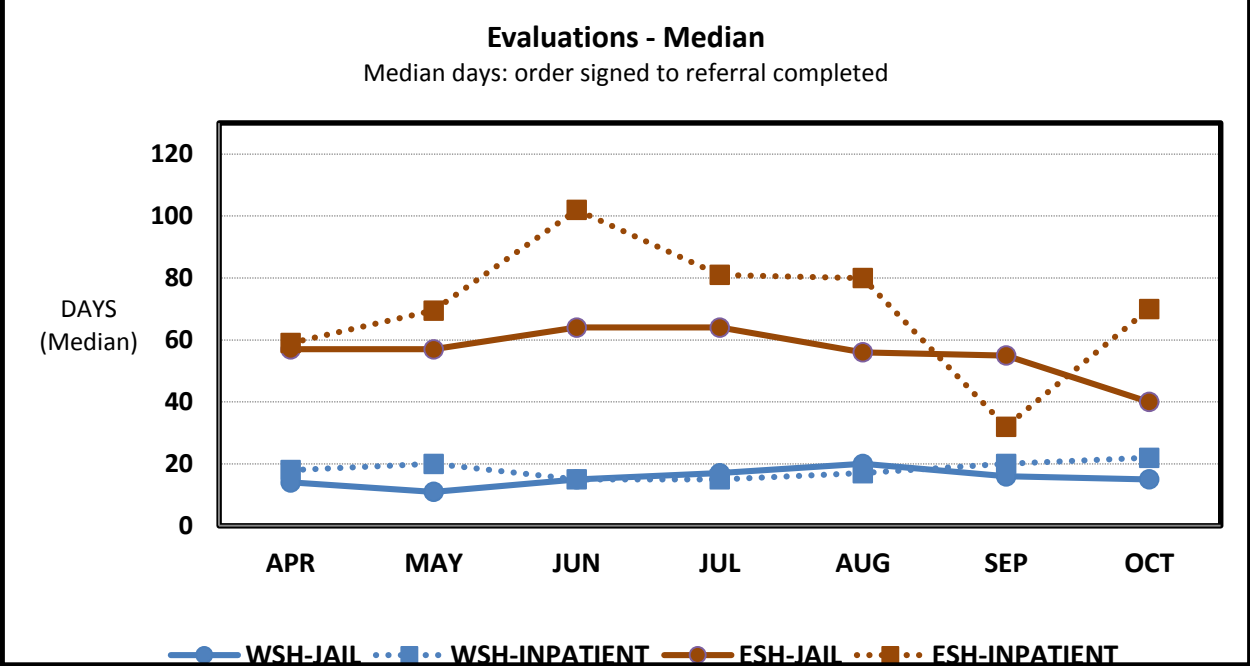
WESTERN STATE HOSPITAL		Court Orders Signed	Days from order signature to:								Percent complete within 7 days of order
			hospital receipt of order		hospital receipt of discovery		end of reporting month for incomplete referrals		completion		
			Average	Median	Average	Median	Average	Median	Average	Median	
Jail-based Evaluation	APR.	176	1.3	0.0	1.9	1.0	9.5	6.0	14.6	14.0	14%
	MAY	183	1.3	0.0	1.6	0.0	11.4	9.0	13.0	11.0	16%
	JUN.	212	1.7	0.0	2.1	1.0	10.9	8.0	17.8	15.0	10%
	JUL.	236	1.4	0.0	1.8	0.0	12.3	9.0	18.4	17.0	6%
	AUG.	185	1.9	0.0	2.2	0.0	13.4	11.0	20.7	20.0	7%
	SEP.	202	1.6	0.0	1.7	0.0	11.7	8.0	17.6	16.0	10%
	OCT.	197	1.9	0.0	2.0	0.0	16.7	15.0	16.4	15.0	19%
	NOV.	139	1.4	0.0	1.5	0.0	21.7	17.0	15.2	13.0	29%
Inpatient Evaluation	APR.	10	5.8	1.0	5.8	1.0	10.7	7.0	22.2	18.0	22%
	MAY	11	2.9	2.0	2.9	2.0	11.4	13.0	18.9	20.0	8%
	JUN.	10	3.0	1.0	3.0	1.0	14.0	12.0	12.3	15.0	25%
	JUL.	15	3.5	1.0	3.5	1.0	16.6	9.0	14.8	15.0	20%
	AUG.	15	4.5	1.0	4.5	1.0	10.0	11.0	25.5	17.0	7%
	SEP.	15	2.6	1.0	2.6	1.0	15.1	16.0	19.7	20.0	11%
	OCT.	15	1.5	1.0	1.5	1.0	19.0	19.0	23.6	22.0	0%
	NOV.	11	1.7	1.0	1.7	1.0	20.2	18.0	22.4	21.0	7%
Inpatient Restoration	APR.	59	1.8	1.0	1.8	1.0	37.2	16.0	38.6	44.0	24%
	MAY	63	1.8	1.0	2.1	1.0	35.9	19.0	26.2	15.0	25%
	JUN.	39	1.7	1.0	2.1	1.0	16.8	8.0	34.2	25.0	7%
	JUL.	78	1.7	1.0	2.1	1.0	16.1	10.0	20.8	15.0	25%
	AUG.	63	2.1	1.0	2.1	1.0	22.5	19.0	23.6	33.0	24%
	SEP.	80	1.7	1.0	2.0	1.0	24.3	15.0	23.0	14.0	26%
	OCT.	72	1.8	1.0	2.1	1.0	21.2	23.0	32.1	45.0	20%
	NOV.	43	1.3	1.0	1.5	1.0	35.5	33.0	36.6	49.0	18%

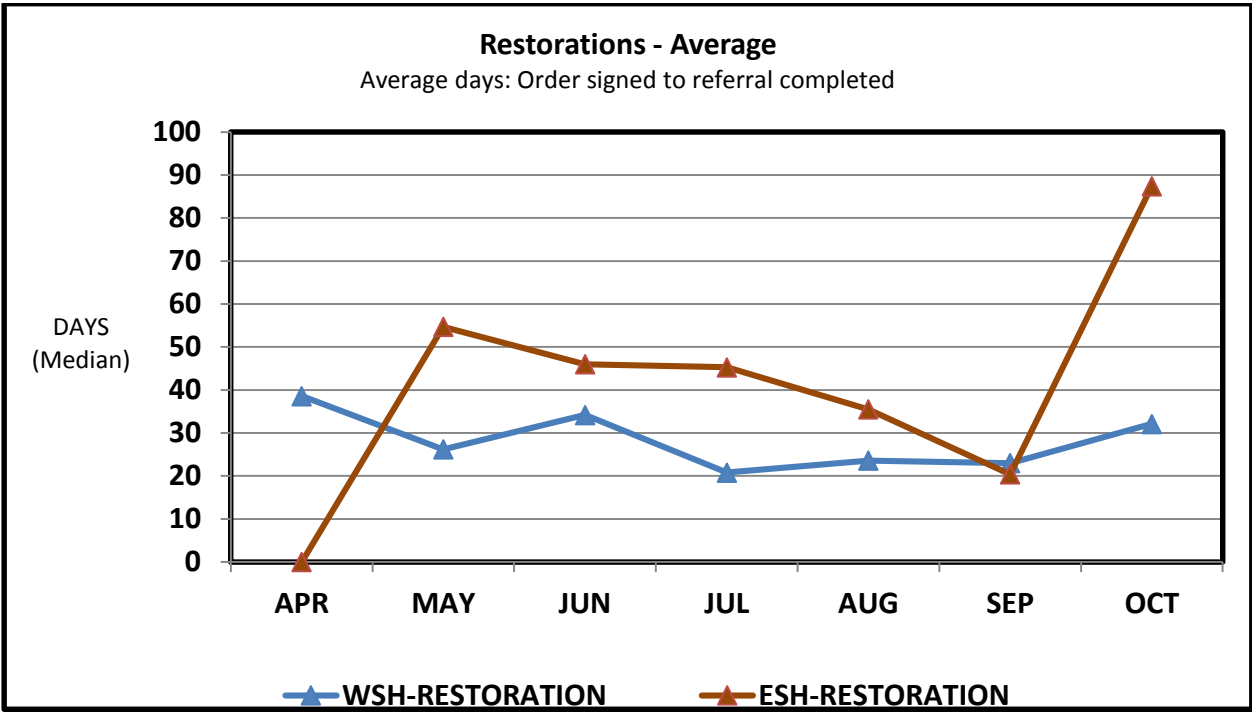
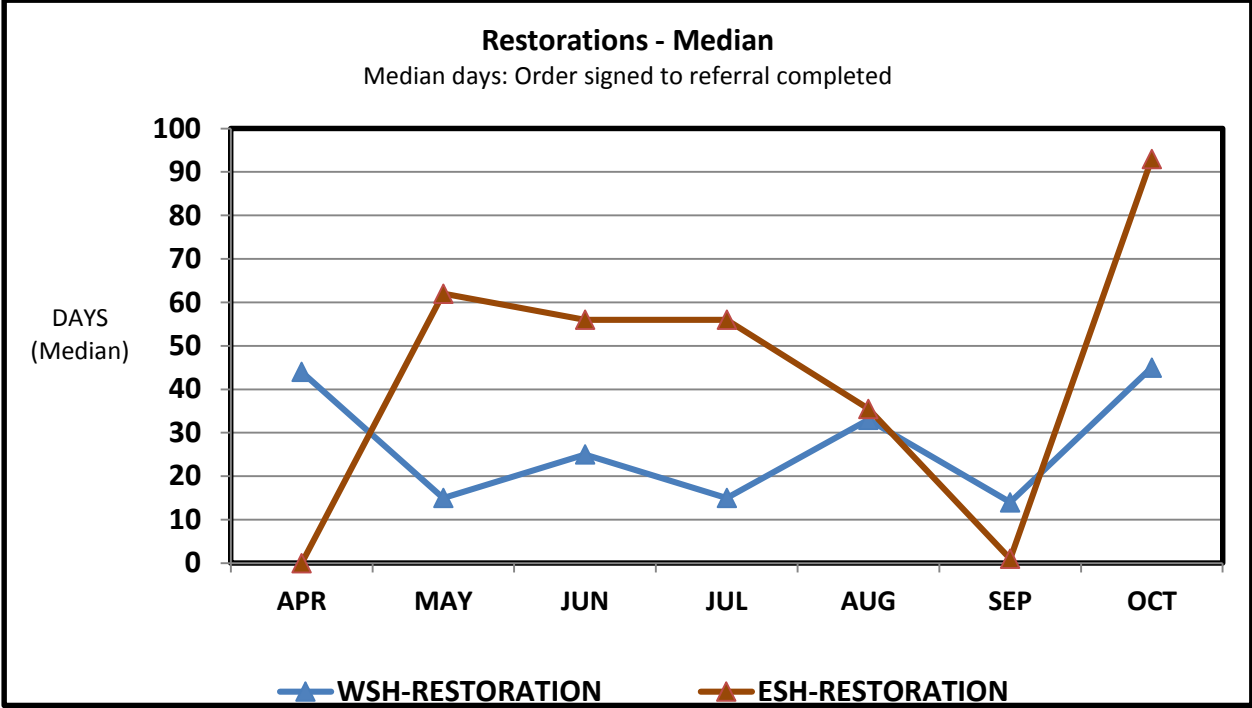
EASTERN STATE HOSPITAL		Court Orders Signed	Days from order signature to:								Percent complete within 7 days of order
			hospital receipt of order		hospital receipt of discovery		end of month for incomplete referrals		completion		
			Average	Median	Average	Median	Average	Median	Average	Median	
Jail-based Evaluation	APR.	38	4.6	1.0	8.6	5.0	28.1	28.0	61.3	57.0	0%
	MAY	37	4.3	1.0	8.8	6.0	37.0	33.0	56.9	57.0	0%
	JUN.	38	4.1	1.0	8.3	6.0	38.0	39.0	65.6	64.0	0%
	JUL.	45	4.2	1.0	8.9	6.0	32.6	30.0	66.5	64.0	0%
	AUG.	32	2.4	1.0	6.4	5.0	33.4	32.0	57.7	56.0	3%
	SEP.	50	2.3	1.0	4.9	4.0	29.1	14.0	53.5	55.0	3%
	OCT.	32	1.9	0.0	4.9	4.0	16.4	10.0	39.5	40.0	3%
	NOV	30	1.6	0.0	5.2	4.0	22.5	20.0	45.6	50.0	2%
Inpatient Evaluation	APR.	9	8.9	1.0	13.9	5.0	47.9	43.0	56.3	59.0	0%
	MAY	4	10.1	1.0	14.2	5.0	65.8	61.0	69.5	69.5	0%
	JUN.	4	7.7	1.0	11.1	5.0	75.2	68.0	89.9	102.0	0%
	JUL.	2	7.5	1.0	11.4	5.0	50.9	14.0	91.8	81.0	0%
	AUG.	5	10.2	1.0	19.6	5.0	44.5	31.0	78.2	80.0	0%
	SEP.	8	6.7	1.0	10.2	4.0	42.6	47.0	32.0	32.0	0%
	OCT.	6	2.0	1.0	7.9	6.0	28.9	16.0	61.1	70.0	0%
	NOV	1	5.1	0.0	11.9	8.0	45.0	41.0	86.0	86.0	0%
Inpatient Restoration	APR.	12	6.8	1.0	8.1	1.0	25.3	22.0	0.0	0.0	100%
	MAY	3	6.3	1.0	7.9	2.0	35.0	41.0	54.7	62.0	0%
	JUN.	4	0.6	1.0	1.8	1.0	45.3	39.0	46.0	56.0	20%
	JUL.	11	1.3	0.0	4.5	2.0	16.2	11.0	45.3	56.0	33%
	AUG.	15	1.6	0.0	5.7	3.0	26.4	27.0	35.5	35.5	50%
	SEP.	15	1.5	0.0	4.6	1.0	37.2	35.0	20.4	1.0	57%
	OCT.	7	3.2	0.0	6.4	4.0	45.6	37.0	87.4	93.0	0%
	NOV.	8	3.3	0.0	5.5	4.0	49.4	47.0	94.0	93.0	0%

TOTALS BOTH HOSPITALS		Court Orders Signed	Days from order signature to:								Percent complete within 7 days of order
			hospital receipt of order		hospital receipt of discovery		end of month for incomplete referrals		completion		
			Average	Median	Average	Median	Average	Median	Average	Median	
Jail-based Evaluation	APR.	214	2.1	0.0	3.5	1.0	17.8	10.0	20.3	14.0	12%
	MAY	217	2.1	0.0	3.2	1.0	22.1	13.0	18.2	12.0	14%
	JUN.	250	2.3	1.0	3.6	1.0	20.8	13.0	24.1	17.0	9%
	JUL.	281	2.0	0.0	3.3	1.0	17.9	11.0	26.5	19.0	5%
	AUG.	217	2.0	0.0	3.0	1.0	19.7	13.0	25.4	21.0	6%
	SEP.	252	1.8	0.0	2.5	1.0	16.0	9.0	22.9	18.0	9%
	OCT.	229	1.9	0.0	2.5	1.0	16.6	11.0	19.2	16.0	17%
	NOV.	168	1.5	0.0	2.4	1.0	21.9	17.0	22.1	16.0	23%
Inpatient Evaluation	APR.	19	7.8	1.0	11.0	3.0	39.9	33.0	45.1	48.5	9%
	MAY	15	7.3	1.0	9.7	3.0	55.3	47.0	50.9	25.0	5%
	JUN.	14	5.9	1.0	8.0	3.0	65.0	54.0	44.4	18.0	15%
	JUL.	17	5.7	1.0	7.8	3.0	49.9	15.0	14.8	15.0	20%
	AUG.	20	6.9	1.0	8.4	2.0	33.0	17.0	53.9	29.0	5%
	SEP.	23	4.3	1.0	5.7	1.0	39.4	22.0	20.4	20.0	10%
	OCT.	21	2.4	1.0	4.3	1.0	27.6	19.0	30.8	24.0	0%
	NOV.	12	2.9	1.0	5.4	1.0	36.2	33.0	26.4	21.0	7%
Inpatient Restoration	APR.	71	1.5	0.0	2.2	1.0	35.3	16.0	37.6	43.0	26%
	MAY	66	1.5	0.0	1.9	0.0	35.8	20.0	27.8	18.0	24%
	JUN.	43	1.6	0.0	2.0	1.0	20.6	13.0	34.9	25.0	20%
	JUL.	89	1.4	0.0	1.9	0.0	16.1	10.0	24.5	20.0	26%
	AUG.	78	1.9	0.0	2.4	0.0	23.5	20.0	24.0	33.0	25%
	SEP.	95	1.6	0.0	2.1	0.0	27.6	21.0	22.7	13.0	29%
	OCT.	79	2.1	1.0	2.9	1.0	26.9	25.0	32.1	45.0	20%
	NOV.	51	1.8	1.0	2.4	1.0	39.6	35.0	43.6	49.0	18%

Class Member Status Data Graphs - April through October







Resources Required to Provide Timely Competency Services

Need Projections and Bed Capacity

The investment made by the Legislature in the 15-17 biennial budget and the short and long-term strategies that are being undertaken will enable Washington to provide competency services within the seven-day time frames established by the Court. Washington is making every effort to provide competency services within the seven-day standard as soon as is possible.

At this time we have hired eleven of thirteen new forensic evaluators allocated under the biennial budget, and expect the timelines for forensic evaluations to shorten as a result. We are continuing to measure the impact of these new evaluators, including an individualized assessment of evaluations performed. Recent reports show that in November, 35 evaluations were performed by newly hired evaluators at Western State Hospital and 6 were performed by newly hired evaluators at Eastern State Hospital. An additional five evaluations have been performed by WSH evaluators in Yakima as part of an agreement between the hospitals that also involved the transfer of one unfilled evaluator FTE from ESH to WSH. However, the new evaluators have not all reached full capacity, and their training has required additional time to be dedicated from experienced evaluators in recent months. Additionally, their impact has been spread across evaluations required in the jails and hospitals. For instance, newly funded evaluators at WSH have performed a total of 65 hospital-based evaluations from July through November, and newly funded evaluators at ESH have performed a total of 44 hospital-based evaluations over the same period. These in-hospital evaluations are critical for opening needed bed-space to come into compliance with the Court's order. We have also yet to be able to fill one funded evaluator positions at ESH, and one funded evaluator position at WSH. Because of these factors, all of which affect our ability to comply with the Court's order, and based on our ongoing review of data, we expect to have resources in place to process most evaluations within 7 days at both hospitals by March 1, 2016. At that time, we expect to have eliminated the backlog of evaluation referrals at each hospital, and to be able to begin processing incoming referrals upon receipt of all necessary materials from the referring courts. Where complicating factors, such as the unavailability of defense counsel, require more than seven days to complete an evaluation, and the good cause exception does not apply, our ability to admit patients in compliance with the Court's order on day eight will depend on the availability of bed space for admission. The ongoing development of the necessary bed space is discussed immediately below.

For competency restoration services, our ability to open new beds at Western State Hospital (WSH) has been slowed by a recent review by the Centers for Medicare and Medicaid Services (CMS) in which six notices of Immediate Jeopardy were issued to hospital leadership. In November, CMS accepted the hospital's plan for abating the immediacy of these notices. On December the plan of correction for the most recent survey by CMS was submitted for their review. However, based on their findings, we have determined that it is not safe to open 30 competency restoration treatment beds and 30 civil beds at WSH at this time as scheduled. In order to meet the commitment to provide the 30 beds planned for WSH, Washington is

continuing to pursue a contract to operate up to 30 beds at Maple Lane, a former juvenile rehabilitation facility. The Maple Lane facility is planned to become operational in April, 2016.

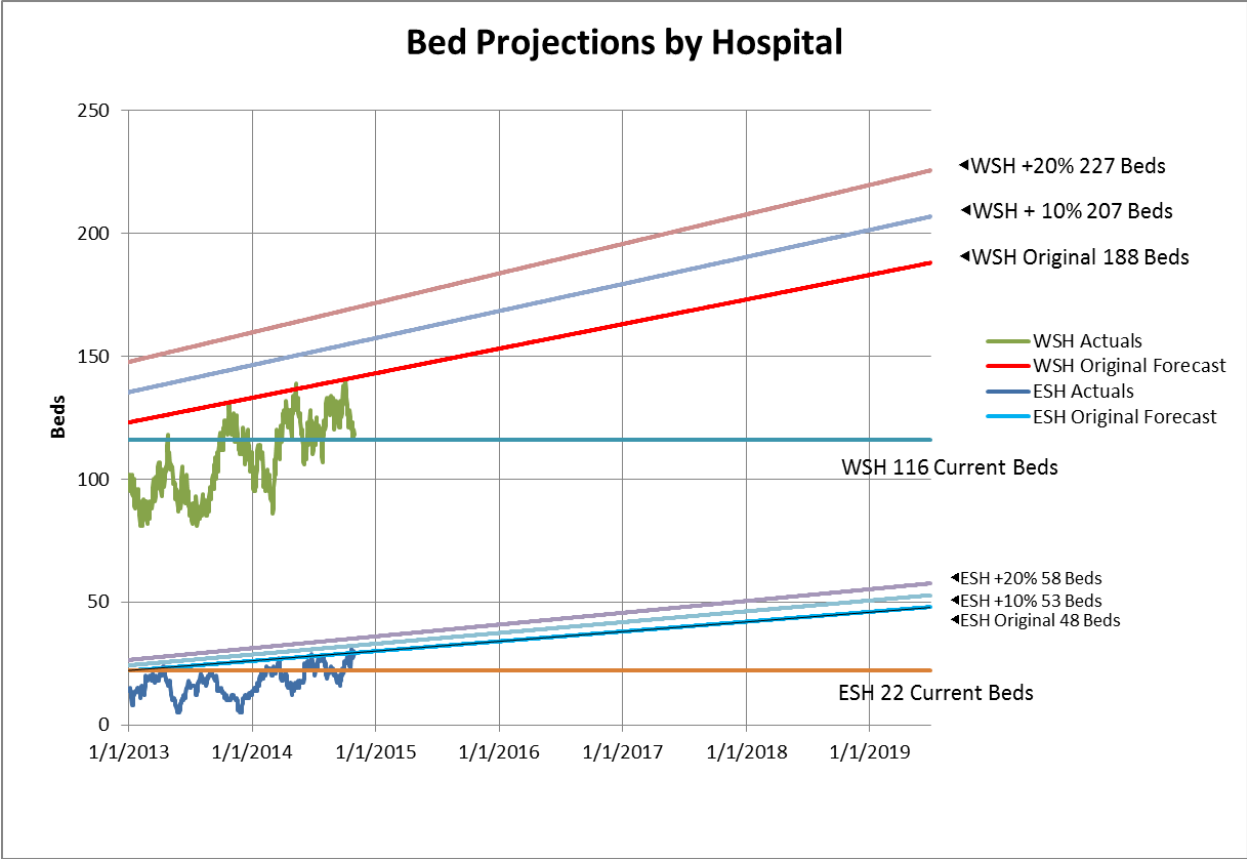
In addition to contracting for 30 beds at Maple Lane, Washington continues on track to provide competency restoration treatment as follows:

- 15 beds are currently available at WSH;
- 30 beds at Eastern State Hospital are expected to be operational by January, 2016; and
- 24 beds in Yakima are expected to be operational by March, 2016.

Moving patients into some of these beds is contingent on identifying sufficient patients at WSH who qualify for the new beds, and on bringing on sufficient staffing at ESH. However, based on this information, Washington anticipates being in substantial compliance with the Court's requirements for competency restoration and competency evaluation services within two months of the opening of the Maple Lane facility.

The anticipated compliance dates are based on the estimates and data, detailed below, that were included in the Long Term Plan dated July 2015 and subsequent monthly reports.

Fiscal and program staff from DSHS and the Washington State Office of Financial Management modeled additional bed capacity needed to meet a seven-day standard for admission with assumptions of increases in demand at ten percent and twenty percent. The following graph illustrates the model as applied to WSH and ESH.



For mentally ill defendants ordered to receive competency restoration treatment, additional inpatient forensic hospital bed capacity must be developed or made available. Based on projections in the chart above, it is estimated that compliance with a seven-day standard will require 90 beds during the 15-17 biennium.

2015-2017 Biennial Budget to Support Improvements to the Forensic Mental Health System

The two-year operating budget for the period of July 1, 2015 to June 30, 2017 (hereafter referred to as the 15-17 biennial budget), enacted by the Legislature on June 29, 2015 and signed by Governor Jay Inslee on June 30, 2015, includes an investment of \$40.5 million in new funding. Table One details the funding provided in the 15-17 biennial budget.

Table One: New Forensic Mental Health System Funding in the 15-17 Biennial Budget

Budget Item	FTE's	Dollars (Millions)
Competency Evaluation Staff	18.0	\$ 4.67
Competency Restoration Beds	129.2	\$26.86
Non-Felony Diversion	0.0	\$ 4.81
Office of Forensic Mental Health	11.0	\$ 4.18
Total	158.2	\$40.52

Table Two shows the increases for forensic evaluator and competency restoration bed capacity and Table Three details the specific new staff positions funded in the 15-17 biennial budget.

Table Two: Increases in Forensic Evaluators & Competency Restoration Beds in 15-17 Biennial Budget

Site	April 2015 Forensic Evaluator Positions (FTE)	15-17 Biennial Budget Increase (FTE)	Total Forensic Evaluator Capacity (FTE)	% Increase (FTE)	\$ Increase (Millions)	April 2015 Capacity (Beds)	15-17 Biennial Budget Increase (Beds)	Total Capacity (Beds)	% Increase (Beds)	\$ Increase (Millions)
ESH	6	5	11	83%	\$1.41	22	15	37	68%	\$13.41
WSH	24	8	32	30%	\$2.25	116	45	161	39%	\$4.47
TBD	N/A	N/A	N/A	N/A	N/A	0	30	30	N/A	\$8.97
Total	30	13¹	43	40%	\$3.66	138	90	228	65%	\$26.86

Table Three: Specific new Staff Funded in the 15-17 Biennial Budget

Position	Funded FTE	Description
Full Time Equivalents (FTE)	129.2	Direct care staff to operate 90 additional Competency Restoration treatment beds
Forensic Evaluators	13	Forensic Psychologists to conduct forensic evaluations
Forensic Evaluator Supervisor	2	Supervisory and leadership support for Forensic Evaluators
Forensic Evaluator Support	3	Staff to perform administrative and clerical tasks
Director of the Office of Forensic Mental Health	1	Lead Forensic Mental Health Services operations, as recommended in the forensic services consultant report
Data Manager	1	Develop standardized data reports to inform fiscal and program operations and improve data integrity as recommended by JLARC and Groundswell

¹ This figure does not include five Full Time Equivalents (FTE) for supervisory and administrative support that also are funded in the 15-17 biennial budget

Position	Funded FTE	Description
Data Analysts	2	<ul style="list-style-type: none"> Standardize systems to track and report program outcome data for competency and NGRI services Build and maintain a statewide model for bed utilization and staffing needs Create and maintain a centralized system for managing wait lists and admission decisions Recommended by JLARC and Groundswell
Technology Solutions Support	2	<ul style="list-style-type: none"> Build a technology solution to establish a common platform to transmit data between the State Hospitals and over 240 different jurisdictions to improve timeliness Provide hands-on partner training across the system 1 position funded only for the 15-17 biennium
Competency Restoration Specialist	1	<ul style="list-style-type: none"> Develop alternative community-based competency restoration program options to address growing demand for forensic service Coordinate development of criteria and a screening process to identify individuals appropriate to receive services in this setting Quality assurance oversight of services provided in alternative settings Recommended in Groundswell
Workforce Development	2	<ul style="list-style-type: none"> Standardize and improve quality of competency services and NGRI treatment Develop curriculum and provide training to the forensic psychology workforce across the state Provide ongoing consultation and QA Recommended in Groundswell
Liaison and Diversion Specialist	1	<ul style="list-style-type: none"> Liaison with courts, jails, community mental health programs, RSNs, state hospitals and others to coordinate efforts to comply with <i>Trueblood</i> order Create systems to ensure effective and efficient delivery of statewide forensic services Coordinate stakeholder efforts to divert individuals with mental illness from criminal justice involvement Coordinate community based treatment Recommended by JLARC and the Groundswell
Implementation Project Manager	1	<ul style="list-style-type: none"> Manage implementation to ensure requirements of the <i>Trueblood</i> decision are met in a timely manner Project position for 15-17 biennium.
Trueblood Report Manager	0	<ul style="list-style-type: none"> Report analysis, preparation and submittal

		<ul style="list-style-type: none">• Position not funded in the biennial budget, has been established and filled within existing funding to support <i>Trueblood</i> implementation• Project position for the 15-17 biennium.
--	--	---

Trueblood Key Accomplishments--November 2015

HIRING

Hospital Staff and Evaluators:

- We continue to focus on hiring to expand both our evaluation and restoration capacity. Recruiting, hiring and retaining a sufficient number of qualified staff to fill psychiatrist, psychologist, registered nurse, and social worker positions needed to fill vacancies to safely operate new and existing wards at the state hospitals has been an ongoing challenge.
- Staffing Updates:
 - As of 11/30/15, 8 of the 8 new WSH evaluator positions are filled and licensed.
 - As of 11/30/15, 3 of the 5 new ESH evaluator positions have been filled.
 - In early December, one of the ESH positions was moved to WSH where it can more easily be filled. As a result, WSH has 8/9 new positions filled and ESH has 3/4 new positions filled. Meanwhile, two evaluators from WSH are performing evaluations in Yakima. In combination, these arrangements are intended to raise capacity at both hospitals.

DSHS HQ:

- Forensic Services Director: Following town hall meetings with the three top candidates in October, no candidate was identified for selection. A new posting and additional recruitment efforts are currently under review.
- A Web developer has been hired to work on a forensic data system. A related business analyst position was also filled on 11/16/15 to support the forensic system project for electronic coordination of forensic services.

Recruitment:

- Launched nationwide advertising campaign for Psychiatrists on November 30. Currently running 30-day ads in APA, WSPA, AAGP, JAMA and the Psychiatric Times. All these advertising venues were recommended by either WSH doctors or the WSH Medical Director. A similar campaign aimed at recruiting Psychiatrists for ESH was to have been launched in January through the Psychiatric Times. At this time we are not sure if publication deadlines were met by Communications Division. Although both advertising campaigns were aimed at recruiting Psychiatrists for open positions, the underlying strategy was to market the availability of positions at both ESH and WSH.
- Based upon the success of the Nurse hiring event in Spokane in early November, a second RN and LPN specific hiring event has been scheduled for January 28. Interview teams composed of managers from the Nurse Executive's office at ESH will be available from 10AM until 5PM to speak with any qualified candidate who shows up. To ensure ample participation, senior Recruiters at both HQ and in the Eastern Region will do extensive outreach through LinkedIn to identify and then invite nurses to the event. Additional outreach will be done by Employment Security Departments' WorkSource program staff in Spokane. Ads in local newspapers and on Internet music station Pandora will again be used to augment participation.

- Dedicated BHSIA Recruiter, Ted Koska, is spending at least one day per week on the WSH campus. The objective is to interact with as many staff and managers as possible and to learn about the culture of the institution so he can better recruit for open positions. Koska has also made two trips to ESH since his hire in late September 2015 with a third scheduled in late-January 2016.
- WSH has established a Recruitment Center on the south end of the WSH campus and has been interviewing RN and LPN candidates on a regular basis in that facility since mid-October 2015. In the month of November alone, the team interviewed 64 nurse candidates making offers to 49. Efforts are now underway to streamline the recruitment, interviewing, hiring and on-boarding processes for WSH nursing staff. Lessons learned from such streamlining can and will be used for other recruitment efforts at the hospital.
- Ted Koska has been working with the recruiters at the WSH HR office. Focus has been on writing targeted job announcements, sourcing competitive candidates, assessing applicant pools, consulting with hiring managers and using contemporary recruiting techniques and methodologies. Improvement has been seen in the recruitment of Psychologists and MHTs as well as other hard-to-place positions.

EXTRA DUTY PAY

- Arrangements for extra duty pay for forensic evaluators were finalized so that a letter outlining the new provisions could be sent out in early December. Provisions allow for additional straight time pay under specified circumstances for evaluators who perform evaluations above the targets set at each hospital.

STANDARDIZATION OF COURT ORDERS

- The AOC of the Courts standardized order workgroup met several times during the month of November, and submitted 12 orders for consideration by the AOC Pattern Form Committee.

REDUCING STATEWIDE EVALUATION WAIT TIMES

- We continue to pilot assigning evaluators in multiple counties with the intention of rotating who provides the support multiple times a year. Weekly stationed evaluators continue visiting Yakima, Kitsap and Lewis counties. An evaluator began work in Snohomish County Jail November 3, 2015.
- Pierce County has agreed to assign two dedicated defense attorneys to help streamline the evaluation process by bypassing defense attorney scheduling conflicts. These attorneys will be devoted to the mental health population and will be excused from trial duties.
- An email was sent to individual County Commissioners on October 19, 2015 regarding Community Competency Evaluations. Counties interested in program participation were asked to submit the name of individuals in their communities who should be involved in conversations related to the determination of data elements that should be collected each month. Submissions were due October 26, 2015.

RESIDENTIAL TREATMENT FACILITIES

- Yakima: DSHS has now completed negotiations and finalized a contract with Central Washington Comprehensive Mental Health, to open up 24 Competency Restoration beds at the currently vacant Yakima County Correctional Center, effective March 1, 2015.
- DSHS also continues to work towards opening an additional 30 Competency Restoration beds at the Maple Lane School, as a Residential Treatment Facility. DSHS is actively engaged in contract negotiations with a prospective service provider and is working to obtain the appropriate building use permit and licensure. A Memorandum of Understanding with the Department of Corrections is final and signed. Construction design has been completed and remodeling work has begun.

Trueblood Implementation Steps Taken and Planned—November 2015

Task	Key Milestones	Status / End Dates	Anticipated Outcome & Assumptions	Results Achieved & Barriers to Completion
Court Appointed Monitor Coordination				
Monthly Reports	Released Nov. report	Complete	<ul style="list-style-type: none"> • Maintain compliance with the Court • Use data to review and improve the provision of forensic services 	<ul style="list-style-type: none"> • Released November report to Stakeholders following review of Court Monitor
	Submit Dec. Report	12/15/2015		
	Post-Submission Review	12/17/2015		
Legislative Coordination				
Implement Second Engrossed Second Substitute Senate Bill (2E2SSB) 5177	Develop implementation plan	TBD	<ul style="list-style-type: none"> • Bill was enacted to provide remedies for improving the timeliness of forensic mental health services. • Implement and operationalize the changes 	<ul style="list-style-type: none"> • On July 10, 2015, DSHS and Governor’s office hosted Planning Meeting to discuss SB 5177 implementation, the 2015-2017 budget, and cross-system collaboration for the State’s forensic mental health system. The governor’s office invited members of the Tribes, the Counties, Public Defenders, Prosecutors, the
	Establish subgroups and an oversight committee as needed	TBD		

Task	Key Milestones	Status / End Dates	Anticipated Outcome & Assumptions	Results Achieved & Barriers to Completion
	<p data-bbox="422 289 665 496">Onboard Implementation Liaison position to facilitate cross system collaboration work</p> <p data-bbox="422 548 665 1075">Propose agency request legislation with technical fix regarding authority for criminal courts to hold individuals in jail up to 7 days while awaiting transport to state hospital for evaluation for civil commitment under RCW 10.77.086(4) after criminal charges dismissed.</p>	<p data-bbox="690 376 833 409">Complete</p> <p data-bbox="690 799 833 831">In progress</p>	<p data-bbox="858 279 1428 344">brought about by the bill through engagement of partners</p>	<p data-bbox="1453 279 2022 483">Courts, the Administrative Office of the Courts, the Attorney General's Office, the State Legislature, Disability Rights Washington, NAMI Washington, and County Jails and Sheriffs. Workgroups reviewed specific goals and hurdles.</p> <ul data-bbox="1453 526 1980 698" style="list-style-type: none"> • DSHS has completed required work for submission to the AOC Pattern Forms Committee. The workgroup has agreed to continue its work to standardize orders that were identified as priority orders.
<p data-bbox="203 1146 401 1351">Provide regular implementation and progress updates to Legislative body and staff</p>	<p data-bbox="422 1182 665 1318">Schedule twice monthly update conference call or in-person meeting</p>	<p data-bbox="690 1237 833 1269">Ongoing</p>	<ul data-bbox="858 1133 1386 1373" style="list-style-type: none"> • Keep Legislators and staff up-to-date on status of Trueblood and SB5177 implementation • Provide opportunity to address questions related to monthly reports or the long-term plan 	<ul data-bbox="1453 1237 1890 1269" style="list-style-type: none"> • Biweekly meetings are being held.

Task	Key Milestones	Status / End Dates	Anticipated Outcome & Assumptions	Results Achieved & Barriers to Completion
	Testify before House judiciary and Appropriations Committees on Trueblood and 5177 implementation status	11/19/2015		
Consult with DOH about draft legislation requiring DOH certification of forensic evaluators to determine the need for a sunrise review	Consult DOH	Complete	<ul style="list-style-type: none"> Expanded pool of forensic evaluators would help improve timeliness. Licensure would provide quality assurance and create professional standards for forensic evaluators. Develop long-term certification of forensic evaluators, consistent with the Trueblood Court Monitor’s recommendations on mid- and long-term performance to implement a forensic certification program to sustain performance (p. 33 of the Monitor’s Quarterly Report to the Court) 	<ul style="list-style-type: none"> Per consultation with DOH, a sunrise review pursuant to chapter 18.120 RCW may be necessary. According to DOH, the sunrise review process may potentially increase the time needed to establish a DOH certification process for forensic evaluators by up to 2.5 years. This proposed legislation is not currently a part of DSHS agency request package. BHSIA may seek legislative sponsorship for the upcoming 2016 Regular Legislative Session, and may request that a sunrise review not be conducted, given the emergency conditions in Trueblood.
	Obtain legislation	TBD		
Labor Coordination				
Engage Labor Leaders and Members	Conduct ongoing bi-monthly meetings with Labor leaders	Ongoing	<ul style="list-style-type: none"> Discuss policy, budget and operational changes likely required to comply with the Trueblood requirements 	<ul style="list-style-type: none"> Discussions will continue at all levels as decisions are made and steps taken to comply

Task	Key Milestones	Status / End Dates	Anticipated Outcome & Assumptions	Results Achieved & Barriers to Completion
	Notice to Labor Partners of intent to enter into direct contract negotiations for Competency Restoration Services	Complete	<ul style="list-style-type: none"> • Obtain staff necessary to safely support operation of additional forensic and civil beds at the state hospitals • Obtain necessary psychiatrists and physicians to supplement services proved by employees at Western State Hospital to safely support the operation of additional forensic and civil beds 	<p>with Trueblood</p> <ul style="list-style-type: none"> • Notice sent to affected state hospital employees in accordance with RCW 41.06.142 regarding decision to pursue direct contract negotiations to contract for restoration treatment services • Notice sent to Labor Partners and staff regarding institution of a recruitment incentive award pilot • Notice sent to affected Western State Hospital employees in accordance with RCW 41.06.142 regarding plan to pursue contracting for physicians and psychiatrists
	Notice to Labor Partners of recruitment incentive award pilot program	Complete		
	Notice to Labor Partners of intent to pursue an RFI for a Vendor to provide psychiatry and physician services at Western State Hospital and the potential to contract for such services	Complete		
	Alternatives to contracting submission deadline	11/25/2015		

Task	Key Milestones	Status / End Dates	Anticipated Outcome & Assumptions	Results Achieved & Barriers to Completion
	Deadline for notification of intent to form and Employee Business Unit	12/28/2015		
Data Collection and Fiscal Modeling				
Monthly report data collection	Identify and obtain needed data	Ongoing	<ul style="list-style-type: none"> Obtain data for monthly reports and develop standardized reports to inform policy development and implementation 	<ul style="list-style-type: none"> Data collection is ongoing
Institute data audit process	Review data and files of cases with anomalies	Ongoing	<ul style="list-style-type: none"> Ensure completeness and accuracy of wait list data 	<ul style="list-style-type: none"> Data validation process is ongoing
	Identify trends			
Hire Statistician/ Forecaster	Develop PDF	Complete	<ul style="list-style-type: none"> Provide expertise to develop models to predict need for competency services and develop an algorithm for admissions to State Hospitals to meet the 7 day standard and make optimal use of available beds 	<ul style="list-style-type: none"> The recruitment process has produced leads but no offer to date. Considering contract and other short-term possibilities to meet the need for this functionality
	Establish position	Complete		
	Recruit	On hold		
	Hire	TBD		
	Onboard	TBD		
Hire Data Architect Position	Develop PDF	Complete	<ul style="list-style-type: none"> Build a technology solution to establish a common platform to transmit data between the State Hospitals and over 240 different jurisdictions to improve timeliness Provide hands-on partner training across the system 	<ul style="list-style-type: none"> Arranged for Data Architect skills consulting from WaTech to fill that role.
	Establish position	Complete		
	Recruit	On hold		
	Hire	TBD		
	Onboard	TBD		
Hire Data Manager Position	Develop PDF	7/1/2014	<ul style="list-style-type: none"> Develop standardized data reports to inform fiscal and program operations and improve data integrity as recommended by JLARC and Groundswell 	<ul style="list-style-type: none"> Previously filled position is currently vacant as of 10/1/15. Recruitment is on hold for strategic review of the position.
	Establish position	9/1/2014		
	Recruit	TBD		
	Hire	TBD		

Task	Key Milestones	Status / End Dates	Anticipated Outcome & Assumptions	Results Achieved & Barriers to Completion
	Onboard	TBD		
Hire Web Developer	Develop PDF	Complete	<ul style="list-style-type: none"> Will work on interface for forensic data system. 	<ul style="list-style-type: none"> Position filled and on-boarded 11/16/15. A related business analyst position was also filled on 11/16/15 to support the forensic system project for electronic coordination of forensic services.
	Establish position	Complete		
	Recruit	Complete		
	Hire	Complete		
	Onboard	Complete		
Human Resources				
Hire Forensic Services Director	Conduct Interviews	TBD	<ul style="list-style-type: none"> Provide leadership and oversight for Forensic Mental Health Services operations 	<ul style="list-style-type: none"> Initial interviews completed and top three candidates identified. Town hall meetings were held with three candidates on 10/14/15 and 10/15/15. However, no candidate was selected. We are currently preparing to recommence the hiring process.
	Obtain staff and stakeholder feedback	TBD		
	Secretary interviews	TBD		
	Hire	TBD		
	Onboard	TBD		
Hire Office of Forensic Services HQ positions	Develop Position Descriptions	Complete	<ul style="list-style-type: none"> Provide infrastructure for forensic services system and improve effective and timely provision of competency services 	<ul style="list-style-type: none"> Project Manager started 10/26/2015 Compliance Reporting Specialist started 10/16/2015
	Establish positions	Complete		
	Post positions for recruitment	Complete		

Task	Key Milestones	Status / End Dates	Anticipated Outcome & Assumptions	Results Achieved & Barriers to Completion
	Conduct Interviews	In progress		<ul style="list-style-type: none"> • Diversion/Liaison specialist position started 9/1/15 • Establishing the Workforce Development positions had been placed on hold pending hire of the Forensic Services Director; due to setbacks in bringing on a Director, these positions are now being developed. • See Data Collection and Fiscal Modelling section
	Hire and Onboard	TBD		
Hire additional staff	Hired recruiter	Complete	<ul style="list-style-type: none"> • Obtain required staff of all classes to safely and appropriately operate additional civil and forensic beds and to meet data collection, analysis and reporting needs 	<ul style="list-style-type: none"> • Onboarded recruiter • Developed recruitment marketing materials • Engaged in hiring events • Provide \$200 incentive award to employees who refer a Psychiatrist, RN, Psychiatric Security Nurse or Psychiatric Nurse Attendants • Continuing barrier: Availability of interested and appropriately credentialed staff to fill vacant positions
	Establish recruiting marketing campaign	In progress		
	Conduct targeted hiring events	In progress		
	Pursue contracting	In progress		
	Weekly hiring status report	In progress		
	Institute employee hiring recruitment incentive pilot	Complete		
	Medical transcriptionist hired	Complete		
Competency Evaluation				
Hire additional evaluators	Hiring at WSH	In progress	<ul style="list-style-type: none"> • Increase evaluation capacity and reduce wait time for evaluation 	<ul style="list-style-type: none"> • As of 11/30/15, 8 of 8 new WSH positions are filled. One position had a start date in
	Hiring at ESH	In progress		

Task	Key Milestones	Status / End Dates	Anticipated Outcome & Assumptions	Results Achieved & Barriers to Completion
	Transfer one ESH vacant position to WSH	Complete		<p>November.</p> <ul style="list-style-type: none"> As of 11/30/15, 3 of the 5 new ESH positions have been filled. One had a start date in November. As of 11/30/15, one unfilled FTE position is in the process of being transferred from ESH to WSH where it can more easily be filled.
Build capacity for out-station sites	Identifying Out-station sites	In progress	<ul style="list-style-type: none"> Increased capacity at out-station sites will reduce wait time for evaluation 	<ul style="list-style-type: none"> Out-station site for Everett became operational 11/03/2015. Completed and currently in operation. Full time evaluator is stationed in SCORE facility in King County. Evaluations at SCORE have increased by 1.5 since an evaluator was stationed there. Clark County outstation is anticipated to be operational by January 31, 2016. Regularly scheduled visiting evaluator pilot scheduled for rotation in Kitsap, Yakima and Lewis counties
	Site agreement/contract processes	In progress		
	Out-station sites operational	Completed		

Task	Key Milestones	Status / End Dates	Anticipated Outcome & Assumptions	Results Achieved & Barriers to Completion
Coordinate with forensic mental health system partners	Created a template to organize cross partner county specific discussions and to document results	Complete	<ul style="list-style-type: none"> Conversations with select jails close to hospitals or already designated for outstation sites are focused on creating space for evaluations on a regularly scheduled basis and ability to transport to state hospital. Secondly to discuss with local defenders associations regarding predictable availability to attend with clients; courts for coordination of timely transmittal of orders and documents; and local mental health agencies for additional supports and perhaps space where that is identified as a challenge. Presentations at the WASPC conference will provide opportunity to inform about impacts of Trueblood decision and make connections with members for future planning to facilitate transfer and access to reduce wait times and provide competency services 	<ul style="list-style-type: none"> City of Yakima Municipal Court tentatively agreed to provide evaluators with a dedicated space for evaluations. DSHS meeting with the City of Yakima prompted productive conversations between prosecutor, defense bar, and jail on the use of underutilized diversion resources in the community. DSHS meet with Snohomish County officials and partners to discuss Everett evaluator outstation and diversion efforts. Snohomish County uses a triage form to divert individuals into community mental health treatment. Follow up meeting scheduled for 12/14/2015. Met with Lewis County officials and the Mental Health Alternative team to discuss diversion options. Next steps are to follow up with RSN administration and release of 5177 dollar RSN contract amendment. Anticipate completion – December 2015. DSHS attended the 10/16 Adult Behavioral Taskforce meeting centered around jail-based mental health services. Liaison was able to connect with chair of the Spokane Law and Justice Council (follow up 11/2015) and Snohomish County Jail Administrator (tour scheduled 10/19/2015) Access to/resources to build a shared
	Convene initial meetings	Ongoing		
	King County-hosted follow-up meeting	10/1/2015		
	Yakima County meeting with jail, defense attorneys, court and prosecutors	9/10/2015		
	Skagit County facility tour and in-person meeting	10/7/2015		
	Benton County facility tour and partnership meeting	9/28/2015		
	Partner meeting: City of Yakima	10/7/2015		
	Partner meeting: Snohomish	10/19/2015		
	Partner meeting: Pierce	9/30/2015		

Task	Key Milestones	Status / End Dates	Anticipated Outcome & Assumptions	Results Achieved & Barriers to Completion
	Partner meeting: Franklin Present at the Washington Association of Sheriffs and Police Chiefs (WASPC) annual conference	Ongoing 11/17/2015		calendaring system and Skagit county space limitations have been reported as barriers previously.

Task	Key Milestones	Status / End Dates	Anticipated Outcome & Assumptions	Results Achieved & Barriers to Completion
Continue current County-conducted evaluation system until 2018	Define data elements needed from counties that are conducting their own evaluations	11/30/2015	<ul style="list-style-type: none"> Obtain data needed from counties in order to meet court ordered reporting requirements 	<ul style="list-style-type: none"> DSHS has reached out to the Washington Association of Counties to see if their Annual Conference (November) is an appropriate audience and venue to hold a discussion with interested counties. E-mailed individual County Commissioners on October 19, 2015 regarding Community Competency Evaluations. Counties interested in program participation were asked to submit the name of individuals in their communities who should be involved in conversations related to the determination of data elements that should be collected each month. Submissions were due October 26, 2015. Three counties responded. DSHS is contacting each county directly to ensure declination of participation. DSHS presented at the 2015 Washington Association of Sheriffs and Police Chiefs Conference 11/17/15. Topic discussed was 5177 Implementation and multiple collaborative opportunities were identified.

Task	Key Milestones	Status / End Dates	Anticipated Outcome & Assumptions	Results Achieved & Barriers to Completion
Conduct Value Stream Map (VSM) of Competency Service Process	Action items to be incorporated into Tiger Team plans to implement recommendations	Ongoing	<ul style="list-style-type: none"> Develop current state map of the current system and suggestions that can be implemented to improve delivery of competency services 	<ul style="list-style-type: none"> Key resources have been hired and initial designs of replacement system to begin.
Conduct a Lean event at WSH to reform Administrative Assistant workflow	Planning for Lean event	Complete	<ul style="list-style-type: none"> Multiple reforms to workflow patterns, assignments and procedures will maximize ability to meet outpatient and inpatient evaluation timeliness; determine how to distribute administrative positions between facilities. 	<ul style="list-style-type: none"> The VSM was conducted between July and September 2015 and administrative support staff at WSH and ESH completed current state maps of the administrative steps needed to improve orders. Action plans were developed to include immediate improvements which were made by staff right away, interim improvements which can be accomplished with minor IT changes and a future state map that will inform the new data management system.
	Conduct Lean event	Complete		
	Schedule event to complete ideal future state map	TBD		
Explore triage system possibilities	Test a remote access system	11/30/2015	<ul style="list-style-type: none"> Provide out-stationed evaluators with the capacity to access DSHS systems and electronic health records remotely Support more rapid entry of evaluation information and reduce duplicate data entry 	<ul style="list-style-type: none"> We have concluded our initial testing of mobile solutions for the Forensic Evaluators. We are preparing for a pilot test with evaluators to test the mobile solution. Two outstations have been staffed and equipped. (Everett and SCORE). IT resources have been allocated to support these outstations.
	Pilot a remote access system to be used in the field	TBD		
	Determine if capacity exists to implement within current budget	Pending completion of testing		

Task	Key Milestones	Status / End Dates	Anticipated Outcome & Assumptions	Results Achieved & Barriers to Completion
Evaluate potential for distributing mobile equipment	Obtain additional information and recommendations from Groundswell	TBD	<p>Establish an efficient evaluation to identify individuals who:</p> <ul style="list-style-type: none"> • Need inpatient services due to serious mental health condition • Clearly do not require inpatient evaluation services; or • Are clearly competent due to changes in their condition since the issuance of an order for evaluation (such as no longer drug affected) 	<ul style="list-style-type: none"> • Discussions with local jurisdiction partnerships (as detailed above) have identified current local programs that may have tools in use that can be piloted as early screening tools.
Competency Restoration				
Western State Hospital (WSH); S4 Ward: add 15 beds	Design and Permitting	Complete	<ul style="list-style-type: none"> • Serves overall plan to add 90 beds and expand State Hospital bed capacity to meet Court ordered compliance date 	<ul style="list-style-type: none"> • Increased Competency Restoration bed capacity by 10 beds • Guard shack installation does not impede completion of fence sally port and electronic controls
	Construction	Complete		
	Labor Discussions	Complete		
	Staff Onboarding	Complete		
	Ward preparation and patient movement	Complete		
	Complete fence project	Complete		
	Complete Guard Shack	Complete		
Add 5 additional beds	TBD			
WSH; S4 Ward Phase II: add 15 beds	Labor Discussions	Complete	<ul style="list-style-type: none"> • Serves overall plan to add 90 beds and expand State Hospital bed capacity to meet Court ordered compliance date 	<ul style="list-style-type: none"> • Completion dates for the facilities work (including the fence) are dependent on Labor discussions
	Confirm needs with Fire Marshall	Complete		

Task	Key Milestones	Status / End Dates	Anticipated Outcome & Assumptions	Results Achieved & Barriers to Completion
	Complete fence project	Complete		<ul style="list-style-type: none"> • Lockdown for the Quadrangle will be December 7. • All physical/architectural modifications to WSH will be complete on 1/7/2016.
	Staff Onboarding	TBD		
	Ward Preparation and patient movement	TBD		
	Bed Occupancy	7/1/2016		
WSH; E2 and F3 Wards: add 30 beds	Design and Permitting	Complete	<ul style="list-style-type: none"> • Serves overall plan to add 90 beds and expand State Hospital bed capacity to meet Court ordered compliance date 	<ul style="list-style-type: none"> • Due to recent CMS survey results and DSHS plans to meet the requirements set out by CMS, the plans to open F3 have been postponed. • Physical renovations for F3 have been completed except for door replacements. • Difficulties in bringing on sufficient staffing have been a major hurdle. • All physical/architectural modifications to WSH will be complete on 1/7/2016.
	Patient movement: E2 to E4	Complete		
	Construction	11/17/2015		
	Labor Discussions	10/31/2015		
	Develop hiring plan	Complete		
	Ward Preparation and patient movement F3 to E2	Complete		
	Renovations to F3	12/18/2015		
	Bed Occupancy	TBD		
ESH	Review current ward occupancy and make relocation plan	Complete	<ul style="list-style-type: none"> • Serves overall plan to add 90 beds and expand State Hospital bed capacity to meet Court ordered compliance date 	<ul style="list-style-type: none"> • Negotiated with L&I and determined that no additional emergency circuits are required. • Received emergency declaration and secured contractor • Identified adequate number of patients to transfer from 3S to new 2N3 ward • Security and programmatic renovations
	Develop staffing and hiring plan	Complete		
	Install cabling needed for office relocation	Complete		

Task	Key Milestones	Status / End Dates	Anticipated Outcome & Assumptions	Results Achieved & Barriers to Completion
	Relocate staff offices on 2N3 to 1N3 and 3N3	Complete		underway on 3S2 ward Barriers include: <ul style="list-style-type: none"> • Ability to recruit enough staff to support additional 25 beds in Phase II
Design and Permitting	Complete	Negotiations with L & I	Complete	
Construction: Ward renovation	Complete	Construction: Patient safety--anti-ligature work)	Complete	
Construction: Update nurse call system/intercom	Complete	Construction: Install cameras	Complete	
CMS Survey for new 2N3 ward	TBD	Staff Ward Preparation and moving NGRI patients from 3S to 2N3	Complete	
Comp Restoration Bed Occupancy Phase I (5 beds)	12/18/2015			

Task	Key Milestones	Status / End Dates	Anticipated Outcome & Assumptions	Results Achieved & Barriers to Completion
	Comp Restoration Bed Occupancy Phase II (25 beds)	TBD		
Open Competency Restoration treatment program at Maple Lane	Assess The Joint Commission (TJC) and Centers for Medicare and Medicaid Services (CMS) certification requirements	Complete	<ul style="list-style-type: none"> Identify alternate facility capacity to meet Trueblood compliance deadline of 01/02/16 Any competency restoration treatment program at Maple Lane is anticipated to transfer to operation at a State Hospital before DOC would be housing inmates on that campus 	<ul style="list-style-type: none"> Continuing Special Use Permit process steps MOU has been signed by DOC and DSHS Identified prospective contractor to begin negotiating with in hopes of opening up a 30 bed restoration program at Maple Lane by April 1, 2015 DSHS staff hosted the Court Monitor, Dr. Danna Mauch, and Dr. Debra Pinals for a tour of Maple Lane on 11/10/15 Meeting with architect and construction team was held on 11/16/15 to determine remodeling needs at the facility BHSIA staff plan to meet with HRD to discuss staffing requirements and set a timeline to hire. BHSIA staff continue to review options with potential contractors to identify best fit for MLS.
	Test HVAC, lights, etc.	Complete		
	Complete Special Use Permit (SUP) Process	12/18/2015		
	Post Essential Public Facilities notice	Complete		
	Attend local school board meeting	Complete		
	Conduct a required public meeting	Complete		
	Participate in SUP Pre-Submission Conference	Complete		
	Establish DOC MOU	Complete		

Task	Key Milestones	Status / End Dates	Anticipated Outcome & Assumptions	Results Achieved & Barriers to Completion
	Hire DSHS staff to support a hybrid staffing model at MLS	3/31/2016		<ul style="list-style-type: none"> • Construction scope finalized, renovations set to begin in December • Once the contractor is identified, they will apply to DOH for licensure and DSHS for certification • BHSIA to meet with Green Hill School to identify collaboration opportunities in early Dec. • IT lead identified and engaged
	Identify contractor to implement restoration services at MLS	12/16/2015		
	Complete construction modifications required to open MLS	3/1/2016		
	Obtain Dept of Health Licensure and DSHS RTF certification	4/1/2016		
	Finalize service plans to cover laundry, food, transportation of goods, etc. for MLS; Draft Interagency Agreement to capture decisions	12/31/2015		

Task	Key Milestones	Status / End Dates	Anticipated Outcome & Assumptions	Results Achieved & Barriers to Completion
	IT services are available at MLS and electronic equipment configured and ready to use	3/1/2016		
Establish Community alternative sites for competency restoration in Yakima	Statutory direction	Complete	<ul style="list-style-type: none"> • Planning for 24 beds • Anticipated duration of one year and possible one year extension • Identify alternate facility capacity to support timely competency services that will meet the Trueblood compliance deadline of 01/02/16 • It is anticipated that trauma informed care (a national best practice for psychiatric hospitals) and the Breaking Barriers program used at WSH for competency restoration will be the same model used in this RTF • WSH Center for Forensic Services supervising psychiatrist is willing to help provide training and consultation to Comprehensive prescribers and WSH pharmacy was consulted regarding medication formularies to be used • Additional collaborations will be instituted to support ongoing comparable treatment services to patients served in this RTF and to 	<ul style="list-style-type: none"> • Fully executed contract signed on 10/22/15, to start 10/23/15. • Emergency rules to certify agencies to provide competency restoration services were filed with the Washington State Code Reviser's office on 10/07/15 and became effective on that date. • DSHS is moving forward with preparations to file a permanent rule filing on these rules (CR-102) after receiving stakeholder input. <p>Implementation date was extended to 3/1/16 to accommodate the following schedule:</p> <ul style="list-style-type: none"> • Initial consultation with DOH construction review - 9/28/2015 • Initiate process for RTF licensing with DOH - 10/1/2015 • Sign contract with DSHS to provide CR services; Full push for recruiting - 10/23/2015 • Sign Facility Contract with Yakima County Corrections - 11/04/2015 • Complete Program manual for review' • Complete policies and procedures for review -
	Meet 41.06.142 obligations	Complete		
	Post RFI	Complete		
	Host information day	Complete		
	RFI responses due	Complete		
	Vendor presentations	Complete		
	Post RFP	Not pursued		
	Tour Yakima facility	Complete		
	Establish emergency rule to support authority to operate	Complete		
	Negotiate contract	Complete		
	Develop referral criteria	Complete		
	Execute contract	Complete		
Desired service begin	3/1/2016			

Task	Key Milestones	Status / End Dates	Anticipated Outcome & Assumptions	Results Achieved & Barriers to Completion
			ensure ongoing quality and oversight within the contract monitoring to be done by DSHS	11/15/15 <ul style="list-style-type: none"> Finalize renovation plans and submit for approval - 12/07/2015 Sign contractor agreement to complete renovations - 12/11/2015 Complete functional plan for review; Submit application for RTF Licensure; Submit application for certification with DBHR - 12/15/15 Renovations completed and facility ready for use; Open doors to new admissions - 3/1/16 Staff training with Western State (40 hours) - February 2016 Two week mock opening staff training - February 2016
County transport of patients	Coordinate with counties to develop transport protocols	TBD	<ul style="list-style-type: none"> Ensure timely transport of patients to support delivery of competency services as directed in court order 	<ul style="list-style-type: none"> See updates in Evaluation partner discussion section(s) above
Diversion Alternatives				
Implement new SB 5177 provisions for dismissal of charges & referral to treatment	Issuance of RFA for distribution of appropriated funding	TBD	<ul style="list-style-type: none"> Prosecutor can dismiss criminal charges without prejudice & refer to community-based mental health services 	<ul style="list-style-type: none"> DSHS is preparing a draft amendment to present to the RSNs at the next RSN administrator meeting on December 3, 2015. Additional funding required if diverted cases increases to 25-50%
	Diversion Programs operational	TBD		
Establish a Diversion Taskforce	Establish task force membership	12/1/2015	<ul style="list-style-type: none"> Establish a taskforce modeled after Michigan's Mental Health Diversion Council, and membership from key state partners is currently being developed to include a charter and scope. It is anticipated that the scope will 	<ul style="list-style-type: none"> Governor's Office has identified staff from HCA, DOC, and DSHS to participate in initial internal workgroup Decision Package has been submitted to
	Develop taskforce charter and scope	12/31/2015		
	Convene taskforce	1/1/2016		

Task	Key Milestones	Status / End Dates	Anticipated Outcome & Assumptions	Results Achieved & Barriers to Completion
			be broader than outlined in SB5177 which includes only post-booking diversion.	fund efforts <ul style="list-style-type: none"> • Anticipated timeframe for a signed executive order and appointment of partners – January 2016
Staff and Patient Safety				
State Hospital Psychiatric Intensive Care Unit (PICU)	Construction	4/1/2016	<ul style="list-style-type: none"> • Recommendation of Labor/Management Ad Hoc Safety Committee to enhance staff and patient safety 	<ul style="list-style-type: none"> • Supplemental budget allocated \$339k for development of a PICU—construction will take place to establish an 8 bed space • Proposed budget has funding for 23 FTE to implement a 1-3 bed PICU • Bed occupancy in excess of 3 patients dependent on additional funding
	Staff Ward Preparation	4/15/2016		
	1-3 Bed Occupancy	4/19/2016		
	Occupancy beyond 3 beds	TBD		
Psychiatric Emergency Response Teams (PERT) teams (1 additional WSH and 1 at ESH)	Labor discussions	Complete	<ul style="list-style-type: none"> • Recommendation of Labor/Management Ad Hoc Safety Committee 	<ul style="list-style-type: none"> • Likely need PERT team at ESH forensic wards for higher acuity patients who have been in jail for less time • Has been implemented at ESH and is pending implementation on the civil side at WSH.
	Staff training	Complete		
	Equipment purchase	Complete		
	Staff onboarding	Complete ESH; pending civil at WSH		
	PERT teams operational	Complete ESH; pending civil at WSH		

Task	Key Milestones	Status / End Dates	Anticipated Outcome & Assumptions	Results Achieved & Barriers to Completion
Staff safety training in de-escalation and other skills to reduce workplace violence designed and delivered by State Hospital staff experts	Approval of proposed budget	Complete	<ul style="list-style-type: none"> Recommendation of Labor/Management Ad Hoc Safety Committee to enhance patient and staff safety 	Budget provided 9 of the requested fill behind FTEs to include: <ul style="list-style-type: none"> PSA/MHT Training—16 hours LPN Training—18 hours RN Training—24 hours
	Develop curriculum	Complete		
	Broaden training of Best Practices for Interaction with Patients	Ongoing		
	Develop system to monitor annual training implementation	Ongoing		
Conduct comprehensive assault incident reviews	Hire 2 patient-to-staff assault incident reviewers	Complete	<ul style="list-style-type: none"> Post-incident de-briefing and root cause analysis of assault incidents will identify necessary systems changes to increase staff safety 	<ul style="list-style-type: none"> Assault incident reviewer FTEs were not in BHSIA's budget but we absorbed the cost and went forward.
	Establish assault review workgroup	Complete		

Appendix A: Class Member-- Evaluation Information for October 2015

Hospital	Class Member	Location	County	Offense	Completion Method or Incomplete	Order Signed Date	Number of days from signed order to:			
							Order Received	Discovery Received	Complete	Incomplete: End of Reporting Period
WSH	2046	JAIL	KING	FELONY	FAXED	8/7/2015	21	21	56	.
WSH	2084	JAIL	KING	FELONY	FAXED	8/13/2015	0	0	62	.
WSH	2184	JAIL	CLARK	FELONY	WITHDRAWN	8/27/2015	0	0	40	.
WSH	2320	JAIL	KING	FELONY	FAXED	8/4/2015	35	35	62	.
WSH	2337	JAIL	COWLITZ	FELONY	FAXED	9/1/2015	0	0	30	.
WSH	2338	JAIL	THURSTON	MISDEMEANOR	FAXED	9/1/2015	0	2	30	.
WSH	2348	JAIL	KING	MISDEMEANOR	WITHDRAWN	9/2/2015	7	7	64	.
WSH	2360	JAIL	KING	FELONY	FAXED	9/3/2015	0	0	41	.
WSH	2368	JAIL	KING	FELONY	FAXED	9/4/2015	4	4	28	.
WSH	2370	JAIL	THURSTON	FELONY	FAXED	9/4/2015	4	4	27	.
WSH	2381	JAIL	KING	FELONY	FAXED	9/8/2015	0	0	44	.
WSH	2391	JAIL	KING	MISDEMEANOR	FAXED	9/9/2015	2	2	27	.
WSH	2392	JAIL	KING	MISDEMEANOR	EVAL CLOSED	9/9/2015	0	0	33	.
WSH	2406	JAIL	KING	FELONY	EVAL CLOSED	9/10/2015	1	1	35	.
WSH	2407	JAIL	KING	FELONY	FAXED	9/10/2015	0	0	28	.
WSH	2427	INPATIENT	PIERCE	FELONY CLASS A	BED OFFERED	9/14/2015	1	1	28	0
WSH	2430	JAIL	KITSAP	MISDEMEANOR	FAXED	9/14/2015	0	0	24	.
WSH	2431	JAIL	LEWIS	FELONY	FAXED	9/14/2015	7	7	17	.
WSH	2436	JAIL	KING	FELONY	FAXED	9/15/2015	0	0	20	.
WSH	2437	JAIL	KING	MISDEMEANOR	FAXED	9/15/2015	2	2	27	.
WSH	2442	INPATIENT	KING	MISDEMEANOR	BED OFFERED	9/16/2015	8	8	23	.
WSH	2443	JAIL	CLARK	MISDEMEANOR	FAXED	9/16/2015	1	1	17	.
WSH	2444	JAIL	CLARK	MISDEMEANOR	FAXED	9/16/2015	0	0	17	.

WSH	2445	JAIL	CLARK	MISDEMEANOR	FAXED	9/16/2015	1	1	21	.	
WSH	2446	JAIL	KING	FELONY	FAXED	9/16/2015	0	0	21	.	
WSH	2448	JAIL	SKAGIT	MISDEMEANOR	FAXED	9/16/2015	1	1	23	.	
WSH	2456	JAIL	CLARK	FELONY	FAXED	9/17/2015	0	0	18	.	
WSH	2457	JAIL	CLARK	MISDEMEANOR	FAXED	9/17/2015	1	4	21	.	
WSH	2458	JAIL	KING	FELONY	FAXED	9/17/2015	0	0	26	.	
WSH	2459	JAIL	KING	FELONY	FAXED	9/17/2015	0	0	20	.	
WSH	2463	JAIL	KING	MISDEMEANOR	FAXED	9/17/2015	0	0	18	.	
WSH	2464	JAIL	SKAGIT	FELONY	INCOMPLETE	9/17/2015	0	0	.		44
WSH	2465	JAIL	SNOHOMISH	MISDEMEANOR	INCOMPLETE	9/17/2015	0	0	.		44
WSH	2468	JAIL	CLARK	FELONY	FAXED	9/18/2015	3	3	15	.	
WSH	2469	JAIL	CLARK	FELONY	FAXED	9/18/2015	0	0	19	.	
WSH	2470	JAIL	KING	MISDEMEANOR	INCOMPLETE	9/18/2015	0	0	.		43
WSH	2471	JAIL	KING	MISDEMEANOR	FAXED	9/18/2015	0	0	14	.	
WSH	2472	JAIL	KING	MISDEMEANOR	WITHDRAWN	9/18/2015	0	0	13	.	
WSH	2474	JAIL	PIERCE	MISDEMEANOR	FAXED	9/18/2015	5	5	18	.	
WSH	2476	JAIL	GRAYS HARBOR	FELONY	FAXED	9/21/2015	0	0	11	.	
WSH	2477	JAIL	KING	FELONY	FAXED	9/21/2015	0	0	16	.	
WSH	2478	JAIL	KING	MISDEMEANOR	FAXED	9/21/2015	0	0	22	.	
WSH	2479	JAIL	KING	MISDEMEANOR	FAXED	9/21/2015	0	0	14	.	
WSH	2483	INPATIENT	PIERCE	MISDEMEANOR	BED OFFERED	9/22/2015	1	1	17	.	
WSH	2484	JAIL	KING	FELONY	FAXED	9/22/2015	1	1	16	.	
WSH	2485	JAIL	CLARK	MISDEMEANOR	FAXED	9/22/2015	1	1	14	.	
WSH	2486	JAIL	KING	FELONY	FAXED	9/22/2015	1	1	34	.	
WSH	2487	JAIL	KING	MISDEMEANOR	FAXED	9/22/2015	1	1	15	.	
WSH	2488	JAIL	KING	MISDEMEANOR	FAXED	9/22/2015	1	1	14	.	
WSH	2489	JAIL	THURSTON	FELONY	FAXED	9/22/2015	0	0	9	.	
WSH	2490	JAIL	THURSTON	MISDEMEANOR	FAXED	9/22/2015	1	1	16	.	
WSH	2491	JAIL	THURSTON	MISDEMEANOR	FAXED	9/22/2015	1	2	15	.	

WSH	2493	JAIL	CLARK	FELONY	FAXED	9/23/2015	1	1	12	.
WSH	2494	JAIL	COWLITZ	FELONY	FAXED	9/23/2015	0	0	44	.
WSH	2495	JAIL	COWLITZ	MISDEMEANOR	FAXED	9/23/2015	0	0	8	.
WSH	2496	JAIL	KING	FELONY	FAXED	9/23/2015	0	0	27	.
WSH	2497	JAIL	KING	MISDEMEANOR	CRIC	9/23/2015	0	0	20	.
WSH	2498	JAIL	KING	MISDEMEANOR	FAXED	9/23/2015	0	0	13	.
WSH	2499	JAIL	KING	MISDEMEANOR	WITHDRAWN	9/23/2015	0	0	37	.
WSH	2502	JAIL	KING	MISDEMEANOR	FAXED	9/23/2015	0	0	13	.
WSH	2504	JAIL	LEWIS	MISDEMEANOR	FAXED	9/23/2015	1	1	8	.
WSH	2505	JAIL	PIERCE	MISDEMEANOR	FAXED	9/23/2015	0	0	12	.
WSH	2506	JAIL	THURSTON	FELONY	FAXED	9/23/2015	0	0	16	.
WSH	2507	JAIL	GRAYS HARBOR	MISDEMEANOR	FAXED	9/24/2015	0	0	13	.
WSH	2508	JAIL	KING	MISDEMEANOR	TIC	9/24/2015	0	0	15	.
WSH	2509	JAIL	SKAGIT	FELONY	FAXED	9/24/2015	0	0	21	.
WSH	2510	JAIL	THURSTON	FELONY	INCOMPLETE	9/24/2015	0	0	.	37
WSH	2511	JAIL	WHATCOM	FELONY	FAXED	9/24/2015	0	0	21	.
WSH	2512	JAIL	WHATCOM	MISDEMEANOR	FAXED	9/24/2015	0	0	20	.
WSH	2513	JAIL	KING	MISDEMEANOR	FAXED	9/25/2015	3	3	20	.
WSH	2514	JAIL	KING	MISDEMEANOR	FAXED	9/25/2015	0	0	18	.
WSH	2515	JAIL	KING	MISDEMEANOR	FAXED	9/25/2015	0	0	10	.
WSH	2516	JAIL	KING	MISDEMEANOR	FAXED	9/25/2015	3	3	14	.
WSH	2517	JAIL	PIERCE	MISDEMEANOR	FAXED	9/25/2015	0	0	11	.
WSH	2518	JAIL	KING	FELONY	FAXED	9/28/2015	0	0	16	.
WSH	2519	JAIL	KING	FELONY	FAXED	9/28/2015	0	0	25	.
WSH	2520	JAIL	KING	FELONY	FAXED	9/28/2015	0	0	18	.
WSH	2521	JAIL	KING	FELONY	FAXED	9/28/2015	0	0	18	.
WSH	2522	JAIL	KITSAP	MISDEMEANOR	FAXED	9/28/2015	0	0	7	.
WSH	2523	JAIL	KITSAP	MISDEMEANOR	FAXED	9/28/2015	0	0	7	.
WSH	2524	JAIL	KITSAP	MISDEMEANOR	FAXED	9/28/2015	2	2	7	.

WSH	2525	JAIL	PIERCE	MISDEMEANOR	WITHDRAWN	9/28/2015	0	0	8	.	
WSH	2526	JAIL	CLARK	MISDEMEANOR	FAXED	9/29/2015	0	0	15	.	
WSH	2527	JAIL	KITSAP	MISDEMEANOR	INCOMPLETE	9/29/2015	1	1	.		32
WSH	2529	JAIL	SNOHOMISH	MISDEMEANOR	INCOMPLETE	9/30/2015	0	0	.		31
WSH	2667	JAIL	KING	FELONY	FAXED	8/11/2015	55	64	59	.	
WSH	2668	INPATIENT	PIERCE	FELONY CLASS B	BED OFFERED	9/2/2015	0	0	30	.	
WSH	2669	INPATIENT	KING	FELONY CLASS B	BED OFFERED	9/8/2015	1	1	36	.	
WSH	2670	JAIL	JEFFERSON	FELONY	FAXED	9/10/2015	1	1	28	.	
WSH	2671	INPATIENT	CLARK	FELONY CLASS A	BED OFFERED	9/11/2015	3	3	28	.	
WSH	2672	INPATIENT	KING	FELONY CLASS A	BED OFFERED	9/14/2015	1	1	28	.	
WSH	2673	JAIL	KING	MISDEMEANOR	FAXED	9/21/2015	0	0	17	.	
WSH	2674	INPATIENT	KING	FELONY CLASS A	BED OFFERED	9/23/2015	1	1	27	.	
WSH	2675	JAIL	KING	MISDEMEANOR	TIC	9/23/2015	0	0	9	.	
WSH	2676	INPATIENT	KING	FELONY CLASS B	BED OFFERED	9/24/2015	0	0	20	.	
WSH	2677	JAIL	GRAYS HARBOR	FELONY	FAXED	9/28/2015	2	2	11	.	
WSH	2678	JAIL	KING	FELONY	FAXED	9/28/2015	0	0	21	.	
WSH	2679	JAIL	KING	FELONY	FAXED	9/28/2015	0	0	24	.	
WSH	2680	JAIL	KING	MISDEMEANOR	WITHDRAWN	9/28/2015	0	0	7	.	
WSH	2681	JAIL	KITSAP	FELONY	FAXED	9/28/2015	0	0	7	.	
WSH	2682	JAIL	KITSAP	MISDEMEANOR	FAXED	9/28/2015	0	0	7	.	
WSH	2683	JAIL	PIERCE	MISDEMEANOR	WITHDRAWN	9/28/2015	2	2	9	.	
WSH	2684	JAIL	KING	FELONY	FAXED	9/29/2015	3	3	27	.	
WSH	2685	JAIL	PIERCE	MISDEMEANOR	WITHDRAWN	9/29/2015	3	3	8	.	
WSH	2686	JAIL	KING	FELONY	INCOMPLETE	9/30/2015	1	1	.		31
WSH	2687	JAIL	KING	FELONY	INCOMPLETE	9/30/2015	1	1	.		31
WSH	2688	JAIL	KING	MISDEMEANOR	TIC	9/30/2015	2	2	20	.	
WSH	2689	JAIL	KING	MISDEMEANOR	FAXED	9/30/2015	1	1	25	.	
WSH	2690	JAIL	PIERCE	MISDEMEANOR	FAXED	9/30/2015	0	0	15	.	
WSH	2691	JAIL	SNOHOMISH	FELONY	FAXED	9/30/2015	1	1	14	.	

WSH	2692	JAIL	SNOHOMISH	FELONY	FAXED	9/30/2015	2	2	28	.	
WSH	2693	JAIL	SNOHOMISH	MISDEMEANOR	FAXED	9/30/2015	2	2	21	.	
WSH	2694	JAIL	THURSTON	FELONY	FAXED	9/30/2015	1	1	5	.	
WSH	2695	JAIL	WHATCOM	MISDEMEANOR	FAXED	9/30/2015	0	0	24	.	
WSH	2696	INPATIENT	COWLITZ	FELONY CLASS A	BED OFFERED	10/1/2015	0	0	15	.	
WSH	2697	INPATIENT	PIERCE	FELONY CLASS B	BED OFFERED	10/1/2015	1	1	22	.	
WSH	2698	JAIL	KING	FELONY	INCOMPLETE	10/1/2015	0	0	.		30
WSH	2699	JAIL	KING	FELONY	FAXED	10/1/2015	1	1	15	.	
WSH	2700	JAIL	KING	FELONY	FAXED	10/1/2015	1	1	20	.	
WSH	2701	JAIL	KING	MISDEMEANOR	FAXED	10/1/2015	0	0	29	.	
WSH	2702	JAIL	KING	MISDEMEANOR	WITHDRAWN	10/1/2015	1	1	7	.	
WSH	2703	JAIL	KING	MISDEMEANOR	FAXED	10/1/2015	5	5	20	.	
WSH	2704	JAIL	KING	MISDEMEANOR	WITHDRAWN	10/2/2015	0	0	10	.	
WSH	2705	JAIL	KING	MISDEMEANOR	FAXED	10/2/2015	0	0	12	.	
WSH	2706	JAIL	KING	MISDEMEANOR	WITHDRAWN	10/2/2015	3	3	13	.	
WSH	2707	JAIL	SNOHOMISH	MISDEMEANOR	FAXED	10/2/2015	3	3	19	.	
WSH	2708	JAIL	SNOHOMISH	MISDEMEANOR	FAXED	10/2/2015	3	3	19	.	
WSH	2709	JAIL	SNOHOMISH	MISDEMEANOR	FAXED	10/2/2015	19	19	20	.	
WSH	2710	JAIL	THURSTON	MISDEMEANOR	FAXED	10/2/2015	7	7	18	.	
WSH	2711	INPATIENT	KING	FELONY CLASS C	BED OFFERED	10/5/2015	0	0	18	.	
WSH	2712	INPATIENT	KING	MISDEMEANOR	BED OFFERED	10/5/2015	0	0	23	.	
WSH	2713	JAIL	CLARK	FELONY	FAXED	10/5/2015	0	0	35	.	
WSH	2714	JAIL	KING	FELONY	TIC	10/5/2015	0	0	28	.	
WSH	2715	JAIL	KING	MISDEMEANOR	FAXED	10/5/2015	0	0	11	.	
WSH	2716	JAIL	KING	MISDEMEANOR	FAXED	10/5/2015	10	10	17	.	
WSH	2717	JAIL	MASON	FELONY	FAXED	10/5/2015	0	0	7	.	
WSH	2718	JAIL	PIERCE	FELONY	FAXED	10/5/2015	1	1	10	.	
WSH	2719	JAIL	PIERCE	MISDEMEANOR	INCOMPLETE	10/5/2015	0	0	.		26
WSH	2720	JAIL	CLALLAM	MISDEMEANOR	FAXED	10/6/2015	0	1	7	.	
WSH	2721	JAIL	CLARK	MISDEMEANOR	FAXED	10/6/2015	0	0	7	.	

WSH	2722	JAIL	KING	MISDEMEANOR	FAXED	10/6/2015	1	1	21	.
WSH	2723	JAIL	KING	MISDEMEANOR	FAXED	10/6/2015	0	0	22	.
WSH	2724	JAIL	LEWIS	MISDEMEANOR	FAXED	10/6/2015	0	0	7	.
WSH	2725	JAIL	PIERCE	FELONY	FAXED	10/6/2015	1	1	13	.
WSH	2726	JAIL	SNOHOMISH	MISDEMEANOR	WITHDRAWN	10/6/2015	1	1	17	.
WSH	2727	JAIL	CLARK	MISDEMEANOR	FAXED	10/7/2015	2	2	2	.
WSH	2728	JAIL	KING	FELONY	FAXED	10/7/2015	1	1	29	.
WSH	2729	JAIL	KING	FELONY	FAXED	10/7/2015	0	0	8	.
WSH	2730	JAIL	KING	FELONY	FAXED	10/7/2015	0	0	22	.
WSH	2731	JAIL	KING	MISDEMEANOR	FAXED	10/7/2015	1	1	5	.
WSH	2732	JAIL	KING	MISDEMEANOR	FAXED	10/7/2015	1	1	5	.
WSH	2733	JAIL	KING	MISDEMEANOR	FAXED	10/7/2015	0	0	7	.
WSH	2734	JAIL	KING	MISDEMEANOR	FAXED	10/7/2015	1	1	14	.
WSH	2735	JAIL	KING	MISDEMEANOR	FAXED	10/7/2015	8	8	14	.
WSH	2736	JAIL	PIERCE	FELONY	INCOMPLETE	10/7/2015	6	6	.	24
WSH	2737	JAIL	PIERCE	FELONY	FAXED	10/7/2015	1	1	24	.
WSH	2738	JAIL	SNOHOMISH	MISDEMEANOR	WITHDRAWN	10/7/2015	12	12	29	.
WSH	2739	JAIL	SNOHOMISH	MISDEMEANOR	FAXED	10/7/2015	0	0	7	.
WSH	2740	JAIL	SNOHOMISH	MISDEMEANOR	FAXED	10/7/2015	0	0	16	.
WSH	2741	JAIL	SNOHOMISH	MISDEMEANOR	FAXED	10/7/2015	0	0	16	.
WSH	2743	INPATIENT	KING	FELONY CLASS B	BED OFFERED	10/8/2015	0	0	20	.
WSH	2744	JAIL	CLARK	MISDEMEANOR	FAXED	10/8/2015	4	4	11	.
WSH	2745	JAIL	KING	FELONY	FAXED	10/8/2015	0	0	36	.
WSH	2746	JAIL	KING	FELONY	WITHDRAWN	10/8/2015	0	0	7	.
WSH	2747	JAIL	KING	FELONY	FAXED	10/8/2015	0	0	21	.
WSH	2748	JAIL	KING	MISDEMEANOR	FAXED	10/8/2015	0	0	22	.
WSH	2749	JAIL	KING	MISDEMEANOR	FAXED	10/8/2015	1	1	12	.
WSH	2750	JAIL	KING	MISDEMEANOR	FAXED	10/8/2015	0	0	14	.
WSH	2751	JAIL	PIERCE	FELONY	FAXED	10/8/2015	1	1	6	.
WSH	2752	JAIL	PIERCE	FELONY	FAXED	10/8/2015	1	4	7	.

WSH	2753	JAIL	PIERCE	MISDEMEANOR	FAXED	10/8/2015	1	1	6	.	
WSH	2754	JAIL	PIERCE	MISDEMEANOR	FAXED	10/8/2015	0	1	6	.	
WSH	2755	JAIL	PIERCE	MISDEMEANOR	FAXED	10/8/2015	1	5	8	.	
WSH	2756	JAIL	SKAGIT	FELONY	FAXED	10/8/2015	0	0	18	.	
WSH	2757	JAIL	THURSTON	MISDEMEANOR	FAXED	10/8/2015	1	1	11	.	
WSH	2758	JAIL	WHATCOM	MISDEMEANOR	FAXED	10/8/2015	6	6	27	.	
WSH	2759	JAIL	CLARK	MISDEMEANOR	FAXED	10/9/2015	3	3	10	.	
WSH	2760	JAIL	KING	FELONY	INCOMPLETE	10/9/2015	4	4	.		22
WSH	2761	JAIL	THURSTON	MISDEMEANOR	FAXED	10/9/2015	0	0	4	.	
WSH	2762	JAIL	THURSTON	MISDEMEANOR	FAXED	10/9/2015	0	0	18	.	
WSH	2763	JAIL	KING	MISDEMEANOR	FAXED	10/10/2015	6	12	27	.	
WSH	2764	INPATIENT	KING	FELONY CLASS B	BED OFFERED	10/12/2015	0	0	21	.	
WSH	2765	JAIL	GRAYS HARBOR	FELONY	FAXED	10/12/2015	1	1	9	.	
WSH	2766	JAIL	KING	MISDEMEANOR	FAXED	10/12/2015	0	0	21	.	
WSH	2767	JAIL	KING	FELONY	INCOMPLETE	10/12/2015	1	1	.		19
WSH	2768	JAIL	KING	FELONY	WITHDRAWN	10/12/2015	1	1	24	.	
WSH	2769	JAIL	KING	FELONY	INCOMPLETE	10/12/2015	1	1	.		19
WSH	2770	JAIL	KING	FELONY	FAXED	10/12/2015	0	0	9	.	
WSH	2771	JAIL	KING	MISDEMEANOR	FAXED	10/12/2015	0	0	18	.	
WSH	2772	JAIL	KING	MISDEMEANOR	INCOMPLETE	10/12/2015	0	1	.		19
WSH	2773	JAIL	KING	MISDEMEANOR	FAXED	10/12/2015	1	1	18	.	
WSH	2774	JAIL	KING	MISDEMEANOR	FAXED	10/12/2015	2	2	4	.	
WSH	2775	JAIL	KING	MISDEMEANOR	WITHDRAWN	10/12/2015	0	0	8	.	
WSH	2776	JAIL	KING	MISDEMEANOR	FAXED	10/12/2015	0	0	14	.	
WSH	2777	JAIL	KING	MISDEMEANOR	FAXED	10/12/2015	1	1	15	.	
WSH	2778	JAIL	KING	MISDEMEANOR	FAXED	10/12/2015	1	1	17	.	
WSH	2779	JAIL	KITSAP	MISDEMEANOR	FAXED	10/12/2015	0	0	3	.	
WSH	2780	JAIL	MASON	FELONY	INCOMPLETE	10/12/2015	1	1	.		19

WSH	2781	JAIL	THURSTON	GROSS MISDEMEANOR	FAXED	10/12/2015	0	0	8	.	
WSH	2782	JAIL	THURSTON	MISDEMEANOR	INCOMPLETE	10/12/2015	0	0		.	19
WSH	2783	INPATIENT	KING	MISDEMEANOR	BED OFFERED	10/13/2015	1	1	20	.	
WSH	2784	INPATIENT	KING	MISDEMEANOR	BED OFFERED	10/13/2015	1	1	22	.	
WSH	2785	JAIL	CLARK	FELONY	FAXED	10/13/2015	0	0	10	.	
WSH	2786	JAIL	KING	MISDEMEANOR	FAXED	10/13/2015	0	0	24	.	
WSH	2787	JAIL	KING	MISDEMEANOR	FAXED	10/13/2015	0	0	21	.	
WSH	2788	JAIL	KING	MISDEMEANOR	FAXED	10/13/2015	0	0	24	.	
WSH	2789	JAIL	KING	MISDEMEANOR	FAXED	10/13/2015	0	0	24	.	
WSH	2790	JAIL	KING	MISDEMEANOR	TIC	10/13/2015	0	0	20	.	
WSH	2791	JAIL	PIERCE	FELONY	FAXED	10/13/2015	3	3	8	.	
WSH	2792	JAIL	PIERCE	FELONY	FAXED	10/13/2015	13	13	16	.	
WSH	2793	JAIL	PIERCE	MISDEMEANOR	FAXED	10/13/2015	1	1	6	.	
WSH	2795	INPATIENT	THURSTON	FELONY CLASS C	BED OFFERED	10/14/2015	6	6	29	.	
WSH	2796	JAIL	KING	MISDEMEANOR	FAXED	10/14/2015	0	0	13	.	
WSH	2797	JAIL	KING	MISDEMEANOR	FAXED	10/14/2015	0	0	16	.	
WSH	2798	JAIL	KING	MISDEMEANOR	FAXED	10/14/2015	0	0	16	.	
WSH	2799	JAIL	KING	MISDEMEANOR	INCOMPLETE	10/14/2015	0	0		.	17
WSH	2800	JAIL	KING	MISDEMEANOR	FAXED	10/14/2015	0	0	19	.	
WSH	2801	JAIL	KING	MISDEMEANOR	FAXED	10/14/2015	7	7	23	.	
WSH	2802	JAIL	PIERCE	FELONY	FAXED	10/14/2015	1	1	13	.	
WSH	2803	JAIL	PIERCE	MISDEMEANOR	FAXED	10/14/2015	0	0	8	.	
WSH	2804	JAIL	PIERCE	MISDEMEANOR	FAXED	10/14/2015	0	0	9	.	
WSH	2805	JAIL	THURSTON	FELONY	FAXED	10/14/2015	0	0	8	.	
WSH	2806	JAIL	THURSTON	FELONY	FAXED	10/14/2015	0	0	8	.	
WSH	2807	JAIL	KING	FELONY	TIC	10/15/2015	0	0	22	.	
WSH	2809	JAIL	KING	MISDEMEANOR	FAXED	10/15/2015	0	0	7	.	
WSH	2810	JAIL	LEWIS	FELONY	FAXED	10/15/2015	4	4	7	.	
WSH	2811	JAIL	PIERCE	MISDEMEANOR	WITHDRAWN	10/15/2015	0	0	4	.	

WSH	2812	JAIL	PIERCE	MISDEMEANOR	FAXED	10/15/2015	0	0	7	.	
WSH	2813	JAIL	SNOHOMISH	FELONY	FAXED	10/15/2015	0	0	14	.	
WSH	2814	JAIL	SNOHOMISH	MISDEMEANOR	WITHDRAWN	10/15/2015	0	0	12	.	
WSH	2815	JAIL	CLALLAM	FELONY	FAXED	10/16/2015	0	0	19	.	
WSH	2816	JAIL	CLALLAM	FELONY	WITHDRAWN	10/16/2015	7	0	14	.	
WSH	2817	JAIL	KING	MISDEMEANOR	INCOMPLETE	10/16/2015	3	3	.		15
WSH	2819	JAIL	KING	MISDEMEANOR	FAXED	10/16/2015	5	5	13	.	
WSH	2820	JAIL	KITSAP	MISDEMEANOR	FAXED	10/16/2015	3	3	6	.	
WSH	2821	JAIL	PIERCE	FELONY	INCOMPLETE	10/16/2015	10	10	.		15
WSH	2822	JAIL	PIERCE	MISDEMEANOR	FAXED	10/16/2015	3	7	12	.	
WSH	2823	JAIL	THURSTON	MISDEMEANOR	FAXED	10/16/2015	0	0	14	.	
WSH	2824	INPATIENT	PIERCE	FELONY CLASS B	BED OFFERED	10/19/2015	0	0	24	.	
WSH	2825	JAIL	KING	FELONY	TIC	10/19/2015	0	0	24	.	
WSH	2826	JAIL	KING	MISDEMEANOR	INCOMPLETE	10/19/2015	0	0	.		12
WSH	2827	JAIL	KING	MISDEMEANOR	WITHDRAWN	10/19/2015	0	0	16	.	
WSH	2828	JAIL	KING	MISDEMEANOR	WITHDRAWN	10/19/2015	0	0	9	.	
WSH	2829	JAIL	LEWIS	FELONY	FAXED	10/19/2015	0	0	3	.	
WSH	2830	JAIL	MASON	FELONY	FAXED	10/19/2015	11	11	22	.	
WSH	2831	JAIL	CLARK	FELONY	FAXED	10/20/2015	0	2	9	.	
WSH	2832	JAIL	PIERCE	MISDEMEANOR	FAXED	10/20/2015	0	0	3	.	
WSH	2833	JAIL	PIERCE	MISDEMEANOR	FAXED	10/20/2015	1	1	7	.	
WSH	2834	JAIL	SNOHOMISH	MISDEMEANOR	WITHDRAWN	10/20/2015	6	6	16	.	
WSH	2835	JAIL	KING	FELONY	FAXED	10/21/2015	0	0	23	.	
WSH	2836	JAIL	KING	FELONY	INCOMPLETE	10/21/2015	0	0	.		10
WSH	2837	JAIL	KING	MISDEMEANOR	FAXED	10/21/2015	1	1	9	.	
WSH	2838	JAIL	PIERCE	FELONY	FAXED	10/21/2015	0	0	13	.	
WSH	2839	JAIL	PIERCE	MISDEMEANOR	FAXED	10/21/2015	0	0	6	.	
WSH	2840	JAIL	PIERCE	MISDEMEANOR	FAXED	10/21/2015	0	0	8	.	
WSH	2841	JAIL	PIERCE	MISDEMEANOR	FAXED	10/21/2015	0	0	8	.	
WSH	2842	JAIL	CLARK	MISDEMEANOR	FAXED	10/22/2015	1	1	8	.	

WSH	2843	JAIL	KING	FELONY	FAXED	10/22/2015	0	0	26	.	
WSH	2844	JAIL	KING	FELONY	INCOMPLETE	10/22/2015	0	0	.		9
WSH	2845	JAIL	KING	MISDEMEANOR	INCOMPLETE	10/22/2015	4	4	.		9
WSH	2846	JAIL	KING	MISDEMEANOR	WITHDRAWN	10/22/2015	0	0	11	.	
WSH	2847	JAIL	PIERCE	FELONY	FAXED	10/22/2015	1	1	7	.	
WSH	2848	JAIL	PIERCE	MISDEMEANOR	FAXED	10/22/2015	0	0	8	.	
WSH	2849	JAIL	SKAGIT	FELONY	FAXED	10/22/2015	1	1	26	.	
WSH	2850	JAIL	SNOHOMISH	MISDEMEANOR	FAXED	10/22/2015	0	0	14	.	
WSH	2851	JAIL	CLALLAM	MISDEMEANOR	FAXED	10/23/2015	0	0	18	.	
WSH	2852	JAIL	CLARK	FELONY	FAXED	10/23/2015	3	3	7	.	
WSH	2853	JAIL	PIERCE	MISDEMEANOR	FAXED	10/23/2015	0	0	6	.	
WSH	2855	JAIL	WHATCOM	MISDEMEANOR	FAXED	10/23/2015	3	3	13	.	
WSH	2856	JAIL	KING	MISDEMEANOR	WITHDRAWN	10/24/2015	2	2	9	.	
WSH	2857	JAIL	KING	MISDEMEANOR	WITHDRAWN	10/24/2015	2	2	9	.	
WSH	2858	JAIL	KING	MISDEMEANOR	INCOMPLETE	10/24/2015	2	2	.		7
WSH	2859	JAIL	KING	MISDEMEANOR	FAXED	10/26/2015	0	0	21	.	
WSH	2860	JAIL	KING	MISDEMEANOR	FAXED	10/26/2015	0	0	15	.	
WSH	2861	JAIL	KING	MISDEMEANOR	FAXED	10/26/2015	0	0	4	.	
WSH	2864	JAIL	KING	MISDEMEANOR	FAXED	10/26/2015	1	1	3	.	
WSH	2865	JAIL	KITSAP	MISDEMEANOR	FAXED	10/26/2015	0	0	2	.	
WSH	2866	JAIL	THURSTON	FELONY	FAXED	10/26/2015	0	0	9	.	
WSH	2867	JAIL	KING	MISDEMEANOR	FAXED	10/27/2015	0	0	14	.	
WSH	2868	JAIL	KING	MISDEMEANOR	FAXED	10/27/2015	1	1	17	.	
WSH	2869	JAIL	KING	MISDEMEANOR	INCOMPLETE	10/27/2015	1	1	.		4
WSH	2870	JAIL	LEWIS	MISDEMEANOR	FAXED	10/27/2015	1	1	7	.	
WSH	2871	JAIL	PIERCE	MISDEMEANOR	FAXED	10/27/2015	1	1	6	.	
WSH	2872	JAIL	SNOHOMISH	MISDEMEANOR	FAXED	10/27/2015	1	1	16	.	
WSH	2873	INPATIENT	KING	MISDEMEANOR	BED OFFERED	10/28/2015	1	1	20	.	
WSH	2874	INPATIENT	KING	MISDEMEANOR	BED OFFERED	10/28/2015	1	1	20	.	
WSH	2875	JAIL	CLARK	FELONY	FAXED	10/28/2015	1	1	9	.	

WSH	2876	JAIL	CLARK	FELONY	FAXED	10/28/2015	5	5	9	.	
WSH	2877	JAIL	CLARK	MISDEMEANOR	FAXED	10/28/2015	0	0	9	.	
WSH	2878	JAIL	JEFFERSON	FELONY	FAXED	10/28/2015	1	1	8	.	
WSH	2879	JAIL	KING	FELONY	INCOMPLETE	10/28/2015	0	0	.		3
WSH	2880	JAIL	KING	MISDEMEANOR	FAXED	10/28/2015	0	0	8	.	
WSH	2881	JAIL	KING	MISDEMEANOR	INCOMPLETE	10/28/2015	0	0	.		3
WSH	2882	JAIL	KING	MISDEMEANOR	FAXED	10/28/2015	0	0	6	.	
WSH	2883	JAIL	KING	MISDEMEANOR	FAXED	10/28/2015	0	0	7	.	
WSH	2884	JAIL	KING	MISDEMEANOR	FAXED	10/28/2015	0	0	7	.	
WSH	2885	JAIL	MASON	MISDEMEANOR	FAXED	10/28/2015	2	2	6	.	
WSH	2886	JAIL	MASON	MISDEMEANOR	INCOMPLETE	10/28/2015	2	2	.		3
WSH	2887	JAIL	PIERCE	MISDEMEANOR	FAXED	10/28/2015	0	0	2	.	
WSH	2888	JAIL	PIERCE	MISDEMEANOR	FAXED	10/28/2015	0	0	7	.	
WSH	2889	JAIL	WHATCOM	MISDEMEANOR	INCOMPLETE	10/28/2015	1	1	.		3
WSH	2890	JAIL	KING	MISDEMEANOR	FAXED	10/29/2015	0	0	8	.	
WSH	2891	JAIL	KING	MISDEMEANOR	INCOMPLETE	10/29/2015	1	1	.		2
WSH	2892	JAIL	PIERCE	FELONY	FAXED	10/29/2015	1	1	6	.	
WSH	2893	JAIL	PIERCE	MISDEMEANOR	FAXED	10/29/2015	1	1	8	.	
WSH	3028	JAIL	KING	FELONY	TIC	9/1/2015	42	42	66	.	
WSH	3029	INPATIENT	MASON	FELONY CLASS A	INCOMPLETE	10/12/2015	1	1	.		19
WSH	3030	INPATIENT	PIERCE	FELONY CLASS A	BED OFFERED	10/14/2015	2	2	30	.	
WSH	3031	JAIL	KING	MISDEMEANOR	FAXED	10/15/2015	1	1	21	.	
WSH	3032	JAIL	KING	FELONY	INCOMPLETE	10/16/2015	0	0	.		15
WSH	3033	JAIL	KING	FELONY	FAXED	10/16/2015	17	17	32	.	
WSH	3034	JAIL	PIERCE	FELONY	FAXED	10/16/2015	18	18	24	.	
WSH	3035	JAIL	KING	MISDEMEANOR	INCOMPLETE	10/20/2015	14	14	.		11
WSH	3036	JAIL	STEVENS	MISDEMEANOR	FAXED	10/23/2015	3	3	7	.	
WSH	3037	JAIL	KING	MISDEMEANOR	FAXED	10/26/2015	0	0	3	.	
WSH	3038	JAIL	CLARK	FELONY	FAXED	10/27/2015	7	7	20	.	
WSH	3039	JAIL	CLARK	MISDEMEANOR	FAXED	10/27/2015	7	7	16	.	

WSH	3040	JAIL	CLARK	MISDEMEANOR	FAXED	10/27/2015	7	7	21	.	
WSH	3041	JAIL	CLARK	FELONY	FAXED	10/28/2015	6	6	16	.	
WSH	3042	JAIL	CLARK	MISDEMEANOR	INCOMPLETE	10/28/2015	7	7	.		3
WSH	3043	JAIL	CLARK	MISDEMEANOR	FAXED	10/28/2015	7	7	19	.	
WSH	3044	INPATIENT	THURSTON	FELONY CLASS A	BED OFFERED	10/29/2015	7	7	21	.	
WSH	3045	JAIL	KING	FELONY	INCOMPLETE	10/30/2015	3	3	.		1
WSH	3046	JAIL	KING	MISDEMEANOR	INCOMPLETE	10/30/2015	0	0	.		1
WSH	3047	JAIL	KING	MISDEMEANOR	INCOMPLETE	10/30/2015	0	4	.		1
WSH	3048	JAIL	PIERCE	MISDEMEANOR	INCOMPLETE	10/30/2015	3	3	.		1
WSH	3049	JAIL	SNOHOMISH	FELONY	FAXED	10/30/2015	0	0	18	.	
WSH	3070	JAIL	KING	FELONY	TIC	9/1/2015	42	42	66	.	
WSH	3071	INPATIENT	MASON	FELONY CLASS A	INCOMPLETE	10/12/2015	1	1	.		19
WSH	3072	INPATIENT	PIERCE	FELONY CLASS A	BED OFFERED	10/14/2015	2	2	30	.	
WSH	3073	JAIL	KING	MISDEMEANOR	FAXED	10/15/2015	1	1	21	.	
WSH	3074	JAIL	KING	FELONY	FAXED	10/16/2015	17	17	32	.	
WSH	3075	JAIL	PIERCE	FELONY	FAXED	10/16/2015	18	18	24	.	
WSH	3076	JAIL	KING	FELONY	INCOMPLETE	10/16/2015	0	0	.		15
WSH	3077	JAIL	KING	MISDEMEANOR	INCOMPLETE	10/20/2015	14	14	.		11
WSH	3078	JAIL	CLARK	FELONY	FAXED	10/27/2015	7	7	20	.	
WSH	3079	JAIL	CLARK	MISDEMEANOR	FAXED	10/27/2015	7	7	16	.	
WSH	3080	JAIL	CLARK	MISDEMEANOR	FAXED	10/27/2015	7	7	21	.	
WSH	3081	JAIL	CLARK	FELONY	FAXED	10/28/2015	6	6	16	.	
WSH	3082	JAIL	CLARK	MISDEMEANOR	FAXED	10/28/2015	7	7	19	.	
WSH	3083	JAIL	CLARK	MISDEMEANOR	INCOMPLETE	10/28/2015	7	7	.		3
WSH	3085	JAIL	KING	MISDEMEANOR	INCOMPLETE	10/30/2015	0	4	.		1
WSH	3086	JAIL	KING	MISDEMEANOR	INCOMPLETE	10/30/2015	0	0	.		1
WSH	3087	JAIL	SNOHOMISH	FELONY	FAXED	10/30/2015	0	0	18	.	
WSH	3088	JAIL	KING	FELONY	INCOMPLETE	10/30/2015	3	3	.		1
WSH	3089	JAIL	PIERCE	MISDEMEANOR	INCOMPLETE	10/30/2015	3	3	.		1
ESH	1782	JAIL	CHELAN	FELONY	FAX	7/6/2015	1	4	105	.	

ESH	1802	JAIL	OKANOGAN	FELONY	FAX	7/16/2015	1	5	106	.	
ESH	1957	JAIL	BENTON	MISDEMEANOR	FAX	7/29/2015	0	6	64	.	
ESH	2211	JAIL	CHELAN	FELONY	FAX	8/10/2015	3	4	64	.	
ESH	2212	JAIL	STEVENS	MISDEMEANOR	FAX	8/11/2015	0	2	56	.	
ESH	2220	JAIL	OKANOGAN	MISDEMEANOR	FAX	8/18/2015	7	10	57	.	
ESH	2224	JAIL	SPOKANE	FELONY	FAX	8/19/2015	0	5	44	.	
ESH	2225	JAIL	SPOKANE	FELONY	FAX	8/20/2015	5	8	43	.	
ESH	2226	JAIL	SPOKANE	MISDEMEANOR	FAX	8/21/2015	4	7	48	.	
ESH	2227	JAIL	GRANT	FELONY	FAX	8/24/2015	2	4	.		68
ESH	2232	JAIL	SPOKANE	FELONY	FAX	8/26/2015	1	2	37	.	
ESH	2236	JAIL	YAKIMA	FELONY	FAX	8/27/2015	1	1	56	.	
ESH	2328	JAIL	YAKIMA	MISDEMEANOR	FAX	8/26/2015	28	33	.		66
ESH	2329	JAIL	BENTON	FELONY	FAX	8/27/2015	4	8	53	.	
ESH	2530	JAIL	SPOKANE	FELONY	FAX	9/1/2015	1	3	41	.	
ESH	2533	JAIL	CHELAN	FELONY	FAX	9/2/2015	1	2	47	.	
ESH	2534	INPATIENT	SPOKANE	FELONY	ADMISSION	9/2/2015	21	26	.		38
ESH	2537	JAIL	YAKIMA	MISDEMEANOR	FAX	9/3/2015	6	6	49	.	
ESH	2539	JAIL	SPOKANE	FELONY	FAX	9/3/2015	0	1	42	.	
ESH	2541	JAIL	SPOKANE	FELONY	FAX	9/4/2015	11	13	53	.	
ESH	2542	JAIL	SPOKANE	FELONY	FAX	9/4/2015	0	0	31	.	
ESH	2543	INPATIENT	ADAMS	FELONY	ADMISSION	9/8/2015	1	6	30	.	
ESH	2544	JAIL	SPOKANE	MISDEMEANOR	FAX	9/9/2015	2	4	40	.	
ESH	2546	JAIL	YAKIMA	MISDEMEANOR	FAX	9/11/2015	3	3	41	.	
ESH	2547	JAIL	BENTON	MISDEMEANOR	FAX	9/11/2015	3	4	21	.	
ESH	2549	JAIL	FRANKLIN	MISDEMEANOR	FAX	9/14/2015	1	3	43	.	
ESH	2550	JAIL	YAKIMA	FELONY	FAX	9/15/2015	1	3	27	.	
ESH	2551	JAIL	FRANKLIN	FELONY	FAX	9/15/2015	7	8	34	.	
ESH	2555	JAIL	BENTON	FELONY	FAX	9/16/2015	0	5	16	.	
ESH	2557	JAIL	FRANKLIN	FELONY	FAX	9/17/2015	5	6	32	.	
ESH	2561	INPATIENT	ADAMS	FELONY	ADMISSION	9/18/2015	3	4	.		40

ESH	2562	INPATIENT	SPOKANE	FELONY	ADMISSION	9/18/2015	3	4	25	
ESH	2563	JAIL	SPOKANE	FELONY	FAX	9/21/2015	3	7	38	.
ESH	2569	JAIL	STEVENS	FELONY	FAX	9/22/2015	1	1		39
ESH	2570	JAIL	YAKIMA	FELONY	FAX	9/22/2015	2	6		39
ESH	2571	JAIL	BENTON	MISDEMEANOR	FAX	9/22/2015	0	1	10	.
ESH	2572	JAIL	BENTON	FELONY	FAX	9/23/2015	0	0	27	.
ESH	2573	JAIL	OKANOGAN	FELONY	FAX	9/23/2015	0	1	30	.
ESH	2576	JAIL	BENTON	FELONY	FAX	9/24/2015	1	4	33	.
ESH	2579	JAIL	YAKIMA	FELONY	FAX	9/25/2015	0	4	17	.
ESH	2583	JAIL	BENTON	FELONY	FAX	9/30/2015	0	0		31
ESH	2585	JAIL	SPOKANE	FELONY	FAX	9/30/2015	0	2	8	.
ESH	2894	INPATIENT	SPOKANE	FELONY	ADMISSION	7/20/2015	1	3	78	
ESH	2895	JAIL	SPOKANE	FELONY	FAX	9/16/2015	19	21		45
ESH	2896	INPATIENT	WHITMAN	FELONY	ADMISSION	9/18/2015	0	0	18	
ESH	2900	INPATIENT	PEND OREILLE	FELONY	ADMISSION	10/1/2015	1	29		29
ESH	2901	JAIL	SPOKANE	FELONY	FAX	10/6/2015	0	1		25
ESH	2902	INPATIENT	YAKIMA	FELONY	ADMISSION	10/7/2015	1	8		23
ESH	2903	JAIL	BENTON	FELONY	FAX	10/7/2015	1	1		24
ESH	2904	JAIL	BENTON	MISDEMEANOR	FAX	10/9/2015	0	4	19	.
ESH	2905	JAIL	CHELAN	FELONY	FAX	10/12/2015	1	7		19
ESH	2906	JAIL	CHELAN	MISDEMEANOR	FAX	10/12/2015	1	3		19
ESH	2907	JAIL	SPOKANE	FELONY	FAX	10/12/2015	0	0	4	.
ESH	2908	JAIL	CHELAN	MISDEMEANOR	FAX	10/13/2015	2	6		18
ESH	2910	JAIL	YAKIMA	FELONY	FAX	10/13/2015	1	6	17	.
ESH	2911	JAIL	BENTON	MISDEMEANOR	FAX	10/14/2015	1	1	9	.
ESH	2912	JAIL	SPOKANE	FELONY	FAX	10/14/2015	1	1		17
ESH	2914	JAIL	YAKIMA	MISDEMEANOR	FAX	10/19/2015	0			12
ESH	2915	INPATIENT	ASOTIN	FELONY	ADMISSION	10/20/2015	0	8		11
ESH	2916	JAIL	FRANKLIN	MISDEMEANOR	FAX	10/20/2015	0	8		11

ESH	2917	JAIL	OKANOGAN	FELONY	FAX	10/20/2015	0	.	.	11
ESH	2918	JAIL	BENTON	FELONY	FAX	10/21/2015	0	7	.	10
ESH	2919	JAIL	BENTON	FELONY	FAX	10/21/2015	0	7	.	10
ESH	2920	JAIL	BENTON	MISDEMEANOR	FAX	10/21/2015	0	7	.	10
ESH	2921	JAIL	BENTON	MISDEMEANOR	FAX	10/21/2015	0	0	.	10
ESH	2922	INPATIENT	FRANKLIN	MISDEMEANOR	ADMISSION	10/21/2015	0	7	.	10
ESH	2922	JAIL	FRANKLIN	MISDEMEANOR	FAX	10/21/2015	0	7	.	10
ESH	2924	JAIL	BENTON	FELONY	FAX	10/22/2015	0	0	.	9
ESH	2925	JAIL	GRANT	FELONY	FAX	10/22/2015	0	6	.	9
ESH	2926	JAIL	OKANOGAN	FELONY	FAX	10/22/2015	0	6	.	9
ESH	2927	JAIL	PEND OREILLE	FELONY	FAX	10/22/2015	0	6	.	9
ESH	2928	INPATIENT	SPOKANE	MISDEMEANOR	ADMISSION	10/28/2015	0	0	.	3
ESH	2929	JAIL	BENTON	MISDEMEANOR	FAX	10/28/2015	0	.	.	3
ESH	2930	JAIL	CHELAN	FELONY	FAX	10/28/2015	0	.	.	3
ESH	2931	JAIL	FRANKLIN	MISDEMEANOR	FAX	10/28/2015	0	.	.	3
ESH	2932	JAIL	OKANOGAN	FELONY	FAX	10/28/2015	0	.	.	3
ESH	2933	JAIL	YAKIMA	MISDEMEANOR	FAX	10/28/2015	0	.	.	3
ESH	2934	JAIL	CHELAN	FELONY	FAX	10/29/2015	1	.	.	2
ESH	2935	JAIL	OKANOGAN	MISDEMEANOR	FAX	10/30/2015	0	.	.	1
ESH	2936	JAIL	YAKIMA	FELONY	FAX	10/30/2015	0	.	.	1
ESH	3053	INPATIENT	FRANKLIN	FELONY	ADMISSION	10/20/2015	0	8	.	11
ESH	3054	JAIL	SPOKANE	FELONY	FAX	10/23/2015	.	.	.	8
ESH	3055	JAIL	ASOTIN	MISDEMEANOR	FAX	10/30/2015	0	.	.	1
ESH	3240	INPATIENT	CHELAN	MISDEMEANOR	ADMISSION	7/21/2015	1	2	92	
ESH	3241	INPATIENT	SPOKANE	FELONY	ADMISSION	7/31/2015	3	11	87	
ESH	3242	INPATIENT	CHELAN	MISDEMEANOR	ADMISSION	10/15/2015	0	4	.	16
ESH	3243	INPATIENT	FRANKLIN	FELONY	ADMISSION	10/20/2015	0	8	.	11
ESH	3244	JAIL	SPOKANE	FELONY	FAX	10/23/2015	.	.	.	8
ESH	3334	INPATIENT	YAKIMA	FELONY	ADMISSION	7/17/2015	0	0	89	

ESH	3335	INPATIENT	YAKIMA	MISDEMEANOR	ADMISSION	8/5/2015	1	1	70	
ESH	3336	INPATIENT	FRANKLIN	FELONY	ADMISSION	8/10/2015	0	7	.	82

Appendix B: Class Member--Restoration Information for October 2015

Hospital	Class Member	County	Offense	Completion Method or Incomplete	Order Signed Date	Number of days from signed order to:			
						Order Received	Discovery Received	Complete	Incomplete: End of Reporting Period
WSH	2254	KING	FELONY CLASS A	BED OFFERED	8/10/2015	0	0	53	
WSH	2255	KING	FELONY CLASS B	BED OFFERED	8/10/2015	0	0	53	
WSH	2264	PIERCE	FELONY CLASS B	BED OFFERED	8/12/2015	5	5	54	
WSH	2265	PIERCE	FELONY CLASS B	BED OFFERED	8/12/2015	1	1	50	
WSH	2267	PIERCE	FELONY CLASS C	BED OFFERED	8/12/2015	1	1	50	
WSH	2270	KITSAP	FELONY CLASS B	BED OFFERED	8/14/2015	0	0	48	
WSH	2273	LEWIS	FELONY CLASS C	BED OFFERED	8/17/2015	1	1	52	
WSH	2277	CLARK	FELONY CLASS B	BED OFFERED	8/19/2015	1	1	49	
WSH	2279	KING	FELONY CLASS C	BED OFFERED	8/19/2015	13	13	54	
WSH	2281	PIERCE	FELONY CLASS B	BED OFFERED	8/19/2015	1	1	48	
WSH	2283	KITSAP	FELONY CLASS B	BED OFFERED	8/20/2015	0	0	54	
WSH	2288	WHATCOM	FELONY CLASS C	INCOMPLETE	8/21/2015	3	3		71
WSH	2289	THURSTON	FELONY CLASS C	BED OFFERED	8/24/2015	1	1	53	
WSH	2290	KING	FELONY CLASS C	BED OFFERED	8/25/2015	0	0	50	
WSH	2294	KING	FELONY CLASS C	BED OFFERED	8/26/2015	1	1	56	
WSH	2297	PIERCE	FELONY CLASS C	BED OFFERED	8/26/2015	1	1	47	
WSH	2298	CLARK	FELONY CLASS B	BED OFFERED	8/27/2015	1	1	48	
WSH	2299	KING	FELONY CLASS B	BED OFFERED	8/27/2015	1	1	56	
WSH	2303	ISLAND	FELONY CLASS B	BED OFFERED	8/31/2015	1	1	46	
WSH	2331	JEFFERSON	FELONY CLASS C	BED OFFERED	8/21/2015	0	0	52	
WSH	2586	CLARK	FELONY CLASS A	BED OFFERED	9/1/2015	0	0	59	

WSH	2587	PIERCE	FELONY CLASS C	BED OFFERED	9/1/2015	1	1	45	
WSH	2589	KING	FELONY CLASS B	BED OFFERED	9/2/2015	0	0	50	
WSH	2593	PIERCE	FELONY CLASS B	BED OFFERED	9/2/2015	1	1	57	
WSH	2595	CLARK	FELONY CLASS C	BED OFFERED	9/3/2015	0	0	50	
WSH	2596	KING	FELONY CLASS B	BED OFFERED	9/3/2015	0	0	54	
WSH	2600	SNOHOMISH	FELONY CLASS C	BED OFFERED	9/4/2015	0	0	48	
WSH	2603	KING	FELONY CLASS A	BED OFFERED	9/9/2015	1	1	55	
WSH	2605	PIERCE	FELONY CLASS C	BED OFFERED	9/9/2015	1	1	47	
WSH	2606	PIERCE	FELONY CLASS C	BED OFFERED	9/9/2015	1	1	44	
WSH	2608	PIERCE	FELONY CLASS C	BED OFFERED	9/11/2015	3	3	48	
WSH	2609	SNOHOMISH	FELONY CLASS B	BED OFFERED	9/11/2015	0	0	49	
WSH	2612	MASON	FELONY CLASS C	BED OFFERED	9/14/2015	2	2	49	
WSH	2614	PIERCE	FELONY CLASS C	BED OFFERED	9/15/2015	0	0	44	
WSH	2616	KITSAP	FELONY CLASS C	BED OFFERED	9/16/2015	0	0	49	
WSH	2617	PIERCE	FELONY CLASS B	BED OFFERED	9/16/2015	1	1	51	
WSH	2621	LEWIS	FELONY CLASS C	BED OFFERED	9/17/2015	1	1	53	
WSH	2623	SNOHOMISH	FELONY CLASS C	BED OFFERED	9/17/2015	0	0	50	
WSH	2625	PACIFIC	FELONY CLASS C	BED OFFERED	9/18/2015	4	4	49	
WSH	2626	SKAGIT	FELONY CLASS A	BED OFFERED	9/18/2015	3	3	13	
WSH	2627	KING	FELONY CLASS C	BED OFFERED	9/21/2015	0	0	53	
WSH	2630	THURSTON	FELONY CLASS B	INCOMPLETE	9/21/2015	1	1	.	40
WSH	2631	CLARK	FELONY CLASS B	INCOMPLETE	9/22/2015	1	1	.	39
WSH	2633	CLARK	MISDEMEANOR	BED OFFERED	9/22/2015	3	3	17	
WSH	2635	KING	MISDEMEANOR	INCOMPLETE	9/22/2015	0	0	.	39
WSH	2636	KITSAP	FELONY CLASS B	BED OFFERED	9/22/2015	1	1	10	
WSH	2637	MASON	FELONY CLASS B	CANCELLED	9/22/2015	6	6	31	
WSH	2638	SNOHOMISH	MISDEMEANOR	BED OFFERED	9/22/2015	0	0	13	
WSH	2639	KING	FELONY CLASS B	BED OFFERED	9/23/2015	1	1	47	

WSH	2640	KING	FELONY CLASS C	INCOMPLETE	9/23/2015	1	1	.	38
WSH	2643	GRAYS HARBOR	FELONY CLASS C	BED OFFERED	9/24/2015	1	1	50	
WSH	2644	KING	MISDEMEANOR	BED OFFERED	9/25/2015	0	0	10	
WSH	2645	PACIFIC	FELONY CLASS C	INCOMPLETE	9/25/2015	3	3	.	36
WSH	2646	PIERCE	FELONY CLASS B	INCOMPLETE	9/25/2015	3	3	.	36
WSH	2647	PIERCE	MISDEMEANOR	BED OFFERED	9/25/2015	3	3	10	
WSH	2648	GRAYS HARBOR	FELONY CLASS C	INCOMPLETE	9/28/2015	1	1	.	33
WSH	2650	KITSAP	MISDEMEANOR	BED OFFERED	9/28/2015	0	0	8	
WSH	2937	PIERCE	FELONY CLASS A	BED OFFERED	8/12/2015	1	1	50	
WSH	2938	KING	FELONY CLASS A	BED OFFERED	8/18/2015	52	52	56	
WSH	2939	PIERCE	FELONY CLASS C	BED OFFERED	8/18/2015	1	1	49	
WSH	2940	PIERCE	FELONY CLASS C	BED OFFERED	9/1/2015	2	2	45	
WSH	2941	PIERCE	FELONY CLASS B	BED OFFERED	9/16/2015	7	7	43	
WSH	2942	SNOHOMISH	MISDEMEANOR	INCOMPLETE	9/21/2015	24	24	.	40
WSH	2943	CLARK	FELONY CLASS C	BED OFFERED	9/23/2015	2	2	47	
WSH	2944	PIERCE	FELONY CLASS C	INCOMPLETE	9/23/2015	2	2	.	38
WSH	2945	MASON	MISDEMEANOR	BED OFFERED	9/24/2015	4	25	32	
WSH	2946	PIERCE	FELONY CLASS B	INCOMPLETE	9/24/2015	1	1	.	37
WSH	2947	PIERCE	FELONY CLASS A	INCOMPLETE	9/25/2015	0	14	.	36
WSH	2948	ISLAND	FELONY CLASS C	BED OFFERED	9/28/2015	1	1	52	
WSH	2949	KING	FELONY CLASS C	INCOMPLETE	9/28/2015	0	0	.	33
WSH	2950	PIERCE	FELONY CLASS C	INCOMPLETE	9/28/2015	1	1	.	33
WSH	2951	KITSAP	MISDEMEANOR	BED OFFERED	9/30/2015	0	0	8	
WSH	2952	KITSAP	MISDEMEANOR	BED OFFERED	9/30/2015	0	0	8	
WSH	2953	PIERCE	FELONY CLASS A	BED OFFERED	9/30/2015	1	1	5	
WSH	2954	PIERCE	FELONY CLASS C	INCOMPLETE	9/30/2015	1	1	.	31
WSH	2955	PIERCE	FELONY CLASS C	INCOMPLETE	9/30/2015	1	1	.	31
WSH	2956	KING	FELONY CLASS B	INCOMPLETE	10/1/2015	0	0	.	30

WSH	2957	KING	FELONY CLASS B	INCOMPLETE	10/2/2015	0	0	.	29
WSH	2958	MASON	FELONY CLASS B	INCOMPLETE	10/2/2015	3	3	.	29
WSH	2959	PIERCE	FELONY CLASS A	INCOMPLETE	10/2/2015	3	3	.	29
WSH	2960	PIERCE	FELONY CLASS B	INCOMPLETE	10/2/2015	3	3	.	29
WSH	2961	CLARK	FELONY CLASS A	INCOMPLETE	10/5/2015	2	2	.	26
WSH	2962	COWLITZ	FELONY CLASS A	INCOMPLETE	10/5/2015	1	1	.	26
WSH	2963	KING	FELONY CLASS C	INCOMPLETE	10/5/2015	0	0	.	26
WSH	2964	THURSTON	FELONY CLASS B	INCOMPLETE	10/5/2015	1	1	.	26
WSH	2965	CLARK	FELONY CLASS B	INCOMPLETE	10/6/2015	1	1	.	25
WSH	2966	CLARK	FELONY CLASS C	INCOMPLETE	10/6/2015	1	1	.	25
WSH	2967	KING	FELONY CLASS B	INCOMPLETE	10/6/2015	1	1	.	25
WSH	2968	KING	MISDEMEANOR	BED OFFERED	10/6/2015	2	2	10	
WSH	2969	KING	FELONY CLASS B	INCOMPLETE	10/7/2015	1	1	.	24
WSH	2970	KITSAP	FELONY CLASS B	INCOMPLETE	10/7/2015	0	0	.	24
WSH	2971	PIERCE	FELONY CLASS A	BED OFFERED	10/7/2015	0	0	0	
WSH	2972	SNOHOMISH	MISDEMEANOR	BED OFFERED	10/7/2015	1	1	6	
WSH	2973	CLARK	FELONY CLASS C	INCOMPLETE	10/8/2015	0	0	.	23
WSH	2974	KING	FELONY CLASS B	INCOMPLETE	10/8/2015	1	1	.	23
WSH	2975	LEWIS	FELONY CLASS C	INCOMPLETE	10/8/2015	0	0	.	23
WSH	2976	PIERCE	FELONY CLASS B	BED OFFERED	10/8/2015	0	0	5	
WSH	2977	PIERCE	FELONY CLASS C	INCOMPLETE	10/8/2015	1	8	.	23
WSH	2978	THURSTON	MISDEMEANOR	BED OFFERED	10/8/2015	4	4	15	
WSH	2979	PIERCE	FELONY CLASS B	BED OFFERED	10/9/2015	3	3	11	
WSH	2980	GRAYS HARBOR	FELONY CLASS C	INCOMPLETE	10/12/2015	2	2	.	19
WSH	2981	KITSAP	MISDEMEANOR	BED OFFERED	10/12/2015	0	0	10	
WSH	2982	KING	FELONY CLASS A	INCOMPLETE	10/13/2015	0	0	.	18
WSH	2983	KING	FELONY CLASS B	INCOMPLETE	10/13/2015	0	0	.	18
WSH	2984	MASON	FELONY CLASS C	INCOMPLETE	10/13/2015	17	17	.	18

WSH	2985	CLARK	FELONY CLASS B	INCOMPLETE	10/14/2015	1	1	.	17
WSH	2986	KING	FELONY CLASS A	INCOMPLETE	10/14/2015	0	0	.	17
WSH	2987	CLARK	FELONY CLASS A	INCOMPLETE	10/15/2015	0	0	.	16
WSH	2988	PIERCE	FELONY CLASS C	INCOMPLETE	10/19/2015	1	1	.	12
WSH	2989	CLARK	MISDEMEANOR	BED OFFERED	10/20/2015	1	1	6	
WSH	2990	KING	FELONY CLASS B	INCOMPLETE	10/20/2015	0	0	.	11
WSH	2991	PIERCE	FELONY CLASS B	INCOMPLETE	10/21/2015	2	2	.	10
WSH	2992	PIERCE	FELONY CLASS B	INCOMPLETE	10/21/2015	2	2	.	10
WSH	2993	PIERCE	FELONY CLASS B	INCOMPLETE	10/21/2015	2	2	.	10
WSH	2994	PIERCE	FELONY CLASS C	INCOMPLETE	10/21/2015	2	2	.	10
WSH	2995	PIERCE	FELONY CLASS C	INCOMPLETE	10/21/2015	2	2	.	10
WSH	2996	PIERCE	FELONY CLASS C	BED OFFERED	10/21/2015	0	0	0	
WSH	2997	SNOHOMISH	MISDEMEANOR	BED OFFERED	10/21/2015	2	2	9	
WSH	2998	KING	MISDEMEANOR	BED OFFERED	10/22/2015	1	1	7	
WSH	2999	SNOHOMISH	MISDEMEANOR	BED OFFERED	10/22/2015	0	0	8	
WSH	3000	KING	MISDEMEANOR	INCOMPLETE	10/23/2015	0	0	.	8
WSH	3001	THURSTON	MISDEMEANOR	BED OFFERED	10/23/2015	0	0	6	
WSH	3002	CLARK	MISDEMEANOR	BED OFFERED	10/26/2015	1	1	9	
WSH	3003	KING	FELONY CLASS C	INCOMPLETE	10/26/2015	1	1	.	5
WSH	3004	THURSTON	FELONY CLASS B	INCOMPLETE	10/26/2015	1	1	.	5
WSH	3005	THURSTON	FELONY CLASS C	INCOMPLETE	10/26/2015	1	1	.	5
WSH	3006	THURSTON	MISDEMEANOR	BED OFFERED	10/26/2015	1	1	10	
WSH	3007	KING	FELONY CLASS B	INCOMPLETE	10/27/2015	0	0	.	4
WSH	3008	KING	FELONY CLASS C	INCOMPLETE	10/27/2015	0	0	.	4
WSH	3009	KING	FELONY CLASS B	BED OFFERED	10/28/2015	0	0	0	
WSH	3010	KING	FELONY CLASS C	INCOMPLETE	10/28/2015	0	0	.	3
WSH	3011	PIERCE	FELONY CLASS B	INCOMPLETE	10/28/2015	0	0	.	3
WSH	3012	PIERCE	FELONY CLASS C	INCOMPLETE	10/28/2015	0	0	.	3

WSH	3013	LEWIS	FELONY CLASS C	INCOMPLETE	10/29/2015	1	1	.	2
WSH	3014	PIERCE	FELONY CLASS A	INCOMPLETE	10/29/2015	0	0	.	2
WSH	3015	SKAGIT	FELONY CLASS C	INCOMPLETE	10/29/2015	1	1	.	2
WSH	3016	SNOHOMISH	FELONY CLASS B	INCOMPLETE	10/29/2015	0	0	.	2
WSH	3056	PIERCE	FELONY CLASS C	BED OFFERED	9/16/2015	1	6	48	
WSH	3057	PIERCE	FELONY CLASS C	BED OFFERED	9/23/2015	1	1	44	
WSH	3058	PIERCE	FELONY CLASS C	BED OFFERED	9/30/2015	1	1	6	
WSH	3059	THURSTON	FELONY CLASS B	BED OFFERED	10/5/2015	1	1	7	
WSH	3060	PIERCE	FELONY CLASS B	BED OFFERED	10/7/2015	0	0	0	
WSH	3061	PIERCE	FELONY CLASS C	BED OFFERED	10/9/2015	0	0	12	
WSH	3062	KING	FELONY CLASS B	BED OFFERED	10/13/2015	0	0	0	
WSH	3063	PIERCE	FELONY CLASS C	BED OFFERED	10/14/2015	1	1	7	
WSH	3064	SNOHOMISH	FELONY CLASS B	BED OFFERED	10/16/2015	0	0	0	
WSH	3065	WHATCOM	FELONY CLASS C	INCOMPLETE	10/19/2015	0	0	.	12
WSH	3066	SNOHOMISH	FELONY CLASS C	BED OFFERED	10/22/2015	0	0	0	
WSH	3067	CLARK	FELONY CLASS B	INCOMPLETE	10/27/2015	8	8	.	4
WSH	3068	PIERCE	FELONY CLASS C	BED OFFERED	10/28/2015	1	1	5	
WSH	3069	THURSTON	MISDEMEANOR	BED OFFERED	10/30/2015	3	3	6	
WSH	3275	PIERCE	FELONY CLASS C	BED OFFERED	9/16/2015	1	6	48	
WSH	3276	PIERCE	FELONY CLASS C	BED OFFERED	9/23/2015	1	1	44	
WSH	3278	WHATCOM	FELONY CLASS C	INCOMPLETE	10/19/2015	0	0	.	12
WSH	3279	CLARK	FELONY CLASS B	INCOMPLETE	10/27/2015	8	8	.	4
WSH	3280	PIERCE	FELONY CLASS C	BED OFFERED	10/28/2015	1	1	5	
WSH	3281	THURSTON	MISDEMEANOR	BED OFFERED	10/30/2015	3	3	6	
ESH	1859	SPOKANE	FELONY	ADMISSION	7/8/2015	2	5	97	
ESH	1862	YAKIMA	FELONY	ADMISSION	7/20/2015	1	1	93	
ESH	1993	CHELAN	FELONY	ADMISSION	7/20/2015	0	3	93	
ESH	1995	FRANKLIN	FELONY	ADMISSION	7/28/2015	3	8	.	95

ESH	2307	SPOKANE	FELONY	ADMISSION	7/21/2015	15	21	.	102
ESH	2309	WALLA WALLA	FELONY	ADMISSION	8/4/2015	1	7	.	88
ESH	2310	YAKIMA	FELONY	ADMISSION	8/4/2015	1	1	85	
ESH	2311	CHELAN	FELONY	ADMISSION	8/5/2015	1	6	.	87
ESH	2315	SPOKANE	FELONY	ADMISSION	8/24/2015	0	1	.	68
ESH	2318	SPOKANE	FELONY	ADMISSION	8/26/2015	0	5	55	
ESH	2334	SPOKANE	FELONY	ADMISSION	8/20/2015	5	5	.	72
ESH	2654	OKANOGAN	FELONY	ADMISSION	9/4/2015	0	4	.	57
ESH	2656	BENTON	FELONY	ADMISSION	9/8/2015	15	17	.	53
ESH	2657	WALLA WALLA	FELONY	ADMISSION	9/8/2015	3	7	.	53
ESH	2658	SPOKANE	FELONY	ADMISSION	9/11/2015	0	4	.	50
ESH	2661	SPOKANE	MISDEMEANOR	ADMISSION	9/16/2015	1	1	.	45
ESH	2662	BENTON	FELONY	ADMISSION	9/24/2015	1	1	.	37
ESH	2663	BENTON	MISDEMEANOR	ADMISSION	9/25/2015	0	3	.	36
ESH	2664	CHELAN	FELONY	ADMISSION	9/28/2015	0	1	.	33
ESH	2665	BENTON	FELONY	ADMISSION	9/29/2015	0	2	.	32
ESH	3018	SPOKANE	FELONY	ADMISSION	7/21/2015	0	36	97	
ESH	3019	YAKIMA	FELONY	ADMISSION	7/28/2015	0	0	92	
ESH	3020	BENTON	FELONY	ADMISSION	9/24/2015	0	1	.	37
ESH	3020	BENTON	FELONY	ADMISSION	9/24/2015	0	1	.	37
ESH	3021	SPOKANE	FELONY	ADMISSION	10/8/2015	0	0	.	23
ESH	3022	SPOKANE	FELONY	ADMISSION	10/12/2015	9	9	.	19
ESH	3023	YAKIMA	FELONY	ADMISSION	10/14/2015	5	5	.	17
ESH	3024	YAKIMA	FELONY	ADMISSION	10/20/2015	3	3	.	11
ESH	3025	BENTON	FELONY	ADMISSION	10/21/2015	0	4	.	10
ESH	3025	BENTON	MISDEMEANOR	ADMISSION	10/21/2015	0	4	.	10
ESH	3026	BENTON	FELONY	ADMISSION	10/21/2015	0	4	.	10
ESH	3026	BENTON	MISDEMEANOR	ADMISSION	10/21/2015	0	4	.	10

ESH	3027	SPOKANE	FELONY	ADMISSION	10/28/2015	0		.	3
ESH	3337	COLUMBIA	MISDEMEANOR	ADMISSION	8/11/2015	9	13	.	81
ESH	3338	YAKIMA	MISDEMEANOR	ADMISSION	8/25/2015	0	1	.	67
ESH	3339	YAKIMA	FELONY	ADMISSION	9/11/2015	2	2	.	50
ESH	3340	FRANKLIN	FELONY	ADMISSION	10/27/2015	42	42	.	4

Appendix C: Class Member--Evaluation Information for November 2015

Hospital	Class Member	Location	County	Offense	Completion Method or Incomplete	Order Signed Date	Number of days from signed order to:			
							Order Received	Discovery Received	Complete	Incomplete: End of Reporting Period
WSH	2348	JAIL	KING	MISDEMEANOR	WITHDRAWN	9/2/2015	7	7	64	.
WSH	2464	JAIL	SKAGIT	FELONY	FAXED	9/17/2015	0	0	21	.
WSH	2465	JAIL	SNOHOMISH	MISDEMEANOR	INCOMPLETE	9/17/2015	0	0	.	74
WSH	2470	JAIL	KING	MISDEMEANOR	INCOMPLETE	9/18/2015	0	0	.	73
WSH	2494	JAIL	COWLITZ	FELONY	FAXED	9/23/2015	0	0	44	.
WSH	2510	JAIL	THURSTON	FELONY	INCOMPLETE	9/24/2015	0	0	.	67
WSH	2527	JAIL	KITSAP	MISDEMEANOR	FAXED	9/29/2015	1	1	7	.
WSH	2529	JAIL	SNOHOMISH	MISDEMEANOR	INCOMPLETE	9/30/2015	0	0	.	61
WSH	2686	JAIL	KING	FELONY	FAXED	9/30/2015	1	1	44	.
WSH	2687	JAIL	KING	FELONY	INCOMPLETE	9/30/2015	1	1	.	61
WSH	2698	JAIL	KING	FELONY	FAXED	10/1/2015	0	0	27	.
WSH	2713	JAIL	CLARK	FELONY	FAXED	10/5/2015	0	0	35	.
WSH	2714	JAIL	KING	FELONY	TIC	10/5/2015	0	0	28	.
WSH	2719	JAIL	PIERCE	MISDEMEANOR	WITHDRAWN	10/5/2015	0	0	2	.
WSH	2728	JAIL	KING	FELONY	FAXED	10/7/2015	1	1	29	.
WSH	2736	JAIL	PIERCE	FELONY	FAXED	10/7/2015	6	6	15	.
WSH	2738	JAIL	SNOHOMISH	MISDEMEANOR	WITHDRAWN	10/7/2015	12	12	29	.
WSH	2745	JAIL	KING	FELONY	FAXED	10/8/2015	0	0	36	.
WSH	2758	JAIL	WHATCOM	MISDEMEANOR	FAXED	10/8/2015	6	6	27	.
WSH	2760	JAIL	KING	FELONY	INCOMPLETE	10/9/2015	4	4	.	52
WSH	2763	JAIL	KING	MISDEMEANOR	FAXED	10/10/2015	6	12	27	.
WSH	2764	INPATIENT	KING	FELONY CLASS B	BED OFFERED	10/12/2015	0	0	21	.
WSH	2766	JAIL	KING	MISDEMEANOR	FAXED	10/12/2015	0	0	21	.
WSH	2767	JAIL	KING	FELONY	FAXED	10/12/2015	1	1	49	.

WSH	2768	JAIL	KING	FELONY	WITHDRAWN	10/12/2015	1	1	24	.	
WSH	2769	JAIL	KING	FELONY	FAXED	10/12/2015	1	1	37	.	
WSH	2772	JAIL	KING	MISDEMEANOR	INCOMPLETE	10/12/2015	0	1	.		49
WSH	2780	JAIL	MASON	FELONY	INCOMPLETE	10/12/2015	1	1	.		49
WSH	2782	JAIL	THURSTON	MISDEMEANOR	INCOMPLETE	10/12/2015	0	0	.		49
WSH	2783	INPATIENT	KING	MISDEMEANOR	BED OFFERED	10/13/2015	1	1	20	.	
WSH	2784	INPATIENT	KING	MISDEMEANOR	BED OFFERED	10/13/2015	1	1	22	.	
WSH	2786	JAIL	KING	MISDEMEANOR	FAXED	10/13/2015	0	0	24	.	
WSH	2787	JAIL	KING	MISDEMEANOR	FAXED	10/13/2015	0	0	21	.	
WSH	2788	JAIL	KING	MISDEMEANOR	FAXED	10/13/2015	0	0	24	.	
WSH	2789	JAIL	KING	MISDEMEANOR	FAXED	10/13/2015	0	0	24	.	
WSH	2790	JAIL	KING	MISDEMEANOR	TIC	10/13/2015	0	0	20	.	
WSH	2795	INPATIENT	THURSTON	FELONY CLASS C	BED OFFERED	10/14/2015	6	6	29	.	
WSH	2799	JAIL	KING	MISDEMEANOR	INCOMPLETE	10/14/2015	0	0	.		47
WSH	2800	JAIL	KING	MISDEMEANOR	FAXED	10/14/2015	0	0	19	.	
WSH	2801	JAIL	KING	MISDEMEANOR	FAXED	10/14/2015	7	7	23	.	
WSH	2807	JAIL	KING	FELONY	TIC	10/15/2015	0	0	22	.	
WSH	2815	JAIL	CLALLAM	FELONY	FAXED	10/16/2015	0	0	19	.	
WSH	2821	JAIL	PIERCE	FELONY	INCOMPLETE	10/16/2015	10	10	.		45
WSH	2824	INPATIENT	PIERCE	FELONY CLASS B	BED OFFERED	10/19/2015	0	0	24	.	
WSH	2825	JAIL	KING	FELONY	TIC	10/19/2015	0	0	24	.	
WSH	2826	JAIL	KING	MISDEMEANOR	INCOMPLETE	10/19/2015	0	0	.		42
WSH	2827	JAIL	KING	MISDEMEANOR	WITHDRAWN	10/19/2015	0	0	16	.	
WSH	2830	JAIL	MASON	FELONY	FAXED	10/19/2015	11	11	22	.	
WSH	2834	JAIL	SNOHOMISH	MISDEMEANOR	WITHDRAWN	10/20/2015	6	6	16	.	
WSH	2835	JAIL	KING	FELONY	FAXED	10/21/2015	0	0	23	.	
WSH	2836	JAIL	KING	FELONY	INCOMPLETE	10/21/2015	0	0	.		40
WSH	2838	JAIL	PIERCE	FELONY	FAXED	10/21/2015	0	0	13	.	
WSH	2843	JAIL	KING	FELONY	FAXED	10/22/2015	0	0	26	.	
WSH	2844	JAIL	KING	FELONY	INCOMPLETE	10/22/2015	0	0	.		39

WSH	2845	JAIL	KING	MISDEMEANOR	FAXED	10/22/2015	4	4	27	.
WSH	2846	JAIL	KING	MISDEMEANOR	WITHDRAWN	10/22/2015	0	0	11	.
WSH	2849	JAIL	SKAGIT	FELONY	FAXED	10/22/2015	1	1	26	.
WSH	2850	JAIL	SNOHOMISH	MISDEMEANOR	FAXED	10/22/2015	0	0	14	.
WSH	2851	JAIL	CLALLAM	MISDEMEANOR	FAXED	10/23/2015	0	0	18	.
WSH	2855	JAIL	WHATCOM	MISDEMEANOR	FAXED	10/23/2015	3	3	13	.
WSH	2856	JAIL	KING	MISDEMEANOR	WITHDRAWN	10/24/2015	2	2	9	.
WSH	2857	JAIL	KING	MISDEMEANOR	WITHDRAWN	10/24/2015	2	2	9	.
WSH	2858	JAIL	KING	MISDEMEANOR	FAXED	10/24/2015	2	2	37	.
WSH	2859	JAIL	KING	MISDEMEANOR	FAXED	10/26/2015	0	0	21	.
WSH	2860	JAIL	KING	MISDEMEANOR	FAXED	10/26/2015	0	0	15	.
WSH	2866	JAIL	THURSTON	FELONY	FAXED	10/26/2015	0	0	9	.
WSH	2867	JAIL	KING	MISDEMEANOR	FAXED	10/27/2015	0	0	14	.
WSH	2868	JAIL	KING	MISDEMEANOR	FAXED	10/27/2015	1	1	17	.
WSH	2869	JAIL	KING	MISDEMEANOR	FAXED	10/27/2015	1	1	21	.
WSH	2870	JAIL	LEWIS	MISDEMEANOR	FAXED	10/27/2015	1	1	7	.
WSH	2871	JAIL	PIERCE	MISDEMEANOR	FAXED	10/27/2015	1	1	6	.
WSH	2872	JAIL	SNOHOMISH	MISDEMEANOR	FAXED	10/27/2015	1	1	16	.
WSH	2873	INPATIENT	KING	MISDEMEANOR	BED OFFERED	10/28/2015	1	1	20	.
WSH	2874	INPATIENT	KING	MISDEMEANOR	BED OFFERED	10/28/2015	1	1	20	.
WSH	2875	JAIL	CLARK	FELONY	FAXED	10/28/2015	1	1	9	.
WSH	2876	JAIL	CLARK	FELONY	FAXED	10/28/2015	5	5	9	.
WSH	2877	JAIL	CLARK	MISDEMEANOR	FAXED	10/28/2015	0	0	9	.
WSH	2878	JAIL	JEFFERSON	FELONY	FAXED	10/28/2015	1	1	8	.
WSH	2879	JAIL	KING	FELONY	INCOMPLETE	10/28/2015	0	0	.	33
WSH	2880	JAIL	KING	MISDEMEANOR	FAXED	10/28/2015	0	0	8	.
WSH	2881	JAIL	KING	MISDEMEANOR	FAXED	10/28/2015	0	0	22	.
WSH	2882	JAIL	KING	MISDEMEANOR	FAXED	10/28/2015	0	0	6	.
WSH	2883	JAIL	KING	MISDEMEANOR	FAXED	10/28/2015	0	0	7	.
WSH	2884	JAIL	KING	MISDEMEANOR	FAXED	10/28/2015	0	0	7	.

WSH	2885	JAIL	MASON	MISDEMEANOR	FAXED	10/28/2015	2	2	6	.	
WSH	2886	JAIL	MASON	MISDEMEANOR	INCOMPLETE	10/28/2015	2	2	.		33
WSH	2888	JAIL	PIERCE	MISDEMEANOR	FAXED	10/28/2015	0	0	7	.	
WSH	2889	JAIL	WHATCOM	MISDEMEANOR	INCOMPLETE	10/28/2015	1	1	.		33
WSH	2890	JAIL	KING	MISDEMEANOR	FAXED	10/29/2015	0	0	8	.	
WSH	2891	JAIL	KING	MISDEMEANOR	FAXED	10/29/2015	1	1	20	.	
WSH	2892	JAIL	PIERCE	FELONY	FAXED	10/29/2015	1	1	6	.	
WSH	2893	JAIL	PIERCE	MISDEMEANOR	FAXED	10/29/2015	1	1	8	.	
WSH	3028	JAIL	KING	FELONY	TIC	9/1/2015	42	42	66	.	
WSH	3029	INPATIENT	MASON	FELONY CLASS A	BED OFFERED	10/12/2015	1	1	39		0
WSH	3030	INPATIENT	PIERCE	FELONY CLASS A	BED OFFERED	10/14/2015	2	2	30	.	
WSH	3031	JAIL	KING	MISDEMEANOR	FAXED	10/15/2015	1	1	21	.	
WSH	3032	JAIL	KING	FELONY	INCOMPLETE	10/16/2015	0	0	.		45
WSH	3033	JAIL	KING	FELONY	FAXED	10/16/2015	17	17	32	.	
WSH	3034	JAIL	PIERCE	FELONY	FAXED	10/16/2015	18	18	24	.	
WSH	3035	JAIL	KING	MISDEMEANOR	INCOMPLETE	10/20/2015	14	14	.		41
WSH	3038	JAIL	CLARK	FELONY	FAXED	10/27/2015	7	7	20	.	
WSH	3039	JAIL	CLARK	MISDEMEANOR	FAXED	10/27/2015	7	7	16	.	
WSH	3040	JAIL	CLARK	MISDEMEANOR	FAXED	10/27/2015	7	7	21	.	
WSH	3041	JAIL	CLARK	FELONY	FAXED	10/28/2015	6	6	16	.	
WSH	3042	JAIL	CLARK	MISDEMEANOR	INCOMPLETE	10/28/2015	7	7	.		33
WSH	3043	JAIL	CLARK	MISDEMEANOR	FAXED	10/28/2015	7	7	19	.	
WSH	3045	JAIL	KING	FELONY	INCOMPLETE	10/30/2015	3	3	.		31
WSH	3046	JAIL	KING	MISDEMEANOR	FAXED	10/30/2015	0	0	21	.	
WSH	3047	JAIL	KING	MISDEMEANOR	FAXED	10/30/2015	0	4	20	.	
WSH	3048	JAIL	PIERCE	MISDEMEANOR	INCOMPLETE	10/30/2015	3	3	.		31
WSH	3049	JAIL	SNOHOMISH	FELONY	FAXED	10/30/2015	0	0	18	.	
WSH	3070	JAIL	KING	FELONY	TIC	9/1/2015	42	42	66	.	
WSH	3071	INPATIENT	MASON	FELONY CLASS A	BED OFFERED	10/12/2015	1	1	39		0
WSH	3072	INPATIENT	PIERCE	FELONY CLASS A	BED OFFERED	10/14/2015	2	2	30	.	

WSH	3073	JAIL	KING	MISDEMEANOR	FAXED	10/15/2015	1	1	21	.
WSH	3074	JAIL	KING	FELONY	FAXED	10/16/2015	17	17	32	.
WSH	3075	JAIL	PIERCE	FELONY	FAXED	10/16/2015	18	18	24	.
WSH	3076	JAIL	KING	FELONY	INCOMPLETE	10/16/2015	0	0	.	45
WSH	3077	JAIL	KING	MISDEMEANOR	INCOMPLETE	10/20/2015	14	14	.	41
WSH	3078	JAIL	CLARK	FELONY	FAXED	10/27/2015	7	7	20	.
WSH	3079	JAIL	CLARK	MISDEMEANOR	FAXED	10/27/2015	7	7	16	.
WSH	3080	JAIL	CLARK	MISDEMEANOR	FAXED	10/27/2015	7	7	21	.
WSH	3081	JAIL	CLARK	FELONY	FAXED	10/28/2015	6	6	16	.
WSH	3082	JAIL	CLARK	MISDEMEANOR	FAXED	10/28/2015	7	7	19	.
WSH	3083	JAIL	CLARK	MISDEMEANOR	INCOMPLETE	10/28/2015	7	7	.	33
WSH	3084	INPATIENT	THURSTON	FELONY CLASS A	BED OFFERED	10/29/2015	7	7	21	.
WSH	3085	JAIL	KING	MISDEMEANOR	FAXED	10/30/2015	0	4	20	.
WSH	3086	JAIL	KING	MISDEMEANOR	FAXED	10/30/2015	0	0	21	.
WSH	3087	JAIL	SNOHOMISH	FELONY	FAXED	10/30/2015	0	0	18	.
WSH	3088	JAIL	KING	FELONY	INCOMPLETE	10/30/2015	3	3	.	31
WSH	3089	JAIL	PIERCE	MISDEMEANOR	INCOMPLETE	10/30/2015	3	3	.	31
WSH	3090	INPATIENT	KING	FELONY CLASS B	BED OFFERED	11/2/2015	0	0	21	.
WSH	3091	INPATIENT	KING	MISDEMEANOR	BED OFFERED	11/2/2015	1	1	23	.
WSH	3092	JAIL	CLARK	FELONY	FAXED	11/2/2015	1	1	14	.
WSH	3093	JAIL	GRAYS HARBOR	FELONY	FAXED	11/2/2015	0	4	8	.
WSH	3094	JAIL	KING	FELONY	FAXED	11/2/2015	0	0	21	.
WSH	3095	JAIL	KING	MISDEMEANOR	FAXED	11/2/2015	0	0	7	.
WSH	3096	JAIL	KING	MISDEMEANOR	FAXED	11/2/2015	0	0	18	.
WSH	3097	JAIL	MASON	FELONY	FAXED	11/2/2015	1	1	2	.
WSH	3098	JAIL	THURSTON	MISDEMEANOR	FAXED	11/2/2015	1	1	8	.
WSH	3099	JAIL	THURSTON	MISDEMEANOR	FAXED	11/2/2015	0	1	16	.
WSH	3100	JAIL	KING	MISDEMEANOR	TIC	11/2/2015	0	0	2	.
WSH	3101	JAIL	KING	MISDEMEANOR	WITHDRAWN	11/2/2015	0	0	7	.
WSH	3102	JAIL	KING	MISDEMEANOR	WITHDRAWN	11/2/2015	0	0	7	.

WSH	3103	INPATIENT	PIERCE	FELONY CLASS B	BED OFFERED	11/3/2015	0	0	0	.	
WSH	3104	JAIL	CLARK	FELONY	FAXED	11/3/2015	2	2	16	.	
WSH	3105	JAIL	CLARK	MISDEMEANOR	FAXED	11/3/2015	2	2	14	.	
WSH	3106	JAIL	KING	MISDEMEANOR	FAXED	11/3/2015	1	1	15	.	
WSH	3107	JAIL	PIERCE	FELONY	FAXED	11/3/2015	0	0	12	.	
WSH	3108	JAIL	PIERCE	FELONY	FAXED	11/3/2015	2	2	21	.	
WSH	3109	JAIL	PIERCE	MISDEMEANOR	FAXED	11/3/2015	0	0	7	.	
WSH	3110	JAIL	SNOHOMISH	MISDEMEANOR	FAXED	11/3/2015	0	0	10	.	
WSH	3111	JAIL	THURSTON	FELONY	FAXED	11/3/2015	0	0	21	.	
WSH	3112	INPATIENT	PIERCE	MISDEMEANOR	INCOMPLETE	11/3/2015	10	10	.		27
WSH	3113	JAIL	PIERCE	MISDEMEANOR	TIC	11/3/2015	0	0	10	.	
WSH	3114	INPATIENT	KING	MISDEMEANOR	BED OFFERED	11/4/2015	1	1	20	.	
WSH	3115	INPATIENT	PIERCE	FELONY CLASS C	BED OFFERED	11/4/2015	1	1	26	.	
WSH	3116	JAIL	KING	MISDEMEANOR	FAXED	11/4/2015	1	1	20	.	
WSH	3117	JAIL	PIERCE	FELONY	FAXED	11/4/2015	1	1	9	.	
WSH	3118	JAIL	PIERCE	MISDEMEANOR	FAXED	11/4/2015	0	0	9	.	
WSH	3119	JAIL	PIERCE	MISDEMEANOR	FAXED	11/4/2015	1	1	9	.	
WSH	3120	JAIL	PIERCE	MISDEMEANOR	FAXED	11/4/2015	0	0	14	.	
WSH	3121	JAIL	SNOHOMISH	MISDEMEANOR	FAXED	11/4/2015	1	5	8	.	
WSH	3122	JAIL	SNOHOMISH	MISDEMEANOR	FAXED	11/4/2015	0	0	14	.	
WSH	3123	JAIL	KING	MISDEMEANOR	INCOMPLETE	11/4/2015	1	1	.		26
WSH	3124	JAIL	GRAYS HARBOR	MISDEMEANOR	FAXED	11/5/2015	0	0	8	.	
WSH	3125	JAIL	KING	MISDEMEANOR	FAXED	11/5/2015	0	0	7	.	
WSH	3126	JAIL	KING	MISDEMEANOR	FAXED	11/5/2015	0	0	8	.	
WSH	3127	JAIL	KING	MISDEMEANOR	FAXED	11/5/2015	0	0	14	.	
WSH	3128	JAIL	KING	MISDEMEANOR	FAXED	11/5/2015	0	0	15	.	
WSH	3129	JAIL	PIERCE	MISDEMEANOR	FAXED	11/5/2015	0	0	11	.	
WSH	3130	JAIL	SNOHOMISH	FELONY	FAXED	11/5/2015	0	0	7	.	
WSH	3131	JAIL	SNOHOMISH	FELONY	FAXED	11/5/2015	0	0	15	.	
WSH	3132	INPATIENT	KING	FELONY CLASS C	INCOMPLETE	11/5/2015	0	0	.		25

WSH	3133	JAIL	KING	FELONY	INCOMPLETE	11/5/2015	0	0	.	25
WSH	3134	JAIL	KING	FELONY	INCOMPLETE	11/5/2015	1	1	.	25
WSH	3135	JAIL	KING	MISDEMEANOR	INCOMPLETE	11/5/2015	0	0	.	25
WSH	3136	JAIL	KING	MISDEMEANOR	WITHDRAWN	11/5/2015	0	0	7	.
WSH	3137	JAIL	CLARK	MISDEMEANOR	FAXED	11/6/2015	3	3	11	.
WSH	3138	JAIL	KING	MISDEMEANOR	FAXED	11/6/2015	0	0	18	.
WSH	3139	JAIL	SNOHOMISH	FELONY	FAXED	11/6/2015	6	4	7	.
WSH	3140	JAIL	SNOHOMISH	MISDEMEANOR	INCOMPLETE	11/6/2015	0	0	.	24
WSH	3141	JAIL	KING	MISDEMEANOR	WITHDRAWN	11/6/2015	0	0	3	.
WSH	3142	JAIL	KING	MISDEMEANOR	WITHDRAWN	11/6/2015	0	0	7	.
WSH	3143	JAIL	GRAYS HARBOR	FELONY	FAXED	11/9/2015	1	1	11	.
WSH	3144	JAIL	KING	MISDEMEANOR	FAXED	11/9/2015	1	1	9	.
WSH	3145	JAIL	KING	MISDEMEANOR	FAXED	11/9/2015	0	0	10	.
WSH	3146	JAIL	PIERCE	MISDEMEANOR	FAXED	11/9/2015	1	1	4	.
WSH	3147	JAIL	PIERCE	MISDEMEANOR	FAXED	11/9/2015	1	1	9	.
WSH	3148	INPATIENT	KING	MISDEMEANOR	INCOMPLETE	11/9/2015	1	1	.	21
WSH	3149	JAIL	KING	FELONY	INCOMPLETE	11/9/2015	0	0	.	21
WSH	3150	JAIL	KING	FELONY	INCOMPLETE	11/9/2015	1	1	.	21
WSH	3151	JAIL	KING	MISDEMEANOR	FAXED	11/10/2015	2	2	14	.
WSH	3152	JAIL	KING	MISDEMEANOR	FAXED	11/10/2015	3	3	20	.
WSH	3153	JAIL	SNOHOMISH	MISDEMEANOR	FAXED	11/10/2015	0	0	6	.
WSH	3154	JAIL	JEFFERSON	FELONY	INCOMPLETE	11/10/2015	0	0	.	20
WSH	3155	JAIL	KING	FELONY	INCOMPLETE	11/10/2015	0	0	.	20
WSH	3156	JAIL	KING	FELONY	INCOMPLETE	11/10/2015	0	0	.	20
WSH	3157	JAIL	GRAYS HARBOR	MISDEMEANOR	FAXED	11/12/2015	1	1	6	.
WSH	3158	JAIL	GRAYS HARBOR	MISDEMEANOR	FAXED	11/12/2015	1	1	6	.
WSH	3159	JAIL	GRAYS HARBOR	MISDEMEANOR	FAXED	11/12/2015	1	1	7	.
WSH	3160	JAIL	KING	MISDEMEANOR	FAXED	11/12/2015	0	0	7	.
WSH	3161	JAIL	KING	MISDEMEANOR	FAXED	11/12/2015	0	0	7	.
WSH	3162	JAIL	KING	MISDEMEANOR	FAXED	11/12/2015	0	0	18	.

WSH	3163	JAIL	KITSAP	MISDEMEANOR	FAXED	11/12/2015	0	0	1	.	
WSH	3164	JAIL	PIERCE	MISDEMEANOR	FAXED	11/12/2015	0	0	6	.	
WSH	3165	INPATIENT	KING	FELONY CLASS B	INCOMPLETE	11/12/2015	0	0	.		18
WSH	3166	INPATIENT	KING	FELONY CLASS B	INCOMPLETE	11/12/2015	1	1	.		18
WSH	3167	JAIL	GRAYS HARBOR	FELONY	INCOMPLETE	11/12/2015	1	1	.		18
WSH	3168	JAIL	KING	FELONY	INCOMPLETE	11/12/2015	0	0	.		18
WSH	3169	JAIL	KING	FELONY	INCOMPLETE	11/12/2015	0	0	.		18
WSH	3170	JAIL	KING	FELONY	INCOMPLETE	11/12/2015	0	0	.		18
WSH	3171	JAIL	KING	FELONY	INCOMPLETE	11/12/2015	0	0	.		18
WSH	3172	JAIL	KING	MISDEMEANOR	INCOMPLETE	11/12/2015	0	0	.		18
WSH	3173	JAIL	KING	MISDEMEANOR	INCOMPLETE	11/12/2015	1	1	.		18
WSH	3174	JAIL	SKAGIT	FELONY	INCOMPLETE	11/12/2015	0	0	.		18
WSH	3175	JAIL	CLARK	FELONY	FAXED	11/13/2015	3	3	10	.	
WSH	3176	JAIL	CLARK	MISDEMEANOR	FAXED	11/13/2015	0	0	7	.	
WSH	3177	JAIL	KING	FELONY	FAXED	11/13/2015	0	0	11	.	
WSH	3178	JAIL	KING	MISDEMEANOR	FAXED	11/13/2015	3	3	7	.	
WSH	3179	JAIL	PIERCE	MISDEMEANOR	FAXED	11/13/2015	0	0	4	.	
WSH	3180	JAIL	CLARK	MISDEMEANOR	INCOMPLETE	11/13/2015	0	0	.		17
WSH	3181	JAIL	KING	FELONY	INCOMPLETE	11/13/2015	0	0	.		17
WSH	3182	JAIL	MASON	FELONY	INCOMPLETE	11/13/2015	3	3	.		17
WSH	3183	JAIL	SKAGIT	FELONY	INCOMPLETE	11/13/2015	0	0	.		17
WSH	3184	JAIL	SNOHOMISH	MISDEMEANOR	INCOMPLETE	11/13/2015	0	0	.		17
WSH	3185	JAIL	SNOHOMISH	MISDEMEANOR	INCOMPLETE	11/13/2015	0	0	.		17
WSH	3186	JAIL	KING	MISDEMEANOR	WITHDRAWN	11/13/2015	0	0	4	.	
WSH	3187	JAIL	KING	MISDEMEANOR	FAXED	11/16/2015	0	0	7	.	
WSH	3188	JAIL	KING	MISDEMEANOR	INCOMPLETE	11/16/2015	1	1	.		14
WSH	3189	JAIL	KING	MISDEMEANOR	INCOMPLETE	11/16/2015	1	1	.		14
WSH	3190	JAIL	KING	MISDEMEANOR	INCOMPLETE	11/16/2015	0	0	.		14
WSH	3191	JAIL	KING	MISDEMEANOR	INCOMPLETE	11/16/2015	0	0	.		14
WSH	3192	JAIL	KING	MISDEMEANOR	INCOMPLETE	11/16/2015	1	1	.		14

WSH	3193	JAIL	SNOHOMISH	MISDEMEANOR	INCOMPLETE	11/16/2015	0	0	.	14
WSH	3194	JAIL	KING	MISDEMEANOR	FAXED	11/17/2015	2	2	7	.
WSH	3195	JAIL	CLARK	MISDEMEANOR	INCOMPLETE	11/17/2015	3	3	.	13
WSH	3196	JAIL	KING	FELONY	INCOMPLETE	11/17/2015	0	0	.	13
WSH	3197	JAIL	KING	MISDEMEANOR	INCOMPLETE	11/17/2015	1	1	.	13
WSH	3198	JAIL	KING	MISDEMEANOR	INCOMPLETE	11/17/2015	1	1	.	13
WSH	3199	JAIL	PIERCE	MISDEMEANOR	INCOMPLETE	11/17/2015	3	3	.	13
WSH	3200	JAIL	SNOHOMISH	MISDEMEANOR	INCOMPLETE	11/17/2015	0	0	.	13
WSH	3201	JAIL	PIERCE	MISDEMEANOR	FAXED	11/18/2015	0	1	6	.
WSH	3202	INPATIENT	KING	FELONY CLASS B	INCOMPLETE	11/18/2015	1	1	.	12
WSH	3203	JAIL	KING	MISDEMEANOR	INCOMPLETE	11/18/2015	0	0	.	12
WSH	3204	JAIL	CLARK	FELONY	FAXED	11/19/2015	0	0	5	.
WSH	3205	JAIL	CLARK	FELONY	FAXED	11/19/2015	1	1	6	.
WSH	3206	JAIL	GRAYS HARBOR	MISDEMEANOR	FAXED	11/19/2015	1	1	6	.
WSH	3207	JAIL	COWLITZ	FELONY	INCOMPLETE	11/19/2015	4	4	.	11
WSH	3208	JAIL	KING	FELONY	INCOMPLETE	11/19/2015	1	1	.	11
WSH	3209	JAIL	KING	MISDEMEANOR	INCOMPLETE	11/19/2015	1	1	.	11
WSH	3210	JAIL	SNOHOMISH	FELONY	INCOMPLETE	11/19/2015	0	0	.	11
WSH	3211	JAIL	SNOHOMISH	MISDEMEANOR	INCOMPLETE	11/19/2015	0	0	.	11
WSH	3212	JAIL	THURSTON	MISDEMEANOR	INCOMPLETE	11/19/2015	1	1	.	11
WSH	3213	JAIL	WHATCOM	FELONY	INCOMPLETE	11/19/2015	1	1	.	11
WSH	3214	JAIL	WHATCOM	FELONY	INCOMPLETE	11/19/2015	4	4	.	11
WSH	3215	JAIL	CLARK	FELONY	FAXED	11/20/2015	0	0	5	.
WSH	3216	JAIL	KITSAP	MISDEMEANOR	FAXED	11/20/2015	0	0	4	.
WSH	3217	JAIL	KING	FELONY	INCOMPLETE	11/20/2015	3	3	.	10
WSH	3218	JAIL	KING	MISDEMEANOR	INCOMPLETE	11/20/2015	3	3	.	10
WSH	3219	JAIL	KING	MISDEMEANOR	INCOMPLETE	11/20/2015	0	0	.	10
WSH	3220	JAIL	KING	MISDEMEANOR	INCOMPLETE	11/20/2015	0	0	.	10
WSH	3221	JAIL	KING	MISDEMEANOR	FAXED	11/23/2015	1	1	7	.
WSH	3222	JAIL	CLARK	FELONY	INCOMPLETE	11/23/2015	1	1	.	7

WSH	3223	JAIL	GRAYS HARBOR	MISDEMEANOR	INCOMPLETE	11/23/2015	0	0	.	7
WSH	3224	JAIL	KING	FELONY	INCOMPLETE	11/23/2015	1	1	.	7
WSH	3225	JAIL	KING	FELONY	INCOMPLETE	11/23/2015	0	0	.	7
WSH	3226	JAIL	KING	MISDEMEANOR	INCOMPLETE	11/23/2015	0	0	.	7
WSH	3227	JAIL	KING	MISDEMEANOR	INCOMPLETE	11/23/2015	0	0	.	7
WSH	3228	JAIL	KING	MISDEMEANOR	INCOMPLETE	11/23/2015	0	0	.	7
WSH	3229	JAIL	KING	MISDEMEANOR	INCOMPLETE	11/23/2015	0	0	.	7
WSH	3230	JAIL	LEWIS	FELONY	INCOMPLETE	11/23/2015	0	0	.	7
WSH	3231	JAIL	PIERCE	MISDEMEANOR	WITHDRAWN	11/23/2015	0	0	2	.
WSH	3232	JAIL	KING	FELONY	INCOMPLETE	11/24/2015	0	0	.	6
WSH	3233	JAIL	KING	MISDEMEANOR	INCOMPLETE	11/24/2015	0	0	.	6
WSH	3234	JAIL	KING	MISDEMEANOR	INCOMPLETE	11/24/2015	0	0	.	6
WSH	3235	JAIL	PIERCE	MISDEMEANOR	INCOMPLETE	11/24/2015	0	0	.	6
WSH	3236	JAIL	KING	MISDEMEANOR	INCOMPLETE	11/25/2015	0	0	.	5
WSH	3237	JAIL	KITSAP	MISDEMEANOR	INCOMPLETE	11/25/2015	0	0	.	5
WSH	3238	JAIL	LEWIS	MISDEMEANOR	INCOMPLETE	11/25/2015	0	0	.	5
WSH	3239	JAIL	KING	FELONY	INCOMPLETE	11/27/2015	0	0	.	3
ESH	1779	JAIL	BENTON	FELONY	FAX	7/2/2015	4	7	62	0
ESH	1789	JAIL	BENTON	MISDEMEANOR	FAX	7/8/2015	1	5	71	.
ESH	1796	JAIL	BENTON	FELONY	FAX	7/13/2015	3	4	66	.
ESH	1797	JAIL	OKANOGAN	FELONY	FAX	7/13/2015	0	2	51	.
ESH	1945	JAIL	SPOKANE	MISDEMEANOR	FAX	7/16/2015	1	19	55	.
ESH	1955	JAIL	YAKIMA	FELONY	FAX	7/28/2015	1	7	64	.
ESH	1958	JAIL	SPOKANE	FELONY	FAX	7/29/2015	0	6	58	.
ESH	1959	JAIL	BENTON	FELONY	FAX	7/30/2015	1	5	55	.
ESH	2208	JAIL	CHELAN	FELONY	FAX	8/6/2015	0	6	50	.
ESH	2216	JAIL	SPOKANE	FELONY	FAX	8/14/2015	0	3	.	108
ESH	2218	JAIL	GRANT	FELONY	FAX	8/17/2015	1	1	81	.
ESH	2222	JAIL	YAKIMA	FELONY	FAX	8/18/2015	0	1	37	.
ESH	2227	JAIL	GRANT	FELONY	FAX	8/24/2015	2	4	71	.

ESH	2228	JAIL	FRANKLIN	FELONY	FAX	8/25/2015	2	3	77	.	
ESH	2534	INPATIENT	SPOKANE	FELONY	ADMISSION	9/2/2015	21	26	.		89
ESH	2540	JAIL	SPOKANE	FELONY	FAX	9/4/2015	5	10	60	.	
ESH	2545	JAIL	CHELAN	FELONY	FAX	9/10/2015	1	5	54	.	
ESH	2552	JAIL	BENTON	FELONY	FAX	9/15/2015	0	0	6	.	
ESH	2553	JAIL	SPOKANE	MISDEMEANOR	FAX	9/16/2015	0	2	51	.	
ESH	2554	JAIL	FRANKLIN	MISDEMEANOR	FAX	9/16/2015	0	2	51	.	
ESH	2556	JAIL	FRANKLIN	MISDEMEANOR	FAX	9/17/2015	0	4	63	.	
ESH	2558	JAIL	SPOKANE	FELONY	FAX	9/17/2015	5	6	47	.	
ESH	2561	INPATIENT	ADAMS	FELONY	ADMISSION	9/18/2015	3	4	.		73
ESH	2564	JAIL	SPOKANE	FELONY	FAX	9/21/2015	1	2	52	.	
ESH	2565	JAIL	SPOKANE	FELONY	FAX	9/21/2015	1	2	46	.	
ESH	2566	JAIL	OKANOGAN	FELONY	FAX	9/21/2015	7	7	.		40
ESH	2568	JAIL	SPOKANE	FELONY	FAX	9/22/2015	1	2	51	.	
ESH	2569	JAIL	STEVENS	FELONY	FAX	9/22/2015	1	1	52	.	
ESH	2572	JAIL	BENTON	FELONY	FAX	9/23/2015	0	0	27	.	
ESH	2574	JAIL	CHELAN	FELONY	FAX	9/23/2015	0	1	51	.	
ESH	2575	JAIL	OKANOGAN	FELONY	FAX	9/23/2015	0	6	57	.	
ESH	2576	JAIL	BENTON	FELONY	FAX	9/24/2015	1	4	33	.	
ESH	2579	JAIL	YAKIMA	FELONY	FAX	9/25/2015	0	4	17	.	
ESH	2581	JAIL	GRANT	FELONY	FAX	9/28/2015	1	4	46	.	
ESH	2582	JAIL	GRANT	FELONY	FAX	9/29/2015	0	1	44	.	
ESH	2583	JAIL	BENTON	FELONY	FAX	9/30/2015	0	0	37	.	
ESH	2585	JAIL	SPOKANE	FELONY	FAX	9/30/2015	0	2	8	.	
ESH	2895	JAIL	SPOKANE	FELONY	FAX	9/16/2015	19	21	49	.	
ESH	2898	JAIL	SPOKANE	FELONY	FAX	9/22/2015	7	8	51	.	
ESH	2899	JAIL	SPOKANE	FELONY	FAX	9/30/2015	1	2	48	.	
ESH	2900	INPATIENT	PEND OREILLE	FELONY	ADMISSION	10/1/2015	1	29	.		60
ESH	2901	JAIL	SPOKANE	FELONY	FAX	10/6/2015	0	1	29	.	
ESH	2902	INPATIENT	YAKIMA	FELONY	ADMISSION	10/7/2015	1	8	.		54

ESH	2905	JAIL	CHELAN	FELONY	FAX	10/12/2015	1	7	42	.	
ESH	2906	JAIL	CHELAN	MISDEMEANOR	FAX	10/12/2015	1	3	38	.	
ESH	2912	JAIL	SPOKANE	FELONY	FAX	10/14/2015	1	1	30	.	
ESH	2915	INPATIENT	ASOTIN	FELONY	ADMISSION	10/20/2015	0	8	.		41
ESH	2916	JAIL	FRANKLIN	MISDEMEANOR	FAX	10/20/2015	0	8	36	.	
ESH	2917	JAIL	OKANOGAN	FELONY	FAX	10/20/2015	0	14	.		41
ESH	2922	INPATIENT	FRANKLIN	MISDEMEANOR	ADMISSION	10/21/2015	0	7	.		40
ESH	2926	JAIL	OKANOGAN	FELONY	FAX	10/22/2015	0	6	.		39
ESH	2928	INPATIENT	SPOKANE	MISDEMEANOR	ADMISSION	10/28/2015	0	0	.		33
ESH	2929	JAIL	BENTON	MISDEMEANOR	FAX	10/28/2015	0	6	.		33
ESH	2931	JAIL	FRANKLIN	MISDEMEANOR	FAX	10/28/2015	0	6	.		33
ESH	2932	JAIL	OKANOGAN	FELONY	FAX	10/28/2015	0	6	.		33
ESH	2933	JAIL	YAKIMA	MISDEMEANOR	FAX	10/28/2015	0	6	15	.	
ESH	2934	JAIL	CHELAN	FELONY	FAX	10/29/2015	1	6	.		32
ESH	2935	JAIL	OKANOGAN	MISDEMEANOR	FAX	10/30/2015	0	4	.		31
ESH	3053	INPATIENT	FRANKLIN	FELONY	ADMISSION	10/20/2015	0	8	.		41
ESH	3054	JAIL	SPOKANE	FELONY	FAX	10/23/2015	14	14	20	.	
ESH	3242	INPATIENT	CHELAN	MISDEMEANOR	ADMISSION	10/15/2015	31	31	.		46
ESH	3243	INPATIENT	FRANKLIN	FELONY	ADMISSION	10/20/2015	0	8	.		41
ESH	3244	JAIL	SPOKANE	FELONY	FAX	10/23/2015	14	14	20	.	
ESH	3245	JAIL	CHELAN	MISDEMEANOR	FAX	11/3/2015	22	22	29	.	
ESH	3246	JAIL	GRANT	FELONY	FAX	11/3/2015	0	9	.		27
ESH	3247	JAIL	SPOKANE	FELONY	FAX	11/3/2015	1	16	14	.	
ESH	3248	JAIL	BENTON	MISDEMEANOR	FAX	11/4/2015	0	2	.		26
ESH	3249	JAIL	OKANOGAN	MISDEMEANOR	FAX	11/4/2015	0	0	.		26
ESH	3250	JAIL	SPOKANE	FELONY	FAX	11/4/2015	5	9	.		26
ESH	3251	JAIL	STEVENS	FELONY	FAX	11/4/2015	0	8	.		26
ESH	3252	JAIL	SPOKANE	MISDEMEANOR	FAX	11/5/2015	0	7	.		25
ESH	3253	JAIL	YAKIMA	MISDEMEANOR	FAX	11/5/2015	4	8	.		25
ESH	3254	JAIL	GRANT	FELONY	FAX	11/9/2015	0	4	.		21

ESH	3255	JAIL	YAKIMA	FELONY	FAX	11/9/2015	0	4	.	21
ESH	3256	JAIL	YAKIMA	MISDEMEANOR	FAX	11/10/2015	0	3	.	20
ESH	3257	INPATIENT	YAKIMA	FELONY	ADMISSION	11/12/2015	4	8	.	18
ESH	3258	JAIL	SPOKANE	FELONY	FAX	11/12/2015	5	11	.	18
ESH	3259	JAIL	SPOKANE	MISDEMEANOR	FAX	11/12/2015	1	4	.	18
ESH	3260	JAIL	FRANKLIN	MISDEMEANOR	FAX	11/16/2015	1	8	.	14
ESH	3261	JAIL	YAKIMA	MISDEMEANOR	FAX	11/16/2015	0	7	.	14
ESH	3262	JAIL	CHELAN	MISDEMEANOR	FAX	11/17/2015	1	6	.	13
ESH	3263	JAIL	YAKIMA	MISDEMEANOR	FAX	11/17/2015	2	2	.	13
ESH	3264	JAIL	CHELAN	MISDEMEANOR	FAX	11/18/2015	2	2	.	12
ESH	3265	JAIL	YAKIMA	MISDEMEANOR	FAX	11/18/2015	0	0	.	12
ESH	3266	JAIL	BENTON	FELONY	FAX	11/19/2015	1	5	.	11
ESH	3267	JAIL	SPOKANE	FELONY	FAX	11/19/2015	0	5	.	11
ESH	3268	JAIL	SPOKANE	MISDEMEANOR	FAX	11/23/2015	0	1	.	7
ESH	3269	JAIL	YAKIMA	MISDEMEANOR	FAX	11/23/2015	0	1	.	7
ESH	3270	JAIL	CHELAN	MISDEMEANOR	FAX	11/24/2015	0	0	.	6
ESH	3271	JAIL	STEVENS	FELONY	FAX	11/24/2015	1	7	.	6
ESH	3272	JAIL	YAKIMA	MISDEMEANOR	FAX	11/24/2015	0	1	.	6
ESH	3273	JAIL	BENTON	FELONY	FAX	11/25/2015	0	7	.	5
ESH	3274	JAIL	SPOKANE	MISDEMEANOR	FAX	11/25/2015	0	6	.	5
ESH	3341	INPATIENT	FRANKLIN	FELONY	ADMISSION	8/10/2015	0	7	86	.
ESH	3342	INPATIENT	YAKIMA	MISDEMEANOR	ADMISSION	11/30/2015	0	7	.	0

Appendix D: Class Member--Restoration Information for November 2015

Hospital	Class Member	County	Offense	Completion Method or Incomplete	Order Signed Date	Number of days from signed order to:			
						Order Received	Discovery Received	Complete	Incomplete: End of Reporting Period
WSH	2288	WHATCOM	FELONY CLASS C	INCOMPLETE	8/21/2015	3	3	0	101
WSH	2603	KING	FELONY CLASS A	BED OFFERED	9/9/2015	1	1	55	.
WSH	2612	MASON	FELONY CLASS C	BED OFFERED	9/14/2015	2	2	49	.
WSH	2616	KITSAP	FELONY CLASS C	BED OFFERED	9/16/2015	0	0	49	.
WSH	2617	PIERCE	FELONY CLASS B	BED OFFERED	9/16/2015	1	1	51	.
WSH	2621	LEWIS	FELONY CLASS C	BED OFFERED	9/17/2015	1	1	53	.
WSH	2623	SNOHOMISH	FELONY CLASS C	BED OFFERED	9/17/2015	0	0	50	.
WSH	2625	PACIFIC	FELONY CLASS C	BED OFFERED	9/18/2015	4	4	49	.
WSH	2627	KING	FELONY CLASS C	BED OFFERED	9/21/2015	0	0	53	.
WSH	2630	THURSTON	FELONY CLASS B	BED OFFERED	9/21/2015	1	1	65	.
WSH	2631	CLARK	FELONY CLASS B	INCOMPLETE	9/22/2015	1	1	.	69
WSH	2635	KING	MISDEMEANOR	INCOMPLETE	9/22/2015	0	0	.	69
WSH	2639	KING	FELONY CLASS B	BED OFFERED	9/23/2015	1	1	47	.
WSH	2640	KING	FELONY CLASS C	CANCELLED	9/23/2015	1	1	62	.
WSH	2643	GRAYS HARBOR	FELONY CLASS C	BED OFFERED	9/24/2015	1	1	50	.
WSH	2645	PACIFIC	FELONY CLASS C	BED OFFERED	9/25/2015	3	3	66	.
WSH	2646	PIERCE	FELONY CLASS B	BED OFFERED	9/25/2015	3	3	67	.
WSH	2648	GRAYS HARBOR	FELONY CLASS C	BED OFFERED	9/28/2015	1	1	53	.
WSH	2942	SNOHOMISH	MISDEMEANOR	INCOMPLETE	9/21/2015	24	24	.	70
WSH	2943	CLARK	FELONY CLASS C	BED OFFERED	9/23/2015	2	2	47	.
WSH	2944	PIERCE	FELONY CLASS C	BED OFFERED	9/23/2015	2	2	58	.
WSH	2946	PIERCE	FELONY CLASS B	BED OFFERED	9/24/2015	1	1	61	.
WSH	2947	PIERCE	FELONY CLASS A	BED OFFERED	9/25/2015	0	14	67	.
WSH	2948	ISLAND	FELONY CLASS C	BED OFFERED	9/28/2015	1	1	52	.

WSH	2949	KING	FELONY CLASS C	BED OFFERED	9/28/2015	0	0	57	.
WSH	2954	PIERCE	FELONY CLASS C	BED OFFERED	9/30/2015	1	1	55	.
WSH	2955	PIERCE	FELONY CLASS C	BED OFFERED	9/30/2015	1	1	55	.
WSH	2956	KING	FELONY CLASS B	INCOMPLETE	10/1/2015	0	0	.	60
WSH	2957	KING	FELONY CLASS B	INCOMPLETE	10/2/2015	0	0	.	59
WSH	2958	MASON	FELONY CLASS B	INCOMPLETE	10/2/2015	3	3	.	59
WSH	2959	PIERCE	FELONY CLASS A	INCOMPLETE	10/2/2015	3	3	.	59
WSH	2960	PIERCE	FELONY CLASS B	INCOMPLETE	10/2/2015	3	3	.	59
WSH	2961	CLARK	FELONY CLASS A	INCOMPLETE	10/5/2015	2	2	.	56
WSH	2962	COWLITZ	FELONY CLASS A	INCOMPLETE	10/5/2015	1	1	.	56
WSH	2963	KING	FELONY CLASS C	BED OFFERED	10/5/2015	0	0	56	.
WSH	2964	THURSTON	FELONY CLASS B	BED OFFERED	10/5/2015	1	1	57	.
WSH	2966	CLARK	FELONY CLASS C	BED OFFERED	10/6/2015	1	1	55	.
WSH	2967	KING	FELONY CLASS B	INCOMPLETE	10/6/2015	1	1	.	55
WSH	2969	KING	FELONY CLASS B	INCOMPLETE	10/7/2015	1	1	.	54
WSH	2974	KING	FELONY CLASS B	INCOMPLETE	10/8/2015	1	1	.	53
WSH	2975	LEWIS	FELONY CLASS C	BED OFFERED	10/8/2015	0	0	54	.
WSH	2977	PIERCE	FELONY CLASS C	CANCELLED	10/8/2015	1	8	42	.
WSH	2980	GRAYS HARBOR	FELONY CLASS C	INCOMPLETE	10/12/2015	2	2	.	49
WSH	2982	KING	FELONY CLASS A	INCOMPLETE	10/13/2015	0	0	.	48
WSH	2983	KING	FELONY CLASS B	INCOMPLETE	10/13/2015	0	0	.	48
WSH	2984	MASON	FELONY CLASS C	INCOMPLETE	10/13/2015	17	17	.	48
WSH	2985	CLARK	FELONY CLASS B	INCOMPLETE	10/14/2015	1	1	.	47
WSH	2986	KING	FELONY CLASS A	INCOMPLETE	10/14/2015	0	0	.	47
WSH	2988	PIERCE	FELONY CLASS C	INCOMPLETE	10/19/2015	1	1	.	42
WSH	2990	KING	FELONY CLASS B	INCOMPLETE	10/20/2015	0	0	.	41
WSH	2991	PIERCE	FELONY CLASS B	INCOMPLETE	10/21/2015	2	2	.	40
WSH	2992	PIERCE	FELONY CLASS B	INCOMPLETE	10/21/2015	2	2	.	40
WSH	2993	PIERCE	FELONY CLASS B	INCOMPLETE	10/21/2015	2	2	.	40
WSH	2994	PIERCE	FELONY CLASS C	INCOMPLETE	10/21/2015	2	2	.	40

WSH	2995	PIERCE	FELONY CLASS C	INCOMPLETE	10/21/2015	2	2	.	40
WSH	3000	KING	MISDEMEANOR	INCOMPLETE	10/23/2015	0	0	.	38
WSH	3002	CLARK	MISDEMEANOR	BED OFFERED	10/26/2015	1	1	9	.
WSH	3003	KING	FELONY CLASS C	INCOMPLETE	10/26/2015	1	1	.	35
WSH	3004	THURSTON	FELONY CLASS B	INCOMPLETE	10/26/2015	1	1	.	35
WSH	3005	THURSTON	FELONY CLASS C	INCOMPLETE	10/26/2015	1	1	.	35
WSH	3006	THURSTON	MISDEMEANOR	BED OFFERED	10/26/2015	1	1	10	.
WSH	3007	KING	FELONY CLASS B	INCOMPLETE	10/27/2015	0	0	.	34
WSH	3008	KING	FELONY CLASS C	INCOMPLETE	10/27/2015	0	0	.	34
WSH	3010	KING	FELONY CLASS C	INCOMPLETE	10/28/2015	0	0	.	33
WSH	3011	PIERCE	FELONY CLASS B	INCOMPLETE	10/28/2015	0	0	.	33
WSH	3012	PIERCE	FELONY CLASS C	INCOMPLETE	10/28/2015	0	0	.	33
WSH	3013	LEWIS	FELONY CLASS C	INCOMPLETE	10/29/2015	1	1	.	32
WSH	3014	PIERCE	FELONY CLASS A	INCOMPLETE	10/29/2015	0	0	.	32
WSH	3015	SKAGIT	FELONY CLASS C	INCOMPLETE	10/29/2015	1	1	.	32
WSH	3016	SNOHOMISH	FELONY CLASS B	INCOMPLETE	10/29/2015	0	0	.	32
WSH	3056	PIERCE	FELONY CLASS C	BED OFFERED	9/16/2015	1	6	48	.
WSH	3057	PIERCE	FELONY CLASS C	BED OFFERED	9/23/2015	1	1	44	.
WSH	3065	WHATCOM	FELONY CLASS C	INCOMPLETE	10/19/2015	0	0	.	42
WSH	3067	CLARK	FELONY CLASS B	INCOMPLETE	10/27/2015	8	8	.	34
WSH	3068	PIERCE	FELONY CLASS C	BED OFFERED	10/28/2015	1	1	5	.
WSH	3069	THURSTON	MISDEMEANOR	BED OFFERED	10/30/2015	3	3	6	.
WSH	3275	PIERCE	FELONY CLASS C	BED OFFERED	9/16/2015	1	6	48	.
WSH	3276	PIERCE	FELONY CLASS C	BED OFFERED	9/23/2015	1	1	44	.
WSH	3277	PIERCE	FELONY CLASS C	BED OFFERED	9/28/2015	1	1	57	.
WSH	3278	WHATCOM	FELONY CLASS C	INCOMPLETE	10/19/2015	0	0	.	42
WSH	3279	CLARK	FELONY CLASS B	INCOMPLETE	10/27/2015	8	8	.	34
WSH	3280	PIERCE	FELONY CLASS C	BED OFFERED	10/28/2015	1	1	5	.
WSH	3281	THURSTON	MISDEMEANOR	BED OFFERED	10/30/2015	3	3	6	.
WSH	3282	KING	FELONY CLASS B	INCOMPLETE	11/2/2015	1	1	.	28

WSH	3283	KING	FELONY CLASS C	INCOMPLETE	11/2/2015	0	0	.	28
WSH	3284	KING	MISDEMEANOR	BED OFFERED	11/2/2015	1	1	14	.
WSH	3285	KITSAP	FELONY CLASS B	BED OFFERED	11/2/2015	0	0	3	.
WSH	3286	PIERCE	FELONY CLASS C	INCOMPLETE	11/2/2015	1	1	.	28
WSH	3287	KING	FELONY CLASS A	INCOMPLETE	11/4/2015	0	0	.	26
WSH	3288	KING	FELONY CLASS B	INCOMPLETE	11/4/2015	0	0	.	26
WSH	3289	KING	FELONY CLASS C	INCOMPLETE	11/4/2015	0	0	.	26
WSH	3290	KING	MISDEMEANOR	BED OFFERED	11/4/2015	1	1	14	.
WSH	3291	PIERCE	FELONY CLASS A	INCOMPLETE	11/4/2015	2	2	.	26
WSH	3292	PIERCE	FELONY CLASS B	INCOMPLETE	11/4/2015	1	1	.	26
WSH	3293	PIERCE	FELONY CLASS C	INCOMPLETE	11/4/2015	2	2	.	26
WSH	3294	PIERCE	FELONY CLASS C	BED OFFERED	11/4/2015	1	1	8	.
WSH	3295	THURSTON	FELONY CLASS B	INCOMPLETE	11/4/2015	0	0	.	26
WSH	3296	CLARK	FELONY CLASS C	INCOMPLETE	11/5/2015	0	0	.	25
WSH	3297	CLALLAM	FELONY CLASS C	INCOMPLETE	11/6/2015	0	0	.	24
WSH	3298	KING	MISDEMEANOR	BED OFFERED	11/6/2015	0	0	10	.
WSH	3299	KITSAP	MISDEMEANOR	BED OFFERED	11/6/2015	0	0	13	.
WSH	3300	ISLAND	FELONY CLASS B	BED OFFERED	11/9/2015	1	1	10	.
WSH	3301	KING	FELONY CLASS B	INCOMPLETE	11/9/2015	3	3	.	21
WSH	3302	PIERCE	FELONY CLASS C	INCOMPLETE	11/10/2015	2	2	.	20
WSH	3303	SNOHOMISH	FELONY CLASS C	BED OFFERED	11/10/2015	0	0	3	.
WSH	3304	CLARK	FELONY CLASS B	BED OFFERED	11/13/2015	0	0	0	.
WSH	3305	SKAGIT	FELONY CLASS C	INCOMPLETE	11/13/2015	0	0	.	17
WSH	3306	KING	MISDEMEANOR	BED OFFERED	11/16/2015	0	0	15	.
WSH	3307	PIERCE	FELONY CLASS C	INCOMPLETE	11/16/2015	1	1	.	14
WSH	3308	PIERCE	FELONY CLASS C	BED OFFERED	11/16/2015	0	0	0	.
WSH	3309	CLARK	FELONY CLASS C	INCOMPLETE	11/17/2015	0	0	.	13
WSH	3310	CLARK	FELONY CLASS C	INCOMPLETE	11/17/2015	1	1	.	13
WSH	3311	KING	FELONY CLASS B	INCOMPLETE	11/17/2015	0	0	.	13
WSH	3312	SNOHOMISH	FELONY CLASS C	INCOMPLETE	11/17/2015	0	0	.	13

WSH	3313	CLARK	FELONY CLASS C	INCOMPLETE	11/18/2015	1	1	.	12
WSH	3314	KING	MISDEMEANOR	BED OFFERED	11/18/2015	1	1	13	.
WSH	3315	SNOHOMISH	FELONY CLASS B	INCOMPLETE	11/18/2015	1	1	.	12
WSH	3316	KING	FELONY CLASS A	INCOMPLETE	11/19/2015	1	1	.	11
WSH	3317	KING	FELONY CLASS B	INCOMPLETE	11/19/2015	0	0	.	11
WSH	3318	SNOHOMISH	FELONY CLASS C	INCOMPLETE	11/19/2015	0	0	.	11
WSH	3319	PIERCE	FELONY CLASS B	INCOMPLETE	11/20/2015	0	0	.	10
WSH	3320	SNOHOMISH	FELONY CLASS B	BED OFFERED	11/20/2015	0	0	5	.
WSH	3321	GRAYS HARBOR	FELONY CLASS C	INCOMPLETE	11/23/2015	1	1	.	7
WSH	3322	PIERCE	FELONY CLASS A	INCOMPLETE	11/23/2015	0	0	.	7
WSH	3323	PIERCE	FELONY CLASS B	BED OFFERED	11/23/2015	0	0	0	.
WSH	3324	PIERCE	FELONY CLASS B	BED OFFERED	11/23/2015	0	0	7	.
ESH	1995	FRANKLIN	FELONY	ADMISSION	7/28/2015	3	8	97	.
ESH	2307	SPOKANE	FELONY	ADMISSION	7/21/2015	15	21	111	.
ESH	2309	WALLA WALLA	FELONY	ADMISSION	8/4/2015	1	7	93	.
ESH	2311	CHELAN	FELONY	ADMISSION	8/5/2015	1	6	91	.
ESH	2315	SPOKANE	FELONY	ADMISSION	8/24/2015	0	1	.	98
ESH	2334	SPOKANE	FELONY	ADMISSION	8/20/2015	5	5	.	102
ESH	2654	OKANOGAN	FELONY	ADMISSION	9/4/2015	0	4	.	87
ESH	2656	BENTON	FELONY	ADMISSION	9/8/2015	15	17	.	83
ESH	2657	WALLA WALLA	FELONY	ADMISSION	9/8/2015	3	7	.	83
ESH	2658	SPOKANE	FELONY	ADMISSION	9/11/2015	0	4	.	80
ESH	2661	SPOKANE	MISDEMEANOR	ADMISSION	9/16/2015	1	1	.	75
ESH	2662	BENTON	FELONY	ADMISSION	9/24/2015	1	1	.	67
ESH	2663	BENTON	MISDEMEANOR	ADMISSION	9/25/2015	0	3	.	66
ESH	2664	CHELAN	FELONY	ADMISSION	9/28/2015	0	1	.	63
ESH	2665	BENTON	FELONY	ADMISSION	9/29/2015	0	2	.	62
ESH	3020	BENTON	FELONY	ADMISSION	9/24/2015	0	1	.	67
ESH	3021	SPOKANE	FELONY	ADMISSION	10/8/2015	0	0	.	53
ESH	3022	SPOKANE	FELONY	ADMISSION	10/12/2015	9	9	.	49

ESH	3023	YAKIMA	FELONY	ADMISSION	10/14/2015	5	5	.	47
ESH	3024	YAKIMA	FELONY	ADMISSION	10/20/2015	3	3	.	41
ESH	3025	BENTON	FELONY	ADMISSION	10/21/2015	0	4	.	40
ESH	3025	BENTON	MISDEMEANOR	ADMISSION	10/21/2015	0	4	.	40
ESH	3026	BENTON	FELONY	ADMISSION	10/21/2015	0	4	.	40
ESH	3026	BENTON	MISDEMEANOR	ADMISSION	10/21/2015	0	4	.	40
ESH	3027	SPOKANE	FELONY	ADMISSION	10/28/2015	0		.	33
ESH	3326	YAKIMA	FELONY	ADMISSION	11/2/2015	2	2	.	28
ESH	3327	BENTON	FELONY	ADMISSION	11/5/2015	0	1	.	25
ESH	3328	SPOKANE	FELONY	ADMISSION	11/5/2015	0	0	.	25
ESH	3329	BENTON	FELONY	ADMISSION	11/12/2015	1	1	.	18
ESH	3330	GRANT	FELONY	ADMISSION	11/17/2015	0	0	.	13
ESH	3331	STEVENS	FELONY	ADMISSION	11/17/2015	0		.	13
ESH	3332	SPOKANE	FELONY	ADMISSION	11/20/2015	0		.	10
ESH	3333	BENTON	FELONY	ADMISSION	11/25/2015	0	0	.	5
ESH	3343	COLUMBIA	MISDEMEANOR	ADMISSION	8/11/2015	9	13	99	.
ESH	3344	YAKIMA	MISDEMEANOR	ADMISSION	8/25/2015	0	1	92	.
ESH	3345	YAKIMA	FELONY	ADMISSION	9/11/2015	2	2	75	.
ESH	3346	FRANKLIN	FELONY	ADMISSION	10/27/2015	42	42	.	34
ESH	3347	CHELAN	MISDEMEANOR	ADMISSION	11/23/2015	9	9	.	7