

***Cassie Cordell Trueblood, et al., v. Washington State Department  
of Social and Health Services, et al.***  
***Case No. C14-1178 MJP***  
**Monthly Report to the Court Appointed Monitor**

**January 15, 2016**

Behavioral Health and Service Integration Administration  
Division of State Hospitals  
PO Box 45050  
Olympia, WA 98504-5050  
(360) 725-2260  
Fax: (360) 407-0304



## TABLE OF CONTENTS

Background.....	Page 3
Class Member Status Information.....	Page 4
Class Member Status Data Tables.....	Page 6
Class Member Status Data Graphs.....	Page 9
Resources Required to Provide Timely Competency Services.....	Page 12
Key Accomplishments—December 2015.....	Page 17
<i>Trueblood</i> Implementation Steps Taken and Planned: December 2015.....	Page 18
Appendix A: Class Member—Evaluation Information for November 2015.....	Page 45
Appendix B: Class Member—Restoration Information for November 2015.....	Page 59
Appendix C: Class Member—Evaluation Information for December 2015.....	Page 66
Appendix D: Class Member—Restoration Information for December 2015.....	Page 80

## **Background**

On April 2, 2015, the Court ordered the Department of Social and Health Services (DSHS) to file monthly reports with the *Trueblood* Court Monitor on efforts to comply with Court orders to provide timely competency evaluation and restoration services to Class Members:

*“Defendants shall file a report with the Monitor on the fifth day of every month, which shall include:*

*(1) the number of days between when a court ordered provision of competency services and when provision was completed, for each person ordered to receive competency services during the previous month;*

*(2) data regarding the number of evaluators, bed capacity, physicians, and other resources needed to provide timely competency services;*

*(3) the steps taken in the previous month to implement this order;*

*(4) when and what results are intended to be realized by each of these steps;*

*(5) the results realized in the previous month;*

*(6) the steps planned to be taken in the following month;*

*(7) certification by Defendants that they are fully compliant with all deadlines that became due in the previous month;*

*(8) Defendants’ estimate for when the wait times will reach seven days or less, and all data relied on in making that estimate; and*

*(9) any other information the Monitor informs Defendants is necessary for the Monitor to fully review Defendants’ actions and advise the Court.”*

The following report is submitted this 15th day of January, 2015. Through submission of this report to *Trueblood* Court Appointed Monitor, Dr. Danna Mauch, the Department of Social and Health Services certifies compliance with all deadlines due for the month of December 2015 in accordance with this court order.

## **Class Member Status Information**

This report provides the class member data for Competency Services displayed in two periods—November 1, 2015-November 30, 2015 and December 1, 2015-December 31, 2015. The November data is considered “mature” and the December data is a first look data set. April 2015 is the baseline month for data analysis. As in previous reports, all data is reviewed using medians; however, as requested the information is also provided using averages.

The data is organized first into tables and graphs that show the trends forming over time. This month we have included the December data in the graphs and tables but note that it is “early look” data and will be updated with more complete data next month.

Specific class member information is included in the following appendices to this report:

- Appendix A: Class Member—Evaluation Information for November 2015
- Appendix B: Class Member—Restoration Information for November 2015
- Appendix C: Class Member—Evaluation Information for December 2015
- Appendix D: Class Member—Restoration Information for December 2015

## **Analysis of Data: April 1, 2015 through November 30, 2015**

- Orders received for jail-based evaluations in November were at a low over the tracked period, and about 38 less than the average of 234.25 monthly orders over the period. Inpatient evaluation orders were about one under the monthly average of 18.4 monthly orders, and restoration orders were about seven under the monthly average of 73.6 monthly orders.
- The median and average times for completing Jail-based evaluations continued to show minor improvements at WSH, along with a significant increase in the number of evaluations completed in 7 days for the month of November.
- Wait times for jail-based evaluations increased at ESH in November before decreasing again in December. A review of the data suggests this rise in wait times resulted from an unusually high number of orders in September without a corresponding increase in evaluator productivity for the month of November; of jail-based evaluations completed in November, seventeen of thirty were for orders signed in September. An apparent improvement in this metric in December’s “early look” data appears to result from the first significant increase in evaluator productivity for ESH as a result of newly hired evaluators, whereby the number of completed referrals shows an increase from 30 in November to 59 for December based on early data.
- Wait times for inpatient services show some fluctuation in November and early December data but no significant break from previous trends of increasing wait times absent the addition of new restoration beds. The addition of 15 beds at ESH in December is expected to begin to have an impact on wait times in January.

## **Outlier cases in which defendants waited more than 100 days**

We continue to look into outlier cases in which defendants waited more than 100 days, either to be provided an evaluation in jail, or to be admitted for restoration or for an in-patient

evaluation. In December, evaluation referrals for class members 2328, 2531 and 2534 at ESH were completed in 105, 113 and 117 days respectively. Class member 2328 was initially an inpatient referral that was completed in jail. Class member 2531 was delayed in part due to attorney availability and rescheduling. Class member 2534 was an inpatient referral delayed due to bed availability. Restoration referrals at ESH for class members 2335, 2654, 2656, 3758, 3759, and 3760 were completed in 103, 103, 100, 113, 109 and 100 days, respectively. These delays were due primarily to bed availability. Restoration referral for class member 2288 at WSH was reported as completed in 116 days, but on review we found that this individual was released on personal recognizance (PR) at the time of the order for restoration; only when he was later brought into jail did he become a class member. Ordinarily, WSH staff receive a new order when an individual is rearrested after release on PR, and we can measure our timeliness in responding to this latter order for compliance with *Trueblood*. For class member 2288, we did not receive a new order and therefore our records do not show the portion of the 116 days that the individual spent in jail or on personal recognizance.

For November data, ESH showed restoration referral for class member 2307 to have been completed at 111 days; this delay was addressed in last month's report. Restoration referral 3406 showed as incomplete at 102 days, but represents the same referral that was renumbered as class member 3758 noted above (completed at 113 days). Evaluation referral for class member 3377 shows as incomplete at 103 days but our review indicated that the individual was released on Oct. 2. The corrections noted here will be revised in next month's report.

**Class Member Status Data Tables (December data is “First Look” and subject to change)**

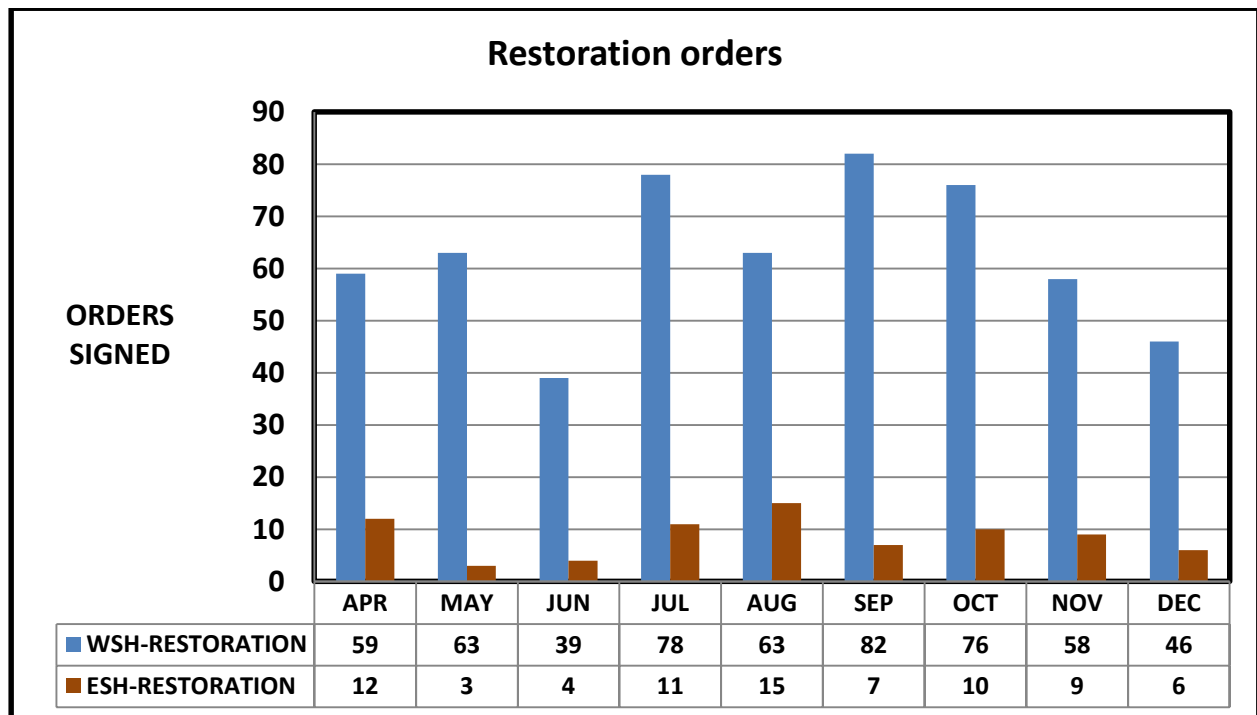
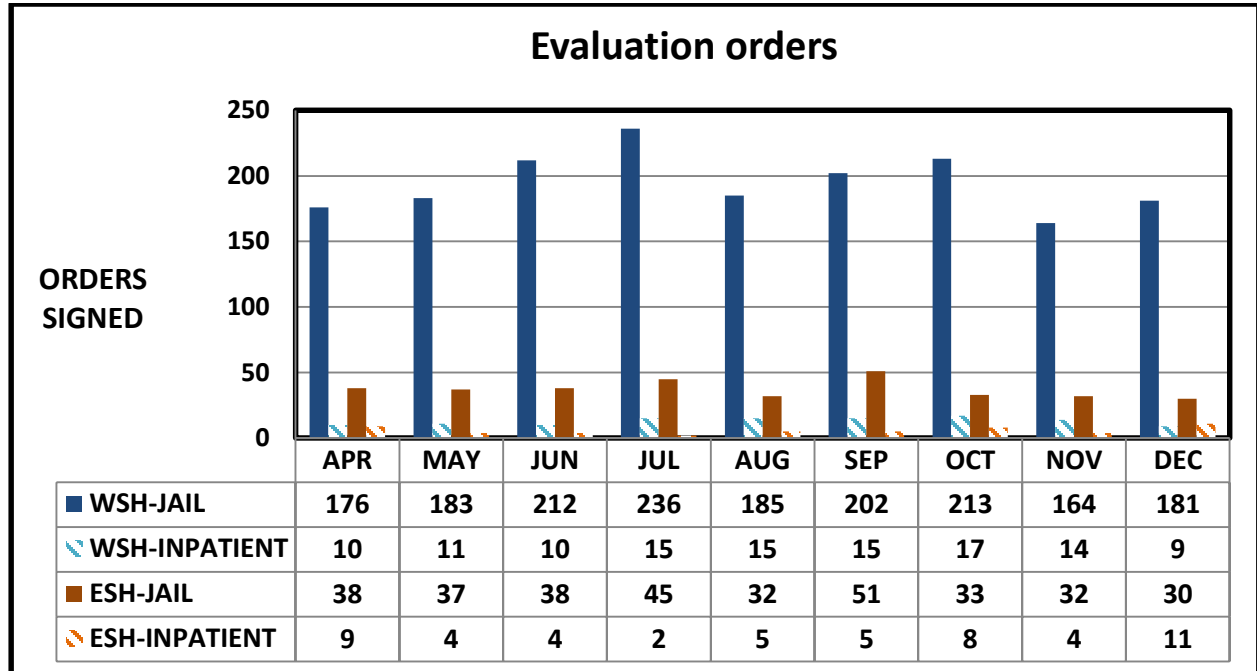
WESTERN STATE HOSPITAL		Court Orders Signed	Days from order signature to:								Percent complete within 7 days of order
			hospital receipt of order		hospital receipt of discovery		end of reporting month for incomplete referrals		completion		
			Average	Median	Average	Median	Average	Median	Average	Median	
Jail-based Evaluation	APR.	176	1.3	0.0	1.9	1.0	9.5	6.0	14.6	14.0	14%
	MAY	183	1.3	0.0	1.6	0.0	11.4	9.0	13.0	11.0	16%
	JUN.	212	1.7	0.0	2.1	1.0	10.9	8.0	17.8	15.0	10%
	JUL.	236	1.4	0.0	1.8	0.0	12.3	9.0	18.4	17.0	6%
	AUG.	185	1.9	0.0	2.2	0.0	13.4	11.0	20.7	20.0	7%
	SEP.	202	1.6	0.0	1.7	0.0	11.7	8.0	17.6	16.0	10%
	OCT.	213	1.9	0.0	2.0	0.0	16.7	15.0	16.4	15.0	19%
	NOV.	164	1.8	0.0	1.9	0.0	18.0	13.0	16.0	14.0	28%
	DEC.	181	1.0	0.0	1.1	0.0	14.3	10.0	15.5	14.0	14%
Inpatient Evaluation	APR.	10	5.8	1.0	5.8	1.0	10.7	7.0	22.2	18.0	22%
	MAY	11	2.9	2.0	2.9	2.0	11.4	13.0	18.9	20.0	8%
	JUN.	10	3.0	1.0	3.0	1.0	14.0	12.0	12.3	15.0	25%
	JUL.	15	3.5	1.0	3.5	1.0	16.6	9.0	14.8	15.0	20%
	AUG.	15	4.5	1.0	4.5	1.0	10.0	11.0	25.5	17.0	7%
	SEP.	15	2.6	1.0	2.6	1.0	15.1	16.0	19.7	20.0	11%
	OCT.	17	1.5	1.0	1.5	1.0	19.0	19.0	23.6	22.0	0%
	NOV.	14	1.7	1.0	1.7	1.0	14.1	12.0	23.9	22.0	6%
	DEC.	9	2.1	1.0	2.1	1.0	13.4	10.0	22.0	26.0	13%
Inpatient Restoration	APR.	59	1.8	1.0	1.8	1.0	37.2	16.0	38.6	44.0	24%
	MAY	63	1.8	1.0	2.1	1.0	35.9	19.0	26.2	15.0	25%
	JUN.	39	1.7	1.0	2.1	1.0	16.8	8.0	34.2	25.0	7%
	JUL.	78	1.7	1.0	2.1	1.0	16.1	10.0	20.8	15.0	25%
	AUG.	63	2.1	1.0	2.1	1.0	22.5	19.0	23.6	33.0	24%
	SEP.	82	1.7	1.0	2.0	1.0	24.3	15.0	23.0	14.0	26%
	OCT.	76	1.8	1.0	2.1	1.0	21.2	23.0	32.1	45.0	20%
	NOV.	58	1.2	1.0	1.4	1.0	31.9	28.0	33.5	47.0	24%
	DEC.	46	1.6	1.0	2.1	1.0	34.7	31.0	39.5	49.0	18%

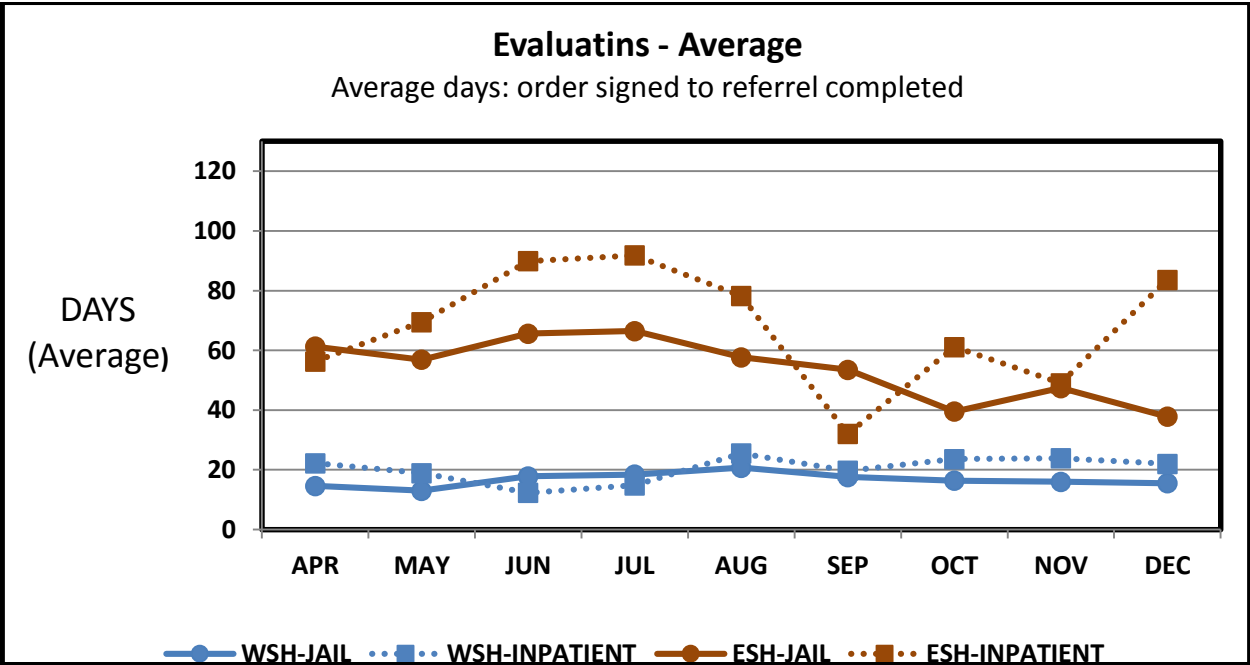
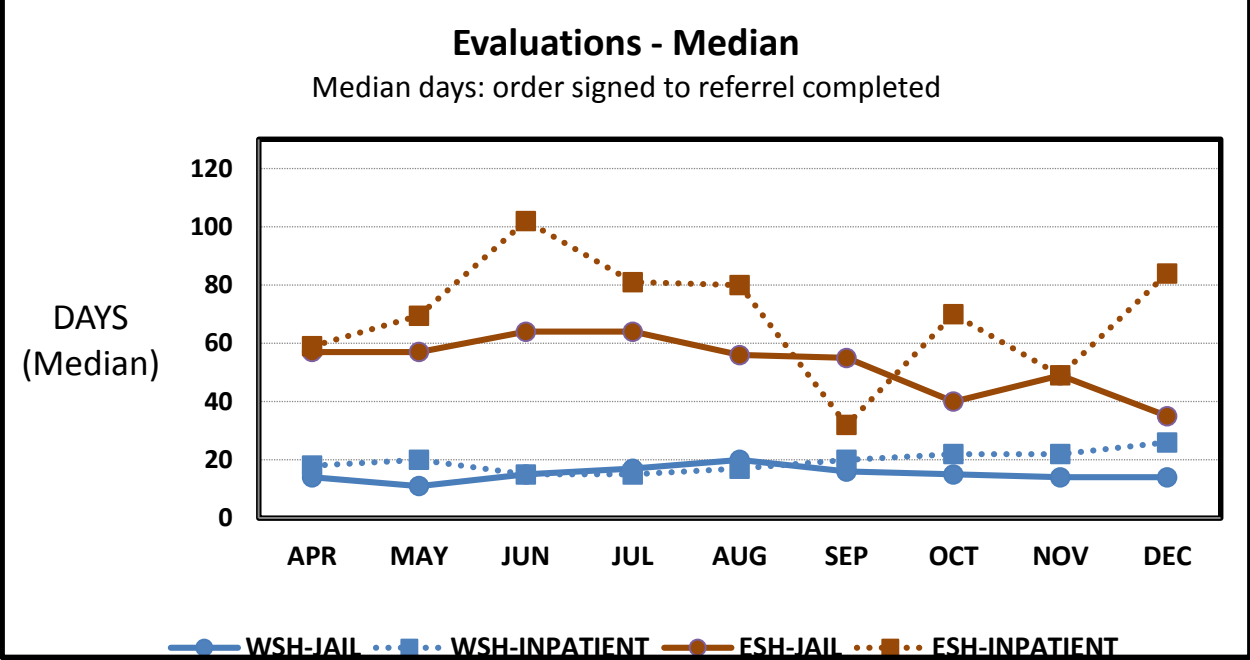
EASTERN STATE HOSPITAL		Court Orders Signed	Days from order signature to:								Percent complete within 7 days of order
			hospital receipt of order		hospital receipt of discovery		end of month for incomplete referrals		completion		
			Average	Median	Average	Median	Average	Median	Average	Median	
Jail-based Evaluation	APR.	38	4.6	1.0	8.6	5.0	28.1	28.0	61.3	57.0	0%
	MAY	37	4.3	1.0	8.8	6.0	37.0	33.0	56.9	57.0	0%
	JUN.	38	4.1	1.0	8.3	6.0	38.0	39.0	65.6	64.0	0%
	JUL.	45	4.2	1.0	8.9	6.0	32.6	30.0	66.5	64.0	0%
	AUG.	32	2.4	1.0	6.4	5.0	33.4	32.0	57.7	56.0	3%
	SEP.	51	2.3	1.0	4.9	4.0	29.1	14.0	53.5	55.0	3%
	OCT.	33	1.9	0.0	4.9	4.0	16.4	10.0	39.5	40.0	3%
	NOV.	32	1.8	0.0	5.9	5.0	28.3	26.0	47.4	49.0	0%
	DEC.	30	2.3	0.0	4.0	1.0	20.1	16.0	37.8	35.0	2%
Inpatient Evaluation	APR.	9	8.9	1.0	13.9	5.0	47.9	43.0	56.3	59.0	0%
	MAY	4	10.1	1.0	14.2	5.0	65.8	61.0	69.5	69.5	0%
	JUN.	4	7.7	1.0	11.1	5.0	75.2	68.0	89.9	102.0	0%
	JUL.	2	7.5	1.0	11.4	5.0	50.9	14.0	91.8	81.0	0%
	AUG.	5	10.2	1.0	19.6	5.0	44.5	31.0	78.2	80.0	0%
	SEP.	5	6.7	1.0	10.2	4.0	42.6	47.0	32.0	32.0	0%
	OCT.	8	2.0	1.0	7.9	6.0	28.9	16.0	61.1	70.0	0%
	NOV.	3	2.8	0.0	9.6	7.0	44.2	46.0	49.0	49.0	0%
	DEC.	11	2.3	1.0	5.7	2.0	23.6	20.0	83.6	84.0	0%
Inpatient Restoration	APR.	12	6.8	1.0	8.1	1.0	25.3	22.0	0.0	0.0	100%
	MAY	3	6.3	1.0	7.9	2.0	35.0	41.0	54.7	62.0	0%
	JUN.	4	0.6	1.0	1.8	1.0	45.3	39.0	46.0	56.0	20%
	JUL.	11	1.3	0.0	4.5	2.0	16.2	11.0	45.3	56.0	33%
	AUG.	15	1.6	0.0	5.7	3.0	26.4	27.0	35.5	35.5	50%
	SEP.	7	1.5	0.0	4.6	1.0	37.2	35.0	20.4	1.0	57%
	OCT.	10	3.2	0.0	6.4	4.0	45.6	37.0	87.4	93.0	0%
	NOV.	9	2.4	0.0	4.1	2.0	51.7	48.0	90.8	92.0	0%
	DEC.	6	3.5	0.0	4.3	1.0	36.8	38.0	84.7	84.0	0%

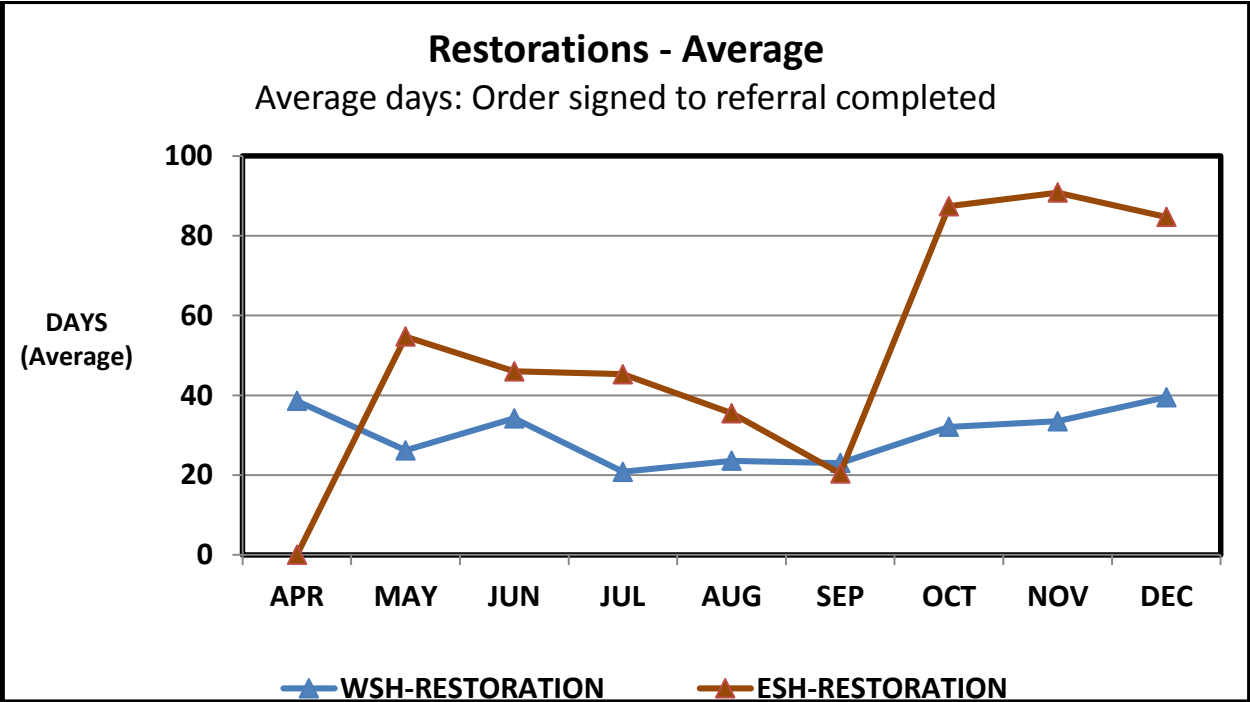
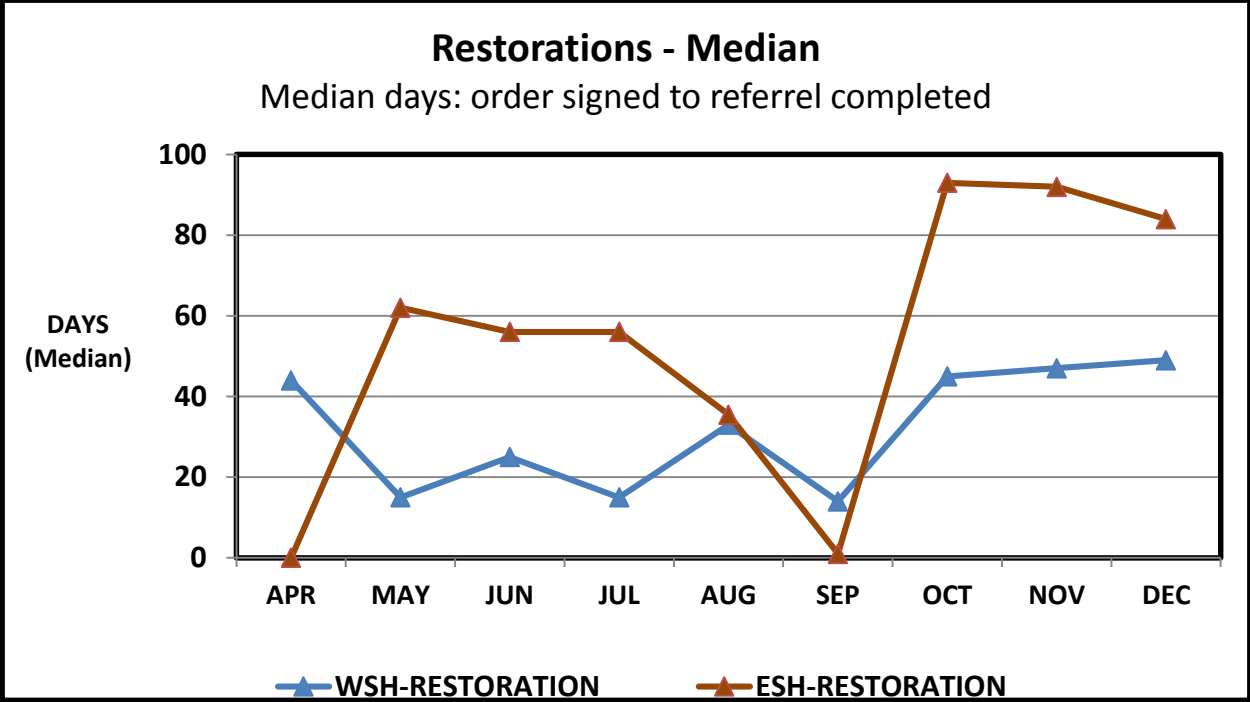
TOTALS BOTH HOSPITALS		Court Orders Signed	Days from order signature to:								Percent complete within 7 days of order
			hospital receipt of order		hospital receipt of discovery		end of month for incomplete referrals		completion		
			Average	Median	Average	Median	Average	Median	Average	Median	
Jail-based Evaluation	APR.	214	2.1	0.0	3.5	1.0	17.8	10.0	20.3	14.0	12%
	MAY	217	2.1	0.0	3.2	1.0	22.1	13.0	18.2	12.0	14%
	JUN.	250	2.3	1.0	3.6	1.0	20.8	13.0	24.1	17.0	9%
	JUL.	281	2.0	0.0	3.3	1.0	17.9	11.0	26.5	19.0	5%
	AUG.	217	2.0	0.0	3.0	1.0	19.7	13.0	25.4	21.0	6%
	SEP.	253	1.8	0.0	2.5	1.0	16.0	9.0	22.9	18.0	9%
	OCT.	246	1.9	0.0	2.5	1.0	16.6	11.0	19.2	16.0	17%
	NOV.	196	1.8	0.0	2.8	1.0	21.6	17.0	20.5	16.0	23%
	DEC.	211	1.3	0.0	1.7	0.0	16.1	10.0	20.0	15.0	11%
Inpatient Evaluation	APR.	19	7.8	1.0	11.0	3.0	39.9	33.0	45.1	48.5	9%
	MAY	15	7.3	1.0	9.7	3.0	55.3	47.0	50.9	25.0	5%
	JUN.	14	5.9	1.0	8.0	3.0	65.0	54.0	44.4	18.0	15%
	JUL.	17	5.7	1.0	7.8	3.0	49.9	15.0	14.8	15.0	20%
	AUG.	20	6.9	1.0	8.4	2.0	33.0	17.0	53.9	29.0	5%
	SEP.	20	4.3	1.0	5.7	1.0	39.4	22.0	20.4	20.0	10%
	OCT.	25	2.4	1.0	4.3	1.0	27.6	19.0	30.8	24.0	0%
	NOV.	17	2.0	1.0	3.9	1.0	30.8	18.0	26.4	22.0	5%
	DEC.	20	2.2	1.0	4.2	1.0	19.9	14.0	50.7	29.0	7%
Inpatient Restoration	APR.	71	1.5	0.0	2.2	1.0	35.3	16.0	37.6	43.0	26%
	MAY	66	1.5	0.0	1.9	0.0	35.8	20.0	27.8	18.0	24%
	JUN.	43	1.6	0.0	2.0	1.0	20.6	13.0	34.9	25.0	20%
	JUL.	89	1.4	0.0	1.9	0.0	16.1	10.0	24.5	20.0	26%
	AUG.	78	1.9	0.0	2.4	0.0	23.5	20.0	24.0	33.0	25%
	SEP.	89	1.6	0.0	2.1	0.0	27.6	21.0	22.7	13.0	29%
	OCT.	86	2.1	1.0	2.9	1.0	26.9	25.0	32.1	45.0	20%
	NOV.	67	1.5	1.0	2.0	1.0	37.2	34.0	42.1	49.0	21%
	DEC.	52	2.0	1.0	2.5	1.0	34.7	31.0	47.9	52.0	14%



Class Member Status Data Graphs - April through December (December data is "early look")







## **Resources Required to Provide Timely Competency Services**

### **Need Projections and Bed Capacity**

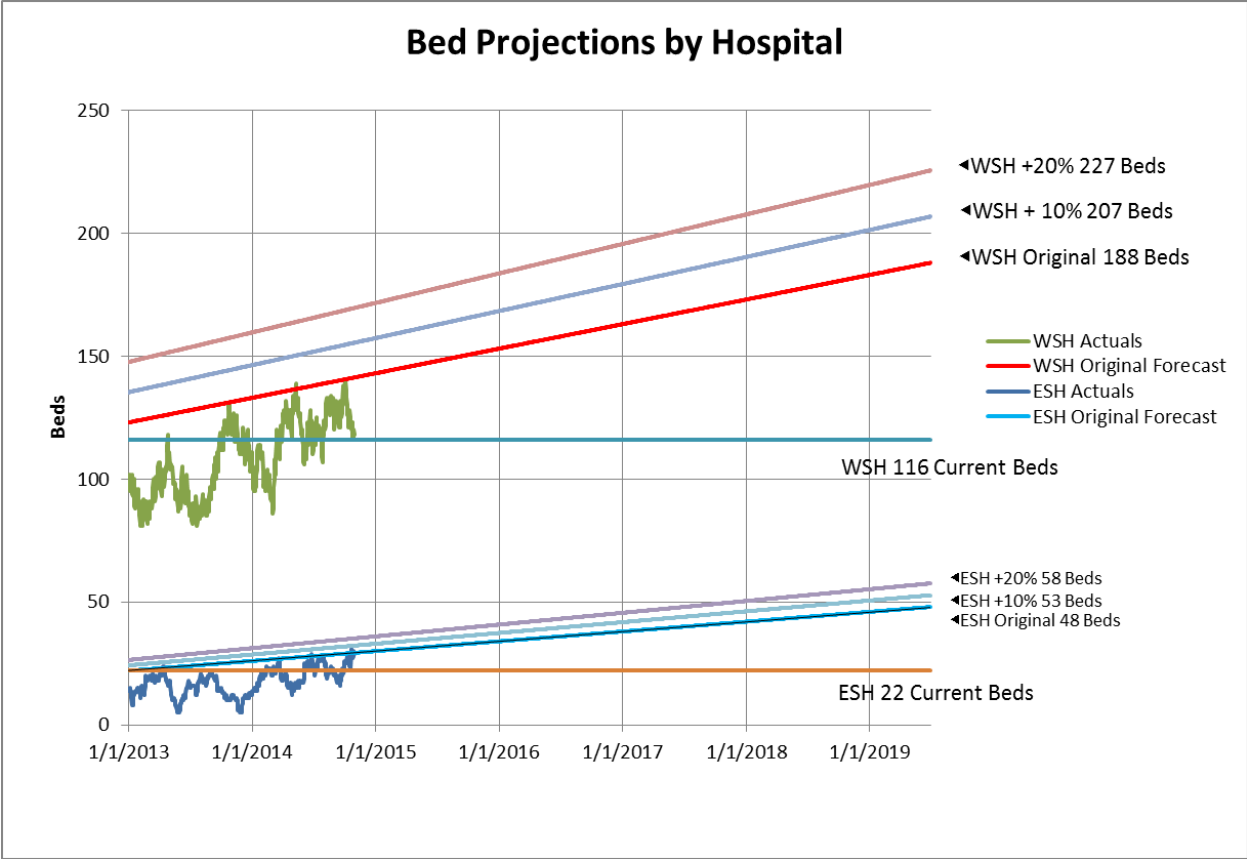
The investment made by the Legislature in the 15-17 biennial budget and the short and long-term strategies that are being undertaken will enable Washington to provide competency services within the seven-day time frames established by the Court. Washington is making every effort to provide competency services within the seven-day standard as soon as is possible.

For competency evaluation services, over the last month we have continued to measure the impact of newly hired evaluators. We reported out some initial results of this review last month. This month in early data, although the results are not yet fully reflected in the data tables, we are pleased to see the first substantial increase in evaluator productivity at ESH as a result of newly hired evaluators. Focusing on evaluations of *Trueblood* class members at ESH, the number of outpatient evaluations completed in December rose from 30 evaluations completed in November to 59 evaluations completed in December. We note that the December figure surpasses by 8 evaluations the highest number of referrals received in any month over the measured period. This increased capacity is resulting in an immediate backlog reduction that we expect to continue in the near term and result in an elimination of the backlog at ESH by March. Improvements in timelines at WSH have been more incremental with the addition of new evaluators, but are likewise expected to remove the evaluation backlog by March, 2016.

For competency restoration services, we continue to move forward with the plans outlined in last month's report and maintain our estimate of reaching compliance with the Court's order within two months of the opening of the newly contracted Maple Lane facility.

The anticipated compliance dates are based on the estimates and data, detailed below, that were included in the Long Term Plan dated July 2015 and subsequent monthly reports.

Fiscal and program staff from DSHS and the Washington State Office of Financial Management modeled additional bed capacity needed to meet a seven-day standard for admission with assumptions of increases in demand at ten percent and twenty percent. The following graph illustrates the model as applied to WSH and ESH.



For mentally ill defendants ordered to receive competency restoration treatment, additional inpatient forensic hospital bed capacity must be developed or made available. Based on projections in the chart above, it is estimated that compliance with a seven-day standard will require 90 beds during the 15-17 biennium.

## 2015-2017 Biennial Budget to Support Improvements to the Forensic Mental Health System

The two-year operating budget for the period of July 1, 2015 to June 30, 2017 (hereafter referred to as the 15-17 biennial budget), enacted by the Legislature on June 29, 2015 and signed by Governor Jay Inslee on June 30, 2015, includes an investment of \$40.5 million in new funding. Table One details the funding provided in the 15-17 biennial budget.

**Table One: New Forensic Mental Health System Funding in the 15-17 Biennial Budget**

Budget Item	FTE's	Dollars (Millions)
Competency Evaluation Staff	18.0	\$ 4.67
Competency Restoration Beds	129.2	\$26.86
Non-Felony Diversion	0.0	\$ 4.81
Office of Forensic Mental Health	11.0	\$ 4.18
<b>Total</b>	<b>158.2</b>	<b>\$40.52</b>

Table Two shows the increases for forensic evaluator and competency restoration bed capacity and Table Three details the specific new staff positions funded in the 15-17 biennial budget.

**Table Two: Increases in Forensic Evaluators & Competency Restoration Beds in 15-17 Biennial Budget**

Site	April 2015 Forensic Evaluator Positions (FTE)	15-17 Biennial Budget Increase (FTE)	Total Forensic Evaluator Capacity (FTE)	% Increase (FTE)	\$ Increase (Millions)	April 2015 Capacity (Beds)	15-17 Biennial Budget Increase (Beds)	Total Capacity (Beds)	% Increase (Beds)	\$ Increase (Millions)
ESH	6	5	11	83%	\$1.41	22	15	37	68%	\$13.41
WSH	24	8	32	30%	\$2.25	116	45	161	39%	\$4.47
TBD	N/A	N/A	N/A	N/A	N/A	0	30	30	N/A	\$8.97
<b>Total</b>	<b>30</b>	<b>13<sup>1</sup></b>	<b>43</b>	<b>40%</b>	<b>\$3.66</b>	<b>138</b>	<b>90</b>	<b>228</b>	<b>65%</b>	<b>\$26.86</b>

**Table Three: Specific new Staff Funded in the 15-17 Biennial Budget**

Position	Funded FTE	Description
Full Time Equivalents (FTE)	129.2	Direct care staff to operate 90 additional Competency Restoration treatment beds
Forensic Evaluators	13	Forensic Psychologists to conduct forensic evaluations
Forensic Evaluator Supervisor	2	Supervisory and leadership support for Forensic Evaluators
Forensic Evaluator Support	3	Staff to perform administrative and clerical tasks
Director of the Office of Forensic Mental Health	1	Lead Forensic Mental Health Services operations, as recommended in the forensic services consultant report
Data Manager	1	Develop standardized data reports to inform fiscal and program operations and improve data integrity as recommended by JLARC and Groundswell

<sup>1</sup> This figure does not include five Full Time Equivalents (FTE) for supervisory and administrative support that also are funded in the 15-17 biennial budget

Position	Funded FTE	Description
Data Analysts	2	<ul style="list-style-type: none"> <li>• Standardize systems to track and report program outcome data for competency and NGRI services</li> <li>• Build and maintain a statewide model for bed utilization and staffing needs</li> <li>• Create and maintain a centralized system for managing wait lists and admission decisions</li> <li>• Recommended by JLARC and Groundswell</li> </ul>
Technology Solutions Support	2	<ul style="list-style-type: none"> <li>• Build a technology solution to establish a common platform to transmit data between the State Hospitals and over 240 different jurisdictions to improve timeliness</li> <li>• Provide hands-on partner training across the system</li> <li>• 1 position funded only for the 15-17 biennium</li> </ul>
Competency Restoration Specialist	1	<ul style="list-style-type: none"> <li>• Develop alternative community-based competency restoration program options to address growing demand for forensic service</li> <li>• Coordinate development of criteria and a screening process to identify individuals appropriate to receive services in this setting</li> <li>• Quality assurance oversight of services provided in alternative settings</li> <li>• Recommended in Groundswell</li> </ul>
Workforce Development	2	<ul style="list-style-type: none"> <li>• Standardize and improve quality of competency services and NGRI treatment</li> <li>• Develop curriculum and provide training to the forensic psychology workforce across the state</li> <li>• Provide ongoing consultation and QA</li> <li>• Recommended in Groundswell</li> </ul>
Liaison and Diversion Specialist	1	<ul style="list-style-type: none"> <li>• Liaison with courts, jails, community mental health programs, RSNs, state hospitals and others to coordinate efforts to comply with <i>Trueblood</i> order</li> <li>• Create systems to ensure effective and efficient delivery of statewide forensic services</li> <li>• Coordinate stakeholder efforts to divert individuals with mental illness from criminal justice involvement</li> <li>• Coordinate community based treatment</li> <li>• Recommended by JLARC and the Groundswell</li> </ul>
Implementation Project Manager	1	<ul style="list-style-type: none"> <li>• Manage implementation to ensure requirements of the <i>Trueblood</i> decision are met in a timely manner</li> <li>• Project position for 15-17 biennium.</li> </ul>
Trueblood Report Manager	0	<ul style="list-style-type: none"> <li>• Report analysis, preparation and submittal</li> </ul>

		<ul style="list-style-type: none"><li>• Position not funded in the biennial budget, has been established and filled within existing funding to support <i>Trueblood</i> implementation</li><li>• Project position for the 15-17 biennium.</li></ul>
--	--	---



## **Trueblood Key Accomplishments--December 2015**

### **HIRING**

#### *Hospital Staff and Evaluators:*

- We continue to focus on hiring to expand both our evaluation and restoration capacity. Recruiting, hiring and retaining a sufficient number of qualified staff to fill psychiatrist, psychologist, registered nurse, and social worker positions needed to fill vacancies to safely operate new and existing wards at the state hospitals has been an ongoing challenge. In recent months one element of our response to this challenge has been to contract for additional capacity at residential treatment facilities in Centralia and Yakima. Pursuant to the Maple Lane contract in Centralia, we are moving forward aggressively to hire DSHS staff positions that are designated to support the operation of the facility, while the private contractors have taken responsibility for providing medical staff. We are currently seeking to acquire temporary assistance in developing the DSHS staff positions for Maple Lane to stay on schedule.
- Staffing Updates:
  - As of 12/31/15, 8 of the 9 new WSH evaluator positions are filled and licensed.
  - As of 12/31/15, 3 of the 4 new ESH evaluator positions have been filled.

#### *DSHS HQ:*

- Evaluator support positions: Three new forensic evaluation administrative support positions were funded by the legislature and these positions have been under development. Currently one evaluator support position has been created and filled at ESH, while another administrative position is being double-filled at WSH to provide additional capacity while the new positions are developed.

### **RECRUITMENT**

- Recruitment efforts described in last month's report were continued in December.

### **EXTRA DUTY PAY**

- Extra Duty pay memo distributed to evaluators December 4, 2015. Memo outlined eligibility and provisions.

### **STANDARDIZATION OF COURT ORDERS**

- The Administrative Office of the Courts released the revised and standardized RCW 10.77 and 71.05 forms related to competency evaluation and restoration.

### **REDUCING STATEWIDE EVALUATION WAIT TIMES**

- Pursuant to outstationing of forensic evaluators, the wait list at the SCORE facility in western Washington was reduced to 0 on December 24.

- Evaluations completed by ESH evaluators in December rose by nearly 100% from November and to a new high, exceeding the number of referrals in any month over the measured period. Evaluations completed at WSH also increased from November to December.

### RESIDENTIAL TREATMENT FACILITIES

- Yakima: DSHS has now completed negotiations and finalized a contract with Central Washington Comprehensive Mental Health, to open up 24 Competency Restoration beds at the currently vacant Yakima County Correctional Center, effective March 1, 2015.
- Maple Lane: DSHS contracted with Correct Care Recovery Solutions to work with DSHS staff to implement the restoration treatment program at Maple Lane. The Special Use permit was approved in late December. CCRS has already begun work to complete an application for both Dept. of Health Licensure and DSHS certification. Remodeling of the Cascade building at the facility is now underway.

### Trueblood Implementation Steps Taken and Planned—December 2015

Task	Key Milestones	Status / End Dates	Anticipated Outcome & Assumptions	Results Achieved & Barriers to Completion
<b>Court Appointed Monitor Coordination</b>				
Monthly Reports	Released Dec. report	Complete	<ul style="list-style-type: none"> <li>• Maintain compliance with the Court</li> <li>• Use data to review and improve the provision of forensic services</li> </ul>	<ul style="list-style-type: none"> <li>• Released November report to Stakeholders following review of Court Monitor</li> </ul>
	Submit Jan. Report	1/15/2016		
	Post-Submission Review	1/22/2016		
<b>Legislative Coordination</b>				
Implement Second Engrossed Second Substitute Senate Bill (2E2SSB) 5177	Develop implementation plan	TBD	<ul style="list-style-type: none"> <li>• Bill was enacted to provide remedies for improving the timeliness of forensic mental health services.</li> <li>• Implement and operationalize the changes brought about by the bill through engagement of partners</li> </ul>	<ul style="list-style-type: none"> <li>• On July 10, 2015, DSHS and Governor’s office hosted Planning Meeting to discuss SB 5177 implementation, the 2015-2017 budget, and cross-system collaboration for the State’s forensic mental health system. The governor’s office invited members of the Tribes, the Counties, Public Defenders, Prosecutors, the</li> </ul>
	Establish subgroups and an oversight committee as needed	TBD		

Task	Key Milestones	Status / End Dates	Anticipated Outcome & Assumptions	Results Achieved & Barriers to Completion
	Onboard Implementation Liaison position to facilitate cross system collaboration work	Complete	<ul style="list-style-type: none"> <li>Agency request legislation: receive Governor's approval and prepare drafts for introduction in the 2016 session.</li> </ul>	<p>Courts, the Administrative Office of the Courts, the Attorney General's Office, the State Legislature, Disability Rights Washington, NAMI Washington, and County Jails and Sheriffs. Workgroups reviewed specific goals and hurdles.</p> <ul style="list-style-type: none"> <li>Further discussions are planned to address a technical fix to SB 5177 relating to the authority of criminal courts to hold individuals after charges are dismissed and pending an evaluation for civil commitment under RCW 10.77.086(4).</li> </ul>
Provide regular implementation and progress updates to Legislative body and staff	Schedule twice monthly update conference call or in-person meeting	Ongoing	<ul style="list-style-type: none"> <li>Keep Legislators and staff up-to-date on status of Trueblood and SB5177 implementation</li> <li>Provide opportunity to address questions related to monthly reports or the long-term plan</li> </ul>	<ul style="list-style-type: none"> <li>Biweekly meetings are being held.</li> <li>Testified before House judiciary and Appropriations Committees on Trueblood and 5177 implementation status 11/19/2015</li> </ul>

Task	Key Milestones	Status / End Dates	Anticipated Outcome & Assumptions	Results Achieved & Barriers to Completion
<p>Consult with DOH about draft legislation requiring DOH certification of forensic evaluators to determine the need for a sunrise review</p>	<p>Consult DOH</p>	<p>Ongoing</p>	<ul style="list-style-type: none"> <li>• Expanded pool of forensic evaluators would help improve timeliness. Licensure would provide quality assurance and create professional standards for forensic evaluators.</li> <li>• Develop long-term certification of forensic evaluators, consistent with the Trueblood Court Monitor’s recommendations on mid- and long-term performance to implement a forensic certification program to sustain performance (p. 33 of the Monitor’s Quarterly Report to the Court)</li> </ul>	<p>DSHS/BHSIA staff met with DOH on 12/15/15. DOH expressed a number of concerns, and focused on the following two barriers:</p> <ul style="list-style-type: none"> <li>• Timing considerations. DOH stated that the best case scenario to establish a credential program for forensic evaluators (licensing or certification) would take at least two years, with an existing training/educational program. Lacking such a program, it would likely take longer. Per DOH, it would be best to conduct a sunrise review, requiring a formal legislative request and additional DOH review.</li> <li>• Feasibility/sustainability. DOH expressed concerns about funding. Funds are derived from a licensing program, particularly licensing fees, and must be self-sustaining. DOH cannot expect a legislative subsidy. Considering economies of scale here, the cost for annual licenses may be prohibitively high.</li> </ul>
<p><b>Labor Coordination</b></p>				

Task	Key Milestones	Status / End Dates	Anticipated Outcome & Assumptions	Results Achieved & Barriers to Completion
Engage Labor Leaders and Members	Conduct ongoing bi-monthly meetings with Labor leaders	Ongoing	<ul style="list-style-type: none"> <li>• Discuss policy, budget and operational changes likely required to comply with the Trueblood requirements</li> <li>• Obtain staff necessary to safely support operation of additional forensic and civil beds at the state hospitals</li> <li>• Obtain necessary psychiatrists and physicians to supplement services proved by employees at Western State Hospital to safely support the operation of additional forensic and civil beds</li> </ul>	<ul style="list-style-type: none"> <li>• Labor submitted no alternatives to contracting for out psy. services at WSH by the 11/25/15 deadline</li> <li>• Labor submitted no notification of intent to form an Employee Bargaining Unit</li> <li>• Prepared letter to notify Labor of plans for opening a Residential Treatment Facility at Maple Lane for issue on January 5</li> </ul>
	Notice to Labor Partners of intent to enter into direct contract negotiations for Competency Restoration Services	Complete		
	Notice to Labor Partners of recruitment incentive award pilot program	Complete		
	Notice to Labor Partners of intent to pursue an RFI for a Vendor to provide psychiatry and physician services at Western State Hospital and the potential to contract for such services	Complete		

Task	Key Milestones	Status / End Dates	Anticipated Outcome & Assumptions	Results Achieved & Barriers to Completion
	Alternatives to contracting submission deadline	11/25/2015; no submission received		
	Deadline for notification of intent to form an Employee Business Unit	12/28/2015; no notification received		
<b>Data Collection and Fiscal Modeling</b>				
Monthly report data collection	Identify and obtain needed data	Ongoing	<ul style="list-style-type: none"> <li>Obtain data for monthly reports and develop standardized reports to inform policy development and implementation</li> </ul>	<ul style="list-style-type: none"> <li>Data collection is ongoing</li> </ul>
Institute data audit process	Review data and files of cases with anomalies	Ongoing	<ul style="list-style-type: none"> <li>Ensure completeness and accuracy of wait list data</li> </ul>	<ul style="list-style-type: none"> <li>Data validation process is ongoing</li> </ul>
	Identify trends			
Hire Statistician/ Forecaster	Develop PDF	Complete; updated 12/30/15 to meet agency wide need	<ul style="list-style-type: none"> <li>Provide expertise to develop models to predict need for competency services and develop an algorithm for admissions to State Hospitals to meet the 7 day standard and make optimal use of available beds</li> </ul>	<ul style="list-style-type: none"> <li>Internal leadership team reviewed the position in a context of all the BHA data positions and determined to centralize within the Decision Support and Evaluation group at HQ. This position will be involved in forensic</li> </ul>

Task	Key Milestones	Status / End Dates	Anticipated Outcome & Assumptions	Results Achieved & Barriers to Completion
	Establish position	Complete; may have to re-establish based on changes under discussion with HRD		services modeling. We are working to update the position description.
	Recruit	On hold		
	Hire	TBD		
	Onboard	TBD		
Hire Data Architect Position	Develop PDF	Complete	<ul style="list-style-type: none"> <li>• Build a technology solution to establish a common platform to transmit data between the State Hospitals and over 240 different jurisdictions to improve timeliness</li> <li>• Provide hands-on partner training across the system</li> </ul>	<ul style="list-style-type: none"> <li>• Arranged for Data Architect skills consulting from WaTech to fill that role.</li> </ul>
	Establish position	Complete		
	Recruit	On hold		
	Hire	TBD		
	Onboard	TBD		
Hire Data Manager Position	Develop PDF	7/1/2014	<ul style="list-style-type: none"> <li>• Develop standardized data reports to inform fiscal and program operations and improve data integrity as recommended by JLARC and Groundswell</li> </ul>	<ul style="list-style-type: none"> <li>• Previously filled position is currently vacant as of 10/1/15. Conducted review of the position description as part of the overall data position and structure review. The position</li> </ul>
	Establish position	9/1/2014		
	Recruit	TBD		
	Hire	TBD		

Task	Key Milestones	Status / End Dates	Anticipated Outcome & Assumptions	Results Achieved & Barriers to Completion
	Onboard	TBD		description is being revised, but will continue to address forensic functions.
Hire Web Developer	Develop PDF	Complete	<ul style="list-style-type: none"> <li>Will work on user interface for forensic data system.</li> </ul>	<ul style="list-style-type: none"> <li>Web developer has reviewed all existing documentation</li> </ul>
	Establish position	Complete		
	Recruit	Complete		
	Hire	Complete		
	Onboard	Complete		
Forensic System Design / Development	Review data dictionary	Complete	<ul style="list-style-type: none"> <li>Integrated Forensic System with consistent data entry and tracking of all class members from creation of court order for mental competency evaluation through completion of evaluation and / or restoration (whichever is later).</li> <li>Provide capability for access by evaluators to discovery documents and any status changes, regardless of location, to reduce delays</li> <li>Provide platform for quality reporting from single system, eliminating the variability currently inherent in leveraging legacy applications not meant for this purpose</li> </ul>	<ul style="list-style-type: none"> <li>Meeting held to review the Restoration data flow. Requirements document in preparation and initial review.</li> <li>First draft data models prepared</li> </ul>
	Prepare requirements document	1/15/2016		
	Build data models	1/29/2016		
	System build	TBD		
	System test	TBD		
	Deploy	TBD		
<b>Human Resources</b>				



Task	Key Milestones	Status / End Dates	Anticipated Outcome & Assumptions	Results Achieved & Barriers to Completion
Hire Forensic Services Director	Conduct Interviews	TBD	<ul style="list-style-type: none"> <li>• Provide leadership and oversight for Forensic Mental Health Services operations</li> </ul>	<ul style="list-style-type: none"> <li>• Initial interviews completed and top three candidates identified. Town hall meetings were held with three candidates on 10/14/15 and 10/15/15. However, no candidate was selected.</li> <li>• We are currently preparing to recommence the hiring process.</li> </ul>
	Obtain staff and stakeholder feedback	TBD		
	Secretary interviews	TBD		
	Hire	TBD		
	Onboard	TBD		
Hire Office of Forensic Services HQ positions	Develop Position Descriptions	Complete	<ul style="list-style-type: none"> <li>• Provide infrastructure for forensic services system and improve effective and timely provision of competency services</li> </ul>	<ul style="list-style-type: none"> <li>• Project Manager started 10/26/2015</li> <li>• Compliance Reporting Specialist started 10/16/2015</li> <li>• Diversion/Liaison specialist position started</li> </ul>
	Establish positions	Complete		
	Post positions for recruitment	Complete		
	Conduct Interviews	In progress		

Task	Key Milestones	Status / End Dates	Anticipated Outcome & Assumptions	Results Achieved & Barriers to Completion
	Hire and Onboard	TBD		<p>9/1/15</p> <ul style="list-style-type: none"> <li>Establishing the Workforce Development positions had been put on hold pending hire of the Forensic Services Director; due to delay, a decision was now made to commence establishing these two positions. PDs developed and position establishment packages submitted to HRD Banding Committee on 12/30/15 for the 1/8/16 Banding Committee.</li> <li>One evaluator support position has been created and filled at ESH, and one administrative position at WSH is being double filled to provide this capacity while position development continues for the three funded evaluator support positions.</li> <li>See Data Collection and Fiscal Modelling section</li> </ul>
Hire additional hospital ward staff	Hired recruiter	Complete	<ul style="list-style-type: none"> <li>Obtain required staff of all classes to safely and appropriately operate additional civil and forensic beds and to meet data collection, analysis and reporting needs</li> </ul>	<ul style="list-style-type: none"> <li>Onboarded recruiter</li> <li>Developed recruitment marketing materials</li> <li>Engaged in hiring events</li> <li>Provide \$200 incentive award to employees who refer a Psychiatrist, RN, Psychiatric Security Nurse or Psychiatric Nurse Attendants</li> </ul>
	Establish recruiting marketing campaign	In progress		
	Conduct targeted hiring events	In progress		
	Pursue contracting	In progress		
	Weekly hiring status report	In progress		

Task	Key Milestones	Status / End Dates	Anticipated Outcome & Assumptions	Results Achieved & Barriers to Completion
	Institute employee hiring recruitment incentive pilot	Complete		<ul style="list-style-type: none"> <li>Continuing barrier: Availability of interested and appropriately credentialed staff to fill vacant positions</li> </ul>
	Medical transcriptionist hired	Complete		
<b>Competency Evaluation</b>				
Hire additional evaluators	Hiring at WSH	In progress	<ul style="list-style-type: none"> <li>Increase evaluation capacity and reduce wait time for evaluation</li> </ul>	<ul style="list-style-type: none"> <li>As of 12/31/15, 8 of 9 new WSH positions are filled.</li> <li>As of 12/31/15, 3 of the 4 new ESH positions have been filled.</li> <li>As of 12/10/15, one unfilled FTE position was transferred from ESH to WSH where it can more easily be filled.</li> </ul>
	Hiring at ESH	In progress		
	Transfer one ESH vacant position to WSH	Complete		
Hire two new Forensic	Complete PDs	In progress		<ul style="list-style-type: none"> <li>Decision was made to proceed with establishment and hiring into these positions;</li> </ul>
	Recruit	TBD		

Task	Key Milestones	Status / End Dates	Anticipated Outcome & Assumptions	Results Achieved & Barriers to Completion
Services Supervisors	Hire	TBD	<ul style="list-style-type: none"> <li>Will provide needed additional supervisors of Forensic Evaluator staff; leading to improved effectiveness and efficiency of evaluators</li> </ul>	the positions were previously on hold pending hire of Forensic Services Director.
Build capacity for out-station sites	Identifying Out-station sites	In progress	<ul style="list-style-type: none"> <li>Increased capacity at out-station sites will reduce wait time for evaluation</li> </ul>	<ul style="list-style-type: none"> <li>Out-station site for Everett became operational 11/03/2015. Completed and currently in operation.</li> <li>Full time evaluator is stationed in SCORE facility in King County. Evaluations at SCORE have increased by 1.5 since an evaluator was stationed there.</li> <li>Clark County outstation is anticipated to be operational by January 31, 2016.</li> <li>Regularly scheduled visiting evaluator pilot set for rotation in Thurston, Kitsap, Yakima and Lewis counties as of the end of December, 2015.</li> </ul>
	Site agreement/contract processes	In progress		
	Out-station sites operational	Completed		

Task	Key Milestones	Status / End Dates	Anticipated Outcome & Assumptions	Results Achieved & Barriers to Completion
Coordinate with forensic mental health system partners	Created a template to organize cross partner county specific discussions and to document results	Complete	<ul style="list-style-type: none"> <li>• Conversations with select jails close to hospitals or already designated for outstation sites are focused on creating space for evaluations on a regularly scheduled basis and ability to transport to state hospital. Secondly to discuss with local defenders associations regarding predictable availability to attend with clients; courts for coordination of timely transmittal of orders and documents; and local mental health agencies for additional supports and perhaps space where that is</li> </ul>	<ul style="list-style-type: none"> <li>• DSHS attended Snohomish follow up meeting where all parties agreed that out-stationed evaluator was extremely beneficial.</li> <li>• DSHS evaluators are working with Snohomish County Public Defenders to provide competency training to defenders.</li> <li>• DSHS met with Cowlitz County Jail to discuss evaluator space and possibility for video conferencing capabilities and resources for</li> </ul>
	Convene initial meetings	Ongoing		
	King County-hosted follow-up meeting	10/1/2015		

Task	Key Milestones	Status / End Dates	Anticipated Outcome & Assumptions	Results Achieved & Barriers to Completion
	Yakima County meeting with jail, defense attorneys, court and prosecutors	9/10/2015	<p>identified as a challenge.</p> <ul style="list-style-type: none"> <li>• Presentations at the WASPC conference will provide opportunity to inform about impacts of Trueblood decision and make connections with members for future planning to facilitate transfer and access to reduce wait times and provide competency services</li> </ul>	<p>involuntary medication orders.</p> <ul style="list-style-type: none"> <li>• DSHS working with Pierce County and Benton/Franklin to schedule community meeting.</li> <li>• DSHS is contacting each county directly to confirm whether participating in Community Competency Evaluation meeting.</li> <li>• Considering option to petition legislature to amend the proviso language to allow more flexibility in the funding (ex. to include mental health services AND supports, as well as substance use services and supports). In addition, we are also looking at forgoing the Medicaid dollars and using only the state dollars to fund project based plans. These changes would allow communities to develop innovative interventions that address the many factors that lead to individual's involvement in the criminal justice system that may not be addressed with Medicaid funding. It will allow DSHS to more accurately quantify gaps in policy/programs, funding and funding type needs.</li> </ul>
	Skagit County facility tour and in-person meeting	10/7/2015		

Task	Key Milestones	Status / End Dates	Anticipated Outcome & Assumptions	Results Achieved & Barriers to Completion
	Benton County facility tour and partnership meeting	9/28/2015		
	Partner meeting: City of Yakima	10/7/2015		
	Partner meeting: Snohomish	10/19/2015		
	Partner meeting: Pierce	9/30/2015		
	Partner meeting: Franklin	Ongoing		
	Present at the Washington Association of Sheriffs and Police Chiefs (WASPC) annual conference	11/17/2015		

Task	Key Milestones	Status / End Dates	Anticipated Outcome & Assumptions	Results Achieved & Barriers to Completion
Continue current County-conducted evaluation system until 2018	Define data elements needed from counties that are conducting their own evaluations	11/30/2015	<ul style="list-style-type: none"> <li>Obtain data needed from counties in order to meet court ordered reporting requirements</li> </ul>	<ul style="list-style-type: none"> <li>DSHS has reached out to the Washington Association of Counties to see if their Annual Conference (November) is an appropriate audience and venue to hold a discussion with interested counties.</li> <li>E-mailed individual County Commissioners on October 19, 2015 regarding Community Competency Evaluations. Counties interested in program participation were asked to submit the name of individuals in their communities who should be involved in conversations related to the determination of data elements that should be collected each month. Submissions were due October 26, 2015. Three counties responded. DSHS is contacting each county directly to ensure declination of participation.</li> <li>DSHS presented at the 2015 Washington Association of Sheriffs and Police Chiefs Conference 11/17/15. Topic discussed was 5177 Implementation and multiple collaborative opportunities were identified.</li> </ul>



Task	Key Milestones	Status / End Dates	Anticipated Outcome & Assumptions	Results Achieved & Barriers to Completion
Conduct Value Stream Map (VSM) of Competency Service Process	Action items to be incorporated into Tiger Team plans to implement recommendations	Ongoing	<ul style="list-style-type: none"> <li>Develop current state map of the current system and suggestions that can be implemented to improve delivery of competency services</li> </ul>	<ul style="list-style-type: none"> <li>Key resources have been hired and initial designs of replacement system to begin.</li> </ul>
Conduct a Lean event at WSH to reform Administrative Assistant workflow	Planning for Lean event	Complete	<ul style="list-style-type: none"> <li>Multiple reforms to workflow patterns, assignments and procedures will maximize ability to meet outpatient and inpatient evaluation timeliness; determine how to distribute administrative positions between facilities.</li> </ul>	<ul style="list-style-type: none"> <li>The VSM was conducted between July and September 2015 and administrative support staff at WSH and ESH completed current state maps of the administrative steps needed to improve orders. Action plans were developed to include immediate improvements which were made by staff right away, interim improvements which can be accomplished with minor IT changes and a future state map that will inform the new data management system.</li> </ul>
	Conduct Lean event	Complete		
	Schedule event to complete ideal future state map	TBD		
Explore triage system possibilities	Test a remote access system	11/30/2015	<ul style="list-style-type: none"> <li>Provide out-stationed evaluators with the capacity to access DSHS systems and electronic health records remotely</li> </ul>	<ul style="list-style-type: none"> <li>We have concluded our initial testing of mobile solutions for the Forensic Evaluators.</li> <li>We are preparing for a pilot test with evaluators to test the mobile solution including</li> </ul>
	Pilot a remote access system to be used in the field	TBD		

Task	Key Milestones	Status / End Dates	Anticipated Outcome & Assumptions	Results Achieved & Barriers to Completion
	Determine if capacity exists to implement within current budget	Pending completion of testing	<ul style="list-style-type: none"> <li>• Support more rapid entry of evaluation information and reduce duplicate data entry</li> </ul>	<p>pilot testing of aircard laptop combination, to be ordered week of 1/4/16. Software adjustments may be made to laptops if issues arise after they are in place. Skipping the small pilot and going for state wide rollout.</p> <ul style="list-style-type: none"> <li>• Preparing approval of purchase of digital recorders and transcription pedals for ESH. Purchase to be approved 1/4/16 and training to begin 1/13/16 for immediate implementation when equipment arrives.</li> <li>• Two outstations have been staffed and equipped. (Everett and SCORE). IT resources have been allocated to support these outstations. As of 12/24/15 SCORE reported that there were 0 evaluations pending.</li> </ul>

Task	Key Milestones	Status / End Dates	Anticipated Outcome & Assumptions	Results Achieved & Barriers to Completion
Evaluate potential for distributing mobile equipment	Obtain additional information and recommendations from Groundswell	TBD	<p>Establish an efficient evaluation to identify individuals who:</p> <ul style="list-style-type: none"> <li>• Need inpatient services due to serious mental health condition</li> <li>• Clearly do not require inpatient evaluation services; or</li> <li>• Are clearly competent due to changes in their condition since the issuance of an order for evaluation (such as no longer drug affected)</li> </ul>	<ul style="list-style-type: none"> <li>• Discussions with local jurisdiction partnerships (as detailed above) have identified current local programs that may have tools in use that can be piloted as early screening tools.</li> </ul>
<b>Competency Restoration</b>				
Western State Hospital (WSH); S4 Ward: add 15 beds	Design and Permitting	Complete	<ul style="list-style-type: none"> <li>• Serves overall plan to add 90 beds and expand State Hospital bed capacity to meet Court ordered compliance date</li> <li>• Moving forensic patients from E1 to S4 will open restoration beds</li> </ul>	<ul style="list-style-type: none"> <li>• Increased Competency Restoration bed capacity by 10 beds</li> <li>• Currently 7 patients have been moved to S4. This will move to 15 patients by January 15, 2016.</li> <li>• Lockdown for the Quadrangle will be January 11, 2016. Completion will allow transfer of additional patients.</li> </ul>
	Construction	Complete		
	Labor Discussions	Complete		
	Staff Onboarding	Complete		
	Ward preparation and patient movement	Complete		
	Complete fence project	Complete		
	Complete Guard Shack	Complete		
	Added 10 beds	Complete		
Add 5 additional beds	1/15/2016			
	Design and Permitting	Complete		<ul style="list-style-type: none"> <li>• Due to recent CMS survey results and DSHS plans to meet the requirements set out by</li> </ul>

Task	Key Milestones	Status / End Dates	Anticipated Outcome & Assumptions	Results Achieved & Barriers to Completion
WSH; E2 and F3 Wards: add 30 beds	Patient movement: E2 to E4	Complete	<ul style="list-style-type: none"> <li>Serves overall plan to add 90 beds and expand State Hospital bed capacity to meet Court ordered compliance date</li> </ul>	<p>CMS, the plans to open F3 have been postponed.</p> <ul style="list-style-type: none"> <li>Physical renovations for F3 have been completed except for door replacements.</li> <li>Difficulties in bringing on sufficient staffing have been a major hurdle.</li> <li>All physical/architectural modifications to WSH will be complete on 1/7/2016.</li> </ul>
	Construction	Complete		
	Labor Discussions	On hold		
	Develop hiring plan	Complete		
	Ward Preparation and patient movement F3 to E2	Complete		
	Renovations to F3	1/7/2016		
Bed Occupancy	TBD			
ESH; 3S Ward: add 30 beds	Review current ward occupancy and make relocation plan	Complete	<ul style="list-style-type: none"> <li>Serves overall plan to add 90 beds and expand State Hospital bed capacity to meet Court ordered compliance date</li> </ul>	<ul style="list-style-type: none"> <li>Negotiated with L&amp;I and determined that no additional emergency circuits are required.</li> <li>Received emergency declaration and secured contractor</li> <li>Identified adequate number of patients to transfer from 3S to new 2N3 ward</li> <li>Security and programmatic renovations underway on 3S2 ward</li> </ul> <p>Barriers include:</p>
	Develop staffing and hiring plan	Complete		
	Install cabling needed for office relocation	Complete		
	Relocate staff offices on 2N3 to 1N3 and 3N3	Complete		
	Design and Permitting	Complete		

Task	Key Milestones	Status / End Dates	Anticipated Outcome & Assumptions	Results Achieved & Barriers to Completion
	Negotiations with L & I	Complete		<ul style="list-style-type: none"> <li>• Ability to recruit enough staff to support additional 15 beds in Phase II</li> </ul>
	Construction: Ward renovation	Complete		
	Construction: Patient safety--anti-ligature work)	Complete		
	Construction: Update nurse call system/intercom	Complete		
	Construction: Install cameras	Complete		
	CMS Survey for new 2N3 ward	TBD		
	Staff Ward Preparation and moving NGRI patients from 3S to 2N3	Complete		
	Comp Restoration Bed Occupancy Phase I (15 beds)	Complete		
	Comp Restoration Bed Occupancy Phase II (15 beds)	TBD; Adding up to 5 beds per week depending on staffing levels		

Task	Key Milestones	Status / End Dates	Anticipated Outcome & Assumptions	Results Achieved & Barriers to Completion
Open Competency Restoration treatment program at Maple Lane: 24 beds	Assess The Joint Commission (TJC) and Centers for Medicare and Medicaid Services (CMS) certification requirements	Complete	<ul style="list-style-type: none"> <li>Identify alternate facility capacity to meet Trueblood compliance deadline of 01/02/16</li> <li>Any competency restoration treatment program at Maple Lane is anticipated to transfer to operation at a State Hospital before DOC would be housing inmates on that campus</li> </ul>	<ul style="list-style-type: none"> <li>Special Use Permit approved</li> <li>MOU has been signed by DOC and DSHS</li> <li>Construction plans and scope were finalized. Contractor began structural modifications required to open facility</li> <li>BHSIA staff met with Human Resources Division staff on 12/8/15 and 12/23/15 to establish a staffing plan, and finalize position classifications and next steps</li> <li>Correct Care Recovery Solutions (CCRS) was identified and contracted as the restoration service provider. Decision making criteria were submitted to the Court Monitor. CCRS submitted their implementation plan and has begun work towards achieving licensure and certification</li> <li>BHSIA continues to coordinate with staff at Green Hill School and DSHS Consolidated Maintenance Operations (CMO) to finalize food and laundry arrangements</li> <li>BHSIA IT lead identified and engaged to ensure that IT needs and requirements for both BHSIA and CCRS are met and ready in time for opening</li> </ul>
	Test HVAC, lights, etc.	Complete		
	Complete Special Use Permit (SUP) Process	Complete		
	Post Essential Public Facilities notice	Complete		
	Attend local school board meeting	Complete		
	Conduct a required public meeting	Complete		
	Participate in SUP Pre-Submission Conference	Complete		
	Establish DOC MOU	Complete		
	Finalize the telephony, data circuitry, printer requirements with vendor	TBD		

Task	Key Milestones	Status / End Dates	Anticipated Outcome & Assumptions	Results Achieved & Barriers to Completion
	Hire DSHS staff to support a hybrid staffing model at MLS	3/31/2016		
	Identify contractor to implement restoration services at MLS	Complete		
	Complete construction modifications required to open MLS	3/1/2016		
	Obtain Dept. of Health Licensure and DSHS RTF certification	4/1/2016		
	Finalize service plans to cover laundry, food, transportation of goods, etc. for MLS; Draft Interagency Agreement to capture decisions	In progress		

Task	Key Milestones	Status / End Dates	Anticipated Outcome & Assumptions	Results Achieved & Barriers to Completion
	IT services are available at MLS and electronic equipment configured and ready to use	3/1/2016		
Establish Community alternative sites for competency restoration in Yakima: up to 30 beds	Statutory direction	Complete	<ul style="list-style-type: none"> <li>• Planning for 24 beds</li> <li>• Anticipated duration of one year and possible one year extension</li> <li>• Identify alternate facility capacity to support timely competency services that will meet the Trueblood compliance deadline of 01/02/16</li> <li>• It is anticipated that trauma informed care (a national best practice for psychiatric hospitals) and the Breaking Barriers program used at WSH for competency restoration will be the same model used in this RTF</li> <li>• WSH Center for Forensic Services supervising psychiatrist is willing to help provide training and consultation to Comprehensive prescribers and WSH pharmacy was consulted regarding medication formularies to be used</li> </ul>	<ul style="list-style-type: none"> <li>• Fully executed contract signed on 10/22/15, to start 10/23/15.</li> <li>• Emergency rules to certify agencies to provide competency restoration services were filed with the Washington State Code Reviser's office on 10/07/15 and became effective on that date.</li> <li>• DSHS is moving forward with preparations to file a permanent rule filing after receiving stakeholder input. The initial preproposal statement of inquiry (CR-101) to implement rules was filed on August 27, 2015. A proposed rulemaking (CR-102) packet was filed on December 18, 2015. A hearing is to be held at DSHS's OB2 on January 26, with all comments to be received by the end of that day. We then plan to have the final rule (CR-103) submitted by the end of January. The permanent rule becomes effective 31 days</li> </ul>
	Meet 41.06.142 obligations	Complete		
	Post RFI	Complete		
	Host information day	Complete		
	RFI responses due	Complete		
	Vendor presentations	Complete		
	Post RFP	Not pursued		
	Tour Yakima facility	Complete		
	Establish emergency rule to support authority to operate	Complete		
	Negotiate contract	Complete		
	Develop referral criteria	Complete		
Execute contract	Complete			



Task	Key Milestones	Status / End Dates	Anticipated Outcome & Assumptions	Results Achieved & Barriers to Completion
	Desired service begin	3/1/2016	<ul style="list-style-type: none"> <li>Additional collaborations will be instituted to support ongoing comparable treatment services to patients served in this RTF and to ensure ongoing quality and oversight within the contract monitoring to be done by DSHS</li> </ul>	<p>after filing.</p> <p>Implementation date was extended to 3/1/16 to accommodate the following schedule:</p> <ul style="list-style-type: none"> <li>Initial consultation with DOH construction review - 9/28/2015</li> <li>Initiate process for RTF licensing with DOH - 10/1/2015</li> <li>Sign contract with DSHS to provide CR services; Full push for recruiting - 10/23/2015</li> <li>Sign Facility Contract with Yakima County Corrections - 11/04/2015</li> <li>Complete Program manual for review' Complete policies and procedures for review - 11/15/15</li> <li>Finalize renovation plans and submit for approval - 12/07/2015</li> <li>Sign contractor agreement to complete renovations - 12/11/2015</li> <li>Complete functional plan for review; Submit application for RTF Licensure; Submit application for certification with DBHR - 12/15/15</li> <li>Renovations completed and facility ready for use; Open doors to new admissions - 3/1/16</li> <li>Staff training with Western State (40 hours) - February 2016</li> <li>Two week mock opening staff training - February 2016</li> </ul>

Task	Key Milestones	Status / End Dates	Anticipated Outcome & Assumptions	Results Achieved & Barriers to Completion
County transport of patients	Coordinate with counties to develop transport protocols	TBD	<ul style="list-style-type: none"> <li>Ensure timely transport of patients to support delivery of competency services as directed in court order</li> </ul>	<ul style="list-style-type: none"> <li>See updates in Evaluation partner discussion section(s) above</li> </ul>
<b>Diversion Alternatives</b>				
Implement new SB 5177 provisions for dismissal of charges & referral to treatment	Issuance of RFA for distribution of appropriated funding	TBD	<ul style="list-style-type: none"> <li>Prosecutor can dismiss criminal charges without prejudice &amp; refer to community-based mental health services</li> </ul>	<ul style="list-style-type: none"> <li>DSHS decided to explore alternative options for the distribution of 5177 funds.</li> </ul>
	Diversion Programs operational	TBD		
Establish a Diversion Taskforce	Establish task force membership	4/1/2016	<ul style="list-style-type: none"> <li>Establish a taskforce modeled after Michigan's Mental Health Diversion Council, and membership from key state partners is currently being developed to include a charter</li> </ul>	<ul style="list-style-type: none"> <li>Governor's Office has identified staff from HCA, DOC, and DSHS to participate in initial internal workgroup</li> </ul>
	Develop taskforce charter and scope	4/1/2016		

Task	Key Milestones	Status / End Dates	Anticipated Outcome & Assumptions	Results Achieved & Barriers to Completion
	Convene taskforce	4/1/2016	and scope. It is anticipated that the scope will be broader than outlined in SB5177 which includes only post-booking diversion.	<ul style="list-style-type: none"> <li>Decision Package has been submitted to fund efforts. The Governor's proposed budget released in December includes the requested funding.</li> <li>Anticipated timeframe for a signed executive order and appointment of partners – January 2016</li> </ul>
<b>Staff and Patient Safety</b>				
State Hospital Psychiatric Intensive Care Unit (PICU)	Construction	4/1/2016	<ul style="list-style-type: none"> <li>Recommendation of Labor/Management Ad Hoc Safety Committee to enhance staff and patient safety</li> </ul>	<ul style="list-style-type: none"> <li>Supplemental budget allocated \$339k for development of a PICU—construction will take place to establish an 8 bed space</li> <li>Proposed budget has funding for 23 FTE to implement a 1-3 bed PICU</li> <li>Bed occupancy in excess of 3 patients dependent on additional funding</li> </ul>
	Staff Ward Preparation	4/15/2016		
	1-3 Bed Occupancy	4/19/2016		
	Occupancy beyond 3 beds	TBD		
Psychiatric Emergency Response Teams (PERT) teams (1 additional WSH and 1 at ESH)	Labor discussions	Complete	<ul style="list-style-type: none"> <li>Recommendation of Labor/Management Ad Hoc Safety Committee</li> </ul>	<ul style="list-style-type: none"> <li>Likely need PERT team at ESH forensic wards for higher acuity patients who have been in jail for less time</li> <li>Has been implemented at ESH and is pending implementation on the civil side at WSH.</li> <li>Weekly work groups focused on rollout of</li> </ul>
	Staff training	Complete		
	Equipment purchase	Complete		
	Staff onboarding	Complete ESH; pending civil at WSH		

Task	Key Milestones	Status / End Dates	Anticipated Outcome & Assumptions	Results Achieved & Barriers to Completion
	PERT teams operational	Complete ESH; pending civil at WSH		PERT team at WSH on civil side. Training for team members to begin 1/15/16.
Staff safety training in de-escalation and other skills to reduce workplace violence designed and delivered by State Hospital staff experts	Approval of proposed budget	Complete	<ul style="list-style-type: none"> <li>Recommendation of Labor/Management Ad Hoc Safety Committee to enhance patient and staff safety</li> </ul>	Budget provided 9 of the requested fill behind FTEs to include: <ul style="list-style-type: none"> <li>PSA/MHT Training—16 hours</li> <li>LPN Training—18 hours</li> <li>RN Training—24 hours</li> </ul>
	Develop curriculum	Complete		
	Broaden training of Best Practices for Interaction with Patients	Ongoing		
	Develop system to monitor annual training implementation	Ongoing		
Conduct comprehensive assault incident reviews	Hire 2 patient-to-staff assault incident reviewers	Complete	<ul style="list-style-type: none"> <li>Post-incident de-briefing and root cause analysis of assault incidents will identify necessary systems changes to increase staff safety</li> </ul>	<ul style="list-style-type: none"> <li>Assault incident reviewer FTEs were not in BHSIA's budget but we absorbed the cost and went forward.</li> </ul>
	Establish assault review workgroup	Complete		

## Appendix A: Class Member-- Evaluation Information for November 2015

Hospital	Class Member	Location	County	Offense	Completion Method or Incomplete	Order Signed Date	Number of days from signed order to:			
							Order Received	Discovery Received	Complete	Incomplete: End of Reporting Period
WSH	2348	JAIL	KING	MISDEMEANOR	WITHDRAWN	9/2/2015	7	7	64	.
WSH	2465	JAIL	SNOHOMISH	MISDEMEANOR	INCOMPLETE	9/17/2015	0	0	.	74
WSH	2470	JAIL	KING	MISDEMEANOR	INCOMPLETE	9/18/2015	0	0	.	73
WSH	2494	JAIL	COWLITZ	FELONY	FAXED	9/23/2015	0	0	44	.
WSH	2510	JAIL	THURSTON	FELONY	INCOMPLETE	9/24/2015	0	0	.	67
WSH	2529	JAIL	SNOHOMISH	MISDEMEANOR	INCOMPLETE	9/30/2015	0	0	.	61
WSH	2686	JAIL	KING	FELONY	FAXED	9/30/2015	1	1	44	.
WSH	2687	JAIL	KING	FELONY	INCOMPLETE	9/30/2015	1	1	.	61
WSH	2713	JAIL	CLARK	FELONY	FAXED	10/5/2015	0	0	35	.
WSH	2714	JAIL	KING	FELONY	TIC	10/5/2015	0	0	28	.
WSH	2728	JAIL	KING	FELONY	FAXED	10/7/2015	1	1	29	.
WSH	2738	JAIL	SNOHOMISH	MISDEMEANOR	EVAL CLOSED	10/7/2015	12	12	29	.
WSH	2745	JAIL	KING	FELONY	FAXED	10/8/2015	0	0	36	.
WSH	2758	JAIL	WHATCOM	MISDEMEANOR	FAXED	10/8/2015	6	6	27	.
WSH	2760	JAIL	KING	FELONY	FAXED	10/9/2015	4	4	32	.
WSH	2763	JAIL	KING	MISDEMEANOR	FAXED	10/10/2015	6	12	27	.
WSH	2764	INPATIENT	KING	FELONY CLASS B	BED OFFERED	10/12/2015	0	0	21	.
WSH	2766	JAIL	KING	MISDEMEANOR	FAXED	10/12/2015	0	0	21	.
WSH	2767	JAIL	KING	FELONY	FAXED	10/12/2015	1	1	49	.
WSH	2768	JAIL	KING	MISDEMEANOR	WITHDRAWN	10/12/2015	1	1	24	.
WSH	2769	JAIL	KING	FELONY	FAXED	10/12/2015	1	1	37	.
WSH	2772	JAIL	KING	MISDEMEANOR	INCOMPLETE	10/12/2015	0	1	.	49
WSH	2780	JAIL	MASON	FELONY	INCOMPLETE	10/12/2015	1	1	.	49
WSH	2782	JAIL	THURSTON	MISDEMEANOR	INCOMPLETE	10/12/2015	0	0	.	49

WSH	2783	INPATIENT	KING	MISDEMEANOR	BED OFFERED	10/13/2015	1	1	20	.
WSH	2784	INPATIENT	KING	MISDEMEANOR	BED OFFERED	10/13/2015	1	1	22	.
WSH	2786	JAIL	KING	MISDEMEANOR	FAXED	10/13/2015	0	0	24	.
WSH	2787	JAIL	KING	MISDEMEANOR	FAXED	10/13/2015	0	0	21	.
WSH	2788	JAIL	KING	MISDEMEANOR	FAXED	10/13/2015	0	0	24	.
WSH	2789	JAIL	KING	MISDEMEANOR	FAXED	10/13/2015	0	0	24	.
WSH	2790	JAIL	KING	MISDEMEANOR	TIC	10/13/2015	0	0	20	.
WSH	2795	INPATIENT	THURSTON	FELONY CLASS C	BED OFFERED	10/14/2015	6	6	29	.
WSH	2799	JAIL	KING	MISDEMEANOR	INCOMPLETE	10/14/2015	0	0	.	47
WSH	2800	JAIL	KING	MISDEMEANOR	FAXED	10/14/2015	0	0	19	.
WSH	2801	JAIL	KING	MISDEMEANOR	FAXED	10/14/2015	7	7	23	.
WSH	2807	JAIL	KING	FELONY	TIC	10/15/2015	0	0	22	.
WSH	2814	JAIL	SNOHOMISH	MISDEMEANOR	EVAL CLOSED	10/15/2015	0	0	41	.
WSH	2815	JAIL	CLALLAM	FELONY	FAXED	10/16/2015	0	0	19	.
WSH	2821	JAIL	PIERCE	FELONY	INCOMPLETE	10/16/2015	10	10	.	45
WSH	2824	INPATIENT	PIERCE	FELONY CLASS B	BED OFFERED	10/19/2015	0	0	24	.
WSH	2825	JAIL	KING	FELONY	TIC	10/19/2015	0	0	24	.
WSH	2826	JAIL	KING	MISDEMEANOR	FAXED	10/19/2015	0	0	22	.
WSH	2827	JAIL	KING	MISDEMEANOR	WITHDRAWN	10/19/2015	0	0	16	.
WSH	2830	JAIL	MASON	FELONY	FAXED	10/19/2015	11	11	22	.
WSH	2834	JAIL	SNOHOMISH	MISDEMEANOR	WITHDRAWN	10/20/2015	6	6	16	.
WSH	2835	JAIL	KING	FELONY	FAXED	10/21/2015	0	0	23	.
WSH	2836	JAIL	KING	FELONY	FAXED	10/21/2015	0	0	.	40
WSH	2838	JAIL	PIERCE	FELONY	FAXED	10/21/2015	0	0	13	.
WSH	2843	JAIL	KING	FELONY	FAXED	10/22/2015	0	0	26	.
WSH	2844	JAIL	KING	FELONY	FAXED	10/22/2015	0	0	.	39
WSH	2845	JAIL	KING	MISDEMEANOR	FAXED	10/22/2015	4	4	27	.
WSH	2846	JAIL	KING	MISDEMEANOR	WITHDRAWN	10/22/2015	0	0	11	.
WSH	2849	JAIL	SKAGIT	FELONY	FAXED	10/22/2015	1	1	26	.
WSH	2850	JAIL	SNOHOMISH	MISDEMEANOR	FAXED	10/22/2015	0	0	14	.
WSH	2851	JAIL	CLALLAM	MISDEMEANOR	FAXED	10/23/2015	0	0	18	.

WSH	2855	JAIL	WHATCOM	MISDEMEANOR	FAXED	10/23/2015	3	3	13	.
WSH	2856	JAIL	KING	MISDEMEANOR	WITHDRAWN	10/24/2015	2	2	9	.
WSH	2857	JAIL	KING	MISDEMEANOR	WITHDRAWN	10/24/2015	2	2	9	.
WSH	2858	JAIL	KING	MISDEMEANOR	FAXED	10/24/2015	2	2	37	.
WSH	2859	JAIL	KING	MISDEMEANOR	FAXED	10/26/2015	0	0	21	.
WSH	2860	JAIL	KING	MISDEMEANOR	FAXED	10/26/2015	0	0	15	.
WSH	2866	JAIL	THURSTON	FELONY	FAXED	10/26/2015	0	0	9	.
WSH	2867	JAIL	KING	MISDEMEANOR	FAXED	10/27/2015	0	0	14	.
WSH	2868	JAIL	KING	MISDEMEANOR	FAXED	10/27/2015	1	1	17	.
WSH	2869	JAIL	KING	MISDEMEANOR	FAXED	10/27/2015	1	1	21	.
WSH	2870	JAIL	LEWIS	MISDEMEANOR	FAXED	10/27/2015	1	1	7	.
WSH	2871	JAIL	PIERCE	MISDEMEANOR	FAXED	10/27/2015	1	1	6	.
WSH	2872	JAIL	SNOHOMISH	MISDEMEANOR	FAXED	10/27/2015	1	1	16	.
WSH	2873	INPATIENT	KING	MISDEMEANOR	BED OFFERED	10/28/2015	1	1	20	.
WSH	2874	INPATIENT	KING	MISDEMEANOR	BED OFFERED	10/28/2015	1	1	20	.
WSH	2875	JAIL	CLARK	FELONY	FAXED	10/28/2015	1	1	9	.
WSH	2876	JAIL	CLARK	FELONY	FAXED	10/28/2015	5	5	9	.
WSH	2877	JAIL	CLARK	MISDEMEANOR	FAXED	10/28/2015	0	0	9	.
WSH	2878	JAIL	JEFFERSON	FELONY	FAXED	10/28/2015	1	1	8	.
WSH	2879	JAIL	KING	FELONY	FAXED	10/28/2015	0	0	21	.
WSH	2880	JAIL	KING	MISDEMEANOR	FAXED	10/28/2015	0	0	8	.
WSH	2881	JAIL	KING	MISDEMEANOR	FAXED	10/28/2015	0	0	22	.
WSH	2882	JAIL	KING	MISDEMEANOR	FAXED	10/28/2015	0	0	6	.
WSH	2883	JAIL	KING	MISDEMEANOR	FAXED	10/28/2015	0	0	7	.
WSH	2884	JAIL	KING	MISDEMEANOR	FAXED	10/28/2015	0	0	7	.
WSH	2885	JAIL	MASON	MISDEMEANOR	FAXED	10/28/2015	2	2	6	.
WSH	2886	JAIL	MASON	MISDEMEANOR	INCOMPLETE	10/28/2015	2	2	.	33
WSH	2888	JAIL	PIERCE	MISDEMEANOR	FAXED	10/28/2015	0	0	7	.
WSH	2889	JAIL	WHATCOM	MISDEMEANOR	FAXED	10/28/2015	1	1	21	.
WSH	2890	JAIL	KING	MISDEMEANOR	FAXED	10/29/2015	0	0	8	.
WSH	2891	JAIL	KING	MISDEMEANOR	FAXED	10/29/2015	1	1	20	.

WSH	2892	JAIL	PIERCE	FELONY	FAXED	10/29/2015	1	1	6	.
WSH	2893	JAIL	PIERCE	MISDEMEANOR	FAXED	10/29/2015	1	1	8	.
WSH	3028	JAIL	KING	FELONY	TIC	9/1/2015	42	42	66	.
WSH	3029	INPATIENT	MASON	FELONY CLASS A	BED OFFERED	10/12/2015	1	1	39	.
WSH	3030	INPATIENT	PIERCE	FELONY CLASS A	BED OFFERED	10/14/2015	2	2	30	.
WSH	3031	JAIL	KING	MISDEMEANOR	FAXED	10/15/2015	1	1	21	.
WSH	3032	JAIL	KING	FELONY	INCOMPLETE	10/16/2015	0	0	.	45
WSH	3033	JAIL	KING	FELONY	FAXED	10/16/2015	17	17	32	.
WSH	3034	JAIL	PIERCE	FELONY	FAXED	10/16/2015	18	18	24	.
WSH	3035	JAIL	KING	MISDEMEANOR	INCOMPLETE	10/20/2015	14	14	.	41
WSH	3038	JAIL	CLARK	FELONY	FAXED	10/27/2015	7	7	20	.
WSH	3039	JAIL	CLARK	MISDEMEANOR	FAXED	10/27/2015	7	7	16	.
WSH	3040	JAIL	CLARK	MISDEMEANOR	FAXED	10/27/2015	7	7	21	.
WSH	3041	JAIL	CLARK	FELONY	FAXED	10/28/2015	6	6	16	.
WSH	3042	JAIL	CLARK	MISDEMEANOR	INCOMPLETE	10/28/2015	7	7	.	33
WSH	3043	JAIL	CLARK	MISDEMEANOR	FAXED	10/28/2015	7	7	19	.
WSH	3045	JAIL	KING	FELONY	FAXED	10/30/2015	3	3	.	31
WSH	3046	JAIL	KING	MISDEMEANOR	FAXED	10/30/2015	0	0	21	.
WSH	3047	JAIL	KING	MISDEMEANOR	FAXED	10/30/2015	0	4	20	.
WSH	3048	JAIL	PIERCE	MISDEMEANOR	INCOMPLETE	10/30/2015	3	3	.	31
WSH	3049	JAIL	SNOHOMISH	FELONY	FAXED	10/30/2015	0	0	18	.
WSH	3070	JAIL	KING	FELONY	TIC	9/1/2015	42	42	66	.
WSH	3071	INPATIENT	MASON	FELONY CLASS A	BED OFFERED	10/12/2015	1	1	39	.
WSH	3072	INPATIENT	PIERCE	FELONY CLASS A	BED OFFERED	10/14/2015	2	2	30	.
WSH	3073	JAIL	KING	MISDEMEANOR	FAXED	10/15/2015	1	1	21	.
WSH	3074	JAIL	KING	FELONY	FAXED	10/16/2015	17	17	32	.
WSH	3075	JAIL	PIERCE	FELONY	FAXED	10/16/2015	18	18	24	.
WSH	3076	JAIL	KING	FELONY	INCOMPLETE	10/16/2015	0	0	.	45
WSH	3077	JAIL	KING	MISDEMEANOR	INCOMPLETE	10/20/2015	14	14	.	41
WSH	3078	JAIL	CLARK	FELONY	FAXED	10/27/2015	7	7	20	.
WSH	3079	JAIL	CLARK	MISDEMEANOR	FAXED	10/27/2015	7	7	16	.



WSH	3080	JAIL	CLARK	MISDEMEANOR	FAXED	10/27/2015	7	7	21	.
WSH	3081	JAIL	CLARK	FELONY	FAXED	10/28/2015	6	6	16	.
WSH	3082	JAIL	CLARK	MISDEMEANOR	FAXED	10/28/2015	7	7	19	.
WSH	3083	JAIL	CLARK	MISDEMEANOR	INCOMPLETE	10/28/2015	7	7	.	33
WSH	3084	INPATIENT	THURSTON	FELONY CLASS A	BED OFFERED	10/29/2015	7	7	21	.
WSH	3085	JAIL	KING	MISDEMEANOR	FAXED	10/30/2015	0	4	20	.
WSH	3086	JAIL	KING	MISDEMEANOR	FAXED	10/30/2015	0	0	21	.
WSH	3087	JAIL	SNOHOMISH	FELONY	FAXED	10/30/2015	0	0	18	.
WSH	3088	JAIL	KING	FELONY	FAXED	10/30/2015	3	3	.	31
WSH	3089	JAIL	PIERCE	MISDEMEANOR	INCOMPLETE	10/30/2015	3	3	.	31
WSH	3090	INPATIENT	KING	FELONY CLASS B	BED OFFERED	11/2/2015	0	0	21	.
WSH	3091	INPATIENT	KING	MISDEMEANOR	BED OFFERED	11/2/2015	1	1	23	.
WSH	3092	JAIL	CLARK	FELONY	FAXED	11/2/2015	1	1	14	.
WSH	3093	JAIL	GRAYS HARBOR	FELONY	FAXED	11/2/2015	0	4	8	.
WSH	3094	JAIL	KING	FELONY	FAXED	11/2/2015	0	0	21	.
WSH	3095	JAIL	KING	MISDEMEANOR	FAXED	11/2/2015	0	0	7	.
WSH	3096	JAIL	KING	MISDEMEANOR	FAXED	11/2/2015	0	0	18	.
WSH	3097	JAIL	MASON	FELONY	FAXED	11/2/2015	1	1	2	.
WSH	3098	JAIL	THURSTON	MISDEMEANOR	FAXED	11/2/2015	1	1	8	.
WSH	3099	JAIL	THURSTON	MISDEMEANOR	FAXED	11/2/2015	0	1	16	.
WSH	3100	JAIL	KING	MISDEMEANOR	TIC	11/2/2015	0	0	2	.
WSH	3101	JAIL	KING	MISDEMEANOR	WITHDRAWN	11/2/2015	0	0	7	.
WSH	3102	JAIL	KING	MISDEMEANOR	WITHDRAWN	11/2/2015	0	0	7	.
WSH	3103	INPATIENT	PIERCE	FELONY CLASS B	BED OFFERED	11/3/2015	0	0	0	.
WSH	3104	JAIL	CLARK	FELONY	FAXED	11/3/2015	2	2	16	.
WSH	3105	JAIL	CLARK	MISDEMEANOR	FAXED	11/3/2015	2	2	14	.
WSH	3106	JAIL	KING	MISDEMEANOR	FAXED	11/3/2015	1	1	15	.
WSH	3107	JAIL	PIERCE	FELONY	FAXED	11/3/2015	0	0	12	.
WSH	3108	JAIL	PIERCE	FELONY	FAXED	11/3/2015	2	2	21	.
WSH	3109	JAIL	PIERCE	MISDEMEANOR	FAXED	11/3/2015	0	0	7	.

WSH	3110	JAIL	SNOHOMISH	MISDEMEANOR	FAXED	11/3/2015	0	0	10	.
WSH	3111	JAIL	THURSTON	FELONY	FAXED	11/3/2015	0	0	21	.
WSH	3112	INPATIENT	PIERCE	MISDEMEANOR	CANCELLED	11/3/2015	10	10	.	27
WSH	3113	JAIL	PIERCE	MISDEMEANOR	TIC	11/3/2015	0	0	10	.
WSH	3114	INPATIENT	KING	MISDEMEANOR	BED OFFERED	11/4/2015	1	1	20	.
WSH	3115	INPATIENT	PIERCE	FELONY CLASS C	BED OFFERED	11/4/2015	1	1	26	.
WSH	3116	JAIL	KING	MISDEMEANOR	FAXED	11/4/2015	1	1	20	.
WSH	3117	JAIL	PIERCE	FELONY	FAXED	11/4/2015	1	1	9	.
WSH	3118	JAIL	PIERCE	MISDEMEANOR	FAXED	11/4/2015	0	0	9	.
WSH	3119	JAIL	PIERCE	MISDEMEANOR	FAXED	11/4/2015	1	1	9	.
WSH	3120	JAIL	PIERCE	MISDEMEANOR	FAXED	11/4/2015	0	0	14	.
WSH	3121	JAIL	SNOHOMISH	MISDEMEANOR	FAXED	11/4/2015	1	5	8	.
WSH	3122	JAIL	SNOHOMISH	MISDEMEANOR	FAXED	11/4/2015	0	0	14	.
WSH	3123	JAIL	KING	MISDEMEANOR	FAXED	11/4/2015	1	1	20	.
WSH	3124	JAIL	GRAYS HARBOR	MISDEMEANOR	FAXED	11/5/2015	0	0	8	.
WSH	3125	JAIL	KING	MISDEMEANOR	FAXED	11/5/2015	0	0	7	.
WSH	3126	JAIL	KING	MISDEMEANOR	FAXED	11/5/2015	0	0	8	.
WSH	3127	JAIL	KING	MISDEMEANOR	FAXED	11/5/2015	0	0	14	.
WSH	3128	JAIL	KING	MISDEMEANOR	FAXED	11/5/2015	0	0	15	.
WSH	3129	JAIL	PIERCE	MISDEMEANOR	FAXED	11/5/2015	0	0	11	.
WSH	3130	JAIL	SNOHOMISH	FELONY	FAXED	11/5/2015	0	0	7	.
WSH	3131	JAIL	SNOHOMISH	FELONY	FAXED	11/5/2015	0	0	15	.
WSH	3132	INPATIENT	KING	FELONY CLASS C	BED OFFERED	11/5/2015	0	0	25	.
WSH	3133	JAIL	KING	FELONY	FAXED	11/5/2015	0	0	.	25
WSH	3134	JAIL	KING	FELONY	FAXED	11/5/2015	1	1	.	25
WSH	3135	JAIL	KING	MISDEMEANOR	FAXED	11/5/2015	0	0	15	.
WSH	3136	JAIL	KING	MISDEMEANOR	WITHDRAWN	11/5/2015	0	0	7	.
WSH	3137	JAIL	CLARK	MISDEMEANOR	FAXED	11/6/2015	3	3	11	.
WSH	3138	JAIL	KING	MISDEMEANOR	FAXED	11/6/2015	0	0	18	.
WSH	3139	JAIL	SNOHOMISH	FELONY	FAXED	11/6/2015	6	4	7	.

WSH	3140	JAIL	SNOHOMISH	MISDEMEANOR	FAXED	11/6/2015	0	0	.	24
WSH	3141	JAIL	KING	MISDEMEANOR	WITHDRAWN	11/6/2015	0	0	3	.
WSH	3142	JAIL	KING	MISDEMEANOR	WITHDRAWN	11/6/2015	0	0	7	.
WSH	3143	JAIL	GRAYS HARBOR	FELONY	FAXED	11/9/2015	1	1	11	.
WSH	3144	JAIL	KING	MISDEMEANOR	FAXED	11/9/2015	1	1	9	.
WSH	3145	JAIL	KING	MISDEMEANOR	FAXED	11/9/2015	0	0	10	.
WSH	3146	JAIL	PIERCE	MISDEMEANOR	FAXED	11/9/2015	1	1	4	.
WSH	3147	JAIL	PIERCE	MISDEMEANOR	FAXED	11/9/2015	1	1	9	.
WSH	3148	INPATIENT	KING	MISDEMEANOR	BED OFFERED	11/9/2015	1	1	.	21
WSH	3149	JAIL	KING	FELONY	FAXED	11/9/2015	0	0	.	21
WSH	3150	JAIL	KING	FELONY	FAXED	11/9/2015	1	1	.	21
WSH	3151	JAIL	KING	MISDEMEANOR	FAXED	11/10/2015	2	2	14	.
WSH	3152	JAIL	KING	MISDEMEANOR	FAXED	11/10/2015	3	3	20	.
WSH	3153	JAIL	SNOHOMISH	MISDEMEANOR	FAXED	11/10/2015	0	0	6	.
WSH	3154	JAIL	KING	FELONY	FAXED	11/10/2015	0	0	.	20
WSH	3155	JAIL	KING	FELONY	FAXED	11/10/2015	0	0	.	20
WSH	3156	JAIL	KING	FELONY	FAXED	11/10/2015	0	0	.	20
WSH	3157	JAIL	GRAYS HARBOR	MISDEMEANOR	FAXED	11/12/2015	1	1	6	.
WSH	3158	JAIL	GRAYS HARBOR	MISDEMEANOR	FAXED	11/12/2015	1	1	6	.
WSH	3159	JAIL	GRAYS HARBOR	MISDEMEANOR	FAXED	11/12/2015	1	1	7	.
WSH	3160	JAIL	KING	MISDEMEANOR	FAXED	11/12/2015	0	0	7	.
WSH	3161	JAIL	KING	MISDEMEANOR	FAXED	11/12/2015	0	0	7	.
WSH	3162	JAIL	KING	MISDEMEANOR	FAXED	11/12/2015	0	0	18	.
WSH	3163	JAIL	KITSAP	MISDEMEANOR	FAXED	11/12/2015	0	0	1	.
WSH	3164	JAIL	PIERCE	MISDEMEANOR	FAXED	11/12/2015	0	0	6	.
WSH	3165	INPATIENT	KING	FELONY CLASS B	BED OFFERED	11/12/2015	0	0	.	18
WSH	3166	INPATIENT	KING	FELONY CLASS B	BED OFFERED	11/12/2015	1	1	.	18

WSH	3167	JAIL	GRAYS HARBOR	FELONY	FAXED	11/12/2015	1	1	.	18
WSH	3168	JAIL	KING	FELONY	FAXED	11/12/2015	0	0	.	18
WSH	3169	JAIL	KING	FELONY	FAXED	11/12/2015	0	0	.	18
WSH	3170	JAIL	KING	FELONY	FAXED	11/12/2015	0	0	.	18
WSH	3171	JAIL	KING	FELONY	FAXED	11/12/2015	0	0	.	18
WSH	3172	JAIL	KING	MISDEMEANOR	FAXED	11/12/2015	0	0	.	18
WSH	3173	JAIL	KING	MISDEMEANOR	FAXED	11/12/2015	1	1	.	18
WSH	3174	JAIL	SKAGIT	FELONY	FAXED	11/12/2015	0	0	.	18
WSH	3175	JAIL	CLARK	FELONY	FAXED	11/13/2015	3	3	10	.
WSH	3176	JAIL	CLARK	MISDEMEANOR	FAXED	11/13/2015	0	0	7	.
WSH	3177	JAIL	KING	FELONY	FAXED	11/13/2015	0	0	11	.
WSH	3178	JAIL	KING	MISDEMEANOR	FAXED	11/13/2015	3	3	7	.
WSH	3179	JAIL	PIERCE	MISDEMEANOR	FAXED	11/13/2015	0	0	4	.
WSH	3180	JAIL	CLARK	MISDEMEANOR	INCOMPLETE	11/13/2015	0	0	.	17
WSH	3181	JAIL	KING	FELONY	INCOMPLETE	11/13/2015	0	0	.	17
WSH	3182	JAIL	MASON	FELONY	INCOMPLETE	11/13/2015	3	3	.	17
WSH	3183	JAIL	SKAGIT	FELONY	FAXED	11/13/2015	0	0	.	17
WSH	3184	JAIL	SNOHOMISH	MISDEMEANOR	FAXED	11/13/2015	0	0	11	.
WSH	3185	JAIL	SNOHOMISH	MISDEMEANOR	FAXED	11/13/2015	0	0	.	17
WSH	3186	JAIL	KING	MISDEMEANOR	WITHDRAWN	11/13/2015	0	0	4	.
WSH	3187	JAIL	KING	MISDEMEANOR	FAXED	11/16/2015	0	0	7	.
WSH	3188	JAIL	KING	MISDEMEANOR	FAXED	11/16/2015	1	1	.	14
WSH	3189	JAIL	KING	MISDEMEANOR	FAXED	11/16/2015	1	1	.	14
WSH	3190	JAIL	KING	MISDEMEANOR	WITHDRAWN	11/16/2015	0	0	.	14
WSH	3191	JAIL	KING	MISDEMEANOR	FAXED	11/16/2015	0	0	.	14
WSH	3192	JAIL	KING	MISDEMEANOR	FAXED	11/16/2015	1	1	.	14
WSH	3193	JAIL	SNOHOMISH	MISDEMEANOR	FAXED	11/16/2015	0	0	.	14
WSH	3194	JAIL	KING	MISDEMEANOR	FAXED	11/17/2015	2	2	7	.
WSH	3195	JAIL	CLARK	MISDEMEANOR	WITHDRAWN	11/17/2015	3	3	.	13
WSH	3196	JAIL	KING	FELONY	WITHDRAWN	11/17/2015	0	0	.	13

WSH	3197	JAIL	KING	MISDEMEANOR	FAXED	11/17/2015	1	1	.	13
WSH	3198	JAIL	KING	MISDEMEANOR	FAXED	11/17/2015	1	1	.	13
WSH	3199	JAIL	PIERCE	MISDEMEANOR	INCOMPLETE	11/17/2015	3	3	.	13
WSH	3200	JAIL	SNOHOMISH	MISDEMEANOR	FAXED	11/17/2015	0	0	.	13
WSH	3201	JAIL	PIERCE	MISDEMEANOR	FAXED	11/18/2015	0	1	6	.
WSH	3202	INPATIENT	KING	FELONY CLASS B	BED OFFERED	11/18/2015	1	1	.	12
WSH	3203	JAIL	KING	MISDEMEANOR	FAXED	11/18/2015	0	0	.	12
WSH	3204	JAIL	CLARK	FELONY	FAXED	11/19/2015	0	0	5	.
WSH	3205	JAIL	CLARK	FELONY	FAXED	11/19/2015	1	1	6	.
WSH	3206	JAIL	GRAYS HARBOR	MISDEMEANOR	FAXED	11/19/2015	1	1	6	.
WSH	3207	JAIL	COWLITZ	FELONY	FAXED	11/19/2015	4	4	.	11
WSH	3208	JAIL	KING	FELONY	FAXED	11/19/2015	1	1	.	11
WSH	3209	JAIL	KING	MISDEMEANOR	FAXED	11/19/2015	1	1	.	11
WSH	3210	JAIL	SNOHOMISH	FELONY	INCOMPLETE	11/19/2015	0	0	.	11
WSH	3211	JAIL	SNOHOMISH	MISDEMEANOR	FAXED	11/19/2015	0	0	.	11
WSH	3212	JAIL	THURSTON	MISDEMEANOR	FAXED	11/19/2015	1	1	.	11
WSH	3213	JAIL	WHATCOM	FELONY	FAXED	11/19/2015	1	1	.	11
WSH	3214	JAIL	WHATCOM	FELONY	FAXED	11/19/2015	4	4	.	11
WSH	3215	JAIL	CLARK	FELONY	FAXED	11/20/2015	0	0	5	.
WSH	3216	JAIL	KITSAP	MISDEMEANOR	FAXED	11/20/2015	0	0	4	.
WSH	3217	JAIL	KING	FELONY	FAXED	11/20/2015	3	3	.	10
WSH	3218	JAIL	KING	MISDEMEANOR	FAXED	11/20/2015	3	3	10	.
WSH	3219	JAIL	KING	MISDEMEANOR	WITHDRAWN	11/20/2015	0	0	.	10
WSH	3220	JAIL	KING	MISDEMEANOR	FAXED	11/20/2015	0	0	.	10
WSH	3221	JAIL	KING	MISDEMEANOR	FAXED	11/23/2015	1	1	7	.
WSH	3222	JAIL	CLARK	FELONY	FAXED	11/23/2015	1	1	.	7
WSH	3223	JAIL	GRAYS HARBOR	MISDEMEANOR	FAXED	11/23/2015	0	0	.	7
WSH	3224	JAIL	KING	FELONY	FAXED	11/23/2015	1	1	.	7
WSH	3225	JAIL	KING	FELONY	FAXED	11/23/2015	0	0	.	7

WSH	3226	JAIL	KING	MISDEMEANOR	WITHDRAWN	11/23/2015	0	0	.	7
WSH	3227	JAIL	KING	MISDEMEANOR	FAXED	11/23/2015	0	0	.	7
WSH	3228	JAIL	KING	MISDEMEANOR	WITHDRAWN	11/23/2015	0	0	.	7
WSH	3229	JAIL	KING	MISDEMEANOR	WITHDRAWN	11/23/2015	0	0	.	7
WSH	3230	JAIL	LEWIS	FELONY	FAXED	11/23/2015	0	0	2	.
WSH	3231	JAIL	PIERCE	MISDEMEANOR	WITHDRAWN	11/23/2015	0	0	2	.
WSH	3232	JAIL	KING	FELONY	FAXED	11/24/2015	0	0	.	6
WSH	3233	JAIL	KING	MISDEMEANOR	FAXED	11/24/2015	0	0	.	6
WSH	3234	JAIL	KING	MISDEMEANOR	FAXED	11/24/2015	0	0	.	6
WSH	3235	JAIL	PIERCE	MISDEMEANOR	FAXED	11/24/2015	0	0	.	6
WSH	3236	JAIL	KING	MISDEMEANOR	FAXED	11/25/2015	0	0	.	5
WSH	3237	JAIL	KITSAP	MISDEMEANOR	FAXED	11/25/2015	0	0	.	5
WSH	3238	JAIL	LEWIS	MISDEMEANOR	FAXED	11/25/2015	0	0	.	5
WSH	3239	JAIL	KING	FELONY	INCOMPLETE	11/27/2015	0	0	.	3
WSH	3348	JAIL	CLALLAM	MISDEMEANOR	FAXED	10/13/2015	.	.	.	48
WSH	3349	JAIL	KING	MISDEMEANOR	INCOMPLETE	11/6/2015	0	0	.	24
WSH	3350	JAIL	CLARK	FELONY	FAXED	11/19/2015	1	1	.	11
WSH	3351	JAIL	KITSAP	FELONY	FAXED	11/20/2015	0	12	5	.
WSH	3352	JAIL	SNOHOMISH	MISDEMEANOR	FAXED	11/20/2015	.	.	.	10
WSH	3353	JAIL	KING	FELONY	FAXED	11/23/2015	.	.	.	7
WSH	3354	INPATIENT	PIERCE	FELONY CLASS C	BED OFFERED	11/23/2015	0	0	.	7
WSH	3355	JAIL	LEWIS	MISDEMEANOR	FAXED	11/25/2015	0	0	.	5
WSH	3356	JAIL	THURSTON	MISDEMEANOR	FAXED	11/25/2015	.	.	.	5
WSH	3357	INPATIENT	KING	GROSS MISDEMEANOR	BED OFFERED	11/25/2015	0	0	.	5
WSH	3358	JAIL	KING	MISDEMEANOR	FAXED	11/25/2015	2	2	.	5
WSH	3359	JAIL	THURSTON	MISDEMEANOR	FAXED	11/25/2015	5	5	.	5
WSH	3360	INPATIENT	CLARK	FELONY CLASS A	BED OFFERED	11/25/2015	5	5	.	5
WSH	3361	JAIL	PIERCE	MISDEMEANOR	WITHDRAWN	11/30/2015	0	0	.	0
WSH	3362	JAIL	KING	MISDEMEANOR	WITHDRAWN	11/30/2015	.	.	.	0
WSH	3363	JAIL	THURSTON	MISDEMEANOR	FAXED	11/30/2015	0	0	.	0

WSH	3364	JAIL	THURSTON	MISDEMEANOR	FAXED	11/30/2015	0	0	.	0
WSH	3365	JAIL	THURSTON	MISDEMEANOR	FAXED	11/30/2015	.	.	.	0
WSH	3366	JAIL	MASON	MISDEMEANOR	FAXED	11/30/2015	.	.	.	0
WSH	3367	JAIL	KING	MISDEMEANOR	TIC	11/30/2015	0	0	.	0
WSH	3368	JAIL	KING	FELONY	FAXED	11/30/2015	0	0	.	0
WSH	3369	JAIL	KING	MISDEMEANOR	FAXED	11/30/2015	0	0	.	0
WSH	3370	JAIL	KING	MISDEMEANOR	FAXED	11/30/2015	.	.	.	0
WSH	3371	JAIL	KING	MISDEMEANOR	FAXED	11/30/2015	.	.	.	0
WSH	3372	JAIL	KING	MISDEMEANOR	FAXED	11/30/2015	0	0	.	0
WSH	3373	JAIL	SNOHOMISH	FELONY	FAXED	11/30/2015	0	0	.	0
WSH	3374	JAIL	KING	FELONY	FAXED	11/30/2015	.	.	.	0
WSH	3375	JAIL	KING	FELONY	FAXED	11/30/2015	0	0	.	0
WSH	3376	JAIL	KING	MISDEMEANOR	INCOMPLETE	11/30/2015	.	.	.	0
ESH	2218	JAIL	GRANT	FELONY	FAX	8/17/2015	1	1	81	.
ESH	2227	JAIL	GRANT	FELONY	FAX	8/24/2015	2	4	71	.
ESH	2228	JAIL	FRANKLIN	FELONY	FAX	8/25/2015	2	3	77	.
ESH	2328	JAIL	YAKIMA	MISDEMEANOR	FAX	8/26/2015	28	33	.	96
ESH	2531	JAIL	FRANKLIN	FELONY	FAX	9/1/2015	14	16	.	90
ESH	2534	INPATIENT	SPOKANE	FELONY	ADMISSION	9/2/2015	21	26	.	89
ESH	2540	JAIL	SPOKANE	FELONY	FAX	9/4/2015	5	10	60	.
ESH	2545	JAIL	CHELAN	FELONY	FAX	9/10/2015	1	5	54	.
ESH	2553	JAIL	SPOKANE	MISDEMEANOR	FAX	9/16/2015	0	2	51	.
ESH	2554	JAIL	FRANKLIN	MISDEMEANOR	FAX	9/16/2015	0	2	51	.
ESH	2556	JAIL	FRANKLIN	MISDEMEANOR	FAX	9/17/2015	0	4	63	.
ESH	2558	JAIL	SPOKANE	FELONY	FAX	9/17/2015	5	6	47	.
ESH	2561	INPATIENT	ADAMS	FELONY	ADMISSION	9/18/2015	3	4	.	73
ESH	2564	JAIL	SPOKANE	FELONY	FAX	9/21/2015	1	2	52	.
ESH	2565	JAIL	SPOKANE	FELONY	FAX	9/21/2015	1	2	46	.
ESH	2568	JAIL	SPOKANE	FELONY	FAX	9/22/2015	1	2	51	.
ESH	2569	JAIL	STEVENS	FELONY	FAX	9/22/2015	1	1	52	.
ESH	2570	JAIL	YAKIMA	FELONY	FAX	9/22/2015	2	6	.	69

ESH	2574	JAIL	CHELAN	FELONY	FAX	9/23/2015	0	1	51	.
ESH	2575	JAIL	OKANOGAN	FELONY	FAX	9/23/2015	0	6	57	.
ESH	2580	JAIL	SPOKANE	MISDEMEANOR	FAX	9/28/2015	0	0	.	63
ESH	2581	JAIL	GRANT	FELONY	FAX	9/28/2015	1	4	46	.
ESH	2582	JAIL	GRANT	FELONY	FAX	9/29/2015	0	1	44	.
ESH	2583	JAIL	BENTON	FELONY	FAX	9/30/2015	0	0	37	.
ESH	2895	JAIL	SPOKANE	FELONY	FAX	9/16/2015	19	21	49	.
ESH	2899	INPATIENT	SPOKANE	FELONY	ADMISSION	9/30/2015	1	2	.	61
ESH	2900	INPATIENT	PEND OREILLE	FELONY	ADMISSION	10/1/2015	1	29	.	60
ESH	2901	JAIL	SPOKANE	FELONY	FAX	10/6/2015	0	1	29	.
ESH	2902	INPATIENT	YAKIMA	FELONY	ADMISSION	10/7/2015	1	8	.	54
ESH	2903	JAIL	BENTON	FELONY	FAX	10/7/2015	1	1	.	54
ESH	2905	JAIL	CHELAN	FELONY	FAX	10/12/2015	1	7	42	.
ESH	2906	JAIL	CHELAN	MISDEMEANOR	FAX	10/12/2015	1	3	38	.
ESH	2909	JAIL	YAKIMA	FELONY	FAX	10/13/2015	0	0	.	48
ESH	2912	JAIL	SPOKANE	FELONY	FAX	10/14/2015	1	1	30	.
ESH	2914	JAIL	YAKIMA	MISDEMEANOR	FAX	10/19/2015	0	14	.	42
ESH	2915	JAIL	ASOTIN	FELONY	ADMISSION	10/20/2015	0	8	.	41
ESH	2916	JAIL	FRANKLIN	MISDEMEANOR	FAX	10/20/2015	0	8	36	.
ESH	2916	JAIL	FRANKLIN	MISDEMEANOR	FAX	10/20/2015	0	8	36	11
ESH	2917	JAIL	OKANOGAN	FELONY	FAX	10/20/2015	0	14	.	41
ESH	2918	JAIL	BENTON	FELONY	FAX	10/21/2015	0	7	.	40
ESH	2919	JAIL	BENTON	FELONY	FAX	10/21/2015	0	7	.	40
ESH	2924	JAIL	BENTON	FELONY	FAX	10/22/2015	0	0	.	39
ESH	2925	JAIL	GRANT	FELONY	FAX	10/22/2015	0	6	.	39
ESH	2926	JAIL	OKANOGAN	FELONY	FAX	10/22/2015	0	6	.	39
ESH	2927	JAIL	PEND OREILLE	FELONY	FAX	10/22/2015	0	6	.	39
ESH	2928	INPATIENT	SPOKANE	MISDEMEANOR	ADMISSION	10/28/2015	0	0	12	.
ESH	2929	JAIL	BENTON	MISDEMEANOR	FAX	10/28/2015	0	6	.	33
ESH	2930	JAIL	CHELAN	FELONY	FAX	10/28/2015	0	6	.	33



ESH	2931	JAIL	FRANKLIN	MISDEMEANOR	FAX	10/28/2015	0	6	.	33
ESH	2932	JAIL	OKANOGAN	FELONY	FAX	10/28/2015	0	6	.	33
ESH	2933	JAIL	YAKIMA	MISDEMEANOR	FAX	10/28/2015	0	6	15	.
ESH	2934	JAIL	CHELAN	FELONY	FAX	10/29/2015	1	6	.	32
ESH	2935	JAIL	OKANOGAN	MISDEMEANOR	FAX	10/30/2015	0	4	.	31
ESH	2936	JAIL	YAKIMA	FELONY	FAX	10/30/2015	0	4	.	31
ESH	3055	JAIL	ASOTIN	MISDEMEANOR	FAX	10/30/2015	0	13	.	31
ESH	3242	INPATIENT	CHELAN	MISDEMEANOR	ADMISSION	10/15/2015	0	4	.	46
ESH	3243	INPATIENT	FRANKLIN	FELONY	ADMISSION	10/20/2015	0	8	.	41
ESH	3245	JAIL	CHELAN	MISDEMEANOR	FAX	11/3/2015	22	22	.	27
ESH	3246	JAIL	GRANT	FELONY	FAX	11/3/2015	0	9	.	27
ESH	3247	JAIL	SPOKANE	FELONY	FAX	11/3/2015	1	16	14	.
ESH	3248	JAIL	BENTON	MISDEMEANOR	FAX	11/4/2015	0	2	.	26
ESH	3249	JAIL	OKANOGAN	MISDEMEANOR	FAX	11/4/2015	0	0	.	26
ESH	3251	JAIL	STEVENS	FELONY	FAX	11/4/2015	0	8	.	26
ESH	3252	JAIL	SPOKANE	MISDEMEANOR	FAX	11/5/2015	0	7	.	25
ESH	3253	JAIL	YAKIMA	MISDEMEANOR	FAX	11/5/2015	4	8	.	25
ESH	3254	JAIL	GRANT	FELONY	FAX	11/9/2015	0	4	.	21
ESH	3255	JAIL	YAKIMA	FELONY	FAX	11/9/2015	0	4	.	21
ESH	3256	JAIL	YAKIMA	MISDEMEANOR	FAX	11/10/2015	0	3	.	20
ESH	3257	INPATIENT	YAKIMA	FELONY	ADMISSION	11/12/2015	4	8	.	18
ESH	3258	JAIL	SPOKANE	FELONY	FAX	11/12/2015	5	11	.	18
ESH	3259	JAIL	SPOKANE	MISDEMEANOR	FAX	11/12/2015	1	4	.	18
ESH	3260	JAIL	FRANKLIN	MISDEMEANOR	FAX	11/16/2015	1	8	.	14
ESH	3261	JAIL	YAKIMA	MISDEMEANOR	FAX	11/16/2015	0	7	.	14
ESH	3262	JAIL	CHELAN	MISDEMEANOR	FAX	11/17/2015	1	6	.	13
ESH	3263	JAIL	YAKIMA	MISDEMEANOR	FAX	11/17/2015	2	2	.	13
ESH	3264	JAIL	CHELAN	MISDEMEANOR	FAX	11/18/2015	2	2	.	12
ESH	3265	JAIL	YAKIMA	MISDEMEANOR	FAX	11/18/2015	0	0	.	12
ESH	3266	JAIL	BENTON	FELONY	FAX	11/19/2015	1	5	.	11
ESH	3267	JAIL	SPOKANE	FELONY	FAX	11/19/2015	0	5	.	11

ESH	3268	JAIL	SPOKANE	MISDEMEANOR	FAX	11/23/2015	0	1	.	7
ESH	3269	JAIL	YAKIMA	MISDEMEANOR	FAX	11/23/2015	0	1	.	7
ESH	3270	JAIL	CHELAN	MISDEMEANOR	FAX	11/24/2015	0	0	.	6
ESH	3272	JAIL	YAKIMA	MISDEMEANOR	FAX	11/24/2015	0	1	.	6
ESH	3273	JAIL	BENTON	FELONY	FAX	11/25/2015	0	.	.	5
ESH	3341	INPATIENT	FRANKLIN	FELONY	ADMISSION	8/10/2015	0	7	86	.
ESH	3342	INPATIENT	YAKIMA	MISDEMEANOR	ADMISSION	11/30/2015	0	.	.	0
ESH	3377	JAIL	YAKIMA	MISDEMEANOR	FAX	8/19/2015	42	42	.	103
ESH	3379	JAIL	SPOKANE	FELONY	FAX	9/22/2015	7	8	51	.
ESH	3380	JAIL	BENTON	FELONY	FAX	10/15/2015	0	5	.	46
ESH	3381	JAIL	CHELAN	MISDEMEANOR	FAX	10/20/2015	0	10	.	41
ESH	3382	JAIL	GRANT	MISDEMEANOR	FAX	10/27/2015	3	3	.	34
ESH	3383	JAIL	SPOKANE	FELONY	FAX	11/2/2015	.	.	.	28
ESH	3384	JAIL	YAKIMA	MISDEMEANOR	FAX	11/9/2015	0	.	.	21
ESH	3385	JAIL	BENTON	FELONY	FAX	11/19/2015	1	11	.	11
ESH	3386	JAIL	SPOKANE	FELONY	FAX	11/25/2015	.	.	.	5
ESH	3387	INPATIENT	CHELAN	FELONY	ADMISSION	11/30/2015	.	.	.	0
ESH	3388	JAIL	SPOKANE	FELONY	FAX	11/30/2015	.	.	.	0
ESH	3389	JAIL	OKANOGAN	FELONY	FAX	11/30/2015	.	.	.	0

## **Appendix B: Class Member--Restoration Information for November 2015**

Hospital	Class Member	County	Offense	Completion Method or Incomplete	Order Signed Date	Number of days from signed order to:			
						Order Received	Discovery Received	Complete	Incomplete: End of Reporting Period
WSH	2288	WHATCOM	FELONY CLASS C	BED OFFERED	8/21/2015	3	3	.	101
WSH	2603	KING	FELONY CLASS A	BED OFFERED	9/9/2015	1	1	55	.
WSH	2612	MASON	FELONY CLASS C	BED OFFERED	9/14/2015	2	2	49	.
WSH	2616	KITSAP	FELONY CLASS C	INCOMPLETE	9/16/2015	0	0	.	75
WSH	2617	PIERCE	FELONY CLASS B	BED OFFERED	9/16/2015	1	1	51	.
WSH	2621	LEWIS	FELONY CLASS C	BED OFFERED	9/17/2015	1	1	53	.
WSH	2623	SNOHOMISH	FELONY CLASS C	BED OFFERED	9/17/2015	0	0	50	.
WSH	2625	PACIFIC	FELONY CLASS C	BED OFFERED	9/18/2015	4	4	49	.
WSH	2627	KING	FELONY CLASS C	BED OFFERED	9/21/2015	0	0	53	.
WSH	2630	THURSTON	FELONY CLASS B	BED OFFERED	9/21/2015	1	1	65	.
WSH	2631	CLARK	FELONY CLASS B	BED OFFERED	9/22/2015	1	1	.	69
WSH	2635	KING	MISDEMEANOR	BED OFFERED	9/22/2015	0	0	.	69
WSH	2639	KING	FELONY CLASS B	BED OFFERED	9/23/2015	1	1	47	.
WSH	2640	KING	FELONY CLASS C	CANCELLED	9/23/2015	1	1	62	.
WSH	2643	GRAYS HARBOR	FELONY CLASS C	BED OFFERED	9/24/2015	1	1	50	.
WSH	2645	PACIFIC	FELONY CLASS C	BED OFFERED	9/25/2015	3	3	66	.
WSH	2646	PIERCE	FELONY CLASS B	BED OFFERED	9/25/2015	3	3	.	66
WSH	2648	GRAYS HARBOR	FELONY CLASS C	BED OFFERED	9/28/2015	1	1	53	.
WSH	2942	SNOHOMISH	MISDEMEANOR	INCOMPLETE	9/21/2015	24	24	.	70
WSH	2943	CLARK	FELONY CLASS C	BED OFFERED	9/23/2015	2	2	47	.
WSH	2944	PIERCE	FELONY CLASS C	BED OFFERED	9/23/2015	2	2	58	.
WSH	2946	PIERCE	FELONY CLASS B	BED OFFERED	9/24/2015	1	1	61	.

WSH	2948	ISLAND	FELONY CLASS C	BED OFFERED	9/28/2015	1	1	52	.
WSH	2949	KING	FELONY CLASS C	BED OFFERED	9/28/2015	0	0	57	.
WSH	2954	PIERCE	FELONY CLASS C	BED OFFERED	9/30/2015	1	1	55	.
WSH	2955	PIERCE	FELONY CLASS C	BED OFFERED	9/30/2015	1	1	55	.
WSH	2956	KING	FELONY CLASS B	BED OFFERED	10/1/2015	0	0	.	60
WSH	2957	KING	FELONY CLASS B	BED OFFERED	10/2/2015	0	0	.	59
WSH	2958	MASON	FELONY CLASS B	BED OFFERED	10/2/2015	3	3	.	59
WSH	2959	PIERCE	FELONY CLASS A	BED OFFERED	10/2/2015	3	3	.	59
WSH	2960	PIERCE	FELONY CLASS B	BED OFFERED	10/2/2015	3	3	.	59
WSH	2961	CLARK	FELONY CLASS A	BED OFFERED	10/5/2015	2	2	.	56
WSH	2962	COWLITZ	FELONY CLASS A	BED OFFERED	10/5/2015	1	1	.	56
WSH	2963	KING	FELONY CLASS C	BED OFFERED	10/5/2015	0	0	56	.
WSH	2964	THURSTON	FELONY CLASS B	BED OFFERED	10/5/2015	1	1	.	56
WSH	2966	CLARK	FELONY CLASS C	BED OFFERED	10/6/2015	1	1	55	.
WSH	2967	KING	FELONY CLASS B	BED OFFERED	10/6/2015	1	1	.	55
WSH	2969	KING	FELONY CLASS B	BED OFFERED	10/7/2015	1	1	.	54
WSH	2973	CLARK	FELONY CLASS C	CANCELLED	10/8/2015	0	0	.	53
WSH	2974	KING	FELONY CLASS B	BED OFFERED	10/8/2015	1	1	.	53
WSH	2975	LEWIS	FELONY CLASS C	BED OFFERED	10/8/2015	0	0	.	53
WSH	2977	PIERCE	FELONY CLASS C	CANCELLED	10/8/2015	1	8	42	.
WSH	2980	GRAYS HARBOR	FELONY CLASS C	BED OFFERED	10/12/2015	2	2	.	49
WSH	2982	KING	FELONY CLASS A	BED OFFERED	10/13/2015	0	0	.	48
WSH	2983	KING	FELONY CLASS B	BED OFFERED	10/13/2015	0	0	.	48
WSH	2984	MASON	FELONY CLASS C	BED OFFERED	10/13/2015	17	17	.	48
WSH	2985	CLARK	FELONY CLASS B	BED OFFERED	10/14/2015	1	1	.	47
WSH	2986	KING	FELONY CLASS A	BED OFFERED	10/14/2015	0	0	.	47
WSH	2988	PIERCE	FELONY CLASS C	BED OFFERED	10/19/2015	1	1	.	42
WSH	2990	KING	FELONY CLASS B	BED OFFERED	10/20/2015	0	0	.	41
WSH	2991	PIERCE	FELONY CLASS B	BED OFFERED	10/21/2015	2	2	.	40
WSH	2992	PIERCE	FELONY CLASS B	BED OFFERED	10/21/2015	2	2	.	40

WSH	2993	PIERCE	FELONY CLASS B	BED OFFERED	10/21/2015	2	2	.	40
WSH	2994	PIERCE	FELONY CLASS C	BED OFFERED	10/21/2015	2	2	.	40
WSH	2995	PIERCE	FELONY CLASS C	BED OFFERED	10/21/2015	2	2	.	40
WSH	3000	KING	MISDEMEANOR	INCOMPLETE	10/23/2015	0	0	.	38
WSH	3002	CLARK	MISDEMEANOR	BED OFFERED	10/26/2015	1	1	9	.
WSH	3003	KING	FELONY CLASS C	INCOMPLETE	10/26/2015	1	1	.	35
WSH	3004	THURSTON	FELONY CLASS B	BED OFFERED	10/26/2015	1	1	.	35
WSH	3005	THURSTON	FELONY CLASS C	BED OFFERED	10/26/2015	1	1	.	35
WSH	3006	THURSTON	MISDEMEANOR	BED OFFERED	10/26/2015	1	1	10	.
WSH	3007	KING	FELONY CLASS B	BED OFFERED	10/27/2015	0	0	.	34
WSH	3008	KING	FELONY CLASS C	BED OFFERED	10/27/2015	0	0	.	34
WSH	3010	KING	FELONY CLASS C	BED OFFERED	10/28/2015	0	0	.	33
WSH	3011	PIERCE	FELONY CLASS B	BED OFFERED	10/28/2015	0	0	.	33
WSH	3012	PIERCE	FELONY CLASS C	BED OFFERED	10/28/2015	0	0	.	33
WSH	3013	LEWIS	FELONY CLASS C	BED OFFERED	10/29/2015	1	1	.	32
WSH	3014	PIERCE	FELONY CLASS A	BED OFFERED	10/29/2015	0	0	.	32
WSH	3015	SKAGIT	FELONY CLASS C	CANCELLED	10/29/2015	1	1	.	32
WSH	3056	PIERCE	FELONY CLASS C	BED OFFERED	9/16/2015	1	6	48	.
WSH	3057	PIERCE	FELONY CLASS C	BED OFFERED	9/23/2015	1	1	44	.
WSH	3067	CLARK	FELONY CLASS B	CANCELLED	10/27/2015	8	8	.	34
WSH	3068	PIERCE	FELONY CLASS C	BED OFFERED	10/28/2015	1	1	5	.
WSH	3069	THURSTON	MISDEMEANOR	BED OFFERED	10/30/2015	3	3	6	.
WSH	3275	PIERCE	FELONY CLASS C	BED OFFERED	9/16/2015	1	6	48	.
WSH	3276	PIERCE	FELONY CLASS C	BED OFFERED	9/23/2015	1	1	44	.
WSH	3277	PIERCE	FELONY CLASS C	BED OFFERED	9/28/2015	1	1	57	.
WSH	3279	CLARK	FELONY CLASS B	CANCELLED	10/27/2015	8	8	.	34
WSH	3280	PIERCE	FELONY CLASS C	BED OFFERED	10/28/2015	1	1	5	.
WSH	3281	THURSTON	MISDEMEANOR	BED OFFERED	10/30/2015	3	3	6	.
WSH	3282	KING	FELONY CLASS B	INCOMPLETE	11/2/2015	1	1	.	28
WSH	3283	KING	FELONY CLASS C	BED OFFERED	11/2/2015	0	0	.	28

WSH	3284	KING	MISDEMEANOR	BED OFFERED	11/2/2015	1	1	14	.
WSH	3285	KITSAP	FELONY CLASS B	BED OFFERED	11/2/2015	0	0	3	.
WSH	3286	PIERCE	FELONY CLASS C	BED OFFERED	11/2/2015	1	1	.	28
WSH	3287	KING	FELONY CLASS A	INCOMPLETE	11/4/2015	0	0	.	26
WSH	3288	KING	FELONY CLASS B	INCOMPLETE	11/4/2015	0	0	.	26
WSH	3289	KING	FELONY CLASS C	BED OFFERED	11/4/2015	0	0	.	26
WSH	3290	KING	MISDEMEANOR	BED OFFERED	11/4/2015	1	1	14	.
WSH	3291	PIERCE	FELONY CLASS A	INCOMPLETE	11/4/2015	2	2	.	26
WSH	3292	PIERCE	FELONY CLASS B	BED OFFERED	11/4/2015	1	1	.	26
WSH	3293	PIERCE	FELONY CLASS C	BED OFFERED	11/4/2015	2	2	.	26
WSH	3294	PIERCE	FELONY CLASS C	BED OFFERED	11/4/2015	1	1	8	.
WSH	3295	THURSTON	FELONY CLASS B	INCOMPLETE	11/4/2015	0	0	.	26
WSH	3296	CLARK	FELONY CLASS C	INCOMPLETE	11/5/2015	0	0	.	25
WSH	3297	CLALLAM	FELONY CLASS C	INCOMPLETE	11/6/2015	0	0	.	24
WSH	3298	KING	MISDEMEANOR	BED OFFERED	11/6/2015	0	0	10	.
WSH	3299	KITSAP	MISDEMEANOR	BED OFFERED	11/6/2015	0	0	13	.
WSH	3300	ISLAND	FELONY CLASS B	BED OFFERED	11/9/2015	1	1	10	.
WSH	3301	KING	FELONY CLASS B	INCOMPLETE	11/9/2015	3	3	.	21
WSH	3302	PIERCE	FELONY CLASS C	INCOMPLETE	11/10/2015	2	2	.	20
WSH	3303	SNOHOMISH	FELONY CLASS C	BED OFFERED	11/10/2015	0	0	3	.
WSH	3304	CLARK	FELONY CLASS B	BED OFFERED	11/13/2015	0	0	0	.
WSH	3305	SKAGIT	FELONY CLASS C	INCOMPLETE	11/13/2015	0	0	.	17
WSH	3306	KING	MISDEMEANOR	BED OFFERED	11/16/2015	0	0	.	14
WSH	3307	PIERCE	FELONY CLASS C	INCOMPLETE	11/16/2015	1	1	.	14
WSH	3308	PIERCE	FELONY CLASS C	BED OFFERED	11/16/2015	0	0	0	.
WSH	3309	CLARK	FELONY CLASS C	INCOMPLETE	11/17/2015	0	0	.	13
WSH	3310	CLARK	FELONY CLASS C	INCOMPLETE	11/17/2015	1	1	.	13
WSH	3311	KING	FELONY CLASS B	INCOMPLETE	11/17/2015	0	0	.	13
WSH	3312	SNOHOMISH	FELONY CLASS C	INCOMPLETE	11/17/2015	0	0	.	13
WSH	3313	CLARK	FELONY CLASS C	INCOMPLETE	11/18/2015	1	1	.	12

WSH	3314	KING	MISDEMEANOR	BED OFFERED	11/18/2015	1	1	.	12
WSH	3315	SNOHOMISH	FELONY CLASS B	INCOMPLETE	11/18/2015	1	1	.	12
WSH	3316	KING	FELONY CLASS A	INCOMPLETE	11/19/2015	1	1	.	11
WSH	3317	KING	FELONY CLASS B	INCOMPLETE	11/19/2015	0	0	.	11
WSH	3318	SNOHOMISH	FELONY CLASS C	INCOMPLETE	11/19/2015	0	0	.	11
WSH	3319	PIERCE	FELONY CLASS B	INCOMPLETE	11/20/2015	0	0	.	10
WSH	3320	SNOHOMISH	FELONY CLASS B	BED OFFERED	11/20/2015	0	0	5	.
WSH	3321	GRAYS HARBOR	FELONY CLASS C	INCOMPLETE	11/23/2015	1	1	.	7
WSH	3322	PIERCE	FELONY CLASS A	INCOMPLETE	11/23/2015	0	0	.	7
WSH	3323	PIERCE	FELONY CLASS B	BED OFFERED	11/23/2015	0	0	0	.
WSH	3324	PIERCE	FELONY CLASS B	BED OFFERED	11/23/2015	0	0	7	.
WSH	3390	PIERCE	FELONY CLASS A	BED OFFERED	9/25/2015	0	14	.	66
WSH	3391	PIERCE	FELONY CLASS C	CANCELLED	11/13/2015	.	.	.	17
WSH	3392	PIERCE	FELONY	INCOMPLETE	11/18/2015	1	0	.	12
WSH	3393	PIERCE	FELONY CLASS C	INCOMPLETE	11/18/2015	1	1	.	12
WSH	3394	PIERCE	FELONY CLASS C	INCOMPLETE	11/19/2015	4	.	.	11
WSH	3395	CLARK	FELONY CLASS C	INCOMPLETE	11/20/2015	3	3	.	10
WSH	3396	SNOHOMISH	FELONY CLASS A	INCOMPLETE	11/23/2015	0	0	.	7
WSH	3397	PIERCE	MISDEMEANOR	BED OFFERED	11/24/2015	1	.	.	6
WSH	3398	PIERCE	FELONY CLASS B	INCOMPLETE	11/24/2015	1	1	.	6
WSH	3399	PIERCE	FELONY CLASS B	BED OFFERED	11/25/2015	5	5	.	5
WSH	3400	KITSAP	GROSS MISDEMEANOR	BED OFFERED	11/25/2015	.	.	.	5
WSH	3401	PIERCE	MISDEMEANOR	BED OFFERED	11/25/2015	.	.	.	5
WSH	3402	KING	FELONY CLASS B	INCOMPLETE	11/25/2015	0	0	.	5
WSH	3403	PIERCE	FELONY CLASS B	INCOMPLETE	11/25/2015	.	.	.	5
WSH	3404	PIERCE	FELONY CLASS A	INCOMPLETE	11/30/2015	0	0	.	0
WSH	3405	THURSTON	FELONY CLASS C	INCOMPLETE	11/30/2015	0	0	.	0
ESH	1995	FRANKLIN	FELONY	ADMISSION	7/28/2015	3	8	97	.
ESH	2307	SPOKANE	FELONY	ADMISSION	7/21/2015	15	21	111	.

ESH	2309	WALLA WALLA	FELONY	ADMISSION	8/4/2015	1	7	93	.
ESH	2311	CHELAN	FELONY	ADMISSION	8/5/2015	1	6	91	.
ESH	2335	CHELAN	FELONY	ADMISSION	8/28/2015	3	4	.	94
ESH	2654	OKANOGAN	FELONY	ADMISSION	9/4/2015	0	4	.	87
ESH	2656	BENTON	FELONY	ADMISSION	9/8/2015	15	17	.	83
ESH	2657	WALLA WALLA	FELONY	ADMISSION	9/8/2015	3	7	.	83
ESH	2658	SPOKANE	FELONY	ADMISSION	9/11/2015	0	4	.	80
ESH	2663	BENTON	MISDEMEANOR	ADMISSION	9/25/2015	0	3	.	66
ESH	2664	CHELAN	FELONY	ADMISSION	9/28/2015	0	1	.	63
ESH	2665	BENTON	FELONY	ADMISSION	9/29/2015	0	2	.	62
ESH	3020	BENTON	FELONY	ADMISSION	9/24/2015	0	1	.	67
ESH	3020	BENTON	FELONY	ADMISSION	9/24/2015	0	1	.	67
ESH	3021	SPOKANE	FELONY	ADMISSION	10/8/2015	0	0	.	53
ESH	3023	YAKIMA	FELONY	ADMISSION	10/14/2015	5	5	.	47
ESH	3024	YAKIMA	FELONY	ADMISSION	10/20/2015	3	3	.	41
ESH	3025	BENTON	FELONY	ADMISSION	10/21/2015	0	0	.	40
ESH	3026	BENTON	FELONY	ADMISSION	10/21/2015	0	0	.	40
ESH	3326	YAKIMA	FELONY	ADMISSION	11/2/2015	2	2	.	28
ESH	3327	BENTON	FELONY	ADMISSION	11/5/2015	0	1	.	25
ESH	3328	SPOKANE	FELONY	ADMISSION	11/5/2015	0	0	.	25
ESH	3329	BENTON	FELONY	ADMISSION	11/12/2015	1	4	.	18
ESH	3330	GRANT	FELONY	ADMISSION	11/17/2015	0	0	.	13
ESH	3331	STEVENS	FELONY	ADMISSION	11/17/2015	0	.	.	13
ESH	3332	SPOKANE	FELONY	ADMISSION	11/20/2015	0	.	.	10
ESH	3333	BENTON	FELONY	ADMISSION	11/25/2015	0	5	.	5
ESH	3338	YAKIMA	MISDEMEANOR	ADMISSION	8/25/2015	0	1	92	.
ESH	3339	YAKIMA	FELONY	ADMISSION	9/11/2015	2	0	75	.
ESH	3340	FRANKLIN	FELONY	ADMISSION	10/27/2015	.	.	.	34
ESH	3344	YAKIMA	MISDEMEANOR	ADMISSION	8/25/2015	0	1	92	.
ESH	3345	YAKIMA	FELONY	ADMISSION	9/11/2015	2	0	75	.



ESH	3346	FRANKLIN	FELONY	ADMISSION	10/27/2015	.	.	.	34
ESH	3347	CHELAN	MISDEMEANOR	ADMISSION	11/23/2015	.	.	.	7
ESH	3406	SPOKANE	FELONY	ADMISSION	8/20/2015	5	5	.	102
ESH	3407	SPOKANE	FELONY	ADMISSION	8/24/2015	0	1	.	98
ESH	3408	CHELAN	FELONY	ADMISSION	8/31/2015	1	2	.	91
ESH	3409	SPOKANE	MISDEMEANOR	ADMISSION	9/16/2015	1	1	.	75
ESH	3410	CHELAN	MISDEMEANOR	ADMISSION	10/6/2015	24	24	.	55
ESH	3411	YAKIMA	FELONY	ADMISSION	10/13/2015	1	1	.	48

**Appendix C: Class Member--Evaluation Information for December 2015**

Hospital	Class Member	Location	County	Offense	Completion Method or Incomplete	Order Signed Date	Number of days from signed order to:			
							Order Received	Discovery Received	Complete	Incomplete: End of Reporting Period
WSH	2465	JAIL	SNOHOMISH	MISDEMEANOR	WITHDRAWN	9/17/2015	0	0	.	105
WSH	2470	JAIL	KING	MISDEMEANOR	WITHDRAWN	9/18/2015	0	0	5	.
WSH	2510	JAIL	THURSTON	FELONY	WITHDRAWN	9/24/2015	0	0	74	.
WSH	2529	JAIL	SNOHOMISH	MISDEMEANOR	FAXED	9/30/2015	0	0	14	.
WSH	2687	JAIL	KING	FELONY	INCOMPLETE	9/30/2015	1	1	.	92
WSH	2772	JAIL	KING	MISDEMEANOR	FAXED	10/12/2015	0	1	3	.
WSH	2782	JAIL	THURSTON	MISDEMEANOR	WITHDRAWN	10/12/2015	0	0	24	.
WSH	2799	JAIL	KING	MISDEMEANOR	WITHDRAWN	10/14/2015	0	0	5	.
WSH	2821	JAIL	PIERCE	FELONY	INCOMPLETE	10/16/2015	10	10	.	76
WSH	2836	JAIL	KING	FELONY	FAXED	10/21/2015	0	0	42	.
WSH	2844	JAIL	KING	FELONY	FAXED	10/22/2015	0	0	41	.
WSH	2886	JAIL	MASON	MISDEMEANOR	FAXED	10/28/2015	2	2	8	.
WSH	3032	JAIL	KING	FELONY	TIC	10/16/2015	0	0	.	76
WSH	3042	JAIL	CLARK	MISDEMEANOR	FAXED	10/28/2015	7	7	19	.
WSH	3045	JAIL	KING	FELONY	FAXED	10/30/2015	3	3	33	.
WSH	3076	JAIL	KING	FELONY	TIC	10/16/2015	0	0	.	76
WSH	3083	JAIL	CLARK	MISDEMEANOR	FAXED	10/28/2015	7	7	19	.
WSH	3088	JAIL	KING	FELONY	FAXED	10/30/2015	3	3	33	.
WSH	3112	INPATIENT	PIERCE	MISDEMEANOR	CANCELLED	11/3/2015	10	10	28	.
WSH	3133	JAIL	KING	FELONY	FAXED	11/5/2015	0	0	40	.
WSH	3134	JAIL	KING	FELONY	FAXED	11/5/2015	1	1	26	.

WSH	3140	JAIL	SNOHOMISH	MISDEMEANOR	FAXED	11/6/2015	0	0	25	.
WSH	3148	INPATIENT	KING	MISDEMEANOR	BED OFFERED	11/9/2015	1	1	28	.
WSH	3149	JAIL	KING	FELONY	FAXED	11/9/2015	0	0	31	.
WSH	3150	JAIL	KING	FELONY	FAXED	11/9/2015	1	1	32	.
WSH	3154	JAIL	KING	FELONY	FAXED	11/10/2015	0	0	31	.
WSH	3155	JAIL	KING	FELONY	FAXED	11/10/2015	0	0	35	.
WSH	3156	JAIL	KING	FELONY	FAXED	11/10/2015	0	0	35	.
WSH	3165	INPATIENT	KING	FELONY CLASS B	BED OFFERED	11/12/2015	0	0	26	.
WSH	3166	INPATIENT	KING	FELONY CLASS B	BED OFFERED	11/12/2015	1	1	29	.
WSH	3167	JAIL	GRAYS HARBOR	FELONY	FAXED	11/12/2015	1	1	36	.
WSH	3168	JAIL	KING	FELONY	FAXED	11/12/2015	0	0	26	.
WSH	3169	JAIL	KING	FELONY	FAXED	11/12/2015	0	0	29	.
WSH	3170	JAIL	KING	FELONY	FAXED	11/12/2015	0	0	28	.
WSH	3171	JAIL	KING	FELONY	FAXED	11/12/2015	0	0	20	.
WSH	3172	JAIL	KING	MISDEMEANOR	FAXED	11/12/2015	0	0	33	.
WSH	3173	JAIL	KING	MISDEMEANOR	FAXED	11/12/2015	1	1	20	.
WSH	3174	JAIL	SKAGIT	FELONY	FAXED	11/12/2015	0	0	27	.
WSH	3180	JAIL	CLARK	MISDEMEANOR	INCOMPLETE	11/13/2015	0	0	.	48
WSH	3181	JAIL	KING	FELONY	FAXED	11/13/2015	0	0	48	.
WSH	3182	JAIL	MASON	FELONY	INCOMPLETE	11/13/2015	3	3	.	48
WSH	3183	JAIL	SKAGIT	FELONY	FAXED	11/13/2015	0	0	28	.
WSH	3185	JAIL	SNOHOMISH	MISDEMEANOR	FAXED	11/13/2015	0	0	18	.
WSH	3188	JAIL	KING	MISDEMEANOR	FAXED	11/16/2015	1	1	16	.
WSH	3189	JAIL	KING	MISDEMEANOR	FAXED	11/16/2015	1	1	18	.
WSH	3190	JAIL	KING	MISDEMEANOR	WITHDRAWN	11/16/2015	0	0	16	.
WSH	3191	JAIL	KING	MISDEMEANOR	FAXED	11/16/2015	0	0	36	.
WSH	3192	JAIL	KING	MISDEMEANOR	FAXED	11/16/2015	1	1	21	.
WSH	3193	JAIL	SNOHOMISH	MISDEMEANOR	FAXED	11/16/2015	0	0	15	.
WSH	3195	JAIL	CLARK	MISDEMEANOR	WITHDRAWN	11/17/2015	3	3	17	.
WSH	3196	JAIL	KING	FELONY	WITHDRAWN	11/17/2015	0	0	15	.
WSH	3197	JAIL	KING	MISDEMEANOR	FAXED	11/17/2015	1	1	15	.

WSH	3198	JAIL	KING	MISDEMEANOR	FAXED	11/17/2015	1	1	14	.
WSH	3199	JAIL	PIERCE	MISDEMEANOR	INCOMPLETE	11/17/2015	3	3	.	44
WSH	3200	JAIL	SNOHOMISH	MISDEMEANOR	FAXED	11/17/2015	0	0	14	.
WSH	3202	INPATIENT	KING	FELONY CLASS B	BED OFFERED	11/18/2015	1	1	30	.
WSH	3203	JAIL	KING	MISDEMEANOR	FAXED	11/18/2015	0	0	21	.
WSH	3207	JAIL	COWLITZ	FELONY	FAXED	11/19/2015	4	4	12	.
WSH	3208	JAIL	KING	FELONY	FAXED	11/19/2015	1	1	25	.
WSH	3209	JAIL	KING	MISDEMEANOR	FAXED	11/19/2015	1	1	20	.
WSH	3210	JAIL	SNOHOMISH	FELONY	INCOMPLETE	11/19/2015	0	0	.	42
WSH	3211	JAIL	SNOHOMISH	MISDEMEANOR	FAXED	11/19/2015	0	0	13	.
WSH	3212	JAIL	THURSTON	MISDEMEANOR	FAXED	11/19/2015	1	1	15	.
WSH	3213	JAIL	WHATCOM	FELONY	FAXED	11/19/2015	1	1	19	.
WSH	3214	JAIL	WHATCOM	FELONY	FAXED	11/19/2015	4	4	21	.
WSH	3217	JAIL	KING	FELONY	FAXED	11/20/2015	3	3	16	.
WSH	3219	JAIL	KING	MISDEMEANOR	WITHDRAWN	11/20/2015	0	0	14	.
WSH	3220	JAIL	KING	MISDEMEANOR	FAXED	11/20/2015	0	0	14	.
WSH	3222	JAIL	CLARK	FELONY	FAXED	11/23/2015	1	1	8	.
WSH	3223	JAIL	GRAYS HARBOR	MISDEMEANOR	FAXED	11/23/2015	0	0	9	.
WSH	3224	JAIL	KING	FELONY	FAXED	11/23/2015	1	1	23	.
WSH	3225	JAIL	KING	FELONY	FAXED	11/23/2015	0	0	18	.
WSH	3226	JAIL	KING	MISDEMEANOR	WITHDRAWN	11/23/2015	0	0	15	.
WSH	3227	JAIL	KING	MISDEMEANOR	FAXED	11/23/2015	0	0	24	.
WSH	3228	JAIL	KING	MISDEMEANOR	WITHDRAWN	11/23/2015	0	0	9	.
WSH	3229	JAIL	KING	MISDEMEANOR	WITHDRAWN	11/23/2015	0	0	9	.
WSH	3232	JAIL	KING	FELONY	FAXED	11/24/2015	0	0	20	.
WSH	3233	JAIL	KING	MISDEMEANOR	FAXED	11/24/2015	0	0	21	.
WSH	3234	JAIL	KING	MISDEMEANOR	FAXED	11/24/2015	0	0	21	.
WSH	3235	JAIL	PIERCE	MISDEMEANOR	FAXED	11/24/2015	0	0	16	.
WSH	3236	JAIL	KING	MISDEMEANOR	FAXED	11/25/2015	0	0	14	.
WSH	3237	JAIL	KITSAP	MISDEMEANOR	FAXED	11/25/2015	0	0	13	.
WSH	3238	JAIL	LEWIS	MISDEMEANOR	FAXED	11/25/2015	0	0	8	.

WSH	3239	JAIL	KING	FELONY	FAXED	11/27/2015	0	0	34	.
WSH	3255	JAIL	YAKIMA	FELONY	FAX	11/9/2015	0	0	30	.
WSH	3413	JAIL	CLALLAM	MISDEMEANOR	FAXED	10/13/2015	50	50	64	.
WSH	3414	JAIL	KING	MISDEMEANOR	FAXED	11/6/2015	0	0	12	.
WSH	3415	JAIL	CLARK	FELONY	FAXED	11/19/2015	1	1	22	.
WSH	3416	JAIL	SNOHOMISH	MISDEMEANOR	FAXED	11/20/2015	13	13	25	.
WSH	3417	INPATIENT	PIERCE	FELONY CLASS C	BED OFFERED	11/23/2015	0	0	29	0
WSH	3418	JAIL	KING	FELONY	FAXED	11/23/2015	17	17	22	.
WSH	3419	INPATIENT	CLARK	FELONY CLASS A	BED OFFERED	11/25/2015	5	5	21	.
WSH	3420	INPATIENT	KING	GROSS MISDEMEANOR	BED OFFERED	11/25/2015	0	0	13	.
WSH	3421	JAIL	KING	MISDEMEANOR	FAXED	11/25/2015	2	2	14	.
WSH	3422	JAIL	LEWIS	MISDEMEANOR	FAXED	11/25/2015	0	0	8	.
WSH	3423	JAIL	THURSTON	MISDEMEANOR	FAXED	11/25/2015	6	6	12	.
WSH	3424	JAIL	THURSTON	MISDEMEANOR	FAXED	11/25/2015	5	5	14	.
WSH	3425	JAIL	KING	FELONY	FAXED	11/30/2015	0	0	14	.
WSH	3426	JAIL	KING	FELONY	FAXED	11/30/2015	1	1	21	.
WSH	3427	JAIL	KING	FELONY	FAXED	11/30/2015	0	0	22	.
WSH	3428	JAIL	KING	MISDEMEANOR	INCOMPLETE	11/30/2015	1	1	.	31
WSH	3429	JAIL	KING	MISDEMEANOR	WITHDRAWN	11/30/2015	1	1	3	.
WSH	3430	JAIL	KING	MISDEMEANOR	TIC	11/30/2015	0	0	14	.
WSH	3431	JAIL	KING	MISDEMEANOR	FAXED	11/30/2015	0	0	15	.
WSH	3432	JAIL	KING	MISDEMEANOR	FAXED	11/30/2015	1	1	15	.
WSH	3433	JAIL	KING	MISDEMEANOR	FAXED	11/30/2015	1	1	15	.
WSH	3434	JAIL	KING	MISDEMEANOR	FAXED	11/30/2015	0	0	16	.
WSH	3435	JAIL	MASON	MISDEMEANOR	FAXED	11/30/2015	1	1	7	.
WSH	3436	JAIL	PIERCE	MISDEMEANOR	WITHDRAWN	11/30/2015	0	0	2	.
WSH	3437	JAIL	SNOHOMISH	FELONY	FAXED	11/30/2015	0	0	18	.
WSH	3438	JAIL	THURSTON	MISDEMEANOR	FAXED	11/30/2015	0	0	4	.
WSH	3439	JAIL	THURSTON	MISDEMEANOR	FAXED	11/30/2015	0	0	5	.
WSH	3440	JAIL	THURSTON	MISDEMEANOR	FAXED	11/30/2015	1	1	5	.

WSH	3441	JAIL	CLALLAM	MISDEMEANOR	FAXED	12/1/2015	1	1	8	.
WSH	3442	JAIL	CLALLAM	MISDEMEANOR	FAXED	12/1/2015	1	1	9	.
WSH	3443	JAIL	CLARK	FELONY	FAXED	12/1/2015	1	1	17	.
WSH	3444	JAIL	KING	MISDEMEANOR	FAXED	12/1/2015	0	0	3	.
WSH	3445	JAIL	KING	MISDEMEANOR	FAXED	12/1/2015	0	0	3	.
WSH	3446	JAIL	KING	MISDEMEANOR	WITHDRAWN	12/1/2015	1	1	7	.
WSH	3447	JAIL	KING	MISDEMEANOR	FAXED	12/1/2015	0	0	8	.
WSH	3448	JAIL	WHATCOM	MISDEMEANOR	FAXED	12/1/2015	10	10	15	.
WSH	3449	JAIL	KING	MISDEMEANOR	WITHDRAWN	12/2/2015	0	0	7	.
WSH	3450	JAIL	KING	MISDEMEANOR	FAXED	12/2/2015	1	1	9	.
WSH	3451	JAIL	KING	MISDEMEANOR	FAXED	12/2/2015	0	0	14	.
WSH	3452	JAIL	KING	MISDEMEANOR	FAXED	12/2/2015	1	1	14	.
WSH	3453	JAIL	MASON	MISDEMEANOR	FAXED	12/2/2015	0	0	6	.
WSH	3454	JAIL	PIERCE	FELONY	FAXED	12/2/2015	5	5	22	.
WSH	3455	JAIL	PIERCE	MISDEMEANOR	FAXED	12/2/2015	0	0	7	.
WSH	3456	JAIL	PIERCE	MISDEMEANOR	FAXED	12/2/2015	1	1	14	.
WSH	3457	JAIL	THURSTON	FELONY	FAXED	12/2/2015	1	1	9	.
WSH	3458	JAIL	CLALLAM	MISDEMEANOR	FAXED	12/3/2015	0	8	12	.
WSH	3459	JAIL	CLARK	MISDEMEANOR	FAXED	12/3/2015	1	1	7	.
WSH	3460	JAIL	CLARK	MISDEMEANOR	FAXED	12/3/2015	1	1	7	.
WSH	3461	JAIL	COWLITZ	FELONY	FAXED	12/3/2015	1	1	13	.
WSH	3462	JAIL	KING	FELONY	INCOMPLETE	12/3/2015	0	0	.	28
WSH	3463	JAIL	KING	FELONY	FAXED	12/3/2015	0	0	13	.
WSH	3464	JAIL	KING	MISDEMEANOR	FAXED	12/3/2015	0	0	17	.
WSH	3465	JAIL	KING	MISDEMEANOR	FAXED	12/3/2015	1	1	19	.
WSH	3466	JAIL	KITSAP	MISDEMEANOR	FAXED	12/3/2015	0	0	13	.
WSH	3467	JAIL	PIERCE	FELONY	FAXED	12/3/2015	5	5	18	.
WSH	3468	JAIL	SNOHOMISH	MISDEMEANOR	INCOMPLETE	12/3/2015	0	0	.	28
WSH	3469	JAIL	WHATCOM	FELONY	FAXED	12/3/2015	1	1	14	.
WSH	3470	JAIL	CLARK	FELONY	FAXED	12/4/2015	3	3	6	.
WSH	3471	JAIL	CLARK	FELONY	WITHDRAWN	12/4/2015	11	11	13	.

WSH	3472	JAIL	KING	FELONY	TIC	12/4/2015	0	0	14	.
WSH	3473	JAIL	KING	MISDEMEANOR	INCOMPLETE	12/4/2015	0	0	.	27
WSH	3474	JAIL	KING	MISDEMEANOR	FAXED	12/4/2015	3	3	12	.
WSH	3475	JAIL	KING	MISDEMEANOR	FAXED	12/4/2015	0	0	14	.
WSH	3476	JAIL	PIERCE	FELONY	FAXED	12/4/2015	3	3	13	.
WSH	3477	JAIL	PIERCE	MISDEMEANOR	WITHDRAWN	12/4/2015	3	3	11	.
WSH	3478	JAIL	PIERCE	MISDEMEANOR	FAXED	12/4/2015	0	0	18	.
WSH	3479	JAIL	SNOHOMISH	FELONY	INCOMPLETE	12/4/2015	0	0	.	27
WSH	3480	JAIL	SNOHOMISH	MISDEMEANOR	WITHDRAWN	12/4/2015	0	0	12	.
WSH	3481	JAIL	WHATCOM	MISDEMEANOR	FAXED	12/4/2015	7	7	13	.
WSH	3482	JAIL	CLALLAM	MISDEMEANOR	FAXED	12/7/2015	1	9	22	.
WSH	3483	JAIL	CLARK	MISDEMEANOR	FAXED	12/7/2015	0	0	10	.
WSH	3484	JAIL	KING	MISDEMEANOR	FAXED	12/7/2015	0	0	10	.
WSH	3485	JAIL	KING	MISDEMEANOR	FAXED	12/7/2015	0	0	11	.
WSH	3486	JAIL	LEWIS	FELONY	FAXED	12/7/2015	0	1	7	.
WSH	3487	JAIL	PIERCE	MISDEMEANOR	FAXED	12/7/2015	2	2	9	.
WSH	3488	JAIL	CLARK	MISDEMEANOR	FAXED	12/8/2015	0	0	14	.
WSH	3489	JAIL	CLARK	MISDEMEANOR	FAXED	12/8/2015	0	0	14	.
WSH	3490	JAIL	CLARK	MISDEMEANOR	FAXED	12/8/2015	1	1	15	.
WSH	3491	JAIL	KING	FELONY	FAXED	12/8/2015	1	0	22	.
WSH	3492	JAIL	LEWIS	MISDEMEANOR	FAXED	12/8/2015	0	0	8	.
WSH	3493	JAIL	SNOHOMISH	FELONY	FAXED	12/8/2015	1	1	10	.
WSH	3494	JAIL	SNOHOMISH	FELONY	FAXED	12/8/2015	1	1	13	.
WSH	3495	JAIL	SNOHOMISH	MISDEMEANOR	FAXED	12/8/2015	0	0	8	.
WSH	3496	JAIL	SNOHOMISH	MISDEMEANOR	FAXED	12/8/2015	0	0	16	.
WSH	3497	JAIL	THURSTON	MISDEMEANOR	FAXED	12/8/2015	0	0	8	.
WSH	3498	JAIL	WHATCOM	MISDEMEANOR	INCOMPLETE	12/8/2015	3	3	.	23
WSH	3499	JAIL	KING	FELONY	FAXED	12/9/2015	0	0	19	.
WSH	3500	JAIL	KING	MISDEMEANOR	WITHDRAWN	12/9/2015	0	0	7	.
WSH	3501	JAIL	KING	MISDEMEANOR	FAXED	12/9/2015	0	0	9	.
WSH	3502	JAIL	KING	MISDEMEANOR	FAXED	12/9/2015	0	0	13	.

WSH	3503	JAIL	PIERCE	MISDEMEANOR	FAXED	12/9/2015	0	0	14	.
WSH	3504	JAIL	SNOHOMISH	FELONY	TIC	12/9/2015	0	0	13	.
WSH	3505	JAIL	SNOHOMISH	MISDEMEANOR	FAXED	12/9/2015	1	1	13	.
WSH	3506	JAIL	THURSTON	FELONY	FAXED	12/9/2015	1	1	9	.
WSH	3507	JAIL	THURSTON	FELONY	FAXED	12/9/2015	1	1	13	.
WSH	3508	INPATIENT	WHATCOM	FELONY CLASS C	INCOMPLETE	12/10/2015	1	1	.	21
WSH	3509	JAIL	GRAYS HARBOR	MISDEMEANOR	FAXED	12/10/2015	1	1	13	.
WSH	3510	JAIL	KING	FELONY	FAXED	12/10/2015	0	0	13	.
WSH	3511	JAIL	KING	MISDEMEANOR	WITHDRAWN	12/10/2015	0	0	7	.
WSH	3512	JAIL	KING	MISDEMEANOR	FAXED	12/10/2015	0	0	13	.
WSH	3513	JAIL	KING	MISDEMEANOR	FAXED	12/10/2015	0	0	13	.
WSH	3514	JAIL	KING	MISDEMEANOR	FAXED	12/10/2015	0	0	13	.
WSH	3515	JAIL	PIERCE	MISDEMEANOR	FAXED	12/10/2015	0	0	13	.
WSH	3516	JAIL	PIERCE	MISDEMEANOR	FAXED	12/10/2015	0	0	14	.
WSH	3517	JAIL	SNOHOMISH	FELONY	FAXED	12/10/2015	0	0	19	.
WSH	3518	JAIL	WHATCOM	FELONY	FAXED	12/10/2015	1	1	21	.
WSH	3519	JAIL	WHATCOM	MISDEMEANOR	FAXED	12/10/2015	4	4	18	.
WSH	3520	INPATIENT	THURSTON	FELONY CLASS C	INCOMPLETE	12/11/2015	11	11	.	20
WSH	3521	JAIL	JEFFERSON	FELONY	CRIC	12/11/2015	0	0	11	.
WSH	3522	JAIL	KING	MISDEMEANOR	FAXED	12/11/2015	0	0	6	.
WSH	3523	JAIL	PIERCE	MISDEMEANOR	WITHDRAWN	12/11/2015	0	0	12	.
WSH	3524	JAIL	PIERCE	MISDEMEANOR	FAXED	12/11/2015	0	0	17	.
WSH	3525	JAIL	SNOHOMISH	MISDEMEANOR	INCOMPLETE	12/11/2015	0	0	.	20
WSH	3526	JAIL	SNOHOMISH	MISDEMEANOR	FAXED	12/11/2015	0	0	11	.
WSH	3527	JAIL	THURSTON	FELONY	TIC	12/11/2015	3	3	11	.
WSH	3528	JAIL	THURSTON	FELONY	FAXED	12/11/2015	3	3	11	.
WSH	3529	JAIL	CLARK	FELONY	FAXED	12/14/2015	0	0	8	.
WSH	3530	JAIL	CLARK	FELONY	FAXED	12/14/2015	0	0	8	.
WSH	3531	JAIL	GRAYS HARBOR	FELONY	FAXED	12/14/2015	1	1	15	.
WSH	3532	JAIL	KING	FELONY	INCOMPLETE	12/14/2015	0	0	.	17
WSH	3533	JAIL	KING	FELONY	FAXED	12/14/2015	0	0	15	.



WSH	3534	JAIL	KING	MISDEMEANOR	FAXED	12/14/2015	0	0	9	.
WSH	3535	JAIL	KING	MISDEMEANOR	FAXED	12/14/2015	0	0	10	.
WSH	3536	JAIL	KITSAP	FELONY	FAXED	12/14/2015	0	0	4	.
WSH	3537	JAIL	PIERCE	MISDEMEANOR	FAXED	12/14/2015	0	0	15	.
WSH	3538	JAIL	SAN JUAN	FELONY	FAXED	12/14/2015	0	1	12	.
WSH	3539	INPATIENT	KING	MISDEMEANOR	INCOMPLETE	12/15/2015	7	7	.	16
WSH	3540	INPATIENT	PIERCE	FELONY CLASS A	BED OFFERED	12/15/2015	0	0	0	.
WSH	3541	JAIL	KING	FELONY	INCOMPLETE	12/15/2015	0	0	.	16
WSH	3542	JAIL	KING	FELONY	INCOMPLETE	12/15/2015	0	0	.	16
WSH	3543	JAIL	KING	FELONY	FAXED	12/15/2015	0	0	15	.
WSH	3544	JAIL	KING	MISDEMEANOR	FAXED	12/15/2015	0	.	14	.
WSH	3545	JAIL	WHATCOM	MISDEMEANOR	TIC	12/15/2015	0	0	16	.
WSH	3546	JAIL	CLARK	FELONY	FAXED	12/16/2015	0	0	6	.
WSH	3547	JAIL	CLARK	MISDEMEANOR	FAXED	12/16/2015	1	1	6	.
WSH	3548	JAIL	JEFFERSON	MISDEMEANOR	FAXED	12/16/2015	2	2	13	.
WSH	3549	JAIL	KING	FELONY	INCOMPLETE	12/16/2015	0	0	.	15
WSH	3550	JAIL	KING	MISDEMEANOR	FAXED	12/16/2015	1	1	13	.
WSH	3551	JAIL	KING	MISDEMEANOR	FAXED	12/16/2015	2	2	14	.
WSH	3552	JAIL	PIERCE	MISDEMEANOR	INCOMPLETE	12/16/2015	0	0	.	15
WSH	3553	JAIL	PIERCE	MISDEMEANOR	INCOMPLETE	12/16/2015	0	0	.	15
WSH	3554	JAIL	PIERCE	MISDEMEANOR	INCOMPLETE	12/16/2015	0	0	.	15
WSH	3555	JAIL	SNOHOMISH	MISDEMEANOR	FAXED	12/16/2015	1	1	14	.
WSH	3556	JAIL	SNOHOMISH	MISDEMEANOR	FAXED	12/16/2015	0	0	15	.
WSH	3557	JAIL	THURSTON	MISDEMEANOR	FAXED	12/16/2015	0	0	14	.
WSH	3558	INPATIENT	PIERCE	FELONY CLASS A	INCOMPLETE	12/17/2015	4	.	.	14
WSH	3559	JAIL	KING	FELONY	INCOMPLETE	12/17/2015	0	0	.	14
WSH	3560	JAIL	KING	FELONY	INCOMPLETE	12/17/2015	0	0	.	14
WSH	3561	JAIL	KING	MISDEMEANOR	INCOMPLETE	12/17/2015	1	1	.	14
WSH	3562	JAIL	KING	MISDEMEANOR	INCOMPLETE	12/17/2015	1	1	.	14
WSH	3563	JAIL	SKAGIT	FELONY	INCOMPLETE	12/17/2015	1	1	.	14
WSH	3564	JAIL	KING	MISDEMEANOR	INCOMPLETE	12/18/2015	0	0	.	13

WSH	3565	JAIL	KING	MISDEMEANOR	INCOMPLETE	12/18/2015	0	0	.	13
WSH	3566	JAIL	PIERCE	MISDEMEANOR	INCOMPLETE	12/18/2015	0	0	.	13
WSH	3567	JAIL	SNOHOMISH	FELONY	INCOMPLETE	12/18/2015	0	3	.	13
WSH	3568	INPATIENT	KING	FELONY CLASS A	INCOMPLETE	12/21/2015	0	.	.	10
WSH	3569	INPATIENT	KING	FELONY CLASS A	INCOMPLETE	12/21/2015	1	1	.	10
WSH	3570	JAIL	CLALLAM	MISDEMEANOR	INCOMPLETE	12/21/2015	1	1	.	10
WSH	3571	JAIL	KING	FELONY	INCOMPLETE	12/21/2015	0	0	.	10
WSH	3572	JAIL	KING	MISDEMEANOR	INCOMPLETE	12/21/2015	1	1	.	10
WSH	3573	JAIL	KING	MISDEMEANOR	INCOMPLETE	12/21/2015	0	0	.	10
WSH	3574	JAIL	KING	MISDEMEANOR	INCOMPLETE	12/21/2015	0	0	.	10
WSH	3575	JAIL	KING	MISDEMEANOR	INCOMPLETE	12/21/2015	0	0	.	10
WSH	3576	JAIL	KING	MISDEMEANOR	INCOMPLETE	12/21/2015	1	1	.	10
WSH	3577	JAIL	KING	MISDEMEANOR	INCOMPLETE	12/21/2015	3	3	.	10
WSH	3578	JAIL	KING	MISDEMEANOR	INCOMPLETE	12/21/2015	2	2	.	10
WSH	3579	JAIL	KING	MISDEMEANOR	FAXED	12/21/2015	0	0	8	.
WSH	3580	JAIL	KITSAP	FELONY	INCOMPLETE	12/21/2015	0	0	.	10
WSH	3581	JAIL	MASON	MISDEMEANOR	INCOMPLETE	12/21/2015	1	1	.	10
WSH	3582	JAIL	SNOHOMISH	MISDEMEANOR	INCOMPLETE	12/21/2015	0	0	.	10
WSH	3583	JAIL	THURSTON	FELONY	INCOMPLETE	12/21/2015	0	0	.	10
WSH	3584	JAIL	THURSTON	FELONY	FAXED	12/21/2015	0	0	1	.
WSH	3585	JAIL	THURSTON	MISDEMEANOR	INCOMPLETE	12/21/2015	1	1	.	10
WSH	3586	JAIL	CLARK	FELONY	INCOMPLETE	12/22/2015	0	0	.	9
WSH	3587	JAIL	KING	FELONY	INCOMPLETE	12/22/2015	0	0	.	9
WSH	3588	JAIL	KING	FELONY	INCOMPLETE	12/22/2015	0	0	.	9
WSH	3589	JAIL	KING	MISDEMEANOR	INCOMPLETE	12/22/2015	0	0	.	9
WSH	3590	JAIL	KING	MISDEMEANOR	INCOMPLETE	12/22/2015	0	0	.	9
WSH	3591	JAIL	SNOHOMISH	MISDEMEANOR	INCOMPLETE	12/22/2015	0	0	.	9
WSH	3592	JAIL	SNOHOMISH	MISDEMEANOR	INCOMPLETE	12/22/2015	0	0	.	9
WSH	3593	INPATIENT	PIERCE	FELONY	INCOMPLETE	12/23/2015	1	1	.	8
WSH	3594	INPATIENT	PIERCE	FELONY CLASS C	INCOMPLETE	12/23/2015	1	1	.	8
WSH	3595	JAIL	CLARK	MISDEMEANOR	INCOMPLETE	12/23/2015	1	1	.	8

WSH	3596	JAIL	GRAYS HARBOR	MISDEMEANOR	INCOMPLETE	12/23/2015	0	0	.	8
WSH	3597	JAIL	KING	FELONY	INCOMPLETE	12/23/2015	0	0	.	8
WSH	3598	JAIL	KING	FELONY	INCOMPLETE	12/23/2015	0	0	.	8
WSH	3599	JAIL	KING	FELONY	INCOMPLETE	12/23/2015	0	0	.	8
WSH	3600	JAIL	KING	MISDEMEANOR	INCOMPLETE	12/23/2015	0	0	.	8
WSH	3601	JAIL	KING	MISDEMEANOR	INCOMPLETE	12/23/2015	0	1	.	8
WSH	3602	JAIL	PIERCE	MISDEMEANOR	INCOMPLETE	12/23/2015	0	0	.	8
WSH	3603	JAIL	PIERCE	MISDEMEANOR	INCOMPLETE	12/23/2015	0	0	.	8
WSH	3604	JAIL	PIERCE	MISDEMEANOR	INCOMPLETE	12/23/2015	0	0	.	8
WSH	3605	JAIL	THURSTON	FELONY	INCOMPLETE	12/23/2015	0	0	.	8
WSH	3606	JAIL	THURSTON	FELONY	INCOMPLETE	12/23/2015	0	0	.	8
WSH	3607	JAIL	THURSTON	FELONY	INCOMPLETE	12/23/2015	0	0	.	8
WSH	3608	JAIL	CLARK	FELONY	INCOMPLETE	12/24/2015	4	4	.	7
WSH	3609	JAIL	CLARK	FELONY	INCOMPLETE	12/24/2015	4	4	.	7
WSH	3610	JAIL	CLARK	FELONY	INCOMPLETE	12/24/2015	4	4	.	7
WSH	3611	JAIL	CLARK	MISDEMEANOR	INCOMPLETE	12/24/2015	0	0	.	7
WSH	3612	JAIL	KING	FELONY	INCOMPLETE	12/24/2015	0	0	.	7
WSH	3613	JAIL	KING	MISDEMEANOR	INCOMPLETE	12/24/2015	0	0	.	7
WSH	3614	JAIL	KING	FELONY	INCOMPLETE	12/28/2015	0	0	.	3
WSH	3615	JAIL	KING	MISDEMEANOR	INCOMPLETE	12/28/2015	0	0	.	3
WSH	3616	JAIL	KITSAP	MISDEMEANOR	INCOMPLETE	12/28/2015	0	0	.	3
WSH	3617	JAIL	KITSAP	MISDEMEANOR	INCOMPLETE	12/28/2015	0	0	.	3
WSH	3618	JAIL	LEWIS	FELONY	FAXED	12/28/2015	0	0	2	.
WSH	3619	JAIL	SNOHOMISH	MISDEMEANOR	INCOMPLETE	12/28/2015	0	0	.	3
WSH	3620	JAIL	KING	MISDEMEANOR	INCOMPLETE	12/29/2015	1	1	.	2
WSH	3621	JAIL	KING	MISDEMEANOR	INCOMPLETE	12/29/2015	0	0	.	2
WSH	3622	JAIL	KING	MISDEMEANOR	INCOMPLETE	12/29/2015	0	0	.	2
WSH	3623	JAIL	KING	MISDEMEANOR	INCOMPLETE	12/29/2015	2	2	.	2
WSH	3624	JAIL	KITSAP	MISDEMEANOR	INCOMPLETE	12/29/2015	0	0	.	2
WSH	3625	JAIL	KING	MISDEMEANOR	INCOMPLETE	12/30/2015	0	0	.	1
WSH	3626	JAIL	KING	MISDEMEANOR	INCOMPLETE	12/30/2015	0	0	.	1

WSH	3627	JAIL	THURSTON	FELONY	INCOMPLETE	12/30/2015	0	0	.	1
WSH	3628	JAIL	THURSTON	FELONY	INCOMPLETE	12/30/2015	0	0	.	1
WSH	3629	JAIL	CLARK	MISDEMEANOR	INCOMPLETE	12/31/2015	0	0	.	0
ESH	2328	JAIL	YAKIMA	MISDEMEANOR	FAX	8/26/2015	28	28	105	.
ESH	2531	JAIL	FRANKLIN	FELONY	FAX	9/1/2015	14	14	113	.
ESH	2534	INPATIENT	SPOKANE	FELONY	ADMISSION	9/2/2015	21	21	117	.
ESH	2561	INPATIENT	ADAMS	FELONY	ADMISSION	9/18/2015	3	3	94	.
ESH	2570	JAIL	YAKIMA	FELONY	FAX	9/22/2015	2	3	78	.
ESH	2580	JAIL	SPOKANE	MISDEMEANOR	FAX	9/28/2015	0	0	73	.
ESH	2899	INPATIENT	SPOKANE	FELONY	ADMISSION	9/30/2015	1	1	89	.
ESH	2900	INPATIENT	PEND OREILLE	FELONY	ADMISSION	10/1/2015	1	29	.	91
ESH	2902	INPATIENT	YAKIMA	FELONY	ADMISSION	10/7/2015	1	8	84	.
ESH	2914	JAIL	YAKIMA	MISDEMEANOR	FAX	10/19/2015	0	14	52	.
ESH	2917	JAIL	OKANOGAN	FELONY	FAX	10/20/2015	0	0	52	.
ESH	2918	JAIL	BENTON	FELONY	FAX	10/21/2015	0	1	44	.
ESH	2919	JAIL	BENTON	FELONY	FAX	10/21/2015	0	1	42	.
ESH	2920	JAIL	BENTON	MISDEMEANOR	FAX	10/21/2015	0	0	41	.
ESH	2924	JAIL	BENTON	FELONY	FAX	10/22/2015	0	0	57	.
ESH	2925	JAIL	GRANT	FELONY	FAX	10/22/2015	0	.	.	70
ESH	2926	JAIL	OKANOGAN	FELONY	FAX	10/22/2015	0	0	48	.
ESH	2927	JAIL	PEND OREILLE	FELONY	FAX	10/22/2015	0	6	43	.
ESH	2929	JAIL	BENTON	MISDEMEANOR	FAX	10/28/2015	0	2	56	.
ESH	2930	JAIL	CHELAN	FELONY	FAX	10/28/2015	0	0	35	.
ESH	2931	JAIL	FRANKLIN	MISDEMEANOR	FAX	10/28/2015	0	0	55	.
ESH	2932	JAIL	OKANOGAN	FELONY	FAX	10/28/2015	0	0	50	.
ESH	3055	JAIL	ASOTIN	MISDEMEANOR	FAX	10/30/2015	0	13	34	.
ESH	3242	INPATIENT	CHELAN	MISDEMEANOR	ADMISSION	10/15/2015	0	0	62	.
ESH	3245	JAIL	CHELAN	MISDEMEANOR	FAX	11/3/2015	22	22	29	.
ESH	3246	JAIL	GRANT	FELONY	FAX	11/3/2015	0	0	35	.
ESH	3248	JAIL	BENTON	MISDEMEANOR	FAX	11/4/2015	0	0	48	.
ESH	3249	JAIL	OKANOGAN	MISDEMEANOR	FAX	11/4/2015	0	0	37	.

ESH	3250	JAIL	SPOKANE	FELONY	FAX	11/4/2015	5	5	30	.
ESH	3251	JAIL	STEVENS	FELONY	FAX	11/4/2015	0	1	36	.
ESH	3252	JAIL	SPOKANE	MISDEMEANOR	FAX	11/5/2015	0	0	49	.
ESH	3257	INPATIENT	YAKIMA	FELONY	ADMISSION	11/12/2015	4	8	.	49
ESH	3258	JAIL	SPOKANE	FELONY	FAX	11/12/2015	5	5	42	.
ESH	3259	JAIL	SPOKANE	MISDEMEANOR	FAX	11/12/2015	1	1	40	.
ESH	3260	JAIL	FRANKLIN	MISDEMEANOR	FAX	11/16/2015	1	1	37	.
ESH	3261	JAIL	YAKIMA	MISDEMEANOR	FAX	11/16/2015	0	0	24	.
ESH	3262	JAIL	CHELAN	MISDEMEANOR	FAX	11/17/2015	1	1	24	.
ESH	3265	JAIL	YAKIMA	MISDEMEANOR	FAX	11/18/2015	0	0	23	.
ESH	3266	JAIL	BENTON	FELONY	FAX	11/19/2015	1	5	19	.
ESH	3267	JAIL	SPOKANE	FELONY	FAX	11/19/2015	0	4	25	.
ESH	3269	JAIL	YAKIMA	MISDEMEANOR	FAX	11/23/2015	0	0	22	.
ESH	3270	JAIL	CHELAN	MISDEMEANOR	FAX	11/24/2015	0	0	23	.
ESH	3271	JAIL	STEVENS	FELONY	FAX	11/24/2015	1	1	36	.
ESH	3272	JAIL	YAKIMA	MISDEMEANOR	FAX	11/24/2015	0	1	16	.
ESH	3273	JAIL	BENTON	FELONY	FAX	11/25/2015	0	7	36	.
ESH	3630	JAIL	BENTON	FELONY	FAX	10/15/2015	0	5	.	77
ESH	3631	INPATIENT	FRANKLIN	FELONY	ADMISSION	10/20/2015	0	1	70	.
ESH	3632	JAIL	CHELAN	MISDEMEANOR	FAX	10/20/2015	0	10	57	.
ESH	3633	INPATIENT	FRANKLIN	MISDEMEANOR	ADMISSION	10/21/2015	0	7	69	.
ESH	3634	JAIL	GRANT	MISDEMEANOR	FAX	10/27/2015	3	3	50	.
ESH	3635	JAIL	SPOKANE	FELONY	FAX	11/2/2015	56	56	.	59
ESH	3636	JAIL	BENTON	FELONY	FAX	11/19/2015	1	11	32	.
ESH	3637	JAIL	SPOKANE	FELONY	FAX	11/25/2015	6	7	27	.
ESH	3638	INPATIENT	CHELAN	FELONY	ADMISSION	11/30/2015	2	.	.	31
ESH	3639	JAIL	OKANOGAN	FELONY	FAX	11/30/2015	1	30	.	31
ESH	3640	JAIL	BENTON	FELONY	FAX	12/1/2015	0	1	.	30
ESH	3641	JAIL	BENTON	FELONY	FAX	12/1/2015	0	1	.	30
ESH	3642	JAIL	SPOKANE	FELONY	FAX	12/1/2015	3	6	.	30
ESH	3643	INPATIENT	YAKIMA	FELONY	ADMISSION	12/2/2015	0	0	.	29

ESH	3644	JAIL	SPOKANE	FELONY	FAX	12/2/2015	2	2	.	29
ESH	3645	JAIL	SPOKANE	MISDEMEANOR	FAX	12/2/2015	0	0	.	29
ESH	3646	JAIL	BENTON	FELONY	FAX	12/3/2015	0	0	19	.
ESH	3647	JAIL	CHELAN	MISDEMEANOR	FAX	12/3/2015	1	5	13	.
ESH	3648	JAIL	CHELAN	MISDEMEANOR	FAX	12/3/2015	1	1	26	.
ESH	3649	JAIL	BENTON	MISDEMEANOR	FAX	12/4/2015	0	5	17	.
ESH	3650	JAIL	PEND OREILLE	FELONY	FAX	12/4/2015	0	0	.	27
ESH	3651	JAIL	SPOKANE	MISDEMEANOR	FAX	12/4/2015	0	0	27	.
ESH	3652	JAIL	YAKIMA	FELONY	FAX	12/4/2015	3	4	.	27
ESH	3653	INPATIENT	CHELAN	FELONY	ADMISSION	12/7/2015	1	1	.	24
ESH	3654	JAIL	SPOKANE	FELONY	FAX	12/7/2015	8	8	.	24
ESH	3655	INPATIENT	CHELAN	MISDEMEANOR	ADMISSION	12/8/2015	1	2	.	23
ESH	3656	JAIL	KITTITAS	FELONY	FAX	12/8/2015	2	2	15	.
ESH	3657	JAIL	SPOKANE	FELONY	FAX	12/8/2015	1	1	.	23
ESH	3658	JAIL	BENTON	FELONY	FAX	12/9/2015	0	2	14	.
ESH	3659	JAIL	BENTON	MISDEMEANOR	FAX	12/9/2015	0	0	22	.
ESH	3660	JAIL	SPOKANE	FELONY	FAX	12/9/2015	2	2	.	22
ESH	3661	JAIL	SPOKANE	MISDEMEANOR	FAX	12/9/2015	0	0	.	22
ESH	3662	INPATIENT	SPOKANE	FELONY	ADMISSION	12/10/2015	1	1	.	21
ESH	3663	JAIL	SPOKANE	FELONY	FAX	12/10/2015	0	0	.	21
ESH	3664	INPATIENT	YAKIMA	FELONY	ADMISSION	12/11/2015	4	.	.	20
ESH	3665	JAIL	SPOKANE	FELONY	FAX	12/11/2015	3	3	.	20
ESH	3666	JAIL	YAKIMA	FELONY	FAX	12/11/2015	4	4	.	20
ESH	3667	JAIL	BENTON	MISDEMEANOR	FAX	12/15/2015	2	2	.	16
ESH	3668	JAIL	BENTON	FELONY	FAX	12/16/2015	2	2	.	15
ESH	3669	JAIL	BENTON	FELONY	FAX	12/16/2015	0	0	7	.
ESH	3670	JAIL	BENTON	MISDEMEANOR	FAX	12/16/2015	1	1	.	15
ESH	3671	JAIL	FRANKLIN	MISDEMEANOR	FAX	12/16/2015	0	.	.	15
ESH	3672	INPATIENT	YAKIMA	FELONY	ADMISSION	12/17/2015	0	13	.	14
ESH	3673	JAIL	BENTON	MISDEMEANOR	FAX	12/17/2015	0	.	.	14
ESH	3674	JAIL	SPOKANE	FELONY	FAX	12/17/2015	1	1	.	14

ESH	3675	JAIL	SPOKANE	FELONY	FAX	12/17/2015	0	1	.	14
ESH	3676	JAIL	SPOKANE	FELONY	FAX	12/21/2015	10	10	.	10
ESH	3677	INPATIENT	FRANKLIN	FELONY	ADMISSION	12/22/2015	1	1	.	9
ESH	3678	INPATIENT	GRANT	FELONY	ADMISSION	12/22/2015	1	1	.	9
ESH	3679	JAIL	FRANKLIN	MISDEMEANOR	FAX	12/22/2015	1	1	9	.
ESH	3680	JAIL	FRANKLIN	MISDEMEANOR	FAX	12/22/2015	0	0	9	.
ESH	3681	JAIL	KITTITAS	FELONY	FAX	12/22/2015	0	2	.	9
ESH	3682	JAIL	SPOKANE	FELONY	FAX	12/22/2015	1	1	.	9
ESH	3683	JAIL	SPOKANE	FELONY	FAX	12/22/2015	1	1	.	9
ESH	3684	INPATIENT	YAKIMA	FELONY	ADMISSION	12/24/2015	4	4	.	7
ESH	3685	JAIL	SPOKANE	FELONY	FAX	12/24/2015	0	0	.	7
ESH	3686	INPATIENT	FRANKLIN	FELONY	ADMISSION	12/28/2015	2	2	.	3
ESH	3687	JAIL	CHELAN	FELONY	FAX	12/28/2015	1	.	.	3
ESH	3688	JAIL	FRANKLIN	MISDEMEANOR	FAX	12/28/2015	0	0	.	3
ESH	3689	JAIL	GRANT	FELONY	FAX	12/28/2015	2	2	.	3
ESH	3690	JAIL	YAKIMA	FELONY	FAX	12/28/2015	1	.	.	3
ESH	3691	JAIL	YAKIMA	FELONY	FAX	12/28/2015	1	.	.	3
ESH	3692	JAIL	GRANT	FELONY	FAX	12/29/2015	2	2	.	2
ESH	3693	JAIL	YAKIMA	FELONY	FAX	12/29/2015	0	1	.	2
ESH	3694	INPATIENT	YAKIMA	FELONY	ADMISSION	12/30/2015	1	.	.	1
ESH	3695	JAIL	SPOKANE	FELONY	FAX	12/31/2015	0	.	.	0

### Appendix D: Class Member--Restoration Information for December 2015

Hospital	Class Member	County	Offense	Completion Method or Incomplete	Order Signed Date	Number of days from signed order to:			
						Order Received	Discovery Received	Complete	Incomplete: End of Reporting Period
WSH	2288	WHATCOM	FELONY CLASS C	BED OFFERED	8/21/2015	3	3	116	.
WSH	2616	KITSAP	FELONY CLASS C	INCOMPLETE	9/16/2015	0	0	.	106
WSH	2631	CLARK	FELONY CLASS B	BED OFFERED	9/22/2015	1	1	71	.
WSH	2635	KING	MISDEMEANOR	BED OFFERED	9/22/2015	0	0	80	.
WSH	2646	PIERCE	FELONY CLASS B	BED OFFERED	9/25/2015	3	3	67	0
WSH	2942	SNOHOMISH	MISDEMEANOR	INCOMPLETE	9/21/2015	24	24	.	101
WSH	2956	KING	FELONY CLASS B	BED OFFERED	10/1/2015	0	0	62	.
WSH	2957	KING	FELONY CLASS B	BED OFFERED	10/2/2015	0	0	63	.
WSH	2958	MASON	FELONY CLASS B	BED OFFERED	10/2/2015	3	3	63	.
WSH	2959	PIERCE	FELONY CLASS A	BED OFFERED	10/2/2015	3	3	65	.
WSH	2960	PIERCE	FELONY CLASS B	BED OFFERED	10/2/2015	3	3	62	.
WSH	2961	CLARK	FELONY CLASS A	BED OFFERED	10/5/2015	2	2	63	.
WSH	2962	COWLITZ	FELONY CLASS A	BED OFFERED	10/5/2015	1	1	60	.
WSH	2964	THURSTON	FELONY CLASS B	BED OFFERED	10/5/2015	1	1	57	.
WSH	2967	KING	FELONY CLASS B	BED OFFERED	10/6/2015	1	1	62	.
WSH	2969	KING	FELONY CLASS B	BED OFFERED	10/7/2015	1	1	56	.
WSH	2973	CLARK	FELONY CLASS C	CANCELLED	10/8/2015	0	0	54	.
WSH	2974	KING	FELONY CLASS B	BED OFFERED	10/8/2015	1	1	55	.
WSH	2975	LEWIS	FELONY CLASS C	BED OFFERED	10/8/2015	0	0	54	.
WSH	2980	GRAYS HARBOR	FELONY CLASS C	BED OFFERED	10/12/2015	2	2	53	.
WSH	2982	KING	FELONY CLASS A	BED OFFERED	10/13/2015	0	0	55	.
WSH	2983	KING	FELONY CLASS B	BED OFFERED	10/13/2015	0	0	52	.
WSH	2984	MASON	FELONY CLASS C	BED OFFERED	10/13/2015	17	17	55	.
WSH	2985	CLARK	FELONY CLASS B	BED OFFERED	10/14/2015	1	1	56	.



WSH	2986	KING	FELONY CLASS A	BED OFFERED	10/14/2015	0	0	55	.
WSH	2988	PIERCE	FELONY CLASS C	BED OFFERED	10/19/2015	1	1	45	.
WSH	2990	KING	FELONY CLASS B	BED OFFERED	10/20/2015	0	0	57	.
WSH	2991	PIERCE	FELONY CLASS B	BED OFFERED	10/21/2015	2	2	58	.
WSH	2992	PIERCE	FELONY CLASS B	BED OFFERED	10/21/2015	2	2	58	.
WSH	2993	PIERCE	FELONY CLASS B	BED OFFERED	10/21/2015	2	2	43	.
WSH	2994	PIERCE	FELONY CLASS C	BED OFFERED	10/21/2015	2	2	43	.
WSH	2995	PIERCE	FELONY CLASS C	BED OFFERED	10/21/2015	2	2	43	.
WSH	3000	KING	MISDEMEANOR	INCOMPLETE	10/23/2015	0	0	.	69
WSH	3003	KING	FELONY CLASS C	INCOMPLETE	10/26/2015	1	1	.	66
WSH	3004	THURSTON	FELONY CLASS B	BED OFFERED	10/26/2015	1	1	43	.
WSH	3005	THURSTON	FELONY CLASS C	BED OFFERED	10/26/2015	1	1	43	.
WSH	3007	KING	FELONY CLASS B	BED OFFERED	10/27/2015	0	0	52	.
WSH	3008	KING	FELONY CLASS C	BED OFFERED	10/27/2015	0	0	45	.
WSH	3010	KING	FELONY CLASS C	BED OFFERED	10/28/2015	0	0	49	.
WSH	3011	PIERCE	FELONY CLASS B	BED OFFERED	10/28/2015	0	0	50	.
WSH	3012	PIERCE	FELONY CLASS C	BED OFFERED	10/28/2015	0	0	49	.
WSH	3013	LEWIS	FELONY CLASS C	BED OFFERED	10/29/2015	1	1	54	.
WSH	3014	PIERCE	FELONY CLASS A	BED OFFERED	10/29/2015	0	0	61	.
WSH	3015	SKAGIT	FELONY CLASS C	CANCELLED	10/29/2015	1	1	49	.
WSH	3016	SNOHOMISH	FELONY CLASS B	INCOMPLETE	10/29/2015	0	0	.	63
WSH	3067	CLARK	FELONY CLASS B	CANCELLED	10/27/2015	8	8	43	.
WSH	3279	CLARK	FELONY CLASS B	CANCELLED	10/27/2015	8	8	43	.
WSH	3282	KING	FELONY CLASS B	BED OFFERED	11/2/2015	1	1	58	.
WSH	3283	KING	FELONY CLASS C	BED OFFERED	11/2/2015	0	0	52	.
WSH	3286	PIERCE	FELONY CLASS C	BED OFFERED	11/2/2015	1	1	49	.
WSH	3287	KING	FELONY CLASS A	BED OFFERED	11/4/2015	0	0	.	.
WSH	3288	KING	FELONY CLASS B	INCOMPLETE	11/4/2015	0	0	.	57
WSH	3289	KING	FELONY CLASS C	BED OFFERED	11/4/2015	0	0	47	.
WSH	3291	PIERCE	FELONY CLASS A	BED OFFERED	11/4/2015	2	2	.	.

WSH	3292	PIERCE	FELONY CLASS B	BED OFFERED	11/4/2015	1	1	47	.
WSH	3293	PIERCE	FELONY CLASS C	BED OFFERED	11/4/2015	2	2	47	.
WSH	3295	THURSTON	FELONY CLASS B	BED OFFERED	11/4/2015	0	0	57	.
WSH	3296	CLARK	FELONY CLASS C	CANCELLED	11/5/2015	0	0	55	.
WSH	3297	CLALLAM	FELONY CLASS C	INCOMPLETE	11/6/2015	0	0	.	55
WSH	3301	KING	FELONY CLASS B	BED OFFERED	11/9/2015	3	3	.	.
WSH	3302	PIERCE	FELONY CLASS C	BED OFFERED	11/10/2015	2	2	50	.
WSH	3305	SKAGIT	FELONY CLASS C	BED OFFERED	11/13/2015	0	0	.	.
WSH	3306	KING	MISDEMEANOR	BED OFFERED	11/16/2015	0	0	15	.
WSH	3307	PIERCE	FELONY CLASS C	BED OFFERED	11/16/2015	1	1	.	.
WSH	3309	CLARK	FELONY CLASS C	BED OFFERED	11/17/2015	0	0	.	.
WSH	3310	CLARK	FELONY CLASS C	INCOMPLETE	11/17/2015	1	1	.	44
WSH	3311	KING	FELONY CLASS B	INCOMPLETE	11/17/2015	0	0	.	44
WSH	3312	SNOHOMISH	FELONY CLASS C	BED OFFERED	11/17/2015	0	0	.	.
WSH	3313	CLARK	FELONY CLASS C	BED OFFERED	11/18/2015	1	1	.	.
WSH	3314	KING	MISDEMEANOR	BED OFFERED	11/18/2015	1	1	13	.
WSH	3315	SNOHOMISH	FELONY CLASS B	BED OFFERED	11/18/2015	1	1	.	.
WSH	3316	KING	FELONY CLASS A	INCOMPLETE	11/19/2015	1	1	.	42
WSH	3317	KING	FELONY CLASS B	INCOMPLETE	11/19/2015	0	0	.	42
WSH	3318	SNOHOMISH	FELONY CLASS C	INCOMPLETE	11/19/2015	0	0	.	42
WSH	3319	PIERCE	FELONY CLASS B	INCOMPLETE	11/20/2015	0	0	.	41
WSH	3321	GRAYS HARBOR	FELONY CLASS C	INCOMPLETE	11/23/2015	1	1	.	38
WSH	3322	PIERCE	FELONY CLASS A	INCOMPLETE	11/23/2015	0	0	.	38
WSH	3696	PIERCE	FELONY CLASS A	BED OFFERED	9/25/2015	0	14	67	.
WSH	3697	PIERCE	FELONY CLASS C	CANCELLED	11/13/2015	21	21	28	.
WSH	3698	PIERCE	FELONY	INCOMPLETE	11/18/2015	1	0	.	43
WSH	3699	PIERCE	FELONY CLASS C	INCOMPLETE	11/18/2015	1	1	.	43
WSH	3700	PIERCE	FELONY CLASS C	INCOMPLETE	11/19/2015	4	20	.	42
WSH	3701	CLARK	FELONY CLASS C	INCOMPLETE	11/20/2015	3	3	.	41
WSH	3702	SNOHOMISH	FELONY CLASS A	INCOMPLETE	11/23/2015	0	0	.	38

WSH	3703	PIERCE	FELONY CLASS B	INCOMPLETE	11/24/2015	1	1	.	37
WSH	3704	PIERCE	MISDEMEANOR	BED OFFERED	11/24/2015	1	14	21	.
WSH	3705	KING	FELONY CLASS B	INCOMPLETE	11/25/2015	0	0	.	36
WSH	3706	KITSAP	GROSS MISDEMEANOR	BED OFFERED	11/25/2015	7	7	22	.
WSH	3707	PIERCE	FELONY CLASS B	INCOMPLETE	11/25/2015	6	6	.	36
WSH	3708	PIERCE	FELONY CLASS B	BED OFFERED	11/25/2015	5	5	7	.
WSH	3709	PIERCE	MISDEMEANOR	BED OFFERED	11/25/2015	6	10	27	.
WSH	3710	PIERCE	FELONY CLASS A	INCOMPLETE	11/30/2015	0	0	.	31
WSH	3711	THURSTON	FELONY CLASS C	INCOMPLETE	11/30/2015	0	0	.	31
WSH	3712	KING	FELONY CLASS B	BED OFFERED	12/1/2015	0	0	0	.
WSH	3713	CLARK	FELONY CLASS C	INCOMPLETE	12/2/2015	6	6	.	29
WSH	3714	KING	FELONY CLASS B	BED OFFERED	12/2/2015	0	0	0	.
WSH	3715	PIERCE	FELONY CLASS B	INCOMPLETE	12/2/2015	1	1	.	29
WSH	3716	PIERCE	FELONY CLASS B	INCOMPLETE	12/2/2015	1	1	.	29
WSH	3717	PIERCE	FELONY CLASS B	BED OFFERED	12/2/2015	1	1	6	.
WSH	3718	PIERCE	FELONY CLASS C	INCOMPLETE	12/2/2015	1	1	.	29
WSH	3719	PIERCE	FELONY CLASS C	INCOMPLETE	12/2/2015	6	7	.	29
WSH	3720	SNOHOMISH	MISDEMEANOR	BED OFFERED	12/2/2015	1	1	16	.
WSH	3721	THURSTON	MISDEMEANOR	BED OFFERED	12/2/2015	1	1	13	.
WSH	3722	GRAYS HARBOR	FELONY CLASS C	INCOMPLETE	12/3/2015	0	0	.	28
WSH	3723	JEFFERSON	FELONY CLASS C	BED OFFERED	12/4/2015	11	11	20	.
WSH	3724	PIERCE	MISDEMEANOR	BED OFFERED	12/4/2015	0	12	20	.
WSH	3725	KING	FELONY CLASS B	INCOMPLETE	12/7/2015	0	0	.	24
WSH	3726	KING	FELONY CLASS C	INCOMPLETE	12/7/2015	0	0	.	24
WSH	3727	THURSTON	MISDEMEANOR	BED OFFERED	12/7/2015	0	0	9	.
WSH	3728	THURSTON	MISDEMEANOR	BED OFFERED	12/7/2015	0	0	10	.
WSH	3729	CLARK	MISDEMEANOR	BED OFFERED	12/8/2015	6	6	20	.
WSH	3730	SNOHOMISH	FELONY CLASS B	BED OFFERED	12/8/2015	0	0	0	.
WSH	3731	PIERCE	FELONY CLASS C	INCOMPLETE	12/9/2015	9	13	.	22

WSH	3732	CLARK	FELONY CLASS C	INCOMPLETE	12/10/2015	1	1	.	21
WSH	3733	KING	FELONY CLASS B	BED OFFERED	12/10/2015	0	0	0	.
WSH	3734	KING	MISDEMEANOR	BED OFFERED	12/10/2015	1	1	20	.
WSH	3735	SNOHOMISH	FELONY CLASS C	INCOMPLETE	12/10/2015	1	5	.	21
WSH	3736	CLARK	FELONY CLASS B	INCOMPLETE	12/11/2015	3	3	.	20
WSH	3737	THURSTON	MISDEMEANOR	BED OFFERED	12/11/2015	3	3	.	.
WSH	3738	KING	FELONY CLASS B	INCOMPLETE	12/14/2015	0	0	.	17
WSH	3739	MASON	FELONY CLASS C	INCOMPLETE	12/14/2015	0	0	.	17
WSH	3740	KING	FELONY CLASS C	INCOMPLETE	12/15/2015	0	0	.	16
WSH	3741	KING	FELONY CLASS C	INCOMPLETE	12/15/2015	1	1	.	16
WSH	3742	CLARK	FELONY CLASS C	INCOMPLETE	12/16/2015	0	0	.	15
WSH	3743	KING	FELONY CLASS C	INCOMPLETE	12/16/2015	0	0	.	15
WSH	3744	KING	MISDEMEANOR	BED OFFERED	12/16/2015	1	1	.	.
WSH	3745	KING	FELONY	INCOMPLETE	12/22/2015	0	0	.	9
WSH	3746	KING	FELONY CLASS B	BED OFFERED	12/22/2015	0	0	0	.
WSH	3747	KING	FELONY CLASS B	BED OFFERED	12/22/2015	0	0	0	.
WSH	3748	KITSAP	FELONY CLASS C	INCOMPLETE	12/22/2015	1	1	.	9
WSH	3749	PIERCE	FELONY CLASS C	BED OFFERED	12/22/2015	0	0	0	.
WSH	3750	SNOHOMISH	FELONY CLASS C	INCOMPLETE	12/22/2015	1	1	.	9
WSH	3751	KING	FELONY CLASS B	BED OFFERED	12/23/2015	0	0	0	.
WSH	3752	KING	FELONY CLASS C	INCOMPLETE	12/23/2015	0	0	.	8
WSH	3753	KING	FELONY CLASS C	BED OFFERED	12/23/2015	0	0	0	.
WSH	3754	KING	FELONY CLASS B	BED OFFERED	12/28/2015	0	0	0	.
WSH	3755	KING	GROSS MISDEMEANOR	INCOMPLETE	12/28/2015	0	0	.	3
WSH	3756	PIERCE	FELONY CLASS C	BED OFFERED	12/29/2015	0	0	0	.
WSH	3757	PIERCE	FELONY CLASS C	BED OFFERED	12/31/2015	0	0	0	.
ESH	2335	CHELAN	FELONY	ADMISSION	8/28/2015	3	3	103	.
ESH	2654	OKANOGAN	FELONY	ADMISSION	9/4/2015	0	0	103	.
ESH	2656	BENTON	FELONY	ADMISSION	9/8/2015	15	15	100	.

ESH	2657	WALLA WALLA	FELONY	ADMISSION	9/8/2015	3	3	98	.
ESH	2658	SPOKANE	FELONY	ADMISSION	9/11/2015	0	3	94	.
ESH	2663	BENTON	MISDEMEANOR	ADMISSION	9/25/2015	0	0	84	.
ESH	2664	CHELAN	FELONY	ADMISSION	9/28/2015	0	0	79	.
ESH	2665	BENTON	FELONY	ADMISSION	9/29/2015	0	0	79	.
ESH	3020	BENTON	FELONY	ADMISSION	9/24/2015	0	0	83	.
ESH	3020	BENTON	FELONY	ADMISSION	9/24/2015	0	0	84	.
ESH	3025	BENTON	FELONY	ADMISSION	10/21/2015	0	0	.	71
ESH	3026	BENTON	FELONY	ADMISSION	10/21/2015	0	0	.	71
ESH	3326	YAKIMA	FELONY	ADMISSION	11/2/2015	2	2	.	59
ESH	3327	BENTON	FELONY	ADMISSION	11/5/2015	0	0	.	56
ESH	3329	BENTON	FELONY	ADMISSION	11/12/2015	1	4	36	.
ESH	3330	GRANT	FELONY	ADMISSION	11/17/2015	0	0	.	44
ESH	3332	SPOKANE	FELONY	ADMISSION	11/20/2015	0	.	.	41
ESH	3333	BENTON	FELONY	ADMISSION	11/25/2015	0	5	22	.
ESH	3340	FRANKLIN	FELONY	ADMISSION	10/27/2015	42	42	.	65
ESH	3346	FRANKLIN	FELONY	ADMISSION	10/27/2015	42	42	.	65
ESH	3347	CHELAN	MISDEMEANOR	ADMISSION	11/23/2015	9	9	.	38
ESH	3758	SPOKANE	FELONY	ADMISSION	8/20/2015	5	5	113	.
ESH	3759	SPOKANE	FELONY	ADMISSION	8/24/2015	0	0	109	.
ESH	3760	CHELAN	FELONY	ADMISSION	8/31/2015	1	1	100	.
ESH	3761	SPOKANE	MISDEMEANOR	ADMISSION	9/16/2015	1	1	89	.
ESH	3762	CHELAN	MISDEMEANOR	ADMISSION	10/6/2015	24	24	71	.
ESH	3763	YAKIMA	FELONY	ADMISSION	10/13/2015	1	0	78	.
ESH	3764	SPOKANE	FELONY	ADMISSION	12/3/2015	0	0	.	28
ESH	3765	CHELAN	FELONY	ADMISSION	12/7/2015	1	1	.	24
ESH	3766	STEVENS	FELONY	ADMISSION	12/15/2015	0	.	.	16
ESH	3767	PEND OREILLE	FELONY	ADMISSION	12/17/2015	1	1	.	14
ESH	3768	YAKIMA	FELONY	ADMISSION	12/18/2015	0	0	.	13
ESH	3769	CHELAN	MISDEMEANOR	ADMISSION	12/22/2015	0	.	.	9