

***Cassie Cordell Trueblood, et al., v. Washington State Department  
of Social and Health Services, et al.***  
***Case No. C14-1178 MJP***  
**Monthly Report to the Court Appointed Monitor**

**February 15, 2016**

Behavioral Health Administration  
Division of State Hospitals  
PO Box 45050  
Olympia, WA 98504-5050  
(360) 725-2260  
Fax: (360) 407-0304



## TABLE OF CONTENTS

Background.....	Page 3
Class Member Status Information.....	Page 4
Class Member Status Data Tables.....	Page 6
Class Member Status Data Graphs.....	Page 9
Resources Required to Provide Timely Competency Services.....	Page 12
Key Accomplishments—January 2016.....	Page 17
<i>Trueblood</i> Implementation Steps Taken and Planned: January 2016.....	Page 18
Appendix A: Class Member—Evaluation Information for December 2015.....	Page 48
Appendix B: Class Member—Restoration Information for December 2015.....	Page 64
Appendix C: Class Member—Evaluation Information for January 2016.....	Page 71
Appendix D: Class Member—Restoration Information for January 2016.....	Page 83

## **Background**

On April 2, 2015, the Court ordered the Department of Social and Health Services (DSHS) to file monthly reports with the *Trueblood* Court Monitor on efforts to comply with Court orders to provide timely competency evaluation and restoration services to Class Members:

*“Defendants shall file a report with the Monitor on the fifth day of every month, which shall include:*

- (1) the number of days between when a court ordered provision of competency services and when provision was completed, for each person ordered to receive competency services during the previous month;*
- (2) data regarding the number of evaluators, bed capacity, physicians, and other resources needed to provide timely competency services;*
- (3) the steps taken in the previous month to implement this order;*
- (4) when and what results are intended to be realized by each of these steps;*
- (5) the results realized in the previous month;*
- (6) the steps planned to be taken in the following month;*
- (7) certification by Defendants that they are fully compliant with all deadlines that became due in the previous month;*
- (8) Defendants’ estimate for when the wait times will reach seven days or less, and all data relied on in making that estimate; and*
- (9) any other information the Monitor informs Defendants is necessary for the Monitor to fully review Defendants’ actions and advise the Court.”*

The following report is submitted this 15th day of February, 2016 and covers the events of January, 2016. The 2<sup>nd</sup> day of January, 2016 represented the initial deadline set by the Court for full compliance with the seven day requirement for completing competency evaluations in jail, admitting defendants for in-patient evaluations, and admitting patients for competency restoration services upon a finding that they are not competent to stand trial. On December 30, 2015, having found that we would not be able to meet these deadlines despite our continuing efforts toward doing so as laid out in our preceding monthly reports, DSHS submitted a motion to modify the Court’s injunction, seeking an extension of the deadline to May 27, 2016. On January 2, 2016 DSHS was not in full compliance with the Court’s seven day requirements for providing competency evaluation services or restoration services. On February 8, the Court issued an Order granting the motion for an extension with certain additional requirements and benchmarks leading up to May 27, 2016. As of January, 2016, the period covered by this report, we continued to work toward compliance with the Court’s initial April 2, 2015 order. In future monthly reports we will address our compliance with the Court’s February 8 Order and the specific benchmarks that it sets.

## **Class Member Status Information**

This report provides the class member data for Competency Services displayed in two periods—December 1, 2015-December 31, 2015 and January 1, 2016-January 31, 2016. The December data is considered “mature” and the January data is a first look data set. April 2015 is the baseline month for data analysis.

The data is organized first into tables and graphs that show the trends forming over time.

Specific class member information is included in the following appendices to this report:

Appendix A: Class Member—Evaluation Information for December 2015

Appendix B: Class Member—Restoration Information for December 2015

Appendix C: Class Member—Evaluation Information for January 2016

Appendix D: Class Member—Restoration Information for January 2016

## **Analysis of Data: April 1, 2015 through December 31, 2015**

- Orders received of all types were up in December from November, but at approximately the average level over the measured period. Inpatient evaluations had the largest percentage increase, but due to their relative infrequency the increase represents only six additional cases.
- Data for jail-based evaluations shows improvement through December and into January at both hospitals. Although December saw a decrease at WSH in the number of evaluations completed in 7 days, the median and average times continued to move lower as they have in previous months. This trend has continued into January. At ESH we have seen continuing improvements in all measures for jail-based evaluations through December and January.
- Data for restorations and in-patient evaluations continues to show high wait times as additional restoration beds had only begun to come online. Initial January numbers begin to show improvement at ESH, where 15 additional beds added in late December represent a substantial increase relative to monthly referrals. Figures for WSH show more modest improvements which may be tied to the additional beds in Ward S4.

## **Outlier cases in which defendants waited more than 100 days**

For evaluations, class member 3770 and 2465 from WSH shows wait times of 119 days and 105 days, respectively. However, on review these referrals were found to be withdrawn. At ESH, class members 2328, 2531, 3378, 4065, 2566, and 2578 show wait times of 105, 113, 119, 141, 108, and 102 days, respectively, referencing the longer of the wait times between December and January. Delays for these patients were tied to factors including 1.) transfers between orders for jail-based or inpatient evaluations for class member 2328, 2.) defendant cooperation and attorney availability for class member 2531, 3.) transfers from custody to personal recognizance for class member 3378, 4.) a 118-day delay in the receipt of the order for class member 4065, and 5.) in two cases (class member 2566 and 2578) an error in the logging process in ESH’s electronic tracking system. For class members 2566 and 2578 our review found that although the orders were signed in September, the individuals were not initially

logged on the waiting list. This error caused a delay of approximately 60 days, and was discovered upon a manual review of the paper files for open referrals on November 2, 2015. Delays in scheduling and completion of these two evaluations at that time reflected in part the length of the waitlist and holiday schedules. On discussion of these issues with staff at ESH, we found that the failure to detect this issue sooner resulted from two factors. One was the practice as of September, 2015, of not checking the “waiting list” box within ESH’s data system until the discovery documents were received. This practice has been amended such that, currently, the “waiting list” box is checked immediately upon receipt of the court order. Accordingly these cases will now show up on the waiting list, even if all necessary documents have not been received. A second factor was the length of the backlog in October and November resulting in less frequent review of the paper files. At this time the paper files are reviewed more frequently to identify potential omissions from the waitlist.

For restorations, class members 2288, 2616, 2942, and 3000 from WSH show wait times of 116, 137, 132, and 100 days respectively, referencing the longer of the times between December and January. For class member 2616 the delay has been in part due to the patient’s refusal to cooperate in transfer. For class member 2942 the delay has been in part due to a delay in receiving medical clearance. At ESH, class members 2335, 2654, 2656, 3406, 3407, 3408 show wait times of 103, 103, 100, 113, 109, and 100 days, respectively, each for December. For ESH we had no restoration cases over 100 days for January. At ESH, inpatient evaluation class member 3794 shows a completion time of 117 days for December and inpatient class member 4018 shows a wait time of 108 days for January. For restoration and inpatient evaluations, the wait times continue to reflect limited bed space as in previous months, although the January data suggests some improvement at ESH.

**Class Member Status Data Tables (January data is “First Look” and subject to change)**

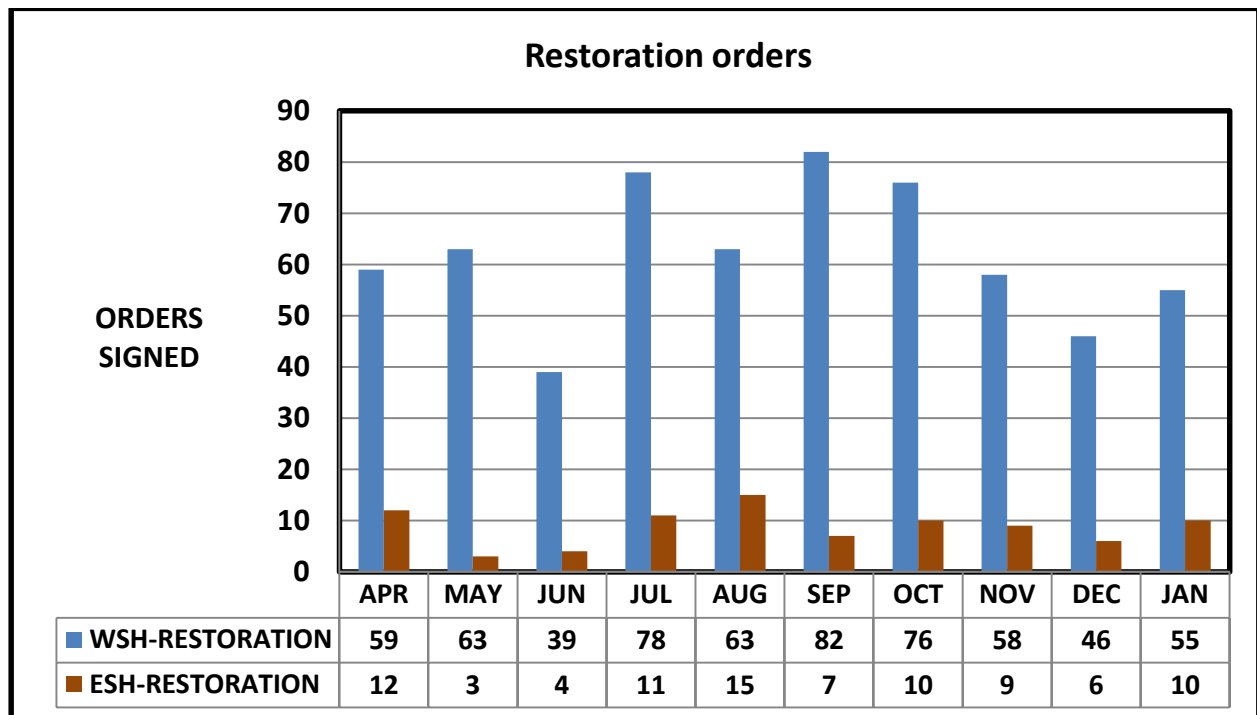
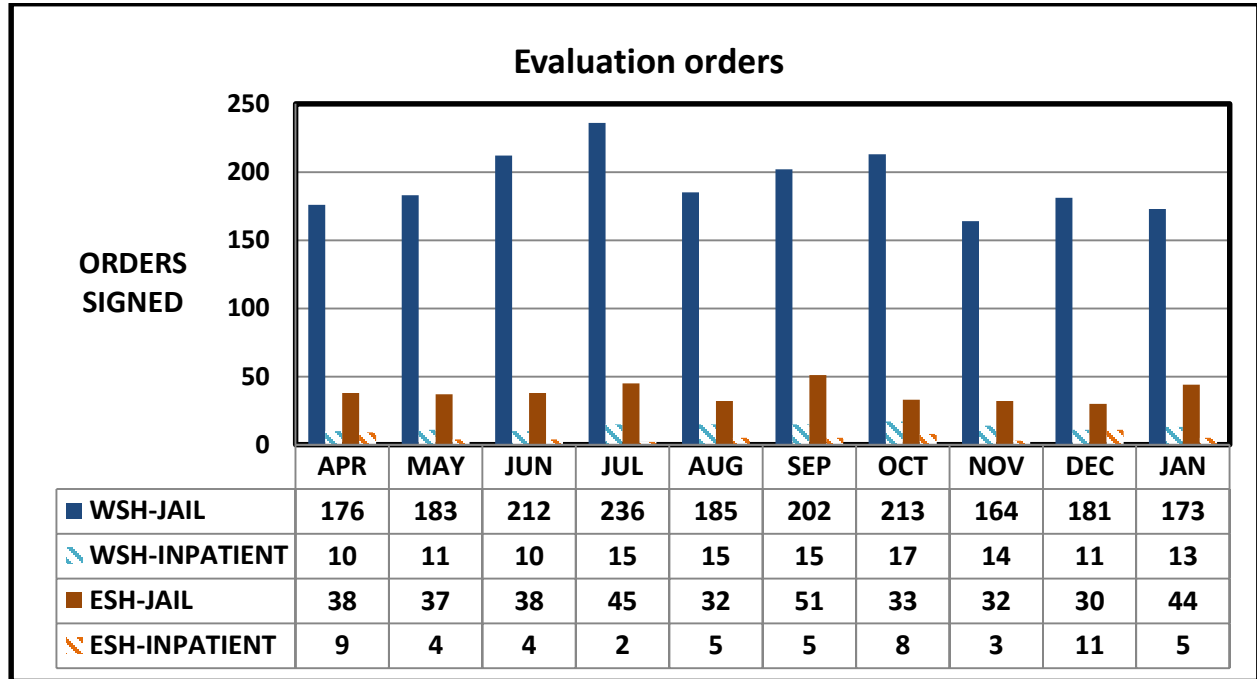
WESTERN STATE HOSPITAL		Court Orders Signed	Days from order signature to:								Percent complete within 7 days of order
			hospital receipt of order		hospital receipt of discovery		end of reporting month for incomplete referrals		completion		
			Average	Median	Average	Median	Average	Median	Average	Median	
Jail-based Evaluation	APR.	176	1.3	0.0	1.9	1.0	9.5	6.0	14.6	14.0	14%
	MAY	183	1.3	0.0	1.6	0.0	11.4	9.0	13.0	11.0	16%
	JUN.	212	1.7	0.0	2.1	1.0	10.9	8.0	17.8	15.0	10%
	JUL.	236	1.4	0.0	1.8	0.0	12.3	9.0	18.4	17.0	6%
	AUG.	185	1.9	0.0	2.2	0.0	13.4	11.0	20.7	20.0	7%
	SEP.	202	1.6	0.0	1.7	0.0	11.7	8.0	17.6	16.0	10%
	OCT.	213	1.9	0.0	2.0	0.0	16.7	15.0	16.4	15.0	19%
	NOV.	164	1.8	0.0	1.9	0.0	18.0	13.0	16.0	14.0	28%
	DEC.	195	1.6	0.0	1.7	0.0	13.7	8.5	15.5	14.0	14%
	JAN.	173	1.3	0.0	1.3	0.0	15.5	9.0	13.3	12.0	30%
Inpatient Evaluation	APR.	10	5.8	1.0	5.8	1.0	10.7	7.0	22.2	18.0	22%
	MAY	11	2.9	2.0	2.9	2.0	11.4	13.0	18.9	20.0	8%
	JUN.	10	3.0	1.0	3.0	1.0	14.0	12.0	12.3	15.0	25%
	JUL.	15	3.5	1.0	3.5	1.0	16.6	9.0	14.8	15.0	20%
	AUG.	15	4.5	1.0	4.5	1.0	10.0	11.0	25.5	17.0	7%
	SEP.	15	2.6	1.0	2.6	1.0	15.1	16.0	19.7	20.0	11%
	OCT.	17	1.5	1.0	1.5	1.0	19.0	19.0	23.6	22.0	0%
	NOV.	14	1.7	1.0	1.7	1.0	14.1	12.0	23.9	22.0	6%
	DEC.	11	4.1	1.0	4.1	1.0	13.1	12.0	22.2	27.0	10%
	JAN	13	4.0	1.0	4.0	1.0	12.2	11.0	24.7	23.0	0%
Inpatient Restoration	APR.	59	1.8	1.0	1.8	1.0	37.2	16.0	38.6	44.0	24%
	MAY	63	1.8	1.0	2.1	1.0	35.9	19.0	26.2	15.0	25%
	JUN.	39	1.7	1.0	2.1	1.0	16.8	8.0	34.2	25.0	7%
	JUL.	78	1.7	1.0	2.1	1.0	16.1	10.0	20.8	15.0	25%
	AUG.	63	2.1	1.0	2.1	1.0	22.5	19.0	23.6	33.0	24%
	SEP.	82	1.7	1.0	2.0	1.0	24.3	15.0	23.0	14.0	26%
	OCT.	76	1.8	1.0	2.1	1.0	21.2	23.0	32.1	45.0	20%
	NOV.	58	1.2	1.0	1.4	1.0	31.9	28.0	33.5	47.0	24%
	DEC.	66	1.5	1.0	2.0	1.0	27.3	22.0	39.0	48.0	19%
	JAN	55	1.1	0.0	1.3	0.0	30.2	20.0	33.8	44.5	23%

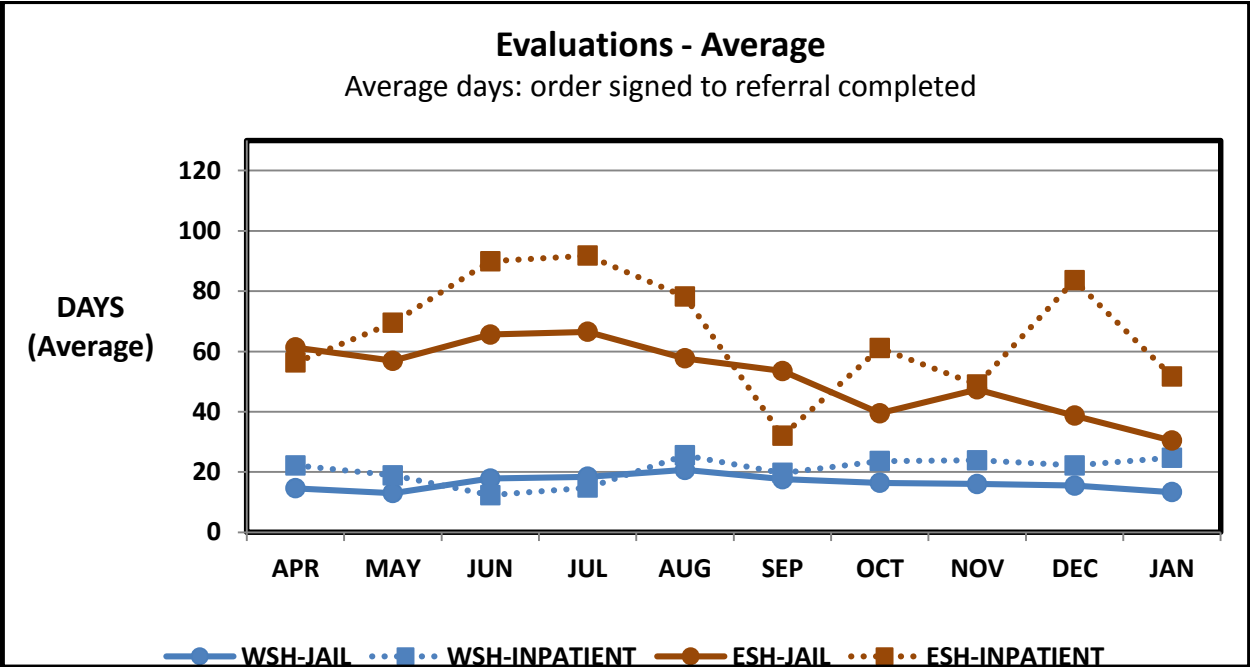
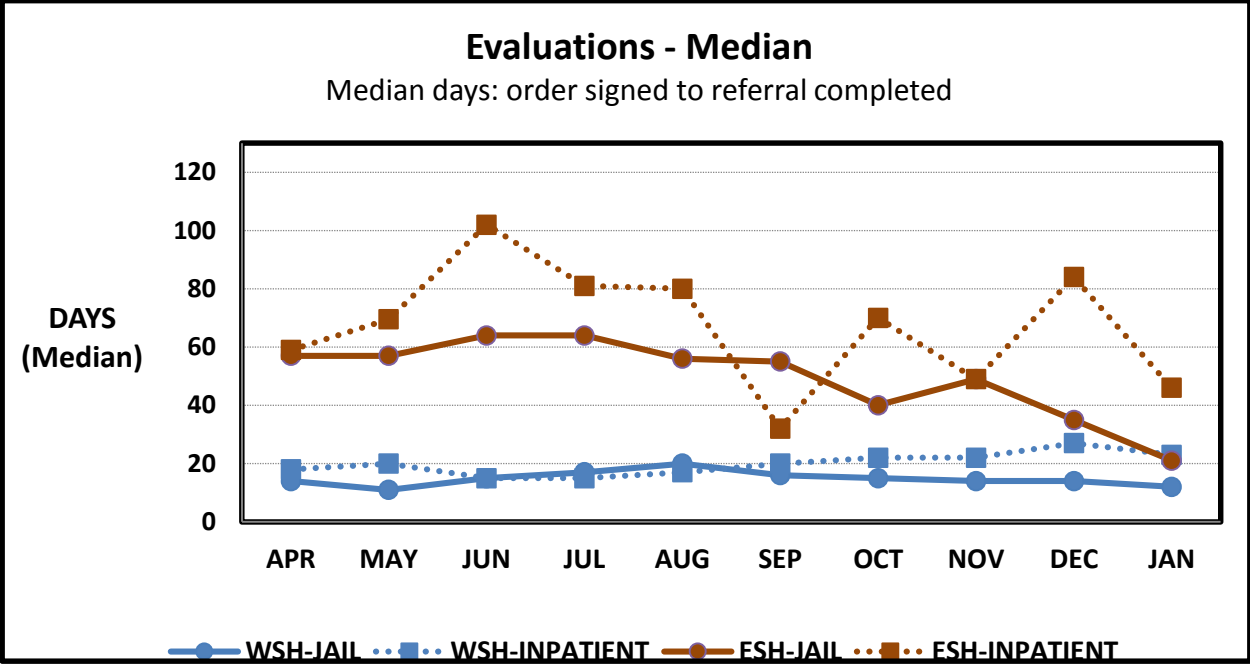
EASTERN STATE HOSPITAL		Court Orders Signed	Days from order signature to:								Percent complete within 7 days of order
			hospital receipt of order		hospital receipt of discovery		end of month for incomplete referrals		completion		
			Average	Median	Average	Median	Average	Median	Average	Median	
Jail-based Evaluation	APR.	38	4.6	1.0	8.6	5.0	28.1	28.0	61.3	57.0	0%
	MAY	37	4.3	1.0	8.8	6.0	37.0	33.0	56.9	57.0	0%
	JUN.	38	4.1	1.0	8.3	6.0	38.0	39.0	65.6	64.0	0%
	JUL.	45	4.2	1.0	8.9	6.0	32.6	30.0	66.5	64.0	0%
	AUG.	32	2.4	1.0	6.4	5.0	33.4	32.0	57.7	56.0	3%
	SEP.	51	2.3	1.0	4.9	4.0	29.1	14.0	53.5	55.0	3%
	OCT.	33	1.9	0.0	4.9	4.0	16.4	10.0	39.5	40.0	3%
	NOV.	32	1.8	0.0	5.9	5.0	28.3	26.0	47.4	49.0	0%
	DEC.	48	1.7	0.0	3.2	1.0	21.7	18.0	38.7	35.0	3%
	JAN.	44	4.4	0.0	6.5	1.0	28.4	23.0	30.4	21.0	12%
Inpatient Evaluation	APR.	9	8.9	1.0	13.9	5.0	47.9	43.0	56.3	59.0	0%
	MAY	4	10.1	1.0	14.2	5.0	65.8	61.0	69.5	69.5	0%
	JUN.	4	7.7	1.0	11.1	5.0	75.2	68.0	89.9	102.0	0%
	JUL.	2	7.5	1.0	11.4	5.0	50.9	14.0	91.8	81.0	0%
	AUG.	5	10.2	1.0	19.6	5.0	44.5	31.0	78.2	80.0	0%
	SEP.	5	6.7	1.0	10.2	4.0	42.6	47.0	32.0	32.0	0%
	OCT.	8	2.0	1.0	7.9	6.0	28.9	16.0	61.1	70.0	0%
	NOV.	3	2.8	0.0	9.6	7.0	44.2	46.0	49.0	49.0	0%
	DEC.	12	2.4	1.0	4.2	2.0	21.1	20.5	83.6	84.0	0%
	JAN.	5	6.1	1.0	10.6	2.0	33.2	32.0	51.7	46.0	0%
Inpatient Restoration	APR.	12	6.8	1.0	8.1	1.0	25.3	22.0	0.0	0.0	100%
	MAY	3	6.3	1.0	7.9	2.0	35.0	41.0	54.7	62.0	0%
	JUN.	4	0.6	1.0	1.8	1.0	45.3	39.0	46.0	56.0	20%
	JUL.	11	1.3	0.0	4.5	2.0	16.2	11.0	45.3	56.0	33%
	AUG.	15	1.6	0.0	5.7	3.0	26.4	27.0	35.5	35.5	50%
	SEP.	7	1.5	0.0	4.6	1.0	37.2	35.0	20.4	1.0	57%
	OCT.	10	3.2	0.0	6.4	4.0	45.6	37.0	87.4	93.0	0%
	NOV.	9	2.4	0.0	4.1	2.0	51.7	48.0	90.8	92.0	0%
	DEC.	6	3.8	0.0	4.2	0.5	26.3	20.0	84.7	86.5	0%
	JAN.	10	1.0	0.0	1.2	0.0	16.2	10.5	61.4	59.0	0%

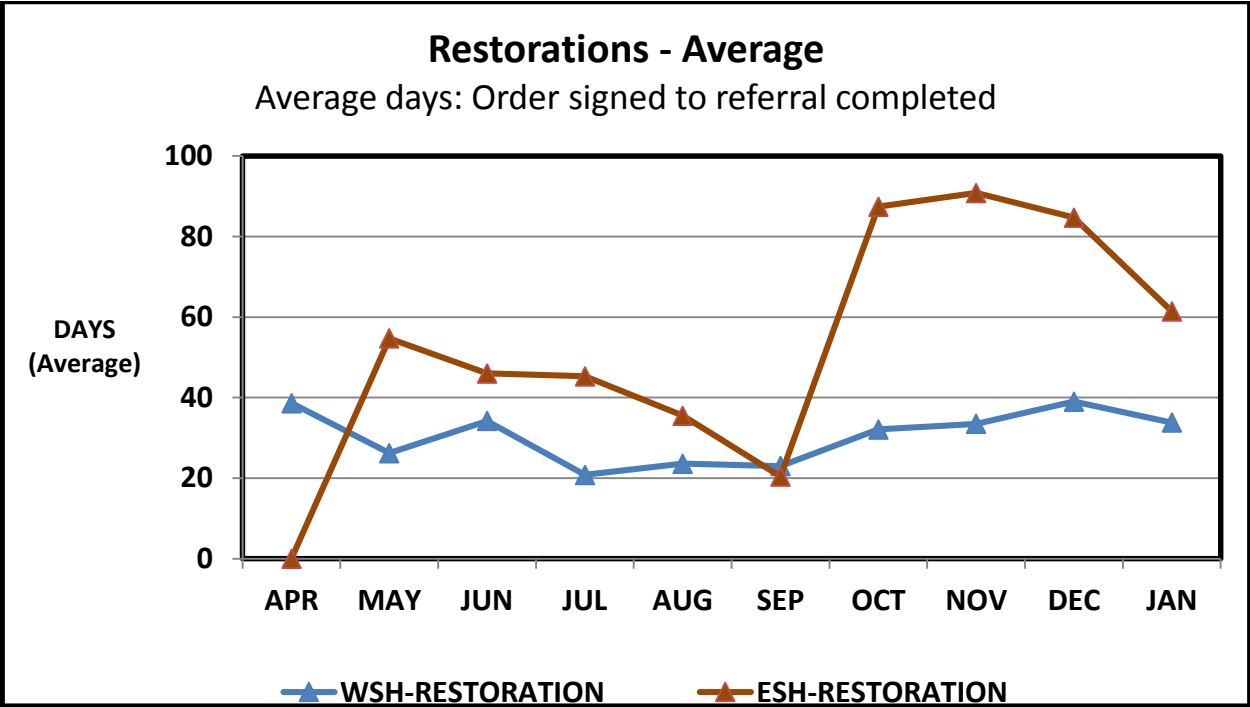
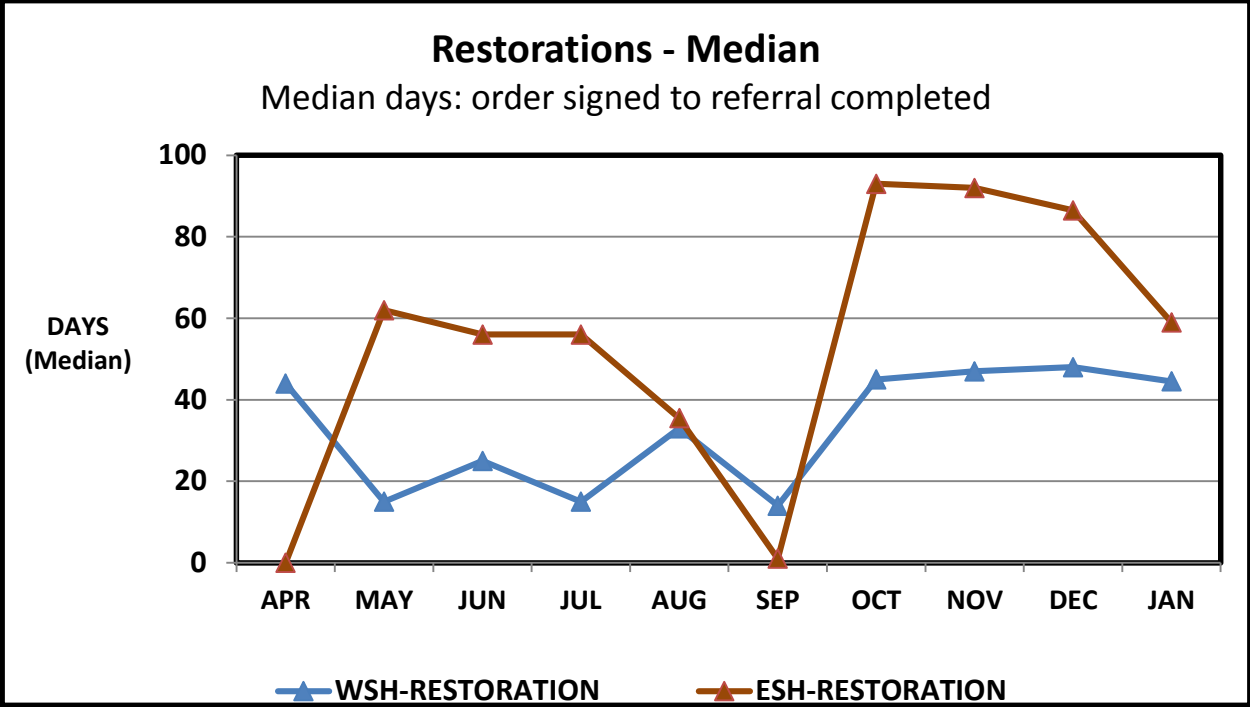
TOTALS BOTH HOSPITALS		Court Orders Signed	Days from order signature to:								Percent complete within 7 days of order
			hospital receipt of order		hospital receipt of discovery		end of month for incomplete referrals		completion		
			Average	Median	Average	Median	Average	Median	Average	Median	
Jail-based Evaluation	APR.	214	2.1	0.0	3.5	1.0	17.8	10.0	20.3	14.0	12%
	MAY	217	2.1	0.0	3.2	1.0	22.1	13.0	18.2	12.0	14%
	JUN.	250	2.3	1.0	3.6	1.0	20.8	13.0	24.1	17.0	9%
	JUL.	281	2.0	0.0	3.3	1.0	17.9	11.0	26.5	19.0	5%
	AUG.	217	2.0	0.0	3.0	1.0	19.7	13.0	25.4	21.0	6%
	SEP.	253	1.8	0.0	2.5	1.0	16.0	9.0	22.9	18.0	9%
	OCT.	246	1.9	0.0	2.5	1.0	16.6	11.0	19.2	16.0	17%
	NOV.	196	1.8	0.0	2.8	1.0	21.6	17.0	20.5	16.0	23%
	DEC.	243	1.6	0.0	2.1	0.0	16.2	10.0	20.4	15.0	11%
	JAN.	217	2.1	0.0	2.4	0.0	16.0	9.0	19.0	13.0	25%
Inpatient Evaluation	APR.	19	7.8	1.0	11.0	3.0	39.9	33.0	45.1	48.5	9%
	MAY	15	7.3	1.0	9.7	3.0	55.3	47.0	50.9	25.0	5%
	JUN.	14	5.9	1.0	8.0	3.0	65.0	54.0	44.4	18.0	15%
	JUL.	17	5.7	1.0	7.8	3.0	49.9	15.0	14.8	15.0	20%
	AUG.	20	6.9	1.0	8.4	2.0	33.0	17.0	53.9	29.0	5%
	SEP.	20	4.3	1.0	5.7	1.0	39.4	22.0	20.4	20.0	10%
	OCT.	25	2.4	1.0	4.3	1.0	27.6	19.0	30.8	24.0	0%
	NOV.	17	2.0	1.0	3.9	1.0	30.8	18.0	26.4	22.0	5%
	DEC.	23	3.3	1.0	4.1	1.0	17.8	14.0	47.5	29.0	6%
	JAN.	18	5.0	1.0	7.0	1.0	26.5	25.0	32.6	28.0	0%
Inpatient Restoration	APR.	71	1.5	0.0	2.2	1.0	35.3	16.0	37.6	43.0	26%
	MAY	66	1.5	0.0	1.9	0.0	35.8	20.0	27.8	18.0	24%
	JUN.	43	1.6	0.0	2.0	1.0	20.6	13.0	34.9	25.0	20%
	JUL.	89	1.4	0.0	1.9	0.0	16.1	10.0	24.5	20.0	26%
	AUG.	78	1.9	0.0	2.4	0.0	23.5	20.0	24.0	33.0	25%
	SEP.	89	1.6	0.0	2.1	0.0	27.6	21.0	22.7	13.0	29%
	OCT.	86	2.1	1.0	2.9	1.0	26.9	25.0	32.1	45.0	20%
	NOV.	67	1.5	1.0	2.0	1.0	37.2	34.0	42.1	49.0	21%
	DEC.	72	1.8	1.0	2.3	1.0	27.5	23.0	47.4	52.0	15%
	JAN.	65	1.1	0.0	1.2	0.0	27.6	18.0	38.2	47.5	20%



Class Member Status Data Graphs (January data is "First Look" and subject to change)







## **Resources Required to Provide Timely Competency Services**

### **Need Projections and Bed Capacity**

The investment made by the Legislature in the 15-17 biennial budget and the short and long-term strategies that are being undertaken will enable Washington to provide competency services within the seven-day time frames established by the Court. Washington is making every effort to provide competency services within the seven-day standard as soon as is possible.

In previous months we have recognized that due to setbacks including the impact of the CMS survey on limiting our ability to add capacity at the state hospitals, we would not be able to meet the Court's initial January 2, 2016 deadline for providing competency restoration and evaluation services within seven days. We submitted a motion on December 30, 2015, requesting that the Court extend the initial deadline and allow until May 27, 2016 in order for DSHS to achieve full compliance with the Court's order. This motion was granted on February 8, 2016 with certain additional requirements and benchmarks set out by the Court. We will therefore continue to work toward meeting the May 27, 2016 deadline as well as the intermediary benchmarks, and anticipate that we will be able to do so.

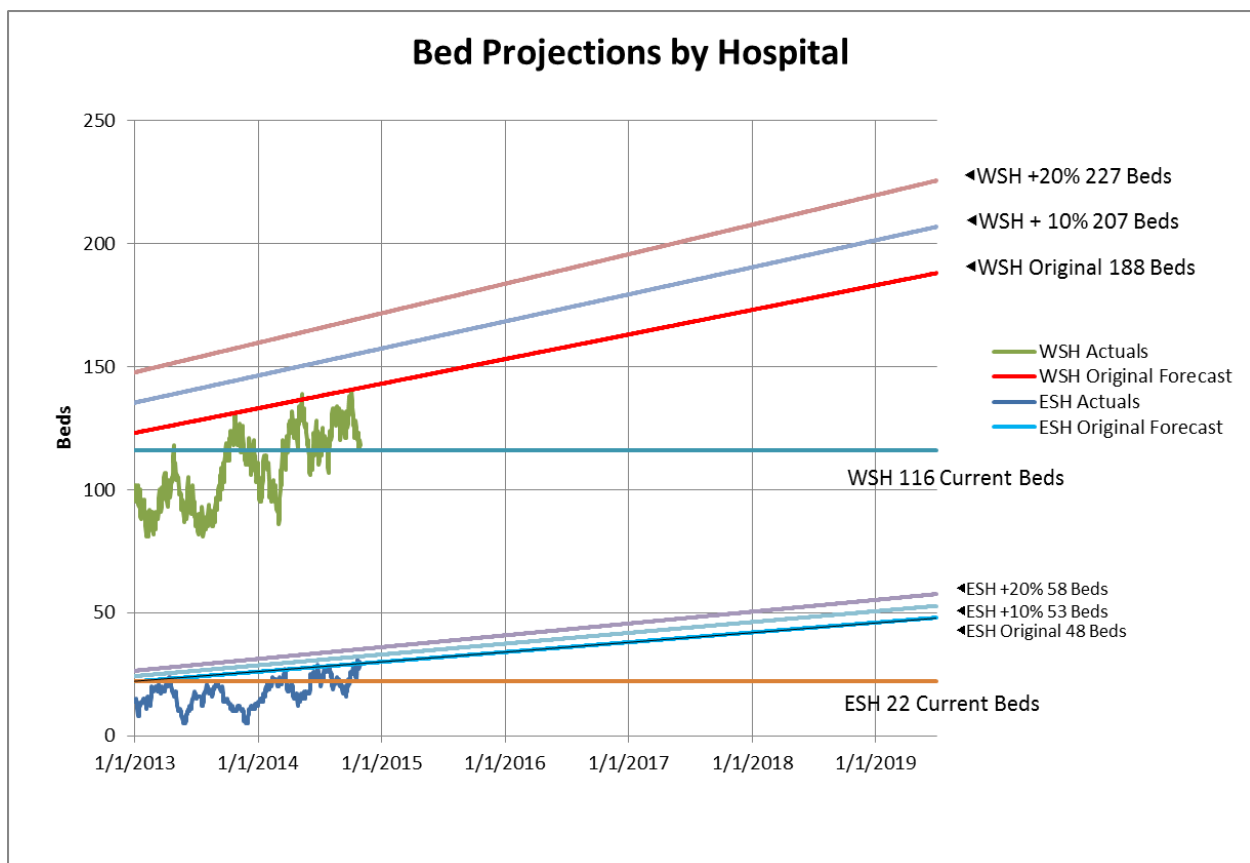
The primary issue in meeting these deadlines continues to be our ability to expand overall capacity in providing competency evaluation and restoration services. As early as July, 2015 we were able to begin adding new forensic evaluators at both hospitals. However, the process for adding restoration capacity has required substantial investments that carry a longer lead time. With January's data, we are pleased to be seeing progress in both areas.

For evaluation services, in late 2015 we have begun to see substantial impact from the new evaluators, and this impact is more apparent in January, 2016. As of the end of January, the longstanding list of unassigned referrals for jail-based evaluations out of WSH and ESH have essentially been removed. Figures for the North Regional Office, associated with WSH, show that the waitlist has been reduced but not completely eliminated. This progress is illustrated in January's data for median and average completion times, and we expect these numbers to improve further for February. We note that this reduction in the waitlist does not mean that referrals can immediately be seen by an evaluator in every case; aside from individualized delays for reasons such as attorney availability, there continue to be "rushes" of referrals that cause the waitlist to grow and recede over the short term. However, these reductions in the waitlist will allow us more closely to examine the factors that continue to delay the evaluation process beyond seven days.

For restoration services, we appear to be seeing some improvement in wait times at ESH with the addition of 15 new beds in the 3S ward. At WSH, we have also noted the addition of 15 beds in the S4 ward. However, we expect more substantial reduction of the waitlist for restorations and inpatient evaluations to rely on the addition of beds at the Maple Lane and Yakima facilities. We expect for this process to continue as each facility comes on line so that we can meet each of the Court's incremental deadlines leading up to May 27, 2016.

The anticipated compliance dates are based on the estimates and data, detailed below, that were included in the Long Term Plan dated July 2015 and subsequent monthly reports.

Fiscal and program staff from DSHS and the Washington State Office of Financial Management modeled additional bed capacity needed to meet a seven-day standard for admission with assumptions of increases in demand at ten percent and twenty percent. The following graph illustrates the model as applied to WSH and ESH.



For mentally ill defendants ordered to receive competency restoration treatment, additional inpatient forensic hospital bed capacity must be developed or made available. Based on projections in the chart above, it is estimated that compliance with a seven-day standard will require 90 beds during the 15-17 biennium.

## 2015-2017 Biennial Budget to Support Improvements to the Forensic Mental Health System

The two-year operating budget for the period of July 1, 2015 to June 30, 2017 (hereafter referred to as the 15-17 biennial budget), enacted by the Legislature on June 29, 2015 and signed by Governor Jay Inslee on June 30, 2015, includes an investment of \$40.5 million in new funding. Table One details the funding provided in the 15-17 biennial budget.

**Table One: New Forensic Mental Health System Funding in the 15-17 Biennial Budget**

Budget Item	FTE's	Dollars (Millions)
Competency Evaluation Staff	18.0	\$ 4.67
Competency Restoration Beds	129.2	\$26.86
Non-Felony Diversion	0.0	\$ 4.81
Office of Forensic Mental Health	11.0	\$ 4.18
<b>Total</b>	<b>158.2</b>	<b>\$40.52</b>

Table Two shows the increases for forensic evaluator and competency restoration bed capacity and Table Three details the specific new staff positions funded in the 15-17 biennial budget.

**Table Two: Increases in Forensic Evaluators & Competency Restoration Beds in 15-17 Biennial Budget**

Site	April 2015 Forensic Evaluator Positions (FTE)	15-17 Biennial Budget Increase (FTE)	Total Forensic Evaluator Capacity (FTE)	% Increase (FTE)	\$ Increase (Millions)	April 2015 Capacity (Beds)	15-17 Biennial Budget Increase (Beds)	Total Capacity (Beds)	% Increase (Beds)	\$ Increase (Millions)
ESH	6	5	11	83%	\$1.41	22	15	37	68%	\$13.41
WSH	24	8	32	30%	\$2.25	116	45	161	39%	\$4.47
TBD	N/A	N/A	N/A	N/A	N/A	0	30	30	N/A	\$8.97
<b>Total</b>	<b>30</b>	<b>13<sup>1</sup></b>	<b>43</b>	<b>40%</b>	<b>\$3.66</b>	<b>138</b>	<b>90</b>	<b>228</b>	<b>65%</b>	<b>\$26.86</b>

**Table Three: Specific new Staff Funded in the 15-17 Biennial Budget**

Position	Funded FTE	Description
Full Time Equivalents (FTE)	129.2	Direct care staff to operate 90 additional Competency Restoration treatment beds
Forensic Evaluators	13	Forensic Psychologists to conduct forensic evaluations
Forensic Evaluator Supervisor	2	Supervisory and leadership support for Forensic Evaluators
Forensic Evaluator Support	3	Staff to perform administrative and clerical tasks
Director of the Office of Forensic Mental Health	1	Lead Forensic Mental Health Services operations, as recommended in the forensic services consultant report
Data Manager	1	Develop standardized data reports to inform fiscal and program operations and improve data integrity as recommended by JLARC and Groundswell

<sup>1</sup> This figure does not include five Full Time Equivalents (FTE) for supervisory and administrative support that also are funded in the 15-17 biennial budget

Position	Funded FTE	Description
Data Analysts	2	<ul style="list-style-type: none"> <li>• Standardize systems to track and report program outcome data for competency and NGRI services</li> <li>• Build and maintain a statewide model for bed utilization and staffing needs</li> <li>• Create and maintain a centralized system for managing wait lists and admission decisions</li> <li>• Recommended by JLARC and Groundswell</li> </ul>
Technology Solutions Support	2	<ul style="list-style-type: none"> <li>• Build a technology solution to establish a common platform to transmit data between the State Hospitals and over 240 different jurisdictions to improve timeliness</li> <li>• Provide hands-on partner training across the system</li> <li>• 1 position funded only for the 15-17 biennium</li> </ul>
Competency Restoration Specialist	1	<ul style="list-style-type: none"> <li>• Develop alternative community-based competency restoration program options to address growing demand for forensic service</li> <li>• Coordinate development of criteria and a screening process to identify individuals appropriate to receive services in this setting</li> <li>• Quality assurance oversight of services provided in alternative settings</li> <li>• Recommended in Groundswell</li> </ul>
Workforce Development	2	<ul style="list-style-type: none"> <li>• Standardize and improve quality of competency services and NGRI treatment</li> <li>• Develop curriculum and provide training to the forensic psychology workforce across the state</li> <li>• Provide ongoing consultation and QA</li> <li>• Recommended in Groundswell</li> </ul>
Liaison and Diversion Specialist	1	<ul style="list-style-type: none"> <li>• Liaison with courts, jails, community mental health programs, RSNs, state hospitals and others to coordinate efforts to comply with <i>Trueblood</i> order</li> <li>• Create systems to ensure effective and efficient delivery of statewide forensic services</li> <li>• Coordinate stakeholder efforts to divert individuals with mental illness from criminal justice involvement</li> <li>• Coordinate community based treatment</li> <li>• Recommended by JLARC and the Groundswell</li> </ul>
Implementation Project Manager	1	<ul style="list-style-type: none"> <li>• Manage implementation to ensure requirements of the <i>Trueblood</i> decision are met in a timely manner</li> <li>• Project position for 15-17 biennium.</li> </ul>
Trueblood Report Manager	0	<ul style="list-style-type: none"> <li>• Report analysis, preparation and submittal</li> </ul>

		<ul style="list-style-type: none"><li>• Position not funded in the biennial budget, has been established and filled within existing funding to support <i>Trueblood</i> implementation</li><li>• Project position for the 15-17 biennium.</li></ul>
--	--	---



## **Trueblood Key Accomplishments--January 2016**

### **HIRING**

- We continue to focus on hiring to expand both our evaluation and restoration capacity. Recruiting, hiring and retaining a sufficient number of qualified staff to fill psychiatrist, psychologist, registered nurse, and social worker positions needed to fill vacancies to safely operate new and existing wards at the state hospitals has been an ongoing challenge. In recent months one element of our response to this challenge has been to contract for additional capacity at residential treatment facilities in Centralia and Yakima. Pursuant to the Maple Lane contract in Centralia, we are moving forward aggressively to hire DSHS staff positions that are designated to support the operation of the facility, while the private contractors have taken responsibility for providing medical and other professional staff. In recent weeks we sought and acquired temporary assistance in developing the DSHS staff positions for Maple Lane to stay on schedule through use of a non-permanent appointment.

### **RECRUITMENT**

- During a four week period ending in mid-January, identified and sourced four psychiatrists. Telephone interviews are being scheduled.
- Recruited a psychologist for an open forensic evaluator position at WSH. Candidate was to be interviewed during early February.
- A nurse and MHT hiring event was held in Spokane in late January. Nine MHTs, one PSA and an RN3 were identified and interviewed.
- Recruiting team attended job fair for soon-to-be LPNs at Bates Vocational/Technical School in Tacoma. Over 30 LPNs signed-up on the data sheet. Several of these were doing school related training at WSH. Bates will have a graduating class ready to become licensed in late February, early March. Students from the 2016 classes were also spoken with and encouraged to look at training opportunities as they arise at WSH. Overall, the event was well attended and organized and should be a good source of LPN applicants in the next several weeks.
- Maple Lane job announcements for RRCs and SGs were written and reviewed and positions have now been established and posted on [www.careers.wa.gov](http://www.careers.wa.gov). To date, the posting have received over 1,000 “hits” (people opening and reading the announcements). As of 2/8/16, there were 67 official applicants. (NOTE: There is interest in these positions from current staff at SCC, Green Hill School and Western State Hospital. Applicants not chosen for the Maple Lane project will be shared with those facilities to avoid a potential “domino effect”.)
- The position of Residential Services Manager at Maple Lane was established and the job announcement was prepared for posting on February 5.
- A job fair aimed at filling Maple Lane staffing needs for RRCs, SGs and maintenance was set for Friday, February 12. The fair will be held on-site. Some interviewing will occur. Recruiter is working with Employment Security Department, WorkSource, and the Thurston Chamber of Commerce to advertise and promote the fair.
- Formal interviews for RRC and SG positions at Maple Lane will be held in mid to late February.

### REDUCING STATEWIDE EVALUATION WAIT TIMES

- The wait lists at ESH and WSH for in-jail evaluations have been substantially reduced. This progress is discussed below.

### RESIDENTIAL TREATMENT FACILITIES

- Yakima: DSHS has now completed negotiations and finalized a contract with Central Washington Comprehensive Mental Health, to open up 24 Competency Restoration beds at the currently vacant Yakima County Correctional Center, effective March 1, 2015.
- Contractor Correct Care Recovery Services (CCRS) staff visited Washington January 13-14 for strategic planning purposes and to tour both forensic wards at WSH and the Cascade Cottage at Maple Lane. CCRS also met together with DSHS and Dept. of Health to touch base on licensure requirements, timelines and progress to date. DSHS position descriptions were drafted and are set to post the first week in February. Construction activities continue and are expected to be complete on 3/1/16. Ordering linens, clothing, personal products, commissary, mattresses etc. is underway. Food preparation and transportation logistics have been drafted, and a work van and patient transport vehicle are secured.

### Trueblood Implementation Steps Taken and Planned—January 2016

Task	Key Milestones	Status / End Dates	Anticipated Outcome & Assumptions	Results Achieved & Barriers to Completion
<b>Court Appointed Monitor Coordination</b>				
Monthly Reports	Released Dec. report	Complete	<ul style="list-style-type: none"> <li>• Maintain compliance with the Court</li> <li>• Use data to review and improve the provision of forensic services</li> </ul>	<ul style="list-style-type: none"> <li>• Released January report to Stakeholders following review of Court Monitor</li> </ul>
	Submit Jan. Report	1/15/2016		
	Post-Submission Review	1/22/2016		
<b>Legislative Coordination</b>				
Implement Second Engrossed	Develop implementation plan	TBD	<ul style="list-style-type: none"> <li>• Bill was enacted to provide remedies for improving the timeliness of forensic mental health services.</li> </ul>	<ul style="list-style-type: none"> <li>• On July 10, 2015, DSHS and Governor's office hosted Planning Meeting to discuss SB 5177 implementation, the 2015-2017 budget,</li> </ul>

Task	Key Milestones	Status / End Dates	Anticipated Outcome & Assumptions	Results Achieved & Barriers to Completion
Second Substitute Senate Bill (2E2SSB) 5177	Establish subgroups and an oversight committee as needed	TBD	<ul style="list-style-type: none"> <li>• Implement and operationalize the changes brought about by the bill through engagement of partners</li> </ul>	<p>and cross-system collaboration for the State's forensic mental health system. The governor's office invited members of the Tribes, the Counties, Public Defenders, Prosecutors, the Courts, the Administrative Office of the Courts, the Attorney General's Office, the State Legislature, Disability Rights Washington, NAMI Washington, and County Jails and Sheriffs. Workgroups reviewed specific goals and hurdles.</p> <ul style="list-style-type: none"> <li>• It was determined to solicit more input from the jails and counties and revisit the technical fix to SB 5177 relating to the authority of criminal courts to hold individuals after charges are dismissed and pending an evaluation for civil commitment under RCW 10.77.086(4) next session.</li> </ul>
	Onboard Implementation Liaison position to facilitate cross system collaboration work	Complete	<ul style="list-style-type: none"> <li>• Agency request legislation: receive Governor's approval and prepare drafts for introduction in the 2016 session.</li> </ul>	
Provide regular implementation and progress updates to Legislative body and staff	Schedule twice monthly update conference call or in-person meeting	Ongoing	<ul style="list-style-type: none"> <li>• Keep Legislators and staff up-to-date on status of Trueblood and SB5177 implementation</li> <li>• Provide opportunity to address questions related to monthly reports or the long-term plan</li> </ul>	<ul style="list-style-type: none"> <li>• Biweekly meetings are being held.</li> <li>• Testified before House judiciary and Appropriations Committees on Trueblood and 5177 implementation status 11/19/2015</li> </ul>

Task	Key Milestones	Status / End Dates	Anticipated Outcome & Assumptions	Results Achieved & Barriers to Completion
<p>Consult with DOH about draft legislation requiring DOH certification of forensic evaluators to determine the need for a sunrise review</p>	<p>Consult DOH</p>	<p>Ongoing</p>	<ul style="list-style-type: none"> <li>• Expanded pool of forensic evaluators would help improve timeliness. Licensure would provide quality assurance and create professional standards for forensic evaluators.</li> <li>• Develop long-term certification of forensic evaluators, consistent with the Trueblood Court Monitor’s recommendations on mid- and long-term performance to implement a forensic certification program to sustain performance (p. 33 of the Monitor’s Quarterly Report to the Court)</li> </ul>	<p>DSHS/BHSIA staff met with DOH on 12/15/15. DOH expressed a number of concerns, and focused on the following two barriers:</p> <ul style="list-style-type: none"> <li>• Timing considerations. DOH stated that the best case scenario to establish a credential program for forensic evaluators (licensing or certification) would take at least two years, with an existing training/educational program. Lacking such a program, it would likely take longer. Per DOH, it would be best to conduct a sunrise review, requiring a formal legislative request and additional DOH review.</li> <li>• Feasibility/sustainability. DOH expressed concerns about funding. Funds are derived from a licensing program, particularly licensing fees, and must be self-sustaining. DOH cannot expect a legislative subsidy. Considering economies of scale here, the cost for annual licenses may be prohibitively high.</li> </ul>
<p><b>Labor Coordination</b></p>				

Task	Key Milestones	Status / End Dates	Anticipated Outcome & Assumptions	Results Achieved & Barriers to Completion
Engage Labor Leaders and Members	Conduct ongoing bi-monthly meetings with Labor leaders	Ongoing	<ul style="list-style-type: none"> <li>• Discuss policy, budget and operational changes likely required to comply with the Trueblood requirements</li> <li>• Obtain staff necessary to safely support operation of additional forensic and civil beds at the state hospitals</li> <li>• Obtain necessary psychiatrists and physicians to supplement services proved by employees at Western State Hospital to safely support the operation of additional forensic and civil beds</li> </ul>	<ul style="list-style-type: none"> <li>• Labor submitted no alternatives to contracting for out psy. services at WSH by the 11/25/15 deadline</li> <li>• Labor submitted no notification of intent to form an Employee Bargaining Unit</li> <li>• Prepared letter to notify Labor of plans for opening a Residential Treatment Facility at Maple Lane for issue on January 5</li> </ul>
	Notice to Labor Partners of intent to enter into direct contract negotiations for Competency Restoration Services	Complete		
	Notice to Labor Partners of recruitment incentive award pilot program	Complete		
	Notice to Labor Partners of intent to pursue an RFI for a Vendor to provide psychiatry and physician services at Western State Hospital and the potential to contract for such services	Complete		

Task	Key Milestones	Status / End Dates	Anticipated Outcome & Assumptions	Results Achieved & Barriers to Completion
	Alternatives to contracting submission deadline	11/25/2015; no submission received		
	Deadline for notification of intent to form an Employee Business Unit	12/28/2015; no notification received		
<b>Data Collection and Fiscal Modeling</b>				
Monthly report data collection	Identify and obtain needed data	Ongoing	<ul style="list-style-type: none"> <li>Obtain data for monthly reports and develop standardized reports to inform policy development and implementation</li> </ul>	<ul style="list-style-type: none"> <li>Data collection is ongoing</li> </ul>
Institute data audit process	Review data and files of cases with anomalies	Ongoing	<ul style="list-style-type: none"> <li>Ensure completeness and accuracy of wait list data</li> </ul>	<ul style="list-style-type: none"> <li>Data validation process is ongoing</li> </ul>
	Identify trends	Ongoing		
Hire Statistician/ Forecaster	Develop PDF	Complete; updated 12/30/15 to meet agency wide need	<ul style="list-style-type: none"> <li>Provide expertise to develop models to predict need for competency services and develop an algorithm for admissions to State Hospitals to meet the 7 day standard and make optimal use of available beds</li> </ul>	<ul style="list-style-type: none"> <li>Internal leadership team reviewed the position in a context of all the BHA data positions and determined to centralize within the Decision Support and Evaluation group at HQ. This position will be involved in forensic</li> </ul>

Task	Key Milestones	Status / End Dates	Anticipated Outcome & Assumptions	Results Achieved & Barriers to Completion
	Establish position	Complete; may have to re-establish based on changes under discussion with HRD		services modeling. We are working to update the position description.
	Recruit	On hold		
	Hire	TBD		
	Onboard	TBD		
Hire Data Architect Position	Develop PDF	Complete	<ul style="list-style-type: none"> <li>• Build a technology solution to establish a common platform to transmit data between the State Hospitals and over 240 different jurisdictions to improve timeliness</li> <li>• Provide hands-on partner training across the system</li> </ul>	<ul style="list-style-type: none"> <li>• Working with Data Architect from WaTech while we continue to look for qualified permanent candidates.</li> </ul>
	Establish position	Complete		
	Recruit	On hold		
	Hire	TBD		
	Onboard	TBD		
Hire Data Manager Position	Develop PDF	7/1/2014	<ul style="list-style-type: none"> <li>• Develop standardized data reports to inform fiscal and program operations and improve data integrity as recommended by JLARC and Groundswell</li> </ul>	<ul style="list-style-type: none"> <li>• Previously filled position is currently vacant as of 10/1/15. Conducted review of the position description as part of the overall data position and structure review and</li> </ul>
	Establish position	9/1/2014		
	Recruit	TBD		
	Hire	TBD		

Task	Key Milestones	Status / End Dates	Anticipated Outcome & Assumptions	Results Achieved & Barriers to Completion
	Onboard	TBD		determined to centralize within the Decision Support and Evaluation group at HQ. This position will be involved in forensic services data management, and will supervise the Forecast Analyst position, which is also relocating to DSE. In January the position was reviewed and the PD was updated and sent on 1/27/16 to the Banding Committee for review.
Hire Web Developer	Develop PDF	Complete	<ul style="list-style-type: none"> <li>Will work on user interface for forensic data system.</li> </ul>	<ul style="list-style-type: none"> <li>Web developer has reviewed all existing documentation</li> </ul>
	Establish position	Complete		
	Recruit	Complete		
	Hire	Complete		
	Onboard	Complete		
Forensic System Design / Development	Review data dictionary	Complete	<ul style="list-style-type: none"> <li>Integrated Forensic System with consistent data entry and tracking of all class members from creation of court order for mental competency evaluation through completion of evaluation and / or restoration (whichever is later).</li> <li>Provide capability for access by evaluators to discovery documents and any status changes, regardless of location, to reduce</li> </ul>	<ul style="list-style-type: none"> <li>Meeting held to review the Restoration data flow. Requirements document has been drafted and the draft is under review.</li> <li>First draft data models prepared</li> </ul>
	Prepare requirements document	Drafted and under review		
	Build data models	First draft prepared		
	System build	TBD		
	System test	TBD		



Task	Key Milestones	Status / End Dates	Anticipated Outcome & Assumptions	Results Achieved & Barriers to Completion
	Deploy	TBD	<p>delays</p> <ul style="list-style-type: none"> <li>• Provide platform for quality reporting from single system, eliminating the variability currently inherent in leveraging legacy applications not meant for this purpose</li> </ul>	
<b>Human Resources</b>				
Hire Forensic Services Director	Conduct Interviews	TBD	<ul style="list-style-type: none"> <li>• Provide leadership and oversight for Forensic Mental Health Services operations</li> </ul>	<ul style="list-style-type: none"> <li>• Initial recruitment effort did not identify a successful candidate.</li> <li>• Worked with recruiter on developing a recruitment profile in preparation for February re-posting of position.</li> </ul>
	Obtain staff and stakeholder feedback	TBD		
	Secretary interviews	TBD		
	Hire	TBD		
	Onboard	TBD		
Hire Office of Forensic Services HQ positions	Develop Position Descriptions	Complete	<ul style="list-style-type: none"> <li>• Provide infrastructure for forensic services system and improve effective and timely provision of competency services</li> </ul>	<ul style="list-style-type: none"> <li>• Project Manager started 10/26/2015</li> <li>• Compliance Reporting Specialist started 10/16/2015</li> <li>• Diversion/Liaison specialist position started</li> </ul>
	Establish positions	Complete		
	Post positions for recruitment	Complete		
	Conduct Interviews	In progress		

Task	Key Milestones	Status / End Dates	Anticipated Outcome & Assumptions	Results Achieved & Barriers to Completion
	Hire and Onboard	TBD		<p>9/1/15</p> <ul style="list-style-type: none"> <li>Establishing the Workforce Development positions had been on hold. PDs developed and position establishment packages submitted to HRD Banding Committee on 12/30/15, reviewed and banded on 1/8/16. Positions were established by HRD on 1/12/16. Identified salary standards and a recruitment profile for development of a posting in February.</li> <li>One evaluator support position has been created and filled at ESH, and one administrative position at WSH is being double filled to provide this capacity while position development continues for the two funded evaluator support positions at WSH.</li> <li>See Data Collection and Fiscal Modelling section</li> </ul>
Hire additional hospital ward staff	Hired recruiter	Complete	<ul style="list-style-type: none"> <li>Obtain required staff of all classes to safely and appropriately operate additional civil and forensic beds and to meet data collection, analysis and reporting needs</li> </ul>	<ul style="list-style-type: none"> <li>Onboarded recruiter</li> <li>Developed recruitment marketing materials</li> <li>Engaged in hiring events</li> </ul>
	Establish recruiting marketing campaign	In progress		
	Conduct targeted hiring events	In progress		

Task	Key Milestones	Status / End Dates	Anticipated Outcome & Assumptions	Results Achieved & Barriers to Completion
	Pursue contracting	In progress		<ul style="list-style-type: none"> <li>• Provide \$200 incentive award to employees who refer a Psychiatrist, RN, Psychiatric Security Nurse or Psychiatric Nurse Attendants</li> <li>• Continuing barrier: Availability of interested and appropriately credentialed staff to fill vacant positions</li> </ul>
	Weekly hiring status report	In progress		
	Institute employee hiring recruitment incentive pilot	Complete		
	Medical transcriptionist hired	Complete		
<b>Competency Evaluation</b>				
Hire additional evaluators	Hiring at WSH	In progress	<ul style="list-style-type: none"> <li>• Increase evaluation capacity and reduce wait time for evaluation</li> </ul>	<ul style="list-style-type: none"> <li>• As of 1/31/15, 8 of 9 new WSH positions are filled.</li> <li>• As of 1/31/15, 3 of the 4 new ESH positions have been filled.</li> <li>• One pre-existing evaluator position that had become vacant was refilled on 1/4/16.</li> </ul>
	Hiring at ESH	In progress		
	Transfer one ESH vacant position to WSH	Complete		

Task	Key Milestones	Status / End Dates	Anticipated Outcome & Assumptions	Results Achieved & Barriers to Completion
Hire two new Forensic Services Supervisors	Complete PDs	In progress	<ul style="list-style-type: none"> <li>Will provide needed additional supervisors of Forensic Evaluator staff; leading to improved effectiveness and efficiency of evaluators</li> </ul>	<ul style="list-style-type: none"> <li>Developed plan for drafting position descriptions in consultation with current supervisors.</li> </ul>
	Recruit	TBD		
	Hire	TBD		
Build capacity for out-station sites	Identifying Out-station sites	In progress	<ul style="list-style-type: none"> <li>Increased capacity at out-station sites will reduce wait time for evaluation</li> </ul>	<ul style="list-style-type: none"> <li>Out-station site for Everett became operational 11/03/2015. Completed and currently in operation.</li> <li>Full time evaluator is stationed in SCORE facility in King County. Evaluations at SCORE have increased by 1.5 since an evaluator was stationed there.</li> <li>Full time evaluator is stationed in Vancouver, WA (Clark County) as of February 1, 2016.</li> <li>Regularly scheduled visiting evaluator pilot set for rotation in Thurston, Kitsap, Yakima and Lewis counties as of the end of December, 2015.</li> </ul>
	Site agreement/contract processes	In progress		
	Out-station sites operational	Completed		

Task	Key Milestones	Status / End Dates	Anticipated Outcome & Assumptions	Results Achieved & Barriers to Completion
Coordinate with forensic mental health system partners	Created a template to organize cross partner county specific discussions and to document results	Complete	<ul style="list-style-type: none"> <li>• Conversations with select jails close to hospitals or already designated for outstation sites are focused on creating space for evaluations on a regularly scheduled basis and ability to transport to state hospital. Secondly to discuss with local defenders associations regarding predictable availability to attend with clients; courts for coordination of timely transmittal of orders and documents; and local mental health agencies for additional supports and perhaps space</li> </ul>	<ul style="list-style-type: none"> <li>• DSHS attended Snohomish follow up meeting where all parties agreed that out-stationed evaluator was extremely beneficial.</li> <li>• DSHS evaluators are working with Snohomish County Public Defenders to provide competency training to defenders.</li> <li>• DSHS met with Cowlitz County Jail to discuss evaluator space and possibility for video conferencing capabilities and resources</li> </ul>
	Convene initial meetings	Ongoing		
	King County-hosted follow-up meeting	10/1/2015		

Task	Key Milestones	Status / End Dates	Anticipated Outcome & Assumptions	Results Achieved & Barriers to Completion
	Yakima County meeting with jail, defense attorneys, court and prosecutors	9/10/2015	<p>where that is identified as a challenge.</p> <ul style="list-style-type: none"> <li>• Presentations at the WASPC conference will provide opportunity to inform about impacts of Trueblood decision and make connections with members for future planning to facilitate transfer and access to reduce wait times and provide competency services</li> </ul>	<p>for involuntary medication orders.</p> <ul style="list-style-type: none"> <li>• DSHS working with Pierce County and Benton/Franklin to schedule community meeting. DSHS met with Pierce County 1/21/16.</li> <li>• DSHS met with Clark County 1/28/16.</li> <li>• DSHS is contacting each county directly to confirm whether participating in Community Competency Evaluation meeting.</li> <li>• DSHS will distribute state-only dollars to fund several pilot projects throughout the state. Projects involve a collaboration between prosecutors' office and a BHO or mental health provider (who also has a SUD license) This would serve to allow communities to develop innovative interventions that address the many factors that lead to individual's involvement in the criminal justice system that may not be addressed with Medicaid funding. It will allow DSHS to more accurately quantify gaps in policy/programs, funding and funding type needs. An RFP will be released at the beginning of February; responses will be due February 26, and recipients notified no later than March 11. Projects need to show how they will leverage dollars and current</li> </ul>
	Skagit County facility tour and in-person meeting	10/7/2015		

Task	Key Milestones	Status / End Dates	Anticipated Outcome & Assumptions	Results Achieved & Barriers to Completion
	Benton County facility tour and partnership meeting	9/28/2015		Medicaid services to serve the target population.
	Partner meeting: City of Yakima	10/7/2015		
	Partner meeting: Snohomish	10/19/2015		
	Partner meeting: Pierce	9/30/2015		
	Partner meeting: Franklin	Ongoing		
	Present at the Washington Association of Sheriffs and Police Chiefs (WASPC) annual conference	11/17/2015		

Task	Key Milestones	Status / End Dates	Anticipated Outcome & Assumptions	Results Achieved & Barriers to Completion
Continue current County-conducted evaluation system until 2018	Define data elements needed from counties that are conducting their own evaluations	11/30/2015	<ul style="list-style-type: none"> <li>Obtain data needed from counties in order to meet court ordered reporting requirements</li> </ul>	<ul style="list-style-type: none"> <li>DSHS has reached out to the Washington Association of Counties to see if their Annual Conference (November) is an appropriate audience and venue to hold a discussion with interested counties.</li> <li>E-mailed individual County Commissioners on October 19, 2015 regarding Community Competency Evaluations. Counties interested in program participation were asked to submit the name of individuals in their communities who should be involved in conversations related to the determination of data elements that should be collected each month. Submissions were due October 26, 2015. Three counties responded. DSHS is contacting each county directly to ensure declination of participation. Meeting invite sent to interested county representatives to develop and maintain data elements that should be collected each month on panel evaluations. One of our goals is to ensure consistent data measures and standards between panel evaluations and state-performed evaluations.</li> <li>DSHS presented at the 2015 Washington Association of Sheriffs and Police Chiefs Conference 11/17/15. Topic discussed was 5177 Implementation and multiple collaborative opportunities were identified.</li> </ul>



Task	Key Milestones	Status / End Dates	Anticipated Outcome & Assumptions	Results Achieved & Barriers to Completion
				<ul style="list-style-type: none"> <li>• DSHS scheduling meeting with WASPC Jail Liaison to discuss jail transport solutions.</li> </ul>

Task	Key Milestones	Status / End Dates	Anticipated Outcome & Assumptions	Results Achieved & Barriers to Completion
Conduct Value Stream Map (VSM) of Competency Service Process	Action items to be incorporated into Tiger Team plans to implement recommendations	Ongoing	<ul style="list-style-type: none"> <li>Develop current state map of the current system and suggestions that can be implemented to improve delivery of competency services</li> </ul>	<ul style="list-style-type: none"> <li>Key resources have been hired and initial designs of replacement system to begin.</li> </ul>
Conduct a Lean event at WSH to reform Administrative Assistant workflow	Planning for Lean event	Complete	<ul style="list-style-type: none"> <li>Multiple reforms to workflow patterns, assignments and procedures will maximize ability to meet outpatient and inpatient evaluation timeliness; determine how to distribute administrative positions between facilities.</li> </ul>	<ul style="list-style-type: none"> <li>The VSM was conducted between July and September 2015 and administrative support staff at WSH and ESH completed current state maps of the administrative steps needed to improve orders. Action plans were developed to include immediate improvements which were made by staff right away, interim improvements which can be accomplished with minor IT changes and a future state map that will inform the new data management system.</li> </ul>
	Conduct Lean event	Complete		
	Schedule event to complete ideal future state map	TBD		
Evaluate potential for distributing mobile equipment	Test a remote access system	Complete	<ul style="list-style-type: none"> <li>Provide out-stationed evaluators with the capacity to access DSHS systems and electronic health records remotely</li> </ul>	<ul style="list-style-type: none"> <li>We have concluded our initial testing of mobile solutions for the Forensic Evaluators.</li> <li>We are preparing implementation of an aircard laptop combination. Equipment was</li> </ul>
	Pilot a remote access system to be used in the field	Moved to implementation		

Task	Key Milestones	Status / End Dates	Anticipated Outcome & Assumptions	Results Achieved & Barriers to Completion
	Determine if capacity exists to implement within current budget	Pending completion of testing	<ul style="list-style-type: none"> <li>• Support more rapid entry of evaluation information and reduce duplicate data entry</li> </ul>	<p>ordered and aircards have begun to arrive. Software adjustments may be made to laptops if issues arise after they are in place. Training has been performed at ESH.</p> <ul style="list-style-type: none"> <li>• Preparing approval of purchase of digital recorders and transcription pedals for ESH. Purchase to be approved 1/4/16 and training to begin 1/13/16 for immediate implementation when equipment arrives. All mobile technology has been approved and purchased. Training at both ESH and WSH has started. Deployment of mobile technology and completion of training anticipated by end of February.</li> <li>• Encrypted digital voice recorders have been ordered. Will roll out immediately at ESH on arrival. WSH batch will take time to coordinate with existing transcription/transfer system.</li> <li>• Two outstations have been staffed and equipped. (Everett and SCORE). IT resources have been allocated to support these outstations. As of 12/24/15 SCORE reported that there were 0 evaluations pending.</li> </ul>

Task	Key Milestones	Status / End Dates	Anticipated Outcome & Assumptions	Results Achieved & Barriers to Completion
Explore triage system possibilities	Obtain additional information and recommendations from Groundswell	TBD	<p>Establish an efficient evaluation to identify individuals who:</p> <ul style="list-style-type: none"> <li>• Need inpatient services due to serious mental health condition</li> <li>• Clearly do not require inpatient evaluation services; or</li> <li>• Are clearly competent due to changes in their condition since the issuance of an order for evaluation (such as no longer drug affected)</li> </ul>	<ul style="list-style-type: none"> <li>• Discussions with local jurisdiction partnerships (as detailed above) have identified current local programs that may have tools in use that can be piloted as early screening tool.</li> </ul>
<b>Competency Restoration</b>				
Western State Hospital (WSH); S4 Ward: add 15 beds	Design and Permitting	Complete	<ul style="list-style-type: none"> <li>• Serves overall plan to add 90 beds and expand State Hospital bed capacity to meet Court ordered compliance date</li> <li>• Moving forensic patients from E1 to S4 will open restoration beds</li> </ul>	<ul style="list-style-type: none"> <li>• Fifteen patients have been moved on to S4.</li> </ul>
	Construction	Complete		
	Labor Discussions	Complete		
	Staff Onboarding	Complete		
	Ward preparation and patient movement	Complete		
	Complete fence project	Complete		
	Complete Guard Shack	Complete		
	Added 10 beds	Complete		
Add 5 additional beds	Complete			
	Design and Permitting	Complete		<ul style="list-style-type: none"> <li>• Due to recent CMS survey results and DSHS plans to meet the requirements set out by</li> </ul>

Task	Key Milestones	Status / End Dates	Anticipated Outcome & Assumptions	Results Achieved & Barriers to Completion
WSH; E2 and F3 Wards: add 30 beds	Patient movement: E2 to E4	Complete	<ul style="list-style-type: none"> <li>Serves overall plan to add 90 beds and expand State Hospital bed capacity to meet Court ordered compliance date</li> </ul>	<p>CMS, the plans to open F3 have been postponed.</p> <ul style="list-style-type: none"> <li>Difficulties in bringing on sufficient staffing have been a major hurdle.</li> <li>Physical/architectural modifications are complete.</li> </ul>
	Construction	Complete		
	Labor Discussions	On hold		
	Develop hiring plan	Complete		
	Ward Preparation and patient movement F3 to E2	Complete		
	Renovations to F3	Complete		
Bed Occupancy	TBD			
ESH; 3S Ward: add 30 beds	Review current ward occupancy and make relocation plan	Complete	<ul style="list-style-type: none"> <li>Serves overall plan to add 90 beds and expand State Hospital bed capacity to meet Court ordered compliance date</li> </ul>	<ul style="list-style-type: none"> <li>Many staff have been hired and are currently going through orientation and training, but the total newly opened beds remains at 15.</li> <li>Negotiated with L&amp;I and determined that no additional emergency circuits are required.</li> <li>Received emergency declaration and secured contractor</li> <li>Identified adequate number of patients to transfer from 3S to new 2N3 ward</li> </ul>
	Develop staffing and hiring plan	Complete		
	Install cabling needed for office relocation	Complete		
	Relocate staff offices on 2N3 to 1N3 and 3N3	Complete		
	Design and Permitting	Complete		

Task	Key Milestones	Status / End Dates	Anticipated Outcome & Assumptions	Results Achieved & Barriers to Completion
	Negotiations with L & I	Complete		<ul style="list-style-type: none"> <li>• Security and programmatic renovations underway on 3S2 ward</li> </ul> <p>Barriers include:</p> <ul style="list-style-type: none"> <li>• Ability to recruit enough staff to support additional 15 beds in Phase II.</li> </ul>
Construction: Ward renovation	Complete	Construction: Patient safety--anti-ligature work)	Complete	
Construction: Update nurse call system/intercom	Complete	Construction: Install cameras	Complete	
CMS Survey for new 2N3 ward	TBD	Staff Ward Preparation and moving NGRI patients from 3S to 2N3	Complete	
Comp Restoration Bed Occupancy Phase I (15 beds)	Complete	Comp Restoration Bed Occupancy Phase II (15 beds)	TBD; Adding up to 5 beds per week depending on staffing levels	

Task	Key Milestones	Status / End Dates	Anticipated Outcome & Assumptions	Results Achieved & Barriers to Completion
Open Competency Restoration treatment program at Maple Lane: up to 30 beds	Assess The Joint Commission (TJC) and Centers for Medicare and Medicaid Services (CMS) certification requirements	Complete	<ul style="list-style-type: none"> <li>Identify alternate facility capacity to meet <i>Trueblood</i> compliance.</li> <li>Any competency restoration treatment program at Maple Lane is anticipated to transfer to operation at a State Hospital before DOC would be housing inmates on that campus</li> </ul>	<ul style="list-style-type: none"> <li>Completion of construction is scheduled for 3/1/16.</li> <li>In mid-January, CCRS visited WA for strategic planning purposes. CCRS toured CFS at WSH and MLS. CCRS met with DOH regarding licensure.</li> <li>BHA continues to coordinate with staff at Green Hill School and DSHS Consolidated Maintenance Operations (CMO) to finalize food and laundry arrangements. Draft policies are in place. Work van and patient transport vehicles are secured. Interagency Agreements (IAAs) have been drafted to support food, laundry and maintenance support at MLS.</li> <li>Request to establish a ML project to allow for creation of project positions for Maple Lane staffing was approved on 1/25/16. This meets WAC requirements for establishing project positions.</li> <li>BHA continued meeting/planning with HRD recruitment staff for ML staffing</li> <li>The PDs for the 24 Residential Rehabilitation Counselor 2 (RRC2) positions</li> </ul>
	Test HVAC, lights, etc.	Complete		
	Complete Special Use Permit (SUP) Process	Complete		
	Post Essential Public Facilities notice	Complete		
	Attend local school board meeting	Complete		
	Conduct a required public meeting	Complete		
	Participate in SUP Pre-Submission Conference	Complete		
	Establish DOC MOU	Complete		

Task	Key Milestones	Status / End Dates	Anticipated Outcome & Assumptions	Results Achieved & Barriers to Completion
	Finalize the telephony, data circuitry, printer requirements with vendor	In progress		<p>were developed, all position establishment packages were submitted to HRD C &amp; C, and the positions were approved and established by HRD C &amp; C on 1/28/16. The RRC2 positions were posted on 2/3/16.</p> <ul style="list-style-type: none"> <li>The PDs for the 13 Security Guard 2 positions (SG2) and one Security Guard 3 (SG3) were under development in Jan. The SG position establishment packages were sent to C &amp; C on 2/2/16, and the positions were established. The SG positions were posted on 2/3/16.</li> <li>The BHA WMS on-site manager position (Residential Services manager) establishment package was sent to HRD on 1/21/16. The position was reviewed and banded at the 1/22/16 Banding Committee, the position was established on 1/24/16. Contacted HRD Senior Recruiter, who agreed to directly handle the posting and recruitment. Recruiter sent a "Recruitment Profile" document to aid in preparing posting and</li> </ul>
Hire DSHS staff to support a hybrid staffing model at MLS	3/31/2016			
Identify contractor to implement restoration services at MLS	Complete			
Complete construction modifications required to open MLS	3/1/2016			
Obtain Dept. of Health Licensure and DSHS RTF certification	4/1/2016			



Task	Key Milestones	Status / End Dates	Anticipated Outcome & Assumptions	Results Achieved & Barriers to Completion
	Finalize service plans to cover laundry, food, transportation of goods, etc. for MLS; Draft Interagency Agreement to capture decisions	In progress		recruitment strategy; RW submitted on 1/29/16. Recruiter targets week of 2/8/16 for posting.  <ul style="list-style-type: none"> <li>• Modular office space to be complete mid March</li> </ul>
	IT services are available at MLS and electronic equipment configured and ready to use	3/1/2016		
Establish Community alternative sites for competency restoration in Yakima: up to 24 beds	Statutory direction	Complete	<ul style="list-style-type: none"> <li>• Planning for 24 beds</li> <li>• Anticipated duration of one year and possible one year extension</li> <li>• Identify alternate facility capacity to support timely competency services that will meet the Trueblood compliance deadline of 05/27/16</li> <li>• Trauma informed care and the Breaking Barriers program used at WSH for</li> </ul>	<ul style="list-style-type: none"> <li>• Fully executed contract signed on 10/22/15, and started 10/23/15.</li> <li>• Emergency rules to certify agencies to provide competency restoration services were filed with the Washington State Code Reviser's office on 10/07/15 and became effective on that date.</li> <li>• DSHS is moving forward with preparations to file a permanent rule filing after receiving stakeholder input. The initial preproposal</li> </ul>
	Meet 41.06.142 obligations	Complete		
	Post RFI	Complete		
	Host information day	Complete		
	RFI responses due	Complete		
	Vendor presentations	Complete		
	Post RFP	Not pursued		
	Tour Yakima facility	Complete		

Task	Key Milestones	Status / End Dates	Anticipated Outcome & Assumptions	Results Achieved & Barriers to Completion
	Establish emergency rule to support authority to operate	Complete	competency restoration will be the same model used in this RTF <ul style="list-style-type: none"> <li>It is anticipated that trauma informed care (a national best practice for psychiatric hospitals) and the Breaking Barriers program used at WSH for competency restoration will be the same model used in this RTF</li> </ul>	statement of inquiry (CR-101) to implement rules was filed on August 27, 2015. A proposed rulemaking (CR-102) packet was filed on December 18, 2015. A hearing is to be held at DSHS's OB2 on January 26, with all comments to be received by the end of that day. We then plan to have the final rule (CR-103) submitted by the end of January. The permanent rule becomes effective 31 days
	Negotiate contract	Complete		
	Develop referral criteria	Complete		
	Execute contract	Complete		

Task	Key Milestones	Status / End Dates	Anticipated Outcome & Assumptions	Results Achieved & Barriers to Completion
	Desired service begin	3/1/2016	<ul style="list-style-type: none"> <li>• WSH Center for Forensic Services supervising psychiatrist is willing to help provide training and consultation to Comprehensive prescribers and WSH pharmacy was consulted regarding medication formularies to be used</li> <li>• Additional collaborations will be instituted to support ongoing comparable treatment services to patients served in this RTF and to ensure ongoing quality and oversight within the contract monitoring to be done by DSHS</li> </ul>	<p>after filing.</p> <p>Implementation date was extended to 3/1/16 to accommodate the following schedule:</p> <ul style="list-style-type: none"> <li>• Initial consultation with DOH construction review - 9/28/2015</li> <li>• Initiate process for RTF licensing with DOH - 10/1/2015</li> <li>• Sign contract with DSHS to provide CR services; Full push for recruiting - 10/23/2015</li> <li>• Sign Facility Contract with Yakima County Corrections - 11/04/2015</li> <li>• Complete Program manual for review' Complete policies and procedures for review - 11/15/15</li> <li>• Finalize renovation plans and submit for approval - 12/07/2015</li> <li>• Sign contractor agreement to complete renovations - 12/11/2015</li> <li>• Complete functional plan for review; Submit application for RTF Licensure; Submit application for certification with DBHR - 12/15/15</li> <li>• Renovations completed and facility ready for use; Open doors to new admissions - 3/1/16</li> <li>• Staff training with Western State (40 hours) - February 2016</li> <li>• Two week mock opening staff training - February 2016</li> <li>• Video conferencing – testing continues in</li> </ul>

Task	Key Milestones	Status / End Dates	Anticipated Outcome & Assumptions	Results Achieved & Barriers to Completion
				Yakima and has uncovered the need for hardware upgrades on the end of the Yakima Jail which is currently in the works.
County transport of patients	Coordinate with counties to develop transport protocols	TBD	<ul style="list-style-type: none"> <li>• Ensure timely transport of patients to support delivery of competency services as directed in court order</li> </ul>	<ul style="list-style-type: none"> <li>• See updates in Evaluation partner discussion section(s) above</li> </ul>

Task	Key Milestones	Status / End Dates	Anticipated Outcome & Assumptions	Results Achieved & Barriers to Completion
<b>Diversion Alternatives</b>				
Implement new SB 5177 provisions for dismissal of charges & referral to treatment	Issuance of RFA for distribution of appropriated funding	TBD	<ul style="list-style-type: none"> <li>Prosecutor can dismiss criminal charges without prejudice &amp; refer to community-based mental health services</li> </ul>	<ul style="list-style-type: none"> <li>DSHS issued an RFP to distribute the State portion of diversion dollars. See above.</li> </ul>
	Diversion Programs operational	TBD		
Establish a Diversion Taskforce	Establish task force membership	4/1/2016	<ul style="list-style-type: none"> <li>Establish a taskforce modeled after Michigan's Mental Health Diversion Council, and membership from key state partners is currently being developed to include a</li> </ul>	<ul style="list-style-type: none"> <li>Governor's Office has identified staff from HCA, DOC, and DSHS to participate in initial internal workgroup</li> </ul>
	Develop taskforce charter and scope	4/1/2016		

Task	Key Milestones	Status / End Dates	Anticipated Outcome & Assumptions	Results Achieved & Barriers to Completion
	Convene taskforce	4/1/2016	charter and scope. It is anticipated that the scope will be broader than outlined in SB5177 which includes only post-booking diversion.	<ul style="list-style-type: none"> <li>Decision Package has been submitted to fund efforts. The Governor's proposed budget released in December includes the requested funding.</li> <li>Anticipated timeframe for a signed executive order and appointment of partners – March 2016</li> </ul>
<b>Staff and Patient Safety</b>				
State Hospital Psychiatric Intensive Care Unit (PICU)	Construction	4/1/2016	<ul style="list-style-type: none"> <li>Recommendation of Labor/Management Ad Hoc Safety Committee to enhance staff and patient safety</li> </ul>	<ul style="list-style-type: none"> <li>Supplemental budget allocated \$339k for development of a PICU—construction will take place to establish an 8 bed space</li> <li>Proposed budget has funding for 23 FTE to implement a 1-3 bed PICU</li> <li>Bed occupancy in excess of 3 patients dependent on additional funding</li> </ul>
	Staff Ward Preparation	4/15/2016		
	1-3 Bed Occupancy	4/19/2016		
	Occupancy beyond 3 beds	TBD		
Psychiatric Emergency Response Teams (PERT) teams (1 additional WSH and 1 at ESH)	Labor discussions	Complete	<ul style="list-style-type: none"> <li>Recommendation of Labor/Management Ad Hoc Safety Committee</li> </ul>	<ul style="list-style-type: none"> <li>Likely need PERT team at ESH forensic wards for higher acuity patients who have been in jail for less time</li> <li>Has been implemented at ESH and is pending implementation on the civil side at WSH.</li> <li>Weekly work groups focused on rollout of</li> </ul>
	Staff training	Complete		
	Equipment purchase	Complete		
	Staff onboarding	Complete ESH; pending civil at WSH		

Task	Key Milestones	Status / End Dates	Anticipated Outcome & Assumptions	Results Achieved & Barriers to Completion
	PERT teams operational	Complete ESH; pending civil at WSH		PERT team at WSH on civil side. Training for team members to begin 1/15/16.
Staff safety training in de-escalation and other skills to reduce workplace violence designed and delivered by State Hospital staff experts	Approval of proposed budget	Complete	<ul style="list-style-type: none"> <li>Recommendation of Labor/Management Ad Hoc Safety Committee to enhance patient and staff safety</li> </ul>	Budget provided 9 of the requested fill behind FTEs to include: <ul style="list-style-type: none"> <li>PSA/MHT Training—16 hours</li> <li>LPN Training—18 hours</li> <li>RN Training—24 hours</li> </ul>
	Develop curriculum	Complete		
	Broaden training of Best Practices for Interaction with Patients	Ongoing		
	Develop system to monitor annual training implementation	Ongoing		
Conduct comprehensive assault incident reviews	Hire 2 patient-to-staff assault incident reviewers	Complete	<ul style="list-style-type: none"> <li>Post-incident de-briefing and root cause analysis of assault incidents will identify necessary systems changes to increase staff safety</li> </ul>	<ul style="list-style-type: none"> <li>Assault incident reviewer FTEs were not in BHSIA's budget but we absorbed the cost and went forward.</li> </ul>
	Establish assault review workgroup	Complete		

**Appendix A: Class Member-- Evaluation Information for December 2015**

Hospital	Class Member	Location	County	Offense	Completion Method or Incomplete	Order Signed Date	Number of days from signed order to:			
							Order Received	Discovery Received	Complete	Incomplete: End of Reporting Period
WSH	2465	JAIL	SNOHOMISH	MISDEMEANOR	WITHDRAWN	9/17/2015	0	0	.	105
WSH	2470	JAIL	KING	MISDEMEANOR	WITHDRAWN	9/18/2015	0	0	5	1
WSH	2510	JAIL	THURSTON	FELONY	WITHDRAWN	9/24/2015	0	0	74	.
WSH	2529	JAIL	SNOHOMISH	MISDEMEANOR	FAXED	9/30/2015	0	0	14	.
WSH	2772	JAIL	KING	MISDEMEANOR	FAXED	10/12/2015	0	1	3	.
WSH	2780	JAIL	MASON	FELONY	TIC	10/12/2015	1	1	23	.
WSH	2782	JAIL	THURSTON	MISDEMEANOR	WITHDRAWN	10/12/2015	0	0	24	.
WSH	2799	JAIL	KING	MISDEMEANOR	WITHDRAWN	10/14/2015	0	0	5	.
WSH	2821	JAIL	PIERCE	FELONY	FAXED	10/16/2015	10	10	.	76
WSH	2836	JAIL	KING	FELONY	FAXED	10/21/2015	0	0	42	.
WSH	2844	JAIL	KING	FELONY	FAXED	10/22/2015	0	0	41	.
WSH	2886	JAIL	MASON	MISDEMEANOR	FAXED	10/28/2015	2	2	8	.
WSH	3032	JAIL	KING	FELONY	TIC	10/16/2015	0	0	.	76
WSH	3043	JAIL	CLARK	MISDEMEANOR	FAXED	10/28/2015	7	7	19	.
WSH	3045	JAIL	KING	FELONY	FAXED	10/30/2015	3	3	33	.
WSH	3112	INPATIENT	PIERCE	MISDEMEANOR	CANCELLED	11/3/2015	10	10	28	.
WSH	3133	JAIL	KING	FELONY	FAXED	11/5/2015	0	0	40	.
WSH	3134	JAIL	KING	FELONY	FAXED	11/5/2015	1	1	26	.
WSH	3140	JAIL	SNOHOMISH	MISDEMEANOR	FAXED	11/6/2015	0	0	25	.
WSH	3148	INPATIENT	KING	MISDEMEANOR	BED OFFERED	11/9/2015	1	1	28	.
WSH	3149	JAIL	KING	FELONY	FAXED	11/9/2015	0	0	31	.
WSH	3150	JAIL	KING	FELONY	FAXED	11/9/2015	1	1	32	.



WSH	3154	JAIL	KING	FELONY	FAXED	11/10/2015	0	0	31	.
WSH	3155	JAIL	KING	FELONY	FAXED	11/10/2015	0	0	35	.
WSH	3156	JAIL	KING	FELONY	FAXED	11/10/2015	0	0	35	.
WSH	3165	INPATIENT	KING	FELONY CLASS B	BED OFFERED	11/12/2015	0	0	26	.
WSH	3166	INPATIENT	KING	FELONY CLASS B	BED OFFERED	11/12/2015	1	1	29	.
WSH	3167	JAIL	GRAYS HARBOR	FELONY	FAXED	11/12/2015	1	1	36	.
WSH	3168	JAIL	KING	FELONY	FAXED	11/12/2015	0	0	26	.
WSH	3169	JAIL	KING	FELONY	FAXED	11/12/2015	0	0	29	.
WSH	3170	JAIL	KING	FELONY	FAXED	11/12/2015	0	0	28	.
WSH	3171	JAIL	KING	FELONY	FAXED	11/12/2015	0	0	20	.
WSH	3172	JAIL	KING	MISDEMEANOR	FAXED	11/12/2015	0	0	33	.
WSH	3173	JAIL	KING	MISDEMEANOR	FAXED	11/12/2015	1	1	20	.
WSH	3174	JAIL	SKAGIT	FELONY	FAXED	11/12/2015	0	0	27	.
WSH	3180	JAIL	CLARK	MISDEMEANOR	INCOMPLETE	11/13/2015	0	0	.	48
WSH	3181	JAIL	KING	FELONY	FAXED	11/13/2015	0	0	48	.
WSH	3182	JAIL	MASON	FELONY	INCOMPLETE	11/13/2015	3	3	.	48
WSH	3183	JAIL	SKAGIT	FELONY	FAXED	11/13/2015	0	0	28	.
WSH	3185	JAIL	SNOHOMISH	MISDEMEANOR	FAXED	11/13/2015	0	0	18	.
WSH	3188	JAIL	KING	MISDEMEANOR	FAXED	11/16/2015	1	1	16	.
WSH	3189	JAIL	KING	MISDEMEANOR	FAXED	11/16/2015	1	1	18	.
WSH	3190	JAIL	KING	MISDEMEANOR	WITHDRAWN	11/16/2015	0	0	16	.
WSH	3191	JAIL	KING	MISDEMEANOR	FAXED	11/16/2015	0	0	36	.
WSH	3192	JAIL	KING	MISDEMEANOR	FAXED	11/16/2015	1	1	21	.
WSH	3193	JAIL	SNOHOMISH	MISDEMEANOR	FAXED	11/16/2015	0	0	15	.
WSH	3195	JAIL	CLARK	MISDEMEANOR	WITHDRAWN	11/17/2015	3	3	17	.
WSH	3196	JAIL	KING	FELONY	WITHDRAWN	11/17/2015	0	0	15	.
WSH	3197	JAIL	KING	MISDEMEANOR	FAXED	11/17/2015	1	1	15	.
WSH	3198	JAIL	KING	MISDEMEANOR	FAXED	11/17/2015	1	1	14	.
WSH	3199	JAIL	PIERCE	MISDEMEANOR	INCOMPLETE	11/17/2015	3	3	.	44
WSH	3200	JAIL	SNOHOMISH	MISDEMEANOR	FAXED	11/17/2015	0	0	14	.

WSH	3202	INPATIENT	KING	FELONY CLASS B	BED OFFERED	11/18/2015	1	1	30	.
WSH	3203	JAIL	KING	MISDEMEANOR	FAXED	11/18/2015	0	0	21	.
WSH	3207	JAIL	COWLITZ	FELONY	FAXED	11/19/2015	4	4	12	.
WSH	3208	JAIL	KING	FELONY	FAXED	11/19/2015	1	1	25	.
WSH	3209	JAIL	KING	MISDEMEANOR	FAXED	11/19/2015	1	1	20	.
WSH	3210	JAIL	SNOHOMISH	FELONY	FAXED	11/19/2015	0	0	.	42
WSH	3211	JAIL	SNOHOMISH	MISDEMEANOR	FAXED	11/19/2015	0	0	13	.
WSH	3212	JAIL	THURSTON	MISDEMEANOR	FAXED	11/19/2015	1	1	15	.
WSH	3213	JAIL	WHATCOM	FELONY	FAXED	11/19/2015	1	1	19	.
WSH	3214	JAIL	WHATCOM	FELONY	FAXED	11/19/2015	4	4	21	.
WSH	3217	JAIL	KING	FELONY	FAXED	11/20/2015	3	3	16	.
WSH	3219	JAIL	KING	MISDEMEANOR	WITHDRAWN	11/20/2015	0	0	14	.
WSH	3220	JAIL	KING	MISDEMEANOR	FAXED	11/20/2015	0	0	14	.
WSH	3222	JAIL	CLARK	FELONY	FAXED	11/23/2015	1	1	8	.
WSH	3223	JAIL	GRAYS HARBOR	MISDEMEANOR	FAXED	11/23/2015	0	0	9	.
WSH	3224	JAIL	KING	FELONY	FAXED	11/23/2015	1	1	23	.
WSH	3225	JAIL	KING	FELONY	FAXED	11/23/2015	0	0	18	.
WSH	3226	JAIL	KING	MISDEMEANOR	WITHDRAWN	11/23/2015	0	0	15	.
WSH	3227	JAIL	KING	MISDEMEANOR	FAXED	11/23/2015	0	0	24	.
WSH	3228	JAIL	KING	MISDEMEANOR	WITHDRAWN	11/23/2015	0	0	9	.
WSH	3229	JAIL	KING	MISDEMEANOR	WITHDRAWN	11/23/2015	0	0	9	.
WSH	3232	JAIL	KING	FELONY	FAXED	11/24/2015	0	0	20	.
WSH	3233	JAIL	KING	MISDEMEANOR	FAXED	11/24/2015	0	0	21	.
WSH	3234	JAIL	KING	MISDEMEANOR	FAXED	11/24/2015	0	0	21	.
WSH	3235	JAIL	PIERCE	MISDEMEANOR	FAXED	11/24/2015	0	0	16	.
WSH	3236	JAIL	KING	MISDEMEANOR	FAXED	11/25/2015	0	0	14	.
WSH	3237	JAIL	KITSAP	MISDEMEANOR	FAXED	11/25/2015	0	0	13	.
WSH	3238	JAIL	LEWIS	MISDEMEANOR	FAXED	11/25/2015	0	0	8	.
WSH	3239	JAIL	KING	FELONY	FAXED	11/27/2015	0	0	34	.
WSH	3348	JAIL	CLALLAM	MISDEMEANOR	FAXED	10/13/2015	50	50	64	.

WSH	3349	JAIL	KING	MISDEMEANOR	FAXED	11/6/2015	0	0	12	.
WSH	3350	JAIL	CLARK	FELONY	FAXED	11/19/2015	1	1	22	.
WSH	3352	JAIL	SNOHOMISH	MISDEMEANOR	FAXED	11/20/2015	13	13	25	.
WSH	3353	JAIL	KING	FELONY	FAXED	11/23/2015	17	17	22	.
WSH	3354	INPATIENT	PIERCE	FELONY CLASS C	BED OFFERED	11/23/2015	0	0	29	.
WSH	3355	JAIL	LEWIS	MISDEMEANOR	FAXED	11/25/2015	0	0	8	.
WSH	3356	JAIL	THURSTON	MISDEMEANOR	FAXED	11/25/2015	6	6	12	.
WSH	3357	INPATIENT	KING	GROSS MISDEMEANOR	BED OFFERED	11/25/2015	0	0	13	.
WSH	3358	JAIL	KING	MISDEMEANOR	FAXED	11/25/2015	2	2	14	.
WSH	3359	JAIL	THURSTON	MISDEMEANOR	FAXED	11/25/2015	5	5	14	.
WSH	3360	INPATIENT	CLARK	FELONY CLASS A	BED OFFERED	11/25/2015	5	5	21	.
WSH	3361	JAIL	PIERCE	MISDEMEANOR	WITHDRAWN	11/30/2015	0	0	2	.
WSH	3362	JAIL	KING	MISDEMEANOR	WITHDRAWN	11/30/2015	1	1	3	.
WSH	3363	JAIL	THURSTON	MISDEMEANOR	FAXED	11/30/2015	0	0	4	.
WSH	3364	JAIL	THURSTON	MISDEMEANOR	FAXED	11/30/2015	0	0	5	.
WSH	3365	JAIL	THURSTON	MISDEMEANOR	FAXED	11/30/2015	1	1	5	.
WSH	3366	JAIL	MASON	MISDEMEANOR	FAXED	11/30/2015	1	1	7	.
WSH	3367	JAIL	KING	MISDEMEANOR	TIC	11/30/2015	0	0	14	.
WSH	3368	JAIL	KING	FELONY	FAXED	11/30/2015	0	0	14	.
WSH	3369	JAIL	KING	MISDEMEANOR	FAXED	11/30/2015	0	0	15	.
WSH	3370	JAIL	KING	MISDEMEANOR	FAXED	11/30/2015	1	1	15	.
WSH	3371	JAIL	KING	MISDEMEANOR	FAXED	11/30/2015	1	1	15	.
WSH	3372	JAIL	KING	MISDEMEANOR	FAXED	11/30/2015	0	0	16	.
WSH	3373	JAIL	SNOHOMISH	FELONY	FAXED	11/30/2015	0	0	18	.
WSH	3374	JAIL	KING	FELONY	FAXED	11/30/2015	1	1	21	.
WSH	3375	JAIL	KING	FELONY	FAXED	11/30/2015	0	0	22	.
WSH	3376	JAIL	KING	MISDEMEANOR	INCOMPLETE	11/30/2015	1	1	.	31
WSH	3441	JAIL	CLALLAM	MISDEMEANOR	FAXED	12/1/2015	1	1	8	.
WSH	3442	JAIL	CLALLAM	MISDEMEANOR	FAXED	12/1/2015	1	1	9	.

WSH	3443	JAIL	CLARK	FELONY	FAXED	12/1/2015	1	1	17	.
WSH	3444	JAIL	KING	MISDEMEANOR	FAXED	12/1/2015	0	0	3	.
WSH	3445	JAIL	KING	MISDEMEANOR	FAXED	12/1/2015	0	0	3	.
WSH	3446	JAIL	KING	MISDEMEANOR	WITHDRAWN	12/1/2015	1	1	7	.
WSH	3447	JAIL	KING	MISDEMEANOR	FAXED	12/1/2015	0	0	8	.
WSH	3448	JAIL	WHATCOM	MISDEMEANOR	FAXED	12/1/2015	10	10	15	.
WSH	3449	JAIL	KING	MISDEMEANOR	WITHDRAWN	12/2/2015	0	0	7	.
WSH	3450	JAIL	KING	MISDEMEANOR	FAXED	12/2/2015	1	1	9	.
WSH	3451	JAIL	KING	MISDEMEANOR	FAXED	12/2/2015	0	0	14	.
WSH	3452	JAIL	KING	MISDEMEANOR	FAXED	12/2/2015	1	1	14	.
WSH	3453	JAIL	MASON	MISDEMEANOR	FAXED	12/2/2015	0	0	6	.
WSH	3454	JAIL	PIERCE	FELONY	FAXED	12/2/2015	5	5	22	.
WSH	3455	JAIL	PIERCE	MISDEMEANOR	FAXED	12/2/2015	0	0	7	.
WSH	3456	JAIL	PIERCE	MISDEMEANOR	FAXED	12/2/2015	1	1	14	.
WSH	3457	JAIL	THURSTON	FELONY	FAXED	12/2/2015	1	1	9	.
WSH	3458	JAIL	CLALLAM	MISDEMEANOR	FAXED	12/3/2015	0	8	12	.
WSH	3459	JAIL	CLARK	MISDEMEANOR	FAXED	12/3/2015	1	1	7	.
WSH	3460	JAIL	CLARK	MISDEMEANOR	FAXED	12/3/2015	1	1	7	.
WSH	3461	JAIL	COWLITZ	FELONY	FAXED	12/3/2015	1	1	13	.
WSH	3462	JAIL	KING	FELONY	INCOMPLETE	12/3/2015	0	0	.	28
WSH	3463	JAIL	KING	FELONY	FAXED	12/3/2015	0	0	13	.
WSH	3464	JAIL	KING	MISDEMEANOR	FAXED	12/3/2015	0	0	17	.
WSH	3465	JAIL	KING	MISDEMEANOR	FAXED	12/3/2015	1	1	19	.
WSH	3466	JAIL	KITSAP	MISDEMEANOR	FAXED	12/3/2015	0	0	13	.
WSH	3467	JAIL	PIERCE	FELONY	FAXED	12/3/2015	5	5	18	.
WSH	3468	JAIL	SNOHOMISH	MISDEMEANOR	FAXED	12/3/2015	0	0	14	.
WSH	3469	JAIL	WHATCOM	FELONY	FAXED	12/3/2015	1	1	14	.
WSH	3470	JAIL	CLARK	FELONY	FAXED	12/4/2015	3	3	6	.
WSH	3471	JAIL	CLARK	FELONY	WITHDRAWN	12/4/2015	11	11	13	.
WSH	3472	JAIL	KING	FELONY	TIC	12/4/2015	0	0	14	.

WSH	3473	JAIL	KING	MISDEMEANOR	INCOMPLETE	12/4/2015	0	0	.	27
WSH	3474	JAIL	KING	MISDEMEANOR	FAXED	12/4/2015	3	3	12	.
WSH	3475	JAIL	KING	MISDEMEANOR	FAXED	12/4/2015	0	0	14	.
WSH	3476	JAIL	PIERCE	FELONY	FAXED	12/4/2015	3	3	13	.
WSH	3477	JAIL	PIERCE	MISDEMEANOR	WITHDRAWN	12/4/2015	3	3	11	.
WSH	3478	JAIL	PIERCE	MISDEMEANOR	FAXED	12/4/2015	0	0	18	.
WSH	3479	JAIL	SNOHOMISH	FELONY	WITHDRAWN	12/4/2015	0	0	17	.
WSH	3480	JAIL	SNOHOMISH	MISDEMEANOR	WITHDRAWN	12/4/2015	0	0	12	.
WSH	3481	JAIL	WHATCOM	MISDEMEANOR	FAXED	12/4/2015	7	7	13	.
WSH	3482	JAIL	CLALLAM	MISDEMEANOR	FAXED	12/7/2015	1	9	22	.
WSH	3483	JAIL	CLARK	MISDEMEANOR	FAXED	12/7/2015	0	0	10	.
WSH	3484	JAIL	KING	MISDEMEANOR	FAXED	12/7/2015	0	0	10	.
WSH	3485	JAIL	KING	MISDEMEANOR	FAXED	12/7/2015	0	0	11	.
WSH	3486	JAIL	LEWIS	FELONY	FAXED	12/7/2015	0	1	7	.
WSH	3487	JAIL	PIERCE	MISDEMEANOR	FAXED	12/7/2015	2	2	9	.
WSH	3488	JAIL	CLARK	MISDEMEANOR	FAXED	12/8/2015	0	0	14	.
WSH	3489	JAIL	CLARK	MISDEMEANOR	FAXED	12/8/2015	0	0	14	.
WSH	3490	JAIL	CLARK	MISDEMEANOR	FAXED	12/8/2015	1	1	15	.
WSH	3491	JAIL	KING	FELONY	FAXED	12/8/2015	1	1	22	.
WSH	3492	JAIL	LEWIS	MISDEMEANOR	FAXED	12/8/2015	0	0	8	.
WSH	3493	JAIL	SNOHOMISH	FELONY	FAXED	12/8/2015	1	1	10	.
WSH	3494	JAIL	SNOHOMISH	FELONY	FAXED	12/8/2015	1	1	13	.
WSH	3495	JAIL	SNOHOMISH	MISDEMEANOR	FAXED	12/8/2015	0	0	8	.
WSH	3496	JAIL	SNOHOMISH	MISDEMEANOR	FAXED	12/8/2015	0	0	16	.
WSH	3497	JAIL	THURSTON	MISDEMEANOR	FAXED	12/8/2015	0	0	8	.
WSH	3498	JAIL	WHATCOM	MISDEMEANOR	INCOMPLETE	12/8/2015	3	3	.	23
WSH	3499	JAIL	KING	FELONY	FAXED	12/9/2015	0	0	19	.
WSH	3500	JAIL	KING	MISDEMEANOR	WITHDRAWN	12/9/2015	0	0	7	.
WSH	3501	JAIL	KING	MISDEMEANOR	FAXED	12/9/2015	0	0	9	.
WSH	3502	JAIL	KING	MISDEMEANOR	FAXED	12/9/2015	0	0	13	.

WSH	3503	JAIL	PIERCE	MISDEMEANOR	FAXED	12/9/2015	0	0	14	.
WSH	3504	JAIL	SNOHOMISH	FELONY	TIC	12/9/2015	0	0	13	.
WSH	3505	JAIL	SNOHOMISH	MISDEMEANOR	FAXED	12/9/2015	1	1	13	.
WSH	3506	JAIL	THURSTON	FELONY	FAXED	12/9/2015	1	1	9	.
WSH	3507	JAIL	THURSTON	FELONY	FAXED	12/9/2015	1	1	13	.
WSH	3508	INPATIENT	WHATCOM	FELONY CLASS C	CANCELLED	12/10/2015	1	1	18	.
WSH	3509	JAIL	GRAYS HARBOR	MISDEMEANOR	FAXED	12/10/2015	1	1	13	.
WSH	3510	JAIL	KING	FELONY	FAXED	12/10/2015	0	0	13	.
WSH	3511	JAIL	KING	MISDEMEANOR	WITHDRAWN	12/10/2015	0	0	7	.
WSH	3512	JAIL	KING	MISDEMEANOR	FAXED	12/10/2015	0	0	13	.
WSH	3513	JAIL	KING	MISDEMEANOR	FAXED	12/10/2015	0	0	13	.
WSH	3514	JAIL	KING	MISDEMEANOR	FAXED	12/10/2015	0	0	13	.
WSH	3515	JAIL	PIERCE	MISDEMEANOR	FAXED	12/10/2015	0	0	13	.
WSH	3516	JAIL	PIERCE	MISDEMEANOR	FAXED	12/10/2015	0	0	14	.
WSH	3517	JAIL	SNOHOMISH	FELONY	FAXED	12/10/2015	0	0	19	.
WSH	3518	JAIL	WHATCOM	FELONY	FAXED	12/10/2015	1	1	21	.
WSH	3519	JAIL	WHATCOM	MISDEMEANOR	FAXED	12/10/2015	4	4	18	.
WSH	3520	INPATIENT	THURSTON	FELONY CLASS C	BED OFFERED	12/11/2015	11	11	.	20
WSH	3521	JAIL	JEFFERSON	FELONY	CRIC	12/11/2015	0	0	11	.
WSH	3522	JAIL	KING	MISDEMEANOR	FAXED	12/11/2015	0	0	6	.
WSH	3523	JAIL	PIERCE	MISDEMEANOR	WITHDRAWN	12/11/2015	0	0	12	.
WSH	3524	JAIL	PIERCE	MISDEMEANOR	FAXED	12/11/2015	0	0	17	.
WSH	3525	JAIL	SNOHOMISH	MISDEMEANOR	INCOMPLETE	12/11/2015	0	0	.	20
WSH	3526	JAIL	SNOHOMISH	MISDEMEANOR	FAXED	12/11/2015	0	0	11	.
WSH	3527	JAIL	THURSTON	FELONY	TIC	12/11/2015	3	3	11	.
WSH	3528	JAIL	THURSTON	FELONY	FAXED	12/11/2015	3	3	11	.
WSH	3529	JAIL	CLARK	FELONY	FAXED	12/14/2015	0	0	8	.
WSH	3530	JAIL	CLARK	FELONY	FAXED	12/14/2015	0	0	8	.
WSH	3531	JAIL	GRAYS HARBOR	FELONY	FAXED	12/14/2015	1	1	15	.
WSH	3532	JAIL	KING	FELONY	FAXED	12/14/2015	0	0	.	17

WSH	3533	JAIL	KING	FELONY	FAXED	12/14/2015	0	0	15	.
WSH	3534	JAIL	KING	MISDEMEANOR	FAXED	12/14/2015	0	0	9	.
WSH	3535	JAIL	KING	MISDEMEANOR	FAXED	12/14/2015	0	0	10	.
WSH	3536	JAIL	KITSAP	FELONY	FAXED	12/14/2015	0	0	4	.
WSH	3537	JAIL	PIERCE	MISDEMEANOR	FAXED	12/14/2015	0	0	15	.
WSH	3538	JAIL	SAN JUAN	FELONY	FAXED	12/14/2015	0	1	12	.
WSH	3539	INPATIENT	KING	MISDEMEANOR	BED OFFERED	12/15/2015	7	7	.	16
WSH	3540	INPATIENT	PIERCE	FELONY CLASS A	BED OFFERED	12/15/2015	0	0	0	.
WSH	3541	JAIL	KING	FELONY	FAXED	12/15/2015	0	0	.	16
WSH	3542	JAIL	KING	FELONY	FAXED	12/15/2015	0	0	.	16
WSH	3543	JAIL	KING	FELONY	FAXED	12/15/2015	0	0	15	.
WSH	3544	JAIL	KING	MISDEMEANOR	FAXED	12/15/2015	0	.	14	.
WSH	3545	JAIL	WHATCOM	MISDEMEANOR	TIC	12/15/2015	0	0	16	.
WSH	3546	JAIL	CLARK	FELONY	FAXED	12/16/2015	0	0	6	.
WSH	3547	JAIL	CLARK	MISDEMEANOR	FAXED	12/16/2015	1	1	6	.
WSH	3548	JAIL	JEFFERSON	MISDEMEANOR	FAXED	12/16/2015	2	2	13	.
WSH	3549	JAIL	KING	FELONY	FAXED	12/16/2015	0	0	.	15
WSH	3550	JAIL	KING	MISDEMEANOR	FAXED	12/16/2015	1	1	13	.
WSH	3551	JAIL	KING	MISDEMEANOR	FAXED	12/16/2015	2	2	14	.
WSH	3552	JAIL	PIERCE	MISDEMEANOR	FAXED	12/16/2015	0	0	.	15
WSH	3553	JAIL	PIERCE	MISDEMEANOR	FAXED	12/16/2015	0	0	.	15
WSH	3554	JAIL	PIERCE	MISDEMEANOR	FAXED	12/16/2015	0	0	.	15
WSH	3555	JAIL	SNOHOMISH	MISDEMEANOR	FAXED	12/16/2015	1	1	14	.
WSH	3556	JAIL	SNOHOMISH	MISDEMEANOR	FAXED	12/16/2015	0	0	15	.
WSH	3557	JAIL	THURSTON	MISDEMEANOR	FAXED	12/16/2015	0	0	14	.
WSH	3559	JAIL	KING	FELONY	FAXED	12/17/2015	0	0	.	14
WSH	3560	JAIL	KING	FELONY	INCOMPLETE	12/17/2015	0	0	.	14
WSH	3561	JAIL	KING	MISDEMEANOR	FAXED	12/17/2015	1	1	14	.
WSH	3562	JAIL	KING	MISDEMEANOR	WITHDRAWN	12/17/2015	1	1	.	14
WSH	3563	JAIL	SKAGIT	FELONY	FAXED	12/17/2015	1	1	.	14

WSH	3564	JAIL	KING	MISDEMEANOR	FAXED	12/18/2015	0	0	.	13
WSH	3565	JAIL	KING	MISDEMEANOR	FAXED	12/18/2015	0	0	.	13
WSH	3566	JAIL	PIERCE	MISDEMEANOR	FAXED	12/18/2015	0	0	13	.
WSH	3567	JAIL	SNOHOMISH	FELONY	FAXED	12/18/2015	0	3	.	13
WSH	3570	JAIL	CLALLAM	MISDEMEANOR	FAXED	12/21/2015	1	1	.	10
WSH	3571	JAIL	KING	FELONY	FAXED	12/21/2015	0	0	.	10
WSH	3572	JAIL	KING	MISDEMEANOR	FAXED	12/21/2015	1	1	.	10
WSH	3573	JAIL	KING	MISDEMEANOR	FAXED	12/21/2015	0	0	.	10
WSH	3574	JAIL	KING	MISDEMEANOR	FAXED	12/21/2015	0	0	.	10
WSH	3575	JAIL	KING	MISDEMEANOR	FAXED	12/21/2015	0	0	.	10
WSH	3576	JAIL	KING	MISDEMEANOR	FAXED	12/21/2015	1	1	.	10
WSH	3577	JAIL	KING	MISDEMEANOR	WITHDRAWN	12/21/2015	3	3	7	.
WSH	3578	JAIL	KING	MISDEMEANOR	FAXED	12/21/2015	2	2	8	.
WSH	3579	JAIL	KING	MISDEMEANOR	FAXED	12/21/2015	0	0	8	.
WSH	3580	JAIL	KITSAP	FELONY	FAXED	12/21/2015	0	0	9	.
WSH	3581	JAIL	MASON	MISDEMEANOR	FAXED	12/21/2015	1	1	.	10
WSH	3582	JAIL	SNOHOMISH	MISDEMEANOR	FAXED	12/21/2015	0	0	.	10
WSH	3583	JAIL	THURSTON	FELONY	FAXED	12/21/2015	0	0	.	10
WSH	3584	JAIL	THURSTON	FELONY	FAXED	12/21/2015	0	0	1	.
WSH	3585	JAIL	THURSTON	MISDEMEANOR	FAXED	12/21/2015	1	1	9	.
WSH	3586	JAIL	CLARK	FELONY	FAXED	12/22/2015	0	0	.	9
WSH	3587	JAIL	KING	FELONY	WITHDRAWN	12/22/2015	0	0	.	9
WSH	3588	JAIL	KING	FELONY	TIC	12/22/2015	0	0	.	9
WSH	3589	JAIL	KING	MISDEMEANOR	FAXED	12/22/2015	0	0	.	9
WSH	3590	JAIL	KING	MISDEMEANOR	FAXED	12/22/2015	0	0	.	9
WSH	3592	JAIL	SNOHOMISH	MISDEMEANOR	FAXED	12/22/2015	0	0	.	9
WSH	3594	INPATIENT	PIERCE	FELONY CLASS C	BED OFFERED	12/23/2015	1	1	.	8
WSH	3595	JAIL	CLARK	MISDEMEANOR	FAXED	12/23/2015	1	1	.	8
WSH	3596	JAIL	GRAYS HARBOR	MISDEMEANOR	FAXED	12/23/2015	0	0	7	.
WSH	3597	JAIL	KING	FELONY	FAXED	12/23/2015	0	0	.	8



WSH	3598	JAIL	KING	FELONY	FAXED	12/23/2015	0	0	.	8
WSH	3599	JAIL	KING	FELONY	FAXED	12/23/2015	0	0	.	8
WSH	3600	JAIL	KING	MISDEMEANOR	FAXED	12/23/2015	0	0	.	8
WSH	3601	JAIL	KING	MISDEMEANOR	FAXED	12/23/2015	0	1	.	8
WSH	3602	JAIL	PIERCE	MISDEMEANOR	FAXED	12/23/2015	0	0	8	.
WSH	3603	JAIL	PIERCE	MISDEMEANOR	CRIC	12/23/2015	0	0	.	8
WSH	3604	JAIL	PIERCE	MISDEMEANOR	FAXED	12/23/2015	0	0	8	.
WSH	3605	JAIL	THURSTON	FELONY	FAXED	12/23/2015	0	0	.	8
WSH	3606	JAIL	THURSTON	FELONY	FAXED	12/23/2015	0	0	.	8
WSH	3607	JAIL	THURSTON	FELONY	FAXED	12/23/2015	0	0	.	8
WSH	3608	JAIL	CLARK	FELONY	FAXED	12/24/2015	4	4	.	7
WSH	3609	JAIL	CLARK	FELONY	FAXED	12/24/2015	4	4	.	7
WSH	3610	JAIL	CLARK	FELONY	FAXED	12/24/2015	4	4	.	7
WSH	3611	JAIL	CLARK	MISDEMEANOR	FAXED	12/24/2015	0	0	.	7
WSH	3612	JAIL	KING	FELONY	WITHDRAWN	12/24/2015	0	0	.	7
WSH	3613	JAIL	KING	MISDEMEANOR	FAXED	12/24/2015	0	0	.	7
WSH	3614	JAIL	KING	FELONY	FAXED	12/28/2015	0	0	.	3
WSH	3615	JAIL	KING	MISDEMEANOR	FAXED	12/28/2015	0	0	.	3
WSH	3616	JAIL	KITSAP	MISDEMEANOR	FAXED	12/28/2015	0	0	.	3
WSH	3617	JAIL	KITSAP	MISDEMEANOR	FAXED	12/28/2015	0	0	.	3
WSH	3618	JAIL	LEWIS	FELONY	FAXED	12/28/2015	0	0	2	.
WSH	3619	JAIL	SNOHOMISH	MISDEMEANOR	FAXED	12/28/2015	0	0	.	3
WSH	3620	JAIL	KING	MISDEMEANOR	FAXED	12/29/2015	1	1	.	2
WSH	3621	JAIL	KING	MISDEMEANOR	FAXED	12/29/2015	0	0	.	2
WSH	3622	JAIL	KING	MISDEMEANOR	FAXED	12/29/2015	0	0	.	2
WSH	3623	JAIL	KING	MISDEMEANOR	FAXED	12/29/2015	2	2	.	2
WSH	3624	JAIL	KITSAP	MISDEMEANOR	INCOMPLETE	12/29/2015	0	0	.	2
WSH	3625	JAIL	KING	MISDEMEANOR	FAXED	12/30/2015	0	0	.	1
WSH	3626	JAIL	KING	MISDEMEANOR	WITHDRAWN	12/30/2015	0	0	.	1
WSH	3627	JAIL	THURSTON	FELONY	FAXED	12/30/2015	0	0	.	1

WSH	3628	JAIL	THURSTON	FELONY	FAXED	12/30/2015	0	0	.	1
WSH	3629	JAIL	CLARK	MISDEMEANOR	FAXED	12/31/2015	0	0	.	0
WSH	3770	JAIL	PIERCE	MISDEMEANOR	WITHDRAWN	9/9/2015	118	118	.	113
WSH	3771	INPATIENT	WHATCOM	FELONY CLASS A	BED OFFERED	11/24/2015	36	36	.	37
WSH	3772	JAIL	WHATCOM	FELONY	FAXED	12/10/2015	11	11	18	.
WSH	3773	INPATIENT	PIERCE	FELONY CLASS A	BED OFFERED	12/17/2015	4	4	.	14
WSH	3774	INPATIENT	KING	FELONY	BED OFFERED	12/17/2015	0	0	.	14
WSH	3775	INPATIENT	KING	FELONY CLASS A	BED OFFERED	12/21/2015	1	1	.	10
WSH	3776	JAIL	CLALLAM	MISDEMEANOR	FAXED	12/21/2015	10	10	.	10
WSH	3777	JAIL	PIERCE	FELONY	FAXED	12/22/2015	1	1	.	9
WSH	3778	INPATIENT	PIERCE	FELONY CLASS B	BED OFFERED	12/23/2015	1	1	.	8
WSH	3779	JAIL	THURSTON	FELONY	FAXED	12/23/2015	12	12	.	8
WSH	3780	JAIL	KING	FELONY	INCOMPLETE	12/24/2015	0	0	.	7
WSH	3781	JAIL	SNOHOMISH	MISDEMEANOR	FAXED	12/28/2015	9	9	.	3
WSH	3782	INPATIENT	KING	FELONY CLASS B	INCOMPLETE	12/29/2015	2	2	.	2
WSH	3783	INPATIENT	SNOHOMISH	FELONY CLASS B	BED OFFERED	12/29/2015	0	0	.	2
WSH	3784	JAIL	KING	MISDEMEANOR	FAXED	12/29/2015	1	1	.	2
WSH	3785	JAIL	KING	MISDEMEANOR	FAXED	12/30/2015	1	1	.	1
WSH	3786	JAIL	CLARK	MISDEMEANOR	FAXED	12/30/2015	6	6	.	1
WSH	3787	JAIL	CLARK	FELONY	INCOMPLETE	12/30/2015	1	1	.	1
WSH	3788	JAIL	KITSAP	FELONY	INCOMPLETE	12/30/2015	0	0	.	1
WSH	3789	JAIL	THURSTON	FELONY	FAXED	12/30/2015	1	1	.	1
WSH	3790	JAIL	SAN JUAN	FELONY	FAXED	12/31/2015	5	5	.	0
WSH	3791	JAIL	KING	MISDEMEANOR	FAXED	12/31/2015	4	4	.	0
WSH	3792	JAIL	CLALLAM	MISDEMEANOR	FAXED	12/31/2015	0	0	.	0
WSH	3793	JAIL	SNOHOMISH	FELONY	FAXED	12/31/2015	4	4	.	0
ESH	2328	JAIL	YAKIMA	MISDEMEANOR	FAX	8/26/2015	28	28	105	.
ESH	2531	JAIL	FRANKLIN	FELONY	FAX	9/1/2015	14	14	113	.
ESH	2566	JAIL	OKANOGAN	FELONY	FAX	9/21/2015	7	4	.	101
ESH	2570	JAIL	YAKIMA	FELONY	FAX	9/22/2015	2	3	78	.

ESH	2578	JAIL	OKANOGAN	FELONY	FAX	9/24/2015	1	.	.	98
ESH	2580	JAIL	SPOKANE	MISDEMEANOR	FAX	9/28/2015	0	0	73	.
ESH	2902	INPATIENT	YAKIMA	FELONY	ADMISSION	10/7/2015	1	8	84	.
ESH	2914	JAIL	YAKIMA	MISDEMEANOR	FAX	10/19/2015	0	14	52	.
ESH	2917	JAIL	OKANOGAN	FELONY	FAX	10/20/2015	0	0	52	.
ESH	2918	JAIL	BENTON	FELONY	FAX	10/21/2015	0	1	44	.
ESH	2919	JAIL	BENTON	FELONY	FAX	10/21/2015	0	1	42	.
ESH	2920	JAIL	BENTON	MISDEMEANOR	FAX	10/21/2015	0	0	41	.
ESH	2924	JAIL	BENTON	FELONY	FAX	10/22/2015	0	0	57	.
ESH	2925	JAIL	GRANT	FELONY	FAX	10/22/2015	0	.	.	70
ESH	2926	JAIL	OKANOGAN	FELONY	FAX	10/22/2015	0	0	48	.
ESH	2927	JAIL	PEND OREILLE	FELONY	FAX	10/22/2015	0	6	43	.
ESH	2929	JAIL	BENTON	MISDEMEANOR	FAX	10/28/2015	0	2	56	.
ESH	2930	JAIL	CHELAN	FELONY	FAX	10/28/2015	0	0	35	.
ESH	2931	JAIL	FRANKLIN	MISDEMEANOR	FAX	10/28/2015	0	0	55	.
ESH	2932	JAIL	OKANOGAN	FELONY	FAX	10/28/2015	0	0	50	.
ESH	2935	JAIL	OKANOGAN	MISDEMEANOR	FAX	10/30/2015	0	0	48	.
ESH	3055	JAIL	ASOTIN	MISDEMEANOR	FAX	10/30/2015	0	13	34	.
ESH	3242	INPATIENT	CHELAN	MISDEMEANOR	ADMISSION	10/15/2015	0	0	62	.
ESH	3245	JAIL	CHELAN	MISDEMEANOR	FAX	11/3/2015	22	22	29	.
ESH	3246	JAIL	GRANT	FELONY	FAX	11/3/2015	0	0	35	.
ESH	3249	JAIL	OKANOGAN	MISDEMEANOR	FAX	11/4/2015	0	0	37	.
ESH	3250	JAIL	SPOKANE	FELONY	FAX	11/4/2015	5	5	30	.
ESH	3251	JAIL	STEVENS	FELONY	FAX	11/4/2015	0	1	36	.
ESH	3252	JAIL	SPOKANE	MISDEMEANOR	FAX	11/5/2015	0	0	49	.
ESH	3254	JAIL	GRANT	FELONY	FAX	11/9/2015	0	0	.	52
ESH	3255	JAIL	YAKIMA	FELONY	FAX	11/9/2015	0	0	30	.
ESH	3257	INPATIENT	YAKIMA	FELONY	ADMISSION	11/12/2015	4	8	.	49
ESH	3258	JAIL	SPOKANE	FELONY	FAX	11/12/2015	5	5	42	.
ESH	3259	JAIL	SPOKANE	MISDEMEANOR	FAX	11/12/2015	1	1	40	.

ESH	3260	JAIL	FRANKLIN	MISDEMEANOR	FAX	11/16/2015	1	1	37	.
ESH	3261	JAIL	YAKIMA	MISDEMEANOR	FAX	11/16/2015	0	0	24	.
ESH	3262	JAIL	CHELAN	MISDEMEANOR	FAX	11/17/2015	1	1	24	.
ESH	3265	JAIL	YAKIMA	MISDEMEANOR	FAX	11/18/2015	0	0	23	.
ESH	3266	JAIL	BENTON	FELONY	FAX	11/19/2015	1	5	19	.
ESH	3267	JAIL	SPOKANE	FELONY	FAX	11/19/2015	0	4	25	.
ESH	3269	JAIL	YAKIMA	MISDEMEANOR	FAX	11/23/2015	0	0	22	.
ESH	3270	JAIL	CHELAN	MISDEMEANOR	FAX	11/24/2015	0	0	23	.
ESH	3271	JAIL	STEVENS	FELONY	FAX	11/24/2015	1	1	36	.
ESH	3272	JAIL	YAKIMA	MISDEMEANOR	FAX	11/24/2015	0	1	16	.
ESH	3273	JAIL	BENTON	FELONY	FAX	11/25/2015	0	7	36	.
ESH	3274	JAIL	SPOKANE	MISDEMEANOR	FAX	11/25/2015	0	0	26	.
ESH	3378	JAIL	BENTON	FELONY	FAX	8/26/2015	0	0	119	.
ESH	3381	JAIL	CHELAN	MISDEMEANOR	FAX	10/20/2015	0	10	57	.
ESH	3382	JAIL	GRANT	MISDEMEANOR	FAX	10/27/2015	3	3	50	.
ESH	3385	JAIL	BENTON	FELONY	FAX	11/19/2015	1	11	32	.
ESH	3386	JAIL	SPOKANE	FELONY	FAX	11/25/2015	6	7	27	.
ESH	3389	JAIL	OKANOGAN	FELONY	FAX	11/30/2015	1	30	.	31
ESH	3412	JAIL	BENTON	FELONY	FAX	12/16/2015	0	0	7	.
ESH	3631	INPATIENT	FRANKLIN	FELONY	ADMISSION	10/20/2015	0	1	70	.
ESH	3632	JAIL	CHELAN	MISDEMEANOR	FAX	10/20/2015	0	10	57	.
ESH	3633	INPATIENT	FRANKLIN	MISDEMEANOR	ADMISSION	10/21/2015	0	7	69	.
ESH	3634	JAIL	GRANT	MISDEMEANOR	FAX	10/27/2015	3	3	50	.
ESH	3636	JAIL	BENTON	FELONY	FAX	11/19/2015	1	11	32	.
ESH	3637	JAIL	SPOKANE	FELONY	FAX	11/25/2015	6	7	27	.
ESH	3639	JAIL	OKANOGAN	FELONY	FAX	11/30/2015	1	30	.	31
ESH	3640	JAIL	BENTON	FELONY	FAX	12/1/2015	0	1	.	30
ESH	3641	JAIL	BENTON	FELONY	FAX	12/1/2015	0	1	.	30
ESH	3642	JAIL	SPOKANE	FELONY	FAX	12/1/2015	3	6	.	30
ESH	3643	INPATIENT	YAKIMA	FELONY	ADMISSION	12/2/2015	0	0	.	29

ESH	3644	JAIL	SPOKANE	FELONY	FAX	12/2/2015	2	2	.	29
ESH	3644	INPATIENT	SPOKANE	FELONY	ADMISSION	12/2/2015	2	2	.	29
ESH	3645	JAIL	SPOKANE	MISDEMEANOR	FAX	12/2/2015	0	0	.	29
ESH	3646	JAIL	BENTON	FELONY	FAX	12/3/2015	0	0	19	.
ESH	3647	JAIL	CHELAN	MISDEMEANOR	FAX	12/3/2015	1	5	13	.
ESH	3648	JAIL	CHELAN	MISDEMEANOR	FAX	12/3/2015	1	.	26	.
ESH	3649	JAIL	BENTON	MISDEMEANOR	FAX	12/4/2015	0	5	17	.
ESH	3650	JAIL	PEND OREILLE	FELONY	FAX	12/4/2015	0	.	.	27
ESH	3651	JAIL	SPOKANE	MISDEMEANOR	FAX	12/4/2015	0	0	27	.
ESH	3652	JAIL	YAKIMA	FELONY	FAX	12/4/2015	3	4	.	27
ESH	3653	INPATIENT	CHELAN	FELONY	ADMISSION	12/7/2015	1	1	.	24
ESH	3654	JAIL	SPOKANE	FELONY	FAX	12/7/2015	8	8	.	24
ESH	3655	INPATIENT	CHELAN	MISDEMEANOR	ADMISSION	12/8/2015	1	2	.	23
ESH	3656	JAIL	KITTITAS	FELONY	FAX	12/8/2015	2	2	15	.
ESH	3657	JAIL	SPOKANE	FELONY	FAX	12/8/2015	1	1	.	23
ESH	3658	JAIL	BENTON	FELONY	FAX	12/9/2015	0	2	14	.
ESH	3659	JAIL	BENTON	MISDEMEANOR	FAX	12/9/2015	0	0	22	.
ESH	3660	JAIL	SPOKANE	FELONY	FAX	12/9/2015	2	2	.	22
ESH	3662	INPATIENT	SPOKANE	FELONY	ADMISSION	12/10/2015	1	1	.	21
ESH	3663	JAIL	SPOKANE	FELONY	FAX	12/10/2015	0	0	.	21
ESH	3664	INPATIENT	YAKIMA	FELONY	ADMISSION	12/11/2015	4	.	.	20
ESH	3665	JAIL	SPOKANE	FELONY	FAX	12/11/2015	3	3	.	20
ESH	3666	JAIL	YAKIMA	FELONY	FAX	12/11/2015	4	4	.	20
ESH	3667	JAIL	BENTON	MISDEMEANOR	FAX	12/15/2015	2	2	.	16
ESH	3668	JAIL	BENTON	MISDEMEANOR	FAX	12/16/2015	1	1	.	15
ESH	3668	JAIL	BENTON	FELONY	FAX	12/16/2015	2	2	.	15
ESH	3669	JAIL	BENTON	FELONY	FAX	12/16/2015	0	0	7	.
ESH	3670	JAIL	BENTON	MISDEMEANOR	FAX	12/16/2015	1	1	.	15
ESH	3670	JAIL	BENTON	FELONY	FAX	12/16/2015	2	2	.	15
ESH	3671	JAIL	FRANKLIN	MISDEMEANOR	FAX	12/16/2015	0	.	.	15

ESH	3672	INPATIENT	YAKIMA	FELONY	ADMISSION	12/17/2015	0	13	.	14
ESH	3673	JAIL	BENTON	MISDEMEANOR	FAX	12/17/2015	0	.	.	14
ESH	3674	JAIL	SPOKANE	FELONY	FAX	12/17/2015	1	1	.	14
ESH	3675	JAIL	SPOKANE	FELONY	FAX	12/17/2015	0	1	.	14
ESH	3676	JAIL	SPOKANE	FELONY	FAX	12/21/2015	10	10	.	10
ESH	3677	INPATIENT	FRANKLIN	FELONY	ADMISSION	12/22/2015	1	1	.	9
ESH	3678	INPATIENT	GRANT	FELONY	ADMISSION	12/22/2015	1	.	.	9
ESH	3679	JAIL	FRANKLIN	MISDEMEANOR	FAX	12/22/2015	1	1	9	.
ESH	3680	JAIL	FRANKLIN	MISDEMEANOR	FAX	12/22/2015	0	0	9	.
ESH	3681	JAIL	KITTITAS	FELONY	FAX	12/22/2015	0	2	.	9
ESH	3682	JAIL	SPOKANE	FELONY	FAX	12/22/2015	1	1	.	9
ESH	3683	JAIL	SPOKANE	FELONY	FAX	12/22/2015	1	1	.	9
ESH	3684	INPATIENT	YAKIMA	FELONY	ADMISSION	12/24/2015	4	4	.	7
ESH	3685	JAIL	SPOKANE	FELONY	FAX	12/24/2015	0	0	.	7
ESH	3686	INPATIENT	FRANKLIN	FELONY	ADMISSION	12/28/2015	2	2	.	3
ESH	3687	JAIL	CHELAN	FELONY	FAX	12/28/2015	1	.	.	3
ESH	3688	JAIL	FRANKLIN	MISDEMEANOR	FAX	12/28/2015	0	0	.	3
ESH	3689	JAIL	GRANT	FELONY	FAX	12/28/2015	2	2	.	3
ESH	3690	JAIL	YAKIMA	FELONY	FAX	12/28/2015	1	.	.	3
ESH	3691	JAIL	YAKIMA	FELONY	FAX	12/28/2015	1	.	.	3
ESH	3692	JAIL	GRANT	FELONY	FAX	12/29/2015	2	2	.	2
ESH	3693	JAIL	YAKIMA	FELONY	FAX	12/29/2015	0	1	.	2
ESH	3694	INPATIENT	YAKIMA	FELONY	ADMISSION	12/30/2015	1	1	.	1
ESH	3794	INPATIENT	SPOKANE	FELONY	ADMISSION	9/2/2015	21	21	117	.
ESH	3795	INPATIENT	ADAMS	FELONY	ADMISSION	9/18/2015	3	3	94	.
ESH	3796	INPATIENT	SPOKANE	FELONY	ADMISSION	9/30/2015	1	1	89	.
ESH	3797	JAIL	BENTON	MISDEMEANOR	FAX	11/4/2015	0	0	48	.
ESH	3798	INPATIENT	YAKIMA	MISDEMEANOR	ADMISSION	11/4/2015	.	.	.	57
ESH	3799	JAIL	CHELAN	FELONY	FAX	11/30/2015	2	2	17	.
ESH	3800	JAIL	DOUGLAS	FELONY	FAX	12/7/2015	1	1	.	24

ESH	3801	JAIL	SPOKANE	MISDEMEANOR	FAX	12/11/2015	0	0	.	20
-----	------	------	---------	-------------	-----	------------	---	---	---	----

**Appendix B: Class Member--Restoration Information for December 2015**

Hospital	Class Member	County	Offense	Completion Method or Incomplete	Order Signed Date	Number of days from signed order to:			
						Order Received	Discovery Received	Complete	Incomplete: End of Reporting Period
WSH	2288	WHATCOM	FELONY CLASS C	BED OFFERED	8/21/2015	3	3	116	.
WSH	2616	KITSAP	FELONY CLASS C	INCOMPLETE	9/16/2015	0	0	.	106
WSH	2631	CLARK	FELONY CLASS B	BED OFFERED	9/22/2015	1	1	71	.
WSH	2635	KING	MISDEMEANOR	BED OFFERED	9/22/2015	0	0	80	.
WSH	2646	PIERCE	FELONY CLASS B	BED OFFERED	9/25/2015	3	3	67	.
WSH	2942	SNOHOMISH	MISDEMEANOR	INCOMPLETE	9/21/2015	24	24	.	101
WSH	2956	KING	FELONY CLASS B	BED OFFERED	10/1/2015	0	0	62	.
WSH	2957	KING	FELONY CLASS B	BED OFFERED	10/2/2015	0	0	63	.
WSH	2958	MASON	FELONY CLASS B	BED OFFERED	10/2/2015	3	3	63	.
WSH	2959	PIERCE	FELONY CLASS A	BED OFFERED	10/2/2015	3	3	65	.
WSH	2960	PIERCE	FELONY CLASS B	BED OFFERED	10/2/2015	3	3	62	.
WSH	2961	CLARK	FELONY CLASS A	BED OFFERED	10/5/2015	2	2	63	.
WSH	2962	COWLITZ	FELONY CLASS A	BED OFFERED	10/5/2015	1	1	60	.
WSH	2964	THURSTON	FELONY CLASS B	BED OFFERED	10/5/2015	1	1	57	.
WSH	2967	KING	FELONY CLASS B	BED OFFERED	10/6/2015	1	1	62	.
WSH	2969	KING	FELONY CLASS B	BED OFFERED	10/7/2015	1	1	56	.
WSH	2973	CLARK	FELONY CLASS C	CANCELLED	10/8/2015	0	0	54	.
WSH	2974	KING	FELONY CLASS B	BED OFFERED	10/8/2015	1	1	55	.
WSH	2975	LEWIS	FELONY CLASS C	BED OFFERED	10/8/2015	0	0	54	.
WSH	2980	GRAYS HARBOR	FELONY CLASS C	BED OFFERED	10/12/2015	2	2	53	.
WSH	2982	KING	FELONY CLASS A	BED OFFERED	10/13/2015	0	0	55	.
WSH	2983	KING	FELONY CLASS B	BED OFFERED	10/13/2015	0	0	52	.
WSH	2984	MASON	FELONY CLASS C	BED OFFERED	10/13/2015	17	17	55	.
WSH	2985	CLARK	FELONY CLASS B	BED OFFERED	10/14/2015	1	1	56	.



WSH	2986	KING	FELONY CLASS A	BED OFFERED	10/14/2015	0	0	55	.
WSH	2988	PIERCE	FELONY CLASS C	BED OFFERED	10/19/2015	1	1	45	.
WSH	2990	KING	FELONY CLASS B	BED OFFERED	10/20/2015	0	0	57	.
WSH	2991	PIERCE	FELONY CLASS B	BED OFFERED	10/21/2015	2	2	58	.
WSH	2992	PIERCE	FELONY CLASS B	BED OFFERED	10/21/2015	2	2	58	.
WSH	2993	PIERCE	FELONY CLASS B	BED OFFERED	10/21/2015	2	2	43	.
WSH	2994	PIERCE	FELONY CLASS C	BED OFFERED	10/21/2015	2	2	43	.
WSH	2995	PIERCE	FELONY CLASS C	BED OFFERED	10/21/2015	2	2	43	.
WSH	3000	KING	MISDEMEANOR	INCOMPLETE	10/23/2015	0	0	.	69
WSH	3003	KING	FELONY CLASS C	INCOMPLETE	10/26/2015	1	1	.	66
WSH	3004	THURSTON	FELONY CLASS B	BED OFFERED	10/26/2015	1	1	43	.
WSH	3005	THURSTON	FELONY CLASS C	BED OFFERED	10/26/2015	1	1	43	.
WSH	3007	KING	FELONY CLASS B	BED OFFERED	10/27/2015	0	0	52	.
WSH	3008	KING	FELONY CLASS C	BED OFFERED	10/27/2015	0	0	45	.
WSH	3010	KING	FELONY CLASS C	BED OFFERED	10/28/2015	0	0	49	.
WSH	3011	PIERCE	FELONY CLASS B	BED OFFERED	10/28/2015	0	0	50	.
WSH	3012	PIERCE	FELONY CLASS C	BED OFFERED	10/28/2015	0	0	49	.
WSH	3013	LEWIS	FELONY CLASS C	BED OFFERED	10/29/2015	1	1	54	.
WSH	3014	PIERCE	FELONY CLASS A	BED OFFERED	10/29/2015	0	0	61	.
WSH	3015	SKAGIT	FELONY CLASS C	CANCELLED	10/29/2015	1	1	49	.
WSH	3067	CLARK	FELONY CLASS B	CANCELLED	10/27/2015	8	8	43	.
WSH	3282	KING	FELONY CLASS B	BED OFFERED	11/2/2015	1	1	58	.
WSH	3283	KING	FELONY CLASS C	BED OFFERED	11/2/2015	0	0	52	.
WSH	3286	PIERCE	FELONY CLASS C	BED OFFERED	11/2/2015	1	1	49	.
WSH	3287	KING	FELONY CLASS A	BED OFFERED	11/4/2015	0	0	.	57
WSH	3288	KING	FELONY CLASS B	INCOMPLETE	11/4/2015	0	0	.	57
WSH	3289	KING	FELONY CLASS C	BED OFFERED	11/4/2015	0	0	47	.
WSH	3291	PIERCE	FELONY CLASS A	BED OFFERED	11/4/2015	2	2	.	57
WSH	3292	PIERCE	FELONY CLASS B	BED OFFERED	11/4/2015	1	1	47	.
WSH	3293	PIERCE	FELONY CLASS C	CANCELLED	11/4/2015	2	2	47	.

WSH	3295	THURSTON	FELONY CLASS B	BED OFFERED	11/4/2015	0	0	57	.
WSH	3296	CLARK	FELONY CLASS C	CANCELLED	11/5/2015	0	0	55	.
WSH	3301	KING	FELONY CLASS B	BED OFFERED	11/9/2015	3	3	.	52
WSH	3302	PIERCE	FELONY CLASS C	BED OFFERED	11/10/2015	2	2	50	.
WSH	3306	KING	MISDEMEANOR	BED OFFERED	11/16/2015	0	0	15	.
WSH	3307	PIERCE	FELONY CLASS C	BED OFFERED	11/16/2015	1	1	.	45
WSH	3309	CLARK	FELONY CLASS C	BED OFFERED	11/17/2015	0	0	.	44
WSH	3311	KING	FELONY CLASS B	INCOMPLETE	11/17/2015	0	0	.	44
WSH	3312	SNOHOMISH	FELONY CLASS C	BED OFFERED	11/17/2015	0	0	.	44
WSH	3313	CLARK	FELONY CLASS C	BED OFFERED	11/18/2015	1	1	.	43
WSH	3314	KING	MISDEMEANOR	BED OFFERED	11/18/2015	1	1	13	.
WSH	3315	SNOHOMISH	FELONY CLASS B	BED OFFERED	11/18/2015	1	1	.	43
WSH	3316	KING	FELONY CLASS A	BED OFFERED	11/19/2015	1	1	.	42
WSH	3317	KING	FELONY CLASS B	BED OFFERED	11/19/2015	0	0	.	42
WSH	3318	SNOHOMISH	FELONY CLASS C	BED OFFERED	11/19/2015	0	0	.	42
WSH	3319	PIERCE	FELONY CLASS B	BED OFFERED	11/20/2015	0	0	.	41
WSH	3321	GRAYS HARBOR	FELONY CLASS C	BED OFFERED	11/23/2015	1	1	.	38
WSH	3322	PIERCE	FELONY CLASS A	BED OFFERED	11/23/2015	0	0	.	38
WSH	3390	PIERCE	FELONY CLASS A	BED OFFERED	9/25/2015	0	14	67	.
WSH	3391	PIERCE	FELONY CLASS C	CANCELLED	11/13/2015	21	21	28	.
WSH	3392	PIERCE	FELONY	BED OFFERED	11/18/2015	1	1	.	43
WSH	3393	PIERCE	FELONY CLASS C	BED OFFERED	11/18/2015	1	1	.	43
WSH	3394	PIERCE	FELONY CLASS C	BED OFFERED	11/19/2015	4	20	.	42
WSH	3395	CLARK	FELONY CLASS C	BED OFFERED	11/20/2015	3	3	.	41
WSH	3396	SNOHOMISH	FELONY CLASS A	BED OFFERED	11/23/2015	0	0	.	38
WSH	3397	PIERCE	MISDEMEANOR	BED OFFERED	11/24/2015	1	14	21	.
WSH	3398	PIERCE	FELONY CLASS B	BED OFFERED	11/24/2015	1	1	.	37
WSH	3399	PIERCE	FELONY CLASS B	BED OFFERED	11/25/2015	5	5	7	.
WSH	3400	KITSAP	GROSS MISDEMEANOR	BED OFFERED	11/25/2015	7	7	22	.

WSH	3401	PIERCE	MISDEMEANOR	BED OFFERED	11/25/2015	6	10	27	.
WSH	3402	KING	FELONY CLASS B	BED OFFERED	11/25/2015	0	0	.	36
WSH	3405	THURSTON	FELONY CLASS C	BED OFFERED	11/30/2015	0	0	.	31
WSH	3712	KING	FELONY CLASS B	BED OFFERED	12/1/2015	0	0	0	.
WSH	3713	CLARK	FELONY CLASS C	BED OFFERED	12/2/2015	6	6	.	29
WSH	3714	KING	FELONY CLASS B	BED OFFERED	12/2/2015	0	0	0	.
WSH	3715	PIERCE	FELONY CLASS B	BED OFFERED	12/2/2015	1	1	.	29
WSH	3716	PIERCE	FELONY CLASS B	BED OFFERED	12/2/2015	1	1	.	29
WSH	3717	PIERCE	FELONY CLASS B	BED OFFERED	12/2/2015	1	1	6	.
WSH	3718	PIERCE	FELONY CLASS C	INCOMPLETE	12/2/2015	1	1	.	29
WSH	3719	PIERCE	FELONY CLASS C	BED OFFERED	12/2/2015	6	7	.	29
WSH	3720	SNOHOMISH	MISDEMEANOR	BED OFFERED	12/2/2015	1	1	16	.
WSH	3721	THURSTON	MISDEMEANOR	BED OFFERED	12/2/2015	1	1	13	.
WSH	3723	JEFFERSON	FELONY CLASS C	BED OFFERED	12/4/2015	11	11	20	.
WSH	3724	PIERCE	MISDEMEANOR	BED OFFERED	12/4/2015	0	12	20	.
WSH	3725	KING	FELONY CLASS B	BED OFFERED	12/7/2015	0	0	.	24
WSH	3726	KING	FELONY CLASS C	BED OFFERED	12/7/2015	0	0	.	24
WSH	3727	THURSTON	MISDEMEANOR	BED OFFERED	12/7/2015	0	0	9	.
WSH	3728	THURSTON	MISDEMEANOR	BED OFFERED	12/7/2015	0	0	10	.
WSH	3729	CLARK	MISDEMEANOR	BED OFFERED	12/8/2015	6	6	20	.
WSH	3730	SNOHOMISH	FELONY CLASS B	BED OFFERED	12/8/2015	0	0	0	.
WSH	3731	PIERCE	FELONY CLASS C	BED OFFERED	12/9/2015	9	13	.	22
WSH	3732	CLARK	FELONY CLASS C	BED OFFERED	12/10/2015	1	1	.	21
WSH	3733	KING	FELONY CLASS B	BED OFFERED	12/10/2015	0	0	0	.
WSH	3734	KING	MISDEMEANOR	BED OFFERED	12/10/2015	1	1	20	.
WSH	3735	SNOHOMISH	FELONY CLASS C	INCOMPLETE	12/10/2015	1	5	.	21
WSH	3736	CLARK	FELONY CLASS B	INCOMPLETE	12/11/2015	3	3	.	20
WSH	3737	THURSTON	MISDEMEANOR	BED OFFERED	12/11/2015	3	3	.	20
WSH	3738	KING	FELONY CLASS B	INCOMPLETE	12/14/2015	0	0	.	17
WSH	3739	MASON	FELONY CLASS C	BED OFFERED	12/14/2015	0	0	.	17

WSH	3740	KING	FELONY CLASS C	BED OFFERED	12/15/2015	0	0	.	16
WSH	3741	KING	FELONY CLASS C	INCOMPLETE	12/15/2015	1	1	.	16
WSH	3742	CLARK	FELONY CLASS C	INCOMPLETE	12/16/2015	0	0	.	15
WSH	3743	KING	FELONY CLASS C	INCOMPLETE	12/16/2015	0	0	.	15
WSH	3744	KING	MISDEMEANOR	BED OFFERED	12/16/2015	1	1	.	15
WSH	3745	KING	FELONY	INCOMPLETE	12/22/2015	0	0	.	9
WSH	3746	KING	FELONY CLASS B	BED OFFERED	12/22/2015	0	0	0	.
WSH	3747	KING	FELONY CLASS B	BED OFFERED	12/22/2015	0	0	0	.
WSH	3748	KITSAP	FELONY CLASS C	INCOMPLETE	12/22/2015	1	1	.	9
WSH	3749	PIERCE	FELONY CLASS C	BED OFFERED	12/22/2015	0	0	0	.
WSH	3750	SNOHOMISH	FELONY CLASS C	INCOMPLETE	12/22/2015	1	1	.	9
WSH	3751	KING	FELONY CLASS B	BED OFFERED	12/23/2015	0	0	0	.
WSH	3752	KING	FELONY CLASS C	INCOMPLETE	12/23/2015	0	0	.	8
WSH	3753	KING	FELONY CLASS C	BED OFFERED	12/23/2015	0	0	0	.
WSH	3754	KING	FELONY CLASS B	BED OFFERED	12/28/2015	0	0	0	.
WSH	3755	KING	GROSS MISDEMEANOR	BED OFFERED	12/28/2015	0	0	.	3
WSH	3756	PIERCE	FELONY CLASS C	BED OFFERED	12/29/2015	0	0	0	.
WSH	3757	PIERCE	FELONY CLASS C	BED OFFERED	12/31/2015	0	0	0	.
WSH	3802	PIERCE	FELONY CLASS A	BED OFFERED	11/30/2015	0	0	.	31
WSH	3803	PIERCE	FELONY CLASS B	BED OFFERED	11/25/2015	6	6	.	36
WSH	3804	PIERCE	FELONY CLASS B	INCOMPLETE	12/16/2015	1	1	.	15
WSH	3805	LEWIS	FELONY CLASS B	INCOMPLETE	12/17/2015	0	0	.	14
WSH	3806	SKAGIT	FELONY CLASS C	INCOMPLETE	12/17/2015	1	1	.	14
WSH	3807	CLALLAM	MISDEMEANOR	BED OFFERED	12/17/2015	1	1	.	14
WSH	3808	PIERCE	FELONY CLASS A	INCOMPLETE	12/18/2015	0	0	.	13
WSH	3809	THURSTON	FELONY CLASS C	INCOMPLETE	12/21/2015	0	0	.	10
WSH	3810	SNOHOMISH	FELONY CLASS A	INCOMPLETE	12/21/2015	0	0	.	10
WSH	3811	WHATCOM	FELONY CLASS C	INCOMPLETE	12/23/2015	0	0	.	8
WSH	3812	KING	FELONY CLASS B	INCOMPLETE	12/23/2015	0	0	.	8

WSH	3813	PIERCE	0	BED OFFERED	12/24/2015	0	0	0	.
WSH	3814	SNOHOMISH	FELONY CLASS C	INCOMPLETE	12/23/2015	1	1	.	8
WSH	3815	PIERCE	FELONY CLASS C	INCOMPLETE	12/23/2015	1	1	.	8
WSH	3816	CLARK	FELONY CLASS C	INCOMPLETE	12/23/2015	1	1	.	8
WSH	3817	PIERCE	FELONY CLASS A	INCOMPLETE	12/24/2015	0	0	.	7
WSH	3818	PIERCE	MISDEMEANOR	BED OFFERED	12/24/2015	4	4	.	7
WSH	3819	KING	FELONY CLASS B	INCOMPLETE	12/28/2015	0	0	.	3
WSH	3820	CLARK	FELONY CLASS C	INCOMPLETE	12/29/2015	1	1	.	2
WSH	3821	KING	MISDEMEANOR	BED OFFERED	12/30/2015	0	0	.	1
WSH	3822	PIERCE	FELONY CLASS B	INCOMPLETE	12/30/2015	1	1	.	1
WSH	3823	SNOHOMISH	FELONY CLASS B	INCOMPLETE	12/31/2015	0	0	.	0
WSH	3824	LEWIS	FELONY CLASS B	INCOMPLETE	12/31/2015	0	0	.	0
ESH	2335	CHELAN	FELONY	ADMISSION	8/28/2015	3	3	103	.
ESH	2654	OKANOGAN	FELONY	ADMISSION	9/4/2015	0	0	103	.
ESH	2656	BENTON	FELONY	ADMISSION	9/8/2015	15	15	100	.
ESH	2657	WALLA WALLA	FELONY	ADMISSION	9/8/2015	3	3	98	.
ESH	2658	SPOKANE	FELONY	ADMISSION	9/11/2015	0	3	94	.
ESH	2663	BENTON	MISDEMEANOR	ADMISSION	9/25/2015	0	0	84	.
ESH	2664	CHELAN	FELONY	ADMISSION	9/28/2015	0	0	79	.
ESH	2665	BENTON	FELONY	ADMISSION	9/29/2015	0	0	79	.
ESH	3020	BENTON	FELONY	ADMISSION	9/24/2015	0	0	83	.
ESH	3020	BENTON	FELONY	ADMISSION	9/24/2015	0	0	84	.
ESH	3329	BENTON	FELONY	ADMISSION	11/12/2015	1	4	36	.
ESH	3332	SPOKANE	FELONY	ADMISSION	11/20/2015	0	0	.	41
ESH	3333	BENTON	FELONY	ADMISSION	11/25/2015	0	5	22	.
ESH	3340	FRANKLIN	FELONY	ADMISSION	10/27/2015	42	42	.	65
ESH	3406	SPOKANE	FELONY	ADMISSION	8/20/2015	5	5	113	.
ESH	3407	SPOKANE	FELONY	ADMISSION	8/24/2015	0	0	109	.
ESH	3408	CHELAN	FELONY	ADMISSION	8/31/2015	1	1	100	.
ESH	3409	SPOKANE	MISDEMEANOR	ADMISSION	9/16/2015	1	1	89	.

ESH	3410	CHELAN	MISDEMEANOR	ADMISSION	10/6/2015	24	24	71	.
ESH	3411	YAKIMA	FELONY	ADMISSION	10/13/2015	1	0	78	.
ESH	3764	SPOKANE	FELONY	ADMISSION	12/3/2015	0	0	.	28
ESH	3765	CHELAN	FELONY	ADMISSION	12/7/2015	1	1	.	24
ESH	3766	STEVENS	FELONY	ADMISSION	12/15/2015	0	0	.	16
ESH	3767	PEND OREILLE	FELONY	ADMISSION	12/17/2015	1	1	.	14
ESH	3768	YAKIMA	FELONY	ADMISSION	12/18/2015	0	0	.	13
ESH	3769	CHELAN	MISDEMEANOR	ADMISSION	12/22/2015	0	0	.	9

**Appendix C: Class Member--Evaluation Information for January 2016**

Hospital	Class Member	Location	County	Offense	Completion Method or Incomplete	Order Signed Date	Number of days from signed order to:			
							Order Received	Discovery Received	Complete	Incomplete: End of Reporting Period
WSH	3180	JAIL	CLARK	MISDEMEANOR	EVAL CLOSED	11/13/2015	0	0	12	.
WSH	3182	JAIL	MASON	FELONY	INCOMPLETE	11/13/2015	3	3	.	79
WSH	3199	JAIL	PIERCE	MISDEMEANOR	INCOMPLETE	11/17/2015	3	3	.	75
WSH	3210	JAIL	SNOHOMISH	FELONY	FAXED	11/19/2015	0	0	48	.
WSH	3376	JAIL	KING	MISDEMEANOR	INCOMPLETE	11/30/2015	1	1	.	62
WSH	3462	JAIL	KING	FELONY	FAXED	12/3/2015	0	0	50	.
WSH	3473	JAIL	KING	MISDEMEANOR	INCOMPLETE	12/4/2015	0	0	.	58
WSH	3498	JAIL	WHATCOM	MISDEMEANOR	INCOMPLETE	12/8/2015	3	3	.	54
WSH	3520	INPATIENT	THURSTON	FELONY CLASS C	BED OFFERED	12/11/2015	11	11	28	.
WSH	3525	JAIL	SNOHOMISH	MISDEMEANOR	INCOMPLETE	12/11/2015	0	0	.	51
WSH	3532	JAIL	KING	FELONY	FAXED	12/14/2015	0	0	22	.
WSH	3539	INPATIENT	KING	MISDEMEANOR	BED OFFERED	12/15/2015	7	7	23	.
WSH	3541	JAIL	KING	FELONY	FAXED	12/15/2015	0	0	21	.
WSH	3542	JAIL	KING	FELONY	FAXED	12/15/2015	0	0	24	.
WSH	3549	JAIL	KING	FELONY	FAXED	12/16/2015	0	0	35	.
WSH	3552	JAIL	PIERCE	MISDEMEANOR	FAXED	12/16/2015	0	0	20	.
WSH	3553	JAIL	PIERCE	MISDEMEANOR	FAXED	12/16/2015	0	0	19	.
WSH	3554	JAIL	PIERCE	MISDEMEANOR	FAXED	12/16/2015	0	0	19	.
WSH	3559	JAIL	KING	FELONY	FAXED	12/17/2015	0	0	34	.
WSH	3560	JAIL	KING	FELONY	INCOMPLETE	12/17/2015	0	0	.	45
WSH	3562	JAIL	KING	MISDEMEANOR	WITHDRAWN	12/17/2015	1	1	34	.
WSH	3563	JAIL	SKAGIT	FELONY	FAXED	12/17/2015	1	1	25	.
WSH	3564	JAIL	KING	MISDEMEANOR	FAXED	12/18/2015	0	0	20	.
WSH	3565	JAIL	KING	MISDEMEANOR	FAXED	12/18/2015	0	0	18	.

WSH	3567	JAIL	SNOHOMISH	FELONY	FAXED	12/18/2015	0	3	20	.
WSH	3570	JAIL	CLALLAM	MISDEMEANOR	FAXED	12/21/2015	1	1	18	.
WSH	3571	JAIL	KING	FELONY	FAXED	12/21/2015	0	0	30	.
WSH	3572	JAIL	KING	MISDEMEANOR	FAXED	12/21/2015	1	1	17	.
WSH	3573	JAIL	KING	MISDEMEANOR	FAXED	12/21/2015	0	0	16	.
WSH	3574	JAIL	KING	MISDEMEANOR	FAXED	12/21/2015	0	0	16	.
WSH	3575	JAIL	KING	MISDEMEANOR	FAXED	12/21/2015	0	0	31	.
WSH	3576	JAIL	KING	MISDEMEANOR	FAXED	12/21/2015	1	1	17	.
WSH	3581	JAIL	MASON	MISDEMEANOR	FAXED	12/21/2015	1	1	14	.
WSH	3582	JAIL	SNOHOMISH	MISDEMEANOR	FAXED	12/21/2015	0	0	17	.
WSH	3583	JAIL	THURSTON	FELONY	FAXED	12/21/2015	0	0	14	.
WSH	3586	JAIL	CLARK	FELONY	FAXED	12/22/2015	0	0	17	.
WSH	3587	JAIL	KING	FELONY	WITHDRAWN	12/22/2015	0	0	16	.
WSH	3588	JAIL	KING	FELONY	TIC	12/22/2015	0	0	23	.
WSH	3589	JAIL	KING	MISDEMEANOR	FAXED	12/22/2015	0	0	14	.
WSH	3590	JAIL	KING	MISDEMEANOR	FAXED	12/22/2015	0	0	17	.
WSH	3592	JAIL	SNOHOMISH	MISDEMEANOR	FAXED	12/22/2015	0	0	14	.
WSH	3594	INPATIENT	PIERCE	FELONY CLASS C	BED OFFERED	12/23/2015	1	1	22	.
WSH	3595	JAIL	CLARK	MISDEMEANOR	FAXED	12/23/2015	1	1	15	.
WSH	3597	JAIL	KING	FELONY	FAXED	12/23/2015	0	0	26	.
WSH	3598	JAIL	KING	FELONY	FAXED	12/23/2015	0	0	27	.
WSH	3599	JAIL	KING	FELONY	FAXED	12/23/2015	0	0	21	.
WSH	3600	JAIL	KING	MISDEMEANOR	FAXED	12/23/2015	0	0	12	.
WSH	3601	JAIL	KING	MISDEMEANOR	FAXED	12/23/2015	0	1	19	.
WSH	3603	JAIL	PIERCE	MISDEMEANOR	CRIC	12/23/2015	0	0	14	.
WSH	3605	JAIL	THURSTON	FELONY	FAXED	12/23/2015	0	0	13	.
WSH	3606	JAIL	THURSTON	FELONY	FAXED	12/23/2015	0	0	13	.
WSH	3607	JAIL	THURSTON	FELONY	FAXED	12/23/2015	0	0	14	.
WSH	3608	JAIL	CLARK	FELONY	FAXED	12/24/2015	4	4	13	.
WSH	3609	JAIL	CLARK	FELONY	FAXED	12/24/2015	4	4	18	.
WSH	3610	JAIL	CLARK	FELONY	FAXED	12/24/2015	4	4	20	.
WSH	3611	JAIL	CLARK	MISDEMEANOR	FAXED	12/24/2015	0	0	15	.
WSH	3612	JAIL	KING	FELONY	WITHDRAWN	12/24/2015	0	0	15	.
WSH	3613	JAIL	KING	MISDEMEANOR	FAXED	12/24/2015	0	0	13	.
WSH	3614	JAIL	KING	FELONY	FAXED	12/28/2015	0	0	18	.



WSH	3615	JAIL	KING	MISDEMEANOR	FAXED	12/28/2015	0	0	11	.
WSH	3616	JAIL	KITSAP	MISDEMEANOR	FAXED	12/28/2015	0	0	13	.
WSH	3617	JAIL	KITSAP	MISDEMEANOR	FAXED	12/28/2015	0	0	9	.
WSH	3619	JAIL	SNOHOMISH	MISDEMEANOR	FAXED	12/28/2015	0	0	14	.
WSH	3620	JAIL	KING	MISDEMEANOR	FAXED	12/29/2015	1	1	10	.
WSH	3621	JAIL	KING	MISDEMEANOR	FAXED	12/29/2015	0	0	10	.
WSH	3622	JAIL	KING	MISDEMEANOR	FAXED	12/29/2015	0	0	15	.
WSH	3623	JAIL	KING	MISDEMEANOR	FAXED	12/29/2015	2	2	13	.
WSH	3624	JAIL	KITSAP	MISDEMEANOR	INCOMPLETE	12/29/2015	0	0	.	33
WSH	3625	JAIL	KING	MISDEMEANOR	FAXED	12/30/2015	0	0	14	.
WSH	3626	JAIL	KING	MISDEMEANOR	WITHDRAWN	12/30/2015	0	0	7	.
WSH	3627	JAIL	THURSTON	FELONY	FAXED	12/30/2015	0	0	7	.
WSH	3628	JAIL	THURSTON	FELONY	FAXED	12/30/2015	0	0	8	.
WSH	3629	JAIL	CLARK	MISDEMEANOR	FAXED	12/31/2015	0	0	6	.
WSH	3770	JAIL	PIERCE	MISDEMEANOR	WITHDRAWN	9/9/2015	118	118	119	.
WSH	3771	INPATIENT	WHATCOM	FELONY CLASS A	BED OFFERED	11/24/2015	36	36	56	.
WSH	3773	INPATIENT	PIERCE	FELONY CLASS A	BED OFFERED	12/17/2015	4	4	34	.
WSH	3774	INPATIENT	KING	FELONY	BED OFFERED	12/17/2015	0	0	33	.
WSH	3775	INPATIENT	KING	FELONY CLASS A	BED OFFERED	12/21/2015	1	1	29	.
WSH	3776	JAIL	CLALLAM	MISDEMEANOR	FAXED	12/21/2015	10	10	18	.
WSH	3777	JAIL	PIERCE	FELONY	FAXED	12/22/2015	1	1	15	.
WSH	3778	INPATIENT	PIERCE	FELONY CLASS B	BED OFFERED	12/23/2015	1	1	23	.
WSH	3779	JAIL	THURSTON	FELONY	FAXED	12/23/2015	12	12	23	.
WSH	3780	JAIL	KING	FELONY	FAXED	12/24/2015	0	0	29	.
WSH	3781	JAIL	SNOHOMISH	MISDEMEANOR	FAXED	12/28/2015	9	9	16	.
WSH	3782	INPATIENT	KING	FELONY CLASS B	BED OFFERED	12/29/2015	2	2	30	.
WSH	3783	INPATIENT	SNOHOMISH	FELONY CLASS B	BED OFFERED	12/29/2015	0	0	24	.
WSH	3784	JAIL	KING	MISDEMEANOR	FAXED	12/29/2015	1	1	14	.
WSH	3785	JAIL	KING	MISDEMEANOR	FAXED	12/30/2015	1	1	14	.
WSH	3786	JAIL	CLARK	MISDEMEANOR	FAXED	12/30/2015	6	6	14	.
WSH	3787	JAIL	CLARK	FELONY	INCOMPLETE	12/30/2015	1	1	.	32
WSH	3788	JAIL	KITSAP	FELONY	INCOMPLETE	12/30/2015	0	0	.	32
WSH	3789	JAIL	THURSTON	FELONY	FAXED	12/30/2015	1	1	7	.
WSH	3790	JAIL	SAN JUAN	FELONY	FAXED	12/31/2015	5	5	19	.
WSH	3791	JAIL	KING	MISDEMEANOR	FAXED	12/31/2015	4	4	8	.

WSH	3792	JAIL	CLALLAM	MISDEMEANOR	FAXED	12/31/2015	0	0	8	.
WSH	3793	JAIL	SNOHOMISH	FELONY	FAXED	12/31/2015	4	4	9	.
WSH	3825	JAIL	SKAGIT	FELONY	INCOMPLETE	11/17/2015	36	.	.	75
WSH	3826	JAIL	ISLAND	FELONY	INCOMPLETE	12/14/2015	1	1	.	48
WSH	3827	JAIL	KING	MISDEMEANOR	FAXED	1/2/2016	2	2	12	.
WSH	3828	JAIL	LEWIS	FELONY	FAXED	1/4/2016	0	0	3	.
WSH	3829	JAIL	SNOHOMISH	FELONY	FAXED	1/4/2016	0	0	5	.
WSH	3830	JAIL	PIERCE	MISDEMEANOR	FAXED	1/4/2016	1	1	7	.
WSH	3831	JAIL	KING	MISDEMEANOR	FAXED	1/4/2016	0	0	9	.
WSH	3832	JAIL	CLALLAM	MISDEMEANOR	FAXED	1/4/2016	2	.	9	.
WSH	3833	JAIL	KING	MISDEMEANOR	FAXED	1/4/2016	0	0	10	.
WSH	3834	JAIL	KING	FELONY	FAXED	1/4/2016	0	0	11	.
WSH	3835	JAIL	KITSAP	MISDEMEANOR	FAXED	1/4/2016	0	0	15	.
WSH	3836	JAIL	KING	FELONY	FAXED	1/4/2016	1	1	21	.
WSH	3837	INPATIENT	WAHKIAKUM	FELONY CLASS B	BED OFFERED	1/4/2016	2	2	25	.
WSH	3838	JAIL	KING	MISDEMEANOR	WITHDRAWN	1/5/2016	0	0	2	.
WSH	3839	JAIL	GRAYS HARBOR	MISDEMEANOR	FAXED	1/5/2016	0	0	3	.
WSH	3840	JAIL	KING	MISDEMEANOR	FAXED	1/5/2016	0	0	7	.
WSH	3841	JAIL	KING	MISDEMEANOR	FAXED	1/5/2016	0	0	8	.
WSH	3842	JAIL	KING	MISDEMEANOR	TIC	1/5/2016	0	0	9	.
WSH	3843	JAIL	KITSAP	MISDEMEANOR	FAXED	1/5/2016	0	0	9	.
WSH	3844	JAIL	KING	MISDEMEANOR	FAXED	1/5/2016	0	0	10	.
WSH	3845	JAIL	KING	FELONY	FAXED	1/5/2016	0	0	10	.
WSH	3846	JAIL	KING	FELONY	FAXED	1/5/2016	1	1	14	.
WSH	3847	JAIL	KING	FELONY	FAXED	1/5/2016	0	0	17	.
WSH	3848	INPATIENT	KING	MISDEMEANOR	INCOMPLETE	1/5/2016	9	9	.	26
WSH	3849	JAIL	PIERCE	MISDEMEANOR	FAXED	1/6/2016	0	0	6	.
WSH	3850	JAIL	CLARK	FELONY	FAXED	1/6/2016	0	0	7	.
WSH	3851	JAIL	SNOHOMISH	MISDEMEANOR	FAXED	1/6/2016	2	2	7	.
WSH	3852	JAIL	KING	MISDEMEANOR	FAXED	1/6/2016	0	0	7	.
WSH	3853	JAIL	THURSTON	FELONY	FAXED	1/6/2016	0	0	8	.
WSH	3854	JAIL	THURSTON	FELONY	FAXED	1/6/2016	1	1	9	.
WSH	3855	JAIL	THURSTON	FELONY	FAXED	1/6/2016	1	1	9	.
WSH	3856	INPATIENT	PIERCE	MISDEMEANOR	BED OFFERED	1/6/2016	0	0	15	.
WSH	3857	JAIL	LEWIS	MISDEMEANOR	INCOMPLETE	1/6/2016	0	0	.	25

WSH	3858	JAIL	KING	MISDEMEANOR	WITHDRAWN	1/7/2016	0	0	5	.
WSH	3859	JAIL	CLARK	MISDEMEANOR	FAXED	1/7/2016	0	0	6	.
WSH	3860	JAIL	GRAYS HARBOR	MISDEMEANOR	FAXED	1/7/2016	0	0	7	.
WSH	3861	JAIL	KING	MISDEMEANOR	CRIC	1/7/2016	0	0	7	.
WSH	3862	JAIL	GRAYS HARBOR	MISDEMEANOR	FAXED	1/7/2016	0	0	8	.
WSH	3863	INPATIENT	WHATCOM	MISDEMEANOR	BED OFFERED	1/7/2016	4	4	14	.
WSH	3864	INPATIENT	KING	FELONY CLASS C	BED OFFERED	1/7/2016	1	1	15	.
WSH	3865	JAIL	CLARK	FELONY	FAXED	1/7/2016	0	0	15	.
WSH	3866	JAIL	KING	FELONY	FAXED	1/7/2016	0	0	.	24
WSH	3867	JAIL	PIERCE	MISDEMEANOR	FAXED	1/8/2016	0	0	5	.
WSH	3868	JAIL	THURSTON	FELONY	FAXED	1/8/2016	0	0	5	.
WSH	3869	JAIL	SNOHOMISH	MISDEMEANOR	FAXED	1/8/2016	0	0	6	.
WSH	3870	JAIL	KING	MISDEMEANOR	FAXED	1/8/2016	0	0	6	.
WSH	3871	JAIL	CLALLAM	MISDEMEANOR	FAXED	1/8/2016	7	7	18	.
WSH	3872	INPATIENT	PIERCE	FELONY CLASS A	BED OFFERED	1/8/2016	0	0	20	.
WSH	3873	JAIL	WHATCOM	FELONY	FAXED	1/8/2016	12	12	21	.
WSH	3874	JAIL	PIERCE	FELONY	INCOMPLETE	1/8/2016	12	17	.	23
WSH	3875	JAIL	KING	MISDEMEANOR	FAXED	1/9/2016	0	0	11	.
WSH	3876	JAIL	KING	MISDEMEANOR	FAXED	1/9/2016	0	0	18	.
WSH	3877	JAIL	KING	MISDEMEANOR	FAXED	1/11/2016	0	0	7	.
WSH	3878	JAIL	PIERCE	MISDEMEANOR	FAXED	1/11/2016	0	0	8	.
WSH	3879	JAIL	PIERCE	MISDEMEANOR	FAXED	1/11/2016	0	0	9	.
WSH	3880	JAIL	KING	MISDEMEANOR	FAXED	1/11/2016	0	0	9	.
WSH	3881	JAIL	KING	MISDEMEANOR	FAXED	1/11/2016	0	0	10	.
WSH	3882	JAIL	KING	FELONY	FAXED	1/11/2016	0	0	14	.
WSH	3883	JAIL	KING	MISDEMEANOR	FAXED	1/11/2016	0	0	15	.
WSH	3884	JAIL	KING	MISDEMEANOR	FAXED	1/11/2016	0	0	16	.
WSH	3885	JAIL	KING	MISDEMEANOR	FAXED	1/11/2016	0	0	17	.
WSH	3886	JAIL	SNOHOMISH	FELONY	FAXED	1/11/2016	0	0	18	.
WSH	3887	JAIL	KING	MISDEMEANOR	FAXED	1/11/2016	1	1	18	.
WSH	3888	JAIL	KING	FELONY	INCOMPLETE	1/11/2016	0	0	.	20
WSH	3889	JAIL	SNOHOMISH	FELONY	INCOMPLETE	1/11/2016	2	2	.	20
WSH	3890	JAIL	KING	MISDEMEANOR	FAXED	1/12/2016	0	0	7	.
WSH	3891	JAIL	KING	MISDEMEANOR	FAXED	1/12/2016	0	0	8	.
WSH	3892	JAIL	KING	MISDEMEANOR	FAXED	1/12/2016	0	0	9	.

WSH	3893	JAIL	CLARK	MISDEMEANOR	FAXED	1/12/2016	1	1	14	.
WSH	3894	JAIL	KING	MISDEMEANOR	INCOMPLETE	1/12/2016	0	0	.	19
WSH	3895	JAIL	KING	MISDEMEANOR	FAXED	1/13/2016	0	0	7	.
WSH	3896	JAIL	PIERCE	MISDEMEANOR	FAXED	1/13/2016	0	0	7	.
WSH	3897	JAIL	KING	MISDEMEANOR	FAXED	1/13/2016	0	0	7	.
WSH	3898	JAIL	KING	MISDEMEANOR	FAXED	1/13/2016	0	0	7	.
WSH	3899	JAIL	KING	MISDEMEANOR	TIC	1/13/2016	0	0	13	.
WSH	3900	JAIL	CLARK	FELONY	FAXED	1/13/2016	0	0	13	.
WSH	3901	JAIL	THURSTON	FELONY	FAXED	1/13/2016	0	0	13	.
WSH	3902	JAIL	KING	MISDEMEANOR	FAXED	1/13/2016	14	14	14	.
WSH	3903	JAIL	KING	FELONY	INCOMPLETE	1/13/2016	0	0	.	18
WSH	3904	JAIL	KING	FELONY	INCOMPLETE	1/13/2016	0	0	.	18
WSH	3905	JAIL	THURSTON	FELONY	INCOMPLETE	1/13/2016	0	0	.	18
WSH	3906	JAIL	THURSTON	FELONY	INCOMPLETE	1/13/2016	0	0	.	18
WSH	3907	JAIL	KING	FELONY	INCOMPLETE	1/13/2016	0	0	.	18
WSH	3908	JAIL	KING	MISDEMEANOR	FAXED	1/14/2016	0	0	1	.
WSH	3909	JAIL	SNOHOMISH	MISDEMEANOR	FAXED	1/14/2016	0	0	1	.
WSH	3910	JAIL	SNOHOMISH	MISDEMEANOR	FAXED	1/14/2016	0	0	5	.
WSH	3911	JAIL	KING	MISDEMEANOR	WITHDRAWN	1/14/2016	1	1	7	.
WSH	3912	JAIL	KING	MISDEMEANOR	FAXED	1/14/2016	0	0	7	.
WSH	3913	JAIL	SNOHOMISH	FELONY	FAXED	1/14/2016	1	1	8	.
WSH	3914	JAIL	GRAYS HARBOR	MISDEMEANOR	FAXED	1/14/2016	0	0	12	.
WSH	3915	JAIL	WHATCOM	FELONY	FAXED	1/14/2016	0	0	12	.
WSH	3916	JAIL	KING	MISDEMEANOR	FAXED	1/14/2016	1	1	13	.
WSH	3917	JAIL	CLARK	FELONY	FAXED	1/14/2016	0	0	13	.
WSH	3918	INPATIENT	SKAGIT	FELONY CLASS C	BED OFFERED	1/14/2016	0	0	14	.
WSH	3919	INPATIENT	KING	MISDEMEANOR	BED OFFERED	1/14/2016	0	0	15	.
WSH	3920	JAIL	KING	MISDEMEANOR	FAXED	1/14/2016	1	1	15	.
WSH	3921	JAIL	THURSTON	MISDEMEANOR	INCOMPLETE	1/14/2016	0	0	.	17
WSH	3922	JAIL	CLARK	MISDEMEANOR	INCOMPLETE	1/14/2016	1	1	.	17
WSH	3923	INPATIENT	WHATCOM	FELONY CLASS B	INCOMPLETE	1/14/2016	12	12	.	17
WSH	3924	JAIL	KITSAP	MISDEMEANOR	INCOMPLETE	1/14/2016	0	0	.	17
WSH	3925	JAIL	KING	FELONY	FAXED	1/14/2016	0	0	.	17
WSH	3926	JAIL	WHATCOM	FELONY	INCOMPLETE	1/14/2016	1	1	.	17
WSH	3927	JAIL	KING	MISDEMEANOR	FAXED	1/15/2016	0	0	6	.

WSH	3928	JAIL	KING	MISDEMEANOR	FAXED	1/15/2016	0	0	6	.
WSH	3929	JAIL	SNOHOMISH	MISDEMEANOR	FAXED	1/15/2016	0	4	7	.
WSH	3930	JAIL	KING	MISDEMEANOR	FAXED	1/15/2016	0	0	13	.
WSH	3931	JAIL	THURSTON	MISDEMEANOR	INCOMPLETE	1/15/2016	0	0	.	16
WSH	3932	JAIL	KING	MISDEMEANOR	FAXED	1/16/2016	1	3	11	.
WSH	3933	JAIL	KING	MISDEMEANOR	FAXED	1/18/2016	0	1	11	.
WSH	3934	JAIL	PIERCE	MISDEMEANOR	FAXED	1/19/2016	0	0	3	.
WSH	3935	JAIL	PIERCE	MISDEMEANOR	FAXED	1/19/2016	0	0	3	.
WSH	3936	JAIL	CLARK	MISDEMEANOR	FAXED	1/19/2016	0	0	3	.
WSH	3937	JAIL	KING	MISDEMEANOR	WITHDRAWN	1/19/2016	1	1	7	.
WSH	3938	JAIL	KING	MISDEMEANOR	WITHDRAWN	1/19/2016	1	6	7	.
WSH	3939	JAIL	KING	MISDEMEANOR	WITHDRAWN	1/19/2016	1	6	7	.
WSH	3940	JAIL	MASON	FELONY	FAXED	1/19/2016	1	1	8	.
WSH	3941	JAIL	KING	MISDEMEANOR	FAXED	1/19/2016	1	1	10	.
WSH	3942	JAIL	PIERCE	FELONY	INCOMPLETE	1/19/2016	1	1	.	12
WSH	3943	INPATIENT	KING	FELONY CLASS B	INCOMPLETE	1/19/2016	0	0	.	12
WSH	3944	JAIL	KING	MISDEMEANOR	FAXED	1/20/2016	0	0	1	.
WSH	3945	JAIL	PIERCE	MISDEMEANOR	FAXED	1/20/2016	0	0	5	.
WSH	3946	JAIL	MASON	MISDEMEANOR	FAXED	1/20/2016	2	2	7	.
WSH	3947	JAIL	KING	MISDEMEANOR	FAXED	1/20/2016	0	1	9	.
WSH	3948	JAIL	PIERCE	MISDEMEANOR	INCOMPLETE	1/20/2016	0	0	.	11
WSH	3949	JAIL	KING	MISDEMEANOR	INCOMPLETE	1/20/2016	0	0	.	11
WSH	3950	JAIL	KING	MISDEMEANOR	INCOMPLETE	1/20/2016	0	0	.	11
WSH	3951	JAIL	KING	FELONY	INCOMPLETE	1/20/2016	0	0	.	11
WSH	3952	JAIL	KING	FELONY	INCOMPLETE	1/20/2016	0	0	.	11
WSH	3953	JAIL	KING	MISDEMEANOR	FAXED	1/21/2016	0	0	1	.
WSH	3954	JAIL	KING	MISDEMEANOR	FAXED	1/21/2016	0	0	5	.
WSH	3955	JAIL	PIERCE	MISDEMEANOR	FAXED	1/21/2016	0	0	7	.
WSH	3956	JAIL	KING	FELONY	INCOMPLETE	1/21/2016	0	0	.	10
WSH	3957	JAIL	KING	FELONY	INCOMPLETE	1/21/2016	0	0	.	10
WSH	3958	JAIL	KING	FELONY	INCOMPLETE	1/21/2016	0	0	.	10
WSH	3959	JAIL	KING	FELONY	INCOMPLETE	1/21/2016	1	1	.	10
WSH	3960	JAIL	KING	MISDEMEANOR	INCOMPLETE	1/21/2016	1	1	.	10
WSH	3961	JAIL	THURSTON	FELONY	INCOMPLETE	1/21/2016	0	0	.	10
WSH	3962	INPATIENT	KING	FELONY CLASS B	INCOMPLETE	1/21/2016	0	0	.	10

WSH	3963	JAIL	KITSAP	FELONY	FAXED	1/22/2016	0	0	4	.
WSH	3964	JAIL	MASON	MISDEMEANOR	FAXED	1/22/2016	0	0	5	.
WSH	3965	JAIL	SNOHOMISH	MISDEMEANOR	FAXED	1/22/2016	0	0	6	.
WSH	3966	JAIL	KING	MISDEMEANOR	INCOMPLETE	1/22/2016	0	0	.	9
WSH	3967	JAIL	KING	MISDEMEANOR	INCOMPLETE	1/22/2016	0	0	.	9
WSH	3968	JAIL	KING	FELONY	INCOMPLETE	1/22/2016	0	0	.	9
WSH	3969	JAIL	WHATCOM	MISDEMEANOR	INCOMPLETE	1/22/2016	5	5	.	9
WSH	3970	JAIL	KING	MISDEMEANOR	INCOMPLETE	1/22/2016	0	0	.	9
WSH	3971	JAIL	KING	MISDEMEANOR	INCOMPLETE	1/22/2016	0	0	.	9
WSH	3972	JAIL	PIERCE	MISDEMEANOR	INCOMPLETE	1/22/2016	0	0	.	9
WSH	3973	JAIL	KING	MISDEMEANOR	INCOMPLETE	1/22/2016	0	0	.	9
WSH	3974	JAIL	THURSTON	MISDEMEANOR	INCOMPLETE	1/22/2016	0	0	.	9
WSH	3975	JAIL	THURSTON	MISDEMEANOR	INCOMPLETE	1/22/2016	4	4	.	9
WSH	3976	JAIL	CLARK	MISDEMEANOR	FAXED	1/25/2016	0	0	2	.
WSH	3977	JAIL	THURSTON	MISDEMEANOR	INCOMPLETE	1/25/2016	1	1	.	6
WSH	3978	JAIL	KING	FELONY	INCOMPLETE	1/25/2016	0	0	.	6
WSH	3979	JAIL	KING	MISDEMEANOR	INCOMPLETE	1/25/2016	1	1	.	6
WSH	3980	JAIL	KING	MISDEMEANOR	INCOMPLETE	1/25/2016	0	0	.	6
WSH	3981	JAIL	KING	MISDEMEANOR	INCOMPLETE	1/25/2016	1	1	.	6
WSH	3982	JAIL	KING	MISDEMEANOR	INCOMPLETE	1/25/2016	0	0	.	6
WSH	3983	JAIL	KING	MISDEMEANOR	INCOMPLETE	1/25/2016	0	1	.	6
WSH	3984	JAIL	KING	MISDEMEANOR	WITHDRAWN	1/25/2016	0	0	.	6
WSH	3985	JAIL	SNOHOMISH	MISDEMEANOR	INCOMPLETE	1/26/2016	3	3	.	5
WSH	3986	JAIL	CLARK	MISDEMEANOR	INCOMPLETE	1/26/2016	0	0	.	5
WSH	3987	JAIL	KING	FELONY	INCOMPLETE	1/26/2016	0	0	.	5
WSH	3988	JAIL	THURSTON	MISDEMEANOR	INCOMPLETE	1/26/2016	1	1	.	5
WSH	3989	JAIL	MASON	MISDEMEANOR	INCOMPLETE	1/27/2016	0	0	.	4
WSH	3990	JAIL	KING	FELONY	INCOMPLETE	1/27/2016	0	0	.	4
WSH	3991	JAIL	MASON	MISDEMEANOR	INCOMPLETE	1/27/2016	0	0	.	4
WSH	3992	INPATIENT	KING	FELONY CLASS A	INCOMPLETE	1/27/2016	0	0	.	4
WSH	3993	INPATIENT	KING	MISDEMEANOR	INCOMPLETE	1/27/2016	1	1	.	4
WSH	3994	JAIL	KITSAP	MISDEMEANOR	INCOMPLETE	1/27/2016	0	0	.	4
WSH	3995	JAIL	SNOHOMISH	FELONY	INCOMPLETE	1/27/2016	0	0	.	4
WSH	3996	JAIL	GRAYS HARBOR	MISDEMEANOR	INCOMPLETE	1/27/2016	0	0	.	4
WSH	3997	JAIL	KING	MISDEMEANOR	INCOMPLETE	1/27/2016	0	0	.	4

WSH	3998	JAIL	KING	FELONY	INCOMPLETE	1/28/2016	0	0	.	3
WSH	3999	JAIL	KING	FELONY	INCOMPLETE	1/28/2016	0	0	.	3
WSH	4000	JAIL	KING	MISDEMEANOR	INCOMPLETE	1/28/2016	0	0	.	3
WSH	4001	JAIL	CLARK	MISDEMEANOR	INCOMPLETE	1/28/2016	0	0	.	3
WSH	4002	JAIL	KITSAP	FELONY	INCOMPLETE	1/28/2016	0	0	.	3
WSH	4003	JAIL	KING	MISDEMEANOR	INCOMPLETE	1/28/2016	0	0	.	3
WSH	4004	JAIL	MASON	MISDEMEANOR	INCOMPLETE	1/28/2016	0	0	.	3
WSH	4005	JAIL	KING	MISDEMEANOR	INCOMPLETE	1/28/2016	0	0	.	3
WSH	4006	JAIL	CLARK	FELONY	INCOMPLETE	1/29/2016	0	0	.	2
WSH	4007	JAIL	KING	MISDEMEANOR	INCOMPLETE	1/29/2016	0	0	.	2
WSH	4008	JAIL	CLARK	MISDEMEANOR	INCOMPLETE	1/29/2016	0	0	.	2
WSH	4009	JAIL	CLALLAM	MISDEMEANOR	INCOMPLETE	1/29/2016	0	0	.	2
WSH	4010	JAIL	SNOHOMISH	FELONY	INCOMPLETE	1/29/2016	0	0	.	2
WSH	4011	JAIL	CLARK	FELONY	INCOMPLETE	1/29/2016	0	0	.	2
WSH	4012	JAIL	CLARK	MISDEMEANOR	INCOMPLETE	1/29/2016	0	0	.	2
ESH	2566	JAIL	OKANOGAN	FELONY	FAX	9/21/2015	7	7	108	.
ESH	2578	JAIL	OKANOGAN	FELONY	FAX	9/24/2015	1	.	102	.
ESH	2909	JAIL	YAKIMA	FELONY	FAX	10/13/2015	0	0	94	.
ESH	2915	JAIL	ASOTIN	FELONY	FAX	10/20/2015	0	0	83	.
ESH	2921	JAIL	BENTON	FELONY	FAX	10/15/2015	0	5	92	.
ESH	3254	JAIL	GRANT	FELONY	FAX	11/9/2015	0	0	59	.
ESH	3263	JAIL	YAKIMA	MISDEMEANOR	FAX	11/17/2015	2	2	50	.
ESH	3268	JAIL	SPOKANE	MISDEMEANOR	FAX	11/23/2015	0	0	50	.
ESH	3380	JAIL	BENTON	MISDEMEANOR	FAX	10/21/2015	0	0	86	.
ESH	3383	JAIL	SPOKANE	FELONY	FAX	11/2/2015	56	56	73	.
ESH	3384	JAIL	YAKIMA	MISDEMEANOR	FAX	11/9/2015	0	50	71	.
ESH	3388	JAIL	SPOKANE	FELONY	FAX	11/30/2015	4	9	44	.
ESH	3389	JAIL	OKANOGAN	FELONY	FAX	11/30/2015	1	30	50	.
ESH	3640	JAIL	BENTON	FELONY	FAX	12/1/2015	0	1	.	61
ESH	3641	JAIL	BENTON	FELONY	FAX	12/1/2015	0	1	.	61
ESH	3642	JAIL	SPOKANE	FELONY	FAX	12/1/2015	3	6	42	.
ESH	3645	JAIL	SPOKANE	MISDEMEANOR	FAX	12/2/2015	0	0	36	.
ESH	3650	JAIL	PEND OREILLE	FELONY	FAX	12/4/2015	0	0	54	.
ESH	3652	JAIL	YAKIMA	FELONY	FAX	12/4/2015	3	4	42	.
ESH	3654	JAIL	SPOKANE	FELONY	FAX	12/7/2015	8	8	45	.

ESH	3655	INPATIENT	CHELAN	MISDEMEANOR	ADMISSION	12/8/2015	1	2	31	.
ESH	3657	JAIL	SPOKANE	FELONY	FAX	12/8/2015	1	1	38	.
ESH	3660	JAIL	SPOKANE	FELONY	FAX	12/9/2015	2	2	41	.
ESH	3663	JAIL	SPOKANE	FELONY	FAX	12/10/2015	0	0	40	.
ESH	3665	JAIL	SPOKANE	FELONY	FAX	12/11/2015	3	3	39	.
ESH	3666	JAIL	YAKIMA	FELONY	FAX	12/11/2015	4	4	41	.
ESH	3667	JAIL	BENTON	MISDEMEANOR	FAX	12/15/2015	2	2	24	.
ESH	3668	JAIL	BENTON	FELONY	FAX	12/16/2015	2	2	21	.
ESH	3668	JAIL	BENTON	MISDEMEANOR	FAX	12/16/2015	1	1	21	.
ESH	3671	JAIL	FRANKLIN	MISDEMEANOR	FAX	12/16/2015	0	.	22	.
ESH	3672	INPATIENT	YAKIMA	FELONY	ADMISSION	12/17/2015	0	13	.	45
ESH	3673	JAIL	BENTON	MISDEMEANOR	FAX	12/17/2015	0	.	21	.
ESH	3674	JAIL	SPOKANE	FELONY	FAX	12/17/2015	1	1	28	.
ESH	3675	JAIL	SPOKANE	FELONY	FAX	12/17/2015	0	1	27	.
ESH	3676	JAIL	SPOKANE	FELONY	FAX	12/21/2015	10	10	31	.
ESH	3677	INPATIENT	FRANKLIN	FELONY	ADMISSION	12/22/2015	1	1	.	40
ESH	3678	INPATIENT	GRANT	FELONY	ADMISSION	12/22/2015	1	23	.	40
ESH	3681	JAIL	KITTITAS	FELONY	FAX	12/22/2015	0	2	21	.
ESH	3682	JAIL	SPOKANE	FELONY	FAX	12/22/2015	1	1	15	.
ESH	3684	INPATIENT	YAKIMA	FELONY	ADMISSION	12/24/2015	4	4	.	38
ESH	3686	INPATIENT	FRANKLIN	FELONY	ADMISSION	12/28/2015	2	2	.	34
ESH	3687	JAIL	CHELAN	FELONY	FAX	12/28/2015	1	.	29	.
ESH	3688	JAIL	FRANKLIN	MISDEMEANOR	FAX	12/28/2015	0	0	18	.
ESH	3689	JAIL	GRANT	FELONY	FAX	12/28/2015	2	2	22	.
ESH	3690	JAIL	YAKIMA	FELONY	FAX	12/28/2015	1	11	23	.
ESH	3691	JAIL	YAKIMA	FELONY	FAX	12/28/2015	1	11	.	34
ESH	3692	JAIL	GRANT	FELONY	FAX	12/29/2015	2	2	8	.
ESH	3693	JAIL	YAKIMA	FELONY	FAX	12/29/2015	0	1	21	.
ESH	3694	INPATIENT	YAKIMA	FELONY	ADMISSION	12/30/2015	1	1	.	32
ESH	3695	INPATIENT	SPOKANE	FELONY	ADMISSION	12/31/2015	0	5	.	31
ESH	3799	INPATIENT	CHELAN	FELONY	ADMISSION	11/30/2015	2	.	39	.
ESH	3801	JAIL	SPOKANE	MISDEMEANOR	FAX	12/11/2015	0	0	34	.
ESH	4013	JAIL	SPOKANE	FELONY	FAX	1/13/2016	0	0	.	18
ESH	4014	JAIL	YAKIMA	FELONY	FAX	1/26/2016	0	.	.	5
ESH	4015	JAIL	FRANKLIN	MISDEMEANOR	FAX	1/25/2016	0	0	.	6



ESH	4016	JAIL	STEVENS	FELONY	FAX	1/20/2016	0	0	.	11
ESH	4017	JAIL	GRANT	FELONY	FAX	1/19/2016	2	2	.	12
ESH	4018	INPATIENT	SPOKANE	FELONY	ADMISSION	10/15/2015	103	103	.	108
ESH	4019	JAIL	GRANT	FELONY	FAX	1/22/2016	6	6	.	9
ESH	4020	JAIL	SPOKANE	MISDEMEANOR	FAX	1/28/2016	0	0	.	3
ESH	4021	JAIL	GRANT	FELONY	FAX	1/24/2016	2	2	5	.
ESH	4022	INPATIENT	YAKIMA	FELONY	ADMISSION	11/5/2015	1	29	68	.
ESH	4023	JAIL	SPOKANE	MISDEMEANOR	FAX	1/6/2016	0	0	8	.
ESH	4024	JAIL	SPOKANE	FELONY	FAX	1/12/2016	0	.	7	.
ESH	4025	JAIL	BENTON	FELONY	FAX	1/21/2016	1	1	8	.
ESH	4026	INPATIENT	YAKIMA	FELONY	ADMISSION	11/12/2015	4	8	76	.
ESH	4027	JAIL	SPOKANE	FELONY	FAX	1/15/2016	0	0	10	.
ESH	4028	JAIL	FRANKLIN	MISDEMEANOR	FAX	1/11/2016	0	1	11	.
ESH	4029	JAIL	BENTON	FELONY	FAX	11/19/2015	1	4	.	73
ESH	4030	JAIL	SPOKANE	MISDEMEANOR	FAX	1/13/2016	0	0	12	.
ESH	4031	JAIL	GRANT	FELONY	FAX	1/5/2016	0	3	14	.
ESH	4032	JAIL	BENTON	FELONY	FAX	1/13/2016	0	.	14	.
ESH	4033	JAIL	SPOKANE	MISDEMEANOR	FAX	1/11/2016	1	1	14	.
ESH	4034	JAIL	BENTON	FELONY	FAX	1/14/2016	1	1	14	.
ESH	4035	INPATIENT	YAKIMA	FELONY	ADMISSION	12/2/2015	0	0	56	.
ESH	4036	INPATIENT	CHELAN	FELONY	ADMISSION	12/7/2015	1	1	46	.
ESH	4037	INPATIENT	SPOKANE	FELONY	ADMISSION	12/10/2015	1	1	46	.
ESH	4038	JAIL	FRANKLIN	FELONY	FAX	11/10/2015	56	.	78	.
ESH	4039	INPATIENT	YAKIMA	MISDEMEANOR	ADMISSION	1/6/2016	0	5	.	25
ESH	4040	JAIL	YAKIMA	MISDEMEANOR	FAX	1/21/2016	1	.	.	10
ESH	4041	JAIL	BENTON	FELONY	FAX	1/7/2016	0	0	.	24
ESH	4042	JAIL	BENTON	FELONY	FAX	1/8/2016	0	0	.	23
ESH	4043	JAIL	YAKIMA	MISDEMEANOR	FAX	1/22/2016	0	.	.	9
ESH	4044	JAIL	CHELAN	FELONY	FAX	1/21/2016	4	4	.	10
ESH	4045	JAIL	CHELAN	MISDEMEANOR	FAX	1/27/2016	0	.	.	4
ESH	4046	JAIL	FRANKLIN	FELONY	FAX	1/25/2016	0	0	.	6
ESH	4047	JAIL	SPOKANE	MISDEMEANOR	FAX	1/26/2016	2	2	.	5
ESH	4048	JAIL	BENTON	FELONY	FAX	1/7/2016	0	0	6	.
ESH	4049	JAIL	CHELAN	MISDEMEANOR	FAX	1/11/2016	0	0	4	.
ESH	4050	JAIL	CHELAN	MISDEMEANOR	FAX	1/26/2016	1	1	3	.

ESH	4051	JAIL	ASOTIN	MISDEMEANOR	FAX	1/13/2016	14	14	.	18
ESH	4052	INPATIENT	YAKIMA	MISDEMEANOR	ADMISSION	1/13/2016	0	2	.	18
ESH	4053	JAIL	BENTON	MISDEMEANOR	FAX	1/13/2016	0	.	8	.
ESH	4054	JAIL	SPOKANE	FELONY	FAX	1/15/2016	0	0	7	.
ESH	4055	JAIL	BENTON	FELONY	FAX	1/22/2016	0	0	6	.
ESH	4056	JAIL	SPOKANE	FELONY	FAX	1/6/2016	0	0	9	.
ESH	4057	JAIL	FRANKLIN	MISDEMEANOR	FAX	1/15/2016	0	0	10	.
ESH	4058	JAIL	BENTON	FELONY	FAX	1/14/2016	1	1	13	.
ESH	4059	INPATIENT	BENTON	FELONY	ADMISSION	1/19/2016	0	0	.	12
ESH	4060	JAIL	YAKIMA	MISDEMEANOR	FAX	1/12/2016	0	1	14	.
ESH	4061	JAIL	BENTON	MISDEMEANOR	FAX	1/20/2016	0	0	.	11
ESH	4062	JAIL	BENTON	MISDEMEANOR	FAX	1/21/2016	0	0	8	.
ESH	4063	JAIL	SPOKANE	FELONY	FAX	11/16/2015	66	66	72	.
ESH	4064	JAIL	OKANOGAN	FELONY	FAX	1/22/2016	0	0	6	.
ESH	4065	JAIL	FRANKLIN	FELONY	FAX	9/8/2015	118	118	141	.
ESH	4066	JAIL	YAKIMA	MISDEMEANOR	FAX	1/28/2016	5	5	.	3
ESH	4067	JAIL	PEND OREILLE	MISDEMEANOR	FAX	1/20/2016	1	1	.	11
ESH	4068	JAIL	SPOKANE	FELONY	FAX	1/22/2016	0	0	.	9
ESH	4069	INPATIENT	BENTON	FELONY	ADMISSION	1/27/2016	0	1	.	4
ESH	4070	INPATIENT	BENTON	MISDEMEANOR	ADMISSION	1/27/2016	0	0	.	4
ESH	4071	JAIL	SPOKANE	FELONY	FAX	1/29/2016	0	0	.	2

**Appendix D: Class Member--Restoration Information for January 2016**

Hospital	Class Member	County	Offense	Completion Method or Incomplete	Order Signed Date	Number of days from signed order to:			
						Order Received	Discovery Received	Complete	Incomplete: End of Reporting Period
WSH	2616	KITSAP	FELONY CLASS C	INCOMPLETE	9/16/2015	0	0	.	137
WSH	2942	SNOHOMISH	MISDEMEANOR	INCOMPLETE	9/21/2015	24	24	.	132
WSH	3000	KING	MISDEMEANOR	INCOMPLETE	10/23/2015	0	0	.	100
WSH	3003	KING	FELONY CLASS C	INCOMPLETE	10/26/2015	1	1	.	97
WSH	3287	KING	FELONY CLASS A	BED OFFERED	11/4/2015	0	0	61	
WSH	3288	KING	FELONY CLASS B	INCOMPLETE	11/4/2015	0	0	.	88
WSH	3291	PIERCE	FELONY CLASS A	BED OFFERED	11/4/2015	2	2	62	.
WSH	3301	KING	FELONY CLASS B	BED OFFERED	11/9/2015	3	3	56	.
WSH	3307	PIERCE	FELONY CLASS C	BED OFFERED	11/16/2015	1	1	50	.
WSH	3309	CLARK	FELONY CLASS C	BED OFFERED	11/17/2015	0	0	48	.
WSH	3311	KING	FELONY CLASS B	INCOMPLETE	11/17/2015	0	0	.	75
WSH	3312	SNOHOMISH	FELONY CLASS C	BED OFFERED	11/17/2015	0	0	49	.
WSH	3313	CLARK	FELONY CLASS C	BED OFFERED	11/18/2015	1	1	47	.
WSH	3315	SNOHOMISH	FELONY CLASS B	BED OFFERED	11/18/2015	1	1	48	.
WSH	3316	KING	FELONY CLASS A	BED OFFERED	11/19/2015	1	1	55	.
WSH	3317	KING	FELONY CLASS B	BED OFFERED	11/19/2015	0	0	67	.
WSH	3318	SNOHOMISH	FELONY CLASS C	BED OFFERED	11/19/2015	0	0	53	.
WSH	3319	PIERCE	FELONY CLASS B	BED OFFERED	11/20/2015	0	0	54	.
WSH	3321	GRAYS HARBOR	FELONY CLASS C	BED OFFERED	11/23/2015	1	1	53	.
WSH	3322	PIERCE	FELONY CLASS A	BED OFFERED	11/23/2015	0	0	58	.
WSH	3392	PIERCE	FELONY	BED OFFERED	11/18/2015	1	1	55	.
WSH	3393	PIERCE	FELONY CLASS C	BED OFFERED	11/18/2015	1	1	50	.
WSH	3394	PIERCE	FELONY CLASS C	BED OFFERED	11/19/2015	4	20	53	.
WSH	3395	CLARK	FELONY CLASS C	BED OFFERED	11/20/2015	3	3	49	.

WSH	3396	SNOHOMISH	FELONY CLASS A	BED OFFERED	11/23/2015	0	0	53	.
WSH	3398	PIERCE	FELONY CLASS B	BED OFFERED	11/24/2015	1	1	52	.
WSH	3402	KING	FELONY CLASS B	BED OFFERED	11/25/2015	0	0	55	.
WSH	3405	THURSTON	FELONY CLASS C	BED OFFERED	11/30/2015	0	0	46	.
WSH	3713	CLARK	FELONY CLASS C	BED OFFERED	12/2/2015	6	6	49	.
WSH	3715	PIERCE	FELONY CLASS B	BED OFFERED	12/2/2015	1	1	50	.
WSH	3716	PIERCE	FELONY CLASS B	BED OFFERED	12/2/2015	1	1	50	.
WSH	3718	PIERCE	FELONY CLASS C	BED OFFERED	12/2/2015	1	1	49	.
WSH	3719	PIERCE	FELONY CLASS C	BED OFFERED	12/2/2015	6	7	51	.
WSH	3725	KING	FELONY CLASS B	BED OFFERED	12/7/2015	0	0	45	.
WSH	3726	KING	FELONY CLASS C	BED OFFERED	12/7/2015	0	0	44	.
WSH	3731	PIERCE	FELONY CLASS C	BED OFFERED	12/9/2015	9	13	42	.
WSH	3732	CLARK	FELONY CLASS C	BED OFFERED	12/10/2015	1	1	46	.
WSH	3736	CLARK	FELONY CLASS B	BED OFFERED	12/11/2015	3	3	49	.
WSH	3737	THURSTON	MISDEMEANOR	BED OFFERED	12/11/2015	3	3	24	.
WSH	3738	KING	FELONY CLASS B	BED OFFERED	12/14/2015	0	0	43	.
WSH	3739	MASON	FELONY CLASS C	BED OFFERED	12/14/2015	0	0	42	.
WSH	3740	KING	FELONY CLASS C	BED OFFERED	12/15/2015	0	0	41	.
WSH	3741	KING	FELONY CLASS C	BED OFFERED	12/15/2015	1	1	42	.
WSH	3742	CLARK	FELONY CLASS C	BED OFFERED	12/16/2015	0	0	44	.
WSH	3743	KING	FELONY CLASS C	BED OFFERED	12/16/2015	0	0	42	.
WSH	3744	KING	MISDEMEANOR	BED OFFERED	12/16/2015	1	1	19	.
WSH	3745	KING	FELONY CLASS B	INCOMPLETE	12/22/2015	0	0	.	40
WSH	3748	KITSAP	FELONY CLASS C	BED OFFERED	12/22/2015	1	1	.	40
WSH	3750	SNOHOMISH	FELONY CLASS C	BED OFFERED	12/22/2015	1	1	.	40
WSH	3752	KING	FELONY CLASS C	BED OFFERED	12/23/2015	0	0	.	39
WSH	3755	KING	GROSS MISDEMEANOR	BED OFFERED	12/28/2015	0	0	11	.
WSH	3802	PIERCE	FELONY CLASS A	BED OFFERED	11/30/2015	0	0	50	.
WSH	3803	PIERCE	FELONY CLASS B	BED OFFERED	11/25/2015	6	6	50	.

WSH	3804	PIERCE	FELONY CLASS B	BED OFFERED	12/16/2015	1	1	.	46
WSH	3805	LEWIS	FELONY CLASS B	INCOMPLETE	12/17/2015	0	0	.	45
WSH	3806	SKAGIT	FELONY CLASS C	BED OFFERED	12/17/2015	1	1	.	45
WSH	3807	CLALLAM	MISDEMEANOR	BED OFFERED	12/17/2015	1	1	20	.
WSH	3808	PIERCE	FELONY CLASS A	INCOMPLETE	12/18/2015	0	0	.	44
WSH	3809	THURSTON	FELONY CLASS C	INCOMPLETE	12/21/2015	0	0	.	41
WSH	3810	SNOHOMISH	FELONY CLASS A	INCOMPLETE	12/21/2015	0	0	.	41
WSH	3811	WHATCOM	FELONY CLASS C	INCOMPLETE	12/23/2015	0	0	.	39
WSH	3812	KING	FELONY CLASS B	INCOMPLETE	12/23/2015	0	0	.	39
WSH	3814	SNOHOMISH	FELONY CLASS C	INCOMPLETE	12/23/2015	1	1	.	39
WSH	3815	PIERCE	FELONY CLASS C	BED OFFERED	12/23/2015	1	1	.	39
WSH	3816	CLARK	FELONY CLASS C	INCOMPLETE	12/23/2015	1	1	.	39
WSH	3817	PIERCE	FELONY CLASS A	INCOMPLETE	12/24/2015	0	0	.	38
WSH	3818	PIERCE	MISDEMEANOR	BED OFFERED	12/24/2015	4	4	14	.
WSH	3819	KING	FELONY CLASS B	INCOMPLETE	12/28/2015	0	0	.	34
WSH	3820	CLARK	FELONY CLASS C	INCOMPLETE	12/29/2015	1	1	.	33
WSH	3821	KING	MISDEMEANOR	BED OFFERED	12/30/2015	0	0	14	.
WSH	3822	PIERCE	FELONY CLASS B	INCOMPLETE	12/30/2015	1	1	.	32
WSH	3823	SNOHOMISH	FELONY CLASS B	INCOMPLETE	12/31/2015	0	0	.	31
WSH	3824	LEWIS	FELONY CLASS B	INCOMPLETE	12/31/2015	0	0	.	31
WSH	4072	KING	FELONY CLASS B	BED OFFERED	1/5/2016	1	1	3	.
WSH	4073	COWLITZ	FELONY CLASS A	INCOMPLETE	1/5/2016	0	0	.	26
WSH	4074	MASON	FELONY CLASS A	INCOMPLETE	1/5/2016	0	0	.	26
WSH	4075	PIERCE	FELONY CLASS C	BED OFFERED	1/6/2016	0	0	0	.
WSH	4076	PIERCE	FELONY CLASS C	BED OFFERED	1/6/2016	1	1	6	.
WSH	4077	PIERCE	MISDEMEANOR	CANCELLED	1/6/2016	1	1	7	.
WSH	4078	KING	FELONY CLASS C	INCOMPLETE	1/6/2016	0	0	.	25
WSH	4079	KITSAP	MISDEMEANOR	BED OFFERED	1/8/2016	3	3	6	.
WSH	4080	PIERCE	FELONY CLASS C	BED OFFERED	1/11/2016	1	1	3	.
WSH	4081	THURSTON	FELONY CLASS B	INCOMPLETE	1/11/2016	2	2	.	20

WSH	4082	THURSTON	FELONY CLASS C	INCOMPLETE	1/11/2016	1	1	.	20
WSH	4083	THURSTON	FELONY CLASS C	INCOMPLETE	1/11/2016	0	0	.	20
WSH	4084	KING	FELONY CLASS B	BED OFFERED	1/12/2016	1	1	7	.
WSH	4085	KING	FELONY CLASS B	INCOMPLETE	1/12/2016	1	1	.	19
WSH	4086	COWLITZ	FELONY CLASS C	INCOMPLETE	1/13/2016	1	1	.	18
WSH	4087	KING	MISDEMEANOR	INCOMPLETE	1/13/2016	1	1	.	18
WSH	4088	PIERCE	FELONY CLASS C	INCOMPLETE	1/13/2016	1	1	.	18
WSH	4089	PIERCE	FELONY CLASS C	INCOMPLETE	1/13/2016	1	1	.	18
WSH	4090	PIERCE	FELONY CLASS C	BED OFFERED	1/14/2016	0	0	0	.
WSH	4091	WHATCOM	FELONY CLASS C	INCOMPLETE	1/14/2016	0	0	.	17
WSH	4092	PIERCE	FELONY CLASS B	INCOMPLETE	1/14/2016	1	1	.	17
WSH	4093	CLARK	FELONY CLASS C	INCOMPLETE	1/14/2016	0	0	.	17
WSH	4094	KITSAP	FELONY CLASS C	INCOMPLETE	1/14/2016	1	1	.	17
WSH	4095	SNOHOMISH	MISDEMEANOR	INCOMPLETE	1/14/2016	0	0	.	17
WSH	4096	SNOHOMISH	FELONY CLASS B	INCOMPLETE	1/15/2016	0	0	.	16
WSH	4097	CLARK	FELONY CLASS C	INCOMPLETE	1/15/2016	4	4	.	16
WSH	4098	CLARK	FELONY CLASS A	BED OFFERED	1/19/2016	0	0	0	.
WSH	4099	MASON	FELONY CLASS C	CANCELLED	1/19/2016	0	0	0	.
WSH	4100	GRAYS HARBOR	FELONY CLASS C	BED OFFERED	1/19/2016	1	1	8	.
WSH	4101	KING	FELONY CLASS A	INCOMPLETE	1/19/2016	0	0	.	12
WSH	4102	PIERCE	MISDEMEANOR	BED OFFERED	1/19/2016	2	2	.	12
WSH	4103	PIERCE	FELONY CLASS C	INCOMPLETE	1/19/2016	2	2	.	12
WSH	4104	THURSTON	FELONY CLASS C	BED OFFERED	1/20/2016	0	0	0	.
WSH	4105	THURSTON	FELONY CLASS C	BED OFFERED	1/20/2016	0	0	0	.
WSH	4106	PIERCE	FELONY CLASS C	BED OFFERED	1/20/2016	0	0	9	.
WSH	4107	PIERCE	FELONY CLASS C	BED OFFERED	1/20/2016	0	0	9	.
WSH	4108	KING	MISDEMEANOR	BED OFFERED	1/20/2016	1	1	.	11
WSH	4109	KING	FELONY CLASS B	INCOMPLETE	1/20/2016	0	0	.	11
WSH	4110	KING	FELONY CLASS C	INCOMPLETE	1/20/2016	1	6	.	11
WSH	4111	WHATCOM	FELONY CLASS A	INCOMPLETE	1/21/2016	6	6	.	10

WSH	4112	KING	FELONY CLASS B	INCOMPLETE	1/21/2016	0	0	.	10
WSH	4113	PIERCE	FELONY CLASS C	INCOMPLETE	1/22/2016	0	0	.	9
WSH	4114	KING	FELONY CLASS C	INCOMPLETE	1/25/2016	0	0	.	6
WSH	4115	MASON	FELONY CLASS C	INCOMPLETE	1/25/2016	2	2	.	6
WSH	4116	KING	FELONY CLASS B	INCOMPLETE	1/25/2016	0	0	.	6
WSH	4117	PIERCE	FELONY CLASS C	BED OFFERED	1/26/2016	0	0	0	.
WSH	4118	KING	MISDEMEANOR	BED OFFERED	1/26/2016	0	0	.	5
WSH	4119	KING	FELONY CLASS C	INCOMPLETE	1/27/2016	0	0	.	4
WSH	4120	KING	FELONY CLASS C	INCOMPLETE	1/27/2016	0	0	.	4
WSH	4121	KING	FELONY CLASS A	INCOMPLETE	1/27/2016	0	0	.	4
WSH	4122	KING	FELONY CLASS C	BED OFFERED	1/28/2016	0	0	0	.
WSH	4123	KING	FELONY CLASS B	BED OFFERED	1/28/2016	0	0	.	3
WSH	4124	WHATCOM	FELONY CLASS B	INCOMPLETE	1/28/2016	1	1	.	3
WSH	4125	MASON	FELONY CLASS B	INCOMPLETE	1/28/2016	1	1	.	3
WSH	4126	PIERCE	FELONY CLASS B	BED OFFERED	1/29/2016	0	0	0	.
ESH	3021	SPOKANE	FELONY	ADMISSION	10/8/2015	0	0	88	.
ESH	3025	BENTON	FELONY	ADMISSION	10/21/2015	0	0	77	.
ESH	3326	YAKIMA	FELONY	ADMISSION	11/2/2015	2	2	79	.
ESH	3328	SPOKANE	FELONY	ADMISSION	11/5/2015	0	0	60	.
ESH	3330	GRANT	FELONY	ADMISSION	11/17/2015	0	0	58	.
ESH	3331	STEVENS	FELONY	ADMISSION	11/17/2015	0	0	49	.
ESH	3332	SPOKANE	FELONY	ADMISSION	11/20/2015	0	0	66	.
ESH	3347	CHELAN	MISDEMEANOR	ADMISSION	11/23/2015	9	9	46	.
ESH	3768	YAKIMA	FELONY	ADMISSION	12/18/2015	0	0	.	44
ESH	3769	CHELAN	MISDEMEANOR	ADMISSION	12/22/2015	0	0	.	40
ESH	4127	BENTON	FELONY	ADMISSION	11/5/2015	0	0	62	.
ESH	4128	SPOKANE	FELONY	ADMISSION	11/19/2015	0	0	57	.
ESH	4129	CHELAN	FELONY	ADMISSION	12/7/2015	1	1	51	.
ESH	4130	STEVENS	FELONY	ADMISSION	12/15/2015	0	0	44	.
ESH	4131	GRANT	FELONY	ADMISSION	1/8/2016	3	3	.	23

ESH	4132	GRANT	FELONY	ADMISSION	1/12/2016	0	0	.	19
ESH	4133	FRANKLIN	FELONY	ADMISSION	1/15/2016	6	6	.	16
ESH	4134	OKANOGAN	FELONY	ADMISSION	1/20/2016	0	0	.	11
ESH	4135	BENTON	FELONY	ADMISSION	1/21/2016	0	1	.	10
ESH	4136	BENTON	FELONY	ADMISSION	1/21/2016	0	0	.	10
ESH	4137	SPOKANE	FELONY	ADMISSION	1/22/2016	0	0	.	9
ESH	4138	SPOKANE	FELONY	ADMISSION	1/26/2016	0	0	.	5
ESH	4139	CHELAN	FELONY	ADMISSION	1/27/2016	1	1	.	4
ESH	4140	BENTON	FELONY	ADMISSION	1/28/2016	1	1	.	3