

***Cassie Cordell Trueblood, et al., v. Washington State Department
of Social and Health Services, et al.***
Case No. C14-1178 MJP
Final Monthly Report to the Court Appointed Monitor

May 15, 2016

Behavioral Health Administration
Division of State Hospitals
PO Box 45050
Olympia, WA 98504-5050
(360) 725-2260
Fax: (360) 407-0304



TABLE OF CONTENTS

Background.....	Page 3
Class Member Status Information.....	Page 5
Class Member Status Data Tables.....	Page 8
Class Member Status Data Graphs.....	Page 11
Resources Required to Provide Timely Competency Services.....	Page 14
Key Accomplishments—March 2016.....	Page 15
<i>Trueblood</i> Implementation Steps Taken and Planned: March 2016.....	Page 17
Appendix A: Class Member—Evaluation Information for February 2016.....	Page 35
Appendix B: Class Member—Restoration Information for February 2016.....	Page 50
Appendix C: Class Member—Evaluation Information for March 2016.....	Page 57
Appendix D: Class Member—Restoration Information for March 2016.....	Page 69
Appendix E: Class Member—Restoration Information for March 2016 – MAPLE LANE.....	Page 76
Appendix F: Class Member—Restoration Information for March 2016 – YAKIMA.....	Page 76

Background

On April 2, 2015, the Court ordered the Department of Social and Health Services (DSHS) to file monthly reports with the *Trueblood* Court Monitor on efforts to comply with Court orders to provide timely competency evaluation and restoration services to Class Members:

“Defendants shall file a report with the Monitor on the fifth day of every month, which shall include:

- (1) the number of days between when a court ordered provision of competency services and when provision was completed, for each person ordered to receive competency services during the previous month;*
- (2) data regarding the number of evaluators, bed capacity, physicians, and other resources needed to provide timely competency services;*
- (3) the steps taken in the previous month to implement this order;*
- (4) when and what results are intended to be realized by each of these steps;*
- (5) the results realized in the previous month;*
- (6) the steps planned to be taken in the following month;*
- (7) certification by Defendants that they are fully compliant with all deadlines that became due in the previous month;*
- (8) Defendants’ estimate for when the wait times will reach seven days or less, and all data relied on in making that estimate; and*
- (9) any other information the Monitor informs Defendants is necessary for the Monitor to fully review Defendants’ actions and advise the Court.”*

This order was modified on February 8, 2016. Reporting on the remaining requirements of the February 8 order Care below, and do not include items previously reported as complete. As of April 2016, the period covered by this report, we are in compliance with each of the requirements of the February 8 order.

3. Implement a triage system to sort class members waiting for in-hospital evaluations by the acuity of their mental illnesses and their current manifestations, by the seriousness of their crimes, and by the amount of resources their cases require, by:			
Requirements	Date	Status	Progress Notes
C. Reporting on the implementation and effectiveness of the triage plan in Defendants’ monthly reports to the Court Monitor	Beginning April 15, 2016, ongoing	Ongoing	The department has received three additional referrals for triage since the last report, which makes a total of four. All were determined to be appropriate for triage and individuals were offered a restoration bed. As of 5/26/16 there were a total of six referrals from the following counties: Thurston (3), Snohomish (2); Island (1).

4. Implement a triage system to sort class members waiting for restoration services by the acuity of their mental illnesses and their current manifestations, by the seriousness of their crimes, and by the amount of resources their cases require, by:

C. Reporting on the implementation and effectiveness of the triage plan in Defendants' monthly reports to the Court Monitor	Beginning April 15, 2016, ongoing	Ongoing	We are in the process of establishing measures of effectiveness for the triage process. Measures under consideration for reporting include: result of the triage (accepted or rejected); of those accepted, the time between the anticipated admission date and the actual admission date.
---	-----------------------------------	---------	--

5. Report on the implementation status of the CMS Plan of Correction by:

B. Reporting on the implementation status in Defendants' monthly reports to the Court Monitor	Beginning March 15, 2016, ongoing	Ongoing	DSHS received a letter from CMS on April 28, 2016 that extends the termination date to June 3, 2016 in order to enter into a Systems Improvement Agreement (SIA) that will safeguard patients and drive WSH toward substantial compliance. The Department will negotiate an SIA with CMS that will provide additional time and oversight to ensure we are able to make sustainable, systemic changes that result in safe, quality care that meets CMS' full Medicare Conditions of Participation for Psychiatric hospitals. The length of this agreement remains to be negotiated but may be anticipated to last anywhere from six to eighteen months. The Department does not anticipate expansion of bed capacity at WSH to be implemented during this period of time.
---	-----------------------------------	---------	--

6. Plan for recruiting and staffing 30 beds at WSH after compliance with CMS's terms of participation is achieved in March by:

C. Reporting on the implementation status of the plan and timeframe in Defendants' monthly reports to the Court Monitor	Beginning April 15, 2016, ongoing	Ongoing	No action planned until January 2017.
8. Remove barriers to the expenditure of the \$4.8 million in currently allocated diversion funds by:			
D. Executing contracts for implementation by the selected providers	April 15, 2016	Pending final review with contractors	Contract negotiations took place the week of March 14, 2016 in order to distribute current FY2016 funds. Contracts were sent to contractors on April 21, 2016. DSHS anticipates fully executed contracts back from contractors by May 20, 2016.
10. Develop a reliable and valid client-level data system to support better management and accountability of the forensic services system by:			
E. Implementing revisions to the existing system or initiating development of a new forensic data and management information system	May 27, 2016	Pending	Pending.

The following report is submitted this 15th day of May, 2016 and covers the events of April 2016.

Class Member Status Information

This report provides the class member data for Competency Services displayed in two periods— March 1, 2016-March 31, 2016 and April 1, 2016-April 30, 2016. The March data are considered “mature” and the April data is a first look data set. April 2015 is the baseline month for data analysis.

The data are organized first into tables and graphs that show the trends forming over time.

Specific class member information is included in the following appendices to this report:

- Appendix A: Class Member—Evaluation Information for March 2016
- Appendix B: Class Member—Restoration Information for March 2016
- Appendix C: Class Member—Evaluation Information for April 2016
- Appendix D: Class Member—Restoration Information for April 2016
- Appendix E: Class Member—Restoration Information for April 2016 – Maple Lane
- Appendix F: Class Member—Restoration Information for April 2016 – Yakima

Analysis of Data: April 1, 2015 through March 31, 2016

The average monthly referrals for each type of service over the one-year period are as follows:

- Average monthly jail-based evaluation orders signed for April 2015-April 2016
 - WSH: 197.5
 - ESH: 41.2
 - Total: 238.8
- Average monthly inpatient evaluation orders signed for April 2015-April 2016
 - WSH: 14.2
 - ESH: 5.3
 - Total: 19.5
- Average monthly restoration orders signed for April 2015-April 2016
 - WSH: 65.2
 - ESH: 10.2
 - Total: 75.5

The number of orders in general is remaining steady.

- Jail-based evaluation orders for WSH was at 195 which is near the 197.5 average. ESH is holding steady with 38 compared with an average of 41.2. Combined, the hospitals totaled 233 compared with a 238.8 average.
- In-patient evaluation orders were variable in April. They rose for WSH at 19 compared with a 14.2 average. They fell for ESH at 3 compared with an average of 5.3. The combined count was 22 which is not to far from the 19.5 average.
- Restoration orders held steady for both facilities. WSH came in at 63 versus a 65.2 average. ESH had 11 orders compared with a 10.2 average, and combined 74 orders neared the 75.5 average.
- The total number of WSH restoration orders is approximately six times that of ESH, whereas WSH evaluations (jail based and inpatient) is approximately five times that of ESH. The Office is intending to develop a statewide system to monitor frequency of orders for evaluation and restoration in tandem with the new forensic data management information system. Quality Manager, Bryan Zolnikov is leading this effort.
- For jail-based evaluations, overall timeliness remained similar in April. Combined, 48% of jail-based evaluations were completed within 7 days of the court order, as reflected in a monthly median time of 8 days.
- For restorations, the combined hospital average was 35.5 days. This month, an additional 7 beds opened at ESH for a total of 27 new forensic beds; 10 patients had been admitted to the Yakima residential treatment facility (with two restored, the patient population is 8); and 5 to Maple Lane. Along with the 15 new beds at WSH, it appears that these increases are having some impact. However, we continue to anticipate that greater reductions will rely on filling the new RTFs.

Outlier cases in which defendants waited more than 100 days

There are no class members to report waiting more than 100 days. Below are some examples of class members waiting longer than the average for evaluation and restoration.

Five patients waited more than 20 days for their evaluation. These cases include:

1. WSH – #5030 shows waiting 29 days. Order received 4/1/16, evaluator assigned 4/5/16.
2. WSH – # 5042 shows waiting 26 days. Order received 4/4/16, evaluator assigned 4/11/16.
3. ESH - #4827 shows waiting 45 days. This patient was switched from an inpatient evaluation to a jail evaluation and is no longer waiting.
4. ESH - #4978 shows waiting 59 days. This patient was found not competent based on an earlier evaluation and is now waiting for restoration.

5. ESH - #4990 shows waiting for 33 days. The original court order for this patient was dated 3/28/16. It was not received by the hospital for 16 days. A new court order was requested on 4/14, and the evaluation was completed on 4/25. The system shows waiting for 33 days, but once the order was received, the evaluation was completed in 11 days.

Nine patients waited more than 40 days for restoration. These cases include:

1. WSH – 4907 shows waited 55 days. Bed offered 5/10/16.
2. WSH - 4908 shows still waiting at 45 days.
3. WSH – 4912 shows waited 54 days. Bed offered 5/10/16.
4. WSH – 4913 shows still waiting at 44 days.
5. WSH - 4914 shows waited 47 days. Bed offered on 5/3/16.
6. WSH - 4915 shows waited 44 days. Scheduled for a bed on 5/12/16.
7. WSH - 4918 shows waited 45 days. Bed offered 5/2/16.
8. WSH - 4920 shows waited 51 days. Bed offered 5/11/16.

Class Member Status Data Tables (April data are “First Look” and subject to change)

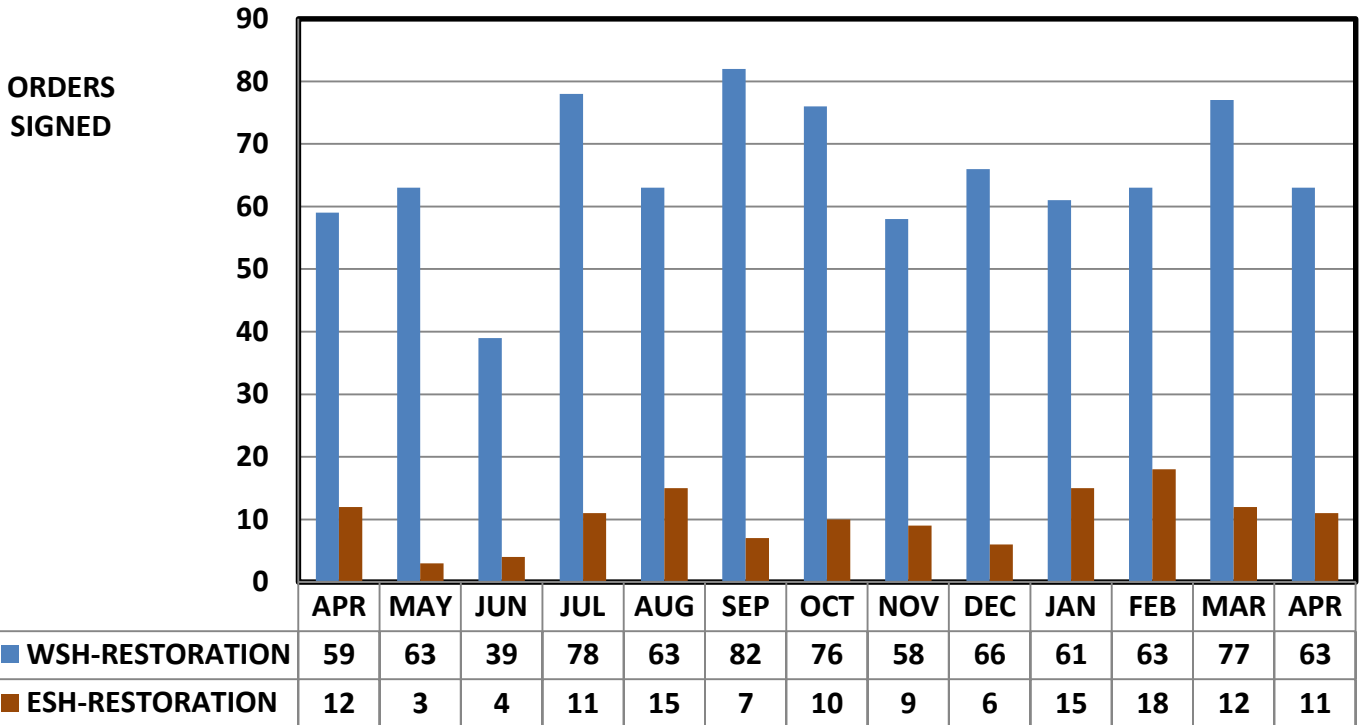
WESTERN STATE HOSPITAL		Court Orders Signed	Days from order signature to:								Percent complete within 7 days of order
			hospital receipt of order		hospital receipt of discovery		end of reporting month for incomplete referrals		completion		
			Average	Median	Average	Median	Average	Median	Average	Median	
Jail-based Evaluation	APR.	176	1.3	0.0	1.9	1.0	9.5	6.0	14.6	14.0	14%
	MAY	183	1.3	0.0	1.6	0.0	11.4	9.0	13.0	11.0	16%
	JUN.	212	1.7	0.0	2.1	1.0	10.9	8.0	17.8	15.0	10%
	JUL.	236	1.4	0.0	1.8	0.0	12.3	9.0	18.4	17.0	6%
	AUG.	185	1.9	0.0	2.2	0.0	13.4	11.0	20.7	20.0	7%
	SEP.	202	1.6	0.0	1.7	0.0	11.7	8.0	17.6	16.0	10%
	OCT.	213	1.9	0.0	2.0	0.0	16.7	15.0	16.4	15.0	19%
	NOV.	164	1.8	0.0	1.9	0.0	18.0	13.0	16.0	14.0	28%
	DEC.	195	1.6	0.0	1.7	0.0	13.7	8.5	15.5	14.0	14%
	JAN.	181	1.3	0.0	1.2	0.0	15.6	9.0	13.3	12.0	28%
	FEB.	205	0.6	0.0	0.6	0.0	6.6	5.0	10.0	8.0	45%
	MAR.	220	0.7	0.0	0.8	0.0	6.1	3.0	8.9	7.0	59%
	APR	195	0.7	0.0	0.7	0.0	6.4	5.0	8.9	7.0	57%
Inpatient Evaluation	APR.	10	5.8	1.0	5.8	1.0	10.7	7.0	22.2	18.0	22%
	MAY	11	2.9	2.0	2.9	2.0	11.4	13.0	18.9	20.0	8%
	JUN.	10	3.0	1.0	3.0	1.0	14.0	12.0	12.3	15.0	25%
	JUL.	15	3.5	1.0	3.5	1.0	16.6	9.0	14.8	15.0	20%
	AUG.	15	4.5	1.0	4.5	1.0	10.0	11.0	25.5	17.0	7%
	SEP.	15	2.6	1.0	2.6	1.0	15.1	16.0	19.7	20.0	11%
	OCT.	17	1.5	1.0	1.5	1.0	19.0	19.0	23.6	22.0	0%
	NOV.	14	1.7	1.0	1.7	1.0	14.1	12.0	23.9	22.0	6%
	DEC.	11	4.1	1.0	4.1	1.0	13.1	12.0	22.2	27.0	10%
	JAN	13	4.0	1.0	3.8	1.0	12.2	11.0	24.7	23.0	0%
	FEB.	16	4.4	1.0	4.4	1.0	10.7	8.5	17.1	15.5	8%
	MAR.	18	3.1	1.0	3.1	1.0	6.8	7.0	15.5	14.0	10%
	APR	19	1.0	0.0	1.0	0.0	9.2	9.0	18.6	17.5	6%
Inpatient Restoration	APR.	59	1.8	1.0	1.8	1.0	37.2	16.0	38.6	44.0	24%
	MAY	63	1.8	1.0	2.1	1.0	35.9	19.0	26.2	15.0	25%
	JUN.	39	1.7	1.0	2.1	1.0	16.8	8.0	34.2	25.0	7%
	JUL.	78	1.7	1.0	2.1	1.0	16.1	10.0	20.8	15.0	25%
	AUG.	63	2.1	1.0	2.1	1.0	22.5	19.0	23.6	33.0	24%
	SEP.	82	1.7	1.0	2.0	1.0	24.3	15.0	23.0	14.0	26%
	OCT.	76	1.8	1.0	2.1	1.0	21.2	23.0	32.1	45.0	20%
	NOV.	58	1.2	1.0	1.4	1.0	31.9	28.0	33.5	47.0	24%
	DEC.	66	1.5	1.0	2.0	1.0	27.3	22.0	39.0	48.0	19%
	JAN.	61	2.7	0.0	2.9	0.0	29.2	18.5	33.6	44.0	23%
	FEB.	63	2.7	1.0	3.3	1.0	24.2	21.0	33.1	41.0	14%
	MAR.	77	2.0	0.0	2.5	0.0	25.9	27.0	28.3	21.0	30%
	APR	63	1.7	0.0	2.1	0.0	23.2	22.0	37.4	46.0	13%

EASTERN STATE HOSPITAL		Court Orders Signed	Days from order signature to:								Percent complete within 7 days of order
			hospital receipt of order		hospital receipt of discovery		end of month for incomplete referrals		completion		
			Average	Median	Average	Median	Average	Median	Average	Median	
Jail-based Evaluation	APR.	38	4.6	1.0	8.6	5.0	28.1	28.0	61.3	57.0	0%
	MAY	37	4.3	1.0	8.8	6.0	37.0	33.0	56.9	57.0	0%
	JUN.	38	4.1	1.0	8.3	6.0	38.0	39.0	65.6	64.0	0%
	JUL.	45	4.2	1.0	8.9	6.0	32.6	30.0	66.5	64.0	0%
	AUG.	32	2.4	1.0	6.4	5.0	33.4	32.0	57.7	56.0	3%
	SEP.	51	2.3	1.0	4.9	4.0	29.1	14.0	53.5	55.0	3%
	OCT.	33	1.9	0.0	4.9	4.0	16.4	10.0	39.5	40.0	3%
	NOV.	32	1.8	0.0	5.9	5.0	28.3	26.0	47.4	49.0	0%
	DEC.	48	1.7	0.0	3.2	1.0	21.7	18.0	38.7	35.0	3%
	JAN.	46	4.7	0.0	7.4	1.0	13.4	9.0	36.6	27.5	10%
	FEB.	39	1.4	0.0	2.0	1.0	10.4	6.0	15.5	12.0	25%
	MAR.	65	1.4	0.0	1.3	1.0	11.8	8.0	12.6	10.0	16%
	APR.	38	1.6	0.0	1.9	0.0	11.2	5.0	14.5	12.0	11%
Inpatient Evaluation	APR.	9	8.9	1.0	13.9	5.0	47.9	43.0	56.3	59.0	0%
	MAY	4	10.1	1.0	14.2	5.0	65.8	61.0	69.5	69.5	0%
	JUN.	4	7.7	1.0	11.1	5.0	75.2	68.0	89.9	102.0	0%
	JUL.	2	7.5	1.0	11.4	5.0	50.9	14.0	91.8	81.0	0%
	AUG.	5	10.2	1.0	19.6	5.0	44.5	31.0	78.2	80.0	0%
	SEP.	5	6.7	1.0	10.2	4.0	42.6	47.0	32.0	32.0	0%
	OCT.	8	2.0	1.0	7.9	6.0	28.9	16.0	61.1	70.0	0%
	NOV.	3	2.8	0.0	9.6	7.0	44.2	46.0	49.0	49.0	0%
	DEC.	12	2.4	1.0	4.2	2.0	21.1	20.5	83.6	84.0	0%
	JAN	7	5.4	1.0	8.9	2.0	30.9	31.0	52.9	51.0	0%
	FEB.	2	12.9	1.0	16.3	2.0	47.5	31.0	50.9	56.0	0%
	MAR.	5	15.5	1.0	16.3	1.0	19.2	15.5	69.2	45.0	0%
	APR.	3	3.7	1.0	4.1	1.0	17.8	11.0	37.0	36.0	0%
Inpatient Restoration	APR.	12	6.8	1.0	8.1	1.0	25.3	22.0	0.0	0.0	100%
	MAY	3	6.3	1.0	7.9	2.0	35.0	41.0	54.7	62.0	0%
	JUN.	4	0.6	1.0	1.8	1.0	45.3	39.0	46.0	56.0	20%
	JUL.	11	1.3	0.0	4.5	2.0	16.2	11.0	45.3	56.0	33%
	AUG.	15	1.6	0.0	5.7	3.0	26.4	27.0	35.5	35.5	50%
	SEP.	7	1.5	0.0	4.6	1.0	37.2	35.0	20.4	1.0	57%
	OCT.	10	3.2	0.0	6.4	4.0	45.6	37.0	87.4	93.0	0%
	NOV.	9	2.4	0.0	4.1	2.0	51.7	48.0	90.8	92.0	0%
	DEC.	6	3.8	0.0	4.2	0.5	26.3	20.0	84.7	86.5	0%
	JAN.	15	2.3	0.0	2.7	0.0	31.1	19.0	53.8	58.0	25%
	FEB.	18	2.0	0.0	2.3	0.0	24.2	24.0	55.8	43.5	0%
	MAR.	12	1.1	0.0	1.1	0.0	27.7	23.0	45.2	46.5	0%
	APR	11	1.6	0.0	1.8	1.0	12.3	11.0	30.0	31.0	0%

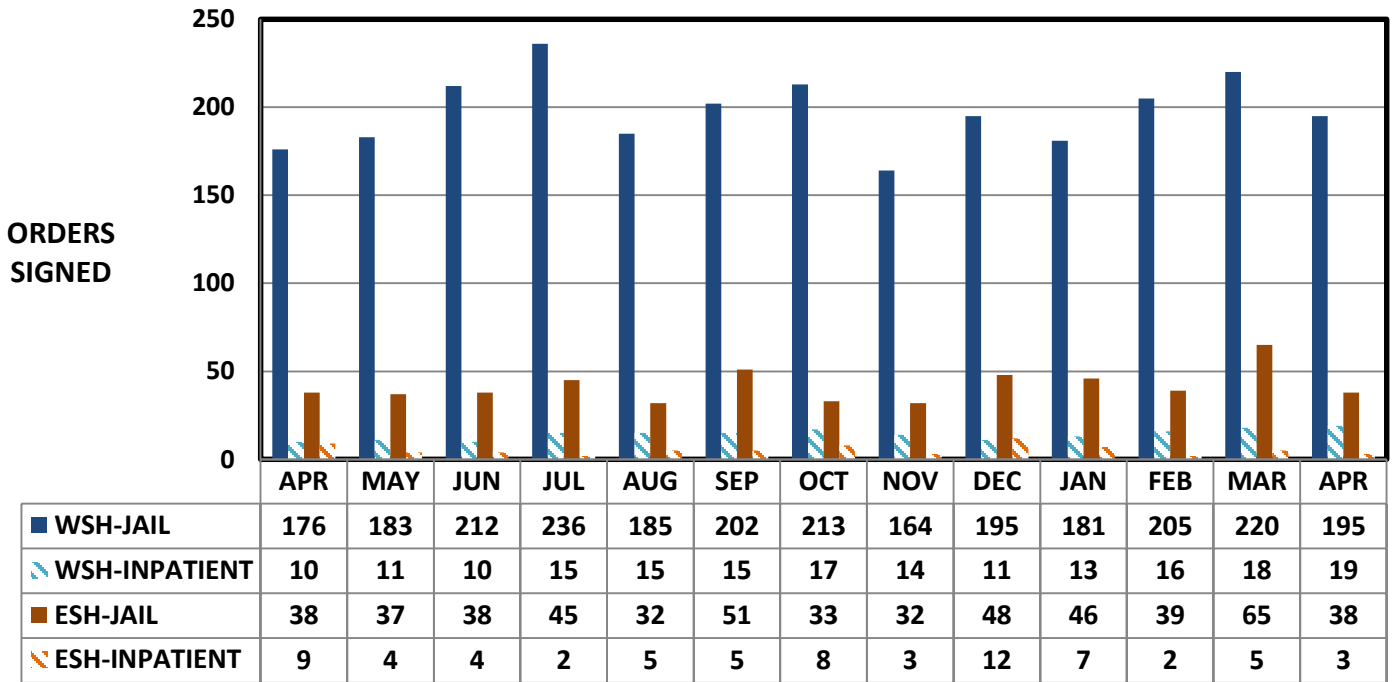
TOTALS BOTH HOSPITALS		Court Orders Signed	Days from order signature to:								Percent complete within 7 days of order
			hospital receipt of order		hospital receipt of discovery		end of month for incomplete referrals		completion		
			Average	Median	Average	Median	Average	Median	Average	Median	
Jail-based Evaluation	APR.	214	2.1	0.0	3.5	1.0	17.8	10.0	20.3	14.0	12%
	MAY	217	2.1	0.0	3.2	1.0	22.1	13.0	18.2	12.0	14%
	JUN.	250	2.3	1.0	3.6	1.0	20.8	13.0	24.1	17.0	9%
	JUL.	281	2.0	0.0	3.3	1.0	17.9	11.0	26.5	19.0	5%
	AUG.	217	2.0	0.0	3.0	1.0	19.7	13.0	25.4	21.0	6%
	SEP.	253	1.8	0.0	2.5	1.0	16.0	9.0	22.9	18.0	9%
	OCT.	246	1.9	0.0	2.5	1.0	16.6	11.0	19.2	16.0	17%
	NOV.	196	1.8	0.0	2.8	1.0	21.6	17.0	20.5	16.0	23%
	DEC.	243	1.6	0.0	2.1	0.0	16.2	10.0	20.4	15.0	11%
	JAN.	227	1.8	0.0	2.5	0.0	12.2	6.0	19.0	13.0	23%
	FEB.	243	0.7	0.0	0.8	0.0	7.4	5.0	11.0	8.0	42%
	MAR.	285	0.9	0.0	0.9	0.0	8.2	6.0	9.7	7.0	51%
	APR.	233	0.9	0.0	1.0	0.0	7.7	5.0	10.0	8.0	48%
Inpatient Evaluation	APR.	19	7.8	1.0	11.0	3.0	39.9	33.0	45.1	48.5	9%
	MAY	15	7.3	1.0	9.7	3.0	55.3	47.0	50.9	25.0	5%
	JUN.	14	5.9	1.0	8.0	3.0	65.0	54.0	44.4	18.0	15%
	JUL.	17	5.7	1.0	7.8	3.0	49.9	15.0	14.8	15.0	20%
	AUG.	20	6.9	1.0	8.4	2.0	33.0	17.0	53.9	29.0	5%
	SEP.	20	4.3	1.0	5.7	1.0	39.4	22.0	20.4	20.0	10%
	OCT.	25	2.4	1.0	4.3	1.0	27.6	19.0	30.8	24.0	0%
	NOV.	17	2.0	1.0	3.9	1.0	30.8	18.0	26.4	22.0	5%
	DEC.	23	3.3	1.0	4.1	1.0	17.8	14.0	47.5	29.0	6%
	JAN.	20	4.8	1.0	6.6	1.0	27.0	23.0	33.7	29.0	0%
	FEB.	18	7.7	1.0	9.0	1.0	24.5	12.0	30.6	22.0	5%
	MAR.	23	6.7	1.0	6.9	1.0	12.6	9.0	26.6	16.0	8%
	APR.	22	1.7	0.0	1.8	0.0	11.2	9.0	24.2	21.0	4%
Inpatient Restoration	APR.	71	1.5	0.0	2.2	1.0	35.3	16.0	37.6	43.0	26%
	MAY	66	1.5	0.0	1.9	0.0	35.8	20.0	27.8	18.0	24%
	JUN.	43	1.6	0.0	2.0	1.0	20.6	13.0	34.9	25.0	20%
	JUL.	89	1.4	0.0	1.9	0.0	16.1	10.0	24.5	20.0	26%
	AUG.	78	1.9	0.0	2.4	0.0	23.5	20.0	24.0	33.0	25%
	SEP.	89	1.6	0.0	2.1	0.0	27.6	21.0	22.7	13.0	29%
	OCT.	86	2.1	1.0	2.9	1.0	26.9	25.0	32.1	45.0	20%
	NOV.	67	1.5	1.0	2.0	1.0	37.2	34.0	42.1	49.0	21%
	DEC.	72	1.8	1.0	2.3	1.0	27.5	23.0	47.4	52.0	15%
	JAN.	76	2.6	0.0	2.8	0.0	29.6	19.0	37.5	46.0	23%
	FEB.	81	3.3	0.0	3.8	1.0	24.2	21.0	37.1	41.0	12%
	MAR.	89	1.3	0.0	2.2	0.0	26.5	24.0	31.8	39	24%
	APR	74	1.7	0.0	2	0.0	22.9	22.0	35.5	41	10%

Class Member Status Data Graphs (April data are "First Look" and subject to change)

Restoration orders

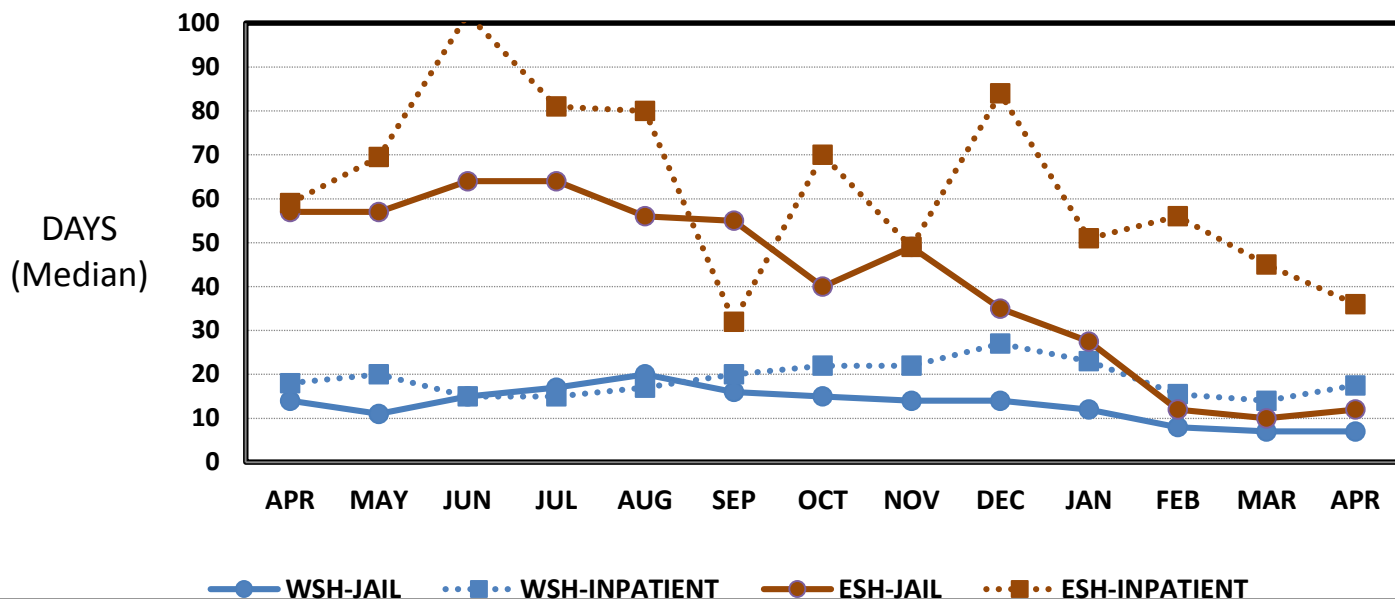


Evaluation orders



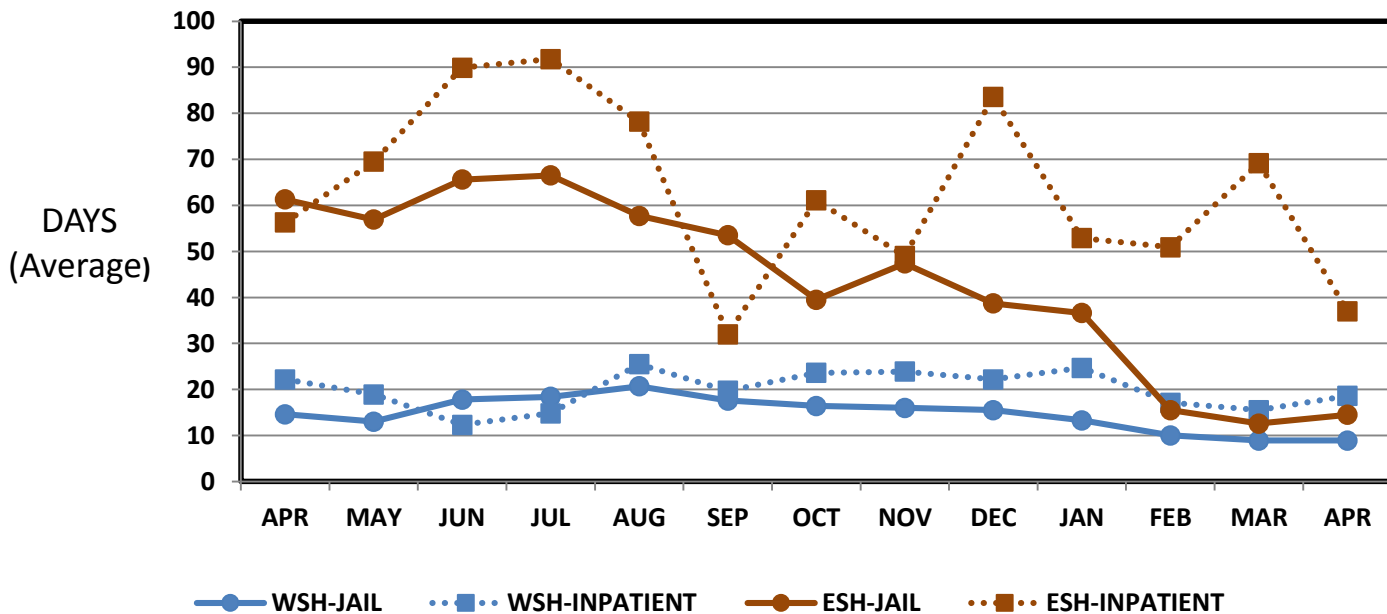
Evaluations - Median

Median days: order signed to referral completed



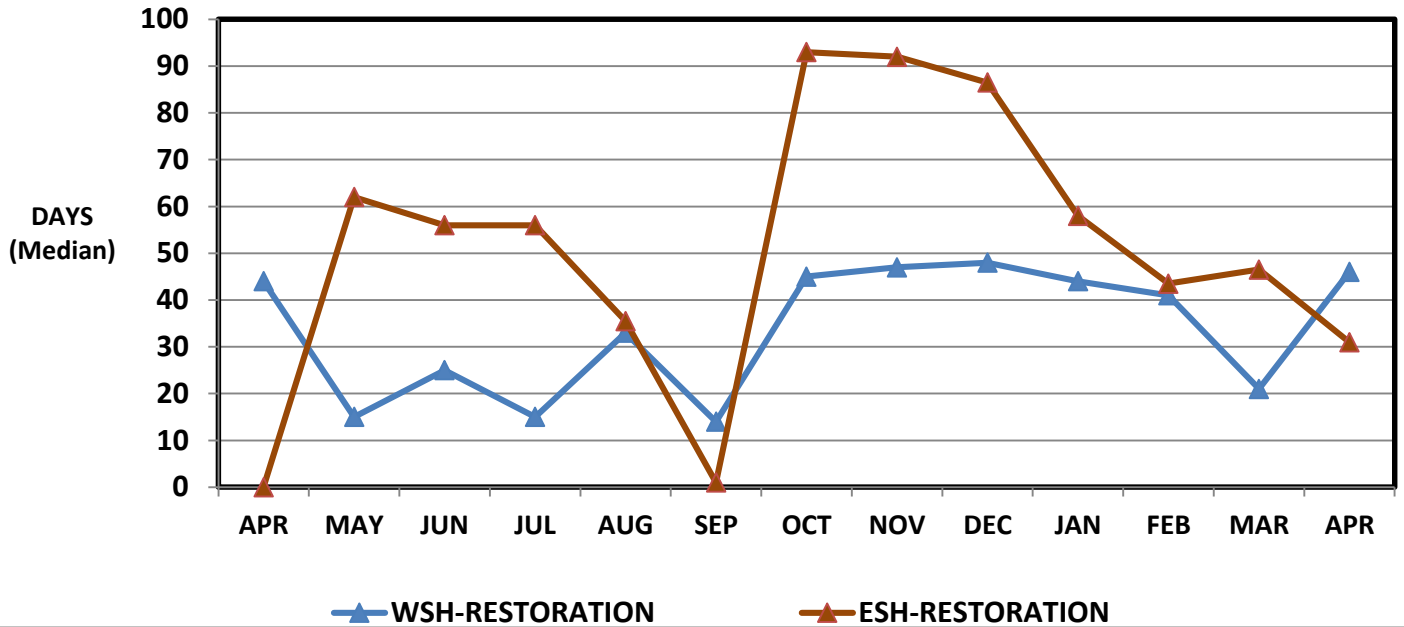
Evaluations - Average

Average days: order signed to referral completed



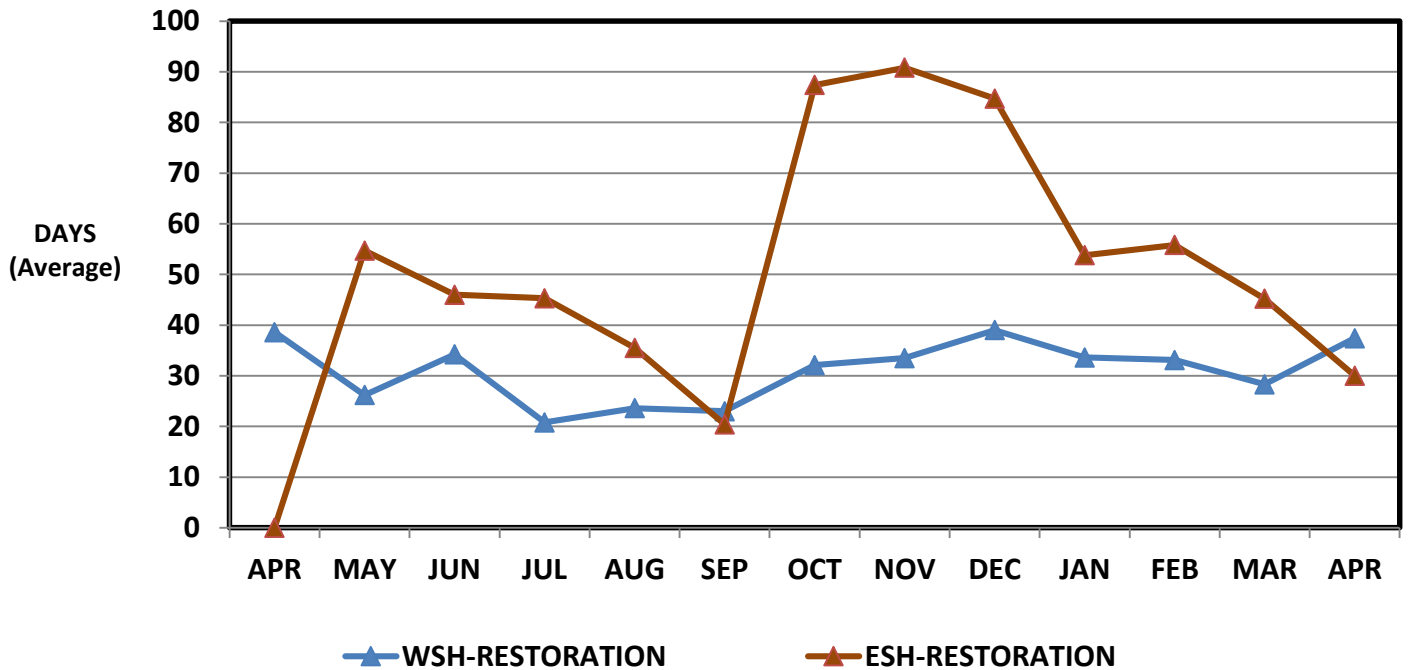
Restorations - Median

Median days: order signed to referral completed



Restorations - Average

Average days: Order signed to referral completed



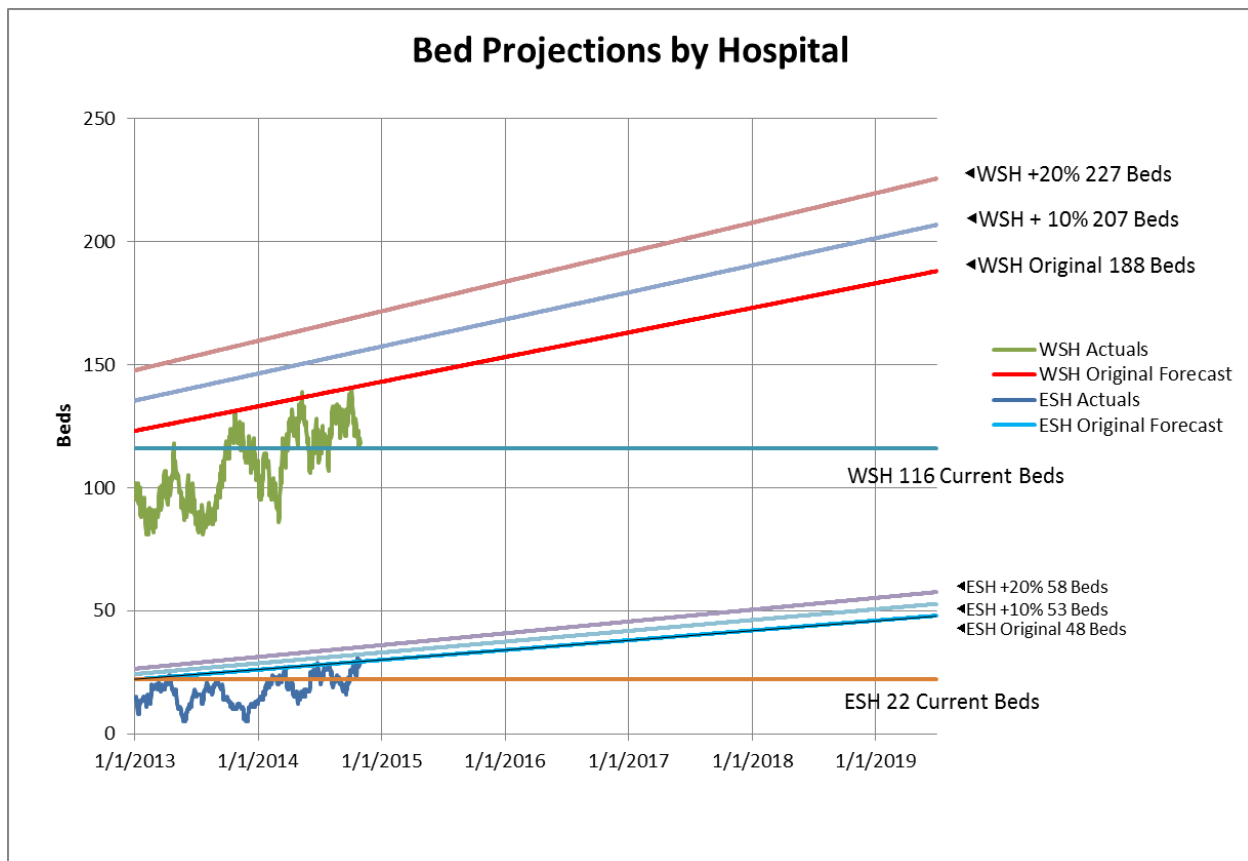
Resources Required to Provide Timely Competency Services

Need Projections and Bed Capacity

The investment made by the Legislature in the 15-17 biennial budget, and the short and long-term strategies that are being undertaken, will enable Washington to provide competency services within the seven-day time frames established by the Court. Washington is making every effort to provide competency services within the seven-day standard as soon as is possible. As of April, we believe that we can meet the seven-day standard for competency evaluation and restoration services by the Court's deadline of May 27, 2016. We believe we will also meet each of the Court's intermediary benchmarks.

The anticipated compliance dates are based on the estimates and data, detailed below, that were included in the Long Term Plan dated July 2015, the May 2016 revised Long Term Plan, and subsequent monthly reports.

Fiscal and program staff from DSHS and the Washington State Office of Financial Management modeled additional bed capacity needed to meet a seven-day standard for admission with assumptions of increases in demand at ten percent and twenty percent. The following graph illustrates the model as applied to WSH and ESH.



For mentally ill defendants ordered to receive competency restoration treatment, additional inpatient forensic hospital bed capacity must be developed or made available. Based on projections in the chart above, it is estimated that compliance with a seven-day standard will require 90 beds during the 15-17 biennium.

There are no additional changes to this resources section regarding funding, FTEs, evaluator positions, and restoration bed counts. If any of this information changes in the future, an update will be included.

Trueblood Key Accomplishments--April 2016

RECRUITMENT

- Thirty-seven staff have been hired to support the Maple Lane Competency Restoration Program. Remaining vacancies include six Residential Rehabilitation Counselor positions and two Security Guards. Interviews began the last week of April.
- Hiring for the Office of Forensic Services management positions are complete. The QA and Workforce Development positions were filled as of April 16. The top candidate for the Forensic Services Director was offered the position on 4/16/16 and his start date will be May 4.
- The Admissions Coordinator position, also in the Forensic Services unit, has been put on hold until further notice. A LEAN event is scheduled with all staff involved in the admissions process for both hospitals on 5/3/16. Outcomes of this event will determine next steps for hiring this position.
- A candidate has been identified to potentially fill Marcus Ehrlander's Compliance Reporting Specialist position. A decision will be made in early May. If the candidate does not work out, a job announcement has been written and a search effort will begin.
- ESH is scheduling a fourth hiring event in the Spokane area with a focus on LPNs and RNs. A date in early June now being decided upon.
- A Physician 3 candidate has been identified for a vacant position at ESH by Ted Koska. The candidate will be interviewed this week.
- We are exploring alternate qualifications for the Psychiatric Security Attendant (PSA) job class in order to expedite our recruitment efforts. Currently applicants, which may include staff currently working at the hospital in other positions such as Mental Health Technicians (MHTs), must have 2 years of experience in order to qualify as a PSA. One of the alternatives that is being explored is allowing additional training in the care of forensic patients substitute for some of the required years of experience. Any changes would need to include WSH and be negotiated with our labor partners.
- A new LPN recruitment strategy employed at Rainier School appears to be offering some success. Recruitment activities include: developing new job announcements, pulling together an interview team and promptly scheduling interviews, arranging prospective employee tours, conducting hiring events, and creating a recruitment center. Once employees are hired, training and staff mentors will be provided. Eight new placements have been made at Rainier since late March. Plans to expand the LPN recruitment strategy to the state hospitals is in the works, but DSHS is awaiting governor's office approval for a salary increase and signing bonus for this job class.

ALL FORENSIC EVALUATOR POSITIONS FILLED

- Eastern State Hospital was able to fill its fourth newly funded position in March.
- Western State Hospital has filled its ninth position.

SEVEN NEW HOSPITAL BEDS

- An additional seven beds were brought on-line at ESH for a total of 27 newly opened beds on ward 3S.

RESIDENTIAL TREATMENT FACILITIES

- The Yakima Competency Restoration Program had up to 10 patients in April. Two were restored to competency, leaving eight patients in the facility by the end of the month.
- The Maple Lane Competency Restoration became operational on 4/18/16, and served five patients in April, with more on the way. Thirty-seven DSHS staff have been hired at Maple Lane with six remaining positions to fill.
- Our most time consuming barrier to filling the beds in these facilities is related to resolving barriers with patients' court orders. As reported previously, a new court order was developed in Washington and released in early 2016. The court order, among other changes, allows for patients to be ordered into the custody of DSHS for restoration services, as opposed to being ordered directly to the state hospitals for treatment. DSHS and the Administrative Office of the Courts shared this form with stakeholders and partners. Two of our most densely populated counties, King and Pierce, are not using the new court order form and patients continue to be ordered directly to WSH. This creates a barrier to admitting patients into the alternate sites in a timely manner. DSHS continues efforts to educate partners and stakeholders on the new form and the new alternate sites – Maple Lane and Yakima. Attorney tours have been scheduled at both sites; a fact sheet has been developed and distributed to courts, prosecutors, defense council, the Washington Association of Prosecuting Attorneys (WAPA) and the Washington Association of Sheriffs and Police Chiefs (WASPC); multiple meetings with counties have been held (Clark, King, Chelan, Spokane); our AAGs discuss the new court orders at show cause hearings and bring copies to share; and our AAGs also educate counsel on cases where we are trying to get patients into alternate facilities through a court order revision. DSHS developed a "bed offer memo" to share with attorneys (on cases where the client is a good fit for an alternate site) indicating that a bed at an alternate site is ready with a revised court order.

TECHNOLOGY SOLUTIONS

- Mobile technology hardware is being deployed to 15 evaluators at WSH. This is a first wave and we expect the remaining evaluators will want to adopt mobile technology as they see peers using the technology effectively. This includes laptops (with integrated cellular) and a non-smart phone. They all have Citrix (Remote access) so they should be able to access internal network shares. This is a significant step in reducing our time to complete competency evaluations.
- **For example:** An evaluator is dispatched to Tri-cities for 2 scheduled interviews with defendants. The morning interview completes normally and the evaluator is able to take notes and prepare for dictation. The second interview is cancelled as the translator or defense attorney did not show. The interview has to be rescheduled. In cases where the defense council does not wish to be present, the evaluator could log in remotely, get the next case file in Tri-cities, review discovery and charging documents, and interview the newly scheduled defendant. The evaluator would have access to all necessary documentation to complete the interview in one session. The evaluator could take notes to prepare for dictation as usual. Historically, the evaluator would not have access to discovery and charging documents and often times would have to schedule a follow up interview with the defendant to ask questions specific to discovery or charging documents.

Trueblood Implementation Steps Taken and Planned—April 2016

Task	Key Milestones	Status / End Dates	Anticipated Outcome & Assumptions	Results Achieved & Barriers to Completion
Court Appointed Monitor Coordination				
Monthly Reports	Release 4/15 report	Complete	<ul style="list-style-type: none"> Maintain compliance with the Court Use data to review and improve the provision of forensic services 	<ul style="list-style-type: none"> Released April 15 report to Stakeholders following review of Court Monitor
	Submit 5/15 Report	5/15/2016		
	Post-Submission Review	TBD		
Legislative Coordination				
Implement Engrossed Second Substitute Senate Bill (2E2SSB) 5177	Develop implementation plan	TBD	<ul style="list-style-type: none"> Bill was enacted to provide remedies for improving the timeliness of forensic mental health services. Implement and operationalize the changes brought about by the bill through engagement of partners Agency request legislation: receive Governor's approval and prepare drafts for introduction in the 2016 session. 	<ul style="list-style-type: none"> On July 10, 2015, DSHS and Governor's office hosted Planning Meeting to discuss SB 5177 implementation, the 2015-2017 budget, and cross-system collaboration for the State's forensic mental health system. The governor's office invited members of the Tribes, the Counties, Public Defenders, Prosecutors, the Courts, the Administrative Office of the Courts, the Attorney General's Office, the State Legislature, Disability Rights Washington, NAMI Washington, and County Jails and Sheriffs. Workgroups reviewed specific goals and hurdles. New: The governor's office is now engaging a consultant to identify how best to keep people with mental illness out of jails and propose recommendations. These recommendations will be shared and vetted with the above stakeholders to determine next steps. The consultant is expected to be on board within a few weeks.
	Establish subgroups and an oversight committee as needed	TBD		
	Onboard Implementation Liaison position to facilitate cross system collaboration work	Complete		

Task	Key Milestones	Status / End Dates	Anticipated Outcome & Assumptions	Results Achieved & Barriers to Completion
<p>Implement Engrossed Substitute Senate Bill (ESSB) 6656: Funding applications</p>	<p>Apply for funding from the Office of Financial Management (OFM) from the Governor's Behavioral Health Innovation Fund relating to the state hospitals' forensic systems.</p>	<p>Passed legislature. Expires on July 1, 2019 per Section 14.</p>	<ul style="list-style-type: none"> • Section 6 of that bill creates the Governor's Behavioral Health Innovation Fund in the state treasury. Only the director of financial management or designee may authorize expenditures from that Fund, which are provided solely to improve quality of care, patient outcomes, patient and staff safety, and the efficiency of operations at the state hospitals. • Section 7(1) and (2)(d) & (j) allows DSHS to apply to OFM to receive funds from the Innovation Fund. The application must include proposals to increase the overall function of the state hospital system in one or more categories, including: (a) increasing capacity and instituting other measures to reduce backlogs and wait lists in both the civil and forensic systems; and (b) improving the provision of forensic mental health services. 	<ul style="list-style-type: none"> • Sections 6 and 7 of ESSB 6656 take effect immediately pursuant to Section 18, pending the Governor's signature. Funds are appropriated to the Governor's Behavioral Health Innovation Fund pending enactment of the 2016 Supplemental Operating Budget. • In addition, Section 5(2)(b)(ix) requires OFM to contract with an external consultant to examine the current configuration and financing of the state hospital system and make recommendations on a number of different areas, including identification of the potential costs, benefits, and impacts associated with dividing one or both of the state hospitals into discrete hospitals to serve civil and forensic patients in separate facilities. The consultants' report is due to the Governor and Legislature by Oct. 1, 2016. • The first meeting of the Select Committee for Quality Improvements in the State Hospitals met on 4/29/16 was held on 4/29/16. The committee will meet monthly for the next several months. A process to request innovation funds had not yet been determined.

Task	Key Milestones	Status / End Dates	Anticipated Outcome & Assumptions	Results Achieved & Barriers to Completion
Provide regular implementation and progress updates to Legislative body and staff	Schedule twice monthly update conference call or in-person meeting	Ongoing	<ul style="list-style-type: none"> • Keep Legislators and staff up-to-date on status of Trueblood and SB5177 implementation • Provide opportunity to address questions related to monthly reports or the long-term plan 	<ul style="list-style-type: none"> • Biweekly meetings are being held.
Consult with DOH about draft legislation requiring DOH certification of forensic evaluators to determine the need for a sunrise review	Consult DOH	Ongoing	<ul style="list-style-type: none"> • Expanded pool of forensic evaluators would help improve timeliness. Licensure would provide quality assurance and create professional standards for forensic evaluators. • Develop long-term certification of forensic evaluators, consistent with the Trueblood Court Monitor's recommendations on mid- and long-term performance to implement a forensic certification program to sustain performance (p. 33 of the Monitor's Quarterly Report to the Court) 	<p>DSHS/BHSIA staff met with DOH on 12/15/15. DOH expressed a number of concerns, and focused on the following two barriers:</p> <ul style="list-style-type: none"> • Timing considerations. DOH stated that the best case scenario to establish a credential program for forensic evaluators (licensing or certification) would take at least two years, with an existing training/educational program. Lacking such a program, it would likely take longer. Per DOH, it would be best to conduct a sunrise review, requiring a formal legislative request and additional DOH review. • Feasibility/sustainability. DOH expressed concerns about funding. Funds are derived from a licensing program, particularly licensing fees, and must be self-sustaining. DOH cannot expect a legislative subsidy. Considering economies of scale here, the cost for annual licenses may be prohibitively high.
Labor Coordination				
Engage Labor Leaders and Members	Conduct ongoing bi-monthly meetings with Labor leaders	Ongoing	<ul style="list-style-type: none"> • Discuss policy, budget and operational changes likely required to comply with the Trueblood requirements 	<ul style="list-style-type: none"> • Labor submitted no alternatives to contracting for out psy. services at WSH by the 11/25/15 deadline.

Task	Key Milestones	Status / End Dates	Anticipated Outcome & Assumptions	Results Achieved & Barriers to Completion
	Alternatives to contracting submission deadline	Complete	<ul style="list-style-type: none"> Obtain staff necessary to safely support operation of additional forensic and civil beds at the state hospitals Obtain necessary psychiatrists and physicians to supplement services proved by employees at Western State Hospital to safely support the operation of additional forensic and civil beds 	<ul style="list-style-type: none"> Labor submitted no notification of intent to form an Employee Bargaining Unit. Prepared letter to notify Labor of plans for opening a Residential Treatment Facility at Maple Lane for issue on January 5.
	Deadline for notification of intent to form an Employee Business Unit	Complete		
Data Collection and Fiscal Modeling				
Monthly report data collection	Identify and obtain needed data	Ongoing	<ul style="list-style-type: none"> Obtain data for monthly reports and develop standardized reports to inform policy development and implementation 	<ul style="list-style-type: none"> Data collection is ongoing
Institute data audit process	Review data and files of cases with anomalies	Ongoing	<ul style="list-style-type: none"> Ensure completeness and accuracy of wait list data 	<ul style="list-style-type: none"> Data validation process is ongoing
	Identify trends	Ongoing		
Hire Statistician/ Forecaster	Develop PDF	Complete; updated 12/30/15 to meet agency wide need	<ul style="list-style-type: none"> Provide expertise to develop models to predict need for competency services and develop an algorithm for admissions to State Hospitals to meet the 7 day standard and make optimal use of available beds 	<ul style="list-style-type: none"> An offer was made and accepted for this position, with a start date of May 16, 2016.

Task	Key Milestones	Status / End Dates	Anticipated Outcome & Assumptions	Results Achieved & Barriers to Completion
	Establish position	Complete		
	Recruit	Complete		
	Hire	Complete		
	Onboard	TBD		
Hire Data Architect Position	Develop PDF	Complete	<ul style="list-style-type: none"> • Build a technology solution to establish a common platform to transmit data between the State Hospitals and over 240 different jurisdictions to improve timeliness • Provide hands-on partner training across the system 	<ul style="list-style-type: none"> • Working with Data Architect from WaTech while we continue to look for qualified permanent candidates.
	Establish position	Complete		
	Recruit	On hold		
	Hire	TBD		
	Onboard	TBD		
Hire Data Manager Position	Develop PDF	Complete	<ul style="list-style-type: none"> • Develop standardized data reports to inform fiscal and program operations and improve data integrity as recommended by JLARC and Groundswell 	<ul style="list-style-type: none"> • Previously filled position is currently vacant as of 10/1/15. Conducted review of the position description as part of the overall data position and structure review and determined to centralize within the Decision Support and Evaluation group at HQ. This position will be involved in forensic services data management, and will supervise the Forecast Analyst position, which is also relocating to DSE. In January the position was reviewed and the PD was updated and sent on 1/27/16 to the Banding Committee for review. • The position description was reviewed at the 1/27/16 Banding Committee; it was posted on 2/23/16 and recruitment is underway. The position is now located in the Decision Support and Evaluation section of BHA.
	Establish position	Complete		
	Recruit	Complete		
	Hire	TBD		
	Onboard	TBD		

Task	Key Milestones	Status / End Dates	Anticipated Outcome & Assumptions	Results Achieved & Barriers to Completion
				<ul style="list-style-type: none"> Interviews for this position were held on April 20. The top candidate was offered the position.
Hire Web Developer	Develop PDF	Complete	<ul style="list-style-type: none"> Will work on user interface for forensic data system. 	<ul style="list-style-type: none"> Web developer has reviewed all existing documentation
	Establish position	Complete		
	Recruit	Complete		
	Hire	Complete		
	Onboard	Complete		
Forensic System Design / Development	Review data dictionary	Complete	<ul style="list-style-type: none"> Integrated Forensic System with consistent data entry and tracking of all class members from creation of court order for mental competency evaluation through completion of evaluation and / or restoration (whichever is later). Provide capability for access by evaluators to discovery documents and any status changes, regardless of location, to reduce delays Provide platform for quality reporting from single system, eliminating the variability currently inherent in leveraging legacy applications not meant for this purpose 	<ul style="list-style-type: none"> Project Governance structures identified and membership being clarified.
	Prepare requirements document	Drafted and under review		
	Build data models	First draft prepared		
	Defining functionality	Complete		
	Finalized Gaps analysis	6/15/2016		
	Finalized task list and timeline	6/15/2016		
	Monitor review	3/15/2016		
	Implement revisions	5/27/2016		
	Establish Project Governance Structure	6/15/16		
Human Resources				
	Reposting	Complete		

Task	Key Milestones	Status / End Dates	Anticipated Outcome & Assumptions	Results Achieved & Barriers to Completion
Hire Forensic Services Director	Engage experts and obtain suggested contacts from Court Monitor	Complete	<ul style="list-style-type: none"> • Provide leadership and oversight for Forensic Mental Health Services operations 	<ul style="list-style-type: none"> • Initial recruitment effort did not identify a successful candidate. • Worked with recruiter on developing a recruitment profile in preparation for February re-posting of position. • Position was posted on 2/12/16. • Twelve total applications have been received, with four deemed qualified. Of the four, one had an informational call with the Assistant Secretary and is scheduled to fly in for meetings and an interview on April 4, 2016. A second had an informational call with Carla, and the application for the third is being reviewed by the Assistant Secretary. The fourth is a previous applicant and will not be considered further. • DSHS is following the steps set out in the February 8 order, including to provide a Recruitment Approach Update to the monitor on February 27. The update notes outreach efforts by the Assistant Secretary with several experts in the field and the results of those contacts. • Job offer made to Dr. Kinlen and accepted on April 4, 2016, with a start date of May 4, 2016.
	System leaders contact candidates	Complete		
	Schedule interviews	Complete		
	Complete interviews and secure references	Complete		
	Check references and complete application requirements	Complete		
	Extend offer or report on reasons for inability to hire	Complete		
Hire Office of Forensic Services HQ positions	Develop Position Descriptions	Complete	<ul style="list-style-type: none"> • Provide infrastructure for forensic services system and improve effective and timely provision of competency services 	<ul style="list-style-type: none"> • Interview and reference checks were completed and the Workforce Development position, a job was offered and accepted for a start date of 4/16/16. • A Forensic Services Quality Manager was hired with a start date of 4/16/16.
	Establish positions	Complete		
	Post positions for recruitment	Complete		

Task	Key Milestones	Status / End Dates	Anticipated Outcome & Assumptions	Results Achieved & Barriers to Completion
	Conduct Interviews	Complete		<ul style="list-style-type: none"> One evaluator support position has been created and filled at ESH, and one administrative position at WSH is being double filled to provide this capacity while position development continues for the two funded evaluator support positions at WSH.
	Hire and Onboard	TBD		
Hire additional hospital ward staff	Hired recruiter	Complete	<ul style="list-style-type: none"> Obtain required staff of all classes to safely and appropriately operate additional civil and forensic beds and to meet data collection, analysis and reporting needs 	<ul style="list-style-type: none"> ESH is scheduling a fourth hiring event in the Spokane area with a focus on LPNs and RNs. 27 beds are now open at ESH and staffed. No further expansion planned. Ongoing hiring planned for ESH and WSH, but not related to ward expansion, only filling vacancies.
	Establish recruiting marketing campaign	Complete		
	Conduct targeted hiring events	In progress		
	Pursue contracting	In progress		
	Weekly hiring status report	Ongoing		
	Institute employee hiring recruitment incentive pilot	Complete		
	Medical transcriptionist hired	Complete		
Competency Evaluation				
Hire additional evaluators	Hiring at WSH	In progress	<ul style="list-style-type: none"> Increase evaluation capacity and reduce wait time for evaluation 	<ul style="list-style-type: none"> As of 4/30/16, 9 of 9 new WSH positions are filled. As of 3/31/16, all 4 of the new 4 ESH positions have been filled.
	Hiring at ESH	In progress		
	Transfer one ESH vacant position to WSH	Complete		
Hire two new Forensic Services Supervisors	Complete PDs	In progress	<ul style="list-style-type: none"> Will provide needed additional supervisors of Forensic Evaluator staff; leading to improved effectiveness and efficiency of evaluators 	<ul style="list-style-type: none"> Developed plan for drafting position descriptions in consultation with current supervisors. Position description and position
	Recruit	TBD		
	Hire	TBD		

Task	Key Milestones	Status / End Dates	Anticipated Outcome & Assumptions	Results Achieved & Barriers to Completion
				<p>establishments are in progress. The position description is planned to be completed by April 29 to submit for the May 6 banding committee.</p> <ul style="list-style-type: none"> • With the arrival of the Forensic Services Director, these positions are temporarily on hold to allow time for review.
Build capacity for out-station sites	Identifying Out-station sites	In progress	<ul style="list-style-type: none"> • Increased capacity at out-station sites will reduce wait time for evaluation 	<ul style="list-style-type: none"> • Out-station site for Everett became operational 11/03/2015. Completed and currently in operation. • 2 full time evaluators are stationed in Vancouver, WA (Clark County) as of 4/12/16. • Full time evaluator is stationed in Vancouver, WA (Clark County) as of February 1, 2016. A second evaluator will be out-stationed in Clark County on 4/12/16. NEW: The evaluators will be moving to the Harney Building in Vancouver in April. • Regularly scheduled visiting evaluator pilot set for rotation in Thurston, Kitsap, Yakima and Lewis counties as of the end of December, 2015. • DSHS is moving forward with opening outstations in Yakima and Kennewick. Kennewick outstation is slated to be operational 6/1/2016. DSHS Facilities and IT continues to work on identifying appropriate accommodations and mobile office needs for out stationed evaluators.
	Site agreement/contract processes	In progress		
	Out-station sites operational	Completed		

Task	Key Milestones	Status / End Dates	Anticipated Outcome & Assumptions	Results Achieved & Barriers to Completion
Coordinate with forensic mental health system partners	Created a template to organize cross partner county specific discussions and to document results	Complete	<ul style="list-style-type: none"> Conversations with select jails close to hospitals or already designated for outstation sites are focused on creating space for evaluations on a regularly scheduled basis and ability to transport to state hospital. Secondly to discuss with local defenders associations regarding predictable availability to attend with clients; courts for coordination of timely transmittal of orders and documents; and local mental health agencies for additional supports and perhaps space where that is identified as a challenge. Presentations at the WASPC conference will provide opportunity to inform about impacts of Trueblood decision and make connections with members for future planning to facilitate transfer and access to reduce wait times and provide competency services 	<ul style="list-style-type: none"> DSHS is contacting each county directly to confirm whether participating in Community Competency Evaluation meeting. DSHS released an RFP for the 5177 Prosecutorial Diversion dollars on 2/4/16. The RFP was sent to all RSN administrators, HCA, Early Adopter Region contacts, the Washington Association of Prosecuting Attorneys, and the Washington State Association of Counties. Proposals were due 2/26/16. 7 total proposals were received: Lewis County, Greater Columbia RSN, Pacific County, Jefferson County, Thurston County, King County, and Spokane County. 2 DSHS representatives, along with a Pierce County defender, a Snohomish County defender, and a City of Everett prosecutor are scoring the proposals. NEW: On 3/11/16, an announcement was sent to all applicants informing them of the status of their proposals. King County, Pacific County, Greater Columbia, and Spokane County were awarded funding. Based on funding allocations, DSHS was able to fund 2 west side and 2 east side counties/regions, and 2 urban and 2 rural areas. Contracts were sent to contractors 4/21/16. DSHS anticipates receipt of fully executed contracts by 5/20/16.
	Convene initial meetings	Ongoing		
	King County-hosted follow-up meeting	10/1/2015		
	Yakima County meeting with jail, defense attorneys, court and prosecutors	9/10/2015		
	Skagit County facility tour and in-person meeting	10/7/2015		
	Benton County facility tour and partnership meeting	9/28/2015		
	Partner meeting: City of Yakima	10/7/2015		
	Partner meeting: Snohomish	10/19/2015		
	Partner meeting: Pierce	9/30/2015		
	Partner meeting: Franklin	Ongoing		

Task	Key Milestones	Status / End Dates	Anticipated Outcome & Assumptions	Results Achieved & Barriers to Completion
	Present at the Washington Association of Sheriffs and Police Chiefs (WASPC) annual conference	11/17/2015		
Continue current County-conducted evaluation system until 2018	Define data elements needed from counties that are conducting their own evaluations	11/30/2015	<ul style="list-style-type: none"> Obtain data needed from counties in order to meet court ordered reporting requirements 	<ul style="list-style-type: none"> DSHS met with King County on 2/25/16 for the specific purpose of determining the possibility for dedicated space at the jail as well as a shared calendar system for evaluations. The outcome of that meeting was that four workgroups were formed to meet in advance of the next meeting to bring recommendations to the group on the following: space/calendar/slots; defender availability and immunity; triage and court screening; and Seattle Municipal Court Issues. NEW: The group reconvened on 3/15/16 and 4/28/16 to report out recommendations. We are moving forward with the piloting of a coordinated calendar solution in King County Superior Court. Pilot is anticipated to go-live 5/23/16. DSHS reached out to Snohomish County Jail regarding the possibility of connecting to their videoconferencing network on 2/18/16. After speaking with jail IT staff, it was determined that they need to look at staff capacity prior to a test of the network occurring. We agreed to revisit in March. DSHS is working with a representative of Chelan County to schedule a community meeting. Meeting occurred 4/21/16.

Task	Key Milestones	Status / End Dates	Anticipated Outcome & Assumptions	Results Achieved & Barriers to Completion
				<ul style="list-style-type: none"> • DSHS has been working with Yakima County Jail to connect to their video network via Jabber. Three initial tests have failed, as of 3/31/16, Yakima Jail IT and WSH IT continue to work together to identify a solution. • DSHS is also working with the Benton County Jail to establish a video conferencing connection. The testing has been delayed due to IT updates taking place at the Benton County Jail. Those updates are expected to finish 5/24/16, at which point we will recommence testing. • DSHS met with the Clark County Criminal Justice Policy and Procedure Committee to discuss the use of the new court order forms. The members encouraged all parties to participate in a shared calendar system which would potentially extend to both in-custody and out of custody evaluations. No decisions regarding using a shared calendar have yet been made.

Task	Key Milestones	Status / End Dates	Anticipated Outcome & Assumptions	Results Achieved & Barriers to Completion
Evaluate potential for distributing mobile equipment	Test a remote access system	Complete	<ul style="list-style-type: none"> • Provide out-stationed evaluators with the capacity to access DSHS systems and electronic health records remotely • Support more rapid entry of evaluation information and reduce duplicate data entry 	<ul style="list-style-type: none"> • We have concluded our initial testing of mobile solutions for the Forensic Evaluators. • Encrypted digital voice recorders (DVR) have stalled due to technical difficulties. We are researching a solution to further expedite evaluator efficiency. • NEW: As of 5/5/16, most of the 15 evaluators at WSH were equipped with laptops with integrated cellular connectivity and non-smart phones. As of 4/30/16, 15 WSH laptops have been configured; three have been deployed. The Digital Voice Recorder (DVR) solution has been delayed due to technical issues which are being resolved. Target for completion and deployment 5/31/16. • Three outstations have been staffed and equipped. (Everett, SCORE, and Vancouver). IT resources have been allocated to support these outstations.
	Pilot a remote access system to be used in the field	Moved to implementation		
	Expand Pilot to all Evaluators	In process - completion planned for 5/15/16		
Explore and pursue triage system possibilities	Submit proposed triage system plan for comment.	Complete	Establish an efficient evaluation to identify individuals who: <ul style="list-style-type: none"> • Need inpatient services due to serious mental health condition • Clearly do not require inpatient evaluation services; or 	<ul style="list-style-type: none"> • Court's February 8 Order provides specific requirements regarding triage system. • In response to the court order we developed a triage model and submitted it to the court monitor on March 1 for comment. Rollout of
	Secure mail box for referrals established	Complete		

Task	Key Milestones	Status / End Dates	Anticipated Outcome & Assumptions	Results Achieved & Barriers to Completion
	SFT account for confidential transfer of potentially HIPPA sensitive information	Complete	<ul style="list-style-type: none"> Are clearly competent due to changes in their condition since the issuance of an order for evaluation (such as no longer drug affected) 	<p>Phase I began March 15.</p> <ul style="list-style-type: none"> Phase I involves the temporary use of a master's level clinician to screen cases by phone for potential expedited admission through the triage consult process and share that information with medical directors for final decision making. We would receive referrals by e-mail and respond by e-mail or phone. Phase I went live 3/15/16. Communications were sent out to jails and defenders on 3/21/16 and 4/8/16, respectively. Phase II requires us to hire three clinicians with prescriptive authority to visit jails and perform screenings as needed. The hiring process is expected to take until July. On 2/18/16, DSHS reached out to the Snohomish County Jail to obtain materials regarding their jail diversion triage program. Snohomish County Jail agreed to share the information. NEW: DSHS will also be looking into the King County triage project to help inform the larger Triage Work Plan. DSHS had a conversation with King County regarding their various triage processes on 4/27/16 and will evaluate the models.
	Temporary transfer file enable to handle requests	Complete		
	Master's level clinician identified to fill phase I role until Phase II staff are available.	Complete		
	Memo to Jail/court partners to be distributed explaining the process and giving instructions for submissions.	Complete		
	Roll out Phase I	Complete		
	Roll out Phase II	7/15/2016		
Competency Restoration				
Western State Hospital (WSH); S4 Ward: add 15 beds	Design and Permitting	Complete	<ul style="list-style-type: none"> Serves overall plan to add 90 beds and expand State Hospital bed capacity to meet Court ordered compliance date 	<ul style="list-style-type: none"> Fifteen patients have been moved on to S4.
	Construction	Complete		
	Labor Discussions	Complete		

Task	Key Milestones	Status / End Dates	Anticipated Outcome & Assumptions	Results Achieved & Barriers to Completion
	Staff Onboarding	Complete	<ul style="list-style-type: none"> Moving forensic patients from E1 to S4 will open restoration beds 	
	Ward preparation and patient movement	Complete		
	Complete fence project	Complete		
	Complete Guard Shack	Complete		
	Added 10 beds	Complete		
	Add 5 additional beds	Complete		
WSH; E2 and F3 Wards: add 30 beds	Design and Permitting	Complete	<ul style="list-style-type: none"> Serves overall plan to add 90 beds and expand State Hospital bed capacity to meet Court ordered compliance date 	<ul style="list-style-type: none"> Due to recent CMS survey results and DSHS plans to meet the requirements set out by CMS, the plans to open F3 have been postponed. Difficulties in bringing on sufficient staffing have been a major hurdle. Physical/architectural modifications are complete.
	Patient movement: E2 to E4	Complete		
	Construction	Complete		
	Labor Discussions	On hold		
	Develop hiring plan	Complete		
	Ward Preparation and patient movement F3 to E2	Complete		
	Renovations to F3	Complete		
	Bed Occupancy	TBD		
ESH; 3S Ward: add 30 beds	Open ward with Competency Restoration beds	Complete	<p>Serves overall plan to add 90 beds and expand State Hospital bed capacity to meet Court ordered compliance date</p> <ul style="list-style-type: none"> NEW: The number of newly opened forensic beds was expanded in April from 20 to 27. ESH is now complete with their ward expansion plans. Original plan was for 30 beds. Renovations required reduced the total number to 27. Many staff have been hired and are currently going through orientation and training. 	

Task	Key Milestones	Status / End Dates	Anticipated Outcome & Assumptions	Results Achieved & Barriers to Completion
Open Competency Restoration treatment program at Maple Lane	Open Maple Lane facility	Complete	<ul style="list-style-type: none"> Identify alternate facility capacity to meet <i>Trueblood</i> compliance. Any competency restoration treatment program at Maple Lane is anticipated to transfer to operation at a State Hospital before DOC would be housing inmates on that campus 	<ul style="list-style-type: none"> 37 staff were hired in March to support the Maple Lane Competency Restoration Program, including our new Residential Services Manager. BHA continues to partner with HRD to expedite MLS hiring, complete background and employee file checks for state employees. Five patients were served at Maple Lane in April
Open Competency Restoration treatment program in Yakima	Open Yakima facility	Complete	<ul style="list-style-type: none"> Anticipated duration of one year and possible one year extension. Identify alternate facility capacity to support timely competency services that will meet the <i>Trueblood</i> compliance deadline of 05/27/16. 	<ul style="list-style-type: none"> Continue finalizing procedures to effectively discharge and transfer patients into the new RTFs. One step is making sure that the patient's court order clearly allows DSHS to move the patient. Patient roster rose to ten in April. Temporary restraining order has been extended to May 6th. Continued to work with Comprehensive to finalize policies and address concerns with the facility raised by stakeholders and the Court Monitor's expert consultants.
County transport of patients	Coordinate with counties to develop transport protocols	TBD	<ul style="list-style-type: none"> Ensure timely transport of patients to support delivery of competency services as directed in court order 	<ul style="list-style-type: none"> See updates in Evaluation partner discussion section(s) above
Diversion Alternatives				
Implement new SB 5177 provisions for dismissal of	Issuance of RFS for distribution of appropriated funding	TBD	<ul style="list-style-type: none"> Prosecutor can dismiss criminal charges without prejudice & refer to community-based mental health services 	<ul style="list-style-type: none"> DSHS issued an RFP to distribute the State portion of diversion dollars. See above

Task	Key Milestones	Status / End Dates	Anticipated Outcome & Assumptions	Results Achieved & Barriers to Completion
charges & referral to treatment	Diversion programs operational	TBD		
Establish a Diversion Taskforce	Establish Task Force Membership	4/1/2016	<ul style="list-style-type: none"> Establish a taskforce modeled after Michigan's Mental Health Diversion Council, and membership from key state partners is currently being developed to include a charter and scope. It is anticipated that the scope will be broader than outlined in SB5177 which includes only post-booking diversion. 	<ul style="list-style-type: none"> Governor's Office has identified staff from HCA, DOC, and DSHS to participate in initial internal workgroup Decision Package has been submitted to fund efforts. The Governor's proposed budget released in December included the requested funding, but was not included in the final budget. In an effort to continue the work that has already started, the governor's office is hiring a consultant to perform community stakeholder interviews regarding diversion needs. The consultant's recommendations and report will be shared with the community by end of year.
	Develop charter and scope. Convene task force.	4/1/2016		
Staff and Patient Safety				
State Hospital Psychiatric Intensive Care Unit (PICU)	Construction	Complete	<ul style="list-style-type: none"> Recommendation of Labor/Management Ad Hoc Safety Committee to enhance staff and patient safety 	<ul style="list-style-type: none"> Supplemental budget allocated \$339k for development of a PICU—construction will take place to establish an 8 bed space Proposed budget has funding for 23 FTE to implement a 1-3 bed PICU Bed occupancy in excess of 3 patients dependent on additional funding
	Staff Ward Preparation	4/15/2016		
	1-3 bed occupancy	1/1/2017		
	Occupancy beyond 3 beds	TBD		
Psychiatric Emergency Response Teams (PERT) teams (1	Labor discussions; Staff training; Equipment; purchase	Complete	<ul style="list-style-type: none"> Recommendation of Labor/Management Ad Hoc Safety Committee 	<ul style="list-style-type: none"> Likely need PERT team at ESH forensic wards for higher acuity patients who have been in jail for less time

Task	Key Milestones	Status / End Dates	Anticipated Outcome & Assumptions	Results Achieved & Barriers to Completion
additional WSH and 1 at ESH)	Staff onboarding	Complete ESH; Pending Civil at WSH		<ul style="list-style-type: none"> Has been implemented at ESH and is pending implementation on the civil side at WSH. Weekly work groups focused on rollout of PERT team at WSH on civil side. Training for team members to begin 7/15/16.
	PERT teams operational	Complete ESH; Pending Civil at WSH		
Staff safety training in de-escalation and other skills to reduce workplace violence designed and delivered by State Hospital staff experts	Approval of proposed budget	Complete	<ul style="list-style-type: none"> Recommendation of Labor/Management Ad Hoc Safety Committee to enhance patient and staff safety 	Budget provided 9 of the requested fill behind FTEs to include: <ul style="list-style-type: none"> PSA/MHT Training—16 hours LPN Training—18 hours RN Training—24 hours
	Develop curriculum	Complete		
	Broaden training of best practices for interaction with patients	Ongoing		
	Develop system to monitor annual training implementation	Ongoing		
Conduct comprehensive assault incident reviews	Hire 2 patient-to-staff assault incident reviewers	Complete	<ul style="list-style-type: none"> Post-incident de-briefing and root cause analysis of assault incidents will identify necessary systems changes to increase staff safety 	<ul style="list-style-type: none"> Assault incident reviewer FTEs were not in BHSIA's budget but we absorbed the cost and went forward.
	Establish assault workgroup	Complete		

Appendix A: Class Member--Evaluation Information for March 2016

Hospital	Class Member	County	Offense	Completion Method or Incomplete	Order Signed Date	Number of days from signed order to:			
						Order Received	Discovery Received	Complete	Incomplete End of Reporting Period
WSH	4217	MASON	MISDEMEANOR	CANCELLED	2/3/2016	19	19	27	.
WSH	4243	KING	FELONY CLASS C	BED OFFERED	2/8/2016	17	17	30	.
WSH	4268	WHATCOM	Bellingham (M)	FAXED	2/10/2016	14	14	22	.
WSH	4269	SNOHOMISH	Snohomish County Court	FAXED	2/10/2016	0	0	22	.
WSH	4285	KING	King County Court	FAXED	2/11/2016	0	0	.	49
WSH	4310	KING	King District Court (D)	FAXED	2/16/2016	0	0	15	.
WSH	4311	KING	Issaquah (M)	FAXED	2/16/2016	2	2	29	.
WSH	4320	PIERCE	FELONY CLASS C	BED OFFERED	2/17/2016	1	1	16	.
WSH	4321	PIERCE	Pierce County Court	FAXED	2/17/2016	2	2	40	.
WSH	4322	CLARK	Clark County Court	FAXED	2/17/2016	0	0	15	.
WSH	4331	KITSAP	Kitsap County Court	FAXED	2/18/2016	0	0	12	.
WSH	4332	KING	Seattle (M)	FAXED	2/18/2016	0	0	13	.
WSH	4333	KING	King County Court	FAXED	2/18/2016	1	1	22	.
WSH	4334	KING	FELONY CLASS A	BED OFFERED	2/18/2016	0	0	21	.
WSH	4345	KING	Seattle (M)	FAXED	2/22/2016	0	0	11	.
WSH	4346	KING	Seattle (M)	FAXED	2/22/2016	0	0	14	.
WSH	4347	KING	King County Court	FAXED	2/22/2016	0	0	15	.
WSH	4348	MASON	Mason County Court	FAXED	2/22/2016	2	2	14	.
WSH	4349	KING	Lake Forest Pk (M)	FAXED	2/22/2016	1	1	16	.

WSH	4354	PIERCE	Tacoma (M)	FAXED	2/23/2016	1	0	7	.
WSH	4355	KING	Seattle (M)	TIC	2/23/2016	0	0	8	.
WSH	4356	KING	Seattle (M)	FAXED	2/23/2016	0	0	13	.
WSH	4359	THURSTON	Thurston County Court	FAXED	2/24/2016	1	1	6	.
WSH	4360	THURSTON	Thurston County Court	FAXED	2/24/2016	0	0	6	.
WSH	4361	KING	Kent (M)	FAXED	2/24/2016	0	0	6	.
WSH	4362	KING	Seattle (M)	FAXED	2/24/2016	0	0	7	.
WSH	4363	KING	MISDEMEANOR	BED OFFERED	2/24/2016	1	1	12	.
WSH	4364	THURSTON	Thurston (D)	FAXED	2/24/2016	0	0	7	.
WSH	4365	KING	Seattle (M)	FAXED	2/24/2016	0	0	20	.
WSH	4366	MASON	Mason County Court	FAXED	2/24/2016	2	2	12	.
WSH	4367	KING	Bothell (M)	FAXED	2/24/2016	0	0	16	.
WSH	4368	KING	King District Court (D)	FAXED	2/24/2016	1	1	14	.
WSH	4369	KITSAP	Bremerton (M)	FAXED	2/24/2016	2	2	8	.
WSH	4370	KING	Seattle (M)	FAXED	2/24/2016	0	0	8	.
WSH	4371	KING	FELONY CLASS C	BED OFFERED	2/24/2016	1	1	14	.
WSH	4372	SNOHOMISH	Snohomish County Court	FAXED	2/25/2016	1	1	8	.
WSH	4373	KING	Seattle (M)	WITHDRAWN	2/25/2016	0	0	18	.
WSH	4374	LEWIS	Lewis County Court	FAXED	2/25/2016	4	4	8	.
WSH	4375	SNOHOMISH	Snohomish County Court	FAXED	2/25/2016	5	5	15	.
WSH	4376	KITSAP	Kitsap County Court	FAXED	2/25/2016	0	0	6	.
WSH	4377	KING	King County Court	FAXED	2/25/2016	0	0	15	.
WSH	4378	KING	King District Court (D)	EVAL CLOSED	2/25/2016	0	0	28	.
WSH	4379	GRAYS HARBOR	Aberdeen (M)	FAXED	2/25/2016	0	0	11	.

WSH	4380	KING	King County Court	FAXED	2/25/2016	0	0	15	.
WSH	4381	PIERCE	FELONY CLASS C	BED OFFERED	2/25/2016	0	0	15	.
WSH	4382	SNOHOMISH	Snohomish County Court	FAXED	2/25/2016	1	1	13	.
WSH	4383	LEWIS	Lewis County Court	FAXED	2/25/2016	4	4	12	.
WSH	4385	THURSTON	Thurston County Court	FAXED	2/25/2016	4	4	7	.
WSH	4386	PIERCE	Tacoma (M)	FAXED	2/26/2016	0	0	4	.
WSH	4387	KING	KIRKLAND (M)	FAXED	2/26/2016	0	0	4	.
WSH	4388	CLARK	Clark (D)	FAXED	2/26/2016	0	0	5	.
WSH	4389	CLARK	Clark (D)	FAXED	2/26/2016	0	0	5	.
WSH	4390	SNOHOMISH	Snohomish County Court	FAXED	2/26/2016	0	0	7	.
WSH	4391	SNOHOMISH	Marysville (M)	FAXED	2/26/2016	0	0	5	.
WSH	4392	KING	King District Court (D)	FAXED	2/26/2016	0	0	6	.
WSH	4393	CLARK	Clark (D)	FAXED	2/26/2016	0	0	7	.
WSH	4395	KING	Seattle (M)	FAXED	2/29/2016	0	0	24	.
WSH	4396	GRAYS HARBOR	Grays Harbor County Court	FAXED	2/29/2016	1	1	8	.
WSH	4397	ISLAND	Island County Court	FAXED	2/29/2016	1	1	24	.
WSH	4398	KING	SeaTac (M)	FAXED	2/29/2016	0	0	4	.
WSH	4399	KING	KING DISTRICT EAST DIV	FAXED	2/29/2016	0	0	9	.
WSH	4400	KING	King County Court	FAXED	2/29/2016	1	1	11	.
WSH	4401	THURSTON	Olympia (M)	FAXED	2/29/2016	2	2	9	.
WSH	4402	KITSAP	Bremerton (M)	FAXED	2/29/2016	0	0	4	.
WSH	4403	KING	King County Court	FAXED	2/29/2016	0	0	14	.
WSH	4527	KITSAP	FELONY CLASS C	BED OFFERED	2/16/2016	14	14	22	.
WSH	4528	SKAGIT	Mount Vernon (M)	FAXED	2/16/2016	17	17	36	.
WSH	4529	KING	FELONY CLASS B	BED OFFERED	2/23/2016	8	8	28	.

WSH	4530	KING	MISDEMEANOR	CANCELLED	2/25/2016	5	5	28	.
WSH	4544	THURSTON	Thurston County Court	FAXED	2/10/2016	51	51	.	50
WSH	4549	KING	Seattle (M)	FAXED	3/1/2016	0	0	7	.
WSH	4550	PIERCE	Lakewood (M)	FAXED	3/1/2016	1	1	7	.
WSH	4551	KING	King County Court	FAXED	3/1/2016	0	0	8	.
WSH	4552	THURSTON	Thurston County Court	FAXED	3/1/2016	3	3	29	.
WSH	4553	SNOHOMISH	Everett (D)	FAXED	3/2/2016	0	0	2	.
WSH	4554	KITSAP	Kitsap County Court	FAXED	3/2/2016	0	0	5	.
WSH	4555	THURSTON	Thurston (D)	FAXED	3/2/2016	1	1	5	.
WSH	4556	PIERCE	Tacoma (M)	FAXED	3/2/2016	0	0	6	.
WSH	4557	SNOHOMISH	Snohomish County Court	FAXED	3/2/2016	0	0	6	.
WSH	4558	SNOHOMISH	Edmonds (M)	WITHDRAWN	3/2/2016	1	1	6	.
WSH	4559	PIERCE	Tacoma (M)	FAXED	3/2/2016	0	0	6	.
WSH	4560	PIERCE	Lakewood (M)	FAXED	3/2/2016	0	0	6	.
WSH	4561	PIERCE	Tacoma (M)	FAXED	3/2/2016	0	0	7	.
WSH	4562	SNOHOMISH	Snohomish County Court	FAXED	3/2/2016	0	1	7	.
WSH	4563	SNOHOMISH	Snohomish County Court	FAXED	3/2/2016	1	1	7	.
WSH	4564	KING	Seattle (M)	FAXED	3/2/2016	0	0	7	.
WSH	4565	KING	Seattle (M)	FAXED	3/2/2016	0	0	7	.
WSH	4566	KING	Kent (M)	FAXED	3/2/2016	0	0	9	.
WSH	4567	SNOHOMISH	Marysville (M)	FAXED	3/2/2016	1	1	9	.
WSH	4568	KING	Seattle (M)	FAXED	3/2/2016	0	0	9	.
WSH	4569	KING	King County Court	FAXED	3/2/2016	0	0	12	.
WSH	4570	CLARK	Clark County Court	FAXED	3/2/2016	0	0	14	.
WSH	4571	PIERCE	Tacoma (M)	WITHDRAWN	3/3/2016	0	0	1	.
WSH	4572	KITSAP	Bremerton (M)	FAXED	3/3/2016	0	0	4	.

WSH	4573	KING	Renton (M)	FAXED	3/3/2016	0	0	4	.
WSH	4574	SNOHOMISH	Snohomish County Court	FAXED	3/3/2016	0	0	5	.
WSH	4575	CLARK	Clark County Court	FAXED	3/3/2016	0	0	6	.
WSH	4576	CLARK	Clark County Court	FAXED	3/3/2016	0	0	6	.
WSH	4577	CLARK	Clark (D)	FAXED	3/3/2016	1	1	6	.
WSH	4578	MASON	Mason (D)	FAXED	3/3/2016	0	0	7	.
WSH	4579	WHATCOM	FELONY CLASS B	BED OFFERED	3/3/2016	1	1	19	.
WSH	4580	KING	King County Court	FAXED	3/3/2016	0	0	12	.
WSH	4580	KING	Seattle (M)	FAXED	3/3/2016	0	0	12	.
WSH	4582	WHATCOM	Whatcom County Court	FAXED	3/3/2016	0	0	13	.
WSH	4583	WHATCOM	Whatcom County Court	FAXED	3/3/2016	0	0	14	.
WSH	4584	KING	King County Court	FAXED	3/3/2016	0	0	15	.
WSH	4585	KING	King County Court	FAXED	3/3/2016	0	0	18	.
WSH	4586	KING	King County Court	FAXED	3/3/2016	0	0	22	.
WSH	4587	KING	King District Court (D)	FAXED	3/4/2016	0	0	4	.
WSH	4588	KING	Seattle (M)	FAXED	3/4/2016	0	0	5	.
WSH	4589	KING	Kent (M)	FAXED	3/4/2016	3	3	6	.
WSH	4590	KING	Seattle (M)	FAXED	3/4/2016	0	0	6	.
WSH	4591	KING	Seattle (M)	FAXED	3/4/2016	0	0	6	.
WSH	4592	THURSTON	Olympia (M)	FAXED	3/4/2016	0	0	7	.
WSH	4593	KING	KING DISTRICT EAST DIV	FAXED	3/4/2016	0	0	12	.
WSH	4594	KING	Seattle (M)	FAXED	3/4/2016	0	0	14	.
WSH	4595	KING	Seattle (M)	WITHDRAWN	3/5/2016	0	0	3	.
WSH	4596	LEWIS	Lewis County Court	EVAL CLOSED	3/7/2016	0	0	2	.
WSH	4597	KING	King District Court (D)	FAXED	3/7/2016	0	0	3	.
WSH	4598	PIERCE	Tacoma (M)	FAXED	3/7/2016	0	0	4	.

WSH	4599	KING	Seattle (M)	WITHDRAWN	3/7/2016	0	0	7	.
WSH	4600	COWLITZ	Kelso (M)	FAXED	3/7/2016	0	2	7	.
WSH	4601	KING	Seattle (M)	CRIC	3/7/2016	0	0	9	.
WSH	4602	KING	Seattle (M)	FAXED	3/7/2016	0	0	9	.
WSH	4603	SNOHOMISH	Lynnwood (M)	FAXED	3/7/2016	0	0	9	.
WSH	4604	KING	King County Court	FAXED	3/7/2016	0	0	9	.
WSH	4605	KING	Seattle (M)	TIC	3/7/2016	0	0	10	.
WSH	4606	KING	Seattle (M)	FAXED	3/7/2016	0	0	13	.
WSH	4607	KING	Seattle (M)	FAXED	3/7/2016	0	0	15	.
WSH	4608	KING	Seattle (M)	FAXED	3/7/2016	0	0	18	.
WSH	4609	SNOHOMISH	Snohomish County Court	FAXED	3/8/2016	1	1	1	.
WSH	4610	CLARK	Clark (D)	FAXED	3/8/2016	1	1	3	.
WSH	4611	KITSAP	Bainbridge Island (M)	FAXED	3/8/2016	0	0	3	.
WSH	4612	KING	FELONY CLASS C	BED OFFERED	3/8/2016	0	0	10	.
WSH	4613	KING	FELONY CLASS C	BED OFFERED	3/8/2016	0	0	10	.
WSH	4614	CLARK	Clark County Court	FAXED	3/8/2016	0	0	6	.
WSH	4615	SNOHOMISH	Everett (M)	WITHDRAWN	3/8/2016	0	0	6	.
WSH	4616	CLALLAM	Clallam County Court	FAXED	3/8/2016	0	0	7	.
WSH	4617	CLARK	Clark (D)	FAXED	3/8/2016	1	1	7	.
WSH	4618	SNOHOMISH	Edmonds (M)	FAXED	3/8/2016	0	0	7	.
WSH	4619	PIERCE	FELONY CLASS C	BED OFFERED	3/8/2016	1	1	16	.
WSH	4620	CLARK	Clark County Court	FAXED	3/8/2016	0	0	7	.
WSH	4621	SNOHOMISH	Everett (M)	FAXED	3/8/2016	1	1	9	.
WSH	4622	THURSTON	Thurston (D)	WITHDRAWN	3/8/2016	0	0	9	.
WSH	4623	SNOHOMISH	Everett (M)	FAXED	3/8/2016	0	0	13	.
WSH	4624	KING	KIRKLAND (M)	WITHDRAWN	3/9/2016	0	0	22	.
WSH	4625	KING	Seattle (M)	WITHDRAWN	3/9/2016	0	0	5	.
WSH	4626	KING	KIRKLAND (M)	FAXED	3/9/2016	0	0	5	.
WSH	4627	PIERCE	Tacoma (M)	FAXED	3/9/2016	0	0	6	.

WSH	4628	KING	Renton (M)	TIC	3/9/2016	0	0	6	.
WSH	4629	PIERCE	Tacoma (M)	FAXED	3/9/2016	0	0	6	.
WSH	4630	PIERCE	Tacoma (M)	FAXED	3/9/2016	0	0	6	.
WSH	4631	KING	Seattle (M)	FAXED	3/9/2016	2	2	7	.
WSH	4632	KING	Seattle (M)	FAXED	3/9/2016	0	0	7	.
WSH	4633	SNOHOMISH	Edmonds (M)	FAXED	3/9/2016	0	0	9	.
WSH	4634	KING	Seattle (M)	FAXED	3/9/2016	0	0	12	.
WSH	4635	KING	King County Court	FAXED	3/9/2016	0	0	13	.
WSH	4636	SKAGIT	Skagit (D)	FAXED	3/9/2016	0	0	15	.
WSH	4637	KING	King County Court	FAXED	3/9/2016	0	0	20	.
WSH	4638	KING	Seattle (M)	FAXED	3/10/2016	0	0	21	.
WSH	4639	KITSAP	Kitsap County Court	FAXED	3/10/2016	0	0	4	.
WSH	4640	MASON	Mason (D)	EVAL CLOSED	3/10/2016	1	1	4	.
WSH	4641	KING	FELONY CLASS A	BED OFFERED	3/10/2016	0	0	13	.
WSH	4642	KING	Seattle (M)	FAXED	3/10/2016	1	1	7	.
WSH	4643	KING	King County Court	WITHDRAWN	3/10/2016	0	0	7	.
WSH	4644	PIERCE	Pierce County Court	FAXED	3/10/2016	0	0	8	.
WSH	4645	SKAGIT	Skagit County Court	FAXED	3/10/2016	1	1	13	.
WSH	4646	KING	King County Court	FAXED	3/10/2016	0	0	.	21
WSH	4647	KING	Renton (M)	FAXED	3/11/2016	0	0	4	.
WSH	4648	LEWIS	Lewis (D)	WITHDRAWN	3/11/2016	0	0	5	.
WSH	4649	KING	King District Court (D)	FAXED	3/11/2016	0	0	6	.
WSH	4650	SNOHOMISH	Marysville (M)	FAXED	3/11/2016	0	0	13	.
WSH	4651	THURSTON	Thurston County Court	TIC	3/14/2016	3	3	16	.
WSH	4652	KING	Maple Valley (M)	FAXED	3/14/2016	1	1	2	.
WSH	4653	PIERCE	Tacoma (M)	FAXED	3/14/2016	0	0	3	.
WSH	4654	KING	Renton (M)	FAXED	3/14/2016	0	0	4	.

WSH	4655	KING	King County Court	FAXED	3/14/2016	0	0	16	.
WSH	4656	KING	KIRKLAND (M)	FAXED	3/14/2016	1	1	7	.
WSH	4657	CLALLAM	Clallam 2 (D)	FAXED	3/14/2016	1	1	8	.
WSH	4658	KING	Seattle (M)	CRIC	3/14/2016	0	0	8	.
WSH	4659	GRAYS HARBOR	Grays Harbor County Court	FAXED	3/14/2016	2	7	8	.
WSH	4660	CLALLAM	Clallam 2 (D)	FAXED	3/14/2016	2	2	9	.
WSH	4661	KING	Seattle (M)	FAXED	3/14/2016	0	0	10	.
WSH	4662	THURSTON	FELONY CLASS A	CANCELLED	3/14/2016	16	16	.	17
WSH	4663	CLALLAM	MISDEMEANOR	BED OFFERED	3/14/2016	0	0	11	.
WSH	4664	KING	Seattle (M)	FAXED	3/15/2016	0	0	16	.
WSH	4665	KING	King District Court (D)	FAXED	3/15/2016	0	0	14	.
WSH	4666	SNOHOMISH	Marysville (M)	FAXED	3/15/2016	0	0	6	.
WSH	4667	THURSTON	Thurston County Court	FAXED	3/15/2016	0	0	6	.
WSH	4668	CLARK	Clark County Court	FAXED	3/15/2016	2	2	7	.
WSH	4669	KING	Seattle (M)	FAXED	3/16/2016	0	0	15	.
WSH	4670	KING	MISDEMEANOR	BED OFFERED	3/16/2016	1	1	14	.
WSH	4671	CLARK	Clark County Court	FAXED	3/16/2016	0	0	1	.
WSH	4672	PIERCE	Tacoma (M)	FAXED	3/16/2016	0	0	5	.
WSH	4673	KING	Tukwila (M)	FAXED	3/16/2016	1	1	6	.
WSH	4674	KING	Federal Way (M)	FAXED	3/16/2016	1	1	7	.
WSH	4675	PACIFIC	Pacific County Court	FAXED	3/16/2016	0	0	7	.
WSH	4676	CLARK	Clark (D)	FAXED	3/16/2016	0	0	7	.
WSH	4677	KING	Seattle (M)	FAXED	3/16/2016	0	0	9	.
WSH	4678	KING	King County Court	FAXED	3/17/2016	1	1	14	.
WSH	4679	KING	King County Court	FAXED	3/17/2016	0	0	12	.
WSH	4680	KING	FELONY CLASS B	BED OFFERED	3/17/2016	0	0	0	.
WSH	4681	KING	King District Court (D)	FAXED	3/17/2016	1	1	6	.

WSH	4682	KITSAP	Bremerton (M)	FAXED	3/17/2016	0	0	6	.
WSH	4683	KING	Bellevue (D)	FAXED	3/17/2016	0	0	7	.
WSH	4684	SNOHOMISH	Everett (M)	FAXED	3/17/2016	0	0	7	.
WSH	4685	WHATCOM	Whatcom County Court	FAXED	3/17/2016	0	0	11	.
WSH	4686	WHATCOM	Whatcom County Court	FAXED	3/17/2016	0	0	.	14
WSH	4687	WHATCOM	Bellingham (M)	FAXED	3/17/2016	4	4	.	14
WSH	4688	KING	MISDEMEANOR	BED OFFERED	3/18/2016	3	3	13	.
WSH	4689	WHATCOM	Bellingham (M)	FAXED	3/18/2016	0	0	11	.
WSH	4690	THURSTON	Thurston (D)	FAXED	3/18/2016	0	0	4	.
WSH	4691	KING	Seattle (M)	FAXED	3/18/2016	0	0	5	.
WSH	4692	PACIFIC	Pacific County Court	FAXED	3/18/2016	3	3	5	.
WSH	4693	CLARK	Clark (D)	FAXED	3/18/2016	0	0	6	.
WSH	4694	SNOHOMISH	Everett (M)	FAXED	3/18/2016	0	0	6	.
WSH	4695	CLARK	Clark County Court	TIC	3/18/2016	0	0	6	.
WSH	4696	KING	Kent (M)	FAXED	3/18/2016	3	3	6	.
WSH	4697	CLARK	Clark (D)	FAXED	3/18/2016	0	0	.	13
WSH	4698	SNOHOMISH	Everett (M)	FAXED	3/18/2016	0	0	7	.
WSH	4699	PIERCE	Tacoma (M)	FAXED	3/21/2016	0	0	3	.
WSH	4700	KING	King District Court (D)	FAXED	3/21/2016	1	1	3	.
WSH	4701	KING	Seattle (M)	TIC	3/21/2016	0	0	3	.
WSH	4702	KING	King County Court	WITHDRAWN	3/21/2016	0	0	8	.
WSH	4703	KITSAP	Bremerton (M)	FAXED	3/21/2016	0	0	8	.
WSH	4704	PIERCE	Tacoma (M)	FAXED	3/21/2016	1	1	7	.
WSH	4705	KING	Seattle (M)	FAXED	3/21/2016	1	1	7	.
WSH	4706	KING	MISDEMEANOR	BED OFFERED	3/21/2016	0	0	.	10
WSH	4707	KING	King County Court	FAXED	3/21/2016	0	0	.	10
WSH	4708	KING	King District Court (D)	FAXED	3/21/2016	0	0	.	10

WSH	4709	KING	King County Court	FAXED	3/21/2016	0	0	.	10
WSH	4710	KING	Renton (M)	FAXED	3/21/2016	0	0	4	.
WSH	4711	PIERCE	Tacoma (M)	FAXED	3/21/2016	0	0	4	.
WSH	4712	PIERCE	Tacoma (M)	FAXED	3/22/2016	0	0	7	.
WSH	4713	PIERCE	FELONY CLASS B	BED OFFERED	3/22/2016	0	0	0	.
WSH	4714	PIERCE	Pierce County Court	FAXED	3/22/2016	0	6	6	.
WSH	4715	KING	MISDEMEANOR	BED OFFERED	3/22/2016	0	0	.	9
WSH	4716	KING	FELONY CLASS B	BED OFFERED	3/22/2016	0	0	.	9
WSH	4717	KING	King District Court (D)	FAXED	3/22/2016	1	1	.	9
WSH	4718	KING	Federal Way (M)	FAXED	3/22/2016	1	1	6	.
WSH	4719	PIERCE	Tacoma (M)	FAXED	3/22/2016	0	0	6	.
WSH	4720	PIERCE	Seattle (M)	WITHDRAWN	3/23/2016	0	0	8	.
WSH	4721	KING	Seattle (M)	FAXED	3/23/2016	0	0	7	.
WSH	4722	KING	King County Court	FAXED	3/23/2016	0	0	7	.
WSH	4723	WHATCOM	Bellingham (M)	FAXED	3/23/2016	0	0	6	.
WSH	4724	KING	Seattle (M)	FAXED	3/23/2016	0	0	.	8
WSH	4725	KING	King County Court	FAXED	3/23/2016	0	0	.	8
WSH	4726	KING	King County Court	FAXED	3/23/2016	0	0	.	8
WSH	4727	SNOHOMISH	Snohomish County Court	FAXED	3/24/2016	0	0	7	.
WSH	4728	GRAYS HARBOR	Grays Harbor 1 (D)	FAXED	3/24/2016	0	0	7	.
WSH	4729	THURSTON	Thurston County Court	FAXED	3/24/2016	0	0	6	.
WSH	4730	KING	Seattle (M)	WITHDRAWN	3/24/2016	0	0	6	.
WSH	4731	GRAYS HARBOR	Aberdeen (M)	FAXED	3/24/2016	0	0	6	.
WSH	4732	GRAYS HARBOR	Aberdeen (M)	FAXED	3/24/2016	0	0	6	.
WSH	4733	GRAYS HARBOR	Grays Harbor 1 (D)	FAXED	3/24/2016	0	0	6	.

WSH	4734	CLARK	Clark (D)	FAXED	3/24/2016	0	0	5	.
WSH	4735	KING	Renton (M)	FAXED	3/24/2016	0	0	5	.
WSH	4736	WHATCOM	Whatcom County Court	FAXED	3/24/2016	0	0	.	7
WSH	4737	PIERCE	FELONY CLASS B	BED OFFERED	3/24/2016	1	1	.	7
WSH	4738	KING	King District Court (D)	FAXED	3/24/2016	0	0	4	.
WSH	4739	KING	Seattle (M)	FAXED	3/25/2016	0	0	6	.
WSH	4740	PIERCE	Lakewood (M)	FAXED	3/25/2016	0	0	5	.
WSH	4741	KING	King District Court (D)	FAXED	3/25/2016	0	0	5	.
WSH	4742	KING	Renton (M)	FAXED	3/25/2016	0	0	5	.
WSH	4743	PACIFIC	Pacific County Court	WITHDRAWN	3/25/2016	3	3	5	.
WSH	4744	SNOHOMISH	Snohomish County Court	WITHDRAWN	3/25/2016	0	0	3	.
WSH	4745	CLARK	Clark County Court	FAXED	3/25/2016	0	0	.	6
WSH	4746	PIERCE	Tacoma (M)	FAXED	3/25/2016	0	0	.	6
WSH	4747	SNOHOMISH	Snohomish County Court	FAXED	3/25/2016	3	3	.	6
WSH	4748	KING	King County Court	WITHDRAWN	3/28/2016	0	0	3	.
WSH	4749	PIERCE	Puyallup (M)	FAXED	3/28/2016	0	1	3	.
WSH	4750	GRAYS HARBOR	Grays Harbor County Court	FAXED	3/28/2016	0	0	3	.
WSH	4751	KING	King District Court (D)	FAXED	3/28/2016	0	0	.	3
WSH	4752	KING	Seattle (M)	FAXED	3/28/2016	0	0	.	3
WSH	4753	KING	Seattle (M)	FAXED	3/28/2016	0	0	.	3
WSH	4754	CLARK	FELONY CLASS A	BED OFFERED	3/28/2016	0	0	.	3
WSH	4755	KING	King District Court (D)	FAXED	3/28/2016	0	0	.	3
WSH	4756	KING	Federal Way (M)	FAXED	3/28/2016	0	0	.	3

WSH	4757	KING	KING DISTRICT EAST DIV	FAXED	3/28/2016	0	0	.	3
WSH	4758	KING	FELONY CLASS A	BED OFFERED	3/28/2016	0	0	.	3
WSH	4759	CLARK	Clark (D)	FAXED	3/28/2016	1	1	.	3
WSH	4760	CLARK	Clark (D)	FAXED	3/28/2016	1	1	.	3
WSH	4761	KING	King County Court	WITHDRAWN	3/28/2016	1	1	.	3
WSH	4762	KING	KING DISTRICT EAST DIV	FAXED	3/28/2016	1	.	.	3
WSH	4763	THURSTON	FELONY CLASS A	BED OFFERED	3/28/2016	2	2	.	3
WSH	4764	KING	King County Court	FAXED	3/29/2016	0	0	.	2
WSH	4765	KING	King County Court	FAXED	3/29/2016	0	0	.	2
WSH	4766	KING	Seattle (M)	FAXED	3/29/2016	0	0	.	2
WSH	4767	PIERCE	Tacoma (M)	FAXED	3/29/2016	0	0	.	2
WSH	4768	KING	Renton (M)	FAXED	3/29/2016	0	0	.	2
WSH	4769	KING	King County Court	FAXED	3/29/2016	0	0	.	2
WSH	4770	THURSTON	Thurston County Court	FAXED	3/29/2016	1	1	2	.
WSH	4771	PIERCE	Lakewood (M)	FAXED	3/30/2016	0	0	.	1
WSH	4772	CLARK	Clark County Court	FAXED	3/30/2016	0	0	.	1
WSH	4773	SNOHOMISH	Monroe (M)	FAXED	3/30/2016	0	0	.	1
WSH	4774	KING	King County Court	TIC	3/30/2016	0	0	.	1
WSH	4775	PIERCE	Tacoma (M)	FAXED	3/30/2016	0	0	.	1
WSH	4776	KING	King County Court	TIC	3/30/2016	0	0	.	1
WSH	4777	KING	Seattle (M)	FAXED	3/30/2016	0	0	.	1
WSH	4778	THURSTON	Thurston County Court	FAXED	3/30/2016	1	1	.	1
WSH	4779	KING	Des Moines (M)	FAXED	3/30/2016	5	5	.	1
WSH	4780	KITSAP	Kitsap County Court	FAXED	3/31/2016	0	0	.	0
WSH	4781	KING	King County Court	FAXED	3/31/2016	0	0	.	0

WSH	4782	KING	Seattle (M)	FAXED	3/31/2016	0	0	.	0
WSH	4783	KITSAP	Kitsap County Court	FAXED	3/31/2016	0	0	.	0
WSH	4784	KING	King County Court	FAXED	3/31/2016	0	0	.	0
WSH	4785	CLALLAM	Clallam County Court	FAXED	3/31/2016	4	4	.	0
WSH	4786	PIERCE	Pierce 1 (D)	FAXED	3/31/2016	1	4	.	0
WSH	4966	SNOHOMISH	Snohomish County Court	FAXED	2/25/2016	0	0	.	35
WSH	4967	KING	Seattle (M)	TIC	3/12/2016	2	2	19	.
WSH	4968	JEFFERSON	Jefferson County Court	FAXED	3/25/2016	11	11	.	6
WSH	4969	KING	MISDEMEANOR	INCOMPLETE	3/28/2016	2	2	.	3
WSH	4970	KING	FELONY CLASS C	BED OFFERED	3/30/2016	0	0	.	1
WSH	4971	KING	FELONY CLASS C	BED OFFERED	3/31/2016	0	0	.	0
WSH	4972	KING	FELONY CLASS B	BED OFFERED	3/31/2016	0	0	.	0
ESH	4039	YAKIMA	MISDEMEANOR	FAX	1/6/2016	0	5	55	.
ESH	4052	YAKIMA	MISDEMEANOR	FAX	1/13/2016	0	2	48	.
ESH	4164	SPOKANE	FELONY	ADMISSION	1/29/2016	31	31	.	62
ESH	4409	OKANOGAN	FELONY	ADMISSION	2/2/2016	1	1	45	.
ESH	4427	YAKIMA	FELONY	FAX	2/18/2016	1	5	36	.
ESH	4430	FRANKLIN	MISDEMEANOR	FAX	2/22/2016	1	1	9	.
ESH	4433	YAKIMA	MISDEMEANOR	FAX	2/23/2016	0	0	7	.
ESH	4434	SPOKANE	FELONY	FAX	2/23/2016	2	2	15	.
ESH	4435	SPOKANE	FELONY	FAX	2/23/2016	2	2	13	.
ESH	4436	SPOKANE	MISDEMEANOR	FAX	2/23/2016	1	1	8	.
ESH	4437	SPOKANE	FELONY	FAX	2/25/2016	1	1	14	.
ESH	4535	SPOKANE	FELONY	ADMISSION	2/22/2016	1	1	35	.
ESH	4536	OKANOGAN	FELONY	FAX	2/29/2016	2	2	8	.
ESH	4538	SPOKANE	FELONY	FAX	2/29/2016	0	1	9	.
ESH	4787	SPOKANE	FELONY	ADMISSION	#####	103	103	144	.
ESH	4788	KITTITAS	FELONY	ADMISSION	1/8/2016	34	42	77	.

ESH	4789	SPOKANE	FELONY	ADMISSION	1/29/2016	0	0	45	.
ESH	4790	BENTON	MISDEMEANOR	FAX	2/10/2016	0	0	.	50
ESH	4791	SPOKANE	FELONY	ADMISSION	2/22/2016	1	1	35	.
ESH	4795	FRANKLIN	MISDEMEANOR	FAX	3/1/2016	0	0	3	.
ESH	4796	YAKIMA	FELONY	FAX	3/1/2016	0	1	10	.
ESH	4797	FRANKLIN	MISDEMEANOR	FAX	3/1/2016	0	0	30	.
ESH	4800	SPOKANE	FELONY	FAX	3/3/2016	4	4	7	.
ESH	4801	KITTITAS	FELONY	FAX	3/4/2016	3	3	11	.
ESH	4803	SPOKANE	FELONY	FAX	3/7/2016	1	1	8	.
ESH	4804	SPOKANE	FELONY	FAX	3/7/2016	0	0	11	.
ESH	4806	FRANKLIN	MISDEMEANOR	FAX	3/8/2016	0	0	10	.
ESH	4807	GRANT	FELONY	FAX	3/8/2016	3	3	10	.
ESH	4808	FRANKLIN	MISDEMEANOR	FAX	3/8/2016	0	0	13	.
ESH	4809	STEVENS	FELONY	FAX	3/8/2016	17	.	.	23
ESH	4810	SPOKANE	MISDEMEANOR	FAX	3/8/2016	16	16	.	23
ESH	4812	KLICKITAT	FELONY	FAX	3/9/2016	1	1	12	.
ESH	4813	SPOKANE	FELONY	FAX	3/9/2016	7	7	.	22
ESH	4814	FRANKLIN	FELONY	FAX	3/10/2016	0	0	11	.
ESH	4815	BENTON	FELONY	FAX	3/10/2016	0	.	11	.
ESH	4816	SPOKANE	FELONY	FAX	3/10/2016	1	1	13	.
ESH	4817	SPOKANE	FELONY	FAX	3/10/2016	0	0	15	.
ESH	4818	YAKIMA	MISDEMEANOR	FAX	3/11/2016	0	0	10	.
ESH	4820	ASOTIN	FELONY	FAX	3/14/2016	0	0	9	.
ESH	4821	OKANOGAN	FELONY	FAX	3/14/2016	1	1	10	.
ESH	4823	SPOKANE	FELONY	FAX	3/15/2016	1	1	9	.
ESH	4824	YAKIMA	FELONY	ADMISSION	3/15/2016	1	1	.	16
ESH	4825	FRANKLIN	MISDEMEANOR	FAX	3/15/2016	0	0	10	.
ESH	4827	KITTITAS	MISDEMEANOR	ADMISSION	3/16/2016	0	0	.	15
ESH	4828	FRANKLIN	MISDEMEANOR	FAX	3/16/2016	0	0	14	.
ESH	4829	BENTON	FELONY	FAX	3/16/2016	2	1	14	.
ESH	4830	STEVENS	MISDEMEANOR	FAX	3/16/2016	0	.	14	.

ESH	4831	SPOKANE	FELONY	FAX	3/16/2016	2	2	13	.
ESH	4832	SPOKANE	FELONY	FAX	3/16/2016	1	1	12	.
ESH	4833	BENTON	FELONY	FAX	3/16/2016	0	1	9	.
ESH	4834	YAKIMA	FELONY	FAX	3/16/2016	8	.	.	15
ESH	4835	BENTON	MISDEMEANOR	FAX	3/16/2016	0	0	.	15
ESH	4836	CHELAN	FELONY	FAX	3/17/2016	5	.	12	.
ESH	4837	SPOKANE	FELONY	FAX	3/17/2016	6	6	.	14
ESH	4838	OKANOGAN	FELONY	FAX	3/18/2016	3	0	12	.
ESH	4839	SPOKANE	FELONY	FAX	3/21/2016	0	0	10	.
ESH	4840	CHELAN	FELONY	FAX	3/21/2016	0	0	.	10
ESH	4841	KITTITAS	MISDEMEANOR	FAX	3/22/2016	1	.	9	.
ESH	4842	SPOKANE	MISDEMEANOR	FAX	3/22/2016	1	1	.	9
ESH	4844	STEVENS	FELONY	FAX	3/22/2016	1	1	.	9
ESH	4845	SPOKANE	FELONY	FAX	3/22/2016	0	1	3	.
ESH	4846	BENTON	MISDEMEANOR	FAX	3/23/2016	0	0	.	8
ESH	4847	YAKIMA	MISDEMEANOR	FAX	3/23/2016	1	1	.	8
ESH	4848	SPOKANE	FELONY	FAX	3/23/2016	0	0	.	8
ESH	4849	GRANT	MISDEMEANOR	FAX	3/23/2016	1	1	.	8
ESH	4850	CHELAN	MISDEMEANOR	FAX	3/23/2016	0	1	.	8
ESH	4851	SPOKANE	MISDEMEANOR	FAX	3/23/2016	7	7	.	8
ESH	4853	CHELAN	FELONY	FAX	3/24/2016	1	.	.	7
ESH	4854	GRANT	FELONY	FAX	3/24/2016	0	4	.	7
ESH	4855	SPOKANE	FELONY	FAX	3/24/2016	1	1	.	7
ESH	4857	OKANOGAN	MISDEMEANOR	FAX	3/28/2016	0	0	3	.
ESH	4860	GRANT	MISDEMEANOR	FAX	3/30/2016	.	.	.	1
ESH	4861	BENTON	MISDEMEANOR	FAX	3/31/2016	0	.	.	0
ESH	4862	SPOKANE	MISDEMEANOR	FAX	3/31/2016	0	0	.	0
ESH	4863	SPOKANE	MISDEMEANOR	FAX	3/31/2016	0	0	.	0
ESH	4864	YAKIMA	MISDEMEANOR	FAX	3/31/2016	0	0	.	0
ESH	4973	FRANKLIN	MISDEMEANOR	FAX	2/17/2016	0	0	13	.
ESH	4974	KLICKITAT	MISDEMEANOR	FAX	2/23/2016	0	1	15	.

ESH	4975	BENTON	FELONY	FAX	2/25/2016	0	0	6	.
ESH	4976	SPOKANE	FELONY	FAX	2/25/2016	1	1	7	.
ESH	4977	YAKIMA	FELONY	FAX	2/26/2016	0	0	7	.
ESH	4978	YAKIMA	FELONY	FAX	3/2/2016	1	1	.	29
ESH	4979	SPOKANE	FELONY	FAX	3/2/2016	2	2	8	.
ESH	4980	OKANOGAN	FELONY	FAX	3/7/2016	1	1	15	.
ESH	4981	OKANOGAN	FELONY	FAX	3/7/2016	1	1	24	.
ESH	4982	BENTON	MISDEMEANOR	FAX	3/9/2016	0	0	9	.
ESH	4983	SPOKANE	FELONY	FAX	3/14/2016	0	0	8	.
ESH	4984	ASOTIN	FELONY	ADMISSION	3/14/2016	0	0	.	17
ESH	4985	BENTON	FELONY	FAX	3/15/2016	0	0	10	.
ESH	4986	FRANKLIN	FELONY	ADMISSION	3/15/2016	1	.	.	16
ESH	4987	SPOKANE	FELONY	FAX	3/18/2016	7	3	.	13
ESH	4988	BENTON	FELONY	FAX	3/22/2016	0	0	.	9
ESH	4989	BENTON	MISDEMEANOR	FAX	3/23/2016	0	0	2	.
ESH	4990	SPOKANE	MISDEMEANOR	FAX	3/28/2016	.	.	.	3
ESH	4991	ADAMS	FELONY	ADMISSION	3/28/2016	0	0	.	3
ESH	4992	GRANT	FELONY	ADMISSION	3/29/2016	.	.	.	2

Appendix B: Class Member--Restoration Information for March 2016

Hospital	Class Member	County	Offense	Completion Method or Incomplete	Number of days from signed order to:				
					Order Signed Date	Order Received	Discovery Received	Complete	Incomplete End of Reporting Period
WSH	4085	KING	FELONY CLASS B	BED OFFERED	1/12/2016	1	1	49	.
WSH	4091	WHATCOM	FELONY CLASS C	BED OFFERED	1/14/2016	0	0	49	.
WSH	4096	SNOHOMISH	FELONY CLASS B	BED OFFERED	1/15/2016	0	0	47	.
WSH	4101	KING	FELONY CLASS A	BED OFFERED	1/19/2016	0	0	44	.

WSH	4109	KING	FELONY CLASS B	BED OFFERED	1/20/2016	0	0	54	.
WSH	4110	KING	FELONY CLASS C	BED OFFERED	1/20/2016	1	6	41	.
WSH	4111	WHATCOM	FELONY CLASS A	BED OFFERED	1/21/2016	6	6	56	.
WSH	4112	KING	FELONY CLASS B	BED OFFERED	1/21/2016	0	0	55	.
WSH	4113	PIERCE	FELONY CLASS C	BED OFFERED	1/22/2016	0	0	41	.
WSH	4114	KING	FELONY CLASS C	BED OFFERED	1/25/2016	0	0	43	.
WSH	4116	KING	FELONY CLASS B	BED OFFERED	1/25/2016	0	0	38	.
WSH	4119	KING	FELONY CLASS C	BED OFFERED	1/27/2016	0	0	50	.
WSH	4120	KING	FELONY CLASS C	BED OFFERED	1/27/2016	0	0	49	.
WSH	4121	KING	FELONY CLASS A	BED OFFERED	1/27/2016	0	0	56	.
WSH	4124	WHATCOM	FELONY CLASS B	BED OFFERED	1/28/2016	1	1	56	.
WSH	4125	MASON	FELONY CLASS B	BED OFFERED	1/28/2016	1	1	41	.
WSH	4171	THURSTON	FELONY CLASS C	BED OFFERED	1/19/2016	29	29	45	.
WSH	4172	LEWIS	FELONY CLASS C	BED OFFERED	1/25/2016	0	0	45	.
WSH	4173	THURSTON	FELONY CLASS B	BED OFFERED	1/25/2016	0	0	57	.
WSH	4174	CLARK	FELONY CLASS B	BED OFFERED	1/28/2016	4	4	57	.
WSH	4175	SNOHOMISH	FELONY CLASS A	BED OFFERED	1/29/2016	3	3	.	62
WSH	4176	PIERCE	FELONY CLASS C	BED OFFERED	1/29/2016	3	3	39	.
WSH	4443	KING	FELONY CLASS C	BED OFFERED	2/1/2016	0	0	51	.
WSH	4447	KING	FELONY CLASS C	BED OFFERED	2/3/2016	0	0	48	.
WSH	4449	KING	FELONY CLASS B	BED OFFERED	2/4/2016	0	0	.	56
WSH	4452	THURSTON	FELONY CLASS B	BED OFFERED	2/5/2016	4	4	55	.
WSH	4454	SNOHOMISH	FELONY CLASS B	BED OFFERED	2/5/2016	3	3	49	.
WSH	4455	SNOHOMISH	FELONY CLASS C	BED OFFERED	2/5/2016	3	3	52	.
WSH	4457	THURSTON	FELONY CLASS A	BED OFFERED	2/8/2016	0	0	.	52
WSH	4458	THURSTON	FELONY CLASS B	BED OFFERED	2/8/2016	1	1	.	52
WSH	4459	THURSTON	FELONY CLASS C	BED OFFERED	2/8/2016	0	0	.	52
WSH	4460	GRAYS HARBOR	FELONY CLASS A	BED OFFERED	2/8/2016	0	0	.	52
WSH	4461	CLARK	FELONY CLASS C	CANCELLED	2/9/2016	1	1	.	51
WSH	4462	CLARK	FELONY CLASS C	BED OFFERED	2/9/2016	1	1	.	51
WSH	4464	KING	FELONY CLASS C	BED OFFERED	2/9/2016	0	0	50	.

WSH	4465	KING	FELONY CLASS C	BED OFFERED	2/10/2016	0	0	50	.
WSH	4466	KING	FELONY CLASS C	BED OFFERED	2/10/2016	0	0	50	.
WSH	4467	KING	FELONY CLASS B	BED OFFERED	2/10/2016	0	0	.	50
WSH	4468	MASON	FELONY CLASS C	BED OFFERED	2/11/2016	1	1	.	49
WSH	4469	MASON	FELONY CLASS B	BED OFFERED	2/11/2016	0	0	.	49
WSH	4470	SNOHOMISH	FELONY CLASS C	BED OFFERED	2/12/2016	0	0	.	48
WSH	4471	KITSAP	MISDEMEANOR	BED OFFERED	2/12/2016	0	0	19	.
WSH	4472	ISLAND	FELONY CLASS C	BED OFFERED	2/16/2016	14	14	.	44
WSH	4474	KING	FELONY CLASS B	BED OFFERED	2/16/2016	0	0	.	44
WSH	4475	KING	MISDEMEANOR	BED OFFERED	2/16/2016	1	1	15	.
WSH	4476	PIERCE	FELONY CLASS B	BED OFFERED	2/17/2016	1	1	.	43
WSH	4477	KING	FELONY CLASS C	BED OFFERED	2/17/2016	1	1	.	43
WSH	4478	KING	FELONY CLASS B	BED OFFERED	2/17/2016	1	1	.	43
WSH	4479	WHATCOM	FELONY CLASS B	BED OFFERED	2/17/2016	1	1	.	43
WSH	4483	KITSAP	FELONY CLASS C	BED OFFERED	2/18/2016	4	4	.	42
WSH	4484	PACIFIC	FELONY CLASS C	BED OFFERED	2/19/2016	4	4	.	41
WSH	4486	CLARK	FELONY CLASS B	BED OFFERED	2/19/2016	3	3	.	41
WSH	4487	THURSTON	MISDEMEANOR	BED OFFERED	2/19/2016	3	3	21	.
WSH	4489	KING	FELONY CLASS C	BED OFFERED	2/22/2016	0	0	.	38
WSH	4490	KING	MISDEMEANOR	BED OFFERED	2/22/2016	1	1	21	.
WSH	4491	THURSTON	FELONY CLASS B	BED OFFERED	2/22/2016	0	0	.	38
WSH	4492	PIERCE	FELONY CLASS A	BED OFFERED	2/24/2016	1	1	.	36
WSH	4493	PIERCE	FELONY CLASS C	BED OFFERED	2/24/2016	2	2	.	36
WSH	4494	CLARK	FELONY CLASS A	BED OFFERED	2/24/2016	1	1	26	.
WSH	4495	SKAGIT	FELONY CLASS C	BED OFFERED	2/25/2016	0	0	.	35
WSH	4497	CLARK	FELONY CLASS C	BED OFFERED	2/25/2016	4	4	.	35
WSH	4498	CLARK	FELONY CLASS C	BED OFFERED	2/26/2016	3	3	7	.
WSH	4499	CLARK	FELONY CLASS B	BED OFFERED	2/26/2016	3	3	.	34
WSH	4500	KING	MISDEMEANOR	BED OFFERED	2/29/2016	1	1	10	.
WSH	4502	KING	MISDEMEANOR	BED OFFERED	2/29/2016	1	1	16	.
WSH	4503	KING	FELONY CLASS B	BED OFFERED	2/29/2016	1	1	.	31

WSH	4504	KING	FELONY CLASS B	BED OFFERED	2/29/2016	0	0	.	31
WSH	4539	THURSTON	FELONY CLASS B	BED OFFERED	12/10/2015	83	83	98	0
WSH	4540	PIERCE	FELONY CLASS C	BED OFFERED	1/5/2016	2	71	76	.
WSH	4541	SNOHOMISH	FELONY CLASS C	BED OFFERED	1/29/2016	39	39	52	.
WSH	4542	PIERCE	FELONY CLASS C	BED OFFERED	2/4/2016	0	0	53	.
WSH	4869	KING	FELONY CLASS C	BED OFFERED	3/1/2016	0	0	3	.
WSH	4870	PIERCE	FELONY CLASS C	BED OFFERED	3/1/2016	1	1	.	30
WSH	4871	KING	FELONY CLASS B	BED OFFERED	3/1/2016	0	0	.	30
WSH	4872	CLARK	FELONY CLASS B	BED OFFERED	3/2/2016	1	1	7	.
WSH	4873	PIERCE	FELONY CLASS B	BED OFFERED	3/2/2016	0	0	0	.
WSH	4874	KING	FELONY CLASS B	BED OFFERED	3/2/2016	1	1	5	.
WSH	4875	KING	FELONY CLASS B	BED OFFERED	3/2/2016	0	0	5	.
WSH	4876	KING	FELONY CLASS B	BED OFFERED	3/2/2016	0	0	.	29
WSH	4877	PIERCE	FELONY CLASS C	BED OFFERED	3/2/2016	1	1	.	29
WSH	4878	PIERCE	FELONY CLASS C	BED OFFERED	3/2/2016	0	0	0	.
WSH	4879	KING	MISDEMEANOR	BED OFFERED	3/3/2016	1	1	21	.
WSH	4880	PIERCE	FELONY CLASS A	BED OFFERED	3/3/2016	4	4	7	.
WSH	4881	CLARK	FELONY CLASS C	BED OFFERED	3/3/2016	1	1	15	.
WSH	4882	WHATCOM	FELONY CLASS B	BED OFFERED	3/3/2016	0	0	.	28
WSH	4883	GRAYS HARBOR	FELONY CLASS B	BED OFFERED	3/4/2016	0	0	.	27
WSH	4884	PIERCE	FELONY CLASS A	BED OFFERED	3/4/2016	5	12	.	27
WSH	4885	KITSAP	FELONY CLASS C	BED OFFERED	3/4/2016	0	0	.	27
WSH	4886	PIERCE	FELONY CLASS C	BED OFFERED	3/4/2016	5	6	.	27
WSH	4887	SNOHOMISH	FELONY CLASS C	BED OFFERED	3/4/2016	0	0	0	.
WSH	4888	THURSTON	FELONY CLASS B	BED OFFERED	3/7/2016	1	1	.	24
WSH	4889	KITSAP	MISDEMEANOR	BED OFFERED	3/8/2016	1	1	16	.
WSH	4890	KING	MISDEMEANOR	BED OFFERED	3/8/2016	0	0	21	.
WSH	4891	SNOHOMISH	FELONY CLASS C	BED OFFERED	3/8/2016	0	0	9	.
WSH	4892	MASON	FELONY CLASS B	BED OFFERED	3/8/2016	0	0	.	23
WSH	4893	SNOHOMISH	FELONY CLASS C	BED OFFERED	3/8/2016	0	0	8	.

WSH	4894	PIERCE	FELONY CLASS B	BED OFFERED	3/9/2016	1	1	.	22
WSH	4895	PIERCE	FELONY CLASS B	BED OFFERED	3/9/2016	1	1	.	22
WSH	4896	KING	MISDEMEANOR	CANCELLED	3/10/2016	1	1	15	.
WSH	4897	KING	MISDEMEANOR	CANCELLED	3/10/2016	0	0	19	.
WSH	4898	LEWIS	FELONY CLASS A	BED OFFERED	3/10/2016	1	1	.	21
WSH	4899	KING	FELONY CLASS B	BED OFFERED	3/10/2016	0	0	0	.
WSH	4900	LEWIS	FELONY CLASS C	BED OFFERED	3/11/2016	0	0	.	20
WSH	4901	PIERCE	MISDEMEANOR	BED OFFERED	3/14/2016	1	2	14	.
WSH	4902	THURSTON	FELONY CLASS B	BED OFFERED	3/14/2016	0	0	3	.
WSH	4903	KING	FELONY CLASS C	BED OFFERED	3/14/2016	0	0	.	17
WSH	4904	KING	FELONY CLASS B	BED OFFERED	3/15/2016	0	0	0	.
WSH	4905	PIERCE	FELONY CLASS C	BED OFFERED	3/16/2016	1	1	.	15
WSH	4906	KING	FELONY CLASS C	BED OFFERED	3/16/2016	0	0	.	15
WSH	4907	KING	FELONY CLASS A	INCOMPLETE	3/16/2016	0	0	.	15
WSH	4908	KING	MISDEMEANOR	INCOMPLETE	3/16/2016	0	0	.	15
WSH	4909	PIERCE	FELONY CLASS C	BED OFFERED	3/16/2016	14	15	.	15
WSH	4910	MASON	FELONY CLASS C	BED OFFERED	3/16/2016	0	0	2	.
WSH	4911	CLARK	FELONY CLASS C	BED OFFERED	3/17/2016	1	1	.	14
WSH	4912	KING	FELONY CLASS B	INCOMPLETE	3/17/2016	0	0	.	14
WSH	4913	LEWIS	FELONY CLASS A	INCOMPLETE	3/17/2016	0	0	.	14
WSH	4914	WHATCOM	FELONY CLASS B	INCOMPLETE	3/17/2016	0	0	.	14
WSH	4915	CLARK	FELONY CLASS A	INCOMPLETE	3/17/2016	1	1	.	14
WSH	4916	CLARK	FELONY CLASS C	BED OFFERED	3/18/2016	0	0	7	.
WSH	4917	PIERCE	MISDEMEANOR	BED OFFERED	3/18/2016	0	0	13	.
WSH	4918	CLARK	FELONY CLASS B	INCOMPLETE	3/18/2016	0	0	.	13
WSH	4919	KING	MISDEMEANOR	BED OFFERED	3/21/2016	1	1	.	10
WSH	4920	GRAYS HARBOR	FELONY CLASS C	INCOMPLETE	3/21/2016	1	1	.	10
WSH	4921	KING	MISDEMEANOR	BED OFFERED	3/21/2016	0	0	.	10
WSH	4922	KING	FELONY CLASS B	BED OFFERED	3/21/2016	0	0	0	.
WSH	4923	SNOHOMISH	FELONY CLASS A	CANCELLED	3/22/2016	1	1	6	.
WSH	4924	KING	FELONY CLASS B	BED OFFERED	3/22/2016	0	0	0	.

WSH	4925	KING	FELONY CLASS A	INCOMPLETE	3/22/2016	0	0	.	9
WSH	4926	KITSAP	FELONY CLASS C	INCOMPLETE	3/22/2016	0	0	.	9
WSH	4927	CLARK	FELONY CLASS C	INCOMPLETE	3/22/2016	0	0	.	9
WSH	4928	SNOHOMISH	FELONY CLASS B	BED OFFERED	3/22/2016	0	0	0	.
WSH	4929	KING	FELONY CLASS C	BED OFFERED	3/22/2016	0	0	0	.
WSH	4930	CLARK	FELONY CLASS C	INCOMPLETE	3/23/2016	0	0	.	8
WSH	4931	KING	MISDEMEANOR	BED OFFERED	3/23/2016	0	0	.	8
WSH	4932	KING	FELONY CLASS B	INCOMPLETE	3/23/2016	0	0	.	8
WSH	4933	WHATCOM	FELONY CLASS C	BED OFFERED	3/24/2016	0	0	5	.
WSH	4934	PIERCE	FELONY CLASS B	INCOMPLETE	3/24/2016	1	1	.	7
WSH	4935	PIERCE	MISDEMEANOR	BED OFFERED	3/25/2016	0	0	.	6
WSH	4936	KITSAP	MISDEMEANOR	BED OFFERED	3/25/2016	0	0	.	6
WSH	4937	KING	FELONY CLASS B	INCOMPLETE	3/28/2016	0	0	.	3
WSH	4938	THURSTON	FELONY CLASS C	INCOMPLETE	3/28/2016	1	1	.	3
WSH	4939	COWLITZ	FELONY CLASS B	INCOMPLETE	3/29/2016	1	1	.	2
WSH	4940	KING	MISDEMEANOR	BED OFFERED	3/29/2016	1	1	.	2
WSH	4941	CLARK	FELONY CLASS C	INCOMPLETE	3/29/2016	0	0	.	2
WSH	4942	KING	FELONY CLASS C	INCOMPLETE	3/30/2016	0	0	.	1
WSH	4943	PIERCE	MISDEMEANOR	BED OFFERED	3/30/2016	0	0	.	1
WSH	4944	PIERCE	FELONY CLASS C	INCOMPLETE	3/30/2016	0	0	.	1
WSH	4945	KING	FELONY CLASS A	BED OFFERED	3/31/2016	0	0	0	.
WSH	4993	SKAGIT	FELONY CLASS C	BED OFFERED	3/8/2016	31	31	.	23
WSH	4994	PACIFIC	FELONY CLASS C	INCOMPLETE	3/25/2016	4	17	.	6
WSH	4995	LEWIS	FELONY CLASS C	INCOMPLETE	3/31/2016	0	0	.	0
WSH	4996	WHATCOM	FELONY CLASS C	INCOMPLETE	3/31/2016	0	0	.	0
ESH	4131	GRANT	FELONY	ADMISSION	1/8/2016	3	3	55	.
ESH	4132	GRANT	FELONY	ADMISSION	1/12/2016	0	0	51	.
ESH	4134	OKANOGAN	FELONY	ADMISSION	1/20/2016	0	0	50	.
ESH	4136	BENTON	FELONY	ADMISSION	1/21/2016	0	0	41	.

ESH	4139	CHELAN	FELONY	ADMISSION	1/27/2016	1	1	49	.
ESH	4178	OKANOGAN	FELONY	ADMISSION	1/4/2016	11	11	66	.
ESH	4510	YAKIMA	FELONY	ADMISSION	2/1/2016	0	0	37	.
ESH	4515	ASOTIN	MISDEMEANOR	ADMISSION	2/5/2016	0	0	46	.
ESH	4521	CHELAN	MISDEMEANOR	ADMISSION	2/16/2016	0	0	43	.
ESH	4522	FRANKLIN	FELONY	ADMISSION	2/19/2016	0	0	.	41
ESH	4525	WALLA WALLA	FELONY	ADMISSION	2/26/2016	0	3	32	.
ESH	4526	YAKIMA	FELONY	ADMISSION	2/26/2016	3	0	.	34
ESH	4543	SPOKANE	FELONY	ADMISSION	2/12/2016	0	0	38	.
ESH	4946	BENTON	FELONY	ADMISSION	1/28/2016	1	1	48	.
ESH	4947	BENTON	FELONY	ADMISSION	2/4/2016	0	0	53	.
ESH	4948	YAKIMA	MISDEMEANOR	ADMISSION	2/5/2016	0	0	47	.
ESH	4949	CHELAN	MISDEMEANOR	ADMISSION	2/8/2016	2	2	44	.
ESH	4950	CHELAN	MISDEMEANOR	ADMISSION	2/9/2016	1	1	50	.
ESH	4951	SPOKANE	FELONY	ADMISSION	2/11/2016	0	1	39	.
ESH	4953	GRANT	FELONY	ADMISSION	2/22/2016	1	1	25	.
ESH	4954	SPOKANE	FELONY	ADMISSION	3/3/2016	0	0	.	28
ESH	4958	FRANKLIN	FELONY	ADMISSION	3/8/2016	0	0	.	23
ESH	4962	Klickitat	FELONY	ADMISSION	3/21/2016	3	3	.	10
ESH	4963	SPOKANE	FELONY	ADMISSION	3/22/2016	1	1	.	9
ESH	4997	YAKIMA	MISDEMEANOR	ADMISSION	2/23/2016	0	0	.	37
ESH	4998	SPOKANE	FELONY	ADMISSION	3/7/2016	0	1	.	24
ESH	4999	FRANKLIN	FELONY	ADMISSION	3/8/2016	0	0	.	23
ESH	5000	YAKIMA	MISDEMEANOR	ADMISSION	3/8/2016	0	0	.	23
ESH	5001	PEND OREILLE	FELONY	ADMISSION	3/10/2016	0	0	.	21
ESH	5002	YAKIMA	FELONY	ADMISSION	3/10/2016	1	1	.	21
ESH	5003	YAKIMA	FELONY	ADMISSION	3/13/2016	5	5	.	18
ESH	5004	Klickitat	MISDEMEANOR	ADMISSION	3/15/2016	3	3	.	16
ESH	5005	SPOKANE	FELONY	ADMISSION	3/16/2016	0	1	.	15
ESH	5006	YAKIMA	FELONY	ADMISSION	3/17/2016	0	4	.	14

ESH	5007	SPOKANE	FELONY	ADMISSION	3/23/2016	1	1	.	8
ESH	5008	FRANKLIN	MISDEMEANOR	ADMISSION	3/23/2016	2	2	.	8
ESH	5009	OKANOGAN	FELONY	ADMISSION	3/24/2016	1	1	.	7
ESH	5010	ASOTIN	FELONY	ADMISSION	3/24/2016	.	.	.	7
ESH	5011	BENTON	FELONY	ADMISSION	3/31/2016	0	0	.	0

Appendix C: Class Member-- Evaluation Information for April 2016

Hospital	Class Member	County	Offense	Completion Method or Incomplete	Order Signed Date	Number of days from signed order to:			
						Order Received	Discovery Received	Complete	Incomplete End of Reporting Period
WSH	4285	KING	FELONY	FAX	2/11/2016	0	0	55	.
WSH	4544	THURSTON	FELONY	FAX	2/10/2016	51	51	51	0
WSH	4646	KING	FELONY	FAX	3/10/2016	0	0	27	.
WSH	4662	THURSTON	FELONY CLASS A	CANCELLED	3/14/2016	16	16	39	.
WSH	4686	WHATCOM	FELONY	FAX	3/17/2016	0	0	16	.
WSH	4687	WHATCOM	MISDEMEANOR	FAX	3/17/2016	4	4	16	.
WSH	4697	CLARK	MISDEMEANOR	FAX	3/18/2016	0	0	14	.
WSH	4706	KING	MISDEMEANOR	BED OFFERED	3/21/2016	0	0	15	.
WSH	4707	KING	FELONY	FAX	3/21/2016	0	0	18	.
WSH	4708	KING	MISDEMEANOR	FAX	3/21/2016	0	0	18	.
WSH	4709	KING	FELONY	FAX	3/21/2016	0	0	23	.
WSH	4715	KING	MISDEMEANOR	BED OFFERED	3/22/2016	0	0	15	.
WSH	4716	KING	FELONY CLASS B	BED OFFERED	3/22/2016	0	0	15	.
WSH	4717	KING	MISDEMEANOR	FAX	3/22/2016	1	1	14	.
WSH	4724	KING	MISDEMEANOR	FAX	3/23/2016	0	0	9	.
WSH	4725	KING	FELONY	FAX	3/23/2016	0	0	20	.
WSH	4726	KING	FELONY	FAX	3/23/2016	0	0	14	.

WSH	4736	WHATCOM	FELONY	FAX	3/24/2016	0	0	8	.
WSH	4737	PIERCE	FELONY CLASS B	BED OFFERED	3/24/2016	1	1	18	.
WSH	4745	CLARK	FELONY	FAX	3/25/2016	0	0	7	.
WSH	4746	PIERCE	MISDEMEANOR	FAX	3/25/2016	0	0	7	.
WSH	4747	SNOHOMISH	FELONY	FAX	3/25/2016	3	3	7	.
WSH	4751	KING	MISDEMEANOR	FAX	3/28/2016	0	0	7	.
WSH	4752	KING	MISDEMEANOR	FAX	3/28/2016	0	0	4	.
WSH	4753	KING	MISDEMEANOR	FAX	3/28/2016	0	0	10	.
WSH	4754	CLARK	FELONY CLASS A	BED OFFERED	3/28/2016	0	0	15	.
WSH	4755	KING	MISDEMEANOR	FAX	3/28/2016	0	0	7	.
WSH	4756	KING	MISDEMEANOR	FAX	3/28/2016	0	0	15	.
WSH	4757	KING	MISDEMEANOR	FAX	3/28/2016	0	0	4	.
WSH	4758	KING	FELONY CLASS A	BED OFFERED	3/28/2016	0	0	15	.
WSH	4759	CLARK	MISDEMEANOR	FAX	3/28/2016	1	1	7	.
WSH	4760	CLARK	MISDEMEANOR	FAX	3/28/2016	1	1	4	.
WSH	4761	KING	FELONY	WITHDRAWN	3/28/2016	1	1	17	.
WSH	4762	KING	MISDEMEANOR	FAX	3/28/2016	1	.	7	.
WSH	4763	THURSTON	FELONY CLASS A	BED OFFERED	3/28/2016	2	2	22	.
WSH	4764	KING	FELONY	FAX	3/29/2016	0	0	10	.
WSH	4765	KING	FELONY	FAX	3/29/2016	0	0	15	.
WSH	4766	KING	MISDEMEANOR	FAX	3/29/2016	0	0	9	.
WSH	4767	PIERCE	MISDEMEANOR	FAX	3/29/2016	0	0	7	.
WSH	4768	KING	MISDEMEANOR	FAX	3/29/2016	0	0	8	.
WSH	4769	KING	FELONY	FAX	3/29/2016	0	0	21	.
WSH	4771	PIERCE	MISDEMEANOR	FAX	3/30/2016	0	0	5	.
WSH	4772	CLARK	FELONY	FAX	3/30/2016	0	0	6	.
WSH	4773	SNOHOMISH	MISDEMEANOR	FAX	3/30/2016	0	0	7	.
WSH	4774	KING	FELONY	TIC	3/30/2016	0	0	2	.
WSH	4775	PIERCE	MISDEMEANOR	FAX	3/30/2016	0	0	6	.
WSH	4776	KING	FELONY	TIC	3/30/2016	0	0	12	.
WSH	4777	KING	MISDEMEANOR	FAX	3/30/2016	0	0	16	.

WSH	4778	THURSTON	FELONY	FAX	3/30/2016	1	1	7	.
WSH	4779	KING	MISDEMEANOR	FAX	3/30/2016	5	5	5	.
WSH	4780	KITSAP	FELONY	FAX	3/31/2016	0	0	6	.
WSH	4781	KING	FELONY	FAX	3/31/2016	0	0	14	.
WSH	4782	KING	MISDEMEANOR	FAX	3/31/2016	0	0	6	.
WSH	4783	KITSAP	FELONY	FAX	3/31/2016	0	0	7	.
WSH	4784	KING	FELONY	FAX	3/31/2016	0	0	18	.
WSH	4785	CLALLAM	FELONY	FAX	3/31/2016	4	4	6	.
WSH	4786	PIERCE	MISDEMEANOR	FAX	3/31/2016	1	4	7	.
WSH	4966	SNOHOMISH	FELONY	FAX	2/25/2016	0	0	49	.
WSH	4968	JEFFERSON	FELONY	FAX	3/25/2016	11	11	18	.
WSH	4969	KING	MISDEMEANOR	BED OFFERED	3/28/2016	2	2	31	.
WSH	4970	KING	FELONY CLASS C	BED OFFERED	3/30/2016	0	0	19	.
WSH	4971	KING	FELONY CLASS C	BED OFFERED	3/31/2016	0	0	21	.
WSH	4972	KING	FELONY CLASS B	BED OFFERED	3/31/2016	0	0	21	.
WSH	5021	KING	MISDEMEANOR	WITHDRAWN	4/1/2016	0	0	3	.
WSH	5022	KING	MISDEMEANOR	FAX	4/1/2016	0	0	4	.
WSH	5023	KING	MISDEMEANOR	FAX	4/1/2016	3	3	5	.
WSH	5024	KING	MISDEMEANOR	FAX	4/1/2016	0	0	5	.
WSH	5025	KING	MISDEMEANOR	FAX	4/1/2016	3	3	6	.
WSH	5026	SNOHOMISH	MISDEMEANOR	FAX	4/1/2016	4	4	7	.
WSH	5027	GRAYS HARBOR	MISDEMEANOR	FAX	4/1/2016	0	0	7	.
WSH	5028	PIERCE	FELONY	FAX	4/1/2016	0	0	13	.
WSH	5029	CLARK	FELONY	FAX	4/1/2016	0	0	14	.
WSH	5030	SNOHOMISH	FELONY	INCOMPLETE	4/1/2016	0	0	.	29
WSH	5031	KING	MISDEMEANOR	WITHDRAWN	4/2/2016	0	0	3	.
WSH	5032	KING	MISDEMEANOR	FAX	4/2/2016	0	0	6	.
WSH	5033	KING	MISDEMEANOR	FAX	4/4/2016	0	0	2	.
WSH	5034	KING	MISDEMEANOR	FAX	4/4/2016	0	0	3	.
WSH	5035	KING	MISDEMEANOR	TIC	4/4/2016	0	0	3	.
WSH	5036	LEWIS	FELONY	FAX	4/4/2016	0	0	3	.

WSH	5037	KING	MISDEMEANOR	FAX	4/4/2016	0	0	4	.
WSH	5038	KING	MISDEMEANOR	FAX	4/4/2016	0	0	4	.
WSH	5039	LEWIS	FELONY	FAX	4/4/2016	1	1	4	.
WSH	5040	CLARK	FELONY	FAX	4/4/2016	1	1	7	.
WSH	5041	KING	MISDEMEANOR	FAX	4/4/2016	0	0	14	.
WSH	5042	KING	FELONY	INCOMPLETE	4/4/2016	0	0	.	26
WSH	5043	WHATCOM	FELONY CLASS B	BED OFFERED	4/4/2016	0	0	22	.
WSH	5044	KITSAP	MISDEMEANOR	FAX	4/5/2016	0	0	7	.
WSH	5045	PIERCE	MISDEMEANOR	FAX	4/5/2016	0	0	7	.
WSH	5046	THURSTON	FELONY CLASS A	CANCELLED	4/5/2016	7	7	10	.
WSH	5047	THURSTON	FELONY	FAX	4/5/2016	0	0	13	.
WSH	5048	PIERCE	FELONY CLASS B	CANCELLED	4/5/2016	0	0	24	.
WSH	5049	PIERCE	MISDEMEANOR	FAX	4/6/2016	0	.	2	.
WSH	5050	MASON	MISDEMEANOR	FAX	4/6/2016	1	1	6	.
WSH	5051	PIERCE	MISDEMEANOR	FAX	4/6/2016	0	0	6	.
WSH	5052	KING	MISDEMEANOR	FAX	4/6/2016	0	0	6	.
WSH	5053	CLARK	MISDEMEANOR	FAX	4/6/2016	0	0	6	.
WSH	5054	MASON	MISDEMEANOR	FAX	4/6/2016	1	1	6	.
WSH	5055	KITSAP	FELONY	FAX	4/6/2016	1	1	7	.
WSH	5056	SNOHOMISH	MISDEMEANOR	FAX	4/6/2016	0	0	7	.
WSH	5057	CLARK	FELONY	FAX	4/6/2016	0	0	7	.
WSH	5058	SAN JUAN	MISDEMEANOR	FAX	4/6/2016	0	0	7	.
WSH	5059	SNOHOMISH	MISDEMEANOR	FAX	4/6/2016	2	2	7	.
WSH	5060	KING	MISDEMEANOR	FAX	4/6/2016	0	0	8	.
WSH	5061	KITSAP	FELONY	FAX	4/6/2016	1	1	8	.
WSH	5062	SNOHOMISH	MISDEMEANOR	FAX	4/6/2016	0	0	8	.
WSH	5063	CLARK	MISDEMEANOR	TIC	4/6/2016	1	1	8	.
WSH	5064	KING	MISDEMEANOR	FAX	4/6/2016	0	0	9	.
WSH	5065	KING	MISDEMEANOR	FAX	4/6/2016	0	0	9	.
WSH	5066	KING	MISDEMEANOR	FAX	4/6/2016	0	0	9	.
WSH	5067	SNOHOMISH	MISDEMEANOR	FAX	4/6/2016	0	0	9	.

WSH	5068	GRAYS HARBOR	MISDEMEANOR	FAX	4/6/2016	1	1	12	.
WSH	5069	KING	FELONY	FAX	4/6/2016	1	1	22	.
WSH	5070	KING	MISDEMEANOR	WITHDRAWN	4/7/2016	0	.	5	.
WSH	5071	KING	MISDEMEANOR	FAX	4/7/2016	0	0	6	.
WSH	5072	SNOHOMISH	MISDEMEANOR	FAX	4/7/2016	0	0	6	.
WSH	5073	CLARK	FELONY	TIC	4/7/2016	1	1	7	.
WSH	5074	PIERCE	MISDEMEANOR	FAX	4/7/2016	0	0	11	.
WSH	5075	KING	MISDEMEANOR	TIC	4/7/2016	0	.	17	.
WSH	5076	KING	FELONY	FAX	4/7/2016	0	0	18	.
WSH	5077	KING	MISDEMEANOR	FAX	4/7/2016	2	2	20	.
WSH	5078	KITSAP	FELONY	FAX	4/8/2016	3	3	5	.
WSH	5079	THURSTON	MISDEMEANOR	FAX	4/8/2016	3	.	6	.
WSH	5080	SNOHOMISH	MISDEMEANOR	FAX	4/8/2016	0	0	10	.
WSH	5081	SNOHOMISH	FELONY	FAX	4/8/2016	0	0	11	.
WSH	5082	JEFFERSON	FELONY	FAX	4/8/2016	0	0	12	.
WSH	5083	KING	MISDEMEANOR	FAX	4/8/2016	6	6	18	.
WSH	5084	KING	MISDEMEANOR	FAX	4/9/2016	0	0	6	.
WSH	5085	KING	MISDEMEANOR	FAX	4/9/2016	0	0	11	.
WSH	5086	PIERCE	MISDEMEANOR	WITHDRAWN	4/11/2016	0	0	1	.
WSH	5087	KING	MISDEMEANOR	FAX	4/11/2016	0	0	2	.
WSH	5088	MASON	MISDEMEANOR	FAX	4/11/2016	1	1	2	.
WSH	5089	KING	MISDEMEANOR	FAX	4/11/2016	0	0	3	.
WSH	5090	LEWIS	FELONY	FAX	4/11/2016	0	0	4	.
WSH	5091	PIERCE	MISDEMEANOR	TIC	4/11/2016	0	0	7	.
WSH	5092	KING	MISDEMEANOR	FAX	4/11/2016	0	0	8	.
WSH	5093	KING	MISDEMEANOR	FAX	4/11/2016	0	0	10	.
WSH	5094	KING	MISDEMEANOR	FAX	4/11/2016	0	0	10	.
WSH	5095	KING	MISDEMEANOR	WITHDRAWN	4/11/2016	0	0	10	.
WSH	5096	KING	FELONY	FAX	4/11/2016	0	0	11	.
WSH	5097	KING	MISDEMEANOR	FAX	4/11/2016	3	3	14	.
WSH	5098	KING	MISDEMEANOR	BED OFFERED	4/11/2016	0	0	17	.

WSH	5099	PACIFIC	FELONY	INCOMPLETE	4/11/2016	0	0	.	19
WSH	5100	KING	FELONY CLASS A	BED OFFERED	4/11/2016	0	0	.	19
WSH	5101	KING	FELONY	WITHDRAWN	4/12/2016	0	0	6	.
WSH	5102	KING	MISDEMEANOR	WITHDRAWN	4/12/2016	0	0	7	.
WSH	5103	CLARK	MISDEMEANOR	FAX	4/12/2016	1	1	8	.
WSH	5104	THURSTON	FELONY	FAX	4/12/2016	1	1	8	.
WSH	5105	SNOHOMISH	MISDEMEANOR	FAX	4/12/2016	0	0	8	.
WSH	5106	LEWIS	MISDEMEANOR	FAX	4/12/2016	0	0	8	.
WSH	5107	CLALLAM	MISDEMEANOR	FAX	4/12/2016	0	0	9	.
WSH	5108	KING	MISDEMEANOR	FAX	4/12/2016	0	0	9	.
WSH	5109	KING	FELONY	WITHDRAWN	4/12/2016	0	0	9	.
WSH	5110	KING	MISDEMEANOR	FAX	4/12/2016	0	0	10	.
WSH	5111	KING	FELONY	INCOMPLETE	4/12/2016	7	7	.	18
WSH	5112	THURSTON	FELONY	FAX	4/13/2016	1	1	2	.
WSH	5113	THURSTON	FELONY	FAX	4/13/2016	1	1	6	.
WSH	5114	GRAYS HARBOR	FELONY	FAX	4/13/2016	1	.	6	.
WSH	5115	THURSTON	FELONY	FAX	4/13/2016	0	0	6	.
WSH	5116	MASON	MISDEMEANOR	FAX	4/13/2016	1	1	7	.
WSH	5117	SNOHOMISH	MISDEMEANOR	FAX	4/13/2016	2	2	7	.
WSH	5118	SNOHOMISH	MISDEMEANOR	WITHDRAWN	4/13/2016	0	0	7	.
WSH	5119	CLARK	FELONY	FAX	4/13/2016	0	0	7	.
WSH	5120	MASON	MISDEMEANOR	EVAL CLOSED	4/13/2016	1	1	8	.
WSH	5121	SNOHOMISH	MISDEMEANOR	FAX	4/13/2016	0	0	8	.
WSH	5122	THURSTON	MISDEMEANOR	EVAL CLOSED	4/13/2016	1	1	8	.
WSH	5123	KING	MISDEMEANOR	FAX	4/13/2016	0	0	8	.
WSH	5124	WHATCOM	MISDEMEANOR	FAX	4/13/2016	0	0	13	.
WSH	5125	KING	MISDEMEANOR	BED OFFERED	4/13/2016	0	0	15	.
WSH	5126	KING	FELONY	INCOMPLETE	4/13/2016	1	1	.	17
WSH	5127	KING	FELONY CLASS B	INCOMPLETE	4/13/2016	0	0	.	17
WSH	5128	CLARK	MISDEMEANOR	TIC	4/14/2016	0	0	4	.
WSH	5129	PIERCE	MISDEMEANOR	FAX	4/14/2016	0	0	6	.

WSH	5130	KITSAP	MISDEMEANOR	FAX	4/14/2016	0	0	6	.
WSH	5131	JEFFERSON	MISDEMEANOR	FAX	4/14/2016	0	0	7	.
WSH	5132	GRAYS HARBOR	MISDEMEANOR	FAX	4/14/2016	0	0	8	.
WSH	5133	KING	MISDEMEANOR	FAX	4/14/2016	0	0	12	.
WSH	5134	SNOHOMISH	FELONY	FAX	4/14/2016	0	0	15	.
WSH	5135	CLARK	FELONY CLASS B	BED OFFERED	4/14/2016	0	0	.	16
WSH	5136	CLARK	FELONY	FAX	4/15/2016	0	0	7	.
WSH	5137	KING	MISDEMEANOR	FAX	4/15/2016	0	0	13	.
WSH	5138	KING	MISDEMEANOR	FAX	4/15/2016	0	0	14	.
WSH	5139	CLARK	FELONY CLASS C	INCOMPLETE	4/15/2016	0	0	.	15
WSH	5140	KING	MISDEMEANOR	FAX	4/18/2016	0	0	2	.
WSH	5141	SNOHOMISH	MISDEMEANOR	FAX	4/18/2016	0	0	2	.
WSH	5142	KING	MISDEMEANOR	FAX	4/18/2016	1	1	7	.
WSH	5143	KITSAP	FELONY	FAX	4/18/2016	1	1	7	.
WSH	5144	CLARK	FELONY	FAX	4/18/2016	0	0	8	.
WSH	5145	KING	FELONY	FAX	4/18/2016	0	0	9	.
WSH	5146	KING	MISDEMEANOR	FAX	4/18/2016	1	1	10	.
WSH	5147	CLARK	MISDEMEANOR	INCOMPLETE	4/18/2016	1	1	.	12
WSH	5148	SNOHOMISH	MISDEMEANOR	INCOMPLETE	4/18/2016	0	0	.	12
WSH	5149	CLARK	MISDEMEANOR	FAX	4/19/2016	0	0	8	.
WSH	5150	SNOHOMISH	FELONY	INCOMPLETE	4/19/2016	0	0	.	11
WSH	5151	KING	MISDEMEANOR	INCOMPLETE	4/19/2016	0	0	.	11
WSH	5152	SNOHOMISH	MISDEMEANOR	FAX	4/20/2016	0	0	1	.
WSH	5153	THURSTON	MISDEMEANOR	FAX	4/20/2016	0	0	5	.
WSH	5154	PIERCE	MISDEMEANOR	EVAL CLOSED	4/20/2016	0	0	6	.
WSH	5155	PIERCE	MISDEMEANOR	EVAL CLOSED	4/20/2016	0	0	7	.
WSH	5156	THURSTON	MISDEMEANOR	FAX	4/20/2016	1	2	7	.
WSH	5157	KING	MISDEMEANOR	FAX	4/20/2016	0	0	7	.
WSH	5158	KING	MISDEMEANOR	FAX	4/20/2016	0	0	8	.
WSH	5159	SNOHOMISH	FELONY	FAX	4/20/2016	0	0	.	10
WSH	5160	KING	FELONY	INCOMPLETE	4/20/2016	0	0	.	10

WSH	5161	KING	MISDEMEANOR	INCOMPLETE	4/20/2016	2	2	.	10
WSH	5162	KING	MISDEMEANOR	INCOMPLETE	4/20/2016	0	0	.	10
WSH	5163	KING	FELONY	INCOMPLETE	4/20/2016	0	0	.	10
WSH	5164	PIERCE	MISDEMEANOR	INCOMPLETE	4/20/2016	0	0	.	10
WSH	5165	GRAYS HARBOR	MISDEMEANOR	FAX	4/21/2016	1	1	5	.
WSH	5166	KING	MISDEMEANOR	WITHDRAWN	4/21/2016	0	0	6	.
WSH	5167	CLALLAM	FELONY	FAX	4/21/2016	1	1	6	.
WSH	5168	KING	MISDEMEANOR	FAX	4/21/2016	0	0	7	.
WSH	5169	GRAYS HARBOR	MISDEMEANOR	FAX	4/21/2016	0	0	7	.
WSH	5170	KING	MISDEMEANOR	FAX	4/21/2016	0	0	8	.
WSH	5171	WHATCOM	FELONY CLASS A	INCOMPLETE	4/21/2016	0	0	.	9
WSH	5172	SNOHOMISH	FELONY CLASS C	INCOMPLETE	4/21/2016	1	1	.	9
WSH	5173	CLARK	FELONY	INCOMPLETE	4/21/2016	1	1	.	9
WSH	5174	SNOHOMISH	MISDEMEANOR	INCOMPLETE	4/21/2016	0	0	.	9
WSH	5175	SNOHOMISH	MISDEMEANOR	FAX	4/21/2016	0	0	.	9
WSH	5176	SNOHOMISH	MISDEMEANOR	FAX	4/21/2016	0	0	.	9
WSH	5177	KING	FELONY	INCOMPLETE	4/21/2016	1	1	.	9
WSH	5178	PIERCE	MISDEMEANOR	FAX	4/22/2016	0	0	6	.
WSH	5179	CLARK	MISDEMEANOR	FAX	4/22/2016	0	0	6	.
WSH	5180	THURSTON	FELONY	FAX	4/22/2016	0	0	6	.
WSH	5181	COWLITZ	FELONY	FAX	4/22/2016	0	0	6	.
WSH	5182	CLARK	FELONY CLASS C	INCOMPLETE	4/22/2016	0	0	.	8
WSH	5183	SNOHOMISH	FELONY	FAX	4/22/2016	3	3	.	8
WSH	5184	KING	MISDEMEANOR	INCOMPLETE	4/23/2016	0	0	.	7
WSH	5185	KING	MISDEMEANOR	FAX	4/25/2016	0	0	2	.
WSH	5186	PIERCE	MISDEMEANOR	FAX	4/25/2016	0	0	3	.
WSH	5187	KITSAP	FELONY	FAX	4/25/2016	0	0	4	.
WSH	5188	GRAYS HARBOR	FELONY	FAX	4/25/2016	1	1	4	.
WSH	5189	KING	MISDEMEANOR	FAX	4/25/2016	0	0	4	.
WSH	5190	KING	MISDEMEANOR	FAX	4/25/2016	0	0	4	.
WSH	5191	KING	MISDEMEANOR	INCOMPLETE	4/25/2016	1	1	.	5

WSH	5192	KING	MISDEMEANOR	INCOMPLETE	4/25/2016	0	0	.	5
WSH	5193	CLARK	MISDEMEANOR	FAX	4/25/2016	0	0	.	5
WSH	5194	SNOHOMISH	MISDEMEANOR	INCOMPLETE	4/25/2016	0	0	.	5
WSH	5195	SNOHOMISH	MISDEMEANOR	WITHDRAWN	4/25/2016	0	0	.	5
WSH	5196	CLARK	FELONY	FAX	4/25/2016	0	0	.	5
WSH	5197	LEWIS	FELONY	FAX	4/25/2016	0	0	.	5
WSH	5198	KING	FELONY	INCOMPLETE	4/25/2016	0	0	.	5
WSH	5199	KING	MISDEMEANOR	INCOMPLETE	4/25/2016	0	0	.	5
WSH	5200	KING	MISDEMEANOR	INCOMPLETE	4/25/2016	1	1	.	5
WSH	5201	PIERCE	MISDEMEANOR	WITHDRAWN	4/26/2016	0	0	2	.
WSH	5202	PIERCE	MISDEMEANOR	FAX	4/26/2016	0	0	3	.
WSH	5203	KING	FELONY	INCOMPLETE	4/26/2016	1	1	.	4
WSH	5204	KING	MISDEMEANOR	INCOMPLETE	4/26/2016	0	0	.	4
WSH	5205	CLARK	MISDEMEANOR	INCOMPLETE	4/26/2016	0	0	.	4
WSH	5206	KITSAP	MISDEMEANOR	FAX	4/26/2016	0	0	.	4
WSH	5207	COWLITZ	FELONY	INCOMPLETE	4/26/2016	1	1	.	4
WSH	5208	KING	FELONY	INCOMPLETE	4/26/2016	1	1	.	4
WSH	5209	COWLITZ	FELONY	INCOMPLETE	4/26/2016	1	1	.	4
WSH	5210	KING	FELONY	INCOMPLETE	4/26/2016	1	1	.	4
WSH	5211	PIERCE	MISDEMEANOR	INCOMPLETE	4/27/2016	0	0	.	3
WSH	5212	KING	FELONY	INCOMPLETE	4/27/2016	0	0	.	3
WSH	5213	KING	MISDEMEANOR	INCOMPLETE	4/27/2016	1	1	.	3
WSH	5214	KING	FELONY	INCOMPLETE	4/27/2016	0	0	.	3
WSH	5215	WAHIAKUM	FELONY	INCOMPLETE	4/27/2016	0	0	.	3
WSH	5216	PIERCE	MISDEMEANOR	BED OFFERED	4/28/2016	0	0	0	.
WSH	5217	WHATCOM	FELONY	INCOMPLETE	4/28/2016	1	1	.	2
WSH	5218	CLALLAM	MISDEMEANOR	FAX	4/28/2016	0	0	.	2
WSH	5219	KING	MISDEMEANOR	INCOMPLETE	4/28/2016	0	0	.	2
WSH	5220	CLALLAM	MISDEMEANOR	FAX	4/28/2016	0	0	.	2
WSH	5221	KING	MISDEMEANOR	INCOMPLETE	4/28/2016	0	0	.	2
WSH	5222	KING	FELONY	INCOMPLETE	4/28/2016	0	0	.	2

WSH	5223	CLARK	MISDEMEANOR	INCOMPLETE	4/28/2016	0	0	.	2
WSH	5224	THURSTON	FELONY	INCOMPLETE	4/28/2016	4	4	.	2
WSH	5225	SNOHOMISH	MISDEMEANOR	INCOMPLETE	4/28/2016	0	0	.	2
WSH	5226	PIERCE	MISDEMEANOR	INCOMPLETE	4/29/2016	0	0	.	1
WSH	5227	KITSAP	FELONY	INCOMPLETE	4/29/2016	0	0	.	1
WSH	5228	SNOHOMISH	FELONY CLASS A	BED OFFERED	4/29/2016	0	0	.	1
WSH	5229	KING	MISDEMEANOR	INCOMPLETE	4/29/2016	0	0	.	1
WSH	5230	MASON	MISDEMEANOR	INCOMPLETE	4/29/2016	0	0	.	1
WSH	5231	KING	MISDEMEANOR	INCOMPLETE	4/29/2016	0	0	.	1
WSH	5232	KING	MISDEMEANOR	INCOMPLETE	4/29/2016	0	0	.	1
WSH	5233	KING	MISDEMEANOR	INCOMPLETE	4/29/2016	0	0	.	1
WSH	5234	KING	MISDEMEANOR	WITHDRAWN	4/30/2016	0	0	.	0
ESH	4164	SPOKANE	FELONY	ADMISSION	1/29/2016	31	31	66	.
ESH	4790	BENTON	MISDEMEANOR	FAX	2/10/2016	0	0	69	.
ESH	4809	STEVENS	FELONY	FAX	3/8/2016	17	.	24	.
ESH	4810	SPOKANE	MISDEMEANOR	FAX	3/8/2016	16	16	29	.
ESH	4813	SPOKANE	FELONY	FAX	3/9/2016	7	7	30	.
ESH	4824	YAKIMA	FELONY	ADMISSION	3/15/2016	1	1	29	.
ESH	4827	KITTITAS	MISDEMEANOR	ADMISSION	3/16/2016	0	0	.	45
ESH	4834	YAKIMA	FELONY	FAX	3/16/2016	8	26	28	.
ESH	4835	BENTON	MISDEMEANOR	FAX	3/16/2016	0	0	16	.
ESH	4837	SPOKANE	FELONY	FAX	3/17/2016	6	6	18	.
ESH	4840	CHELAN	FELONY	FAX	3/21/2016	0	0	17	.
ESH	4842	SPOKANE	MISDEMEANOR	FAX	3/22/2016	1	1	10	.
ESH	4844	STEVENS	FELONY	FAX	3/22/2016	1	1	13	.
ESH	4846	BENTON	MISDEMEANOR	FAX	3/23/2016	0	0	9	.
ESH	4847	YAKIMA	MISDEMEANOR	FAX	3/23/2016	1	1	14	.
ESH	4848	SPOKANE	FELONY	FAX	3/23/2016	0	0	9	.
ESH	4849	GRANT	MISDEMEANOR	FAX	3/23/2016	1	1	12	.
ESH	4850	CHELAN	MISDEMEANOR	FAX	3/23/2016	0	1	12	.
ESH	4851	SPOKANE	MISDEMEANOR	FAX	3/23/2016	7	7	14	.

ESH	4853	CHELAN	FELONY	FAX	3/24/2016	1	.	12	.
ESH	4854	GRANT	FELONY	FAX	3/24/2016	0	4	11	.
ESH	4855	SPOKANE	FELONY	FAX	3/24/2016	1	1	12	.
ESH	4860	GRANT	MISDEMEANOR	FAX	3/30/2016	2	5	12	.
ESH	4861	BENTON	MISDEMEANOR	FAX	3/31/2016	0	4	19	.
ESH	4862	SPOKANE	MISDEMEANOR	FAX	3/31/2016	0	0	4	.
ESH	4863	SPOKANE	MISDEMEANOR	FAX	3/31/2016	0	0	7	.
ESH	4864	YAKIMA	MISDEMEANOR	FAX	3/31/2016	0	0	11	.
ESH	4978	YAKIMA	FELONY	FAX	3/2/2016	1	1	.	59
ESH	4984	ASOTIN	FELONY	ADMISSION	3/14/2016	0	0	36	.
ESH	4986	FRANKLIN	FELONY	ADMISSION	3/15/2016	1	.	36	.
ESH	4987	SPOKANE	FELONY	FAX	3/18/2016	7	3	41	.
ESH	4988	BENTON	FELONY	FAX	3/22/2016	0	0	13	.
ESH	4990	SPOKANE	MISDEMEANOR	FAX	3/28/2016	16	18	.	33
ESH	4991	ADAMS	FELONY	ADMISSION	3/28/2016	0	0	24	.
ESH	4992	GRANT	FELONY	ADMISSION	3/29/2016	6	6	31	.
ESH	5244	SPOKANE	FELONY	FAX	4/4/2016	0	0	11	.
ESH	5245	CHELAN	FELONY	FAX	4/6/2016	1	1	8	.
ESH	5246	CHELAN	MISDEMEANOR	FAX	4/8/2016	0	0	12	.
ESH	5247	SPOKANE	FELONY	FAX	4/8/2016	0	0	13	.
ESH	5248	SPOKANE	FELONY	FAX	4/12/2016	1	1	7	.
ESH	5249	FRANKLIN	FELONY	FAX	4/12/2016	1	1	9	.
ESH	5250	CHELAN	MISDEMEANOR	FAX	4/12/2016	0	0	13	.
ESH	5251	SPOKANE	FELONY	FAX	4/12/2016	1	1	14	.
ESH	5252	SPOKANE	FELONY	FAX	4/12/2016	0	0	.	18
ESH	5253	BENTON	MISDEMEANOR	FAX	4/13/2016	0	0	8	.
ESH	5254	BENTON	MISDEMEANOR	FAX	4/13/2016	0	0	9	.
ESH	5255	KLICKITAT	MISDEMEANOR	FAX	4/13/2016	0	1	16	.
ESH	5256	SPOKANE	MISDEMEANOR	FAX	4/13/2016	0	0	.	17
ESH	5257	SPOKANE	MISDEMEANOR	FAX	4/14/2016	0	1	11	.
ESH	5258	SPOKANE	MISDEMEANOR	FAX	4/14/2016	1	1	11	.

ESH	5259	STEVENS	FELONY	FAX	4/14/2016	0	0	.	16
ESH	5260	SPOKANE	MISDEMEANOR	FAX	4/15/2016	0	.	11	.
ESH	5261	SPOKANE	FELONY	FAX	4/18/2016	0	0	7	.
ESH	5262	SPOKANE	MISDEMEANOR	FAX	4/18/2016	0	0	7	.
ESH	5263	YAKIMA	FELONY	FAX	4/18/2016	0	0	.	12
ESH	5264	SPOKANE	MISDEMEANOR	FAX	4/19/2016	0	1	8	.
ESH	5265	FRANKLIN	FELONY	FAX	4/19/2016	1	1	.	11
ESH	5266	FRANKLIN	FELONY	ADMISSION	4/19/2016	1	1	.	11
ESH	5267	YAKIMA	FELONY	ADMISSION	4/19/2016	0	1	.	11
ESH	5268	YAKIMA	MISDEMEANOR	FAX	4/20/2016	0	0	8	.
ESH	5269	SPOKANE	MISDEMEANOR	FAX	4/20/2016	0	0	9	.
ESH	5270	CHELAN	FELONY	FAX	4/20/2016	1	1	.	10
ESH	5271	PEND OREILLE	FELONY	FAX	4/21/2016	0	0	8	.
ESH	5272	STEVENS	FELONY	FAX	4/22/2016	0	0	.	8
ESH	5273	SPOKANE	FELONY	FAX	4/25/2016	0	0	.	5
ESH	5274	SPOKANE	FELONY	FAX	4/25/2016	1	1	.	5
ESH	5275	SPOKANE	MISDEMEANOR	FAX	4/25/2016	3	3	.	5
ESH	5276	LINCOLN	FELONY	FAX	4/26/2016	0	0	.	4
ESH	5277	YAKIMA	MISDEMEANOR	FAX	4/26/2016	0	0	.	4
ESH	5278	FRANKLIN	FELONY	FAX	4/26/2016	0	0	.	4
ESH	5279	FRANKLIN	FELONY	FAX	4/26/2016	0	0	.	4
ESH	5280	FRANKLIN	FELONY	FAX	4/26/2016	1	2	.	4
ESH	5281	YAKIMA	MISDEMEANOR	ADMISSION	4/26/2016	0	0	.	4
ESH	5282	BENTON	FELONY	FAX	4/28/2016	0	0	.	2
ESH	5283	ADAMS	FELONY	FAX	4/28/2016	0	0	.	2
ESH	5284	YAKIMA	MISDEMEANOR	FAX	4/29/2016	0	.	.	1

Appendix D: Class Member--Restoration Information for April 2016

Hospital	Class Member	County	Offense	Completion Method or Incomplete	Order Signed Date	Number of days from signed order to:			
						Order Received	Discovery Received	Complete	Incomplete to End of Reporting Period
WSH	4175	SNOHOMISH	FELONY CLASS A	BED OFFERED	1/29/2016	3	3	66	.
WSH	4449	KING	FELONY CLASS B	BED OFFERED	2/4/2016	0	0	62	.
WSH	4457	THURSTON	FELONY CLASS A	BED OFFERED	2/8/2016	0	0	56	.
WSH	4458	THURSTON	FELONY CLASS B	BED OFFERED	2/8/2016	1	1	56	.
WSH	4459	THURSTON	FELONY CLASS C	BED OFFERED	2/8/2016	0	0	56	.
WSH	4460	GRAYS HARBOR	FELONY CLASS A	BED OFFERED	2/8/2016	0	0	65	.
WSH	4461	CLARK	FELONY CLASS C	CANCELLED	2/9/2016	1	1	52	0
WSH	4462	CLARK	FELONY CLASS C	BED OFFERED	2/9/2016	1	1	55	.
WSH	4467	KING	FELONY CLASS B	BED OFFERED	2/10/2016	0	0	54	.
WSH	4468	MASON	FELONY CLASS C	BED OFFERED	2/11/2016	1	1	60	.
WSH	4469	MASON	FELONY CLASS B	BED OFFERED	2/11/2016	0	0	60	.
WSH	4470	SNOHOMISH	FELONY CLASS C	BED OFFERED	2/12/2016	0	0	52	.
WSH	4472	ISLAND	FELONY CLASS C	BED OFFERED	2/16/2016	14	14	52	.
WSH	4474	KING	FELONY CLASS B	BED OFFERED	2/16/2016	0	0	57	.
WSH	4476	PIERCE	FELONY CLASS B	BED OFFERED	2/17/2016	1	1	58	.
WSH	4477	KING	FELONY CLASS C	BED OFFERED	2/17/2016	1	1	56	.
WSH	4478	KING	FELONY CLASS B	BED OFFERED	2/17/2016	1	1	57	.
WSH	4479	WHATCOM	FELONY CLASS B	BED OFFERED	2/17/2016	1	1	57	.
WSH	4483	KITSAP	FELONY CLASS C	BED OFFERED	2/18/2016	4	4	47	.
WSH	4484	PACIFIC	FELONY CLASS C	BED OFFERED	2/19/2016	4	4	59	.

WSH	4486	CLARK	FELONY CLASS B	BED OFFERED	2/19/2016	3	3	61	.
WSH	4489	KING	FELONY CLASS C	BED OFFERED	2/22/2016	0	0	51	.
WSH	4491	THURSTON	FELONY CLASS B	BED OFFERED	2/22/2016	0	0	52	.
WSH	4492	PIERCE	FELONY CLASS A	BED OFFERED	2/24/2016	1	1	56	.
WSH	4493	PIERCE	FELONY CLASS C	BED OFFERED	2/24/2016	2	2	54	.
WSH	4495	SKAGIT	FELONY CLASS C	BED OFFERED	2/25/2016	0	0	49	.
WSH	4497	CLARK	FELONY CLASS C	BED OFFERED	2/25/2016	4	4	53	.
WSH	4499	CLARK	FELONY CLASS B	BED OFFERED	2/26/2016	3	3	52	.
WSH	4503	KING	FELONY CLASS B	BED OFFERED	2/29/2016	1	1	46	.
WSH	4504	KING	FELONY CLASS B	BED OFFERED	2/29/2016	0	0	46	.
WSH	4870	PIERCE	FELONY CLASS C	BED OFFERED	3/1/2016	1	1	49	.
WSH	4871	KING	FELONY CLASS B	BED OFFERED	3/1/2016	0	0	52	.
WSH	4876	KING	FELONY CLASS B	BED OFFERED	3/2/2016	0	0	54	.
WSH	4877	PIERCE	FELONY CLASS C	BED OFFERED	3/2/2016	1	1	48	.
WSH	4882	WHATCOM	FELONY CLASS B	BED OFFERED	3/3/2016	0	0	54	.
WSH	4883	GRAYS HARBOR	FELONY CLASS B	BED OFFERED	3/4/2016	0	0	47	.
WSH	4884	PIERCE	FELONY CLASS A	BED OFFERED	3/4/2016	5	12	48	.
WSH	4885	KITSAP	FELONY CLASS C	BED OFFERED	3/4/2016	0	0	35	.
WSH	4886	PIERCE	FELONY CLASS C	BED OFFERED	3/4/2016	5	6	46	.
WSH	4888	THURSTON	FELONY CLASS B	BED OFFERED	3/7/2016	1	1	35	.
WSH	4892	MASON	FELONY CLASS B	BED OFFERED	3/8/2016	0	0	45	.
WSH	4894	PIERCE	FELONY CLASS B	BED OFFERED	3/9/2016	1	1	48	.
WSH	4895	PIERCE	FELONY CLASS B	BED OFFERED	3/9/2016	1	1	48	.
WSH	4898	LEWIS	FELONY CLASS A	BED OFFERED	3/10/2016	1	1	46	.
WSH	4900	LEWIS	FELONY CLASS C	BED OFFERED	3/11/2016	0	0	45	.
WSH	4903	KING	FELONY CLASS C	BED OFFERED	3/14/2016	0	0	42	.
WSH	4905	PIERCE	FELONY CLASS C	BED OFFERED	3/16/2016	1	1	41	.

WSH	4906	KING	FELONY CLASS C	BED OFFERED	3/16/2016	0	0	40	.
WSH	4907	KING	FELONY CLASS A	INCOMPLETE	3/16/2016	0	0	.	45
WSH	4908	KING	MISDEMEANOR	INCOMPLETE	3/16/2016	0	0	.	45
WSH	4909	PIERCE	FELONY CLASS C	BED OFFERED	3/16/2016	14	15	41	.
WSH	4911	CLARK	FELONY CLASS C	BED OFFERED	3/17/2016	1	1	41	.
WSH	4912	KING	FELONY CLASS B	INCOMPLETE	3/17/2016	0	0	.	44
WSH	4913	LEWIS	FELONY CLASS A	INCOMPLETE	3/17/2016	0	0	.	44
WSH	4914	WHATCOM	FELONY CLASS B	BED OFFERED	3/17/2016	0	0	.	44
WSH	4915	CLARK	FELONY CLASS A	INCOMPLETE	3/17/2016	1	1	.	44
WSH	4918	CLARK	FELONY CLASS B	BED OFFERED	3/18/2016	0	0	.	43
WSH	4919	KING	MISDEMEANOR	BED OFFERED	3/21/2016	1	1	21	.
WSH	4920	GRAYS HARBOR	FELONY CLASS C	INCOMPLETE	3/21/2016	1	1	.	40
WSH	4921	KING	MISDEMEANOR	BED OFFERED	3/21/2016	0	0	15	.
WSH	4925	KING	FELONY CLASS A	BED OFFERED	3/22/2016	0	0	.	39
WSH	4926	KITSAP	FELONY CLASS C	INCOMPLETE	3/22/2016	0	0	.	39
WSH	4927	CLARK	FELONY CLASS C	BED OFFERED	3/22/2016	0	0	.	39
WSH	4930	CLARK	FELONY CLASS C	INCOMPLETE	3/23/2016	0	0	.	38
WSH	4931	KING	MISDEMEANOR	BED OFFERED	3/23/2016	0	0	14	.
WSH	4932	KING	FELONY CLASS B	INCOMPLETE	3/23/2016	0	0	.	38
WSH	4934	PIERCE	FELONY CLASS B	INCOMPLETE	3/24/2016	1	1	.	37
WSH	4935	PIERCE	MISDEMEANOR	BED OFFERED	3/25/2016	0	0	13	.
WSH	4936	KITSAP	MISDEMEANOR	BED OFFERED	3/25/2016	0	0	11	.
WSH	4937	KING	FELONY CLASS B	BED OFFERED	3/28/2016	0	0	.	33
WSH	4938	THURSTON	FELONY CLASS C	INCOMPLETE	3/28/2016	1	1	.	33
WSH	4939	COWLITZ	FELONY CLASS B	INCOMPLETE	3/29/2016	1	1	.	32
WSH	4940	KING	MISDEMEANOR	BED OFFERED	3/29/2016	1	1	20	.
WSH	4941	CLARK	FELONY CLASS C	INCOMPLETE	3/29/2016	0	0	.	32

WSH	4942	KING	FELONY CLASS C	INCOMPLETE	3/30/2016	0	0	.	31
WSH	4943	PIERCE	MISDEMEANOR	BED OFFERED	3/30/2016	0	0	13	.
WSH	4944	PIERCE	FELONY CLASS C	INCOMPLETE	3/30/2016	0	0	.	31
WSH	4993	SKAGIT	FELONY CLASS C	BED OFFERED	3/8/2016	31	31	44	.
WSH	4994	PACIFIC	FELONY CLASS C	BED OFFERED	3/25/2016	4	17	.	36
WSH	4995	LEWIS	FELONY CLASS C	INCOMPLETE	3/31/2016	0	0	.	30
WSH	4996	WHATCOM	FELONY CLASS C	INCOMPLETE	3/31/2016	0	0	.	30
WSH	5285	THURSTON	FELONY	INCOMPLETE	2/4/2016	84	84	.	86
WSH	5293	PIERCE	FELONY CLASS C	INCOMPLETE	4/1/2016	3	3	.	29
WSH	5294	PIERCE	MISDEMEANOR	BED OFFERED	4/1/2016	0	0	20	.
WSH	5295	PIERCE	FELONY CLASS A	INCOMPLETE	4/1/2016	0	0	.	29
WSH	5296	WHATCOM	FELONY CLASS B	BED OFFERED	4/1/2016	0	0	0	.
WSH	5297	PIERCE	FELONY CLASS A	INCOMPLETE	4/4/2016	7	7	.	26
WSH	5298	KING	FELONY CLASS B	INCOMPLETE	4/4/2016	0	0	.	26
WSH	5299	SNOHOMISH	FELONY CLASS C	INCOMPLETE	4/4/2016	0	0	.	26
WSH	5300	PIERCE	FELONY CLASS B	INCOMPLETE	4/6/2016	1	6	.	24
WSH	5301	PIERCE	FELONY CLASS C	INCOMPLETE	4/6/2016	0	0	.	24
WSH	5302	THURSTON	FELONY CLASS A	BED OFFERED	4/6/2016	2	2	21	.
WSH	5303	KING	FELONY CLASS B	INCOMPLETE	4/7/2016	4	4	.	23
WSH	5304	KING	FELONY CLASS C	INCOMPLETE	4/7/2016	0	0	.	23
WSH	5305	KING	FELONY CLASS B	INCOMPLETE	4/7/2016	0	0	.	23
WSH	5306	KITSAP	FELONY CLASS C	BED OFFERED	4/7/2016	0	0	11	.
WSH	5307	PIERCE	FELONY CLASS B	BED OFFERED	4/8/2016	0	0	5	.
WSH	5308	PIERCE	MISDEMEANOR	BED OFFERED	4/8/2016	3	3	19	.
WSH	5309	CLALLAM	FELONY CLASS C	INCOMPLETE	4/8/2016	1	1	.	22
WSH	5310	CLARK	FELONY CLASS C	INCOMPLETE	4/8/2016	0	0	.	22
WSH	5311	KING	FELONY CLASS B	INCOMPLETE	4/11/2016	0	0	.	19

WSH	5312	PIERCE	FELONY CLASS B	INCOMPLETE	4/11/2016	2	8	.	19
WSH	5313	THURSTON	FELONY CLASS C	INCOMPLETE	4/11/2016	0	0	.	19
WSH	5314	SNOHOMISH	FELONY CLASS C	BED OFFERED	4/12/2016	0	0	0	.
WSH	5315	CLARK	MISDEMEANOR	BED OFFERED	4/12/2016	1	1	.	18
WSH	5316	KING	FELONY CLASS C	INCOMPLETE	4/13/2016	0	0	.	17
WSH	5317	THURSTON	FELONY CLASS B	INCOMPLETE	4/13/2016	0	6	.	17
WSH	5318	WHATCOM	FELONY	BED OFFERED	4/13/2016	0	0	0	.
WSH	5319	PIERCE	FELONY CLASS C	BED OFFERED	4/13/2016	0	0	0	.
WSH	5320	KITSAP	FELONY CLASS C	BED OFFERED	4/13/2016	0	0	0	.
WSH	5321	PIERCE	FELONY CLASS C	INCOMPLETE	4/14/2016	1	1	.	16
WSH	5322	KING	FELONY CLASS B	BED OFFERED	4/14/2016	0	0	0	.
WSH	5323	KING	FELONY CLASS C	INCOMPLETE	4/14/2016	0	0	.	16
WSH	5324	KING	FELONY CLASS C	INCOMPLETE	4/14/2016	0	0	.	16
WSH	5325	CLARK	FELONY CLASS C	INCOMPLETE	4/14/2016	0	0	.	16
WSH	5326	PIERCE	MISDEMEANOR	BED OFFERED	4/15/2016	0	3	.	15
WSH	5327	SNOHOMISH	0	BED OFFERED	4/15/2016	0	0	.	15
WSH	5328	KING	MISDEMEANOR	CANCELLED	4/15/2016	3	3	14	.
WSH	5329	KING	MISDEMEANOR	BED OFFERED	4/15/2016	0	0	13	.
WSH	5330	SNOHOMISH	MISDEMEANOR	INCOMPLETE	4/15/2016	3	3	.	15
WSH	5331	PIERCE	FELONY CLASS A	INCOMPLETE	4/15/2016	0	0	.	15
WSH	5332	THURSTON	FELONY CLASS A	INCOMPLETE	4/18/2016	0	0	.	12
WSH	5333	THURSTON	FELONY CLASS C	BED OFFERED	4/18/2016	7	7	11	.
WSH	5334	KITSAP	FELONY CLASS C	INCOMPLETE	4/18/2016	0	0	.	12
WSH	5335	KITSAP	FELONY CLASS C	BED OFFERED	4/18/2016	0	0	.	12
WSH	5336	KING	MISDEMEANOR	INCOMPLETE	4/19/2016	1	1	.	11
WSH	5337	PIERCE	FELONY CLASS C	INCOMPLETE	4/19/2016	1	1	.	11
WSH	5338	GRAYS HARBOR	MISDEMEANOR	INCOMPLETE	4/19/2016	0	0	.	11

WSH	5339	KING	FELONY CLASS A	BED OFFERED	4/19/2016	0	0	0	.
WSH	5340	PIERCE	MISDEMEANOR	INCOMPLETE	4/20/2016	1	1	.	10
WSH	5341	KING	FELONY CLASS B	INCOMPLETE	4/20/2016	0	0	.	10
WSH	5342	KING	FELONY CLASS B	INCOMPLETE	4/21/2016	1	1	.	9
WSH	5343	LEWIS	FELONY CLASS C	BED OFFERED	4/21/2016	1	1	8	.
WSH	5344	SNOHOMISH	MISDEMEANOR	INCOMPLETE	4/22/2016	0	0	.	8
WSH	5345	JEFFERSON	FELONY CLASS C	INCOMPLETE	4/22/2016	0	0	.	8
WSH	5346	KING	FELONY CLASS B	BED OFFERED	4/25/2016	1	1	4	.
WSH	5347	THURSTON	FELONY CLASS A	INCOMPLETE	4/25/2016	1	1	.	5
WSH	5348	CLARK	FELONY CLASS C	INCOMPLETE	4/25/2016	2	2	.	5
WSH	5349	THURSTON	FELONY CLASS C	BED OFFERED	4/26/2016	0	0	.	4
WSH	5350	PIERCE	FELONY CLASS C	BED OFFERED	4/27/2016	1	1	.	3
WSH	5351	KING	FELONY CLASS C	BED OFFERED	4/27/2016	1	1	.	3
WSH	5352	PIERCE	FELONY CLASS C	INCOMPLETE	4/27/2016	2	2	.	3
WSH	5353	KING	FELONY CLASS A	INCOMPLETE	4/28/2016	0	0	.	2
WSH	5354	KING	FELONY CLASS B	BED OFFERED	4/28/2016	0	0	0	.
WSH	5355	CLARK	FELONY CLASS B	INCOMPLETE	4/29/2016	0	0	.	1
ESH	4522	FRANKLIN	FELONY	ADMISSION	2/19/2016	0	0	42	.
ESH	4526	YAKIMA	FELONY	ADMISSION	2/26/2016	3	0	40	.
ESH	4954	SPOKANE	FELONY	ADMISSION	3/3/2016	0	0	46	.
ESH	4958	FRANKLIN	FELONY	ADMISSION	3/8/2016	0	0	24	.
ESH	4962	Klickitat	FELONY	ADMISSION	3/21/2016	3	3	25	.
ESH	4963	SPOKANE	FELONY	ADMISSION	3/22/2016	1	1	31	.
ESH	4997	YAKIMA	MISDEMEANOR	ADMISSION	2/23/2016	0	0	43	.
ESH	4998	SPOKANE	FELONY	ADMISSION	3/7/2016	0	1	32	.
ESH	4999	FRANKLIN	FELONY	ADMISSION	3/8/2016	0	0	31	.
ESH	5000	YAKIMA	MISDEMEANOR	ADMISSION	3/8/2016	0	0	43	.

ESH	5001	PEND OREILLE	FELONY	ADMISSION	3/10/2016	0	0	32	.
ESH	5002	YAKIMA	FELONY	ADMISSION	3/10/2016	1	1	34	.
ESH	5003	YAKIMA	FELONY	ADMISSION	3/13/2016	5	5	38	.
ESH	5004	Klickitat	MISDEMEANOR	ADMISSION	3/15/2016	3	3	31	.
ESH	5005	SPOKANE	FELONY	ADMISSION	3/16/2016	0	1	26	.
ESH	5006	YAKIMA	FELONY	ADMISSION	3/17/2016	0	4	34	.
ESH	5007	SPOKANE	FELONY	ADMISSION	3/23/2016	1	1	30	.
ESH	5008	FRANKLIN	MISDEMEANOR	ADMISSION	3/23/2016	2	2	16	.
ESH	5009	OKANOGAN	FELONY	ADMISSION	3/24/2016	1	1	33	.
ESH	5010	ASOTIN	FELONY	ADMISSION	3/24/2016	20	20	.	37
ESH	5011	BENTON	FELONY	ADMISSION	3/31/2016	0	0	27	.
ESH	5371	OKANOGAN	FELONY	ADMISSION	4/1/2016	0	3	25	.
ESH	5372	STEVENS	FELONY	ADMISSION	4/5/2016	0	0	23	.
ESH	5373	BENTON	FELONY	ADMISSION	4/6/2016	0	0	.	24
ESH	5374	SPOKANE	FELONY	ADMISSION	4/7/2016	0	1	18	.
ESH	5375	BENTON	FELONY	ADMISSION	4/7/2016	0	0	20	.
ESH	5376	SPOKANE	FELONY	ADMISSION	4/7/2016	1	1	22	.
ESH	5377	SPOKANE	FELONY	ADMISSION	4/14/2016	0	0	15	.
ESH	5378	CHELAN	FELONY	ADMISSION	4/18/2016	1	1	.	12
ESH	5379	CHELAN	FELONY	ADMISSION	4/20/2016	0	0	.	10
ESH	5380	CHELAN	MISDEMEANOR	ADMISSION	4/20/2016	8	8	.	10
ESH	5381	BENTON	MISDEMEANOR	ADMISSION	4/27/2016	0	0	.	3

Appendix E: Class Member--Restoration Information for April 2016 – MAPLE LANE

Hospital	Class Member	County	Offense	Completion Method or Incomplete	Order Signed Date	Number of days from signed order to:			
						Order Received	Discovery Received	Complete	Incomplete to End of Reporting Period
WSH	4484	PACIFIC	FELONY CLASS C	BED OFFERED	2/19/2016	4	4	59	.
WSH	5306	KITSAP	FELONY CLASS C	BED OFFERED	4/7/2016	0	0	11	.
WSH	5296	WHATCOM	FELONY CLASS B	BED OFFERED	4/1/2016	0	0	0	.
WSH	5343	LEWIS	FELONY CLASS C	BED OFFERED	4/21/2016	1	1	8	.
WSH	4910	MASON	FELONY CLASS C	BED OFFERED	3/16/2016	0	0	2	.

Appendix F: Class Member--Restoration Information for April 2016 – YAKIMA

Hospital	Class Member	County	Offense	Completion Method or Incomplete	Order Signed Date	Number of days from signed order to:			
						Order Received	Discovery Received	Complete	Incomplete to end of Reporting Period
WSH	4923	SNOHOMISH	FELONY CLASS A	CANCELLED	3/22/2016	1	1	6	
WSH	4885	KITSAP	FELONY CLASS C	BED OFFERED	3/4/2016	0	0	35	
WSH	4891	SNOHOMISH	FELONY CLASS C	BED OFFERED	3/8/2016	0	0	9	
WSH	4454	SNOHOMISH	FELONY CLASS B	BED OFFERED	2/5/2016	3	3	49	
WSH	4888	THURSTON	FELONY CLASS B	BED OFFERED	3/7/2016	1	1	35	
WSH	4912	KING	FELONY CLASS B	INCOMPLETE	3/17/2016	0	0	15	
ESH	4520	FRANKLIN	FELONY	ADMISSION	2/11/2016	1	1	43	
ESH	4513	SPOKANE	FELONY	ADMISSION	2/5/2016	0	0	39	