

***Cassie Cordell Trueblood, et al., v. Washington State Department  
of Social and Health Services, et al.***  
***Case No. C14-1178 MJP***  
**Draft Monthly Report to the Court Appointed Monitor**

**October 15<sup>th</sup>, 2016**

Behavioral Health Administration  
Division of State Hospitals  
PO Box 45050  
Olympia, WA 98504-5050  
(360) 725-2260  
Fax: (360) 407-0304



## TABLE OF CONTENTS

Background.....	Page 3
Class Member Status Summary Information.....	Page 4
Class Member Status Data Tables.....	Page 6
Class Member Status Data Graphs.....	Page 9
Resources Required to Provide Timely Competency Services.....	Page 13
Key Accomplishments-September 2016.....	Page 13
<i>Trueblood</i> Implementation Steps Taken and Planned—September 2016.....	Page 15
February 8, 2016 Court Order Status Report/Updates.....	Page 26
July 7, 2016 Contempt Court Order Status Updates.....	Page 30
August 15, 2016 Order Modifying the Permanent Injunction.....	Page 30
Appendices.....	Page 31
Appendix A: Class Member—Evaluation Information for August 2016.....	Page 31
Appendix B: Class Member—Restoration Information for August 2016.....	Page 47
Appendix C: Class Member-Restoration Information for August 2016 Maple Lane.....	Page 51
Appendix D: Class Member-Restoration Information for August 2016 Yakima.....	Page 52
Appendix E: Class Member—Evaluation Information for September 2016.....	Page 53
Appendix F: Class Member—Restoration Information for September 2016.....	Page 68
Appendix G: Class Member—Restoration Information for September 2016 Maple Lane.....	Page 72
Appendix H: Class Member—Restoration Information for September 2016 Yakima.....	Page 73
Appendix I: Calculation of Contempt Fines (separate attachment).....	Page 73
Appendix J: Outliers and Delay Comments.....	Page 74

## BACKGROUND

---

On April 2, 2015, the Court ordered the Department of Social and Health Services (DSHS) to file monthly reports with the *Trueblood* Court Monitor on efforts to comply with Court orders to provide timely competency evaluation and restoration services to Class Members. This monthly report is submitted October 15, 2016 and covers the events of September 2016. This report also provides status updates on additional court order requirements.

On April 2, 2015, the Court ordered:

*“Defendants shall file a report with the Monitor on the fifth day of every month, which shall include:*

- (1) the number of days between when a court ordered provision of competency services and when provision was completed, for each person ordered to receive competency services during the previous month;*
- (2) data regarding the number of evaluators, bed capacity, physicians, and other resources needed to provide timely competency services;*
- (3) the steps taken in the previous months to implement this order;*
- (4) when and what results are intended to be realized by each of these steps;*
- (5) the results realized in the previous month;*
- (6) the steps planned to be taken in the following month;*
- (7) certification by Defendants that they are fully compliant with all deadlines that became due in the previous month;*
- (8) Defendants’ estimate for when the wait times will reach seven days or less, and all data relied on in making that estimate; and*
- (9) any other information the Monitor informs Defendants is necessary for the Monitor to fully review Defendants’ actions and advise the Court.”*

The April 2015 order was modified on February 8, 2016, another order was issued on July 7<sup>th</sup>, and another order was issued on August 15, 2016. Status updates on these orders begin on page 28.

This report provides the class member data for Competency Services displayed in two periods—August 1, 2016 – August 31, 2016 and September 1, 2016 - September 30, 2016. The August data are considered “mature” and the September data are a “first look” data set. April 2015 is the baseline month for data analysis.

Specific class member evaluation and restoration information is included in the appendices to this report.

## CLASS MEMBER STATUS SUMMARY INFORMATION

---

### **Analysis of Data: April 1, 2015 through September 30, 2016**

The average monthly referrals for each type of service are as follows:

- Average monthly jail-based evaluation orders signed for April 2015-September 2016
  - WSH: 205.5
  - ESH: 45.2
  - Both hospitals: 250.2
- Average monthly inpatient evaluation orders signed for April 2015- September 2016
  - WSH: 16.2
  - ESH: 5.6
  - Both hospitals: 21.8
- Average monthly restoration orders signed for April 2015- September 2016
  - WSH: 68.9
  - ESH: 11.7
  - Both hospitals: 80.6

### **Summary Points Related to Orders and Timeliness (see Tables 1-3 below for details)**

- Jail-based evaluation orders at WSH was at 238 which is higher than the 205.5 average. ESH had 49 orders which is higher than the 45.2 average. Combined, the hospitals totaled 287 orders compared with a 250.2 average.
- In-patient evaluation orders at both sites decreased to 30 in September which is higher than the 21.8 average. WSH received 21 compared with a 16.2 average. ESH had 9 orders which is higher than the 5.6 average.
- There were 112 restoration orders across both hospitals, up from 100 in August (average was 80.6). WSH orders decreased to 92 in September versus 93 in August. ESH increased to 20 orders in September compared with 7 in August.
- Jail-based evaluation wait times remain relatively stable this month. WSH is averaging 12.5 days from order to completion (13.1 last month). ESH is averaging 14.5 days. The combined average is 12.3 days.
- Inpatient evaluation wait times at WSH average are at 15.8 days. The ESH average is at 6.4 days. The combined average is at 12.3 days.
- Restoration wait times at WSH are at 17 days on average. The ESH average for is at 4.5 days. The combined average is at 14.7 days.
- Overall timeliness for jail-based evaluations is at 44% being completed within 14 days.
- Overall timeliness for inpatient evaluations is at 27% completion rate within 7 days.
- Overall timeliness for inpatient restorations is at 24% completion rate within 7 days.

**Outlier cases**

There are no class members to report waiting more than 100 days. In September, there were 9 patients from ESH and 8 patients from WSH with an incomplete status and waiting more than 20 days for an evaluation by the end of the reporting period. There were 0 patients from ESH and 1 patient from WSH with an incomplete status and waiting more than 40 days for restoration services. Please refer to appendix J in the final report for delay comments related to these 18 cases.

CLASS MEMBER STATUS DATA TABLES - TABLE 1. Class Member Status Western State Hospital

WESTERN STATE HOSPITAL		Court Orders Signed	Days from order signature to:								Percent complete within 7 days of order
			hospital receipt of order		hospital receipt of discovery		end of reporting month for incomplete referrals		completion		
			Average	Median	Average	Median	Average	Median	Average	Median	
Jail-based Evaluation	APR. 2015	176	1.3	0.0	1.9	1.0	9.5	6.0	14.6	14.0	14%
	MAY. 2015	183	1.3	0.0	1.6	0.0	11.4	9.0	13.0	11.0	16%
	JUN. 2015	212	1.7	0.0	2.1	1.0	10.9	8.0	17.8	15.0	10%
	JUL. 2015	236	1.4	0.0	1.8	0.0	12.3	9.0	18.4	17.0	6%
	AUG. 2015	185	1.9	0.0	2.2	0.0	13.4	11.0	20.7	20.0	7%
	SEP. 2015	202	1.6	0.0	1.7	0.0	11.7	8.0	17.6	16.0	10%
	OCT. 2015	213	1.9	0.0	2.0	0.0	16.7	15.0	16.4	15.0	19%
	NOV. 2015	164	1.8	0.0	1.9	0.0	18.0	13.0	16.0	14.0	28%
	DEC. 2015	195	1.6	0.0	1.7	0.0	13.7	8.5	15.5	14.0	14%
	JAN. 2016	181	1.3	0.0	1.2	0.0	15.6	9.0	13.3	12.0	28%
	FEB. 2016	205	0.6	0.0	0.6	0.0	6.6	5.0	10.0	8.0	45%
	MAR. 2016	220	0.7	0.0	0.8	0.0	6.1	3.0	8.9	7.0	59%
	APR. 2016	201	0.8	0.0	0.8	0.0	6.1	5.0	9.0	7.0	57%
	MAY. 2016	212	0.7	0.0	0.8	0.0	6.4	5.0	9.6	7.5	50%
	JUN. 2016	219	0.9	0.0	0.9	0.0	7.5	6.5	10.8	8.0	31%
JUL. 2016	228	0.7	0.0	0.8	0.0	9.4	6.0	12.2	9.0	47%*	
<b>AUG. 2016</b>	<b>229</b>	<b>0.8</b>	<b>0.0</b>	<b>0.9</b>	<b>0.0</b>	<b>7.6</b>	<b>6.0</b>	<b>13.1</b>	<b>11.0</b>	<b>51%*</b>	
<b>SEP. 2016</b>	<b>238</b>	<b>0.6</b>	<b>0.0</b>	<b>0.8</b>	<b>0.0</b>	<b>7.5</b>	<b>8.0</b>	<b>12.5</b>	<b>11.0</b>	<b>48%</b>	
Inpatient Evaluation	APR. 2015	10	5.8	1.0	5.8	1.0	10.7	7.0	22.2	18.0	22%
	MAY. 2015	11	2.9	2.0	2.9	2.0	11.4	13.0	18.9	20.0	8%
	JUN. 2015	10	3.0	1.0	3.0	1.0	14.0	12.0	12.3	15.0	25%
	JUL. 2015	15	3.5	1.0	3.5	1.0	16.6	9.0	14.8	15.0	20%
	AUG. 2015	15	4.5	1.0	4.5	1.0	10.0	11.0	25.5	17.0	7%
	SEP. 2015	15	2.6	1.0	2.6	1.0	15.1	16.0	19.7	20.0	11%
	OCT. 2015	17	1.5	1.0	1.5	1.0	19.0	19.0	23.6	22.0	0%
	NOV. 2015	14	1.7	1.0	1.7	1.0	14.1	12.0	23.9	22.0	6%
	DEC. 2015	11	4.1	1.0	4.1	1.0	13.1	12.0	22.2	27.0	10%
	JAN. 2016	13	4.0	1.0	3.8	1.0	12.2	11.0	24.7	23.0	0%
	FEB. 2016	16	4.4	1.0	4.4	1.0	10.7	8.5	17.1	15.5	8%
	MAR. 2016	18	3.1	1.0	3.1	1.0	6.8	7.0	15.5	14.0	10%
	APR. 2016	20	1.1	0.0	1.1	0.0	8.6	8.5	18.6	17.5	6%
	MAY. 2016	18	1.7	1.0	1.7	1.0	9.5	6.0	18.9	21.0	16%
	JUN. 2016	16	3.4	1.0	3.4	1.0	11.8	7.5	25.0	26.0	0%
JUL. 2016	19	4.7	2.0	4.7	2.0	7.5	4.0	17.3	14.5	6%	
<b>AUG. 2016</b>	<b>33</b>	<b>2.8</b>	<b>1.0</b>	<b>2.8</b>	<b>1.0</b>	<b>13.1</b>	<b>13.0</b>	<b>14.1</b>	<b>13.5</b>	<b>13%</b>	
<b>SEP. 2016</b>	<b>21</b>	<b>2.5</b>	<b>1.0</b>	<b>2.5</b>	<b>1.0</b>	<b>17.7</b>	<b>14.0</b>	<b>15.8</b>	<b>14.0</b>	<b>9%</b>	
Inpatient Restoration	APR. 2015	59	1.8	1.0	1.8	1.0	37.2	16.0	38.6	44.0	24%
	MAY. 2015	63	1.8	1.0	2.1	1.0	35.9	19.0	26.2	15.0	25%
	JUN. 2015	39	1.7	1.0	2.1	1.0	16.8	8.0	34.2	25.0	7%
	JUL. 2015	78	1.7	1.0	2.1	1.0	16.1	10.0	20.8	15.0	25%
	AUG. 2015	63	2.1	1.0	2.1	1.0	22.5	19.0	23.6	33.0	24%
	SEP. 2015	82	1.7	1.0	2.0	1.0	24.3	15.0	23.0	14.0	26%
	OCT. 2015	76	1.8	1.0	2.1	1.0	21.2	23.0	32.1	45.0	20%
	NOV. 2015	58	1.2	1.0	1.4	1.0	31.9	28.0	33.5	47.0	24%
	DEC. 2015	66	1.5	1.0	2.0	1.0	27.3	22.0	39.0	48.0	19%
	JAN. 2016	61	2.7	0.0	2.9	0.0	29.2	18.5	33.6	44.0	23%
	FEB. 2016	63	2.7	1.0	3.3	1.0	24.2	21.0	33.1	41.0	14%
	MAR. 2016	77	2.0	0.0	2.5	0.0	25.9	27.0	28.3	21.0	30%
	APR. 2016	64	1.9	0.0	2.2	0.0	23.5	20.5	37.4	46.0	13%
	MAY. 2016	70	1.7	0.0	2.0	0.0	23.1	21.5	29.0	24.5	25%
	JUN. 2016	69	1.4	0.0	1.5	0.0	22.1	17.0	26.6	22.0	11%
JUL. 2016	68	1.7	0.0	1.7	0.0	11.8	6.0	21.8	18.0	14%	
<b>AUG. 2016</b>	<b>93</b>	<b>1.5</b>	<b>0.0</b>	<b>1.7</b>	<b>0.0</b>	<b>12.3</b>	<b>13.0</b>	<b>13.1</b>	<b>10.0</b>	<b>24%</b>	
<b>SEP. 2016</b>	<b>92</b>	<b>1.1</b>	<b>0.0</b>	<b>1.3</b>	<b>0.0</b>	<b>16.3</b>	<b>15.0</b>	<b>17.0</b>	<b>14.0</b>	<b>14%</b>	

\*Denotes the percent complete within 14 days or less for Jail-based evaluations in July and August 2016 based on 9th Circuit Court ruling.

TABLE 2. Class Member Status Eastern State Hospital

EASTERN STATE HOSPITAL		Court Orders Signed	Days from order signature to:								Percent complete within 7 days of order
			hospital receipt of order		hospital receipt of discovery		end of month for incomplete referrals		completion		
			Average	Median	Average	Median	Average	Median	Average	Median	
Jail-based Evaluation	APR. 2015	38	4.6	1.0	8.6	5.0	28.1	28.0	61.3	57.0	0%
	MAY. 2015	37	4.3	1.0	8.8	6.0	37.0	33.0	56.9	57.0	0%
	JUN. 2015	38	4.1	1.0	8.3	6.0	38.0	39.0	65.6	64.0	0%
	JUL. 2015	45	4.2	1.0	8.9	6.0	32.6	30.0	66.5	64.0	0%
	AUG. 2015	32	2.4	1.0	6.4	5.0	33.4	32.0	57.7	56.0	3%
	SEP. 2015	51	2.3	1.0	4.9	4.0	29.1	14.0	53.5	55.0	3%
	OCT. 2015	33	1.9	0.0	4.9	4.0	16.4	10.0	39.5	40.0	3%
	NOV. 2015	32	1.8	0.0	5.9	5.0	28.3	26.0	47.4	49.0	0%
	DEC. 2015	48	1.7	0.0	3.2	1.0	21.7	18.0	38.7	35.0	3%
	JAN. 2016	46	4.7	0.0	7.4	1.0	13.4	9.0	36.6	27.5	10%
	FEB. 2016	39	1.4	0.0	2.0	1.0	10.4	6.0	15.5	12.0	25%
	MAR. 2016	66	1.4	0.0	1.3	1.0	11.8	8.0	12.6	10.0	16%
	APR. 2016	39	1.4	0.0	1.7	0.0	11.0	6.5	14.5	12.0	11%
	MAY. 2016	46	2.0	0.0	2.3	0.0	13.7	8.0	15.0	11.5	16%
	JUN. 2016	63	1.4	0.0	1.6	0.0	8.2	7.0	14.1	13.0	7%
JUL. 2016	46	2.0	0.5	2.2	1.0	11.3	9.0	16.0	14.0	32%*	
<b>AUG. 2016</b>	<b>66</b>	<b>0.9</b>	<b>0.0</b>	<b>1.1</b>	<b>0.0</b>	<b>6.3</b>	<b>6.0</b>	<b>14.4</b>	<b>14.0</b>	<b>38%*</b>	
<b>SEP. 2016</b>	<b>49</b>	<b>0.9</b>	<b>0.0</b>	<b>1.0</b>	<b>0.0</b>	<b>10.1</b>	<b>9.0</b>	<b>14.5</b>	<b>14.0</b>	<b>55%</b>	
Inpatient Evaluation	APR. 2015	9	8.9	1.0	13.9	5.0	47.9	43.0	56.3	59.0	0%
	MAY. 2015	4	10.1	1.0	14.2	5.0	65.8	61.0	69.5	69.5	0%
	JUN. 2015	4	7.7	1.0	11.1	5.0	75.2	68.0	89.9	102.0	0%
	JUL. 2015	2	7.5	1.0	11.4	5.0	50.9	14.0	91.8	81.0	0%
	AUG. 2015	5	10.2	1.0	19.6	5.0	44.5	31.0	78.2	80.0	0%
	SEP. 2015	5	6.7	1.0	10.2	4.0	42.6	47.0	32.0	32.0	0%
	OCT. 2015	8	2.0	1.0	7.9	6.0	28.9	16.0	61.1	70.0	0%
	NOV. 2015	3	2.8	0.0	9.6	7.0	44.2	46.0	49.0	49.0	0%
	DEC. 2015	12	2.4	1.0	4.2	2.0	21.1	20.5	83.6	84.0	0%
	JAN. 2016	7	5.4	1.0	8.9	2.0	30.9	31.0	52.9	51.0	0%
	FEB. 2016	2	12.9	1.0	16.3	2.0	47.5	31.0	50.9	56.0	0%
	MAR. 2016	5	15.5	1.0	16.3	1.0	19.2	15.5	69.2	45.0	0%
	APR. 2016	2	4.9	0.5	5.6	1.0	7.5	7.5	44.0	39.0	0%
	MAY. 2016	2	0.3	0.0	0.3	0.0	0.0	0.0	12.5	11.5	50%
	JUN. 2016	7	2.5	0.0	2.5	0.0	10.0	9.0	11.4	11.0	13%
JUL. 2016	2	3.1	1.0	3.5	1.0	4.0	4.0	20.2	20.5	14%	
<b>AUG. 2016</b>	<b>12</b>	<b>1.2</b>	<b>0.0</b>	<b>1.3</b>	<b>0.0</b>	<b>1.3</b>	<b>1.0</b>	<b>4.9</b>	<b>6.0</b>	<b>100%</b>	
<b>SEP. 2016</b>	<b>9</b>	<b>1.6</b>	<b>0.0</b>	<b>1.9</b>	<b>1.0</b>	<b>3.0</b>	<b>3.0</b>	<b>6.4</b>	<b>6.0</b>	<b>77%</b>	
Inpatient Restoration	APR. 2015	12	6.8	1.0	8.1	1.0	25.3	22.0	0.0	0.0	100%
	MAY. 2015	3	6.3	1.0	7.9	2.0	35.0	41.0	54.7	62.0	0%
	JUN. 2015	4	0.6	1.0	1.8	1.0	45.3	39.0	46.0	56.0	20%
	JUL. 2015	11	1.3	0.0	4.5	2.0	16.2	11.0	45.3	56.0	33%
	AUG. 2015	15	1.6	0.0	5.7	3.0	26.4	27.0	35.5	35.5	50%
	SEP. 2015	7	1.5	0.0	4.6	1.0	37.2	35.0	20.4	1.0	57%
	OCT. 2015	10	3.2	0.0	6.4	4.0	45.6	37.0	87.4	93.0	0%
	NOV. 2015	9	2.4	0.0	4.1	2.0	51.7	48.0	90.8	92.0	0%
	DEC. 2015	6	3.8	0.0	4.2	0.5	26.3	20.0	84.7	86.5	0%
	JAN. 2016	15	2.3	0.0	2.7	0.0	31.1	19.0	53.8	58.0	25%
	FEB. 2016	18	2.0	0.0	2.3	0.0	24.2	24.0	55.8	43.5	0%
	MAR. 2016	12	1.1	0.0	1.1	0.0	27.7	23.0	45.2	46.5	0%
	APR. 2016	12	1.5	0.0	1.7	1.0	16.3	11.5	30.4	31.0	0%
	MAY. 2016	18	1.5	0.0	1.6	0.0	10.2	13.0	9.9	7.0	53%
	JUN. 2016	20	0.4	0.0	0.4	0.0	7.8	10.0	9.5	9.5	22%
JUL. 2016	11	0.7	0.0	0.7	0.0	2.0	2.0	7.2	5.0	60%	
<b>AUG. 2016</b>	<b>7</b>	<b>0.4</b>	<b>0.0</b>	<b>0.4</b>	<b>0.0</b>	<b>0.0</b>	<b>0.0</b>	<b>4.6</b>	<b>5.5</b>	<b>100%</b>	
<b>SEP. 2016</b>	<b>20</b>	<b>0.3</b>	<b>0.0</b>	<b>0.3</b>	<b>0.0</b>	<b>6.3</b>	<b>2.0</b>	<b>4.5</b>	<b>5.0</b>	<b>80%</b>	

\*Denotes the percent complete within 14 days or less for Jail-based evaluations in July and August 2016 based on 9th Circuit Court ruling.

TABLE 3. Class Member Status at Western and Eastern State Hospital (Totals)

TOTALS BOTH HOSPITALS		Court Orders Signed	Days from order signature to:								Percent complete within 7 days of order
			hospital receipt of order		hospital receipt of discovery		end of month for incomplete referrals		completion		
			Average	Median	Average	Median	Average	Median	Average	Median	
Jail-based Evaluation	APR. 2015	214	2.1	0.0	3.5	1.0	17.8	10.0	20.3	14.0	12%
	MAY. 2015	217	2.1	0.0	3.2	1.0	22.1	13.0	18.2	12.0	14%
	JUN. 2015	250	2.3	1.0	3.6	1.0	20.8	13.0	24.1	17.0	9%
	JUL. 2015	281	2.0	0.0	3.3	1.0	17.9	11.0	26.5	19.0	5%
	AUG. 2015	217	2.0	0.0	3.0	1.0	19.7	13.0	25.4	21.0	6%
	SEP. 2015	253	1.8	0.0	2.5	1.0	16.0	9.0	22.9	18.0	9%
	OCT. 2015	246	1.9	0.0	2.5	1.0	16.6	11.0	19.2	16.0	17%
	NOV. 2015	196	1.8	0.0	2.8	1.0	21.6	17.0	20.5	16.0	23%
	DEC. 2015	243	1.6	0.0	2.1	0.0	16.2	10.0	20.4	15.0	11%
	JAN. 2016	227	1.8	0.0	2.5	0.0	12.2	6.0	19.0	13.0	23%
	FEB. 2016	243	0.7	0.0	0.8	0.0	7.4	5.0	11.0	8.0	42%
	MAR. 2016	285	0.9	0.0	0.9	0.0	8.2	6.0	9.7	7.0	51%
	APR. 2016	239	0.9	0.0	1.0	0.0	7.7	5.0	10.0	8.0	48%
	MAY. 2016	259	1.0	0.0	1.1	0.0	8.3	6.0	10.6	9.0	44%
	JUN. 2016	278	1.1	0.0	1.2	0.0	9.5	7.0	11.4	9.0	26%
JUL. 2016	274	0.9	0.0	1.0	0.0	9.2	6.0	12.9	10.0	44%*	
<b>AUG. 2016</b>	<b>295</b>	<b>0.8</b>	<b>0.0</b>	<b>0.9</b>	<b>0.0</b>	<b>7.2</b>	<b>6.0</b>	<b>13.4</b>	<b>12.0</b>	<b>49%*</b>	
<b>SEP. 2016</b>	<b>287</b>	<b>0.6</b>	<b>0.0</b>	<b>0.8</b>	<b>0.0</b>	<b>8.1</b>	<b>8.0</b>	<b>12.3</b>	<b>11.0</b>	<b>44%</b>	
Inpatient Evaluation	APR. 2015	19	7.8	1.0	11.0	3.0	39.9	33.0	45.1	48.5	9%
	MAY. 2015	15	7.3	1.0	9.7	3.0	55.3	47.0	50.9	25.0	5%
	JUN. 2015	14	5.9	1.0	8.0	3.0	65.0	54.0	44.4	18.0	15%
	JUL. 2015	17	5.7	1.0	7.8	3.0	49.9	15.0	14.8	15.0	20%
	AUG. 2015	20	6.9	1.0	8.4	2.0	33.0	17.0	53.9	29.0	5%
	SEP. 2015	20	4.3	1.0	5.7	1.0	39.4	22.0	20.4	20.0	10%
	OCT. 2015	25	2.4	1.0	4.3	1.0	27.6	19.0	30.8	24.0	0%
	NOV. 2015	17	2.0	1.0	3.9	1.0	30.8	18.0	26.4	22.0	5%
	DEC. 2015	23	3.3	1.0	4.1	1.0	17.8	14.0	47.5	29.0	6%
	JAN. 2016	20	4.8	1.0	6.6	1.0	27.0	23.0	33.7	29.0	0%
	FEB. 2016	18	7.7	1.0	9.0	1.0	24.5	12.0	30.6	22.0	5%
	MAR. 2016	23	6.7	1.0	6.9	1.0	12.6	9.0	26.6	16.0	8%
	APR. 2016	22	1.7	0.0	1.8	0.0	11.2	9.0	24.2	21.0	4%
	MAY. 2016	20	1.5	0.0	1.5	0.0	9.5	6.0	17.8	20.0	22%
	JUN. 2016	23	3.2	1.0	3.2	1.0	11.4	8.0	21.9	23.0	3%
JUL. 2016	21	4.3	1.0	4.3	1.0	7.2	4.0	16.6	14.0	8%	
<b>AUG. 2016</b>	<b>45</b>	<b>2.5</b>	<b>0.5</b>	<b>2.5</b>	<b>0.5</b>	<b>10.6</b>	<b>9.0</b>	<b>11.8</b>	<b>11.5</b>	<b>29%</b>	
<b>SEP. 2016</b>	<b>30</b>	<b>2.3</b>	<b>1.0</b>	<b>2.4</b>	<b>1.0</b>	<b>16.8</b>	<b>14.0</b>	<b>12.3</b>	<b>10.5</b>	<b>27%</b>	
Inpatient Restoration	APR. 2015	71	1.5	0.0	2.2	1.0	35.3	16.0	37.6	43.0	26%
	MAY. 2015	66	1.5	0.0	1.9	0.0	35.8	20.0	27.8	18.0	24%
	JUN. 2015	43	1.6	0.0	2.0	1.0	20.6	13.0	34.9	25.0	20%
	JUL. 2015	89	1.4	0.0	1.9	0.0	16.1	10.0	24.5	20.0	26%
	AUG. 2015	78	1.9	0.0	2.4	0.0	23.5	20.0	24.0	33.0	25%
	SEP. 2015	89	1.6	0.0	2.1	0.0	27.6	21.0	22.7	13.0	29%
	OCT. 2015	86	2.1	1.0	2.9	1.0	26.9	25.0	32.1	45.0	20%
	NOV. 2015	67	1.5	1.0	2.0	1.0	37.2	34.0	42.1	49.0	21%
	DEC. 2015	72	1.8	1.0	2.3	1.0	27.5	23.0	47.4	52.0	15%
	JAN. 2016	76	2.6	0.0	2.8	0.0	29.6	19.0	37.5	46.0	23%
	FEB. 2016	81	3.3	0.0	3.8	1.0	24.2	21.0	37.1	41.0	12%
	MAR. 2016	89	1.3	0.0	2.2	0.0	26.5	24.0	31.8	39	24%
	APR. 2016	76	1.7	0.0	2	0.0	22.9	22.0	35.5	41	10%
	MAY. 2016	88	1.7	0.0	1.9	0.0	22.1	20.0	25.2	19	31%
	JUN. 2016	89	1.2	0.0	1.3	0.0	21	15.0	23	14.5	13%
JUL. 2016	79	1.6	0.0	1.8	0.0	11.4	6.0	20.4	13.0	19%	
<b>AUG. 2016</b>	<b>100</b>	<b>1.4</b>	<b>0.0</b>	<b>1.6</b>	<b>0.0</b>	<b>12.6</b>	<b>13.0</b>	<b>11.8</b>	<b>11.5</b>	<b>28%</b>	
<b>SEP. 2016</b>	<b>112</b>	<b>1.0</b>	<b>0.0</b>	<b>1.1</b>	<b>0.0</b>	<b>16.0</b>	<b>15.0</b>	<b>14.7</b>	<b>12.0</b>	<b>24%</b>	

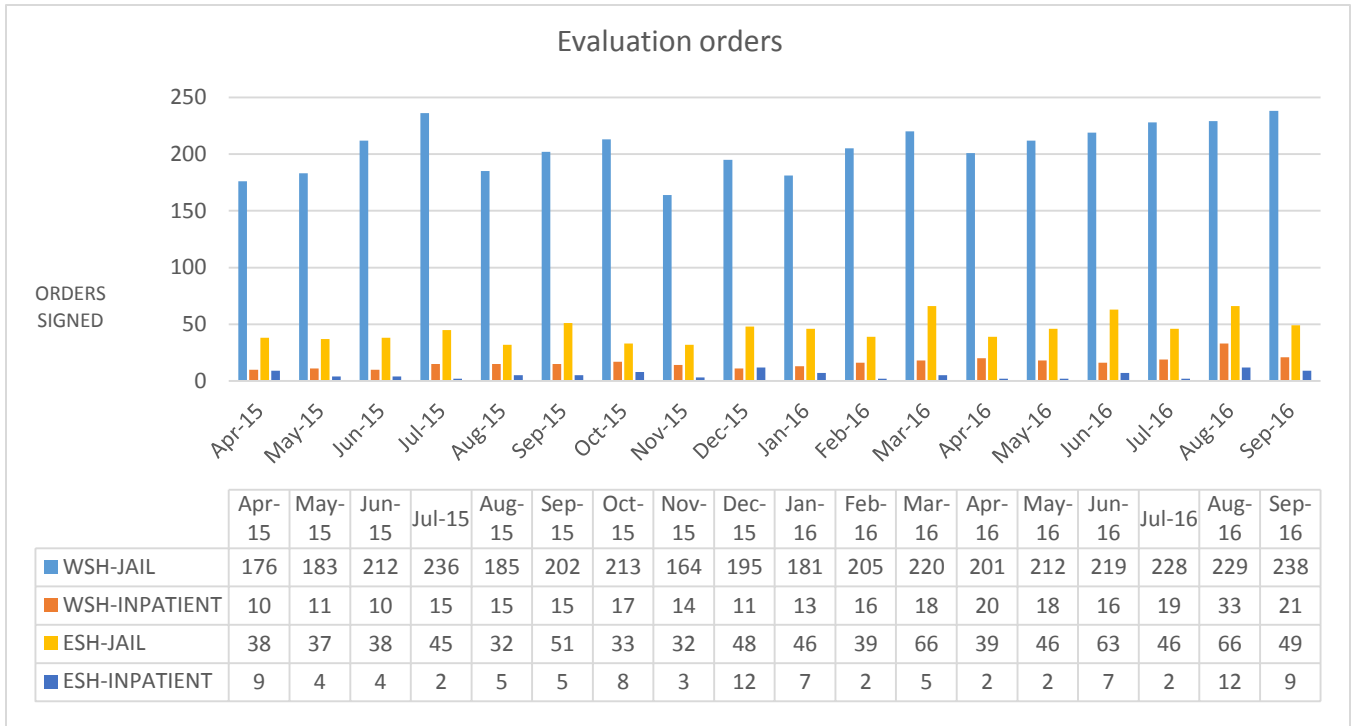
\*Denotes the percent complete within 14 days or less for Jail-based evaluations in July and August 2016 based on 9th Circuit Court ruling.



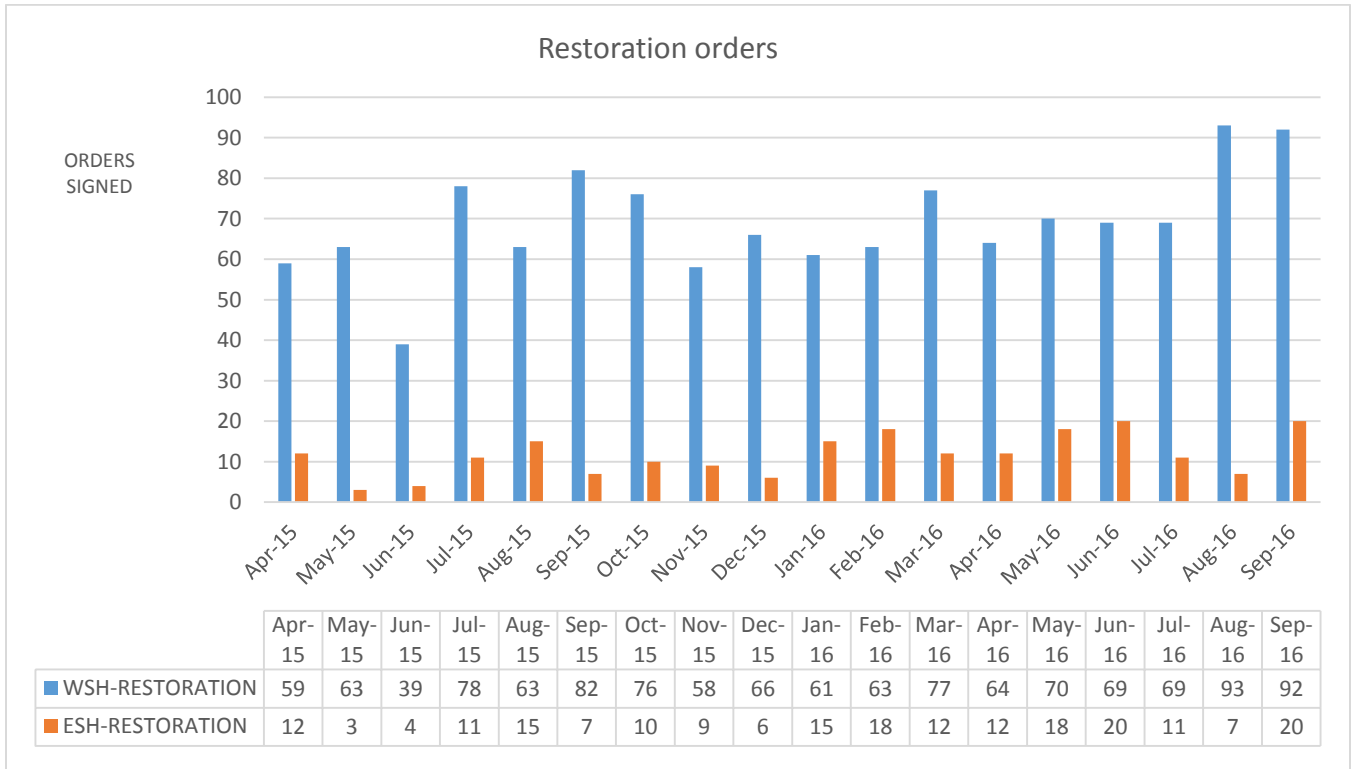
## CLASS MEMBER STATUS DATA GRAPHS

**NOTE:** September data are “first look” and are subject to change.

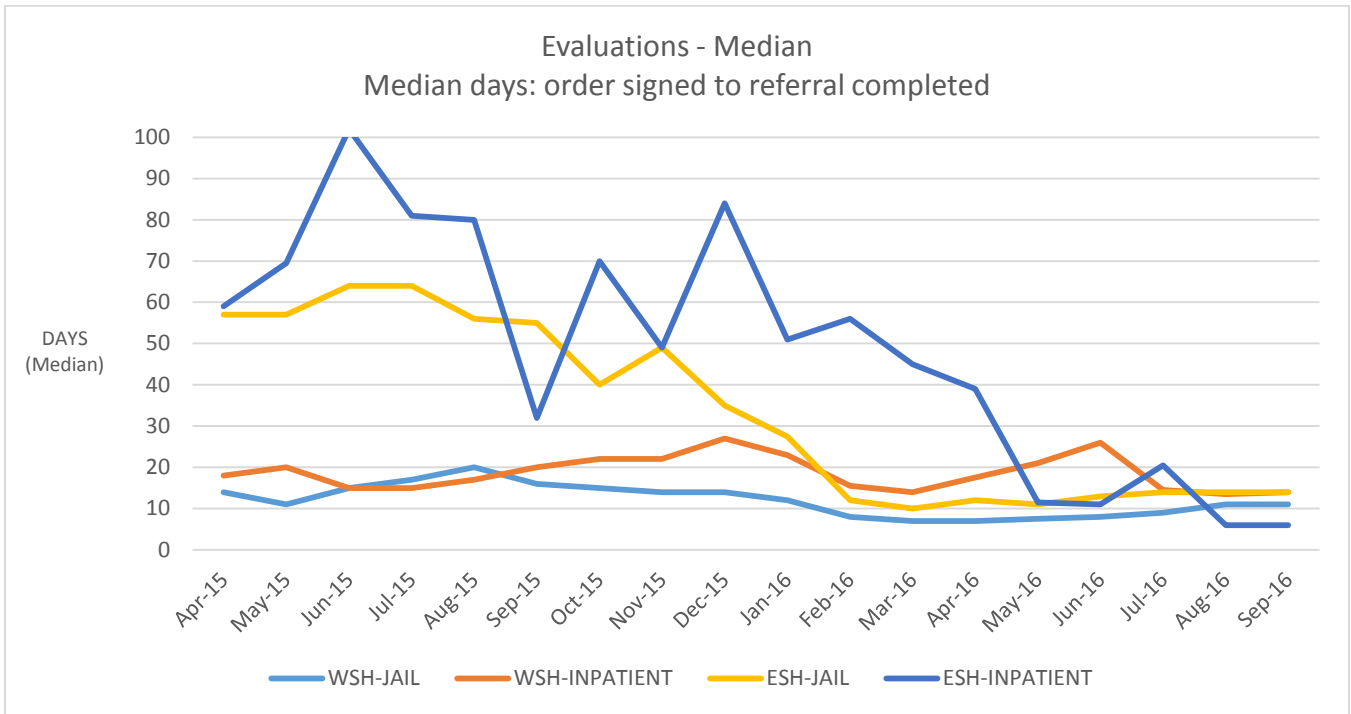
**FIGURE 1. Evaluation Orders**



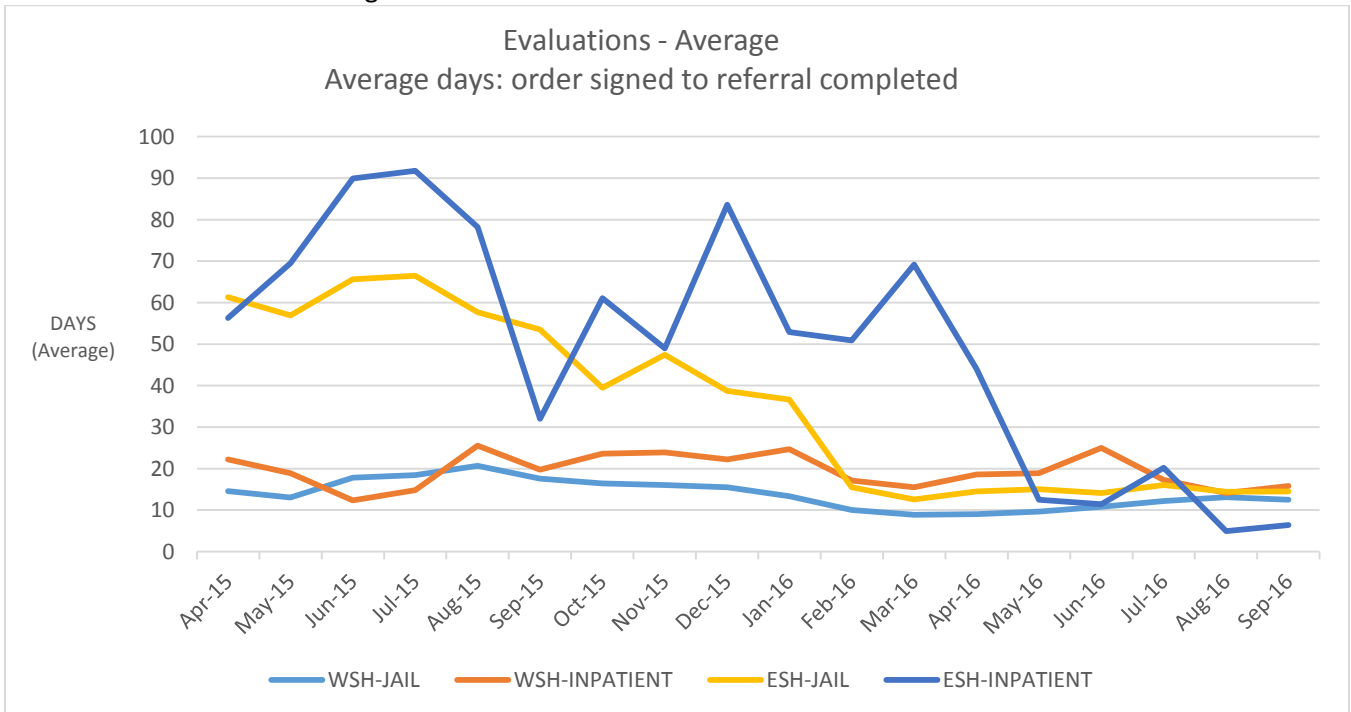
**FIGURE 2. Restoration Orders**



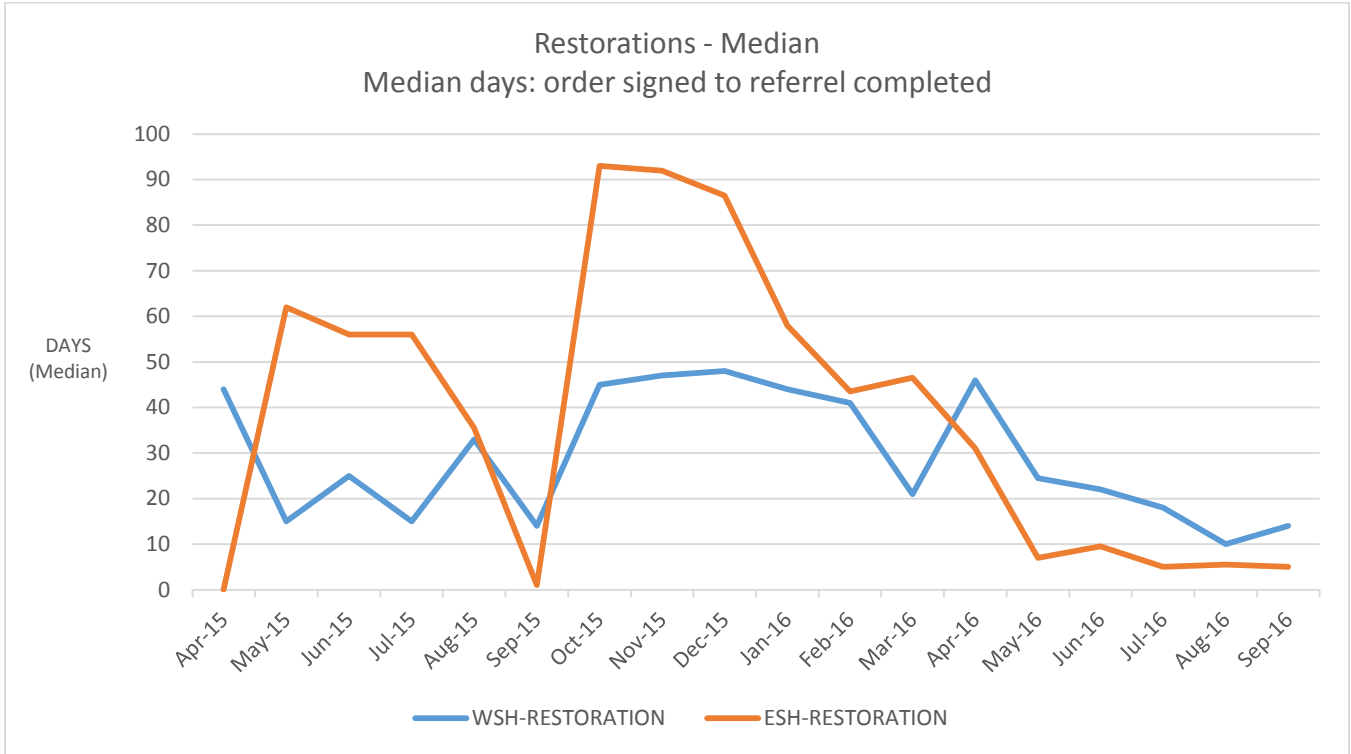
**FIGURE 3. Evaluations – Median**



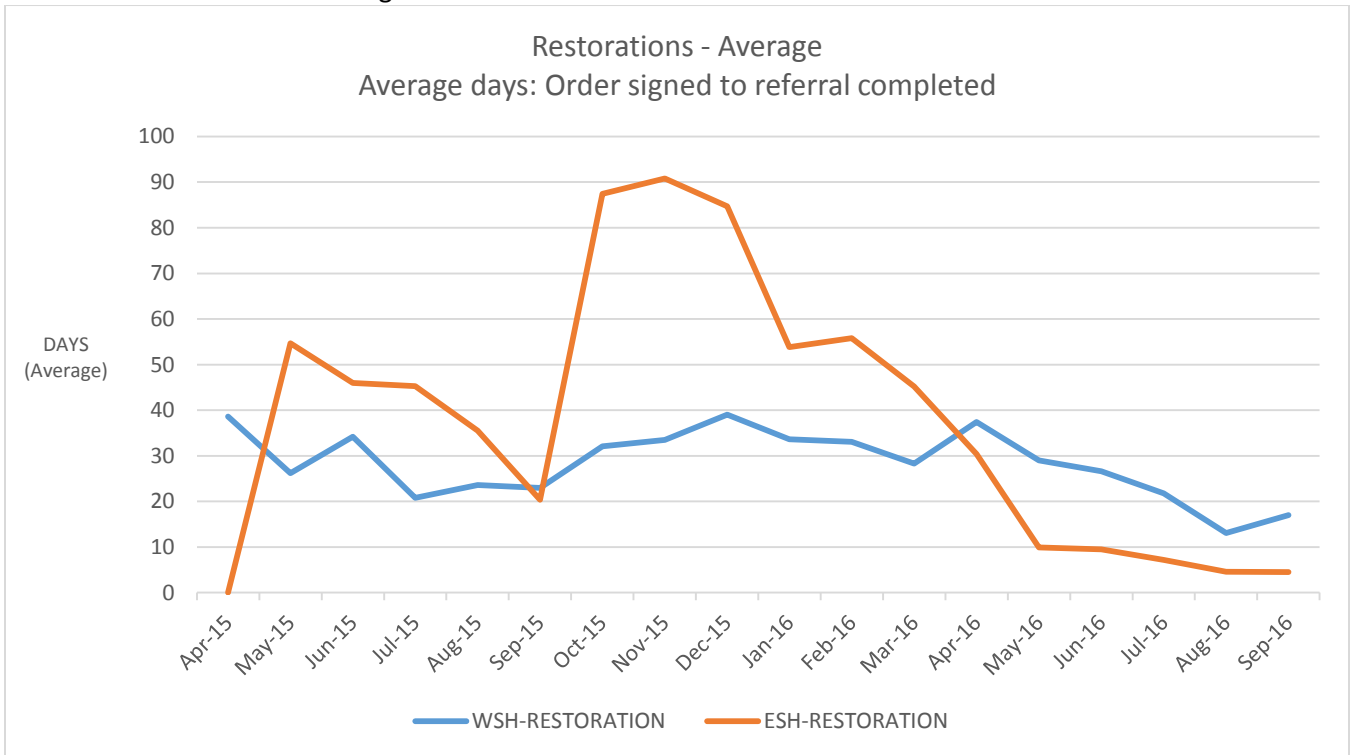
**FIGURE 4. Evaluations – Average**



**FIGURE 5. Restorations - Median**



**FIGURE 6. Restorations – Average**



DSHS provided additional performance data to the court during the June 20-22, 2016 hearing. These data, including the September 2016 update to the data, are shown in Table 1 on page 5. **NOTE: These data (percent days or less) are based on the month that the court order was signed and will therefore be different from the data shown in Tables 1-3, which is based on the month the order packet was completed.** September numbers are first look, and percentages will increase as many cases (those with orders at the end of the month) will close within the fourteen day window.

**TABLE 4.** Summary of jail evaluations, in-patient evaluations, and restorations by month since February 2016.

TOTAL COMPLETED JAIL EVALUATIONS BY MONTH COURT SIGNED			
MONTH	14 DAYS OR LESS	TOTAL ORDERS SIGNED	PERCENT 14 DAYS OR LESS
Feb-16	196	244	80.3%
Mar-16	244	288	84.7%
Apr-16	202	239	84.5%
May-16	209	259	80.7%
Jun-16	189	282	67.0%
Jul-16	195	273	71.4%
Aug-16	205	295	69.5%
<b>Sep</b>	<b>120</b>	<b>287</b>	<b>41.8%</b>
TOTAL ADMITTED INPATIENT EVALUATIONS BY MONTH OF ORDER SIGNED			
MONTH	7 DAYS OR LESS	TOTAL ORDERS SIGNED	PERCENT 7 DAYS OR LESS
Feb-16	1	19	5.3%
Mar-16	2	30	6.7%
Apr-16	3	22	13.6%
May-16	4	22	18.2%
Jun-16	0	25	0.0%
Jul-16	4	20	20.0%
Aug-16	16	45	35.6%
<b>Sep-16</b>	<b>10</b>	<b>30</b>	<b>33.3%</b>
TOTAL ADMITTED RESTORATIONS BY MONTH COURT ORDER SIGNED			
MONTH	7 DAYS OR LESS	TOTAL ORDERS SIGNED	PERCENT 7 DAYS OR LESS
Feb-16	7	78	9.0%
Mar-16	20	98	20.4%
Apr-16	12	76	15.8%
May-16	24	84	28.6%
Jun-16	22	90	24.4%
Jul-16	28	79	35.4%
Aug-16	34	102	33.3%
<b>Sep-16</b>	<b>33</b>	<b>112</b>	<b>29.5%</b>

## RESOURCES REQUIRED TO PROVIDE TIMELY COMPETENCY SERVICES

---

### Need Projections and Bed Capacity

The investment made by the Legislature in the 15-17 biennial budget, and the short and long-term strategies that are being undertaken, will enable Washington to provide competency services in accordance with the established time limits. Washington is making every effort to provide competency services within the seven-day and fourteen-day standards as soon as it is possible.

Compliance projections were initially based on the estimates and data included in previous monthly reports, the Long Term Plan dated July 2015, and the May 2016 revised Long Term Plan. An updated projection model has been developed and preliminary results were submitted to Dr. Danna Mauch on July 29, 2016. Improvements to this model are underway and include:

1. Utilization of more historical data - 12 months (vs. 6 months) of daily historical data (August 2015 – July 2016);
2. Employed statistical models that allow for dynamic interactions among the factors in projections;
3. Incorporated growth demand for new orders into the model that were represented by
  - (a) Mental health prevalence estimate among WA's projected arrest population, and
  - (b) An 8% annual increase in new orders
4. Accounted for seasonality in the model.

OFMHS plans to submit an additional draft of the model as it is refined and ultimately finalized.

OFMHS is currently hiring for 4 inpatient forensic evaluators at WSH, 2 inpatient evaluators at ESH, 1 outstation evaluator for Yakima, 1 outstation evaluator for Thurston, and 3 supervisor positions. OFMHS is also working on establishing a support position at WSH for evaluators.

## TRUEBLOOD KEY ACCOMPLISHMENTS – SEPTEMBER 2016

---

### RECRUITMENT

- Union contract negotiations must be completed by midnight on October 1st. The Coalition - psychiatrists, physicians and pharmacists and WFSE - psychologists, forensic evaluators as well as the majority of direct care staff except for nurses, have bargaining dates scheduled through mid-September. SEIU contract negotiations have concluded. It is important to note that all of the contracts are subject to legislative approval.
- A recruitment effort for forensic psychologists and forensic psychologist supervisors is underway for the OFMHS. An aggressive outreach strategy has identified a number of well qualified candidates throughout the month of August – usually the slowest recruiting month in the year. Interviewing of quality candidates has begun.
- The Talent Acquisition team has recruited 1100 vetted candidates to fill 178 positions at WSH by November 1. With the exception of psychiatrists and physicians, DSHS has more than enough candidates to fill all vacant positions. Related updates include:
  - Recruitment efforts for psychologists, LPNs, PSNs, RN 2/3s, MHTs and PSAs at WSH have continued to attract new applicants. From July 1 through September 30, 2016, 1046 candidates were recruited for these positions. The majority of these candidates (over 90%) have come from outside DSHS.

- The recruitment team at headquarters has continued aggressive outreach to potential candidates throughout the month of September. With continuous movement of hospital personnel, it is obvious that staffing at WSH will always be a full-time endeavor.
- Advertising continues for transitioning military candidates through October 2016.

### **RESIDENTIAL TREATMENT FACILITIES**

- As of September 30, the census at the Yakima Competency Restoration Program was 20, and they have admitted a total of 52 patients since opening. Nineteen patients have been recommended for early evaluation. Of these 19, 15 have been opined competent and 1 opined not likely restorable, 3 have not yet been evaluated and are yet to be assigned an evaluation date. Of the 35 discharged, 23 were opined competent; 5 opined not competent and re-admitted for a second period of restoration services; 2 opined to be not restorable, and 5 were transferred to receive restoration services at Western State Hospital
- As of September 30th, the census at the Maple Lane Competency Restoration Program was 26, and they have admitted a total of 86 patients since opening. Seventeen patients have been recommended for early evaluation. Of these 17, 13 have been opined competent and 1 opined not competent (patient was re-evaluated 9 days later and opined competent), 3 were referred for non-restorability and opined non-restorable. 60 patients have been discharged. Of the 60 discharged, 34 were opined competent, 9 opined not likely restorable; 10 not competent (misdemeanors without additional competency time available), 1 discharged to jail, and returned for a 2<sup>nd</sup> 90 after court, 1 was returned to jail, and 6 were transferred to receive restoration services at the state hospital.
- DSHS initially developed two primary pathways to refer a patient to an alternate site. One of these pathways includes identifying and screening patients from the WSH waitlist, and referring appropriate cases to the alternate sites for review and approval/denial. To date, this pathway has been able to achieve approximately 90% occupancy at the alternate sites. The other pathway includes considering current patients within the competency restoration wards at the two state hospitals.

### **MOBILE TECHNOLOGY SOLUTIONS FOR EVALUTORS**

- The use of VPN (Virtual Private Network) by the evaluators as they travel has been very positively received. Reports from the field confirm that it is a much more efficient method for submitting and reviewing dictation, editing their work, and that it reduces the turn-around time.
- Microphones for Dragon have been procured and will be deployed to expand beyond the pilot evaluators.

## TRUEBLOOD IMPLEMENTATION STEPS TAKEN AND PLANNED—JULY 2016

Task	Key Milestones	Status / End Dates	Anticipated Outcome & Assumptions	Results Achieved & Barriers to Completion
<b>Court Appointed Monitor Coordination</b>				
Monthly Reports	Release 9/15 report	Complete	<ul style="list-style-type: none"> <li>Maintain compliance with the Court.</li> </ul>	<ul style="list-style-type: none"> <li>Released September 15 report to Stakeholders following review of Court Monitor.</li> </ul>
	Submit 10/15 Report	10/15/2016	<ul style="list-style-type: none"> <li>Use data to review and improve the provision of forensic services.</li> </ul>	<ul style="list-style-type: none"> <li>DSHS sent a memo to Dr. Mauch requesting a new report follow up process. Dr. Mauch has responded and approves of the process.</li> </ul>
<b>Legislative Coordination</b>				
Implement Engrossed Substitute Senate Bill (ESSB) 6656: Funding applications	Apply for funding from the Office of Financial Management (OFM) from the Governor's Behavioral Health Innovation Fund relating to the state hospitals' forensic systems.	Passed legislature. Expires on July 1, 2019 per Section 14.	<ul style="list-style-type: none"> <li>Section 5(2) requires OFM to contract with an external consultant to examine the current configuration and financing of the state hospital system and make recommendations on a number of different areas, including identification of the potential costs, benefits, and impacts associated with dividing one or both of the state hospitals into discrete hospitals to serve civil and forensic patients in separate facilities. The consultants' report is due to the Governor and Legislature by Oct. 1, 2016.</li> <li>Section 5(3) requires DSHS to contract for the services of an academic or independent state hospital psychiatric clinical care model consultant to examine the clinical role of staffing at the state hospitals. The consultants'</li> </ul>	<ul style="list-style-type: none"> <li>The Select Committee for Quality Improvement in State Hospitals met on Sept. 12, 2016, to discuss mental health initiatives, including jail diversion, workforce development, hospital staffing, geropsych and 14-day discharge, the Systems Improvement Agreement, behavioral health integration, and will review funding proposals through the Governor's Behavioral Health Innovation Fund. Meeting materials are available at: <a href="http://www.governor.wa.gov/issues/issues/health-care-human-services/select-committee-quality-improvement-instate-hospitals">http://www.governor.wa.gov/issues/issues/health-care-human-services/select-committee-quality-improvement-instate-hospitals</a></li> <li>DSHS contracted with OTB Solutions Group to provide consulting services to examine the clinical role of staffing within the two adult state psychiatric hospitals. OTB will present its recommendations to the Select Committee in October 2016.</li> <li>OFM contracted with Public Consulting Group to provide the information requested in section 5 of</li> </ul>

Task	Key Milestones	Status / End Dates	Anticipated Outcome & Assumptions	Results Achieved & Barriers to Completion
			<p>report is due to the Governor and Legislature by Oct. 1, 2016.</p> <ul style="list-style-type: none"> <li>Section 6 creates the Governor's Behavioral Health Innovation Fund in the state treasury. Only the director of financial management or designee may authorize expenditures from that Fund, which are provided solely to improve quality of care, patient outcomes, patient and staff safety, and the efficiency of operations at the state hospitals.</li> </ul>	<p>ESSB 6656. Final implementation and transition plans are due 11/15/2016.</p> <ul style="list-style-type: none"> <li>Jail Diversion Consultant: The Governor's Office executed a contract with Joplin consulting to examine how to best divert persons with mental illness from the criminal justice system and identify appropriate funding mechanisms. Joplin consulting started the process of interviewing key stakeholders and sending out a survey during the month of August. On 8/26, Dr. Kinlen and the Liaison participated in a conference call with Lore Joplin. DSHS reviewed current diversion efforts by OFMHS and provided recommendations to the consultant group for next steps. The final recommendations report is due 10/1/16.</li> </ul>
<p>Consult with DOH about draft legislation requiring DOH certification of forensic evaluators to determine the need for a sunrise review</p>	<p>Consult DOH</p>	<p>Ongoing</p>	<ul style="list-style-type: none"> <li>Expanded pool of forensic evaluators would help improve timeliness. Licensure would provide quality assurance and create professional standards for forensic evaluators.</li> <li>Develop long-term certification of forensic evaluators, consistent with the Trueblood Court Monitor's recommendations on mid- and long-term performance to implement a forensic certification program to sustain performance.</li> </ul>	<ul style="list-style-type: none"> <li>The DSHS/OFMHS forensic evaluation training and certification workgroup has proposed a plan to standardize training of forensic evaluators and to develop a certification program. The initial phase of the certification program will be to develop and evaluate a training/certification program for current state employees to inform state-wide implementation. Funding options/budget analysis are currently being evaluated. A state-wide certification program will require legislation. DSHS will continue to work with DOH regarding the next steps in considering evaluator certification. DOH has suggested that a sunrise review be conducted which requires a formal legislative request and additional DOH review.</li> </ul>
<p><b>Labor Coordination</b></p>				



Task	Key Milestones	Status / End Dates	Anticipated Outcome & Assumptions	Results Achieved & Barriers to Completion
Engage Labor Leaders and Members	Conduct ongoing bi-monthly meetings with Labor leaders	Ongoing	<ul style="list-style-type: none"> <li>• Discuss policy, budget and operational changes likely required to comply with the Trueblood requirements.</li> <li>• Obtain staff necessary to safely support operation of additional forensic and civil beds at the state hospitals.</li> <li>• Obtain necessary psychiatrists and physicians to supplement services proved by employees at Western State Hospital to safely support the operation of additional forensic and civil beds.</li> </ul>	<ul style="list-style-type: none"> <li>• All contract negotiations were completed and the contracts were ratified by their perspective members prior to midnight on October 1st. It is important to note that all of the contracts are subject to legislative approval.</li> </ul>
<b>Data Collection and Fiscal Modeling</b>				
Monthly report data collection	Identify and obtain needed data	Ongoing	<ul style="list-style-type: none"> <li>• Obtain data for monthly reports and develop standardized reports to inform policy development and implementation.</li> </ul>	Data collection is ongoing.
Institute data audit process	Review data and files of cases with anomalies and identify trends	Ongoing	<ul style="list-style-type: none"> <li>• Ensure completeness and accuracy of wait list data.</li> </ul>	Data validation process is ongoing.
Hire Data Architect Position	Recruit, hire and onboard	On hold	<ul style="list-style-type: none"> <li>• Build a technology solution to establish a common platform to transmit data between the State Hospitals and over 240 different jurisdictions to improve timeliness.</li> <li>• Provide hands-on partner training across the system.</li> </ul>	We continue to work with the Data Architect from WaTech while we search for qualified permanent candidates. This position has been difficult for DSHS administrations to identify qualified candidates. DSHS has adjusted its plan and will recruit a senior lead developer instead. This change in direction should yield a qualified candidate pool. The change was approved by DSHS Class and Compensation Team and recruitment is in process.

Task	Key Milestones	Status / End Dates	Anticipated Outcome & Assumptions	Results Achieved & Barriers to Completion
Forensic Data System Design/ Development	Build data models	First draft prepared	<ul style="list-style-type: none"> <li>• Integrated Forensic System with consistent data entry and tracking of all class members from creation of court order for mental competency evaluation through completion of evaluation and / or restoration (whichever is later).</li> <li>• Provide capability for access by evaluators to discovery documents and any status changes, regardless of location, to reduce delays.</li> <li>• Provide platform for quality reporting from single system, eliminating the variability currently inherent in leveraging legacy applications not meant for this purpose.</li> </ul>	<ul style="list-style-type: none"> <li>• Centralized Admission Desk Process flow initiated. This will be completed this month.</li> <li>• Updated to the Requirements Document for Diversion and Centralized Admissions.</li> <li>• DSHS Portfolio Assessment (risk and oversight) scheduled for October 10.</li> <li>• Additional updates to the Data Dictionary.</li> <li>• Requirements Traceability Matrix prepared. (This will be updated throughout the project.)</li> <li>• Five candidates have applied for the posted Web-Developer replacement position. In addition, another developer has been assigned to begin in mid-October from BHA headquarters. This recruitment has now commenced.</li> </ul>
	Finalized Gaps analysis	Complete		
	Finalized task list and timeline	Plan revised and updated through Design Components		
	Establish Project Governance charter	Presentation completed for Governance		
<b>Human Resources</b>				
Hire Office of Forensic Services HQ positions	Hire and Onboard	Ongoing	Provide infrastructure for forensic services system and improve effective and timely provision of competency services.	There are no vacancies in OFMHS HQ.
Hire additional hospital ward staff	Conduct targeted hiring events	In progress	Obtain required staff of all classes to safely and appropriately operate additional civil and forensic beds and to meet data collection, analysis and reporting needs.	<ul style="list-style-type: none"> <li>• While recruitment efforts are progressing well for most positions at WSH (and BHA), we continue to struggle with physician and psychiatrist recruitment. Discussion is underway regarding</li> </ul>

Task	Key Milestones	Status / End Dates	Anticipated Outcome & Assumptions	Results Achieved & Barriers to Completion
	Pursue contracting			bringing a private physician recruitment firm on board to assist. • Nurse recruitment is going well - a recent hiring event was able to be cancelled due to positive recruitment numbers.
<b>Competency Evaluation</b>				
Hire two new Forensic Services Supervisors	Complete PDs	Completed	• Will provide needed additional supervisors of Forensic Evaluator staff; leading to improved effectiveness and efficiency of evaluators.	• Interviews started in August and are hoping to have positions offered by the end of September. A third supervisor position was approved and is also being recruited.
	Recruit	In progress		
	Hire	TBD		
Build capacity for out-station sites	Site agreements	In progress	• Increased capacity at out-station sites will reduce wait time for evaluation.	• The Tri-Cities outstation is operational. Discussions regarding need for additional sites continue with a focus in Yakima and Thurston counties.
	Out-station sites operational	Completed		
Coordinate with forensic mental health system partners	Present at the Washington Association of Sheriffs and Police Chiefs (WASPC) annual conference	5/24/16	• Conversations with select jails close to hospitals or already designated for outstation sites are focused on creating space for evaluations on a regularly scheduled basis and ability to transport to state hospital. Secondarily to discuss with local defenders associations regarding predictable availability to attend with clients; courts for coordination of timely transmittal of orders and documents; and local mental health agencies for additional supports and perhaps space where that is identified as a challenge.	• Two of the four prosecutorial diversion programs have formally begun accepting referrals. Our next quarterly meeting will be in October. • Office of Forensic Mental Health Services Director and Liaison Specialist are participating as members of the WINGS Public Guardianship Steering Committee with the Administrative Office of the Courts (AOC) to explore the possibility of utilizing public guardianship and other less restrictive options to the benefit of the forensic population. Liaison participated in an August 1 in person meeting. Future teleconferences scheduled on 10/24; 11/26).

Task	Key Milestones	Status / End Dates	Anticipated Outcome & Assumptions	Results Achieved & Barriers to Completion
			<ul style="list-style-type: none"> <li>• Presentations at the WASPC conference will provide opportunity to inform about impacts of Trueblood decision and make connections with members for future planning to facilitate transfer and access to reduce wait times and provide competency services.</li> </ul>	<ul style="list-style-type: none"> <li>• Liaison participates in an Outreach and Re-Entry Committee lead by the Health Care Authority (HCA), which is exploring diversion options for individuals with behavioral health issues involved in the forensic system. HCA is soliciting input from other agencies for ideas on pilot programming. The OFMHS and HCA are meeting 10/12 to discuss any potential duplication and if possible, any collaborative possibilities.</li> <li>• DSHS, in collaboration with partners, launched a pilot coordinated evaluation calendar (PCEC) in King County Superior Court on May 31, 2016. PCEC has scheduled four additional individuals since the 7/28 check-in meeting, making the total served 17. It was determined that there has been some benefit to real-time scheduling of evaluations at the time of the hearing. There have been some barriers identified during the pilot, mainly the waitlist and technical issues. The next check-in meeting will take place October 11.</li> <li>• Liaison reached out to Clallam County to schedule a community meeting. Due to scheduling conflicts with Clallam County stakeholders, the meeting will not take place until February 15, 2017.</li> <li>• Liaison participated in the Council of Public Defense’s Mental Health Summit on 9/23.</li> <li>• The Governor’s Office has contracted the services of Joplin Consulting to perform an assessment of jail diversion options throughout the state. OFMHS is working very closely with the</li> </ul>

Task	Key Milestones	Status / End Dates	Anticipated Outcome & Assumptions	Results Achieved & Barriers to Completion
				<p>consultants to keep them abreast of court mandates and plans currently in progress.</p> <ul style="list-style-type: none"> <li>• OFMHS presented on diversion and triage at the 9/29 BHO Monthly Administrator's meeting</li> <li>• OFMHS is working in collaboration with plaintiffs, AGs, and Court Monitor on the 14-Day Jail Evaluation Compliance Plan.</li> <li>• OFMHS reached out to Pierce County presiding judge, counsel, sheriff, and executive office on 9/19 regarding the use of the incorrect court order. We received a response on 9/28 and are working on scheduling a meeting with partners in October</li> </ul>
Continue current county-conducted evaluation system until 2018	Establish quality criteria for evaluation reports	Ongoing	Obtain data needed from counties in order to meet court ordered reporting requirements.	The OFMHS quality management team has initiated reviews of forensic evaluation reports from 10.77 ordered evaluations. The team has developed a checklist for evaluating forensic evaluation reports.
Test and Distribute Mobile Equipment	Test a remote access system	Complete	<ul style="list-style-type: none"> <li>• Provide out-stationed evaluators with the capacity to access DSHS systems and electronic health records remotely.</li> </ul>	<ul style="list-style-type: none"> <li>• All planned mobile equipment has been deployed to the evaluators. Very positive results noted by participating evaluators.</li> </ul>
	Pilot a remote access system to be used in the field	Complete	<ul style="list-style-type: none"> <li>• Support more rapid entry of evaluation information and reduce duplicate data entry.</li> </ul>	
	Expand Pilot to all Evaluators	Complete		

Task	Key Milestones	Status / End Dates	Anticipated Outcome & Assumptions	Results Achieved & Barriers to Completion
Explore and pursue triage system possibilities	Roll out Phase II	7/15/2016	Establish an efficient evaluation to identify individuals who: need inpatient services due to serious mental health condition; clearly do not require inpatient evaluation services; or are clearly competent due to changes in their condition since the issuance of an order for evaluation (such as no longer drug affected).	<ul style="list-style-type: none"> <li>• DSHS sent a letter to Dr. Mauch on 8/3 requesting assistance and consultation related to the development and implementation of a robust triage plan. DSHS submitted a follow up request for response via email on 9/1. Dr. Mauch submitted recommendations on 9/3.</li> <li>• DSHS provided three webinars to stakeholders related to the Triage Consultation and Expedited Admissions (8/10, 8/15, 8/25). Notice of webinars were distributed through the WAPA, WACDL, WDA, and WASPC listserv, as well as contacts lists provided by plaintiffs’ counsel. There were 32 attendees; this number includes several attendees within an office. We will continue to report on progress made with counties based on feedback received. Liaison continues to provide consultation and webinars to entities and individuals who were not able to attend the webinars.</li> <li>• On 9/9, OFMHS and the hospitals convened to discuss gaps in the current triage process and next steps of Phase II. It was decided to continue the current process, while pulling together a team of subject matter experts both at the hospital and stakeholder level to develop a comprehensive triage plan. A meeting was scheduled to take place on 10/4 for the Triage Planning and Implementation Team.</li> <li>• As of 9/30/2016, DSHS has received twenty-one triage referrals from jail staff and approved eighteen. Two referrals were admitted to WSH prior to completion of the triage process, and one</li> </ul>

Task	Key Milestones	Status / End Dates	Anticipated Outcome & Assumptions	Results Achieved & Barriers to Completion
				did not have an order for restoration at the time of referral.
<b>Competency Restoration</b>				
WSH; E2 and F3 Wards: add 30 beds	Bed Occupancy	TBD	Serves overall plan to add 90 beds and expand State Hospital bed capacity to meet Court ordered compliance date.	Due to DSHS plans to meet the requirements set out by CMS, plans to open F3 have been postponed.
Provide Restoration Treatment at the Maple Lane Competency Restoration Program	Open Maple Lane facility	Complete	<ul style="list-style-type: none"> <li>Identify alternate facility capacity to meet <i>Trueblood</i> compliance.</li> <li>Any competency restoration treatment program at Maple Lane is anticipated to transfer to operation at a State Hospital before DOC would be housing inmates on that campus.</li> </ul>	As of September 30th, the census at the Maple Lane Competency Restoration Program was 26, and they have admitted a total of 86 patients since opening. Seventeen patients have been recommended for early evaluation. Of these 17, 13 have been opined competent and 1 opined not competent (patient was re-evaluated 9 days later and opined competent), 3 were referred for non-restorability and opined non-restorable. 60 patients have been discharged. Of the 60 discharged, 34 were opined competent, 9 opined not likely restorable; 10 not competent (misdemeanors without additional competency time available), 1 discharged to jail, and returned for a 2 <sup>nd</sup> 90 after court, 1 was returned to jail, and 6 were transferred to receive restoration services at the state hospital.
	Restore patients to competency	Ongoing		

Task	Key Milestones	Status / End Dates	Anticipated Outcome & Assumptions	Results Achieved & Barriers to Completion
Provide Restoration Treatment at the Yakima Competency Restoration Program.	Open Yakima facility	Complete	<ul style="list-style-type: none"> <li>• Anticipated duration of one year and possible one year extension.</li> <li>• Identify alternate facility capacity to support timely competency services that will meet the Trueblood compliance deadline of 05/27/16.</li> </ul>	<p>As of September 30, the census at the Yakima Competency Restoration Program was 20, and they have admitted a total of 52 patients since opening. Nineteen patients have been recommended for early evaluation. Of these 19, 15 have been opined competent and 1 opined not likely restorable, 3 have not yet been evaluated and are yet to be assigned an evaluation date. Of the 35 discharged, 23 were opined competent; 5 opined not competent and re-admitted for a second period of restoration services; 2 opined to be not restorable, and 5 were transferred to receive restoration services at Western State Hospital</p>
	Restore patients to competency	Ongoing		
County transport of patients	Coordinate with counties to develop transport protocols	Ongoing	Ensure timely transport of patients to support delivery of competency services as directed in court order.	<ul style="list-style-type: none"> <li>• We continue to work with counties on transporting patients to the alternate sites.</li> <li>• A letter to the courts, attorneys and jails is in use informing parties that an available bed has been identified at an RTF and offering that bed to a defendant. The letter requests that the parties submit an amended court order that complies with state law.</li> </ul>
<b>Diversion Alternatives</b>				



Task	Key Milestones	Status / End Dates	Anticipated Outcome & Assumptions	Results Achieved & Barriers to Completion
Implement 2E2SSB 5177 (2015) provisions for dismissal of charges & referral to treatment	Diversion Programs are Operational	Ongoing	Prosecutor can dismiss criminal charges without prejudice & refer to community-based mental health services.	DSHS has received fully executed contracts from all four contractors in May 2016. The prosecutorial diversion contracts require quarterly participation in meetings convened by DSHS to discuss the progress of projects, troubleshoot barriers, and share resources and ideas. Quarterly update will be available in October.
Increase diversion opportunities	Governor's Office to contract with diversion consultant	In Process	Hire a consultant to identify how to best divert persons with mental illness from the criminal justice system and identify appropriate funding mechanisms with appropriate stakeholders.	<ul style="list-style-type: none"> <li>• A contract with a Diversion Consultant has been executed. OFMHS has had several phone conferences with the consultants and will be meeting them in person on 10/21.</li> <li>• DSHS is participating in an HCA/DOC/DSHS Re-entry Workgroup to discuss service options for individuals transitioning from jail to the community.</li> </ul>

## FEBRUARY 8, 2016 COURT ORDER STATUS REPORT/UPDATES

The status updates to the February 8, 2016 Court Order are shown below.

NOTE: This tracker does not include all items previously reported as complete.

<b>1. Implement a triage system to sort class members waiting for in-jail evaluations by the acuity of their mental illnesses and their current manifestations, by the seriousness of their crimes, and by the amount of resources their cases require, by:</b>			
Requirements	Date	Status	Progress Notes
A. Producing a triage plan for review and comment	March 1, 2016	Complete	Complete
B. Putting the triage plan into effect, after accounting for the comments received	March 15, 2016	Complete	Complete
C. Reporting on the implementation and effectiveness of the triage plan in Defendants' monthly reports to the Court Monitor	Beginning April 15, 2016, ongoing	Ongoing	See 3c below and review task progress in "explore and pursue triage system possibilities."
<b>2. Eliminate the backlog of class members currently waiting for in-jail evaluations by:</b>			
A. Formally notifying DSHS's forensic evaluators and Pierce County's panel evaluators of plan to eliminate the backlog of people waiting for in-jail evaluations and requesting their help in doing so, and providing plans to get evaluations done through the use of extra duty pay and other methods available	February 15, 2016	Complete	Complete
B. Preparing a list of all backlog cases, organized by jail and by county	March 1, 2016	Complete	Complete
C. Finalizing recruitment of evaluators to aid in the backlog elimination effort and setting a schedule for the evaluation of each backlog case	March 1, 2016	Complete	Complete

D. Initiating the backlog elimination effort	March 7, 2016	Complete	Complete
E. Completing evaluations for all backlog cases (any patient waiting more than seven days at the end of the month).	April 15, 2016, Ongoing	Ongoing	Of the 287 jail evaluation orders signed in September, 120 were completed within 14 days which is 41.8%
<b>3. Implement a triage system to sort class members waiting for in-hospital evaluations by the acuity of their mental illnesses and their current manifestations, by the seriousness of their crimes, and by the amount of resources their cases require, by:</b>			
C. Reporting on the implementation and effectiveness of the triage plan in Defendants' monthly reports to the Court Monitor	Beginning April 15, 2016, ongoing	Ongoing	As of 9/30/2016, DSHS has received twenty-one triage referrals – 7 from Thurston, 5 from Snohomish, 2 from Island, 3 from Clark, 1 from Kitsap, and 3 from King. Eighteen were approved. Two referrals were admitted to WSH prior to completion of the triage process, and one did not have an order for restoration at the time of referral. On average, it takes 8 days for an individual to be expedited through the triage system. Much of this time is spent on pre-admission Sell hearing scheduling. The turnaround time for material review from both the triage consultant and the Chief Medical Officer has been quick - within 3 days. Additional information and updates on the triage system may be found in the “explore and pursue triage system possibilities” task in the Trueblood Implementation Steps matrix above.
<b>4. Implement a triage system to sort class members waiting for restoration services by the acuity of their mental illnesses and their current manifestations, by the seriousness of their crimes, and by the amount of resources their cases require, by:</b>			
C. Reporting on the implementation and effectiveness of the triage plan in Defendants' monthly reports to the Court Monitor	Beginning April 15, 2016	Complete	As of 9/30/2016, DSHS has received twenty -one triage referrals – 7 from Thurston, 5 from Snohomish, 2 from Island, 3 from King, 3 from Clark, and one from Kitsap. . Eighteen were approved. Two referrals were admitted to WSH prior to completion of the triage process, and one did not have an order for restoration at the time of referral. On average, it takes 8 days for an individual to be expedited through the triage system. Much of this time is spent on pre-admission Sell hearing scheduling. The turnaround time for material review from both the triage

			consultant and the Chief Medical Officer has been quick - within 3 days. Additional information and updates on the triage system may be found in the “explore and pursue triage system possibilities” task in the Trueblood Implementation Steps matrix above.
<b>5. Report on the implementation status of the CMS Plan of Correction by:</b>			
B. Reporting on the implementation status in Defendants’ monthly reports to the Court Monitor	Beginning March 15, 2016, ongoing	Ongoing	On June 2, 2016, DSHS finalized negotiations with CMS to enter into a 13 month Systems Improvement Agreement (SIA) to allow Western State Hospital (WSH) the time and guidance needed to fix systemic operating problems and put more focus on patient treatment and overall safety. Signing the SIA rescinds the termination of CMS’s Medicare Provider Agreement with WSH, but allows CMS to reissue termination if it finds that the hospital is not progressing toward full compliance with the Medicare Conditions of Participation (CoPs), a requirement for federal funding. The Department does not anticipate expansion of bed capacity at WSH to be implemented during the 13 month SIA.
<b>6. Plan for recruiting and staffing 30 beds at WSH after compliance with CMS’s terms of participation is achieved in March by:</b>			
C. Reporting on the implementation status of the plan and timeframe in Defendants’ monthly reports to the Court Monitor	Beginning April 15, 2016, ongoing	Ongoing	DSHS has taken the actions necessary to support the transition of restoration beds back to the state hospitals by July of 2017. Next steps towards this effort will begin in January 2017.
<b>8. Remove barriers to the expenditure of the \$4.8 million in currently allocated diversion funds by:</b>			
D. Executing contracts for implementation by the selected providers	April 15, 2016	Complete	DSHS will issue a supplemental budget request in October to release the unused federal funds as state funds. This will allow DSHS greater flexibility in funding diversion projects. As a next step, the Governor will review all state agency budget requests and develop his budget proposal to the Legislature. The Legislature will then build and pass a budget. We will have to wait until the next budget is passed to know whether the funding is provided. The Legislative session begins in January 2017.
<b>10. Develop a reliable and valid client-level data system to support better management and accountability of the forensic services system by:</b>			

E. Implementing revisions to the existing system or initiating development of a new forensic data and management information system	May 27, 2016	Ongoing	The Governance Board met September 9 and confirmed that we will employ a centralized schedule system and that evaluator productivity measures are to be included in the new system.
---	--------------	---------	---

## **JULY 7, 2016 CONTEMPT ORDER STATUS UPDATES**

---

The three status updates required in the July 7th Court Order are below.

1. Monetary sanctions – fines are imposed on a per class member, per day basis. On the 15<sup>th</sup> of every month, DSHS is required to submit contempt fines data to the court. These data will be submitted to the court on October 15, 2016 and will be included in this report when finalized as Appendix I.
2. Diversion plans – DSHS is ordered to develop, in consultation with the Court Monitor, plans for the expenditure of the contempt fines. The Diversion Workgroup submitted the court ordered Diversion Plan on August 19, 2016. The first submission to the court was due on August 20.
3. Wait time data – DSHS shall submit to the Court wait time data in a manner identical to the data submitted on June 17, 2016 in the declaration of Bryan Zolnikov. These data are included in this report in Table 4.

## **AUGUST 15, 2016 ORDER MODIFYING PERMANENT INJUNCTION AS TO IN JAIL COMPETENCY EVALUATIONS**

---

Pursuant to the August 15, 2016 court order, DSHS must provide in-jail competency evaluations within 14 days of the signing of a court order. Where an in-jail evaluation cannot be completed within 14 days for those individuals where good cause applies (i.e., delay due to clinical reasons, attorney, interpreter, or defense expert), an extension from the ordering court must be secured or DSHS must immediately admit the individual to a state hospital to finish conducting the evaluation. In order to comply with the reporting requirements of the Court's order, DSHS identified a need to revise both the current process used for seeking extensions from the criminal court, as well as the data collected during that process. Since the August 15<sup>th</sup> court order, DSHS has identified a series of necessary changes that will enable DSHS to comply with the order, to include the following:

1. Develop a list of data elements needed to comply with the court order to include additional delay data;
2. Develop a data dictionary to define the data elements needed;
3. Develop a process of reporting the information to the courts for the extension requests;
4. Identify the cutoff date for seeking an extension;
5. Develop a standardized form that can be used for seeking good cause exceptions;
6. Develop an operating procedure to guide evaluators through the new good cause process;
7. Coordinate with the Attorney General's Office to ensure adequate representation;
8. Develop a process for collecting the data to report to the courts for the extensions and to maintain for monthly reporting;
9. Develop a model for the delays and the data pertaining to the delays;
10. Modify the current IT systems or develop a new database in which to maintain the information once all above steps are completed.

To date, DSHS has completed identifying the data elements, a process for the evaluators to collect the data that will be entered and reported to the courts, and a draft of the data dictionary. The process of reporting the information to the courts and identifying a cutoff date for seeking an extension is near completion and is with the Attorney General's Office to finalize the standardized forms, the operating procedure, and coordination for AAG representation was completed. It is anticipated that additional changes to this form and procedure will be necessary as evaluators learn from using them. Interim steps for maintaining the data for monthly reporting have been identified and will be implemented using the current IT systems until the current IT system can be modified or a new database can be developed to maintain all of the necessary data.

## APPENDICES

**Appendix A: Class Member--Evaluation Information for August 2016**

Hospital	Class Member	County	Offense	Completi on Method or Incompl ete	Order Signed Date	Number of days from signed order to:			
						Order Received	Discovery	Complete	Incomplete to end of reporting period
ESH	6202	KITT	FELONY	FAX	6/16/2016	13	13	8/11/2016	.
ESH	6460	BENTON	FELONY	FAX	7/13/2016	1	1	8/3/2016	.
ESH	6471	SPOK	FELONY	FAX	7/20/2016	0	0	8/4/2016	.
ESH	6473	Garfield	MISD	FAX	7/20/2016	1	1	8/3/2016	.
ESH	6474	BENTON	FELONY	FAX	7/20/2016	1	0	8/3/2016	.
ESH	6476	BENTON	FELONY	FAX	7/21/2016	1	1	8/8/2016	.
ESH	6478	SPOK	FELONY	FAX	7/22/2016	0	0	8/5/2016	.
ESH	6479	YAKIMA	MISD	FAX	7/25/2016	1	1	8/4/2016	.
ESH	6480	YAKIMA	MISD	FAX	7/25/2016	1	0	8/4/2016	.
ESH	6481	SPOK	FELONY	FAX	7/25/2016	1	2	8/5/2016	.
ESH	6483	FRANK	MISD	FAX	7/26/2016	0	0	8/9/2016	.
ESH	6484	CHELAN	FELONY	FAX	7/26/2016	0	0	8/11/2016	.
ESH	6485	FRANK	MISD	FAX	7/26/2016	0	0	8/12/2016	.
ESH	6486	CHELAN	MISD	FAX	7/26/2016	1	1	8/3/2016	.
ESH	6488	STEVENS	FELONY	FAX	7/27/2016	0	0	8/10/2016	.
ESH	6490	FRANK	FELONY	FAX	7/27/2016	0	0	8/4/2016	.
ESH	6491	OAK	MISD	FAX	7/27/2016	1	1	8/16/2016	.
ESH	6492	ADAMS	FELONY	ADMIT	7/27/2016	0	0	8/2/2016	.
ESH	6493	PEND	FELONY	FAX	7/28/2016	0	0	8/5/2016	.
ESH	6494	SPOK	FELONY	FAX	7/28/2016	0	1	8/29/2016	.
ESH	6495	OAK	FELONY	FAX	7/28/2016	1	1	8/11/2016	.
ESH	6590	WALLA	FELONY	FAX	7/14/2016	4	4	8/2/2016	.

ESH	6591	SPOK	FELONY	FAX	7/19/2016	0	0	8/1/2016	.
ESH	6593	SPOK	FELONY	FAX	7/22/2016	0	0	8/16/2016	.
ESH	6594	SPOK	MISD	FAX	7/26/2016	0	0	8/4/2016	.
ESH	6595	ADAMS	FELONY	ADMIT	7/27/2016	0	0	8/2/2016	.
ESH	6598	SPOK	FELONY	FAX	7/27/2016	6	6	8/5/2016	.
ESH	6859	WALLA	FELONY	ADMIT	8/1/2016	0	1	8/4/2016	.
ESH	6860	DOUG	FELONY	FAX	8/1/2016	1	1	8/17/2016	.
ESH	6861	WHIT	MISD	FAX	8/1/2016	2	2	8/9/2016	.
ESH	6862	SPOK	MISD	FAX	8/2/2016	0	1	8/11/2016	.
ESH	6863	FRANK	MISD	FAX	8/2/2016	0	0	8/12/2016	.
ESH	6864	FRANK	FELONY	FAX	8/2/2016	0	0	8/12/2016	.
ESH	6865	SPOK	FELONY	FAX	8/2/2016	0	0	8/19/2016	.
ESH	6866	CHELAN	MISD	ADMIT	8/2/2016	1	1	8/5/2016	.
ESH	6867	BENTON	FELONY	FAX	8/3/2016	1	1	8/12/2016	.
ESH	6868	YAKIMA	MISD	FAX	8/4/2016	0	0	8/22/2016	.
ESH	6869	SPOK	FELONY	FAX	8/4/2016	1	1	8/22/2016	.
ESH	6870	SPOK	MISD	FAX	8/5/2016	0	0	8/19/2016	.
ESH	6871	SPOK	FELONY	FAX	8/8/2016	1	1	8/23/2016	.
ESH	6872	YAKIMA	FELONY	FAX	8/9/2016	0	1	8/24/2016	.
ESH	6873	SPOK	FELONY	ADMIT	8/9/2016	0	0	8/12/2016	.
ESH	6874	FRANK	FELONY	FAX	8/9/2016	1	1	8/25/2016	.
ESH	6875	SPOK	MISD	FAX	8/10/2016	0	0	8/24/2016	.
ESH	6876	SPOK	MISD	FAX	8/10/2016	0	1	8/22/2016	.
ESH	6877	SPOK	FELONY	ADMIT	8/11/2016	0	0	8/17/2016	.
ESH	6878	YAKIMA	MISD	FAX	8/12/2016	3	0	8/24/2016	.
ESH	6879	YAKIMA	FELONY	FAX	8/12/2016	3	0	8/29/2016	.
ESH	6880	SPOK	MISD	FAX	8/12/2016	6	6	8/22/2016	.
ESH	6882	YAKIMA	MISD	FAX	8/15/2016	0	0	8/26/2016	.
ESH	6883	YAKIMA	MISD	FAX	8/15/2016	0	0	.	16
ESH	6884	FRANK	FELONY	ADMIT	8/16/2016	0	0	8/23/2016	.



ESH	6885	BENTON	MISD	FAX	8/17/2016	0	0	8/30/2016	.
ESH	6886	OAK	FELONY	FAX	8/17/2016	0	0	.	14
ESH	6887	BENTON	MISD	FAX	8/17/2016	0	0	8/29/2016	.
ESH	6888	YAKIMA	FELONY	FAX	8/17/2016	1	1	.	14
ESH	6889	SPOK	FELONY	FAX	8/17/2016	1	1	.	14
ESH	6890	SPOK	MISD	FAX	8/17/2016	1	1	8/22/2016	.
ESH	6891	YAKIMA	MISD	FAX	8/17/2016	1	1	8/30/2016	.
ESH	6892	COLU	FELONY	FAX	8/18/2016	0	0	.	13
ESH	6893	SPOK	MISD	FAX	8/18/2016	0	0	.	13
ESH	6894	ASOTIN	FELONY	FAX	8/18/2016	0	1	.	13
ESH	6895	YAKIMA	FELONY	FAX	8/18/2016	1	4	.	13
ESH	6896	YAKIMA	FELONY	ADMIT	8/18/2016	5	5	8/24/2016	.
ESH	6897	YAKIMA	FELONY	ADMIT	8/18/2016	5	5	8/24/2016	.
ESH	6898	YAKIMA	FELONY	FAX	8/19/2016	3	3	.	12
ESH	6899	DOUG	FELONY	FAX	8/22/2016	0	1	.	9
ESH	6900	SPOK	FELONY	FAX	8/22/2016	1	1	.	9
ESH	6901	STEVENS	FELONY	FAX	8/23/2016	0	0	8/31/2016	.
ESH	6902	SPOK	MISD	FAX	8/23/2016	0	0	.	8
ESH	6903	FRANK	MISD	FAX	8/23/2016	0	0	.	8
ESH	6904	GRANT	FELONY	FAX	8/23/2016	1	1	.	8
ESH	6905	GRANT	MISD	FAX	8/24/2016	0	1	.	7
ESH	6906	BENTON	MISD	FAX	8/24/2016	0	0	.	7
ESH	6907	FRANK	FELONY	FAX	8/24/2016	0	0	.	7
ESH	6908	BENTON	MISD	FAX	8/24/2016	0	0	.	7
ESH	6909	YAKIMA	MISD	FAX	8/25/2016	0	0	.	6
ESH	6910	SPOK	MISD	FAX	8/25/2016	0	0	.	6
ESH	6912	SPOK	FELONY	FAX	8/26/2016	0	0	.	5
ESH	6913	SPOK	FELONY	ADMIT	8/26/2016	0	0	8/29/2016	.
ESH	7036	YAKIMA	FELONY	FAX	7/29/2016	3	13	8/12/2016	.
ESH	7037	YAKIMA	MISD	FAX	8/12/2016	3	0	8/24/2016	.

ESH	7038	SPOK	FELONY	FAX	8/14/2016	4	4	.	17
ESH	7039	CHELAN	MISD	FAX	8/16/2016	1	1	.	15
ESH	7040	OAK	FELONY	FAX	8/17/2016	0	0	8/31/2016	.
ESH	7041	COLU	FELONY	FAX	8/18/2016	0	0	8/30/2016	.
ESH	7042	SPOK	MISD	FAX	8/18/2016	0	0	8/31/2016	.
ESH	7043	YAKIMA	FELONY	FAX	8/18/2016	1	4	.	13
ESH	7044	YAKIMA	FELONY	FAX	8/19/2016	3	3	.	12
ESH	7045	BENTON	MISD	FAX	8/24/2016	7	7	.	7
ESH	7046	SPOK	FELONY	FAX	8/25/2016	1	1	.	6
ESH	7047	SPOK	FELONY	FAX	8/26/2016	0	0	.	5
ESH	7048	SPOK	FELONY	FAX	8/26/2016	0	0	.	5
ESH	7049	SPOK	FELONY	FAX	8/26/2016	3	3	.	5
ESH	7050	ASOTIN	FELONY	ADMIT	8/29/2016	1	1	.	2
ESH	7051	ASOTIN	FELONY	ADMIT	8/29/2016	1	1	.	2
ESH	7052	SPOK	MISD	FAX	8/29/2016	0	0	.	2
ESH	7053	DOUG	MISD	FAX	8/29/2016	0	0	.	2
ESH	7054	GRANT	FELONY	FAX	8/29/2016	1	1	.	2
ESH	7055	SPOK	FELONY	FAX	8/29/2016	0	2	.	2
ESH	7056	SPOK	MISD	ADMIT	8/30/2016	.	.	.	1
ESH	7057	SPOK	MISD	FAX	8/30/2016	0	0	.	1
ESH	7058	FRANK	MISD	FAX	8/30/2016	0	0	.	1
ESH	7059	FRANK	FELONY	FAX	8/30/2016	0	0	.	1
ESH	7060	FRANK	MISD	FAX	8/30/2016	0	0	.	1
ESH	7061	STEVENS	FELONY	FAX	8/30/2016	1	0	.	1
ESH	7062	FRANK	FELONY	FAX	8/30/2016	1	1	.	1
ESH	7063	COLU	FELONY	ADMIT	8/31/2016	.	.	.	0
ESH	7064	BENTON	MISD	FAX	8/31/2016	0	0	.	0
ESH	7065	SPOK	MISD	FAX	8/31/2016	0	0	.	0
ESH	7066	BENTON	MISD	FAX	8/31/2016	.	.	.	0
ESH	7067	SPOK	FELONY	FAX	8/31/2016	.	.	.	0

WSH	5608	CLALLAM	FELONY	FAXED	5/27/2016	4	4	8/11/2016	.
WSH	5983	WHAT	MISD	FAXED	6/23/2016	0	0	8/1/2016	.
WSH	6191	ISLAND	FELONY	FAXED	6/27/2016	3	3	8/2/2016	.
WSH	6222	WHAT	MISD	FAXED	7/1/2016	5	5	8/3/2016	.
WSH	6250	KING	FELONY	FAXED	7/6/2016	1	1	8/8/2016	.
WSH	6262	KING	MISD	FAXED	7/7/2016	0	0	8/3/2016	.
WSH	6291	KITSAP	FELONY	W/D	7/11/2016	0	0	8/25/2016	.
WSH	6301	WHAT	MISD	FAXED	7/12/2016	0	0	8/1/2016	.
WSH	6302	KING	FELONY	FAXED	7/12/2016	0	0	8/16/2016	.
WSH	6316	WHAT	FELONY	BED O	7/14/2016	5	5	8/9/2016	.
WSH	6317	WHAT	FELONY	FAXED	7/14/2016	0	0	8/22/2016	.
WSH	6318	KING	FELONY	FAXED	7/14/2016	13	13	8/3/2016	.
WSH	6329	KING	FELONY	BED O	7/15/2016	3	3	8/2/2016	.
WSH	6330	SNOHO	FELONY	FAXED	7/15/2016	0	0	8/22/2016	.
WSH	6331	WHAT	MISD	FAXED	7/15/2016	0	0	8/23/2016	.
WSH	6332	KING	MISD	FAXED	7/15/2016	0	0	8/2/2016	.
WSH	6333	SNOHO	MISD	W/D	7/15/2016	0	0	8/1/2016	.
WSH	6334	WHAT	MISD	FAXED	7/15/2016	3	3	8/2/2016	.
WSH	6335	CLALLAM	FELONY	FAXED	7/15/2016	5	5	8/9/2016	.
WSH	6341	KING	FELONY	FAXED	7/18/2016	0	0	8/3/2016	.
WSH	6342	SNOHO	MISD	FAXED	7/18/2016	0	0	8/5/2016	.
WSH	6343	SNOHO	FELONY	FAXED	7/18/2016	0	0	8/12/2016	.
WSH	6344	GRAYS	FELONY	FAXED	7/18/2016	0	.	8/9/2016	.
WSH	6345	SNOHO	MISD	FAXED	7/18/2016	0	0	8/3/2016	.
WSH	6360	PIERCE	FELONY	BED O	7/19/2016	1	1	8/1/2016	.
WSH	6361	COWL	FELONY	FAXED	7/19/2016	0	0	8/1/2016	.
WSH	6362	COWL	FELONY	FAXED	7/19/2016	0	0	8/3/2016	.
WSH	6367	KING	MISD	FAXED	7/20/2016	0	0	8/1/2016	.
WSH	6368	SNOHO	FELONY	FAXED	7/20/2016	0	0	8/5/2016	.
WSH	6369	KING	MISD	FAXED	7/20/2016	0	0	8/3/2016	.

WSH	6370	SNOHO	FELONY	FAXED	7/20/2016	0	0	8/12/2016	.
WSH	6378	SNOHO	MISD	FAXED	7/21/2016	0	0	8/5/2016	.
WSH	6379	KING	MISD	FAXED	7/21/2016	0	0	8/3/2016	.
WSH	6380	KING	FELONY	FAXED	7/21/2016	0	0	8/8/2016	.
WSH	6385	PIERCE	MISD	FAXED	7/22/2016	0	0	8/1/2016	.
WSH	6386	CLARK	FELONY	FAXED	7/22/2016	0	0	8/3/2016	.
WSH	6387	KING	MISD	FAXED	7/22/2016	0	0	8/11/2016	.
WSH	6388	KING	FELONY	FAXED	7/22/2016	0	0	8/15/2016	.
WSH	6389	SNOHO	MISD	TIC	7/22/2016	0	3	8/11/2016	.
WSH	6390	CLARK	MISD	FAXED	7/22/2016	0	0	8/9/2016	.
WSH	6391	WHAT	MISD	FAXED	7/22/2016	3	3	8/23/2016	.
WSH	6392	PACIFIC	FELONY	FAXED	7/22/2016	4	4	8/5/2016	.
WSH	6393	PACIFIC	FELONY	FAXED	7/22/2016	4	4	8/5/2016	.
WSH	6394	KING	MISD	W/D	7/23/2016	0	0	8/1/2016	.
WSH	6398	KING	MISD	FAXED	7/25/2016	0	0	8/8/2016	.
WSH	6399	KITSAP	MISD	FAXED	7/25/2016	0	0	8/11/2016	.
WSH	6400	KING	MISD	FAXED	7/25/2016	0	0	8/25/2016	.
WSH	6401	KING	MISD	FAXED	7/25/2016	0	0	8/5/2016	.
WSH	6402	PIERCE	MISD	FAXED	7/25/2016	1	1	8/3/2016	.
WSH	6403	SNOHO	MISD	FAXED	7/25/2016	1	1	8/4/2016	.
WSH	6404	THURS	FELONY	FAXED	7/25/2016	1	1	8/12/2016	.
WSH	6405	THURS	MISD	FAXED	7/26/2016	0	0	8/3/2016	.
WSH	6406	PIERCE	MISD	FAXED	7/26/2016	0	0	8/1/2016	.
WSH	6407	CLARK	MISD	FAXED	7/26/2016	0	0	8/5/2016	.
WSH	6408	PIERCE	MISD	FAXED	7/26/2016	0	0	8/4/2016	.
WSH	6409	COWL	MISD	FAXED	7/26/2016	0	0	8/5/2016	.
WSH	6410	KING	MISD	W/D	7/26/2016	0	0	8/31/2016	.
WSH	6411	KING	MISD	CLOSED	7/26/2016	0	0	8/5/2016	.
WSH	6412	PIERCE	MISD	FAXED	7/26/2016	0	0	8/3/2016	.
WSH	6413	CLARK	FELONY	FAXED	7/26/2016	0	0	8/9/2016	.

WSH	6414	MASON	FELONY	W/D	7/27/2016	0	0	8/1/2016	.
WSH	6415	WHAT	FELONY	FAXED	7/27/2016	0	0	8/12/2016	.
WSH	6416	KING	MISD	FAXED	7/27/2016	0	0	8/2/2016	.
WSH	6417	KING	FELONY	FAXED	7/27/2016	0	0	8/19/2016	.
WSH	6419	KING	MISD	FAXED	7/27/2016	0	0	8/1/2016	.
WSH	6420	KING	MISD	FAXED	7/27/2016	0	0	8/10/2016	.
WSH	6421	PIERCE	MISD	FAXED	7/27/2016	0	0	8/4/2016	.
WSH	6422	CLARK	FELONY	FAXED	7/27/2016	0	0	8/8/2016	.
WSH	6423	KITSAP	MISD	FAXED	7/27/2016	0	0	8/3/2016	.
WSH	6424	KING	FELONY	FAXED	7/27/2016	0	0	8/10/2016	.
WSH	6425	KING	FELONY	FAXED	7/27/2016	0	0	8/1/2016	.
WSH	6426	PIERCE	MISD	FAXED	7/27/2016	0	0	8/9/2016	.
WSH	6427	PACIFIC	FELONY	FAXED	7/27/2016	2	2	8/11/2016	.
WSH	6428	KING	MISD	FAXED	7/28/2016	0	0	8/3/2016	.
WSH	6429	KING	MISD	FAXED	7/28/2016	0	0	8/12/2016	.
WSH	6430	KING	FELONY	TIC	7/28/2016	0	0	8/10/2016	.
WSH	6431	CLARK	MISD	FAXED	7/28/2016	0	0	8/4/2016	.
WSH	6432	COWL	FELONY	FAXED	7/28/2016	0	0	8/5/2016	.
WSH	6433	PIERCE	MISD	FAXED	7/29/2016	0	0	8/1/2016	.
WSH	6434	KITSAP	MISD	FAXED	7/29/2016	0	0	8/8/2016	.
WSH	6435	KING	MISD	FAXED	7/29/2016	0	0	8/8/2016	.
WSH	6564	COWL	MISD	CNX	7/19/2016	7	7	8/24/2016	.
WSH	6565	PIERCE	FELONY	BED O	7/26/2016	23	23	8/30/2016	.
WSH	6566	SKAGIT	MISD	FAXED	7/26/2016	2	8	8/18/2016	.
WSH	6567	SNOHO	MISD	FAXED	7/26/2016	14	14	8/12/2016	.
WSH	6568	KING	FELONY	BED O	7/27/2016	1	1	8/11/2016	.
WSH	6569	KING	MISD	BED O	7/27/2016	2	2	8/8/2016	.
WSH	6570	SNOHO	MISD	W/D	7/27/2016	0	0	8/17/2016	.
WSH	6571	KING	MISD	FAXED	7/27/2016	0	0	8/10/2016	.
WSH	6572	LEWIS	MISD	TIC	7/27/2016	1	1	8/16/2016	.

WSH	6573	LEWIS	MISD	INCOM.	7/27/2016	20	20	.	35
WSH	6574	KING	MISD	FAXED	7/27/2016	2	2	8/4/2016	.
WSH	6575	PIERCE	MISD	W/D	7/27/2016	2	2	8/3/2016	.
WSH	6576	COWL	MISD	BED O	7/28/2016	0	0	8/22/2016	.
WSH	6577	KING	FELONY	BED O	7/28/2016	13	13	8/24/2016	.
WSH	6578	WHAT	FELONY	FAXED	7/28/2016	0	0	8/10/2016	.
WSH	6579	KING	FELONY	FAXED	7/28/2016	0	0	8/17/2016	.
WSH	6580	PIERCE	MISD	TIC	7/29/2016	0	0	8/3/2016	.
WSH	6581	WHAT	FELONY	BED O	7/29/2016	0	0	8/11/2016	.
WSH	6582	PIERCE	MISD	FAXED	7/29/2016	0	0	8/17/2016	.
WSH	6583	SKAGIT	FELONY	FAXED	7/29/2016	0	0	8/17/2016	.
WSH	6584	THURS	MISD	W/D	7/29/2016	0	0	8/10/2016	.
WSH	6585	PIERCE	FELONY	FAXED	7/29/2016	0	0	8/17/2016	.
WSH	6586	THURS	MISD	FAXED	7/29/2016	0	0	8/11/2016	.
WSH	6618	PIERCE	MISD	BED O	7/29/2016	6	6	8/19/2016	.
WSH	6619	KING	FELONY	BED O	8/1/2016	0	0	8/12/2016	.
WSH	6620	KING	MISD	BED O	8/1/2016	0	0	8/10/2016	.
WSH	6621	KING	MISD	FAXED	8/1/2016	0	0	8/3/2016	.
WSH	6622	CLARK	FELONY	FAXED	8/1/2016	0	0	8/4/2016	.
WSH	6623	KING	MISD	FAXED	8/1/2016	0	0	8/5/2016	.
WSH	6624	KING	MISD	FAXED	8/1/2016	0	0	8/8/2016	.
WSH	6625	KITSAP	FELONY	FAXED	8/1/2016	0	0	8/9/2016	.
WSH	6626	SNOHO	MISD	FAXED	8/1/2016	0	0	8/10/2016	.
WSH	6627	KITSAP	MISD	FAXED	8/1/2016	0	0	8/10/2016	.
WSH	6628	KING	MISD	FAXED	8/1/2016	0	1	8/11/2016	.
WSH	6629	KING	MISD	FAXED	8/1/2016	0	0	8/11/2016	.
WSH	6630	KING	MISD	FAXED	8/1/2016	0	0	8/12/2016	.
WSH	6631	KITSAP	FELONY	TIC	8/1/2016	0	0	8/15/2016	.
WSH	6632	KING	MISD	FAXED	8/1/2016	0	0	8/17/2016	.
WSH	6633	KING	MISD	FAXED	8/1/2016	1	1	8/17/2016	.

WSH	6634	KING	MISD	FAXED	8/1/2016	0	0	8/17/2016	.
WSH	6635	KING	MISD	FAXED	8/1/2016	0	0	8/25/2016	.
WSH	6636	PIERCE	FELONY	BED O	8/2/2016	0	0	8/2/2016	.
WSH	6637	PIERCE	FELONY	BED O	8/2/2016	0	0	8/2/2016	.
WSH	6638	PIERCE	FELONY	BED O	8/2/2016	0	0	8/2/2016	.
WSH	6639	THURS	FELONY	W/D	8/2/2016	0	0	8/4/2016	.
WSH	6640	SNOHO	MISD	FAXED	8/2/2016	0	0	8/8/2016	.
WSH	6641	CLARK	FELONY	FAXED	8/2/2016	0	0	8/9/2016	.
WSH	6642	KING	MISD	FAXED	8/2/2016	0	0	8/9/2016	.
WSH	6643	KITSAP	MISD	FAXED	8/2/2016	0	0	8/10/2016	.
WSH	6644	KITSAP	FELONY	FAXED	8/2/2016	1	1	8/10/2016	.
WSH	6645	SNOHO	MISD	FAXED	8/2/2016	0	0	8/10/2016	.
WSH	6646	KING	MISD	W/D	8/2/2016	0	0	8/16/2016	.
WSH	6647	KING	MISD	FAXED	8/2/2016	0	0	8/18/2016	.
WSH	6648	PIERCE	FELONY	BED O	8/3/2016	0	0	.	28
WSH	6649	KING	MISD	W/D	8/3/2016	0	0	8/10/2016	.
WSH	6650	SNOHO	MISD	FAXED	8/3/2016	1	1	8/12/2016	.
WSH	6651	PIERCE	MISD	FAXED	8/3/2016	1	1	8/12/2016	.
WSH	6652	SNOHO	FELONY	FAXED	8/3/2016	1	1	8/17/2016	.
WSH	6653	SNOHO	MISD	FAXED	8/3/2016	0	0	8/17/2016	.
WSH	6654	KING	FELONY	FAXED	8/3/2016	0	0	8/25/2016	.
WSH	6655	KING	FELONY	TIC	8/3/2016	0	0	8/30/2016	.
WSH	6656	KING	FELONY	CRIC	8/3/2016	0	0	.	28
WSH	6657	PIERCE	FELONY	FAXED	8/3/2016	1	1	.	28
WSH	6658	CLARK	FELONY	BED O	8/4/2016	0	0	8/17/2016	.
WSH	6659	KING	MISD	CANCEL	8/4/2016	20	20	.	27
WSH	6660	THURS	FELONY	FAXED	8/4/2016	0	0	8/11/2016	.
WSH	6661	COWL	FELONY	FAXED	8/4/2016	1	1	8/12/2016	.
WSH	6662	KING	MISD	FAXED	8/4/2016	0	0	8/19/2016	.
WSH	6663	WHAT	MISD	FAXED	8/4/2016	0	0	8/19/2016	.

WSH	6664	KING	MISD	TIC	8/4/2016	0	0	8/24/2016	.
WSH	6665	KING	MISD	FAXED	8/4/2016	0	0	8/25/2016	.
WSH	6666	KING	FELONY	TIC	8/4/2016	0	0	.	27
WSH	6667	THURS	MISD	CLOSED	8/5/2016	0	0	8/10/2016	.
WSH	6668	THURS	MISD	FAXED	8/5/2016	0	0	8/15/2016	.
WSH	6669	CLARK	MISD	FAXED	8/5/2016	0	0	8/16/2016	.
WSH	6670	ISLAND	FELONY	BED O	8/8/2016	1	1	8/24/2016	.
WSH	6671	ISLAND	FELONY	CANCEL	8/8/2016	0	0	8/29/2016	.
WSH	6672	PIERCE	FELONY	BED O	8/8/2016	0	0	8/16/2016	.
WSH	6673	KING	MISD	FAXED	8/8/2016	0	0	8/10/2016	.
WSH	6674	KITSAP	FELONY	TIC	8/8/2016	0	0	8/11/2016	.
WSH	6675	KITSAP	MISD	FAXED	8/8/2016	0	0	8/15/2016	.
WSH	6676	KING	FELONY	TIC	8/8/2016	0	0	8/16/2016	.
WSH	6677	KING	MISD	FAXED	8/8/2016	0	0	8/18/2016	.
WSH	6678	PIERCE	MISD	FAXED	8/8/2016	0	2	8/23/2016	.
WSH	6679	PIERCE	MISD	FAXED	8/8/2016	2	2	8/23/2016	.
WSH	6680	KING	MISD	FAXED	8/8/2016	0	0	8/24/2016	.
WSH	6681	SNOHO	FELONY	FAXED	8/8/2016	0	0	8/25/2016	.
WSH	6682	KING	FELONY	FAXED	8/8/2016	0	0	.	23
WSH	6683	COWL	FELONY	BED O	8/9/2016	7	7	.	22
WSH	6684	COWL	FELONY	TIC	8/9/2016	1	1	8/16/2016	.
WSH	6685	SNOHO	MISD	FAXED	8/9/2016	0	0	8/19/2016	.
WSH	6686	PIERCE	MISD	FAXED	8/9/2016	0	0	8/22/2016	.
WSH	6687	KING	MISD	FAXED	8/9/2016	0	0	8/23/2016	.
WSH	6688	JEFF	MISD	FAXED	8/9/2016	8	8	8/25/2016	.
WSH	6689	WHAT	MISD	BED O	8/10/2016	0	0	8/25/2016	.
WSH	6690	PIERCE	FELONY	BED O	8/10/2016	1	1	8/25/2016	.
WSH	6691	KING	MISD	FAXED	8/10/2016	0	0	8/11/2016	.
WSH	6692	CLARK	FELONY	FAXED	8/10/2016	0	0	8/11/2016	.
WSH	6693	LEWIS	MISD	FAXED	8/10/2016	0	0	8/17/2016	.



WSH	6694	THURS	FELONY	FAXED	8/10/2016	0	0	8/17/2016	.
WSH	6695	PACIFIC	MISD	FAXED	8/10/2016	0	0	8/18/2016	.
WSH	6696	KING	MISD	FAXED	8/10/2016	0	0	8/19/2016	.
WSH	6697	WHAT	MISD	FAXED	8/10/2016	0	0	8/19/2016	.
WSH	6698	KING	FELONY	FAXED	8/10/2016	0	1	8/19/2016	.
WSH	6699	KING	FELONY	FAXED	8/10/2016	0	0	8/22/2016	.
WSH	6700	PIERCE	MISD	FAXED	8/10/2016	0	0	8/22/2016	.
WSH	6701	PIERCE	MISD	FAXED	8/10/2016	0	0	8/23/2016	.
WSH	6702	THURS	FELONY	FAXED	8/10/2016	0	0	8/23/2016	.
WSH	6703	KING	MISD	FAXED	8/10/2016	0	0	8/25/2016	.
WSH	6704	WHAT	MISD	FAXED	8/10/2016	5	5	8/31/2016	.
WSH	6705	KING	FELONY	FAXED	8/10/2016	0	0	.	21
WSH	6706	KING	FELONY	BED O	8/11/2016	0	0	8/30/2016	.
WSH	6707	COWL	MISD	FAXED	8/11/2016	0	0	8/12/2016	.
WSH	6708	KING	MISD	FAXED	8/11/2016	0	0	8/16/2016	.
WSH	6709	KING	MISD	FAXED	8/11/2016	0	0	8/16/2016	.
WSH	6710	PIERCE	MISD	FAXED	8/11/2016	0	0	8/17/2016	.
WSH	6711	PIERCE	MISD	FAXED	8/11/2016	0	0	8/18/2016	.
WSH	6712	GRAYS	MISD	FAXED	8/11/2016	1	1	8/19/2016	.
WSH	6713	KING	MISD	FAXED	8/11/2016	0	0	8/24/2016	.
WSH	6714	KING	FELONY	FAXED	8/11/2016	0	0	8/25/2016	.
WSH	6715	SNOHO	FELONY	FAXED	8/11/2016	0	0	8/26/2016	.
WSH	6716	WHAT	FELONY	FAXED	8/11/2016	0	0	8/31/2016	.
WSH	6717	SNOHO	FELONY	FAXED	8/11/2016	0	1	.	20
WSH	6718	CLARK	FELONY	BED O	8/12/2016	0	0	8/29/2016	.
WSH	6719	CLARK	MISD	FAXED	8/12/2016	0	0	8/17/2016	.
WSH	6720	KING	MISD	FAXED	8/12/2016	0	0	8/18/2016	.
WSH	6721	KING	MISD	FAXED	8/12/2016	0	0	8/19/2016	.
WSH	6722	CLARK	MISD	FAXED	8/12/2016	0	0	8/23/2016	.
WSH	6723	KING	MISD	FAXED	8/12/2016	0	0	8/24/2016	.
WSH	6724	KING	MISD	FAXED	8/12/2016	0	0	8/24/2016	.

WSH	6725	KING	MISD	FAXED	8/12/2016	3	3	8/24/2016	.
WSH	6726	KING	FELONY	FAXED	8/12/2016	0	0	.	19
WSH	6727	KING	MISD	FAXED	8/12/2016	0	0	.	19
WSH	6728	KING	MISD	W/D	8/12/2016	0	0	.	19
WSH	6729	PIERCE	FELONY	BED O	8/15/2016	0	0	8/15/2016	.
WSH	6730	KITSAP	FELONY	BED O	8/15/2016	2	2	.	16
WSH	6731	SNOHO	MISD	BED O	8/15/2016	0	0	8/25/2016	.
WSH	6732	PIERCE	FELONY	BED O	8/15/2016	0	0	8/15/2016	.
WSH	6733	PIERCE	MISD	FAX	8/15/2016	0	0	8/19/2016	.
WSH	6734	KING	MISD	FAXED	8/15/2016	4	4	8/22/2016	.
WSH	6735	GRAYS	FELONY	FAXED	8/15/2016	0	.	8/22/2016	.
WSH	6736	THURS	FELONY	FAXED	8/15/2016	0	0	8/23/2016	.
WSH	6737	PIERCE	MISD	FAXED	8/15/2016	0	0	8/24/2016	.
WSH	6738	KING	MISD	FAXED	8/15/2016	0	0	8/25/2016	.
WSH	6739	KITSAP	MISD	FAXED	8/15/2016	0	0	8/25/2016	.
WSH	6740	KING	MISD	FAXED	8/15/2016	0	0	8/25/2016	.
WSH	6741	KING	MISD	FAXED	8/15/2016	4	4	8/25/2016	.
WSH	6742	COWL	MISD	W/D	8/15/2016	9	9	8/25/2016	.
WSH	6743	GRAYS	FELONY	FAXED	8/15/2016	0	0	8/26/2016	.
WSH	6744	KITSAP	MISD	FAXED	8/15/2016	0	0	8/30/2016	.
WSH	6745	PIERCE	MISD	FAXED	8/15/2016	0	0	8/31/2016	.
WSH	6746	KING	FELONY	FAXED	8/15/2016	0	0	.	16
WSH	6747	KING	MISD	FAXED	8/16/2016	0	0	8/19/2016	.
WSH	6748	SNOHO	MISD	FAXED	8/16/2016	1	1	8/22/2016	.
WSH	6749	KING	MISD	FAXED	8/16/2016	1	1	8/23/2016	.
WSH	6750	CLARK	FELONY	FAXED	8/16/2016	0	0	8/24/2016	.
WSH	6751	THURS	FELONY	FAXED	8/16/2016	0	0	8/24/2016	.
WSH	6752	KING	FELONY	FAXED	8/16/2016	0	0	8/25/2016	.
WSH	6753	CLARK	MISD	FAXED	8/16/2016	0	0	8/25/2016	.
WSH	6754	KING	MISD	FAXED	8/16/2016	0	1	8/26/2016	.
WSH	6755	PIERCE	MISD	FAXED	8/16/2016	0	0	8/29/2016	.

WSH	6756	THURS	MISD	FAXED	8/16/2016	0	0	8/29/2016	.
WSH	6757	KING	MISD	FAXED	8/16/2016	0	0	8/30/2016	.
WSH	6758	KING	MISD	FAXED	8/16/2016	0	1	8/30/2016	.
WSH	6759	KING	MISD	FAXED	8/16/2016	1	1	.	15
WSH	6760	KING	FELONY	BED O	8/17/2016	0	0	8/30/2016	.
WSH	6761	KING	MISD	BED O	8/17/2016	1	1	8/31/2016	.
WSH	6762	CLARK	MISD	FAXED	8/17/2016	1	1	8/24/2016	.
WSH	6763	SNOHO	MISD	W/D	8/17/2016	0	0	8/24/2016	.
WSH	6764	KING	MISD	FAXED	8/17/2016	0	0	8/24/2016	.
WSH	6765	KING	MISD	FAXED	8/17/2016	0	1	8/26/2016	.
WSH	6766	KITSAP	FELONY	FAXED	8/17/2016	0	0	8/28/2016	.
WSH	6767	SNOHO	MISD	FAXED	8/17/2016	0	0	8/29/2016	.
WSH	6768	LEWIS	MISD	FAXED	8/17/2016	2	2	8/31/2016	.
WSH	6769	GRAYS	MISD	FAXED	8/17/2016	0	0	8/31/2016	.
WSH	6770	SAN J	MISD	W/D	8/17/2016	0	0	8/31/2016	.
WSH	6771	KING	MISD	FAXED	8/17/2016	0	0	.	14
WSH	6772	KING	FELONY	FAXED	8/17/2016	0	1	.	14
WSH	6773	WHAT	FELONY	BED O	8/18/2016	4	4	.	13
WSH	6774	PIERCE	FELONY	BED O	8/18/2016	0	0	.	13
WSH	6775	CLARK	FELONY	FAXED	8/18/2016	1	4	8/24/2016	.
WSH	6776	SNOHO	MISD	FAXED	8/18/2016	0	0	8/25/2016	.
WSH	6777	CLARK	MISD	FAXED	8/18/2016	0	0	8/25/2016	.
WSH	6778	KITSAP	FELONY	FAXED	8/18/2016	0	0	8/28/2016	.
WSH	6779	KING	FELONY	FAXED	8/18/2016	0	0	8/29/2016	.
WSH	6780	PIERCE	FELONY	FAXED	8/18/2016	4	4	8/30/2016	.
WSH	6781	WHAT	FELONY	FAXED	8/18/2016	0	4	8/31/2016	.
WSH	6782	KING	MISD	FAXED	8/18/2016	1	1	8/31/2016	.
WSH	6783	KING	MISD	FAXED	8/18/2016	0	1	.	13
WSH	6784	KING	FELONY	INCOM.	8/18/2016	0	0	.	13
WSH	6785	KING	MISD	FAXED	8/18/2016	0	1	.	13
WSH	6786	SKAGIT	FELONY	FAXED	8/18/2016	0	0	.	13

WSH	6787	KING	FELONY	FAXED	8/19/2016	0	0	8/29/2016	.
WSH	6788	CLARK	FELONY	FAXED	8/19/2016	0	0	8/30/2016	.
WSH	6789	PIERCE	MISD	FAXED	8/19/2016	0	0	8/31/2016	.
WSH	6790	PIERCE	MISD	CLOSED	8/19/2016	0	0	8/31/2016	.
WSH	6791	PIERCE	MISD	FAXED	8/19/2016	0	0	.	12
WSH	6792	KITSAP	FELONY	BED O	8/22/2016	1	1	.	9
WSH	6793	PIERCE	FELONY	BED O	8/22/2016	1	1	.	9
WSH	6794	KING	MISD	FAXED	8/22/2016	0	3	8/29/2016	.
WSH	6795	THURS	FELONY	FAXED	8/22/2016	0	0	8/30/2016	.
WSH	6796	KING	MISD	FAXED	8/22/2016	0	0	8/30/2016	.
WSH	6797	KING	MISD	FAXED	8/22/2016	0	0	8/31/2016	.
WSH	6798	PIERCE	MISD	FAXED	8/22/2016	0	0	8/31/2016	.
WSH	6799	KING	FELONY	FAXED	8/22/2016	0	0	.	9
WSH	6800	KING	MISD	INCOM.	8/22/2016	0	1	.	9
WSH	6801	KING	MISD	FAXED	8/22/2016	0	0	.	9
WSH	6802	KING	MISD	FAXED	8/22/2016	0	1	.	9
WSH	6803	PIERCE	MISD	FAXED	8/22/2016	0	0	.	9
WSH	6804	PIERCE	MISD	FAXED	8/22/2016	0	0	.	9
WSH	6805	LEWIS	MISD	FAXED	8/22/2016	1	1	.	9
WSH	6806	GRAYS	FELONY	FAXED	8/22/2016	0	2	.	9
WSH	6807	WHAT	FELONY	FAXED	8/22/2016	3	8	.	9
WSH	6808	KING	MISD	W/D	8/23/2016	0	0	8/29/2016	.
WSH	6809	KING	FELONY	FAXED	8/23/2016	1	1	.	8
WSH	6810	SNOHO	MISD	FAXED	8/23/2016	0	0	.	8
WSH	6811	PIERCE	MISD	FAXED	8/23/2016	0	0	.	8
WSH	6812	CLALLAM	MISD	FAXED	8/23/2016	0	1	.	8
WSH	6813	KING	FELONY	FAXED	8/23/2016	1	1	.	8
WSH	6814	THURS	FELONY	FAXED	8/24/2016	0	0	8/30/2016	.
WSH	6815	KING	MISD	FAXED	8/24/2016	0	1	8/31/2016	.
WSH	6816	THURS	FELONY	FAXED	8/24/2016	0	0	8/31/2016	.

WSH	6817	WHAT	MISD	FAXED	8/24/2016	0	0	.	7
WSH	6818	PIERCE	MISD	FAXED	8/24/2016	0	0	.	7
WSH	6819	SNOHO	MISD	W/D	8/24/2016	0	0	.	7
WSH	6820	MASON	MISD	FAXED	8/24/2016	1	1	.	7
WSH	6821	KING	MISD	FAXED	8/24/2016	0	0	.	7
WSH	6822	KING	FELONY	INCOM.	8/25/2016	1	1	.	6
WSH	6823	KING	FELONY	BED O	8/25/2016	1	1	.	6
WSH	6824	CLARK	MISD	FAXED	8/25/2016	1	1	8/31/2016	.
WSH	6825	CLARK	MISD	FAXED	8/25/2016	0	0	.	6
WSH	6826	SNOHO	MISD	FAXED	8/25/2016	0	0	.	6
WSH	6827	KING	MISD	FAXED	8/25/2016	0	1	.	6
WSH	6828	KITSAP	FELONY	FAXED	8/25/2016	0	0	.	6
WSH	6829	KING	FELONY	FAXED	8/25/2016	0	0	.	6
WSH	6830	KING	FELONY	FAXED	8/25/2016	0	0	.	6
WSH	6831	KING	MISD	FAXED	8/25/2016	0	1	.	6
WSH	6832	CLARK	MISD	FAXED	8/25/2016	0	0	.	6
WSH	6833	KING	FELONY	FAXED	8/26/2016	0	0	.	5
WSH	6834	CLARK	MISD	FAXED	8/26/2016	0	0	.	5
WSH	6835	KING	MISD	FAXED	8/26/2016	0	0	.	5
WSH	6836	KING	MISD	FAXED	8/26/2016	0	0	.	5
WSH	6837	SNOHO	MISD	W/D	8/26/2016	0	0	.	5
WSH	6839	PIERCE	MISD	FAXED	8/29/2016	0	0	.	2
WSH	6840	KING	MISD	FAXED	8/29/2016	0	0	.	2
WSH	6841	KING	MISD	FAXED	8/29/2016	0	0	.	2
WSH	6842	GRAYS	MISD	FAXED	8/29/2016	0	0	.	2
WSH	6843	KING	MISD	FAXED	8/29/2016	0	0	.	2
WSH	6844	GRAYS	MISD	FAXED	8/29/2016	0	0	.	2
WSH	6845	KING	FELONY	FAXED	8/29/2016	0	0	.	2
WSH	6846	KING	MISD	FAXED	8/30/2016	0	0	.	1
WSH	6847	THURS	MISD	FAXED	8/30/2016	1	1	.	1

WSH	6848	LEWIS	MISD	FAXED	8/30/2016	0	0	.	1
WSH	6849	JEFF	MISD	FAXED	8/30/2016	2	2	.	1
WSH	6850	KING	MISD	FAXED	8/30/2016	0	1	.	1
WSH	6851	KING	FELONY	FAXED	8/30/2016	0	0	.	1
WSH	6852	PIERCE	MISD	FAXED	8/30/2016	0	0	.	1
WSH	6853	KING	FELONY	BED O	8/31/2016	0	0	.	0
WSH	6854	WHAT	MISD	BED O	8/31/2016	1	1	.	0
WSH	6855	PIERCE	MISD	FAXED	8/31/2016	1	1	.	0
WSH	6856	KING	MISD	FAXED	8/31/2016	0	0	.	0
WSH	6857	KING	MISD	FAXED	8/31/2016	0	0	.	0
WSH	6858	CLALLAM	FELONY	FAXED	8/31/2016	1	1	.	0
WSH	6959	PIERCE	FELONY	BED O	8/15/2016	0	0	8/15/2016	.
WSH	7014	ISLAND	FELONY	FAXED	8/5/2016	3	3	8/30/2016	.
WSH	7015	PIERCE	MISD	FAXED	8/15/2016	0	0	8/19/2016	.
WSH	7016	GRAYS	FELONY	FAXED	8/15/2016	0	2	8/31/2016	.
WSH	7017	GRAYS	FELONY	FAXED	8/15/2016	0	.	.	16
WSH	7018	PIERCE	FELONY	INCOM.	8/17/2016	35	35	.	14
WSH	7019	PIERCE	FELONY	INCOM.	8/18/2016	4	4	.	13
WSH	7020	PIERCE	FELONY	FAXED	8/19/2016	13	.	.	12
WSH	7021	CLALLAM	FELONY	FAXED	8/19/2016	13	13	.	12
WSH	7022	KING	MISD	FAXED	8/22/2016	0	4	8/30/2016	.
WSH	7023	CLARK	MISD	FAXED	8/26/2016	0	0	.	5
WSH	7024	KING	FELONY	FAXED	8/29/2016	1	1	.	2
WSH	7025	SNOHO	FELONY	FAXED	8/30/2016	16	16	.	1
WSH	7026	KING	MISD	FAXED	8/30/2016	0	0	.	1
WSH	7027	KING	FELONY	FAXED	8/30/2016	0	0	.	1
WSH	7028	KITSAP	MISD	FAXED	8/30/2016	0	0	.	1
WSH	7029	KITSAP	FELONY	FAXED	8/30/2016	0	0	.	1
WSH	7030	KING	MISD	FAXED	8/30/2016	0	0	.	1
WSH	7031	THURS	FELONY	FAXED	8/30/2016	2	2	.	1

WSH	7032	ISLAND	FELONY	BED O	8/31/2016	2	2	.	0
WSH	7033	GRAYS	MISD	FAXED	8/31/2016	0	0	.	0
WSH	7034	KITSAP	MISD	FAXED	8/31/2016	0	0	.	0
WSH	7035	PACIFIC	FELONY	FAXED	8/31/2016	19	19	.	0

### **Appendix B: Class Member--Restoration Information for August 2016**

Hospital	Class Member	County	Offense	Completion Method or Incomplete	Order Signed Date	Number of days from signed order to:			
						Order Received	Discovery	Complete	Incomplete to End of Reporting Period
WSH	6922	KING	FELONY	BED O	8/3/2016	0	0	0	.
WSH	6926	KING	FELONY	BED O	8/4/2016	0	0	0	.
WSH	6937	SNOHOMISH	FELONY	BED O	8/9/2016	0	0	0	.
WSH	6951	KING	FELONY	BED O	8/10/2016	0	0	0	.
ESH	7009	ADAMS	FELONY	ADMIT	8/11/2016	0	0	0	.
WSH	6959	PIERCE	FELONY	BED O	8/15/2016	0	0	0	.
WSH	6963	PIERCE	FELONY	BED O	8/16/2016	0	0	0	.
WSH	6980	KING	FELONY	BED O	8/22/2016	0	0	0	.
WSH	6982	KING	FELONY	BED O	8/23/2016	0	0	0	.
WSH	6983	KING	FELONY	BED O	8/24/2016	0	0	0	.
WSH	6990	WHATCOM	FELONY	BED O	8/26/2016	0	0	0	.
WSH	6995	PIERCE	FELONY	BED O	8/29/2016	0	0	0	.
WSH	6996	KING	FELONY	BED O	8/29/2016	0	0	0	.
WSH	6998	PIERCE	FELONY	BED O	8/29/2016	0	0	0	.
WSH	6984	PIERCE	FELONY	BED O	8/24/2016	1	1	2	.
ESH	6561	SPOKANE	FELONY	ADMIT	7/29/2016	0	0	3	.
ESH	7013	SPOKANE	FELONY	ADMIT	8/26/2016	0	0	3	.
WSH	6915	KING	FELONY	BED O	8/1/2016	1	1	4	.

ESH	7012	DOUGLAS	FELONY	ADMIT	8/25/2016	0	0	5	.
WSH	6992	PIERCE	FELONY	BED O	8/26/2016	0	0	5	.
ESH	7008	SPOKANE	FELONY	ADMIT	8/9/2016	1	1	6	.
WSH	6942	PIERCE	FELONY	BED O	8/10/2016	2	2	6	.
ESH	7010	BENTON	FELONY	ADMIT	8/11/2016	1	1	6	.
WSH	6978	THURSTON	FELONY	BED O	8/19/2016	3	3	6	.
WSH	6616	PIERCE	MISD	BED O	7/29/2016	3	3	7	.
ESH	7007	SPOKANE	FELONY	ADMIT	8/8/2016	1	1	7	.
WSH	6952	KING	FELONY	BED O	8/11/2016	1	1	7	.
ESH	7011	SPOKANE	FELONY	ADMIT	8/12/2016	0	0	7	.
WSH	6540	KING	MISD	BED O	7/25/2016	0	0	8	.
WSH	6547	KITSAP	MISD	BED O	7/27/2016	0	0	8	.
WSH	6967	PIERCE	MISD	BED O	8/17/2016	0	0	8	.
WSH	6918	KITSAP	FELONY	BED O	8/2/2016	7	7	10	.
WSH	6934	KING	MISD	BED O	8/8/2016	2	2	10	.
WSH	6935	KING	FELONY	BED O	8/8/2016	0	0	10	.
WSH	6532	PIERCE	FELONY	BED O	7/20/2016	0	0	12	.
WSH	6956	PIERCE	FELONY	BED O	8/12/2016	0	0	12	.
WSH	6539	KING	FELONY	BED O	7/21/2016	1	1	13	.
WSH	6920	PIERCE	FELONY	BED O	8/3/2016	1	1	13	.
WSH	6944	GRAYS H	FELONY	BED O	8/10/2016	0	0	13	.
WSH	6529	KING	FELONY	BED O	7/20/2016	0	0	15	.
WSH	6936	KING	FELONY	BED O	8/8/2016	0	14	16	.
WSH	6521	LEWIS	FELONY	BED O	7/14/2016	1	1	18	.
WSH	6605	PIERCE	FELONY	BED O	7/22/2016	0	0	18	.
WSH	6927	KING	MISD	BED O	8/4/2016	1	1	18	.
WSH	6932	SNOHOMISH	MISD	CANCELLED	8/5/2016	0	0	21	.
WSH	6607	COWLITZ	FELONY	BED O	7/26/2016	0	0	24	.
WSH	6608	CLALLAM	FELONY	BED O	7/26/2016	3	3	24	.
WSH	6914	PIERCE	FELONY	BED O	8/1/2016	0	0	24	.



WSH	6930	MASON	MISD	BED O	8/5/2016	0	0	24	.
WSH	6508	LEWIS	FELONY	BED O	7/7/2016	1	1	25	.
WSH	6528	PIERCE	FELONY	BED O	7/14/2016	4	6	25	.
WSH	6917	PIERCE	FELONY	BED O	8/2/2016	2	2	27	.
WSH	6919	PIERCE	FELONY	BED O	8/2/2016	1	1	27	.
WSH	6522	KING	FELONY	BED O	7/18/2016	0	0	28	.
WSH	6523	KING	FELONY	BED O	7/18/2016	0	0	28	.
WSH	6550	CLARK	FELONY	BED O	7/28/2016	0	0	29	.
WSH	6611	PIERCE	FELONY	BED O	7/27/2016	1	2	29	.
WSH	6916	CLARK	FELONY	BED O	8/2/2016	0	0	29	.
WSH	6603	THURSTON	FELONY	BED O	7/19/2016	0	0	30	.
WSH	6601	SKAMANIA	FELONY	BED O	6/30/2016	0	0	41	.
WSH	6600	PIERCE	FELONY	BED O	6/23/2016	1	0	47	.
WSH	6599	PIERCE	FELONY	BED O	5/6/2016	84	84	91	.
WSH	6533	WHATCOM	FELONY	INCOMPLETE	7/21/2016	0	0	.	41
WSH	6923	KING	FELONY	INCOMPLETE	8/3/2016	0	0	.	28
WSH	6928	LEWIS	FELONY	INCOMPLETE	8/4/2016	1	1	.	27
WSH	6929	PIERCE	FELONY	INCOMPLETE	8/4/2016	1	1	.	27
WSH	6933	PIERCE	FELONY	INCOMPLETE	8/5/2016	0	0	.	26
WSH	6938	COWLITZ	FELONY	INCOMPLETE	8/9/2016	0	0	.	22
WSH	6940	COWLITZ	FELONY	INCOMPLETE	8/9/2016	0	0	.	22
WSH	6943	KITSAP	FELONY	INCOMPLETE	8/10/2016	1	1	.	21
WSH	6945	KING	MISD	BED O	8/10/2016	0	0	.	21
WSH	6953	PIERCE	FELONY	INCOMPLETE	8/11/2016	1	1	.	20
WSH	6954	PIERCE	FELONY	INCOMPLETE	8/12/2016	0	0	.	19
WSH	6955	PIERCE	FELONY	INCOMPLETE	8/12/2016	0	0	.	19
WSH	6958	PIERCE	FELONY	INCOMPLETE	8/12/2016	3	17	.	19
WSH	6960	THURSTON	FELONY	INCOMPLETE	8/15/2016	3	3	.	16
WSH	6962	THURSTON	FELONY	INCOMPLETE	8/15/2016	8	8	.	16
WSH	6964	THURSTON	MISD	BED O	8/16/2016	0	0	.	15

WSH	6965	PIERCE	FELONY	INCOMPLETE	8/16/2016	2	2	.	15
WSH	6969	SNOHOMISH	FELONY	INCOMPLETE	8/18/2016	0	0	.	13
WSH	6972	WHATCOM	MISD	INCOMPLETE	8/18/2016	0	0	.	13
WSH	6973	PIERCE	MISD	BED O	8/18/2016	4	4	.	13
WSH	6974	PIERCE	FELONY	INCOMPLETE	8/18/2016	0	0	.	13
WSH	6976	SNOHOMISH	FELONY	INCOMPLETE	8/18/2016	0	0	.	13
WSH	6977	THURSTON	MISD	INCOMPLETE	8/18/2016	1	1	.	13
WSH	6979	KING	FELONY	INCOMPLETE	8/22/2016	1	1	.	9
WSH	6981	PIERCE	FELONY	INCOMPLETE	8/22/2016	1	1	.	9
WSH	6985	CLARK	FELONY	INCOMPLETE	8/24/2016	1	1	.	7
WSH	6986	KING	FELONY	INCOMPLETE	8/24/2016	1	1	.	7
WSH	6988	PIERCE	MISD	INCOMPLETE	8/24/2016	0	0	.	7
WSH	6989	PIERCE	FELONY	INCOMPLETE	8/25/2016	1	1	.	6
WSH	6991	PIERCE	FELONY	INCOMPLETE	8/26/2016	3	3	.	5
WSH	6993	SNOHOMISH	FELONY	BED O	8/26/2016	3	3	.	5
WSH	6994	PIERCE	FELONY	INCOMPLETE	8/26/2016	3	3	.	5
WSH	6997	KITSAP	MISD	INCOMPLETE	8/29/2016	0	0	.	2
WSH	6999	KITSAP	FELONY	INCOMPLETE	8/30/2016	1	1	.	1
WSH	7000	PIERCE	MIS	INCOMPLETE	8/30/2016	1	1	.	1
WSH	7001	SNOHOMISH	FELONY	INCOMPLETE	8/31/2016	0	0	.	0
WSH	7002	KING	FELONY	INCOMPLETE	8/31/2016	0	0	.	0
WSH	7003	KING	FELONY	INCOMPLETE	8/31/2016	1	1	.	0
WSH	7004	PIERCE	FELONY	INCOMPLETE	8/31/2016	0	0	.	0
WSH	7005	CLARK	FELONY	INCOMPLETE	8/31/2016	0	0	.	0
WSH	7006	KING	FELONY	INCOMPLETE	8/31/2016	0	0	.	0

**Appendix C: Class Member--Restoration Information for Maple Lane August 2016**

Hospital	Class Member	County	Offense	Completion Method or Incomplete	Order Signed Date	Number of days from signed order to:			
						Received	Discovery	Complete	Incomplete to end of Reporting period
WSH	6957	SNOHO	FELONY	BED O	8/12/2016	0	0	0	.
WSH	6921	SNOHO	FELONY	BED O	8/3/2016	0	0	5	.
WSH	6546	SNOHO	FELONY	BED O	7/27/2016	0	0	6	.
WSH	6541	KING	MISD	BED O	7/25/2016	0	0	7	.
WSH	6609	GRAYS	FELONY	BED O	7/26/2016	3	3	7	.
WSH	6948	KITSAP	MISD	BED O	8/10/2016	0	0	7	.
WSH	6987	KING	FELONY	BED O	8/24/2016	1	1	7	.
WSH	6612	KING	MISD	BED O	7/27/2016	2	2	8	.
WSH	6946	KING	FELONY	BED O	8/10/2016	0	0	8	.
WSH	6961	THURS	FELONY	BED O	8/15/2016	0	0	8	.
WSH	6949	JEFF	MISD	BED O	8/10/2016	0	0	9	.
WSH	6950	KING	MISD	BED O	8/10/2016	0	0	9	.
WSH	6610	KING	MISD	BED O	7/26/2016	3	3	10	.
WSH	6615	KITSAP	MISD	BED O	7/29/2016	0	0	10	.
WSH	6941	CLARK	FELONY	BED O	8/9/2016	0	0	10	.
WSH	6924	KING	MISD	BED O	8/4/2016	0	0	11	.
WSH	6925	KING	MISD	BED O	8/4/2016	1	1	11	.
WSH	6614	KING	MISD	BED O	7/29/2016	0	0	13	.
WSH	6975	COWLITZ	FELONY	BED O	8/18/2016	1	1	13	.
WSH	6613	PIERCE	MISD	BED O	7/28/2016	5	5	14	.
WSH	6517	KING	MISD	BED O	7/14/2016	0	0	21	.

**Appendix D: Class Member--Restoration Information for Yakima August 2016**

Hospital	Class Member	County	Offense	Completion Method or Incomplete	Order Signed Date	Order Received Date	Number of days from signed order to:			
							Received	Discovery	Complete	Incomplete to End of Reporting Period
WSH	6970	KING	FELONY	BED O	8/18/2016	8/18/2016	0	8/18/2016	0	.
WSH	6971	THURSTON	FELONY	BED O	8/18/2016	8/22/2016	4	8/22/2016	4	.
WSH	6947	COWLITZ	FELONY	BED O	8/10/2016	8/10/2016	0	8/10/2016	7	.
WSH	6968	KING	FELONY	BED O	8/17/2016	8/17/2016	0	8/17/2016	8	.
WSH	6939	KITSAP	FELONY	BED O	8/9/2016	8/9/2016	0	8/9/2016	10	.
WSH	6931	CLARK	FELONY	BED O	8/5/2016	8/5/2016	0	8/5/2016	11	.
WSH	6549	WHATCOM	FELONY	BED O	7/28/2016	7/28/2016	0	7/28/2016	12	.
WSH	6966	CLARK	FELONY	BED O	8/17/2016	8/18/2016	1	8/18/2016	12	.
WSH	6604	KING	FELONY	BED O	7/21/2016	7/21/2016	0	7/21/2016	22	.
WSH	6606	KITSAP	FELONY	BED O	7/25/2016	7/25/2016	0	7/25/2016	23	.

**Appendix E: Class Member--Evaluation Information for September 2016**

Hospital	Class Member	County	Offense	Completion Method or Incomplete	Order Signed Date	Number of Days from signed order:			
						Order Received	Discovery	Completion	Incomplete to end of Reporting Period
WSH	6648	PIERCE	FELONY	BED O.	8/3/2016	0	0	43	.
WSH	6656	KING	FELONY	CRIC	8/3/2016	0	0	35	.
WSH	6657	PIERCE	FELONY	FAXED	8/3/2016	1	1	29	.
WSH	6659	KING	MISD	CANCELLED	8/4/2016	20	20	34	.
WSH	6666	KING	FELONY	TIC	8/4/2016	0	0	41	.
WSH	6682	KING	FELONY	FAXED	8/8/2016	0	0	24	.
WSH	6683	COWLITZ	FELONY	BED O	8/9/2016	7	7	31	.
WSH	6705	KING	FELONY	FAXED	8/10/2016	0	0	29	.
WSH	6717	SNOHOMISH	FELONY	FAXED	8/11/2016	0	1	21	.
WSH	6726	KING	FELONY	FAXED	8/12/2016	0	0	27	.
WSH	6727	KING	MISD	FAXED	8/12/2016	0	0	38	.
WSH	6728	KING	MISD	WITHDRAWN	8/12/2016	0	0	26	.
WSH	6730	KITSAP	FELONY	BED O	8/15/2016	2	2	17	.
WSH	6746	KING	FELONY	FAXED	8/15/2016	0	0	22	.
WSH	6759	KING	MISD	FAXED	8/16/2016	1	1	22	.
WSH	6771	KING	MISD	FAXED	8/17/2016	0	0	20	.
WSH	6772	KING	FELONY	FAXED	8/17/2016	0	1	29	.
WSH	6773	WHATCOM	FELONY	BED O	8/18/2016	4	4	14	.
WSH	6774	PIERCE	FELONY	BED O	8/18/2016	0	0	14	.
WSH	6783	KING	MISD	FAXED	8/18/2016	0	1	22	.
WSH	6784	KING	FELONY	INCOMPLETE	8/18/2016	0	0	.	43
WSH	6785	KING	MISD	FAXED	8/18/2016	0	1	15	.
WSH	6786	SKAGIT	FELONY	FAXED	8/18/2016	0	0	14	.
WSH	6791	PIERCE	MISD	FAXED	8/19/2016	0	0	13	.
WSH	6792	KITSAP	FELONY	BED O	8/22/2016	1	1	17	.

WSH	6793	PIERCE	FELONY	BED O	8/22/2016	1	1	15	.
WSH	6799	KING	FELONY	FAXED	8/22/2016	0	0	11	.
WSH	6800	KING	MISD	FAXED	8/22/2016	0	1	37	.
WSH	6801	KING	MISD	FAXED	8/22/2016	0	0	11	.
WSH	6802	KING	MISD	FAXED	8/22/2016	0	1	18	.
WSH	6803	PIERCE	MISD	FAXED	8/22/2016	0	0	10	.
WSH	6804	PIERCE	MISD	FAXED	8/22/2016	0	0	10	.
WSH	6805	LEWIS	MISD	FAXED	8/22/2016	1	1	10	.
WSH	6806	GRAYS H	FELONY	FAXED	8/22/2016	0	2	26	.
WSH	6807	WHATCOM	FELONY	FAXED	8/22/2016	3	8	25	.
WSH	6809	KING	FELONY	FAXED	8/23/2016	1	1	21	.
WSH	6810	SNOHOMISH	MISD	FAXED	8/23/2016	0	0	9	.
WSH	6811	PIERCE	MISD	FAXED	8/23/2016	0	0	10	.
WSH	6812	CLALLAM	MISD	FAXED	8/23/2016	0	1	10	.
WSH	6813	KING	FELONY	FAXED	8/23/2016	1	1	22	.
WSH	6817	WHATCOM	MISD	FAXED	8/24/2016	0	0	8	.
WSH	6818	PIERCE	MISD	FAXED	8/24/2016	0	0	13	.
WSH	6819	SNOHOMISH	MISD	W/D	8/24/2016	0	0	9	.
WSH	6820	MASON	MISD	FAXED	8/24/2016	1	1	8	.
WSH	6821	KING	MISD	FAXED	8/24/2016	0	0	9	.
WSH	6822	KING	FELONY	INCOMPLETE	8/25/2016	1	1	.	36
WSH	6823	KING	FELONY	BED O	8/25/2016	1	1	13	.
WSH	6825	CLARK	MISD	FAXED	8/25/2016	0	0	7	.
WSH	6826	SNOHOMISH	MISD	FAXED	8/25/2016	0	0	8	.
WSH	6827	KING	MISD	FAXED	8/25/2016	0	1	7	.
WSH	6828	KITSAP	FELONY	FAXED	8/25/2016	0	0	13	.
WSH	6829	KING	FELONY	FAXED	8/25/2016	0	0	18	.
WSH	6830	KING	FELONY	FAXED	8/25/2016	0	0	8	.
WSH	6831	KING	MISD	FAXED	8/25/2016	0	1	15	.
WSH	6832	CLARK	MISD	FAXED	8/25/2016	0	0	15	.
WSH	6833	KING	FELONY	FAXED	8/26/2016	0	0	18	.
WSH	6834	CLARK	MISD	FAXED	8/26/2016	0	0	7	.

WSH	6835	KING	MISD	FAXED	8/26/2016	0	0	12	.
WSH	6836	KING	MISD	FAXED	8/26/2016	0	0	12	.
WSH	6837	SNOHOMISH	MISD	W/D	8/26/2016	0	0	14	.
WSH	6839	PIERCE	MISD	FAXED	8/29/2016	0	0	11	.
WSH	6840	KING	MISD	FAXED	8/29/2016	0	0	4	.
WSH	6841	KING	MISD	FAXED	8/29/2016	0	0	4	.
WSH	6842	GRAYS H	MISD	FAXED	8/29/2016	0	0	4	.
WSH	6843	KING	MISD	FAXED	8/29/2016	0	0	10	.
WSH	6844	GRAYS H	MISD	FAXED	8/29/2016	0	0	9	.
WSH	6845	KING	FELONY	FAXED	8/29/2016	0	0	11	.
WSH	6846	KING	MISD	FAXED	8/30/2016	0	0	9	.
WSH	6847	THURSTON	MISD	FAXED	8/30/2016	1	1	13	.
WSH	6848	LEWIS	MISD	FAXED	8/30/2016	0	0	13	.
WSH	6849	JEFFERSON	MISD	FAXED	8/30/2016	2	2	14	.
WSH	6850	KING	MISD	FAXED	8/30/2016	0	1	8	.
WSH	6851	KING	FELONY	FAXED	8/30/2016	0	0	8	.
WSH	6852	PIERCE	MISD	FAXED	8/30/2016	0	0	10	.
WSH	6853	KING	FELONY	BED O	8/31/2016	0	0	13	.
WSH	6854	WHATCOM	MISD	BED O	8/31/2016	1	1	8	.
WSH	6855	PIERCE	MISD	FAXED	8/31/2016	1	1	13	.
WSH	6856	KING	MISD	FAXED	8/31/2016	0	0	19	.
WSH	6857	KING	MISD	FAXED	8/31/2016	0	0	9	.
WSH	6858	CLALLAM	FELONY	FAXED	8/31/2016	1	1	15	.
WSH	7017	GRAYS H	FELONY	FAXED	8/15/2016	0	.	17	.
WSH	7018	PIERCE	FELONY	INCOMPLETE	8/17/2016	35	35	.	44
WSH	7019	PIERCE	FELONY	INCOMPLETE	8/18/2016	4	4	.	43
WSH	7020	PIERCE	FELONY	FAXED	8/19/2016	13	.	26	.
WSH	7021	CLALLAM	FELONY	FAXED	8/19/2016	13	13	20	.
WSH	7023	CLARK	MISD	FAXED	8/26/2016	0	0	11	.
WSH	7024	KING	FELONY	FAXED	8/29/2016	1	1	16	.
WSH	7025	SNOHOMISH	FELONY	FAXED	8/30/2016	16	16	22	.
WSH	7026	KING	MISD	FAXED	8/30/2016	0	0	14	.

WSH	7027	KING	FELONY	FAXED	8/30/2016	0	0	20	.
WSH	7028	KITSAP	MISD	FAXED	8/30/2016	0	0	9	.
WSH	7029	KITSAP	FELONY	FAXED	8/30/2016	0	0	9	.
WSH	7030	KING	MISD	FAXED	8/30/2016	0	0	10	.
WSH	7031	THURSTON	FELONY	FAXED	8/30/2016	2	2	12	.
WSH	7032	ISLAND	FELONY	BED	8/31/2016	2	2	2	.
WSH	7033	GRAYS H	MISD	FAXED	8/31/2016	0	0	6	.
WSH	7034	KITSAP	MISD	FAXED	8/31/2016	0	0	9	.
WSH	7035	PACIFIC	FELONY	FAXED	8/31/2016	19	19	23	.
WSH	7084	SKAGIT	FELONY	FAXED	9/1/2016	0	0	14	.
WSH	7085	KING	MISD	FAXED	9/1/2016	0	0	14	.
WSH	7086	KING	FELONY	FAXED	9/1/2016	0	5	19	.
WSH	7087	PIERCE	MISD	FAXED	9/1/2016	0	0	13	.
WSH	7088	KING	MISD	FAXED	9/1/2016	0	0	11	.
WSH	7089	WHATCOM	FELONY	FAXED	9/1/2016	0	0	15	.
WSH	7090	SKAGIT	FELONY	FAXED	9/1/2016	0	0	14	.
WSH	7091	KING	MISD	FAXED	9/1/2016	0	0	11	.
WSH	7092	WHATCOM	FELONY	FAXED	9/1/2016	0	1	15	.
WSH	7093	KING	FELONY	TIC	9/1/2016	0	5	13	.
WSH	7094	KING	MISD	TIC	9/1/2016	0	0	12	.
WSH	7095	MASON	MISD	FAXED	9/1/2016	0	0	14	.
WSH	7096	KITSAP	MISD	FAXED	9/1/2016	0	0	21	.
WSH	7097	LEWIS	FELONY	FAXED	9/2/2016	0	0	18	.
WSH	7098	KITSAP	FELONY	FAXED	9/2/2016	0	0	7	.
WSH	7099	SNOHOMISH	MISD	FAXED	9/2/2016	10	10	18	.
WSH	7100	THURSTON	FELONY	FAXED	9/2/2016	0	0	9	.
WSH	7101	KING	MISD	FAXED	9/2/2016	0	0	11	.
WSH	7102	KING	MISD	FAXED	9/2/2016	0	0	7	.
WSH	7103	KING	MISD	FAXED	9/2/2016	0	0	13	.
WSH	7104	LEWIS	FELONY	FAXED	9/2/2016	0	0	12	.
WSH	7105	KING	FELONY	TIC	9/2/2016	0	4	24	.
WSH	7106	KING	MISD	FAXED	9/2/2016	0	0	21	.



WSH	7107	KING	MISD	FAXED	9/2/2016	4	.	11	.
WSH	7108	PIERCE	MISD	WITHDRAWN	9/2/2016	0	4	7	.
WSH	7109	KING	MISD	WITHDRAWN	9/3/2016	0	3	11	.
WSH	7110	COWLITZ	FELONY	FAXED	9/6/2016	0	0	13	.
WSH	7111	KING	MISD	FAXED	9/6/2016	0	0	8	.
WSH	7112	KING	MISD	FAXED	9/6/2016	0	0	7	.
WSH	7113	KITSAP	MISD	FAXED	9/6/2016	1	1	10	.
WSH	7114	KING	MISD	FAXED	9/6/2016	0	0	17	.
WSH	7115	KING	FELONY	FAXED	9/6/2016	0	1	21	.
WSH	7116	KING	MISD	FAXED	9/6/2016	0	0	8	.
WSH	7117	KING	MISD	FAXED	9/6/2016	0	0	10	.
WSH	7118	KING	FELONY	FAXED	9/6/2016	0	0	9	.
WSH	7119	CLARK	MISD	WITHDRAWN	9/6/2016	0	1	7	.
WSH	7120	KING	MISD	FAXED	9/6/2016	1	1	10	.
WSH	7121	KING	MISD	FAXED	9/6/2016	0	.	11	.
WSH	7122	KING	FELONY	FAXED	9/7/2016	0	0	12	.
WSH	7123	WHATCOM	MISD	FAXED	9/7/2016	0	0	13	.
WSH	7124	SNOHOMISH	FELONY	FAXED	9/7/2016	0	0	22	.
WSH	7125	KING	MISD	FAXED	9/7/2016	0	.	13	.
WSH	7126	KING	MISD	FAXED	9/7/2016	0	.	15	.
WSH	7127	CLARK	MISD	FAXED	9/7/2016	0	0	21	.
WSH	7128	SNOHOMISH	MISD	FAXED	9/7/2016	0	0	13	.
WSH	7129	KITSAP	FELONY	FAXED	9/7/2016	0	0	9	.
WSH	7130	KING	MISD	FAXED	9/7/2016	0	0	8	.
WSH	7131	KING	FELONY	FAXED	9/8/2016	0	1	19	.
WSH	7132	KING	FELONY	FAXED	9/8/2016	0	0	19	.
WSH	7133	CLARK	FELONY	FAXED	9/8/2016	0	1	12	.
WSH	7134	KING	MISD	FAXED	9/8/2016	0	0	5	.
WSH	7135	THURSTON	MISD	FAXED	9/8/2016	0	0	15	.
WSH	7136	KING	MISD	FAXED	9/8/2016	1	1	14	.
WSH	7137	KING	MISD	FAXED	9/8/2016	1	1	11	.
WSH	7138	GRAYS H	MISD	FAXED	9/8/2016	1	1	7	.

WSH	7139	CLARK	FELONY	FAXED	9/8/2016	0	1	6	.
WSH	7140	KING	MISD	FAXED	9/8/2016	0	1	7	.
WSH	7141	PIERCE	MISD	FAXED	9/8/2016	0	1	4	.
WSH	7142	KING	FELONY	FAXED	9/8/2016	0	1	13	.
WSH	7143	KING	MISD	FAXED	9/9/2016	0	0	18	.
WSH	7144	KITSAP	FELONY	FAXED	9/9/2016	0	0	14	.
WSH	7145	KING	MISD	FAXED	9/9/2016	0	.	11	.
WSH	7146	CLARK	MISD	FAXED	9/9/2016	0	0	0	.
WSH	7147	THURSTON	MISD	FAXED	9/9/2016	0	3	5	.
WSH	7148	KING	MISD	FAXED	9/9/2016	0	0	10	.
WSH	7149	GRAYS H	MISD	FAXED	9/9/2016	4	4	12	.
WSH	7150	WHATCOM	FELONY	INCOMPLETE	9/9/2016	0	0	.	21
WSH	7151	KING	MISD	FAXED	9/9/2016	0	0	11	.
WSH	7152	SNOHOMISH	FELONY	FAXED	9/9/2016	0	0	18	.
WSH	7153	KING	MISD	FAXED	9/12/2016	0	0	7	.
WSH	7154	SNOHOMISH	FELONY	WITHDRAWN	9/12/2016	0	0	16	.
WSH	7155	LEWIS	FELONY	FAXED	9/12/2016	0	0	9	.
WSH	7156	KING	MISD	FAXED	9/12/2016	0	0	10	.
WSH	7157	PIERCE	MISD	FAXED	9/12/2016	0	0	2	.
WSH	7158	PIERCE	FELONY	FAXED	9/12/2016	2	2	14	.
WSH	7159	KING	MISD	FAXED	9/12/2016	0	0	16	.
WSH	7160	KING	MISD	WITHDRAWN	9/12/2016	0	0	7	.
WSH	7161	CLARK	FELONY	FAXED	9/12/2016	0	0	9	.
WSH	7162	KING	MISD	FAXED	9/12/2016	0	0	3	.
WSH	7163	CLARK	MISD	FAXED	9/12/2016	0	0	11	.
WSH	7164	KING	MISD	FAXED	9/12/2016	0	1	16	.
WSH	7165	KING	MISD	INCOMPLETE	9/13/2016	0	0	.	17
WSH	7166	KING	MISD	FAXED	9/13/2016	0	1	15	.
WSH	7167	KING	FELONY	FAXED	9/13/2016	0	1	17	.
WSH	7168	PIERCE	MISD	WITHDRAWN	9/13/2016	0	0	7	.
WSH	7169	THURSTON	MISD	FAXED	9/13/2016	0	0	13	.
WSH	7170	KING	FELONY	INCOMPLETE	9/13/2016	1	1	.	17

WSH	7171	SNOHOMISH	MISD	FAXED	9/13/2016	1	1	4	.
WSH	7172	CLARK	FELONY	FAXED	9/14/2016	0	0	9	.
WSH	7173	PIERCE	MISD	FAXED	9/14/2016	0	2	9	.
WSH	7174	KING	MISD	WITHDRAWN	9/14/2016	0	0	7	.
WSH	7175	KING	FELONY	INCOMPLETE	9/14/2016	0	0	.	16
WSH	7176	KING	FELONY	INCOMPLETE	9/15/2016	0	0	.	15
WSH	7177	PIERCE	FELONY	INCOMPLETE	9/15/2016	4	5	.	15
WSH	7178	KING	FELONY	INCOMPLETE	9/15/2016	0	1	.	15
WSH	7179	KING	MISD	FAXED	9/15/2016	0	0	14	.
WSH	7180	KING	FELONY	FAXED	9/15/2016	0	0	6	.
WSH	7181	KING	FELONY	INCOMPLETE	9/15/2016	0	1	.	15
WSH	7182	PIERCE	FELONY	FAXED	9/15/2016	0	0	14	.
WSH	7183	KING	MISD	INCOMPLETE	9/15/2016	0	0	.	15
WSH	7184	KING	FELONY	FAXED	9/15/2016	0	0	14	.
WSH	7185	CLARK	FELONY	FAXED	9/15/2016	1	1	12	.
WSH	7186	KING	MISD	FAXED	9/16/2016	0	0	12	.
WSH	7187	KING	FELONY	INCOMPLETE	9/16/2016	3	3	.	14
WSH	7188	SNOHOMISH	MISD	FAXED	9/16/2016	0	0	10	.
WSH	7189	SNOHOMISH	MISD	WITHDRAWN	9/16/2016	0	0	13	.
WSH	7190	KING	MISD	FAXED	9/16/2016	0	0	6	.
WSH	7191	KING	MISD	FAXED	9/16/2016	0	0	7	.
WSH	7192	WHATCOM	MISD	INCOMPLETE	9/16/2016	3	3	.	14
WSH	7193	CLARK	MISD	FAXED	9/16/2016	0	0	9	.
WSH	7194	WHATCOM	FELONY	INCOMPLETE	9/16/2016	0	0	.	14
WSH	7195	PIERCE	FELONY	WITHDRAWN	9/16/2016	0	0	4	.
WSH	7196	KING	MISD	FAXED	9/17/2016	3	3	13	.
WSH	7197	KING	MISD	INCOMPLETE	9/19/2016	0	0	.	11
WSH	7198	SNOHOMISH	FELONY	INCOMPLETE	9/19/2016	1	1	.	11
WSH	7199	THURSTON	FELONY	FAXED	9/19/2016	0	0	8	.
WSH	7200	GRAYS H	FELONY	FAXED	9/19/2016	0	0	2	.
WSH	7201	CLARK	FELONY	INCOMPLETE	9/19/2016	0	0	.	11
WSH	7202	CLARK	MISD	INCOMPLETE	9/19/2016	0	0	.	11

WSH	7203	KING	MISD	FAXED	9/19/2016	0	0	10	.
WSH	7204	SNOHOMISH	MISD	FAXED	9/19/2016	0	0	11	.
WSH	7205	KING	MISD	INCOMPLETE	9/19/2016	0	0	.	11
WSH	7206	SNOHOMISH	FELONY	INCOMPLETE	9/19/2016	0	0	.	11
WSH	7207	KING	FELONY	INCOMPLETE	9/19/2016	1	1	.	11
WSH	7208	CLARK	MISD	INCOMPLETE	9/19/2016	0	4	.	11
WSH	7209	KING	FELONY	INCOMPLETE	9/19/2016	0	0	.	11
WSH	7210	KING	MISD	INCOMPLETE	9/20/2016	3	3	.	10
WSH	7211	KING	MISD	FAXED	9/20/2016	0	0	9	.
WSH	7212	KING	MISD	INCOMPLETE	9/20/2016	1	1	.	10
WSH	7213	KING	MISD	INCOMPLETE	9/20/2016	0	.	.	10
WSH	7214	KING	MISD	INCOMPLETE	9/20/2016	3	3	.	10
WSH	7215	KING	FELONY	INCOMPLETE	9/20/2016	0	0	.	10
WSH	7216	PIERCE	MISD	FAXED	9/20/2016	0	0	7	.
WSH	7217	COWLITZ	FELONY	INCOMPLETE	9/20/2016	0	0	.	10
WSH	7218	SNOHOMISH	MISD	FAXED	9/20/2016	0	0	9	.
WSH	7219	KING	MISD	INCOMPLETE	9/20/2016	0	0	.	10
WSH	7220	SNOHOMISH	FELONY	INCOMPLETE	9/20/2016	0	3	.	10
WSH	7221	THURSTON	FELONY	FAXED	9/20/2016	0	0	9	.
WSH	7222	KING	MISD	INCOMPLETE	9/21/2016	0	0	.	9
WSH	7223	PIERCE	MISD	FAXED	9/21/2016	1	1	7	.
WSH	7224	KING	MISD	INCOMPLETE	9/21/2016	0	0	.	9
WSH	7225	PIERCE	MISD	INCOMPLETE	9/21/2016	0	0	.	9
WSH	7226	THURSTON	FELONY	FAXED	9/21/2016	0	0	6	.
WSH	7227	KING	MISD	INCOMPLETE	9/21/2016	0	0	.	9
WSH	7228	KING	MISD	FAXED	9/21/2016	0	0	9	.
WSH	7229	GRAYS H	FELONY	INCOMPLETE	9/21/2016	0	0	.	9
WSH	7230	CLARK	MISD	INCOMPLETE	9/21/2016	0	0	.	9
WSH	7231	KING	MISD	FAXED	9/21/2016	0	0	7	.
WSH	7232	THURSTON	FELONY	FAXED	9/21/2016	0	0	7	.
WSH	7233	KITSAP	FELONY	FAXED	9/21/2016	1	1	7	.
WSH	7234	SNOHOMISH	MISD	INCOMPLETE	9/21/2016	0	0	.	9

WSH	7235	THURSTON	MISDEMEANOR	INCOMPLETE	9/21/2016	0	0	.	9
WSH	7236	KING	MISD	FAXED	9/21/2016	0	0	9	.
WSH	7237	CLARK	MISD	WITHDRAWN	9/21/2016	0	0	6	.
WSH	7238	SNOHOMISH	FELONY	INCOMPLETE	9/21/2016	0	0	.	9
WSH	7239	THURSTON	FELONY	INCOMPLETE	9/21/2016	0	0	.	9
WSH	7240	KING	MISD	FAXED	9/21/2016	0	0	7	.
WSH	7241	GRAYS H	MISD	INCOMPLETE	9/22/2016	0	0	.	8
WSH	7242	SNOHOMISH	FELONY	INCOMPLETE	9/22/2016	0	0	.	8
WSH	7243	KING	MISD	INCOMPLETE	9/22/2016	0	0	.	8
WSH	7244	KING	FELONY	INCOMPLETE	9/22/2016	1	1	.	8
WSH	7245	KING	MISD	INCOMPLETE	9/22/2016	0	0	.	8
WSH	7246	SNOHOMISH	MISD	INCOMPLETE	9/22/2016	0	0	.	8
WSH	7247	KING	MISD	FAXED	9/22/2016	0	0	6	.
WSH	7248	KING	MISD	INCOMPLETE	9/22/2016	0	0	.	8
WSH	7249	KING	FELONY	FAXED	9/22/2016	1	1	7	.
WSH	7250	WHATCOM	FELONY	INCOMPLETE	9/22/2016	0	1	.	8
WSH	7251	COWLITZ	FELONY	INCOMPLETE	9/22/2016	0	0	.	8
WSH	7252	KING	MISD	INCOMPLETE	9/22/2016	0	0	.	8
WSH	7253	KING	FELONY	INCOMPLETE	9/22/2016	1	1	.	8
WSH	7254	SNOHOMISH	MISD	INCOMPLETE	9/22/2016	0	0	.	8
WSH	7255	SNOHOMISH	FELONY	INCOMPLETE	9/22/2016	1	1	.	8
WSH	7256	SKAGIT	FELONY	INCOMPLETE	9/22/2016	1	1	.	8
WSH	7257	CLARK	MISD	WITHDRAWN	9/22/2016	1	1	8	.
WSH	7258	CLARK	MISD	INCOMPLETE	9/22/2016	1	1	.	8
WSH	7259	MASON	MISD	INCOMPLETE	9/22/2016	0	0	.	8
WSH	7260	WHATCOM	FELONY	INCOMPLETE	9/22/2016	0	0	.	8
WSH	7261	WHATCOM	FELONY	INCOMPLETE	9/22/2016	0	0	.	8
WSH	7262	SKAGIT	FELONY	INCOMPLETE	9/22/2016	1	1	.	8
WSH	7263	WHATCOM	MISD	INCOMPLETE	9/23/2016	0	0	.	7
WSH	7264	KITSAP	FELONY	INCOMPLETE	9/23/2016	4	4	.	7
WSH	7265	CLALLAM	FELONY	INCOMPLETE	9/23/2016	3	3	.	7
WSH	7266	CLARK	FELONY	INCOMPLETE	9/23/2016	0	0	.	7

WSH	7267	CLARK	FELONY	FAXED	9/23/2016	0	0	7	.
WSH	7268	CLARK	MISD	FAXED	9/23/2016	0	0	7	.
WSH	7269	KING	MISD	FAXED	9/23/2016	0	0	7	.
WSH	7270	CLARK	FELONY	INCOMPLETE	9/23/2016	0	0	.	7
WSH	7271	KING	MISD	INCOMPLETE	9/23/2016	0	0	.	7
WSH	7272	KING	MISD	INCOMPLETE	9/23/2016	0	0	.	7
WSH	7273	KING	MISD	FAXED	9/23/2016	0	0	6	.
WSH	7274	KITSAP	MISD	INCOMPLETE	9/23/2016	4	4	.	7
WSH	7275	PIERCE	MISD	INCOMPLETE	9/26/2016	0	0	.	4
WSH	7276	KING	MISD	INCOMPLETE	9/26/2016	0	0	.	4
WSH	7277	KING	MISD	FAXED	9/26/2016	0	0	3	.
WSH	7278	CLALLAM	FELONY	INCOMPLETE	9/26/2016	1	1	.	4
WSH	7279	KING	FELONY	FAXED	9/26/2016	0	0	3	.
WSH	7280	CLALLAM	MISD	INCOMPLETE	9/26/2016	0	0	.	4
WSH	7281	KING	FELONY	INCOMPLETE	9/26/2016	0	0	.	4
WSH	7282	CLALLAM	MISD	INCOMPLETE	9/26/2016	0	0	.	4
WSH	7283	KING	MISD	INCOMPLETE	9/26/2016	1	1	.	4
WSH	7284	KING	MISD	INCOMPLETE	9/27/2016	1	1	.	3
WSH	7285	KING	MISD	INCOMPLETE	9/27/2016	0	0	.	3
WSH	7286	LEWIS	FELONY	INCOMPLETE	9/27/2016	0	0	.	3
WSH	7287	SNOHOMISH	FELONY	INCOMPLETE	9/27/2016	0	0	.	3
WSH	7288	PIERCE	MISD	WITHDRAWN	9/27/2016	0	0	1	.
WSH	7289	KING	MISD	INCOMPLETE	9/27/2016	1	1	.	3
WSH	7290	KITSAP	MISD	INCOMPLETE	9/27/2016	0	0	.	3
WSH	7291	MASON	MISD	INCOMPLETE	9/27/2016	0	0	.	3
WSH	7292	CLARK	MISD	INCOMPLETE	9/27/2016	0	0	.	3
WSH	7293	KITSAP	FELONY	INCOMPLETE	9/27/2016	0	0	.	3
WSH	7294	LEWIS	MISD	INCOMPLETE	9/27/2016	0	0	.	3
WSH	7295	THURSTON	FELONY	INCOMPLETE	9/27/2016	0	0	.	3
WSH	7296	SNOHOMISH	MISD	INCOMPLETE	9/28/2016	0	1	.	2
WSH	7297	KING	MISD	INCOMPLETE	9/28/2016	0	0	.	2
WSH	7298	KING	MISD	INCOMPLETE	9/28/2016	0	1	.	2

WSH	7299	SNOHOMISH	MISD	INCOMPLETE	9/28/2016	0	0	.	2
WSH	7300	GRAYS H	MISD	INCOMPLETE	9/28/2016	0	0	.	2
WSH	7301	KING	MISD	INCOMPLETE	9/28/2016	0	0	.	2
WSH	7302	THURSTON	FELONY	INCOMPLETE	9/28/2016	0	0	.	2
WSH	7303	KING	MISD	INCOMPLETE	9/28/2016	0	0	.	2
WSH	7304	PIERCE	MISD	INCOMPLETE	9/28/2016	0	0	.	2
WSH	7305	SNOHOMISH	MISD	INCOMPLETE	9/28/2016	0	0	.	2
WSH	7306	KING	MISD	INCOMPLETE	9/28/2016	0	0	.	2
WSH	7307	SNOHOMISH	FELONY	INCOMPLETE	9/29/2016	0	0	.	1
WSH	7308	KING	MISD	INCOMPLETE	9/29/2016	0	0	.	1
WSH	7309	MASON	MISD	INCOMPLETE	9/29/2016	0	0	.	1
WSH	7310	SKAGIT	FELONY	INCOMPLETE	9/29/2016	0	0	.	1
WSH	7311	LEWIS	FELONY	INCOMPLETE	9/29/2016	0	0	.	1
WSH	7312	WHATCOM	FELONY	INCOMPLETE	9/29/2016	0	0	.	1
WSH	7313	WHATCOM	MISD	INCOMPLETE	9/29/2016	0	0	.	1
WSH	7314	SNOHOMISH	MISD	INCOMPLETE	9/29/2016	0	0	.	1
WSH	7315	MASON	FELONY	INCOMPLETE	9/29/2016	0	0	.	1
WSH	7316	KING	MISD	INCOMPLETE	9/29/2016	0	0	.	1
WSH	7317	PIERCE	MISD	INCOMPLETE	9/30/2016	0	0	.	0
WSH	7318	KING	MISD	INCOMPLETE	9/30/2016	0	0	.	0
WSH	7319	KING	MISD	INCOMPLETE	9/30/2016	0	0	.	0
WSH	7320	JEFFERSON	MISD	INCOMPLETE	9/30/2016	0	0	.	0
WSH	7321	KING	MISD	INCOMPLETE	9/30/2016	0	0	.	0
WSH	7400	PIERCE	FELONY	BED O	9/1/2016	1	1	6	.
WSH	7401	KING	FELONY	BED O	9/2/2016	0	0	20	.
WSH	7402	KING	FELONY	INCOMPLETE	9/2/2016	24	24	.	28
WSH	7403	COWLITZ	FELONY	BED O	9/6/2016	0	0	13	.
WSH	7404	KING	FELONY	BED O	9/6/2016	0	0	.	24
WSH	7405	THURSTON	FELONY	BED O	9/7/2016	0	0	.	23
WSH	7406	KING	FELONY	BED O	9/7/2016	0	0	19	.
WSH	7407	KING	FELONY	BED O	9/8/2016	0	0	8	.
WSH	7408	PIERCE	MISD	BED O	9/8/2016	0	0	13	.

WSH	7409	THURSTON	FELONY	BED O	9/12/2016	0	0	16	.
WSH	7410	KING	MISD	INCOMPLETE	9/14/2016	1	1	.	16
WSH	7411	PIERCE	FELONY	INCOMPLETE	9/15/2016	0	0	.	15
WSH	7412	PIERCE	MISD	INCOMPLETE	9/16/2016	3	3	.	14
WSH	7413	PIERCE	FELONY	INCOMPLETE	9/16/2016	6	6	.	14
WSH	7414	PIERCE	FELONY	INCOMPLETE	9/16/2016	3	3	.	14
WSH	7415	PIERCE	FELONY	INCOMPLETE	9/16/2016	5	5	.	14
WSH	7416	KING	FELONY	INCOMPLETE	9/19/2016	0	0	.	11
WSH	7417	PIERCE	FELONY	INCOMPLETE	9/22/2016	1	1	.	8
WSH	7418	PIERCE	FELONY	INCOMPLETE	9/27/2016	0	0	.	3
WSH	7419	PIERCE	FELONY	INCOMPLETE	9/28/2016	1	1	.	2
WSH	7420	PIERCE	FELONY	BED O	9/29/2016	0	0	0	.
ESH	6883	YAKIMA	MISD	FAX	8/15/2016	0	0	17	.
ESH	6888	YAKIMA	FELONY	FAX	8/17/2016	1	1	16	.
ESH	6889	SPOKANE	FELONY	FAX	8/17/2016	1	1	16	.
ESH	6894	ASOTIN	FELONY	FAX	8/18/2016	0	1	14	.
ESH	6900	SPOKANE	FELONY	FAX	8/22/2016	1	1	22	.
ESH	6903	FRANKLIN	MISD	FAX	8/23/2016	0	0	23	.
ESH	6904	GRANT	FELONY	FAX	8/23/2016	1	1	9	.
ESH	6905	GRANT	MISD	FAX	8/24/2016	0	1	8	.
ESH	6906	BENTON	MISD	FAX	8/24/2016	0	0	9	.
ESH	6907	FRANKLIN	FELONY	FAX	8/24/2016	0	0	22	.
ESH	6908	BENTON	MISD	FAX	8/24/2016	0	0	9	.
ESH	6910	SPOKANE	MISD	FAX	8/25/2016	0	0	22	.
ESH	7038	SPOKANE	FELONY	FAX	8/14/2016	4	4	23	.
ESH	7043	YAKIMA	FELONY	FAX	8/18/2016	1	4	20	.
ESH	7044	YAKIMA	FELONY	FAX	8/19/2016	3	3	19	.
ESH	7045	BENTON	MISD	FAX	8/24/2016	7	7	19	.
ESH	7046	SPOKANE	FELONY	FAX	8/25/2016	1	1	25	.
ESH	7047	SPOKANE	FELONY	FAX	8/26/2016	0	0	12	.
ESH	7048	SPOKANE	FELONY	FAX	8/26/2016	0	0	13	.
ESH	7049	SPOKANE	FELONY	FAX	8/26/2016	3	3	14	.



ESH	7050	ASOTIN	FELONY	ADMISSION	8/29/2016	1	1	3	.
ESH	7051	ASOTIN	FELONY	ADMISSION	8/29/2016	1	1	3	.
ESH	7053	DOUGLAS	MISD	FAX	8/29/2016	0	0	16	.
ESH	7054	GRANT	FELONY	FAX	8/29/2016	1	1	15	.
ESH	7055	SPOKANE	FELONY	FAX	8/29/2016	0	2	15	.
ESH	7056	SPOKANE	MISD	ADMISSION	8/30/2016	16	16	20	.
ESH	7057	SPOKANE	MISD	FAX	8/30/2016	0	0	13	.
ESH	7058	FRANKLIN	MISD	FAX	8/30/2016	0	0	17	.
ESH	7059	FRANKLIN	FELONY	FAX	8/30/2016	0	0	15	.
ESH	7060	FRANKLIN	MISD	FAX	8/30/2016	0	0	14	.
ESH	7061	STEVENS	FELONY	FAX	8/30/2016	1	0	13	.
ESH	7062	FRANKLIN	FELONY	FAX	8/30/2016	1	1	14	.
ESH	7063	COLUMBIA	FELONY	ADMISSION	8/31/2016	1	1	8	.
ESH	7065	SPOKANE	MISD	FAX	8/31/2016	0	0	.	30
ESH	7067	SPOKANE	FELONY	FAX	8/31/2016	1	1	19	.
ESH	7325	PEND O	FELONY	FAX	8/11/2016	0	0	.	50
ESH	7326	WALLA	FELONY	FAX	8/12/2016	3	3	.	49
ESH	7327	YAKIMA	MISD	FAX	8/12/2016	3	0	.	49
ESH	7352	SPOKANE	FELONY	FAX	9/1/2016	1	1	14	.
ESH	7353	BENTON	FELONY	FAX	9/1/2016	0	0	13	.
ESH	7354	YAKIMA	MISD	FAX	9/2/2016	4	4	.	28
ESH	7355	YAKIMA	FELONY	FAX	9/2/2016	0	0	17	.
ESH	7356	LINCOLN	FELONY	FAX	9/6/2016	0	0	.	24
ESH	7357	YAKIMA	MISD	FAX	9/6/2016	1	1	13	.
ESH	7358	GRANT	FELONY	FAX	9/6/2016	0	0	7	.
ESH	7359	CHELAN	FELONY	FAX	9/7/2016	0	1	14	.
ESH	7360	OKANOGAN	FELONY	FAX	9/7/2016	0	0	7	.
ESH	7361	SPOKANE	MISD	FAX	9/8/2016	0	0	.	22
ESH	7362	PEND O.	FELONY	FAX	9/8/2016	0	0	12	.
ESH	7363	SPOKANE	FELONY	FAX	9/9/2016	3	3	.	21
ESH	7364	SPOKANE	FELONY	FAX	9/9/2016	5	5	.	21
ESH	7365	BENTON	MISD	FAX	9/9/2016	0	0	6	.

ESH	7366	OKANOGAN	FELONY	FAX	9/12/2016	1	1	16	.
ESH	7368	SPOKANE	MISD	FAX	9/12/2016	0	0	11	.
ESH	7369	SPOKANE	FELONY	FAX	9/13/2016	0	0	15	.
ESH	7370	SPOKANE	FELONY	FAX	9/13/2016	1	1	14	.
ESH	7371	FRANKLIN	MISD	FAX	9/14/2016	6	6	.	16
ESH	7372	BENTON	FELONY	FAX	9/14/2016	5	5	.	16
ESH	7373	FRANKLIN	MISD	FAX	9/14/2016	0	0	9	.
ESH	7374	BENTON	FELONY	FAX	9/15/2016	0	0	.	15
ESH	7375	KITTITAS	FELONY	FAX	9/15/2016	1	1	.	15
ESH	7376	BENTON	FELONY	FAX	9/15/2016	0	0	12	.
ESH	7377	YAKIMA	MISD	FAX	9/15/2016	0	0	12	.
ESH	7378	YAKIMA	MISD	FAX	9/16/2016	0	0	.	14
ESH	7379	SPOKANE	FELONY	FAX	9/16/2016	0	0	.	14
ESH	7380	OKANOGAN	FELONY	FAX	9/20/2016	1	1	.	10
ESH	7381	FRANKLIN	FELONY	FAX	9/20/2016	2	2	.	10
ESH	7382	BENTON	MISD	FAX	9/20/2016	0	0	.	10
ESH	7383	SPOKANE	FELONY	FAX	9/20/2016	0	0	.	10
ESH	7384	CHELAN	MISD	FAX	9/20/2016	0	0	.	10
ESH	7385	BENTON	MISD	FAX	9/21/2016	0	0	8	.
ESH	7386	BENTON	FELONY	FAX	9/22/2016	0	0	.	8
ESH	7387	CHELAN	MISD	FAX	9/22/2016	0	0	.	8
ESH	7388	YAKIMA	MISD	FAX	9/23/2016	3	3	.	7
ESH	7389	SPOKANE	FELONY	FAX	9/23/2016	0	3	.	7
ESH	7390	SPOKANE	FELONY	FAX	9/26/2016	0	0	.	4
ESH	7391	SPOKANE	FELONY	FAX	9/26/2016	1	1	.	4
ESH	7392	GRANT	FELONY	FAX	9/27/2016	1	1	.	3
ESH	7393	SPOKANE	FELONY	FAX	9/27/2016	0	0	.	3
ESH	7394	CHELAN	MISD	FAX	9/27/2016	0	1	.	3
ESH	7395	BENTON	MISD	FAX	9/28/2016	0	1	.	2
ESH	7396	SPOKANE	MISD	FAX	9/28/2016	0	0	.	2
ESH	7397	SPOKANE	MISD	FAX	9/28/2016	0	0	.	2
ESH	7398	BENTON	MISD	FAX	9/28/2016	0	1	.	2

ESH	7399	SPOKANE	MISD	FAX	9/29/2016	0	0	.	1
ESH	7422	YAKIMA	MISD	ADMISSION	9/1/2016	0	0	7	.
ESH	7423	SPOKANE	MISD	ADMISSION	9/2/2016	0	.	7	.
ESH	7424	CHELAN	FELONY	ADMISSION	9/6/2016	0	0	6	.
ESH	7425	OKANOGAN	FELONY	ADMISSION	9/12/2016	0	.	3	.
ESH	7426	ADAMS	FELONY	ADMISSION	9/19/2016	1	1	3	.
ESH	7427	SPOKANE	FELONY	ADMISSION	9/20/2016	0	0	6	.
ESH	7428	OKANOGAN	FELONY	ADMISSION	9/22/2016	1	1	5	.
ESH	7429	YAKIMA	FELONY	ADMISSION	9/22/2016	0	0	6	.
ESH	7430	YAKIMA	MISD	ADMISSION	9/27/2016	0	0	.	3

**Appendix F: Class Member--Restoration Information for September 2016**

Hospital	Class Member	County	Offense	Completion Method or Incomplete	Order Signed Date	Number of days from signed order to:			
						Order Received	Discovery	Complete	Incomplete to end of Reporting Period
WSH	6923	KING	FELONY	BED O	8/3/2016	0	0	36	.
WSH	6928	LEWIS	FELONY	BED O	8/4/2016	1	1	49	.
WSH	6929	PIERCE	FELONY	BED O	8/4/2016	1	1	39	.
WSH	6933	PIERCE	FELONY	BED O	8/5/2016	0	0	39	.
WSH	6938	COWLITZ	FELONY	BED O	8/9/2016	0	0	34	.
WSH	6940	COWLITZ	FELONY	BED O	8/9/2016	0	0	34	.
WSH	6943	KITSAP	FELONY	BED O	8/10/2016	1	1	36	.
WSH	6945	KING	MISD	BED O	8/10/2016	0	0	22	.
WSH	6953	PIERCE	FELONY	BED O	8/11/2016	1	1	39	.
WSH	6954	PIERCE	FELONY	BED O	8/12/2016	0	0	32	.
WSH	6955	PIERCE	FELONY	BED O	8/12/2016	0	0	34	.
WSH	6958	PIERCE	FELONY	BED O	8/12/2016	3	17	33	.
WSH	6960	THURSTON	FELONY	BED O	8/15/2016	3	3	37	.
WSH	6962	THURSTON	FELONY	BED O	8/15/2016	8	8	37	.
WSH	6964	THURSTON	MISD	BED O	8/16/2016	0	0	17	.
WSH	6965	PIERCE	FELONY	INCOMPLETE	8/16/2016	2	2	.	45
WSH	6969	SNOHOMISH	FELONY	BED O	8/18/2016	0	0	35	.
WSH	6972	WHATCOM	MISD	BED O	8/18/2016	0	0	21	.
WSH	6973	PIERCE	MISD	BED O	8/18/2016	4	4	14	.
WSH	6974	PIERCE	FELONY	BED O	8/18/2016	0	0	36	.
WSH	6977	THURSTON	MISD	BED O	8/18/2016	1	1	32	.
WSH	6979	KING	FELONY	BED O	8/22/2016	1	1	39	.
WSH	6981	PIERCE	FELONY	INCOMPLETE	8/22/2016	1	1	.	39
WSH	6985	CLARK	FELONY	BED O	8/24/2016	1	1	.	37
WSH	6986	KING	FELONY	INCOMPLETE	8/24/2016	1	1	.	37

WSH	6988	PIERCE	MISD	BED O	8/24/2016	0	0	20	.
WSH	6989	PIERCE	FELONY	BED O	8/25/2016	1	1	29	.
WSH	6991	PIERCE	FELONY	BED O	8/26/2016	3	3	11	.
WSH	6993	SNOHOMISH	FELONY	BED O	8/26/2016	3	3	7	.
WSH	6994	PIERCE	FELONY	INCOMPLETE	8/26/2016	3	3	.	35
WSH	6997	KITSAP	MISD	BED O	8/29/2016	0	0	21	.
WSH	6999	KITSAP	FELONY	INCOMPLETE	8/30/2016	1	1	.	31
WSH	7000	PIERCE	MISD	INCOMPLETE	8/30/2016	1	1	.	31
WSH	7003	KING	FELONY	INCOMPLETE	8/31/2016	1	1	.	30
WSH	7004	PIERCE	FELONY	INCOMPLETE	8/31/2016	0	0	.	30
WSH	7431	COWLITZ	FELONY	BED O	8/2/2016	31	31	48	.
WSH	7432	THURSTON	FELONY	BED O	8/29/2016	9	9	17	.
WSH	7436	PIERCE	FELONY	INCOMPLETE	9/1/2016	1	1	.	29
WSH	7437	KITSAP	FELONY	INCOMPLETE	9/1/2016	0	0	.	29
WSH	7438	PIERCE	FELONY	INCOMPLETE	9/1/2016	1	1	.	29
WSH	7440	PIERCE	FELONY	BED O	9/1/2016	7	7	0	.
WSH	7443	KING	MISD	BED O	9/2/2016	0	0	19	.
WSH	7445	PIERCE	MISD	BED O	9/2/2016	5	5	18	.
WSH	7446	GRAYS H	FELONY	BED O	9/6/2016	1	1	8	.
WSH	7447	PIERCE	FELONY	INCOMPLETE	9/6/2016	0	2	.	24
WSH	7449	PIERCE	FELONY	BED O	9/7/2016	1	1	0	.
WSH	7450	PIERCE	FELONY	BED O	9/7/2016	1	1	7	.
WSH	7452	PIERCE	FELONY	INCOMPLETE	9/7/2016	1	1	.	23
WSH	7453	PIERCE	FELONY	INCOMPLETE	9/7/2016	0	0	.	23
WSH	7454	GRAYS H	FELONY	BED O	9/8/2016	0	0	0	.
WSH	7455	KING	FELONY	BED O	9/8/2016	0	0	0	.
WSH	7456	PIERCE	FELONY	BED O	9/9/2016	0	0	5	.
WSH	7457	KITSAP	MISD	INCOMPLETE	9/9/2016	7	7	.	21
WSH	7458	KING	MISD	CANCELLED	9/9/2016	0	0	13	.
WSH	7459	PIERCE	MISD	BED O	9/9/2016	0	0	14	.
WSH	7460	PIERCE	FELONY	BED O	9/9/2016	0	0	10	.
WSH	7461	SNOHOMISH	MISD	INCOMPLETE	9/9/2016	0	0	.	21

WSH	7462	THURSTON	FELONY	INCOMPLETE	9/12/2016	2	2	.	18
WSH	7463	PIERCE	FELONY	INCOMPLETE	9/12/2016	0	0	.	18
WSH	7464	THURSTON	FELONY	INCOMPLETE	9/12/2016	1	1	.	18
WSH	7465	PIERCE	MISD	BED O	9/12/2016	0	0	11	.
WSH	7466	THURSTON	FELONY	BED O	9/12/2016	0	0	15	.
WSH	7468	THURSTON	FELONY	BED O	9/12/2016	1	1	8	.
WSH	7470	KITSAP	FELONY	INCOMPLETE	9/12/2016	0	0	.	18
WSH	7471	KING	FELONY	INCOMPLETE	9/13/2016	0	0	.	17
WSH	7472	THURSTON	FELONY	INCOMPLETE	9/13/2016	0	0	.	17
WSH	7474	KITSAP	MISD	INCOMPLETE	9/13/2016	0	0	.	17
WSH	7475	KING	FELONY	INCOMPLETE	9/13/2016	0	0	.	17
WSH	7476	CLARK	FELONY	BED O	9/14/2016	0	0	5	.
WSH	7477	KING	MISD	INCOMPLETE	9/14/2016	0	0	.	16
WSH	7478	PIERCE	FELONY	BED O	9/14/2016	0	0	7	.
WSH	7480	ISLAND	FELONY	BED O	9/14/2016	1	1	0	.
WSH	7483	PIERCE	FELONY	INCOMPLETE	9/15/2016	4	4	.	15
WSH	7484	SNOHOMISH	FELONY	BED O	9/15/2016	0	0	0	.
WSH	7485	WHATCOM	FELONY	INCOMPLETE	9/15/2016	0	0	.	15
WSH	7486	KING	MISD	BED O	9/15/2016	0	0	15	.
WSH	7487	CLARK	FELONY	INCOMPLETE	9/15/2016	0	0	.	15
WSH	7488	KING	FELONY	INCOMPLETE	9/15/2016	0	0	.	15
WSH	7489	PIERCE	FELONY	INCOMPLETE	9/15/2016	0	0	.	15
WSH	7490	LEWIS	FELONY	INCOMPLETE	9/15/2016	4	4	.	15
WSH	7491	KING	MISD	INCOMPLETE	9/15/2016	0	0	.	15
WSH	7493	THURSTON	MISD	INCOMPLETE	9/16/2016	11	11	.	14
WSH	7494	GRAYS H	FELONY	INCOMPLETE	9/19/2016	0	0	.	11
WSH	7496	PIERCE	FELONY	BED O	9/20/2016	1	1	0	.
WSH	7497	KING	FELONY	INCOMPLETE	9/20/2016	0	0	.	10
WSH	7498	KITSAP	MISD	INCOMPLETE	9/20/2016	0	0	.	10
WSH	7499	CLARK	FELONY	INCOMPLETE	9/20/2016	0	0	.	10
WSH	7501	LEWIS	FELONY	INCOMPLETE	9/21/2016	0	0	.	9
WSH	7503	KING	MISD	INCOMPLETE	9/21/2016	0	0	.	9

WSH	7504	KING	MISD	INCOMPLETE	9/21/2016	0	0	.	9
WSH	7506	KING	FELONY	BED O	9/21/2016	0	0	0	.
WSH	7507	PIERCE	FELONY	INCOMPLETE	9/21/2016	0	0	.	9
WSH	7508	WHATCOM	FELONY	INCOMPLETE	9/22/2016	0	0	.	8
WSH	7509	THURSTON	FELONY	BED O	9/22/2016	0	0	.	8
WSH	7510	KITSAP	FELONY	BED O	9/22/2016	1	1	0	.
WSH	7511	MASON	MISD	INCOMPLETE	9/22/2016	0	0	.	8
WSH	7512	SKAGIT	FELONY	INCOMPLETE	9/22/2016	0	0	.	8
WSH	7513	PIERCE	FELONY	INCOMPLETE	9/22/2016	4	4	.	8
WSH	7514	CLARK	MISD	INCOMPLETE	9/23/2016	0	0	.	7
WSH	7515	GRAYS H	FELONY	INCOMPLETE	9/23/2016	3	3	.	7
WSH	7516	THURSTON	FELONY	INCOMPLETE	9/26/2016	0	0	.	4
WSH	7517	PIERCE	FELONY	INCOMPLETE	9/26/2016	0	0	.	4
WSH	7518	KING	FELONY	BED O	9/26/2016	0	0	0	.
WSH	7519	KITSAP	MISD	INCOMPLETE	9/27/2016	0	0	.	3
WSH	7520	KING	MISD	INCOMPLETE	9/27/2016	0	0	.	3
WSH	7521	KING	MISD	INCOMPLETE	9/28/2016	0	0	.	2
WSH	7522	PIERCE	FELONY	INCOMPLETE	9/28/2016	1	1	.	2
WSH	7523	PIERCE	FELONY	INCOMPLETE	9/28/2016	0	0	.	2
WSH	7524	KING	FELONY	INCOMPLETE	9/28/2016	0	0	.	2
ESH	7525	GRANT	FELONY	ADMISSION	9/1/2016	0	0	6	.
ESH	7526	OKANOGAN	FELONY	ADMISSION	9/1/2016	0	0	5	.
ESH	7527	SPOKANE	MISD	ADMISSION	9/1/2016	0	0	8	.
ESH	7528	YAKIMA	FELONY	ADMISSION	9/6/2016	0	0	0	.
ESH	7529	YAKIMA	MISD	ADMISSION	9/6/2016	0	0	7	.
ESH	7530	SPOKANE	FELONY	ADMISSION	9/7/2016	1	1	5	.
ESH	7531	YAKIMA	FELONY	ADMISSION	9/7/2016	0	0	6	.
ESH	7532	YAKIMA	FELONY	ADMISSION	9/9/2016	0	0	0	.
ESH	7533	SPOKANE	FELONY	ADMISSION	9/9/2016	3	3	7	.
ESH	7534	CHELAN	FELONY	ADMISSION	9/14/2016	0	0	.	16
ESH	7535	COLUMBIA	FELONY	ADMISSION	9/14/2016	1	1	1	.
ESH	7536	FRANKLIN	FELONY	ADMISSION	9/15/2016	0	0	4	.

ESH	7537	YAKIMA	FELONY	ADMISSION	9/15/2016	0	0	6	.
ESH	7538	YAKIMA	FELONY	ADMISSION	9/16/2016	0	0	5	.
ESH	7539	SPOKANE	FELONY	ADMISSION	9/19/2016	0	0	4	.
ESH	7540	YAKIMA	FELONY	ADMISSION	9/20/2016	0	0	2	.
ESH	7541	SPOKANE	FELONY	ADMISSION	9/21/2016	0	0	5	.
ESH	7542	FRANKLIN	MISD	ADMISSION	9/22/2016	0	0	6	.
ESH	7543	CHELAN	FELONY	ADMISSION	9/28/2016	0	0	.	2
ESH	7544	SPOKANE	FELONY	ADMISSION	9/29/2016	0	0	.	1

### **Appendix G: Class Member--Restoration Information for September 2016 – Maple Lane**

Hospital	Class Member	County	Offense	Completion Method or Incomplete	Order Signed Date	Number of days from signed order to:			
						Order Received Date	Discovery	Complete	Incomplete to end of Reporting Period
WSH	7495	COWLITZ	FELONY	BED O	9/20/2016	1	1	0	.
WSH	7444	MASON	FELONY	BED O	9/2/2016	4	4	7	.
WSH	7451	CLALLAM	MISD	BED O	9/7/2016	0	0	9	.
WSH	7442	SNOHOMISH	FELONY	BED O	9/2/2016	0	0	10	.
WSH	7435	WHATCOM	FELONY	BED O	9/1/2016	0	0	12	.
WSH	7481	KING	FELONY	BED O	9/14/2016	0	0	12	.
WSH	7433	KITSAP	FELONY	BED O	9/1/2016	5	5	13	.
WSH	7439	KING	FELONY	BED O	9/1/2016	0	0	13	.
WSH	7479	JEFFERSON	MISD	BED O	9/14/2016	0	0	13	.
WSH	7005	CLARK	FELONY	BED O	8/31/2016	0	0	14	.
WSH	7006	KING	FELONY	BED O	8/31/2016	0	0	15	.
WSH	7467	PACIFIC	FELONY	BED O	9/12/2016	0	0	15	.
WSH	7441	COWLITZ	MISD	BED O	9/1/2016	1	1	18	.



**Appendix H: Class Member--Restoration Information for September 2016 – Yakima**

Hospital	Class Member	County	Offense	Completion Method or Incomplete	Order Signed Date	Number of days from signed order to:			
						Order Received Date	Discovery	Complete	Incomplete to end of Reporting Period
WSH	7502	CLARK	FELONY	BED O	9/21/2016	0	0	0	.
WSH	7473	KITSAP	MISD	BED O	9/13/2016	0	0	9	.
WSH	7001	SNOHO	FELONY	BED O	8/31/2016	0	0	12	.
WSH	7002	KING	FELONY	BED O	8/31/2016	0	0	12	.
WSH	7482	KING	FELONY	BED O	9/15/2016	0	0	12	.
WSH	7434	KING	FELONY	BED O	9/1/2016	0	0	13	.
WSH	6976	SNOHO	FELONY	BED O	8/18/2016	0	0	14	.
WSH	7492	KING	FELONY	BED O	9/15/2016	0	0	14	.
WSH	7469	KING	FELONY	BED O	9/12/2016	0	0	15	.
WSH	7448	KING	FELONY	BED O	9/7/2016	0	0	22	.
WSH	7500	KING	FELONY	BED O	9/21/2016	0	0	.	9
WSH	7505	KING	FELONY	BED O	9/21/2016	0	0	.	9

**Appendix I: Calculation of Contempt Fines – Sent as an attachment to this report**

Please see attachment

**Appendix J: Outliers and Delay Comments**

Hospital	Class Member	Location	County	Completion Method or Incomplete	Order Signed Date	Number of Days from signed order:			Delay Comments
						Order Received	Discovery	Incomplete to end of Reporting Period	
<b>EVALUATIONS</b>									
ESH	7325	JAIL	PEND OREILLE	FAX	8/11/2016	0	0	50	Defendant would not participate with evaluation
ESH	7326	JAIL	WALLA WALLA	FAX	8/12/2016	3	3	49	Defendant would not participate w/o attorney present
ESH	7327	JAIL	YAKIMA	FAX	8/12/2016	3	0	49	Defendant would not participate w/o attorney present
ESH	7065	JAIL	SPOKANE	FAX	8/31/2016	0	0	30	Police reports
ESH	7354	JAIL	YAKIMA	FAX	9/2/2016	4	4	28	Defendant would not participate w/o attorney present
ESH	7356	JAIL	LINCOLN	FAX	9/6/2016	0	0	24	Evaluated 9/12/2016 - faxed 10/3/2016.
ESH	7361	JAIL	SPOKANE	FAX	9/8/2016	0	0	22	Evaluated 9/14/2016 - faxed 10/3/2016.
ESH	7363	JAIL	SPOKANE	FAX	9/9/2016	3	3	21	Evaluated 9/14/2016 - faxed 10/3/2016.
ESH	7364	JAIL	SPOKANE	FAX	9/9/2016	5	5	21	Received court order on 9/14, 5 days late. Evaluated on 9/19/2016, faxed on 10/3/2016.
WSH	7018	JAIL	PIERCE	INCOMPLETE	8/17/2016	35	35	44	Report faxed 10/04/2016
WSH	6784	JAIL	KING	INCOMPLETE	8/18/2016	0	0	43	Report faxed 10/03/2017
WSH	7019	INPATIENT	PIERCE	INCOMPLETE	8/18/2016	4	4	43	Notified of PR status change on 10/05/2016
WSH	6822	INPATIENT	KING	INCOMPLETE	8/25/2016	1	1	36	Admitted 10/12/2016
WSH	7402	INPATIENT	KING	INCOMPLETE	9/2/2016	24	24	28	Order cancelled on 10/05/2016; new order received. Admitted on 10/07/2016
WSH	7404	INPATIENT	KING	BED OFFERED	9/6/2016	0	0	24	Admitted 10/03/2016
WSH	7405	INPATIENT	THURSTON	BED OFFERED	9/7/2016	0	0	23	Admitted 10/03/2017
WSH	7150	JAIL	WHATCOM	INCOMPLETE	9/9/2016	0	0	21	Report faxed 10/12/2016
<b>RESTORATION</b>									
WSH	6965	COMP RES	PIERCE	INCOMPLETE	8/16/2016	2	2	45	Admitted 10/20/2016