

***Cassie Cordell Trueblood, et al., v. Washington State Department
of Social and Health Services, et al.***
Case No. C14-1178 MJP
Draft Monthly Report to the Court Appointed Monitor

November 15, 2016

Behavioral Health Administration
Division of State Hospitals
PO Box 45050
Olympia, WA 98504-5050
(360) 725-2260
Fax: (360) 407-0304



TABLE OF CONTENTS

Background.....	Page 3
Class Member Status Summary Information.....	Page 4
Class Member Status Data Tables.....	Page 6
Class Member Status Data Graphs.....	Page 9
Resources Required to Provide Timely Competency Services.....	Page 13
Key Accomplishments-October 2016.....	Page 13
<i>Trueblood</i> Implementation Steps Taken and Planned—October 2016.....	Page 15
February 8, 2016 Court Order Status Report/Updates.....	Page 28
July 7, 2016 Contempt Court Order Status Updates.....	Page 32
August 15, 2016 Order Modifying the Permanent Injunction.....	Page 32
Appendices.....	Page 33
Appendix A: Class Member—Evaluation Information for September 2016.....	Page 33
Appendix B: Class Member—Restoration Information for September 2016.....	Page 49
Appendix C: Class Member-Restoration Information for September 2016 Maple Lane.....	Page 54
Appendix D: Class Member-Restoration Information for September 2016 Yakima.....	Page 55
Appendix E: Class Member—Evaluation Information for October 2016.....	Page 55
Appendix F: Class Member—Restoration Information for October 2016.....	Page 71
Appendix G: Class Member—Restoration Information for October 2016 Maple Lane.....	Page 76
Appendix H: Class Member—Restoration Information for October 2016 Yakima.....	Page 77
Appendix I: Calculation of Contempt Fines (separate attachment).....	Page 78
Appendix J: Outliers and Delay Comments.....	Page 78
Appendix K: Good Cause exception data (separate attachment).....	Page 80

BACKGROUND

On April 2, 2015, the Court ordered the Department of Social and Health Services (DSHS) to file monthly reports with the *Trueblood* Court Monitor on efforts to comply with Court orders to provide timely competency evaluation and restoration services to Class Members. This monthly report is submitted October 15, 2016 and covers the events of September 2016. This report also provides status updates on additional court order requirements.

On April 2, 2015, the Court ordered:

“Defendants shall file a report with the Monitor on the fifth day of every month, which shall include:

- (1) the number of days between when a court ordered provision of competency services and when provision was completed, for each person ordered to receive competency services during the previous month;*
- (2) data regarding the number of evaluators, bed capacity, physicians, and other resources needed to provide timely competency services;*
- (3) the steps taken in the previous months to implement this order;*
- (4) when and what results are intended to be realized by each of these steps;*
- (5) the results realized in the previous month;*
- (6) the steps planned to be taken in the following month;*
- (7) certification by Defendants that they are fully compliant with all deadlines that became due in the previous month;*
- (8) Defendants’ estimate for when the wait times will reach seven days or less, and all data relied on in making that estimate; and*
- (9) any other information the Monitor informs Defendants is necessary for the Monitor to fully review Defendants’ actions and advise the Court.”*

The April 2015 order was modified on February 8, 2016, another order was issued on July 7th, and another order was issued on August 15, 2016. Status updates on these orders begin on page 28.

This report provides the class member data for Competency Services displayed in two periods—September 1, 2016 – September 30, 2016 and October 1, 2016 - October 31, 2016. The September data are considered “mature” and the October data are a “first look” data set. April 2015 is the baseline month for data analysis.

Specific class member evaluation and restoration information is included in the appendices to this report.

CLASS MEMBER STATUS SUMMARY INFORMATION

Analysis of Data: April 1, 2015 through October 31, 2016

The average monthly referrals for each type of service are as follows:

- Average monthly jail-based evaluation orders signed for April 2015-October 2016
 - WSH: 207.3
 - ESH: 45.9
 - Both hospitals: 252.7
- Average monthly inpatient evaluation orders signed for April 2015- October 2016
 - WSH: 16.6
 - ESH: 6.0
 - Both hospitals: 22.6
- Average monthly restoration orders signed for April 2015- October 2016
 - WSH: 69.9
 - ESH: 12.1
 - Both hospitals: 81.9

Summary Points Related to Orders and Timeliness (see Tables 1-3 below for details)

- Jail-based evaluation orders at WSH was at 221 which is higher than the 207.3 average. ESH had 55 orders which is higher than the 45.9 average. Combined, the hospitals totaled 276 orders compared with a 252.7 average.
- In-patient evaluation orders at both sites remained at 34 in October which is higher than the 22.6 average. WSH received 22 compared with a 16.6 average. ESH had 12 orders which is higher than the 6.0 average.
- There were 94 restoration orders across both hospitals, down from 93 in September, but still well above the average of 81.9. WSH orders decreased to 76 in October versus 103 in September. ESH increased to 18 orders in October compared with 21 in September.
- Jail-based evaluation wait times remain relatively stable this month. WSH is averaging 13.0 days from order to completion (12.5 last month). ESH is averaging 15 days. The combined average is 13.5 days.
- The average inpatient evaluation wait times at WSH has increased, as the average is 23.7 days. The ESH average is at 5.6 days. The combined average is at 17.7 days.
- Restoration wait times at WSH are at 20.9 days on average. The ESH average for is at 5.5 days. The combined average is at 18 days.
- Overall timeliness for jail-based evaluations is at 50% being completed within 14 days.
- Overall timeliness for inpatient evaluations is at 22% completion rate within 7 days.
- Overall timeliness for inpatient restorations is at 15% completion rate within 7 days.

Outlier cases

There are no class members to report waiting more than 100 days. In October, there were no patients from ESH and 10 patients from WSH with an incomplete status and waiting more than 20 days for an evaluation by the end of the reporting period. There were 0 patients from ESH and 17 patients from WSH with an incomplete status and waiting more than 40 days for restoration services.

Please refer to appendix J in the final report for delay comments related to these 27 cases.

CLASS MEMBER STATUS DATA TABLES – TABLE 1a. Class Member Status Western State Hospital – Jail-based Competency Evaluations

WESTERN STATE HOSPITAL		Court Orders Signed	Days from order signature to:								Percent complete - within 7 days
			hospital receipt of order		hospital receipt of discovery		end of reporting month for incomplete referrals		completion		
			Average	Median	Average	Median	Average	Median	Average	Median	
Jail-based Evaluation - 7 day compliance	APR. 2015	176	1.3	0.0	1.9	1.0	9.5	6.0	14.6	14.0	14%
	MAY. 2015	183	1.3	0.0	1.6	0.0	11.4	9.0	13.0	11.0	16%
	JUN. 2015	212	1.7	0.0	2.1	1.0	10.9	8.0	17.8	15.0	10%
	JUL. 2015	236	1.4	0.0	1.8	0.0	12.3	9.0	18.4	17.0	6%
	AUG. 2015	185	1.9	0.0	2.2	0.0	13.4	11.0	20.7	20.0	7%
	SEP. 2015	202	1.6	0.0	1.7	0.0	11.7	8.0	17.6	16.0	10%
	OCT. 2015	213	1.9	0.0	2.0	0.0	16.7	15.0	16.4	15.0	19%
	NOV. 2015	164	1.8	0.0	1.9	0.0	18.0	13.0	16.0	14.0	28%
	DEC. 2015	195	1.6	0.0	1.7	0.0	13.7	8.5	15.5	14.0	14%
	JAN. 2016	181	1.3	0.0	1.2	0.0	15.6	9.0	13.3	12.0	28%
	FEB. 2016	205	0.6	0.0	0.6	0.0	6.6	5.0	10.0	8.0	45%
	MAR. 2016	220	0.7	0.0	0.8	0.0	6.1	3.0	8.9	7.0	59%
	APR. 2016	201	0.8	0.0	0.8	0.0	6.1	5.0	9.0	7.0	57%
MAY. 2016	212	0.7	0.0	0.8	0.0	6.4	5.0	9.6	7.5	50%	
JUN. 2016	219	0.9	0.0	0.9	0.0	7.5	6.5	10.8	8.0	31%	
			Average	Median	Average	Median	Average	Median	Average	Median	within 14 days
Jail-based Evaluation - 14 day compliance	JUL. 2016	228	0.7	0.0	0.8	0.0	9.4	6.0	12.2	9.0	47%
	AUG. 2016	229	0.8	0.0	0.9	0.0	7.6	6.0	13.1	11.0	51%
	SEP. 2016	256	0.6	0.0	0.8	0.0	6.7	7.0	12.5	11.0	45%
	OCT. 2016	221	0.5	0.0	0.9	0.0	8.3	6.0	13.0	12.0	52%

TABLE 1b. Class Member Status Western State Hospital – Inpatient Competency Services

WESTERN STATE HOSPITAL		Court Orders Signed	Days from order signature to:								Percent complete within 7 days of order
			hospital receipt of order		hospital receipt of discovery		end of reporting month for incomplete referrals		completion		
			Average	Median	Average	Median	Average	Median	Average	Median	
Inpatient Evaluation	APR. 2015	10	5.8	1.0	5.8	1.0	10.7	7.0	22.2	18.0	22%
	MAY. 2015	11	2.9	2.0	2.9	2.0	11.4	13.0	18.9	20.0	8%
	JUN. 2015	10	3.0	1.0	3.0	1.0	14.0	12.0	12.3	15.0	25%
	JUL. 2015	15	3.5	1.0	3.5	1.0	16.6	9.0	14.8	15.0	20%
	AUG. 2015	15	4.5	1.0	4.5	1.0	10.0	11.0	25.5	17.0	7%
	SEP. 2015	15	2.6	1.0	2.6	1.0	15.1	16.0	19.7	20.0	11%
	OCT. 2015	17	1.5	1.0	1.5	1.0	19.0	19.0	23.6	22.0	0%
	NOV. 2015	14	1.7	1.0	1.7	1.0	14.1	12.0	23.9	22.0	6%
	DEC. 2015	11	4.1	1.0	4.1	1.0	13.1	12.0	22.2	27.0	10%
	JAN. 2016	13	4.0	1.0	3.8	1.0	12.2	11.0	24.7	23.0	0%
	FEB. 2016	16	4.4	1.0	4.4	1.0	10.7	8.5	17.1	15.5	8%
	MAR. 2016	18	3.1	1.0	3.1	1.0	6.8	7.0	15.5	14.0	10%
	APR. 2016	20	1.1	0.0	1.1	0.0	8.6	8.5	18.6	17.5	6%
	MAY. 2016	18	1.7	1.0	1.7	1.0	9.5	6.0	18.9	21.0	16%
	JUN. 2016	16	3.4	1.0	3.4	1.0	11.8	7.5	25.0	26.0	0%
	JUL. 2016	19	4.7	2.0	4.7	2.0	7.5	4.0	17.3	14.5	6%
	AUG. 2016	33	2.8	1.0	2.8	1.0	13.1	13.0	14.1	13.5	13%
	SEP. 2016	23	2.5	1.0	2.5	1.0	14.0	14.0	15.2	14.0	11%
	OCT. 2016	22	1.4	0.0	1.4	0.0	17.4	18.0	23.7	22.0	5%
	Inpatient Restoration	APR. 2015	59	1.8	1.0	1.8	1.0	37.2	16.0	38.6	44.0
MAY. 2015		63	1.8	1.0	2.1	1.0	35.9	19.0	26.2	15.0	25%
JUN. 2015		39	1.7	1.0	2.1	1.0	16.8	8.0	34.2	25.0	7%
JUL. 2015		78	1.7	1.0	2.1	1.0	16.1	10.0	20.8	15.0	25%
AUG. 2015		63	2.1	1.0	2.1	1.0	22.5	19.0	23.6	33.0	24%
SEP. 2015		82	1.7	1.0	2.0	1.0	24.3	15.0	23.0	14.0	26%
OCT. 2015		76	1.8	1.0	2.1	1.0	21.2	23.0	32.1	45.0	20%
NOV. 2015		58	1.2	1.0	1.4	1.0	31.9	28.0	33.5	47.0	24%
DEC. 2015		66	1.5	1.0	2.0	1.0	27.3	22.0	39.0	48.0	19%
JAN. 2016		61	2.7	0.0	2.9	0.0	29.2	18.5	33.6	44.0	23%
FEB. 2016		63	2.7	1.0	3.3	1.0	24.2	21.0	33.1	41.0	14%
MAR. 2016		77	2.0	0.0	2.5	0.0	25.9	27.0	28.3	21.0	30%
APR. 2016		64	1.9	0.0	2.2	0.0	23.5	20.5	37.4	46.0	13%
MAY. 2016		70	1.7	0.0	2.0	0.0	23.1	21.5	29.0	24.5	25%
JUN. 2016		69	1.4	0.0	1.5	0.0	22.1	17.0	26.6	22.0	11%
JUL. 2016		68	1.7	0.0	1.7	0.0	11.8	6.0	21.8	18.0	14%
AUG. 2016		93	1.5	0.0	1.7	0.0	12.3	13.0	13.1	10.0	24%
SEP. 2016		103	1.6	0.0	1.7	0.0	14.4	11.0	16.8	14.0	13%
OCT. 2016		76	1.2	0.0	1.3	0.0	25.5	25.0	20.9	17.0	10%

TABLE 2a. Class Member Status Eastern State Hospital – Jail-based Competency Evaluations

EASTERN STATE HOSPITAL	Court Orders Signed	Days from order signature to:								Percent complete within 7 days of order	
		hospital receipt of order		hospital receipt of discovery		end of month for incomplete referrals		completion			
		Average	Median	Average	Median	Average	Median	Average	Median		
Jail-based Evaluation - 7 day compliance	APR. 2015	38	4.6	1.0	8.6	5.0	28.1	28.0	61.3	57.0	0%
	MAY. 2015	37	4.3	1.0	8.8	6.0	37.0	33.0	56.9	57.0	0%
	JUN. 2015	38	4.1	1.0	8.3	6.0	38.0	39.0	65.6	64.0	0%
	JUL. 2015	45	4.2	1.0	8.9	6.0	32.6	30.0	66.5	64.0	0%
	AUG. 2015	32	2.4	1.0	6.4	5.0	33.4	32.0	57.7	56.0	3%
	SEP. 2015	51	2.3	1.0	4.9	4.0	29.1	14.0	53.5	55.0	3%
	OCT. 2015	33	1.9	0.0	4.9	4.0	16.4	10.0	39.5	40.0	3%
	NOV. 2015	32	1.8	0.0	5.9	5.0	28.3	26.0	47.4	49.0	0%
	DEC. 2015	48	1.7	0.0	3.2	1.0	21.7	18.0	38.7	35.0	3%
	JAN. 2016	46	4.7	0.0	7.4	1.0	13.4	9.0	36.6	27.5	10%
	FEB. 2016	39	1.4	0.0	2.0	1.0	10.4	6.0	15.5	12.0	25%
	MAR. 2016	66	1.4	0.0	1.3	1.0	11.8	8.0	12.6	10.0	16%
	APR. 2016	39	1.4	0.0	1.7	0.0	11.0	6.5	14.5	12.0	11%
	MAY. 2016	46	2.0	0.0	2.3	0.0	13.7	8.0	15.0	11.5	16%
	JUN. 2016	63	1.4	0.0	1.6	0.0	8.2	7.0	14.1	13.0	7%
Jail-based Evaluation - 14 day compliance			Average	Median	Average	Median	Average	Median	Average	Median	within 14 days
	JUL. 2016	46	2.0	0.5	2.2	1.0	11.3	9.0	16.0	14.0	32%
	AUG. 2016	66	0.9	0.0	1.1	0.0	6.3	6.0	14.4	14.0	38%
	SEP. 2016	52	0.9	0.0	0.9	0.0	9.6	7.5	14.2	14.0	58%
	OCT. 2016	55	1.3	0.0	1.6	0.0	9.2	10.0	15.0	14.0	39%

TABLE 2b. Class Member Status Eastern State Hospital – Inpatient Competency Services

EASTERN STATE HOSPITAL	Court Orders Signed	Days from order signature to:								Percent complete within 7 days of order	
		hospital receipt of order		hospital receipt of discovery		end of reporting month for incomplete referrals		completion			
		Average	Median	Average	Median	Average	Median	Average	Median		
Inpatient Evaluation	APR. 2015	9	8.9	1.0	13.9	5.0	47.9	43.0	56.3	59.0	0%
	MAY. 2015	4	10.1	1.0	14.2	5.0	65.8	61.0	69.5	69.5	0%
	JUN. 2015	4	7.7	1.0	11.1	5.0	75.2	68.0	89.9	102.0	0%
	JUL. 2015	2	7.5	1.0	11.4	5.0	50.9	14.0	91.8	81.0	0%
	AUG. 2015	5	10.2	1.0	19.6	5.0	44.5	31.0	78.2	80.0	0%
	SEP. 2015	5	6.7	1.0	10.2	4.0	42.6	47.0	32.0	32.0	0%
	OCT. 2015	8	2.0	1.0	7.9	6.0	28.9	16.0	61.1	70.0	0%
	NOV. 2015	3	2.8	0.0	9.6	7.0	44.2	46.0	49.0	49.0	0%
	DEC. 2015	12	2.4	1.0	4.2	2.0	21.1	20.5	83.6	84.0	0%
	JAN. 2016	7	5.4	1.0	8.9	2.0	30.9	31.0	52.9	51.0	0%
	FEB. 2016	2	12.9	1.0	16.3	2.0	47.5	31.0	50.9	56.0	0%
	MAR. 2016	5	15.5	1.0	16.3	1.0	19.2	15.5	69.2	45.0	0%
	APR. 2016	2	4.9	0.5	5.6	1.0	7.5	7.5	44.0	39.0	0%
	MAY. 2016	2	0.3	0.0	0.3	0.0	0.0	0.0	12.5	11.5	50%
	JUN. 2016	7	2.5	0.0	2.5	0.0	10.0	9.0	11.4	11.0	13%
	JUL. 2016	2	3.1	1.0	3.5	1.0	4.0	4.0	20.2	20.5	14%
	AUG. 2016	12	1.2	0.0	1.3	0.0	1.3	1.0	4.9	6.0	100%
	SEP. 2016	11	1.6	0.5	1.6	1.0	3.0	3.0	6.5	6.0	73%
	OCT. 2016	12	0.7	0.0	0.8	0.0	4.3	4.0	5.6	6.0	69%
Inpatient Restoration	APR. 2015	12	6.8	1.0	8.1	1.0	25.3	22.0	0.0	0.0	100%
	MAY. 2015	3	6.3	1.0	7.9	2.0	35.0	41.0	54.7	62.0	0%
	JUN. 2015	4	0.6	1.0	1.8	1.0	45.3	39.0	46.0	56.0	20%
	JUL. 2015	11	1.3	0.0	4.5	2.0	16.2	11.0	45.3	56.0	33%
	AUG. 2015	15	1.6	0.0	5.7	3.0	26.4	27.0	35.5	35.5	50%
	SEP. 2015	7	1.5	0.0	4.6	1.0	37.2	35.0	20.4	1.0	57%
	OCT. 2015	10	3.2	0.0	6.4	4.0	45.6	37.0	87.4	93.0	0%
	NOV. 2015	9	2.4	0.0	4.1	2.0	51.7	48.0	90.8	92.0	0%
	DEC. 2015	6	3.8	0.0	4.2	0.5	26.3	20.0	84.7	86.5	0%
	JAN. 2016	15	2.3	0.0	2.7	0.0	31.1	19.0	53.8	58.0	25%
	FEB. 2016	18	2.0	0.0	2.3	0.0	24.2	24.0	55.8	43.5	0%
	MAR. 2016	12	1.1	0.0	1.1	0.0	27.7	23.0	45.2	46.5	0%
	APR. 2016	12	1.5	0.0	1.7	1.0	16.3	11.5	30.4	31.0	0%
	MAY. 2016	18	1.5	0.0	1.6	0.0	10.2	13.0	9.9	7.0	53%
	JUN. 2016	20	0.4	0.0	0.4	0.0	7.8	10.0	9.5	9.5	22%
	JUL. 2016	11	0.7	0.0	0.7	0.0	2.0	2.0	7.2	5.0	60%
	AUG. 2016	7	0.4	0.0	0.4	0.0	0.0	0.0	4.6	5.5	100%
	SEP. 2016	21	0.2	0.0	0.2	0.0	1.5	1.5	4.1	5.0	86%
	OCT. 2016	18	0.5	0.0	0.5	0.0	3.8	4.5	5.5	5.5	50%

TABLE 3a. Class Member Status at Western and Eastern State Hospital (Totals) – Jail-based Competency Evaluations

TOTALS BOTH HOSPITALS		Court Orders Signed	Days from order signature to:								Percent complete within 7 days of order
			hospital receipt of order		hospital receipt of discovery		end of month for incomplete referrals		completion		
			Average	Median	Average	Median	Average	Median	Average	Median	
Jail-based Evaluation	APR. 2015	214	2.1	0.0	3.5	1.0	17.8	10.0	20.3	14.0	12%
	MAY. 2015	217	2.1	0.0	3.2	1.0	22.1	13.0	18.2	12.0	14%
	JUN. 2015	250	2.3	1.0	3.6	1.0	20.8	13.0	24.1	17.0	9%
	JUL. 2015	281	2.0	0.0	3.3	1.0	17.9	11.0	26.5	19.0	5%
	AUG. 2015	217	2.0	0.0	3.0	1.0	19.7	13.0	25.4	21.0	6%
	SEP. 2015	253	1.8	0.0	2.5	1.0	16.0	9.0	22.9	18.0	9%
	OCT. 2015	246	1.9	0.0	2.5	1.0	16.6	11.0	19.2	16.0	17%
	NOV. 2015	196	1.8	0.0	2.8	1.0	21.6	17.0	20.5	16.0	23%
	DEC. 2015	243	1.6	0.0	2.1	0.0	16.2	10.0	20.4	15.0	11%
	JAN. 2016	227	1.8	0.0	2.5	0.0	12.2	6.0	19.0	13.0	23%
	FEB. 2016	243	0.7	0.0	0.8	0.0	7.4	5.0	11.0	8.0	42%
	MAR. 2016	285	0.9	0.0	0.9	0.0	8.2	6.0	9.7	7.0	51%
	APR. 2016	239	0.9	0.0	1.0	0.0	7.7	5.0	10.0	8.0	48%
	MAY. 2016	259	1.0	0.0	1.1	0.0	8.3	6.0	10.6	9.0	44%
JUN. 2016	278	1.1	0.0	1.2	0.0	9.5	7.0	11.4	9.0	26%	
Jail-based Evaluation - 14 day compliance			Average	Median	Average	Median	Average	Median	Average	Median	within 14 days
	JUL. 2016	274	0.9	0.0	1.0	0.0	9.2	6.0	12.9	10.0	44%
	AUG. 2016	295	0.8	0.0	0.9	0.0	7.2	6.0	13.4	12.0	49%
	SEP. 2016	308	0.7	0.0	1.0	0.0	7.3	7.0	12.9	12.0	47%
	OCT. 2016	276	0.7	0.0	1.0	0.0	8.5	7.0	13.4	13.0	50%

TABLE 3b. Class Member Status at Western and Eastern State Hospital (Totals) – Inpatient Competency Services

TOTALS BOTH HOSPITALS		Court Orders Signed	Days from order signature to:								Percent complete within 7 days of order
			hospital receipt of order		hospital receipt of discovery		end of month for incomplete referrals		completion		
			Average	Median	Average	Median	Average	Median	Average	Median	
Inpatient Evaluation	APR. 2015	19	7.8	1.0	11.0	3.0	39.9	33.0	45.1	48.5	9%
	MAY. 2015	15	7.3	1.0	9.7	3.0	55.3	47.0	50.9	25.0	5%
	JUN. 2015	14	5.9	1.0	8.0	3.0	65.0	54.0	44.4	18.0	15%
	JUL. 2015	17	5.7	1.0	7.8	3.0	49.9	15.0	14.8	15.0	20%
	AUG. 2015	20	6.9	1.0	8.4	2.0	33.0	17.0	53.9	29.0	5%
	SEP. 2015	20	4.3	1.0	5.7	1.0	39.4	22.0	20.4	20.0	10%
	OCT. 2015	25	2.4	1.0	4.3	1.0	27.6	19.0	30.8	24.0	0%
	NOV. 2015	17	2.0	1.0	3.9	1.0	30.8	18.0	26.4	22.0	5%
	DEC. 2015	23	3.3	1.0	4.1	1.0	17.8	14.0	47.5	29.0	6%
	JAN. 2016	20	4.8	1.0	6.6	1.0	27.0	23.0	33.7	29.0	0%
	FEB. 2016	18	7.7	1.0	9.0	1.0	24.5	12.0	30.6	22.0	5%
	MAR. 2016	23	6.7	1.0	6.9	1.0	12.6	9.0	26.6	16.0	8%
	APR. 2016	22	1.7	0.0	1.8	0.0	11.2	9.0	24.2	21.0	4%
	MAY. 2016	20	1.5	0.0	1.5	0.0	9.5	6.0	17.8	20.0	22%
	JUN. 2016	23	3.2	1.0	3.2	1.0	11.4	8.0	21.9	23.0	3%
	JUL. 2016	21	4.3	1.0	4.3	1.0	7.2	4.0	16.6	14.0	8%
	AUG. 2016	45	2.5	0.5	2.5	0.5	10.6	9.0	11.8	11.5	29%
	SEP. 2016	34	2.1	1.0	2.2	1.0	12.8	14.0	11.7	8.0	29%
OCT. 2016	34	1.2	0.0	1.3	0.0	15.6	17.0	17.7	21.0	22%	
Inpatient Restoration	APR. 2015	71	1.5	0.0	2.2	1.0	35.3	16.0	37.6	43.0	26%
	MAY. 2015	66	1.5	0.0	1.9	0.0	35.8	20.0	27.8	18.0	24%
	JUN. 2015	43	1.6	0.0	2.0	1.0	20.6	13.0	34.9	25.0	20%
	JUL. 2015	89	1.4	0.0	1.9	0.0	16.1	10.0	24.5	20.0	26%
	AUG. 2015	78	1.9	0.0	2.4	0.0	23.5	20.0	24.0	33.0	25%
	SEP. 2015	89	1.6	0.0	2.1	0.0	27.6	21.0	22.7	13.0	29%
	OCT. 2015	86	2.1	1.0	2.9	1.0	26.9	25.0	32.1	45.0	20%
	NOV. 2015	67	1.5	1.0	2.0	1.0	37.2	34.0	42.1	49.0	21%
	DEC. 2015	72	1.8	1.0	2.3	1.0	27.5	23.0	47.4	52.0	15%
	JAN. 2016	76	2.6	0.0	2.8	0.0	29.6	19.0	37.5	46.0	23%
	FEB. 2016	81	3.3	0.0	3.8	1.0	24.2	21.0	37.1	41.0	12%
	MAR. 2016	89	1.3	0.0	2.2	0.0	26.5	24.0	31.8	39	24%
	APR. 2016	76	1.7	0.0	2	0.0	22.9	22.0	35.5	41	10%
	MAY. 2016	88	1.7	0.0	1.9	0.0	22.1	20.0	25.2	19	31%
	JUN. 2016	89	1.2	0.0	1.3	0.0	21	15.0	23	14.5	13%
	JUL. 2016	79	1.6	0.0	1.8	0.0	11.4	6.0	20.4	13.0	19%
	AUG. 2016	100	1.4	0.0	1.6	0.0	12.6	13.0	11.8	11.5	28%
	SEP. 2016	124	1.4	0.0	1.5	0.0	14.0	10.0	14.3	12.0	22%
OCT. 2016	94	1.2	0.0	1.2	0.0	24.4	25.0	18.0	14.0	15%	

CLASS MEMBER STATUS DATA GRAPHS

NOTE: October data are “first look” and are subject to change.

FIGURE 1. Evaluation Orders

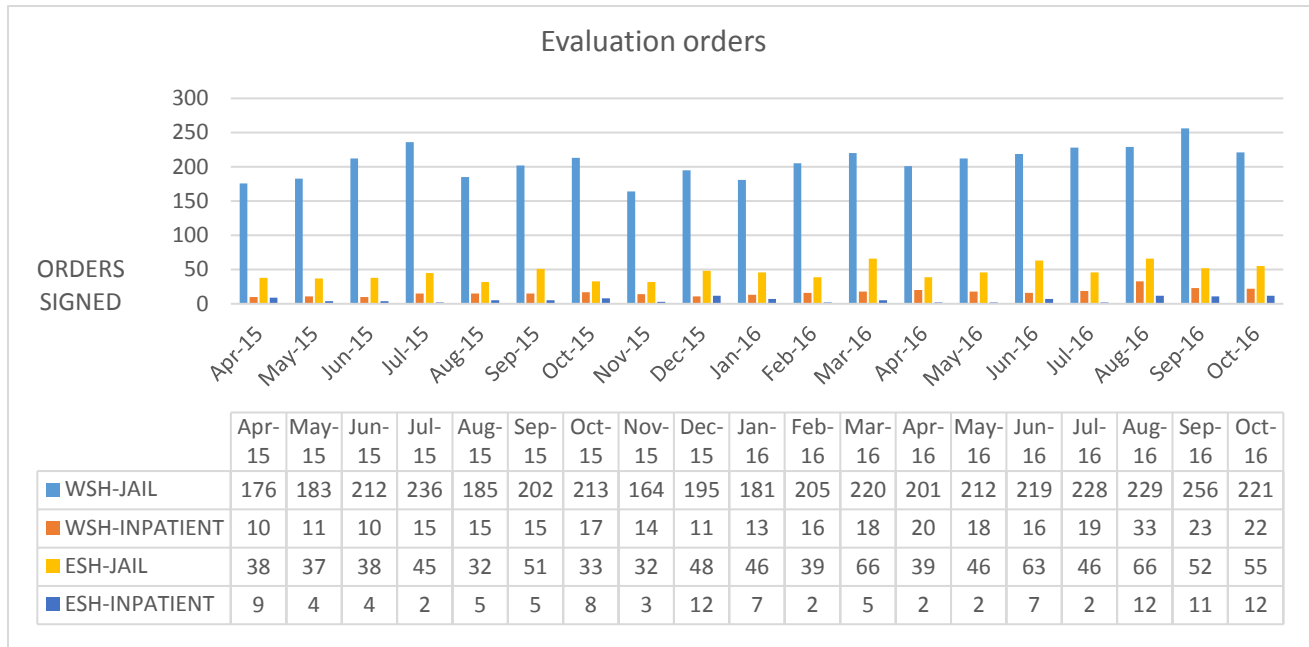


FIGURE 2. Restoration Orders

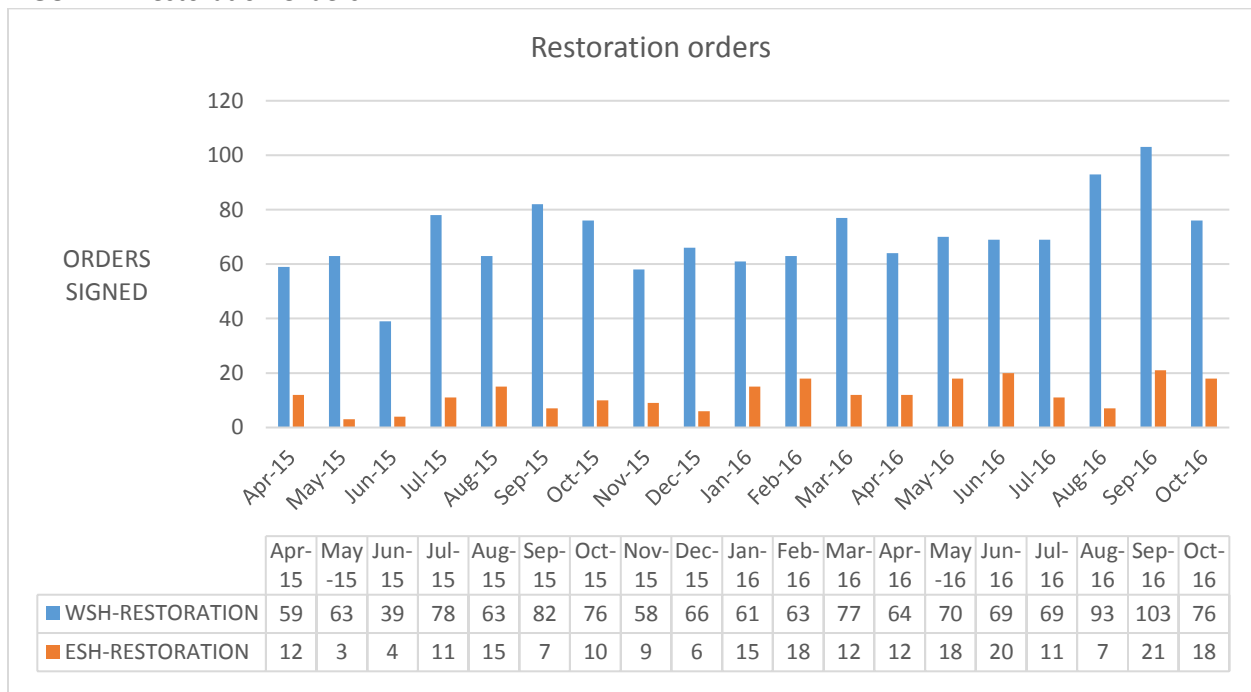


FIGURE 3. Evaluations – Median

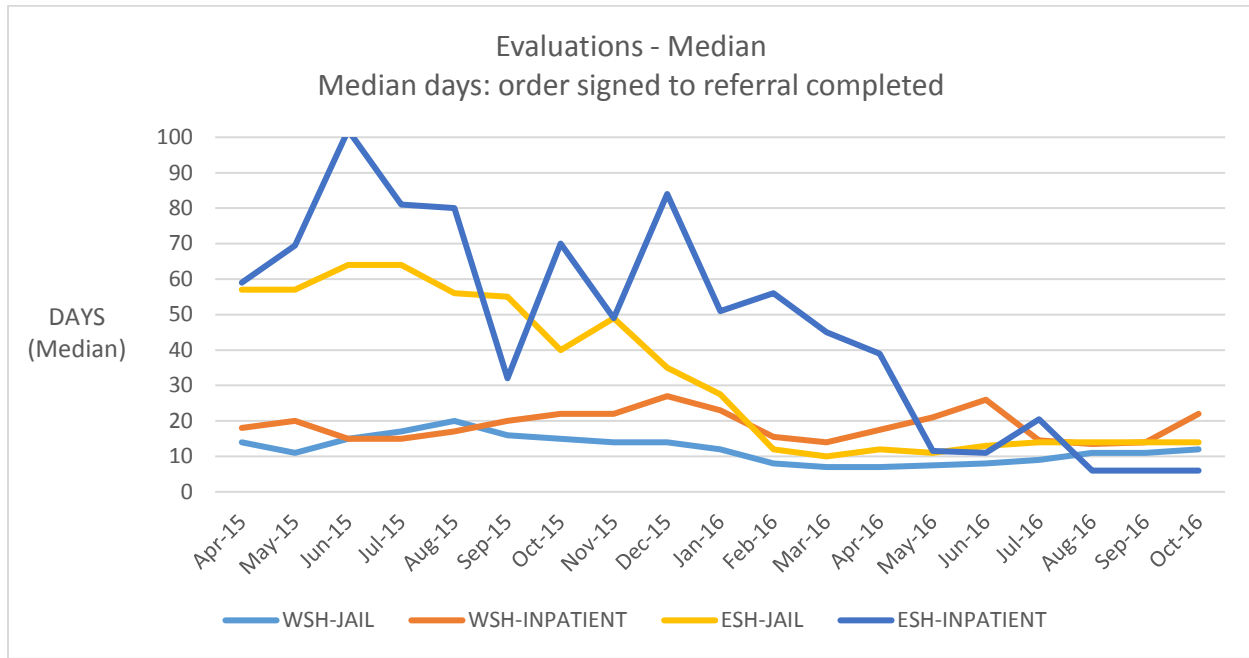


FIGURE 4. Evaluations – Average

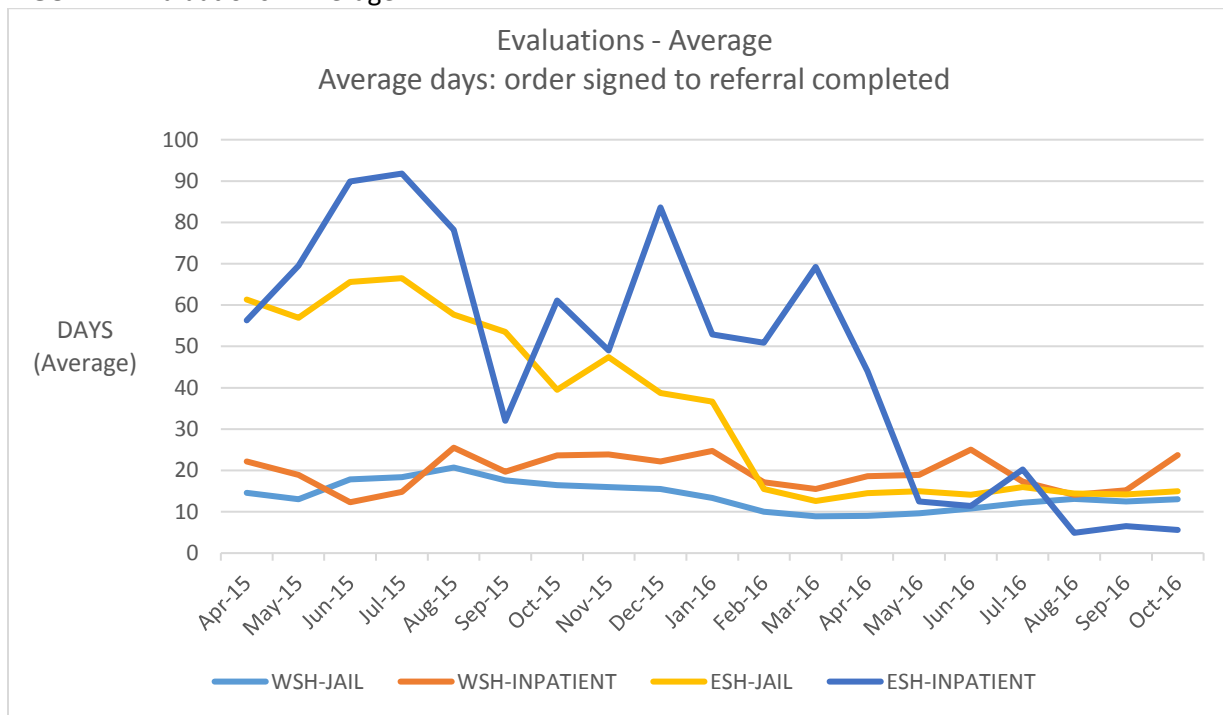


FIGURE 5. Restorations - Median

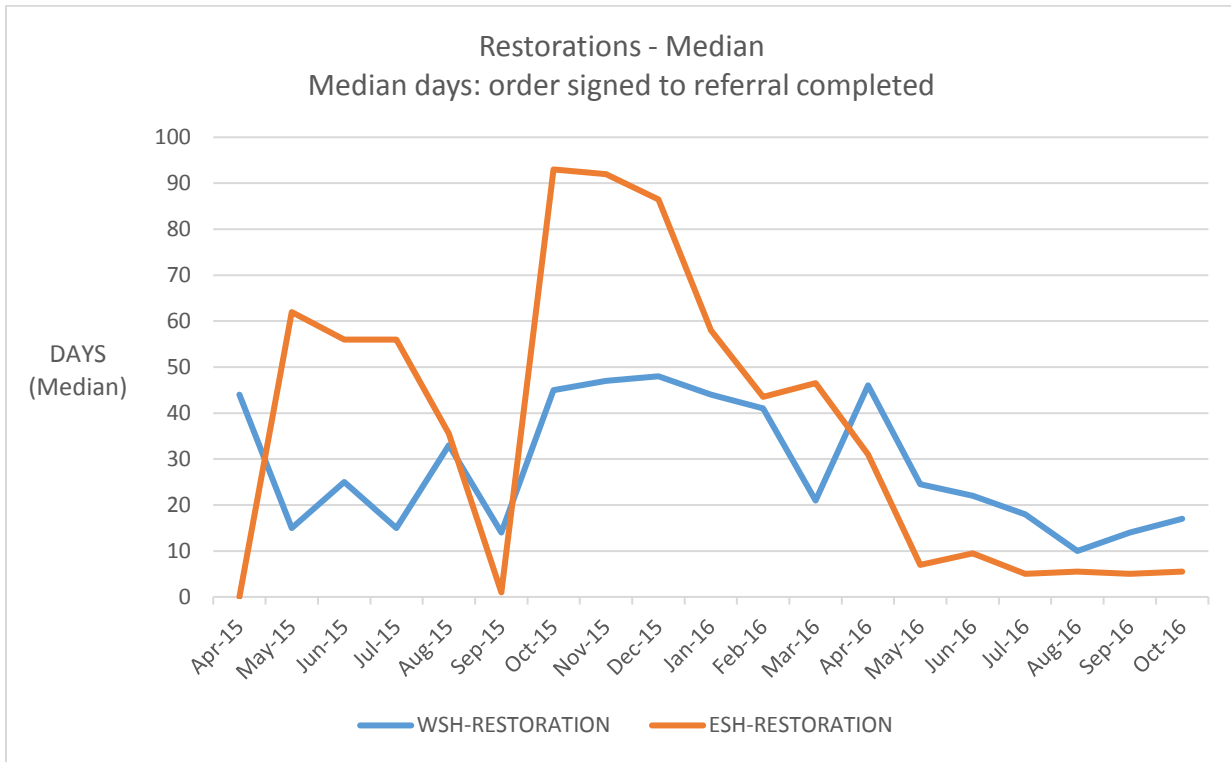
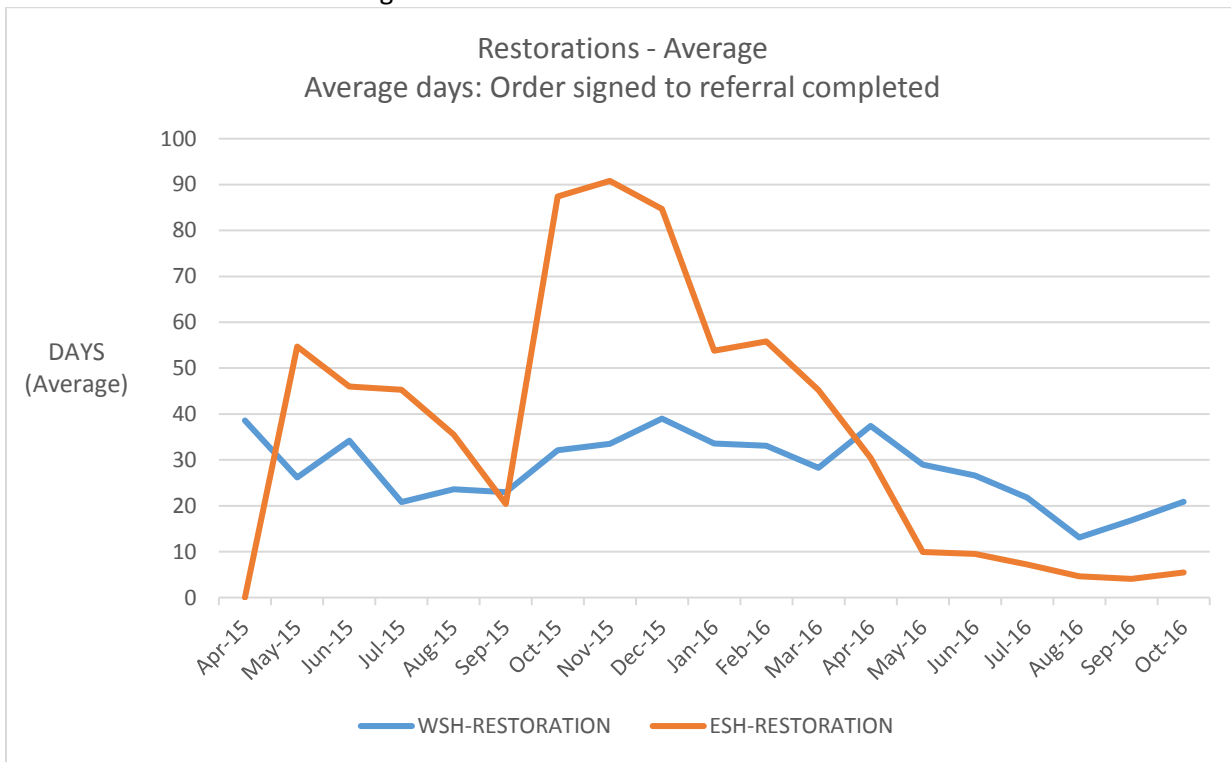


FIGURE 6. Restorations – Average



DSHS provided additional performance data to the court during the June 20-22, 2016 hearing. These data, including the October 2016 update to the data, are shown in Table 1 on page 5. **NOTE: These data (percent days or less) are based on the month that the court order was signed and will therefore be different from the data shown in Tables 1-3, which is based on the month the order packet was completed.** October numbers are first look, and percentages will increase as many cases (those with orders at the end of the month) will close within the fourteen day window.

TABLE 4. Summary of jail evaluations, in-patient evaluations, and restorations by month since February 2016.

TOTAL COMPLETED JAIL EVALUATIONS BY MONTH COURT SIGNED			
MONTH	14 DAYS OR LESS	TOTAL ORDERS SIGNED	PERCENT 14 DAYS OR LESS
Feb-16	196	244	80.3%
Mar-16	244	288	84.7%
Apr-16	202	239	84.5%
May-16	209	259	80.7%
Jun-16	189	282	67.0%
Jul-16	195	273	71.4%
Aug-16	205	297	69.0%
Sep-16	200	277	72.2%
Oct-16	138	276	50.0%
TOTAL ADMITTED INPATIENT EVALUATIONS BY MONTH OF ORDER SIGNED			
MONTH	7 DAYS OR LESS	TOTAL ORDERS SIGNED	PERCENT 7 DAYS OR LESS
Feb-16	1	19	5.3%
Mar-16	2	30	6.7%
Apr-16	3	22	13.6%
May-16	4	22	18.2%
Jun-16	0	25	0.0%
Jul-16	4	20	20.0%
Aug-16	17	44	38.6%
Sep-16	12	34	35.3%
Oct-16	11	34	32.4%
TOTAL ADMITTED RESTORATIONS BY MONTH COURT ORDER SIGNED			
MONTH	7 DAYS OR LESS	TOTAL ORDERS SIGNED	PERCENT 7 DAYS OR LESS
Feb-16	7	78	9.0%
Mar-16	20	98	20.4%
Apr-16	12	76	15.8%
May-16	24	84	28.6%
Jun-16	22	90	24.4%
Jul-16	28	78	35.9%
Aug-16	34	102	33.3%
Sep-16	39	124	31.5%
Oct-16	21	94	22.3%

RESOURCES REQUIRED TO PROVIDE TIMELY COMPETENCY SERVICES

Need Projections and Bed Capacity

The investment made by the Legislature in the 15-17 biennial budget, and the short and long-term strategies that are being undertaken, will enable Washington to provide competency services in accordance with the established time limits. Washington is making every effort to provide competency services within the seven-day and fourteen-day standards as soon as it is possible.

Compliance projections were initially based on the estimates and data included in previous monthly reports, the Long Term Plan dated July 2015, and the May 2016 revised Long Term Plan. An updated projection model has been developed and preliminary results were submitted to Dr. Danna Mauch on July 29, 2016. Improvements to this model are underway and include:

1. Utilization of more historical data - 12 months (vs. 6 months) of daily historical data (August 2015 – July 2016);
2. Employed statistical models that allow for dynamic interactions among the factors in projections;
3. Incorporated growth demand for new orders into the model that were represented by
 - (a) Mental health prevalence estimate among WA's projected arrest population, and
 - (b) An 8% annual increase in new orders
4. Accounted for seasonality in the model.

OFMHS plans to submit an additional draft of the model as it is refined and ultimately finalized.

OFMHS hired 4 inpatient forensic evaluators at WSH in the month of October while continuing to interview for 2 inpatient evaluators at ESH, 1 outstation evaluator for Yakima County, 1 outstation evaluator for Thurston County, and 2 supervisor positions. A tentative offer was made to a forensic evaluator supervisor in the month of October. The weekend and extended hours position at the Northern Regional Office was also filled in the month of October. OFMHS also established a support position at WSH for evaluators and other stakeholders with recruitment beginning in November.

TRUEBLOOD KEY ACCOMPLISHMENTS – OCTOBER 2016

RECRUITMENT

- A strategy for recruiting physicians and psychiatrists is currently being completed by Talent Acquisition at headquarters. The strategy was discussed by WSH CEO Cheryl Strange, Assistance HR Director Wendy Long and Senior Lead Recruiter Ted Koska on October 31. A DRAFT strategy document is being prepared by Ted Koska.
- Recruitment continues at Maple Lane for Residential Rehab Counselor and Security Guard positions vacated by natural attrition.
- The recruitment effort for forensic psychologists and forensic psychologist supervisors is nearing completion at the OFMHS. Interviewing of quality candidates will continue until all positions are filled.
- The Talent Acquisition team has recruited 1420 vetted candidates to fill 178 positions at WSH by November 15. With the exception of psychiatrists and physicians, DSHS has more than enough candidates to fill all vacant positions. Related updates include:
 - The majority of these candidates (over 90%) have come from outside DSHS.
 - The recruitment team at headquarters has continued aggressive outreach to potential candidates throughout the month of October.

- Advertising continues for these positions through November 2016.
- The recruitment team at headquarters has continued aggressive outreach to potential candidates throughout the month of September. With continuous movement of hospital personnel, it is obvious that staffing at WSH will always be a full-time endeavor.
- Advertising continues for transitioning military candidates through October 2016.

RESIDENTIAL TREATMENT FACILITIES

- As of October 31, the census at the Yakima Competency Restoration Program was 20, and they had admitted a total of 70 patients since opening. Of these, 32 completed the program and were determined competent, 8 were determined not likely restorable, 8 were recommended for an additional period of restoration, 4 were transferred to the state hospital. Twenty two patients have been recommended for early evaluation.
- As of October 31, the census at the Maple Lane Competency Restoration Program was 25, and they had admitted a total of 101 patients since opening. Of these, 43 completed the program and were determined competent, 10 were determined not likely restorable, 6 were recommended for an additional period of restoration, 6 were transferred to the state hospital. Twenty one patients have been recommended for early evaluation.
- DSHS initially developed two primary pathways to refer a patient to an alternate site. One of these pathways includes identifying and screening patients from the WSH waitlist, and referring appropriate cases to the alternate sites. To date, this pathway has been able to achieve approximately 90% occupancy at the alternate sites. The other pathway includes considering current patients within the competency restoration wards at the two state hospitals. OFMHS is working with WSH to implement a routine procedure to identify restoration patients at WSH who are appropriate for transfer to the RTFs. Our DSHS Central Admissions Coordinator and OFMHS Quality Manager are scheduled to meet with the WSH doctors on November 18th to review this procedure, and the role of the ward doctors in this process.

MOBILE TECHNOLOGY SOLUTIONS FOR EVALUTORS

- The use of VPN (Virtual Private Network) by the evaluators as they travel has been very positively received. Reports from the field confirm that it is a much more efficient method for submitting and reviewing dictation, editing their work, and that it reduces the turn-around time.
- Microphones for Dragon have been procured and deployed.

TRUEBLOOD IMPLEMENTATION STEPS TAKEN AND PLANNED—JULY 2016

Task	Key Milestones	Status / End Dates	Anticipated Outcome & Assumptions	Results Achieved & Barriers to Completion
Court Appointed Monitor Coordination				
Monthly Reports	Release 10/15 report	Complete	<ul style="list-style-type: none"> Maintain compliance with the Court. Use data to review and improve the provision of forensic services. 	<ul style="list-style-type: none"> Released October 15 report to Stakeholders following review of Court Monitor. DSHS sent a memo to Dr. Mauch requesting a new report follow up process. Dr. Mauch has responded and approves of the process.
	Submit 11/15 Report	11/15/2016		
Legislative Coordination				
Implement Engrossed Substitute Senate Bill (ESSB) 6656: Funding applications	Apply for funding from the Office of Financial Management (OFM) from the Governor's Behavioral Health Innovation Fund relating to the state hospitals' forensic systems.	Passed legislature. Expires on July 1, 2019 per Section 14.	<ul style="list-style-type: none"> Section 5(2) requires OFM to contract with an external consultant to examine the current configuration and financing of the state hospital system and make recommendations on a number of different areas, including identification of the potential costs, benefits, and impacts associated with dividing one or both of the state hospitals into discrete hospitals to serve civil and forensic patients in separate facilities. The consultants' report is due to the Governor and Legislature by Oct. 1, 2016. Section 5(3) requires DSHS to contract for the services of an academic or independent state hospital psychiatric clinical care model consultant to examine the clinical role of staffing at the state 	<ul style="list-style-type: none"> The Select Committee for Quality Improvement in State Hospitals met on Oct. 27, 2016, to discuss hospital financing, the WSH Systems Improvement Agreement and root cause analysis, and DSHS and state hospital performance measures. Meeting materials are available at: http://www.governor.wa.gov/issues/issues/health-care-human-services/select-committee-quality-improvement-instate-hospitals DSHS contracted with OTB Solutions Group to provide consulting services to examine the clinical role of staffing within the two adult state psychiatric hospitals. OTB will present its recommendations to the Select Committee in November 2016. OFM contracted with Public Consulting Group (PCG) to provide the information requested in section 5 of ESSB 6656. PCG will present its recommendations to the Select Committee in November 2016.

Task	Key Milestones	Status / End Dates	Anticipated Outcome & Assumptions	Results Achieved & Barriers to Completion
			<p>hospitals. The consultants' report is due to the Governor and Legislature by Oct. 1, 2016.</p> <ul style="list-style-type: none"> Section 6 creates the Governor's Behavioral Health Innovation Fund in the state treasury. Only the director of financial management or designee may authorize expenditures from that Fund, which are provided solely to improve quality of care, patient outcomes, patient and staff safety, and the efficiency of operations at the state hospitals. 	<p>Jail Diversion Consultant: The Governor's Office executed a contract with Joplin consulting to examine how to best divert persons with mental illness from the criminal justice system and identify appropriate funding mechanisms. Joplin consulting started the process of interviewing key stakeholders and sending out a survey during the month of August. On 8/26, Dr. Kinlen and the Liaison participated in a conference call with Lore Joplin. Two additional meetings occurred with the last meeting with the consultants held on October 21, 2016. DSHS reviewed current diversion efforts by OFMHS and provided recommendations to the consultant group for next steps. The final recommendations report is due 12/1/16.</p>
<p>Consult with DOH about draft legislation requiring DOH certification of forensic evaluators to determine the need for a sunrise review</p>	<p>Consult DOH</p>	<p>Ongoing</p>	<ul style="list-style-type: none"> Expanded pool of forensic evaluators would help improve timeliness. Licensure would provide quality assurance and create professional standards for forensic evaluators. Develop long-term certification of forensic evaluators, consistent with the Trueblood Court Monitor's recommendations on mid- and long-term performance to implement a forensic certification program to sustain performance. 	<ul style="list-style-type: none"> The DSHS/OFMHS forensic evaluation training and certification workgroup has proposed a plan to standardize training of forensic evaluators and to develop a certification program. The initial phase of the certification program will be to develop and evaluate a training/certification program for current state employees to inform state-wide implementation. Funding options/budget analysis are currently being evaluated in addition to examining the role of Labor in this process and reaching out to key stakeholders. A state-wide certification program will require legislation. DSHS will continue to work with DOH regarding the next steps in considering evaluator certification. DOH has suggested that a

Task	Key Milestones	Status / End Dates	Anticipated Outcome & Assumptions	Results Achieved & Barriers to Completion
				sunrise review be conducted which requires a formal legislative request and additional DOH review.
Labor Coordination				
Engage Labor Leaders and Members	Conduct ongoing bi-monthly meetings with Labor leaders	Ongoing	<ul style="list-style-type: none"> • Discuss policy, budget and operational changes likely required to comply with the Trueblood requirements. • Obtain staff necessary to safely support operation of additional forensic and civil beds at the state hospitals. • Obtain necessary psychiatrists and physicians to supplement services proved by employees at Western State Hospital to safely support the operation of additional forensic and civil beds. 	<ul style="list-style-type: none"> • All contract negotiations were completed and the contracts were ratified by their perspective members prior to midnight on October 1st. It is important to note that all of the contracts are subject to legislative approval.
Data Collection and Fiscal Modeling				

Task	Key Milestones	Status / End Dates	Anticipated Outcome & Assumptions	Results Achieved & Barriers to Completion
Monthly report data collection	Identify and obtain needed data	Ongoing	<ul style="list-style-type: none"> Obtain data for monthly reports and develop standardized reports to inform policy development and implementation. 	Data collection is ongoing.
Institute data audit process	Review data and files of cases with anomalies and identify trends	Ongoing	<ul style="list-style-type: none"> Ensure completeness and accuracy of wait list data. 	Data validation process is ongoing.
Hire Data Architect Position	Recruit, hire and onboard	On hold	<ul style="list-style-type: none"> Build a technology solution to establish a common platform to transmit data between the State Hospitals and over 240 different jurisdictions to improve timeliness. Provide hands-on partner training across the system. 	Assigned Lead Developer and recruited for another Lead Developer. Several applicants will be interviewed, beginning 11/14/16. Interviews were conducted and an offer was made on the Web Developer position – awaiting response.
Forensic Data System Design/ Development	Build data models	Use case Architecture complete.	<ul style="list-style-type: none"> Integrated Forensic System with consistent data entry and tracking of all class members from creation of court order for mental competency evaluation through completion of evaluation and / or restoration (whichever is later). Provide capability for access by evaluators to discovery documents and any status changes, regardless of location, to reduce delays. Provide platform for quality reporting from single system, eliminating the 	<ul style="list-style-type: none"> Centralized Admission Desk Process completed. Diversion workflow completed. Residential Treatment Facility (RTF) workflow completed. DSHS Portfolio Assessment (risk and oversight) completed as a Risk Level 2 by Enterprise Technology and the OCIO standard. Meeting scheduled to review with OCIO consultants (required per legislation). Offer extended to Web Developer candidate. Interviews pending for Web Developer. In house Lead Developer assigned and quickly up to speed.
	Finalized Gaps analysis	Complete		
	Finalized task list and timeline	Plan revised and updated through Design Components		

Task	Key Milestones	Status / End Dates	Anticipated Outcome & Assumptions	Results Achieved & Barriers to Completion
	Establish Project Governance charter	Complete	variability currently inherent in leveraging legacy applications not meant for this purpose.	
Human Resources				
Hire Office of Forensic Services HQ positions	Hire and Onboard	Complete	Provide infrastructure for forensic services system and improve effective and timely provision of competency services.	There are no vacancies in OFMHS HQ.
Hire additional hospital ward staff	Conduct targeted hiring events	In progress	Obtain required staff of all classes to safely and appropriately operate additional civil and forensic beds and to meet data collection, analysis and reporting needs.	<ul style="list-style-type: none"> • While recruitment efforts are progressing well for most positions at WSH (and BHA), we continue to struggle with physician and psychiatrist recruitment. Discussion is underway regarding bringing a private physician recruitment firm on board to assist. • Nurse recruitment is going well - a recent hiring event was able to be cancelled due to positive recruitment numbers.
	Pursue contracting			
Competency Evaluation				
Hire two new Forensic Services Supervisors	Complete PDs	Completed	<ul style="list-style-type: none"> • Will provide needed additional supervisors of Forensic Evaluator staff; leading to improved effectiveness and efficiency of evaluators. 	<ul style="list-style-type: none"> • Interviews started in August and are hoping to have positions offered by the end of October or early November. One tentative offer has been made to a forensic evaluator supervisor and additional interviews are being scheduled in November to fill the remaining two positions. A third supervisor position was approved and is also being recruited.
	Recruit	In progress		
	Hire	TBD		

Task	Key Milestones	Status / End Dates	Anticipated Outcome & Assumptions	Results Achieved & Barriers to Completion
Build capacity for out-station sites	Site agreements	N/A	<ul style="list-style-type: none"> Increased capacity at out-station sites will reduce wait time for evaluation. 	<ul style="list-style-type: none"> The Tri-Cities outstation is operational. Discussions regarding need for additional sites continue with a focus in Yakima and Thurston counties.
	Out-station sites operational	Completed		
Coordinate with forensic mental health system partners	Present at the Washington Association of Sheriffs and Police Chiefs (WASPC) annual conference	Ongoing	<ul style="list-style-type: none"> Conversations with select jails close to hospitals or already designated for outstation sites are focused on creating space for evaluations on a regularly scheduled basis and ability to transport to state hospital. Secondly to discuss with local defenders associations regarding predictable availability to attend with clients; courts for coordination of timely transmittal of orders and documents; and local mental health agencies for additional supports and perhaps space where that is identified as a challenge. Presentations at the WASPC conference will provide opportunity to inform about impacts of Trueblood decision and make connections with members for future planning to facilitate transfer and access to reduce wait times and provide competency services. 	<ul style="list-style-type: none"> Three of the four prosecutorial diversion programs have formally begun accepting referrals. The quarterly meeting has been scheduled for November 22. Liaison attended the 10/3 Law and Justice Committee meeting on jail standards Currently there are no statewide jail standards OFHMS has an interest in the standardization of jail policies and procedures at a statewide level DBHR was informed of the current triage process, the plan for the future triage process, and diversion programs at the 10/6 All Staff meeting Office of Forensic Mental Health Services Director and Liaison Specialist are participating as members of the WINGS Public Guardianship Steering Committee with the Administrative Office of the Courts (AOC) to explore the possibility of utilizing public guardianship and other less restrictive options to the benefit of the forensic population. Liaison participated on call on 10/24 and is working with Aging and Long Term Support Administration and the Research and Development Administration to obtain current data on populations best served by

Task	Key Milestones	Status / End Dates	Anticipated Outcome & Assumptions	Results Achieved & Barriers to Completion
				<p>guardianships. (Future teleconferences scheduled on 11/26).</p> <ul style="list-style-type: none"> • Liaison participates in an Outreach and Re-Entry Committee lead by the Health Care Authority (HCA), which is exploring diversion options for individuals with behavioral health issues involved in the forensic system. HCA is soliciting input from other agencies for ideas on pilot programming. The OFMHS and HCA met 10/12 to discuss any potential duplication and if possible, any collaborative possibilities. It was decided that OFMHS work with HCA/DBHR and the Accountable Communities of Health (ACHs) in BHO regions to better understand diversion efforts by the MCOs. • DSHS, in collaboration with partners, launched a pilot coordinated evaluation calendar (PCEC) in King County Superior Court on May 31, 2016. PCEC has scheduled four additional individuals since the 7/28 check-in meeting, making the total served 17. It was determined that there has been some benefit to real-time scheduling of evaluations at the time of the hearing. There have been some barriers identified during the pilot, mainly the waitlist and technical issues. At the October 11 check-in meeting there was a suggestion by King County to continue the pilot until the end of the year and spend this time planning a more efficient and effective process. Dr. Kinlen supported this recommendation. • Liaison reached out to Clallam County to schedule a community meeting. Due to scheduling conflicts

Task	Key Milestones	Status / End Dates	Anticipated Outcome & Assumptions	Results Achieved & Barriers to Completion
				<p>with Clallam County stakeholders, the meeting will not take place until February 15, 2017.</p> <ul style="list-style-type: none"> • The Governor’s Office has contracted the services of Joplin Consulting to perform an assessment of jail diversion options throughout the state. OFMHS is working very closely with the consultants to keep them abreast of court mandates and plans currently in progress. Liaison and Dr. Kinlen met with the consultants on October 21 to discuss OFHMS jail diversion strategies, such as diversion projects and the comprehensive triage planning process. • OFMHS is working in collaboration with plaintiffs, AGs, and Court Monitor on the Diversion RFP Plan. • On 10/24, OFMHS and BHA leg staff met with Tom McBride from the Washington Association of Prosecuting Attorneys, to discuss diversion and the upcoming legislative session. • OFMHS reached out to Pierce County presiding judge, counsel, sheriff, and executive office on 9/19 regarding the use of the incorrect court order, as well as the county not transporting defendants to the alternate restoration sites. Several OFMHS staff members met with Pierce County on October 31. While there was no resolution around Pierce County’s transportation issues out of county, they agreed to review their court order and requested quarterly collaboration meetings.
Continue current county-conducted evaluation system until 2018	Establish quality criteria for evaluation reports	Ongoing	Obtain data needed from counties in order to meet court ordered reporting requirements.	The OFMHS quality management team has initiated reviews of forensic evaluation reports from 10.77 ordered evaluations. The team has developed a

Task	Key Milestones	Status / End Dates	Anticipated Outcome & Assumptions	Results Achieved & Barriers to Completion
				checklist for evaluating forensic evaluation reports. The initial roll out date is scheduled for November.
Test and Distribute Mobile Equipment	Test a remote access system	Complete	<ul style="list-style-type: none"> • Provide out-stationed evaluators with the capacity to access DSHS systems and electronic health records remotely. • Support more rapid entry of evaluation information and reduce duplicate data entry. 	<ul style="list-style-type: none"> • All planned mobile equipment has been deployed to the evaluators. Very positive results noted by participating evaluators.
	Pilot a remote access system to be used in the field	Complete		
	Expand Pilot to all Evaluators	Complete		
Explore and pursue triage system possibilities	Roll out Phase II	In progress	Establish an efficient evaluation to identify individuals who: need inpatient services due to serious mental health condition; clearly do not require inpatient evaluation services; or are clearly competent due to changes in their condition since the issuance of an order for evaluation (such as no longer drug affected).	<ul style="list-style-type: none"> • DSHS sent a letter to Dr. Mauch on 8/3 requesting assistance and consultation related to the development and implementation of a robust triage plan. DSHS submitted a follow up request for response via email on 9/1. Dr. Mauch submitted recommendations on 9/3. • DSHS provided three webinars to stakeholders related to the Triage Consultation and Expedited Admissions (8/10, 8/15, 8/25). Notice of webinars were distributed through the WAPA, WACDL, WDA, and WASPC listserv, as well as contacts lists provided by plaintiffs’ counsel. There were 32 attendees; this number includes several attendees within an office. We will continue to report on progress made with counties based on feedback received. Liaison continues to provide consultation and webinars to entities and individuals who were not able to attend the webinars.

Task	Key Milestones	Status / End Dates	Anticipated Outcome & Assumptions	Results Achieved & Barriers to Completion
				<ul style="list-style-type: none"> • On 9/9, OFMHS and the hospitals convened to discuss gaps in the current triage process and next steps of Phase II. It was decided to continue the current process, while pulling together a team of subject matter experts both at the hospital and stakeholder level to develop a comprehensive triage plan. Triage Planning and Implementation Team meetings occurred 10/4, 10/17, and 10/26 Workgroup input will be incorporated into the Planning document to be submitted to the plaintiffs and Court Monitor in November. • OHFMS has reached out and had calls with several triage experts: Edwina Davis from Bluegrass Resource Center (10/13) and Dr. Ed Roskes, Director of Forensic Services MD Department of Health and Mental Hygiene. (10/28) • As of 10/31/2016, DSHS has received twenty-nine triage referrals from jail staff and approved twenty-two. Two referrals were admitted to WSH prior to completion of the triage process, one did not have an order for restoration at the time of referral, and one was rejected. • On November 1, OFMHS will begin to call jails when records indicate that there is an in-custody defendant who has been awaiting 14 days for a competency evaluation. The purpose of the communication is to notify jail staff of the Triage Consultation and Expedited Admissions (TCEA) process.
Competency Restoration				

Task	Key Milestones	Status / End Dates	Anticipated Outcome & Assumptions	Results Achieved & Barriers to Completion
WSH; E2 and F3 Wards: add 30 beds	Bed Occupancy	TBD	Serves overall plan to add 90 beds and expand State Hospital bed capacity to meet Court ordered compliance date.	Due to DSHS plans to meet the requirements set out by CMS, plans to open F3 have been postponed.
Provide Restoration Treatment at the Maple Lane Competency Restoration Program	Open Maple Lane facility	Complete	<ul style="list-style-type: none"> Identify alternate facility capacity to meet <i>Trueblood</i> compliance. Any competency restoration treatment program at Maple Lane is anticipated to transfer to operation at a State Hospital before DOC would be housing inmates on that campus. 	As of October 31, the census at the Maple Lane Competency Restoration Program was 25, and they had admitted a total of 101 patients since opening. Of these, 43 completed the program and were determined competent, 10 were determined not likely restorable, 6 were recommended for an additional period of restoration, 6 were transferred to the state hospital. Twenty one patients have been recommended for early evaluation.
	Restore patients to competency	Ongoing		
Provide Restoration Treatment at the Yakima Competency Restoration Program.	Open Yakima facility	Complete	<ul style="list-style-type: none"> Anticipated duration of one year and possible one year extension. Identify alternate facility capacity to support timely competency services that will meet the <i>Trueblood</i> compliance deadline of 05/27/16. 	As of October 31, the census at the Yakima Competency Restoration Program was 20, and they had admitted a total of 70 patients since opening. Of these, 32 completed the program and were determined competent, 8 were determined not likely restorable, 8 were recommended for an additional period of restoration, 4 were transferred to the state hospital. Twenty two patients have been recommended for early evaluations.
	Restore patients to competency	Ongoing		

Task	Key Milestones	Status / End Dates	Anticipated Outcome & Assumptions	Results Achieved & Barriers to Completion
County transport of patients	Coordinate with counties to develop transport protocols	Ongoing	Ensure timely transport of patients to support delivery of competency services as directed in court order.	<ul style="list-style-type: none"> • We continue to work with counties on transporting patients to the alternate sites. • A letter to the courts, attorneys and jails is in use informing parties that an available bed has been identified at an RTF and offering that bed to a defendant. The letter requests that the parties submit an amended court order that complies with state law.
Diversion Alternatives				
Implement 2E2SSB 5177 (2015) provisions for dismissal of charges & referral to treatment	Diversion Programs are Operational	Ongoing	Prosecutor can dismiss criminal charges without prejudice & refer to community-based mental health services.	DSHS has received fully executed contracts from all four contractors in May 2016. The prosecutorial diversion contracts require quarterly participation in meetings convened by DSHS to discuss the progress of projects, troubleshoot barriers, and share resources and ideas. Quarterly update will be available in November.

Task	Key Milestones	Status / End Dates	Anticipated Outcome & Assumptions	Results Achieved & Barriers to Completion
Increase diversion opportunities	Governor's Office to contract with diversion consultant	In Process	Hire a consultant to identify how to best divert persons with mental illness from the criminal justice system and identify appropriate funding mechanisms with appropriate stakeholders.	<ul style="list-style-type: none"> • A contract with a Diversion Consultant has been executed. OFMHS has had several phone conferences with the consultants and met with them on 10/21. • DSHS is participating in an HCA/DOC/DSHS Re-entry Workgroup to discuss service options for individuals transitioning from jail to the community.

FEBRUARY 8, 2016 COURT ORDER STATUS REPORT/UPDATES

The status updates to the February 8, 2016 Court Order are shown below.

NOTE: This tracker does not include all items previously reported as complete.

1. Implement a triage system to sort class members waiting for in-jail evaluations by the acuity of their mental illnesses and their current manifestations, by the seriousness of their crimes, and by the amount of resources their cases require, by:			
Requirements	Date	Status	Progress Notes
A. Producing a triage plan for review and comment	March 1, 2016	Complete	Complete
B. Putting the triage plan into effect, after accounting for the comments received	March 15, 2016	Complete	Complete
C. Reporting on the implementation and effectiveness of the triage plan in Defendants' monthly reports to the Court Monitor	Beginning April 15, 2016, ongoing	Ongoing	See 3c below and review task progress in "explore and pursue triage system possibilities."
2. Eliminate the backlog of class members currently waiting for in-jail evaluations by:			
A. Formally notifying DSHS's forensic evaluators and Pierce County's panel evaluators of plan to eliminate the backlog of people waiting for in-jail evaluations and requesting their help in doing so, and providing plans to get evaluations done through the use of extra duty pay and other methods available	February 15, 2016	Complete	Complete
B. Preparing a list of all backlog cases, organized by jail and by county	March 1, 2016	Complete	Complete
C. Finalizing recruitment of evaluators to aid in the backlog elimination effort and setting a schedule for the evaluation of each backlog case	March 1, 2016	Complete	Complete

D. Initiating the backlog elimination effort	March 7, 2016	Complete	Complete
E. Completing evaluations for all backlog cases (any patient waiting more than seven days at the end of the month).	April 15, 2016, Ongoing	Ongoing	Of the 276 jail evaluation orders signed in October, 138 were completed within 14 days which is 50%
3. Implement a triage system to sort class members waiting for in-hospital evaluations by the acuity of their mental illnesses and their current manifestations, by the seriousness of their crimes, and by the amount of resources their cases require, by:			
C. Reporting on the implementation and effectiveness of the triage plan in Defendants' monthly reports to the Court Monitor	Beginning April 15, 2016, ongoing	Ongoing	As of 10/31/2016, DSHS has received twenty-nine triage referrals – 10 from Thurston, 6 from Snohomish, 2 from Island, 3 from Clark, 2 from Kitsap, and 6 from King. Twenty-two were approved. Two referrals were admitted to WSH prior to completion of the triage process, one did not have an order for restoration at the time of referral, and four were rejected. On average, it takes 8 days for an individual to be expedited through the triage system. Much of this time is spent on pre-admission Sell hearing scheduling. The turnaround time for material review from both the triage consultant and the Chief Medical Officer has been quick -within 3 days. Additional information and updates on the triage system may be found in the “explore and pursue triage system possibilities” task in the Trueblood Implementation Steps matrix above.
4. Implement a triage system to sort class members waiting for restoration services by the acuity of their mental illnesses and their current manifestations, by the seriousness of their crimes, and by the amount of resources their cases require, by:			
C. Reporting on the implementation and effectiveness of the triage plan in Defendants' monthly reports to the Court Monitor	Beginning April 15, 2016	Complete	As of 10/31/2016, DSHS has received twenty-nine triage referrals – 10 from Thurston, 6 from Snohomish, 2 from Island, 3 from Clark, 2 from Kitsap, and 6 from King. Twenty-two were approved. Two referrals were admitted to WSH prior to completion of the triage process, one did not have an order for restoration at the time of referral, and four were rejected. On average, it takes 8 days for an individual to be expedited through the triage system. Much of this time is spent on pre-admission Sell hearing scheduling. The turnaround time for material review from

			both the triage consultant and the Chief Medical Officer has been quick -within 3 days. Additional information and updates on the triage system may be found in the “explore and pursue triage system possibilities” task in the Trueblood Implementation Steps matrix above.
5. Report on the implementation status of the CMS Plan of Correction by:			
B. Reporting on the implementation status in Defendants’ monthly reports to the Court Monitor	Beginning March 15, 2016, ongoing	Ongoing	On June 2, 2016, DSHS finalized negotiations with CMS to enter into a 13 month Systems Improvement Agreement (SIA) to allow Western State Hospital (WSH) the time and guidance needed to fix systemic operating problems and put more focus on patient treatment and overall safety. Signing the SIA rescinds the termination of CMS’s Medicare Provider Agreement with WSH, but allows CMS to reissue termination if it finds that the hospital is not progressing toward full compliance with the Medicare Conditions of Participation (CoPs), a requirement for federal funding. The Department does not anticipate expansion of bed capacity at WSH to be implemented during the 13 month SIA.
6. Plan for recruiting and staffing 30 beds at WSH after compliance with CMS’s terms of participation is achieved in March by:			
C. Reporting on the implementation status of the plan and timeframe in Defendants’ monthly reports to the Court Monitor	Beginning April 15, 2016, ongoing	Ongoing	DSHS has taken the actions necessary to support the transition of restoration beds back to the state hospitals by July of 2017. Next steps towards this effort will begin in January 2017.
8. Remove barriers to the expenditure of the \$4.8 million in currently allocated diversion funds by:			
D. Executing contracts for implementation by the selected providers	April 15, 2016	Complete	DSHS will issue a supplemental budget request in October to release the unused federal funds as state funds. This will allow DSHS greater flexibility in funding diversion projects. As a next step, the Governor will review all state agency budget requests and develop his budget proposal to the Legislature. The Legislature will then build and pass a budget. We will have to wait until the next budget is passed to know whether the funding is provided. The Legislative session begins in January 2017.
10. Develop a reliable and valid client-level data system to support better management and accountability of the forensic services system by:			

E. Implementing revisions to the existing system or initiating development of a new forensic data and management information system	May 27, 2016	Ongoing	October Governance Board reviewed and approved the Use Case and User Story approach.
---	--------------	---------	--

JULY 7, 2016 CONTEMPT ORDER STATUS UPDATES

The three status updates required in the July 7th Court Order are below.

1. Monetary sanctions – fines are imposed on a per class member, per day basis. On the 15th of every month, DSHS is required to submit contempt fines data to the court. These data will be submitted to the court on November 15, 2016 and will be included in this report when finalized as Appendix I.
2. Diversion plans – DSHS is ordered to develop, in consultation with the Court Monitor, plans for the expenditure of the contempt fines. The Diversion Workgroup submitted the court ordered Diversion Plan on August 19, 2016. The Diversion Services Request for Proposal (RFP) was submitted to the Court on October 4, 2016
3. Wait time data – DSHS shall submit to the Court wait time data in a manner identical to the data submitted on June 17, 2016 in the declaration of Bryan Zolnikov. These data are included in this report in Table 4.

AUGUST 15, 2016 ORDER MODIFYING PERMANENT INJUCTION AS TO IN JAIL COMPETENCY EVALUATIONS

Pursuant to the August 15, 2016 court order, DSHS must provide in-jail competency evaluations within 14 days of the signing of a court order. Where an in-jail evaluation cannot be completed within 14 days for those individuals where good cause applies (i.e., delay due to clinical reasons, attorney, interpreter, or defense expert), an extension from the ordering court must be secured or DSHS must immediately admit the individual to a state hospital to finish conducting the evaluation. In order to comply with the reporting requirements of the Court's order, DSHS identified a need to revise both the current process used for seeking extensions from the criminal court, as well as the data collected during that process. Since the August 15th court order, DSHS has identified a series of necessary changes that will enable DSHS to comply with the order, to include the following:

1. Develop a list of data elements needed to comply with the court order to include additional delay data;
2. Develop a data dictionary to define the data elements needed;
3. Develop a process of reporting the information to the courts for the extension requests;
4. Identify the cutoff date for seeking an extension;
5. Develop a standardized form that can be used for seeking good cause exceptions;
6. Develop an operating procedure to guide evaluators through the new good cause process;
7. Coordinate with the Attorney General's Office to ensure adequate representation;
8. Develop a process for collecting the data to report to the courts for the extensions and to maintain for monthly reporting;
9. Develop a model for the delays and the data pertaining to the delays;
10. Modify the current IT systems or develop a new database in which to maintain the information once all above steps are completed.

To date, DSHS has completed identifying the data elements, a process for the evaluators to collect the data that will be entered and reported to the courts, and the data dictionary. The process of reporting the information to the courts and identifying a cutoff date for seeking an extension is completed, and the standardized forms, the operating procedure, and coordination for Assistant Attorney General (AAG) representation has been completed. Interim steps for maintaining the data for monthly reporting have been identified and will be implemented using the current IT systems until the current IT system can be modified or a new database can be developed to maintain all of the necessary data. *Available October good cause exception data is now available as Appendix K in the Appendices section.

APPENDICES

Appendix A: Class Member--Evaluation Information for September 2016

Hospital	Class Member	County	Offense	Completion Method or Incomplete	Order Signed Date	Number of days from signed order to:			
						Order Received	Discovery	Complete	Incomplete to end of reporting
WSH	6648	PIERCE	FELONY	BED OFFER	8/3/2016	0	0	9/15/2016	43
WSH	6656	KING	FELONY	CRIC	8/3/2016	0	0	9/7/2016	35
WSH	6657	PIERCE	FELONY	FAXED	8/3/2016	1	1	9/1/2016	29
WSH	6659	KING	MISDEMEANOR	CANCELLED	8/4/2016	20	20	9/7/2016	34
WSH	6666	KING	FELONY	TIC	8/4/2016	0	0	9/14/2016	41
WSH	6682	KING	FELONY	FAXED	8/8/2016	0	0	9/1/2016	24
WSH	6683	COWLITZ	FELONY	BED OFFER	8/9/2016	7	7	9/9/2016	31
WSH	6705	KING	FELONY	FAXED	8/10/2016	0	0	9/8/2016	29
WSH	6717	SNOHOMISH	FELONY	FAXED	8/11/2016	0	1	9/1/2016	21
WSH	6726	KING	FELONY	FAXED	8/12/2016	0	0	9/8/2016	27
WSH	6727	KING	MISDEMEANOR	FAXED	8/12/2016	0	0	9/19/2016	38
WSH	6728	KING	MISDEMEANOR	WITHDRAWN	8/12/2016	0	0	9/7/2016	26
WSH	6730	KITSAP	FELONY	BED OFFER	8/15/2016	2	2	9/1/2016	17
WSH	6746	KING	FELONY	FAXED	8/15/2016	0	0	9/6/2016	22
WSH	6759	KING	MISDEMEANOR	FAXED	8/16/2016	1	1	9/7/2016	22
WSH	6771	KING	MISDEMEANOR	FAXED	8/17/2016	0	0	9/6/2016	20
WSH	6772	KING	FELONY	FAXED	8/17/2016	0	1	9/15/2016	29
WSH	6773	WHATCOM	FELONY	BED OFFER	8/18/2016	4	4	9/1/2016	14
WSH	6774	PIERCE	FELONY	BED OFFER	8/18/2016	0	0	9/1/2016	14
WSH	6783	KING	MISDEMEANOR	FAXED	8/18/2016	0	1	9/9/2016	22
WSH	6784	KING	FELONY	FAXED	8/18/2016	0	0	.	.
WSH	6785	KING	MISDEMEANOR	FAXED	8/18/2016	0	1	9/2/2016	15
WSH	6786	SKAGIT	FELONY	FAXED	8/18/2016	0	0	9/1/2016	14
WSH	6791	PIERCE	MISDEMEANOR	FAXED	8/19/2016	0	0	9/1/2016	13

WSH	6792	KITSAP	FELONY	BED OFFER	8/22/2016	1	1	9/8/2016	17
WSH	6793	PIERCE	FELONY	BED OFFER	8/22/2016	1	1	9/6/2016	15
WSH	6799	KING	FELONY	FAXED	8/22/2016	0	0	9/2/2016	11
WSH	6800	KING	MISDEMEANOR	FAXED	8/22/2016	0	1	9/28/2016	37
WSH	6801	KING	MISDEMEANOR	FAXED	8/22/2016	0	0	9/2/2016	11
WSH	6802	KING	MISDEMEANOR	FAXED	8/22/2016	0	1	9/9/2016	18
WSH	6803	PIERCE	MISDEMEANOR	FAXED	8/22/2016	0	0	9/1/2016	10
WSH	6804	PIERCE	MISDEMEANOR	FAXED	8/22/2016	0	0	9/1/2016	10
WSH	6805	LEWIS	MISDEMEANOR	FAXED	8/22/2016	1	1	9/1/2016	10
WSH	6806	GRAYS	FELONY	FAXED	8/22/2016	0	2	9/17/2016	26
WSH	6807	WHATCOM	FELONY	FAXED	8/22/2016	3	8	9/16/2016	25
WSH	6809	KING	FELONY	FAXED	8/23/2016	1	1	9/13/2016	21
WSH	6810	SNOHOMISH	MISDEMEANOR	FAXED	8/23/2016	0	0	9/1/2016	9
WSH	6811	PIERCE	MISDEMEANOR	FAXED	8/23/2016	0	0	9/2/2016	10
WSH	6812	CLALLAM	MISDEMEANOR	FAXED	8/23/2016	0	1	9/2/2016	10
WSH	6813	KING	FELONY	FAXED	8/23/2016	1	1	9/14/2016	22
WSH	6817	WHATCOM	MISDEMEANOR	FAXED	8/24/2016	0	0	9/1/2016	8
WSH	6818	PIERCE	MISDEMEANOR	FAXED	8/24/2016	0	0	9/6/2016	13
WSH	6819	SNOHOMISH	MISDEMEANOR	WITHDRAWN	8/24/2016	0	0	9/2/2016	9
WSH	6820	MASON	MISDEMEANOR	FAXED	8/24/2016	1	1	9/1/2016	8
WSH	6821	KING	MISDEMEANOR	FAXED	8/24/2016	0	0	9/2/2016	9
WSH	6822	KING	FELONY	BED OFFER	8/25/2016	1	1	.	.
WSH	6823	KING	FELONY	BED OFFER	8/25/2016	1	1	9/7/2016	13
WSH	6825	CLARK	MISDEMEANOR	FAXED	8/25/2016	0	0	9/1/2016	7
WSH	6826	SNOHOMISH	MISDEMEANOR	FAXED	8/25/2016	0	0	9/2/2016	8
WSH	6827	KING	MISDEMEANOR	FAXED	8/25/2016	0	1	9/1/2016	7
WSH	6828	KITSAP	FELONY	FAXED	8/25/2016	0	0	9/7/2016	13
WSH	6829	KING	FELONY	FAXED	8/25/2016	0	0	9/12/2016	18
WSH	6830	KING	FELONY	FAXED	8/25/2016	0	0	9/2/2016	8
WSH	6831	KING	MISDEMEANOR	FAXED	8/25/2016	0	1	9/9/2016	15
WSH	6832	CLARK	MISDEMEANOR	FAXED	8/25/2016	0	0	9/9/2016	15
WSH	6833	KING	FELONY	FAXED	8/26/2016	0	0	9/13/2016	18

WSH	6834	CLARK	MISDEMEANOR	FAXED	8/26/2016	0	0	9/2/2016	7
WSH	6835	KING	MISDEMEANOR	FAXED	8/26/2016	0	0	9/7/2016	12
WSH	6836	KING	MISDEMEANOR	FAXED	8/26/2016	0	0	9/7/2016	12
WSH	6837	SNOHOMISH	MISDEMEANOR	WITHDRAWN	8/26/2016	0	0	9/9/2016	14
WSH	6839	PIERCE	MISDEMEANOR	FAXED	8/29/2016	0	0	9/9/2016	11
WSH	6840	KING	MISDEMEANOR	FAXED	8/29/2016	0	0	9/2/2016	4
WSH	6841	KING	MISDEMEANOR	FAXED	8/29/2016	0	0	9/2/2016	4
WSH	6842	GRAYS	MISDEMEANOR	FAXED	8/29/2016	0	0	9/2/2016	4
WSH	6843	KING	MISDEMEANOR	FAXED	8/29/2016	0	0	9/8/2016	10
WSH	6844	GRAYS	MISDEMEANOR	FAXED	8/29/2016	0	0	9/7/2016	9
WSH	6845	KING	FELONY	FAXED	8/29/2016	0	0	9/9/2016	11
WSH	6846	KING	MISDEMEANOR	FAXED	8/30/2016	0	0	9/8/2016	9
WSH	6847	THURSTON	MISDEMEANOR	FAXED	8/30/2016	1	1	9/12/2016	13
WSH	6848	LEWIS	MISDEMEANOR	FAXED	8/30/2016	0	0	9/12/2016	13
WSH	6849	JEFFERSON	MISDEMEANOR	FAXED	8/30/2016	2	2	9/13/2016	14
WSH	6850	KING	MISDEMEANOR	FAXED	8/30/2016	0	1	9/7/2016	8
WSH	6851	KING	FELONY	FAXED	8/30/2016	0	0	9/7/2016	8
WSH	6852	PIERCE	MISDEMEANOR	FAXED	8/30/2016	0	0	9/9/2016	10
WSH	6853	KING	FELONY	BED OFFER	8/31/2016	0	0	9/13/2016	13
WSH	6854	WHATCOM	MISDEMEANOR	BED OFFER	8/31/2016	1	1	9/8/2016	8
WSH	6855	PIERCE	MISDEMEANOR	FAXED	8/31/2016	1	1	9/13/2016	13
WSH	6856	KING	MISDEMEANOR	FAXED	8/31/2016	0	0	9/19/2016	19
WSH	6857	KING	MISDEMEANOR	FAXED	8/31/2016	0	0	9/9/2016	9
WSH	6858	CLALLAM	FELONY	FAXED	8/31/2016	1	1	9/15/2016	15
WSH	7017	GRAYS	FELONY	FAXED	8/15/2016	0	2	9/1/2016	17
WSH	7018	PIERCE	FELONY	FAXED	8/17/2016	35	35	.	.
WSH	7020	PIERCE	FELONY	FAXED	8/19/2016	13	20	9/14/2016	26
WSH	7021	CLALLAM	FELONY	FAXED	8/19/2016	13	13	9/8/2016	20
WSH	7023	CLARK	MISDEMEANOR	FAXED	8/26/2016	0	0	9/6/2016	11
WSH	7024	KING	FELONY	FAXED	8/29/2016	1	1	9/14/2016	16
WSH	7025	SNOHOMISH	FELONY	FAXED	8/30/2016	16	16	9/21/2016	22
WSH	7026	KING	MISDEMEANOR	FAXED	8/30/2016	0	0	9/13/2016	14

WSH	7027	KING	FELONY	FAXED	8/30/2016	0	0	9/19/2016	20
WSH	7028	KITSAP	MISDEMEANOR	FAXED	8/30/2016	0	0	9/8/2016	9
WSH	7029	KITSAP	FELONY	FAXED	8/30/2016	0	0	9/8/2016	9
WSH	7030	KING	MISDEMEANOR	FAXED	8/30/2016	0	0	9/9/2016	10
WSH	7031	THURSTON	FELONY	FAXED	8/30/2016	2	2	9/11/2016	12
WSH	7032	ISLAND	FELONY	BED OFFER	8/31/2016	2	2	9/2/2016	2
WSH	7033	GRAYS	MISDEMEANOR	FAXED	8/31/2016	0	0	9/6/2016	6
WSH	7034	KITSAP	MISDEMEANOR	FAXED	8/31/2016	0	0	9/9/2016	9
WSH	7035	PACIFIC	FELONY	FAXED	8/31/2016	19	19	9/23/2016	23
WSH	7084	SKAGIT	FELONY	FAXED	9/1/2016	0	0	9/15/2016	14
WSH	7085	KING	MISDEMEANOR	FAXED	9/1/2016	0	0	9/15/2016	14
WSH	7086	KING	FELONY	FAXED	9/1/2016	0	5	9/20/2016	19
WSH	7087	PIERCE	MISDEMEANOR	FAXED	9/1/2016	0	0	9/14/2016	13
WSH	7088	KING	MISDEMEANOR	FAXED	9/1/2016	0	0	9/12/2016	11
WSH	7089	WHATCOM	FELONY	FAXED	9/1/2016	0	0	9/16/2016	15
WSH	7090	SKAGIT	FELONY	FAXED	9/1/2016	0	0	9/15/2016	14
WSH	7091	KING	MISDEMEANOR	FAXED	9/1/2016	0	0	9/12/2016	11
WSH	7092	WHATCOM	FELONY	FAXED	9/1/2016	0	1	9/16/2016	15
WSH	7093	KING	FELONY	TIC	9/1/2016	0	5	9/14/2016	13
WSH	7094	KING	MISDEMEANOR	TIC	9/1/2016	0	0	9/13/2016	12
WSH	7095	MASON	MISDEMEANOR	FAXED	9/1/2016	0	0	9/15/2016	14
WSH	7096	KITSAP	MISDEMEANOR	FAXED	9/1/2016	0	0	9/22/2016	21
WSH	7097	LEWIS	FELONY	FAXED	9/2/2016	0	0	9/20/2016	18
WSH	7098	KITSAP	FELONY	FAXED	9/2/2016	0	0	9/9/2016	7
WSH	7099	SNOHOMISH	MISDEMEANOR	FAXED	9/2/2016	10	10	9/20/2016	18
WSH	7100	THURSTON	FELONY	FAXED	9/2/2016	0	0	9/11/2016	9
WSH	7101	KING	MISDEMEANOR	FAXED	9/2/2016	0	0	9/13/2016	11
WSH	7102	KING	MISDEMEANOR	FAXED	9/2/2016	0	0	9/9/2016	7
WSH	7103	KING	MISDEMEANOR	FAXED	9/2/2016	0	0	9/15/2016	13
WSH	7104	LEWIS	FELONY	FAXED	9/2/2016	0	0	9/14/2016	12
WSH	7105	KING	FELONY	TIC	9/2/2016	0	4	9/26/2016	24
WSH	7106	KING	MISDEMEANOR	FAXED	9/2/2016	0	0	9/23/2016	21

WSH	7107	KING	MISDEMEANOR	FAXED	9/2/2016	4	4	9/13/2016	11
WSH	7108	PIERCE	MISDEMEANOR	WITHDRAWN	9/2/2016	0	4	9/9/2016	7
WSH	7109	KING	MISDEMEANOR	WITHDRAWN	9/3/2016	0	3	9/14/2016	11
WSH	7110	COWLITZ	FELONY	FAXED	9/6/2016	0	0	9/19/2016	13
WSH	7111	KING	MISDEMEANOR	FAXED	9/6/2016	0	0	9/14/2016	8
WSH	7112	KING	MISDEMEANOR	FAXED	9/6/2016	0	0	9/13/2016	7
WSH	7113	KITSAP	MISDEMEANOR	FAXED	9/6/2016	1	1	9/16/2016	10
WSH	7114	KING	MISDEMEANOR	FAXED	9/6/2016	0	0	9/23/2016	17
WSH	7115	KING	FELONY	FAXED	9/6/2016	0	1	9/27/2016	21
WSH	7116	KING	MISDEMEANOR	FAXED	9/6/2016	0	0	9/14/2016	8
WSH	7117	KING	MISDEMEANOR	FAXED	9/6/2016	0	0	9/16/2016	10
WSH	7118	KING	FELONY	FAXED	9/6/2016	0	0	9/15/2016	9
WSH	7119	CLARK	MISDEMEANOR	WITHDRAWN	9/6/2016	0	1	9/13/2016	7
WSH	7120	KING	MISDEMEANOR	FAXED	9/6/2016	1	1	9/16/2016	10
WSH	7121	KING	MISDEMEANOR	FAXED	9/6/2016	0	0	9/17/2016	11
WSH	7122	KING	FELONY	FAXED	9/7/2016	0	0	9/19/2016	12
WSH	7123	WHATCOM	MISDEMEANOR	FAXED	9/7/2016	0	0	9/20/2016	13
WSH	7124	SNOHOMISH	FELONY	FAXED	9/7/2016	0	0	9/29/2016	22
WSH	7125	KING	MISDEMEANOR	FAXED	9/7/2016	0	0	9/20/2016	13
WSH	7126	KING	MISDEMEANOR	FAXED	9/7/2016	0	0	9/22/2016	15
WSH	7127	CLARK	MISDEMEANOR	FAXED	9/7/2016	0	0	9/28/2016	21
WSH	7128	SNOHOMISH	MISDEMEANOR	FAXED	9/7/2016	0	0	9/20/2016	13
WSH	7129	KITSAP	FELONY	FAXED	9/7/2016	0	0	9/16/2016	9
WSH	7130	KING	MISDEMEANOR	FAXED	9/7/2016	0	0	9/15/2016	8
WSH	7131	KING	FELONY	FAXED	9/8/2016	0	1	9/27/2016	19
WSH	7132	KING	FELONY	FAXED	9/8/2016	0	0	9/27/2016	19
WSH	7133	CLARK	FELONY	FAXED	9/8/2016	0	1	9/20/2016	12
WSH	7134	KING	MISDEMEANOR	FAXED	9/8/2016	0	0	9/13/2016	5
WSH	7135	THURSTON	MISDEMEANOR	FAXED	9/8/2016	0	0	9/23/2016	15
WSH	7136	KING	MISDEMEANOR	FAXED	9/8/2016	1	1	9/22/2016	14
WSH	7137	KING	MISDEMEANOR	FAXED	9/8/2016	1	1	9/19/2016	11
WSH	7138	GRAYS	MISDEMEANOR	FAXED	9/8/2016	1	1	9/15/2016	7

WSH	7139	CLARK	FELONY	FAXED	9/8/2016	0	1	9/14/2016	6
WSH	7140	KING	MISDEMEANOR	FAXED	9/8/2016	0	1	9/15/2016	7
WSH	7141	PIERCE	MISDEMEANOR	FAXED	9/8/2016	0	1	9/12/2016	4
WSH	7142	KING	FELONY	FAXED	9/8/2016	0	1	9/21/2016	13
WSH	7143	KING	MISDEMEANOR	FAXED	9/9/2016	0	0	9/27/2016	18
WSH	7144	KITSAP	FELONY	FAXED	9/9/2016	0	0	9/23/2016	14
WSH	7145	KING	MISDEMEANOR	FAXED	9/9/2016	0	0	9/20/2016	11
WSH	7146	CLARK	MISDEMEANOR	FAXED	9/9/2016	0	0	9/9/2016	0
WSH	7147	THURSTON	MISDEMEANOR	FAXED	9/9/2016	0	3	9/14/2016	5
WSH	7148	KING	MISDEMEANOR	FAXED	9/9/2016	0	0	9/19/2016	10
WSH	7149	GRAYS	MISDEMEANOR	FAXED	9/9/2016	4	4	9/21/2016	12
WSH	7150	WHATCOM	FELONY	FAXED	9/9/2016	0	0	.	.
WSH	7151	KING	MISDEMEANOR	FAXED	9/9/2016	0	0	9/20/2016	11
WSH	7152	SNOHOMISH	FELONY	FAXED	9/9/2016	0	0	9/27/2016	18
WSH	7153	KING	MISDEMEANOR	FAXED	9/12/2016	0	0	9/19/2016	7
WSH	7154	SNOHOMISH	FELONY	WITHDRAWN	9/12/2016	0	0	9/28/2016	16
WSH	7155	LEWIS	FELONY	FAXED	9/12/2016	0	0	9/21/2016	9
WSH	7156	KING	MISDEMEANOR	FAXED	9/12/2016	0	0	9/22/2016	10
WSH	7157	PIERCE	MISDEMEANOR	FAXED	9/12/2016	0	0	9/14/2016	2
WSH	7158	PIERCE	FELONY	FAXED	9/12/2016	2	2	9/26/2016	14
WSH	7159	KING	MISDEMEANOR	FAXED	9/12/2016	0	0	9/28/2016	16
WSH	7160	KING	MISDEMEANOR	WITHDRAWN	9/12/2016	0	0	9/19/2016	7
WSH	7161	CLARK	FELONY	FAXED	9/12/2016	0	0	9/21/2016	9
WSH	7162	KING	MISDEMEANOR	FAXED	9/12/2016	0	0	9/15/2016	3
WSH	7163	CLARK	MISDEMEANOR	FAXED	9/12/2016	0	0	9/23/2016	11
WSH	7164	KING	MISDEMEANOR	FAXED	9/12/2016	0	1	9/28/2016	16
WSH	7165	KING	MISDEMEANOR	FAXED	9/13/2016	0	0	.	.
WSH	7166	KING	MISDEMEANOR	FAXED	9/13/2016	0	1	9/28/2016	15
WSH	7167	KING	FELONY	FAXED	9/13/2016	0	1	9/30/2016	17
WSH	7168	PIERCE	MISDEMEANOR	WITHDRAWN	9/13/2016	0	0	9/20/2016	7
WSH	7169	THURSTON	MISDEMEANOR	FAXED	9/13/2016	0	0	9/26/2016	13
WSH	7170	KING	FELONY	FAXED	9/13/2016	1	1	.	.

WSH	7171	SNOHOMISH	MISDEMEANOR	FAXED	9/13/2016	1	1	9/17/2016	4
WSH	7172	CLARK	FELONY	FAXED	9/14/2016	0	0	9/23/2016	9
WSH	7173	PIERCE	MISDEMEANOR	FAXED	9/14/2016	0	2	9/23/2016	9
WSH	7174	KING	MISDEMEANOR	WITHDRAWN	9/14/2016	0	0	9/21/2016	7
WSH	7175	KING	FELONY	FAXED	9/14/2016	0	0	.	.
WSH	7176	KING	FELONY	FAXED	9/15/2016	0	0	.	.
WSH	7177	PIERCE	FELONY	FAXED	9/15/2016	4	5	.	.
WSH	7178	KING	FELONY	FAXED	9/15/2016	0	1	.	.
WSH	7179	KING	MISDEMEANOR	FAXED	9/15/2016	0	0	9/29/2016	14
WSH	7180	KING	FELONY	FAXED	9/15/2016	0	0	9/21/2016	6
WSH	7181	KING	FELONY	TIC	9/15/2016	0	1	.	.
WSH	7182	PIERCE	FELONY	FAXED	9/15/2016	0	0	9/29/2016	14
WSH	7183	KING	MISDEMEANOR	FAXED	9/15/2016	0	0	.	.
WSH	7184	KING	FELONY	FAXED	9/15/2016	0	0	9/29/2016	14
WSH	7185	CLARK	FELONY	FAXED	9/15/2016	1	1	9/27/2016	12
WSH	7186	KING	MISDEMEANOR	FAXED	9/16/2016	0	0	9/28/2016	12
WSH	7187	KING	FELONY	FAXED	9/16/2016	3	3	.	.
WSH	7188	SNOHOMISH	MISDEMEANOR	FAXED	9/16/2016	0	0	9/26/2016	10
WSH	7189	SNOHOMISH	MISDEMEANOR	WITHDRAWN	9/16/2016	0	0	9/29/2016	13
WSH	7190	KING	MISDEMEANOR	FAXED	9/16/2016	0	0	9/22/2016	6
WSH	7191	KING	MISDEMEANOR	FAXED	9/16/2016	0	0	9/23/2016	7
WSH	7192	WHATCOM	MISDEMEANOR	FAXED	9/16/2016	3	3	.	.
WSH	7193	CLARK	MISDEMEANOR	FAXED	9/16/2016	0	0	9/25/2016	9
WSH	7194	WHATCOM	FELONY	FAXED	9/16/2016	0	0	.	.
WSH	7195	PIERCE	FELONY	WITHDRAWN	9/16/2016	0	0	9/20/2016	4
WSH	7196	KING	MISDEMEANOR	FAXED	9/17/2016	3	3	9/30/2016	13
WSH	7197	KING	MISDEMEANOR	FAXED	9/19/2016	0	0	.	.
WSH	7198	SNOHOMISH	FELONY	FAXED	9/19/2016	1	1	.	.
WSH	7199	THURSTON	FELONY	FAXED	9/19/2016	0	0	9/27/2016	8
WSH	7200	GRAYS	FELONY	FAXED	9/19/2016	0	0	9/21/2016	2
WSH	7201	CLARK	FELONY	FAXED	9/19/2016	0	0	.	.
WSH	7202	CLARK	MISDEMEANOR	FAXED	9/19/2016	0	0	.	.

WSH	7203	KING	MISDEMEANOR	FAXED	9/19/2016	0	0	9/29/2016	10
WSH	7204	SNOHOMISH	MISDEMEANOR	FAXED	9/19/2016	0	0	9/30/2016	11
WSH	7205	KING	MISDEMEANOR	FAXED	9/19/2016	0	0	.	.
WSH	7206	SNOHOMISH	FELONY	FAXED	9/19/2016	0	0	.	.
WSH	7207	KING	FELONY	CRIC	9/19/2016	1	1	.	.
WSH	7208	CLARK	MISDEMEANOR	FAXED	9/19/2016	0	4	.	.
WSH	7209	KING	FELONY	TIC	9/19/2016	0	0	.	.
WSH	7210	KING	MISDEMEANOR	FAXED	9/20/2016	3	3	.	.
WSH	7211	KING	MISDEMEANOR	FAXED	9/20/2016	0	0	9/29/2016	9
WSH	7212	KING	MISDEMEANOR	WITHDRAWN	9/20/2016	1	1	.	.
WSH	7213	KING	MISDEMEANOR	FAXED	9/20/2016	0	0	.	.
WSH	7214	KING	MISDEMEANOR	FAXED	9/20/2016	3	3	.	.
WSH	7215	KING	FELONY	INCOMPLETE	9/20/2016	0	0	.	.
WSH	7216	PIERCE	MISDEMEANOR	FAXED	9/20/2016	0	0	9/27/2016	7
WSH	7217	COWLITZ	FELONY	FAXED	9/20/2016	0	0	.	.
WSH	7218	SNOHOMISH	MISDEMEANOR	FAXED	9/20/2016	0	0	9/29/2016	9
WSH	7219	KING	MISDEMEANOR	FAXED	9/20/2016	0	0	.	.
WSH	7220	SNOHOMISH	FELONY	FAXED	9/20/2016	0	3	.	.
WSH	7221	THURSTON	FELONY	FAXED	9/20/2016	0	0	9/29/2016	9
WSH	7222	KING	MISDEMEANOR	TIC	9/21/2016	0	0	.	.
WSH	7223	PIERCE	MISDEMEANOR	FAXED	9/21/2016	1	1	9/28/2016	7
WSH	7224	KING	MISDEMEANOR	FAXED	9/21/2016	0	0	.	.
WSH	7225	PIERCE	MISDEMEANOR	FAXED	9/21/2016	0	0	.	.
WSH	7226	THURSTON	FELONY	FAXED	9/21/2016	0	0	9/27/2016	6
WSH	7227	KING	MISDEMEANOR	FAXED	9/21/2016	0	0	.	.
WSH	7228	KING	MISDEMEANOR	FAXED	9/21/2016	0	0	9/30/2016	9
WSH	7229	GRAYS	FELONY	FAXED	9/21/2016	0	0	.	.
WSH	7230	CLARK	MISDEMEANOR	FAXED	9/21/2016	0	0	.	.
WSH	7231	KING	MISDEMEANOR	FAXED	9/21/2016	0	0	9/28/2016	7
WSH	7232	THURSTON	FELONY	FAXED	9/21/2016	0	0	9/28/2016	7
WSH	7233	KITSAP	FELONY	FAXED	9/21/2016	1	1	9/28/2016	7
WSH	7234	SNOHOMISH	MISDEMEANOR	FAXED	9/21/2016	0	0	.	.

WSH	7235	THURSTON	MISDEMEANOR	TIC	9/21/2016	0	0	.	.
WSH	7236	KING	MISDEMEANOR	FAXED	9/21/2016	0	0	9/30/2016	9
WSH	7237	CLARK	MISDEMEANOR	WITHDRAWN	9/21/2016	0	0	9/27/2016	6
WSH	7238	SNOHOMISH	FELONY	TIC	9/21/2016	0	0	.	.
WSH	7239	THURSTON	FELONY	FAXED	9/21/2016	0	0	.	.
WSH	7240	KING	MISDEMEANOR	FAXED	9/21/2016	0	0	9/28/2016	7
WSH	7241	GRAYS	MISDEMEANOR	FAXED	9/22/2016	0	0	.	.
WSH	7242	SNOHOMISH	FELONY	FAXED	9/22/2016	0	0	.	.
WSH	7243	KING	MISDEMEANOR	FAXED	9/22/2016	0	0	.	.
WSH	7244	KING	FELONY	FAXED	9/22/2016	1	1	.	.
WSH	7245	KING	MISDEMEANOR	FAXED	9/22/2016	0	0	.	.
WSH	7246	SNOHOMISH	MISDEMEANOR	FAXED	9/22/2016	0	0	.	.
WSH	7247	KING	MISDEMEANOR	FAXED	9/22/2016	0	0	9/28/2016	6
WSH	7248	KING	MISDEMEANOR	FAXED	9/22/2016	0	0	.	.
WSH	7249	KING	FELONY	FAXED	9/22/2016	1	1	9/29/2016	7
WSH	7250	WHATCOM	FELONY	FAXED	9/22/2016	0	1	.	.
WSH	7251	COWLITZ	FELONY	FAXED	9/22/2016	0	0	.	.
WSH	7252	KING	MISDEMEANOR	FAXED	9/22/2016	0	0	.	.
WSH	7253	KING	FELONY	FAXED	9/22/2016	1	1	.	.
WSH	7254	SNOHOMISH	MISDEMEANOR	FAXED	9/22/2016	0	0	.	.
WSH	7255	SNOHOMISH	FELONY	TIC	9/22/2016	1	1	.	.
WSH	7256	SKAGIT	FELONY	FAXED	9/22/2016	1	1	.	.
WSH	7257	CLARK	MISDEMEANOR	WITHDRAWN	9/22/2016	1	1	9/30/2016	8
WSH	7258	CLARK	MISDEMEANOR	FAXED	9/22/2016	1	1	.	.
WSH	7259	MASON	MISDEMEANOR	FAXED	9/22/2016	0	0	.	.
WSH	7260	WHATCOM	FELONY	FAXED	9/22/2016	0	0	.	.
WSH	7261	WHATCOM	FELONY	FAXED	9/22/2016	0	0	.	.
WSH	7262	SKAGIT	FELONY	FAXED	9/22/2016	1	1	.	.
WSH	7263	WHATCOM	MISDEMEANOR	INCOMPLETE	9/23/2016	0	0	.	.
WSH	7264	KITSAP	FELONY	FAXED	9/23/2016	4	4	.	.
WSH	7265	CLALLAM	FELONY	FAXED	9/23/2016	3	3	.	.
WSH	7266	CLARK	FELONY	FAXED	9/23/2016	0	0	.	.

WSH	7267	CLARK	FELONY	FAXED	9/23/2016	0	0	9/30/2016	7
WSH	7268	CLARK	MISDEMEANOR	FAXED	9/23/2016	0	0	9/30/2016	7
WSH	7269	KING	MISDEMEANOR	FAXED	9/23/2016	0	0	9/30/2016	7
WSH	7270	CLARK	FELONY	FAXED	9/23/2016	0	0	.	.
WSH	7271	KING	MISDEMEANOR	FAXED	9/23/2016	0	0	.	.
WSH	7272	KING	MISDEMEANOR	FAXED	9/23/2016	0	0	.	.
WSH	7273	KING	MISDEMEANOR	FAXED	9/23/2016	0	0	9/29/2016	6
WSH	7274	KITSAP	MISDEMEANOR	FAXED	9/23/2016	4	4	.	.
WSH	7275	PIERCE	MISDEMEANOR	WITHDRAWN	9/26/2016	0	0	.	.
WSH	7276	KING	MISDEMEANOR	FAXED	9/26/2016	0	0	.	.
WSH	7277	KING	MISDEMEANOR	FAXED	9/26/2016	0	0	9/29/2016	3
WSH	7278	CLALLAM	FELONY	FAXED	9/26/2016	1	1	.	.
WSH	7279	KING	FELONY	FAXED	9/23/2016	0	0	9/29/2016	6
WSH	7280	CLALLAM	MISDEMEANOR	FAXED	9/26/2016	0	0	.	.
WSH	7281	KING	FELONY	WITHDRAWN	9/26/2016	0	0	.	.
WSH	7282	CLALLAM	MISDEMEANOR	FAXED	9/26/2016	0	0	.	.
WSH	7283	KING	MISDEMEANOR	FAXED	9/26/2016	1	1	.	.
WSH	7284	KING	MISDEMEANOR	WITHDRAWN	9/27/2016	1	1	.	.
WSH	7285	KING	MISDEMEANOR	INCOMPLETE	9/27/2016	0	0	.	.
WSH	7286	LEWIS	FELONY	FAXED	9/27/2016	0	0	.	.
WSH	7287	SNOHOMISH	FELONY	FAXED	9/27/2016	0	0	.	.
WSH	7288	PIERCE	MISDEMEANOR	WITHDRAWN	9/27/2016	0	0	9/28/2016	1
WSH	7289	KING	MISDEMEANOR	FAXED	9/27/2016	1	1	.	.
WSH	7290	KITSAP	MISDEMEANOR	FAXED	9/27/2016	0	0	.	.
WSH	7291	MASON	MISDEMEANOR	FAXED	9/27/2016	0	0	.	.
WSH	7292	CLARK	MISDEMEANOR	FAXED	9/27/2016	0	0	.	.
WSH	7293	KITSAP	FELONY	FAXED	9/27/2016	0	0	.	.
WSH	7294	LEWIS	MISDEMEANOR	WITHDRAWN	9/27/2016	0	0	.	.
WSH	7295	THURSTON	FELONY	FAXED	9/27/2016	0	0	.	.
WSH	7296	SNOHOMISH	MISDEMEANOR	FAXED	9/28/2016	0	1	.	.
WSH	7297	KING	MISDEMEANOR	FAXED	9/28/2016	0	0	.	.
WSH	7298	KING	MISDEMEANOR	FAXED	9/28/2016	0	1	.	.

WSH	7299	SNOHOMISH	MISDEMEANOR	WITHDRAWN	9/28/2016	0	0	.	.
WSH	7300	GRAYS HARBOR	MISDEMEANOR	FAXED	9/28/2016	0	0	.	.
WSH	7302	THURSTON	FELONY	FAXED	9/28/2016	0	0	.	.
WSH	7303	KING	MISDEMEANOR	FAXED	9/28/2016	0	0	.	.
WSH	7304	PIERCE	MISDEMEANOR	FAXED	9/28/2016	0	0	.	.
WSH	7305	SNOHOMISH	MISDEMEANOR	FAXED	9/28/2016	0	0	.	.
WSH	7306	KING	MISDEMEANOR	FAXED	9/28/2016	0	0	.	.
WSH	7307	SNOHOMISH	FELONY	INCOMPLETE	9/29/2016	0	0	.	.
WSH	7308	KING	MISDEMEANOR	WITHDRAWN	9/29/2016	0	0	.	.
WSH	7309	MASON	MISDEMEANOR	FAXED	9/29/2016	0	0	.	.
WSH	7310	SKAGIT	FELONY	FAXED	9/29/2016	0	0	.	.
WSH	7311	LEWIS	FELONY	FAXED	9/29/2016	0	0	.	.
WSH	7312	WHATCOM	FELONY	FAXED	9/29/2016	0	0	.	.
WSH	7313	WHATCOM	MISDEMEANOR	FAXED	9/29/2016	0	0	.	.
WSH	7314	SNOHOMISH	MISDEMEANOR	WITHDRAWN	9/29/2016	0	0	.	.
WSH	7315	MASON	FELONY	FAXED	9/29/2016	0	0	.	.
WSH	7316	KING	MISDEMEANOR	FAXED	9/29/2016	0	0	.	.
WSH	7317	PIERCE	MISDEMEANOR	FAXED	9/30/2016	0	0	.	.
WSH	7318	KING	MISDEMEANOR	FAXED	9/30/2016	0	0	.	.
WSH	7319	KING	MISDEMEANOR	FAXED	9/30/2016	0	0	.	.
WSH	7320	JEFFERSON	MISDEMEANOR	FAXED	9/30/2016	0	0	.	.
WSH	7321	KING	MISDEMEANOR	FAXED	9/30/2016	0	0	.	.
WSH	7400	PIERCE	FELONY	BED OFFER	9/1/2016	1	1	9/7/2016	6
WSH	7401	KING	FELONY	BED OFFER	9/2/2016	0	0	9/22/2016	20
WSH	7402	KING	FELONY	CANCELLED	9/2/2016	24	24	.	.
WSH	7404	KING	FELONY	BED OFFER	9/6/2016	0	0	.	.
WSH	7405	THURSTON	FELONY	BED OFFER	9/7/2016	0	0	.	.
WSH	7406	KING	FELONY	BED OFFER	9/7/2016	0	0	9/26/2016	19
WSH	7407	KING	FELONY	BED OFFER	9/8/2016	0	0	9/16/2016	8
WSH	7408	PIERCE	MISDEMEANOR	BED OFFER	9/8/2016	0	0	9/21/2016	13
WSH	7409	THURSTON	FELONY	BED OFFER	9/12/2016	0	0	9/28/2016	16
WSH	7410	KING	MISDEMEANOR	BED OFFER	9/14/2016	1	1	.	.

WSH	7411	PIERCE	FELONY	BED OFFER	9/15/2016	0	0	.	.
WSH	7412	PIERCE	MISDEMEANOR	BED OFFER	9/16/2016	3	3	.	.
WSH	7413	PIERCE	FELONY	CANCELLED	9/16/2016	6	6	.	.
WSH	7414	PIERCE	FELONY	BED OFFER	9/16/2016	3	3	.	.
WSH	7415	PIERCE	FELONY	BED OFFER	9/16/2016	5	5	.	.
WSH	7416	KING	FELONY	BED OFFER	9/19/2016	0	0	.	.
WSH	7417	PIERCE	FELONY	BED OFFER	9/22/2016	1	1	.	.
WSH	7418	PIERCE	FELONY	BED OFFER	9/27/2016	0	0	.	.
WSH	7419	PIERCE	FELONY	INCOMPLETE	9/28/2016	1	1	.	.
WSH	7420	PIERCE	FELONY	BED OFFER	9/29/2016	0	0	9/29/2016	0
WSH	7546	GRAYS	FELONY	FAXED	9/19/2016	17	17	.	.
WSH	7547	COWLITZ	FELONY	FAXED	9/23/2016	25	25	.	.
WSH	7548	COWLITZ	FELONY	FAXED	9/27/2016	1	1	.	.
WSH	7549	KING	FELONY	CANCELLED	9/28/2016	0	0	9/28/2016	0
WSH	7550	KING	FELONY	FAXED	9/28/2016	1	1	.	.
WSH	7551	THURSTON	FELONY	FAXED	9/28/2016	1	1	.	.
WSH	7552	PIERCE	MISDEMEANOR	FAXED	9/28/2016	0	2	.	.
WSH	7553	WHATCOM	FELONY	BED OFFER	9/29/2016	0	0	.	.
WSH	7554	KING	FELONY	INCOMPLETE	9/29/2016	0	0	.	.
WSH	7555	WHATCOM	FELONY	FAXED	9/29/2016	0	0	.	.
WSH	7556	KING	FELONY	FAXED	9/29/2016	0	0	.	.
WSH	7557	GRAYS	MISDEMEANOR	FAXED	9/29/2016	0	0	.	.
WSH	7558	SKAGIT	FELONY	INCOMPLETE	9/29/2016	0	0	.	.
WSH	7559	MASON	MISDEMEANOR	FAXED	9/29/2016	0	5	.	.
WSH	7560	CLARK	FELONY	FAXED	9/30/2016	0	0	.	.
WSH	7561	KING	MISDEMEANOR	INCOMPLETE	9/30/2016	4	4	.	.
WSH	7562	KITSAP	MISDEMEANOR	FAXED	9/30/2016	0	0	.	.
WSH	7563	KING	MISDEMEANOR	FAXED	9/30/2016	0	0	.	.
WSH	7564	CLARK	FELONY	FAXED	9/30/2016	0	0	.	.
WSH	7565	KING	MISDEMEANOR	FAXED	9/30/2016	0	11	.	.
WSH	7566	PIERCE	MISDEMEANOR	FAXED	9/30/2016	0	0	.	.
WSH	7567	PIERCE	FELONY	FAXED	9/30/2016	3	3	.	.

ESH	6881	SPOKANE	FELONY	FAX	8/14/2016	4	4	9/6/2016	23
ESH	6883	YAKIMA	MISDEMEANOR	FAX	8/15/2016	0	0	9/1/2016	17
ESH	6888	YAKIMA	FELONY	FAX	8/17/2016	1	1	9/2/2016	16
ESH	6889	SPOKANE	FELONY	FAX	8/17/2016	1	1	9/2/2016	16
ESH	6894	ASOTIN	FELONY	FAX	8/18/2016	0	1	9/1/2016	14
ESH	6895	YAKIMA	FELONY	FAX	8/18/2016	1	4	9/7/2016	20
ESH	6898	YAKIMA	FELONY	FAX	8/19/2016	3	3	9/7/2016	19
ESH	6900	SPOKANE	FELONY	FAX	8/22/2016	1	1	9/13/2016	22
ESH	6903	FRANKLIN	MISDEMEANOR	FAX	8/23/2016	0	0	9/15/2016	23
ESH	6904	GRANT	FELONY	FAX	8/23/2016	1	1	9/1/2016	9
ESH	6905	GRANT	MISDEMEANOR	FAX	8/24/2016	0	1	9/1/2016	8
ESH	6906	BENTON	MISDEMEANOR	FAX	8/24/2016	0	0	9/2/2016	9
ESH	6907	FRANKLIN	FELONY	FAX	8/24/2016	0	0	9/15/2016	22
ESH	6908	BENTON	MISDEMEANOR	FAX	8/24/2016	0	0	9/2/2016	9
ESH	6910	SPOKANE	MISDEMEANOR	FAX	8/25/2016	0	0	9/16/2016	22
ESH	6912	SPOKANE	FELONY	FAX	8/26/2016	0	0	9/7/2016	12
ESH	7038	SPOKANE	FELONY	FAX	8/14/2016	4	4	9/6/2016	23
ESH	7043	YAKIMA	FELONY	FAX	8/18/2016	1	4	9/7/2016	20
ESH	7044	YAKIMA	FELONY	FAX	8/19/2016	3	3	9/7/2016	19
ESH	7045	BENTON	MISDEMEANOR	FAX	8/24/2016	7	7	9/12/2016	19
ESH	7046	SPOKANE	FELONY	FAX	8/25/2016	1	1	9/19/2016	25
ESH	7047	SPOKANE	FELONY	FAX	8/26/2016	0	0	9/7/2016	12
ESH	7048	SPOKANE	FELONY	FAX	8/26/2016	0	0	9/8/2016	13
ESH	7049	SPOKANE	FELONY	FAX	8/26/2016	3	3	9/9/2016	14
ESH	7050	ASOTIN	FELONY	ADMISSION	8/29/2016	1	1	9/1/2016	3
ESH	7051	ASOTIN	FELONY	ADMISSION	8/29/2016	1	1	9/1/2016	3
ESH	7054	GRANT	FELONY	FAX	8/29/2016	1	1	9/13/2016	15
ESH	7055	SPOKANE	FELONY	FAX	8/29/2016	0	2	9/13/2016	15
ESH	7056	SPOKANE	MISDEMEANOR	ADMISSION	8/30/2016	16	16	9/19/2016	20
ESH	7057	SPOKANE	MISDEMEANOR	FAX	8/30/2016	0	0	9/12/2016	13
ESH	7058	FRANKLIN	MISDEMEANOR	FAX	8/30/2016	0	0	9/16/2016	17
ESH	7059	FRANKLIN	FELONY	FAX	8/30/2016	0	0	9/14/2016	15

ESH	7060	FRANKLIN	MISDEMEANOR	FAX	8/30/2016	0	0	9/13/2016	14
ESH	7061	STEVENS	FELONY	FAX	8/30/2016	1	0	9/12/2016	13
ESH	7062	FRANKLIN	FELONY	FAX	8/30/2016	1	1	9/13/2016	14
ESH	7063	COLUMBIA	FELONY	ADMISSION	8/31/2016	1	1	9/8/2016	8
ESH	7065	SPOKANE	MISDEMEANOR	FAX	8/31/2016	0	0	.	.
ESH	7066	BENTON	MISDEMEANOR	FAX	8/31/2016	1	1	.	.
ESH	7067	SPOKANE	FELONY	FAX	8/31/2016	1	1	9/19/2016	19
ESH	7352	SPOKANE	FELONY	FAX	9/1/2016	1	1	9/15/2016	14
ESH	7353	BENTON	FELONY	FAX	9/1/2016	0	0	9/14/2016	13
ESH	7354	YAKIMA	MISDEMEANOR	FAX	9/2/2016	4	4	.	.
ESH	7355	YAKIMA	FELONY	FAX	9/2/2016	0	0	9/19/2016	17
ESH	7356	LINCOLN	FELONY	FAX	9/6/2016	0	0	.	.
ESH	7357	YAKIMA	MISDEMEANOR	FAX	9/6/2016	1	1	9/19/2016	13
ESH	7358	GRANT	FELONY	FAX	9/6/2016	0	0	9/13/2016	7
ESH	7359	CHELAN	FELONY	FAX	9/7/2016	0	1	9/21/2016	14
ESH	7360	OKANOGAN	FELONY	FAX	9/7/2016	0	0	9/14/2016	7
ESH	7361	SPOKANE	MISDEMEANOR	FAX	9/8/2016	0	0	.	.
ESH	7362	PEND	FELONY	FAX	9/8/2016	0	0	9/20/2016	12
ESH	7363	SPOKANE	FELONY	FAX	9/9/2016	3	3	.	.
ESH	7364	SPOKANE	FELONY	FAX	9/9/2016	5	5	.	.
ESH	7365	BENTON	MISDEMEANOR	FAX	9/9/2016	0	0	9/15/2016	6
ESH	7366	OKANOGAN	FELONY	FAX	9/12/2016	1	1	9/28/2016	16
ESH	7368	SPOKANE	MISDEMEANOR	FAX	9/12/2016	0	0	9/23/2016	11
ESH	7369	SPOKANE	FELONY	FAX	9/13/2016	0	0	9/28/2016	15
ESH	7370	SPOKANE	FELONY	FAX	9/13/2016	1	1	9/27/2016	14
ESH	7371	FRANKLIN	MISDEMEANOR	FAX	9/14/2016	6	6	.	.
ESH	7373	FRANKLIN	MISDEMEANOR	FAX	9/14/2016	0	0	9/23/2016	9
ESH	7374	BENTON	FELONY	FAX	9/15/2016	0	0	.	.
ESH	7376	BENTON	FELONY	FAX	9/15/2016	0	0	9/27/2016	12
ESH	7377	YAKIMA	MISDEMEANOR	FAX	9/15/2016	0	0	9/27/2016	12
ESH	7378	YAKIMA	MISDEMEANOR	FAX	9/16/2016	0	0	9/30/2016	14
ESH	7379	SPOKANE	FELONY	FAX	9/16/2016	0	0	.	.

ESH	7380	OKANOGAN	FELONY	FAX	9/20/2016	1	1	.	.
ESH	7381	FRANKLIN	FELONY	FAX	9/20/2016	2	2	.	.
ESH	7382	BENTON	MISDEMEANOR	FAX	9/20/2016	0	0	.	.
ESH	7383	SPOKANE	FELONY	FAX	9/20/2016	0	0	9/30/2016	10
ESH	7384	CHELAN	MISDEMEANOR	FAX	9/20/2016	0	0	.	.
ESH	7385	BENTON	MISDEMEANOR	FAX	9/21/2016	0	0	9/29/2016	8
ESH	7386	BENTON	FELONY	FAX	9/22/2016	0	0	.	.
ESH	7387	CHELAN	MISDEMEANOR	FAX	9/22/2016	0	0	.	.
ESH	7388	YAKIMA	MISDEMEANOR	FAX	9/23/2016	3	3	.	.
ESH	7389	SPOKANE	FELONY	FAX	9/23/2016	0	3	.	.
ESH	7390	SPOKANE	FELONY	FAX	9/26/2016	0	0	9/30/2016	4
ESH	7391	SPOKANE	FELONY	FAX	9/26/2016	1	1	.	.
ESH	7392	GRANT	FELONY	FAX	9/27/2016	1	1	.	.
ESH	7394	CHELAN	MISDEMEANOR	FAX	9/27/2016	0	1	.	.
ESH	7395	BENTON	MISDEMEANOR	FAX	9/28/2016	0	1	.	.
ESH	7396	SPOKANE	MISDEMEANOR	FAX	9/28/2016	0	.	.	.
ESH	7397	SPOKANE	MISDEMEANOR	FAX	9/28/2016	0	2	.	.
ESH	7398	BENTON	MISDEMEANOR	FAX	9/28/2016	0	1	.	.
ESH	7399	SPOKANE	MISDEMEANOR	FAX	9/29/2016	0	1	.	.
ESH	7422	YAKIMA	MISDEMEANOR	ADMISSION	9/1/2016	0	0	9/8/2016	7
ESH	7423	SPOKANE	MISDEMEANOR	ADMISSION	9/2/2016	0	0	9/9/2016	7
ESH	7424	CHELAN	FELONY	ADMISSION	9/6/2016	0	0	9/12/2016	6
ESH	7425	OKANOGAN	FELONY	ADMISSION	9/12/2016	0	.	9/15/2016	3
ESH	7426	ADAMS	FELONY	ADMISSION	9/19/2016	1	1	9/22/2016	3
ESH	7427	SPOKANE	FELONY	ADMISSION	9/20/2016	0	0	9/26/2016	6
ESH	7428	OKANOGAN	FELONY	ADMISSION	9/22/2016	1	1	9/27/2016	5
ESH	7429	YAKIMA	FELONY	ADMISSION	9/22/2016	0	0	9/28/2016	6
ESH	7430	YAKIMA	MISDEMEANOR	ADMISSION	9/27/2016	0	0	.	.
ESH	7545	BENTON	FELONY	FAX	9/29/2016	0	0	.	.
ESH	7568	DOUGLAS	MISDEMEANOR	FAX	8/29/2016	0	0	9/14/2016	16
ESH	7569	YAKIMA	FELONY	ADMISSION	9/14/2016	0	0	9/21/2016	7
ESH	7570	CHELAN	MISDEMEANOR	FAX	9/20/2016	0	0	.	.

ESH	7571	SPOKANE	FELONY	ADMISSION	9/27/2016
ESH	7572	PEND	MISDEMEANOR	FAX	9/28/2016	1	1	.	.
ESH	7573	SPOKANE	FELONY	FAX	9/28/2016	1	1	.	.
ESH	7574	FRANKLIN	FELONY	FAX	9/29/2016
ESH	7575	FRANKLIN	MISDEMEANOR	FAX	9/29/2016
ESH	7576	YAKIMA	MISDEMEANOR	FAX	9/29/2016	0	0	.	.
ESH	7577	OKANOGAN	FELONY	FAX	9/30/2016	0	0	.	.

Appendix B: Class Member--Restoration Information for September 2016

Hospital	Class Member	County	Offense	Completion Method or Incomplete	Order Signed Date	Number of days from signed order to:			
						Order Received	Discovery	Complete	Incomplete to End of Reporting Period
WSH	6923	KING	FELONY	BED OFFER	8/3/2016	0	0	36	.
WSH	6928	LEWIS	FELONY	BED OFFER	8/4/2016	1	1	49	.
WSH	6929	PIERCE	FELONY	BED OFFER	8/4/2016	1	1	39	.
WSH	6933	PIERCE	FELONY	BED OFFER	8/5/2016	0	0	39	.
WSH	6938	COWLITZ	FELONY	BED OFFER	8/9/2016	0	0	34	.
WSH	6940	COWLITZ	FELONY	BED OFFER	8/9/2016	0	0	34	.
WSH	6943	KITSAP	FELONY	BED OFFER	8/10/2016	1	1	36	.
WSH	6945	KING	MISDEMEANOR	BED OFFER	8/10/2016	0	0	22	.
WSH	6953	PIERCE	FELONY	BED OFFER	8/11/2016	1	1	39	.
WSH	6954	PIERCE	FELONY	BED OFFER	8/12/2016	0	0	32	.
WSH	6955	PIERCE	FELONY	BED OFFER	8/12/2016	0	0	34	.
WSH	6958	PIERCE	FELONY	BED OFFER	8/12/2016	3	17	33	.
WSH	6960	THURSTON	FELONY	BED OFFER	8/15/2016	3	3	37	.
WSH	6962	THURSTON	FELONY	BED OFFER	8/15/2016	8	8	37	.
WSH	6964	THURSTON	FELONY	BED OFFER	8/16/2016	0	0	17	.
WSH	6965	PIERCE	FELONY	BED OFFER	8/16/2016	2	2	.	45
WSH	6969	SNOHOMISH	FELONY	BED OFFER	8/18/2016	0	0	35	.

WSH	6972	WHATCOM	MISDEMEANOR	BED OFFER	8/18/2016	0	0	21	.
WSH	6973	PIERCE	MISDEMEANOR	BED OFFER	8/18/2016	4	4	14	.
WSH	6974	PIERCE	FELONY	BED OFFER	8/18/2016	0	0	36	.
WSH	6976	SNOHOMISH	FELONY	BED OFFER	8/18/2016	0	0	14	.
WSH	6977	THURSTON	MISDEMEANOR	BED OFFER	8/18/2016	1	1	32	.
WSH	6979	KING	FELONY	BED OFFER	8/22/2016	1	1	39	.
WSH	6981	PIERCE	FELONY	BED OFFER	8/22/2016	1	1	.	39
WSH	6985	CLARK	FELONY	BED OFFER	8/24/2016	1	1	.	37
WSH	6986	KING	FELONY	BED OFFER	8/24/2016	1	1	.	37
WSH	6988	PIERCE	MISDEMEANOR	BED OFFER	8/24/2016	0	0	20	.
WSH	6989	PIERCE	FELONY	BED OFFER	8/25/2016	1	1	29	.
WSH	6991	PIERCE	FELONY	BED OFFER	8/26/2016	3	3	11	.
WSH	6993	SNOHOMISH	FELONY	BED OFFER	8/26/2016	3	3	7	.
WSH	6994	PIERCE	FELONY	BED OFFER	8/26/2016	3	3	.	35
WSH	6997	KITSAP	MISDEMEANOR	BED OFFER	8/29/2016	0	0	.	32
WSH	6999	KITSAP	FELONY	BED OFFER	8/30/2016	1	1	.	31
WSH	7000	PIERCE	FELONY	BED OFFER	8/30/2016	1	1	.	31
WSH	7000	PIERCE	MISDEMEANOR	CANCELLED	8/30/2016	1	1	.	31
WSH	7001	SNOHOMISH	FELONY	BED OFFER	8/31/2016	0	0	12	.
WSH	7002	KING	FELONY	BED OFFER	8/31/2016	0	0	12	.
WSH	7003	KING	FELONY	INCOMPLETE	8/31/2016	1	1	.	30
WSH	7004	PIERCE	FELONY	BED OFFER	8/31/2016	0	0	.	30
WSH	7005	CLARK	FELONY	BED OFFER	8/31/2016	0	0	14	.
WSH	7006	KING	FELONY	BED OFFER	8/31/2016	0	0	15	.
WSH	7403	COWLITZ	FELONY	BED OFFER	9/6/2016	0	0	13	.
WSH	7431	COWLITZ	FELONY	BED OFFER	8/2/2016	31	31	48	.
WSH	7432	THURSTON	FELONY	BED OFFER	8/29/2016	9	9	17	.
WSH	7433	KITSAP	FELONY	BED OFFER	9/1/2016	5	5	13	.
WSH	7434	KING	FELONY	BED OFFER	9/1/2016	0	0	13	.
WSH	7435	WHATCOM	FELONY	BED OFFER	9/1/2016	0	0	12	.
WSH	7436	PIERCE	FELONY	BED OFFER	9/1/2016	1	1	.	29
WSH	7437	KITSAP	FELONY	BED OFFER	9/1/2016	0	0	22	.

WSH	7438	PIERCE	FELONY	INCOMPLETE	9/1/2016	1	1	.	29
WSH	7439	KING	FELONY	BED OFFER	9/1/2016	0	0	13	.
WSH	7440	PIERCE	FELONY	BED OFFER	9/1/2016	7	7	0	.
WSH	7441	COWLITZ	MISDEMEANOR	BED OFFER	9/1/2016	1	1	18	.
WSH	7442	SNOHOMISH	FELONY	BED OFFER	9/2/2016	0	0	10	.
WSH	7443	KING	MISDEMEANOR	BED OFFER	9/2/2016	0	0	19	.
WSH	7444	MASON	FELONY	BED OFFER	9/2/2016	4	4	7	.
WSH	7445	PIERCE	MISDEMEANOR	BED OFFER	9/2/2016	5	5	18	.
WSH	7446	GRAYS	FELONY	BED OFFER	9/6/2016	1	1	8	.
WSH	7447	PIERCE	FELONY	INCOMPLETE	9/6/2016	0	2	.	24
WSH	7448	KING	FELONY	BED OFFER	9/7/2016	0	0	22	.
WSH	7449	PIERCE	FELONY	BED OFFER	9/7/2016	1	1	0	.
WSH	7450	PIERCE	FELONY	BED OFFER	9/7/2016	1	1	7	.
WSH	7451	CLALLAM	MISDEMEANOR	BED OFFER	9/7/2016	0	0	9	.
WSH	7452	PIERCE	FELONY	BED OFFER	9/7/2016	1	1	.	23
WSH	7453	PIERCE	FELONY	BED OFFER	9/7/2016	0	0	.	23
WSH	7454	GRAYS	FELONY	BED OFFER	9/8/2016	0	0	0	.
WSH	7455	KING	FELONY	BED OFFER	9/8/2016	0	0	0	.
WSH	7456	PIERCE	FELONY	BED OFFER	9/9/2016	0	0	5	.
WSH	7457	KITSAP	GROSS MISD	BED OFFER	9/9/2016	7	7	.	21
WSH	7458	KING	MISDEMEANOR	CANCELLED	9/9/2016	0	0	13	.
WSH	7459	PIERCE	MISDEMEANOR	BED OFFER	9/9/2016	0	0	14	.
WSH	7460	PIERCE	FELONY	BED OFFER	9/9/2016	0	0	10	.
WSH	7461	SNOHOMISH	MISDEMEANOR	CANCELLED	9/9/2016	0	0	17	.
WSH	7462	THURSTON	FELONY	BED OFFER	9/12/2016	2	2	.	18
WSH	7463	PIERCE	FELONY	INCOMPLETE	9/12/2016	0	0	.	18
WSH	7464	THURSTON	FELONY	INCOMPLETE	9/12/2016	1	1	.	18
WSH	7465	PIERCE	MISDEMEANOR	BED OFFER	9/12/2016	0	0	11	.
WSH	7466	THURSTON	FELONY	BED OFFER	9/12/2016	0	0	15	.
WSH	7467	PACIFIC	FELONY	BED OFFER	9/12/2016	0	0	15	.
WSH	7468	THURSTON	FELONY	BED OFFER	9/12/2016	1	1	8	.
WSH	7469	KING	FELONY	BED OFFER	9/12/2016	0	0	15	.

WSH	7470	KITSAP	FELONY	INCOMPLETE	9/12/2016	0	0	.	18
WSH	7471	KING	FELONY	INCOMPLETE	9/13/2016	0	0	.	17
WSH	7472	THURSTON	FELONY	BED OFFER	9/13/2016	0	0	.	17
WSH	7473	KITSAP	MISDEMEANOR	BED OFFER	9/13/2016	0	0	9	.
WSH	7474	KITSAP	MISDEMEANOR	CANCELLED	9/13/2016	0	0	.	17
WSH	7475	KING	FELONY	INCOMPLETE	9/13/2016	0	0	.	17
WSH	7476	CLARK	FELONY	BED OFFER	9/14/2016	0	0	5	.
WSH	7478	PIERCE	FELONY	BED OFFER	9/14/2016	0	0	7	.
WSH	7479	JEFFERSON	MISDEMEANOR	BED OFFER	9/14/2016	0	0	13	.
WSH	7480	ISLAND	FELONY	BED OFFER	9/14/2016	1	1	0	.
WSH	7481	KING	FELONY	BED OFFER	9/14/2016	0	0	12	.
WSH	7482	KING	FELONY	BED OFFER	9/15/2016	0	0	12	.
WSH	7483	PIERCE	FELONY	INCOMPLETE	9/15/2016	4	4	.	15
WSH	7484	SNOHOMISH	FELONY	BED OFFER	9/15/2016	0	0	0	.
WSH	7485	WHATCOM	FELONY	INCOMPLETE	9/15/2016	0	0	.	15
WSH	7486	KING	MISDEMEANOR	BED OFFER	9/15/2016	0	0	15	.
WSH	7487	CLARK	FELONY	BED OFFER	9/15/2016	0	0	.	15
WSH	7488	KING	FELONY	INCOMPLETE	9/15/2016	0	0	.	15
WSH	7489	PIERCE	FELONY	INCOMPLETE	9/15/2016	0	0	.	15
WSH	7490	LEWIS	FELONY	INCOMPLETE	9/15/2016	4	4	.	15
WSH	7491	KING	MISDEMEANOR	BED OFFER	9/15/2016	0	0	.	15
WSH	7492	KING	FELONY	BED OFFER	9/15/2016	0	0	14	.
WSH	7493	THURSTON	MISDEMEANOR	BED OFFER	9/16/2016	11	11	.	14
WSH	7494	GRAYS	FELONY	INCOMPLETE	9/19/2016	0	0	.	11
WSH	7495	COWLITZ	FELONY	BED OFFER	9/20/2016	1	1	0	.
WSH	7496	PIERCE	FELONY	BED OFFER	9/20/2016	1	1	0	.
WSH	7497	KING	FELONY	INCOMPLETE	9/20/2016	0	0	.	10
WSH	7498	KITSAP	GROSS MISD	BED OFFER	9/20/2016	0	0	.	10
WSH	7499	CLARK	FELONY	INCOMPLETE	9/20/2016	0	0	.	10
WSH	7500	KING	FELONY	BED OFFER	9/21/2016	0	0	.	9
WSH	7501	LEWIS	FELONY	INCOMPLETE	9/21/2016	0	0	.	9
WSH	7502	CLARK	FELONY	BED OFFER	9/21/2016	0	0	0	.

WSH	7503	KING	MISDEMEANOR	BED OFFER	9/21/2016	0	0	.	9
WSH	7504	KING	MISDEMEANOR	BED OFFER	9/21/2016	0	0	.	9
WSH	7505	KING	FELONY	BED OFFER	9/21/2016	0	0	.	9
WSH	7506	KING	FELONY	BED OFFER	9/21/2016	0	0	0	.
WSH	7507	PIERCE	FELONY	INCOMPLETE	9/21/2016	0	0	.	9
WSH	7508	WHATCOM	FELONY	BED OFFER	9/22/2016	0	0	.	8
WSH	7509	THURSTON	FELONY	BED OFFER	9/22/2016	0	0	.	8
WSH	7510	KITSAP	FELONY	BED OFFER	9/22/2016	1	1	0	.
WSH	7511	MASON	GROSS MISD	BED OFFER	9/22/2016	0	0	.	8
WSH	7512	SKAGIT	FELONY	INCOMPLETE	9/22/2016	0	0	.	8
WSH	7513	PIERCE	FELONY	INCOMPLETE	9/22/2016	4	4	.	8
WSH	7515	GRAYS	FELONY	BED OFFER	9/23/2016	3	3	.	7
WSH	7516	THURSTON	FELONY	INCOMPLETE	9/26/2016	0	0	.	4
WSH	7517	PIERCE	FELONY	INCOMPLETE	9/26/2016	0	0	.	4
WSH	7518	KING	FELONY	BED OFFER	9/26/2016	0	0	0	.
WSH	7519	KITSAP	MISDEMEANOR	INCOMPLETE	9/27/2016	0	0	.	3
WSH	7520	KING	MISDEMEANOR	BED OFFER	9/27/2016	0	0	.	3
WSH	7521	KING	MISDEMEANOR	INCOMPLETE	9/28/2016	0	0	.	2
WSH	7522	PIERCE	FELONY	INCOMPLETE	9/28/2016	1	1	.	2
WSH	7523	PIERCE	FELONY	BED OFFER	9/28/2016	0	0	.	2
WSH	7524	KING	FELONY	INCOMPLETE	9/28/2016	0	0	.	2
WSH	7578	PIERCE	FELONY	INCOMPLETE	9/12/2016	31	31	.	18
WSH	7579	KING	MISDEMEANOR	BED OFFER	9/21/2016	1	1	.	9
WSH	7580	KITSAP	FELONY	BED OFFER	9/23/2016	19	19	.	7
WSH	7581	THURSTON	MISDEMEANOR	INCOMPLETE	9/27/2016	15	15	.	3
WSH	7582	THURSTON	FELONY	INCOMPLETE	9/28/2016	0	0	.	2
WSH	7583	CLARK	FELONY	BED OFFER	9/29/2016	1	1	.	1
WSH	7584	PIERCE	FELONY	INCOMPLETE	9/29/2016	1	1	.	1
WSH	7585	KITSAP	FELONY	BED OFFER	9/29/2016	0	0	.	1
WSH	7586	SNOHOMISH	FELONY	CANCELLED	9/29/2016	0	0	.	1
WSH	7587	KING	GROSS MISD	BED OFFER	9/29/2016	0	0	.	1
WSH	7588	KITSAP	FELONY	BED OFFER	9/30/2016	4	4	0	.

WSH	7589	KITSAP	FELONY	BED OFFER	9/30/2016	4	4	.	0
WSH	7590	KING	FELONY	INCOMPLETE	9/30/2016	0	0	.	0
ESH	7525	GRANT	FELONY	ADMISSION	9/1/2016	0	0	6	.
ESH	7526	OKANOGAN	FELONY	ADMISSION	9/1/2016	0	0	5	.
ESH	7527	SPOKANE	MISDEMEANOR	ADMISSION	9/1/2016	0	0	8	.
ESH	7528	YAKIMA	FELONY	ADMISSION	9/6/2016	0	0	0	.
ESH	7529	YAKIMA	MISDEMEANOR	ADMISSION	9/6/2016	0	0	7	.
ESH	7530	SPOKANE	FELONY	ADMISSION	9/7/2016	1	1	5	.
ESH	7531	YAKIMA	FELONY	ADMISSION	9/7/2016	0	0	6	.
ESH	7532	YAKIMA	FELONY	ADMISSION	9/9/2016	0	0	0	.
ESH	7533	SPOKANE	FELONY	ADMISSION	9/9/2016	3	3	7	.
ESH	7534	CHELAN	FELONY	ADMISSION	9/14/2016	0	0	0	.
ESH	7535	COLUMBIA	FELONY	ADMISSION	9/14/2016	1	1	1	.
ESH	7536	FRANKLIN	FELONY	ADMISSION	9/15/2016	0	0	4	.
ESH	7537	YAKIMA	FELONY	ADMISSION	9/15/2016	0	0	6	.
ESH	7538	YAKIMA	FELONY	ADMISSION	9/16/2016	0	0	5	.
ESH	7539	SPOKANE	FELONY	ADMISSION	9/19/2016	0	0	4	.
ESH	7540	YAKIMA	FELONY	ADMISSION	9/20/2016	0	0	2	.
ESH	7541	SPOKANE	FELONY	ADMISSION	9/21/2016	0	0	5	.
ESH	7542	FRANKLIN	MISDEMEANOR	ADMISSION	9/22/2016	0	0	6	.
ESH	7543	CHELAN	FELONY	ADMISSION	9/28/2016	0	0	.	2
ESH	7544	SPOKANE	FELONY	ADMISSION	9/29/2016	0	0	.	1
ESH	7592	OKANOGAN	FELONY	ADMISSION	9/30/2016	0	0	0	.

Appendix C: Class Member--Restoration Information for Maple Lane September 2016

Hospital	Class Member	County	Offense	Completion Method or Incomplete	Order Signed Date	Number of days from signed order to:			
						Received	Discovery	Complete	Incomplete to End of Reporting Period
WSH	7495	COWLITZ	FELONY	BED OFFER	9/20/2016	1	1	0	.
WSH	7588	KITSAP	FELONY	BED OFFER	9/30/2016	4	4	0	.
WSH	7444	MASON	FELONY	BED OFFER	9/2/2016	4	4	7	.
WSH	7451	CLALLAM	MISDEMEANOR	BED OFFER	9/7/2016	0	0	9	.
WSH	7442	SNOHOMISH	FELONY	BED OFFER	9/2/2016	0	0	10	.
WSH	7435	WHATCOM	FELONY	BED OFFER	9/1/2016	0	0	12	.
WSH	7481	KING	FELONY	BED OFFER	9/14/2016	0	0	12	.
WSH	7403	COWLITZ	FELONY	BED OFFER	9/6/2016	0	0	13	.
WSH	7439	KING	FELONY	BED OFFER	9/1/2016	0	0	13	.
WSH	7479	JEFFERSON	MISDEMEANOR	BED OFFER	9/14/2016	0	0	13	.
WSH	7433	KITSAP	FELONY	BED OFFER	9/1/2016	5	5	13	.
WSH	7005	CLARK	FELONY	BED OFFER	8/31/2016	0	0	14	.
WSH	7006	KING	FELONY	BED OFFER	8/31/2016	0	0	15	.
WSH	7467	PACIFIC	FELONY	BED OFFER	9/12/2016	0	0	15	.
WSH	7441	COWLITZ	MISDEMEANOR	BED OFFER	9/1/2016	1	1	18	.
WSH	7437	KITSAP	FELONY	BED OFFER	9/1/2016	0	0	22	.
WSH	7587	KING	GROSS MISD	BED OFFER	9/29/2016	0	0	.	1
WSH	7515	GRAYS	FELONY	BED OFFER	9/23/2016	3	3	.	7
WSH	7508	WHATCOM	FELONY	BED OFFER	9/22/2016	0	0	.	8
WSH	7511	MASON	GROSS MISD	BED OFFER	9/22/2016	0	0	.	8
WSH	7504	KING	MISDEMEANOR	BED OFFER	9/21/2016	0	0	.	9
WSH	7493	THURSTON	MISDEMEANOR	BED OFFER	9/16/2016	11	11	.	14
WSH	7491	KING	MISDEMEANOR	BED OFFER	9/15/2016	0	0	.	15
WSH	7457	KITSAP	GROSS MISD	BED OFFER	9/9/2016	7	7	.	21

Appendix D: Class Member--Restoration Information for Yakima September 2016

Hospital	Class Member	County	Offense	Completion Method or Incomplete	Order Signed Date	Number of days from signed order to:			
						Received	Discovery	Complete	Incomplete to End of Reporting Period
WSH	7502	CLARK	FELONY	BED OFFER	9/21/2016	0	0	0	.
WSH	7473	KITSAP	MISDEMEANOR	BED OFFER	9/13/2016	0	0	9	.
WSH	7002	KING	FELONY	BED OFFER	8/31/2016	0	0	12	.
WSH	7482	KING	FELONY	BED OFFER	9/15/2016	0	0	12	.
WSH	7434	KING	FELONY	BED OFFER	9/1/2016	0	0	13	.
WSH	6976	SNOHOMISH	FELONY	BED OFFER	8/18/2016	0	0	14	.
WSH	7492	KING	FELONY	BED OFFER	9/15/2016	0	0	14	.
WSH	7469	KING	FELONY	BED OFFER	9/12/2016	0	0	15	.
WSH	7448	KING	FELONY	BED OFFER	9/7/2016	0	0	22	.
WSH	7589	KITSAP	FELONY	BED OFFER	9/30/2016	4	4	.	0
WSH	7500	KING	FELONY	BED OFFER	9/21/2016	0	0	.	9
WSH	7505	KING	FELONY	BED OFFER	9/21/2016	0	0	.	9
WSH	7487	CLARK	FELONY	BED OFFER	9/15/2016	0	0	.	15
WSH	7472	THURSTON	FELONY	BED OFFER	9/13/2016	0	0	.	17
WSH	7462	THURSTON	FELONY	BED OFFER	9/12/2016	2	2	.	18

Appendix E: Class Member--Evaluation Information for October 2016

Hospital	Class Member	County	Offense	Completion Method or Incomplete	Order Signed Date	Number of Days from signed order to:			
						Order Received	Discovery	Complete	Incomplete to End of Reporting
WSH	6784	KING	FELONY	FAXED	8/18/2016	0	0	46	.
WSH	6822	KING	FELONY	BED OFFER	8/25/2016	1	1	48	.
WSH	7018	PIERCE	FELONY	FAXED	8/17/2016	35	35	48	.

WSH	7150	WHATCOM	FELONY	FAXED	9/9/2016	0	0	33	.
WSH	7165	KING	MISDEMEANOR	FAXED	9/13/2016	0	0	20	.
WSH	7170	KING	FELONY	FAXED	9/13/2016	1	1	24	.
WSH	7175	KING	FELONY	FAXED	9/14/2016	0	0	30	.
WSH	7176	KING	FELONY	FAXED	9/15/2016	0	0	33	.
WSH	7177	PIERCE	FELONY	FAXED	9/15/2016	4	5	25	.
WSH	7178	KING	FELONY	FAXED	9/15/2016	0	1	22	.
WSH	7181	KING	FELONY	TIC	9/15/2016	0	1	26	.
WSH	7183	KING	MISDEMEANOR	FAXED	9/15/2016	0	0	19	.
WSH	7187	KING	FELONY	FAXED	9/16/2016	3	3	40	.
WSH	7192	WHATCOM	MISDEMEANOR	FAXED	9/16/2016	3	3	26	.
WSH	7194	WHATCOM	FELONY	FAXED	9/16/2016	0	0	28	.
WSH	7197	KING	MISDEMEANOR	FAXED	9/19/2016	0	0	14	.
WSH	7198	SNOHOMISH	FELONY	FAXED	9/19/2016	1	1	15	.
WSH	7201	CLARK	FELONY	FAXED	9/19/2016	0	0	15	.
WSH	7202	CLARK	MISDEMEANOR	FAXED	9/19/2016	0	0	14	.
WSH	7205	KING	MISDEMEANOR	FAXED	9/19/2016	0	0	16	.
WSH	7206	SNOHOMISH	FELONY	FAXED	9/19/2016	0	0	17	.
WSH	7207	KING	FELONY	CRIC	9/19/2016	1	1	24	.
WSH	7208	CLARK	MISDEMEANOR	FAXED	9/19/2016	0	4	15	.
WSH	7209	KING	FELONY	TIC	9/19/2016	0	0	21	.
WSH	7210	KING	MISDEMEANOR	FAXED	9/20/2016	3	3	14	.
WSH	7212	KING	MISDEMEANOR	WITHDRAW	9/20/2016	1	1	14	.
WSH	7213	KING	MISDEMEANOR	FAXED	9/20/2016	0	0	14	.
WSH	7214	KING	MISDEMEANOR	FAXED	9/20/2016	3	3	13	.
WSH	7215	KING	FELONY	INCOMPLETE	9/20/2016	0	0	.	41
WSH	7217	COWLITZ	FELONY	FAXED	9/20/2016	0	0	13	.
WSH	7219	KING	MISDEMEANOR	FAXED	9/20/2016	0	0	14	.
WSH	7220	SNOHOMISH	FELONY	FAXED	9/20/2016	0	3	17	.
WSH	7222	KING	MISDEMEANOR	TIC	9/21/2016	0	0	14	.
WSH	7224	KING	MISDEMEANOR	FAXED	9/21/2016	0	0	14	.
WSH	7225	PIERCE	MISDEMEANOR	FAXED	9/21/2016	0	0	12	.

WSH	7227	KING	MISDEMEANOR	FAXED	9/21/2016	0	0	15	.
WSH	7229	GRAYS	FELONY	FAXED	9/21/2016	0	0	13	.
WSH	7230	CLARK	MISDEMEANOR	FAXED	9/21/2016	0	0	12	.
WSH	7234	SNOHOMISH	MISDEMEANOR	FAXED	9/21/2016	0	0	13	.
WSH	7235	THURSTON	MISDEMEANOR	TIC	9/21/2016	0	0	14	.
WSH	7238	SNOHOMISH	FELONY	TIC	9/21/2016	0	0	14	.
WSH	7239	THURSTON	FELONY	FAXED	9/21/2016	0	0	14	.
WSH	7241	GRAYS	MISDEMEANOR	FAXED	9/22/2016	0	0	13	.
WSH	7242	SNOHOMISH	FELONY	FAXED	9/22/2016	0	0	20	.
WSH	7243	KING	MISDEMEANOR	FAXED	9/22/2016	0	0	13	.
WSH	7244	KING	FELONY	FAXED	9/22/2016	1	1	26	.
WSH	7245	KING	MISDEMEANOR	FAXED	9/22/2016	0	0	18	.
WSH	7246	SNOHOMISH	MISDEMEANOR	FAXED	9/22/2016	0	0	14	.
WSH	7248	KING	MISDEMEANOR	FAXED	9/22/2016	0	0	19	.
WSH	7250	WHATCOM	FELONY	FAXED	9/22/2016	0	1	22	.
WSH	7251	COWLITZ	FELONY	FAXED	9/22/2016	0	0	12	.
WSH	7252	KING	MISDEMEANOR	FAXED	9/22/2016	0	0	18	.
WSH	7253	KING	FELONY	FAXED	9/22/2016	1	1	29	.
WSH	7254	SNOHOMISH	MISDEMEANOR	FAXED	9/22/2016	0	0	22	.
WSH	7255	SNOHOMISH	FELONY	TIC	9/22/2016	1	1	19	.
WSH	7256	SKAGIT	FELONY	FAXED	9/22/2016	1	1	20	.
WSH	7258	CLARK	MISDEMEANOR	FAXED	9/22/2016	1	1	12	.
WSH	7259	MASON	MISDEMEANOR	FAXED	9/22/2016	0	0	13	.
WSH	7260	WHATCOM	FELONY	FAXED	9/22/2016	0	0	18	.
WSH	7261	WHATCOM	FELONY	FAXED	9/22/2016	0	0	15	.
WSH	7262	SKAGIT	FELONY	FAXED	9/22/2016	1	1	20	.
WSH	7263	WHATCOM	MISDEMEANOR	FAXED	9/23/2016	0	0	.	38
WSH	7264	KITSAP	FELONY	FAXED	9/23/2016	4	4	11	.
WSH	7265	CLALLAM	FELONY	FAXED	9/23/2016	3	3	10	.
WSH	7266	CLARK	FELONY	FAXED	9/23/2016	0	0	10	.
WSH	7270	CLARK	FELONY	FAXED	9/23/2016	0	0	31	.
WSH	7271	KING	MISDEMEANOR	FAXED	9/23/2016	0	0	10	.

WSH	7272	KING	MISDEMEANOR	FAXED	9/23/2016	0	0	13	.
WSH	7274	KITSAP	MISDEMEANOR	FAXED	9/23/2016	4	4	12	.
WSH	7275	PIERCE	MISDEMEANOR	WITHDRAWN	9/26/2016	0	0	9	.
WSH	7276	KING	MISDEMEANOR	FAXED	9/26/2016	0	0	14	.
WSH	7278	CLALLAM	FELONY	FAXED	9/26/2016	1	1	7	.
WSH	7280	CLALLAM	MISDEMEANOR	FAXED	9/26/2016	0	0	10	.
WSH	7281	KING	FELONY	WITHDRAWN	9/26/2016	0	0	16	.
WSH	7282	CLALLAM	MISDEMEANOR	FAXED	9/26/2016	0	0	10	.
WSH	7283	KING	MISDEMEANOR	FAXED	9/26/2016	1	1	15	.
WSH	7284	KING	MISDEMEANOR	WITHDRAWN	9/27/2016	1	1	7	.
WSH	7285	KING	MISDEMEANOR	FAXED	9/27/2016	0	0	34	.
WSH	7286	LEWIS	FELONY	FAXED	9/27/2016	0	0	14	.
WSH	7287	SNOHOMISH	FELONY	FAXED	9/27/2016	0	0	16	.
WSH	7289	KING	MISDEMEANOR	FAXED	9/27/2016	1	1	21	.
WSH	7290	KITSAP	MISDEMEANOR	FAXED	9/27/2016	0	0	7	.
WSH	7291	MASON	MISDEMEANOR	FAXED	9/27/2016	0	0	15	.
WSH	7292	CLARK	MISDEMEANOR	FAXED	9/27/2016	0	0	7	.
WSH	7293	KITSAP	FELONY	FAXED	9/27/2016	0	0	8	.
WSH	7294	LEWIS	MISDEMEANOR	WITHDRAWN	9/27/2016	0	0	10	.
WSH	7295	THURSTON	FELONY	FAXED	9/27/2016	0	0	14	.
WSH	7296	SNOHOMISH	MISDEMEANOR	FAXED	9/28/2016	0	1	22	.
WSH	7297	KING	MISDEMEANOR	FAXED	9/28/2016	0	0	9	.
WSH	7298	KING	MISDEMEANOR	FAXED	9/28/2016	0	1	14	.
WSH	7299	SNOHOMISH	MISDEMEANOR	WITHDRAWN	9/28/2016	0	0	16	.
WSH	7300	GRAYS	MISDEMEANOR	FAXED	9/28/2016	0	0	7	.
WSH	7302	THURSTON	FELONY	FAXED	9/28/2016	0	0	7	.
WSH	7303	KING	MISDEMEANOR	FAXED	9/28/2016	0	0	19	.
WSH	7304	PIERCE	MISDEMEANOR	FAXED	9/28/2016	0	0	14	.
WSH	7305	SNOHOMISH	MISDEMEANOR	FAXED	9/28/2016	0	0	21	.
WSH	7306	KING	MISDEMEANOR	FAXED	9/28/2016	0	0	14	.
WSH	7307	SNOHOMISH	FELONY	FAXED	9/29/2016	0	0	32	.
WSH	7308	KING	MISDEMEANOR	WITHDRAWN	9/29/2016	0	0	6	.

WSH	7309	MASON	MISDEMEANOR	FAXED	9/29/2016	0	0	8	.
WSH	7310	SKAGIT	FELONY	FAXED	9/29/2016	0	0	14	.
WSH	7311	LEWIS	FELONY	FAXED	9/29/2016	0	0	8	.
WSH	7312	WHATCOM	FELONY	FAXED	9/29/2016	0	0	25	.
WSH	7312	WHATCOM	MISDEMEANOR	FAXED	9/29/2016	0	0	25	.
WSH	7314	SNOHOMISH	MISDEMEANOR	WITHDRAWN	9/29/2016	0	0	14	.
WSH	7315	MASON	FELONY	FAXED	9/29/2016	0	0	11	.
WSH	7316	KING	MISDEMEANOR	FAXED	9/29/2016	0	0	18	.
WSH	7317	PIERCE	MISDEMEANOR	FAXED	9/30/2016	0	0	11	.
WSH	7318	KING	MISDEMEANOR	FAXED	9/30/2016	0	0	5	.
WSH	7319	KING	MISDEMEANOR	FAXED	9/30/2016	0	0	18	.
WSH	7320	JEFFERSON	MISDEMEANOR	FAXED	9/30/2016	0	0	13	.
WSH	7321	KING	MISDEMEANOR	FAXED	9/30/2016	0	0	17	.
WSH	7402	KING	FELONY	CANCELLED	9/2/2016	24	24	34	.
WSH	7404	KING	FELONY	BED OFFER	9/6/2016	0	0	27	.
WSH	7405	THURSTON	FELONY	BED OFFER	9/7/2016	0	0	26	.
WSH	7410	KING	MISDEMEANOR	BED OFFER	9/14/2016	1	1	21	.
WSH	7411	PIERCE	FELONY	BED OFFER	9/15/2016	0	0	21	.
WSH	7412	PIERCE	MISDEMEANOR	BED OFFER	9/16/2016	3	3	33	.
WSH	7413	PIERCE	FELONY	CANCELLED	9/16/2016	6	6	21	.
WSH	7414	PIERCE	FELONY	BED OFFER	9/16/2016	3	3	25	.
WSH	7415	PIERCE	FELONY	BED OFFER	9/16/2016	5	5	24	.
WSH	7416	KING	FELONY	BED OFFER	9/19/2016	0	0	28	.
WSH	7417	PIERCE	FELONY	BED OFFER	9/22/2016	1	1	21	.
WSH	7418	PIERCE	FELONY	BED OFFER	9/27/2016	0	0	22	.
WSH	7419	PIERCE	FELONY	BED OFFER	9/28/2016	1	1	22	.
WSH	7546	GRAYS	FELONY	FAXED	9/19/2016	17	17	22	.
WSH	7547	COWLITZ	FELONY	FAXED	9/23/2016	25	25	32	.
WSH	7548	COWLITZ	FELONY	FAXED	9/27/2016	1	1	9	.
WSH	7550	KING	FELONY	FAXED	9/28/2016	1	1	21	.
WSH	7551	THURSTON	FELONY	FAXED	9/28/2016	1	1	23	.
WSH	7552	PIERCE	MISDEMEANOR	FAXED	9/28/2016	0	2	9	.

WSH	7553	WHATCOM	FELONY	BED OFFER	9/29/2016	0	0	21	.
WSH	7554	KING	FELONY	INCOMPLETE	9/29/2016	0	0	.	32
WSH	7555	WHATCOM	FELONY	FAXED	9/29/2016	0	0	22	.
WSH	7556	KING	FELONY	FAXED	9/29/2016	0	0	13	.
WSH	7557	GRAYS	MISDEMEANOR	FAXED	9/29/2016	0	0	6	.
WSH	7558	SKAGIT	FELONY	FAXED	9/29/2016	0	0	32	.
WSH	7559	MASON	MISDEMEANOR	FAXED	9/29/2016	0	5	11	.
WSH	7560	CLARK	FELONY	FAXED	9/30/2016	0	0	7	.
WSH	7561	KING	MISDEMEANOR	FAXED	9/30/2016	4	4	31	.
WSH	7562	KITSAP	MISDEMEANOR	FAXED	9/30/2016	0	0	12	.
WSH	7563	KING	MISDEMEANOR	FAXED	9/30/2016	0	0	13	.
WSH	7564	CLARK	FELONY	FAXED	9/30/2016	0	0	6	.
WSH	7565	KING	MISDEMEANOR	FAXED	9/30/2016	0	11	7	.
WSH	7566	PIERCE	MISDEMEANOR	FAXED	9/30/2016	0	0	11	.
WSH	7567	PIERCE	FELONY	FAXED	9/30/2016	3	3	21	.
WSH	7593	PIERCE	MISDEMEANOR	FAXED	10/1/2016	3	3	11	.
WSH	7594	PIERCE	MISDEMEANOR	WITHDRAWN	10/3/2016	0	0	2	.
WSH	7595	CLALLAM	MISDEMEANOR	FAXED	10/3/2016	0	0	4	.
WSH	7596	KING	MISDEMEANOR	WITHDRAWN	10/3/2016	0	0	8	.
WSH	7597	PIERCE	MISDEMEANOR	FAXED	10/3/2016	0	0	10	.
WSH	7598	CLARK	MISDEMEANOR	FAXED	10/3/2016	1	1	11	.
WSH	7599	SNOHOMISH	FELONY	FAXED	10/3/2016	0	0	16	.
WSH	7600	SNOHOMISH	FELONY	FAXED	10/3/2016	1	1	17	.
WSH	7601	SNOHOMISH	FELONY	FAXED	10/3/2016	0	0	18	.
WSH	7603	GRAYS	FELONY	FAXED	10/3/2016	0	3	18	.
WSH	7604	KING	FELONY	FAXED	10/3/2016	1	1	.	28
WSH	7605	KITSAP	FELONY	FAXED	10/4/2016	0	0	7	.
WSH	7606	THURSTON	FELONY	FAXED	10/4/2016	0	0	7	.
WSH	7607	KITSAP	MISDEMEANOR	FAXED	10/4/2016	0	0	8	.
WSH	7608	THURSTON	MISDEMEANOR	FAXED	10/4/2016	0	0	8	.
WSH	7609	KITSAP	MISDEMEANOR	FAXED	10/4/2016	0	0	9	.
WSH	7610	KING	FELONY	FAXED	10/4/2016	0	0	10	.

WSH	7611	SNOHOMISH	MISDEMEANOR	FAXED	10/4/2016	0	3	10	.
WSH	7613	KING	MISDEMEANOR	FAXED	10/4/2016	0	0	14	.
WSH	7614	KING	MISDEMEANOR	FAXED	10/4/2016	0	1	16	.
WSH	7615	PIERCE	FELONY	BED OFFER	10/4/2016	0	0	29	.
WSH	7616	KING	FELONY	BED OFFER	10/5/2016	0	0	2	.
WSH	7617	GRAYS	MISDEMEANOR	FAXED	10/5/2016	0	0	7	.
WSH	7618	GRAYS	MISDEMEANOR	FAXED	10/5/2016	0	0	7	.
WSH	7619	CLARK	FELONY	FAXED	10/5/2016	0	0	7	.
WSH	7620	KING	FELONY	CANCELLED	10/5/2016	0	0	7	.
WSH	7621	KING	MISDEMEANOR	FAXED	10/5/2016	0	0	9	.
WSH	7622	KING	MISDEMEANOR	FAXED	10/5/2016	0	0	9	.
WSH	7624	KING	MISDEMEANOR	WITHDRAWN	10/5/2016	0	0	12	.
WSH	7625	CLARK	FELONY	FAXED	10/5/2016	0	0	13	.
WSH	7626	KING	MISDEMEANOR	FAXED	10/5/2016	1	2	14	.
WSH	7627	THURSTON	FELONY	INCOMPLETE	10/5/2016	0	0	.	26
WSH	7628	PIERCE	FELONY	INCOMPLETE	10/5/2016	1	1	.	26
WSH	7629	KING	MISDEMEANOR	FAXED	10/6/2016	1	1	6	.
WSH	7630	KING	MISDEMEANOR	FAXED	10/6/2016	0	0	7	.
WSH	7631	KING	MISDEMEANOR	FAXED	10/6/2016	0	1	13	.
WSH	7632	WHATCOM	FELONY	FAXED	10/6/2016	0	0	13	.
WSH	7634	KING	MISDEMEANOR	WITHDRAWN	10/6/2016	0	0	14	.
WSH	7635	WHATCOM	MISDEMEANOR	FAXED	10/6/2016	0	0	18	.
WSH	7636	KING	MISDEMEANOR	FAXED	10/6/2016	1	5	18	.
WSH	7637	KING	MISDEMEANOR	FAXED	10/6/2016	0	0	19	.
WSH	7638	KING	MISDEMEANOR	BED OFFER	10/6/2016	0	0	21	.
WSH	7639	WHATCOM	FELONY	INCOMPLETE	10/6/2016	0	0	.	25
WSH	7640	KING	MISDEMEANOR	WITHDRAWN	10/7/2016	0	3	5	.
WSH	7641	PIERCE	MISDEMEANOR	TIC	10/7/2016	0	3	6	.
WSH	7642	PIERCE	MISDEMEANOR	FAXED	10/7/2016	0	0	6	.
WSH	7644	KING	FELONY	FAXED	10/7/2016	0	0	7	.
WSH	7645	KING	MISDEMEANOR	FAXED	10/7/2016	0	0	9	.
WSH	7646	KING	FELONY	WITHDRAWN	10/7/2016	0	0	11	.

WSH	7647	KING	MISDEMEANOR	FAXED	10/7/2016	0	0	12	.
WSH	7648	CLARK	FELONY	FAXED	10/7/2016	0	0	13	.
WSH	7649	KING	MISDEMEANOR	FAXED	10/7/2016	0	0	19	.
WSH	7650	WHATCOM	FELONY	FAXED	10/7/2016	0	0	21	.
WSH	7651	THURSTON	MISDEMEANOR	BED OFFER	10/7/2016	0	0	21	.
WSH	7652	SNOHOMISH	FELONY	INCOMPLETE	10/7/2016	0	0	.	24
WSH	7653	KING	MISDEMEANOR	FAXED	10/8/2016	0	2	19	.
WSH	7655	KING	MISDEMEANOR	FAXED	10/8/2016	0	2	23	.
WSH	7656	KING	FELONY	WITHDRAWN	10/10/2016	0	0	2	.
WSH	7657	PIERCE	MISDEMEANOR	WITHDRAWN	10/10/2016	0	0	2	.
WSH	7658	KING	MISDEMEANOR	WITHDRAWN	10/10/2016	0	2	4	.
WSH	7659	KING	MISDEMEANOR	FAXED	10/10/2016	0	0	4	.
WSH	7660	PIERCE	MISDEMEANOR	FAXED	10/10/2016	0	0	4	.
WSH	7661	KING	MISDEMEANOR	FAXED	10/10/2016	0	0	6	.
WSH	7662	KING	FELONY	FAXED	10/10/2016	0	0	9	.
WSH	7663	KING	FELONY	FAXED	10/10/2016	0	0	11	.
WSH	7665	KING	MISDEMEANOR	FAXED	10/10/2016	0	2	15	.
WSH	7666	KING	FELONY	INCOMPLETE	10/10/2016	2	2	.	21
WSH	7667	KITSAP	MISDEMEANOR	FAXED	10/11/2016	0	0	7	.
WSH	7668	PIERCE	MISDEMEANOR	FAXED	10/11/2016	0	0	7	.
WSH	7669	KING	MISDEMEANOR	FAXED	10/11/2016	0	0	9	.
WSH	7670	KING	FELONY	FAXED	10/11/2016	1	1	10	.
WSH	7671	CLARK	MISDEMEANOR	FAXED	10/11/2016	0	0	10	.
WSH	7672	KING	FELONY	FAXED	10/11/2016	0	0	15	.
WSH	7673	KING	MISDEMEANOR	FAXED	10/11/2016	0	0	17	.
WSH	7675	KING	FELONY	INCOMPLETE	10/11/2016	0	0	.	20
WSH	7676	KING	MISDEMEANOR	WITHDRAWN	10/12/2016	0	0	2	.
WSH	7677	LEWIS	MISDEMEANOR	FAXED	10/12/2016	1	1	5	.
WSH	7678	KING	FELONY	FAXED	10/12/2016	1	1	7	.
WSH	7679	PIERCE	MISDEMEANOR	FAXED	10/12/2016	0	0	12	.
WSH	7680	KING	MISDEMEANOR	FAXED	10/12/2016	2	2	13	.
WSH	7681	SNOHOMISH	MISDEMEANOR	FAXED	10/12/2016	0	0	13	.

WSH	7682	CLARK	FELONY	FAXED	10/12/2016	1	1	13	.
WSH	7683	LEWIS	MISDEMEANOR	FAXED	10/12/2016	1	1	13	.
WSH	7684	CLARK	MISDEMEANOR	FAXED	10/12/2016	0	0	19	.
WSH	7686	KING	FELONY	INCOMPLETE	10/12/2016	0	0	.	19
WSH	7687	CLARK	FELONY	INCOMPLETE	10/12/2016	0	0	.	19
WSH	7688	KING	FELONY	INCOMPLETE	10/12/2016	1	1	.	19
WSH	7689	PIERCE	MISDEMEANOR	WITHDRAWN	10/13/2016	0	0	4	.
WSH	7690	KING	MISDEMEANOR	FAXED	10/13/2016	0	0	6	.
WSH	7691	KING	MISDEMEANOR	FAXED	10/13/2016	0	0	7	.
WSH	7692	KING	MISDEMEANOR	WITHDRAWN	10/13/2016	0	0	7	.
WSH	7693	COWLITZ	FELONY	FAXED	10/13/2016	0	0	7	.
WSH	7694	GRAYS	MISDEMEANOR	FAXED	10/13/2016	1	1	7	.
WSH	7696	PIERCE	MISDEMEANOR	FAXED	10/13/2016	0	0	8	.
WSH	7697	KING	FELONY	FAXED	10/13/2016	0	0	12	.
WSH	7698	CLARK	FELONY	FAXED	10/13/2016	0	0	13	.
WSH	7699	SNOHOMISH	MISDEMEANOR	FAXED	10/13/2016	0	0	14	.
WSH	7700	SNOHOMISH	FELONY	FAXED	10/13/2016	0	0	15	.
WSH	7701	WHATCOM	FELONY	FAXED	10/13/2016	1	1	.	18
WSH	7702	WHATCOM	FELONY	INCOMPLETE	10/13/2016	0	4	.	18
WSH	7703	KING	MISDEMEANOR	INCOMPLETE	10/13/2016	0	0	.	18
WSH	7704	KING	FELONY	INCOMPLETE	10/13/2016	0	0	.	18
WSH	7706	0	FELONY	INCOMPLETE	10/13/2016	0	0	.	18
WSH	7707	KING	FELONY	INCOMPLETE	10/13/2016	0	0	.	18
WSH	7708	PIERCE	MISDEMEANOR	WITHDRAWN	10/14/2016	0	0	5	.
WSH	7709	KING	MISDEMEANOR	FAXED	10/14/2016	0	0	5	.
WSH	7710	KITSAP	MISDEMEANOR	FAXED	10/14/2016	0	0	6	.
WSH	7711	KITSAP	MISDEMEANOR	FAXED	10/14/2016	0	0	7	.
WSH	7712	KING	MISDEMEANOR	FAXED	10/14/2016	0	0	7	.
WSH	7713	CLARK	MISDEMEANOR	WITHDRAWN	10/14/2016	0	0	7	.
WSH	7714	SNOHOMISH	MISDEMEANOR	FAXED	10/14/2016	0	0	14	.
WSH	7715	KING	FELONY	INCOMPLETE	10/14/2016	3	3	.	17
WSH	7717	KING	FELONY	INCOMPLETE	10/14/2016	3	3	.	17

WSH	7718	KING	MISDEMEANOR	WITHDRAWN	10/15/2016	0	2	4	.
WSH	7719	PIERCE	MISDEMEANOR	WITHDRAWN	10/17/2016	0	0	3	.
WSH	7720	CLARK	MISDEMEANOR	FAXED	10/17/2016	0	0	4	.
WSH	7721	CLARK	MISDEMEANOR	FAXED	10/17/2016	0	0	7	.
WSH	7722	SNOHOMISH	MISDEMEANOR	FAXED	10/17/2016	1	1	7	.
WSH	7723	PIERCE	MISDEMEANOR	FAXED	10/17/2016	4	4	8	.
WSH	7724	KITSAP	FELONY	FAXED	10/17/2016	0	0	8	.
WSH	7725	KING	MISDEMEANOR	FAXED	10/17/2016	0	0	9	.
WSH	7727	CLALLAM	FELONY	FAXED	10/17/2016	0	1	10	.
WSH	7728	KING	MISDEMEANOR	FAXED	10/17/2016	0	0	10	.
WSH	7729	KING	FELONY	TIC	10/17/2016	0	0	14	.
WSH	7730	KING	MISDEMEANOR	INCOMPLETE	10/17/2016	0	10	.	14
WSH	7731	KING	FELONY	INCOMPLETE	10/17/2016	0	0	.	14
WSH	7732	PIERCE	MISDEMEANOR	INCOMPLETE	10/17/2016	0	0	.	14
WSH	7733	KING	FELONY	INCOMPLETE	10/17/2016	0	0	.	14
WSH	7734	PIERCE	MISDEMEANOR	FAXED	10/18/2016	0	0	7	.
WSH	7735	CLALLAM	MISDEMEANOR	TIC	10/18/2016	0	.	8	.
WSH	7737	LEWIS	MISDEMEANOR	FAXED	10/18/2016	1	1	8	.
WSH	7738	CLALLAM	FELONY	FAXED	10/18/2016	1	1	8	.
WSH	7739	PIERCE	MISDEMEANOR	FAXED	10/18/2016	0	0	9	.
WSH	7740	CLALLAM	FELONY	FAXED	10/18/2016	1	1	9	.
WSH	7741	KITSAP	MISDEMEANOR	FAXED	10/18/2016	0	0	10	.
WSH	7742	SKAGIT	FELONY	FAXED	10/18/2016	0	9	10	.
WSH	7743	KING	MISDEMEANOR	FAXED	10/18/2016	0	0	13	.
WSH	7744	WHATCOM	MISDEMEANOR	FAXED	10/18/2016	0	0	13	.
WSH	7745	KING	MISDEMEANOR	FAXED	10/18/2016	0	0	13	.
WSH	7746	KING	MISDEMEANOR	FAXED	10/18/2016	0	9	.	13
WSH	7748	PIERCE	MISDEMEANOR	FAXED	10/19/2016	0	0	7	.
WSH	7749	KITSAP	MISDEMEANOR	FAXED	10/19/2016	1	1	8	.
WSH	7750	PIERCE	MISDEMEANOR	FAXED	10/19/2016	0	0	8	.
WSH	7751	PIERCE	MISDEMEANOR	FAXED	10/19/2016	0	0	9	.
WSH	7752	KING	MISDEMEANOR	FAXED	10/19/2016	0	0	12	.

WSH	7753	KING	MISDEMEANOR	INCOMPLETE	10/19/2016	0	0	.	12
WSH	7754	KING	MISDEMEANOR	INCOMPLETE	10/19/2016	0	0	.	12
WSH	7755	SNOHOMISH	MISDEMEANOR	FAXED	10/19/2016	1	1	.	12
WSH	7756	KING	MISDEMEANOR	FAXED	10/19/2016	2	2	.	12
WSH	7758	PIERCE	MISDEMEANOR	FAXED	10/19/2016	5	5	.	12
WSH	7759	PIERCE	FELONY	INCOMPLETE	10/19/2016	1	1	.	12
WSH	7760	KING	MISDEMEANOR	WITHDRAWN	10/20/2016	0	.	5	.
WSH	7761	KING	MISDEMEANOR	FAXED	10/20/2016	0	0	6	.
WSH	7762	CLARK	FELONY	FAXED	10/20/2016	0	0	11	.
WSH	7763	LEWIS	FELONY	FAXED	10/20/2016	0	0	11	.
WSH	7764	WHATCOM	FELONY	INCOMPLETE	10/20/2016	6	6	.	11
WSH	7765	PIERCE	FELONY	FAXED	10/20/2016	1	1	.	11
WSH	7766	WHATCOM	FELONY	INCOMPLETE	10/20/2016	0	0	.	11
WSH	7768	KING	MISDEMEANOR	INCOMPLETE	10/20/2016	0	0	.	11
WSH	7769	WHATCOM	FELONY	INCOMPLETE	10/20/2016	1	1	.	11
WSH	7770	KING	MISDEMEANOR	INCOMPLETE	10/20/2016	0	0	.	11
WSH	7771	KING	MISDEMEANOR	INCOMPLETE	10/20/2016	0	0	.	11
WSH	7772	THURSTON	MISDEMEANOR	FAXED	10/21/2016	0	0	5	.
WSH	7773	SNOHOMISH	MISDEMEANOR	FAXED	10/21/2016	0	0	6	.
WSH	7774	KING	MISDEMEANOR	INCOMPLETE	10/21/2016	0	3	.	10
WSH	7775	KING	MISDEMEANOR	INCOMPLETE	10/21/2016	0	3	.	10
WSH	7776	SNOHOMISH	FELONY	INCOMPLETE	10/21/2016	0	0	.	10
WSH	7777	WHATCOM	FELONY	INCOMPLETE	10/21/2016	0	0	.	10
WSH	7779	KING	MISDEMEANOR	INCOMPLETE	10/21/2016	0	6	.	10
WSH	7780	KING	MISDEMEANOR	INCOMPLETE	10/21/2016	0	3	.	10
WSH	7781	PIERCE	MISDEMEANOR	FAXED	10/21/2016	0	0	.	10
WSH	7782	KING	FELONY CLASS C	INCOMPLETE	10/21/2016	0	0	.	10
WSH	7783	KING	MISDEMEANOR	WITHDRAWN	10/22/2016	0	.	3	.
WSH	7784	PIERCE	MISDEMEANOR	WITHDRAWN	10/24/2016	0	0	2	.
WSH	7785	KING	MISDEMEANOR	FAXED	10/24/2016	0	0	4	.
WSH	7786	MASON	FELONY	FAXED	10/24/2016	1	1	7	.
WSH	7787	CLARK	FELONY	FAXED	10/24/2016	1	1	7	.

WSH	7789	MASON	MISDEMEANOR	FAXED	10/24/2016	2	1	7	.
WSH	7790	KING	MISDEMEANOR	INCOMPLETE	10/24/2016	0	1	.	7
WSH	7791	PIERCE	FELONY	INCOMPLETE	10/24/2016	0	0	.	7
WSH	7792	KING	MISDEMEANOR	INCOMPLETE	10/24/2016	0	0	.	7
WSH	7793	KING	MISDEMEANOR	INCOMPLETE	10/24/2016	0	0	.	7
WSH	7794	KING	MISDEMEANOR	INCOMPLETE	10/24/2016	0	0	.	7
WSH	7795	GRAYS	MISDEMEANOR	INCOMPLETE	10/24/2016	0	0	.	7
WSH	7796	KING	MISDEMEANOR	INCOMPLETE	10/24/2016	0	0	.	7
WSH	7797	KING	MISDEMEANOR	INCOMPLETE	10/24/2016	0	3	.	7
WSH	7799	KING	MISDEMEANOR	INCOMPLETE	10/24/2016	0	0	.	7
WSH	7800	KING	FELONY	INCOMPLETE	10/24/2016	0	0	.	7
WSH	7801	GRAYS	FELONY	INCOMPLETE	10/24/2016	1	3	.	7
WSH	7802	CLALLAM	FELONY	INCOMPLETE	10/24/2016	0	0	.	7
WSH	7803	THURSTON	FELONY	FAXED	10/25/2016	0	0	2	.
WSH	7804	CLARK	MISDEMEANOR	FAXED	10/25/2016	0	0	3	.
WSH	7805	LEWIS	MISDEMEANOR	FAXED	10/25/2016	0	0	3	.
WSH	7806	KING	FELONY	FAXED	10/25/2016	0	0	6	.
WSH	7807	CLALLAM	FELONY	INCOMPLETE	10/25/2016	0	0	.	6
WSH	7808	CLARK	MISDEMEANOR	INCOMPLETE	10/25/2016	0	0	.	6
WSH	7810	KITSAP	MISDEMEANOR	INCOMPLETE	10/25/2016	0	0	.	6
WSH	7811	PIERCE	MISDEMEANOR	INCOMPLETE	10/25/2016	0	0	.	6
WSH	7812	WHATCOM	FELONY	INCOMPLETE	10/25/2016	0	0	.	6
WSH	7813	PIERCE	MISDEMEANOR	FAXED	10/25/2016	0	0	.	6
WSH	7814	KITSAP	MISDEMEANOR	INCOMPLETE	10/25/2016	0	0	.	6
WSH	7815	CLARK	FELONY	INCOMPLETE	10/25/2016	0	0	.	6
WSH	7816	KING	MISDEMEANOR	INCOMPLETE	10/25/2016	0	0	.	6
WSH	7817	PIERCE	MISDEMEANOR	FAXED	10/25/2016	0	0	.	6
WSH	7818	PIERCE	FELONY	INCOMPLETE	10/25/2016	0	0	.	6
WSH	7820	KING	MISDEMEANOR	INCOMPLETE	10/25/2016	0	0	.	6
WSH	7821	CLARK	FELONY	INCOMPLETE	10/26/2016	0	0	.	5
WSH	7822	KING	MISDEMEANOR	INCOMPLETE	10/26/2016	0	0	.	5
WSH	7823	CLARK	MISDEMEANOR	INCOMPLETE	10/26/2016	0	0	.	5

WSH	7824	CLARK	MISDEMEANOR	WITHDRAWN	10/26/2016	0	0	.	5
WSH	7825	KING	FELONY	INCOMPLETE	10/26/2016	0	0	.	5
WSH	7826	THURSTON	FELONY	INCOMPLETE	10/26/2016	1	1	.	5
WSH	7827	KING	MISDEMEANOR	INCOMPLETE	10/27/2016	0	1	.	4
WSH	7828	PIERCE	FELONY	INCOMPLETE	10/27/2016	0	0	.	4
WSH	7830	THURSTON	MISDEMEANOR	INCOMPLETE	10/27/2016	1	1	.	4
WSH	7831	PIERCE	MISDEMEANOR	INCOMPLETE	10/27/2016	0	0	.	4
WSH	7832	CLARK	MISDEMEANOR	INCOMPLETE	10/27/2016	0	0	.	4
WSH	7833	KING	FELONY	INCOMPLETE	10/27/2016	0	0	.	4
WSH	7834	KITSAP	FELONY	INCOMPLETE	10/27/2016	0	0	.	4
WSH	7835	CLARK	MISDEMEANOR	INCOMPLETE	10/27/2016	0	0	.	4
WSH	7836	CLARK	MISDEMEANOR	INCOMPLETE	10/27/2016	1	1	.	4
WSH	7837	WHATCOM	FELONY	INCOMPLETE	10/27/2016	0	0	.	4
WSH	7838	WHATCOM	MISDEMEANOR	INCOMPLETE	10/27/2016	0	0	.	4
WSH	7839	KING	MISDEMEANOR	INCOMPLETE	10/27/2016	0	0	.	4
WSH	7841	SNOHOMISH	MISDEMEANOR	INCOMPLETE	10/27/2016	0	0	.	4
WSH	7842	THURSTON	MISDEMEANOR	INCOMPLETE	10/27/2016	1	1	.	4
WSH	7843	PIERCE	MISDEMEANOR	WITHDRAWN	10/27/2016	0	0	.	4
WSH	7844	KING	FELONY	INCOMPLETE	10/27/2016	0	0	.	4
WSH	7845	KING	MISDEMEANOR	INCOMPLETE	10/28/2016	0	.	.	3
WSH	7846	KING	MISDEMEANOR	INCOMPLETE	10/28/2016	0	0	.	3
WSH	7847	KING	MISDEMEANOR	INCOMPLETE	10/28/2016	0	0	.	3
WSH	7848	JEFFERSON	FELONY	INCOMPLETE	10/28/2016	0	0	.	3
WSH	7849	SNOHOMISH	MISDEMEANOR	INCOMPLETE	10/28/2016	0	0	.	3
WSH	7851	CLARK	MISDEMEANOR	INCOMPLETE	10/28/2016	3	3	.	3
WSH	7852	KING	MISDEMEANOR	INCOMPLETE	10/28/2016	0	.	.	3
WSH	7853	CLALLAM	MISDEMEANOR	INCOMPLETE	10/28/2016	0	0	.	3
WSH	7854	CLARK	FELONY	INCOMPLETE	10/28/2016	0	0	.	3
WSH	7855	WHATCOM	MISDEMEANOR	INCOMPLETE	10/28/2016	3	3	.	3
WSH	7856	WHATCOM	MISDEMEANOR	INCOMPLETE	10/28/2016	0	.	.	3
WSH	7857	PIERCE	MISDEMEANOR	INCOMPLETE	10/31/2016	0	0	.	0
WSH	7858	PIERCE	FELONY	INCOMPLETE	10/31/2016	0	0	.	0

WSH	7859	KING	MISDEMEANOR	INCOMPLETE	10/31/2016	0	0	.	0
WSH	7861	KING	FELONY	INCOMPLETE	10/31/2016	0	0	.	0
ESH	7065	SPOKANE	MISDEMEANOR	FAX	8/31/2016	0	0	33	.
ESH	7356	LINCOLN	FELONY	FAX	9/6/2016	0	0	27	.
ESH	7361	SPOKANE	MISDEMEANOR	FAX	9/8/2016	0	0	25	.
ESH	7363	SPOKANE	FELONY	FAX	9/9/2016	3	3	24	.
ESH	7364	SPOKANE	FELONY	FAX	9/9/2016	5	5	24	.
ESH	7374	BENTON	FELONY	FAX	9/29/2016	0	0	13	.
ESH	7379	SPOKANE	FELONY	FAX	9/16/2016	0	0	21	.
ESH	7380	OKANOGAN	FELONY	FAX	9/20/2016	1	1	28	.
ESH	7381	FRANKLIN	FELONY	FAX	9/20/2016	2	2	15	.
ESH	7382	BENTON	MISDEMEANOR	FAX	9/20/2016	0	0	14	.
ESH	7384	CHELAN	MISDEMEANOR	FAX	9/20/2016	0	0	16	.
ESH	7387	CHELAN	MISDEMEANOR	FAX	9/22/2016	0	0	15	.
ESH	7388	YAKIMA	MISDEMEANOR	FAX	9/23/2016	3	3	11	.
ESH	7389	SPOKANE	FELONY	FAX	9/23/2016	0	3	13	.
ESH	7391	SPOKANE	FELONY	FAX	9/26/2016	1	1	15	.
ESH	7392	GRANT	FELONY	FAX	9/27/2016	1	1	8	.
ESH	7394	CHELAN	MISDEMEANOR	FAX	9/27/2016	0	1	15	.
ESH	7395	BENTON	MISDEMEANOR	FAX	9/28/2016	0	1	13	.
ESH	7396	SPOKANE	MISDEMEANOR	FAX	9/28/2016	0	7	14	.
ESH	7397	SPOKANE	MISDEMEANOR	FAX	9/28/2016	0	2	.	.
ESH	7398	BENTON	MISDEMEANOR	FAX	9/28/2016	0	1	13	.
ESH	7399	SPOKANE	MISDEMEANOR	FAX	9/29/2016	0	1	27	.
ESH	7570	CHELAN	MISDEMEANOR	FAX	9/20/2016	0	0	17	.
ESH	7571	SPOKANE	FELONY	ADMISSION	9/27/2016	9	9	13	.
ESH	7572	PEND	MISDEMEANOR	FAX	9/28/2016	1	1	13	.
ESH	7573	SPOKANE	FELONY	FAX	9/28/2016	1	1	14	.
ESH	7574	FRANKLIN	FELONY	FAX	9/29/2016	8	8	18	.
ESH	7575	FRANKLIN	MISDEMEANOR	FAX	9/29/2016	11	11	19	.
ESH	7576	YAKIMA	MISDEMEANOR	FAX	9/29/2016	0	0	12	.
ESH	7577	OKANOGAN	FELONY	FAX	9/30/2016	0	0	17	.

ESH	7862	KITTITAS	FELONY	FAX	9/23/2016	24	24	.	.
ESH	7863	SPOKANE	FELONY	FAX	10/1/2016	3	3	.	.
ESH	7864	YAKIMA	MISDEMEANOR	FAX	10/3/2016	1	1	9	.
ESH	7865	SPOKANE	FELONY	FAX	10/3/2016	0	0	.	.
ESH	7866	YAKIMA	MISDEMEANOR	FAX	10/4/2016	1	1	13	.
ESH	7867	STEVENS	MISDEMEANOR	FAX	10/4/2016	2	2	13	.
ESH	7868	FRANKLIN	MISDEMEANOR	FAX	10/4/2016	0	0	17	.
ESH	7869	FRANKLIN	FELONY	FAX	10/4/2016	1	1	17	.
ESH	7870	ASOTIN	MISDEMEANOR	FAX	10/5/2016	0	1	12	.
ESH	7872	BENTON	FELONY	FAX	10/5/2016	1	1	15	.
ESH	7873	SPOKANE	FELONY	FAX	10/6/2016	0	0	11	.
ESH	7874	BENTON	FELONY	FAX	10/6/2016	0	0	12	.
ESH	7875	SPOKANE	FELONY	FAX	10/6/2016	4	4	19	.
ESH	7876	BENTON	MISDEMEANOR	FAX	10/7/2016	0	0	10	.
ESH	7877	YAKIMA	MISDEMEANOR	FAX	10/7/2016	0	3	11	.
ESH	7878	KITTITAS	FELONY	FAX	10/7/2016	3	3	14	.
ESH	7879	SPOKANE	FELONY	FAX	10/7/2016	0	0	17	.
ESH	7880	OKANOGAN	FELONY	ADMISSION	10/10/2016	0	0	2	.
ESH	7882	OKANOGAN	FELONY	FAX	10/10/2016	1	1	11	.
ESH	7883	YAKIMA	MISDEMEANOR	FAX	10/10/2016	0	0	14	.
ESH	7884	YAKIMA	MISDEMEANOR	FAX	10/10/2016	0	0	15	.
ESH	7885	FRANKLIN	MISDEMEANOR	FAX	10/11/2016	0	0	9	.
ESH	7886	FRANKLIN	FELONY	FAX	10/11/2016
ESH	7887	CHELAN	MISDEMEANOR	FAX	10/12/2016	0	0	7	.
ESH	7888	BENTON	MISDEMEANOR	FAX	10/12/2016	0	0	12	.
ESH	7889	BENTON	MISDEMEANOR	FAX	10/12/2016	0	0	12	.
ESH	7890	SPOKANE	FELONY	FAX	10/12/2016	0	0	12	.
ESH	7892	YAKIMA	MISDEMEANOR	FAX	10/12/2016	0	0	14	.
ESH	7893	WHITMAN	FELONY	ADMISSION	10/13/2016	0	0	4	.
ESH	7894	KITTITAS	MISDEMEANOR	FAX	10/13/2016	0	0	13	.
ESH	7895	BENTON	FELONY	FAX	10/13/2016	0	1	14	.
ESH	7896	YAKIMA	FELONY	FAX	10/13/2016	0	0	15	.

ESH	7897	SPOKANE	FELONY	FAX	10/13/2016	1	1	.	18
ESH	7898	FRANKLIN	MISDEMEANOR	FAX	10/13/2016	14	14	.	18
ESH	7899	SPOKANE	FELONY	ADMISSION	10/14/2016	0	0	7	.
ESH	7900	SPOKANE	MISDEMEANOR	ADMISSION	10/14/2016	0	0	7	.
ESH	7901	YAKIMA	FELONY	ADMISSION	10/18/2016	0	1	1	.
ESH	7903	SPOKANE	FELONY	FAX	10/18/2016	0	1	7	.
ESH	7904	YAKIMA	MISDEMEANOR	FAX	10/18/2016	1	1	.	13
ESH	7905	CHELAN	FELONY	FAX	10/18/2016	0	0	.	13
ESH	7906	KITTITAS	FELONY	ADMISSION	10/19/2016	0	0	6	.
ESH	7907	BENTON	MISDEMEANOR	FAX	10/19/2016	0	0	12	.
ESH	7908	BENTON	MISDEMEANOR	FAX	10/19/2016	0	0	.	12
ESH	7909	BENTON	MISDEMEANOR	FAX	10/19/2016	0	0	.	12
ESH	7910	FRANKLIN	FELONY	FAX	10/19/2016	0	0	.	12
ESH	7911	SPOKANE	FELONY	FAX	10/19/2016	5	5	.	12
ESH	7913	FRANKLIN	FELONY	FAX	10/19/2016	0	0	.	12
ESH	7914	OKANOGAN	MISDEMEANOR	ADMISSION	10/20/2016	0	0	4	.
ESH	7915	YAKIMA	MISDEMEANOR	FAX	10/20/2016	1	1	.	11
ESH	7916	YAKIMA	MISDEMEANOR	FAX	10/20/2016	1	1	.	11
ESH	7917	YAKIMA	MISDEMEANOR	FAX	10/21/2016	0	0	6	.
ESH	7918	SPOKANE	FELONY	FAX	10/21/2016	0	0	.	10
ESH	7919	BENTON	MISDEMEANOR	FAX	10/21/2016	0	0	.	10
ESH	7920	KITTITAS	FELONY	FAX	10/21/2016	4	5	.	10
ESH	7921	SPOKANE	FELONY	FAX	10/24/2016	2	2	.	7
ESH	7923	SPOKANE	FELONY	FAX	10/24/2016	0	0	.	7
ESH	7924	SPOKANE	FELONY	ADMISSION	10/25/2016	0	0	6	.
ESH	7925	SPOKANE	FELONY	ADMISSION	10/25/2016	0	0	6	.
ESH	7926	YAKIMA	MISDEMEANOR	FAX	10/25/2016	1	1	.	6
ESH	7927	FRANKLIN	MISDEMEANOR	FAX	10/25/2016	0	0	.	6
ESH	7928	CHELAN	MISDEMEANOR	ADMISSION	10/25/2016	0	0	.	6
ESH	7929	CHELAN	MISDEMEANOR	ADMISSION	10/27/2016	0	0	.	4
ESH	7930	YAKIMA	MISDEMEANOR	FAX	10/28/2016	0	0	.	3
ESH	7931	YAKIMA	MISDEMEANOR	FAX	10/28/2016	0	0	.	3

ESH	7932	Whitman	MISDEMEANOR	FAX	10/28/2016	0	3	.	3
ESH	7934	OKANOGAN	FELONY	FAX	10/28/2016	0	0	.	3
ESH	7935	OKANOGAN	FELONY	ADMISSION	10/28/2016	0	0	.	3
ESH	7936	SPOKANE	FELONY	FAX	10/31/2016	0	0	.	0

Appendix F: Class Member--Restoration Information for October 2016

Hospital	Class Member	County	Offense	Completion Method or Incomplete	Order Signed Date	Number of days from signed order to:			
						Order Received	Discovery	Complete	Incomplete to End of Reporting Period
WSH	6965	PIERCE	FELONY	BED OFFER	8/16/2016	2	2	65	.
WSH	6981	PIERCE	FELONY	BED OFFER	8/22/2016	1	1	60	.
WSH	6985	CLARK	FELONY	BED OFFER	8/24/2016	1	1	40	.
WSH	6986	KING	FELONY	BED OFFER	8/24/2016	1	1	41	.
WSH	6994	PIERCE	FELONY	BED OFFER	8/26/2016	3	3	46	.
WSH	6997	KITSAP	MISDEMEANOR	BED OFFER	8/29/2016	0	0	42	.
WSH	6999	KITSAP	FELONY	BED OFFER	8/30/2016	1	1	48	.
WSH	7000	PIERCE	FELONY	BED OFFER	8/30/2016	1	1	42	.
WSH	7003	KING	FELONY	BED OFFER	8/31/2016	1	1	61	.
WSH	7004	PIERCE	FELONY	BED OFFER	8/31/2016	0	0	40	.
WSH	7436	PIERCE	FELONY	BED OFFER	9/1/2016	1	1	42	.
WSH	7438	PIERCE	FELONY	INCOMPLETE	9/1/2016	1	1	.	60
WSH	7447	PIERCE	FELONY	BED OFFER	9/6/2016	0	2	.	55
WSH	7452	PIERCE	FELONY	BED OFFER	9/7/2016	1	1	50	.
WSH	7453	PIERCE	FELONY	BED OFFER	9/7/2016	0	0	43	.
WSH	7457	KITSAP	GROSS MISD	BED OFFER	9/9/2016	7	7	31	.
WSH	7462	THURSTON	FELONY	BED OFFER	9/12/2016	2	2	28	.
WSH	7463	PIERCE	FELONY	INCOMPLETE	9/12/2016	0	0	.	49
WSH	7464	THURSTON	FELONY	INCOMPLETE	9/12/2016	1	1	.	49
WSH	7470	KITSAP	FELONY	BED OFFER	9/12/2016	0	0	.	49
WSH	7471	KING	FELONY	INCOMPLETE	9/13/2016	0	0	.	48
WSH	7472	THURSTON	FELONY	BED OFFER	9/13/2016	0	0	27	.

WSH	7474	KITSAP	MISDEMEANOR	CANCELLED	9/13/2016	0	0	22	.
WSH	7475	KING	FELONY	INCOMPLETE	9/13/2016	0	0	.	48
WSH	7483	PIERCE	FELONY	INCOMPLETE	9/15/2016	4	4	.	46
WSH	7485	WHATCOM	FELONY	INCOMPLETE	9/15/2016	0	0	.	46
WSH	7487	CLARK	FELONY	BED OFFER	9/15/2016	0	0	19	.
WSH	7488	KING	FELONY	INCOMPLETE	9/15/2016	0	0	.	46
WSH	7489	PIERCE	FELONY	INCOMPLETE	9/15/2016	0	0	.	46
WSH	7490	LEWIS	FELONY	INCOMPLETE	9/15/2016	4	4	.	46
WSH	7491	KING	MISDEMEANOR	BED OFFER	9/15/2016	0	0	29	.
WSH	7493	THURSTON	MISDEMEANOR	BED OFFER	9/16/2016	11	11	28	.
WSH	7494	GRAYS	FELONY	BED OFFER	9/19/2016	0	0	42	.
WSH	7497	KING	FELONY	INCOMPLETE	9/20/2016	0	0	.	41
WSH	7498	KITSAP	GROSS MISD	BED OFFER	9/20/2016	0	0	16	.
WSH	7499	CLARK	FELONY	INCOMPLETE	9/20/2016	0	0	.	41
WSH	7500	KING	FELONY	BED OFFER	9/21/2016	0	0	15	.
WSH	7501	LEWIS	FELONY	INCOMPLETE	9/21/2016	0	0	.	40
WSH	7503	KING	MISDEMEANOR	BED OFFER	9/21/2016	0	0	33	.
WSH	7504	KING	MISDEMEANOR	BED OFFER	9/21/2016	0	0	19	.
WSH	7505	KING	FELONY	BED OFFER	9/21/2016	0	0	15	.
WSH	7507	PIERCE	FELONY	INCOMPLETE	9/21/2016	0	0	.	40
WSH	7508	WHATCOM	FELONY	BED OFFER	9/22/2016	0	0	12	.
WSH	7509	THURSTON	FELONY	BED OFFER	9/22/2016	0	0	11	.
WSH	7511	MASON	GROSS MISD	BED OFFER	9/22/2016	0	0	15	.
WSH	7512	SKAGIT	FELONY	INCOMPLETE	9/22/2016	0	0	.	39
WSH	7513	PIERCE	FELONY	INCOMPLETE	9/22/2016	4	4	.	39
WSH	7515	GRAYS	FELONY	BED OFFER	9/23/2016	3	3	11	.
WSH	7516	THURSTON	FELONY	INCOMPLETE	9/26/2016	0	0	.	35
WSH	7517	PIERCE	FELONY	INCOMPLETE	9/26/2016	0	0	.	35
WSH	7519	KITSAP	MISDEMEANOR	BED OFFER	9/27/2016	0	0	34	.
WSH	7520	KING	MISDEMEANOR	BED OFFER	9/27/2016	0	0	27	.
WSH	7521	KING	MISDEMEANOR	INCOMPLETE	9/28/2016	0	0	.	33
WSH	7522	PIERCE	FELONY	INCOMPLETE	9/28/2016	1	1	.	33

WSH	7523	PIERCE	FELONY	BED OFFER	9/28/2016	0	0	8	.
WSH	7524	KING	FELONY	INCOMPLETE	9/28/2016	0	0	.	33
WSH	7578	PIERCE	FELONY	INCOMPLETE	9/12/2016	31	31	.	49
WSH	7579	KING	MISDEMEANOR	BED OFFER	9/21/2016	1	1	28	.
WSH	7580	KITSAP	FELONY	BED OFFER	9/23/2016	19	19	25	.
WSH	7581	THURSTON	MISDEMEANOR	BED OFFER	9/27/2016	15	15	.	34
WSH	7582	THURSTON	FELONY	INCOMPLETE	9/28/2016	0	0	.	33
WSH	7583	CLARK	FELONY	BED OFFER	9/29/2016	1	1	8	.
WSH	7584	PIERCE	FELONY	INCOMPLETE	9/29/2016	1	1	.	32
WSH	7585	KITSAP	FELONY	BED OFFER	9/29/2016	0	0	26	.
WSH	7586	SNOHOMISH	FELONY	CANCELLED	9/29/2016	0	0	7	.
WSH	7587	KING	GROSS MISD	BED OFFER	9/29/2016	0	0	14	.
WSH	7589	KITSAP	FELONY	BED OFFER	9/30/2016	4	4	18	.
WSH	7590	KING	FELONY	BED OFFER	9/30/2016	0	0	27	.
WSH	7937	PIERCE	MISDEMEANOR	CANCELLED	10/3/2016	0	0	17	.
WSH	7938	KING	FELONY	BED OFFER	10/3/2016	0	0	0	.
WSH	7939	KING	FELONY	INCOMPLETE	10/3/2016	0	0	.	28
WSH	7940	KING	FELONY	BED OFFER	10/3/2016	0	0	18	.
WSH	7941	COWLITZ	FELONY	INCOMPLETE	10/4/2016	0	0	.	27
WSH	7942	KING	FELONY	INCOMPLETE	10/4/2016	0	0	.	27
WSH	7944	CLARK	FELONY	INCOMPLETE	10/4/2016	0	0	.	27
WSH	7945	COWLITZ	FELONY	BED OFFER	10/5/2016	1	1	26	.
WSH	7946	PIERCE	FELONY	INCOMPLETE	10/5/2016	0	0	.	26
WSH	7947	KING	FELONY	BED OFFER	10/5/2016	0	0	0	.
WSH	7948	KING	FELONY	BED OFFER	10/5/2016	0	0	20	.
WSH	7949	KING	FELONY	INCOMPLETE	10/5/2016	0	0	.	26
WSH	7950	PIERCE	FELONY	INCOMPLETE	10/5/2016	1	1	.	26
WSH	7951	PIERCE	FELONY	INCOMPLETE	10/5/2016	1	1	.	26
WSH	7952	CLARK	FELONY	INCOMPLETE	10/5/2016	0	0	.	26
WSH	7954	SNOHOMISH	FELONY	BED OFFER	10/5/2016	1	1	13	.
WSH	7955	KING	MISDEMEANOR	INCOMPLETE	10/6/2016	0	0	.	25
WSH	7956	COWLITZ	FELONY	BED OFFER	10/6/2016	8	8	15	.

WSH	7957	CLARK	FELONY	BED OFFER	10/6/2016	0	0	0	.
WSH	7958	WHATCOM	FELONY	INCOMPLETE	10/6/2016	0	0	.	25
WSH	7959	MASON	MISDEMEANOR	INCOMPLETE	10/6/2016	15	15	.	25
WSH	7960	PIERCE	FELONY	INCOMPLETE	10/6/2016	0	0	.	25
WSH	7961	PIERCE	FELONY	BED OFFER	10/7/2016	7	7	20	.
WSH	7962	SNOHOMISH	MISDEMEANOR	INCOMPLETE	10/7/2016	0	0	.	24
WSH	7963	PIERCE	FELONY	BED OFFER	10/7/2016	0	0	0	.
WSH	7965	KING	FELONY	BED OFFER	10/10/2016	0	0	0	.
WSH	7966	GRAYS	FELONY	BED OFFER	10/10/2016	1	1	11	.
WSH	7967	KING	FELONY	INCOMPLETE	10/10/2016	0	0	.	21
WSH	7968	THURSTON	FELONY	BED OFFER	10/10/2016	0	0	17	.
WSH	7969	THURSTON	FELONY	INCOMPLETE	10/10/2016	0	0	.	21
WSH	7970	THURSTON	FELONY	INCOMPLETE	10/10/2016	0	0	.	21
WSH	7971	CLALLAM	MISDEMEANOR	BED OFFER	10/10/2016	0	0	11	.
WSH	7972	LEWIS	FELONY	INCOMPLETE	10/11/2016	0	0	.	20
WSH	7973	MASON	FELONY	BED OFFER	10/11/2016	0	0	10	.
WSH	7975	PIERCE	FELONY	INCOMPLETE	10/12/2016	0	0	.	19
WSH	7976	KITSAP	FELONY	BED OFFER	10/12/2016	0	0	12	.
WSH	7977	GRAYS	FELONY	BED OFFER	10/12/2016	0	0	14	.
WSH	7978	THURSTON	FELONY	BED OFFER	10/12/2016	0	0	13	.
WSH	7979	PIERCE	FELONY	INCOMPLETE	10/12/2016	1	1	.	19
WSH	7980	KING	FELONY	BED OFFER	10/13/2016	0	0	.	18
WSH	7981	SKAGIT	FELONY	BED OFFER	10/13/2016	0	0	14	.
WSH	7982	WHATCOM	FELONY	BED OFFER	10/13/2016	1	1	12	.
WSH	7983	KING	FELONY	INCOMPLETE	10/17/2016	2	2	.	14
WSH	7985	PIERCE	FELONY	INCOMPLETE	10/17/2016	2	2	.	14
WSH	7986	PIERCE	FELONY	INCOMPLETE	10/17/2016	1	1	.	14
WSH	7987	PIERCE	FELONY	INCOMPLETE	10/17/2016	1	1	.	14
WSH	7988	PIERCE	MISDEMEANOR	INCOMPLETE	10/17/2016	1	1	.	14
WSH	7989	THURSTON	FELONY	INCOMPLETE	10/17/2016	2	2	.	14
WSH	7990	THURSTON	FELONY	INCOMPLETE	10/17/2016	0	0	.	14
WSH	7991	KING	FELONY	BED OFFER	10/18/2016	1	1	.	13

WSH	7992	GRAYS	MISDEMEANOR	INCOMPLETE	10/18/2016	3	3	.	13
WSH	7993	PIERCE	FELONY	INCOMPLETE	10/18/2016	1	1	.	13
WSH	7994	PIERCE	FELONY	BED OFFER	10/19/2016	1	1	0	.
WSH	7996	PIERCE	FELONY	INCOMPLETE	10/19/2016	1	1	.	12
WSH	7997	WHATCOM	FELONY	BED OFFER	10/20/2016	0	0	0	.
WSH	7998	THURSTON	FELONY	BED OFFER	10/20/2016	0	0	0	.
WSH	7999	KING	FELONY	BED OFFER	10/20/2016	0	0	.	11
WSH	8000	WHATCOM	FELONY	INCOMPLETE	10/20/2016	0	0	.	11
WSH	8001	COWLITZ	FELONY	INCOMPLETE	10/20/2016	0	0	.	11
WSH	8002	CLARK	FELONY	INCOMPLETE	10/21/2016	0	0	.	10
WSH	8003	CLARK	FELONY	BED OFFER	10/21/2016	0	0	5	.
WSH	8004	KING	FELONY	INCOMPLETE	10/24/2016	0	0	.	7
WSH	8006	SNOHOMISH	FELONY	INCOMPLETE	10/24/2016	0	0	.	7
WSH	8007	KING	FELONY	INCOMPLETE	10/24/2016	0	0	.	7
WSH	8008	KING	MISDEMEANOR	INCOMPLETE	10/25/2016	1	1	.	6
WSH	8009	CLARK	FELONY	INCOMPLETE	10/25/2016	1	1	.	6
WSH	8010	PIERCE	FELONY	BED OFFER	10/26/2016	0	0	0	.
WSH	8011	PIERCE	FELONY	BED OFFER	10/26/2016	0	0	0	.
WSH	8012	PIERCE	FELONY	INCOMPLETE	10/26/2016	0	0	.	5
WSH	8013	KING	FELONY	INCOMPLETE	10/27/2016	0	0	.	4
WSH	8014	CLARK	FELONY	INCOMPLETE	10/27/2016	0	0	.	4
WSH	8016	CLARK	FELONY	INCOMPLETE	10/28/2016	0	0	.	3
WSH	8017	SNOHOMISH	FELONY	BED OFFER	10/31/2016	0	0	0	.
WSH	8018	KING	FELONY	INCOMPLETE	10/31/2016	0	0	.	0
WSH	8019	THURSTON	FELONY	INCOMPLETE	10/31/2016	0	0	.	0
WSH	8020	KING	FELONY	BED OFFER	10/31/2016	0	0	0	.
ESH	7543	CHELAN	FELONY	ADMISSION	9/28/2016	0	0	7	.
ESH	7544	SPOKANE	FELONY	ADMISSION	9/29/2016	0	0	4	.
ESH	8021	DOUGLAS	MISDEMEANOR	ADMISSION	10/3/2016	0	0	2	.
ESH	8022	SPOKANE	FELONY	ADMISSION	10/4/2016	2	2	2	.
ESH	8023	LINCOLN	FELONY	ADMISSION	10/4/2016	0	0	2	.
ESH	8024	CHELAN	MISDEMEANOR	ADMISSION	10/11/2016	0	0	6	.

ESH	8025	GRANT	FELONY	ADMISSION	10/13/2016	0	0	5	.
ESH	8027	SPOKANE	FELONY	ADMISSION	10/14/2016	0	0	0	.
ESH	8028	SPOKANE	FELONY	ADMISSION	10/14/2016	0	0	10	.
ESH	8029	SPOKANE	FELONY	ADMISSION	10/14/2016	0	0	11	.
ESH	8030	SPOKANE	FELONY	ADMISSION	10/14/2016	3	3	11	.
ESH	8031	CHELAN	MISDEMEANOR	ADMISSION	10/18/2016	1	1	8	.
ESH	8032	CHELAN	MISDEMEANOR	ADMISSION	10/18/2016	0	0	8	.
ESH	8033	OKANOGAN	FELONY	ADMISSION	10/19/2016	0	0	0	.
ESH	8034	STEVENS	MISDEMEANOR	ADMISSION	10/19/2016	3	3	8	.
ESH	8035	SPOKANE	FELONY	ADMISSION	10/24/2016	0	0	4	.
ESH	8037	SPOKANE	FELONY	ADMISSION	10/25/2016	1	1	.	6
ESH	8038	BENTON	FELONY	ADMISSION	10/26/2016	0	0	.	5
ESH	8039	FRANKLIN	FELONY	ADMISSION	10/27/2016	0	0	.	4
ESH	8040	ADAMS	FELONY	ADMISSION	10/31/2016	.	.	.	0

Appendix G: Class Member--Restoration Information for October 2016 – Maple Lane

Hospital	Class Member	County	Offense	Completion Method or Incomplete	Order Signed Date	Number of days from signed order to:			
						Received	Discovery	Complete	Incomplete to End of Reporting Period
WSH	8017	SNOHOMISH	FELONY	BED OFFER	10/31/2016	0	0	0	.
WSH	8020	KING	FELONY	BED OFFER	10/31/2016	0	0	0	.
WSH	7973	MASON	FELONY	BED OFFER	10/11/2016	0	0	10	.
WSH	7515	GRAYS	FELONY	BED OFFER	9/23/2016	3	3	11	.
WSH	7971	CLALLAM	MISDEMEANOR	BED OFFER	10/10/2016	0	0	11	.
WSH	7508	WHATCOM	FELONY	BED OFFER	9/22/2016	0	0	12	.
WSH	7976	KITSAP	FELONY	BED OFFER	10/12/2016	0	0	12	.
WSH	7982	WHATCOM	FELONY	BED OFFER	10/13/2016	1	1	12	.
WSH	7587	KING	GROSS MISD	BED OFFER	9/29/2016	0	0	14	.
WSH	7977	GRAYS	FELONY	BED OFFER	10/12/2016	0	0	14	.
WSH	7981	SKAGIT	FELONY	BED OFFER	10/13/2016	0	0	14	.
WSH	7511	MASON	GROSS MISD	BED OFFER	9/22/2016	0	0	15	.

WSH	7504	KING	MISDEMEANOR	BED OFFER	9/21/2016	0	0	19	.
WSH	7945	COWLITZ	FELONY	BED OFFER	10/5/2016	1	1	26	.
WSH	7590	KING	FELONY	BED OFFER	9/30/2016	0	0	27	.
WSH	7493	THURSTON	MISDEMEANOR	BED OFFER	9/16/2016	11	11	28	.
WSH	7491	KING	MISDEMEANOR	BED OFFER	9/15/2016	0	0	29	.
WSH	7457	KITSAP	GROSS MISD	BED OFFER	9/9/2016	7	7	31	.
WSH	7980	KING	FELONY	BED OFFER	10/13/2016	0	0	.	18
WSH	7991	KING	FELONY	BED OFFER	10/18/2016	1	1	.	13

Appendix H: Class Member--Restoration Information for October 2016 – Yakima

Hospital	Class Member	County	Offense	Completion Method or Incomplete	Order Signed Date	Number of days from signed to:			
						Received	Discovery	Complete	Incomplete to End of Reporting Period
WSH	7938	KING	FELONY	BED OFFER	10/3/2016	0	0	0	.
WSH	7957	CLARK	FELONY	BED OFFER	10/6/2016	0	0	0	.
WSH	8003	CLARK	FELONY	BED OFFER	10/21/2016	0	0	5	.
WSH	7966	GRAYS	FELONY	BED OFFER	10/10/2016	1	1	11	.
WSH	7500	KING	FELONY	BED OFFER	9/21/2016	0	0	15	.
WSH	7505	KING	FELONY	BED OFFER	9/21/2016	0	0	15	.
WSH	7968	THURSTON	FELONY	BED OFFER	10/10/2016	0	0	17	.
WSH	7589	KITSAP	FELONY	BED OFFER	9/30/2016	4	4	18	.
WSH	7940	KING	FELONY	BED OFFER	10/3/2016	0	0	18	.
WSH	7487	CLARK	FELONY	BED OFFER	9/15/2016	0	0	19	.
WSH	7948	KING	FELONY	BED OFFER	10/5/2016	0	0	20	.
WSH	7472	THURSTON	FELONY	BED OFFER	9/13/2016	0	0	27	.
WSH	7462	THURSTON	FELONY	BED OFFER	9/12/2016	2	2	28	.
WSH	7494	GRAYS	FELONY	BED OFFER	9/19/2016	0	0	42	.
WSH	7999	KING	FELONY	BED OFFER	10/20/2016	0	0	.	11

Appendix I: Calculation of Contempt Fines – Sent as an attachment to this report

Please see attachment

Appendix J: Outliers and Delay Comments

Hospital	Class Member	Location	County	Completion Method or Incomplete	Order signed date	Number of Days from signed order:			Delay Comments
						Order Received	Discovery	Incomplete to end of Reporting Period	
EVALUATIONS									
WSH	7018	JAIL	PIERCE	INCOMPL	8/17/2016	35	35	44	Faxed 10/04/2016
WSH	6784	JAIL	KING	INCOMPL	8/18/2016	0	0	43	Faxed 10/03/2017
WSH	7019	INPATIENT	PIERCE	INCOMPL	8/18/2016	4	4	43	Notified of pr status change on 10/05/2016
WSH	6822	INPATIENT	KING	INCOMPL	8/25/2016	1	1	36	Bed offered 10/12/2016
WSH	7402	INPATIENT	KING	INCOMP	9/2/2016	24	24	28	Cancelled 10/06/2016, new order received, bed offered 10/07/2016
WSH	7404	INPATIENT	KING	BED OFFER	9/6/2016	0	0	24	Bed offered 10/03/2016
WSH	7405	INPATIENT	THURS	BED OFFER	9/7/2016	0	0	23	Bed offered 10/03/2016
WSH	7150	JAIL	WHAT	INCOMPL	9/9/2016	0	0	21	Faxed 10/12/2017
RESTORATION									

WSH	6965	COMP RES	PIERCE	INCOMPL	8/16/20 16	2	2	45	Bed offered 10/20/2016
EVALUATIONS									
ESH	7325	JAIL	PEND OREILL E	FAX	8/11/20 16	0	0	50	8/16/16 tms: Client refused to cooperate with evaluation, no eval completed, FER sent. new order requested.
ESH	7326	JAIL	WALLA WALLA	FAX	8/12/20 16	3	3	49	No evaluation completed, FER sent.
ESH	7327	JAIL	YAKIM A	FAX	8/12/20 16	3	0	49	No evaluation completed, FER sent.
ESH	7065	JAIL	SPOK	FAX	8/31/20 16	0	0	30	Evaluation completed (9 days) on 9/9/2016, fax sent 10/3/2016.
ESH	7354	JAIL	YAKIM A	FAX	9/2/201 6	4	4	28	9/14/16 kda: Client refused to participate. No evaluation completed. FER will be sent.
ESH	7356	JAIL	LINCOL N	FAX	9/6/201 6	0	0	24	Evaluation completed (6 days) on 9/12/2016, fax sent 10/3/2016.
ESH	7361	JAIL	SPOK	FAX	9/8/201 6	0	0	22	Evaluation completed (6 days) on 9/14/2016, fax sent 10/3/2016.
ESH	7363	JAIL	SPOK	FAX	9/9/201 6	3	3	21	Evaluation completed (5 days) on 9/14/2016, fax sent 10/3/2016.

ESH	7364	JAIL	SPOK	FAX	9/9/2016	5	5	21	<p>Eastern State Hospital recently received a court order to conduct a competency evaluation on the defendant named above from DB. The court order was entered on 9/9/16, there is no filed date on it and Eastern State Hospital cannot confirm the date entered by the courts website, the order was not received by ESH until 9/14/16 giving the hospital one working day to conduct the evaluation and be in compliance with "Trublood". We are requesting the filled court order be sent to Eastern State Hospital as soon as possible. Evaluation completed 9/19/2016, faxed on 10/3/2016.</p>
-----	------	------	------	-----	----------	---	---	----	--

Appendix K: Good Cause Exception data (separate attachment) – Sent as an attachment to this report.

Please see attachment.