

Child Support

<u>Exhibits</u>	Page
1. Child Support Incentive Scorecard SFY 1999 and 2000	79
2. Child Support Caseload and Collections July 1998 to June 2000.....	80
3. Child Support Caseload by Type October 1998 to June 2000	81
4. Child Support Collections Actual and Projected SFY 1999 – SFY 2000	82
5. Child Support Collections by Case Type March 1998 to June 2000	82
6. Non-Custodial Parents by Gender August 2000	83
7. Non-Custodial Parents by Age August 2000	83

Child Support

This section describes the child support caseload. A new federal incentive system has changed the way in which the Child Support Division does its business – it now has a performance-based budget for incentives. The incentives are based on the following five incentive measures:

1. Paternity establishment
2. Order establishment
3. Current support collected
4. Cases paying toward arrears
5. Cost effectiveness.

The Child Support Incentive Scorecard on page 93 shows DCS outcomes on the five measures over the past two state fiscal years.

Three types of cases make up the Title IV-D child support cases:

- ✍ **Current Assistance** (individuals receiving TANF or Title IV-E Foster Care)
- ✍ **Former Assistance** (individuals who have ever received TANF/AFDC or Title IV-E Foster Care) and
- ✍ **Never Assistance** (individuals who have never received TANF/AFDC or Title IV-E Foster Care. Medicaid, child care only and State Only Foster Care are also considered Never Assistance.)

Collections on **Current Assistance** and **Former Assistance** cases are given a weight of 2, while **Never Assistance** collections are given a weight of 1. The sum of the three weighted types of collections forms the collection base from which a state's incentives are drawn. By implementing this weighting scheme, the federal Office of Child Support Enforcement recognizes the inherent difficulties in collecting from **Current** and **Former Assistance** cases.

Highlights:

- ✍ **DCS overall performance on the federal Incentive Scorecard measures increased to 89% in SFY 2000**, compared to 81% in SFY 1999.
- ✍ **Child support collections increased to \$586.6 million in SFY 2000**, compared to \$533.3 in SFY 1999.
- ✍ **Child support served an average of 430,350 children per month in SFY 2000.**

Child Support Continued

- ✍ **The average monthly Child Support IV-D caseload decreased slightly in SFY 2000 (322,988 cases)**, compared to SFY 1999 (323,214 cases). The drop in current assistance cases is responsible for most of this decline. Other factors that could contribute to a shrinking caseload include: case closure for those no longer receiving assistance, an aging population, decreasing non-marital births and divorce.
- ✍ **Current Assistance declined by 11,326 cases** from SFY 1999 to SFY 2000, more than 16 percent in one year.
- ✍ **The majority (87.5%) of non-custodial parents is male and 24-39 years old (54.9%).**

Child Support

Exhibit 1 Child Support Incentive Scorecard SFY 1999 and SFY 2000

MEASURE	GOAL (NEEDED TO ATTAIN 100% FUNDING)	PERFORMANCE SFY		PERCENTAGE OF MAXIMUM INCENTIVE REACHED		MAXIMUM VALUE OF INCENTIVE (\$ IN MILLIONS)	INCENTIVE PAYMENT (\$ IN MILLIONS)		
		1999	2000	(A)			(B)	(A * B)	
				1999	2000			1999	2000
1. Paternity Establishment Percentage (PEP)	80%	112%	93%	100%	100%	\$3.10	\$3.10	\$3.10	
2. Order Establishment	80%	87%	89%	100%	100%	\$3.10	\$3.10	\$3.10	
3. Current Support	80%	56%	60%	66%	70%	\$3.10	\$2.05	\$2.17	
4. Arrears Cases Paying	80%	44%	62%	54%	72%	\$2.35	\$1.27	\$1.69	
5. Cost Effectiveness	\$5.00	\$4.47	\$4.75	80%	90%	\$2.35	\$1.88	\$2.12	
TOTAL POTENTIAL INCENTIVES EARNED				80%	86%	\$14.0 million	\$11.4	\$12.2	

Source: Division of Child Support

Note: For illustration purposes only. The first four measures are included in ESA B-11 performance measures. The Incentive Scorecard depicts the way the incentive funding formula would be fully implemented by FFY02 (Child Support Performance and Incentive Act of 1998). For purposes of illustration, we have assumed that the incentive payment share is \$14.3 million. The incentive funding base is multiplied by the maximum values established for the measures, e.g., 1.0 for the first three measures and .75 for the last two measures. Column B shows the product of that calculation. The state's performance level is translated into a percentage of incentive the state can receive, based on its current performance level. That percentage of incentive, Column A, is multiplied times Column B, the maximum value of incentive, which yields the incentive payment to the state or each of the five indicators. The five incentive payments are then summed to determine the state's total incentive earned.

Child Support

Exhibit 2 Child Support Caseload and Collections July 1998 to June 2000

	<u>CHILD SUPPORT CASELOAD</u>				<u>CHILD SUPPORT COLLECTIONS</u>		<u>COLLECTIONS BY CASE TYPE</u>		
	TANF/ FOSTER CARE ¹	FORMER ASST ²	NEVER ASST ³	TOTAL IV-D CASELOAD	ACTUAL	PROJECTED	TANF/ FOSTER CARE ¹	FORMER ASST ²	NEVER ASST ³
JUL 98	77,348	159,077	85,192	321,617	\$44,695,916	\$44,695,916			
AUG	74,962	161,550	85,635	322,147	\$39,391,919	\$39,391,919			
SEPT	73,342	167,265	81,970	322,577	\$42,695,860	\$42,695,860			
OCT	72,282	168,575	82,413	323,270	\$43,052,965	\$43,052,642	\$4,478,729	\$18,524,671	\$20,049,565
NOV	70,182	170,719	82,675	323,576	\$39,646,793	\$39,646,633	\$3,925,766	\$16,774,533	\$18,946,495
DEC	66,583	173,996	82,799	323,378	\$46,571,156	\$46,571,155	\$4,630,845	\$20,110,157	\$21,830,153
JAN 99	68,808	172,612	82,357	323,777	\$39,879,985	\$39,879,985	\$3,761,425	\$17,219,055	\$18,899,505
FEB	67,948	173,537	82,694	324,179	\$40,151,718	\$40,352,088	\$3,735,832	\$17,430,671	\$18,985,215
MAR	66,752	174,373	82,936	324,061	\$52,728,256	\$47,006,871	\$5,494,084	\$24,409,313	\$22,824,859
APR	66,347	174,061	83,224	323,632	\$49,412,531	\$47,219,541	\$4,749,443	\$22,911,607	\$21,751,482
MAY	65,201	174,367	83,699	323,267	\$49,252,466	\$47,270,368	\$4,897,103	\$23,574,165	\$20,781,197
JUNE	63,359	175,642	84,087	323,088	\$45,808,847	\$50,608,089	\$4,125,988	\$20,147,553	\$21,535,306
SFY 99	69,426	170,482	83,307	323,214	\$533,288,411	\$528,391,067			
JUL 99	62,332	175,978	84,273	322,583	\$57,176,480	\$47,103,198	\$5,306,918	\$28,387,091	\$23,482,472
AUG	61,157	177,032	84,444	322,633	\$45,248,352	\$44,996,671	\$3,910,287	\$20,579,749	\$20,758,316
SEPT	60,050	177,732	84,634	322,416	\$44,028,917	\$44,084,704	\$3,623,320	\$19,538,952	\$20,866,645
OCT	59,778	178,121	84,934	322,833	\$45,616,586	\$46,136,073	\$3,816,097	\$20,579,805	\$21,220,684
NOV	58,230	178,937	85,154	322,321	\$44,807,529	\$43,000,404	\$3,663,714	\$20,133,619	\$21,010,197
DEC	56,576	180,327	85,257	322,160	\$47,551,697	\$47,582,635	\$3,816,485	\$21,208,076	\$22,527,135
JAN 00	59,648	177,449	85,861	322,958	\$43,867,138	\$45,657,960	\$3,413,117	\$19,560,277	\$20,893,744
FEB	58,214	179,092	86,101	323,407	\$44,560,229	\$44,025,669	\$3,545,094	\$19,779,336	\$21,235,799
MAR	57,324	179,764	86,583	323,671	\$53,618,219	\$50,654,798	\$4,764,845	\$24,757,118	\$24,096,257
APR	56,575	180,279	87,062	323,916	\$50,027,106	\$50,466,921	\$4,293,066	\$23,599,544	\$22,134,495
MAY	54,297	181,885	87,254	323,436	\$53,710,135	\$51,678,612	\$4,409,168	\$25,428,583	\$23,842,384
JUNE	53,024	182,798	87,694	323,516	\$56,381,945	\$54,331,903	\$4,460,628	\$27,154,345	\$24,766,971
SFY 00	58,100	179,116	85,771	322,988	\$586,594,334	\$569,719,548	\$49,022,739	\$270,706,497	\$266,865,099

Source: Division of Child Support

Note: Case counts are unduplicated

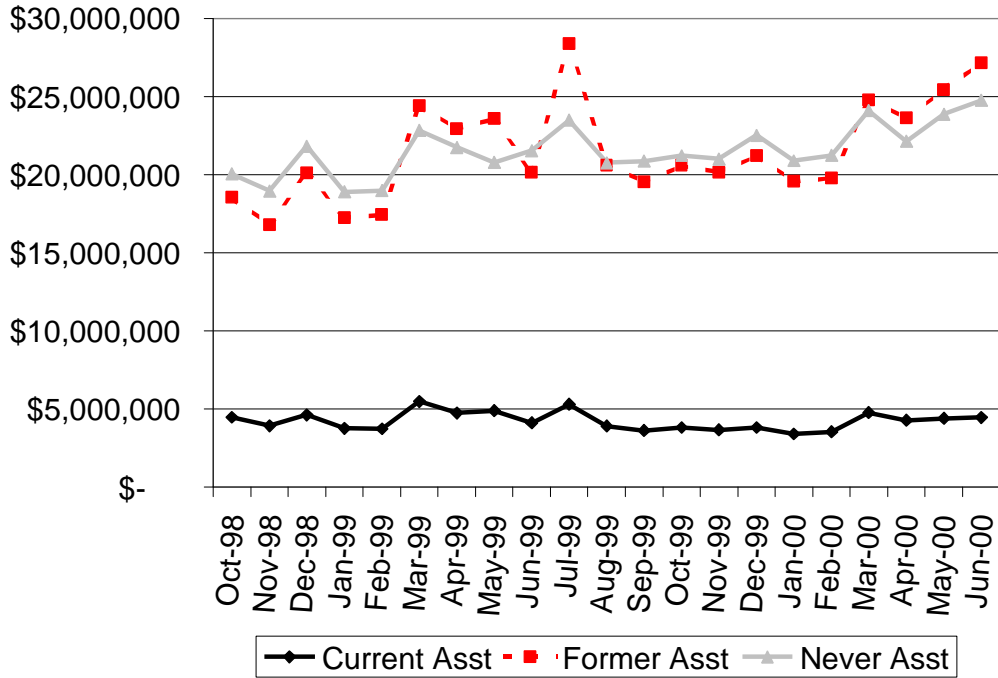
¹ TANF/Foster Care or Current Assistance (TANF or Title IV-E Foster Care)

² Former Assistance (individuals who have ever received TANF/AFDC or Title IV-E Foster Care); and

³ Never Assistance (individuals who have never received TANF/AFDC or Title IV-E. Medicaid only, child care only and State Only Foster Care are considered Never Assistance). Payment Service Only and medical and subrogated debt cases are excluded from Title IV-D cases.

Child Support

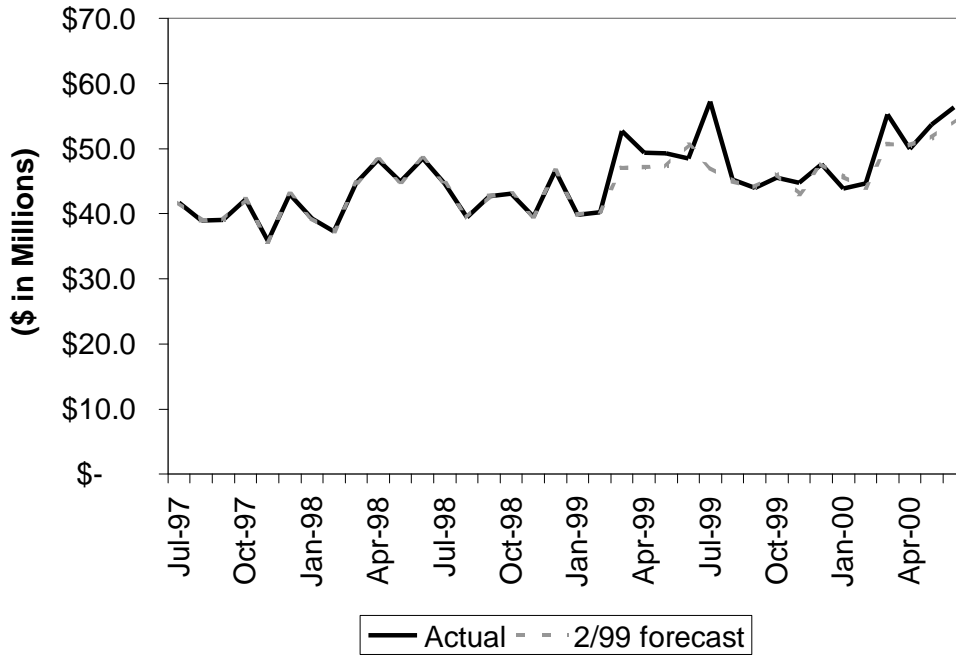
Exhibit 3
Child Support Caseload by Type
 October 1998 to June 2000



Source: Division of Child Support

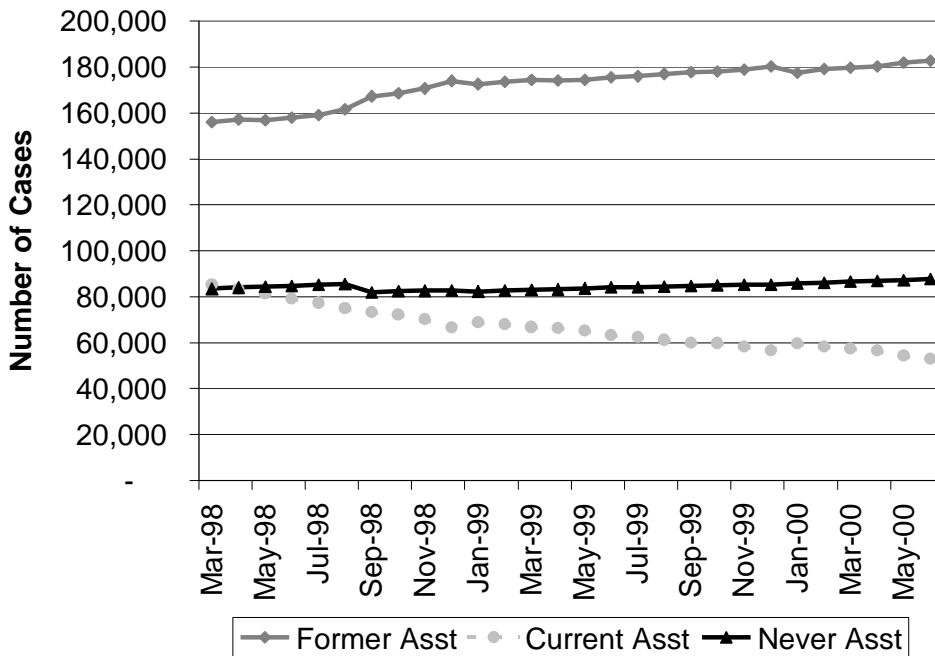
Child Support

Exhibit 4
Child Support Collections
 Actual and Projected – SFY 1999 to SFY 2000



Source: Division of Child Support

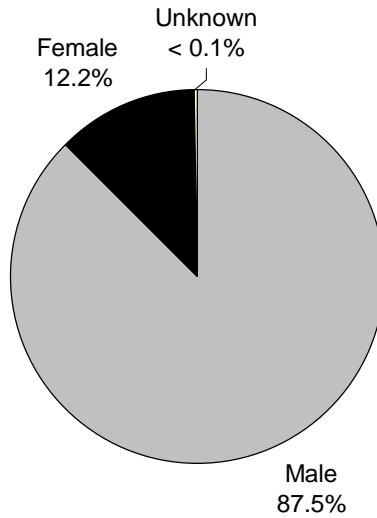
Exhibit 5
Child Support Collections by Case Type
 March 1998 to June 2000



Source: Division of Child Support

Child Support

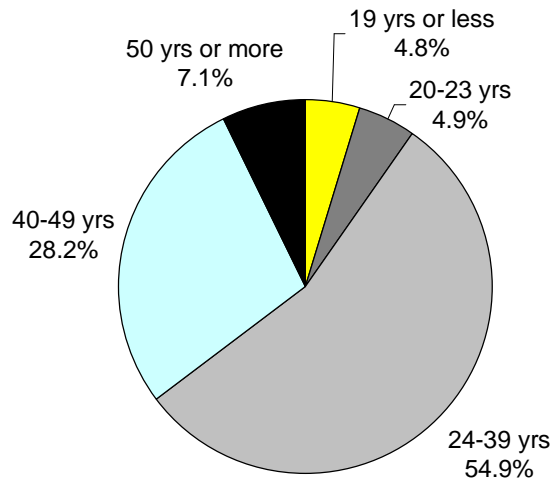
Exhibit 6
Non-Custodial Parents by Gender
August 2000



Source: Division of Child Support

Note: The noncustodial parent is the parent (mother, father, or reputed father) who is now or eventually may be obligated under the law for the support of a child or children receiving services under the Title IV-D child support program.

Exhibit 7
Non-Custodial Parents by Age
August 2000



Source: Division of Child Support

Note: The non-custodial parent is the parent (mother, father, or reputed father) who is now or eventually may be obligated under the law for the support of a child or children receiving services under the Title IV-D child support program.