

TANF/WorkFirst Program

Exhibits	Page
1. Selected TANF Program Characteristics SFY 1999 and SFY 2000	52
2. TANF Cases (Chart) SFY 1998 to SFY 2000	53
3. TANF Cases (Table) SFY 1998 to SFY 2000	53
4. TANF Applications (Chart) SFY 1999 to SFY 2000	54
5. TANF Applications (Table) SFY 1999 to SFY 2000	54
6. Cases Entering, Exiting, and Re-Entering TANF As a Percent of the Total Caseload (Chart) SFY 1999 to SFY 2000	55
7. Cases Entering, Exiting, and Re-Entering TANF As a Percent of the Total Caseload (Table) SFY 1999 to SFY 2000	55
8. Adults Returning to TANF Six Months After Exit (Chart) SFY 1999 to SFY 2000	56
9. Adults Returning to TANF Six Months After Exit (Table) SFY 1999 to SFY 2000	56
10. Clients Receiving the Early Exit Bonus April 2000 through September 2000 (Chart).....	57
11. Clients Receiving the Early Exit Bonus April 2000 through September 2000 (Table).....	57
12. Clients Receiving the Early Exit Bonus by Case Type April 2000 Through September 2000 (Chart).....	58
13. Clients Receiving the Early Exit Bonus by Case Type April 2000 Through September 2000 (Table).....	58
14. Percent of TANF Cases by Number of Adults (Chart) SFY 1999 to SFY 2000	59

TANF/WorkFirst Program

15.	TANF Cases by Number of Adults SFY 2000	59
16.	Percent of TANF Cases by Number of Children SFY 1999 to SFY 2000	60
17.	TANF Cases by Number of Children SFY 2000	60
18.	Percent of TANF Cases with Teen Heads of Household SFY 1998 to SFY 2000	61
19.	TANF Cases with Teen Heads of Household SFY 2000	61
20.	Percent of TANF Cases with Pregnant Women and Children 12 Months or Younger SFY 1999 to SFY 2000	62
21.	TANF Cases with Pregnant Women and Children 12 Months or Younger SFY 2000	62
22.	Percent of TANF Adults SFY 1999 to SFY 2000	63
23.	Employed TANF Adults SFY 1999 to SFY 2000.....	63
24.	Percent of TANF Cases with Adults in WorkFirst Sanction SFY 1999 to SFY 2000	64
25.	TANF Cases with Adults in WorkFirst Sanction By Consecutive Months in Sanction Status SFY 2000.....	64
26.	Average Monthly WorkFirst Adults and Their Participation Status SFY 2000.....	65
27.	Average Monthly WorkFirst Adults and Their Participation Status SFY 2000.....	65
28.	Average Monthly WorkFirst Adults Not Ready To Participate in WorkFirst Activities SFY 2000	66
29.	Average Monthly WorkFirst Adults Not Ready to Participate SFY 2000	66
30.	WorkFirst Participation Rates and Targets Of Those Adults Ready to Participate SFY 2000.....	67

TANF/WorkFirst Program

31.	WorkFirst Participation Rates and Targets Of Those Adults Ready to Participate SFY 2000.....	67
32.	TANF Employment Entries (Chart) SFY 1999 to SFY 2000	68
33.	TANF Employment Entries (Table) SFY 1999 to SFY 2000	68
34a.	TANF Client (Adults and Children) Demographics July 2000	69
34b.	TANF Client (Adults and Children) Demographics July 2000	70
35.	Estimates of TANF Families Reaching 60 Months On Assistance in August 2002 and August 20003.....	71
36.	Families With Long Term TANF Clients Served by Other DSHS Divisions During SFY 1999.....	72
37.	Percent of Adults on TANF By Months on Assistance, as of July 2000	73
38.	Number of Months Adults Have Been Continuously On TANF Since July 1997 as of July 2000.....	73
39.	Percent of Exemptions for Adults Who Have Been Continuously on TANF for 36 Months as of July 2000.....	74
40.	All TANF Adults Compared to Adults Who Have Been Continuously on TANF for 36 Months; Exemptions As of July 2000	74
41a.	All TANF Adults Compared to Adults Who Have Been Continuously on TANF for 36 Months; Demographics as of July 2000	75
41b.	All TANF Adults Compared to Adults Who Have Been Continuously on TANF for 36 Months; Demographics as of July 2000	76

TANF/WorkFirst Program

TANF and WorkFirst

The exhibits in this section summarize the TANF and WorkFirst caseload trends for SFY 2000.

In the following exhibits, we include both federally-funded TANF and state-funded SFA cases, unless otherwise noted.

Highlights:

- ✍ **Washington's TANF/WorkFirst average monthly caseload declined to 58,722 in SFY 2000**, from a monthly average of 62,247 in SFY 1999. In June 2000, the caseload was lower still, at 55,369 cases.
- ✍ **The average payment per case in SFY 2000 was \$441.54.**
- ✍ **Child-only cases increased to 28.1% of the total TANF caseload** in June 2000, compared to 19.1% in July 1998.
- ✍ **Single-parent cases declined to 60.2% in June 2000**, compared to 69% of the total TANF caseload in July 1998.
- ✍ **Two-parent cases stayed about the same, at 11.8% of the TANF caseload in June 2000**, and 11.9% in July 1998.
- ✍ **In June 2000, 5% of TANF cases with adults were in sanction status.**
- ✍ **ESA estimates that in August 2002, approximately 8% of TANF cases may have an adult who reaches 60 months of TANF**, the time limit under welfare reform.
- ✍ **In April 2000, 17.7% of TANF Adults returned six months after an exit**, compared to 18% in April 1999. The percentage has ranged from a high of 21.3% to a low of 16.7% in SFY 2000.
- ✍ **In July 2000, the majority of TANF adult clients was female (80.6%), white (65.9%), and never married (43.6%). The median age for an adult was 30.2 years.**

TANF/WorkFirst Program

Exhibit 1 Selected TANF Program Characteristics SFY 1999 and SFY 2000

	SFY99 (July 98 - June 99)	SFY00 (July 99 - June 00)
Average Number of <u>Cases</u> Per Month (Range) ¹	67,247 (61,011 - 75,305)	58,722 (55,360 – 60,057)
Average Number of <u>Persons</u> Per Month (Range) ¹	183,510 (165,384 - 206,109)	158,387 (147,681–162,864)
Average Number of <u>Adults</u> Per Month (Range) ¹	59,149 (51,948 – 68,182)	50,218 (46,235 – 52,024)
Average Number of <u>Children</u> Per Month (Range) ¹	123,131 (112,455 - 136,525)	108,168 (101,446 –111,181)
Recipients as a Percent of State's Total Population	3.2%	2.7%
Total Population ²	5,757,400	5,803,400
Children as a Percent of Recipients	67.1%	68.3%
Average Persons Per Case	2.7	2.7
Average Children Per Case	1.8	1.8
Average Children Per Adult	2.0	2.2
Average Monthly Payment Per <u>Case</u> (Range) ^{1 3}	\$433.87 (\$426.75 - \$441.99)	\$441.54 (\$430.94 - \$446.09)

Note: The TANF cases for May 1999 and later have been adjusted to include cases formerly in the General Assistance for Pregnant Women Program (GA-S). These cases have been paid TANF funds since May 1999.

¹ Source: CARD Clients, Persons, and Expenditures Report.

² Source: OFM 2000 Population Trends.

³ Payments are not adjusted for refunds.

TANF/WorkFirst Program

Exhibit 2
TANF Cases
SFY 1998 to SFY 2000

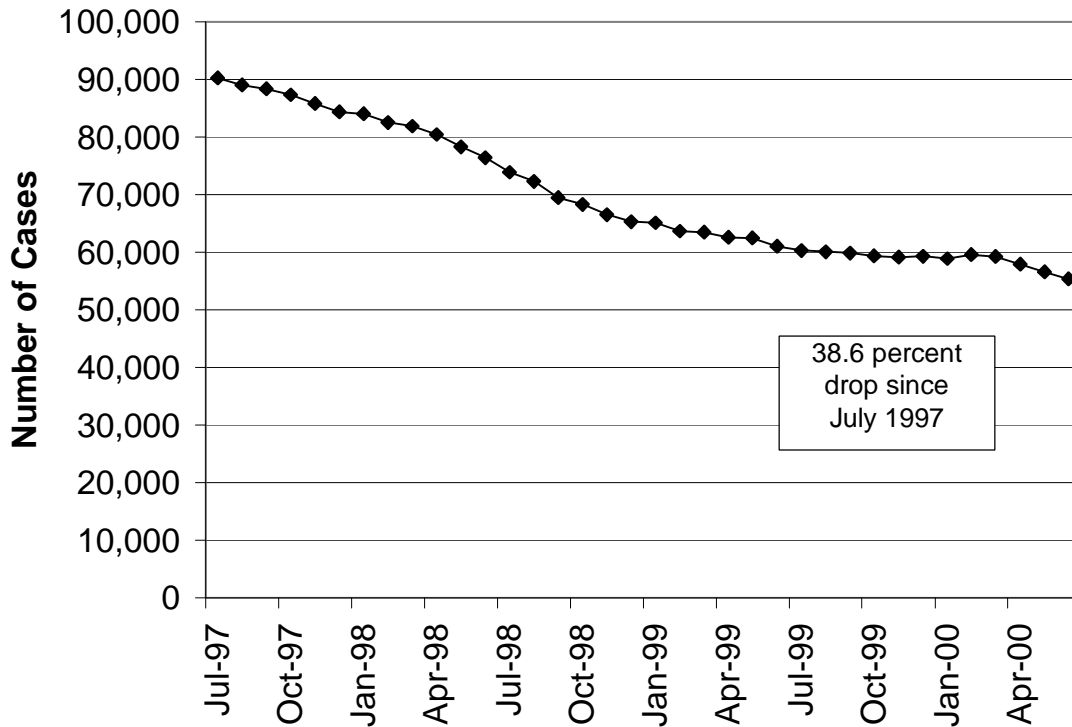


Exhibit 3
TANF Cases
SFY 1998 to SFY 2000

	SFY98	SFY99	SFY00
July	90,205	73,851	60,296
August	88,988	72,288	60,054
September	88,363	69,428	59,827
October	87,301	68,281	59,346
November	85,761	66,486	59,124
December	84,326	65,307	59,290
January	84,000	65,099	58,877
February	82,474	63,639	59,563
March	81,876	63,449	59,254
April	80,410	62,558	57,927
May	78,276	62,444	56,562
June	76,386	61,027	55,369

Source: CARD Clients, Persons, and Expenditures Report.

Note: Caseload counts may differ slightly from counts in other tables due to month-to-month changes in the CARD database.

TANF/WorkFirst Program

Exhibit 4
TANF Applications
SFY 1999 to SFY 2000

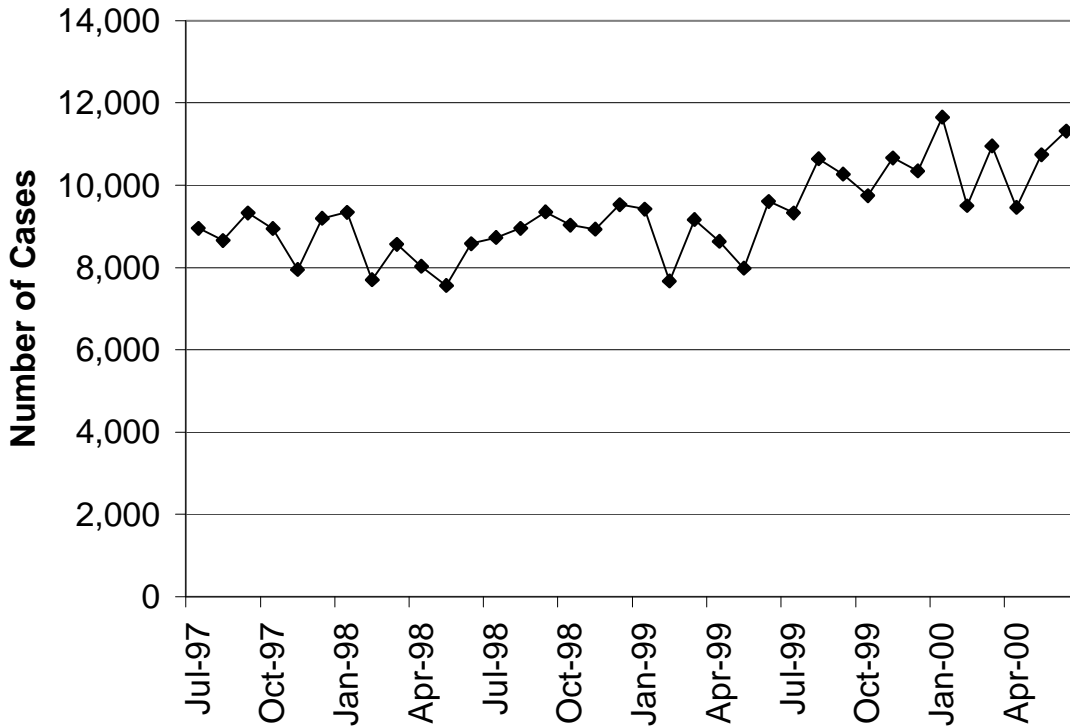


Exhibit 5
TANF Applications
SFY 1998 to SFY 2000

	SFY98	SFY99	SFY00
July	8,955	8,728	9,328
August	8,659	8,952	10,637
September	9,330	9,348	10,269
October	8,944	9,029	9,742
November	7,949	8,930	10,662
December	9,191	9,524	10,350
January	9,344	9,423	11,656
February	7,702	7,675	9,503
March	8,566	9,168	10,953
April	8,027	8,633	9,458
May	7,561	7,985	10,744
June	8,578	9,604	11,319

Source: MRDA caseload tracking using the CARD database.
Note: Applications were identified using application dates in the ACES system. All applications entered into ACES are counted, including new cases, closed cases reapplying for benefits and clients added to open cases.

TANF/WorkFirst Program

Exhibit 6

Cases Entering, Exiting, and Re-Entering TANF
as a Percent of the Total Caseload, SFY 1999 to SFY 2000

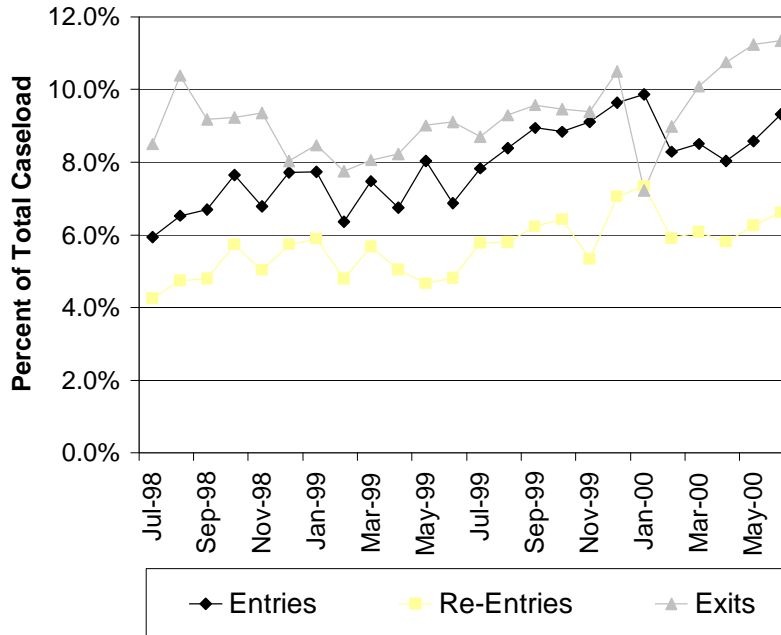


Exhibit 7

Cases Entering, Re-Entering, and Exiting TANF
as a Percent of the Total Caseload. SFY 2000

Month	Caseload ¹	Entries		Re-Entries		Exits	
		Number	Percent	Number	Percent	Number	Percent
Jul-98	73,845	4,383	5.9%	3,134	71.5%	6,282	8.5%
Jul-99	59,464	4,890	8.2%	3,541	72.4%	5,181	8.7%
Aug-99	60,047	5,758	9.6%	3,759	65.3%	5,583	9.3%
Sep-99	59,821	5,353	8.9%	3,725	69.6%	5,727	9.6%
Oct-99	59,342	5,245	8.8%	3,736	71.2%	5,615	9.5%
Nov-99	59,119	5,388	9.1%	3,950	73.3%	5,551	9.4%
Dec-99	58,952	5,410	9.2%	3,371	62.3%	6,155	10.4%
Jan-00	58,865	5,806	9.9%	4,314	74.3%	4,252	7.2%
Feb-00	59,555	4,938	8.3%	3,513	71.1%	5,352	9.0%
Mar-00	59,244	5,039	8.5%	3,598	71.4%	5,986	10.1%
Apr-00	57,913	4,654	8.0%	3,355	72.1%	6,222	10.7%
May-00	56,544	4,851	8.6%	3,532	72.8%	6,352	11.2%
Jun-00	55,358	5,162	9.3%	3,663	71.0%	6,271	11.3%

Source: MRDA caseload tracking using the CARD database.

Note: Entries are defined as cases that were not on TANF the month prior to what is reported. Exits are defined as cases that received a benefit in the month reported, but not in the subsequent month. Re-entries are defined as cases that have been off TANF at least one month before entering TANF. For example, it is possible that a re-entry case could be on in June, off in July, and back on in August, a break of one month.

¹ Caseload counts may differ slightly from counts in other tables due to month-to-month changes in the CARD database.

TANF/WorkFirst Program

Exhibit 8
Adults Returning to TANF Six Months After Exit
SFY 1999 to SFY 2000

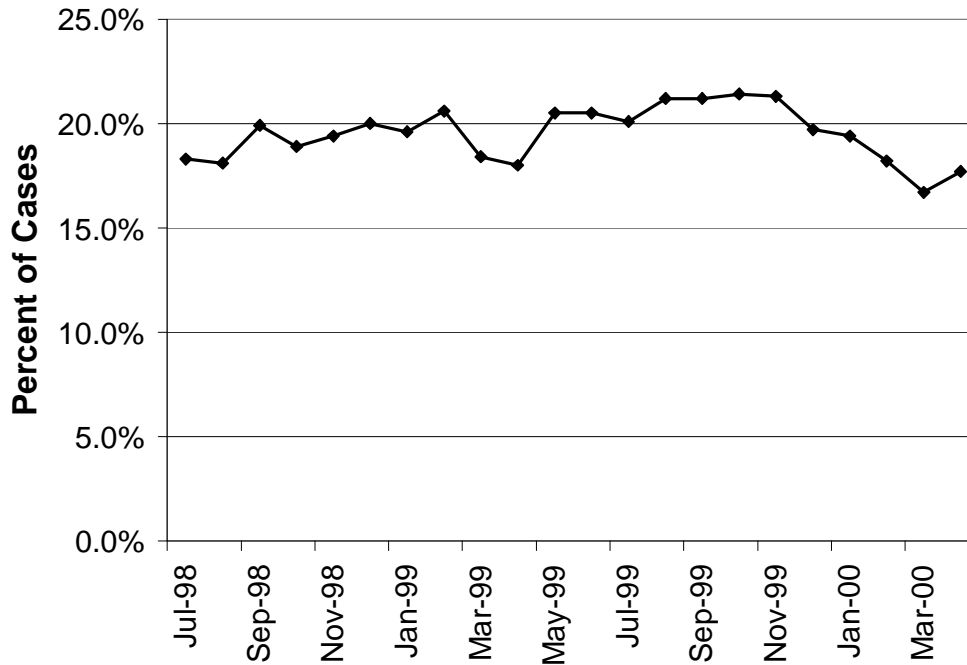


Exhibit 9
Adults Returning to TANF Six Months After Exit
SFY 1999 to SFY 2000

	SFY99			SFY00		
	Exits ¹	Return After 6 Mos		Exits ¹	Return After 6 Mos	
July	7,362	1,344	18.3%	5,595	1,125	20.1%
August	6,774	1,227	18.1%	5,483	1,163	21.2%
September	7,962	1,588	19.9%	5,886	1,247	21.2%
October	6,796	1,284	18.9%	6,092	1,303	21.4%
November	6,662	1,290	19.4%	5,904	1,259	21.3%
December	6,768	1,352	20.0%	6,026	1,189	19.7%
January	5,577	1,091	19.6%	6,648	1,287	19.4%
February	5,995	1,237	20.6%	4,559	829	18.2%
March	5,153	947	18.4%	5,871	978	16.7%
April	5,513	995	18.0%	6,258	1,110	17.7%
May	5,493	1,124	20.5%			
June	6,098	1,248	20.5%			

Source: OFM Performance Measures using AFARRAYS file. Does not include GA-S.

¹ Exits are defined as adults who received a benefit in the month reported, but not in the subsequent month. Returns are adults who were back on TANF six months after the exit.

TANF/WorkFirst Program

Exhibit 10
 Clients Receiving the Early Exit Bonus
 April 2000 through September 2000

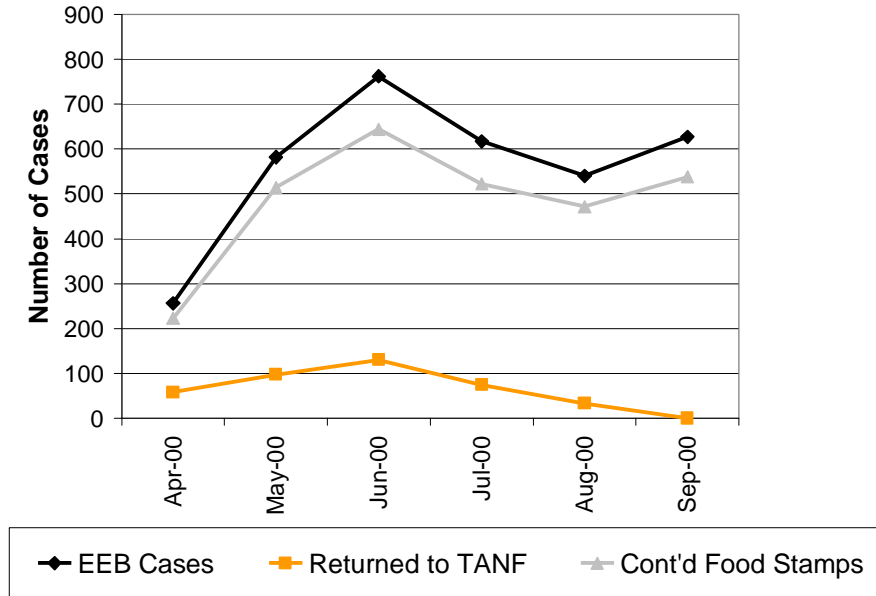


Exhibit 11
 Clients Receiving the Early Exit Bonus
 April 2000 through September 2000

	EEB Count	Returned to TANF As of Sep. 2000 ¹			Continued Food Stamps ²	
		Number	Percent	Average Months Off	Number	Percent
Apr 00	256	58	22.7%	3.07	223	87.1%
May 00	582	97	16.7%	2.30	514	88.3%
Jun 00	762	130	17.1%	1.94	644	84.5%
Jul 00	617	75	12.2%	1.48	522	84.6%
Aug 00	540	33	6.1%	1.00	472	87.4%
Sep 00	627	0	0.0%	0.00	538	85.8%

Source: MRDA caseload tracking using the CARD database.

Note: The Early Exit Bonus (EEB) began in April 2000 and is a once in a lifetime \$1,000 payment to clients with earnings who leave TANF. The EEB is an incentive for clients to remain self-sufficient.

¹ Returned to TANF includes clients who received TANF in any month after receiving the Early Exit Bonus.

² Continued Food Stamps includes clients who received Food Stamps in the same month as the Early Exit Bonus regardless of whether they received Food Stamps in subsequent months.

TANF/WorkFirst Program

Exhibit 12

Clients Receiving the Early Exit Bonus, by Case Type
April 2000 through September 2000

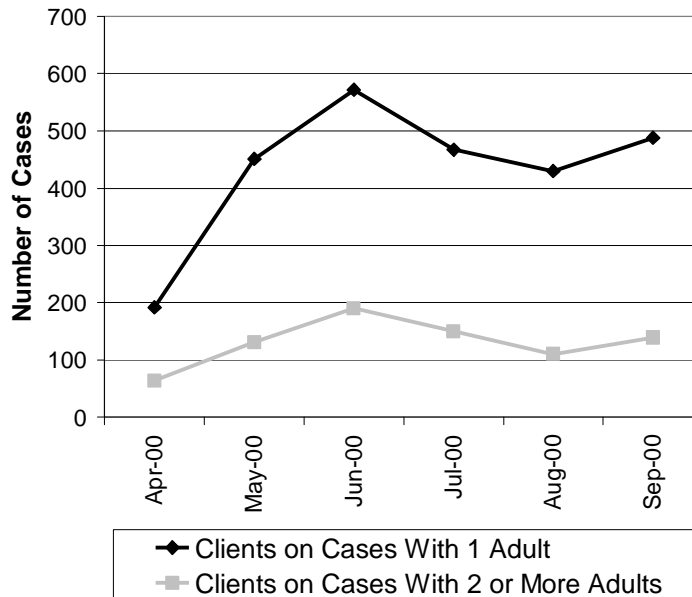


Exhibit 13

Clients Receiving the Early Exit Bonus, by Case Type¹
April 2000 through September 2000

	Clients on Cases With 1 Adult		Clients on Cases With 2 or More Adults	
	Number	Percent	Number	Percent
Apr 00	192	75.0%	64	25.0%
May 00	451	77.5%	131	22.5%
Jun 00	572	75.1%	190	24.9%
Jul 00	467	75.7%	150	24.3%
Aug 00	430	79.6%	110	20.4%
Sep 00	488	77.8%	139	22.2%

Source: MRDA caseload tracking using the CARD database.

Note: The Early Exit Bonus (EEB) began in April 2000 and is a once-in-a-lifetime \$1,000 payment to clients with earnings who leave TANF. The EEB is an incentive for clients to remain self-sufficient.

¹ The case type is the number of adult recipients (including teen parents) on the case.

TANF/WorkFirst Program

Exhibit 14
Percent of TANF Cases by Number of Adults
SFY 1999 to SFY 2000

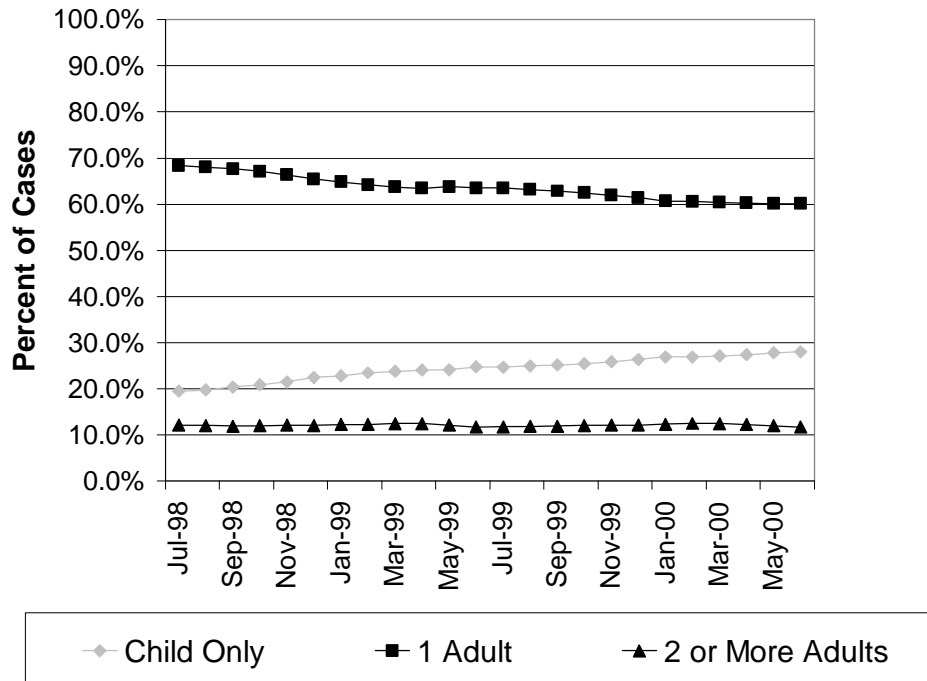


Exhibit 15
TANF Cases by Number of Adults
SFY 2000

	Caseload ¹	Child Only		1 Adult		2 or More Adults	
		Number	Percent	Number	Percent	Number	Percent
Jul-98	73,845	14,388	19.1%	51,944	69.0%	8,967	11.9%
Jul-99	60,286	14,889	24.7%	38,286	63.5%	7,111	11.8%
Aug-99	60,049	14,981	24.9%	37,942	63.2%	7,126	11.9%
Sep-99	59,821	15,072	25.2%	37,600	62.9%	7,149	12.0%
Oct-99	59,342	15,108	25.5%	37,074	62.5%	7,160	12.1%
Nov-99	59,119	15,329	25.9%	36,601	61.9%	7,189	12.2%
Dec-99	59,283	15,626	26.4%	36,426	61.4%	7,231	12.2%
Jan-00	58,868	15,854	26.9%	35,717	60.7%	7,297	12.4%
Feb-00	59,552	16,011	26.9%	36,082	60.6%	7,459	12.5%
Mar-00	59,243	16,052	27.1%	35,791	60.4%	7,400	12.5%
Apr-00	57,921	15,892	27.4%	34,899	60.3%	7,130	12.3%
May-00	56,543	15,755	27.9%	33,998	60.1%	6,790	12.0%
Jun-00	55,351	15,539	28.1%	33,303	60.2%	6,509	11.8%

Source: MRDA caseload tracking using the CARD database.

Note: Cases are grouped according to the number of adult recipients on a case. Adults include teen parents. No adjustments are made for disabled adults.

¹ Caseload counts may differ slightly from counts in other tables due to month-to-month changes in the CARD database.

TANF/WorkFirst Program

Exhibit 16
Percent of TANF Cases by Number of Children
SFY 1999 to SFY 2000

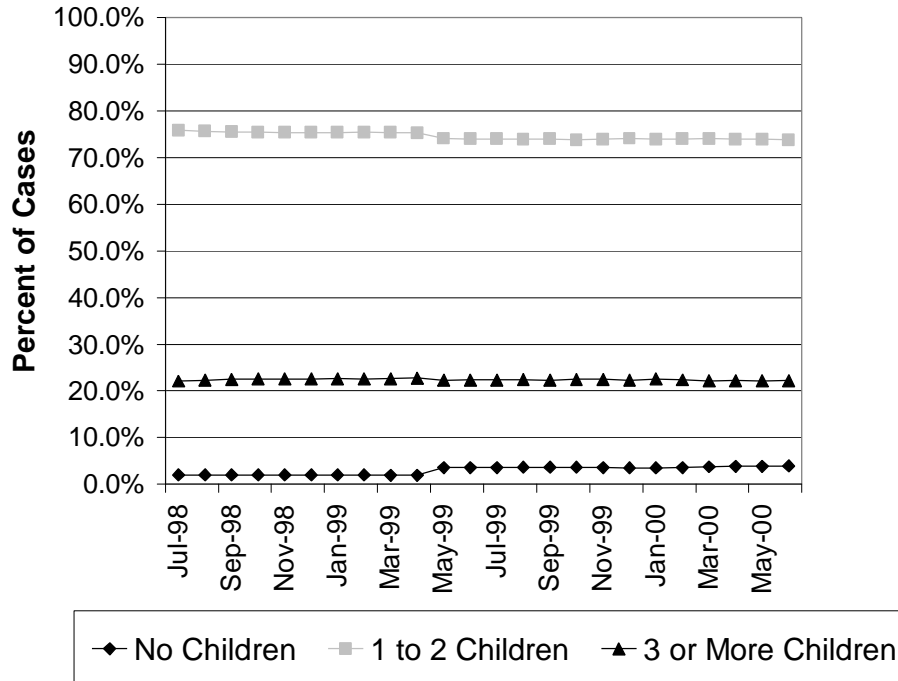


Exhibit 17
TANF Cases by Number of Children
SFY 2000

	Caseload ¹	No Children ²		1 to 2 Children		3 or More Children	
		Number	Percent	Number	Percent	Number	Percent
Jul-98	73,845	1,479	2.0%	56,031	75.9%	16,335	22.1%
Jul-99	60,286	2,160	3.6%	44,631	74.0%	13,495	22.4%
Aug-99	60,048	2,183	3.6%	44,379	73.9%	13,486	22.5%
Sep-99	59,819	2,188	3.7%	44,271	74.0%	13,360	22.3%
Oct-99	59,341	2,184	3.7%	43,811	73.8%	13,346	22.5%
Nov-99	59,119	2,137	3.6%	43,697	73.9%	13,285	22.5%
Dec-99	57,713	2,049	3.6%	42,767	74.1%	12,897	22.3%
Jan-00	58,864	2,081	3.5%	43,509	73.9%	13,274	22.6%
Feb-00	59,555	2,161	3.6%	44,058	74.0%	13,336	22.4%
Mar-00	59,242	2,226	3.8%	43,871	74.1%	13,145	22.2%
Apr-00	57,911	2,249	3.9%	42,797	73.9%	12,865	22.2%
May-00	56,544	2,207	3.9%	41,797	73.9%	12,540	22.2%
Jun-00	55,360	2,202	4.0%	40,860	73.8%	12,298	22.2%

Source: MRDA caseload tracking using the CARD database.

Note: Cases are grouped according to the number of children recipients on a case. The TANF cases for May 1999 and later have been adjusted to include cases formerly in the General Assistance for Pregnant Women Program (GA-S).

¹ Caseload counts may differ slightly from counts in other tables due to month-to-month changes in the CARD database.

² On cases where the only children eligible for TANF already receive SSI, the child does not receive a TANF payment but the parent does receive a TANF payment. Also, a pregnant woman with no child is eligible for TANF.

TANF/WorkFirst Program

Exhibit 18
Percent of TANF Cases with Teen Heads of Household
SFY 1998 to SFY 2000

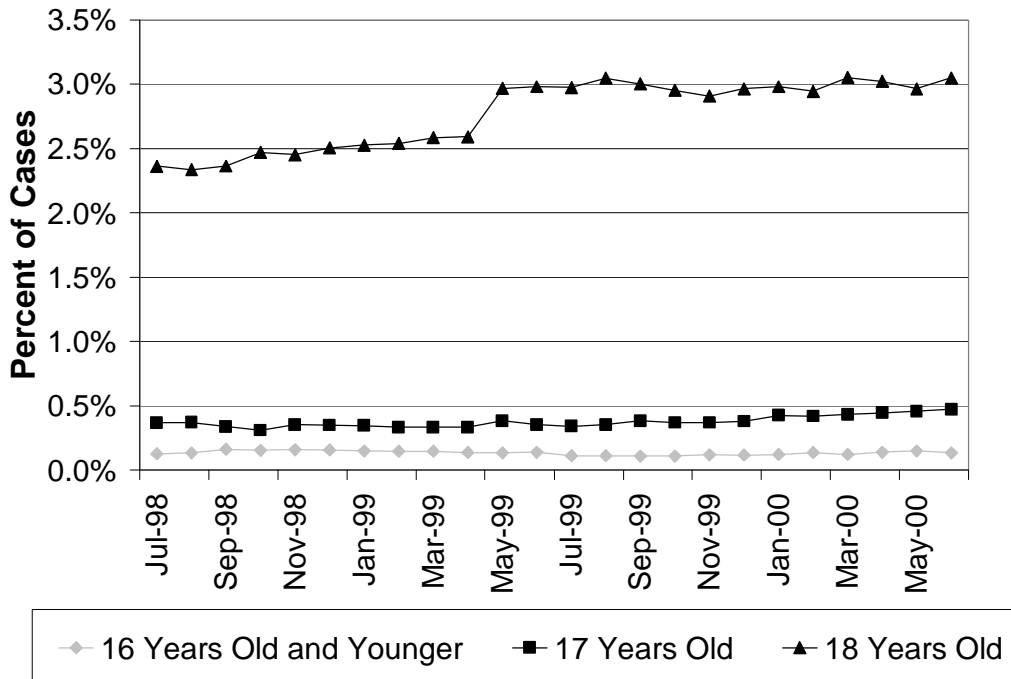


Exhibit 19
TANF Cases with Teen Heads of Household
SFY 2000

	Cases with Adults	Head of Household is 16 Years Old or Less		Head of Household is 17 Years Old		Head of Household is 18 Years Old	
Jul-98	59,458	76	0.1%	219	0.4%	1,405	2.4%
Jul-99	45,397	52	0.1%	155	0.3%	1,350	3.0%
Aug-99	45,067	51	0.1%	160	0.4%	1,373	3.0%
Sep-99	44,749	49	0.1%	172	0.4%	1,343	3.0%
Oct-99	44,234	49	0.1%	164	0.4%	1,306	3.0%
Nov-99	43,790	53	0.1%	162	0.4%	1,273	2.9%
Dec-99	43,657	51	0.1%	166	0.4%	1,294	3.0%
Jan-00	43,013	53	0.1%	183	0.4%	1,282	3.0%
Feb-00	43,541	60	0.1%	183	0.4%	1,282	2.9%
Mar-00	43,191	53	0.1%	187	0.4%	1,318	3.1%
Apr-00	42,029	59	0.1%	188	0.4%	1,270	3.0%
May-00	40,788	61	0.1%	187	0.5%	1,209	3.0%
Jun-00	39,812	54	0.1%	188	0.5%	1,214	3.0%

Source: Source: MRDA caseload tracking using the CARD database. Adults include teen parents.
Note: TANF living arrangements and school attendance requirements apply to those under age 18.

TANF/WorkFirst Program

Exhibit 20
Percent of TANF Cases with Pregnant Women and
Children 12 Months or Younger
SFY 1999 to SFY 2000

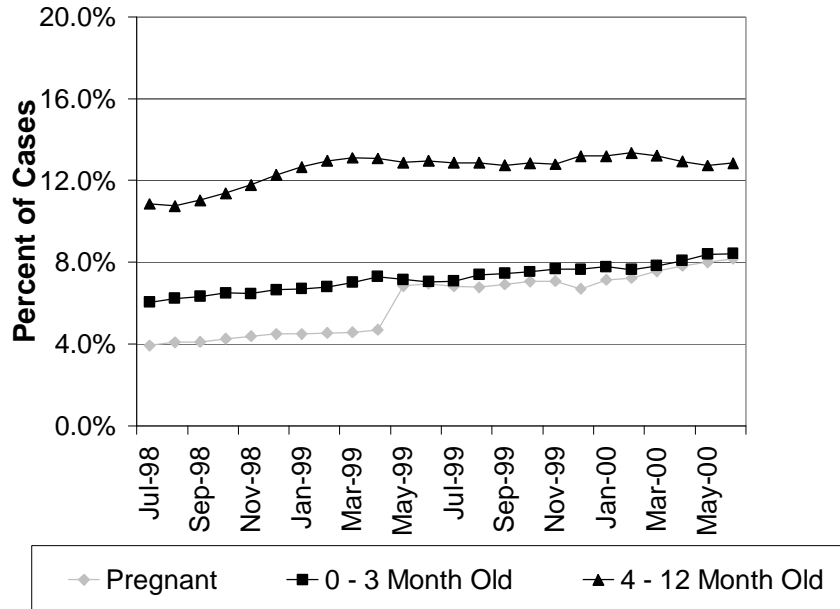


Exhibit 21
TANF Cases with Pregnant Women and
Children 12 Months or Younger
SFY 2000

	Cases with Adults	Pregnant ¹		0 - 3 Month Old Child		4 - 12 Month Old Child	
Jul-98	59,458	2,336	3.9%	3,588	6.0%	6,449	10.8%
Jul-99	45,397	3,094	6.8%	3,211	7.1%	5,840	12.9%
Aug-99	45,067	3,050	6.8%	3,326	7.4%	5,796	12.9%
Sep-99	44,749	3,089	6.9%	3,329	7.4%	5,700	12.7%
Oct-99	44,234	3,120	7.1%	3,331	7.5%	5,679	12.8%
Nov-99	43,790	3,092	7.1%	3,352	7.7%	5,600	12.8%
Dec-99	43,657	2,919	6.7%	3,341	7.7%	5,759	13.2%
Jan-00	43,013	3,065	7.1%	3,345	7.8%	5,675	13.2%
Feb-00	43,541	3,142	7.2%	3,325	7.6%	5,809	13.3%
Mar-00	43,191	3,263	7.6%	3,380	7.8%	5,703	13.2%
Apr-00	42,029	3,286	7.8%	3,389	8.1%	5,430	12.9%
May-00	40,788	3,257	8.0%	3,417	8.4%	5,192	12.7%
Jun-00	39,812	3,251	8.2%	3,352	8.4%	5,115	12.8%

Source: MRDA caseload tracking using the CARD database.

Note: Cases are unduplicated across groups. If a case has multiple young children or a pregnant recipient and a young child, the case category reflects the youngest child. Adults include teen parents.

¹ Pregnant women were identified using pregnancy status data entered in ACES.

TANF/WorkFirst Program

Exhibit 22
Percent of Employed TANF Adults
SFY 1999 to SFY 2000

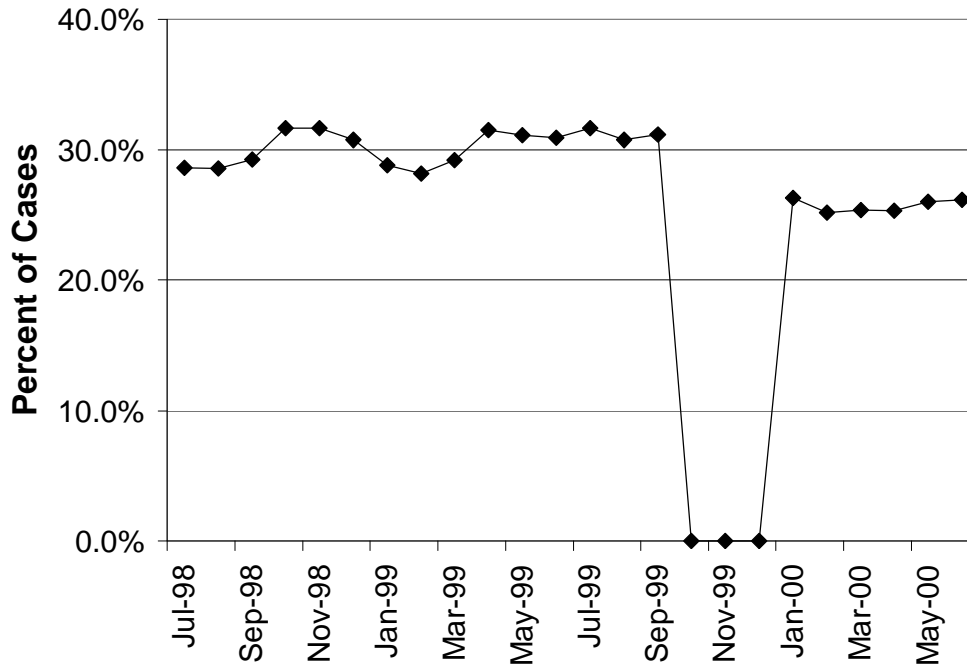


Exhibit 23
Employed TANF Adults
SFY 1999 to SFY 2000

	SFY99			SFY00		
	Adults	Employed		Adults	Employed	
July	68,422	19,580	28.6%	52,473	16,614	31.7%
August	66,711	19,058	28.6%	52,180	16,040	30.7%
September	63,567	18,584	29.2%	51,886	16,165	31.2%
October	62,222	19,682	31.6%	51,380	Unknown ¹	0.0%
November	60,242	19,047	31.6%	50,982	Unknown ¹	0.0%
December	58,537	17,990	30.7%	50,880	Unknown ¹	0.0%
January	58,242	16,783	28.8%	50,302	13,239	26.3%
February	56,504	15,919	28.2%	50,986	12,841	25.2%
March	56,274	16,426	29.2%	50,578	12,817	25.3%
April	55,309	17,422	31.5%	49,148	12,452	25.3%
May	54,916	17,072	31.1%	47,582	12,366	26.0%
June	53,066	16,404	30.9%	46,319	12,120	26.2%

Source: MRDA caseload tracking using the CARD database. Adults include teen parents.

Note: Employment is identified using data in the ACES system.

¹ In January 2000, ESA switched from retrospect budgeting to prospective budgeting. Because of that change, October 1999 – December 1999 income was not used to budget benefit amounts. Therefore, employment data for those months is considered unreliable.

TANF/WorkFirst Program

Exhibit 24
Percent of TANF Cases With Adults in WorkFirst Sanction
SFY 1999 to SFY 2000

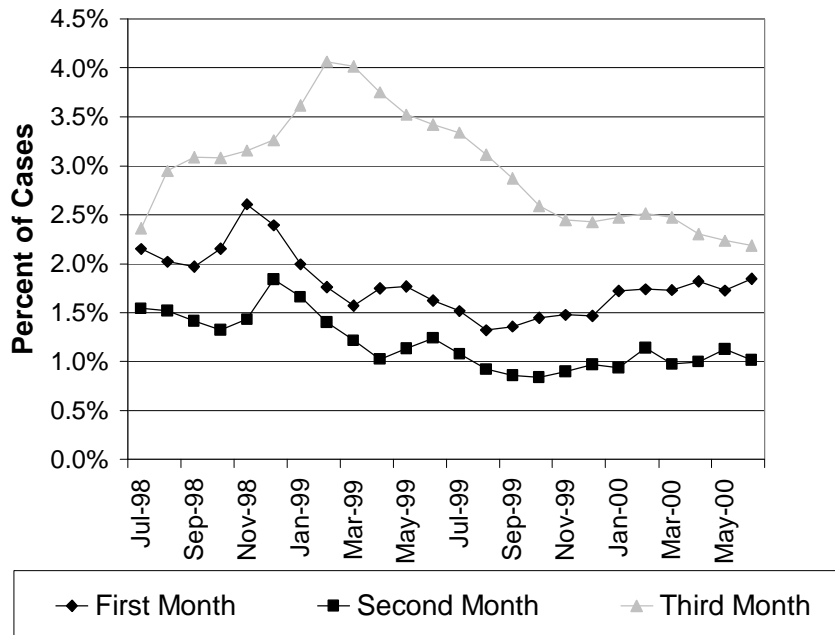


Exhibit 25
TANF Cases with Adults in WorkFirst Sanction
by Consecutive Months in Sanction Status
SFY 2000

	Cases with Sanctioned Adults	Cases with Sanctioned Adults	First Month	Second Month	Third Month Or Later			
Jul-98	59,458	3,602	1,279	2.2%	918	1.5%	1,405	2.4%
Jul-99	45,397	2,695	689	1.5%	490	1.1%	1,516	3.3%
Aug-99	45,067	2,415	595	1.3%	416	0.9%	1,404	3.1%
Sep-99	44,749	2,277	608	1.4%	384	0.9%	1,285	2.9%
Oct-99	44,234	2,158	640	1.4%	371	0.8%	1,147	2.6%
Nov-99	43,790	2,113	647	1.5%	394	0.9%	1,072	2.4%
Dec-99	43,657	2,124	641	1.5%	424	1.0%	1,059	2.4%
Jan-00	43,013	2,207	741	1.7%	403	0.9%	1,063	2.5%
Feb-00	43,541	2,347	757	1.7%	496	1.1%	1,094	2.5%
Mar-00	43,191	2,237	748	1.7%	421	1.0%	1,068	2.5%
Apr-00	42,029	2,154	765	1.8%	420	1.0%	969	2.3%
May-00	40,788	2,075	704	1.7%	459	1.1%	912	2.2%
Jun-00	39,812	2,011	736	1.8%	404	1.0%	871	2.2%

Source: MRDA caseload tracking using the CARD database. Adults include teen parents.

TANF/WorkFirst Program

Exhibit 26
Average Monthly WorkFirst Adults and Their Participation Status
SFY 2000

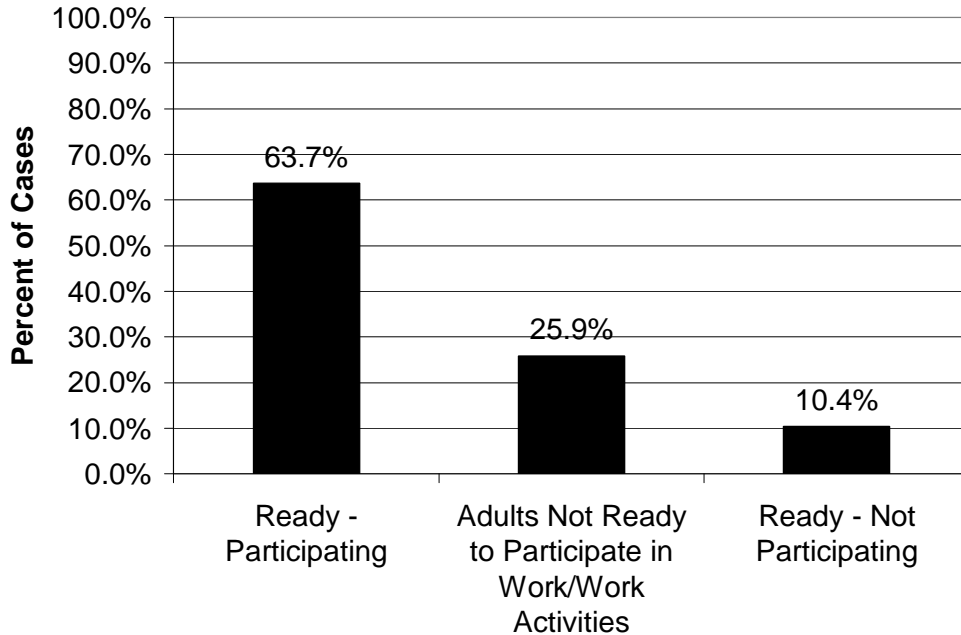


Exhibit 27
Average Monthly WorkFirst Adults and Their Participation Status
SFY 2000

	Adults	Percent of Total WF Adults
Total Number of WorkFirst Adults	41,222	100.0%
Adults Not Ready to Participate in Work/Work Activities	10,661	25.9%
Adults Ready to Participate	30,561	74.1%
Ready - <u>Not</u> Participating	4,291	10.4%
No Countable Activity	2,290	5.6%
Referral Only	1,499	3.6%
Long Term Sanction (Over 3 Months)	491	1.2%
Ready - Participating	26,270	63.7%
Working	13,333	32.3%
Preparing For Work	5,624	13.6%
Looking For Work	5,262	12.8%
Short Term Sanction (Under 3 Months)	2,051	5.0%

Source: JAS/JFS report JASB09P2-2. Adults include teen parents.

Note: Adult counts differ from other tables because JASB09P2-2 excludes adults that are receiving their last month of benefits. Participation is state, not federal definition.

TANF/WorkFirst Program

Exhibit 28

Average Monthly WorkFirst Adults Not Ready to Participate in WorkFirst/Work Activities SFY 2000

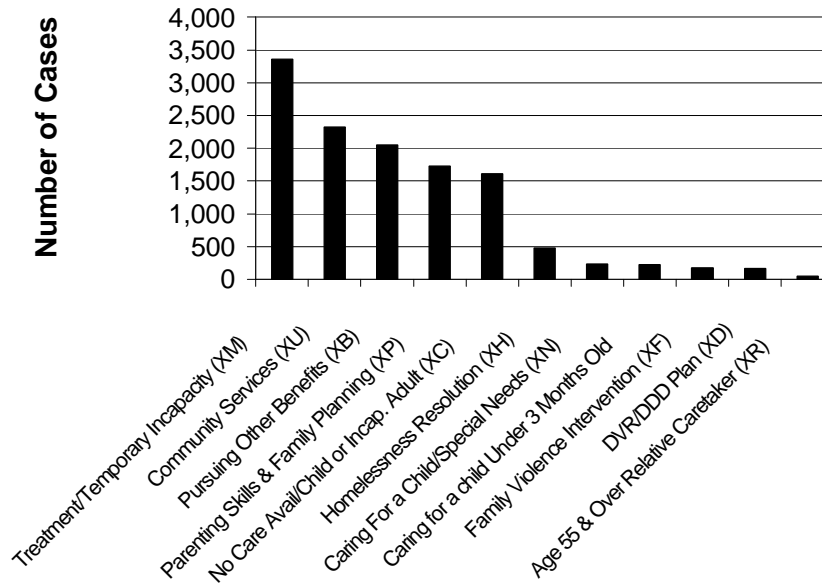


Exhibit 29

Average Monthly WorkFirst Adults Not Ready to Participate SFY 2000

	Adults	Percent of Total WF Adults
Total Number of WorkFirst Adults	41,222	
Adults Not Ready to Participate in WorkFirst/Work Activities	10,661	25.9%
Treatment/Temporary Incapacity (XM)	3,357	8.1%
Community Services (XU)	2,326	5.6%
Pursuing Other Benefits (XB)	2,057	5.0%
Parenting Skills & Family Planning (XP)	1,725	4.2%
No Care Avail/Child or Incap. Adult (XC)	1,613	3.9%
Homelessness Resolution (XH)	482	1.2%
Caring For a Child/Special Needs (XN)	232	0.6%
Caring for a child Under 3 Months Old	224	0.5%
Family Violence Intervention (XF)	177	0.4%
DVR/DDD Plan (XD)	165	0.4%
Age 55 & Over Relative Caretaker (XR)	48	0.1%
Adults Ready to Participate	30,561	74.1%

Source: JAS/JFS report JASB09P2-2. Adults include teen parents.

Note: Adult counts differ from other tables because JASB09P2-2 excludes adults that are receiving their last month of benefits. Participation is state, not federal.

TANF/WorkFirst Program

Exhibit 30

WorkFirst Participation Rates and Targets of Those Adults Ready to Participate
SFY 2000

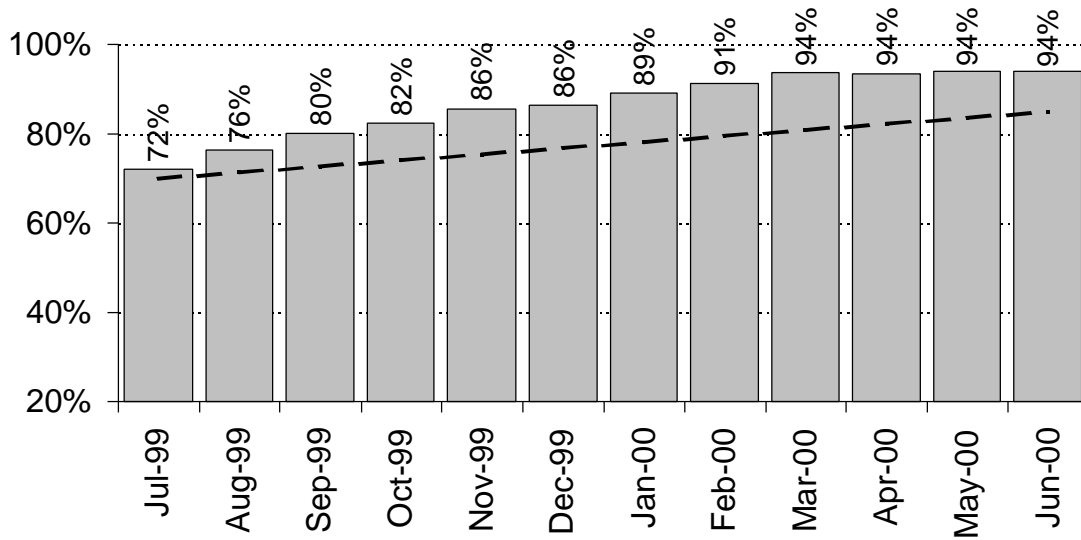


Exhibit 31

WorkFirst Participation Rates and Targets of Those Adults Ready to Participate
SFY 2000

	Participation Rate	Target ¹
Jul-99	72%	70%
Aug-99	76%	71%
Sep-99	80%	73%
Oct-99	82%	74%
Nov-99	86%	75%
Dec-99	86%	77%
Jan-00	89%	78%
Feb-00	91%	80%
Mar-00	94%	81%
Apr-00	94%	82%
May-00	94%	84%
Jun-00	94%	85%

Source: JAS/JFS report JASB09P2-2. Definitions of WorkFirst participation were adjusted effective July 1999 to more clearly define participation as working, looking for work, and preparing for work; to provide better detail about clients temporarily deferred from participation; and to count adults with long-term sanctions as not participating. Participation is state, not federal definition.

¹ ESA performance measures.

TANF/WorkFirst Program

Exhibit 32
TANF Employment Entries
SFY 1999 to SFY 2000

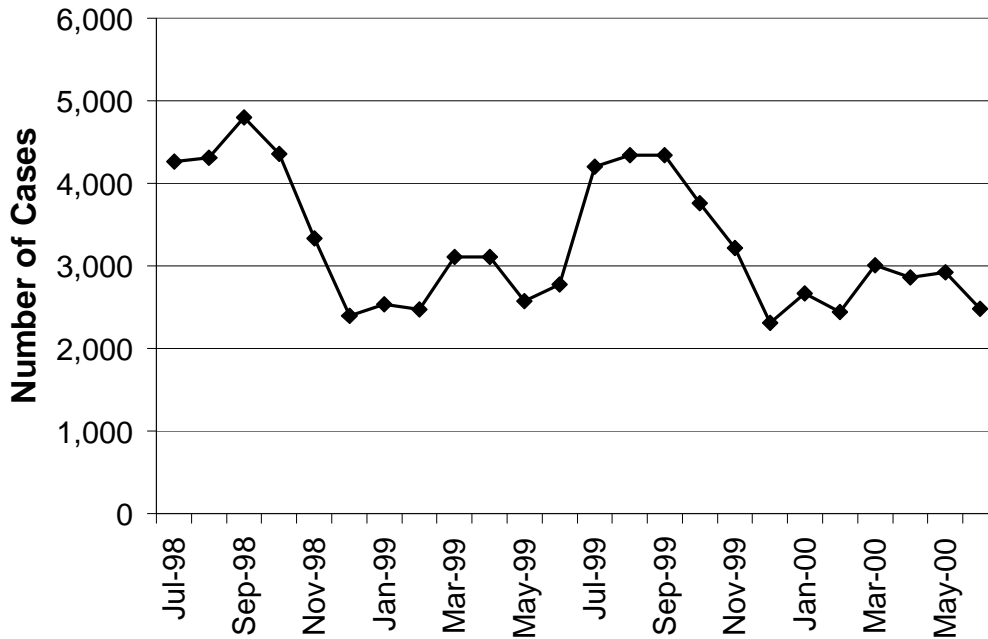


Exhibit 33
TANF Employment Entries
SFY 1999 to SFY 2000

	SFY99			SFY00		
	Entries	Adults	Percent	Entries	Adults	Percent
July	4,262	68,180	6.3%	4,203	51,552	8.2%
August	4,314	66,524	6.5%	4,337	52,019	8.3%
September	4,795	63,357	7.6%	4,345	51,774	8.4%
October	4,359	62,037	7.0%	3,761	51,220	7.3%
November	3,334	60,039	5.6%	3,218	50,845	6.3%
December	2,392	58,387	4.1%	2,310	50,761	4.6%
January	2,536	58,050	4.4%	2,670	50,227	5.3%
February	2,477	56,308	4.4%	2,444	50,913	4.8%
March	3,107	56,100	5.5%	3,010	50,493	6.0%
April	3,110	55,141	5.6%	2,863	49,054	5.8%
May	2,575	53,686	4.8%	2,924	47,481	6.2%
June	2,779	51,942	5.4%	2,482	46,234	5.4%

Source: ESD, Data Mart.

Note: An employment entry occurs when a TANF recipient begins working for a new employer, regardless of hours in the work schedule.

TANF/WorkFirst Program

Exhibit 34a TANF Client (Adults and Children) Demographics July 2000

Characteristic	All TANF Clients (Adults and Children) (N=145,073)	Percent
Gender		
Female	86,183	59.4%
Male	58,888	40.6%
Unknown	2	0.0%
Race		
White	86,219	59.4%
Hispanic	18,724	12.9%
Black	18,772	12.9%
Asian/Pacific Islander	6,636	4.6%
Native American	7,103	4.9%
Unknown	7,619	5.3%
Marital Status (Adults Only)		
Separated	7,106	15.6%
Married	11,598	25.5%
Never Married	19,915	43.8%
Divorced	6,562	14.4%
Widow	329	0.7%
Unknown	3	0.0%
Citizenship		
U.S. Citizen	130,998	90.3%
Resident Alien	13,530	9.3%
U.S. National	152	0.1%
U.S. Born Child of Refugee	375	0.3%
Undocumented Alien	16	0.0%
Unknown	2	0.0%
Age		
< 17 Years Old	96,080	66.2%
17 - 18 Years Old	4,969	3.4%
19 - 20 Years Old	4,085	2.8%
21 - 30 Years Old	18,438	12.7%
31 - 40 Years Old	14,267	9.8%
41 - 50 Years Old	6,031	4.2%
51 - 55 Years Old	779	0.5%
56 + Years Old	424	0.3%
Unknown	0	0.0%
Mean Age of Children	7.8 Years Old	
Median Age of Children	7.5 Years Old	
Mean Age of Adults	31.5 Years Old	
Median Age of Adults	30.2 Years Old	

Source: MRDA caseload tracking the CARD database.

TANF/WorkFirst Program

Exhibit 34b TANF Client (Adults and Children) Demographics July 2000

Characteristic	All TANF Clients (Adults and Children) (N=145,073)	Percent
Client Type		
Adult	45,554	31.4%
Child	99,519	68.6%
Limited in Life Activity ¹	3,721	2.6%
Limited in Work ¹	3,630	2.5%
Limited in English ²	22,013	15.2%
DSHS Region		
Region 1	25,472	17.6%
Region 2	18,632	12.8%
Region 3	14,808	10.2%
Region 4	30,507	21.0%
Region 5	25,526	17.6%
Region 6	30,127	20.8%
Other	1	0.0%
CSO Type		
Urban	104,050	71.7%
Rural	41,023	28.3%

Source: MRDA caseload tracking the CARD database.

¹ Caseworkers ask whether a client is limited in a life activity (e.g., dressing or bathing) or limited in their ability to work. The questions are used to identify disabled clients.

² A client is included in Limited English if the Head of Household for the Assistance Unit has indicated he/she wants to receive materials in a language other than English.

TANF/WorkFirst Program

Exhibit 35

Estimates of TANF Families Reaching 60 Months on Assistance in August 2002 and August 2003

Estimate	Number of families estimated to reach 60-month time limit in August 2002 (percent of projected caseload)	Cumulative Number of families estimated to reach 60-month time limit in August 2003 (percent of projected caseload)
Low estimate	2,900 (5% of projected caseload)	6,460 (11% of projected caseload)
High estimate	4,760 (8% of projected caseload)	10,240 (18% of projected caseload)

Source: low estimate from Washington State Institute for Public Policy; high estimate and maximum numbers from ACES data and OFM projections compiled by MRDA.

Note: The high and low estimates in the table above are projections of how many of these families are likely to remain on the caseload and reach their time limit by certain dates. In addition to these estimates, we know the absolute maximum number of families who could potentially reach the time limit. Families who have received assistance continuously from August 1997 to July 2000, and stay on assistance, could reach their time limit in August 2002. This is a maximum of 6,280 families or 12% of the projected caseload. Families who have received between 24 and 35 months of assistance, as of July 2000, and who stay on assistance, could reach their time limit by August 2003. This is a cumulative total of 15,170 families or 27% of the projected caseload. This is a "worst case scenario."

TANF/WorkFirst Program

Exhibit 36

Families with Long Term TANF Clients
Served by Other DSHS Divisions During SFY 1999

DSHS Divisions serving TANF families	Number of long-term TANF families served by other Divisions	Percentage of long-term families served by other Divisions
Economic Services	6,069	100%
Mental Health Division (MHD)	1,284	21.2%
Division of Alcohol and Substance Abuse (DASA)	631	10.4%
Children's Administration (CA)	1,732	28.5%
Division of Vocational Rehabilitation (DVR)	278	4.6%
MHD and DASA	224	3.7%
MHD and CA	580	9.6%
CA and DASA	328	5.4%
CA and DASA and MHD	142	2.3%

Source: Research and Data Analysis, ad hoc report 10/31/00, cross match of TANF reporting file with Client Service Database.

Note: SFY99 is the latest data available.

TANF/WorkFirst Program

Exhibit 37

Percent of Adults on TANF by Months on Assistance, as of July 2000

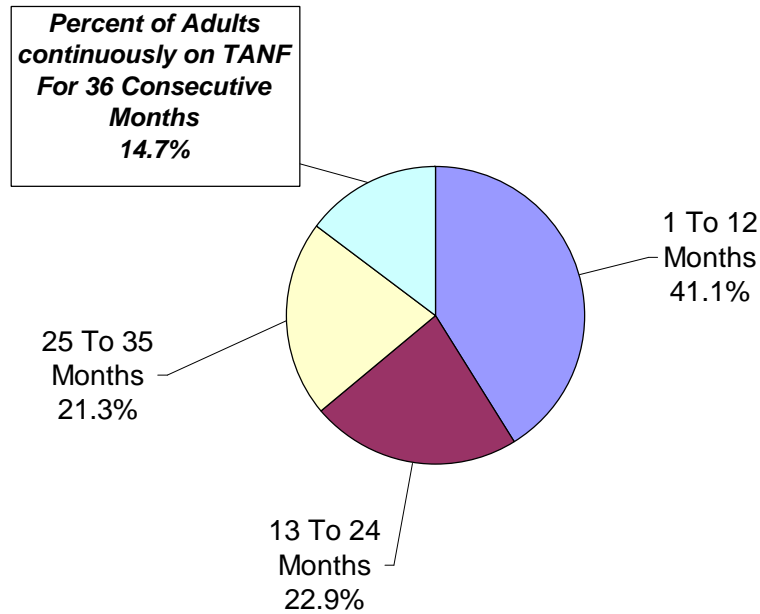


Exhibit 38

Number of Months Adults Have Been Continuously on TANF Since July 1997
as of July 2000

Months	# of Adults ¹	Pct	Months	# of Adults ¹	Pct
1	2,351	5.2%	19	841	1.8%
2	2,355	5.2%	20	813	1.8%
3	1,860	4.1%	21	873	1.9%
4	1,644	3.6%	22	820	1.8%
5	1,628	3.6%	23	811	1.8%
6	1,410	3.1%	24	878	1.9%
7	1,575	3.5%	25	795	1.7%
8	1,106	2.4%	26	720	1.6%
9	1,188	2.6%	27	730	1.6%
10	1,184	2.6%	28	732	1.6%
11	1,211	2.7%	29	744	1.6%
12	1,220	2.7%	30	804	1.8%
13	1,026	2.3%	31	775	1.7%
14	915	2.0%	32	845	1.9%
15	892	2.0%	33	942	2.1%
16	867	1.9%	34	1,047	2.3%
17	882	1.9%	35	1,561	3.4%
18	795	1.7%	36 ¹	6,714	14.7%

Source: MRDA caseload tracking using the CARD database.

Note: These data include months that are not counted by the federal 60-month time clock. Months are not counted if the client is an American Indian living on a reservation where 50 percent of adults are not employed or if the client is under 18 and in an approved living situation.

¹ Number of Adults that have been continuously on TANF since August 1997

TANF/WorkFirst Program

Exhibit 39

Percent of Exemptions for Adults Who Have Been Continuously on TANF For 36 Months as of July 2000

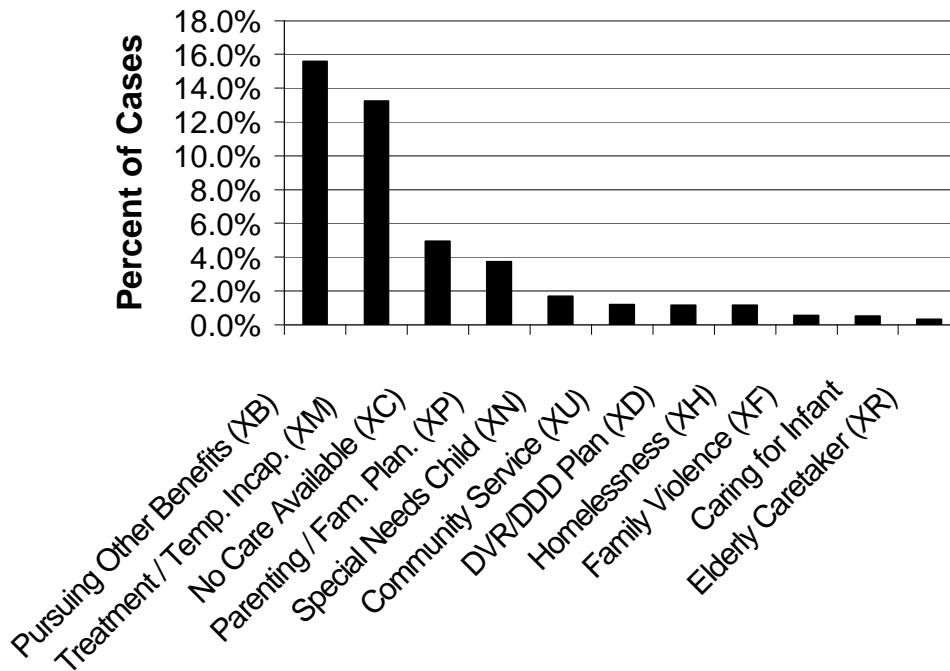


Exhibit 40

All TANF Adults Compared to Adults Who Have Been Continuously on TANF for 36 Months; Exemptions as of July 2000

Exemption	All Adults (N=45,554)		Adults On 36 Months (N=6,714)	
	Count	Percent	Count	Percent
Caring for Infant	657	1.4%	34	0.5%
Pursuing Other Benefits (XB)	3,042	6.7%	1,046	15.6%
No Care Available (XC)	3,077	6.8%	331	4.9%
Treatment / Temp. Incap. (XM)	6,218	13.6%	888	13.2%
Family Violence (XF)	478	1.0%	37	0.6%
DVR/DDD Plan (XD)	312	0.7%	79	1.2%
Homelessness (XH)	1,162	2.6%	78	1.2%
Special Needs Child (XN)	392	0.9%	115	1.7%
Parenting / Fam. Plan. (XP)	4,058	8.9%	252	3.8%
Elderly Caretaker (XR)	65	0.1%	23	0.3%
Community Service (XU)	244	0.5%	80	1.2%

Source: MRDA caseload tracking the CARD database.

Note: Exemptions mean the client is not required to be working, looking for work or preparing for work.

TANF/WorkFirst Program

Exhibit 41a

All TANF Adults Compared to Adults Who Have Been Continuously
on TANF for 36 Months; Demographics as of July 2000

Characteristic	All Adults (N=45,554)	Percent	Adults On 36 Months (N=6,714)	Percent
Gender				
Female	36,709	80.6%	5,830	86.8%
Male	8,845	19.4%	884	13.2%
Unknown	0	0.0%	0	0.0%
Race				
White	30,040	65.9%	4,087	60.9%
Hispanic	3,925	8.6%	422	6.3%
Black	5,374	11.8%	937	14.0%
Asian/Pacific Islander	2,027	4.4%	643	9.6%
Native American	2,272	5.0%	321	4.8%
Unknown	1,916	4.2%	304	4.5%
Marital Status				
Separated	7,061	15.5%	982	14.6%
Married	11,589	25.4%	1,665	24.8%
Never Married	19,862	43.6%	2,719	40.5%
Divorced	6,709	14.7%	1,244	18.5%
Widow	332	0.7%	104	1.5%
Unknown	1	0.0%	0	0.0%
Citizenship				
U.S. Citizen	39,690	87.1%	5,448	81.1%
Resident Alien	5,771	12.7%	1,243	18.5%
U.S. National	77	0.2%	21	0.3%
U.S. Born Child of Refugee	5	0.0%	1	0.0%
Undocumented Alien	10	0.0%	1	0.0%
Unknown	1	0.0%	0	0.0%
Age				
< 17 Years Old	79	0.2%	0	0.0%
17 - 18 Years Old	1,524	3.3%	2	0.0%
19 - 20 Years Old	4,014	8.8%	51	0.8%
21 – 30 Years Old	18,436	40.5%	2,051	30.6%
31 – 40 Years Old	14,267	31.3%	2,605	38.8%
41 – 50 Years Old	6,031	13.3%	1,562	23.2%
51 – 55 Years Old	779	1.7%	281	4.2%
56 + Years Old	424	0.9%	162	2.4%
Unknown	0	0.0%	0	0.0%
Mean	31.5 Years Old		36.5 Years Old	
Median	30.2 Years Old		36.0 Years Old	

Source: MRDA caseload tracking the CARD database.

TANF/WorkFirst Program

Exhibit 41b

All TANF Adults Compared to Adults Who Have Been Continuously
on TANF for 36 Months; Demographics as of July 2000

Characteristic	All Adults (N=45,554)	Percent	Adults On 36 Months (N=6,714)	Percent
Limited in Life Activity ¹	3,035	6.7%	676	10.1%
Limited in Work ¹	3,002	6.6%	690	10.3%
Limited in English ²	5,214	11.4%	1,284	19.1%
DSHS Region				
Region 1	8,522	18.7%	1,138	16.9%
Region 2	4,958	10.9%	669	10.0%
Region 3	4,745	10.4%	539	8.0%
Region 4	9,367	20.6%	1,708	25.4%
Region 5	8,187	18.0%	1,397	20.8%
Region 6	9,775	21.5%	1,263	18.8%
Other	0	0.0%	0	0.0%
CSO Type				
Urban	32,973	72.4%	5,064	75.4%
Rural	12,581	27.6%	1,650	24.6%

Source: MRDA caseload tracking the CARD database.

¹ Caseworkers ask whether a client is limited in a life activity (e.g., dressing or bathing) or limited in their ability to work. The questions are used to identify disabled clients.

² A client is included in Limited English if the Head of Household for the Assistance Unit has indicated he/she wants to receive materials in a language other than English.