

Working Connections Child Care

<u>Exhibits</u>	Page
1. Working Connections Child Care (WCCC) Cases (Chart) SFY 1998 to SFY 2000	86
2. Working Connections Child Care (WCCC) Cases (Table) SFY 1998 to SFY 2000	86
3. Working Connections Child Care, by type (Chart) SFY 1998 to SFY 2000	87
4. Working Connections Child Care, by type (Table) SFY 1998 to SFY 2000	87
5. Percent of TANF Cases Receiving Working Connections Child Care (WCCC) SFY 2000	88
6. TANF Cases Receiving Working Connections Child Care (WCCC) SFY 2000	88
7. Children Served by Working Connections Child Care (Chart) SFY 1998 to SFY 2000	89
8. Children Served by Working Connections Child Care (Table) SFY 1998 to SFY 2000	89
9. Children Served by Working Connections Child Care (Chart) by type SFY 1998 to SFY 2000.....	90
10. Children Served by Working Connections Child Care (Table) by type SFY 1998 to SFY 2000.....	90
11. Average Monthly Percent of Children Using Working Connections Child Care by Facility Type SFY 2000	91
12. Number of Children Using Working Connections Child Care by Facility Type SFY 2000.....	91
13. Average Monthly Percent of Children Under 12 Months of Age Using Working Connections Child Care..... by Facility Type SFY 2000	92
14. Number of Children Under 12 Months of Age Using Working Connections Child Care by Facility Type SFY 2000	92

Working Connections Child Care

Working Connections Child Care

The exhibits in this section summarize Working Connections Child Care (WCCC). The program provides child care subsidies for families, whose incomes are at or below 225% of the federal poverty level, in which adults are working, looking for work, or enrolled in an approved training program while working.

Highlights:

- ✍ **The average monthly caseload of children served by WCCC** for SFY 2000 was 33,978, compared to 30,166 for SFY 1999.
- ✍ **The number of non-TANF cases using child care increased by 33.7%** from fiscal year 1999 to fiscal year 2000; while the number of TANF cases served by WCCC declined by 15.5%.
- ✍ **During fiscal year 2000, more families used center-based care than any other type of care.** This was the pattern of all WCCC utilization by type:
 - ✍ 39% of the cases used center-based care;
 - ✍ 24% used licensed family homes;
 - ✍ 13% placed their children in a relative's home;
 - ✍ 13% had a relative care for their children in the child's home; and
 - ✍ 11% used in-home care by a non-relative

Working Connections Child Care

Exhibit 1
Working Connections Child Care (WCCC) Cases
SFY98 to SFY00

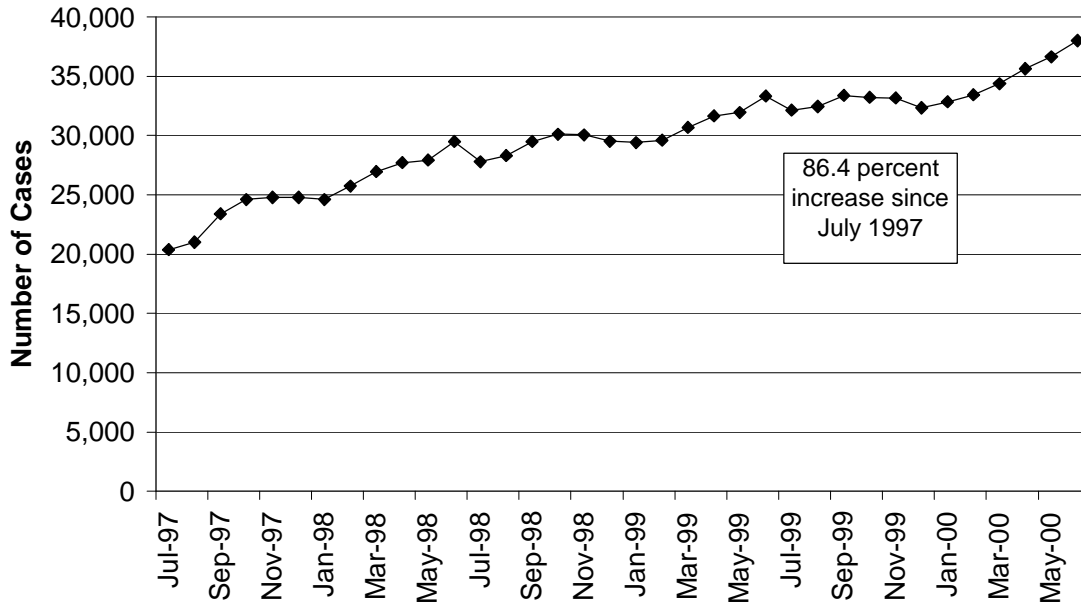


Exhibit 2
Working Connections Child Care (WCCC) Cases
SFY98 to SFY00

	SFY1998	SFY1999	SFY2000
July	20,390	27,803	32,139
August	21,001	28,301	32,460
September	23,397	29,505	33,374
October	24,606	30,122	33,217
November	24,790	30,063	33,180
December	24,786	29,533	32,351
January	24,623	29,407	32,848
February	25,750	29,608	33,444
March	26,974	30,696	34,376
April	27,707	31,660	35,592
May	27,950	31,958	36,559
June	29,484	33,337	37,714
Monthly Avg.	25,122	30,166	33,978

Source: SSPS payment history.

Note: Cases count individual parents. Where more than one payment was made for a month, we retained the earliest payment authorized.

-- Also note, that some cases are authorized to receive WCCC, but do not actually use those services. Counts include only those cases which used WCCC.

Working Connections Child Care

Exhibit 3

Working Connections Child Care (WCCC) Cases, by Type
SFY98 to SFY00

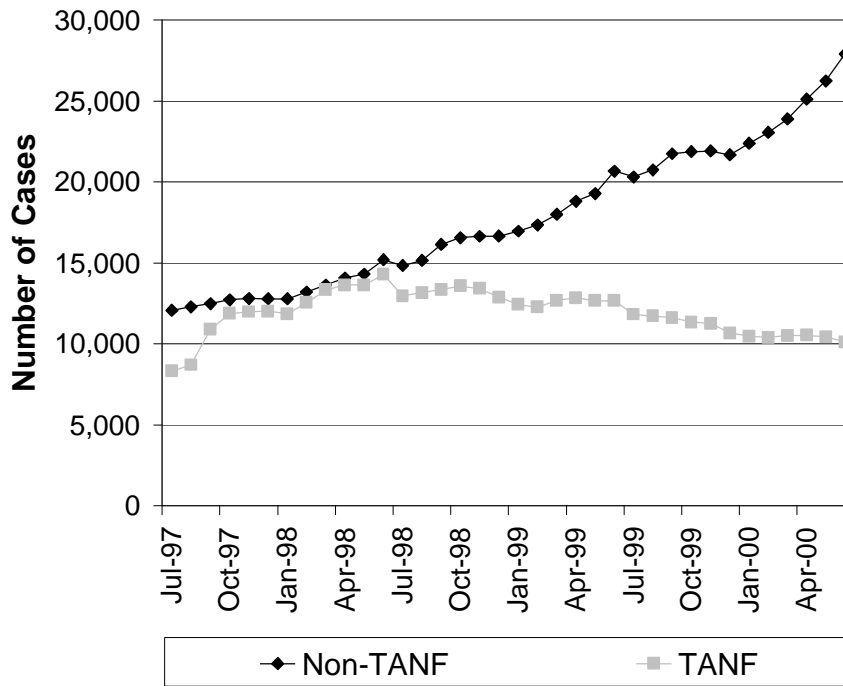


Exhibit 4

Working Connections Child Care (WCCC) Cases, by Type
SFY98 to SFY00

	SFY98			SFY99			SFY00		
	TANF	Non-TANF	Total	TANF	Non-TANF	Total	TANF	Non-TANF	Total
July	8,316	12,074	20,390	12,969	14,834	27,803	11,830	20,309	32,139
August	8,706	12,295	21,001	13,148	15,153	28,301	11,720	20,740	32,460
September	10,899	12,498	23,397	13,354	16,151	29,505	11,625	21,749	33,374
October	11,882	12,724	24,606	13,567	16,555	30,122	11,337	21,880	33,217
November	11,987	12,803	24,790	13,421	16,642	30,063	11,255	21,925	33,180
December	12,009	12,777	24,786	12,876	16,657	29,533	10,673	21,678	32,351
January	11,843	12,780	24,623	12,438	16,969	29,407	10,464	22,384	32,848
February	12,545	13,205	25,750	12,263	17,345	29,608	10,389	23,055	33,444
March	13,332	13,642	26,974	12,689	18,007	30,696	10,493	23,883	34,376
April	13,631	14,076	27,707	12,845	18,815	31,660	10,501	25,091	35,592
May	13,631	14,319	27,950	12,680	19,278	31,958	10,380	26,179	36,559
June	14,288	15,196	29,484	12,677	20,660	33,337	10,004	27,710	37,714
Mo. Avg.	11,922	13,199	25,122	12,911	17,256	30,166	10,903	23,074	33,978

Source: SSPS payment files.

Note: Cases count individual parents. Where more than one payment was made for a month, we retained the earliest payment authorized.

-- Also note, that some cases are authorized to receive WCCC, but do not actually use those services. Counts include only those cases which used WCCC.

Working Connections Child Care

Exhibit 5
 Percent of TANF Cases Receiving
 Working Connections Child Care (WCCC)
 SFY00

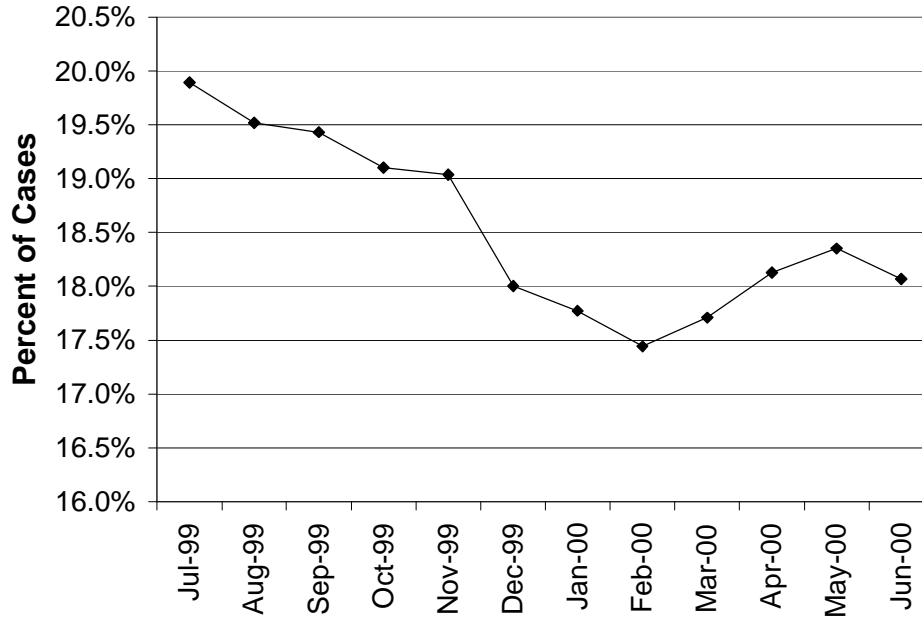


Exhibit 6
 TANF Cases Receiving Working Connections Child Care (WCCC)
 SFY00

	TANF Cases ¹	WCCC Cases Receiving TANF ²	Percent of TANF Cases Receiving Child Care
Jul-99	59,472	11,830	19.9%
Aug-99	60,054	11,720	19.5%
Sep-99	59,827	11,625	19.4%
Oct-99	59,346	11,337	19.1%
Nov-99	59,124	11,255	19.0%
Dec-99	59,290	10,673	18.0%
Jan-00	58,877	10,464	17.8%
Feb-00	59,563	10,389	17.4%
Mar-00	59,254	10,493	17.7%
Apr-00	57,927	10,501	18.1%
May-00	56,562	10,380	18.4%
Jun-00	55,369	10,004	18.1%

¹ Source: CARD Cases and Persons Expenditures Report. Includes child-only and GA-S cases.

² Source: SSPS payment files.

Note: Cases count individual parents. Where more than one payment was made for a month, we retained the earliest payment authorized.

-- Also note, that some cases are authorized to receive WCCC, but do not actually use those services. Counts include only those cases which used WCCC.

Working Connections Child Care

Exhibit 7

Children Served by Working Connections Child Care
SFY98 to SFY00

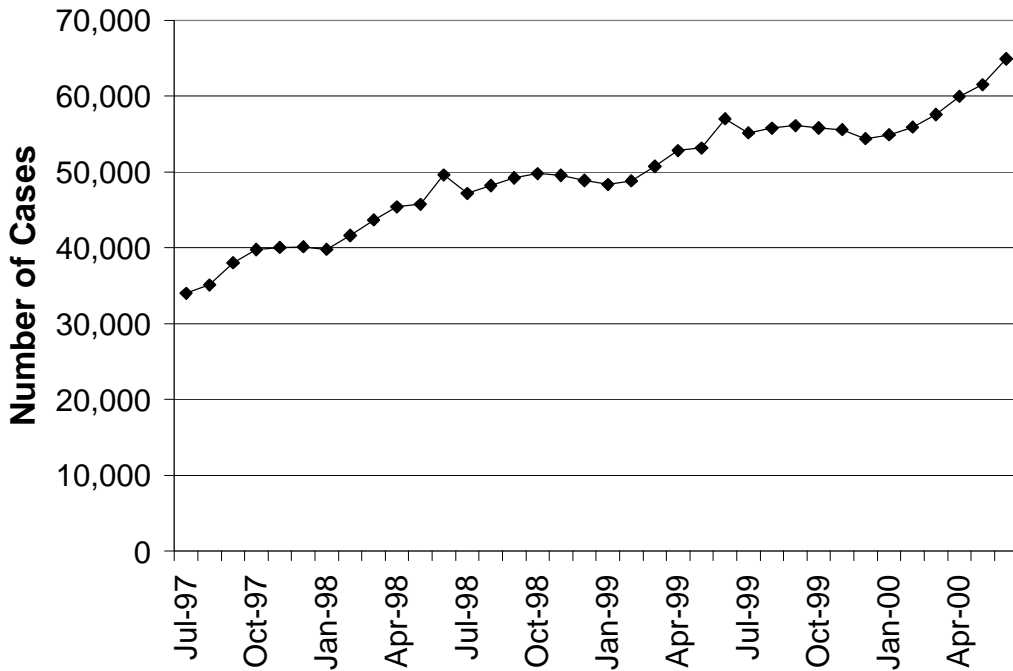


Exhibit 8

Children Served by Working Connections Child Care
SFY98 to SFY00

	SFY1998	SFY1999	SFY2000
July	34,020	47,193	55,166
August	35,096	48,206	55,791
September	38,011	49,212	56,112
October	39,764	49,793	55,805
November	40,028	49,575	55,573
December	40,140	48,888	54,379
January	39,826	48,340	54,904
February	41,625	48,823	55,904
March	43,703	50,746	57,560
April	45,408	52,823	59,945
May	45,723	53,183	61,530
June	49,624	57,002	64,921

Source: SSPS payment records.

Note: Where more than one payment was made for a month, we retained the earliest payment authorized.

-- Also note, that some cases are authorized to receive WCCC, but do not actually use those services. Counts include only those cases which used WCCC.

Working Connections Child Care

Exhibit 9

Children Served by Working Connections Child Care, by Type
SFY98 to SFY00

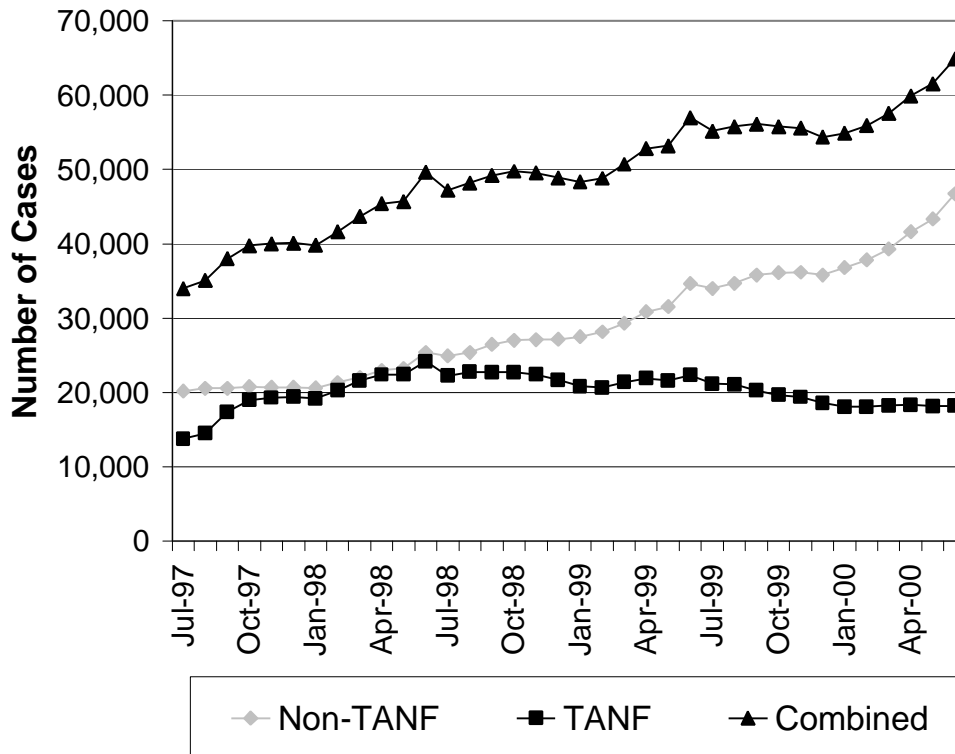


Exhibit 10

Children Served by Working Connections Child Care, by Type
SFY98 to SFY00

	SFY98			SFY99			SFY00		
	TANF	Non-TANF	Total	TANF	Non-TANF	Total	TANF	Non-TANF	Total
July	13,803	20,217	34,020	22,258	24,935	47,193	21,168	33,998	55,166
August	14,526	20,570	35,096	22,806	25,400	48,206	21,117	34,674	55,791
September	17,420	20,591	38,011	22,715	26,497	49,212	20,295	35,817	56,112
October	18,981	20,783	39,764	22,757	27,036	49,793	19,684	36,121	55,805
November	19,327	20,701	40,028	22,457	27,118	49,575	19,398	36,175	55,573
December	19,426	20,714	40,140	21,719	27,169	48,888	18,579	35,800	54,379
January	19,210	20,616	39,826	20,840	27,500	48,340	18,097	36,807	54,904
February	20,281	21,344	41,625	20,636	28,187	48,823	18,064	37,840	55,904
March	21,629	22,074	43,703	21,423	29,323	50,746	18,247	39,313	57,560
April	22,413	22,995	45,408	21,935	30,888	52,823	18,330	41,615	59,945
May	22,453	23,270	45,723	21,619	31,564	53,183	18,163	43,367	61,530
June	24,223	25,401	49,624	22,349	34,653	57,002	18,187	46,734	64,921

Source: SSPS payment records.

Note: Where more than one payment was made for a month, we retained the earliest payment authorized.

-- Also note, that some cases are authorized to receive WCCC, but do not actually use those services. Counts include only those cases which used WCCC.

Working Connections Child Care

Exhibit 11
Average Monthly Percent of Children
Using Working Connections Child Care by Facility Type
SFY00

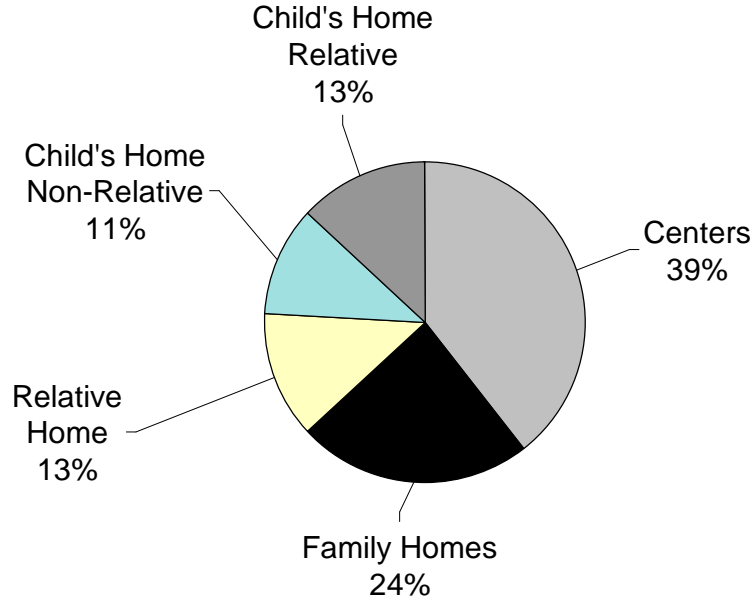


Exhibit 12
Number of Children Using Working Connections Child Care by Facility Type
SFY00

	Center	Licensed Family Home	Relative Home	Child's Home Non-Relative	Child's Home Relative
Jul-99	20,801	12,860	7,841	6,622	7,434
Aug-99	20,984	12,997	7,889	6,886	7,708
Sep-99	21,804	13,426	7,636	6,609	7,476
Oct-99	21,766	13,227	7,383	6,435	7,534
Nov-99	21,875	13,047	7,136	6,428	7,599
Dec-99	21,599	12,694	6,849	6,179	7,474
Jan-00	22,097	12,946	6,757	6,097	7,352
Feb-00	22,801	13,298	6,728	6,056	7,332
Mar-00	23,544	13,933	6,807	6,118	7,431
Apr-00	24,301	14,681	7,172	6,291	7,715
May-00	24,834	15,244	7,282	6,504	7,882
Jun-00	26,256	16,096	7,887	6,795	8,152
Mo. Avg.	22,722	13,704	7,281	6,418	7,591
Mo. Pct.	39%	24%	13%	11%	13%

Source: SSPS payment records.

Note: Where more than one payment was made for a month, we retained the earliest payment authorized.

Working Connections Child Care

Exhibit 13

Average Monthly Percent of Children Under 12 Months of Age
Using Working Connections Child Care by Facility Type
SFY00

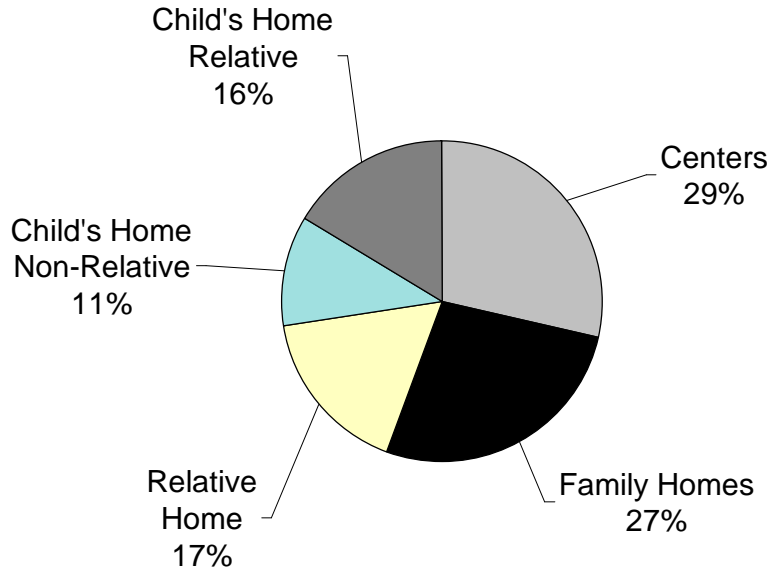


Exhibit 14

Number of Children Under 12 Months of Age
Using Working Connections Child Care by Facility Type
SFY00

	Center	Licensed Family Home	Relative Home	Child's Home Non-Relative	Child's Home Relative
Jul-99	907	905	635	411	537
Aug-99	988	943	654	441	604
Sep-99	1,171	1,110	733	467	646
Oct-99	1,192	1,126	740	482	679
Nov-99	1,218	1,086	727	482	718
Dec-99	1,149	1,005	685	454	720
Jan-00	1,216	1,067	696	468	687
Feb-00	1,242	1,111	697	466	678
Mar-00	1,284	1,175	725	453	716
Apr-00	1,249	1,230	732	452	742
May-00	1,294	1,304	755	484	727
Jun-00	1,299	1,390	760	471	706
Mo. Avg.	1,184	1,121	712	461	680
Mo. Pct.	28.5%	27.0%	17.1%	11.1%	16.4%

Source: SSPS payment records.

Note: Where more than one payment was made for a month, we retained the earliest payment authorized.