

General Assistance Program

General Assistance provides cash assistance to adults who cannot work and do not have dependent children. This section describes the General Assistance program separated into two main categories:

1. **General Assistance-Excluding GA-X (GA).** This category of General Assistance includes: Unemployable (GA-U), Aged (GA-A), Blind (GA-B), Disabled (GA-D), and Residing in an Institution for the Mentally Diseased (GI-A and GI-K).
2. **General Assistance-Expedited Medical Disability Only (GA-X).** The GA-X program supports clients pending applications for SSI, the federal Supplemental Security Income.

Highlights:

- **The average monthly General Assistance caseload (including GA-X) increased 12% in SFY 2002** (19,921 cases), from SFY 2001 (17,850 cases).
- **The average payment per case in SFY 2002 was \$308.10**, compared to \$304.99 in SFY 2001.
- **In SFY 2002, about 7% of the caseload moved from GA to GA-X each month.**
- **Most GA recipients are male (55.3%), and white (67.4%).** A large number are divorced (29%) or never married (41%).
- **The median age for GA recipients is 44.3 years.**
- **Most GA-X recipients are male (55.4%), and white (74.9%).** A large proportion are divorced (35.6%) or never married (45.7%).
- **The median age for GA-X recipients is 43.8 years.**

General Assistance Program

Selected Combined General Assistance Program Characteristics SFY 2001 and SFY 2002

Source: Cases, Persons, and Expenditures Report From the ACES Data Warehouse

	SFY01 (July 00 – June 01)	SFY02 (July 01 – June 02)
Average Number of Cases Per Month (Range)	17,850 16,654 – 19,271)	19,921 (19,265 – 20,758)
Average Number of Persons Per Month (Range)	17,979 (16,779 – 19,435)	20,100 (19,448 – 20,937)
Average Number of Adults Per Month (Range)	17,978 (16,779 – 19,434)	20,100 (19,448 – 20,937)
Recipients as a Percent of State’s Total Population	0.3%	0.3%
State Population¹	5,974,900	6,041,700
Average Persons Per Case	1.0	1.0
Average Monthly Payment Per Case (Range)²	\$304.99 (\$302.46 – \$306.58)	\$308.10 (\$305.48 - \$310.79)

¹ OFM, 2002 Population Trends for Washington State

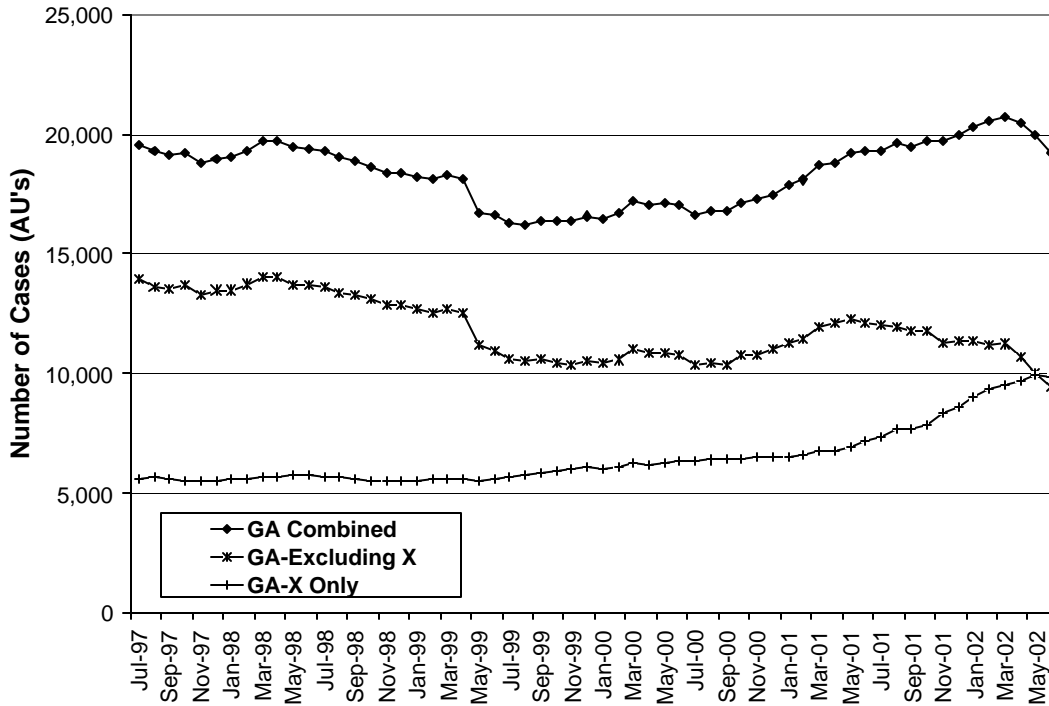
² Payments are not adjusted for refunds

Note: The Combined GA caseload for May 1999 and later have been adjusted to exclude cases formerly in the General Assistance For Pregnant Women Program (GS). These cases have been paid TANF funds since May 1999. The Combined GA caseload for July 2000 and later have been adjusted to exclude cases formerly in the General Assistance For Legal Guardian Program (GH). These cases have been paid TANF funds since July 2000. Since July 2000, the combined GA caseload includes general assistance for Unemployable (GA-U), Aged (GA-A), Blind (GA-B), Disabled (GA-D), Expedited Medical (GA-X), and Residing in an Institution for the Mentally Diseased (GI-A and GI-K).

General Assistance Program

Combined General Assistance Caseload, SFY 2002

Source: Cases, Persons, and Expenditures Report From the ACES Data Warehouse



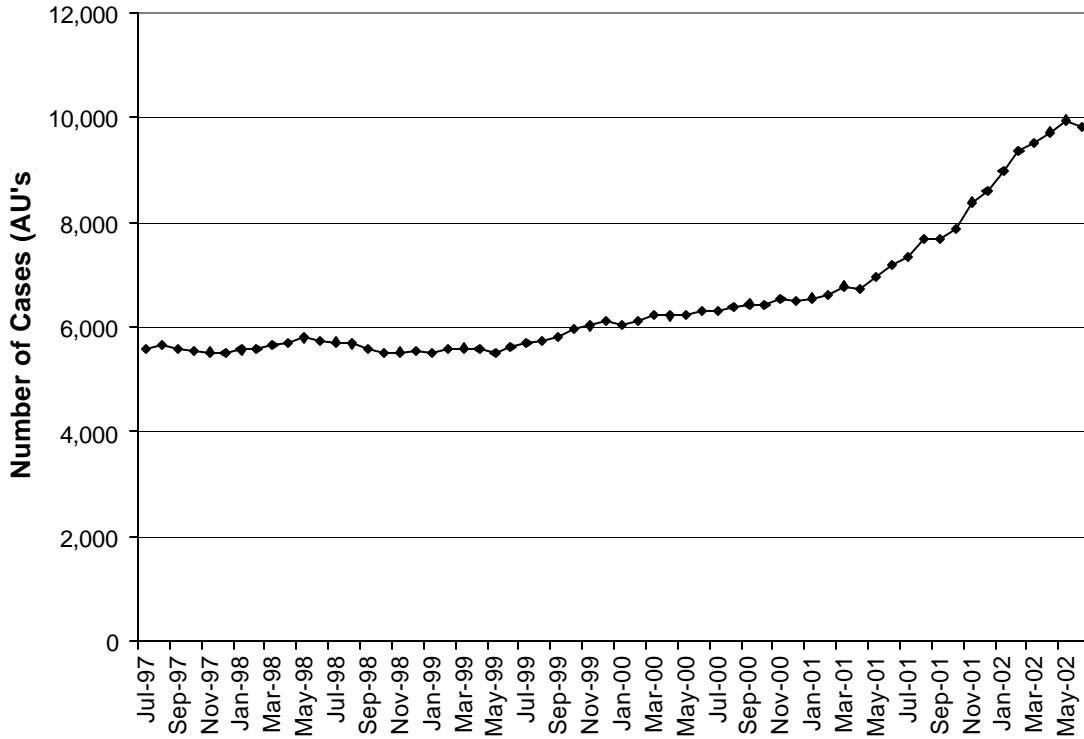
	Cases	Persons	Gross Expenditures	Recoveries	Payment Per Case
July	19,348	19,517	\$5,916,514.03	\$1,540,953.98	\$305.79
August	19,625	19,804	\$6,006,577.78	\$2,026,194.67	\$306.07
September	19,450	19,640	\$5,988,280.75	\$1,488,667.32	\$307.88
October	19,694	19,874	\$6,019,512.62	\$2,182,220.01	\$305.65
November	19,693	19,875	\$6,075,794.27	\$1,279,446.49	\$308.53
December	19,967	20,140	\$6,154,474.49	\$1,889,574.57	\$308.23
January	20,310	20,489	\$6,204,286.61	\$1,613,483.67	\$305.48
February	20,525	20,704	\$6,337,327.90	\$1,954,487.85	\$308.76
March	20,758	20,937	\$6,403,087.42	\$1,716,818.51	\$308.46
April	20,446	20,620	\$6,354,209.43	\$2,058,462.45	\$310.78
May	19,974	20,153	\$6,207,646.01	\$2,656,004.29	\$310.79
June	19,265	19,448	\$5,986,274.59	\$2,396,378.74	\$310.73
Mo. Avg	19,921	20,100	\$6,137,832.16	\$1,900,224.38	\$308.10

Note: The Combined GA caseload for May 1999 and later have been adjusted to exclude cases formerly in the General Assistance For Pregnant Women Program (GS). These cases have been paid TANF funds since May 1999. The Combined GA caseload for July 2000 and later have been adjusted to exclude cases formerly in the General Assistance For Legal Guardian Program (GH). These cases have been paid TANF funds since July 2000. Since July 2000, the combined GA caseload includes general assistance for Unemployable (GA-U), Aged (GA-A), Blind (GA-B), Disabled (GA-D), Expedited Medical (GA-X), and Residing in an Institution for the Mentally Diseased (GI-A and GI-K).

General Assistance Program

GA-X Only Caseload, SFY 2002

Source: Cases, Persons, and Expenditures Report From the ACES Data Warehouse



	Cases	Persons	Gross Expenditures	Recoveries	Payment Per Case
July	7,323	7,332	\$2,344,104.33	\$1,521,354.28	\$320.10
August	7,693	7,703	\$2,464,485.43	\$2,007,974.59	\$320.35
September	7,688	7,700	\$2,458,693.79	\$1,471,277.62	\$319.81
October	7,877	7,891	\$2,521,347.50	\$2,170,933.26	\$320.09
November	8,384	8,396	\$2,691,868.75	\$1,263,614.49	\$321.07
December	8,601	8,610	\$2,762,383.54	\$1,876,907.38	\$321.17
January	8,986	8,999	\$2,879,945.73	\$1,603,007.82	\$320.49
February	9,351	9,366	\$3,009,869.71	\$1,946,110.22	\$321.88
March	9,520	9,534	\$3,062,534.62	\$1,705,241.25	\$321.69
April	9,719	9,732	\$3,126,714.27	\$2,045,793.43	\$321.71
May	9,952	9,962	\$3,203,412.78	\$2,647,181.28	\$321.89
June	9,830	9,839	\$3,161,212.46	\$2,376,300.85	\$321.59
Mo. Avg.	8,744	8,755	\$2,807,214.41	\$1,886,308.04	\$321.06

Note: GA-X is restricted to general assistance for Expedited Medical Only (GA-X)

General Assistance Program

GA-Excluding X Adults Exiting to GA-X Only or Some Other Program SFY 2002

Source: ESA-MRDA

	Total GA-Excluding X Adults	During Subsequent Month Being Reported					
		Adults Remaining On GA-Excluding X	Percent of Adults Remaining On GA-Excluding X	Adults Moving From GA-Excluding X to GA-X Only	Percent of Adults Moving From GA-Excluding X to GA-X	Adults Moving From GA to Other Programs or Exiting	Percent of Adults Moving From GA to Other Programs
July	12,183	10,273	84.3%	850	7.0%	1,060	8.7%
August	12,098	10,302	85.2%	721	6.0%	1,075	8.9%
September	11,937	10,090	84.5%	754	6.3%	1,093	9.2%
October	11,980	9,825	82.0%	1,094	9.1%	1,061	8.9%
November	11,477	9,768	85.1%	778	6.8%	931	8.1%
December	11,533	9,599	83.2%	972	8.4%	962	8.3%
January	11,489	9,630	83.8%	952	8.3%	907	7.9%
February	11,334	9,638	85.0%	804	7.1%	892	7.9%
March	11,403	9,432	82.7%	873	7.7%	1,098	9.6%
April	10,882	8,816	81.0%	978	9.0%	1,088	10.0%
May	10,188	8,292	81.4%	741	7.3%	1,155	11.3%
June	9,605	7,884	82.1%	593	6.2%	1,128	11.7%
Mo. Avg.	11,342	9,462	83.4%	843	7.4%	1,038	9.1%

Note: Left of the vertical line are clients who received GA-excluding X during the month being reported. Anything to the right of the vertical line, the client received during the subsequent month.

GA-Excluding X and GA-X Only Clients on Assistance 12 or More Consecutive Months, SFY 2002

Source: ESA-MRDA

	All GA Clients on 12 or More Consecutive Months	GA-Excluding X Clients on 12 or More Consecutive Months	Percent of GA-Excluding X Clients on 12 or More Consecutive Months	GA-X Clients on 12 or More Consecutive Months	Percent of GA-X Clients on 12 or More Consecutive Months
July	4,051	1,825	45.1%	2,226	54.9%
August	4,102	1,829	44.6%	2,273	55.4%
September	4,093	1,848	45.2%	2,245	54.8%
October	4,075	1,831	44.9%	2,244	55.1%
November	3,975	1,741	43.8%	2,234	56.2%
December	4,040	1,779	44.0%	2,261	56.0%
January	3,997	1,725	43.2%	2,272	56.8%
February	4,015	1,735	43.2%	2,280	56.8%
March	3,956	1,683	42.5%	2,273	57.5%
April	4,023	1,677	41.7%	2,346	58.3%
May	4,113	1,671	40.6%	2,442	59.4%
June	4,069	1,609	39.5%	2,460	60.5%

General Assistance Program

Combined GA Caseload By DSHS Region and CSO, June 2002

Source: ESA-MRDA

	Number of Cases	Percent of Cases
Region 1		
Clarkston	66	0.3%
Colfax	48	0.2%
Colville HCS	14	0.1%
Davenport	23	0.1%
Mattawa	6	0.0%
Moses Lake	281	1.5%
Moses Lake HCS	8	0.0%
Newport	94	0.5%
Okanogan	268	1.4%
Okanogan HCS	3	0.0%
Othello	31	0.2%
Pomeroy	1	0.0%
Republic	46	0.2%
Spokane Central	53	0.3%
Spokane HCS	48	0.2%
Spokane North	564	2.9%
Spokane Southwest	583	3.0%
Spokane Valley	564	2.9%
Tri County - Colville	199	1.0%
Wenatchee - Chelan	357	1.9%
Wenatchee - Douglas	53	0.3%
Wenatchee HCS	4	0.0%
Region 1 Total	3,314	17.2%
Region 2		
Clarkston HCS	2	0.0%
Ellensburg	41	0.2%
Grandview	9	0.0%
Kennewick	337	1.7%
Pasco	207	1.1%
Pasco HCS	10	0.1%
Sunnyside	100	0.5%
Sunnyside HCS	9	0.0%
Toppenish	1	0.0%
Toppenish-Wapato	116	0.6%
Walla Walla	109	0.6%
Walla Walla HCS	6	0.0%
Yakima	267	1.4%
Yakima-Ellensburg HCS	11	0.1%
Yakima – Kittitas	185	1.0%
Region 2 Total	1,410	7.3%

General Assistance Program

Combined GA Caseload By DSHS Region and CSO, June 2002

Source: ESA-MRDA

	Number of Cases	Percent of Cases
Region 3		
Alderwood	507	2.6%
Alderwood HCS	11	0.1%
Bellingham	639	3.3%
Bellingham HCS	23	0.1%
Everett	792	4.1%
Everett HCS	20	0.1%
Friday Harbor	22	0.1%
Mt. Vernon	310	1.6%
Mt. Vernon HCS	4	0.0%
Oak Harbor	121	0.6%
Skykomish HCS	3	0.0%
Skykomish Valley	247	1.3%
Smokey Point	412	2.1%
Smokey Point HCS	10	0.1%
Region 3 Total	3,121	16.2%
Region 4		
Auburn	1	0.0%
Belltown	1,363	7.1%
Burien	513	2.7%
Capitol Hill	627	3.3%
Federal Way	321	1.7%
Holgate	173	0.9%
King Eastside	433	2.2%
King North/Ballard	913	4.7%
King South	625	3.2%
Rainier	394	2.0%
Renton	408	2.1%
West Seattle	309	1.6%
Region 4 Total	6,080	31.6%
Region 5		
Bremerton	543	2.8%
Bremerton HCS	15	0.1%
NW Special Svcs	1,161	6.0%
NW WorkFirst	6	0.0%
Pierce South	499	2.6%
Puyallup HCS	17	0.1%
Puyallup	373	1.9%
Tacoma HCS	54	0.3%
Region 5 Total	2,668	13.8%

General Assistance Program

Combined GA Caseload By DSHS Region and CSO, June 2002

Source: ESA-MRDA

	Number of Cases	Percent of Cases
Region 6		
Aberdeen	211	1.1%
Aberdeen HCS	6	0.0%
Chehalis	239	1.2%
Chehalis HCS	7	0.0%
Columbia River	589	3.1%
Forks	66	0.3%
Goldendale	38	0.2%
Kelso	322	1.7%
Kelso – Long Beach HCS	2	0.0%
Long Beach	49	0.3%
Olympia	454	2.4%
Pacific County HCS	3	0.0%
Port Angeles	328	1.7%
Port Angeles HCS	2	0.0%
Port Townsend	90	0.5%
Shelton	146	0.8%
South Bend	31	0.2%
Stevenson	41	0.2%
Tumwater HCS	9	0.0%
Vancouver	8	0.0%
Vancouver HCS	8	0.0%
WASHCAP	3	0.0%
White Salmon	20	0.1%
Region 6 Total	2,672	13.9%
State Total	19,265	100.0%

General Assistance Program

Combined General Assistance Caseload By County, June 2002

Source: ESA-MRDA

	Number of Cases	Percent of Cases
Adams	31	0.2%
Asotin	68	0.4%
Benton	337	1.7%
Chelan	361	1.9%
Clallam	396	2.1%
Clark	605	3.1%
Columbia	0	0.0%
Cowlitz	324	1.7%
Douglas	53	0.3%
Ferry	46	0.2%
Franklin	217	1.1%
Garfield	1	0.0%
Grant	295	1.5%
Grays Harbor	217	1.1%
Island	121	0.6%
Jefferson	90	0.5%
King	6,080	31.6%
Kitsap	558	2.9%
Kittitas	41	0.2%
Klickitat	58	0.3%
Lewis	246	1.3%
Lincoln	23	0.1%
Mason	146	0.8%
Okanogan	271	1.4%
Pacific	83	0.4%
Pend Oreille	94	0.5%
Pierce	2,110	11.0%
San Juan	22	0.1%
Skagit	314	1.6%
Skamania	41	0.2%
Snohomish	2,002	10.4%
Spokane	1,812	9.4%
Stevens	213	1.1%
Thurston	466	2.4%
Wahkiakum	0	0.0%
Walla Walla	115	0.6%
Whatcom	662	3.4%
Whitman	48	0.2%
Yakima	698	3.6%
State Total	19,265	100.0%

Note: Cases are assigned to counties based on the location of the Community Service Office (CSO) where they are served. Some service areas overlap county boundaries, so counts here may not reflect counts based on county of residence.

General Assistance Program

Demographics: All GA-Excluding X and GA-X Only Clients, June 2002

Source: ESA-MRDA

Characteristic	GA-Excluding X Clients (N= 9,599)		GA-X Only Clients (N= 9,840)	
		Percent		Percent
Gender				
Female	4,288	44.7%	4,388	44.6%
Male	5,311	55.3%	5,452	55.4%
Unknown				
Race				
White	6,474	67.4%	7,366	74.9%
Hispanic	626	6.5%	428	4.3%
Black	918	9.6%	1,031	10.5%
Asian/Pacific Islander	766	8.0%	209	2.1%
Native American	310	3.2%	371	3.8%
Unknown	505	5.3%	435	4.4%
Marital Status				
Separated	1,191	12.4%	1,124	11.4%
Married	923	9.6%	339	3.4%
Never Married	3,933	41.0%	4,495	45.7%
Divorced	2,783	29.0%	3,499	35.6%
Widow	647	6.7%	267	2.7%
Unknown	122	1.3%	116	1.2%
Citizenship				
U.S. Citizen	8,046	83.8%	9,449	96.0%
Resident Alien	1,533	16.0%	386	3.9%
U.S. National	12	0.1%	5	0.1%
Undocumented Alien	2	0.0%	0	0.0%
Unknown	6	0.1%	0	0.0%
Age				
< 17 Years Old	2	0.0%		
17 – 18 Years Old	56	0.6%	19	0.2%
19 – 20 Years Old	248	2.6%	226	2.3%
21 – 30 Years Old	1,405	14.6%	1,354	13.8%
31 – 40 Years Old	2,052	21.4%	2,316	23.5%
41 – 50 Years Old	1,547	16.1%	1,843	18.7%
51 – 55 Years Old	995	10.4%	1,336	13.6%
56 + Years Old	1,811	18.9%	804	8.2%
Unknown	1,483	15.4%	1,942	19.7%
Mean Age of Clients	44.9 Years Old		42.5 Years Old	
Median Age of Clients	44.3 Years Old		43.8 Years Old	

General Assistance Program

Demographics: All GA-Excluding X and GA-X Only Clients, June 2002

Source: ESA-MRDA

Characteristic	GA-Excluding X Clients (N= 9,599)		GA-X Only Clients (N= 9,840)	
		Percent		Percent
Limited in English¹	6,400	66.7%	345	3.5%
DSHS Region				
Region 1	1,704	17.8%	1,625	16.5%
Region 2	710	7.4%	716	7.3%
Region 3	1,374	14.3%	1,769	18.0%
Region 4	2,939	30.6%	3,230	32.8%
Region 5	1,345	14.0%	1,340	13.6%
Region 6	1,527	15.9%	1,160	11.8%
CSO Type				
Urban	7,183	74.8%	7,515	76.4%
Rural	2,416	25.2%	2,325	23.6%
Average Consecutive Months on Assistance	6.5 Months		10.5 Months	
Average Total Number of Months on Assistance Since August 1997	12.0 Months		22.4 Months	

¹ Limited in English is defined as a client whose primary language is not either English, Sign Language, Braille, or Large Print or an interpreter is required OR the INS status is missing and the client is considered a refugee.

General Assistance Program