

## Working Connections Child Care

### Working Connections Child Care

The exhibits in this section summarize Working Connections Child Care (WCCC). The program provides child care subsidies for families whose incomes are at or below 200% of the federal poverty level, in which adults are working, looking for work, or enrolled in an approved training program while working.

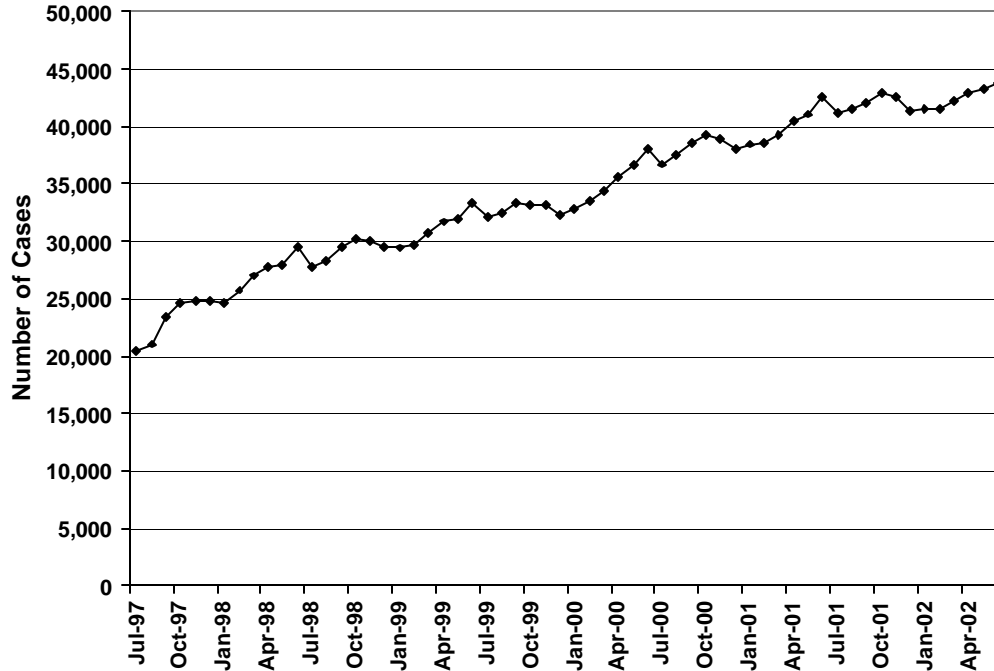
#### Highlights:

- **The average monthly number of cases served by WCCC for SFY 2002 was 42,218, compared to 39,115 for SFY 2001.**
- **The percent of cases served by WCCC that are not receiving TANF increased to 81.5% in June 2002; while the percent receiving TANF declined to 18.5%.**
- **During fiscal year 2002, more children were in center-based care than any other type of care.** This was the pattern of all WCCC utilization by type:
  - 42% of the children were in center-based care;
  - 26% were in licensed family homes;
  - 12% were cared for in a relative's home;
  - 12% were cared for by a relative in their own home; and
  - 9% were cared for at home by a non-relative

## Working Connections Child Care

### Working Connections Child Care (WCCC) Cases SFY 1998 to SFY 2002

Source: SSPS Payment History



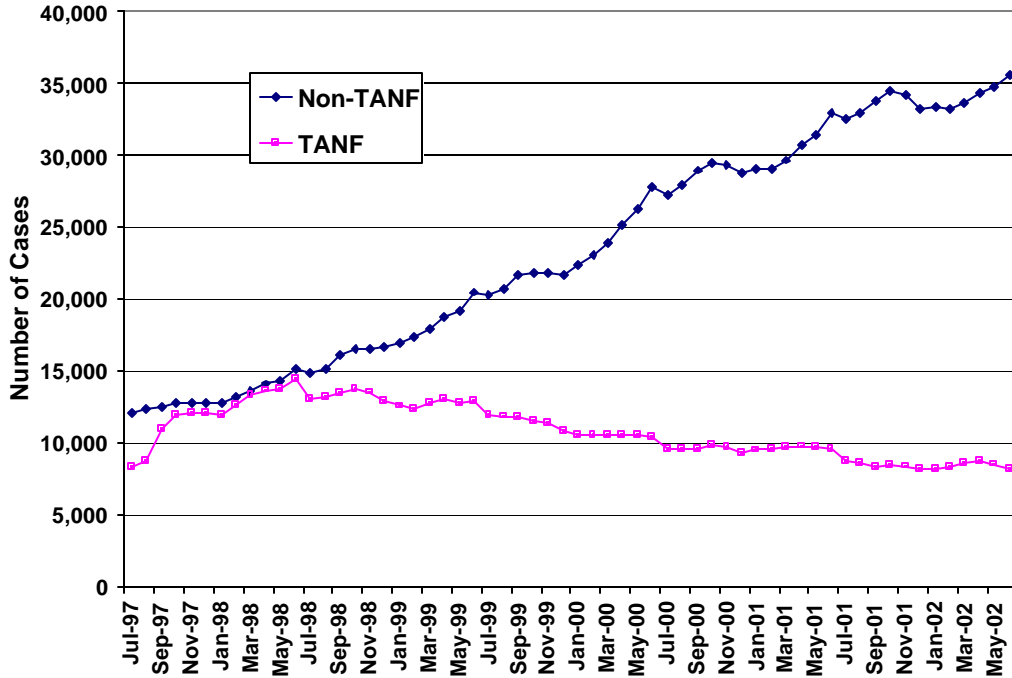
	SFY1998	SFY1999	SFY2000	SFY2001	SFY2002
<b>July</b>	20,440	27,817	32,155	36,736	41,191
<b>August</b>	21,050	28,306	32,472	37,489	41,530
<b>September</b>	23,444	29,515	33,392	38,558	42,053
<b>October</b>	24,647	30,149	33,232	39,231	42,880
<b>November</b>	24,795	30,076	33,188	38,992	42,522
<b>December</b>	24,790	29,539	32,360	38,054	41,346
<b>January</b>	24,628	29,425	32,856	38,479	41,544
<b>February</b>	25,759	29,621	33,455	38,536	41,547
<b>March</b>	26,983	30,712	34,414	39,286	42,160
<b>April</b>	27,719	31,677	35,665	40,412	42,894
<b>May</b>	27,966	31,974	36,705	41,100	43,238
<b>June</b>	29,506	33,360	38,082	42,506	43,716
<b>Monthly Avg.</b>	25,144	30,181	33,998	39,115	42,218

Note: A case is defined by parent's last name, first name, and date of birth. May 2002 and June 2002 data have been lag adjusted.

## Working Connections Child Care

### Working Connections Child Care (WCCC) Cases, by Type SFY 2002

Source: SSPS Payment File



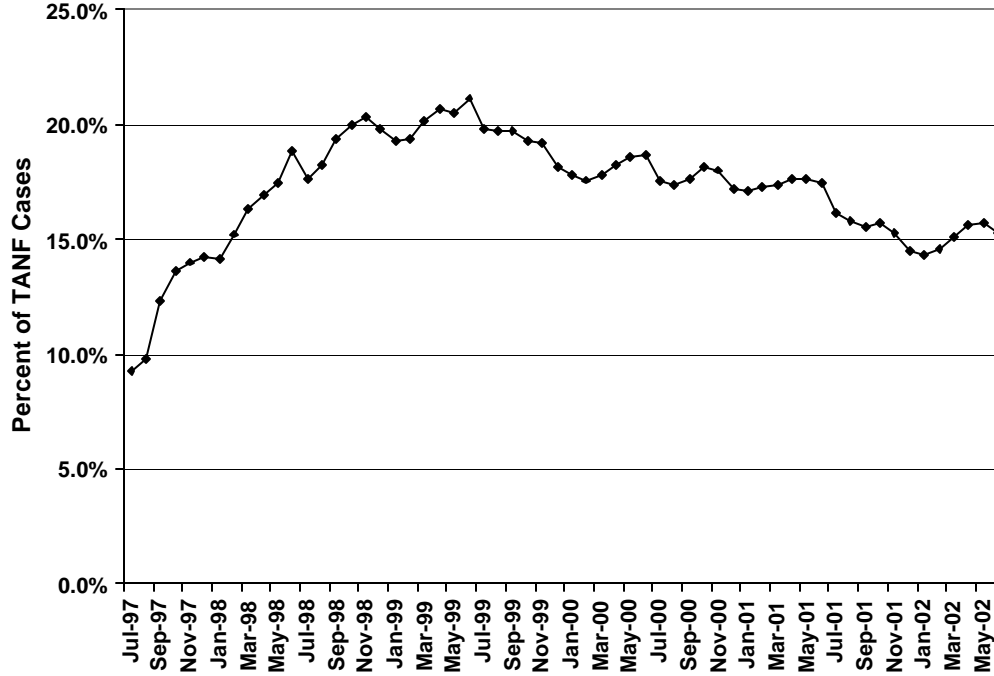
	Total	TANF		Non-TANF	
		Number	Percent	Number	Percent
<b>July</b>	41,191	8,734	21.2%	32,457	78.8%
<b>August</b>	41,530	8,585	20.7%	32,945	79.3%
<b>September</b>	42,053	8,343	19.8%	33,710	80.2%
<b>October</b>	42,880	8,470	19.8%	34,410	80.2%
<b>November</b>	42,522	8,359	19.7%	34,163	80.3%
<b>December</b>	41,346	8,136	19.7%	33,210	80.3%
<b>January</b>	41,544	8,221	19.8%	33,323	80.2%
<b>February</b>	41,547	8,314	20.0%	33,233	80.0%
<b>March</b>	42,160	8,544	20.3%	33,616	79.7%
<b>April</b>	42,894	8,652	20.2%	34,242	79.8%
<b>May</b>	43,238	8,497	19.7%	34,741	80.3%
<b>June</b>	43,716	8,097	18.5%	35,619	81.5%
<b>Avg. Mo.</b>	42,218	8,413	19.9%	33,806	80.1%

**Note:** A case is defined by parent's last name, first name, and date of birth. Where more than one kind of case was found for a month, we retained TANF status for the child with the greatest number of hours of care in that month.. May 2002 and June 2002 data have been corrected for lag.

## Working Connections Child Care

### Percent of TANF Cases Receiving Working Connections Child Care (WCCC), SFY 2002

Source: Cases, Persons, and Expenditures Report and SSPS Payment File



	TANF Cases <sup>1</sup>	WCCC Cases Receiving TANF <sup>2</sup>	Percent of TANF Cases Receiving Child Care
<b>July</b>	54,095	8,734	16.1%
<b>August</b>	54,261	8,585	15.8%
<b>September</b>	53,813	8,343	15.5%
<b>October</b>	54,050	8,470	15.7%
<b>November</b>	54,762	8,359	15.3%
<b>December</b>	56,300	8,136	14.5%
<b>January</b>	57,427	8,221	14.3%
<b>February</b>	56,980	8,314	14.6%
<b>March</b>	56,493	8,544	15.1%
<b>April</b>	55,438	8,652	15.6%
<b>May</b>	54,068	8,497	15.7%
<b>June</b>	53,116	8,097	15.2%

<sup>1</sup> Source: CARD Cases and Persons Expenditures Report. Includes child-only, GA-H, and GA-S cases.

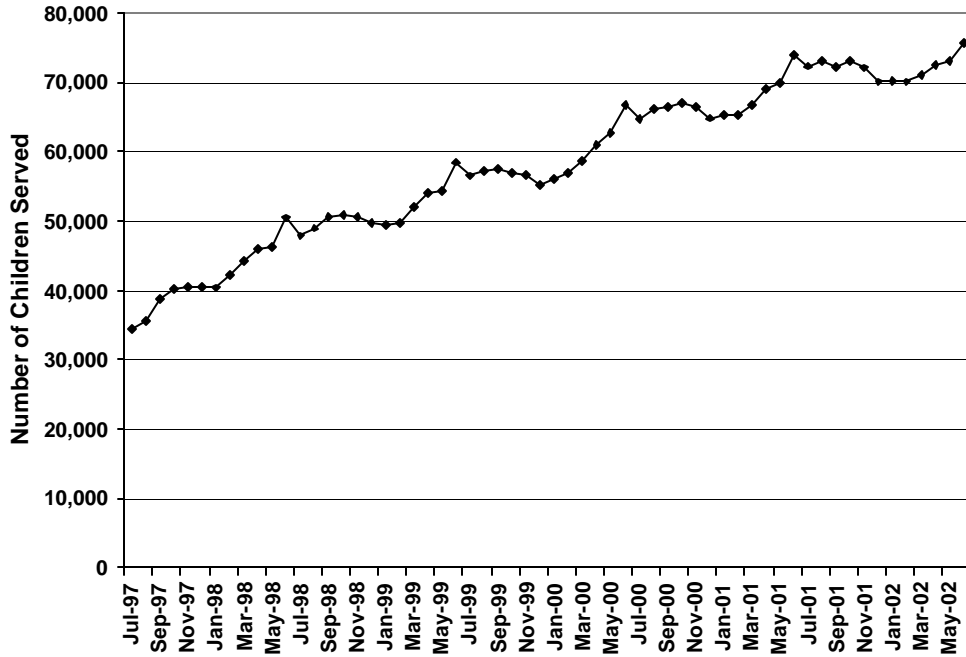
<sup>2</sup> Source: SSPS payment files.

**Note:** A case is defined by parent's last name, first name, and date of birth. Where more than one kind of case was made for a month, we retained TANF status for the child with the greatest number of hours of care in that month.. May 2002 and June 2002 data have been corrected for lag.

## Working Connections Child Care

### Children Served by Working Connections Child Care SFY 1998 to SFY 2002

Source: SSPS Payment File



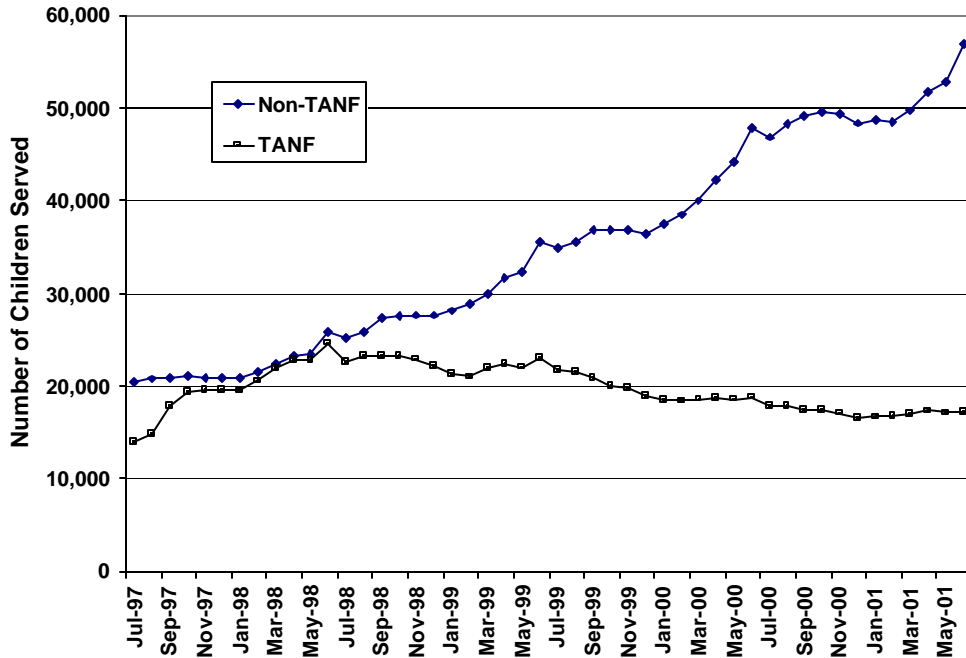
	SFY1998	SFY1999	SFY2000	SFY2001	SFY2002
<b>July</b>	34,402	47,857	56,520	64,635	72,317
<b>August</b>	35,518	48,963	57,104	66,067	73,104
<b>September</b>	38,823	50,476	57,578	66,537	72,143
<b>October</b>	40,304	50,837	56,864	67,077	73,058
<b>November</b>	40,475	50,559	56,549	66,378	72,092
<b>December</b>	40,505	49,728	55,272	64,820	70,062
<b>January</b>	40,359	49,329	55,952	65,303	70,148
<b>February</b>	42,115	49,756	56,856	65,286	70,049
<b>March</b>	44,325	51,919	58,554	66,708	70,993
<b>April</b>	46,042	53,951	61,024	68,963	72,594
<b>May</b>	46,247	54,302	62,731	69,896	73,097
<b>June</b>	50,438	58,473	66,687	74,035	75,677
<b>Avg. Mo.</b>	41,629	51,346	58,474	67,142	72,111

**Note:** A child is defined by child's last name, first name, and date of birth. We retained TANF status associated with the greatest number of hours of care in that month. May 2002 and June 2002 data have been corrected for lag.

## Working Connections Child Care

### Children Served by Working Connections Child Care, by Type SFY 2002

Source: SSPS Payment File



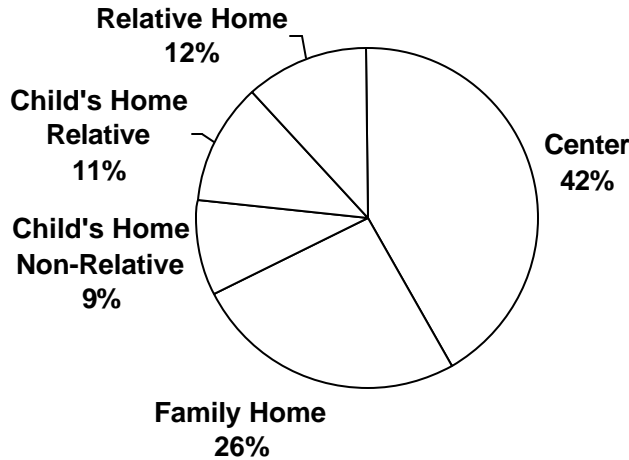
	Total	TANF		Non-TANF	
		Number	Percent	Number	Percent
<b>July</b>	72,317	15,921	22.0%	56,396	78.0%
<b>August</b>	73,104	15,729	21.5%	57,375	78.5%
<b>September</b>	72,143	14,642	20.3%	57,501	79.7%
<b>October</b>	73,058	14,710	20.1%	58,348	79.9%
<b>November</b>	72,092	14,538	20.2%	57,554	79.8%
<b>December</b>	70,062	14,198	20.3%	55,864	79.7%
<b>January</b>	70,148	14,344	20.4%	55,804	79.6%
<b>February</b>	70,049	14,522	20.7%	55,527	79.3%
<b>March</b>	70,993	14,850	20.9%	56,143	79.1%
<b>April</b>	72,594	14,966	20.6%	57,628	79.4%
<b>May</b>	73,097	14,704	20.1%	58,393	79.9%
<b>June</b>	75,677	14,233	18.8%	61,443	81.2%
<b>Avg. Mo.</b>	72,111	14,780	20.5%	57,331	79.5%

**Note:** A child is defined by child's last name, first name, and date of birth.. We retained TANF status associated with the greatest number of hours of care in that month May 2002 and June 2002 data have been corrected for lag.

## Working Connections Child Care

### Average Monthly Percent of Children Using Working Connections Child Care by Facility Type, SFY 2002

Source: SSPS Payment File



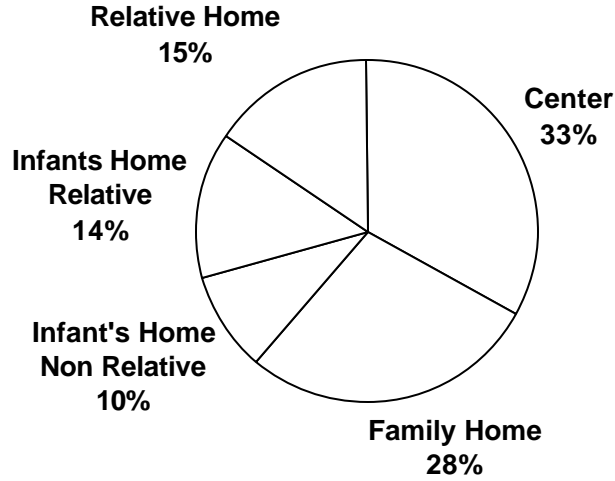
	Center	Licensed Family Home	Relative Home	Child's Home Non-Relative	Child's Home Relative
<b>July</b>	28,862	18,184	9,140	6,842	8,651
<b>August</b>	29,129	18,358	9,362	6,865	8,668
<b>September</b>	28,690	18,584	9,026	6,648	8,376
<b>October</b>	29,606	18,885	8,947	6,644	8,374
<b>November</b>	29,493	18,530	8,765	6,561	8,260
<b>December</b>	28,918	17,619	8,606	6,440	8,059
<b>January</b>	29,447	17,666	8,192	6,426	7,916
<b>February</b>	29,677	17,867	7,905	6,376	7,763
<b>March</b>	30,175	18,234	7,731	6,523	7,837
<b>April</b>	30,815	18,999	7,731	6,601	7,960
<b>May</b>	30,998	19,185	7,702	6,635	8,099
<b>June</b>	31,752	20,141	7,932	6,842	8,437
<b>Mo. Avg.</b>	29,797	18,521	8,420	6,617	8,200
<b>Mo. Pct.</b>	41.6%	25.9%	11.8%	9.2%	11.5%

**Note:** Where a child received care in more than one type of facility in a month, we report the facility type in which they received the greatest amount of care. Some children could not be assigned to a facility type, and 35 children who received care in seasonal camps in June 2002 are not included. May 2002 and June 2002 have been corrected for lag.

## Working Connections Child Care

### Average Monthly Percent of Children Under 12 Months of Age Using Working Connections Child Care by Facility Type, SFY 2002

Source: SSPS Payment File



	Center	Licensed Family Home	Relative Home	Infant's Home Non-Relative	Infant's Home Relative
<b>July</b>	1,573	1,478	873	533	797
<b>August</b>	1,550	1,509	928	516	769
<b>September</b>	1,900	1,634	945	532	755
<b>October</b>	1,928	1,701	983	550	790
<b>November</b>	1,866	1,606	936	539	778
<b>December</b>	1,744	1,428	882	499	731
<b>January</b>	1,774	1,423	834	500	768
<b>February</b>	1,757	1,432	780	502	717
<b>March</b>	1,844	1,465	773	519	740
<b>April</b>	1,944	1,560	737	544	779
<b>May</b>	1,982	1,587	737	533	787
<b>June</b>	1,891	1,602	760	512	747
<b>Mo. Avg.</b>	1,813	1,535	847	523	763
<b>Mo. Pct.</b>	33.1%	28.0%	15.5%	9.5%	13.9%

**Note:** Where a child received care in more than type of facility in a month, we report the facility type in which they received the greatest amount of care. Some children could not be assigned to a facility type. May 2002 and June 2002 have been corrected for lag.