

## Basic Food Program

### Basic Food Program

This section summarizes data on households and persons participating in the Washington State Basic Food Program:

1. **The federally-funded (FSP) and state-funded Basic Food Program (FAP) caseloads are broken out into three program types:**
  - A. SSI - all recipients that also received Supplemental Security Income (SSI) or Social Security (SSA) benefits;
  - B. Public Assistance Food Stamps (PAFS) - all recipients that received a cash assistance grant or SSI;
  - C. Non-Assistance Food Stamps (NAFS) - at least one recipient who did not receive a cash assistance grant or SSI.
2. The **state**-funded Basic Food Program (FAP) is for individuals who meet federal income requirements, but not certain categorical requirements (e.g., their immigrant status).

#### Highlights:

- **The average monthly Basic Food Program caseload increased to 220,120 cases in SFY 2004**, from 192,323 cases in SFY 2003. **The average payment per case in SFY 2004 was \$168.66.**
- **The proportion of the state population who received the Basic Food Program in SFY 2004 increased to 7.3%** compared to 6.6% in SFY 2003.
- **A majority of cases in SFY 2004 received the Basic Food Program through the federally-funded Basic Food Program Only (98.8%).** Another 0.9% are mixed federally-funded and state-funded, and only 0.4% are state-funded only.
- **WASHCAP began in December 2001 to make access to the Basic Food Program easier.** As of June 2004, 36,972 or 16% receive the Basic Food Program through WASHCAP.
- **Preliminary findings indicate Washington's federal Food Stamp Program error rate will be low enough to avoid federal sanctions.** The estimated state-only error rate is 6.3% for FFY 2004 (October 2003 – September 2004), which is approximately 0.4% below the sanction threshold.
- **Most Basic Food Program recipients in SFY 2004 were female (56.2%), white (61.7%) and were never married (23.2%).** The **median age** of adults was **39.0 years.**

## Basic Food Program

### Selected Basic Food Program Characteristics SFY 2003 and SFY 2004

Source: ESA-ACES Data

	SFY03 (July 02 – June 03)	SFY04 (July 03 – June 04)
<b>Average Number of Cases Per Month (Range)</b>	192,323 (174,518 – 206,112)	220,120 (206,853 – 232,065)
<b>Average Number of Persons Per Month (Range)</b>	403,525 (371,672 – 427,314)	451,509 (427,802 – 473,845)
<b>Average Number of Adults Per Month (Range)</b>	222,484 (202,071 – 238,618)	254,371 (239,473 – 268,942)
<b>Average Number of Children Per Month (Range)</b>	181,041 (169,601 – 188,950)	197,138 (188,329 – 204,903)
<b>Recipients as a Percent of State's Total Population</b>	6.6%	7.3%
<b>State Population<sup>1</sup></b>	6,098,300	6,167,800
<b>Children as a Percent of Recipients</b>	44.9%	43.7%
<b>Average Persons Per Case</b>	2.1	2.1
<b>Average Children Per Case</b>	0.9	0.9
<b>Average Children Per Adult</b>	0.8	0.8
<b>Average Monthly Payment Per Case (Range)<sup>2</sup></b>	\$165.60 (\$157.14 - \$169.30)	\$168.66 (\$164.94 - \$171.00)

<sup>1</sup> OFM, 2004 Population Trends for Washington State

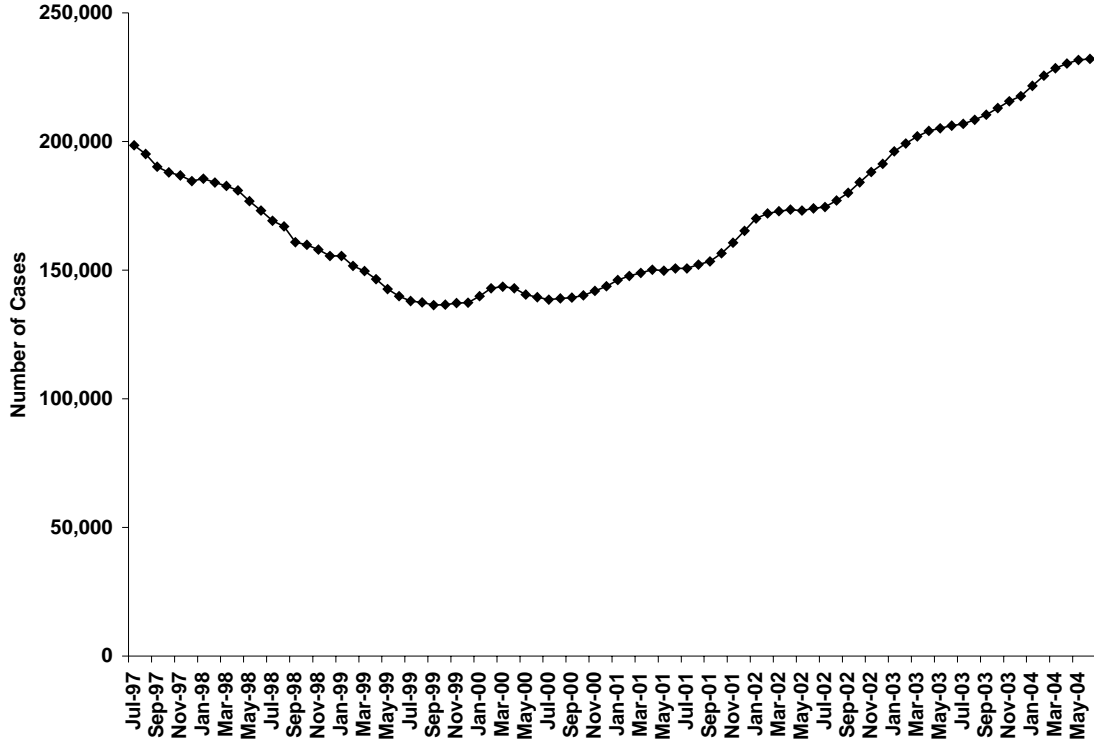
<sup>2</sup> Payments are not adjusted for refunds.

**Note:** Numbers include both the federally-funded Basic Food Program (FSP) and the state-funded Food Assistance for Legal Immigrants Basic Food Program(FAP).

## Basic Food Program

### Basic Food Program Caseload SFY 2004

Source: ESA-ACES Data



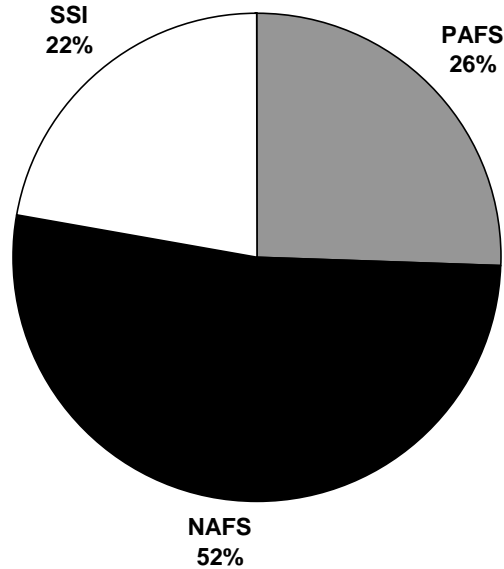
	Cases	Persons	Gross Expenditures	Avg. Payment Per Case
<b>July</b>	206,853	427,802	\$34,375,259.23	\$166.18
<b>August</b>	208,419	429,913	\$34,553,887.93	\$165.79
<b>September</b>	210,353	433,208	\$34,694,739.56	\$164.94
<b>October</b>	212,965	436,627	\$36,129,588.88	\$169.65
<b>November</b>	215,674	442,284	\$36,615,960.99	\$169.77
<b>December</b>	217,629	446,854	\$37,213,788.51	\$171.00
<b>January</b>	221,619	455,534	\$37,367,005.00	\$168.61
<b>February</b>	225,531	461,989	\$38,444,025.35	\$170.46
<b>March</b>	228,430	467,562	\$38,958,227.37	\$170.55
<b>April</b>	230,238	469,801	\$39,165,843.98	\$170.11
<b>May</b>	231,664	472,693	\$39,164,713.92	\$169.06
<b>June</b>	232,065	473,845	\$38,947,810.76	\$167.83
<b>Mo. Avg</b>	220,120	451,509	\$37,135,904.29	\$168.66

**Note:** Numbers include both the federally-funded Basic Food Program (FSP) and the state-funded Food Assistance for Legal Immigrants Basic Food Program(FAP).

## Basic Food Program

### Basic Food Program Caseload By Type, SFY 2004

Source: ESA-ACES Data

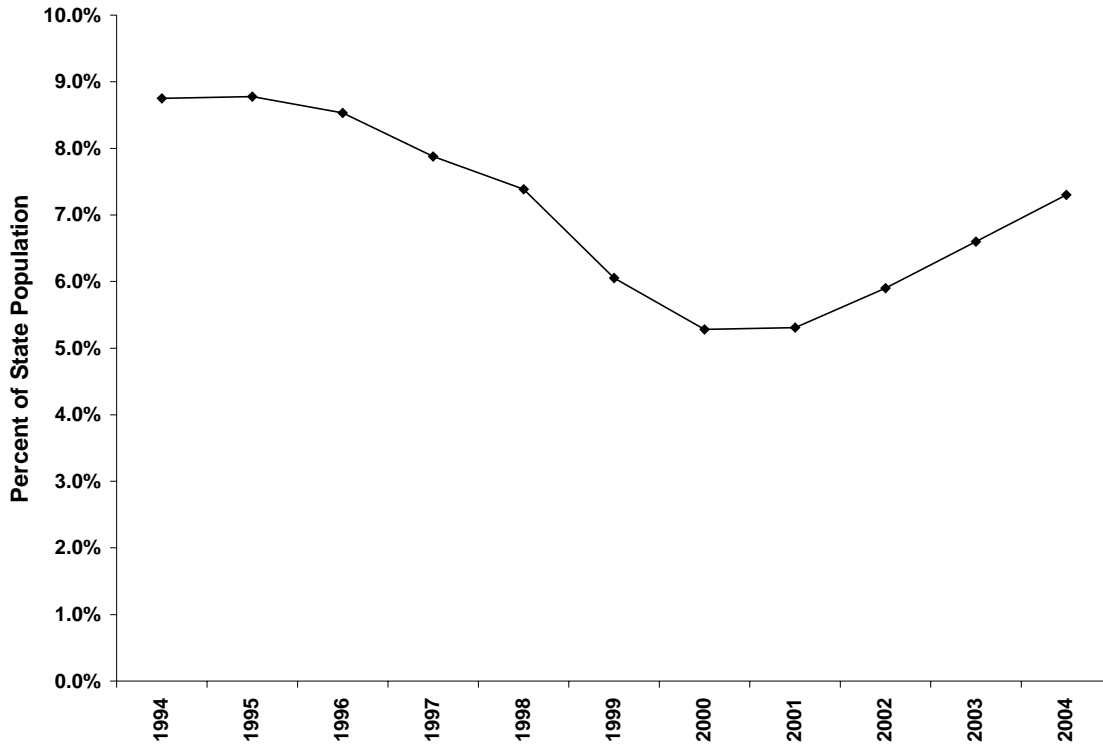


	Caseload	Public Assistance		Non-Public Assistance		SSI	
		Number	Percent	Number	Percent	Number	Percent
<b>July</b>	206,853	54,253	26.2%	106,188	51.3%	46,412	22.4%
<b>August</b>	208,419	54,279	26.0%	106,863	51.3%	47,277	22.7%
<b>September</b>	210,353	54,266	25.8%	108,179	51.4%	47,908	22.8%
<b>October</b>	212,965	54,238	25.5%	110,189	51.7%	48,538	22.8%
<b>November</b>	215,674	54,665	25.3%	112,006	51.9%	49,003	22.7%
<b>December</b>	217,629	55,598	25.5%	112,742	51.8%	49,289	22.6%
<b>January</b>	221,619	56,778	25.6%	115,403	52.1%	49,438	22.3%
<b>February</b>	225,531	58,076	25.8%	117,870	52.3%	49,585	22.0%
<b>March</b>	228,430	58,195	25.5%	120,226	52.6%	50,009	21.9%
<b>April</b>	230,238	58,710	25.5%	121,216	52.6%	50,312	21.9%
<b>May</b>	231,664	58,405	25.2%	122,896	53.0%	50,363	21.7%
<b>June</b>	232,065	57,927	25.0%	123,656	53.3%	50,482	21.8%
<b>Average</b>	220,120	56,283	25.6%	114,786	52.1%	49,051	22.3%

**Note:** NAFS stands for Non-Assistance Food Stamps, PAFS stands for Public Assistance Food Stamps, SSI stands for Supplemental Security Income. Numbers include both the federally-funded Basic Food Program (FSP) and the state-funded Food Assistance for Legal Immigrants Basic Food Program (FAP).

## Basic Food Program

### Average Monthly Basic Food Program Caseload As a Percent of State Population, SFY 1994 to SFY 2004



State Fiscal Year	Average Monthly Participating Persons	Statewide Population <sup>1</sup>	Percent of State Population
1994	466,674	5,334,400	8.7%
1995	476,478	5,429,900	8.8%
1996	470,617	5,516,800	8.5%
1997	441,666	5,606,800	7.9%
1998	419,944	5,685,300	7.4%
1999	348,536	5,757,400	6.1%
2000	311,266	5,894,121	5.3%
2001	317,231	5,974,900	5.3%
2002	354,423	6,041,700	5.9%
2003	403,525	6,098,300	6.6%
2004	451,509	6,167,800	7.3%

**Source:** SFY1988 – SFY1997, Blue Books. SFY1998 Forward: Cases, Persons, and Expenditures Report from the ACES Data Warehouse

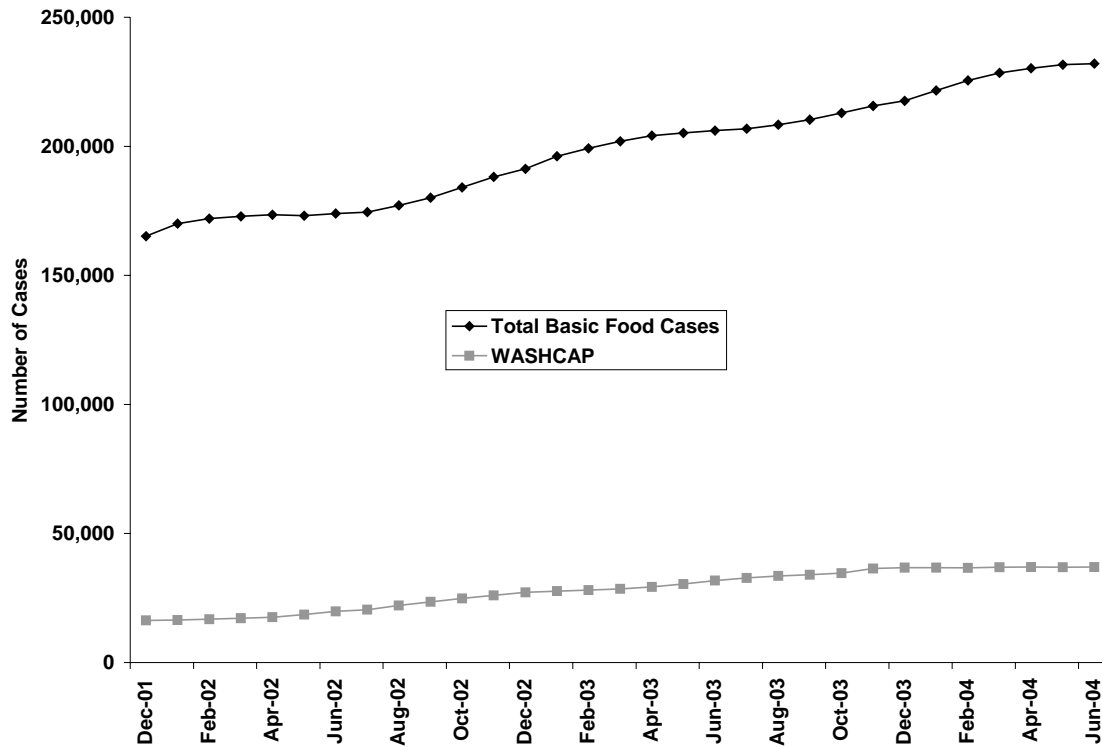
<sup>1</sup> Source: OFM 2003 Population Trends.

**Note:** Numbers include both the federally-funded Basic Food Program (FSP) and the state-funded Food Assistance for Legal Immigrants Basic Food Program (FAP).

## Basic Food Program

### Basic Food Program Caseload Receiving Assistance Through WASHCAP December 2001 Through SFY 2004

Source: ESA-ACES Data



Month	Total Basic Food Program Caseload	Cases Receiving WASHCAP	Percent Receiving WASHCAP	WASHCAP Expenditures	WASHCAP Expenditures Per Case
July	206,853	32,764	15.8%	\$2,996,051.00	\$91.44
August	208,419	33,534	16.1%	\$3,052,931.00	\$91.04
September	210,353	34,030	16.2%	\$3,088,065.00	\$90.75
October	212,965	34,603	16.2%	\$3,385,095.00	\$97.83
November	215,674	36,464	16.9%	\$3,565,051.00	\$97.77
December	217,629	36,745	16.9%	\$3,587,420.00	\$97.63
January '03	221,619	36,750	16.6%	\$3,417,967.00	\$93.01
February	225,531	36,670	16.3%	\$3,215,406.00	\$87.68
March	228,430	36,879	16.1%	\$3,239,791.00	\$87.85
April	230,238	36,957	16.1%	\$3,229,064.00	\$87.37
May	231,664	36,940	15.9%	\$3,223,606.00	\$87.27
June	232,065	36,972	15.9%	\$3,222,440.00	\$87.16
<b>Mo. Average</b>	<b>220,120</b>	<b>35,776</b>	<b>16.3%</b>	<b>\$3,268,573.92</b>	<b>\$91.40</b>

**Note:** Numbers include both the federally-funded Basic Food Program (FSP) and the state-funded Food Assistance for Legal Immigrants Basic Food Program(FAP). The WASHCAP program began in November 2001 with 8 cases. For reporting purposes, the chart shows data beginning in December 2001.

## Basic Food Program

### Basic Food Program Caseload Receiving FSP and FAP, SFY 2004

Source: ESA-ACES Data

	Caseload	FSP ONLY		BOTH FSP & FAP		FAP ONLY	
		Number	Percent	Number	Percent	Number	Percent
July	206,853	204,412	98.8%	1,728	0.8%	713	0.3%
August	208,419	205,915	98.8%	1,770	0.8%	734	0.4%
September	210,353	207,836	98.8%	1,770	0.8%	747	0.4%
October	212,965	210,408	98.8%	1,811	0.9%	746	0.4%
November	215,674	213,020	98.8%	1,904	0.9%	750	0.3%
December	217,629	214,864	98.7%	1,997	0.9%	768	0.4%
January	221,619	218,751	98.7%	2,088	0.9%	780	0.4%
February	225,531	222,613	98.7%	2,125	0.9%	793	0.4%
March	228,430	225,453	98.7%	2,155	0.9%	822	0.4%
April	230,238	227,272	98.7%	2,144	0.9%	822	0.4%
May	231,664	228,749	98.7%	2,112	0.9%	803	0.3%
June	232,065	229,130	98.7%	2,119	0.9%	816	0.4%
<b>Mo. Avg</b>	<b>220,120</b>	<b>217,369</b>	<b>98.8%</b>	<b>1,977</b>	<b>0.9%</b>	<b>775</b>	<b>0.4%</b>

	FAP Caseload	State Expenditures on FAP Cases	Avg. State Expenditures Per Case
July	2,441	\$245,039.76	\$100.38
August	2,504	\$257,231.98	\$102.73
September	2,517	\$260,890.62	\$103.65
October	2,557	\$264,386.01	\$103.40
November	2,654	\$275,279.30	\$103.72
December	2,765	\$287,558.42	\$104.00
January	2,868	\$297,386.61	\$103.69
February	2,918	\$307,709.45	\$105.45
March	2,977	\$316,969.80	\$106.47
April	2,966	\$310,074.18	\$104.54
May	2,915	\$303,894.17	\$104.25
June	2,935	\$299,651.48	\$102.10
<b>Mo. Avg</b>	<b>2,751</b>	<b>\$285,505.98</b>	<b>\$103.70</b>

**Note:** FSP is the Federal Food Stamp Program, FAP is Washington State's Basic Food Program For Legal Immigrants. Some households have a member receiving federal food assistance and a member receiving food assistance through the state; these cases are considered mixed FSP and FAP cases and are rolled into the combined FAP caseload number. In April 2003, the majority of FAP recipients were switched from state to federally funded benefits under a provision of the Farm Bill.

## Basic Food Program

### Basic Food Program Caseload By Region and CSO, June 2004

Source: ESA-ACES Data

	Number of Cases	Percent of Statewide Caseload	Number of Clients	Percent of Statewide Clients
<b>Region 1</b>				
Clarkston	1,243	0.5%	2,989	0.6%
Colfax Branch Office	838	0.4%	1,996	0.4%
Davenport	261	0.1%	634	0.1%
Mattawa	405	0.2%	1,026	0.2%
Moses Lake	3,383	1.5%	8,593	1.8%
Newport	653	0.3%	1,581	0.3%
Okanogan	2,029	0.9%	4,464	0.9%
Othello	747	0.3%	1,900	0.4%
Republic	628	0.3%	1,631	0.3%
Spokane North	7,318	3.2%	17,613	3.7%
Spokane Southwest	5,112	2.2%	9,631	2.0%
Spokane Valley	5,850	2.5%	13,821	2.9%
Tri County – Colville	1,712	0.7%	4,293	0.9%
Wenatchee	3,637	1.6%	8,005	1.7%
Region 1 Call Center	0	0.0%	0	0.0%
<b>Region 1 Total</b>	<b>33,816</b>	<b>14.6%</b>	<b>78,177</b>	<b>16.5%</b>
<b>Region 2</b>				
Ellensburg	928	0.4%	2,013	0.4%
Kennewick	4,055	1.7%	10,147	2.1%
Pasco	2,700	1.2%	6,931	1.5%
Sunnyside	2,849	1.2%	8,420	1.8%
Walla Walla	2,096	0.9%	4,846	1.0%
Wapato	2,838	1.2%	8,040	1.7%
Yakima	7,362	3.2%	17,567	3.7%
Region 2 Call Center	153	0.1%	435	0.1%
<b>Region 2 Total</b>	<b>22,981</b>	<b>9.9%</b>	<b>58,399</b>	<b>12.3%</b>
<b>Region 3</b>				
Alderwood	3,777	1.6%	8,131	1.7%
Bellingham	6,304	2.7%	13,701	2.9%
Everett	6,118	2.6%	13,808	2.9%
Friday Harbor	111	0.0%	204	0.0%
Mt. Vernon	4,412	1.9%	10,020	2.1%
Oak Harbor	1,107	0.5%	2,538	0.5%
Skykomish Valley	2,051	0.9%	4,363	0.9%
Smokey Point	3,485	1.5%	7,755	1.6%
Region 3 Call Center	0	0.0%	0	0.0%
<b>Region 3 Total</b>	<b>27,365</b>	<b>11.8%</b>	<b>60,520</b>	<b>12.8%</b>



## Basic Food Program

### Basic Food Program Caseload By Region and CSO, June 2004

Source: ESA-ACES Data

	Number of Cases	Percent of Statewide Caseload	Number of Clients	Percent of Statewide Clients
<b>Region 4</b>				
Auburn	909	0.4%	2,732	0.6%
Belltown	4,438	1.9%	5,419	1.1%
Burien	4,388	1.9%	10,018	2.1%
Capitol Hill	3,576	1.5%	5,773	1.2%
Federal Way	3,764	1.6%	9,206	1.9%
King Eastside	3,385	1.5%	7,159	1.5%
King North/Ballard	4,941	2.1%	8,760	1.8%
King South/Kent	5,740	2.5%	13,742	2.9%
Rainier	3,487	1.5%	8,084	1.7%
Renton	3,887	1.7%	9,035	1.9%
West Seattle	2,345	1.0%	5,021	1.1%
Region 4 Call Center	158	0.1%	384	0.1%
<b>Region 4 Total</b>	<b>41,018</b>	<b>17.7%</b>	<b>85,333</b>	<b>18.0%</b>
<b>Region 5</b>				
Bremerton	5,166	2.2%	11,601	2.4%
Pierce West/NW WorkFirst	3,657	1.6%	11,092	2.3%
Pierce South	10,643	4.6%	21,280	4.5%
Puyallup	7,205	3.1%	17,147	3.6%
Region 5 Call Center	79	0.0%	190	0.0%
<b>Region 5 Total</b>	<b>26,750</b>	<b>11.5%</b>	<b>61,310</b>	<b>12.9%</b>
<b>Region 6</b>				
Aberdeen	3,226	1.4%	7,105	1.5%
Chehalis	3,321	1.4%	7,841	1.7%
Columbia River	12,850	5.5%	31,330	6.6%
Forks	565	0.2%	1,271	0.3%
Goldendale	506	0.2%	1,194	0.3%
Kelso	5,149	2.2%	11,711	2.5%
Long Beach	533	0.2%	1,070	0.2%
Neah Bay	0	0.0%	0	0.0%
Olympia	5,333	2.3%	11,895	2.5%
Port Angeles	1,697	0.7%	3,517	0.7%
Port Townsend	822	0.4%	1,554	0.3%
Shelton	1,891	0.8%	4,348	0.9%
South Bend	457	0.2%	1,048	0.2%
Stevenson	414	0.2%	868	0.2%
White Salmon	408	0.2%	1,037	0.2%
Region 6 Call Center	14	0.0%	40	0.0%
<b>Region 6 Total – Without WASHCAP</b>	<b>37,186</b>	<b>16.0%</b>	<b>37,186</b>	<b>16.0%</b>
<b>WASHCAP</b>	<b>31,686</b>	<b>13.7%</b>	<b>31,685</b>	<b>6.7%</b>
<b>Region 6 Total – With WASHCAP</b>	<b>68,872</b>	<b>29.7%</b>	<b>117,514</b>	<b>24.8%</b>

**Note:** The WASHCAP office is part of Region 6 but includes cases from around the state who receive assistance from this office.

## Basic Food Program

### Basic Food Program Caseload By Region and CSO, June 2004

Source: ESA-ACES Data

	Number of Cases	Percent of Statewide Caseload	Number of Clients	Percent of Statewide Clients
<b>HCS Offices</b>				
Aberdeen	291	0.1%	307	0.1%
Alderwood	257	0.1%	302	0.1%
Bellingham	288	0.1%	320	0.1%
Bremerton	318	0.1%	345	0.1%
Chehalis	155	0.1%	163	0.0%
Clarkston	57	0.0%	58	0.0%
Colville	260	0.1%	272	0.1%
Ellensburg	19	0.0%	19	0.0%
Everett	524	0.2%	620	0.1%
Holgate	3,058	1.3%	3,517	0.7%
Kelso	192	0.1%	203	0.0%
Moses Lake	198	0.1%	227	0.0%
Mt. Vernon	164	0.1%	179	0.0%
Oak Harbor	46	0.0%	47	0.0%
Okanogan	130	0.1%	139	0.0%
Pacific	92	0.0%	99	0.0%
Pasco	338	0.1%	385	0.1%
Port Angeles	165	0.1%	170	0.0%
Puyallup	0	0.0%	0	0.0%
Skykomish	114	0.0%	118	0.0%
Smokey Point	157	0.1%	170	0.0%
Spokane	1,348	0.6%	1,510	0.3%
Sunnyside	66	0.0%	72	0.0%
Tacoma	1,386	0.6%	1,548	0.3%
Toppenish-Wapato	44	0.0%	47	0.0%
Tumwater	396	0.2%	416	0.1%
Vancouver	536	0.2%	627	0.1%
Walla Walla	170	0.1%	185	0.0%
Wenatchee	209	0.1%	228	0.0%
Yakima-Ellensburg	285	0.1%	299	0.1%
<b><i>HCS Office Total</i></b>	<b>11,263</b>	<b>4.9%</b>	<b>12,592</b>	<b>2.7%</b>
<b>State Total</b>	<b>232,065</b>	<b>100.0%</b>	<b>473,845</b>	<b>100.0%</b>

Note: A number of Basic Food Program cases receive services through a Home Community Service Center (HCS) administered through the Aging and Adult Services Administration. These cases are listed separately since they are not part of an Economic Services Administration Community Service Division (CSD) Community Service Office (CSO).

## Basic Food Program

### Basic Food Program Caseload By County of Residence, June 2004

Source: ESA-ACES Data

	Number of Cases	Percent of Statewide Caseload	Number of Clients	Percent of Statewide Clients
Adams	857	0.4%	2,105	0.4%
Asotin	1,388	0.6%	3,047	0.6%
Benton	5,127	2.2%	11,935	2.5%
Chelan	3,310	1.4%	6,673	1.4%
Clallam	2,839	1.2%	5,360	1.1%
Clark	14,956	6.4%	33,538	7.1%
Columbia	149	0.1%	290	0.1%
Cowlitz	6,103	2.6%	12,608	2.7%
Douglas	955	0.4%	2,103	0.4%
Ferry	547	0.2%	1,143	0.2%
Franklin	2,957	1.3%	7,152	1.5%
Garfield	65	0.0%	152	0.0%
Grant	4,377	1.9%	10,225	2.2%
Grays Harbor	4,283	1.8%	8,293	1.8%
Island	1,482	0.6%	3,071	0.6%
Jefferson	979	0.4%	1,723	0.4%
King	53,564	23.1%	98,535	20.8%
Kitsap	6,726	2.9%	13,157	2.8%
Kittitas	1,064	0.5%	2,154	0.5%
Klickitat	1,092	0.5%	2,401	0.5%
Lewis	3,917	1.7%	8,465	1.8%
Lincoln	357	0.2%	809	0.2%
Mason	2,285	1.0%	4,732	1.0%
Okanogan	2,527	1.1%	5,182	1.1%
Pacific	1,219	0.5%	2,313	0.5%
Pend Oreille	839	0.4%	1,756	0.4%
Pierce	26,800	11.5%	55,005	11.6%
San Juan	214	0.1%	370	0.1%
Skagit	4,998	2.2%	10,438	2.2%
Skamania	458	0.2%	889	0.2%
Snohomish	18,840	8.1%	37,472	7.9%
Spokane	22,368	9.6%	45,270	9.6%
Stevens	2,074	0.9%	4,649	1.0%
Thurston	6,787	2.9%	13,350	2.8%
Wahkiakum	108	0.0%	221	0.0%
Walla Walla	2,425	1.0%	5,121	1.1%
Whatcom	7,514	3.2%	14,917	3.1%
Whitman	958	0.4%	2,117	0.4%
Yakima	14,557	6.3%	35,104	7.4%
<b>State Total</b>	<b>232,065</b>	<b>100.0%</b>	<b>473,845</b>	<b>100.0%</b>

## Basic Food Program

### Basic Food Program Error Rate FFY 1990 to FFY 2003

Source: ESA - Quality Assurance

Federal FY	State Finding	Official State Error Rate	Tolerance <sup>1</sup>	Difference <sup>2</sup>
1990	9.7	10.1	10.8	0.7
1991	10.8	11.2	10.3	-0.9
1992	10.9	11.7	10.7	-1.0
1993	8.2	9.3	10.8	1.5
1994	8.9	9.7	10.3	0.6
1995	8.3	8.5	9.7	1.2
1996	10.4	11.3	9.2	-2.1
1997	14.0	14.6	9.8	-4.8
1998	14.1	15.6	10.7	-4.9
1999	7.6	8.6	9.9	1.3
2000	7.2	8.2	8.9	0.7
2001	8.1	8.5	8.7	0.2
2002	7.8	8.2	8.3	0.1
2003	6.2	6.3	6.6	0.4

Note: Official data is made available nine months after the end of the previous Federal Fiscal Year. Therefore, 2004 data is not yet available.

<sup>1</sup> The tolerance level is a federally determined threshold which States may be sanctioned for exceeding.

<sup>2</sup> The difference is calculated by subtracting the Official State Error Rate from the federally determined tolerance level. Positive numbers mean that the State's Official Error Rate is below tolerance and is not subject to sanction status. Negative numbers mean that the State's Official Error Rate is above tolerance and the state is subject to sanction status.

#### Information about the Basic Food Program Error Rate:

Each month, a number of Basic Food cases are randomly selected for federal quality control review. The findings on all cases are reported monthly to the Food and Nutrition Service (FNS), part of the US Department of Agriculture, which administers the Food Stamp Program. After 12 months of reviews are reported, the data collected is considered statistically valid. These findings, along with a regression rate (based on federal differences and the number of completions) determined by FNS, comprise the state's official error rate. The error rates of all states are used to determine the national payment error rate.

The state's payment error rate is compared to the national error rate and is used to determine if the state is in sanction status or is eligible for bonus monies as either one of the best in the nation or one of the most improved. A state will be in sanction status if it exceeds the federal requirement for at least 2 consecutive years.

Determining sanctions is a two-step process. First, the lower boundary of the state's error rate at 95% confidence interval is determined and compared to 105% of the national payment error rate. (Example: An error rate of 8.5% may have a tolerance level of +/- .5%. This means that there is a 95% chance that the error rate falls between 8% and 9%. The lower boundary of 8% is compared to 105% of the federal rate. If the federal error rate is 7.75%, the rate used would be 7.75 x 1.05, or 8.1375%. In this example, the state's lower boundary error rate of 8% is less than 105% of the federal error rate, or 8.1375%, so there is no sanction.) If the state's lower boundary is above the adjusted federal rate, then the second step, determining the sanction amount, is computed. To compute this, determine the difference between the state's error rate and 6%. (This figure of 6% is constant.) Multiply that difference by the value of all allotments issued during the federal fiscal year, and multiply this by 10%. That is the amount of the potential sanction for one year.

It is up to the USDA Secretary to determine if all or most of a sanction amount will be waived. If not waived, the Secretary can determine how much of that amount will be used for reinvesting in payment accuracy activities and how much will be "at risk", or eligible to be repaid to FNS if the state is in sanction for a second consecutive year.

## Basic Food Program

### Basic Food Program Client Demographics, June 2004

Source: ESA-ACES Data

Characteristic	All Clients (473,845)		All Adults (268,942)		All Children (204,903)	
		Percent		Percent		Percent
<b>Gender</b>						
Female	266,292	56.2%	165,048	61.4%	101,244	49.4%
Male	207,531	43.8%	103,883	38.6%	103,648	50.6%
Unknown	22	0.0%	11	0.0%	11	0.0%
<b>Race</b>						
White	292,171	61.7%	182,015	67.7%	110,156	53.8%
Hispanic	66,380	14.0%	23,947	8.9%	42,433	20.7%
Black	41,431	8.7%	22,196	8.3%	19,235	9.4%
Asian/Pacific Islander	22,510	4.8%	15,273	5.7%	7,237	3.5%
Native American	16,678	3.5%	9,965	3.7%	6,713	3.3%
Unknown	34,675	7.3%	15,546	5.8%	19,129	9.3%
<b>Marital Status (Adults Only)</b>						
Separated	28,342	6.0%	28,342	10.5%	N/A	N/A
Married	60,144	12.7%	60,144	22.4%	N/A	N/A
Never Married	109,719	23.2%	109,719	40.8%	N/A	N/A
Divorced	54,752	11.6%	54,752	20.4%	N/A	N/A
Widow	13,006	2.7%	13,006	4.8%	N/A	N/A
Unknown	2,979	0.6%	2,979	1.1%	N/A	N/A
<b>Citizenship</b>						
U.S. Citizen	430,466	90.8%	236,550	88.0%	193,916	94.6%
Resident Alien	42,427	9.0%	31,761	11.8%	10,666	5.2%
U.S. National	952	0.2%	631	0.2%	321	0.2%
<b>Age</b>						
< 17 Years Old	197,615	41.7%	0	0.0%	197,615	96.4%
17 Years Old	7,288	1.5%	0	0.0%	7,288	3.6%
18 Years Old	7,089	1.5%	7,089	2.6%	0	0.0%
19 – 20 Years Old	11,840	2.5%	11,840	4.4%	0	0.0%
21 – 29 Years Old	60,546	12.8%	60,546	22.5%	0	0.0%
30 – 39 Years Old	59,640	12.6%	59,640	22.2%	0	0.0%
40 – 49 Years Old	55,915	11.8%	55,915	20.8%	0	0.0%
50 – 55 Years Old	23,464	5.0%	23,464	8.7%	0	0.0%
56 – 59 Years Old	11,131	2.3%	11,131	4.1%	0	0.0%
60 – 64 Years Old	11,124	2.3%	11,124	4.1%	0	0.0%
65+ Years Old	28,193	5.9%	28,193	10.5%	0	0.0%
Mean Age of Children	8.0 Years Old		N/A		8.0 Years Old	
Median Age of Children	8.0 Years Old		N/A		8.0 Years Old	
Mean Age of Adults	41.5 Years Old		41.5 Years Old		N/A	
Median Age of Adults	39.0 Years Old		39.0 Years Old		N/A	

## Basic Food Program

### Basic Food Program WASHCAP Client Demographics, June 2004

Source: ESA-ACES Data

Characteristic	All Clients	
	(36,971)	Percent
<b>Gender</b>		
Female	22,412	60.6%
Male	14,553	39.4%
Unknown	6	0.0%
<b>Race</b>		
White	25,890	70.0%
Hispanic	1,535	4.2%
Black	2,673	7.2%
Asian/Pacific Islander	20,377	55.1%
Native American	1,138	3.1%
Unknown	2,167	5.9%
<b>Marital Status (Adults Only)</b>		
Separated	4,632	12.5%
Married	272	0.7%
Never Married	15,813	42.8%
Divorced	9,790	26.5%
Widow	4,824	13.0%
Unknown	1,640	4.4%
<b>Citizenship</b>		
U.S. Citizen	32,495	87.9%
Resident Alien	4,396	11.9%
U.S. National	80	0.2%
<b>Age</b>		
< 17 Years Old	0	0.0%
17 Years Old	0	0.0%
18 Years Old	67	0.2%
19 – 20 Years Old	407	1.1%
21 – 29 Years Old	3,220	8.7%
30 – 39 Years Old	4,113	11.1%
40 – 49 Years Old	7,297	19.7%
50 – 55 Years Old	5,301	14.3%
56 – 59 Years Old	3,188	8.6%
60 – 64 Years Old	3,450	9.3%
65+ Years Old	9,928	26.9%
<b>Mean Age of Clients</b>	53.9 Years Old	
<b>Median Age of Clients</b>	53.0 Years Old	

**Note:** Numbers include both the federally-funded Basic Food Program (FSP) and the state-funded Food Assistance for Legal Immigrants Basic Food Program(FAP).