

TANF/WorkFirst Program

TANF and WorkFirst

The exhibits in this section summarize the TANF and WorkFirst caseload trends for SFY 2004.

In the following exhibits, we include both federally-funded TANF and state-funded SFA cases, unless otherwise noted.

Highlights:

- **Washington's TANF/WorkFirst average monthly caseload increased to 55,600 in SFY 2004**, from a monthly average of 54,631 in SFY 2003.
- **The average payment per case in SFY 2004 was \$423.18.**
- **Child-only cases increased to 36.3% of the total TANF caseload** in June 2004, compared to 35.4% in June 2003.
- **Single-parent cases remained about the same at 54.0% in June 2004 as a percent of the total TANF caseload**, compared to 54.4% June 2003.
- **Two-parent cases declined to 9.7% of the TANF caseload in June 2004**, compared to 10.1% in June 2003.
- **In June 2004, 15.1% of TANF cases with adults were in sanction status compared to 16.4% in June 2003.**
- **In June 2004, 40% of WorkFirst adults were in full-time participation, compared to 42% in June 2003.**
- **Of adults exiting in March 2004, 17.3% returned within six months**, compared to 18.5% the previous year. The percentage has ranged from a high of 22.3% to a low of 17.3% between April 2003 and March 2004.
- **In June 2004, the majority of TANF adult clients were female (80.3%), white (62.3%), and not married (77.0%). The median age for an adult was 29.0 years.**

TANF/WorkFirst Program

Selected TANF/SFA Program Characteristics SFY 2003 and SFY 2004

Source: ESA-ACES Data

	SFY03 (July 02 – June 03)	SFY04 (July 03 – June 04)
Average Number of Cases Per Month (Range)	54,631 (52,166 – 57,022)	55,600 (53,728 – 57,781)
Average Number of Persons Per Month (Range)	136,417 (130,977 – 141,831)	136,359 (131,405 – 141,609)
Average Number of Adults Per Month (Range)	41,233 (39,398 – 43,322)	40,799 (38,796 – 42,654)
Average Number of Children Per Month (Range)	95,186 (91,536 – 98,512)	95,561 (92,345 – 99,022)
Recipients as a Percent of State's Total Population	2.2%	2.2%
State Population¹	6,098,300	6,167,800
Children as a Percent of Recipients	69.8%	70.1%
Average Persons Per Case	2.5	2.5
Average Children Per Case	1.7	1.7
Average Children Per Adult	2.3	2.3
Average Monthly Payment Per Case (Range)²	\$430.61 (\$423.35 - \$439.24)	\$423.18 (\$418.15 - \$428.24)

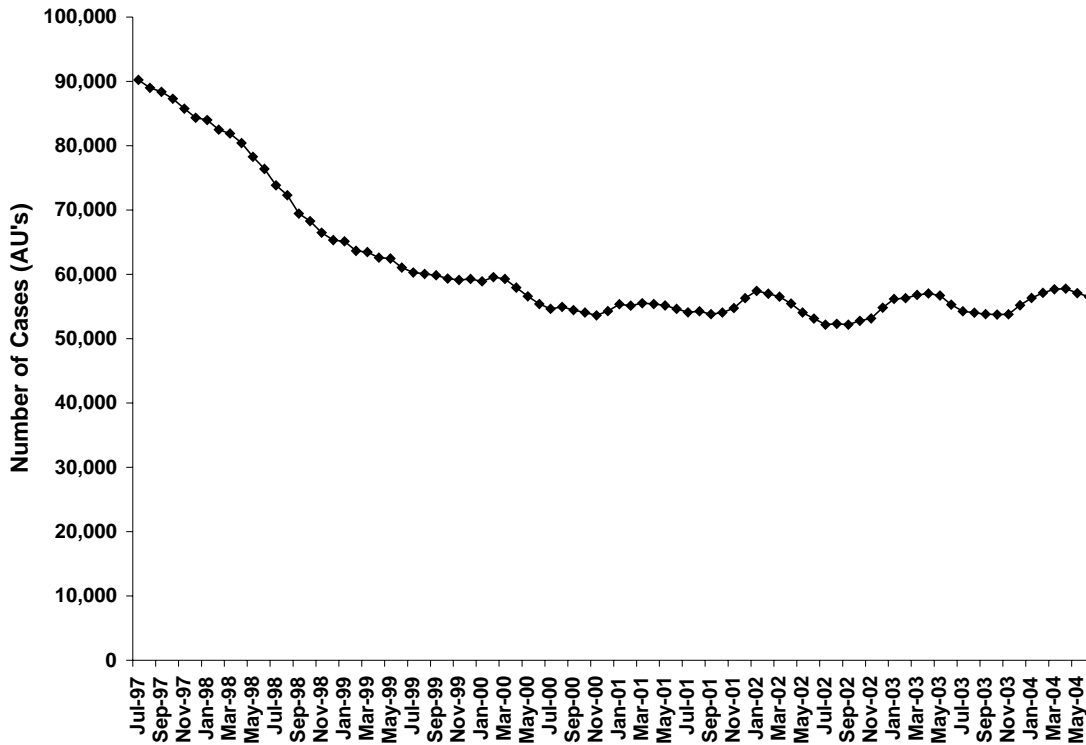
¹ OFM 2003 Population Trends for Washington State

² Payments are not adjusted for refunds.

TANF/WorkFirst Program

TANF/SFA Caseload, SFY 2004

Source: ESA-ACES Data



	Cases	Persons	Grant Expenditures	Recoveries	Avg. Payment Per Case
July	54,239	133,789	\$22,833,020.87	\$133,572.65	\$420.97
August	54,023	133,099	\$22,873,470.31	\$113,978.95	\$423.40
September	53,820	132,477	\$22,734,441.19	\$152,136.38	\$422.42
October	53,728	131,835	\$22,717,171.50	\$133,826.93	\$422.82
November	53,783	131,405	\$22,706,464.89	\$114,448.68	\$422.19
December	55,186	135,025	\$23,298,221.20	\$126,935.29	\$422.18
January	56,313	137,968	\$23,547,490.29	\$113,882.64	\$418.15
February	57,101	139,923	\$24,272,788.48	\$126,174.65	\$425.09
March	57,664	141,512	\$24,574,613.54	\$142,012.35	\$426.17
April	57,781	141,609	\$24,744,033.10	\$106,228.03	\$428.24
May	57,066	139,595	\$24,184,941.51	\$133,739.57	\$423.81
June	56,501	138,071	\$23,885,388.71	\$157,560.58	\$422.74
Mo. Avg.	55,600	136,359	\$23,531,003.80	\$129,541.39	\$423.18

TANF/WorkFirst Program

TANF/SFA Caseload Receiving Federal TANF and SFA, SFY 2004

Source: ESA-ACES Data

	Caseload	Federal ONLY		BOTH Federal & SFA		SFA ONLY	
		Number	Percent	Number	Percent	Number	Percent
July	54,239	53,512	98.7%	470	0.9%	287	0.5%
August	54,023	53,275	98.6%	473	0.9%	297	0.5%
September	53,820	53,060	98.6%	476	0.9%	309	0.6%
October	53,728	52,920	98.5%	495	0.9%	341	0.6%
November	53,783	52,938	98.4%	520	1.0%	360	0.7%
December	55,186	54,280	98.4%	558	1.0%	380	0.7%
January	56,313	55,354	98.3%	603	1.1%	390	0.7%
February	57,101	56,057	98.2%	661	1.2%	417	0.7%
March	57,664	56,634	98.2%	634	1.1%	431	0.7%
April	57,781	56,731	98.2%	638	1.1%	441	0.8%
May	57,066	56,036	98.2%	628	1.1%	432	0.8%
June	56,501	55,477	98.2%	628	1.1%	425	0.8%
Mo. Avg	55,600	54,690	98.4%	565	1.0%	376	0.7%

	SFA Caseload	State Expenditures on SFA Cases	Avg. State Expenditures Per Case
July	757	\$201,106.57	\$265.66
August	770	\$216,499.00	\$281.17
September	785	\$217,655.53	\$277.27
October	836	\$231,610.36	\$277.05
November	880	\$246,747.24	\$280.39
December	938	\$262,334.59	\$279.67
January	993	\$275,581.44	\$277.52
February	1,078	\$305,360.30	\$283.27
March	1,065	\$308,638.08	\$289.80
April	1,079	\$309,827.66	\$287.14
May	1,060	\$302,013.66	\$284.92
June	1,053	\$290,665.18	\$276.04
Mo. Avg	941	\$264,003.30	\$280.51

Note: SFA is Washington State's State Family Assistance for legal immigrants and others ineligible for TANF. Some households have a member receiving federal TANF assistance and a member receiving family assistance through the state; these cases are considered mixed Federal TANF and SFA cases and are rolled into the combined SFA only caseload (SFA Only + Mixed Federal TANF/SFA Caseload) number.

TANF/WorkFirst Program

TANF/SFA Caseload By DSHS Region and CSO, June 2004

Source: ESA-ACES Data

	Number of Cases	Percent of Statewide Caseload	Number of Clients	Percent of Statewide Clients
Region 1				
Clarkston	282	0.5%	704	0.5%
Colfax Branch Office	147	0.3%	360	0.3%
Davenport	60	0.1%	129	0.1%
Mattawa	114	0.2%	284	0.2%
Moses Lake	1,042	1.8%	2,632	1.9%
Newport	200	0.4%	485	0.4%
Okanogan	449	0.8%	999	0.7%
Othello	260	0.5%	609	0.4%
Republic	78	0.1%	204	0.1%
Spokane North	1,992	3.5%	4,777	3.5%
Spokane Southwest	674	1.2%	1,535	1.1%
Spokane Valley	1,392	2.5%	3,304	2.4%
Tri County – Colville	440	0.8%	1,095	0.8%
Wenatchee	779	1.4%	1,746	1.3%
Region 1 Call Center	0	0.0%	0	0.0%
Region 1 Total	7,909	14.0%	18,863	13.7%
Region 2				
Ellensburg	237	0.4%	576	0.4%
Kennewick	1,267	2.2%	3,239	2.3%
Pasco	947	1.7%	2,330	1.7%
Sunnyside	1,088	1.9%	3,013	2.2%
Walla Walla	547	1.0%	1,249	0.9%
Wapato	1,180	2.1%	3,223	2.3%
Yakima	2,605	4.6%	6,375	4.6%
Region 2 Call Center	43	0.1%	117	0.1%
Region 2 Total	7,914	14.0%	20,122	14.6%
Region 3				
Alderwood	883	1.6%	2,094	1.5%
Bellingham	1,302	2.3%	3,072	2.2%
Everett	1,604	2.8%	4,162	3.0%
Friday Harbor	17	0.0%	33	0.0%
Mt. Vernon	1,151	2.0%	2,765	2.0%
Oak Harbor	205	0.4%	453	0.3%
Skykomish Valley	492	0.9%	1,068	0.8%
Smokey Point	1,045	1.8%	2,411	1.7%
Region 3 Call Center	0	0.0%	0	0.0%
Region 3 Total	6,699	11.9%	16,058	11.6%

TANF/WorkFirst Program

TANF/SFA Caseload By DSHS Region and CSO, June 2004

Source: ESA-ACES Data

	Number of Cases	Percent of Statewide Caseload	Number of Clients	Percent of Statewide Clients
Region 4				
Auburn	1,042	1.8%	2,722	2.0%
Belltown	302	0.5%	698	0.5%
Burien	1,668	3.0%	4,156	3.0%
Capitol Hill	760	1.3%	1,881	1.4%
Federal Way	1,421	2.5%	3,747	2.7%
King Eastside	969	1.7%	2,222	1.6%
King North/Ballard	1,112	2.0%	2,684	1.9%
King South/Kent	1,663	2.9%	4,764	3.5%
Rainier	1,390	2.5%	3,498	2.5%
Renton	1,412	2.5%	3,547	2.6%
West Seattle	822	1.5%	2,017	1.5%
Region 4 Call Center	29	0.1%	56	0.0%
Region 4 Total	12,590	22.3%	31,992	23.2%
Region 5				
Bremerton	1,647	2.9%	3,725	2.7%
Pierce West/NW WorkFirst	3,774	6.7%	9,650	7.0%
Pierce South	1,531	2.7%	3,770	2.7%
Puyallup	2,761	4.9%	6,357	4.6%
Region 5 Call Center	15	0.0%	33	0.0%
Region 5 Total	9,728	17.2%	23,535	17.0%
Region 6				
Aberdeen	1,101	1.9%	2,467	1.8%
Chehalis	1,082	1.9%	2,602	1.9%
Columbia River	3,814	6.8%	9,404	6.8%
Forks	227	0.4%	520	0.4%
Goldendale	160	0.3%	387	0.3%
Kelso	1,622	2.9%	3,814	2.8%
Long Beach	129	0.2%	293	0.2%
Neah Bay	0	0.0%	0	0.0%
Olympia	1,786	3.2%	4,089	3.0%
Port Angeles	498	0.9%	1,142	0.8%
Port Townsend	172	0.3%	374	0.3%
Shelton	743	1.3%	1,637	1.2%
South Bend	118	0.2%	255	0.2%
Stevenson	113	0.2%	271	0.2%
White Salmon	96	0.2%	246	0.2%
Region 6 Call Center	0	0.0%	0	0.0%
Region 6 Total	11,661	20.6%	27,501	19.9%
State Total	56,501	100.0%	138,071	100.0%

TANF/WorkFirst Program

TANF/SFA Caseload By County of Residence, June 2004

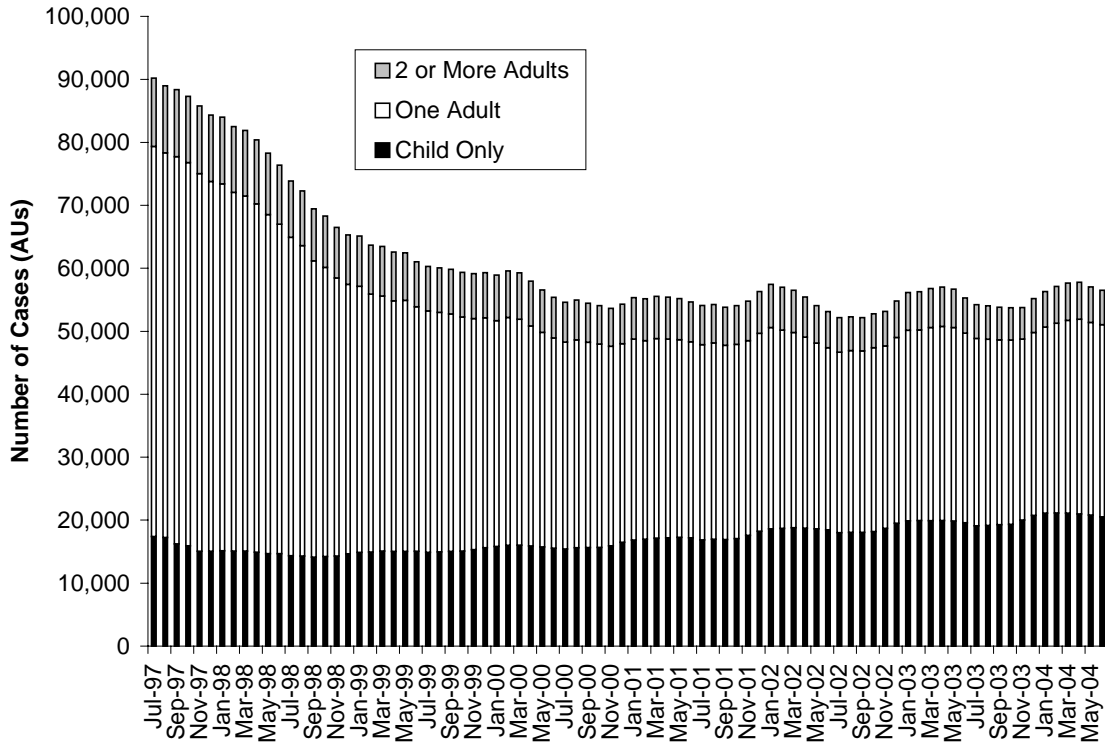
Source: ESA-ACES Data

	Number of Cases	Percent of Cases	Number of Clients	Percent of Clients
Adams	267	0.5%	643	0.5%
Asotin	262	0.5%	645	0.5%
Benton	1,413	2.5%	3,619	2.6%
Chelan	599	1.1%	1,334	1.0%
Clallam	721	1.3%	1,655	1.2%
Clark	3,810	6.7%	9,377	6.8%
Columbia	26	0.0%	67	0.0%
Cowlitz	1,609	2.8%	3,798	2.8%
Douglas	195	0.3%	451	0.3%
Ferry	81	0.1%	212	0.2%
Franklin	930	1.6%	2,284	1.7%
Garfield	20	0.0%	59	0.0%
Grant	1,163	2.1%	2,920	2.1%
Grays Harbor	1,140	2.0%	2,572	1.9%
Island	231	0.4%	521	0.4%
Jefferson	176	0.3%	382	0.3%
King	12,606	22.3%	32,028	23.2%
Kitsap	1,644	2.9%	3,716	2.7%
Kittitas	235	0.4%	576	0.4%
Klickitat	260	0.5%	638	0.5%
Lewis	1,068	1.9%	2,566	1.9%
Lincoln	65	0.1%	140	0.1%
Mason	743	1.3%	1,637	1.2%
Okanogan	421	0.7%	930	0.7%
Pacific	248	0.4%	549	0.4%
Pend Oreille	197	0.3%	478	0.3%
Pierce	8,044	14.2%	19,717	14.3%
San Juan	23	0.0%	44	0.0%
Skagit	1,117	2.0%	2,684	1.9%
Skamania	101	0.2%	240	0.2%
Snohomish	4,016	7.1%	9,707	7.0%
Spokane	4,055	7.2%	9,596	7.0%
Stevens	437	0.8%	1,098	0.8%
Thurston	1,796	3.2%	4,128	3.0%
Wahkiakum	20	0.0%	46	0.0%
Walla Walla	535	0.9%	1,228	0.9%
Whatcom	1,301	2.3%	3,072	2.2%
Whitman	148	0.3%	361	0.3%
Yakima	4,778	8.5%	12,353	8.9%
State Total	56,501	100.0%	138,071	100.0%

TANF/WorkFirst Program

TANF/SFA Caseload By Number of Adults, SFY 2004

Source: ESA-ACES Data

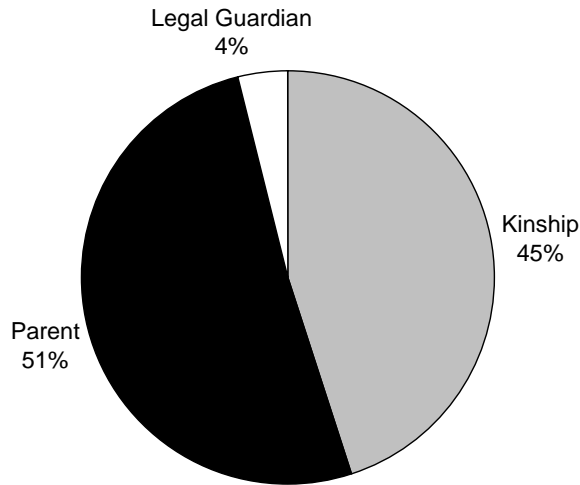


	Caseload	Child-Only		1 Adult		2 or More Adults	
		Number	Percent	Number	Percent	Number	Percent
July	54,239	19,110	35.2%	29,764	54.9%	5,365	9.9%
August	54,023	19,137	35.4%	29,586	54.8%	5,300	9.8%
September	53,820	19,258	35.8%	29,389	54.6%	5,173	9.6%
October	53,728	19,334	36.0%	29,281	54.5%	5,113	9.5%
November	53,783	20,010	37.2%	28,738	53.4%	5,035	9.4%
December	55,186	20,746	37.6%	29,056	52.7%	5,384	9.8%
January	56,313	21,103	37.5%	29,551	52.5%	5,659	10.0%
February	57,101	21,150	37.0%	30,132	52.8%	5,819	10.2%
March	57,664	21,095	36.6%	30,635	53.1%	5,934	10.3%
April	57,781	20,988	36.3%	30,926	53.5%	5,867	10.2%
May	57,066	20,807	36.5%	30,598	53.6%	5,661	9.9%
June	56,501	20,518	36.3%	30,519	54.0%	5,464	9.7%
Mo. Avg.	55,600	20,271	36.5%	29,848	53.7%	5,481	9.9%

TANF/WorkFirst Program

TANF/SFA Child Only Caseload, By Major Caretaker Groups, June 2004

Source: ESA-ACES Data



Caretaker	Child Only Cases	Percent
Total Child Only Cases	20,518	100.0%
Kinship		
Aunt/Uncle	2,735	13.3%
Cousin	183	0.9%
GrandParent	6,089	29.7%
Sibling Parent	371	1.8%
<i>Kinship Total</i>	9,378	45.7%
Parent		
Biological Parent	10,637	51.8%
Co-Parent	9	0.0%
Step Parent	28	0.1%
<i>Parent Total</i>	10,674	51.0%
Legal Guardian	837	4.1%

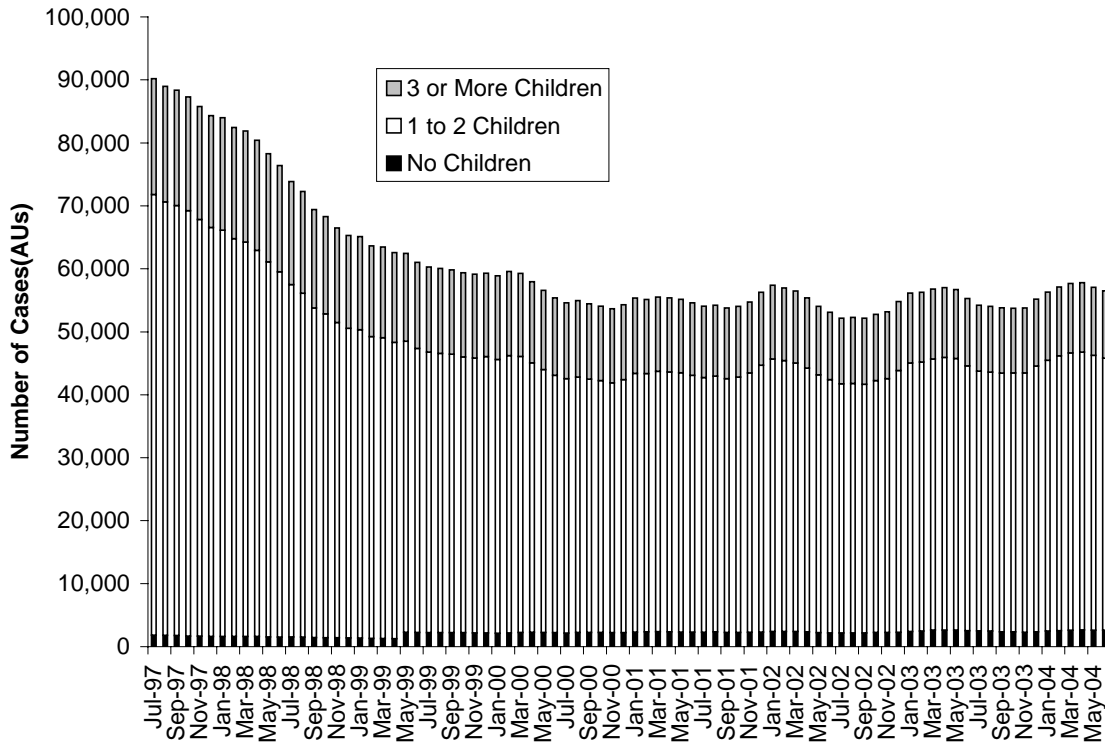
Note: Several cases have more than one child living in the household who are on assistance. Each child may have a different relationship to the head of household member. Percentages are calculated by taking the number of cases by caretaker type as the numerator divided by the unduplicated count of child only cases (19,588) as the denominator. Therefore, percentages sum to more than 100 percent.

Examples of a child-only grant include: child is living with relatives other than the parent(s); parent(s) is disqualified from TANF as a non-U.S. Citizen, fleeing felon, drug-related felon, or was convicted of welfare fraud; child is living with an unrelated adult who exercises day-to-day control and care of the child.

TANF/WorkFirst Program

TANF/SFA Caseload By Number of Children, SFY 2004

Source: ESA-ACES Data



	Caseload	No Children ¹		1 to 2 Children		3 or More Children	
		Number	Percent	Number	Percent	Number	Percent
July	54,239	2,521	4.6%	41,217	76.0%	10,501	19.4%
August	54,023	2,478	4.6%	41,106	76.1%	10,439	19.3%
September	53,820	2,356	4.4%	41,073	76.3%	10,391	19.3%
October	53,728	2,334	4.3%	41,116	76.5%	10,278	19.1%
November	53,783	2,289	4.3%	41,158	76.5%	10,336	19.2%
December	55,186	2,359	4.3%	42,206	76.5%	10,621	19.2%
January	56,313	2,459	4.4%	43,037	76.4%	10,817	19.2%
February	57,101	2,541	4.5%	43,664	76.5%	10,896	19.1%
March	57,664	2,608	4.5%	44,047	76.4%	11,009	19.1%
April	57,781	2,677	4.6%	44,091	76.3%	11,013	19.1%
May	57,066	2,609	4.6%	43,633	76.5%	10,824	19.0%
June	56,501	2,612	4.6%	43,199	76.5%	10,690	18.9%
Mo. Avg.	55,600	2,487	4.5%	42,462	76.4%	10,651	19.2%

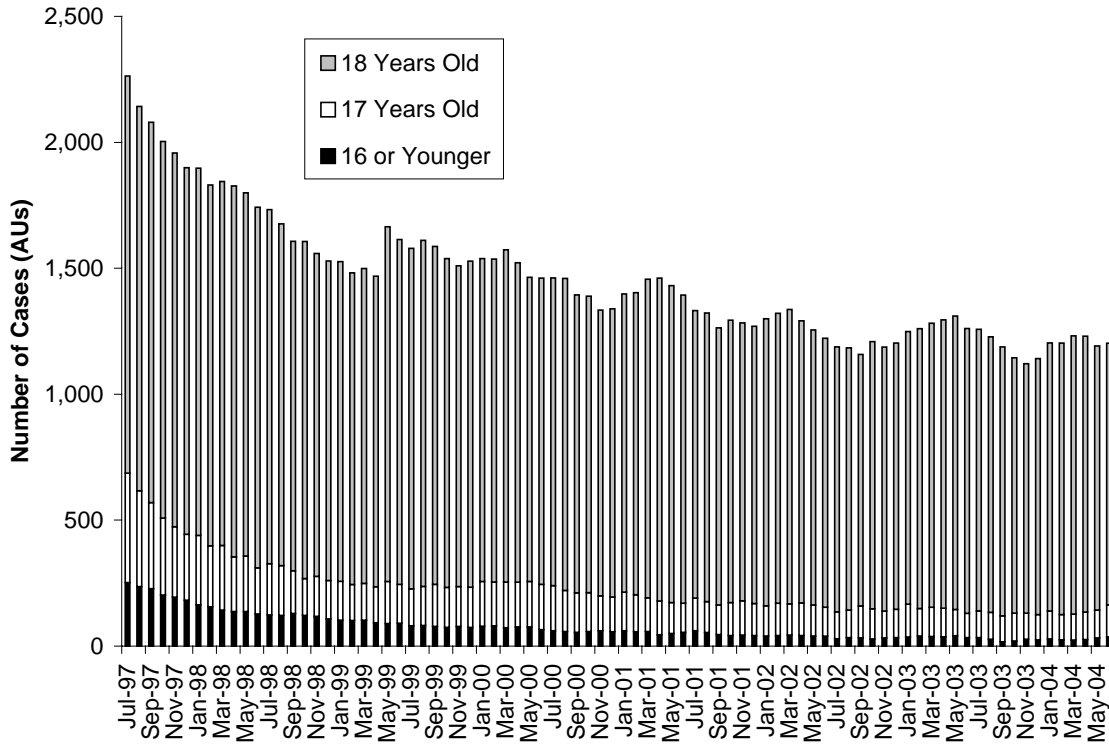
Notes:

¹ In cases where the only children eligible for TANF already receive SSI, the child will not receive a TANF payment but the parent does receive a TANF payment. Also, a pregnant woman with no child is eligible for TANF.

TANF/WorkFirst Program

TANF/SFA Caseload With Teen Head of Household, SFY 2004

Source: ESA-ACES Data



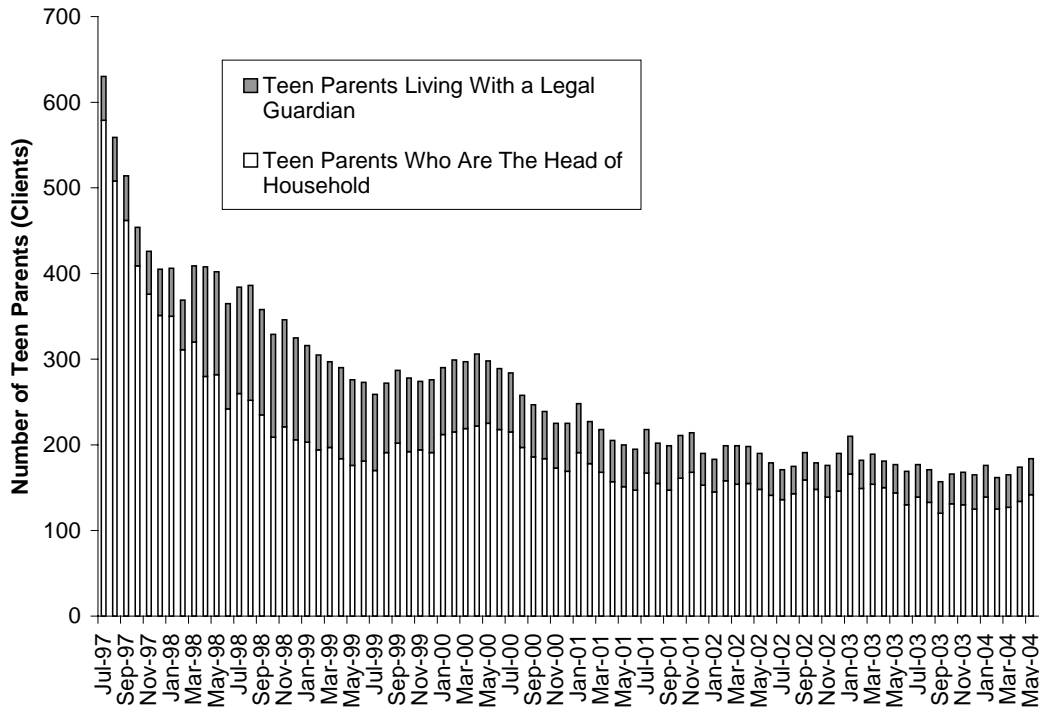
	Adult Caseload	Head of Household is 16 Years Old or Less		Head of Household is 17 Years Old		Head of Household is 18 Years Old	
		Number	Percent	Number	Percent	Number	Percent
July	35,129	34	0.1%	106	0.3%	1,118	3.2%
August	34,886	27	0.1%	107	0.3%	1,094	3.1%
September	34,562	17	0.0%	103	0.3%	1,068	3.1%
October	34,394	20	0.1%	111	0.3%	1,013	2.9%
November	33,773	27	0.1%	104	0.3%	990	2.9%
December	34,440	25	0.1%	100	0.3%	1,016	3.0%
January	35,210	28	0.1%	111	0.3%	1,065	3.0%
February	35,951	25	0.1%	100	0.3%	1,078	3.0%
March	36,569	24	0.1%	103	0.3%	1,105	3.0%
April	36,793	26	0.1%	109	0.3%	1,095	3.0%
May	36,259	32	0.1%	111	0.3%	1,049	2.9%
June	35,983	37	0.1%	127	0.4%	1,038	2.9%
Mo. Avg.	35,329	27	0.1%	108	0.3%	1,061	3.0%

Note: Numbers reflect households where the head of household member is a teen parent living independently from their formal legal guardian.

TANF/WorkFirst Program

Teen Parents Under Age 18, SFY 2004

Source: ESA-ACES Data



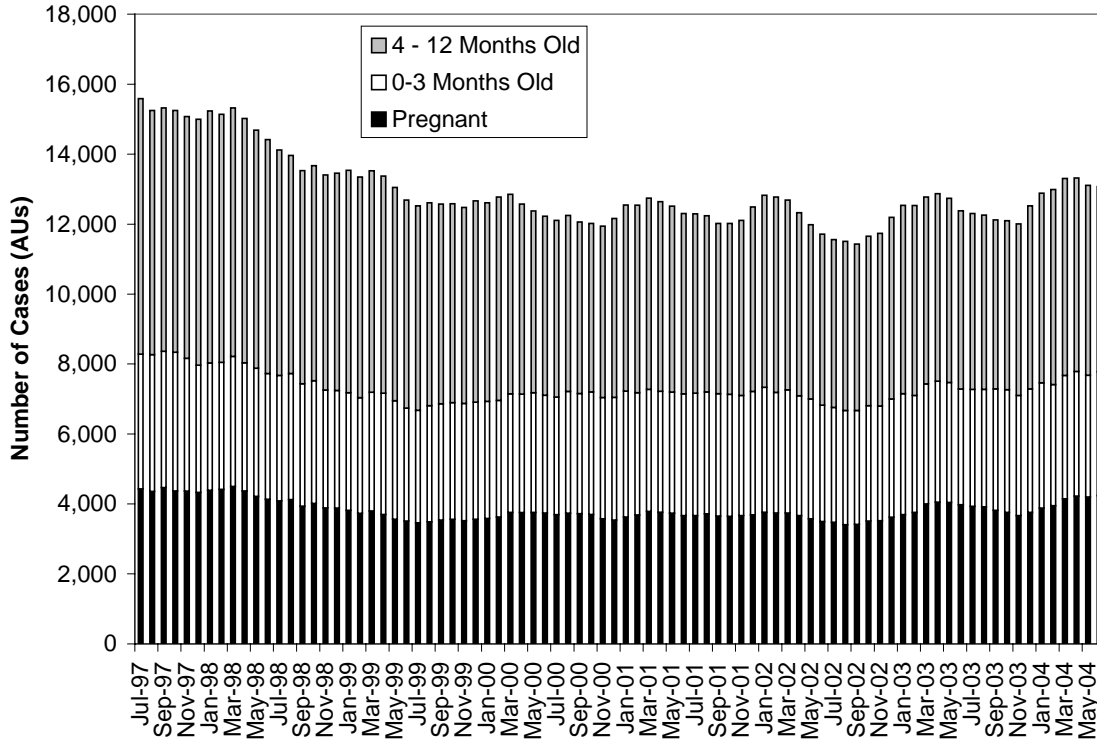
	Total Teen Parents Under Age 18	Teen Parents Living With a Legal Guardian	% Teen Parents Living With a Legal Guardian	Teen Parents Under 18 Living As the Head of Household	% Teen Parents Under 18 Living As the Head of Household
July	177	139	78.5%	38	21.5%
August	171	133	77.8%	38	22.2%
September	157	120	76.4%	37	23.6%
October	166	131	78.9%	35	21.1%
November	168	130	77.4%	38	22.6%
December	165	125	75.8%	40	24.2%
January	176	139	79.0%	37	21.0%
February	162	125	77.2%	37	22.8%
March	165	127	77.0%	38	23.0%
April	174	134	77.0%	40	23.0%
May	184	142	77.2%	42	22.8%
June	196	164	83.7%	32	16.3%
Mo. Avg.	172	134	78.1%	38	21.9%

Note: Teen parents are defined based on the clients head of household relationship code. If the client is coded as a "CP" (child parent), the child is considered to be living under legal guardianship while caring for their own child. If the client is coded as a "SE" (head of household) the client is considered to be the head of household member on the Assistance Unit. Numbers do not reflect spouses or other members that are living in the same AU; Numbers only differentiate clients coded as a CP or a SE.

TANF/WorkFirst Program

TANF/SFA Caseload With Pregnant Women and Children 12 Months or Younger SFY 2004

Source: ESA-ACES Data



	Adult Caseload	Pregnant ¹		0 – 3 Month Old Child		4 – 12 Month Old Child	
		Number	Percent	Number	Percent	Number	Percent
July	35,129	3,931	11.2%	3,345	9.5%	5,031	14.3%
August	34,886	3,920	11.2%	3,355	9.6%	4,984	14.3%
September	34,562	3,816	11.0%	3,474	10.1%	4,827	14.0%
October	34,394	3,757	10.9%	3,513	10.2%	4,829	14.0%
November	33,773	3,666	10.9%	3,433	10.2%	4,902	14.5%
December	34,440	3,761	10.9%	3,533	10.3%	5,231	15.2%
January	35,210	3,877	11.0%	3,587	10.2%	5,419	15.4%
February	35,951	3,952	11.0%	3,463	9.6%	5,573	15.5%
March	36,569	4,147	11.3%	3,525	9.6%	5,632	15.4%
April	36,793	4,226	11.5%	3,565	9.7%	5,524	15.0%
May	36,259	4,195	11.6%	3,486	9.6%	5,430	15.0%
June	35,983	4,239	11.8%	3,539	9.8%	5,295	14.7%
Mo. Avg.	35,329	3,957	11.2%	3,485	9.9%	5,223	14.8%

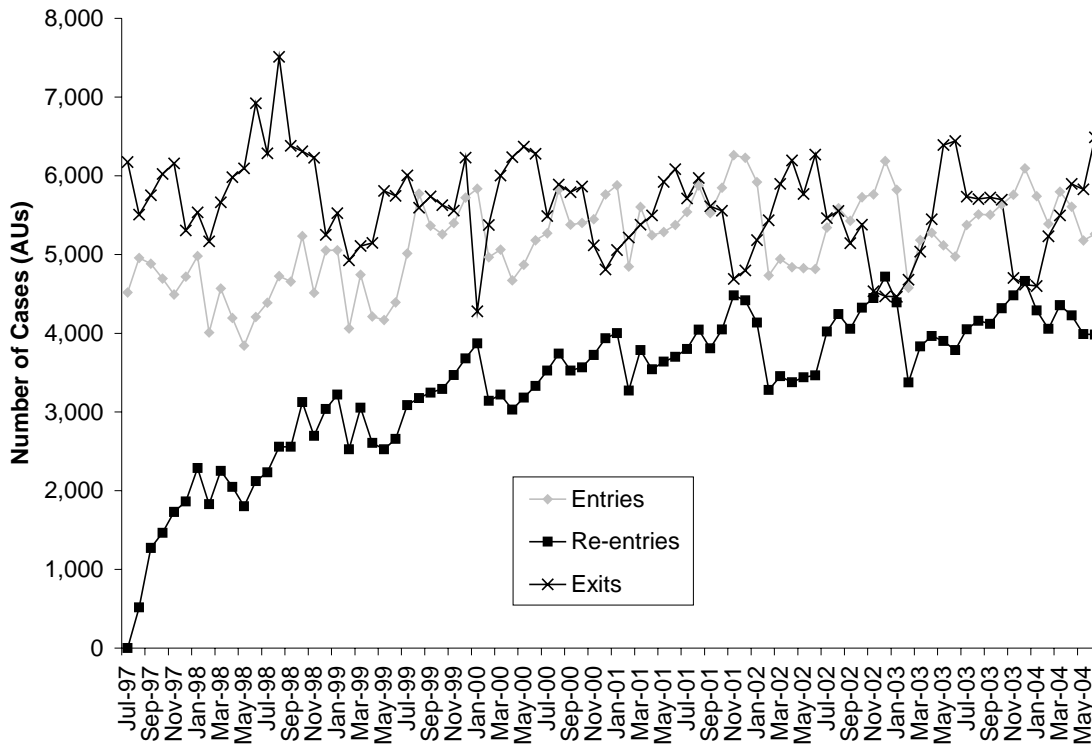
Note: Cases are unduplicated across groups. If a case has multiple young children or a pregnant recipient and a young child, the case category reflects the youngest child. Adults include teen parents.

¹ Pregnant women were identified using pregnancy status data entered in ACES.

TANF/WorkFirst Program

TANF/SFA Cases Entering, Re-Entering, and Exiting, SFY 2004

Source: ESA-ACES Data



	Caseload	Entries		Re-Entries		Exits	
		Number	Percent	Number	Percent	Number	Percent
July	54,239	5,377	9.9%	4,049	7.5%	5,736	10.6%
August	54,023	5,511	10.2%	4,159	7.7%	5,705	10.6%
September	53,820	5,504	10.2%	4,120	7.7%	5,726	10.6%
October	53,728	5,636	10.5%	4,317	8.0%	5,698	10.6%
November	53,783	5,760	10.7%	4,481	8.3%	4,703	8.7%
December	55,186	6,097	11.0%	4,665	8.5%	4,617	8.4%
January	56,313	5,741	10.2%	4,290	7.6%	4,600	8.2%
February	57,101	5,390	9.4%	4,056	7.1%	5,231	9.2%
March	57,664	5,798	10.1%	4,357	7.6%	5,497	9.5%
April	57,781	5,608	9.7%	4,228	7.3%	5,899	10.2%
May	57,066	5,179	9.1%	3,989	7.0%	5,829	10.2%
June	56,501	5,261	9.3%	3,984	7.1%	6,489	11.5%
Mo. Avg.	55,600	5,572	10.0%	4,225	7.6%	5,478	9.9%

Note: Entries are defined as cases that were not on TANF the month prior to what is reported. Exits are defined as cases that received a benefit in the month reported, but not in the subsequent month. Re-entries are defined as cases that received a benefit in the month reported, but not in the subsequent month AND have received TANF at least one month before re-entering TANF.

TANF/WorkFirst Program

Adults Returning to TANF/SFA After Six Months and 12 Months After Exit SFY 2004

Source: OFM



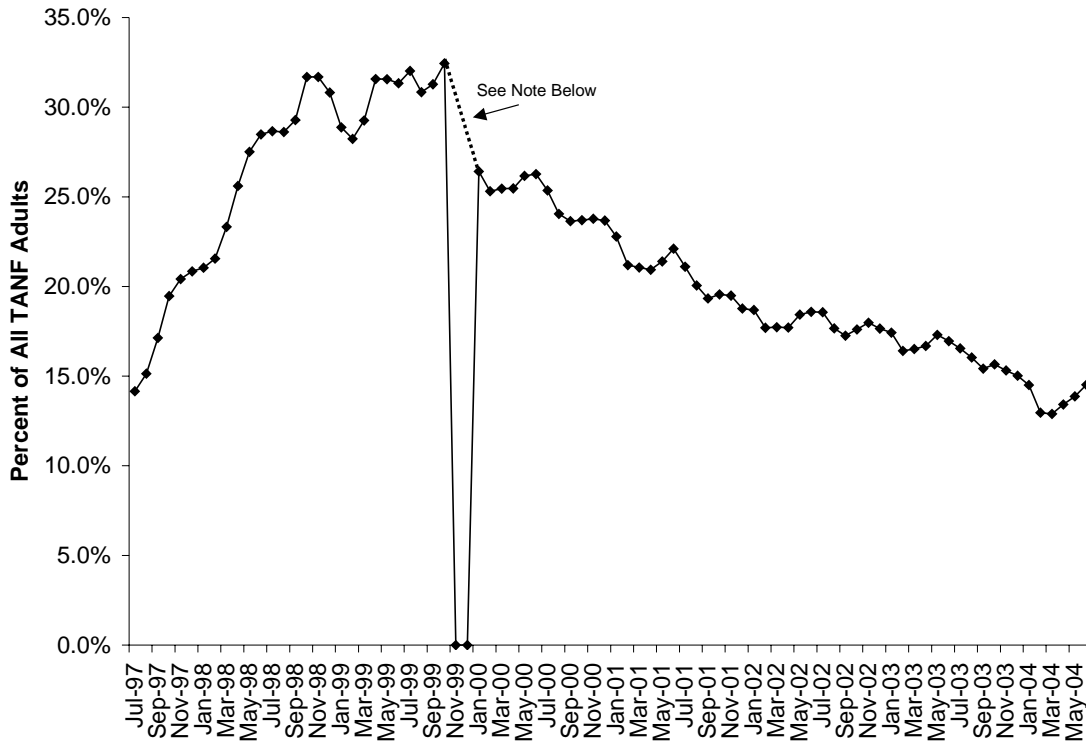
	Adults Exiting	Return After 6 Months		Return After 12 Months	
		Number	Percent	Number	Percent
July	5,991	1175	19.6	1076	18.0
August	5,684	1096	19.3	994	17.5
September	5,523	1131	20.5	950	17.2
October	5,904	1314	22.3	0	0.0
November	5,542	1211	21.9	0	0.0
December	4,483	946	21.1	0	0.0
January	4,716	886	18.8	0	0.0
February	4,365	837	19.2	0	0.0
March	4,999	863	17.3	0	0.0
April	5,769	0	0	0	0.0
May	5,762	0	0.0	0	0.0
June	5,599	0	0.0	0	0.0

Note: Table shows the number of adults who have returned on the sixth month and on the 12th month after exiting. For example, of all the adults exiting in July 2003 (5,991), 1,175 or 19.6 percent of them returned and received TANF on the sixth month after July, in this case receiving TANF in January 2004. Likewise, of the 5,991 adults exiting in July 2003, 1,076 of them or 18.0 percent returned and were receiving TANF on the 12th month after July, in this case June 2004. The latest month available for those returning after 12 months is September 2003 (returning and receiving TANF in September 2004). The latest available data for those returning after 6 months is March 2004 (returning and receiving TANF in September 2004).

TANF/WorkFirst Program

Employed TANF/SFA Adults, SFY 2004

Source: ESA-ACES Data



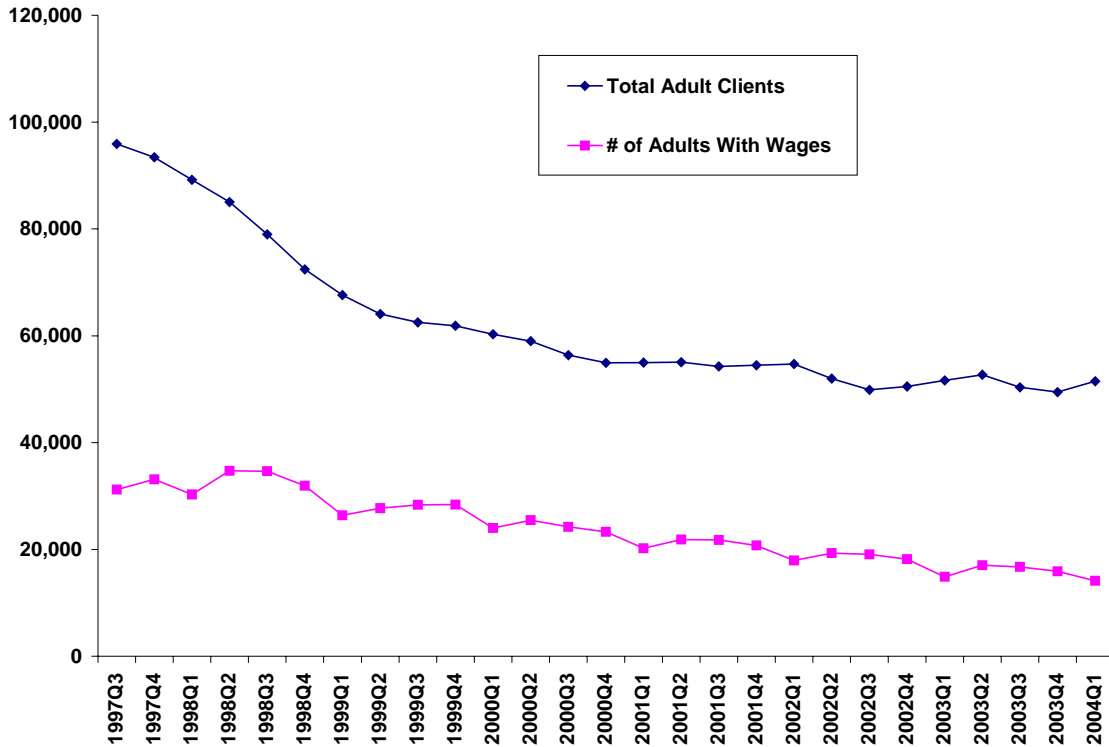
	TANF Adults	Employed Number	Employed Percent
July	40,474	6,698	16.5%
August	40,167	6,443	16.0%
September	39,727	6,124	15.4%
October	39,491	6,184	15.7%
November	38,796	5,943	15.3%
December	39,820	5,984	15.0%
January	40,864	5,927	14.5%
February	41,758	5,413	13.0%
March	42,492	5,478	12.9%
April	42,654	5,725	13.4%
May	41,909	5,812	13.9%
June	41,441	6,014	14.5%
Mo. Avg.	40,799	5,979	14.7%

Note: Employment is identified using data in the ACES system. Adults include teen parents. Also note that in January 2000, ESA switched from retrospective budgeting to prospective budgeting. Because of that change, October 1999 - December 1999 income was not used to budget benefit amounts. Therefore, employment data for those months is considered unreliable.

TANF/WorkFirst Program

TANF/SFA Adults Receiving Quarterly Wages, SFY 2004

Source: ESA-ACES Data and ESD-UI Wage Data



Quarter	Total Adult Clients	# With Quarterly Wages	% With Quarterly Wages	Total Quarterly Wages	Total Quarterly Wages/Hr.
2001Q1	54,979	20,235	36.8%	\$1,660	\$8.79
2001Q2	55,040	21,840	39.7%	\$1,708	\$8.76
2001Q3	54,256	21,783	40.1%	\$1,718	\$8.89
2001Q4	54,472	20,746	38.1%	\$1,760	\$8.98
2002Q1	54,727	17,947	32.8%	\$1,648	\$9.03
2002Q2	51,992	19,321	37.2%	\$1,699	\$8.96
2002Q3	49,865	19,069	38.2%	\$1,729	\$9.05
2002Q4	50,531	18,181	36.0%	\$1,772	\$9.19
2003Q1	51,666	14,898	28.8%	\$1,637	\$9.22
2003Q2	52,712	17,025	32.3%	\$1,725	\$9.25
2003Q3	50,360	16,736	33.2%	\$1,728	\$9.30
2003Q4	49,456	15,888	32.1%	\$1,760	\$9.39
2004Q1	51,487	14,109	27.4%	\$1,586	\$9.41

Notes:

TANF Adult clients are matched with the Economic Services Division (ESD) UI Wage Data file by Social Security Number (SSN). Numbers reflect TANF adult client who are employed and received wages of more than \$5.00 for any length of time during a quarter.

TANF/WorkFirst Program

TANF/SFA Cases With Adults in WorkFirst Sanction Status, SFY 2004

Source: ESA-ACES Data

	TANF Cases With Adults	Total Cases Sanctioned	% of Cases Sanctioned	TANF Adults	TANF Adults Sanctioned	% of TANF Adults Sanctioned
July	35,129	5,690	16.2%	40,474	6,502	16.1%
August	34,886	5,953	17.1%	40,167	6,784	16.9%
September	34,562	5,947	17.2%	39,727	6,801	17.1%
October	34,394	5,986	17.4%	39,491	6,833	17.3%
November	33,773	5,956	17.6%	38,796	6,783	17.5%
December	34,440	6,079	17.7%	39,820	6,910	17.4%
January	35,210	6,410	18.2%	40,864	7,278	17.8%
February	35,951	6,373	17.7%	41,758	7,235	17.3%
March	36,569	6,286	17.2%	42,492	7,110	16.7%
April	36,793	6,028	16.4%	42,654	6,815	16.0%
May	36,259	5,545	15.3%	41,909	6,255	14.9%
June	35,983	5,450	15.1%	41,441	6,167	14.9%
Mo. Avg.	35,329	5,975	16.9%	40,799	6,789	16.6%

TANF/SFA Cases With Adults in WorkFirst Sanction Status By Consecutive Months in Sanctioned Status, SFY 2004

Source: ESA-ACES Data

	Total Cases Sanctioned	First Month		Second Month		Third Month or Later	
		Number	Percent	Number	Percent	Number	Percent
July	5,690	1,692	29.7%	1,083	19.0%	2,916	51.2%
August	5,953	1,909	32.1%	1,120	18.8%	2,924	49.1%
September	5,947	1,755	29.5%	1,238	20.8%	2,954	49.7%
October	5,986	1,787	29.9%	1,162	19.4%	3,037	50.7%
November	5,956	1,773	29.8%	1,149	19.3%	3,034	50.9%
December	6,079	1,596	26.3%	1,237	20.3%	3,246	53.4%
January	6,410	1,821	28.4%	1,122	17.5%	3,467	54.1%
February	6,373	1,615	25.3%	1,239	19.4%	3,519	55.2%
March	6,286	1,661	26.4%	1,037	16.5%	3,588	57.1%
April	6,028	1,508	25.0%	1,057	17.5%	3,463	57.4%
May	5,545	1,261	22.7%	924	16.7%	3,360	60.6%
June	5,450	1,341	24.6%	851	15.6%	3,258	59.8%
Mo. Avg.	5,975	1,643	27.5%	1,102	18.4%	3,231	54.1%

Note: Total cases sanctioned reflect all TANF cases in Sanction status. A sanctioned case in sanction three or more months is considered a long-term sanctioned case.

TANF/WorkFirst Program

TANF/SFA Client Demographics, June 2004

Source: ESA-ACES Data

Characteristic	All Clients (138,071)	Percent	All Adults (41,441)	Percent	All Children (96,632)	Percent
Gender						
Female	81,447	59.0%	33,293	80.3%	48,154	49.8%
Male	56,624	41.0%	8,148	19.7%	48,476	50.2%
Race						
White	74,358	53.9%	25,831	62.3%	48,527	50.2%
Hispanic	23,256	16.8%	4,295	10.4%	18,961	19.6%
Black	17,660	12.8%	5,344	12.9%	12,316	12.7%
Asian/Pacific Islander	4,969	3.6%	1,498	3.6%	3,471	3.6%
Native American	6,018	4.4%	1,972	4.8%	4,046	4.2%
Unknown	11,810	8.6%	2,501	6.0%	9,309	9.6%
Marital Status (Adults Only)						
Separated	5,789	4.2%	5,789	14.0%	N/A	N/A
Married	9,530	6.9%	9,530	23.0%	N/A	N/A
Never Married	19,948	14.4%	19,948	48.1%	N/A	N/A
Divorced	5,758	4.2%	5,758	13.9%	N/A	N/A
Widow	248	0.2%	248	0.6%	N/A	N/A
Unknown	168	0.1%	168	0.4%	N/A	N/A
Citizenship						
U.S. Citizen	128,111	92.8%	36,702	88.6%	91,409	94.6%
Resident Alien	9,705	7.0%	4,635	11.2%	5,070	5.2%
U.S. National	255	0.2%	104	0.3%	151	0.2%
Age						
< 17 Years Old	91,619	66.4%	50	0.1%	91,569	94.8%
17 Years Old	3,466	2.5%	140	0.3%	3,326	3.4%
18 Years Old	2,537	1.8%	1,091	2.6%	1,446	1.5%
19 – 20 Years Old	3,754	2.7%	3,465	8.4%	289	0.3%
21 – 29 Years Old	16,300	11.8%	16,300	39.3%	0	0.0%
30 – 39 Years Old	12,291	8.9%	12,291	29.7%	0	0.0%
40 – 49 Years Old	6,628	4.8%	6,628	16.0%	0	0.0%
50 – 55 Years Old	1,074	0.8%	1,074	2.6%	0	0.0%
56 – 59 Years Old	258	0.2%	258	0.6%	0	0.0%
60 – 64 Years Old	117	0.1%	117	0.3%	0	0.0%
65+ Years Old	27	0.0%	27	0.1%	0	0.0%
Mean Age of Children	8.0 Years Old		N/A		8.0 Years Old	
Median Age of Children	7.0 Years Old		N/A		7.0 Years Old	
Mean Age of Adults	31.4 Years Old		31.4 Years Old		N/A	
Median Age of Adults	29.0 Years Old		29.0 Years Old		N/A	

Note: Adults and children are defined based on the clients head of household relationship code. Adults under the age of 18 include teen head of household members, a teen spouse to the head of household member, one coded as an aunt or uncle, and a unmarried teen sharing the child with the head of household member. Examples of overage children are those who remain under legal guardianship or are a biological child, a dependent sibling, a niece/nephew, a foster child, a dependent first cousin, or a grandchild.

TANF/WorkFirst Program

TANF/SFA Client Demographics, June 2004

Source: ESA-ACES Data

Characteristic	All Clients (138,071)		All Adults (41,441)		All Children (96,632)	
		Percent		Percent		Percent
Avg./Median Months on Assistance Since July 1997 as an Adult		N/A		Average: 24.5 Months		N/A
				Median: 18.0 Months		

TANF/WorkFirst Program

TANF/SFA Child Demographics, June 2004

Source: ESA-ACES Data

Characteristic	All Children (96,632)		Children in Child Only Cases (33,086)	
		Percent		Percent
Gender				
Female	48,154	49.8%	16,769	50.7%
Male	48,476	50.2%	16,317	49.3%
Race				
White	48,527	50.2%	14,533	43.9%
Hispanic	18,961	19.6%	9,959	30.1%
Black	12,316	12.7%	3,454	10.4%
Asian/Pacific Islander	3,471	3.6%	1,162	3.5%
Native American	4,046	4.2%	1,399	4.2%
Unknown	9,309	9.6%	2,579	7.8%
Citizenship				
U.S. Citizen	91,409	94.6%	32,474	98.2%
Resident Alien	5,070	5.2%	563	1.7%
U.S. National	151	0.2%	49	0.1%
Age				
< 17 Years Old	91,569	94.8%	30,716	92.8%
17 Years Old	3,326	3.4%	1,526	4.6%
18 Years Old	1,446	1.5%	715	2.2%
19 – 20 Years Old	289	0.3%	129	0.4%
Mean Age of Children	8.0 Years Old		9.1 Years Old	
Median Age of Children	7.0 Years Old		7.0 Years Old	