

Child Care

The Division of Child Care and Early Learning (DCCEL) was created in July 2001 to consolidate state child care responsibilities and improve the overall administration and quality of the state's child care programs. DCCEL is responsible for establishing Working Connections Child Care (WCCC) policy and procedures, licensing child care centers and family home providers, and for the overall integrity of Washington State's child care programs. Two major child care programs previously run by the Children's Administration, Seasonal and Homeless child care, were moved from Children's to the newly formed division in July 2001.

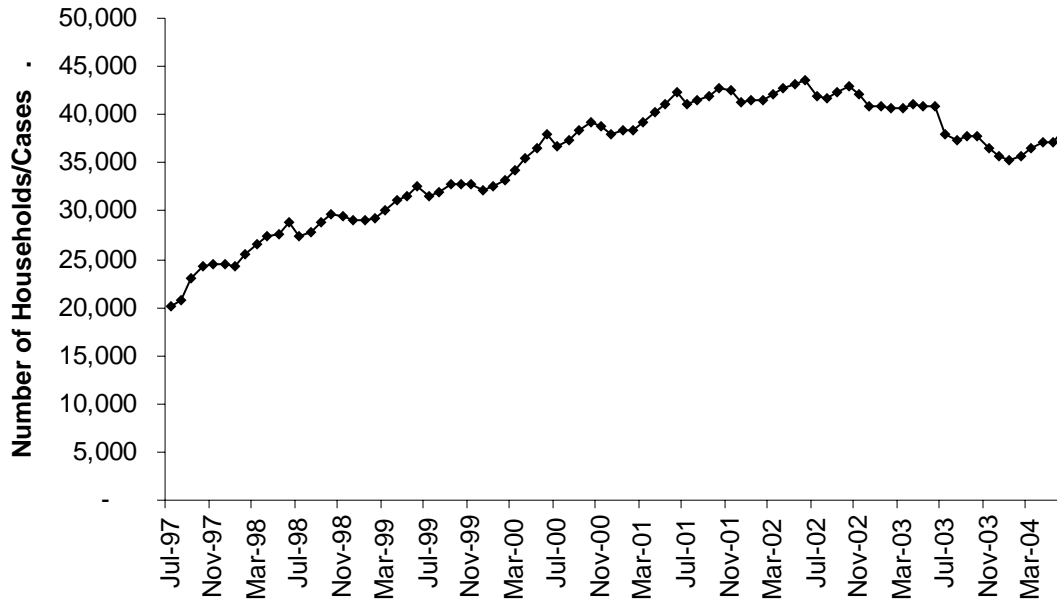
Highlights:

- **The average number of households served per month in Working Connections Child Care declined from 41,406 in SFY 2003 to 36,922 in SFY 2004. The average number of children served per month declined from 70,709 in SFY 2003 to 62,186 in SFY 2004.**
- **The percent of households served by Working Connections Child Care that are not receiving TANF benefits remained stable at 81% in SFY 2004.**
- The percent of children served by Working Connections Child Care that are cared for in a setting exempt from licensing regulations has declined steadily, **hitting a new low of 23% for non-TANF children and 20% for TANF children in SFY 2004.**
- **Center care is the most commonly used type of care for children in Working Connections Child Care, being the only type of subsidized care used by 54% of TANF children and 46% of non-TANF children. Overall, 47% of children using subsidized child care in SFY 2004 were only in center care, a rise from 42% in SFY 2003.**
- **The drop in use of exempt care for SFY 2004 occurred in all age categories, declining from 36% to 22% for infants, 29% to 20% for toddlers, 25% to 18% for preschoolers, and 36% to 28% for school-age children.**
- **Over half (53%) of all preschool age children in subsidized child care attended child care centers.**
- **The number of children served in the Homeless program increased from 1,479 in SFY 2003 to 2,031 in SFY 2004.**

Child Care

Working Connections Child Care Cases SFY 1998 to SFY 2004

Source: SSPS Payment History



	SFY1998	SFY1999	SFY2000	SFY2001	SFY2002	SFY2003	SFY2004
--	---------	---------	---------	---------	---------	---------	---------

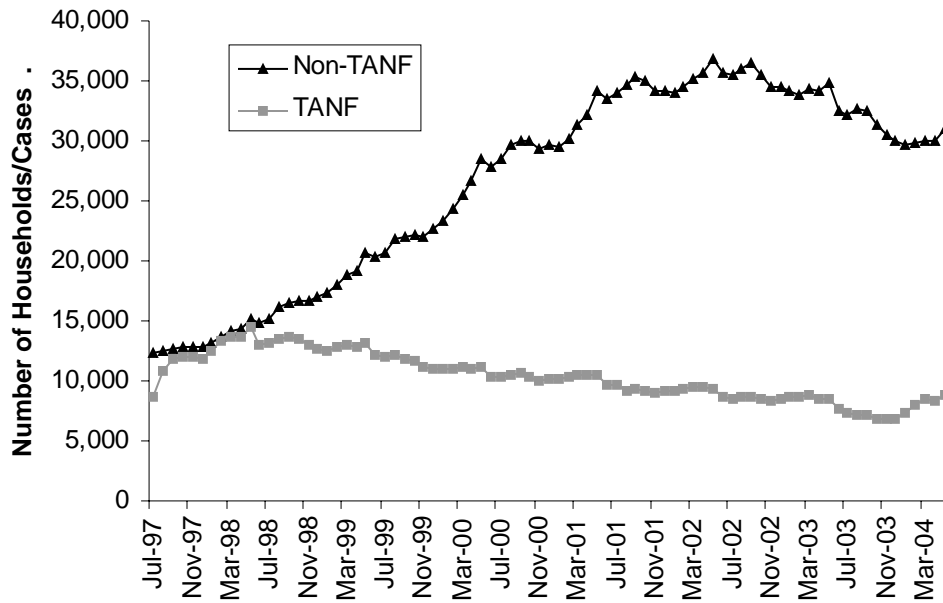
July	20,166	27,342	31,597	36,634	41,077	41,815	37,956
August	20,752	27,821	31,936	37,385	41,407	41,655	37,277
September	23,080	28,940	32,893	38,453	41,948	42,370	37,703
October	24,299	29,635	32,907	39,135	42,776	43,028	37,835
November	24,489	29,601	32,898	38,904	42,443	42,127	36,564
December	24,491	29,085	32,126	37,964	41,278	40,820	35,620
January	24,334	28,991	32,665	38,381	41,472	40,912	35,245
February	25,453	29,198	33,287	38,448	41,482	40,761	35,596
March	26,609	30,227	34,290	39,195	42,086	40,692	36,557
April	27,334	31,162	35,548	40,320	42,836	41,020	37,183
May	27,599	31,500	36,596	40,996	43,198	40,770	37,215
June	28,928	32,715	37,942	42,375	43,644	40,746	38,317
Monthly Avg.	24,795	29,685	33,724	39,016	42,137	41,393	36,922

Note: Cases are unduplicated based on information from the name, date of birth and social security fields.

Child Care

Working Connections Child Care Cases by TANF Status SFY 1998 to SFY 2004

Source: SSPS Payment File



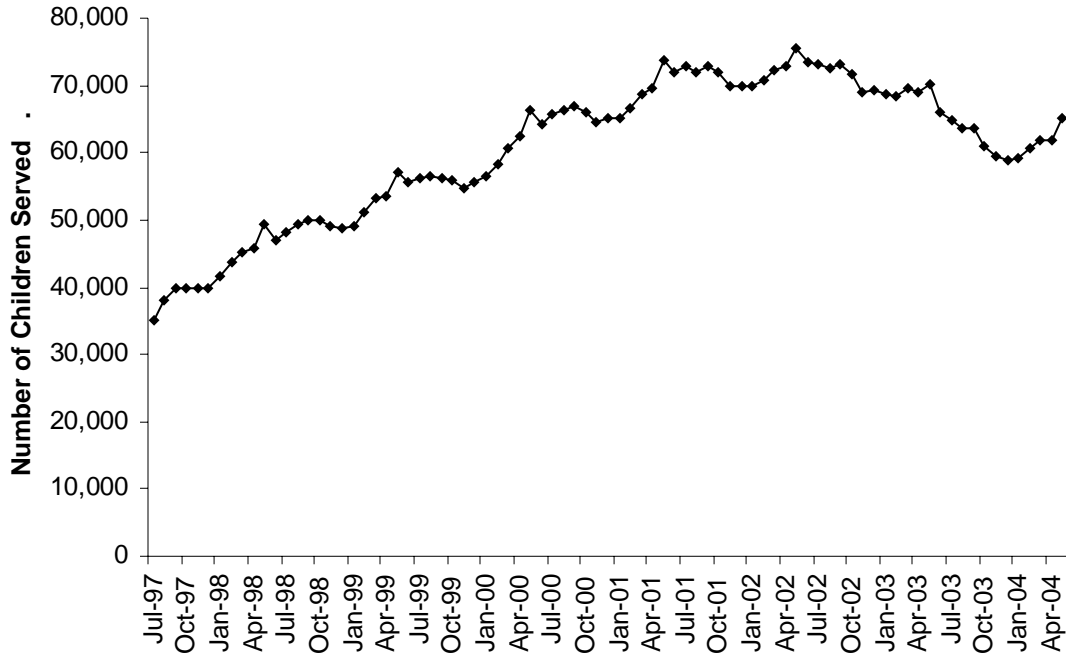
	Total	TANF		Non-TANF	
		Number	Percent	Number	Percent
July	37,956	7,739	19.2%	32,532	80.8%
August	37,277	7,332	18.6%	32,109	81.4%
September	37,703	7,117	17.9%	32,622	82.1%
October	37,835	7,169	18.0%	32,552	82.0%
November	36,564	6,895	18.1%	31,292	81.9%
December	35,620	6,819	18.3%	30,429	81.7%
January	35,245	6,878	18.7%	29,948	81.3%
February	35,596	7,364	19.9%	29,612	80.1%
March	36,557	8,042	21.2%	29,850	78.8%
April	37,183	8,426	21.9%	30,041	78.1%
May	37,215	8,387	21.8%	30,006	78.2%
June	38,317	8,805	22.1%	31,029	77.9%
Monthly Avg.	36,922	7,581	19.6%	31,002	80.4%

Note: Cases are unduplicated based on information from the name, date of birth and social security fields. The sum of TANF and non-TANF cases will be greater than the total number of cases because some cases may be coded both as TANF and non-TANF cases.

Child Care

Children Served by Working Connections Child Care SFY 1998 to SFY 2004

Source: SSPS Payment File



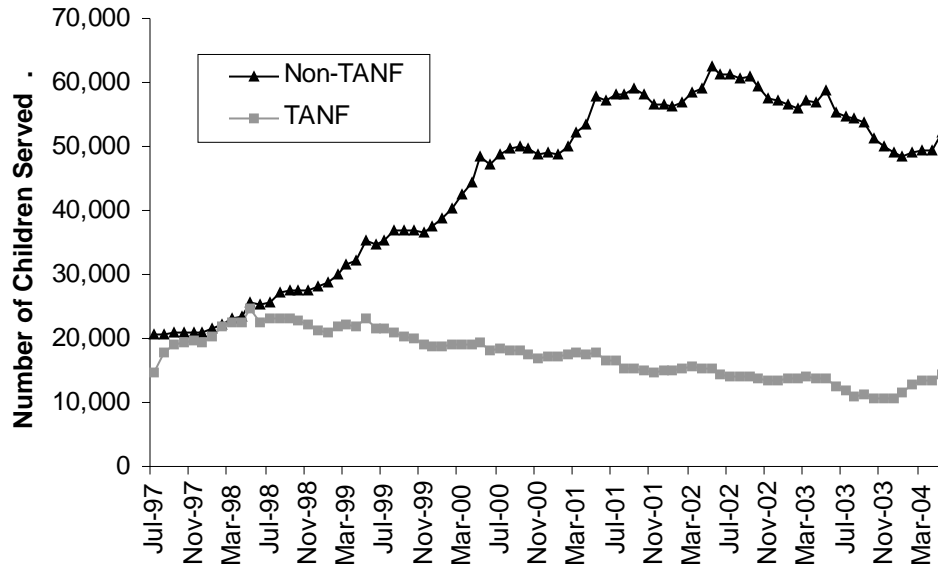
	SFY1998	SFY1999	SFY2000	SFY2001	SFY2002	SFY2003	SFY2004
July	33,889	47,121	55,552	64,344	72,021	73,327	65,968
August	35,012	48,176	56,134	65,770	72,807	73,165	64,846
September	38,066	49,410	56,619	66,266	71,890	72,689	63,750
October	39,730	50,076	56,263	66,830	72,820	73,265	63,505
November	39,941	49,857	56,014	66,160	71,883	71,526	60,940
December	39,999	49,045	54,801	64,605	69,846	69,142	59,582
January	39,851	48,680	55,590	65,084	69,935	69,276	58,789
February	41,616	49,134	56,509	65,070	69,847	68,673	59,210
March	43,737	51,166	58,226	66,485	70,802	68,546	60,777
April	45,349	53,119	60,739	68,758	72,402	69,579	61,941
May	45,681	53,581	62,432	69,679	72,944	68,997	61,813
June	49,350	57,235	66,266	73,731	75,481	70,321	65,105
Monthly Avg.	41,018	50,550	57,929	66,899	71,890	70,709	62,186

Note: Children are unduplicated based on information from the name and date of birth fields for the service recipient as well as information from the primary recipient field.

Child Care

Children Served by Working Connections Child Care, by TANF Status SFY 1998 to SFY 2004

Source: SSPS Payment File



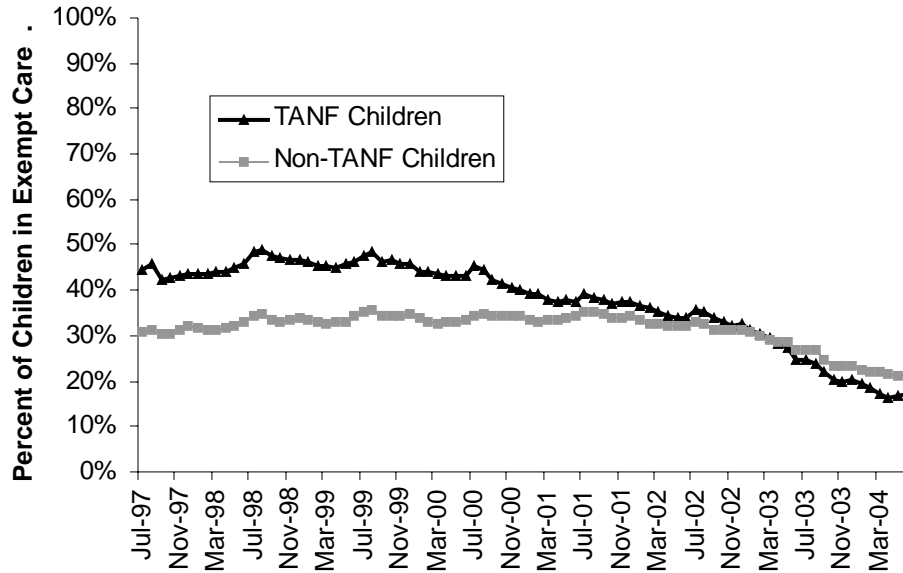
	Total	TANF		Non-TANF	
		Number	Percent	Number	Percent
July	65,968	12,568	18.5%	55,394	81.5%
August	64,846	11,906	17.9%	54,768	82.1%
September	63,750	11,081	17.0%	54,227	83.0%
October	63,505	11,184	17.2%	53,730	82.8%
November	60,940	10,704	17.3%	51,256	82.7%
December	59,582	10,590	17.5%	50,061	82.5%
January	58,789	10,753	18.0%	49,096	82.0%
February	59,210	11,616	19.3%	48,538	80.7%
March	60,777	12,730	20.6%	48,981	79.4%
April	61,941	13,360	21.3%	49,493	78.7%
May	61,813	13,324	21.3%	49,374	78.7%
June	65,105	14,269	21.4%	52,265	78.6%
Monthly Avg.	62,186	12,007	18.9%	51,432	81.1%

Note: Children are unduplicated based on information from the name and date of birth fields for the service recipient as well as information from the primary recipient field. The sum of TANF and non-TANF children will be greater than the total number of children because some children may be coded both as TANF and non-TANF children.

Child Care

Percent of Children in Working Connections Child Care in Exempt Care by TANF Status, SFY 1998 to SFY 2004

Source: SSPS Payment File



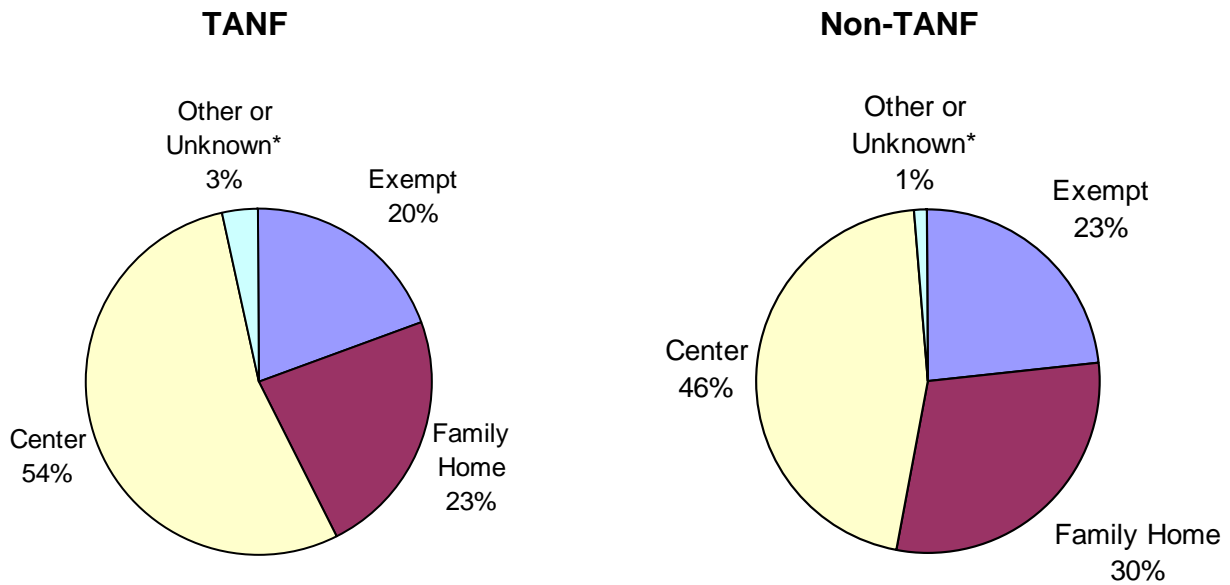
	TANF		Non-TANF	
	Number in Exempt Care	% Exempt Care	Number in Exempt Care	% Exempt Care
July	3,079	24.5%	14,974	27.0%
August	2,812	23.6%	14,606	26.7%
September	2,428	21.9%	13,288	24.5%
October	2,246	20.1%	12,453	23.2%
November	2,128	19.9%	11,879	23.2%
December	2,169	20.5%	11,642	23.3%
January	2,065	19.2%	11,037	22.5%
February	2,127	18.3%	10,742	22.1%
March	2,178	17.1%	10,838	22.1%
April	2,193	16.4%	10,664	21.5%
May	2,240	16.8%	10,499	21.3%
June	2,441	17.1%	11,223	21.5%
Monthly Avg.	2,342	19.6%	11,987	23.2%

Note: Children receiving care from more than one type of provider are coded to just one type of provider using the following logic: exempt, if any exempt care provider is used; family home, if no exempt care provider is used and the child is cared for by a licensed family home provider; and center if a child is cared for by a center provider and not an exempt provider or a licensed family home provider. Exempt care is child care that is exempt from licensing and is provided either in the child's home or in the home of a relative. If a child used both exempt and licensed care in a given month, the child was counted as using exempt care.

Child Care

Percent of Children Using Working Connections Child Care by Facility Type and TANF Status, SFY 2004

Source: SSPS Payment File



	TANF				Non-TANF			
	Exempt	Family Home	Center	Other or Unknown*	Exempt	Family Home	Center	Other or Unknown*
July	3,079	2,769	6,198	522	14,974	15,977	23,524	919
August	2,812	2,619	5,992	483	14,606	15,941	23,382	839
September	2,428	2,458	5,700	495	13,288	16,497	23,511	931
October	2,246	2,466	6,013	459	12,453	16,351	24,298	628
November	2,128	2,394	5,845	337	11,879	15,097	23,759	521
December	2,169	2,349	5,725	347	11,642	14,552	23,367	500
January	2,065	2,373	5,951	364	11,037	14,376	23,130	553
February	2,127	2,656	6,500	333	10,742	14,288	23,067	441
March	2,178	3,050	7,148	354	10,838	14,429	23,300	414
April	2,193	3,279	7,507	381	10,664	14,717	23,675	437
May	2,240	3,294	7,470	320	10,499	14,764	23,695	416
June	2,441	3,477	7,871	480	11,223	15,754	24,679	609
Monthly Avg.	2,342	2,765	6,493	406	11,987	15,229	23,616	601
Monthly Avg. Pct	20%	23%	54%	3%	23%	30%	46%	1%

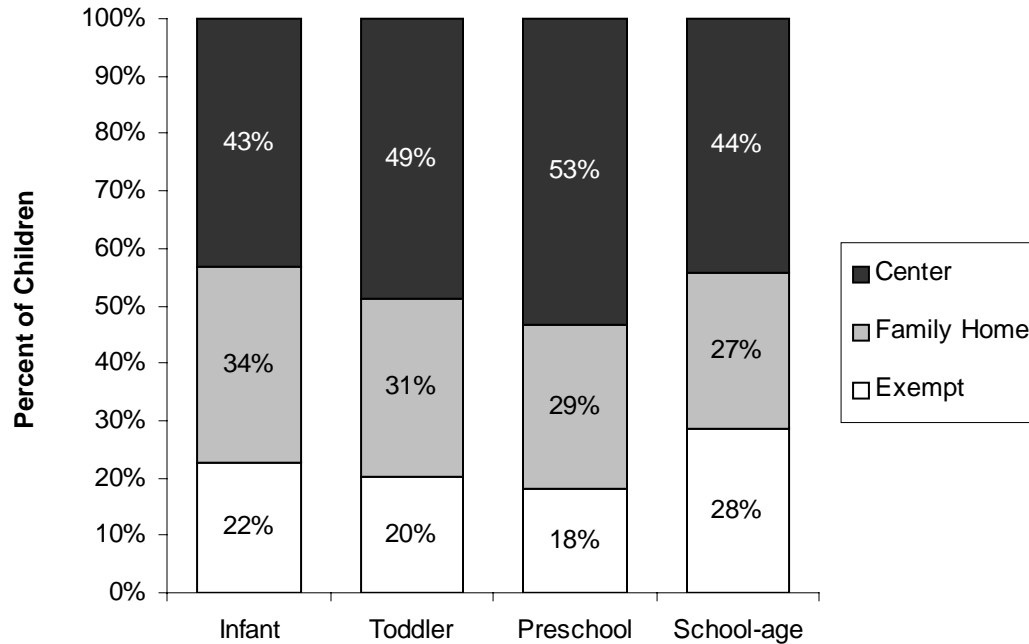
Note: Children receiving care from more than one type of provider are coded to just one type of provider using the following logic: exempt, if any exempt care provider is used; family home, if no exempt care provider is used and the child is cared for by a licensed family home provider; and center if a child is cared for by a center provider and not an exempt provider or a licensed family home provider. Exempt care is child care that is exempt from licensing and is provided either in the child's home or in the home of a relative. If a child used both exempt and licensed care in a given month, the child was counted as using exempt care.

* Other or Unknown are either summer camps exempt from licensing but not in home or relative care or coded licensed care but not clearly identified as a center or family home.

Child Care

Average Number/Percent of Children Served in Working Connections Child Care Per Month By Facility Type and Age of Child, SFY 2004

Source: SSPS Payment File



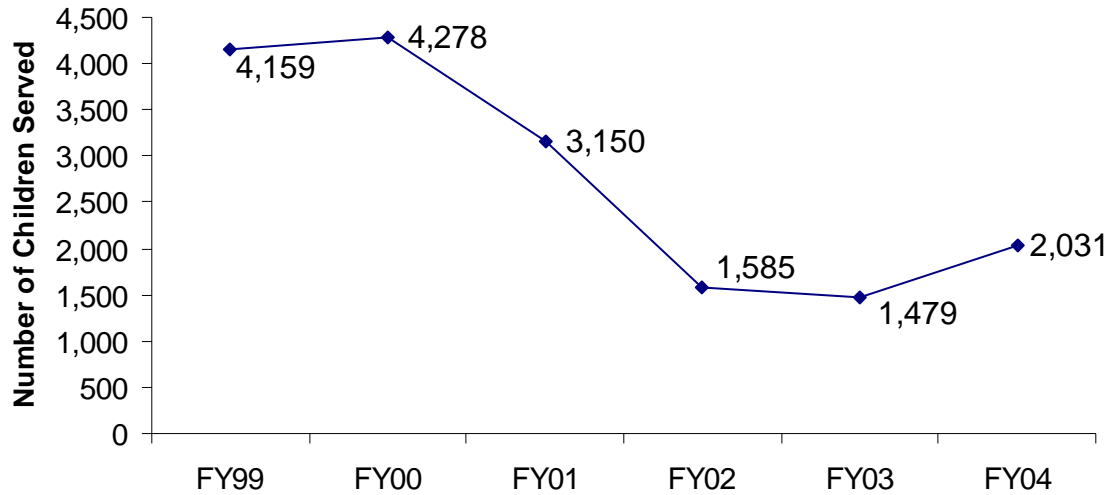
	Infant		Toddler		Preschool		School-Age	
	Number	Percent	Number	Percent	Number	Percent	Number	Percent
Exempt	838	22%	2,048	20%	3,973	18%	7,372	28%
Family Homes	1,262	34%	3,105	31%	6,362	29%	7,056	27%
Center	1,609	43%	4,923	49%	11,720	53%	11,444	44%
Other or Unknown	28	1%	37	0%	85	0%	324	1%
Total	3,736	100%	10,113	100%	22,140	100%	26,197	100%

Note: Children receiving care from more than one type of provider are coded to just one type of provider using the following logic: exempt, if any exempt care provider is used; family home, if no exempt care provider is used and the child is cared for by a licensed family home provider; and center if a child is cared for by a center provider and not an exempt provider or a licensed family home provider.

Child Care

Number of Children Served in Homeless Child Care Program By State Fiscal Year

Source: Division of Child Care and Early Learning

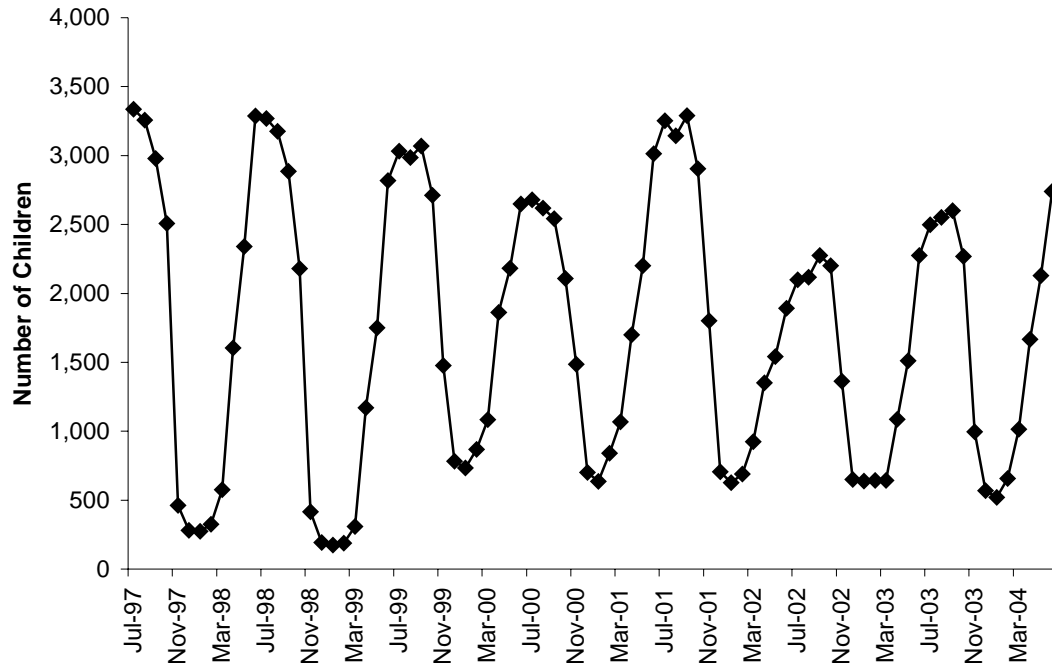


Note: Decreases in children served from SFY 2000 correspond to changes in child counting methodology and increased length of service episodes needed by chronically homeless families. The Homeless Child Care Program moved from Children's Administration to Economic Services Administration in July 2001. This program was redesigned to better meet family needs for SFY05.

Child Care

Number of Children Served in Seasonal Child Care Program by Month, SFY 1998 to SFY 2004

Source: SSPS Payment File



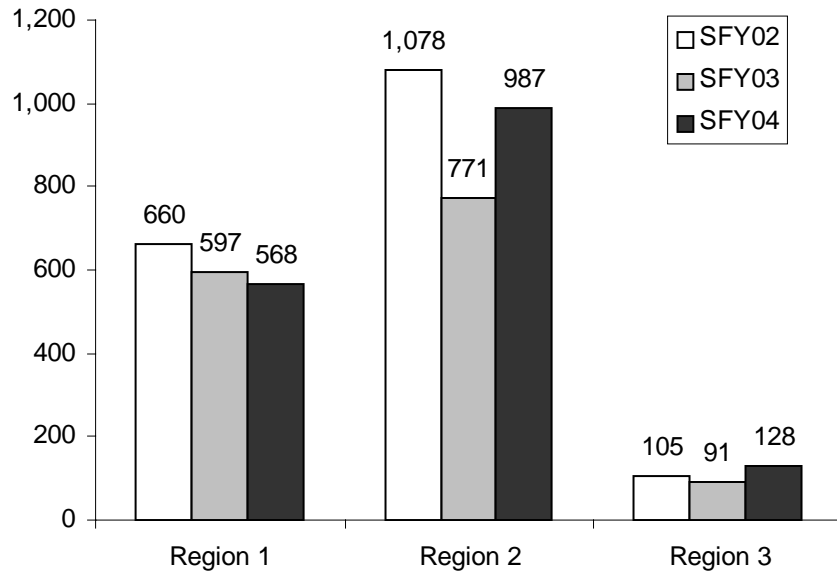
	SFY1998	SFY1999	SFY2000	SFY2001	SFY2002	SFY2003	SFY2004
July	3,337	3,268	3,033	2,680	3,252	2,098	2,497
August	3,258	3,175	2,985	2,619	3,144	2,117	2,551
September	2,978	2,885	3,069	2,543	3,289	2,275	2,600
October	2,508	2,179	2,712	2,108	2,904	2,200	2,269
November	462	416	1,476	1,486	1,802	1,363	996
December	280	192	782	700	706	650	568
January	275	175	733	636	627	639	519
February	325	187	869	841	689	642	657
March	576	309	1,084	1,069	924	644	1,015
April	1,604	1,171	1,863	1,699	1,350	1,086	1,667
May	2,340	1,751	2,182	2,200	1,542	1,511	2,129
June	3,288	2,819	2,650	3,014	1,893	2,275	2,739
Monthly Avg.	1,769	1,544	1,953	1,800	1,844	1,458	1,684

Note: The cyclical flux corresponds to seasonal crop growth and harvest. In FY'00 program use in the winter increased and has remained constant due to the availability of more year-round work (packing houses, pruning) and program changes. In July 2001 the Seasonal Child Care Program moved from Children's Administration to Economic Services Administration. Starting in FY02 families were referred to Working Connections Child Care if they met the eligibility rules for both the Seasonal and WCCC child care subsidy programs. Contractors also were monitored to stay within their budgeted funds for the fiscal year, leading some contractors to limit services.

Child Care

Average Number of Children Served per Month in Seasonal Child Care Program by DSHS Region SFY 2002 – SFY 2004

Source: SSPS Payment File



Note: The distribution of children served by DSHS Region in the Seasonal Child Care Program corresponds to the breadth and length of agricultural work and the amount of funds allocated to the Region. The Seasonal Child Care Program moved from Children's Administration to Economic Services Administration in July 2001.