

Disability Lifeline Program

	PAGE
Disability Lifeline (DL) Program Highlights.....	1
Selected Combined DL Program Characteristics, SFY 2010 and SFY 2011.....	2
Combined DL Caseload, SFY 2002 through SFY 2011.....	3
Selected Disability Lifeline – Unemployable (DL-U) Program Characteristics, SFY 2010 and SFY 2011.....	4
DL-U Caseload, SFY 2002 through SFY 2011.....	5
Selected Disability Lifeline – Expedited Medicaid (DL-X) Program Characteristics, SFY 2010 and SFY 2011.....	6
DL-X Caseload, SFY 2002 through SFY 2011.....	7
Selected Disability Lifeline – Other Types Program Characteristics, SFY 2010 and SFY 2011.....	8
DL-Other Types Caseload, SFY 2002 through SFY 2011.....	9
Combined DL Caseload by Program Type, SFY 2011.....	10
DL-U Caseload Exiting to DL-X or Some Other Program, SFY 2011.....	11
DL-X Caseload Exiting to SSI or Some Other Program, SFY 2011.....	11
Combined DL Caseload by DSHS Region, CSO, and HCS Office, June 2011.....	12
Combined DL Caseload by County of Residence, June 2011.....	15
DL Program Client Demographics, June 2011.....	16

Disability Lifeline Program

Disability Lifeline (formerly General Assistance)

Disability Lifeline (DL) provides cash assistance to adults who cannot work and do not have dependent children. There are three DL groups:

1. **DL-Unemployable (DL-U)** is designed for persons who meet financial requirements and have a physical or mental incapacity that prevents employment for at least three (3) months.
2. **DL-Expedited Medicaid (DL-X)** provides full scope categorically needy (CN) medical benefits to those who appear to meet SSI disability criteria.
3. **DL-Other Types** include Aged (DL-A), Blind (DL-B), and Disabled (DL-D) which offers state-funded or full scope CN medical benefits to persons who are 65 or older or disabled, institutionalized (DL-I), and under age 19 (DL-R).

Highlights:

- The average monthly combined DL caseload decreased 1.1% to 37,856 cases in SFY 2011 from 38,269 cases in SFY 2010. The average monthly caseload for:
 1. DL-U increased slightly to 20,606 in SFY 2011 from 20,501 in SFY 2010;
 2. DL-X decreased 8.2% in SFY 2011 (12,296 cases), from SFY 2010 (13,390 cases)
 3. DL-Other programs increased 13.2% in SFY 2011 (4,954 cases), from SFY 2010 (4,378 cases)
- In June 2011, most DL-U recipients were male (61.3%), and most recipients were white (64.8%). The median age for DL-U only recipients was 42 years.
- In June 2011, most DL-X recipients were male (57.6%), and most recipients were white (68.1%). The median age for DL-X only recipients was 44 years.
- In June 2011, most DL-Other Types recipients were female (61.1%). The majority of recipients were either Asian/Pacific Islanders (30.2%) or White (28.3%). The median age for DL-Other recipients was 69 years.

Disability Lifeline Program

Selected Combined Disability Lifeline Program¹ Characteristics SFY 2010 and SFY 2011

Source: ESA-ACES Data

	SFY 2010 (July 2009 – June 2010)	SFY 2011 (July 2010 – June 2011)
Average Number of Cases Per Month (Range)	38,269 (37,287- 39,359)	37,856 (34,951- 39,564)
Average Number of Persons Per Month (Range)	38,738 (37,762 – 39,842)	38,378 (35,484 – 40,092)
Recipients as a Percent of State's Population Age 18 and Over	0.7%	0.7%
State Population Age 18 and Over ²	5,149,729	5,193,198
Average Persons Per Case	1.0	1.0
Average Monthly Payment Per Case (Range) ³	\$307.72 (\$306.37 - \$309.40)	\$263.48 (\$180.24 - \$311.88)

¹ The combined DL caseload includes Disability Lifeline for Unemployable (DL-U), Aged (DL-A), Blind (DL-B), Disabled (DL-D), Expedited Medicaid (DL-X), Regular (DL-R) and Residing in an Institution for the Mentally Diseased (DL-I and DL-K).

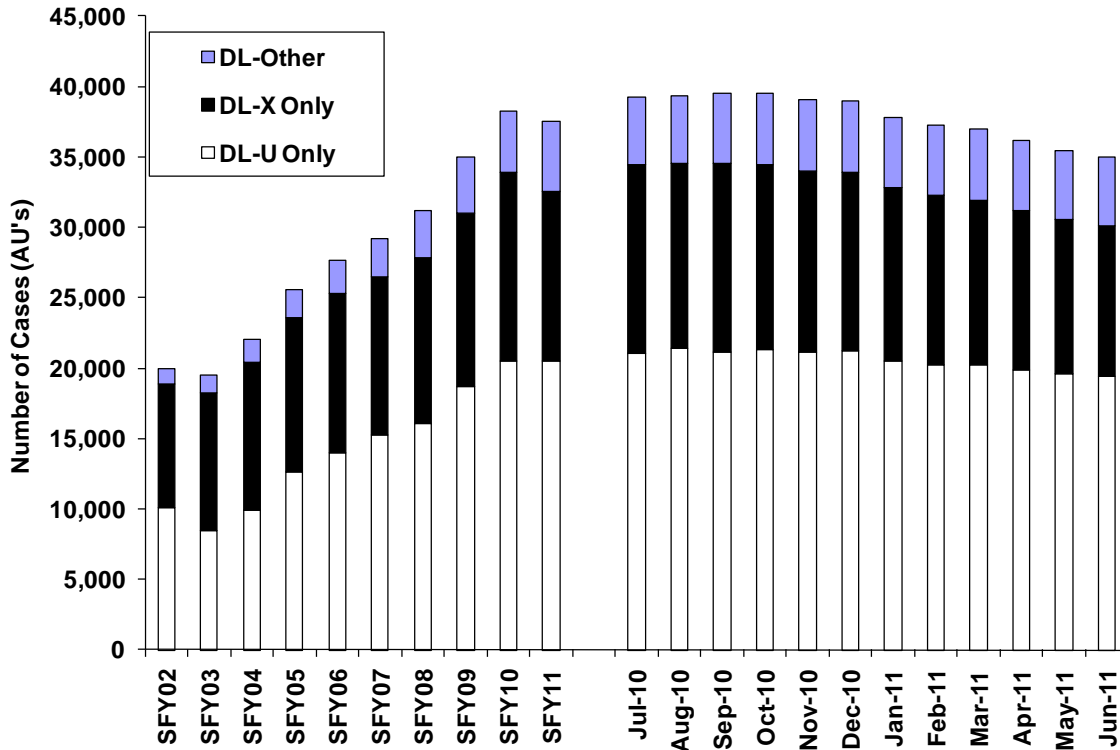
² OFM, 2011 Population Trends for Washington State

³ Payments not adjusted for refunds.

Disability Lifeline Program

Combined Disability Lifeline Caseload SFY 2002 - SFY 2011

Source: ESA-ACES Data



Year	Cases	Year	Cases
SFY02	19,921	SFY07	29,220
SFY03	19,472	SFY08	31,172
SFY04	22,012	SFY09	34,992
SFY05	25,566	SFY10	38,269
SFY06	27,664	SFY11	37,856

SFY 2011	Cases	Persons	Grant Expenditures	Payment Per Case
July	39,216	39,720	\$12,062,587.78	\$307.59
August	39,359	39,875	\$12,144,467.09	\$308.56
September	39,499	40,018	\$12,186,790.88	\$308.53
October	39,564	40,092	\$12,252,760.88	\$309.69
November	39,100	39,620	\$12,194,683.84	\$311.88
December	38,977	39,500	\$12,150,025.77	\$311.72
January	37,775	38,293	\$9,259,617.73	\$245.13
February	37,261	37,784	\$9,162,256.44	\$245.89
March	36,996	37,522	\$9,029,954.77	\$244.08
April	36,164	36,686	\$6,538,905.33	\$180.81
May	35,414	35,940	\$6,413,238.20	\$181.09
June	34,951	35,484	\$6,299,475.83	\$180.24
Mo. Avg.	37,856	38,378	\$9,974,563.71	\$263.48

Disability Lifeline Program

Selected Disability Lifeline – Unemployable (DL-U) Program Characteristics SFY 2010 and SFY 2011

Source: ESA-ACES Data

	SFY 2010 (July 2009 – June 2010)	SFY 2011 (July 2010 – June 2011)
Average Number of Cases Per Month (Range)	20,501 (19,552 – 21,437)	20,606 (19,457 – 21,386)
Average Number of Persons Per Month (Range)	20,545 (19,595 – 21,487)	20,645 (19,496 – 21,430)
Recipients as a Percent of State's Population Age 18 and Over	0.4%	0.4%
State Population Age 18 and Over ¹	5,149,729	5,193,198
Average Persons Per Case	1.0	1.0
Average Monthly Payment Per Case (Range) ²	\$300.53 (\$298.13 – \$303.30)	\$258.01 (\$176.68 – \$306.71)

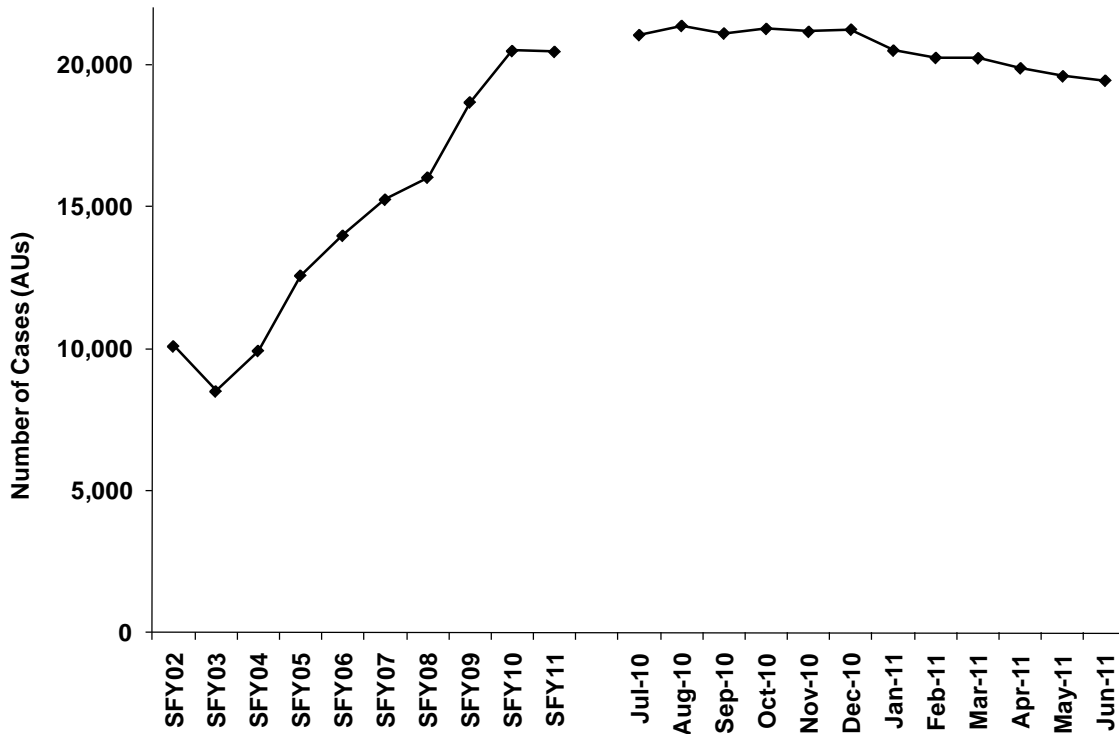
¹ OFM, 2011 Population Trends for Washington State

² Payments not adjusted for refunds.

Disability Lifeline Program

DL-U Only Caseload SFY 2002 - SFY 2011

Source: ESA-ACES Data



SFY 2011	Cases	Persons	Grant Expenditures	Payment Per Case
July	21,063	21,104	\$6,320,704.03	\$300.09
August	21,386	21,430	\$6,455,649.67	\$301.86
September	21,119	21,161	\$6,379,664.94	\$302.08
October	21,282	21,323	\$6,449,316.77	\$303.04
November	21,179	21,221	\$6,495,822.13	\$306.71
December	21,256	21,299	\$6,517,799.81	\$306.63
January	20,518	20,559	\$4,950,935.03	\$241.30
February	20,259	20,300	\$4,913,180.84	\$242.52
March	20,247	20,287	\$4,855,636.03	\$239.82
April	19,894	19,926	\$3,533,809.05	\$177.63
May	19,611	19,638	\$3,487,474.58	\$177.83
June	19,457	19,496	\$3,437,646.31	\$176.68
Mo. Avg.	20,606	20,645	\$5,316,469.93	\$258.01

Disability Lifeline Program

Selected Disability Lifeline – Expedited Medicaid (DL-X) Program Characteristics SFY 2010 and SFY 2011

Source: ESA-ACES Data

	SFY 2010 (July 2009 – June 2010)	SFY 2011 (July 2010 – June 2011)
Average Number of Cases Per Month (Range)	13,390 (13,110 – 13,594)	12,296 (10,645 – 13,422)
Average Number of Persons Per Month (Range)	13,398 (13,118 – 13,604)	12,301 (10,652 – 13,426)
Recipients as a Percent of State's Population Age 18 and Over	0.2%	0.2%
State Population Age 18 and Over ¹	5,149,729	5,193,198
Average Persons Per Case	1.0	1.0
Average Monthly Payment Per Case (Range) ²	\$321.33 (\$320.39 - \$321.99)	\$276.06 (\$187.75 - \$323.70)

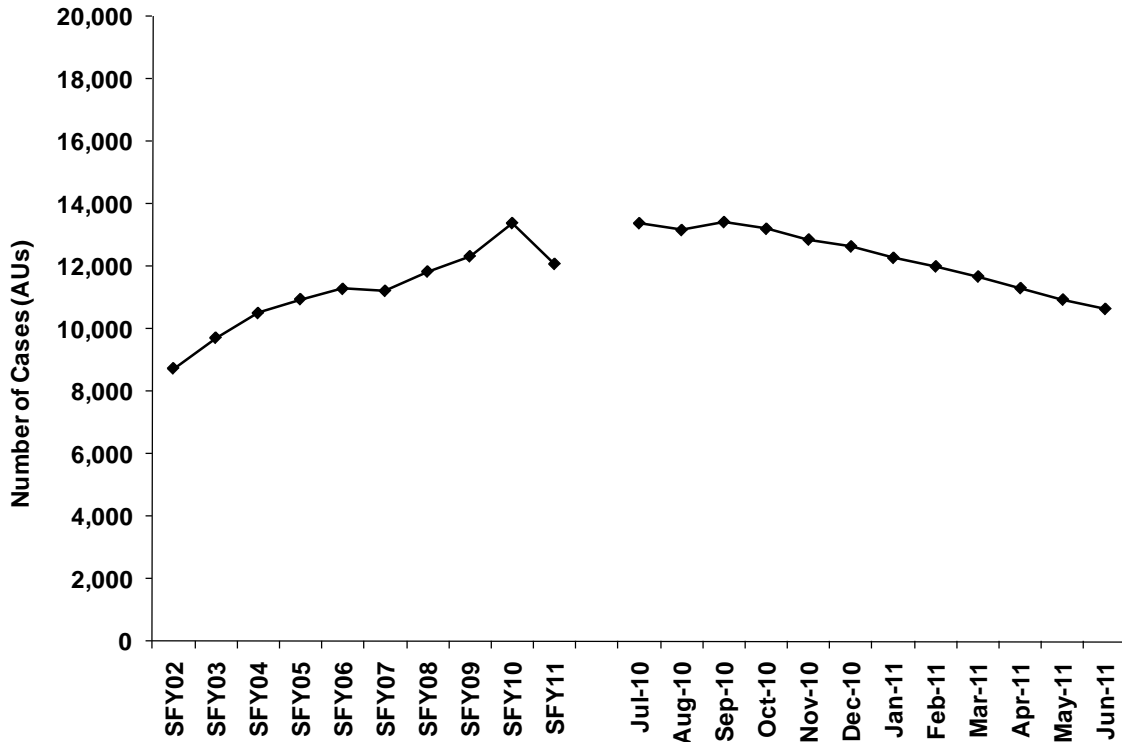
¹ OFM, 2011 Population Trends for Washington State

² Payments are not adjusted for refunds.

Disability Lifeline Program

DL-X Only Caseload SFY 2002 - SFY 2011

Source: ESA-ACES Data



Year	Cases	Year	Cases
SFY02	8,746	SFY07	11,224
SFY03	9,724	SFY08	11,842
SFY04	10,514	SFY09	12,329
SFY05	10,958	SFY10	13,390
SFY06	11,286	SFY11	12,296

SFY 2011	Cases	Persons	Grant Expenditures	Payment Per Case
July	13,386	13,390	\$4,318,751.01	\$322.63
August	13,167	13,171	\$4,246,658.61	\$322.52
September	13,422	13,426	\$4,325,027.32	\$322.23
October	13,208	13,212	\$4,270,584.44	\$323.33
November	12,864	12,868	\$4,164,126.34	\$323.70
December	12,643	12,648	\$4,087,849.23	\$323.33
January	12,279	12,283	\$3,119,461.36	\$254.05
February	12,005	12,008	\$3,054,522.61	\$254.44
March	11,681	11,685	\$2,966,403.17	\$253.95
April	11,310	11,319	\$2,123,475.23	\$187.75
May	10,943	10,950	\$2,057,253.88	\$188.00
June	10,645	10,652	\$1,998,688.40	\$187.76
Mo. Avg.	12,296	12,301	\$3,394,400.13	\$276.06

Disability Lifeline Program

Selected Disability Lifeline – Other Types Program Characteristics SFY 2010 and SFY 2011

Source: ESA-ACES Data

	SFY 2010 (July 2009 – June 2010)	SFY 2011 (July 2010 – June 2011)
Average Number of Cases Per Month (Range)	4,378 (4,176 – 4,654)	4,954 (4,767 – 5,078)
Average Number of Persons Per Month (Range)	4,797 (4,585 – 5,105)	5,434 (5,229 – 5,558)
Recipients as a Percent of State's Population Age 18 and Over	Trace	Trace
State Population Age 18 and Over ¹	5,149,729	5,193,198
Average Persons Per Case	1.1	1.1
Average Monthly Payment Per Case (Range) ²	\$299.75 (\$297.33 - \$301.82)	\$255.07 (\$177.75 - \$304.13)

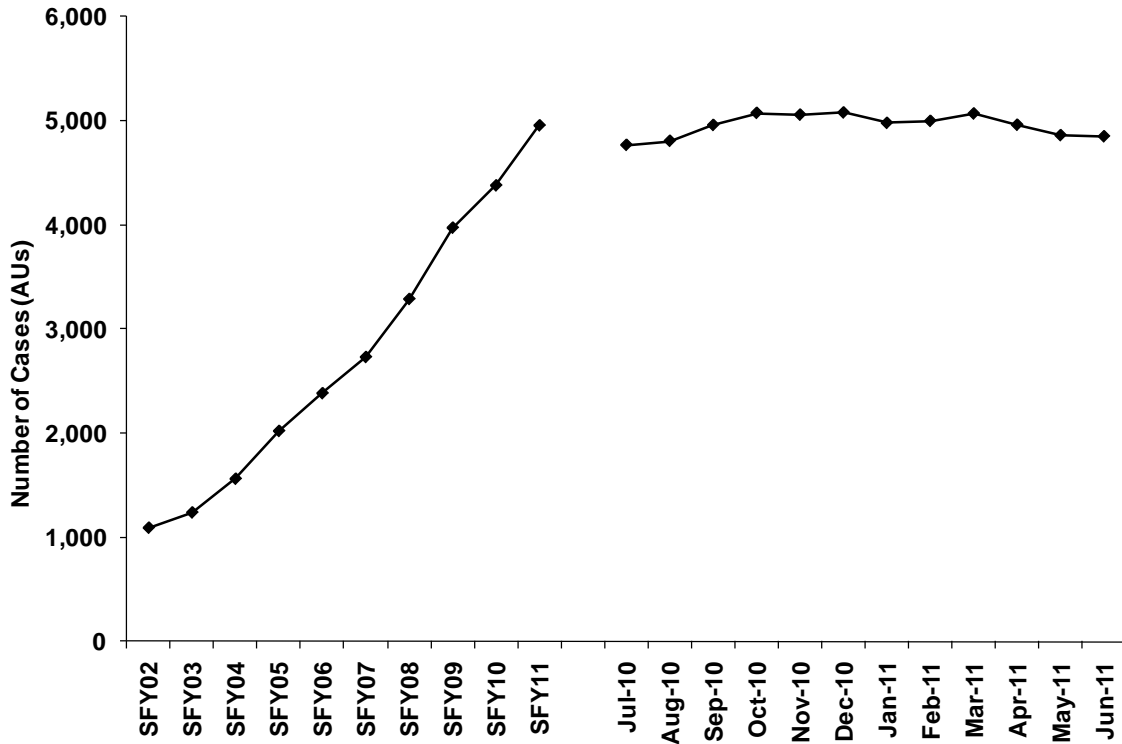
¹ OFM, 2011 Population Trends for Washington State

² Payments not adjusted for refunds.

Disability Lifeline Program

DL-Other Types Caseload SFY 2002 - SFY 2011

Source: ESA-ACES Data



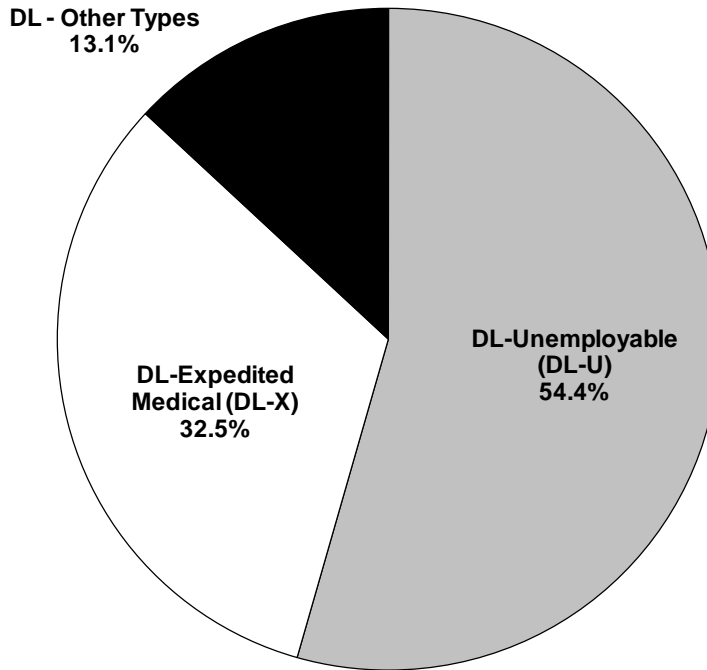
Year	Cases	Year	Cases
SFY02	1,092	SFY07	2,731
SFY03	1,239	SFY08	3,288
SFY04	1,562	SFY09	3,972
SFY05	2,021	SFY10	4,378
SFY06	2,383	SFY11	4,954

SFY 2011	Cases	Persons	Grant Expenditures	Payment Per Case
July	4,767	5,229	\$1,423,132.74	\$298.54
August	4,806	5,275	\$1,442,158.81	\$300.07
September	4,958	5,437	\$1,482,098.62	\$298.93
October	5,074	5,558	\$1,532,859.67	\$302.10
November	5,057	5,532	\$1,534,735.37	\$303.49
December	5,078	5,557	\$1,544,376.73	\$304.13
January	4,978	5,451	\$1,189,221.34	\$238.90
February	4,997	5,479	\$1,194,552.99	\$239.05
March	5,068	5,552	\$1,207,915.57	\$238.34
April	4,960	5,445	\$881,621.05	\$177.75
May	4,860	5,352	\$868,509.74	\$178.71
June	4,849	5,336	\$863,141.12	\$178.00
Mo. Avg.	4,954	5,434	\$1,263,693.65	\$255.07

Disability Lifeline Program

Combined Disability Lifeline Caseload by Program Type SFY 2011

Source: ESA-ACES Data



SFY 2011	Combined DL Caseload	DL-U Only		DL-X Only		DL-Other Types	
		Number	Percent	Number	Percent	Number	Percent
July	39,216	21,063	53.7%	13,386	34.1%	4,767	12.2%
August	39,359	21,386	54.3%	13,167	33.5%	4,806	12.2%
September	39,499	21,119	53.5%	13,422	34.0%	4,958	12.6%
October	39,564	21,282	53.8%	13,208	33.4%	5,074	12.8%
November	39,100	21,179	54.2%	12,864	32.9%	5,057	12.9%
December	38,977	21,256	54.5%	12,643	32.4%	5,078	13.0%
January	37,775	20,518	54.3%	12,279	32.5%	4,978	13.2%
February	37,261	20,259	54.4%	12,005	32.2%	4,997	13.4%
March	36,996	20,247	54.7%	11,681	31.6%	5,068	13.7%
April	36,164	19,894	55.0%	11,310	31.3%	4,960	13.7%
May	35,414	19,611	55.4%	10,943	30.9%	4,860	13.7%
June	34,951	19,457	55.7%	10,645	30.5%	4,849	13.9%
Mo. Avg.	37,856	20,606	54.4%	12,296	32.5%	4,954	13.1%

Disability Lifeline Program

DL-U Caseload Exiting to DL-X or Some Other Program SFY 2011

Source: ESA-ACES Data

During Subsequent Month Being Reported

SFY 2011	Total DL-U Adults ¹	Adults Remaining On DL-U		Adults Moving From DL-U to DL-X		Adults Moving From DL-U to Other Programs ² or Exiting	
		Number	Percent	Number	Percent	Number	Percent
July	21,104	18,798	89.1%	747	3.5%	1,366	6.5%
August	21,430	18,631	86.9%	1,087	5.1%	1,477	6.9%
September	21,161	18,724	88.5%	766	3.6%	1,483	7.0%
October	21,323	18,924	88.7%	673	3.2%	1,521	7.1%
November	21,221	19,063	89.8%	568	2.7%	1,418	6.7%
December	21,299	18,533	87.0%	634	3.0%	1,914	9.0%
January	20,559	18,181	88.4%	569	2.8%	1,630	7.9%
February	20,300	17,766	87.5%	572	2.8%	1,709	8.4%
March	20,287	17,650	87.0%	678	3.3%	1,752	8.6%
April	19,926	17,461	87.6%	602	3.0%	1,604	8.0%
May	19,638	17,076	87.0%	689	3.5%	1,627	8.3%
June	19,496	17,103	87.7%	536	2.7%	1,610	8.3%
Mo. Avg.	20,645	18,159	88.0%	677	3.3%	1,593	7.7%

DL-X Caseload Exiting to SSI or Some Other Program SFY 2011

Source: ESA-ACES Data

During Subsequent Month Being Reported

SFY 2011	Total DL-X Adults	Adults Remaining On DL-X		Adults Moving From DL-X to SSI		Adults Moving From DL-X to Other Programs or Exiting	
		Number	Percent	Number	Percent	Number	Percent
July	13,390	12,188	91.0%	651	4.9%	551	4.1%
August	13,171	12,048	91.5%	591	4.5%	532	4.0%
September	13,426	12,215	91.0%	647	4.8%	564	4.2%
October	13,212	11,977	90.7%	637	4.8%	598	4.5%
November	12,868	11,835	92.0%	501	3.9%	532	4.1%
December	12,648	11,449	90.5%	503	4.0%	696	5.5%
January	12,283	11,239	91.5%	510	4.2%	534	4.3%
February	12,008	10,844	90.3%	538	4.5%	626	5.2%
March	11,685	10,415	89.1%	549	4.7%	721	6.2%
April	11,319	10,129	89.5%	557	4.9%	633	5.6%
May	10,950	9,756	89.1%	528	4.8%	666	6.1%
June	10,652	9,477	89.0%	525	4.9%	650	6.1%
Mo. Avg.	12,301	11,131	90.5%	561	4.6%	609	4.9%

¹ Left of the vertical line are clients who received DL-U or DL-X during the month being reported. Anything to the right of the vertical line, the client received during the subsequent month.

² Other programs include SSI, TANF, Diversion Cash Assistance, Refugee Cash Assistance, and Alcohol/Drug Treatment.

Disability Lifeline Program

Combined DL Caseload by DSHS Region, CSO, and HCS Office June 2011

Source: ESA-ACES Data

	Cases		Clients	
	Number	Percent	Number	Percent
Region 1				
Access Spokane 032	2,932	8.4%	2,953	8.3%
Clarkston CSO	87	0.2%	88	0.2%
Colfax CSO	44	0.1%	45	0.1%
Colville CSO	293	0.8%	294	0.8%
Ellensburg CSO	135	0.4%	135	0.4%
Goldendale CSO	86	0.2%	86	0.2%
Kennewick CSO	1,050	3.0%	1,078	3.0%
Mattawa CSO	1	0.0%	1	0.0%
Moses Lake CSO	476	1.4%	483	1.4%
Newport CSO	125	0.4%	125	0.4%
Okanogan CSO	255	0.7%	255	0.7%
Othello CSO	28	0.1%	28	0.1%
R2 Processing Center	5	0.0%	5	0.0%
Republic CSO	104	0.3%	104	0.3%
Sunnyside CSO	198	0.6%	203	0.6%
Walla Walla CSO	230	0.7%	233	0.7%
Wapato CSO	154	0.4%	159	0.4%
Wenatchee CSO	525	1.5%	533	1.5%
White Salmon CSO	59	0.2%	59	0.2%
Yakima CSO	934	2.7%	942	2.7%
Region Total	7,721	22.1%	7,809	22.0%
Region 2				
Alderwood CSO	1,025	2.9%	1,053	3.0%
Auburn CSO	88	0.3%	88	0.2%
Bellingham CSO	1,149	3.3%	1,159	3.3%
Belltown CSO	2,033	5.8%	2,042	5.8%
Capitol Hill CSO	787	2.3%	813	2.3%
Everett CSO	1,275	3.6%	1,291	3.6%
Federal Way CSO	1,034	3.0%	1,059	3.0%
King Eastside CSO	1,122	3.2%	1,196	3.4%
King North CSO	1,455	4.2%	1,486	4.2%
King South CSO	1,046	3.0%	1,063	3.0%
Mt Vernon CSO	610	1.7%	617	1.7%
Oak Harbor CSO	130	0.4%	132	0.4%
Rainier CSO	853	2.4%	866	2.4%
Renton CSO	1,096	3.1%	1,124	3.2%
Sky Valley CSO	370	1.1%	376	1.1%
Smokey Point CSO	992	2.8%	999	2.8%
White Center CSO	1,305	3.7%	1,327	3.7%
Region Total	16,370	46.8%	16,691	47.0%

Disability Lifeline Program

Combined DL Caseload by DSHS Region, CSO, and HCS Office (continued) June 2011

Source: ESA-ACES Data

	Cases		Clients	
	Number	Percent	Number	Percent
Region 3				
Aberdeen CSO	537	1.5%	538	1.5%
Bremerton CSO	1,229	3.5%	1,229	3.5%
Chehalis CSO	569	1.6%	572	1.6%
Columbia River CSO	920	2.6%	930	2.6%
Forks CSO	50	0.1%	51	0.1%
Friday Harbor Outstation	0	0.0%	0	0.0%
Kelso CSO	507	1.5%	508	1.4%
Lakewood CSO	908	2.6%	916	2.6%
Long Beach CSO	122	0.3%	122	0.3%
Olympia CSO	1,257	3.6%	1,267	3.6%
Pierce North CSO	1,107	3.2%	1,115	3.1%
Pierce South CSO	820	2.3%	829	2.3%
Port Angeles CSO	260	0.7%	263	0.7%
Port Townsend CSO	140	0.4%	141	0.4%
Puyallup Valley CSO	1,042	3.0%	1,051	3.0%
Shelton CSO	337	1.0%	338	1.0%
South Bend CSO	59	0.2%	60	0.2%
Stevenson CSO	73	0.2%	73	0.2%
Region Total	9,937	28.4%	10,003	28.2%
Customer Service Center	34	0.1%	35	0.1%
WASHCAP	8	0.0%	8	0.0%

Disability Lifeline Program

Combined DL Caseload by DSHS Region, CSO, and HCS Office¹ (continued) June 2011

Source: ESA-ACES Data

	Cases		Clients	
	Number	Percent	Number	Percent
HCS Region 1				
Clarkston HCS Office	1	0.0%	1	0.0%
Colville HCS Office	1	0.0%	1	0.0%
Ellensburg HCS	1	0.0%	1	0.0%
Moses Lake HCS Office	22	0.1%	24	0.1%
Okanogan HCS Office	2	0.0%	2	0.0%
Spokane HCS Office	104	0.3%	117	0.3%
Sunnyside HCS Office	10	0.0%	12	0.0%
Tri-Cities HCS Office	39	0.1%	41	0.1%
Walla Walla HCS Office	5	0.0%	6	0.0%
Wapato HCS	4	0.0%	4	0.0%
Wenatchee HCS Office	23	0.1%	24	0.1%
Yakima HCS Office	21	0.1%	22	0.1%
Region Total	233	0.7%	255	0.7%
HCS Region 2				
Alderwood HCS Office	40	0.1%	41	0.1%
Bellingham HCS Office	18	0.1%	18	0.1%
Everett HCS Office	40	0.1%	42	0.1%
Holgate HCS Office	313	0.9%	337	0.9%
Mt Vernon HCS Office	11	0.0%	11	0.0%
Oak Harbor HCS	4	0.0%	4	0.0%
Skykomish HCS Office	10	0.0%	10	0.0%
Smokey Point HCS	15	0.0%	15	0.0%
Region Total	451	1.3%	478	1.3%
HCS Region 3				
Aberdeen HCS Office	5	0.0%	5	0.0%
Bremerton HCS Office	23	0.1%	24	0.1%
Chehalis HCS Office	8	0.0%	8	0.0%
Kelso HCS	7	0.0%	7	0.0%
Lacey HCS Office	23	0.1%	25	0.1%
Pacific County HCS	4	0.0%	4	0.0%
Port Angeles HCS	2	0.0%	2	0.0%
Puyallup HCS Office	0	0.0%	0	0.0%
Tacoma HCS Office	74	0.2%	77	0.2%
Vancouver HCS	51	0.1%	53	0.1%
Region Total	197	0.6%	205	0.6%
State Total	34,951	100.0%	35,484	100.0%

¹ A number of General Assistance cases received services through a Home Community Service Center (HCS) administered through the Aging and Adult Services Administration. These cases are listed separately since they are not part of an Economic Services Administration Community Services Division (CSD) Community Service Office (CSO).

Disability Lifeline Program

Combined DL Caseload by County of Residence June 2011

Source: ESA-ACES Data

	Cases		Clients	
	Number	Percent	Number	Percent
Adams	46	0.1%	47	0.1%
Asotin	85	0.2%	86	0.2%
Benton	765	2.2%	783	2.2%
Chelan	429	1.2%	433	1.2%
Clallam	313	0.9%	317	0.9%
Clark	968	2.8%	980	2.8%
Columbia	16	0.0%	16	0.0%
Cowlitz	500	1.4%	501	1.4%
Douglas	124	0.4%	127	0.4%
Ferry	77	0.2%	77	0.2%
Franklin	359	1.0%	372	1.0%
Garfield	1	0.0%	1	0.0%
Grant	482	1.4%	491	1.4%
Grays Harbor	558	1.6%	559	1.6%
Island	175	0.5%	178	0.5%
Jefferson	139	0.4%	140	0.4%
King	11,075	31.7%	11,346	32.0%
Kitsap	1,260	3.6%	1,261	3.6%
Kittitas	138	0.4%	138	0.4%
Klickitat	155	0.4%	155	0.4%
Lewis	560	1.6%	563	1.6%
Lincoln	25	0.1%	25	0.1%
Mason	340	1.0%	341	1.0%
Okanogan	243	0.7%	244	0.7%
Pacific	181	0.5%	182	0.5%
Pend Oreille	149	0.4%	150	0.4%
Pierce	3,969	11.4%	4,007	11.3%
San Juan	32	0.1%	33	0.1%
Skagit	570	1.6%	575	1.6%
Skamania	79	0.2%	79	0.2%
Snohomish	3,789	10.8%	3,848	10.8%
Spokane	2,958	8.5%	2,990	8.4%
Stevens	316	0.9%	317	0.9%
Thurston	1,293	3.7%	1,305	3.7%
Wahkiakum	15	0.0%	15	0.0%
Walla Walla	235	0.7%	239	0.7%
Whatcom	1,168	3.3%	1,178	3.3%
Whitman	54	0.2%	55	0.2%
Yakima	1,310	3.7%	1,330	3.7%
Statewide Total	34,951	100.0%	35,484	100.0%

Disability Lifeline Program

Disability Lifeline Program¹ Client Demographics June 2011

Source: ESA-ACES Data

Characteristic	DL-U Only		DL-X Only		DL-Other Types	
	Number	Percent	Number	Percent	Number	Percent
TOTAL	19,496	100.0%	10,652	100.0%	5,336	100.0%
Gender						
Female	7,542	38.7%	4,518	42.4%	3,261	61.1%
Male	11,954	61.3%	6,134	57.6%	2,075	38.9%
Race						
White	12,633	64.8%	7,249	68.1%	1,511	28.3%
Hispanic	1,345	6.9%	628	5.9%	822	15.4%
Black	2,293	11.8%	1,248	11.7%	324	6.1%
Asian/Pacific Islander	612	3.1%	239	2.2%	1,611	30.2%
Native American	681	3.5%	390	3.7%	64	1.2%
Unknown	1,932	9.9%	898	8.4%	1,004	18.8%
Marital Status (Adults Only)						
Separated	2,048	10.5%	1,058	9.9%	390	7.3%
Married	910	4.7%	320	3.0%	1568	29.4%
Never Married	11,221	57.6%	5,937	55.7%	1,230	23.1%
Divorced	4,786	24.5%	3,079	28.9%	628	11.8%
Widowed	394	2.0%	192	1.8%	1414	26.5%
Unknown	137	0.7%	66	0.6%	106	2.0%
Citizenship						
U.S. Citizen	18,359	94.2%	10,395	97.6%	1,581	29.6%
Resident Alien	1,129	5.8%	253	2.4%	3,746	70.2%
U.S. National	8	0.0%	4	0.0%	9	0.2%
Immigrant Status						
Born in U.S.	18,182	93.3%	10,283	96.5%	1,464	27.4%
Amerasian	11	0.1%	3	0.0%	13	0.2%
Asylee	33	0.2%	7	0.1%	24	0.4%
Cuban/Haitian Entrant	13	0.1%	9	0.1%	2	0.0%
Deportation Withheld	4	0.0%	1	0.0%	7	0.1%
Non-Refugee	917	4.7%	235	2.2%	3,521	66.0%
Refugee	335	1.7%	113	1.1%	288	5.4%
Special Immigrant	1	0.0%	1	0.0%	17	0.3%
Age						
18 Years Old	0	0.0%	22	0.2%	81	1.5%
19 – 20 Years Old	669	3.4%	243	2.3%	45	0.8%
21 – 29 Years Old	3,759	19.3%	1,752	16.4%	174	3.3%
30 – 39 Years Old	3,931	20.2%	2,088	19.6%	218	4.1%
40 – 49 Years Old	6,054	31.1%	3,503	32.9%	425	8.0%
50 – 55 Years Old	3,274	16.8%	2,086	19.6%	431	8.1%
56 – 59 Years Old	1,169	6.0%	651	6.1%	207	3.9%
60 – 64 Years Old	638	3.3%	307	2.9%	188	3.5%
65+ Years Old	2	0.0%	0	0.0%	3,567	66.8%
Mean Age of Adults	40.6 Years Old		41.7 Years Old		64.4 Years Old	
Median Age of Adults	42.0 Years Old		44.0 Years Old		69.0 Years Old	

Disability Lifeline Program

Disability Lifeline Program Client Demographics (continued) June 2011

Source: ESA-ACES Data

Characteristic	DL-U Only		DL-X Only		DL-Other Types	
	Number	Percent	Number	Percent	Number	Percent
TOTAL	19,496	100.0%	10,652	100.0%	5,336	100.0%
Incapacity²						
Emotional	10,701	54.9%	7,918	74.3%	416	7.8%
Mental Retardation	49	0.3%	61	0.6%	10	0.2%
Physical Impairment	8,216	42.1%	2,544	23.9%	912	17.1%
Other	530	2.7%	129	1.2%	3,998	74.9%
Avg. Months on Assistance since July 1997³	16.2 Months		31.2 Months		31.2 Months	

¹ The Disability Lifeline caseload is broken into three groups:

- A. U Only includes Disability Lifeline for Unemployable only (DL-U)
- B. X Only includes Disability Lifeline for Expedited Medicaid only (DL-X)
- C. Other Types includes Disability Lifeline for Aged (DL-A), Blind (DL-B), Disabled (DL-D), Regular (DL-R), and Residing in an Institution for the Mentally Diseased (DL-I and DL-K)

² Incapacity types are as follows:

- A. Emotional – Mental Health Impairment
- B. Mental – Mental Retardation (clinical term)
- C. Physical – Physical Impairment
- D. Other – Aged, Blind, Disabled
- E. Unknown – Incapacity determined without a Progressive Evaluation Process

³ Length of stay reflects total cumulative months receiving Disability Lifeline as a program, including all types of Disability Lifeline. They need not be consecutive.