

Other Programs

PAGE

Other Programs Highlights	1
Selected Additional Requirements Emergent Needs (AREN) Program Characteristics, SFY 2010 and SFY 2011.....	2
AREN Caseload, SFY 2002 through SFY 2011.....	3
AREN Caseload as a Percent of the TANF Caseload SFY 2002 through SFY 2011.....	4
Average Monthly AREN Caseload by Service Type, SFY 2011	5
AREN Caseload by DSHS Region and CSO, June 2011	6
AREN Caseload by County of Residence, June 2011	8
AREN Client Demographics, June 2011	9
Selected Consolidated Emergency Assistance (CEAP) Program Characteristics, SFY 2010 and SFY 2011.....	10
CEAP Caseload, SFY 2002 through SFY 2011.....	11
CEAP Caseload by DSHS Region and CSO, SFY 2011	12
CEAP Caseload by County of Residence, SFY 2011.....	14
CEAP Client Demographics, SFY 2011	15
Selected Diversion Cash Assistance (DCA) Program Characteristics SFY 2010 and SFY 2011	16
DCA Caseload, SFY 2002 through SFY 2011	17
DCA Caseload by DSHS Region and CSO, June 2011.....	18
DCA Caseload by County of Residence, June 2011	20
DCA Client Demographics, June 2011	21
Selected Ongoing Additional Requirements (OAR) Program Characteristics SFY 2010 and SFY 2011	22

Other Programs

OAR Caseload, SFY 2002 through SFY 2011	23
OAR Caseload by Service Type, SFY 2011	24
OAR Caseload by DSHS Region, CSO, and HCS Office, June 2011	25
OAR Caseload by County of Residence, June 2011	28
OAR Client Demographics, June 2011	29
OFR Total Collections, SFY2002 through SFY2011	30
OFR Total Collections by Category, SFY2011	31
Selected Refugee Cash Assistance (RCA) Program Characteristics SFY 2010 and SFY 2011	32
RCA Caseload, SFY 2002 through SFY 2011	33
RCA Caseload by Country of Origin, June 2011	34
RCA Caseload by DSHS Region and CSO, June 2011	35
RCA Caseload by County of Residence, June 2011	37
RCA Client Demographics, June 2011	38
Selected State Supplemental Payment (SSP) Program Characteristics SFY 2010 and SFY 2011	39
SSP Caseload, SFY 2003 through SFY 2011	40
SSP Caseload by DSHS Region, CSO, and HCS Office, June 2011	41
SSP Caseload by County of Residence, June 2011	44
SSP Client Demographics, June 2011	45
Washington Telephone Assistance Program (WTAP) Caseload SFY 1992 to SFY 2011	46
WTAP Caseload by County of Residence, SFY 2011	47

Other Programs

AREN

This section describes other programs not already discussed in other sections. It includes: Additional Requirements – Emergent Needs (AREN), Consolidated Emergency Assistance Program¹ (CEAP), Diversion Cash Assistance (DCA), Ongoing Additional Requirements (OAR), Office of Financial Recovery (OFR), Refugee Cash Assistance (RCA), State Supplemental Payment (SSP), and Washington Telephone Assistance Program (WTAP).

CEAP

DCA

OAR

OFR

RCA

SSP

WTAP

Highlights:

- The average monthly AREN caseload decreased to 707 cases in SFY 2011, compared to 1,050 cases in SFY 2010.
- The average monthly CEAP¹ caseload decreased to 27 cases in SFY 2011 compared to 38 cases in SFY 2010. A total of 324 cases received CEAP in SFY 2011.
- The average monthly DCA caseload decreased to 560 cases in SFY 2011, compared to 685 cases in SFY 2010.
- The average monthly OAR caseload decreased to 319 cases in SFY 2011, compared to 330 cases in SFY 2010.
- The total OFR collections increased from \$507.1 million in SFY2010 to \$523.0 million in SFY2011, a 3.1% increase.
- In SFY2011, nearly 80% of OFR collections came from three of the eleven programs: Medicaid drug rebate (36.6%), developmental disabilities (24.3%), and vander overpayments (17.3%).
- The average monthly RCA caseload decreased to 464 cases in SFY 2011, compared to 605 cases in SFY 2010.
- The average monthly SSP caseload increased to 33,237 cases in SFY 2011, compared to 32,526 cases in SFY 2010.
- The annual total of WTAP cases decreased to 121,295 cases in SFY 2011 from a total of 132,450 cases in SFY 2010.

¹ CEAP ran out of funds as of February 2011. A new WAC change allows the department to suspend the program when funds are exhausted. The suspension was lifted on July 1, 2011 for the start of the new fiscal year and will suspend again once funds become depleted.

Other Programs

Selected AREN Program Characteristics SFY 2010 and SFY 2011

Source: ESA-ACES Data

	SFY2010 (July 2009 – June 2010)	SFY 2011 (July 2010 – June 2011)
Average Number of Cases Per Month (Range)	1,050 (779 – 1,230)	707 (427 – 1,156)
Average Number of Persons Per Month (Range)	3,090 (2,1920 – 3,706)	2,044 (1,200 – 3,327)
Average Number of Adults Per Month (Range)	1,133 (821 – 1,354)	755 (446 – 1,250)
Average Number of Children Per Month (Range)	1,957 (1,371 – 2,252)	1,289 (754 – 2,077)
Recipients as a Percent of State's Total Population	Trace	Trace
Total Statewide Population¹	6,733,250	6,767,900
Children as a Percent of All Recipients	63.3%	63.1%
Average Persons Per Case	2.9	2.9
Average Children Per Case	1.9	1.8
Average Children Per Adult	1.7	1.7
Average Monthly Payment Per Case (Range)²	\$541.63 (\$523.05 – \$ 557.60)	\$503.05 (\$451.30 – \$ 555.53)

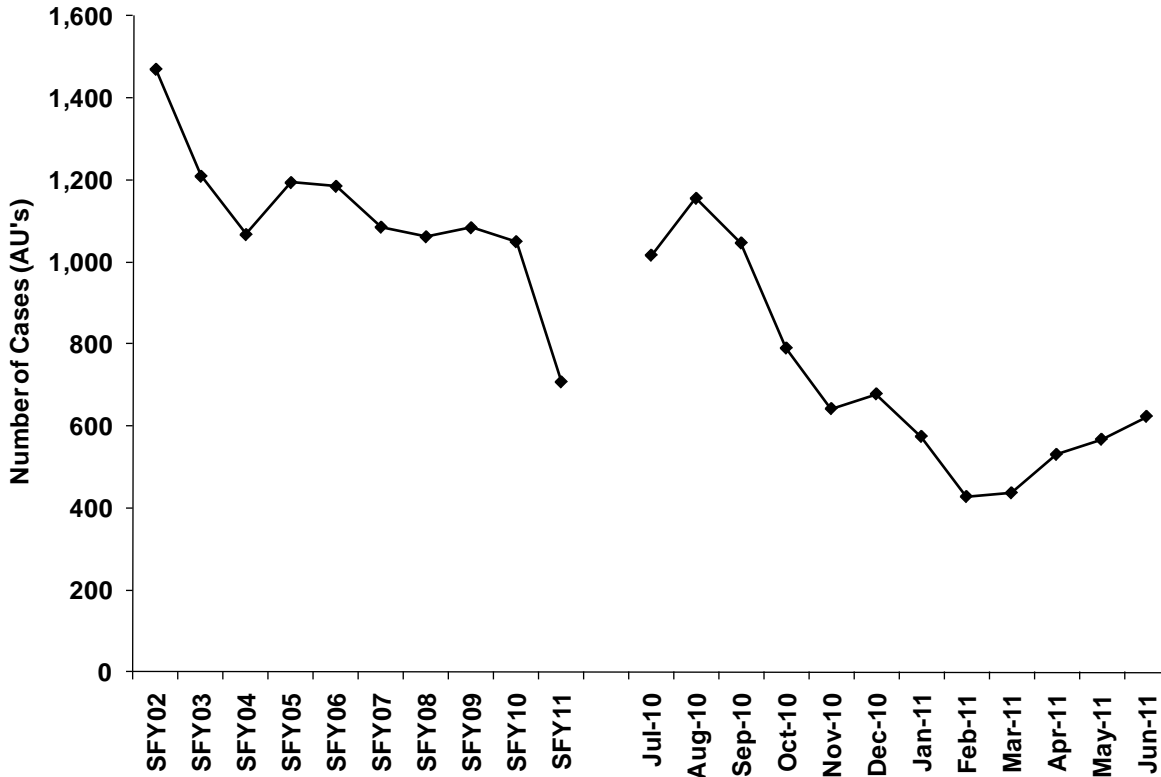
¹ OFM, 2011 Population Trends for Washington State

² Payments not adjusted for refunds.

Other Programs

AREN Caseload SFY 2002 - SFY 2011

Source: ESA-ACES Data

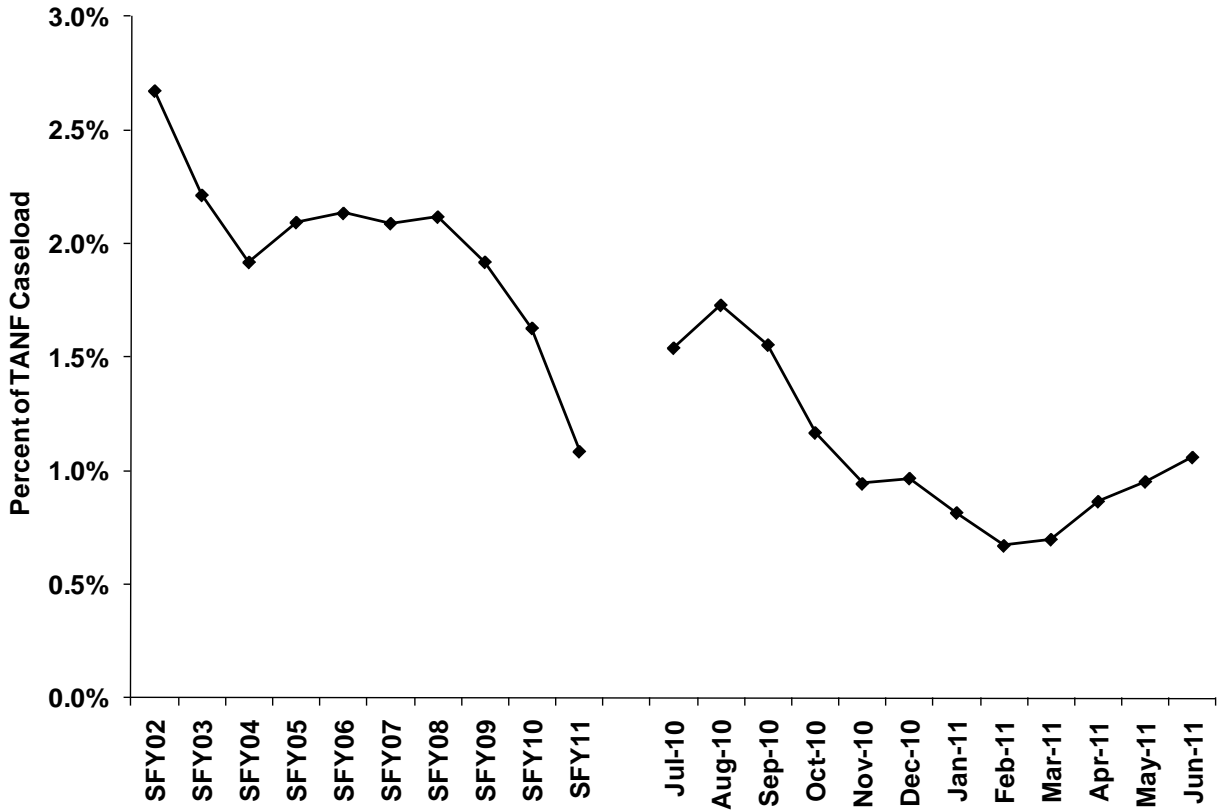


Year	Cases	Year	Cases
SFY02	1,472	SFY07	1,086
SFY03	1,210	SFY08	1,062
SFY04	1,067	SFY09	1,084
SFY05	1,194	SFY10	1,050
SFY06	1,185	SFY11	707

SFY 2011	Cases	Persons	Grant Expenditures	Average Payment Per Case
July	1,017	3,024	\$564,976	\$555.53
August	1,156	3,327	\$632,527	\$547.17
September	1,047	3,102	\$569,594	\$544.02
October	790	2,264	\$381,471	\$482.87
November	642	1,917	\$315,380	\$491.25
December	678	1,962	\$326,923	\$482.19
January	574	1,604	\$259,048	\$451.30
February	427	1,200	\$202,633	\$474.55
March	436	1,247	\$209,114	\$479.62
April	530	1,515	\$256,671	\$484.28
May	567	1,570	\$263,876	\$465.39
June	623	1,793	\$287,210	\$461.01
Mo. Avg.	707	2,044	355,785	\$503.05

Other Programs

AREN Caseload as a Percent of the TANF Caseload
SFY 2002 - SFY 2011
 Source: ESA-ACES Data

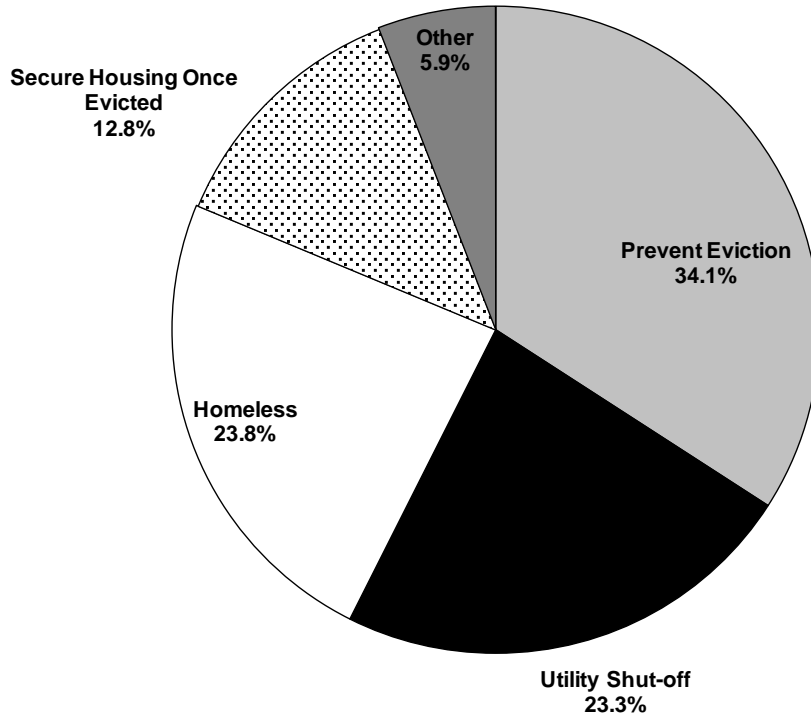


SFY 2011	TANF Caseload	AREN Caseload		Total AREN Expenditures
		Number	Percent	
July	65,966	1,017	1.5%	\$564,976
August	66,800	1,156	1.7%	\$632,527
September	67,309	1,047	1.6%	\$569,594
October	67,598	790	1.2%	\$381,471
November	67,984	642	0.9%	\$315,380
December	70,066	678	1.0%	\$326,923
January	70,318	574	0.8%	\$259,048
February	63,610	427	0.7%	\$202,633
March	62,410	436	0.7%	\$209,114
April	61,208	530	0.9%	\$256,671
May	59,490	567	1.0%	\$263,876
June	58,761	623	1.1%	\$287,210
Mo. Avg.	65,127	707	1.1%	\$355,785

Other Programs

Average Monthly AREN Caseload by Service Type¹ SFY 2011

Source: ESA-ACES Data



AREN Case Type	AREN Cases	
	Number	Percent
Prevent Eviction	249	34.1%
Utility Shut-off	170	23.3%
Homeless	174	23.8%
Secure Housing Once Evicted	94	12.8%
No Fuel For Heating or Cooking	13	1.8%
Obtain New Housing – Domestic Violence	11	1.5%
Obtain New Housing - Verifiable Defect	12	1.6%
Exception to Rule ²	7	0.9%
Housing Due to Natural Disaster	0	0.1%
Clothing Due to Natural Disaster	0	0.0%
No Food	0	0.0%
Utility Repair	0	0.0%
Total Cases	730	100.0%

¹ Numbers are based on the average monthly caseload by type. A number of cases received more than one type of AREN. Therefore, the sum of AREN cases by type was greater than the monthly average of unduplicated cases that received AREN.

² ETR (Exception to Rule), formerly ETP (Exception to Policy), is detailed in WAC 388-440-0001.

Other Programs

AREN Caseload by DSHS Region and CSO

June 2011

Source: ESA-ACES Data

	Cases		Clients	
	Number	Percent	Number	Percent
Region 1				
Access Spokane 032	75	12.0%	221	12.3%
Clarkston CSO	2	0.3%	6	0.3%
Colfax CSO	0	0.0%	0	0.0%
Colville CSO	4	0.6%	13	0.7%
Ellensburg CSO	7	1.1%	23	1.3%
Goldendale CSO	3	0.5%	11	0.6%
Kennewick CSO	8	1.3%	16	0.9%
Mattawa CSO	0	0.0%	0	0.0%
Moses Lake CSO	6	1.0%	17	0.9%
Newport CSO	0	0.0%	0	0.0%
Okanogan CSO	0	0.0%	0	0.0%
Othello CSO	1	0.2%	3	0.2%
R2 Processing Center	0	0.0%	0	0.0%
Republic CSO	1	0.2%	3	0.2%
Sunnyside CSO	15	2.4%	49	2.7%
Walla Walla CSO	0	0.0%	0	0.0%
Wapato CSO	2	0.3%	4	0.2%
Wenatchee CSO	4	0.6%	12	0.7%
White Salmon CSO	0	0.0%	0	0.0%
Yakima CSO	16	2.6%	48	2.7%
Region Total	144	23.1%	426	23.8%
Region 2				
Alderwood CSO	10	1.6%	33	1.8%
Auburn CSO	6	1.0%	14	0.8%
Bellingham CSO	9	1.4%	25	1.4%
Belltown CSO	14	2.2%	36	2.0%
Capitol Hill CSO	14	2.2%	46	2.6%
Everett CSO	24	3.9%	75	4.2%
Federal Way CSO	11	1.8%	29	1.6%
King Eastside CSO	14	2.2%	34	1.9%
King North CSO	15	2.4%	44	2.5%
King South CSO	9	1.4%	35	2.0%
Mt Vernon CSO	8	1.3%	21	1.2%
Oak Harbor CSO	2	0.3%	4	0.2%
Rainier CSO	12	1.9%	35	2.0%
Renton CSO	5	0.8%	13	0.7%
Sky Valley CSO	1	0.2%	2	0.1%
Smokey Point CSO	12	1.9%	29	1.6%
White Center CSO	26	4.2%	73	4.1%
Region Total	192	30.8%	548	30.6%

Other Programs

AREN Caseload by DSHS Region and CSO (continued)

June 2011

Source: ESA-ACES Data

	Cases		Clients	
	Number	Percent	Number	Percent
Region 3				
Aberdeen CSO	13	2.1%	29	1.6%
Bremerton CSO	7	1.1%	22	1.2%
Chehalis CSO	2	0.3%	7	0.4%
Columbia River CSO	55	8.8%	162	9.0%
Forks CSO	1	0.2%	1	0.1%
Friday Harbor Outstn	0	0.0%	0	0.0%
Kelso CSO	24	3.9%	66	3.7%
Lakewood CSO	68	10.9%	206	11.5%
Long Beach CSO	1	0.2%	3	0.2%
Olympia CSO	25	4.0%	60	3.3%
Pierce North CSO	23	3.7%	70	3.9%
Pierce South CSO	32	5.1%	98	5.5%
Port Angeles CSO	0	0.0%	0	0.0%
Port Townsend CSO	2	0.3%	3	0.2%
Puyallup Valley CSO	27	4.3%	76	4.2%
Shelton CSO	2	0.3%	6	0.3%
South Bend CSO	2	0.3%	3	0.2%
Stevenson CSO	3	0.5%	7	0.4%
Region Total	287	46.1%	819	45.7%
State Total	623	100.0%	1,793	100.00%

Other Programs

AREN Caseload by County of Residence June 2011

Source: ESA-ACES Data

County	Cases		Clients	
	Number	Percent	Number	Percent
Adams	2	0.3%	5	0.3%
Asotin	2	0.3%	6	0.3%
Benton	6	1.0%	14	0.8%
Chelan	4	0.6%	12	0.7%
Clallam	1	0.2%	1	0.1%
Clark	54	8.7%	159	8.9%
Columbia	0	0.0%	0	0.0%
Cowlitz	22	3.5%	60	3.3%
Douglas	0	0.0%	0	0.0%
Ferry	1	0.2%	3	0.2%
Franklin	2	0.3%	2	0.1%
Garfield	0	0.0%	0	0.0%
Grant	5	0.8%	15	0.8%
Grays Harbor	13	2.1%	29	1.6%
Island	2	0.3%	4	0.2%
Jefferson	2	0.3%	3	0.2%
King	128	20.5%	359	20.0%
Kitsap	8	1.3%	25	1.4%
Kittitas	7	1.1%	23	1.3%
Klickitat	3	0.5%	11	0.6%
Lewis	2	0.3%	5	0.3%
Lincoln	0	0.0%	0	0.0%
Mason	2	0.3%	6	0.3%
Okanogan	0	0.0%	0	0.0%
Pacific	3	0.5%	6	0.3%
Pend Oreille	0	0.0%	0	0.0%
Pierce	148	23.8%	446	24.9%
San Juan	0	0.0%	0	0.0%
Skagit	8	1.3%	21	1.2%
Skamania	4	0.6%	10	0.6%
Snohomish	49	7.9%	147	8.2%
Spokane	76	12.2%	225	12.5%
Stevens	3	0.5%	10	0.6%
Thurston	24	3.9%	61	3.4%
Wahkiakum	0	0.0%	0	0.0%
Walla Walla	0	0.0%	0	0.0%
Whatcom	9	1.4%	25	1.4%
Whitman	0	0.0%	0	0.0%
Yakima	33	5.3%	100	5.6%
State Total	623	100.0%	1,793	100.0%

Other Programs

AREN Client Demographics

June 2011

Source: ESA-ACES Data

Characteristic	All Clients		Adults Only	
	Number	Percent	Number	Percent
TOTAL	1,793	100.0%	639	100.0%
Gender				
Female	1,069	59.6%	487	76.2%
Male	724	40.4%	152	23.8%
Race				
White	779	43.4%	341	53.4%
Hispanic	217	12.1%	59	9.2%
Black	350	19.5%	134	21.0%
Asian/Pacific Islander	74	4.1%	25	3.9%
Native American	33	1.8%	16	2.5%
Unknown	340	19.0%	64	10.0%
Marital Status (Adults Only)				
Separated	71	4.0%	71	11.1%
Married	142	7.9%	140	21.9%
Never Married	1,510	84.2%	360	56.3%
Divorced	57	3.2%	56	8.8%
Widow	6	0.3%	6	0.9%
Unknown	7	0.4%	6	0.9%
Citizenship¹				
U.S. Citizen	1,667	93.0%	569	89.0%
Resident Alien	119	6.6%	67	10.5%
U.S. National	7	0.4%	3	0.5%
Age				
< 1 Year Old	117	6.5%	0	0.0%
1-5 Years Old	466	26.0%	0	0.0%
6-10 Years Old	291	16.2%	0	0.0%
11-15 Years Old	179	10.0%	0	0.0%
16-17 Years Old	83	4.6%	0	0.0%
18-20 Years Old	62	3.5%	44	6.9%
21-29 Years Old	263	14.7%	263	41.2%
30-39 Years Old	207	11.5%	207	32.4%
40-49 Years Old	104	5.8%	104	16.3%
50-55 Years Old	20	1.1%	20	3.1%
56-59 Years Old	1	0.1%	1	0.2%
Mean Age of Children	6.6 Years Old			
Median Age of Children	5.0 Years Old			
Mean Age of Adults	31 Years Old			
Median Age of Adults	30 Years Old			

¹ See Refugee/Immigrant section, page 24 for glossary of Citizenship terms.

Other Programs

Selected CEAP¹ Program Characteristics SFY 2010 and SFY 2011

Source: ESA-ACES Data

	SFY 2010 (July 2009 – June 2010)	SFY 2011 (July 2010 – June 2011)
Average Number of Cases Per Month (Range)	38 (19 - 65)	27 (0 - 82)
Average Number of Persons Per Month (Range)	120 (54 – 209)	86 (0 – 260)
Average Number of Adults Per Month (Range)	49 (24 – 88)	34 (0 – 106)
Average Number of Children Per Month (Range)	72 (30 – 121)	52 (0 – 160)
Recipients as a Percent of State’s Total Population	Trace	Trace
Total Statewide Population²	6,733,250	6,767,900
Children as a Percent of All Recipients	60%	61%
Average Persons Per Case	3.2	3.2
Average Children Per Case	1.9	1.9
Average Children Per Adult	1.5	1.5
Average Monthly Payment Per Case (Range)³	\$ 493.77 (\$446.78 - \$532.82)	\$ 468.04 (\$0 - \$497.89)

¹ CEAP ran out of funds as of February 1, 2011. A new WAC change allows the department to suspend the program when funds are exhausted. The suspension was lifted on July 1, 2011 for the start of the new fiscal year and will suspend again once funds become depleted.

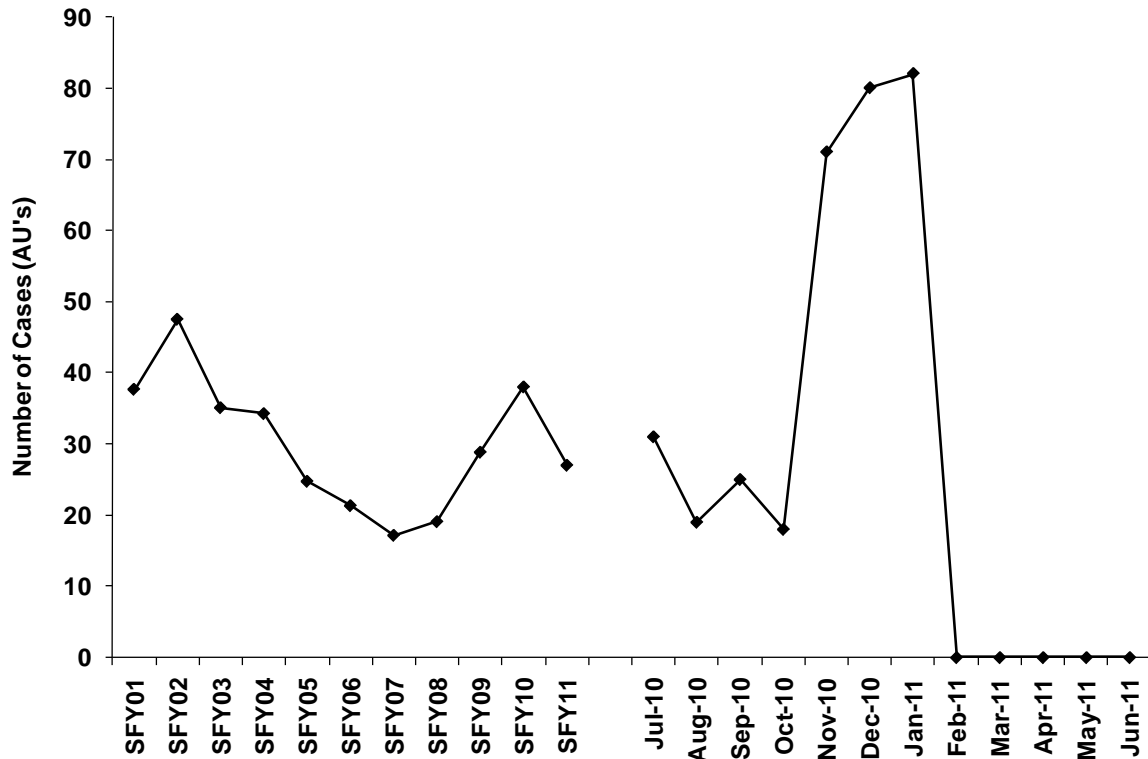
² OFM, 2011 Population Trends for Washington State.

³ Payments are not adjusted for refunds.

Other Programs

CEAP Caseload SFY 2002 - SFY 2011

Source: ESA-ACES Data



Year	Cases	Year	Cases
SFY02	48	SFY07	17
SFY03	35	SFY08	19
SFY04	34	SFY09	29
SFY05	25	SFY10	38
SFY06	21	SFY11	27

SFY 2011	Cases	Persons	Grant Expenditures	Average Payment Per Case
July	31	120	\$14,298.65	\$461.25
August	19	58	\$7,922.25	\$416.96
September	25	71	\$11,678.88	\$467.16
October	18	50	\$6,928.77	\$384.93
November	71	222	\$32,251.10	\$454.24
December	80	255	\$39,831.14	\$497.89
January	82	260	\$38,738.59	\$472.42
February	0	0	\$0.00	--
March	0	0	\$0.00	--
April	0	0	\$0.00	--
May	0	0	\$0.00	--
June	0	0	\$0.00	--
Avg. Mo.	27	86	\$12,637.45	\$468.04
Annual Unduplicated	324	1,030	151,649.38	

Other Programs

CEAP Annual Caseload by DSHS Region and CSO SFY 2011

Source: ESA-ACES Data

	Cases		Clients	
	Number	Percent	Number	Percent
Region 1				
Access Spokane 032	23	7.1%	64	6.2%
Clarkston CSO	2	0.6%	9	0.9%
Colfax CSO	0	0.0%	0	0.0%
Colville CSO	0	0.0%	0	0.0%
Ellensburg CSO	0	0.0%	0	0.0%
Goldendale CSO	0	0.0%	0	0.0%
Kennewick CSO	16	4.9%	55	5.3%
Mattawa CSO	2	0.6%	10	1.0%
Moses Lake CSO	9	2.8%	33	3.2%
Newport CSO	0	0.0%	0	0.0%
Okanogan CSO	0	0.0%	0	0.0%
Othello CSO	4	1.2%	13	1.3%
R2 Processing Center	0	0.0%	0	0.0%
Republic CSO	0	0.0%	0	0.0%
Sunnyside CSO	32	9.9%	110	10.7%
Walla Walla CSO	6	1.9%	16	1.6%
Wapato CSO	4	1.2%	15	1.5%
Wenatchee CSO	0	0.0%	0	0.0%
White Salmon CSO	1	0.3%	10	1.0%
Yakima CSO	2	0.6%	8	0.8%
Region Total	101	31.2%	343	33.3%
Region 2				
Alderwood CSO	6	1.9%	18	1.7%
Auburn CSO	1	0.3%	3	0.3%
Bellingham CSO	11	3.4%	29	2.8%
Belltown CSO	0	0.0%	0	0.0%
Capitol Hill CSO	2	0.6%	5	0.5%
Everett CSO	11	3.4%	31	3.0%
Federal Way CSO	2	0.6%	9	0.9%
King Eastside CSO	3	0.9%	8	0.8%
King North CSO	8	2.5%	25	2.4%
King South CSO	6	1.9%	25	2.4%
Mt Vernon CSO	16	4.9%	57	5.5%
Oak Harbor CSO	0	0.0%	0	0.0%
Rainier CSO	1	0.3%	3	0.3%
Renton CSO	3	0.9%	7	0.7%
Sky Valley CSO	2	0.6%	5	0.5%
Smokey Point CSO	2	0.6%	6	0.6%
White Center CSO	2	0.6%	6	0.6%
Region Total	76	23.5%	237	23.0%

Other Programs

CEAP Annual Caseload by DSHS Region and CSO (continued) SFY 2011

Source: ESA-ACES Data

	Cases		Clients	
	Number	Percent	Number	Percent
Region 3				
Aberdeen CSO	4	1.2%	9	0.9%
Bremerton CSO	35	10.8%	111	10.8%
Chehalis CSO	2	0.6%	6	0.6%
Columbia River CSO	58	17.9%	179	17.4%
Forks CSO	1	0.3%	2	0.2%
Friday Harbor Outstn	0	0.0%	0	0.0%
Kelso CSO	8	2.5%	25	2.4%
Lakewood CSO	0	0.0%	0	0.0%
Long Beach CSO	0	0.0%	0	0.0%
Olympia CSO	14	4.3%	45	4.4%
Pierce North CSO	5	1.5%	14	1.4%
Pierce South CSO	8	2.5%	20	1.9%
Port Angeles CSO	3	0.9%	9	0.9%
Port Townsend CSO	2	0.6%	7	0.7%
Puyallup Valley CSO	7	2.2%	23	2.2%
Shelton CSO	0	0.0%	0	0.0%
South Bend CSO	0	0.0%	0	0.0%
Stevenson CSO	0	0.0%	0	0.0%
Region Total	147	45.4%	450	43.7%
State Total	324	100.0%	1,030	100.00%

Other Programs

CEAP Annual Caseload by County of Residence SFY 2011

Source: ESA-ACES Data

County	Cases		Clients	
	Number	Percent	Number	Percent
Adams	4	1.2%	14	1.4%
Asotin	2	0.6%	9	0.9%
Benton	8	2.5%	26	2.5%
Chelan	0	0.0%	0	0.0%
Clallam	4	1.2%	11	1.1%
Clark	57	17.6%	177	17.2%
Columbia	1	0.3%	3	0.3%
Cowlitz	8	2.5%	25	2.4%
Douglas	0	0.0%	0	0.0%
Ferry	0	0.0%	0	0.0%
Franklin	10	3.1%	36	3.5%
Garfield	0	0.0%	0	0.0%
Grant	12	3.7%	44	4.3%
Grays Harbor	4	1.2%	9	0.9%
Island	0	0.0%	0	0.0%
Jefferson	2	0.6%	7	0.7%
King	28	8.7%	91	8.9%
Kitsap	34	10.5%	103	10.0%
Kittitas	0	0.0%	0	0.0%
Klickitat	1	0.3%	10	1.0%
Lewis	3	0.9%	8	0.8%
Lincoln	0	0.0%	0	0.0%
Mason	0	0.0%	0	0.0%
Okanogan	0	0.0%	0	0.0%
Pacific	0	0.0%	0	0.0%
Pend Oreille	0	0.0%	0	0.0%
Pierce	21	6.5%	65	6.3%
San Juan	0	0.0%	0	0.0%
Skagit	16	5.0%	57	5.5%
Skamania	0	0.0%	0	0.0%
Snohomish	21	6.5%	60	5.8%
Spokane	23	7.1%	64	6.2%
Stevens	0	0.0%	0	0.0%
Thurston	13	4.0%	43	4.2%
Wahkiakum	0	0.0%	0	0.0%
Walla Walla	5	1.5%	13	1.3%
Whatcom	11	3.4%	29	2.8%
Whitman	0	0.0%	0	0.0%
Yakima	35	10.8%	124	12.1%
State Total	324	100.0%	1,030	100.0%

Other Programs

CEAP Client Demographics SFY 2011

Source: ESA-ACES Data

Characteristic	All Clients		Adults Only	
	Number	Percent	Number	Percent
TOTAL	1,030	100.0%	411	100.0%
Gender				
Female	609	59.1%	301	73.2%
Male	421	40.9%	110	26.8%
Race				
White	408	39.6%	179	43.6%
Hispanic	322	31.3%	123	29.9%
Black	78	7.6%	31	7.5%
Asian/Pacific Islander	19	1.8%	8	1.9%
Native American	42	4.1%	23	5.6%
Unknown	161	15.6%	47	11.4%
Marital Status (Adults Only)				
Separated	43	4.2%	43	10.5%
Married	130	12.6%	129	31.4%
Never Married	825	80.1%	207	50.4%
Divorced	24	2.3%	24	5.8%
Widow	3	0.3%	3	0.7%
Unknown	5	0.5%	5	1.2%
Citizenship¹				
U.S. Citizen	727	70.6%	280	68.1%
Resident Alien	12	1.2%	10	2.4%
U.S. National	2	0.2%	1	0.2%
Undocumented Alien	287	27.9%	118	28.7%
Unknown	2	0.2%	2	0.5%
Age				
< 1 Year Old	13	1.3%	0	0.0%
1-5 Years Old	191	18.5%	0	0.0%
6-10 Years Old	171	16.6%	0	0.0%
11-15 Years Old	166	16.1%	0	0.0%
16-17 Years Old	64	6.2%	2	0.5%
18-20 Years Old	27	2.6%	13	3.2%
21-29 Years Old	154	15.0%	152	37.0%
30-39 Years Old	141	13.7%	141	34.3%
40-49 Years Old	82	8.0%	82	20.0%
50-55 Years Old	14	1.4%	14	3.4%
56-59 Years Old	6	0.6%	6	1.5%
60-64 Years Old	1	0.1%	1	0.2%
Mean Age of Children	8.7 Years Old			
Median Age of Children	8.0 Years Old			
Mean Age of Adults	33.0 Years Old			
Median Age of Adults	33.1 Years Old			

¹ See Refugee/Immigrant section, page 24 for glossary of Citizenship terms.

Other Programs

Selected DCA Program Characteristics SFY 2010 and SFY 2011

Source: ESA-ACES Data

	SFY 2010 (July 2009 – June 2010)	SFY 2011 (July 2010 – June 2011)
Average Number of Cases Per Month (Range)	685 (510 - 777)	560 (290 - 933)
Average Number of Persons Per Month (Range)	2,201 (1,654 – 2,535)	1,782 (909 – 2,977)
Average Number of Adults Per Month (Range)	922 (699 – 1,047)	752 (401 – 1,243)
Average Number of Children Per Month (Range)	1,280 (955 – 1,489)	1,029 (508 – 1,743)
Recipients as a Percent of State's Total Population	Trace	Trace
Total Population¹	6,733,250	6,767,900
Children as a Percent of All Recipients	58.2%	57.7%
Average Persons Per Case	3.2	3.2
Average Children Per Case	1.9	1.8
Average Children Per Adult	1.4	1.4
Average Monthly Payment Per Case (Range)²	\$1,423.64 (\$1,408.27 – \$1,436.75)	\$1,201.55 (\$961.80 – \$1,440.70)

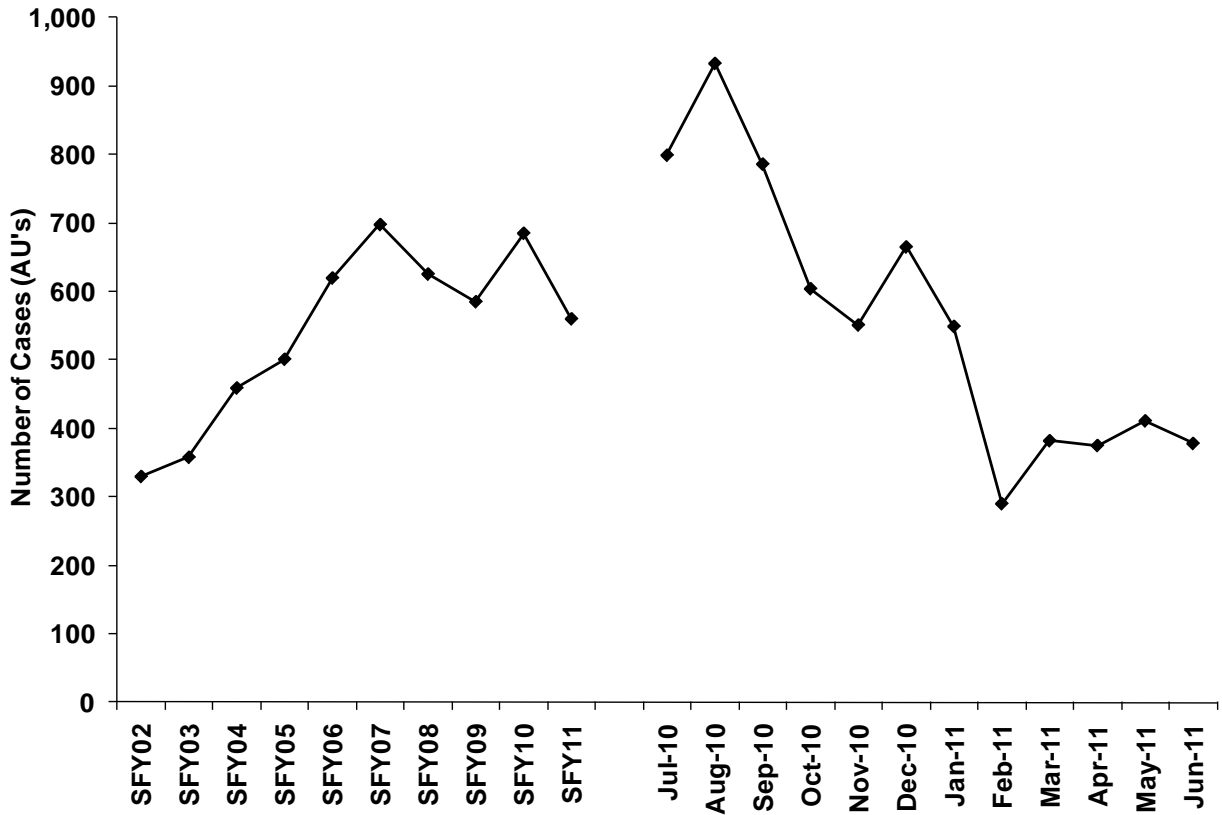
¹ OFM, 2011 Population Trends for Washington State

² Payments are not adjusted for refunds.

Other Programs

DCA Caseload SFY 2002 – SFY 2011

Source: ESA-ACES Data



SFY 2011	Cases	Persons	Grant Expenditures	Average Payment Per Case
July	799	2,528	\$1,151,120.96	\$1,440.70
August	933	2,977	\$1,336,698.66	\$1,432.69
September	786	2,499	\$1,103,493.44	\$1,403.94
October	604	1,894	\$728,672.40	\$1,206.41
November	551	1,772	\$660,321.97	\$1,198.41
December	665	2,159	\$783,971.50	\$1,178.90
January	549	1,797	\$532,521.61	\$969.98
February	290	909	\$281,473.11	\$970.60
March	382	1,182	\$370,055.08	\$968.73
April	375	1,141	\$364,188.99	\$971.17
May	411	1,308	\$398,331.92	\$969.18
June	378	1,213	\$363,559.38	\$961.80
Mo. Avg.	560	1,782	\$672,867.00	\$1,201.55

Other Programs

DCA Caseload by DSHS Region and CSO

June 2011

Source: ESA-ACES Data

	Cases		Clients	
	Number	Percent	Number	Percent
Region 1				
Access Spokane 032	56	14.8%	179	14.8%
Clarkston CSO	0	0.0%	0	0.0%
Colfax CSO	0	0.0%	0	0.0%
Colville CSO	1	0.3%	3	0.2%
Ellensburg CSO	3	0.8%	7	0.6%
Goldendale CSO	4	1.1%	15	1.2%
Kennewick CSO	8	2.1%	28	2.3%
Mattawa CSO	0	0.0%	0	0.0%
Moses Lake CSO	1	0.3%	2	0.2%
Newport CSO	0	0.0%	0	0.0%
Okanogan CSO	0	0.0%	0	0.0%
Othello CSO	0	0.0%	0	0.0%
Pomeroy Outstation	0	0.0%	0	0.0%
R2 Processing Center	0	0.0%	0	0.0%
Republic CSO	0	0.0%	0	0.0%
Sunnyside CSO	1	0.3%	3	0.2%
Walla Walla CSO	8	2.1%	29	2.4%
Wapato CSO	3	0.8%	11	0.9%
Wenatchee CSO	2	0.5%	6	0.5%
White Salmon CSO	3	0.8%	11	0.9%
Yakima CSO	3	0.8%	9	0.7%
Region Total	93	24.6%	303	25.0%
Region 2				
Alderwood CSO	6	1.6%	16	1.3%
Auburn CSO	3	0.8%	13	1.1%
Bellingham CSO	13	3.4%	49	4.0%
Belltown CSO	1	0.3%	2	0.2%
Capitol Hill CSO	2	0.5%	6	0.5%
Everett CSO	14	3.7%	50	4.1%
Federal Way CSO	5	1.3%	16	1.3%
King Eastside CSO	6	1.6%	20	1.6%
King North CSO	7	1.9%	23	1.9%
King South CSO	4	1.1%	12	1.0%
Mt Vernon CSO	4	1.1%	16	1.3%
Oak Harbor CSO	0	0.0%	0	0.0%
Rainier CSO	5	1.3%	20	1.6%
Renton CSO	5	1.3%	11	0.9%
Sky Valley CSO	3	0.8%	6	0.5%
Smokey Point CSO	9	2.4%	25	2.1%
White Center CSO	6	1.6%	18	1.5%
Region Total	93	24.6%	303	25.0%

Other Programs

DCA Caseload by DSHS Region and CSO (continued)

June 2011

Source: ESA-ACES Data

	Cases		Clients	
	Number	Percent	Number	Percent
Region 3				
Aberdeen CSO	8	2.1%	28	2.3%
Bremerton CSO	7	1.9%	26	2.1%
Chehalis CSO	8	2.1%	30	2.5%
Columbia River CSO	81	21.4%	251	20.7%
Forks CSO	0	0.0%	0	0.0%
Friday Harbor Outstn	0	0.0%	0	0.0%
Kelso CSO	7	1.9%	23	1.9%
Lakewood CSO	18	4.8%	47	3.9%
Long Beach CSO	0	0.0%	0	0.0%
Olympia CSO	14	3.7%	42	3.5%
Pierce North CSO	9	2.4%	21	1.7%
Pierce South CSO	22	5.8%	76	6.3%
Port Angeles CSO	2	0.5%	9	0.7%
Port Townsend CSO	0	0.0%	0	0.0%
Puyallup Valley CSO	9	2.4%	32	2.6%
Shelton CSO	2	0.5%	6	0.5%
South Bend CSO	2	0.5%	7	0.6%
Stevenson CSO	3	0.8%	9	0.7%
Region Total	192	50.8%	607	50.0%
State Total	378	100.0%	1,213	100.0%

Other Programs

DCA Caseload by County of Residence June 2011

Source: ESA-ACES Data

County	Cases		Clients	
	Number	Percent	Number	Percent
Adams	0	0.0%	0	0.0%
Asotin	0	0.0%	0	0.0%
Benton	5	1.3%	17	1.4%
Chelan	0	0.0%	0	0.0%
Clallam	2	0.5%	9	0.7%
Clark	81	21.4%	252	20.8%
Columbia	0	0.0%	0	0.0%
Cowlitz	6	1.6%	20	1.6%
Douglas	2	0.5%	6	0.5%
Ferry	0	0.0%	0	0.0%
Franklin	3	0.8%	12	1.0%
Garfield	0	0.0%	0	0.0%
Grant	1	0.3%	2	0.2%
Grays Harbor	9	2.4%	31	2.6%
Island	0	0.0%	0	0.0%
Jefferson	0	0.0%	0	0.0%
King	46	12.2%	148	12.2%
Kitsap	6	1.6%	21	1.7%
Kittitas	3	0.8%	7	0.6%
Klickitat	8	2.1%	28	2.3%
Lewis	7	1.9%	27	2.2%
Lincoln	2	0.5%	4	0.3%
Mason	2	0.5%	6	0.5%
Okanogan	0	0.0%	0	0.0%
Pacific	2	0.5%	7	0.6%
Pend Oreille	0	0.0%	0	0.0%
Pierce	58	15.3%	176	14.5%
San Juan	0	0.0%	0	0.0%
Skagit	4	1.1%	16	1.3%
Skamania	3	0.8%	9	0.7%
Snohomish	32	8.5%	97	8.0%
Spokane	53	14.0%	173	14.3%
Stevens	2	0.5%	5	0.4%
Thurston	14	3.7%	42	3.5%
Wahkiakum	0	0.0%	0	0.0%
Walla Walla	8	2.1%	29	2.4%
Whatcom	13	3.4%	49	4.0%
Whitman	0	0.0%	0	0.0%
Yakima	6	1.6%	20	1.6%
State Total	378	100.0%	1,213	100.0%

Other Programs

DCA Client Demographics June 2011

Source: ESA-ACES Data

Characteristic	All Clients		Adults Only	
	Number	Percent	Number	Percent
TOTAL	1,213	100.0%	497	100.0%
Gender				
Female	722	59.5%	354	71.2%
Male	491	40.5%	143	28.8%
Race				
White	669	55.2%	305	61.4%
Hispanic	125	10.3%	43	8.7%
Black	117	9.6%	50	10.1%
Asian/Pacific Islander	53	4.4%	22	4.4%
Native American	19	1.6%	11	2.2%
Unknown	230	19.0%	66	13.3%
Marital Status (Adults Only)				
Separated	47	3.9%	47	9.5%
Married	154	12.7%	152	30.6%
Never Married	949	78.2%	235	47.3%
Divorced	61	5.0%	61	12.3%
Widowed	1	0.1%	1	0.2%
Unknown	1	0.1%	1	0.2%
Citizenship¹				
U.S. Citizen	1,156	95.3%	460	92.6%
Resident Alien	57	4.7%	37	7.4%
Age				
< 1 Year Old	69	5.7%	0	0.0%
1-5 Years Old	263	21.7%	0	0.0%
6-10 Years Old	191	15.7%	0	0.0%
11-15 Years Old	136	11.2%	0	0.0%
16-17 Years Old	47	3.9%	0	0.0%
18-20 Years Old	41	3.4%	31	6.2%
21-29 Years Old	213	17.6%	213	42.9%
30-39 Years Old	178	14.7%	178	35.8%
40-49 Years Old	59	4.9%	59	11.9%
50-55 Years Old	13	1.1%	13	2.6%
56-59 Years Old	1	0.1%	1	0.2%
60-64 Years Old	2	0.2%	2	0.4%
Mean Age of Children	6.9 Years Old			
Median Age of Children	6.0 Years Old			
Mean Age of Adults	31.0 Years Old			
Median Age of Adults	30.0 Years Old			

¹ See Refugee/Immigrant section, page 24 for glossary of Citizenship terms.

Other Programs

Selected OAR Program Characteristics SFY 2010 and SFY 2011

Source: ESA-ACES Data

	SFY 2010 (July 2009 – June 2010)	SFY 2011 (July 2010 – June 2011)
Average Number of Cases Per Month (Range)	330 (326 - 332)	319 (302 - 330)
Average Number of Persons Per Month (Range)	339 (335 - 342)	326 (308 - 338)
Average Number of Adults Per Month (Range)	329 (326 - 332)	316 (298 - 327)
Average Number of Children Per Month (Range)	10 (5-13)	11 (6-14)
Recipients as a Percent of State's Total Population	Trace	Trace
Total Statewide Population ¹	6,733,250	6,767,900
Children as a Percent of All Recipients	2.9%	3.4%
Average Persons Per Case	1	1
Average Children Per Case	0	0
Average Children Per Adult	0	0
Average Monthly Payment Per Case (Range) ²	\$51.46 (\$46.79 – \$57.26)	\$46.68 (\$45.24 – \$48.16)

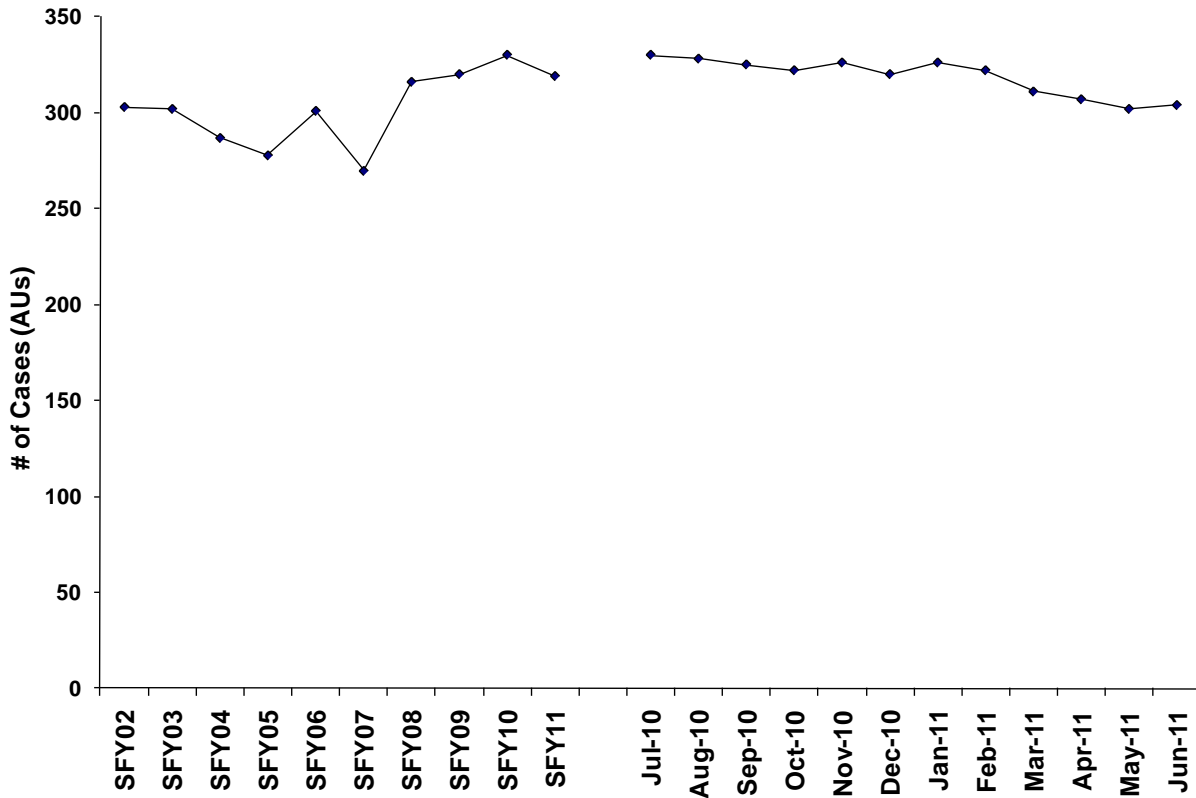
¹ OFM, 2011 Population Trends for Washington State

² Payments are not adjusted for refunds.

Other Programs

OAR Caseload SFY 2002 - SFY 2011

Source: ESA-ACES Data



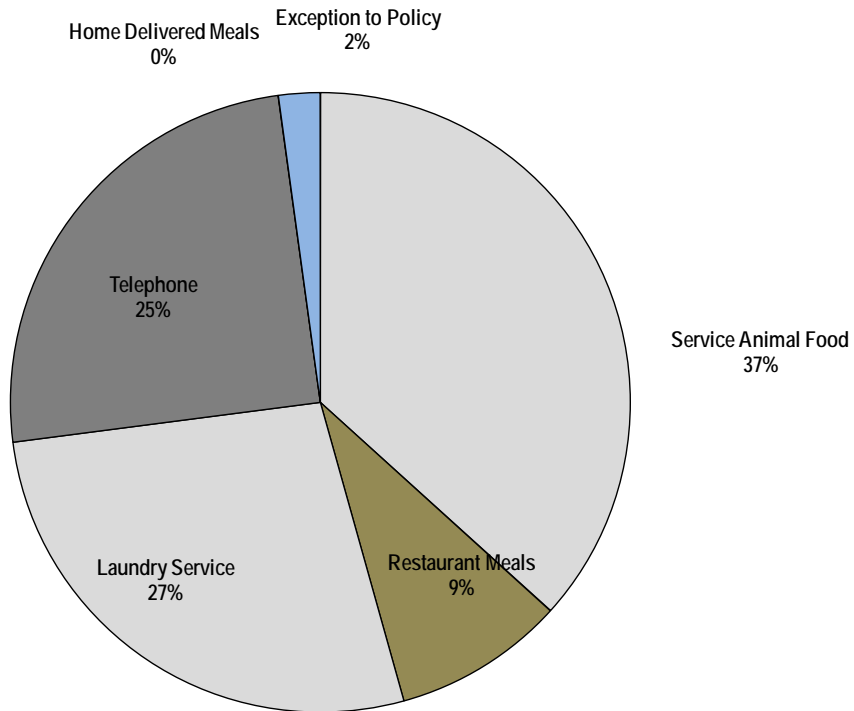
Year	Cases	Year	Cases
SFY02	303	SFY07	270
SFY03	302	SFY08	316
SFY04	287	SFY09	320
SFY05	278	SFY10	330
SFY06	301	SFY11	319

SFY 2011	Cases	Persons	Total Expenditures	Average Payment Per Case
July	331	338	\$15,791.95	\$47.85
August	330	336	\$15,797.84	\$48.16
September	331	333	\$15,374.31	\$47.31
October	329	329	\$15,121.82	\$46.96
November	332	333	\$15,330.64	\$47.03
December	329	329	\$14,555.11	\$45.48
January	326	335	\$15,501.70	\$47.55
February	330	331	\$15,104.39	\$46.91
March	327	317	\$14,515.08	\$46.67
April	332	309	\$14,068.26	\$45.82
May	332	308	\$13,662.01	\$45.24
June	330	316	\$13,864.23	\$45.61
Mo. Avg.	319	326	\$14,808.67	\$46.68

Other Programs

Average Monthly OAR Caseload by Service Type¹ SFY 2011

Source: ESA-ACES Data



OAR Case Type	OAR Cases	
	Number	Percent
Service Animal Food	152	36.7%
Laundry Service	113	27.3%
Telephone	103	24.9%
Restaurant Meals	37	8.9%
Exception to Policy ²	9	2.2%
Home Delivered Meals	0	0.0%
Total Cases	414	100%

¹ Numbers are based on the average monthly caseload by type. Several cases received more than one type of OAR. Therefore, the sum of OAR cases by type may sum to more than the monthly average of unduplicated cases that received OAR.

² ETR (Exception to Rule), formerly ETP (Exception to Policy), is detailed in WAC 388-440-0001.

Other Programs

OAR Caseload by DSHS Region, CSO, and HCS Office June 2011

Source: ESA-ACES Data

	Cases		Clients	
	Number	Percent	Number	Percent
Region 1				
Access Spokane 032	9	3.0%	12	3.8%
Clarkston CSO	0	0.0%	0	0.0%
Colfax CSO	0	0.0%	0	0.0%
Colville CSO	0	0.0%	0	0.0%
Ellensburg CSO	0	0.0%	0	0.0%
Goldendale CSO	0	0.0%	0	0.0%
Kennewick CSO	0	0.0%	0	0.0%
Mattawa CSO	0	0.0%	0	0.0%
Moses Lake CSO	1	0.3%	1	0.3%
Newport CSO	0	0.0%	0	0.0%
Okanogan CSO	0	0.0%	0	0.0%
Othello CSO	0	0.0%	0	0.0%
R2 Processing Center	0	0.0%	0	0.0%
Republic CSO	1	0.3%	1	0.3%
Sunnyside CSO	0	0.0%	0	0.0%
Walla Walla CSO	0	0.0%	0	0.0%
Wapato CSO	0	0.0%	0	0.0%
Wenatchee CSO	0	0.0%	0	0.0%
White Salmon CSO	0	0.0%	0	0.0%
Yakima CSO	0	0.0%	0	0.0%
Region Total	11	3.6%	14	4.4%
Region 2				
Alderwood CSO	1	0.3%	1	0.3%
Auburn CSO	1	0.3%	1	0.3%
Bellingham CSO	3	1.0%	9	2.8%
Belltown CSO	2	0.7%	2	0.6%
Capitol Hill CSO	0	0.0%	0	0.0%
Everett CSO	1	0.3%	1	0.3%
Federal Way CSO	0	0.0%	0	0.0%
King Eastside CSO	0	0.0%	0	0.0%
King North CSO	0	0.0%	0	0.0%
King South CSO	0	0.0%	0	0.0%
Mt Vernon CSO	2	0.7%	2	0.6%
Oak Harbor CSO	0	0.0%	0	0.0%
Rainier CSO	0	0.0%	0	0.0%
Renton CSO	0	0.0%	0	0.0%
Sky Valley CSO	0	0.0%	0	0.0%
Smokey Point CSO	0	0.0%	0	0.0%
White Center CSO	1	0.3%	1	0.3%
Region Total	11	3.6%	17	5.4%

Other Programs

OAR Caseload by DSHS Region, CSO, and HCS Office¹ (continued) June 2011

Source: ESA-ACES Data

	Cases		Clients	
	Number	Percent	Number	Percent
Region 3				
Aberdeen CSO	1	0.3%	1	0.3%
Bremerton CSO	3	1.0%	3	0.9%
Chehalis CSO	2	0.7%	5	1.6%
Columbia River CSO	1	0.3%	1	0.3%
Forks CSO	0	0.0%	0	0.0%
Friday Harbor Outstn	0	0.0%	0	0.0%
Kelso CSO	2	0.7%	2	0.6%
Lakewood CSO	2	0.7%	2	0.6%
Long Beach CSO	0	0.0%	0	0.0%
Olympia CSO	8	2.6%	8	2.5%
Pierce North CSO	0	0.0%	0	0.0%
Pierce South CSO	1	0.3%	1	0.3%
Port Angeles CSO	4	1.3%	4	1.3%
Port Townsend CSO	0	0.0%	0	0.0%
Puyallup Valley CSO	1	0.3%	1	0.3%
Shelton CSO	0	0.0%	0	0.0%
South Bend CSO	0	0.0%	0	0.0%
Stevenson CSO	0	0.0%	0	0.0%
Region Total	25	8.2%	28	8.9%
HCS Region 1				
Clarkston Hcs Office	0	0.0%	0	0.0%
Colville Hcs Office	0	0.0%	0	0.0%
Ellensburg Hcs	1	0.3%	1	0.3%
Moses Lk Hcs Office	0	0.0%	0	0.0%
Okanogan Hcs Office	0	0.0%	0	0.0%
Spokane Hcs Office	13	4.3%	13	4.1%
Sunnyside Hcs Office	0	0.0%	0	0.0%
Tri-Cities Hcs Ofc	0	0.0%	0	0.0%
Walla Walla Hcs Ofc	1	0.3%	1	0.3%
Wapato				
HCS	0	0.0%	0	0.0%
Wenatchee HCS Office	0	0.0%	0	0.0%
Yakima HCS Office	0	0.0%	0	0.0%
Region				
Total	15	4.9%	15	4.7%

¹ A number of OAR cases received services through a Home Community Service Center (HCS) administered through the Aging and Adult Services Administration. These cases are listed separately since they are not part of a Community Services Division (CSD) Community Service Office.

Other Programs

OAR Caseload by DSHS Region, CSO, and HCS Office (continued)

June 2011

Source: ESA-ACES Data

	Cases		Clients	
	Number	Percent	Number	Percent
HCS Region 2				
Alderwood HCS Office	23	7.6%	23	7.3%
Bellingham HCS Ofc	1	0.3%	1	0.3%
Everett HCS Office	77	25.3%	77	24.4%
Holgate HCS Office	6	2.0%	6	1.9%
Mt Vernon HCS Office	1	0.3%	1	0.3%
Oak Harbor HCS	0	0.0%	0	0.0%
Skykomish HCS Office	2	0.7%	2	0.6%
Smokey Point HCS	6	2.0%	6	1.9%
Region Total	116	38.2%	116	36.7%
HCS Region 3				
Aberdeen HCS Office	0	0.0%	0	0.0%
Bremerton HCS Office	0	0.0%	0	0.0%
Chehalis HCS Office	0	0.0%	0	0.0%
Kelso HCS	1	0.3%	1	0.3%
Lacey HCS Office	1	0.3%	1	0.3%
Pacific County HCS	0	0.0%	0	0.0%
Port Angeles HCS	2	0.7%	2	0.6%
Puyallup HCS Office	0	0.0%	0	0.0%
Tacoma HCS Office	0	0.0%	0	0.0%
Vancouver HCS	2	0.7%	2	0.6%
Region Total	6	2.0%	6	1.9%
WASHCAP ¹	120	39.5%	120	38.0%
State Total	304	100.0%	316	100.0%

¹ The WASHCAP office is part of the Statewide Customer Service Call Center (CSC).

Other Programs

OAR Caseload by County of Residence June 2011

Source: ESA-ACES Data

County	Cases		Clients	
	Number	Percent	Number	Percent
Adams	0	0.0%	0	0.0%
Asotin	0	0.0%	0	0.0%
Benton	2	0.7%	2	0.6%
Chelan	0	0.0%	0	0.0%
Clallam	8	2.6%	8	2.5%
Clark	9	3.0%	9	2.8%
Columbia	0	0.0%	0	0.0%
Cowlitz	3	1.0%	3	0.9%
Douglas	0	0.0%	0	0.0%
Ferry	1	0.3%	1	0.3%
Franklin	1	0.3%	1	0.3%
Garfield	0	0.0%	0	0.0%
Grant	1	0.3%	1	0.3%
Grays Harbor	9	3.0%	9	2.8%
Island	2	0.7%	2	0.6%
Jefferson	3	1.0%	3	0.9%
King	24	7.9%	24	7.6%
Kitsap	13	4.3%	13	4.1%
Kittitas	0	0.0%	0	0.0%
Klickitat	0	0.0%	0	0.0%
Lewis	2	0.7%	5	1.6%
Lincoln	0	0.0%	0	0.0%
Mason	3	1.0%	3	0.9%
Okanogan	1	0.3%	1	0.3%
Pacific	1	0.3%	1	0.3%
Pend Oreille	1	0.3%	1	0.3%
Pierce	17	5.6%	17	5.4%
San Juan	0	0.0%	0	0.0%
Skagit	8	2.6%	8	2.5%
Skamania	0	0.0%	0	0.0%
Snohomish	130	42.8%	130	41.1%
Spokane	39	12.8%	42	13.3%
Stevens	0	0.0%	0	0.0%
Thurston	6	2.0%	12	3.8%
Wahkiakum	1	0.3%	1	0.3%
Walla Walla	2	0.7%	2	0.6%
Whatcom	11	3.6%	11	3.5%
Whitman	0	0.0%	0	0.0%
Yakima	6	2.0%	6	1.9%
State Total	304	100.0%	316	100.0%

Other Programs

OAR Client Demographics

June 2011

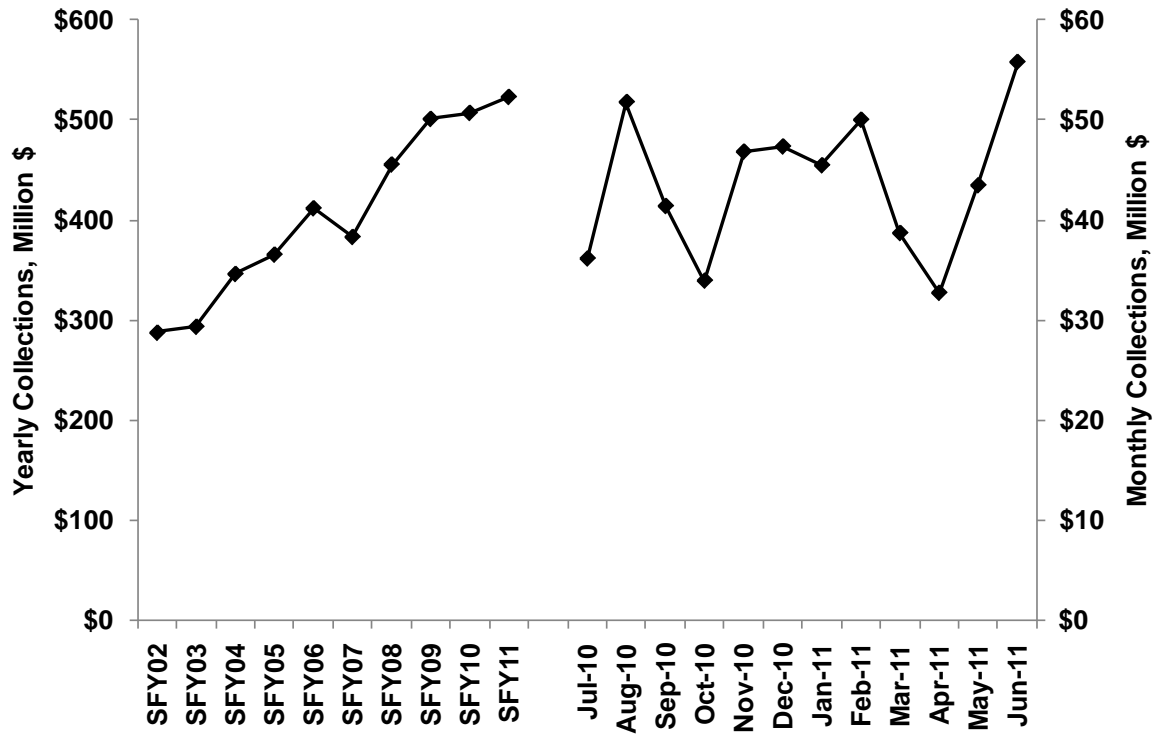
Source: ESA-ACES Data

Characteristic	All Clients	
	Number	Percent
TOTAL	316	100%
Gender		
Female	222	70.3%
Male	94	29.7%
Race		
White	245	77.5%
Hispanic	18	5.7%
Black	6	1.9%
Asian/Pacific Islander	18	5.7%
Native American	8	2.5%
Unknown	21	6.6%
Marital Status (Adults Only)		
Separated	26	8.2%
Married	44	13.9%
Never Married	114	36.1%
Divorced	92	29.1%
Widowed	35	11.1%
Unknown	5	1.6%
Citizenship		
U.S. Citizen	272	86.1%
Resident Alien	44	13.9%
Age		
< 1 Year Old	0	0.0%
1-5 Years Old	5	1.6%
6-10 Years Old	6	1.9%
11-15 Years Old	3	0.9%
16-17 Years Old	0	0.0%
18-20 Years Old	1	0.3%
21-29 Years Old	11	3.5%
30-39 Years Old	27	8.5%
40-49 Years Old	46	14.6%
50-55 Years Old	47	14.9%
56-59 Years Old	30	9.5%
60-64 Years Old	38	12.0%
65+ Years Old	102	32.3%
Mean Age of Adults	58.1 Years Old	
Median Age of Adults	58.0 Years Old	

Other Programs

OFR Total Collections SFY2002 – SFY2011

Source: Office of Financial Recovery

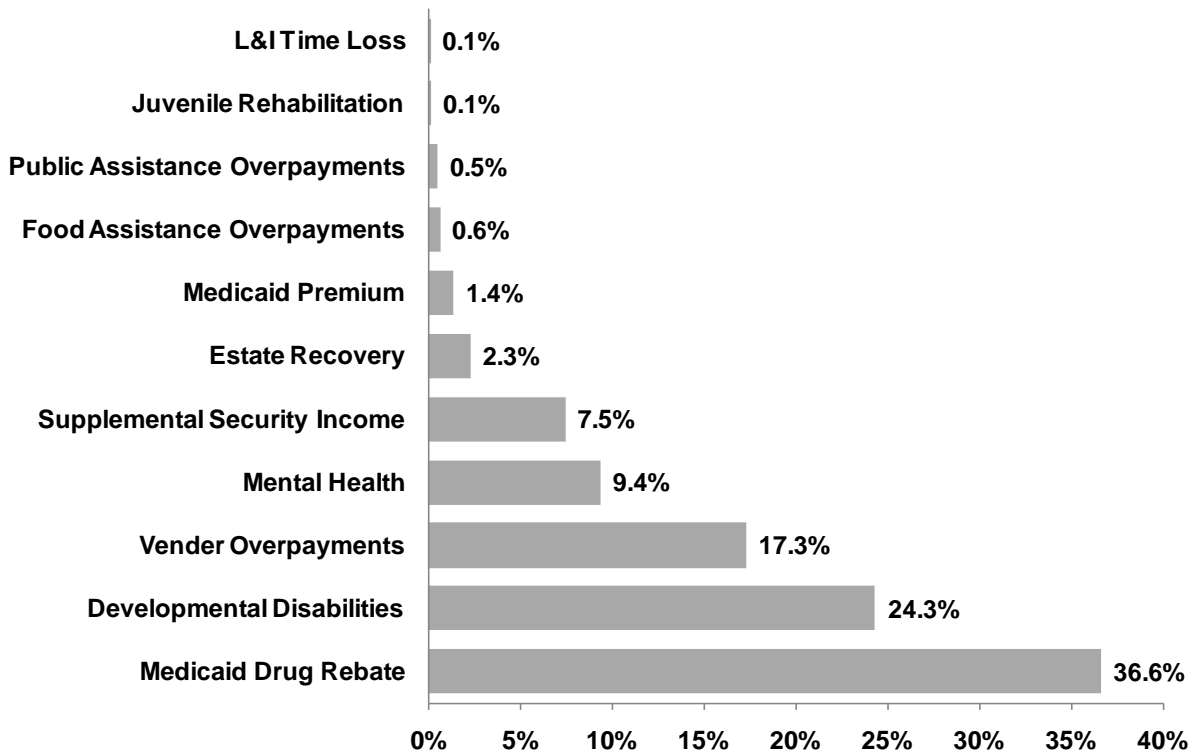


Year	Total Collections	Year	Total Collections
SFY02	\$287,842,100	SFY07	\$383,371,727
SFY03	\$293,790,698	SFY08	\$455,621,170
SFY04	\$346,440,101	SFY09	\$501,094,673
SFY05	\$365,748,404	SFY10	\$507,122,495
SFY06	\$411,945,972	SFY11	\$523,043,246

Other Programs

OFR Total Collections By Program SFY2011

Source: Office of Financial Recovery



<u>Program</u>	<u>SFY2009</u>	<u>SFY2010</u>	<u>SFY2011</u>
Public Assistance Overpayments	\$3,062,418	\$2,906,127	\$2,629,816
L&I Time Loss	\$534,967	\$488,518	\$493,995
Vender Overpayments	\$15,978,085	\$14,128,904	\$90,372,789
Estate Recovery	\$3,424,770	\$3,086,963	\$11,912,764
Food Assistance Overpayments	\$91,463,274	\$89,341,616	\$3,238,113
Medicaid Premium	\$3,993,932	\$5,911,940	\$7,227,135
Medicaid Drug Rebate	\$160,917,367	\$162,711,585	\$191,362,695
Supplemental Security Income	\$30,188,593	\$43,953,380	\$38,975,330
Juvenile Rehabilitation	\$967,830	\$863,106	\$647,580
Developmental Disabilities	\$139,507,401	\$135,439,926	\$127,215,422
Mental Health	\$51,056,036	\$48,290,430	\$48,967,607
Total	\$501,094,673	\$507,122,495	\$523,043,246

Other Programs

Selected RCA Program Characteristics SFY 2010 and SFY 2011

Source: ESA-ACES Data

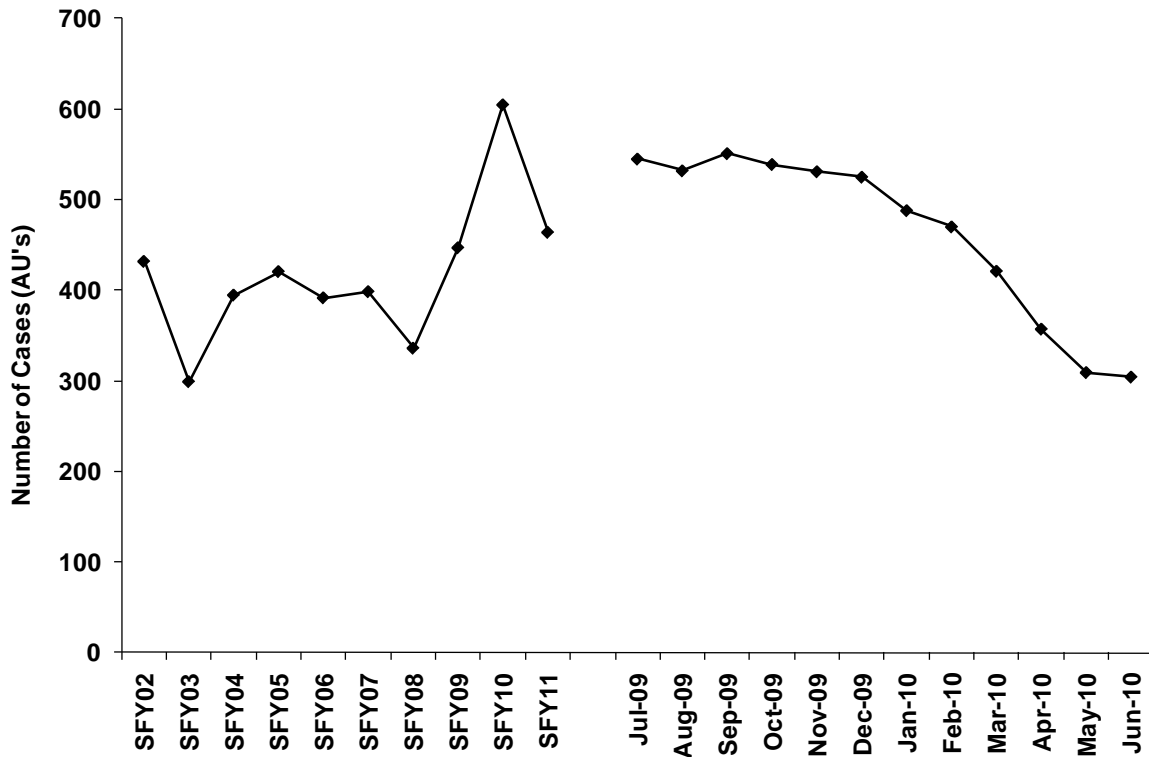
	SFY10 (July 09 – June 10)	SFY11 (July 10 – June 11)
Average Number of Cases Per Month (Range)	605 (520 - 648)	464 (304 - 551)
Average Number of Persons Per Month (Range)	687 (592 - 744)	515 (333 - 612)
Recipients as a Percent of State's Total Population	Trace	Trace
State Total Population ¹	6,733,250	6,767,900
Recipients as a Percent of State's Population Age 18 and Over	Trace	Trace
State Population Age 18 and Over ¹	5,149,729	5,19,318
Average Persons Per Case	1.1	1.1
Average Monthly Payment Per Case (Range) ²	\$337.46 (\$331.60 - \$343.05)	\$322.12 (\$276.88 - \$345.32)

¹ OFM, 2011 Population Trends for Washington State

² Payments are not adjusted for refunds.

Other Programs

RCA Caseload SFY 2002 - SFY 2011 Source: ESA-ACES Data



Year	Cases	Year	Cases
SFY02	432	SFY07	398
SFY03	299	SFY08	336
SFY04	395	SFY09	447
SFY05	421	SFY10	605
SFY06	392	SFY11	464

SFY 2011	Cases	Persons	Grant Expenditures	Average Payment Per Case
July	545	608	\$185,296.28	\$339.99
August	532	593	\$176,257.28	\$331.31
September	551	612	\$183,507.54	\$333.04
October	539	603	\$181,873.54	\$337.43
November	531	585	\$178,836.94	\$336.79
December	525	584	\$181,286.94	\$345.31
January	488	539	\$168,517.94	\$345.32
February	470	513	\$135,426.94	\$288.14
March	421	467	\$123,275.26	\$292.82
April	357	398	\$105,663.00	\$295.97
May	309	341	\$89,466.72	\$289.54
June	304	333	\$84,172.00	\$276.88
Mo. Avg.	464	515	\$149,465.03	\$322.12

Other Programs

RCA Caseload by Country of Origin June 2011

Source: ESA-ACES Data

Country	Number of Cases	Percent of Statewide Cases
Afghanistan	1	0.3%
Argentina	1	0.3%
Armenia	2	0.6%
Azerraijan	1	0.3%
Belorussia	1	0.3%
Bhutan	15	4.5%
Bulgaria	4	1.2%
Burma	15	4.5%
Cameroon	1	0.3%
Congo	2	0.6%
Cuba	5	1.5%
Egypt	1	0.3%
Ethiopia	31	9.3%
El Salvador	1	0.3%
Eritrea	41	12.3%
Gambia, The	4	1.2%
Georgia	2	0.6%
Guatemala	1	0.3%
Iran	42	12.6%
Iraq	44	13.2%
Kazakhstan	1	0.3%
Kenya	4	1.2%
Kyrgystan	9	2.7%
Laos	2	0.6%
Liberia	1	0.3%
Malaysia	2	0.6%
Mexico	2	0.6%
Moldovia	10	3.0%
Mongolia	2	0.6%
Nepal	11	3.3%
Pakistan	1	0.3%
Russia	5	1.5%
Rwanda	1	0.3%
Saint Martin	2	0.6%
Somalia	38	11.4%
Thailand	3	0.9%
Uganda	1	0.3%
Ukraine	9	2.7%
Vietnam	1	0.3%
Other Country	13	3.9%
Total	333	100%

Other Programs

RCA Caseload by DSHS Region and CSO

June 2011

Source: ESA-ACES Data

	Cases		Clients	
	Number	Percent	Number	Percent
Region 1				
Access Spokane 032	17	5.6%	19	5.7%
Clarkston CSO	2	0.7%	2	0.6%
Colfax CSO	0	0.0%	0	0.0%
Colville CSO	0	0.0%	0	0.0%
Ellensburg CSO	0	0.0%	0	0.0%
Goldendale CSO	0	0.0%	0	0.0%
Kennewick CSO	13	4.3%	18	5.4%
Mattawa CSO	0	0.0%	0	0.0%
Moses Lake CSO	0	0.0%	0	0.0%
Newport CSO	0	0.0%	0	0.0%
Okanogan CSO	0	0.0%	0	0.0%
Othello CSO	0	0.0%	0	0.0%
Pomeroy Outstation	0	0.0%	0	0.0%
R2 Processing Center	0	0.0%	0	0.0%
Republic CSO	0	0.0%	0	0.0%
Sunnyside CSO	0	0.0%	0	0.0%
Walla Walla CSO	0	0.0%	0	0.0%
Wapato CSO	0	0.0%	0	0.0%
Wenatchee CSO	0	0.0%	0	0.0%
White Salmon CSO	0	0.0%	0	0.0%
Yakima CSO	0	0.0%	0	0.0%
Region Total	32	10.5%	39	11.7%
Region 2				
Alderwood CSO	12	3.9%	14	4.2%
Auburn CSO	0	0.0%	0	0.0%
Bellingham CSO	2	0.7%	3	0.9%
Belltown CSO	7	2.3%	7	2.1%
Capitol Hill CSO	7	2.3%	7	2.1%
Everett CSO	10	3.3%	12	3.6%
Federal Way CSO	4	1.3%	6	1.8%
King Eastside CSO	22	7.2%	26	7.8%
King North CSO	27	8.9%	27	8.1%
King South CSO	60	19.7%	66	19.8%
Mt Vernon CSO	0	0.0%	0	0.0%
Oak Harbor CSO	0	0.0%	0	0.0%
Rainier CSO	23	7.6%	24	7.2%
Renton CSO	17	5.6%	18	5.4%
Sky Valley CSO	0	0.0%	0	0.0%
Smokey Point CSO	2	0.7%	2	0.6%
Walla Walla-Columbia	0	0.0%	0	0.0%
White Center CSO	49	16.1%	50	15.0%
Region Total	242	79.6%	262	78.7%

Other Programs

RCA Caseload by DSHS Region and CSO (continued)

June 2011

Source: ESA-ACES Data

	Cases		Clients	
	Number	Percent	Number	Percent
Region 3				
Aberdeen CSO	0	0.0%	0	0.0%
Bremerton CSO	0	0.0%	0	0.0%
Chehalis CSO	0	0.0%	0	0.0%
Columbia River CSO	11	3.6%	13	3.9%
Forks CSO	0	0.0%	0	0.0%
Friday Harbor Outstn	0	0.0%	0	0.0%
Kelso CSO	0	0.0%	0	0.0%
Lakewood CSO	1	0.3%	1	0.3%
Long Beach CSO	0	0.0%	0	0.0%
Olympia CSO	1	0.3%	1	0.3%
Pierce North CSO	3	1.0%	3	0.9%
Pierce South CSO	2	0.7%	2	0.6%
Port Angeles CSO	0	0.0%	0	0.0%
Port Townsend CSO	0	0.0%	0	0.0%
Puyallup Valley CSO	1	0.3%	1	0.3%
Shelton CSO	0	0.0%	0	0.0%
South Bend CSO	0	0.0%	0	0.0%
Stevenson CSO	0	0.0%	0	0.0%
Region Total	19	6.3%	21	6.3%
Statewide Customer Serv. Call Cntr				
Customer Svc Cntr	11	3.6%	11	3.3%
Hq Cust Serv Center	0	0.0%	0	0.0%
Mobile Cso East	0	0.0%	0	0.0%
Mobile Cso West	0	0.0%	0	0.0%
Region Total	11	3.6%	11	3.3%
State Total	304	100.0%	333	100.0%

Other Programs

RCA Caseload by County of Residence June 2011

Source: ESA-ACES Data

County	Cases		Clients	
	Number	Percent	Number	Percent
Adams	0	0.0%	0	0.0%
Asotin	0	0.0%	0	0.0%
Benton	13	4.3%	18	5.4%
Chelan	0	0.0%	0	0.0%
Clallam	0	0.0%	0	0.0%
Clark	12	3.9%	14	4.2%
Columbia	0	0.0%	0	0.0%
Cowlitz	0	0.0%	0	0.0%
Douglas	0	0.0%	0	0.0%
Ferry	0	0.0%	0	0.0%
Franklin	0	0.0%	0	0.0%
Garfield	0	0.0%	0	0.0%
Grant	0	0.0%	0	0.0%
Grays Harbor	0	0.0%	0	0.0%
Island	0	0.0%	0	0.0%
Jefferson	0	0.0%	0	0.0%
King	223	73.4%	238	71.5%
Kitsap	0	0.0%	0	0.0%
Kittitas	0	0.0%	0	0.0%
Klickitat	0	0.0%	0	0.0%
Lewis	0	0.0%	0	0.0%
Lincoln	0	0.0%	0	0.0%
Mason	0	0.0%	0	0.0%
Okanogan	0	0.0%	0	0.0%
Pacific	0	0.0%	0	0.0%
Pend Oreille	0	0.0%	0	0.0%
Pierce	7	2.3%	7	2.1%
San Juan	0	0.0%	0	0.0%
Skagit	0	0.0%	0	0.0%
Skamania	0	0.0%	0	0.0%
Snohomish	27	8.9%	31	9.3%
Spokane	17	5.6%	19	5.7%
Stevens	0	0.0%	0	0.0%
Thurston	1	0.3%	1	0.3%
Wahkiakum	0	0.0%	0	0.0%
Walla Walla	0	0.0%	0	0.0%
Whatcom	2	0.7%	3	0.9%
Whitman	2	0.7%	2	0.6%
Yakima	0	0.0%	0	0.0%
State Total	304	100.0%	333	100.0%

Other Programs

RCA Client Demographics

June 2011

Source: ESA-ACES Data

Characteristic	All Clients/Adults	
	Number	Percent
TOTAL	333	100%
Gender		
Female	132	39.6%
Male	201	60.4%
Race		
White	39	11.7%
Hispanic	34	10.2%
Black	69	20.7%
Asian/Pacific Islander	26	7.8%
Unknown	165	49.5%
Marital Status (Adults Only)		
Separated	16	4.8%
Married	64	19.2%
Never Married	226	67.9%
Divorced	4	1.2%
Widowed	9	2.7%
Unknown	14	4.2%
Citizenship¹		
Resident Alien	333	100.0%
Age		
18 Years Old	9	2.7%
19 – 20 Years Old	43	12.9%
21 – 29 Years Old	131	39.3%
30 – 39 Years Old	69	20.7%
40 – 49 Years Old	20	6.0%
50 – 55 Years Old	10	3.0%
56 – 59 Years Old	20	6.0%
60 – 64 Years Old	14	4.2%
65 + Years Old	17	5.1%
Mean Age of Adults	33.7Years Old	
Median Age of Adults	28.0 Years Old	

¹ See Refugee/Immigrant section, page 24 for glossary of Citizenship terms.

Other Programs

Selected SSP Program Characteristics¹ SFY 2010 and SFY 2011

Source: ESA-ACES Data

	SFY 2010 (July 2009 – June 2010)	SFY 2011 (July 2010 – June 2011)
Average Number of Cases Per Month (Range)	32,526 (32,161 – 32,907)	33,237 (32,926 – 33,523)
Average Number of Persons Per Month (Range)	32,526 (32,161 – 32,907)	33,237 (32,926 – 33,523)
Recipients as a Percent of State's Total Population	Trace	Trace
State Total Population²	6,733,250	6,767,900
Recipients as a Percent of State's Population Age 18 and Over	Trace	Trace
State Population Age 18 and Over³	5,149,729	5,193,198
Average Persons Per Case	1	1
Average Monthly Payment Per Case (Range)⁴	\$48.58 (\$46 – 76.92)	\$47.23 (\$46 – 60.63)

¹ The Social Security Act requires the state of Washington to maintain a State Supplemental Program (SSP) because Washington operated a state-funded assistance program prior to the implementation of the federal Supplemental Security Income (SSI) program in 1974. Washington State is also required to tell the Social Security Administration (SSA) each year how the program will be managed through an annual State Plan agreement. Since the inception of SSP, Washington State has paid SSA to administer the program.

The 2002 Washington State Legislature redirected the funding for SSP effective July 1, 2002. Funding for SSP was divided between the Division of Developmental Disabilities (DDD) and the Economic Services Administration (ESA). ESA was given \$4.8 million of the \$28.9 million maintenance of effort (MOE) money to spend on SSI recipients who have an SSI ineligible spouse and grandfathered in SSI recipients, also called MIL clients.

SSA managed the reduced program July 1, 2002 through September 30, 2002. State administration of SSP began in October 2002.

Numbers reported here represent the number of cases managed by ESA. As of January 2004, ESA added approximately 25,000 aged and blind individuals to the SSP caseload, as part of the 2004 State Plan agreement with SSA.

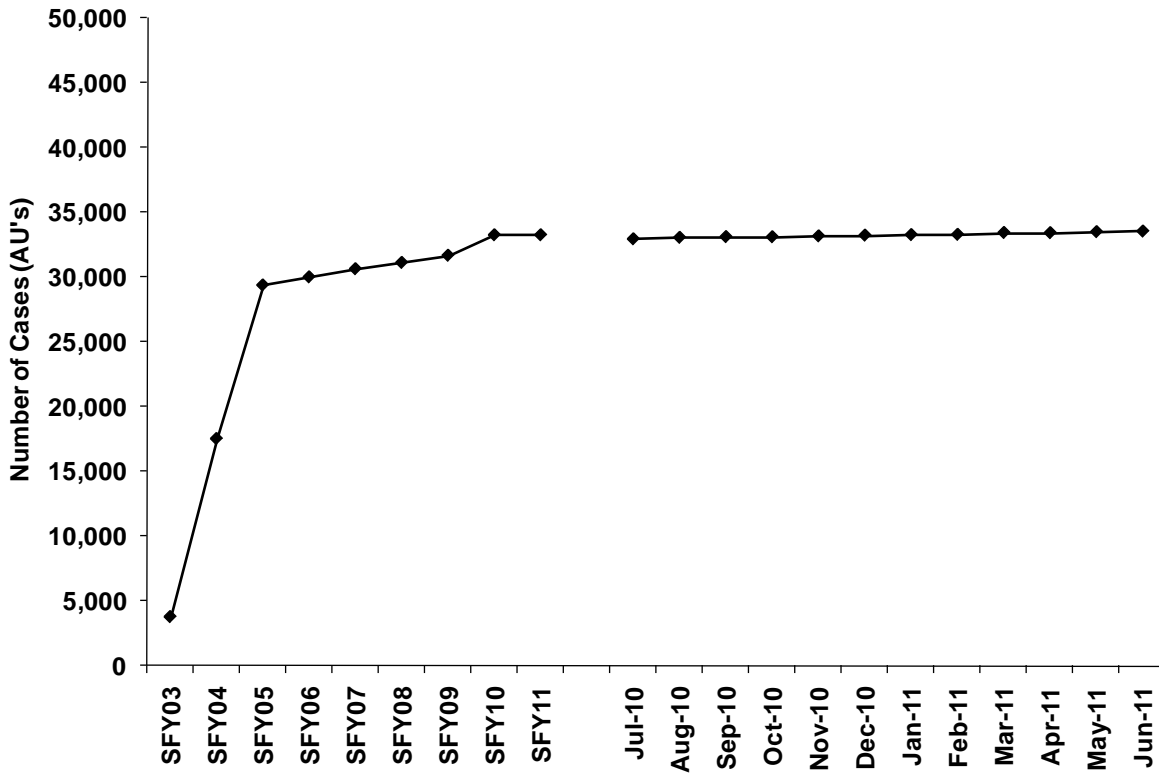
² OFM, 2011 Population Trends for Washington State

³ OFM, 2011 Population Trends for Washington State

⁴ Payments are not adjusted for refunds.

Other Programs

SSP Caseload¹ SFY 2003 - SFY 2011 Source: ESA-ACES Data



SFY 2011	Cases	Persons	Grant Expenditures	Average Payment Per Case
July	32,926	32,926	\$1,515,187.28	\$46.02
August	33,039	33,039	\$1,519,887.30	\$46.00
September	33,095	33,095	\$1,522,589.10	\$46.01
October	33,085	33,085	\$1,522,082.96	\$46.01
November	33,152	33,152	\$1,525,118.96	\$46.00
December	33,211	33,211	\$2,013,577.42	\$60.63
January	33,251	33,250	\$1,529,541.68	\$46.00
February	33,270	33,270	\$1,530,691.68	\$46.01
March	33,414	33,414	\$1,537,545.68	\$46.02
April	33,400	33,400	\$1,536,666.69	\$46.01
May	33,478	33,478	\$1,540,574.39	\$46.02
June	33,523	33,523	\$1,542,184.39	\$46.00
Mo. Avg.	33,237	33,237	\$1,569,637.29	\$47.23

¹ Please refer to note on page 37 for changes made to the SSP program. Washington State is required to expend the same amount of state supplemental monies each year. Adjustments to the SSP payment amount are made as needed to balance the SSP budget.

Other Programs

SSP Caseload by DSHS Region, CSO, and HCS Office June 2011

Source: ESA-ACES Data

	Cases		Clients	
	Number	Percent	Number	Percent
Region 1				
Access Spokane 032	759	2.3%	759	2.3%
Clarkston CSO	48	0.1%	48	0.1%
Colfax CSO	25	0.1%	25	0.1%
Colville CSO	86	0.3%	86	0.3%
Ellensburg CSO	31	0.1%	31	0.1%
Goldendale CSO	31	0.1%	31	0.1%
Kennewick CSO	354	1.1%	354	1.1%
Mattawa CSO	0	0.0%	0	0.0%
Moses Lake CSO	127	0.4%	127	0.4%
Newport CSO	42	0.1%	42	0.1%
Okanogan CSO	107	0.3%	107	0.3%
Othello CSO	34	0.1%	34	0.1%
Pomeroy Outstation	0	0.0%	0	0.0%
R2 Processing Center	0	0.0%	0	0.0%
Republic CSO	37	0.1%	37	0.1%
Sunnyside CSO	180	0.5%	180	0.5%
Walla Walla CSO	119	0.4%	119	0.4%
Wapato CSO	161	0.5%	161	0.5%
Wenatchee CSO	173	0.5%	173	0.5%
White Salmon CSO	19	0.1%	19	0.1%
Yakima CSO	319	1.0%	319	1.0%
Region Total	2,652	7.9%	2,652	7.9%
Region 2				
Alderwood CSO	431	1.3%	431	1.3%
Auburn CSO	16	0.0%	16	0.0%
Bellingham CSO	347	1.0%	347	1.0%
Belltown CSO	297	0.9%	297	0.9%
Capitol Hill CSO	337	1.0%	337	1.0%
Everett CSO	302	0.9%	302	0.9%
Federal Way CSO	444	1.3%	444	1.3%
King Eastside CSO	782	2.3%	782	2.3%
King North CSO	501	1.5%	501	1.5%
King South CSO	347	1.0%	347	1.0%
Mt Vernon CSO	186	0.6%	186	0.6%
Oak Harbor CSO	65	0.2%	65	0.2%
Rainier CSO	561	1.7%	561	1.7%
Renton CSO	424	1.3%	424	1.3%
Sky Valley CSO	93	0.3%	93	0.3%
Smokey Point CSO	156	0.5%	156	0.5%
White Center CSO	563	1.7%	563	1.7%
Region Total	5,852	17.5%	5,852	17.5%

Other Programs

SSP Caseload by DSHS Region, CSO, and HCS Office (continued) June 2011

Source: ESA-ACES Data

	Cases		Clients	
	Number	Percent	Number	Percent
Region 3				
Aberdeen CSO	141	0.4%	141	0.4%
Bremerton CSO	289	0.9%	289	0.9%
Chehalis CSO	138	0.4%	138	0.4%
Columbia River CSO	660	2.0%	660	2.0%
Forks CSO	23	0.1%	23	0.1%
Friday Harbor Outstn	0	0.0%	0	0.0%
Kelso CSO	164	0.5%	164	0.5%
Lakewood CSO	316	0.9%	316	0.9%
Long Beach CSO	40	0.1%	40	0.1%
Olympia CSO	329	1.0%	329	1.0%
Pierce North CSO	327	1.0%	327	1.0%
Pierce South CSO	454	1.4%	454	1.4%
Port Angeles CSO	68	0.2%	68	0.2%
Port Townsend CSO	34	0.1%	34	0.1%
Puyallup Valley CSO	246	0.7%	246	0.7%
Shelton CSO	82	0.2%	82	0.2%
South Bend CSO	18	0.1%	18	0.1%
Stevenson CSO	14	0.0%	14	0.0%
Region Total	3,343	10.0%	3,343	10.0%
Customer Svc Cntr	200	0.6%	200	0.6%
WASHCAP ¹	9,105	27.2%	9,105	27.2%
Medical Elig Det Svc	7	0.0%	7	0.0%

¹ The WASHCAP office is part of the Statewide Customer Service Call Center (CSC).

Other Programs

SSP Caseload by DSHS Region, CSO, and HCS Office¹ (continued)

June 2011

Source: ESA-ACES Data

	Cases		Clients	
	Number	Percent	Number	Percent
HCS Region 1				
Clarkston Hcs Office	40	0.1%	40	0.1%
Colville Hcs Office	77	0.2%	77	0.2%
Ellensburg Hcs	38	0.1%	38	0.1%
Moses Lk Hcs Office	146	0.4%	146	0.4%
Okanogan Hcs Office	59	0.2%	59	0.2%
Spokane Hcs Office	911	2.7%	911	2.7%
Sunnyside Hcs Office	70	0.2%	70	0.2%
Tri-Cities Hcs Ofc	327	1.0%	327	1.0%
Walla Walla Hcs Ofc	93	0.3%	93	0.3%
Wapato HCS	50	0.1%	50	0.1%
Wenatchee HCS Office	97	0.3%	97	0.3%
Yakima HCS Office	173	0.5%	173	0.5%
Region Total	2,081	6.2%	2,081	6.2%
HCS Region 2				
Alderwood HCS Office	375	1.1%	375	1.1%
Bellingham HCS Ofc	224	0.7%	224	0.7%
Everett HCS Office	614	1.8%	614	1.8%
Holgate HCS Office	5,355	16.0%	5,355	16.0%
Mt Vernon HCS Office	96	0.3%	96	0.3%
Oak Harbor HCS	36	0.1%	36	0.1%
Skykomish HCS Office	150	0.4%	150	0.4%
Smokey Point HCS	88	0.3%	88	0.3%
Region Total	6,938	20.7%	6,938	20.7%
HCS Region 3				
Aberdeen HCS Office	61	0.2%	61	0.2%
Bremerton HCS Office	172	0.5%	172	0.5%
Chehalis HCS Office	65	0.2%	65	0.2%
Kelso HCS	94	0.3%	94	0.3%
Lacey HCS Office	269	0.8%	269	0.8%
Pacific County HCS	51	0.2%	51	0.2%
Port Angeles HCS	87	0.3%	87	0.3%
Puyallup HCS Office	0	0.0%	0	0.0%
Tacoma HCS Office	1,452	4.3%	1,452	4.3%
Vancouver HCS	1,094	3.3%	1,094	3.3%
Region Total	3,345	10.0%	3,345	10.0%
State Total	33,523	100.0%	33,523	100.0%

¹ A number of SSP cases received services through a Home Community Service Center (HCS) administered through the Aging and Adult Services Administration. These cases are listed separately since they are not part of a Community Services Division (CSD) Community Service Office (CSO).

Other Programs

SSP Caseload by County of Residence June 2011

Source: ESA-ACES Data

County	Cases		Clients	
	Number	Percent	Number	Percent
Adams	71	0.2%	71	0.2%
Asotin	121	0.4%	121	0.4%
Benton	583	1.7%	583	1.7%
Chelan	309	0.9%	309	0.9%
Clallam	245	0.7%	245	0.7%
Clark	2,145	6.4%	2,145	6.4%
Columbia	21	0.1%	21	0.1%
Cowlitz	412	1.2%	412	1.2%
Douglas	97	0.3%	97	0.3%
Ferry	48	0.1%	48	0.1%
Franklin	313	0.9%	313	0.9%
Garfield	6	0.0%	6	0.0%
Grant	373	1.1%	373	1.1%
Grays Harbor	378	1.1%	378	1.1%
Island	159	0.5%	159	0.5%
Jefferson	96	0.3%	96	0.3%
King	13,031	38.9%	13,031	38.9%
Kitsap	716	2.1%	716	2.1%
Kittitas	72	0.2%	72	0.2%
Klickitat	102	0.3%	102	0.3%
Lewis	331	1.0%	331	1.0%
Lincoln	25	0.1%	25	0.1%
Mason	193	0.6%	193	0.6%
Okanogan	241	0.7%	241	0.7%
Pacific	136	0.4%	136	0.4%
Pend Oreille	83	0.2%	83	0.2%
Pierce	3,810	11.4%	3,810	11.4%
San Juan	17	0.1%	17	0.1%
Skagit	414	1.2%	414	1.2%
Skamania	40	0.1%	40	0.1%
Snohomish	3,013	9.0%	3,013	9.0%
Spokane	2,213	6.6%	2,213	6.6%
Stevens	222	0.7%	222	0.7%
Thurston	821	2.4%	821	2.4%
Wahkiakum	12	0.0%	12	0.0%
Walla Walla	272	0.8%	272	0.8%
Whatcom	870	2.6%	870	2.6%
Whitman	68	0.2%	68	0.2%
Yakima	1,444	4.3%	1,444	4.3%
State Total	33,523	100.0%	33,523	100.0%

Other Programs

SSP Client Demographics

June 2011

Source: ESA-ACES Data

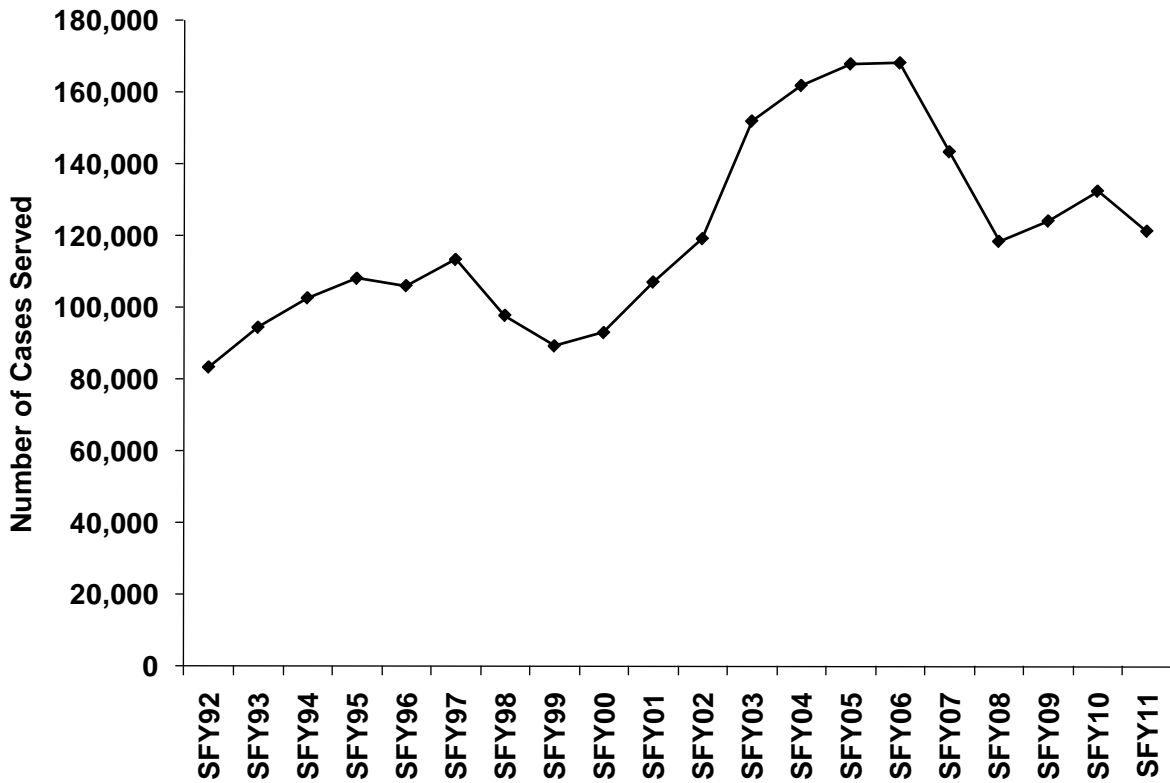
Characteristic	All Clients/Adults	
	Number	Percent
TOTAL	33,523	100.0%
Gender		
Female	21,659	64.50%
Male	11,864	35.50%
Race		
White	15,522	46.3%
Hispanic	2,676	8.0%
Black	1,444	4.3%
Asian/Pacific Islander	8,364	25.0%
Native American	637	1.9%
Unknown	4,880	14.6%
Marital Status (Adults Only)		
Separated	2,551	7.6%
Married	11,595	34.6%
Never Married	6,138	18.3%
Divorced	5,139	15.3%
Widow	6,887	20.5%
Unknown	1,213	3.6%
Citizenship¹		
U.S. Citizen	25,020	74.6%
Resident Alien	8,389	25.0%
U.S. National	114	0.3%
Age		
1 – 5 Years Old	13	0.0%
6 – 10 Years Old	10	0.0%
11 – 15 Years Old	21	0.1%
16 – 17 Years Old	7	0.0%
18 – 20 Years Old	58	0.2%
21 – 29 Years Old	319	1.0%
30 – 39 Years Old	558	1.7%
40 – 49 Years Old	739	2.2%
50 – 55 Years Old	699	2.1%
56 – 59 Years Old	508	1.5%
60 – 64 Years Old	627	1.9%
65+ Years Old	29,964	89.4%
Mean Age of Adults	72.1 Years Old	
Median Age of Adults	73.0 Years Old	

¹ See Refugee/Immigrant section, page 24 for glossary of Citizenship terms.

Other Programs

WTAP Caseload SFY 1992 to SFY 2011

Source: Information System Services Division (ISSD)



<u>SFY</u>	<u>Cases Served</u>
1992	83,509
1993	94,577
1994	102,765
1995	108,193
1996	106,145
1997	113,450
1998	97,888
1999	89,384
2000	93,078
2001	107,159
2002	119,238
2003	151,972
2004	161,884
2005	167,884
2006	168,164
2007	143,419
2008	118,486
2009	124,146
2010	132,450
2011	121,295

Other Programs

WTAP Caseload By County of Residence¹ SFY 2011

Source: Information System Services Division (ISSD)

County	Number of Cases Participating	Number of Cases Eligible	Percent ² Participating
Adams	542	2,475	21.90%
Asotin	652	4,075	16.00%
Benton	3,848	31,155	12.35%
Chelan	1,827	14,623	12.49%
Ciallam	1,914	11,007	17.39%
Clark	7,480	59,268	12.62%
Columbia	0	0	0.00%
Cowlitz	2,987	19,777	15.10%
Ferry	458	1,978	23.15%
Franklin	0	2	0.00%
Garfield	0	0	0.00%
Grant	2,205	13,972	15.78%
Grays Harbor	1,981	14,157	13.99%
Island	530	5,872	9.03%
Jefferson	804	4,169	19.29%
King	30,536	211,392	14.45%
Kitsap	3,862	29,460	13.11%
Kittitas	258	5,261	4.90%
Klickitat	377	3,539	10.65%
Lewis	2,564	14,783	17.34%
Mason	1,504	9,284	16.20%
Okanogan	1,673	8,616	19.42%
Pacific	536	3,811	14.06%
Pend Oreille	510	2,423	21.05%
Pierce	13,416	113,646	11.81%
Skagit	2,353	20,329	11.57%
Skamania	28	1,224	2.29%
Snohomish	8,291	81,265	10.20%
Spokane	12,347	78,826	15.66%
Stevens	1,824	6,661	27.38%
Thurston	4,197	32,863	12.77%
Walla Walla	1,362	8,812	15.46%
Whatcom	3,966	29,606	13.40%
Whitman	417	3,884	10.74%
Yakima	6,045	47,467	12.74%
Unknown	1	17	5.88%
State Total	121,295	895,699	13.54%

¹ No data is available for Douglas, Lincoln, San Juan and Wahkiakum counties because the CSOs in those counties were closed for the reporting period.

² Percents are calculated as the number participating divided by the number eligible within each county.