

TANF/WorkFirst Program

	PAGE
TANF and WorkFirst Highlights.....	1
Selected TANF/SFA Program Characteristics, SFY 2010 and SFY 2011	2
TANF/SFA Caseload, SFY 2002 through SFY 2011	3
TANF/SFA Caseload by Type, SFY 2011.....	4
TANF/SFA Caseload by DSHS Region and CSO, June 2011.....	5
TANF/SFA Caseload by County of Residence, June 2011.....	7
Client Density Maps, June 2011	8
TANF/SFA Caseload by Child Only & Number of Adults, SFY 2002 through SFY 2011.....	9
TANF/SFA Child Only Caseload by Major Caretaker Groups, June 2011	10
TANF/SFA Caseload by Number of Children, SFY 2002 through SFY 2011.....	11
TANF/SFA Caseload with Teen Head of Household, SFY 2002 through SFY 2011	12
Teen Parents under Age 18, SFY 2002 through SFY 2011.....	13
TANF/SFA Caseload with Pregnant Women and Children 12 Months or Younger, SFY 2002 through SFY 2011.....	14
Employed TANF/SFA Adults, SFY 2002 through SFY 2011.....	15
TANF/SFA Adults Receiving Quarterly Wages, SFY 2004 through SFY 2011	16
TANF/SFA Cases With Adults in WorkFirst Sanction Status, SFY 2011	17
TANF/SFA Caseload by Primary Language, June 2011.....	18
TANF/SFA Client Demographics, June 2011	19
TANF/SFA Child Demographics, June 2011	20

TANF and WorkFirst

TANF/WorkFirst Program

This section summarizes the Temporary Assistance for Needy Families (TANF) and WorkFirst caseload for SFY 2011. Unless otherwise noted, both federally funded TANF and state-funded State Family Assistance (SFA) cases are reported in this section.

In February 2011, Washington State modified its time limit extension criteria to limit the number of families that qualified for an extension beyond 60 months. In addition, a 15% grant reduction was imposed.

Highlights:

- Washington State's TANF/SFA average monthly caseload increased 1.1% to 65,127 in SFY 2011 from a monthly average of 64,448 in SFY 2010.
- The average payment per case in SFY 2011 was \$418.25 which is \$31.09 less than the average in SFY 2010 of \$449.34.
- Child Only cases slightly increased to an average of 37.2% of the total TANF caseload in SFY2011, compared to 36.3% in SFY2010.
- The average monthly proportion of one-adult cases was slightly lower in SFY 2011 (52.6%) compared to SFY 2010 (53.5%).
- Two-adult cases slightly increased to an average of 10.2% of the TANF caseload in SFY 2011 compared to 10.1% in SFY 2010.
- An average of 5,044 (10.6%) TANF/SFA clients were employed each month in SFY 2011, compared to 5,263 (11.1%) TANF/SFA clients employed each month in SFY 2010.
- The average monthly proportion of TANF cases with adults in sanction status was 8.0% in SFY 2011, compared to 7.0% in SFY 2010.
- In June 2011, the demographics of the adult TANF clients were:
 - 78.1 % Female
 - 57.4 % White
 - 57.9 % Never Married
 - Median age was 28.0 years.

TANF/WorkFirst Program

Selected TANF/SFA Program Characteristics SFY 2010 and SFY 2011

Source: ESA-ACES Data

	SFY 2010 (July 2009 – June 2010)	SFY 2011 (July 2010 – June 2011)
Average Number of Cases Per Month (Range)	64,448 (60,749 – 66,619)	65,127 (58,761 – 70,318)
Average Number of Persons Per Month (Range)	156,329 (146,884 – 161,397)	156,147 (137,123 – 171,106)
Average Number of Adults Per Month (Range)	47,545 (44,864 – 48,871)	47,562 (41,044 – 52,070)
Average Number of Children Per Month (Range)	108,785 (102,201 – 112,526)	108,585 (96,079 – 119,037)
Recipients as a Percent of State's Total Population	2.3%	2.3%
State Population¹	6,733,250	6,767,900
Children as a Percent of Recipients	69.6%	69.5%
Average Persons Per Case	2.4	2.4
Average Children Per Case	1.7	1.7
Average Children Per Adult	2.3	2.3
Average Monthly Payment Per Case (Range)²	\$449.34 (\$447.05 – \$451.30)	\$418.25 (\$370.24 – \$452.12)

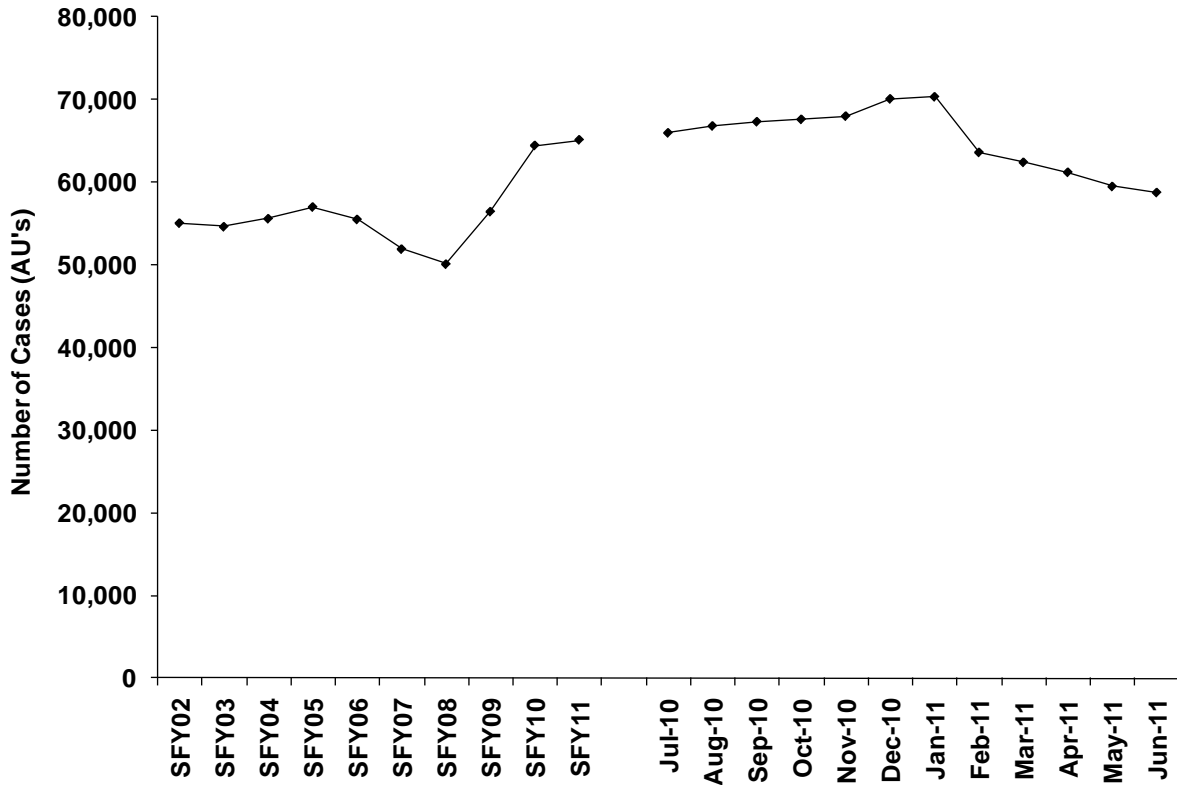
¹ OFM, 2011 Population Trends for Washington State

² Payments are not adjusted for refunds.

TANF/WorkFirst Program

TANF/SFA Caseload¹ SFY 2002 - SFY 2011

Source: ESA-ACES Data



Year	Cases	Year	Cases
SFY02	55,068	SFY07	51,933
SFY03	54,631	SFY08	50,116
SFY04	55,600	SFY09	56,456
SFY05	57,014	SFY10	64,448
SFY06	55,514	SFY11	65,127

SFY 2011	Cases	Persons	Grant Expenditures	Avg. Payment Per Case
July	65,966	159,737	\$29,824,625.48	\$452.12
August	66,800	162,437	\$30,196,755.75	\$452.05
September	67,309	163,604	\$30,306,894.07	\$450.27
October	67,598	164,496	\$30,166,248.46	\$446.26
November	67,984	165,471	\$30,185,074.17	\$444.00
December	70,066	170,701	\$31,126,433.59	\$444.24
January	70,318	171,106	\$31,174,432.86	\$443.34
February	63,610	149,859	\$23,966,874.23	\$376.78
March	62,410	146,860	\$23,254,337.37	\$372.61
April	61,208	143,249	\$22,847,554.70	\$373.28
May	59,490	139,117	\$22,064,520.39	\$370.89
June	58,761	137,123	\$21,755,487.53	\$370.24
Mo. Avg.	65,127	156,147	\$27,239,103.22	\$418.25

¹ The state imposed a stricter time limit extension criteria and a 15% grant reduction effective February 1, 2011.

TANF/WorkFirst Program

TANF/SFA Caseload Receiving Federal TANF only, Mixed Federal and SFA¹, and SFA only SFY 2011

Source: ESA-ACES Data

SFY 2011	TOTAL Caseload Number ²	Federal TANF ONLY		Mixed Federal TANF & SFA		SFA ONLY	
		Number	Percent	Number	Percent	Number	Percent
July	65,966	64,613	97.9%	912	1.4%	478	0.7%
August	66,800	65,422	97.9%	939	1.4%	473	0.7%
September	67,309	65,913	97.9%	961	1.4%	476	0.7%
October	67,598	66,195	97.9%	962	1.4%	483	0.7%
November	67,984	66,522	97.8%	996	1.5%	512	0.8%
December	70,066	68,474	97.7%	1,090	1.6%	548	0.8%
January	70,318	68,676	97.7%	1,129	1.6%	557	0.8%
February	63,610	62,029	97.5%	1,073	1.7%	560	0.9%
March	62,410	60,834	97.5%	1,047	1.7%	573	0.9%
April	61,208	59,680	97.5%	984	1.6%	580	0.9%
May	59,490	57,998	97.5%	947	1.6%	580	1.0%
June	58,761	57,236	97.4%	965	1.6%	585	1.0%
Mo. Avg.	65,127	63,633	97.7%	1,000	1.5%	534	0.8%

SFY 2011	SFA Caseload	State Expenditures on SFA Cases	Avg. State Expenditures Per Case
July	1,390	\$414,086.79	\$297.90
August	1,412	\$416,689.06	\$295.11
September	1,437	\$428,517.73	\$298.20
October	1,445	\$426,833.50	\$295.39
November	1,508	\$442,956.16	\$293.74
December	1,638	\$474,696.02	\$289.80
January	1,686	\$488,994.72	\$290.03
February	1,633	\$413,099.09	\$252.97
March	1,620	\$408,144.44	\$251.94
April	1,564	\$400,083.45	\$255.81
May	1,527	\$388,427.13	\$254.37
June	1,550	\$396,842.79	\$256.03
Mo. Avg.	1,534	\$424,948.00	\$277.02

¹ SFA is the State Family Assistance for legal immigrants and others ineligible for TANF. Some households have a member receiving federal TANF and a member receiving family assistance through the state; these cases are considered mixed federal TANF and SFA cases and are rolled into the combined SFA-only caseload (SFA Only + Mixed Federal TANF/SFA Caseload) number.

² Program detail may not sum to totals because cases may be in more than one program during the month.

TANF/WorkFirst Program

TANF/SFA Caseload by DSHS Region and CSO

June 2011

Source: ESA-ACES Data

	Cases		Clients	
	Number	Percent	Number	Percent
Region 1				
Access Spokane 032	4,684	8.0%	11,007	8.0%
Clarkston CSO	246	0.4%	575	0.4%
Colfax CSO	140	0.2%	314	0.2%
Colville CSO	411	0.7%	940	0.7%
Ellensburg CSO	274	0.5%	684	0.5%
Goldendale CSO	150	0.3%	366	0.3%
Kennewick CSO	2,727	4.6%	6,452	4.7%
Mattawa CSO	0	0.0%	0	0.0%
Moses Lake CSO	1,264	2.2%	2,984	2.2%
Newport CSO	160	0.3%	409	0.3%
Okanogan CSO	436	0.7%	936	0.7%
Othello CSO	282	0.5%	694	0.5%
Pomeroy Outstation	4	0.0%	7	0.0%
R2 Processing Center	11	0.0%	25	0.0%
Republic CSO	74	0.1%	148	0.1%
Sunnyside CSO	1,378	2.3%	3,362	2.5%
Walla Walla CSO	513	0.9%	1,196	0.9%
Wapato CSO	1,009	1.7%	2,233	1.6%
Wenatchee CSO	997	1.7%	2,316	1.7%
White Salmon CSO	56	0.1%	123	0.1%
Yakima CSO	2,436	4.1%	5,565	4.1%
Region Total	17,252	29.4%	40,336	29.4%
Region 2				
Alderwood CSO	960	1.6%	2,145	1.6%
Auburn CSO	1,240	2.1%	3,131	2.3%
Bellingham CSO	1,397	2.4%	3,124	2.3%
Belltown CSO	297	0.5%	696	0.5%
Capitol Hill CSO	597	1.0%	1,447	1.1%
Everett CSO	1,956	3.3%	4,746	3.5%
Federal Way CSO	1,358	2.3%	3,223	2.4%
King Eastside CSO	1,116	1.9%	2,583	1.9%
King North CSO	891	1.5%	2,091	1.5%
King South CSO	1,961	3.3%	5,179	3.8%
Mt Vernon CSO	1,234	2.1%	2,797	2.0%
Oak Harbor CSO	263	0.4%	572	0.4%
Rainier CSO	1,231	2.1%	3,076	2.2%
Renton CSO	1,366	2.3%	3,214	2.3%
Sky Valley CSO	501	0.9%	1,144	0.8%
Smokey Point CSO	1,139	1.9%	2,645	1.9%
Walla Walla-Columbia	0	0.0%	0	0.0%
White Center CSO	2,282	3.9%	5,564	4.1%
Region Total	19,789	33.7%	47,377	34.6%

TANF/WorkFirst Program

TANF/SFA Caseload by DSHS Region and CSO (continued)
June 2011

Source: ESA-ACES Data

	Cases		Clients	
	Number	Percent	Number	Percent
Region 3				
Aberdeen CSO	1,057	1.8%	2,203	1.6%
Bremerton CSO	1,606	2.7%	3,473	2.5%
Chehalis CSO	1,021	1.7%	2,224	1.6%
Columbia River CSO	3,779	6.4%	8,907	6.5%
Forks CSO	192	0.3%	421	0.3%
Friday Harbor Outstation	0	0.0%	0	0.0%
Kelso CSO	1,625	2.8%	3,644	2.7%
Lakewood CSO	2,658	4.5%	6,252	4.6%
Long Beach CSO	93	0.2%	178	0.1%
Olympia CSO	1,974	3.4%	4,386	3.2%
Pierce North CSO	1,551	2.6%	3,589	2.6%
Pierce South CSO	2,455	4.2%	5,920	4.3%
Port Angeles CSO	409	0.7%	843	0.6%
Port Townsend CSO	156	0.3%	344	0.3%
Puyallup Valley CSO	2,020	3.4%	4,563	3.3%
Shelton CSO	802	1.4%	1,769	1.3%
South Bend CSO	134	0.2%	283	0.2%
Stevenson CSO	72	0.1%	179	0.1%
Region Total	21,604	36.8%	49,178	35.9%
Customer Service Center	115	0.2%	230	0.2%
WASHCAP	1	0.0%	2	0.0%
State Total	58,761	100.0%	137,123	100.0%

TANF/WorkFirst Program

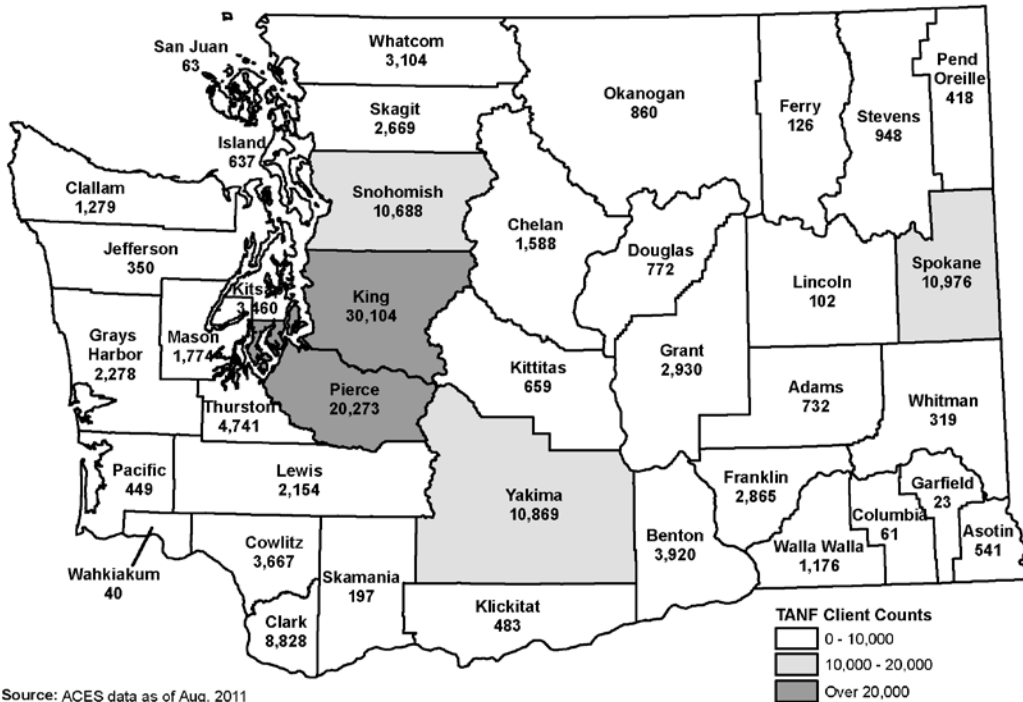
TANF/SFA Caseload by County of Residence
June 2011

Source: ESA-ACES Data

	Cases		Clients	
	Number	Percent	Number	Percent
Adams	308	0.5%	732	0.5%
Asotin	232	0.4%	541	0.4%
Benton	1,672	2.8%	3,920	2.9%
Chelan	692	1.2%	1,588	1.2%
Clallam	608	1.0%	1,279	0.9%
Clark	3,748	6.4%	8,828	6.4%
Columbia	26	0.0%	61	0.0%
Cowlitz	1,630	2.8%	3,667	2.7%
Douglas	328	0.6%	772	0.6%
Ferry	60	0.1%	126	0.1%
Franklin	1,206	2.1%	2,865	2.1%
Garfield	11	0.0%	23	0.0%
Grant	1,242	2.1%	2,930	2.1%
Grays Harbor	1,100	1.9%	2,278	1.7%
Island	300	0.5%	637	0.5%
Jefferson	156	0.3%	350	0.3%
King	12,310	20.9%	30,104	22.0%
Kitsap	1,606	2.7%	3,460	2.5%
Kittitas	266	0.5%	659	0.5%
Klickitat	203	0.3%	483	0.4%
Lewis	987	1.7%	2,154	1.6%
Lincoln	46	0.1%	102	0.1%
Mason	801	1.4%	1,774	1.3%
Okanogan	405	0.7%	860	0.6%
Pacific	221	0.4%	449	0.3%
Pend Oreille	166	0.3%	418	0.3%
Pierce	8,665	14.7%	20,273	14.8%
San Juan	33	0.1%	63	0.0%
Skagit	1,162	2.0%	2,669	1.9%
Skamania	77	0.1%	197	0.1%
Snohomish	4,559	7.8%	10,688	7.8%
Spokane	4,668	7.9%	10,976	8.0%
Stevens	411	0.7%	948	0.7%
Thurston	2,103	3.6%	4,741	3.5%
Wahkiakum	22	0.0%	40	0.0%
Walla Walla	506	0.9%	1,176	0.9%
Whatcom	1,392	2.4%	3,104	2.3%
Whitman	143	0.2%	319	0.2%
Yakima	4,690	8.0%	10,869	7.9%
State Total	58,761	100.0%	137,123	100.0%

TANF/WorkFirst Program

Number of TANF Clients by Residential County in Washington State: June 2011

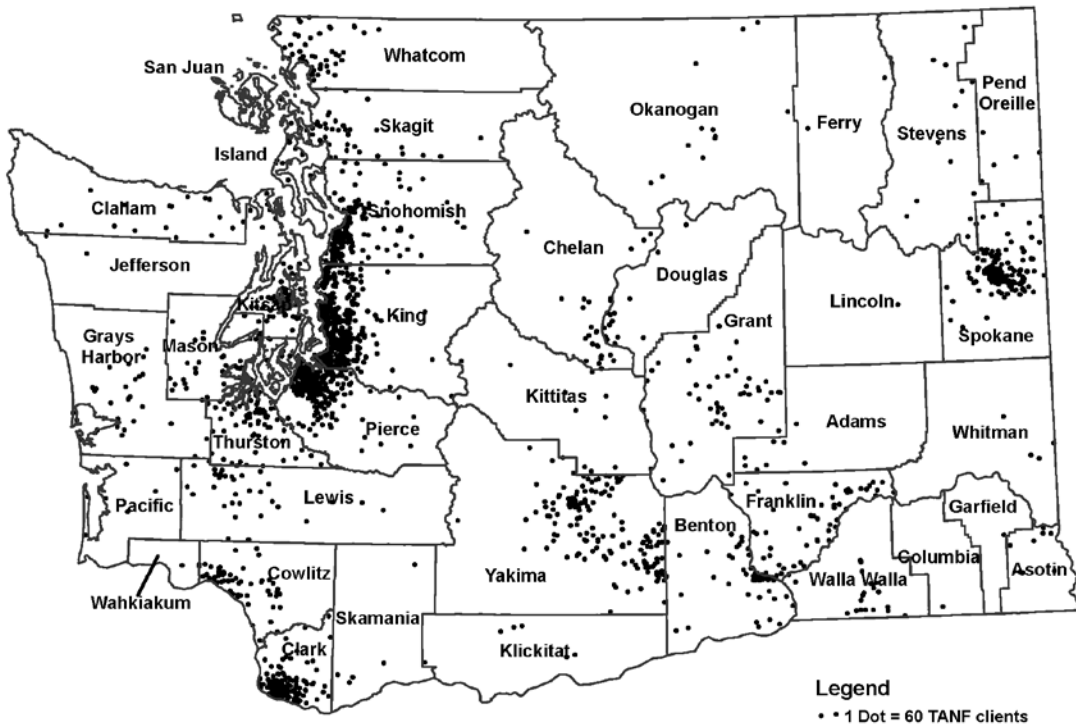


Source: ACES data as of Aug. 2011

Note: If a client is found to be in more than one county during the month (due to transition), then the client would be counted in each county they are found in.

Provided by DSHS/ESA/OAS/E-MAPS - Sep. 2011

Number of TANF Clients by Density of Residential Zip Code in Washington State: June 2011



Source: ACES data as of Sep. 2011

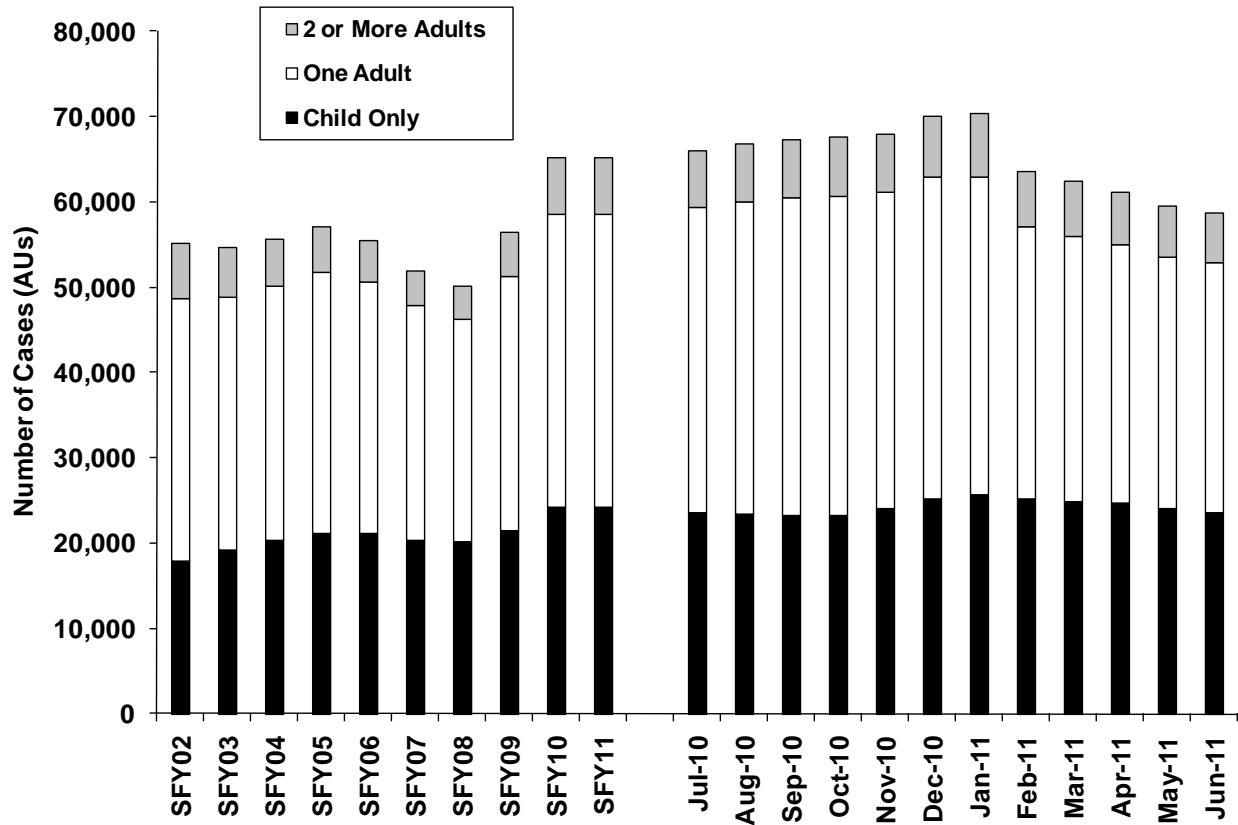
Note: If a client is found to be in more than one zip area during the month (due to transition), then the client would be counted in each zip area they are found in.

Provided by DSHS/ESA/OAS/E-MAPS - Sep. 2011

TANF/WorkFirst Program

TANF/SFA Caseload Child Only & by Number of Adults SFY 2002 – SFY 2011

Source: ESA-ACES Data

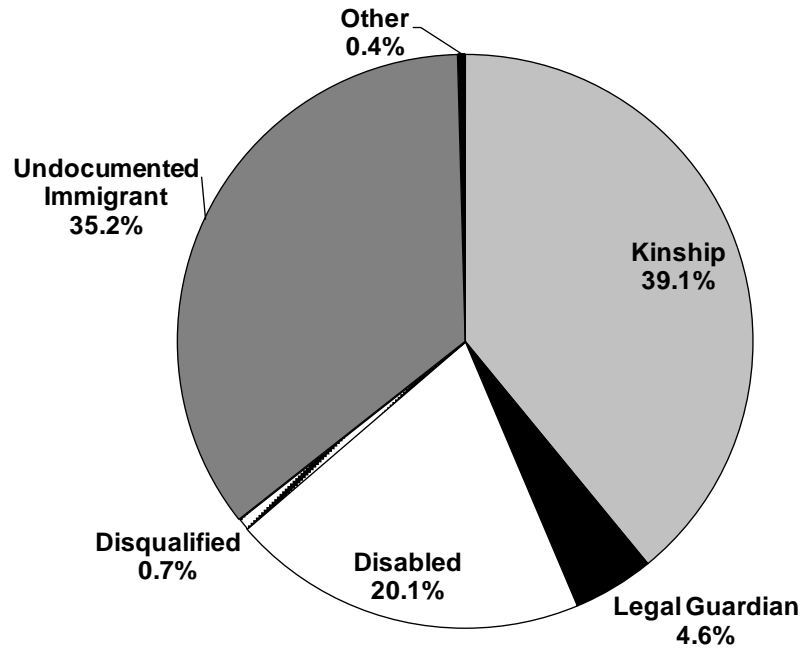


SFY 2011	Total Caseload	Child-Only Number	Child-Only Percent	1 Adult Number	1 Adult Percent	2 or More Adults Number	2 or More Adults Percent
July	65,966	23,491	35.6%	35,853	54.4%	6,622	10.0%
August	66,800	23,352	35.0%	36,629	54.8%	6,819	10.2%
September	67,309	23,293	34.6%	37,143	55.2%	6,873	10.2%
October	67,598	23,170	34.3%	37,488	55.5%	6,940	10.3%
November	67,984	23,985	35.3%	37,074	54.5%	6,925	10.2%
December	70,066	25,252	36.0%	37,608	53.7%	7,206	10.3%
January	70,318	25,588	36.4%	37,379	53.2%	7,351	10.5%
February	63,610	25,187	39.6%	31,851	50.1%	6,572	10.3%
March	62,410	24,886	39.9%	31,064	49.8%	6,460	10.4%
April	61,208	24,644	40.3%	30,365	49.6%	6,199	10.1%
May	59,490	23,972	40.3%	29,528	49.6%	5,990	10.1%
June	58,761	23,544	40.1%	29,381	50.0%	5,836	9.9%
Mo. Avg.	65,127	24,197	37.2%	34,280	52.6%	6,649	10.2%

TANF/WorkFirst Program

TANF/SFA Child Only Caseload by Major Caretaker Groups June 2011

Source: ESA-ACES Data



Caretaker	Cases	Percent
Kinship¹	9,197	39.1%
Undocumented Immigrant²	8,287	35.2%
Disabled³	4,729	20.1%
Legal Guardian⁴	1,074	4.6%
Disqualified⁵	158	0.7%
Other⁶	99	0.4%
Total Child Only Cases	23,544	100%

¹ Some parents are unable to care for their children due to their own substance abuse, mental health, or other problems. Often, grandparents or other relatives step in to provide the needed care, even though they have no legal responsibility to do so. Unless these relative caregivers are willing and able to get licensed as foster parents (a much more expensive program for the state), a TANF child-only grant may be the only way they can afford to care for these children. As long as the child has no income or assets of their own that would disqualify them, the relative caregiver can receive TANF on the child's behalf. Relative caregivers need not have legal custody of the child to receive TANF. They need only show that the child lives with them most of the time and that they are currently the child's primary caregiver.

² Children in households headed by undocumented immigrants may be U.S. citizens and therefore eligible for TANF benefits if the household, including non-recipient adults, meets financial eligibility criteria. Undocumented immigrant parents may apply for TANF on behalf of their citizen children, but they receive no continuing benefits (cash, food, or medical) for themselves.

³ Disabled parents who receive Supplemental Security Income (SSI) will not qualify for TANF because federal law does not allow them to receive both. Their minor children will still be eligible for TANF, as long as the household meets financial eligibility criteria.

⁴ Sometimes, in the absence of the parent, a relative or other concerned adult will seek legal guardianship of a child. As with relative caregivers without this legal status, guardians may receive TANF on behalf of an otherwise eligible child.

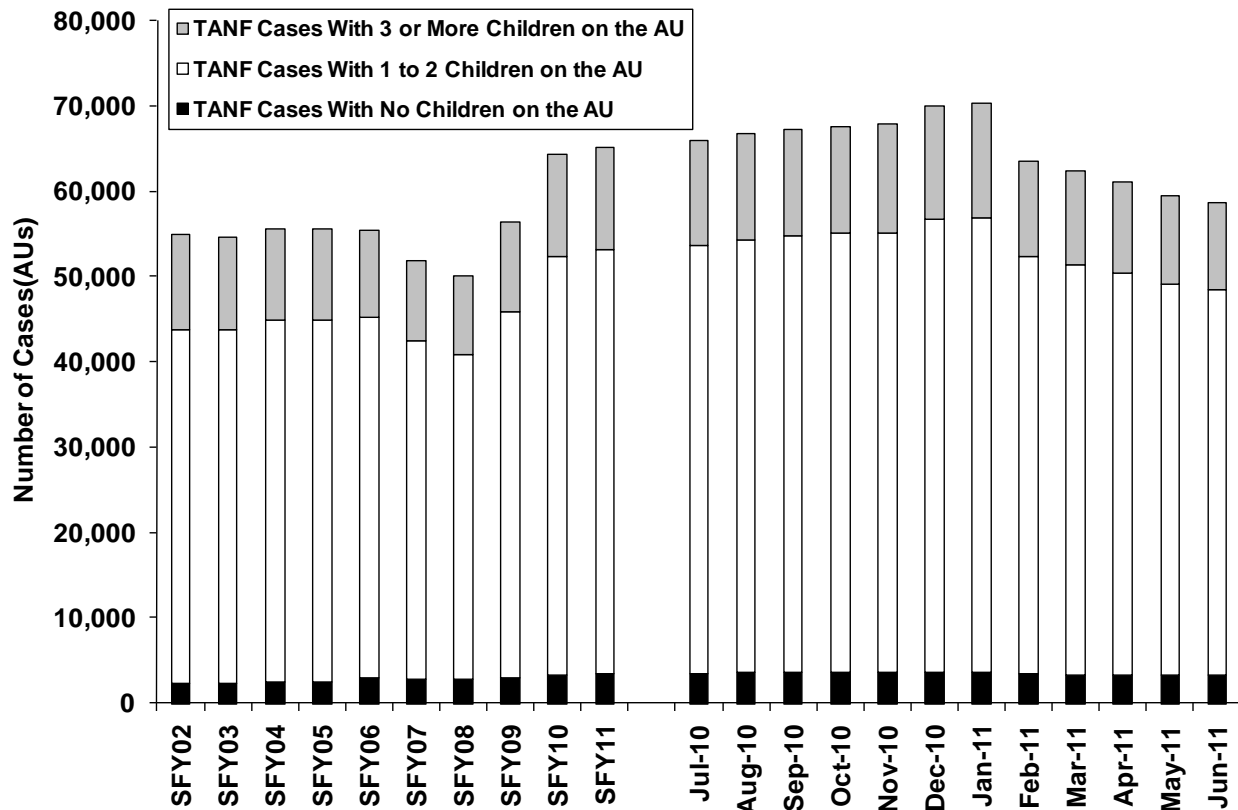
⁵ Some parents may be disqualified from receiving TANF because of fleeing a felony conviction, a probation or parole violation, or fraudulent receipt of public assistance. Their minor children will still be eligible for TANF, as long as the household meets financial eligibility criteria. Fleeing felons and probation or parole violators can restore their TANF eligibility by complying with the law. The court determines the period of ineligibility for those convicted of fraud.

⁶ Caretaker is defined using the child's relationship to the head of household member. Other cases are those in which it is unknown if the head of household is either disabled, disqualified, or an undocumented immigrant.

TANF/WorkFirst Program

TANF/SFA Caseload by Number of Children¹ SFY 2002 - SFY 2011

Source: ESA-ACES Data

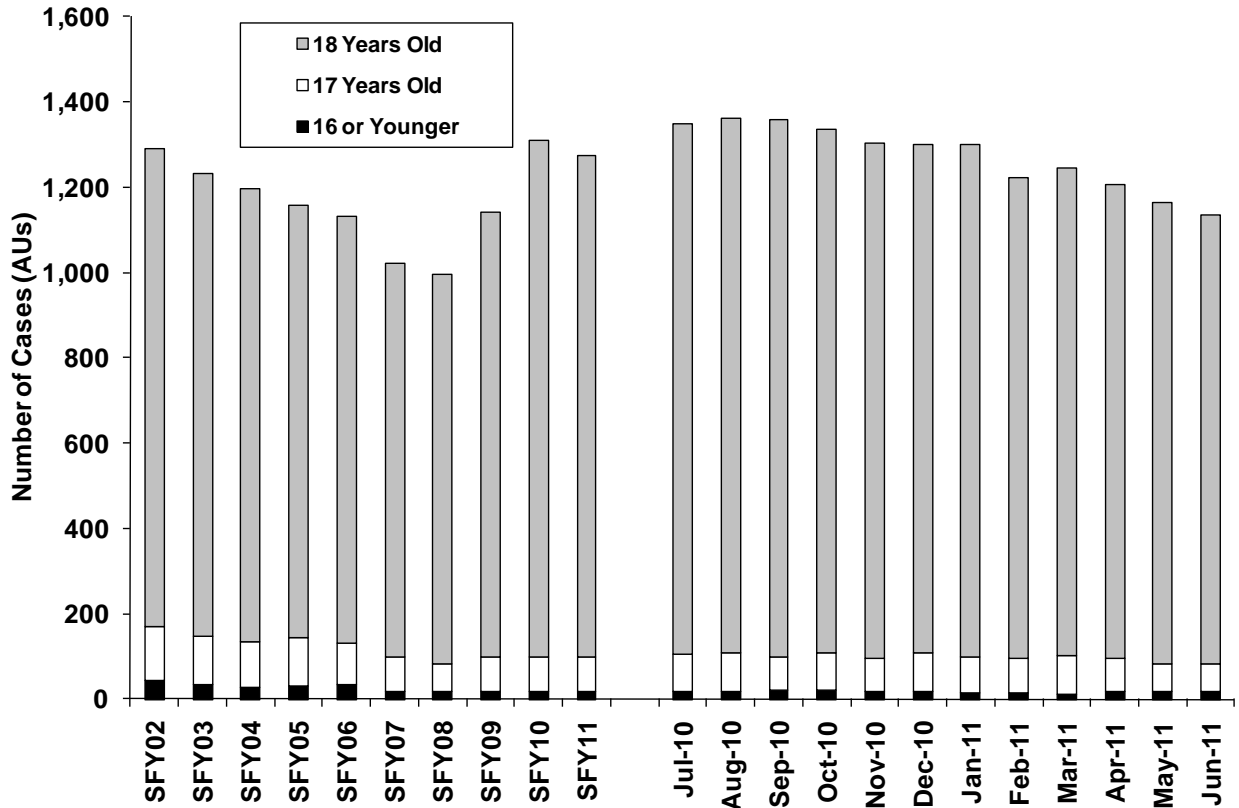


SFY 2011	Total Caseload	No Children Number	No Children Percent	1 to 2 Children Number	1 to 2 Children Percent	3 or More Children Number	3 or More Children Percent
July	65,966	3,561	5.4%	50,155	76.0%	12,250	18.6%
August	66,800	3,649	5.5%	50,638	75.8%	12,513	18.7%
September	67,309	3,724	5.5%	51,112	75.9%	12,473	18.5%
October	67,598	3,709	5.5%	51,381	76.0%	12,508	18.5%
November	67,984	3,674	5.4%	51,506	75.8%	12,804	18.8%
December	70,066	3,706	5.3%	53,010	75.7%	13,350	19.1%
January	70,318	3,723	5.3%	53,224	75.7%	13,371	19.0%
February	63,610	3,487	5.5%	48,852	76.8%	11,271	17.7%
March	62,410	3,379	5.4%	47,982	76.9%	11,049	17.7%
April	61,208	3,380	5.5%	47,088	76.9%	10,740	17.5%
May	59,490	3,300	5.5%	45,775	76.9%	10,415	17.5%
June	58,761	3,332	5.7%	45,193	76.9%	10,236	17.4%
Mo. Avg.	65,127	3,552	5.5%	49,660	76.3%	11,915	18.3%

¹ In cases in which the only children eligible for TANF already receive SSI, those children will not receive a TANF payment but the parents do receive a TANF payment. Also, pregnant women with no children are eligible for TANF.

TANF/WorkFirst Program

TANF/SFA Caseload with Teen Head of Household¹ SFY 2002 - SFY 2011 Source: ESA-ACES Data



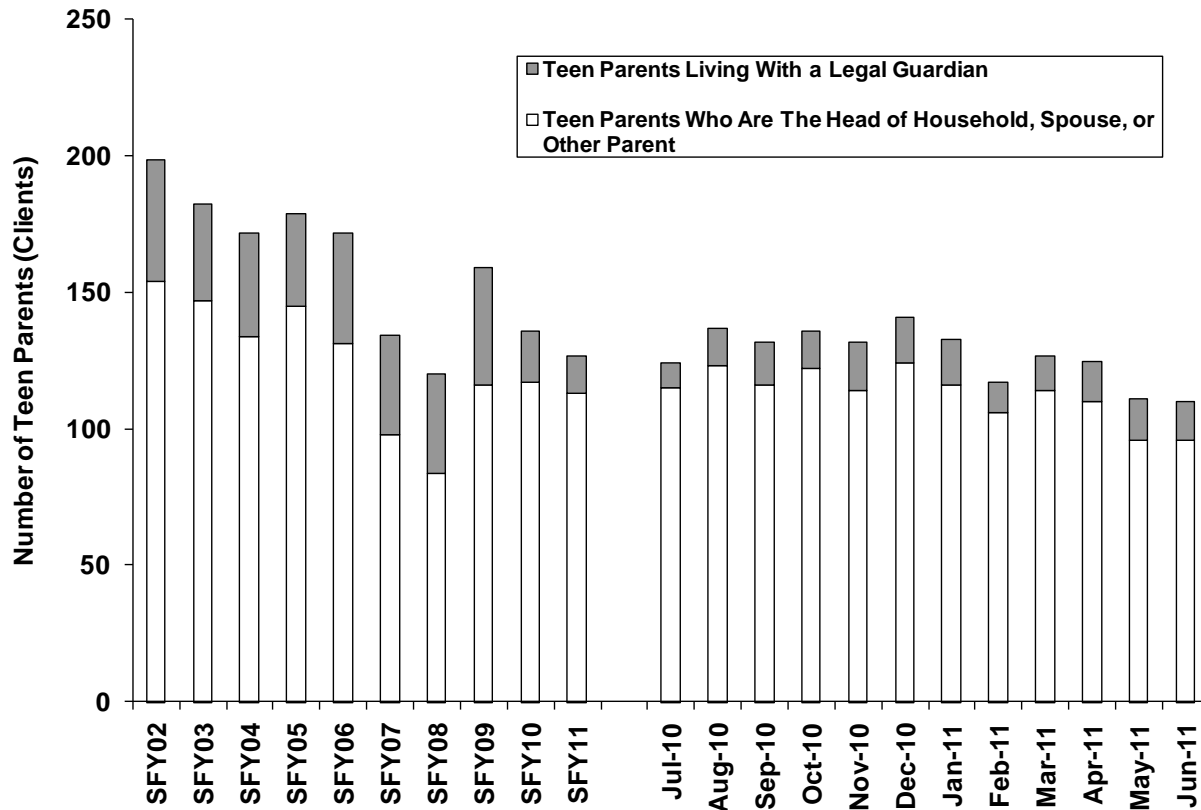
SFY 2011	Adult Caseload	Head of Household is 16 Years Old or Less		Head of Household is 17 Years Old		Head of Household is 18 Years Old	
		Number	Percent	Number	Percent	Number	Percent
July	42,475	18	0.0%	88	0.2%	1,243	2.9%
August	43,448	19	0.0%	90	0.2%	1,253	2.9%
September	44,016	21	0.0%	79	0.2%	1,258	2.9%
October	44,428	22	0.0%	86	0.2%	1,229	2.8%
November	43,999	17	0.0%	79	0.2%	1,209	2.7%
December	44,814	18	0.0%	89	0.2%	1,193	2.7%
January	44,730	14	0.0%	85	0.2%	1,201	2.7%
February	38,423	14	0.0%	81	0.2%	1,129	2.9%
March	37,524	12	0.0%	89	0.2%	1,144	3.0%
April	36,564	18	0.0%	77	0.2%	1,112	3.0%
May	35,518	19	0.1%	62	0.2%	1,082	3.0%
June	35,217	19	0.1%	63	0.2%	1,053	3.0%
Mo. Avg.	40,930	18	0.0%	81	0.2%	1,176	3.0%

¹ Numbers reflect households where the head of household member is a teen parent living independently from their formal legal guardian.

TANF/WorkFirst Program

Teen Parents¹ under Age 18 SFY 2002 - SFY 2011

Source: ESA-ACES Data



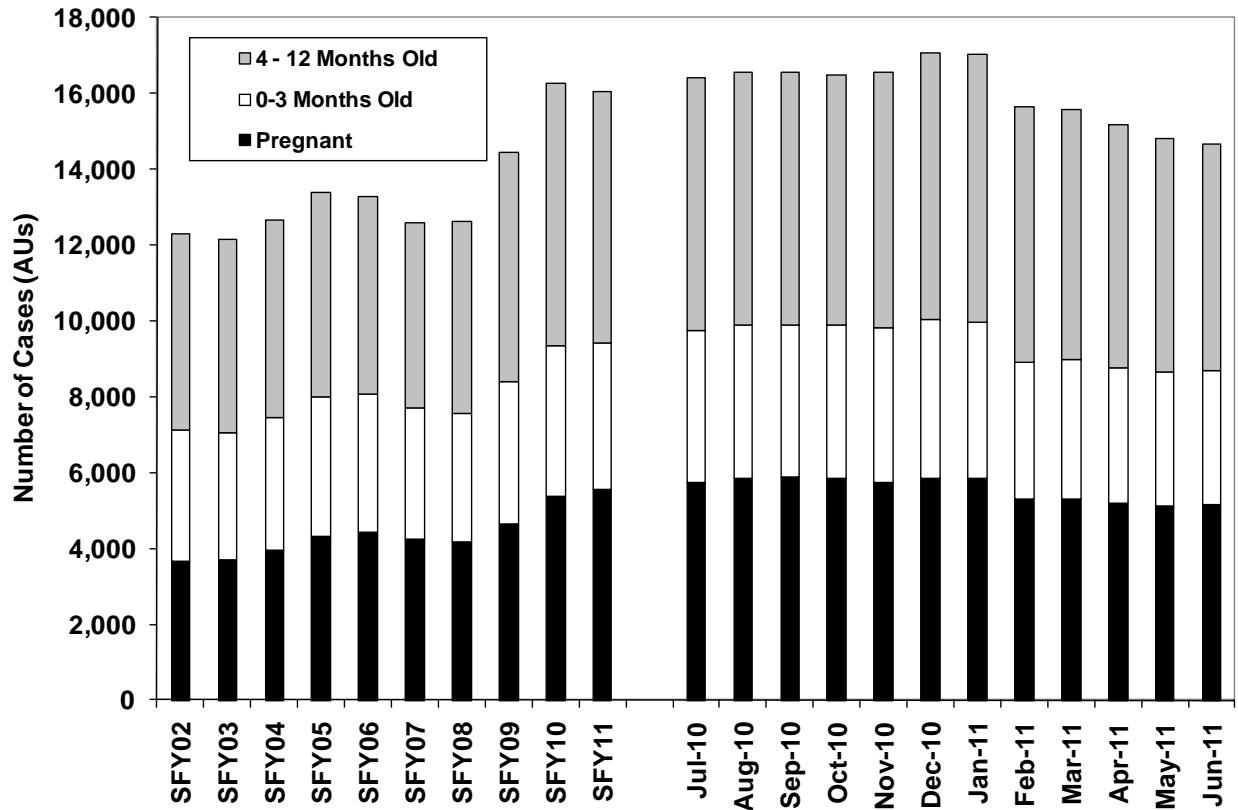
SFY 2011	Total Teen Parents Under Age 18	Teen Parents Living With a Legal Guardian		Teen Parents Under 18 who are the Head of Household, Spouse, or Other Parent	
		Number	Percent	Number	Percent
July	167	52	31.1%	115	68.9%
August	171	48	28.1%	123	71.9%
September	172	56	32.6%	116	67.4%
October	175	53	30.3%	122	69.7%
November	157	43	27.4%	114	72.6%
December	166	42	25.3%	124	74.7%
January	162	46	28.4%	116	71.6%
February	147	41	27.9%	106	72.1%
March	157	43	27.4%	114	72.6%
April	147	37	25.2%	110	74.8%
May	133	37	27.8%	96	72.2%
June	134	38	28.4%	96	71.6%
Mo. Avg.	157	45	28.7%	113	72.0%

¹ Teen parents are defined based on the client's head of household relationship code. If the client is coded as a "CP" (child parent), the child is considered to be living under legal guardianship while caring for their own child. Other teen parents are coded as a "SE" (head of household) "SP" (Spouse), or "OP" (Other Parent).

TANF/WorkFirst Program

TANF/SFA Caseload¹ Pregnant² Women and Women with Children 12 Months or Younger SFY 2002 - SFY 2011

Source: ESA-ACES Data



SFY 2011	Adult Caseload	Pregnant		0 to 3 Month Old Child		4 to 12 Month Old Child	
		Number	Percent	Number	Percent	Number	Percent
July	42,475	5,721	13.5%	4,027	9.5%	6,661	15.7%
August	43,448	5,844	13.5%	4,041	9.3%	6,691	15.4%
September	44,016	5,884	13.4%	4,008	9.1%	6,654	15.1%
October	44,428	5,865	13.2%	4,027	9.1%	6,612	14.9%
November	43,999	5,755	13.1%	4,047	9.2%	6,764	15.4%
December	44,814	5,861	13.1%	4,171	9.3%	7,045	15.7%
January	44,730	5,856	13.1%	4,105	9.2%	7,068	15.8%
February	38,423	5,295	13.8%	3,622	9.4%	6,732	17.5%
March	37,524	5,318	14.2%	3,656	9.7%	6,586	17.6%
April	36,564	5,182	14.2%	3,595	9.8%	6,395	17.5%
May	35,518	5,124	14.4%	3,534	9.9%	6,147	17.3%
June	35,217	5,158	14.6%	3,533	10.0%	5,981	17.0%
Mo. Avg.	40,930	5,572	13.6%	3,864	9.4%	6,611	16.2%

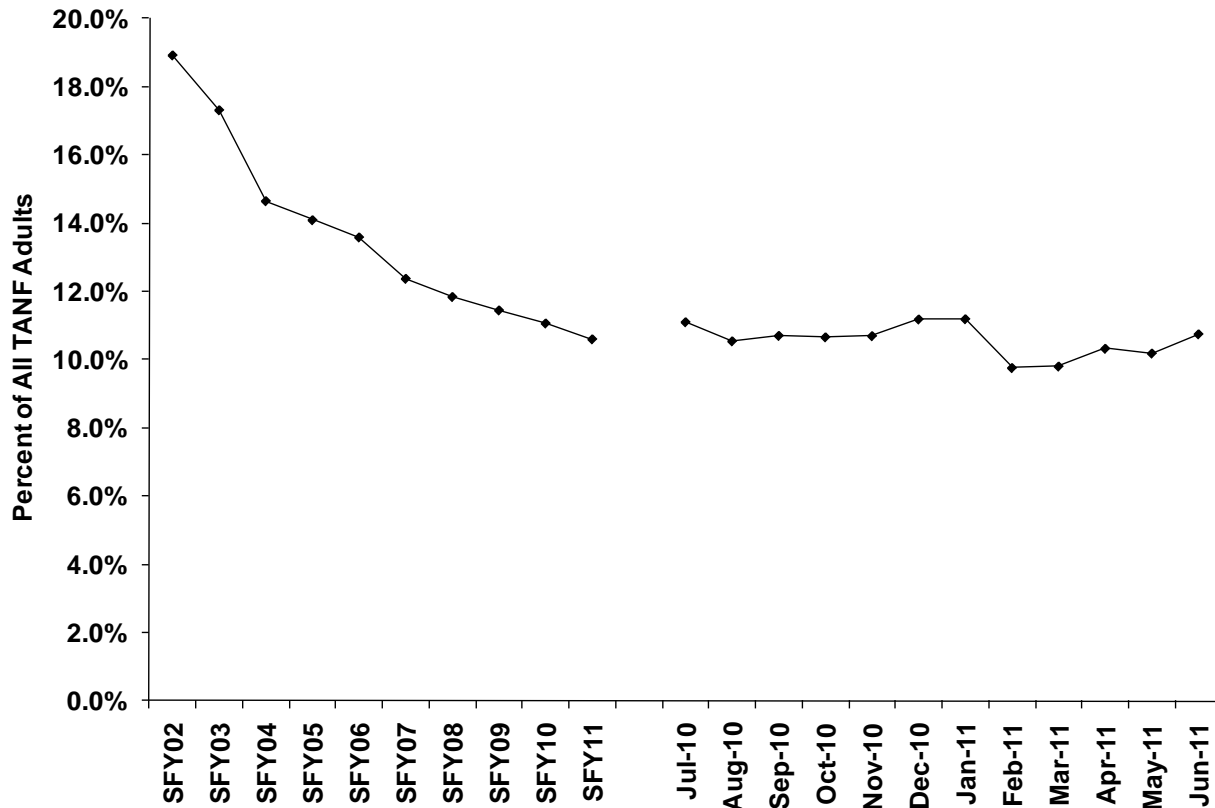
¹ Cases are unduplicated across groups. If a case has multiple young children or a pregnant recipient and a young child, the case category reflects the youngest child. Adults include teen parents.

² Pregnant women were identified using pregnancy status data entered in ACES.

TANF/WorkFirst Program

Employed¹ TANF/SFA Adults² SFY 2002 - SFY 2011

Source: ESA-ACES Data



SFY 2011	Adults	Employed	
		Number	Percent
July	49,073	5,450	11.1%
August	50,245	5,299	10.5%
September	50,870	5,446	10.7%
October	51,344	5,475	10.7%
November	50,906	5,446	10.7%
December	51,998	5,817	11.2%
January	52,070	5,829	11.2%
February	44,985	4,392	9.8%
March	43,967	4,312	9.8%
April	42,748	4,415	10.3%
May	41,497	4,228	10.2%
June	41,044	4,413	10.8%
Mo. Avg.	47,562	5,044	10.6%

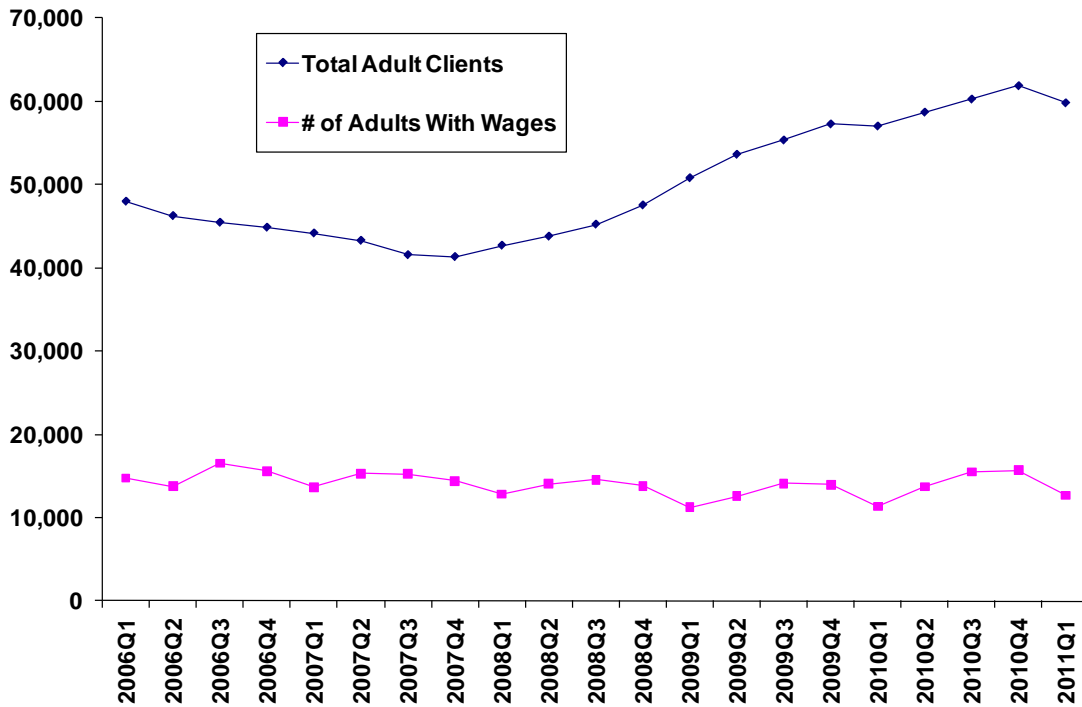
¹ Employment status is based on client's self-reported earnings from work as recorded in the ACES database. If the client reported \$5 or more earned income in the month, client is counted as employed.

² Includes teen parents.

TANF/WorkFirst Program

TANF/SFA Adults Receiving Quarterly Wages¹ January 2006 – March 2011

Source: ESA-ACES Data and ESD-UI Wage Data



Quarter	Total Adult Clients	# With Quarterly Wages		Total Quarterly Wages	Total Quarterly Wages/Hr.
		Number	Percent		
2006Q1	47,981	14,778	30.8%	\$1,803	\$9.95
2006Q2	46,245	13,786	29.8%	\$1,794	\$9.82
2006Q3	45,445	16,514	36.3%	\$1,890	\$9.98
2006Q4	44,849	15,609	34.8%	\$1,941	\$10.13
2007Q1	44,152	13,667	31.0%	\$1,789	\$10.29
2007Q2	43,271	15,285	35.3%	\$1,951	\$10.26
2007Q3	41,533	15,231	36.7%	\$1,945	\$10.38
2007Q4	41,307	14,417	34.9%	\$2,003	\$10.58
2008Q1	42,680	12,830	30.1%	\$1,873	\$10.74
2008Q2	43,771	14,069	32.1%	\$1,959	\$10.69
2008Q3	45,218	14,583	32.3%	\$1,991	\$10.80
2008Q4	47,530	13,814	29.1%	\$2,057	\$10.99
2009Q1	50,804	11,245	22.1%	\$1,851	\$11.15
2009Q2	53,633	12,583	23.5%	\$1,922	\$10.98
2009Q3	55,353	14,121	25.5%	\$1,983	\$10.82
2009Q4	57,287	13,942	24.3%	\$2,068	\$10.94
2010Q1	57,039	11,325	19.9%	\$1,864	\$10.91
2010Q2	58,711	13,723	23.4%	\$1,977	\$10.87
2010Q3	60,287	15,501	25.7%	\$2,033	\$10.96
2010Q4	61,892	15,708	25.4%	\$2,106	\$11.02
2011Q1	59,828	12,670	21.2%	\$1,912	\$10.98

¹ TANF Adult clients are matched with the Employment Security Department (ESD) Unemployment Insurance (UI) wage data by Social Security Number. Numbers reflect TANF adult clients who were employed and received wages of more than \$5.00 for any length of time during a quarter.

TANF/WorkFirst Program

TANF/SFA Cases with Adults in WorkFirst Sanction Status SFY 2011

Source: ESA-ACES Data

SFY 2011	Adult Caseload	Total Cases Sanctioned	% of Cases Sanctioned	Adults	Adults Sanctioned	% of Adults Sanctioned
July	42,475	1,690	4.0%	49,073	1,800	3.7%
August	43,448	1,938	4.5%	50,245	2,047	4.1%
September	44,016	2,893	6.6%	50,870	3,079	6.1%
October	44,428	3,605	8.1%	51,344	3,873	7.5%
November	43,999	3,521	8.0%	50,906	3,748	7.4%
December	44,814	3,968	8.9%	51,998	4,212	8.1%
January	44,730	3,955	8.8%	52,070	4,180	8.0%
February	38,423	3,357	8.7%	44,985	3,547	7.9%
March	37,524	3,564	9.5%	43,967	3,757	8.5%
April	36,564	3,681	10.1%	42,748	3,892	9.1%
May	35,518	3,614	10.2%	41,497	3,804	9.2%
June	35,217	3,629	10.3%	41,044	3,822	9.3%
Mo. Avg.	40,930	3,285	8.0%	47,562	3,480	7.3%

TANF/WorkFirst Program

TANF/SFA Caseload by Primary Language¹
June 2011

Source: ESA-ACES Data

		All Cases		% of Non-English Cases
		Number	Percent	
English Language Codes				
EN	English	48,369	82.3%	
SL	Large Print	39	0.1%	
LP	Sign Language	34	0.1%	
BR	Braille	1	0.0%	
	Total	48,443	82.4%	
Non-English Language Codes				
SP	Spanish	8,232	14.0%	79.8%
SM	Somali	435	0.7%	4.2%
RU	Russian	425	0.7%	4.1%
AR	Arabic	190	0.3%	1.8%
VI	Vietnamese	179	0.3%	1.7%
CA	Cambodian (Khmer)	92	0.2%	0.9%
BS	Burmese	84	0.1%	0.8%
TI	Tigrigna	73	0.1%	0.7%
AM	Amharic	73	0.1%	0.7%
FA	Farsi	36	0.1%	0.3%
KO	Korean	31	0.1%	0.3%
SA	Samoan	28	0.0%	0.3%
OM	Oromo	27	0.0%	0.3%
TR	Trukese	25	0.0%	0.2%
SI	Swahili	21	0.0%	0.2%
FR	French	20	0.0%	0.2%
CH	Chinese	19	0.0%	0.2%
LA	Laotian	13	0.0%	0.1%
TA	Tagalog	13	0.0%	0.1%
OT	Other Languages ²	302	0.5%	2.9%
	Total	10,318	17.6%	
	Total	58,761	100%	

¹ Primary Language Code is based on the language in which the Assistance Unit requested their materials to be sent.

² Includes all other languages with one case each

TANF/WorkFirst Program

TANF/SFA Client Demographics

June 2011

Source: ESA-ACES Data

Characteristic	All Clients		All Adults		All Children	
	Number	Percent	Number	Percent	Number	Percent
TOTAL	137,123	100.0%	41,044	100.0%	96,079	100.0%
Gender						
Female	79,787	58.2%	32,040	78.1%	47,747	49.7%
Male	57,336	41.8%	9,004	21.9%	48,332	50.3%
Race						
White	57,952	42.3%	23,542	57.4%	34,410	35.8%
Hispanic	29,756	21.7%	4,639	11.3%	25,117	26.1%
Black	13,276	9.7%	4,940	12.0%	8,336	8.7%
Asian/Pacific Islander	5,242	3.8%	2,011	4.9%	3,231	3.4%
Native American	3,464	2.5%	1,301	3.2%	2,163	2.3%
Unknown	27,433	20.0%	4,611	11.2%	22,822	23.8%
Marital Status (Adults Only)						
Separated	4,491	3.3%	4,401	10.7%	90	0.1%
Married	8,855	6.5%	8,747	21.3%	108	0.1%
Never Married	119,564	87.2%	23,771	57.9%	95,793	99.7%
Divorced	3,727	2.7%	3,706	9.0%	21	0.0%
Widowed	178	0.1%	178	0.4%	0	0.0%
Unknown	308	0.2%	241	0.6%	67	0.1%
Citizenship¹						
U.S. Citizen	128,315	93.6%	36,375	88.6%	91,940	95.7%
Resident Alien	8,631	6.3%	4,608	11.2%	4,023	4.2%
U.S. National	177	0.1%	61	0.1%	116	0.1%
Age						
< 1 Year Old	9,576	7.0%	0	0.0%	9,576	10.0%
1 – 5 Years Old	36,003	26.3%	0	0.0%	36,003	37.5%
6 – 10 Years Old	23,604	17.2%	0	0.0%	23,604	24.6%
11 – 15 Years Old	18,273	13.3%	0	0.0%	18,273	19.0%
16 – 17 Years Old	6,670	4.9%	95 ²	0.2%	6,575	6.8%
18 – 20 Years Old	7,195	5.2%	5,147	12.5%	2,048 ³	2.1%
21 – 29 Years Old	18,031	13.1%	18,031	43.9%	0	0.0%
30 – 39 Years Old	10,984	8.0%	10,984	26.8%	0	0.0%
40 – 49 Years Old	5,264	3.8%	5,264	12.8%	0	0.0%
50 – 55 Years Old	1,144	0.8%	1,144	2.8%	0	0.0%
56 – 59 Years Old	243	0.2%	243	0.6%	0	0.0%
60 – 64 Years Old	111	0.1%	111	0.3%	0	0.0%
65+ Years Old	25	0.0%	25	0.1%	0	0.0%
Mean Age of Adults	30.0 Years Old		Median Age of Adults		28.0 Years Old	

- **Average months on Assistance since July 1997 (all adults) = 23.5**
- **Median months on Assistance since July 1997 (all adults) = 17.0**

¹ See Refugee/Immigrant section, page 24 for glossary of Citizenship terms.

² Adults and children are defined based on the client's head of household relationship code. Adults under the age of 18 include teen head of household members, or a teen spouse to the head of household member.

³ Examples of over-age children are those who remain under legal guardianship or are a biological child, a dependent sibling, a niece/nephew, a foster child, a dependent first cousin, or a grandchild.

TANF/WorkFirst Program

TANF/SFA Child Demographics

June 2011

Source: ESA-ACES Data

Characteristic	All Children		Children in Child Only Cases	
	Number	Percent	Number	Percent
TOTAL	96,079	100.0%	40,536	100.0%
Gender				
Female	47,747	49.7%	20,387	50.3%
Male	48,332	50.3%	20,149	49.7%
Race				
White	34,410	35.8%	11,470	28.3%
Hispanic	25,117	26.1%	16,996	41.9%
Black	8,336	8.7%	2,596	6.4%
Asian/Pacific Islander	3,231	3.4%	907	2.2%
Native American	2,163	2.3%	984	2.4%
Unknown	22,822	23.8%	7,583	18.7%
Citizenship¹				
U.S. Citizen	91,940	95.7%	40,098	98.9%
Resident Alien	4,023	4.2%	383	0.9%
U.S. National	116	0.1%	55	0.1%
Age				
< 1 Year Old	9,576	10.0%	1,972	4.9%
1 – 5 Years Old	36,003	37.5%	12,841	31.7%
6 – 10 Years Old	23,604	24.6%	11,371	28.1%
11 – 15 Years Old	18,273	19.0%	9,532	23.5%
16 – 17 Years Old	6,575	6.8%	3,693	9.1%
18 – 20 Years Old	2,048	2.1%	1,127	2.8%
Mean Age of Children	7.0 Years Old		8.2 Years Old	
Median Age of Children	6.0 Years Old		8.0 Years Old	

¹ See Refugee/Immigrant section, page 24 for glossary of Citizenship terms.