

Charging Data

87 kW battery



Level 1 J1772 @ 1.5 kWh
3.5 miles of range in 60 minutes

Level 2 J1772 @ 7.5 kWh
28 miles of range in 60 minutes



Level 3 CCS1 @ 107 kWh
80% charge in 37 minutes

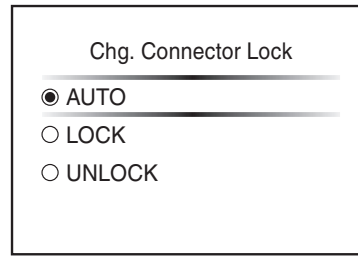
On the road, goal is 80% charge – the last 20% takes 2-3 times longer than the first 80%. Save the 100% for overnight charging.

Charge Port Lid/Charge Connector Lock System

- To open the charge port lid, unlock the doors then push the part of the lid near the rear of vehicle.
 - When the charge port lid springs up slightly, place your hand underneath the lid and open it fully.



- To close the charge port lid, slowly move the lid and lock it securely in place.
- The normal or trickle charge connector can be locked to the normal charge port by selecting the charge connector lock mode in the vehicle information display.

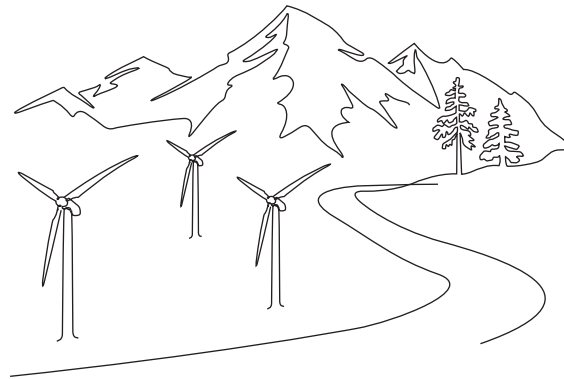


- There are three different modes of the charge connector lock system:

AUTO – The charge connector is locked while charging is in progress and will automatically unlock when charging is complete.

LOCK – The charge connector will remain locked until **UNLOCK** mode is selected or until the temporary unlock operation is performed.

UNLOCK – When the unlock mode is selected, the charge connector will unlock and remain unlocked.



Scan the QR code for the Nissan Ariya owner's manual.

Nissan Ariya



ARIYA

Emergency Contact Phone Numbers

DES Vendor Maintenance
800-542-6840 / 866-329-3471

DES Fuel/Charge Card Questions
360-664-9215

CEI (Accident) Claims
877-443-5777

Roadside Assistance
800-542-6840



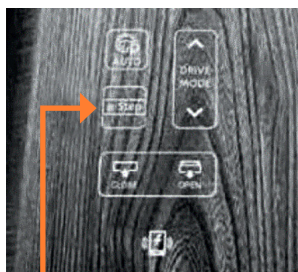
Transforming lives

DSHS 22-2015 (4/24)

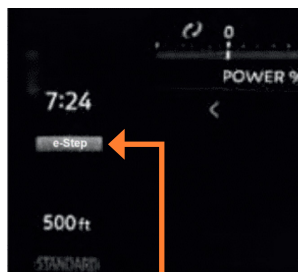
One Step/Eco Modes

e-Step System

- The e-Step system enables the driver to slow the vehicle by operating only the accelerator pedal. This system helps to keep the driver from moving his/her foot between the accelerator pedal and the brake pedal.
- When the e-Step system is activated, the regenerative brake is enhanced and the driver can adjust the vehicle speed by only depressing or returning the accelerator pedal.
- Be sure to confirm the status of the e-Step system in the vehicle Information display before driving.
- To activate or deactivate the e-Step system, place the power switch in the ON position and push the e-Step button located on the center console.
- The e-Step system indicator illuminates e-Step in the vehicle information display when the e-Step system has been activated. To turn the e-Step system off, push the e-Step button.



e-Step button



e-Step system indicator

NOTE: The e-Step system will not function under the following conditions:

- When the vehicle is placed in the **P (PARK)** or **N (NEUTRAL)** position.
- When the cruise control (if equipped), ProPILOT Assist (if equipped) or Automatic Emergency Braking (AEB) is operated.

Drive Mode Selector

The Nissan Ariya comes with 4 drive modes to select from. The Ariya will be defaulted to the **STANDARD** mode which gives a mix of performance and comfort. To get the most range out of your Nissan Ariya, you will want to select the **ECO** mode. This mode also works well with e-Step for maximum range capabilities.

To change the drive modes, place the power switch in the ON position and push the **DRIVE MODE** button, located on the center console, up or down to select the desired mode.



Once you press either the up or down arrows to select your drive mode, the dash will show the Drive Mode Selector screen. Select **ECO** mode.



Automatic Emergency Braking (AEB) with Pedestrian Detection System

- The AEB With Pedestrian Detection System can assist the driver when there is a risk of a forward collision with a vehicle ahead in the traveling lane or with a pedestrian.
- The AEB Pedestrian Detection System will function when your vehicle is driven at speeds above approximately **3 mph** (5 km/h). For the pedestrian detection function, the AEB Pedestrian Detection System operates at speeds between **6-37 mph** (10-60 km/h).
- If there is a risk of a forward collision with a vehicle, an audible tone will sound and the vehicle ahead detection indicator will illuminate. In addition, the system applies partial braking. If the driver does not take action, the AEB Pedestrian Detection System will provide a second set of audible and visual warnings to the driver and then automatically apply harder braking.
- If there is a risk of a forward collision with a pedestrian, an audible tone will sound and the AEB emergency warning indicator will flash. Partial braking will be applied, followed by harder braking if the driver fails to react.

