

## Charging Data

81 kW battery



Level 1 NACS @ 1.3 kWh  
3 miles of range in 60 minutes

Level 2 NACS @ 7.8 kWh  
30 miles of range in 60 minutes

Level 3 NACS @ 250 kWh  
80% charge in 28 minutes

On the road, goal is 80% charge – the last 20% takes 2-3 times longer than the first 80%. Save the 100% for overnight charging.

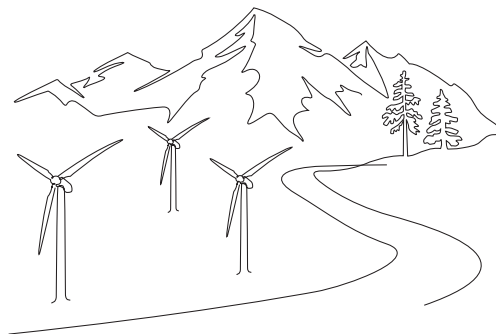
## To Charge

- Open the charge port door (either from the touchscreen or by tapping on the port door) and insert the charging plug.
- The small Tesla logo next to the charge port will pulse green. When fully charged, the logo will no longer be visible.

## To Remove the Plug

- Depress the latch on the charging station plug (1) and wait until the Tesla logo next to the port turns white.
- Remove BOTH the **charging station plug (1)** and the **adaptor (2)** AT THE SAME TIME.

*NOTE: Failure to do this will result in the adaptor being stuck in the charge port.*



Scan the QR code for the Tesla Model Y owner's manual.

# Tesla Model Y



## MODEL Y

## Emergency Contact Phone Numbers

DES Vendor Maintenance  
800-542-6840 / 866-329-3471

DES Fuel/Charge Card Questions  
360-664-9215

CEI (Accident) Claims  
877-443-5777

Roadside Assistance  
800-542-6840



Transforming lives

DSHS 22-2016 (4/24)

# Acceleration Modes

Touch **CONTROLS > PEDALS AND STEERING > ACCELERATION** to adjust the amount of acceleration you experience when driving Model Y.

- **CHILL:** Limits acceleration for a smooth and gentle ride.  
*NOTE: When Chill is selected, Chill displays on the touchscreen above the driving speed.*
- **STANDARD:** Provides the normal level of acceleration on *Non-Performance* vehicles.
- **SPORT:** Provides the normal level of acceleration on *Performance* vehicles.

You can improve the efficiency of the cabin heating by reducing your selected acceleration modes. This allows the heat pump system to take more heat from the battery to efficiently heat the cabin, instead of maintaining the battery's ability to provide peak acceleration performance. This helps to maximize driving efficiency in colder weather.

*Note that when subsequently increasing the acceleration mode, the battery requires time to warm up before the increased level of acceleration is available.*

## Setting the Regenerative Braking Level

Whenever Model Y is moving and your foot is off the accelerator, regenerative braking slows down the vehicle and feeds any surplus power back to the battery.

You can use the touchscreen to change the level of regenerative braking:

1. Touch **CONTROLS > PEDALS AND STEERING > REGENERATIVE BRAKING**.
2. Choose from two levels:
  - **LOW:** Limits regenerative braking. When you release the accelerator, Model Y takes longer to slow down and coasts farther than if set to **STANDARD**.
  - **STANDARD:** Provides the maximum amount of regenerative braking. When you release the accelerator, Model Y slows down, reducing the need to use the brakes.

## Power Meter

*The left side of the power meter represents power generated from regenerative braking, or power that is used to slow down the vehicle. Power being fed back to the battery displays in green whereas power used by the regular braking system displays in gray.*

*The right side of the power meter shows power being output by the battery, such as that used to accelerate the vehicle or to cool the cabin. When you press the accelerator pedal, the power meter fills to the right with black (or white if the display is dark).*



# Voice Commands

Voice commands are not available in all languages. To choose the language you want to use for voice commands, touch **CONTROLS > DISPLAY > VOICE RECOGNITION LANGUAGE**.

Use voice commands to easily control settings and preferences without using the touchscreen. Voice commands are designed to understand natural requests. Use them to:

- Adjust climate preferences.
- Adjust the windshield wiper speed and frequency.
- Control various aspects of your vehicle.
- Navigate to a location.
- Call a contact.
- Interact with apps and settings.

To initiate a voice command, press and release the right scroll wheel button on the steering wheel. When a chime sounds, make your request, then Model Y provides onscreen responses.

