

Report:

Activity Report: DSHS/DOH Human Research Review Board

Fiscal Year 1989-1990



**Office of Planning, Evaluation
and Professional Development**

**ACTIVITY REPORT
DSHS/DOH HUMAN RESEARCH REVIEW BOARD
FISCAL YEARS 1989 AND 1990**

DECEMBER 1990

**Office of Research and Data Analysis
Department of Social and Health Services
Olympia, Washington 98504**

STATE OF WASHINGTON
Booth Gardner, Governor

DEPARTMENT OF SOCIAL AND HEALTH SERVICES
Richard J. Thompson, Secretary

PLANNING, EVALUATION AND PROFESSIONAL DEVELOPMENT
Joseph G. Bell, Director

OFFICE OF RESEARCH AND DATA ANALYSIS
Timothy R. Brown, Chief

HUMAN RESEARCH REVIEW SECTION
Michael A. Garrick, Coordinator

When ordering,
please refer to Report #11-52

ACKNOWLEDGEMENTS

This report is dedicated to the past and present members of the DSHS/DOH Human Research Review Board, who have contributed their time and expertise to represent the interests of those who are asked to participate as subjects in research conducted within the jurisdiction of the Department of Social and Health Services and the Department of Health.

(Updated November 1990)

DEPARTMENT OF SOCIAL AND HEALTH SERVICES/DEPARTMENT OF HEALTH

Human Research Review Board

Board A

Chairperson

Robert Doupe¹, M.S.W.
Administrator, Program Support
DSHS Juvenile Rehabilitation

Executive Secretary

Michael A. Garrick, Ph.D.
Coordinator, Human Research Review Section
DSHS Planning, Evaluation & Professional
Development

Members

Todd Allen Damrow, Ph.D.
Public Health Microbiology
Laboratory, Department of Health

Robert L. Davis, M.D.
Chronic Disease Epidemiology
Department of Health

Sharon Estee, Ph.D.
Office of Research & Data Analysis
DSHS Planning, Evaluation & Professional
Development

David Fallen, Ph.D.
Research Director
Washington Sentencing Guidelines Commission

Robert Leahy, M.D.
Physician

James Owens, M.D.
Medical Director
DSHS Juvenile Rehabilitation

William Quick, M.S.W.
DSHS Children & Family Services

JoAnn Ray, Ph.D.
Director, Undergraduate Program
School of Social Work & Human Services
Eastern Washington University

Dan Rubin, M.P.P.
Director, Health Planning
Department of Health

Robert Stalker, Jr., J.D.
Litigation Coordinator
Evergreen Legal Services

Patricia Starzyk, Ph.D.
Center for Health Statistics
Department of Health

Kathleen Stetz, Ph.D.
Research Associate
UW Department of Psychosocial Nursing

DEPARTMENT OF SOCIAL AND HEALTH SERVICES/DEPARTMENT OF HEALTH

Human Research Review Board

Board B

Chairperson

Rebecca Ann Rudner, Ph.D.
Clinical Psychologist
Child Study and Treatment Center

Executive Secretary

Michael A. Garrick, Ph.D.
Coordinator, Human Research Review Section
DSHS Planning, Evaluation & Professional
Development

Members

Cathy Blinka, J.D.
Washington Protection & Advocacy System

Daniel W. Hommer, M.D.
Associate Professor
UW Department of Psychiatry & Behavioral Sciences

Jeffrey Skolnick, M.D.
Psychiatrist
Western State Hospital

Kathleen Stetz, Ph.D.
Research Associate
UW Department of Psychosocial Nursing

John J. Williams, Ph.D.
Chief Psychologist
Eastern State Hospital

Stephen E. Williams, Pharm.D.
Clinical Pharmacist
Rainier School



TABLE OF CONTENTS

	<u>Page</u>
EXECUTIVE SUMMARY.....	xiii
I. PURPOSE.....	1
II. AUTHORITY.....	1
III. ACTIVITIES SUBJECT TO BOARD REVIEW.....	2
IV. ADMINISTRATION.....	2
V. REVIEW BOARD FUNCTIONS.....	3
VI. REVIEW BOARD MEMBERSHIP.....	3
VII. REVIEW PROCESS.....	3
VIII. MAJOR ACTIVITIES: FY 1989-1990.....	4
IX. REVIEW VOLUME AND TRENDS.....	6
X. PROJECT LOG.....	8

LIST OF TABLES AND FIGURES

	<u>Page</u>
Membership List: DSHS/DOH Human Research Review Board A.....	v
Membership List: DSHS/DOH Human Research Review Board B.....	vii
Table 1 Summary of Research Review Activities.....	7
Table 2 Project Disposition.....	9
Figure 1 Research Projects by DSHS/DOH Program.....	10
Figure 2 Researchers' Organizational Affiliation.....	10
Project Log.....	13

EXECUTIVE SUMMARY

THIS REPORT PROVIDES AN OVERVIEW OF THE DSHS/DOH HUMAN RESEARCH REVIEW BOARD. IT SUMMARIZES THE BOARD'S AUTHORITY AND FUNCTIONS, OUTLINES THE HUMAN RESEARCH REVIEW PROCESS, AND DESCRIBES MAJOR ACTIVITIES DURING FY 1989-1990. IT ALSO INCLUDES A LOG OF ALL RESEARCH PROJECTS THAT WERE UNDER REVIEW DURING THIS TWO YEAR PERIOD.

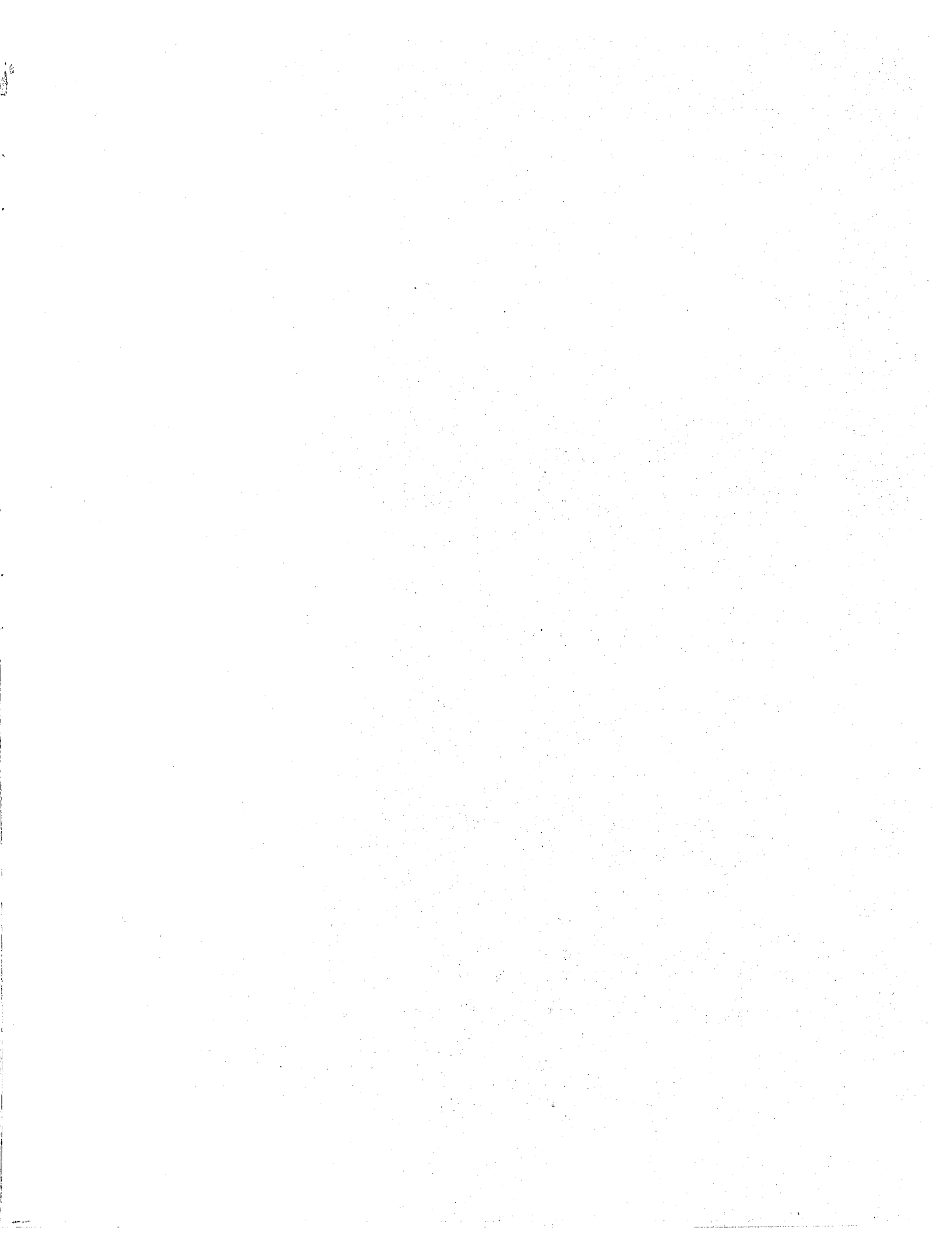
State law, administrative regulations and department policy require that the DSHS/DOH Human Research Review Board review and approve all research (except certain limited categories) involving DSHS and DOH clients, employees or confidential records, and all human subject research funded by DSHS or DOH, or contracted to outside parties, whether or not department clients, employees or confidential records are involved.

This review process is intended to protect the rights of subjects participating in the research, and to assure that the research is sound and is likely to produce benefits which are greater than the risks to subjects.

The DSHS/DOH Human Research Review Board is comprised of professionals working both within and outside DSHS and DOH. Board members volunteer a substantial amount of their time to review proposals submitted by researchers. The membership of Board A and Board B as of November 1990 is shown on pages v and vii.

The Board receives administrative support from the DSHS Human Research Review Section. The Coordinator of the Section also serves as the Executive Secretary of the Board.

More information about the departments' human research review policies and procedures, and copies of the Guide to DSHS/DOH Policy on Protection of Human Research Subjects and the departments' Research Application Kit, may be obtained by contacting the Human Research Review Section, OB-35, or by calling 753-0424 (SCAN 234-0424).



ACTIVITY REPORT

Department of Social and Health Services
Department of Health

Human Research Review Board

Fiscal Years 1989 and 1990

I. PURPOSE

The Department of Social and Health Services and the Department of Health are responsible for protecting the rights and welfare of clients, employees, and members of the general public who serve as subjects in research within the departments' jurisdiction. The departments have fulfilled this responsibility by establishing a formal policy for the protection of human subjects, and by maintaining a standing Human Research Review Board, which operates under the auspices of an Assurance of Compliance with the federal Department of Health and Human Services.

The DSHS/DOH Human Research Review Board has primary responsibility for implementing the departments' human subjects protection policy. The Review Board conducts an ethical and a technical review of proposed research projects to assure that the rights and welfare of subjects are adequately protected, that risks are minimized, are not unreasonable, and are outweighed by potential benefits. The review must also determine that the proposed design and methods are adequate and appropriate in the light of stated project objectives.

II. AUTHORITY

The departments' human subjects protection policy complies with federal regulation (45 CFR 46) and with protective requirements of state law (e.g., RCW 42.48; RCW 71.05.030). Washington Administrative Code (WAC 388-10) and DSHS Administrative Policy 12.01 prohibit any service or administrative unit from allowing the conduct of research and related activities until the plans or protocols have been approved by the Review Board. The departments' policy and procedures are described more fully in the Guide to DSHS/DOH Policy on Protection of Human Research Subjects. The departments' policy on protecting human research subjects is generally referred to as the human research review policy.

III. ACTIVITIES SUBJECT TO BOARD REVIEW

Except for research activities specifically exempted in the Guide to DSHS/DOH Policy..., Section V, the departments' human research review policy applies to all research and related activities that involve department clients, wards, or employees as human subjects, or that require disclosure of their personal records, or disclosure of nonpublic records in the departments' custody. Research conducted by department staff which involves subjects who are not department clients is also subject to the review policy. The policy also applies to research and related activities contracted by DSHS and DOH to non-departmental organizations or individuals, regardless of whether the research involves department clients or a nondepartmental subject population.

A description of activities subject to Board review is contained in the Guide to DSHS/DOH Policy..., Sections I and III. This document, however, may not always provide enough guidance in distinguishing between research and related activities which are subject to review, and administrative data collection or program monitoring activities which are not subject to review. To meet this need, Jurisdictional Guidelines have been developed to assist researchers and program managers in determining the boundaries of Review Board jurisdiction. These guidelines are available on request from the Human Research Review Section.

IV. ADMINISTRATION

The DSHS Human Research Review Section is a small administrative unit consisting of a coordinator and a half-time secretary. The Coordinator of the Review Section provides staff support to the Review Board, and coordinates and administers the DSHS/DOH human research review policy. The Coordinator provides liaison between DSHS and DOH and other agencies and institutions on human subjects protection issues. The Coordinator also serves as the Executive Secretary of the Review Board.

Research proposals requiring Board review must be submitted on the departments' application forms. Research Application Kits are available from the Review Section. The Coordinator of the Review Section is available to assist researchers in completing their applications, and to consult on jurisdictional and policy or procedural questions.

Department researchers and managers who are unsure of whether a proposed activity requires Board review should call the Review Section. Copies of the Guide to DSHS/DOH Policy..., and all other documents described in this report, may be obtained from the Review Section, by calling (206) 753-0424 (SCAN 234-0424) during regular business hours.

V. REVIEW BOARD FUNCTIONS

The primary function of the DSHS/DOH Human Research Review Board is to protect the interests of individuals participating in research within the departments' jurisdiction. An important secondary function is to provide DSHS/DOH management with the necessary expertise to determine whether proposed research is valid, worthwhile, and in compliance with federal and state statutes and regulations. DSHS and DOH administrators, managers and supervisors are encouraged to refer all inquiries regarding human subjects research to the Coordinator of the Review Section.

VI. REVIEW BOARD MEMBERSHIP

Review Board members are chosen to represent the diversity of programs administered by DSHS and DOH, and to provide the necessary expertise to conduct a thorough ethical and technical review of proposed research. The Review Board is comprised of Board A, which reviews all research proposals except those in mental health, and Board B, which specializes in the review of mental health proposals.

Review Board A includes at least two physician members who are licensed to prescribe drugs in Washington State, and at least one member whose primary interests are in nonscientific areas. Review Board B includes at least two psychiatrists, as well as other mental health professionals. The majority of Board members have graduate level training in statistics, research design, and research methods, and several are employed full time in scientific research positions. Each Board retains at least one member whose primary interest is in advocating for the rights of department clients, patients, or wards. Although the majority of members are department employees, the Board also includes community representatives who are unencumbered by possible departmental interests. The current membership of Board A and Board B is listed on pages v and vii.

VII. REVIEW PROCESS

Investigators wishing to conduct human subjects research which falls under DSHS/DOH jurisdiction should submit their application to the Review Section. Depending on the nature, scope and complexity of the proposed research, applications are either referred to one of the full Review Boards for consideration at a regularly scheduled meeting, or are reviewed by the Board Chair and Executive Secretary through the expedited process (See Guide to DSHS/DOH Policy..., Section IV(1) for activities that are eligible for expedited review).

Copies of proposals requiring full Board review are sent to all members two weeks prior to the meeting. One member is asked to present the proposal to the Board at the meeting. This "primary reviewer" may contact the researcher before the meeting to discuss potential concerns or to obtain additional information. Occasionally, the researcher is invited to attend the meeting to respond to questions or to provide supplementary information.

Following presentation of the proposal and discussion of any concerns, the primary reviewer is asked for a disposition recommendation. Disposition of the proposal is decided by a simple majority vote of all members present at the meeting. The Board may approve the proposal as submitted, approve the proposal subject to specified revisions or clarifications, hold the proposal in abeyance pending submission of supplemental information, or disapprove the proposal.

Unfavorable review dispositions (i.e., disapprovals, restrictions, special approval conditions) are binding and not subject to administrative override. Researchers may appeal unfavorable review dispositions directly to the Review Board. Each proposal approved by the Board is subject to review and concurrence by the appropriate DSHS/DOH division director or assistant secretary.

If approved research is to be conducted within departmental offices, institutions or other facilities, the Review Section will provide local administrators with information on Board approved procedures, with a request that they supervise the research to ensure that these procedures are followed.

VIII. MAJOR ACTIVITIES: 1989-1990

On May 31, 1989, Governor Booth Gardner signed into law Engrossed Senate Bill No. 6152, which created a separate agency responsible for health programs and policy in the State of Washington. The Department of Health combined programs previously housed in the DSHS Public Health Division, the Department of Licensing, the Hospital Commission and the Board of Pharmacy. By creating a single health agency in state government, the legislature intended to create a strong, clear focus on health issues and to recognize the need for individuals and communities to protect the public health. The legislation creating the new Department of Health emphasized the department's role as a clearinghouse for health information and a repository of population-based health-related data.

Approximately 40% of the proposals reviewed by the Board in 1987 and 1988 were in DSHS programs transferred to the new department. Many of these proposals were submitted by university-affiliated health professionals wishing access to identified personal records governed by the research records disclosure law (RCW 42.48). Other health research reviewed included the HIV Seroprevalence Studies sponsored by the Centers for Disease Control, and studies of birth

defects related to high risk behaviors during pregnancy. Under existing statute and rule, the Department of Health could not allow these studies to be conducted without review and approval by a human research review board.

To provide continuity in the human research review process, the DSHS Human Research Review Board initially reviewed human subjects research proposals for the Department of Health under an Inter-agency Agreement. In the meantime, a request was submitted to the Department of Health and Human Services to amend the DSHS Assurance of Compliance to include the new Department of Health. The amended Assurance was signed by the DSHS Secretary and the DOH Secretary in January 1990, and was approved by the Department of Health and Human Services in February 1990. Two policy documents (Guide to DSHS/DOH Policy on Protection of Human Research Subjects, and Functions, Responsibilities and Bylaws of the DSHS/DOH Human Research Review Board) were revised to reflect the dual-agency status of the Review Board. The revised policy documents were published, and the joint DSHS/DOH Human Research Review Board became operational, on March 1, 1990.

Second Substitute Senate Bill 5400, passed during the 1989 Legislative Session, implemented major changes in the way mental health services are administered in Washington State. As part of these changes, the legislature authorized the creation of an institute for the study and treatment of mental disorders at Eastern and Western State Hospitals. The Washington Institute is intended to explore "new, innovative, and scientifically based treatment models for persons presenting particularly difficult and complicated clinical syndromes". The Institute is authorized to design, sponsor and conduct clinical research projects to accomplish this and other purposes.

The DSHS Mental Health Division anticipated that the creation of The Washington Institute would stimulate an increase in the number of complex research proposals involving hospitalized mentally disabled patients. To meet the challenge of expediently reviewing these proposals while protecting the rights and welfare of particularly vulnerable individuals, new collaborative arrangements with the University of Washington Human Subjects Review Committee were established, and additional Board members with expertise required to review mental health research proposals were recruited.

In May 1990, the Department of Health and Human Services authorized DSHS and DOH to establish a second Review Board to respond to the increased volume and complexity of proposals received for review. DSHS/DOH Human Research Review Board B was established in the summer of 1990, and met separately for the first time in September 1990. Review Board A continues to review all proposals in DSHS or DOH jurisdiction that are not related to mental health, and Review Board B reviews only mental health related research proposals. The two Review Boards currently meet on the same day in morning and afternoon sessions.

IX. REVIEW VOLUME AND TRENDS

Table 1 summarizes five measures of Review Board activity over the past seventeen years. Review volume has fluctuated over time, with the general trend in review activity correlating rather closely with the waxing and waning of funds available to support research.

Total projects under review (A), and new proposals received (B), reached a high point in the late 1970's, dropped steadily through the early 1980's, and increased significantly over the last eight years. The total number of Board reviews (C) follows a similar pattern, but has increased more dramatically since the early 1980's, and is almost three times what it was in 1982.

Review activity again increased significantly between 1987-1988 and 1989-1990, as it did between the previous two year periods. The number of new proposals received (B) increased 28%, and the number of Board reviews (C) increased 8%, during this two year period. This trend is expected to continue into the foreseeable future.

During the latest two year period, the Review Board continued to monitor the operation of the HIV Seroprevalence Studies in King, Pierce and Snohomish Counties. The studies are administered through the Department of Health with funds provided by the Centers for Disease Control, and are managed by the local health departments in the three counties. Both blinded studies of left-over blood obtained from clinic sites, and non-blinded studies which collect sera for testing as well as interview data on risk-related behaviors are currently being conducted at numerous sites. Field plans for conducting these studies are individually reviewed and approved by the Board.

Large scale field studies intended to evaluate the Family Independence Program (FIP) continue to operate around the state. The Review Board monitors the operation of the evaluations, and reviews new study components before they begin. There also continues to be a strong interest in conducting research related to Children and Family Services programs, with a special emphasis on research on child abuse and neglect.

With the creation of the Department of Health, the Review Board has experienced an increased number of research proposals that request access to DOH databases. Longitudinal data from a comprehensive hospital discharge abstract reporting system (CHARS) recently has become available, and has prompted requests from researchers interested in exploring various health issues. DOH created the Birth Events Records Database by linking CHARS data to birth records, which also has stimulated interest among researchers. The legislatively mandated evaluation of the Maternity Care Access Act ("First Steps") also has heightened awareness of the availability of new computerized databases useful to health researchers.

TABLE 1

SUMMARY OF RESEARCH REVIEW ACTIVITIES

		Fiscal Years 1974-1988																
FY		1974	1975	1976	1977	1978	1979	1980	1981	1982	1983	1984	1985	1986	1987	1988	1989	1990
A.	31	32	56	90	105	107	61	51	60	76	81	87	88	92	95	117	116	
B.	19	24	45	50	35	33	38	28	24	26	30	26	27	31	34	41	42	
C.	29	44	83	67	43	61	80	56	44	77	47	88	65	96	103	95	119	
D.	5	5	9	2	7	3	37	7	3	5	5	12	9	10	3	8	3	
E.	1	1	1	5	6	9	6	6	4	3	4	3	2	2	1	0	2	

A. TOTAL PROJECTS UNDER REVIEW Includes all projects ongoing at the end of the fiscal years, and all projects pending, completed, cancelled, and disapproved during the fiscal year.

B. NEW PROPOSALS RECEIVED Includes all new proposals received by the Human Research Review Section during the fiscal year.

C. TOTAL BOARD REVIEWS Includes all full Board and expedited reviews of new proposals, and subcommittee reviews of Board required revisions in proposals, as well as reviews of annual progress reports, preapplication reviews, and reviews of issues requiring Board action.

D. CANCELLED PROJECTS

E. DISAPPROVED PROJECTS

Toward the end of this two year period, the Review Board experienced an increase in the number and complexity of mental health related research proposals. Proposals involving mentally ill subjects have been received from The Washington Institute, from staff at the two state mental hospitals, and from graduate students at the University of Washington and Washington State University. As more researchers become aware that mental health research with hospitalized patients is feasible, the number of proposals is expected to increase.

X. PROJECT LOG

All research proposals that were received for review by the DSHS/DOH Human Research Review Board during FY 1989-1990 are listed in the Project Log that begins on page 13. The Project Log also includes research projects that were approved prior to FY 1989-1990 and were reviewed on an annual basis during the last two years. Together, these two groups constitute the total number of active projects during FY 1989-1990.

Table 2 shows the disposition of these active projects as of June 30, 1990. Almost forty percent of the active projects were ongoing, i.e., continuing, at the end of FY 1990. Almost the same percentage (37%) had been completed, and about 13% had been cancelled or withdrawn by the end of the period. Only 1.3% had been disapproved, while 9.4% were pending final disposition, i.e., they remained in various stages of review and had yet to receive final approval to proceed.

Figure 1 shows the distribution of active research projects by DSHS and DOH program area. Although the largest single category of research proposals reviewed was in public health, the percentage of health research declined between 1987-1988 and 1989-1990, from 42% to 31% of the total. Proposals in Children and Family Services increased from 17% to 19%, and Mental Health proposals increased from 16% to 17% of the total. Research in most other DSHS program areas also experienced modest gains during the most recent two year period.

The changes in percentages of the total reflect an increase in the number of DSHS proposals rather than a significant decline in the number of public health proposals, which remained almost constant. The total number of active projects increased 24%, from 129 in 1987-1988 to 160 in 1989-1990.

Figure 2 shows the organizational affiliation of researchers submitting proposals for review or actively conducting research during the most recent two year period. Forty-two percent of these researchers are university affiliated, with the University of Washington accounting for the large majority. DSHS and DOH provide an important source of data for students in graduate and post graduate programs. About 14% of the research under review is

TABLE 2
PROJECT DISPOSITION
(as of June 30, 1990)

	OLD PROJECTS (CARRIED FORWARD FROM PREVIOUS YEARS)		NEW PROJECTS (SUBMITTED DURING FY 1989-1990)		TOTAL PROJECTS	
	N	%	N	%	N	%
ONGOING	16	21	45	54.2	61	38.3
COMPLETED	49	64.5	10	12	59	37.1
CANCELLED	10	13.2	11	13.3	21	13.2
DISAPPROVED	0	0	2	2.4	2	1.3
PENDING	<u>1</u>	<u>1.3</u>	<u>15</u>	<u>18.1</u>	<u>16</u>	<u>10.1</u>
TOTAL	76	100	83	100	159	100

FIGURE 1.
RESEARCH PROJECTS BY DSHS/DOH
PROGRAM: FY 1989-1990
(N = 160)

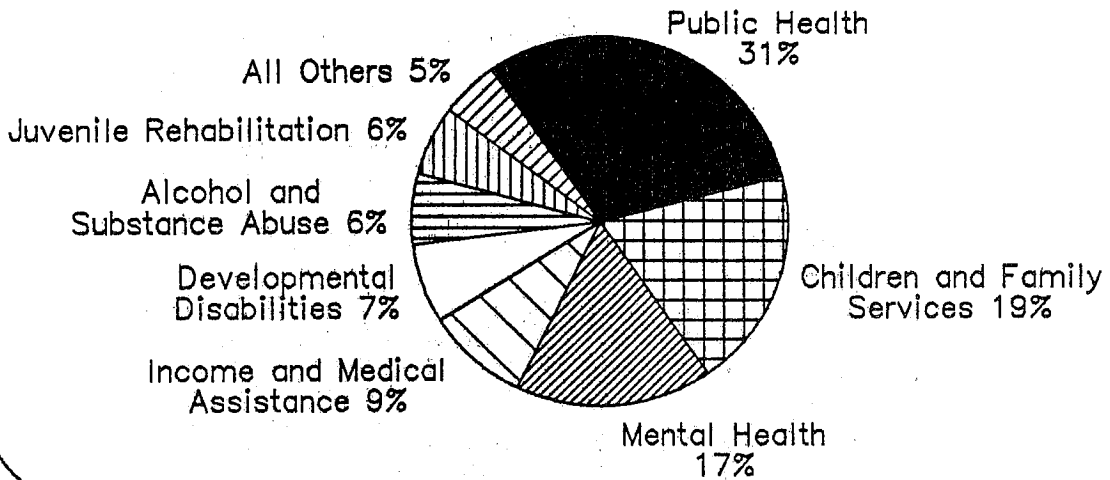
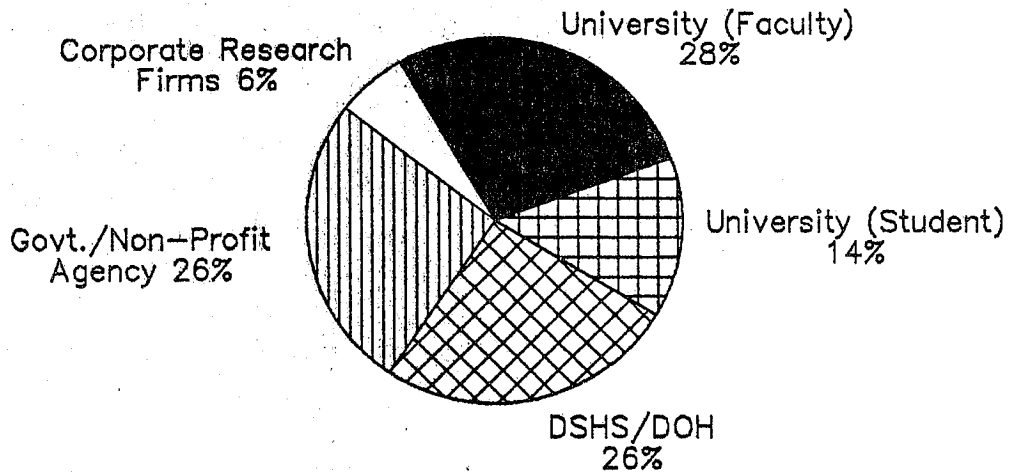


FIGURE 2.
RESEARCHER'S ORGANIZATIONAL
AFFILIATION: FY 1989-1990
(N = 160)



conducted by university graduate students for thesis and dissertation projects. The majority of this research involves access to the departments' confidential records, and research which requests client participation in surveys.

The percentage of all research conducted by DSHS and DOH researchers increased from 19% in 1987-1988, to 26% in 1989-1990. This figure does not include research contracted by DSHS and DOH to university-affiliated researchers or to private non-profit agencies. Research conducted by department staff for graduate credit is listed as being performed by university students.

PROJECT LOG

List of Projects Reviewed by the
DSHS/DOH Human Research Review Board
During Fiscal Years 1989 and 1990

<u>Date of Receipt</u>	<u>Proposal Title and Principal Investigator</u>	<u>Current Status</u>
5-2-77	"Sudden Infant Death Risk Factor", by Donald Peterson, M.D., Department of Epidemiology, University of Washington, Seattle, WA	Completed 12-7-89
2-28-80	"Studies of Reproductive Outcome in the Hanford Nuclear Population: Case-Control Study of Birth Defects and Fetal and Infant Deaths", by Ethel Gilbert, Ph.D., Pacific Northwest Laboratories, Richland, WA	Completed 7-21-88
3-30-81	"A Study to Evaluate the Impact of the Rural Health Clinic Services Act of 1977 on Rural Health Clinics in HEW Region X", by Malcolm Peterson, M.D., Ph.D., Division of Community Medicine, University of Washington, Seattle, WA	Cancelled 9-28-89
8-14-81	"Surveillance of Childhood Cancer Incidence as it Relates to Birth Certificate Data", by Janet R. Daling, Ph.D., Department of Epidemiology, University of Washington, Seattle, WA	Ongoing
3-26-82	"Cephalostat for Dental Care of the Developmentally Disabled", by Frederic Harris, Ph.D., Department of Restorative Dentistry, University of Washington, Seattle, WA	Cancelled 7-20-88
5-5-82	"The Social Ecology of Residential Environments", by Sharon Landesman, Ph.D., Frank Porter Graham Child Development Center, University of North Carolina, Chapel Hill, North Carolina	Ongoing
9-20-82	"Risk Factors for Complex Febrile Seizures: A Case-Control Study", by Thomas Koepsell, M.D., M.P.H., Department of Epidemiology, University of Washington, Seattle, WA	Completed 6-1-89

<u>Date of Receipt</u>	<u>Proposal Title and Principal Investigator</u>	<u>Current Status</u>
5-3-83	"American Indian Alcoholism: Statewide Treatment Utilization", by R. Dale Walker, M.D., Veterans Administration Medical Center, Seattle, WA	Completed 5-3-89
2-3-84	"Case Control Study of Diabetic Individuals to Identify Risk Factors Associated with Lower Extremity Amputations", by Gayle Reiber, M.P.H., Veterans Administration Medical Center, Seattle, WA	Completed 6-1-89
3-29-84	"Congenital Adrenal Hyperplasia: Newborn Mass Screening", by Darrell Brock, Ph.D., Division of Laboratories, Department of Health, Seattle, WA	Completed 3-20-90
4-19-84	"Epidemiologic Investigation of Health Effects in Air Force Personnel Following Exposure to Herbicides", by Colonel William Wolfe, M.D., Epidemiology Division, USAF School of Aerospace Medicine (AFSC), Brooks AFB, TX	Ongoing
7-6-84	"The Impact of Mental Disability on the Family", by Lois Price-Spratlen, Ph.D., Psychosocial Nursing, University of Washington, Seattle, WA	Ongoing
7-26-84	"Adolescent Drug Abuse Treatment and Early Intervention", by J. David Hawkins, Ph.D., School of Social Work, University of Washington, Seattle, WA	Ongoing
8-2-84	"Mortality in a Cohort of Orchard Workers Exposed to Lead Arsenate Spray", by Kristine Tollestrup, Ph.D., Health Information Division, Department of Health, Olympia, WA	Completed 11-14-89

<u>Date of Receipt</u>	<u>Proposal Title and Principal Investigator</u>	<u>Current Status</u>
9-17-84	"Genital Herpes During Pregnancy: Historical Cohort Study of New-born and Maternal Outcomes", by Marsha Wolf, Ph.D., School of Public Health and Community Medicine, Department of Epidemiology, University of Washington, Seattle, WA	Completed 10-12-88
3-25-85	"Rural Infant Care Evaluation", by Steven Gortmaker, Ph.D., Department of Behavioral Sciences, Harvard School of Public Health, Boston, MA	Completed 8-24-88
5-3-85	"Analysis of Factors Contributing to the Failure of Family-Based Child Welfare Services", by David Haapala, Ph.D., Behavioral Sciences Institute, Federal Way, WA	Completed 1-20-89
5-6-85	"Improving the Measurement of Violent Behavior", by Joseph Weis, Ph.D., Department of Sociology, University of Washington, Seattle, WA	Ongoing
12-22-85	"Incidence and Predictors of Post-Cortical Resection Psychosis in Patients with Epilepsy", by Linda Moretti Ojemann, M.D., Harborview Medical Center, University of Washington, Seattle, WA	Cancelled 7-11-88
2-4-86	"NIMH Mental Health Survey", by Marilyn Rosenstein, Quality Assurance Department, Western State Hospital, Ft. Steilacoom, WA	Completed 4-11-89
3-12-86	"A Study of Casualties in Residential Fires in Seattle-King County", by Jane Ballard, Ph.D., Health Information Division, Department of Health, Seattle, WA	Completed 7-19-89
3-13-86	"Use of Health Services by Medicaid Beneficiaries", by Thomas Bice, Ph.D., National Center for Health Services Research, Rockville, MD	Ongoing

<u>Date of Receipt</u>	<u>Proposal Title and Principal Investigator</u>	<u>Current Status</u>
3-25-86	"Adolescent Pregnancy Demonstration Project", by Dennis McBride, Ph.D., Parent and Child Health Services, Department of Social and Health Services, Olympia, WA	Completed 9-18-89
8-1-86	"A Description of the Obstetrical Practices of Family Physicians and Obstetricians in Washington State and the Effect of the Liability Environment on These Practices", by Laura-Mae Baldwin, M.D., Department of Family Medicine, University of Washington, Seattle, WA	Completed 10-9-89
8-11-86	"Fountain House Survey", by Jolyn Wells-Moran, Chinook Club, Auburn, WA	Completed 12-2-88
10-30-86	"Intra-Hospital Relocation of Psychiatric Patients and Effects on Aggression", by Mary Duran Thomas, Ph.D., Psychosocial Nursing, University of Washington, Seattle, WA	Completed 2-27-89
10-31-86	"Washington State Behavioral Risk Factor Surveillance System", by Kristine Tollestrup, Ph.D., Health Information Division, Department of Health, Olympia, WA	Completed 8-27-89
11-4-86	"Lymphoma/Immunosuppression Pilot Study", by Samuel Milham, Jr., M.D., M.P.H., Health Information Division, Department of Health, Olympia, WA	Completed 11-21-89
11-18-86	"Study of Neurologic Illness and Vaccination", by James Gale, M.D., Department of Epidemiology, University of Washington, Seattle, WA	Ongoing
12-8-86	"Maternal Mortality Collaborative", by Lisa Koonin, M.P.H., Centers of Disease Control, Atlanta, GA	Completed 10-18-89

<u>Date of Receipt</u>	<u>Proposal Title and Principal Investigator</u>	<u>Current Status</u>
12-11-86	"Children's Mental Health Needs Assessment", by Benson P. Low, Ph.D., Department of Psychiatry and Behavioral Sciences, University of Washington, Seattle, WA	Completed 2-27-89
12-18-86	"Homebuilders Adoption Service Continuum", by David Haapala, Ph.D., Behavioral Sciences Institute, Federal Way, WA	Completed 7-11-88
12-19-86	"Rainier Follow-Along Pilot Project", by Bruce Treichler, Developmental Disabilities Planning Council, Olympia, WA	Completed 12-27-89
1-13-87	"Assessing the Impact of Insanity Defense Reforms", by Lisa Callahan, Ph.D., Policy Research Associates, Delmar, NY	Completed 1-24-90
1-28-87	"Evaluation of Regionalization of Perinatal Care", by Anita Penuelas, Department of Health Services, University of Washington, Seattle, WA	Completed 2-27-89
2-2-87	"Social Skills and Social Isolation in Physically Abusive Families", by Geoffrey Wiegand, Ph.D., Division of Community Psychiatry, University of Washington, Seattle, WA	Completed 7-8-88
3-13-87	"National Medical Expenditure Survey", by Brad Edwards, WESTAT, Rockville, MD	Completed 4-9-90
5-6-87	"Effects of AIDS Prevention on IV Drug Users", by Terry Reid, Tacoma-Pierce County Health Department, Tacoma, WA	Cancelled 4-19-89
5-12-87	"Career Path Project (CPP)", by Kristin West, Department of Social and Health Services, Olympia, WA	Completed 6-9-89

<u>Date of Receipt</u>	<u>Proposal Title and Principal Investigator</u>	<u>Current Status</u>
5-18-87	"An Evaluation of Client Feedback Statements for MMPI Test Results", by Lisa Christian, M.S., Department of Psychology, Washington State University, Pullman, WA	Completed 5-9-89
6-10-87	"Epidemiology of Hypertension In Pregnancy: Risk Factors", by Noreen Virginia Harris, Ph.D., Tacoma-Pierce County Health Department, Tacoma, WA	Pending
6-26-87	"Stress/Morale Questionnaire", by Ron Nellermeoe, Gonzaga University, Spokane, WA	Completed 8-8-88
7-30-87	"The Black Child in the Foster Care System", by Clarice Walker, M.S., National Black Child Development Institute, Washington, D.C.	Completed 11-29-89
7-31-87	"A Prevalence Study of Human Immunodeficiency Virus (HIV) Infected by Male Inmates...", by Kenneth Peterson, M.P.H., Department of Corrections, Olympia, WA	Completed 8-25-88
8-4-87	"National Evaluation of the Impact of Guardians <u>Ad Litem</u> Judicial Proceedings", by Larry Condelli, Ph.D., CSR Incorporated, Washington, D.C.	Completed 8-8-88
8-6-87	"Mental Health Services to the Mentally Ill Elderly", by Rochelle Crosby, Ph.D., Community Home Health Care, Seattle, WA	Ongoing
8-25-87	"National Child Abuse Mortality Study", by Richard Krugman, M.D., Kempe National Center for the Prevention of Child Abuse, Denver, CO	Ongoing
9-3-87	"Early Intervention Project", by Bill Horner, D.S.W., School of Social Work and Human Services, Eastern Washington University, Cheney, WA	Ongoing

<u>Date of Receipt</u>	<u>Proposal Title and Principal Investigator</u>	<u>Current Status</u>
9-10-87	"The Childhaven Project: Research on Prevention and Intervention Policies for Families of Handicapped and At-Risk Children Who are Abused or Neglected", by Eugene Edgar, Ph.D., Experimental Education Unit, University of Washington, Seattle, WA	Ongoing
9-16-87	"AIDS Prevention Curriculum for High-Risk Adolescents", by Robert Bidwell, M.D., University of Hawaii School of Medicine, Honolulu, HI	Ongoing
9-21-87	"Family Independence Program Baseline Survey", by David Pavelchek, Office of Research and Data Analysis, Department of Social and Health Services, Olympia, WA	Cancelled 4-19-89
10-2-87	"Assaultive Resident Behavior Relating to Employee Injuries", by Elizabeth Wensley, Fircrest and Rainier Schools, Department of Social and Health Services, Seattle, WA	Completed 12-15-88
10-28-87	"An Analysis of the Washington State School Scoliosis Screening Program", by Robert L. Davis, M.D., Health Information Division, Department of Health, Olympia, WA	Completed 12-20-89
11-2-87	"Survey of Juveniles in Custody", by Lawrence McGinn, M.A., Demographic Surveys Division, Bureau of the Census, Washington, D.C.	Completed 10-17-88
11-4-87	"Centers for Disease Control (Blinded) HIV Seroprevalence Studies", by William Lafferty, M.D., HIV/AIDS and Infectious Diseases, Department of Health, Seattle, WA	Ongoing

<u>Date of Receipt</u>	<u>Proposal Title and Principal Investigator</u>	<u>Current Status</u>
12-2-87	"Evaluation of the Culturally Enhanced Mental Health Projects", by Joseph Scott, Ph.D., Department of Sociology, University of Washington, Seattle, WA	Completed 3-9-89
12-18-87	"Efficacy of an Electron Generator in Reduction of Symptoms Attributable to Suboptimal Indoor Air Quality", by William Daniell, M.D., M.P.H., Department of Environmental Health, University of Washington, Seattle, WA	Completed 1-30-90
12-18-87	"Washington State Longitudinal Study", by Greg Weeks, Ph.D., Washington State Institute for Public Policy, The Evergreen State College, Olympia, WA	Ongoing
12-21-87	"Prospects Versus Progress in Supported Employment", by Joseph Stowitschek, Ed.D., Transition Institute, University of Washington, Seattle, WA	Cancelled 6-21-89
12-22-87	"Mental Health Division Case Management Demonstration Evaluation", by Sharon Estee, Ph.D., Office of Research and Data Analysis, Department of Social and Health Services, Olympia, WA	Completed 5-8-90
1-27-88	"Evaluation of the Key States Initiative", by Michael de Marr, Touche Ross and Company, Seattle, WA	Cancelled 4-19-89
2-1-88	"Compassionate Use of Clozapine", by Singa Krishnamooriti, M.D., Western State Hospital, Ft. Steilacoom, WA	Cancelled 4-19-89
3-2-88	"Office VDT Use and Reported Symptoms", by Harvey Checkoway, Ph.D., Department of Environmental Health, University of Washington, Seattle, WA	Completed 5-3-89

<u>Date of Receipt</u>	<u>Proposal Title and Principal Investigator</u>	<u>Current Status</u>
3-3-88	"Comparison of Charges and Patient Characteristics Between Teaching and Non-Teaching Settings for the Delivery of Obstetrical Care", by Gilad Gordon, M.D., Clinical Scholars Program, University of Washington, Seattle, WA	Completed 4-4-90
3-10-88	"Preventing Sexual Victimization of Young Children: Sex Offender Sub-Study", by Steven Wolf, M.Ed., Northwest Treatment Associates, Seattle, WA	Ongoing
3-25-88	"Sexual Allegations Project", by Nancy Thoennes, Ph.D., Research Unit, Association of Family and Conciliation Courts, Denver, CO	Completed 3-20-89
3-29-88	"The Quality of Prenatal Care Received by Medicaid Beneficiaries in Prepaid Health Plans in Washington State", by James Kreiger, M.D., Clinical Scholars Program, University of Washington, Seattle, WA	Completed 2-27-90
3-30-88	"Seattle Urban League/POCAAN AIDS Knowledge and Attitude Survey", by Karen Hartfield, M.P.H., Seattle Urban League, Seattle, WA	Completed 3-20-89
4-7-88	"Pregnancy Complications and Obstetrical Outcomes of Homeless Women in Seattle/King County", by Edythe Schlosstein, School of Public Health, University of Washington, Seattle, WA	Cancelled 5-2-89
4-29-88	"Northwest Regional Primary Care Association Community/Migrant Health Centers HIV Seroprevalence Study and Attitude, Knowledge and Behavior Survey", by Jayne Leet, M.B.A., NWRPCA, Seattle, WA	Completed 11-28-89

<u>Date of Receipt</u>	<u>Proposal Title and Principal Investigator</u>	<u>Current Status</u>
5-16-88	"Determining Developmental Status of Child Protective Services Clients", by Margaret West, Ph.D. Child Development and Mental Retardation Center, University of Washington, Seattle, WA	Completed 7-19-89
5-20-88	"Prevention and Treatment of Rural Child Sexual Abuse", by JoAnn Ray, Ph.D., School of Social Work, Eastern Washington University, Cheney, WA	Completed 2-27-89
5-31-88	"Medicaid Transfer of Assets Study", by Steve Moses, Department of Health and Human Services, Seattle, WA	Completed 8-9-89
6-15-88	"Educating for Ownership: The Use of Nonformal Education in the Fountain House Model of Psychiatric Rehabilitation", by Charles Kinzel, M.A., College of Education, University of Washington, Seattle, WA	Completed 3-27-89
6-23-88	"Center for Disease Control (Non-Blinded) HIV Seroprevalence Studies", by William Lafferty, M.D., HIV/AIDS and Infectious Diseases, Department of Health, Seattle, WA	Ongoing
6-27-88	"Evaluation of Intensive Protective Payees for ADATSA Clients", by Aaron Lowin, Ph.D., Office of Research and Data Analysis, Department of Social and Health Services, Olympia, WA	Completed 5-23-90
7-8-88	"Correlation of Autopsy Findings and Epidemiologic Data in Infants Who Die of Sudden Infant Death Syndrome (SIDS)", by Abraham Bergman, M.D., Department of Pediatrics, Harborview Medical Center, University of Washington, Seattle, WA	Ongoing

<u>Date of Receipt</u>	<u>Proposal Title and Principal Investigator</u>	<u>Current Status</u>
7-14-88	"Seat Belt Effectiveness for Pregnant Women and Their Fetuses Involved in Motor Vehicle Crashes", by Marsha Wolf, Ph.D., Harborview Injury Prevention and Research Center, University of Washington, Seattle, WA	Ongoing
7-28-88	"1988 National Maternal and Infant Health Survey", by Paul Placek, Ph.D., National Center for Health Statistics, Hyattsville, MD	Ongoing
7-28-88	"Teen Parent Victimization Study", by Debra Boyer, Ph.D., Washington Alliance Concerned with School Age Parents, Seattle, WA	Cancelled 9-28-88
7-29-88	"Prevention of Lower Extremity Amputations Associated With Diabetes Mellitus in High Risk Veterans", by Linda Haas, M.N., Veterans Administration Medical Center, Seattle, WA	Ongoing
8-1-88	"Subjective and Objective Aspects of Loneliness in Depressed Elders and Relation to Suicide Risk", by Sally Plumly, R.N., Department of Psychosocial Nursing, University of Washington, Seattle, WA	Completed 11-17-89
8-2-88	"Parental Caregiving Stress in High Risk Parents with Young Children", by Kristen Knighton, School of Social Work, University of Washington, Seattle, WA	Pending
8-3-88	"Medical Care of Washington State DD Clients", by Robert Aldrich, M.D., Division of Congenital Defects, CH & MC, Seattle, WA	Cancelled 9-28-88
8-3-88	"Evaluation of an Institutional Treatment Program for Behaviorally and Emotionally Disturbed Juvenile Offenders", by Lisa Kimmerly, M.S.W., School of Social Work, University of Washington, Issaquah, WA	Completed 7-31-89

<u>Date of Receipt</u>	<u>Proposal Title and Principal Investigator</u>	<u>Current Status</u>
9-7-88	"Washington State Sexually Transmitted Diseases (STD) Knowledge and Opinion Survey", by Leah Cochran, HIV/AIDS and Infectious Diseases, Department of Health, Olympia, WA	Completed 6-1-89
9-14-88	"Medical Care of Washington State DD Clients", by Robert Aldrich, M.D., Division of Congenital Defects, CH & MC, Seattle, WA	Ongoing
9-16-88	"Teen Parent Victimization Study" by Debra Boyer, Ph.D., Washington Alliance Concerned with School Age Parents, Seattle, WA	Completed 11-16-89
9-27-88	"A Study of the Effectiveness of an Electronic Intervention Tool With Youth Offenders", by Hy Resnick, Ph.D., School of Social Work, University of Washington, Seattle, WA	Cancelled 4-19-89
9-30-88	"Utilization of the Extended Data Base for Quantification and Analysis of Injuries in Medicaid Recipients Under Sixteen Years of Age", by Mitchell Peterson, B.A., School of Public Health, University of Washington, Seattle, WA	Ongoing
10-21-88	"Factors Related to Compliance with Recommendations Upon Discharge From a Children's Inpatient Psychiatric Unit", by Jan Kruper, Ph.D., Department of Psychiatry and Behavioral Sciences, University of Washington, Seattle, WA	Cancelled 1-8-90
10-26-88	"Continuum of Care Pilot Project Evaluation", by Donna Schram, Ph.D., Urban Policy Research, Seattle, WA	Ongoing
11-1-88	"Washington State Trauma System Study", by Janet Griffith, M.A., Washington Trauma Care Study Project, Department of Health, Olympia, WA	Ongoing

<u>Date of Receipt</u>	<u>Proposal Title and Principal Investigator</u>	<u>Current Status</u>
11-7-88	"Family Independence Program Evaluation: Child Care Survey", by Felix D'Allesandro, M.A., Family Independence Program, Department of Social and Health Services, Olympia, WA	Cancelled 1-8-90
11-22-88	"Evaluation of Vote Project", by Janet Ries, Ph.D., Office of Research and Data Analysis, Department of Social and Health Services, Olympia, WA	Completed 5-3-89
11-30-88	"Double-Blind, Dose-Ranging Trial Comparing Haloperidol and Placebo in Hospitalized Patients with an Acute Exacerbation of Chronic Schizophrenia", by John Chiles, M.D., Harborview Medical Center, University of Washington, Seattle, WA	Cancelled 1-20-89
12-16-88	"Alzheimer's Disease Genetic Linkage Study", by Thomas Bird, M.D., School of Medical Neurology, University of Washington, Seattle, WA	Ongoing
12-20-88	"Evaluation of the Family Independence Program (FIP)", by Lee Bawden, Ph.D., The Urban Institute, Washington, D.C.	Ongoing
12-21-88	"Teen Parent Project", by Carol Williams, Snohomish County Human Services Department, Everett, WA	Cancelled 4-19-89
12-30-88	"Obstetrical Access Project", by Laura-Mae Baldwin, M.D., M.P.H., Department of Family Medicine, University of Washington, Seattle, WA	Ongoing
1-18-89	"Profiles of Medicaid Nursing Home Residents in Washington State: 1985-1987", by Nancy Packard, Ph.D., School of Nursing, University of Washington, Seattle, WA	Completed 4-19-90

<u>Date of Receipt</u>	<u>Proposal Title and Principal Investigator</u>	<u>Current Status</u>
1-26-89	"Evaluation of Key States Initiative", by Michael de Maar, Touche Ross and Company, Seattle, WA	Ongoing
1-27-89	"Victimization and Other Risk Factors for Child Maltreatment Among School-Age Parents: A Longitudinal Study", by Debra Boyer, Ph.D., Washington Alliance Concerned with School Age Parents, Seattle, WA	Ongoing
1-30-89	"Kitsap Physicians Service (KPS)-Sound Care Plan (SCP) Evaluation", by Aaron Katz, M.P.H., School of Public Health And Community Medicine, University of Washington, Seattle, WA	Completed 12-27-89
2-6-89	"Knowledge, Attitudes, Beliefs and Behavior Survey: South Asian Community in Seattle and King County", by Hector Fernandes, Washington South Asian Council, Seattle, WA	Completed 2-27-90
2-13-89	"South King County Health Access Survey", by Nancy Peterfreund, M.H.A., Seattle-King County Department of Public Health, Seattle, WA	Ongoing
2-27-89	"Prevalence of Low Birthweight in the Siblings of Infants Affected By Both Low Birthweight and Malformation", by Eugene Takahashi, Ph.D., Health Information Division, Department of Health, Olympia, WA	Ongoing
3-1-89	"A Feasibility Study to Determine the Applicability of New Dental Preventative Techniques in Rehabilitation Settings", by Doris Stiefel, D.D.S., M.S., School of Dentistry, University of Washington, Seattle, WA	Ongoing
3-10-89	"Teen Parent Project", by Richard Weatherly, Ph.D., School of Social Work, University of Washington, Seattle, WA	Ongoing

<u>Date of Receipt</u>	<u>Proposal Title and Principal Investigator</u>	<u>Current Status</u>
3-17-89	"AIDS Knowledge, Attitudes, and Behaviors Among Indian Youth", by Nancy Peterfreund, M.H.A., Seattle Indian Health Board, Seattle, WA	Ongoing
4-17-89	"Whole Blood Serotonin in an Incarcerated Delinquent Population", by Jennifer Vincent, M.D., School of Medicine, University of Washington, Seattle, WA	Ongoing
4-27-89	"A Comprehensive Treatment Approach for Drug Addicted Pregnant Women: A Longitudinal Study of the Effectiveness of Outpatient Versus Residential Drug Treatment", by Heather Watts, M.D., Department of Obstetrics and Gynecology, University of Washington, Seattle, WA	Pending
4-28-89	"Evaluation of HIV Pre and Post Test Counselor Training and a Subsequent Educational Intervention Using Simulated Patients as the Evaluators", by Phillip Rakestraw, Ph.D., VAMC American Lake, Tacoma, WA	Completed 5-7-90
5-4-89	"Developing an Outcome-Oriented Research Capacity in Washington State's Mental Health Agency, and Using That Capacity to Evaluate a Major Statewide Systems Change" by Aaron Lowin, Ph.D., Office of Research and Data Analysis, Department of Social and Health Services, Olympia, WA	Cancelled 10-18-89
6-15-89	"Prenatal Cocaine Use and Congenital Urinary Anomalies", by De-kun Li, M.D., M.P.H., Fred Hutchinson Cancer Research Center, Seattle, WA	Ongoing

<u>Date of Receipt</u>	<u>Proposal Title and Principal Investigator</u>	<u>Current Status</u>
6-16-90	"FAS Prevalence Study for Four Indian Reservations in the State of Washington", by Ann Pytkowicz Streissguth, Ph.D., Department of Psychiatry & Behavioral Sciences, University of Washington, Seattle, WA	Ongoing
6-19-89	"4.10 Federal Grant: Impact of Investigation", by Diana English, Ph.D., Children and Family Services, Department of Social and Health Services, Olympia, WA	Ongoing
7-19-89	"Selective Hospital Contracting Program Evaluation", by Bob Robinson, Ph.D., Health Information Division, Department of Health, Olympia, WA	Completed 5-7-90
7-21-89	"Deterring Child Abuse and Neglect: A 10-Year Follow-Up Study" by Roderick Durkin, Ph.D., Childhaven, Seattle, WA	Cancelled 12-12-89
7-28-89	"A Follow-up Mortality Study of Children Residing Near the ASARCO Smelter in Ruston, Washington", by Floyd Frost, Ph.D., Environmental Health Division, Department of Health, Olympia, WA	Ongoing
8-4-89	"Electronic Benefit Transfer (EBT) Evaluation Project", by Sharon Estee, Ph.D., Office of Research and Data Analysis, Department of Social and Health Services, Olympia, WA	Ongoing
8-7-89	"FIP Interim Review Project", by John Whitbeck, Ph.D., Office of Research and Data Analysis, Department of Social and Health Services, Olympia, WA	Ongoing
8-8-89	"Identification of the Learning Disabled Within a Chemically Dependent Population", by Dick Andrews, M.A., Washington State Council on Alcoholism, Bellevue, WA	Cancelled 12-8-89

<u>Date of Receipt</u>	<u>Proposal Title and Principal Investigator</u>	<u>Current Status</u>
9-14-89	"Teaching Communication Within Naturally Occurring Activities: Generalization and Maintenance of Mands", Timothy Cullinan, M.S., Fircrest School, Department of Social and Health Services, Seattle, WA	Ongoing
10-13-89	"A Longitudinal Assessment of Early Onset Psychotic Disorders", by Jon McClennan, M.D., Child Study Treatment Center, Department of Social and Health Services, Tacoma, WA	Pending
10-24-89	"Effects of Long Term Storage of DNA on Specimen Collection Paper", Stephen Lijoi, M.S., Lifecodes Corporation, Valhalla, NY	Ongoing
10-25-89	"A Comparison of Stress and Burn-out Between Teachers and Service Workers", by Juanita Kolashinski, Department of Education, Whitworth College, Spokane, WA	Ongoing
10-26-89	"Financial Service Specialist (FSS) Interviewing Training Follow-Up", by D. Merilee Clunis, Ph.D., Seattle Training Center, Seattle, WA	Cancelled 11-27-89
10-27-89	"The Effects of Ascorbic Acid on the Therapeutic Efficacy of Neuroleptics", by Laura White, B.A., Harborview Medical Center, University of Washington, Seattle, WA	Ongoing
11-1-89	"Building on Your Dependable Strengths", by Charles Morgan, M.A., Mental Health/North, Seattle, WA	Ongoing
11-2-89	"Examination of the Degree of Attachment to Parent of Abused Adolescents in Comparison with Non-Abused Adolescents"	Disapproved 11-28-89

<u>Date of Receipt</u>	<u>Proposal Title and Principal Investigator</u>	<u>Current Status</u>
11-29-89	"Birth Outcome Analysis for Division of Medical Assistance Recipients (FY 1989), by Dan Conlon, M.S., Division of Medical Assistance, Department of Social and Health Services, Olympia, WA	Ongoing
11-30-89	"National Institute of Mental Health Supported Housing Demonstration Project: National Evaluation", by Gary Johnson, M.S., Mental Health Division, Department of Social and Health Services, Olympia, WA	Ongoing
12-11-89	"Evaluating the Long-Term Impact of an Early Intervention Program for Abused and Neglected Children: A Follow-up Study", by Roderick Durkin, Ph.D., Childhaven, Seattle, WA	Ongoing
12-15-89	"Syringe Exchange and the New Drug Injector", by Hollis Hagan, M.P.H., Tacoma-Pierce County Health Department, Tacoma, WA	Ongoing
1-5-90	"Is Hairy-Cell Leukemia an Occupational Disease?", by Samuel Milham, Jr., M.D., M.P.H., Health Information Division, Department of Health, Olympia, WA	Ongoing
1-12-90	"Examination of the Degree of Attachment to Parent for Abused and Non-Abused Adolescents", by Richard Jacks, Ph.D., Counseling Center, Whitman College, Walla Walla, WA	Ongoing
1-18-90	"Exploring the Links Between Animal Cruelty and Violence to Others", by Kristin Sims, M.A., Center for Child Abuse Prevention Services, Tacoma, WA	Ongoing

<u>Date of Receipt</u>	<u>Proposal Title and Principal Investigator</u>	<u>Current Status</u>
1-24-90	"Relapse or Recovery: Alcohol/Drug Treatment Programs in the Washington State Division of Juvenile Rehabilitation", by Vicente Acosta, Education Department, Central Washington University, Ellensburg, WA	Ongoing
1-25-90	"Evaluating a Multidisciplinary Team Investigational Interviewing Program for Child Abuse Victims", by Barbara Wood, Ph.D., Department of Psychology, Gonzaga University, Spokane, WA	Ongoing
2-2-90	"An Investigation of Schizophrenic Patients' Linguistic Comprehension and Production Abilities", by Anat Goren, Ph.C., Department of Speech and Hearing Sciences, University of Washington, Seattle, WA	Pending
2-6-90	"Morbidity and Health Care Costs of Hepatitis A in Washington", by Thomas Eng, V.M.D., M.P.H., Communicable Disease Epidemiology, Department of Health, Seattle, WA	Ongoing
2-23-90	"Model Community Response to Child Sexual Assault Pilot Projects", by Debora Boeck, Ed.D., Educational Management Consultants, Freeland, WA	Pending
2-26-90	"Investigation of the Roots of Dysfunctional Behavior in the Backgrounds of GA-U Clients Eligible Due to Disability Based on Mental Health Problems"	Disapproved 5-28-90
3-13-90	"First Steps Database (FY 1989, FY 1990 and FY 1991)", by M.L. Cawthon, M.D., Office of Research and Data Analysis, Department of Social and Health Services, Olympia, WA	Ongoing

<u>Date of Receipt</u>	<u>Proposal Title and Principal Investigator</u>	<u>Current Status</u>
3-20-90	"First Steps Market Penetration Study", by Dario Longhi, Ph.D., Office of Research and Data Analysis, Department of Social and Health Services, Olympia, WA	Ongoing
4-25-90	"Vocational Services for Long-Unemployed Former Drug Addicts", by Aaron Lowin, Ph.D., Office of Research and Data Analysis, Department of Social and Health Services, Olympia, WA	Pending
4-26-90	"Vocational Rehabilitation: Two Models", by Paul Peterson, Ph.D., The Washington Institute, Department of Social and Health Services, Ft. Steilacoom, WA	Pending
5-16-90	"Study of Alcohol and Substance Abuse Programs for Adolescents", by Charles Morgan, Ph.D., Office of Research and Data Analysis, Department of Social and Health Services, Olympia, WA	Pending
6-1-90	"Evaluating the Impact of the Special Population Adult Family Home on AIDS Medicaid Charges and Hospital Utilization", by Wayne McCormick, M.D., M.P.H., Department of Medicine, Geriatrics, University of Washington, Seattle, WA	Ongoing
6-4-90	"America Responds to AIDS Continuous Tracking Study", by Terry Elliott, M.S., HIV/AIDS and Infectious Diseases, Department of Health, Olympia, WA	Ongoing
6-6-90	"Sentinel Counties Surveillance for Acute Viral Hepatitis and Epidemiology of Non-A, Non-B Hepatitis (Hepatitis C) Infection", by Allene Mares, M.A., M.P.H., Communicable Disease Section, Tacoma-Pierce County Health Department, Tacoma, WA	Ongoing

<u>Date of Receipt</u>	<u>Proposal Title and Principal Investigator</u>	<u>Current Status</u>
6-7-90	"A Developmental Study of the Effect of Passive Exposure to Cocaine in Utero on the Speech and Language Skills of Pre-schoolers", by Jeanne Johnson, Ph.D., Department of Speech and Hearing Sciences, Washington State University, Pullman, WA	Pending
6-8-90	"Effectiveness of Drug Testing in the Monitoring and Treatment of Juvenile Offenders on Community Supervision", by John Steiger, Ph.D., Children's Administration, Management Services Division, Department of Social and Health Services, Olympia, WA	Pending
6-11-90	"Schizophrenia and Catecholamine System Genes", by Leonard Heston, M.D., The Washington Institute, Department of Social and Health Services, Ft. Steilacoom, WA	Pending
6-12-90	"Effectiveness of Intensive Case Management for Homeless Adolescents", by Ana Mari Cauce, Ph.D., Department of Psychology, University of Washington, Seattle, WA	Pending
6-13-90	"Occupational Therapy Functional Assessment Compilation Tool (OTFACT) Field Testing", by Joan Koster, OTR/L, Rehabilitation Services, Western State Hospital, Ft. Steilacoom, WA	Ongoing
6-14-90	"Independent Living Skills Needs Assessment", by Diana English, Ph.D., Children, Youth and Family Services, Department of Social and Health Services, Olympia, WA	Pending
6-15-90	"Defining the Outcomes of Patients Hospitalized for Low Back Pain Using Linked CHARS Data", by Daniel Cherkin, Ph.D., Back Pain Assessment Team, University of Washington, Seattle, WA	Pending

