

Trends in Social Service Use: Spokane County

For State Fiscal Year 2008



Photo courtesy of Microsoft, free domain

— *The County Chartbook Collection* —

RDA REPORT NUMBER 3.35.32



Introduction and Roadmap

THIS COUNTY CHARTBOOK is the result of an “uncommon partnership” between the state of Washington and Washington’s county governments. It presents state-collected and analyzed human service information in a format that meets county government needs for planning, monitoring and funding their human service programs.

Within the Chartbook, DSHS presents some integrated risk, service use and geographic information in a standard format by county, for six client subgroups.

These subgroups are:

- Newborns, infants and their birth parents
- Youth with various levels of adverse childhood experiences in their birth families
- Youth with behavioral health needs (mental health and alcohol/drug treatment)
- Adults with behavioral health needs (mental health and alcohol/drug treatment)
- Youth and adults with criminal justice involvement
- Working-age adults and children with disabling health conditions

For each subgroup, we present the following:

- Demographics for the DSHS client subgroup, in SFY 2008
- DSHS service use among that set of clients, in SFY 2008
- DSHS client-based risk factors for that set of clients, in SFY 2008
- A map showing areas of county concentrations of that set of clients, in SFY 2008

This “working prototype” of the Chartbook is funded by the Substance Abuse and Mental Health Service Administration (SAMSHA), through the last year of the Washington State Mental Health Transformation Project (Mental Health Transformation State Incentive Grant Award No. 6 U79 SM57648). If the Chartbook proves useful to counties, the DSHS Research and Data Analysis Division will work with the Washington Association of Counties to develop a stable, equitable way to continue funding it.

The link to DSHS Research and Data Analysis website, which contains DSHS service and cost data for all DSHS clients is <http://clientdata.rda.dshs.wa.gov/>.

CONTRIBUTORS

Elizabeth Kohlenberg, PhD • Sharon Estee, PhD • David Mancuso, PhD • Barbara Lucenko, PhD • Irina Sharkova, PhD • Rebecca Yette, MCS • Sawir Yakup, MS
Laurie Cawthon, MD, MPH • Peter Woodcox • Kathryn Beall • Jane Zerbe • Barbara Felver, MES,MPA



CONTENTS | Study Populations

[TO START](#)
NOVEMBER 2011

INFANTS
& PARENTS



1 Infants and Parents

[INTRODUCTION](#) [DEMOGRAPHICS](#) [DSHS SERVICES](#) [RISK FACTORS](#) [POPULATION MAP](#)

Demographics for DSHS newborns, births, and infants under one year and their birth mothers. DSHS services, risks and a map for DSHS infants under one.

YOUTH
& FAMILIES



2 Adverse Childhood Experiences

[INTRODUCTION](#) [DEMOGRAPHICS](#) [DSHS SERVICES](#) [RISK FACTORS](#) [POPULATION MAP](#)

Demographics, services, risks and a map for DSHS youth with various numbers of Adverse Childhood Experiences (ACEs).

YOUTH
BEHAVIOR



3 Youth with Behavioral Health Needs

[INTRODUCTION](#) [DEMOGRAPHICS](#) [DSHS SERVICES](#) [RISK FACTORS](#) [POPULATION MAP](#)

Demographics, services, risks and a map for DSHS youth with mental health and/or alcohol/drug needs.

ADULT
BEHAVIOR



4 Adults with Behavioral Health Needs

[INTRODUCTION](#) [DEMOGRAPHICS](#) [DSHS SERVICES](#) [RISK FACTORS](#) [POPULATION MAP](#)

Demographics, services, risks and a map for DSHS adult clients with mental health and/or alcohol/drug treatment needs.

CRIMINAL
JUSTICE



5 Criminal Justice

[INTRODUCTION](#) [DEMOGRAPHICS](#) [DSHS SERVICES](#) [RISK FACTORS](#) [POPULATION MAP](#)

Demographics, services, risks and a map for DSHS youth and adult clients associated with court filings during SFY 2008.

PERSONS WITH
DISABILITIES



6 Persons with Disabilities

[INTRODUCTION](#) [DEMOGRAPHICS](#) [DSHS SERVICES](#) [RISK FACTORS](#) [POPULATION MAP A](#) [POPULATION MAP B](#)

Demographics, services, risks data and two maps for persons enrolled in Disability-related Medicaid coverage.

7 Technical Notes

[TABLE B NOTES \(1\)](#) [TABLE B NOTES \(2\)](#) [TABLE C NOTES](#)



PART 1 | DSHS Infants and Parents

THIS SECTION concentrates on newborns and infants under one who received DSHS services in SFY 2008 (July 1, 2007 to June 30, 2008) and their birth parents.

Table 1a shows demographic information for DSHS newborns and their birth mothers, and for DSHS infants under the age of one and their birth mothers.

Table 1b reports on the DSHS services provided during SFY 2008 to the infant under one and their birth parents.

Table 1c reports on “risks” for the parents and infants under one who are DSHS clients. Knowing these risks may help the county in planning for social and health services for these families. The key risk factors reported here include injuries, homelessness, behavioral health needs, employment, arrests and convictions.

The map of DSHS infant clients under one shows the parts of a county with high concentrations per square mile of DSHS infant clients. This suggests places where service centers focused on those infants and their families may be located.

Data Sources: Data on births and newborns in Table 1a are drawn from the First Steps Database. The rest of the data in the tables and the map—for infants under a year and their birth parents—are drawn from the DSHS Integrated Client Database. Both databases use birth certificates to match parents and babies. The Integrated Client Database also adds matches from child support enforcement encounters.

For additional First Steps Database birth statistics and details about maternity care access, visit our County Profiles at the first link below. For recent First Steps data from the state's Health Care Authority, please use the second link.

LINK TO COUNTY PROFILES: <http://publications.rda.dshs.wa.gov/1407/>

LINK TO FIRST STEPS DATA: <http://hrsa.dshs.wa.gov/firststeps/data.shtml>





1a. Demographics for DSHS Infants and Their Mothers

State Fiscal Year 2008

This table shows demographic information on two slightly different groups of DSHS infants and mothers. The first part of the table shows births to DSHS clients during SFY 2008 (July 1, 2007 to June 30 2008), and includes the number of newborns, the number born with low birth weights, and the birth mothers of those newborns. The county for newborns is based on the mother's county of residence at the time of delivery. Data for these births comes from the DSHS RDA First Steps Database. The last part of the table describes infants under one year, and their birth mothers. These infants and birth mothers are assigned to the county if the infant's last month of service in SFY 2008 was in that county. The last part is drawn from the DSHS RDA Integrated Client Database. Both databases use birth certificates to match babies and parents, and the Integrated Client Database also adds baby-parent matches from child support enforcement data.

DSHS Newborns, Infants, and Their Birth Moms										
Race/Ethnicity	BIRTHS TO MEDICAID CLIENTS ¹						DSHS INFANTS AND MOMS			
	Newborns <i>Total = 3,244</i>		Low Birth Weight <i>Total = 174</i>		Birth Moms <i>Total = 3,298</i>		Infants Under 1 Year <i>Total = 3,619</i>		Birth Moms <i>Total = 3,589</i>	
	PERCENT	NUMBER	PERCENT	NUMBER	PERCENT	NUMBER	PERCENT	NUMBER	PERCENT	NUMBER
Any minority	17.5%	567	19.5%	34	19.0%	626	16.4%	592	18.8%	674
White only	82.5%	2,676	80.5%	140	80.1%	2,642	67.5%	2,444	75.0%	2,691
Unknown	0.0%	1	0.0%	0	0.9%	30	16.1%	583	6.2%	224
Minority Detail²										
Hispanic	5.1%	167	4.0%	7	5.2%	170	5.0%	181	5.8%	209
American Indian/Alaska Native	5.5%	180	6.3%	11	5.6%	185	5.6%	204	7.7%	277
Asian/Pacific Islander	3.9%	127	4.6%	8	3.9%	129	2.6%	95	3.5%	125
African American	2.8%	91	4.6%	8	2.8%	93	4.2%	152	3.1%	111
Age										
Average age of moms in years	n/a	n/a	n/a	n/a	24.8	3,298	n/a	n/a	24.9	3,589
Moms under age 19	n/a	n/a	n/a	n/a	8.6%	285	n/a	n/a	8.2%	295

SPOKANE COUNTY



¹ DATA SOURCE: The First Steps Database links vital statistics from birth and death certificates to information on Medicaid-paid maternity services and Medicaid eligibility. Medicaid status is determined for the mother at the time of delivery. ² Clients who reported belonging to more than one race/ethnicity group are counted in each reported group. As a result, the minority detail categories will sum to more than the percent for the "Any minority" group.



1b. DSHS Service History

State Fiscal Year 2008

This table reports on various DSHS services provided to infants under one in SFY 2008 and their birth parents. Data are provided only for those birth parents who can be identified in the DSHS Integrated Client Database from Washington State records of births and/or child support enforcement. Infants and their birth parents are included in a county report if the infant is identified as residing in the county during their last month of DSHS service in SFY 2008.

DSHS Infants • Parents						
DSHS Services	Infants <i>Total = 3,619</i>		Birth Moms <i>Total = 3,589</i>		Birth Dads <i>Total = 2,219</i>	
	PERCENT	NUMBER	PERCENT	NUMBER	PERCENT	NUMBER
Medical Coverage	99%	3,575	94%	3,380	44%	966
Basic Food	49%	1,762	63%	2,255	65%	1,439
Child Support Enforcement	25%	904	49%	1,760	61%	1,364
TANF and State Family Assistance <i>Temporary Assistance for Needy Families</i>	28%	1,008	35%	1,261	17%	382
Refugee Assistance	0%	0	0%	1	0%	1
Economic Services <i>Any Service from Basic Food to Refugee Assistance</i>	58%	2,101	75%	2,709	95%	2,109
Children's Administration <i>In Home and Out of Home</i>	9%	308	15%	525	13%	296
Juvenile Rehabilitation	n/a	n/a	0%	2	0%	0
Disability Medicaid	2%	57	3%	99	5%	114
Disability Lifeline-Unemployable <i>formerly General Assistance</i>	n/a	n/a	0%	11	2%	35
Long Term Care	0%	0	0%	6	0%	5
Developmental Disabilities	1%	26	0%	16	0%	2
Mental Health Services from RSNs ¹	0%	0	5%	164	3%	56
Mental Health Medication Only ²	0%	2	5%	176	3%	57
Alcohol or Drug Treatment	n/a	n/a	4%	148	5%	110
Vocational Rehabilitation	n/a	n/a	1%	27	1%	29

SPOKANE COUNTY



¹ These clients received RSN services and/or community or state hospital inpatient and/or Children's Administration BRS or "other intensive" services. ² These clients received only mental health medications.



1c. Risk Factors to DSHS Infants and Parents

State Fiscal Year 2008

This table reports on “risks” seen in DSHS data for infants under one in SFY 2008, and their birth parents. Knowing these risks may help to plan for human service needs. Key risk factors reported here include injuries, homelessness, behavioral health needs, employment, arrests and convictions. Infants and their birth parents are included in a county report if the child is identified as residing in that county during their last month of DSHS service in SFY 2008. Data are provided only for those birth parents who can be identified in the DSHS Integrated Client Database from Washington State records of births and child support enforcement.

DSHS Infants • Parents									
Risks	Infants			Birth Moms			Birth Dads		
	PERCENT	NUMBER	DENOMINATOR	PERCENT	NUMBER	DENOMINATOR	PERCENT	NUMBER	DENOMINATOR
Treated for Injuries ¹	6%	224	3,575	19%	639	3,380	27%	263	966
Mental Health Need ¹	0%	4	3,575	23%	766	3,380	20%	194	966
Alcohol or Drug Need ¹	1%	20	3,575	10%	350	3,380	23%	225	966
Homeless in Past Year ²	5%	98	1,896	15%	341	2,306	17%	250	1,456
Employed ³	n/a	n/a	n/a	58%	2,091	3,589	75%	1,668	2,219
Arrested ³	n/a	n/a	n/a	3%	125	3,589	16%	347	2,219
Convicted ³	n/a	n/a	n/a	4%	157	3,589	18%	406	2,219

SPOKANE COUNTY

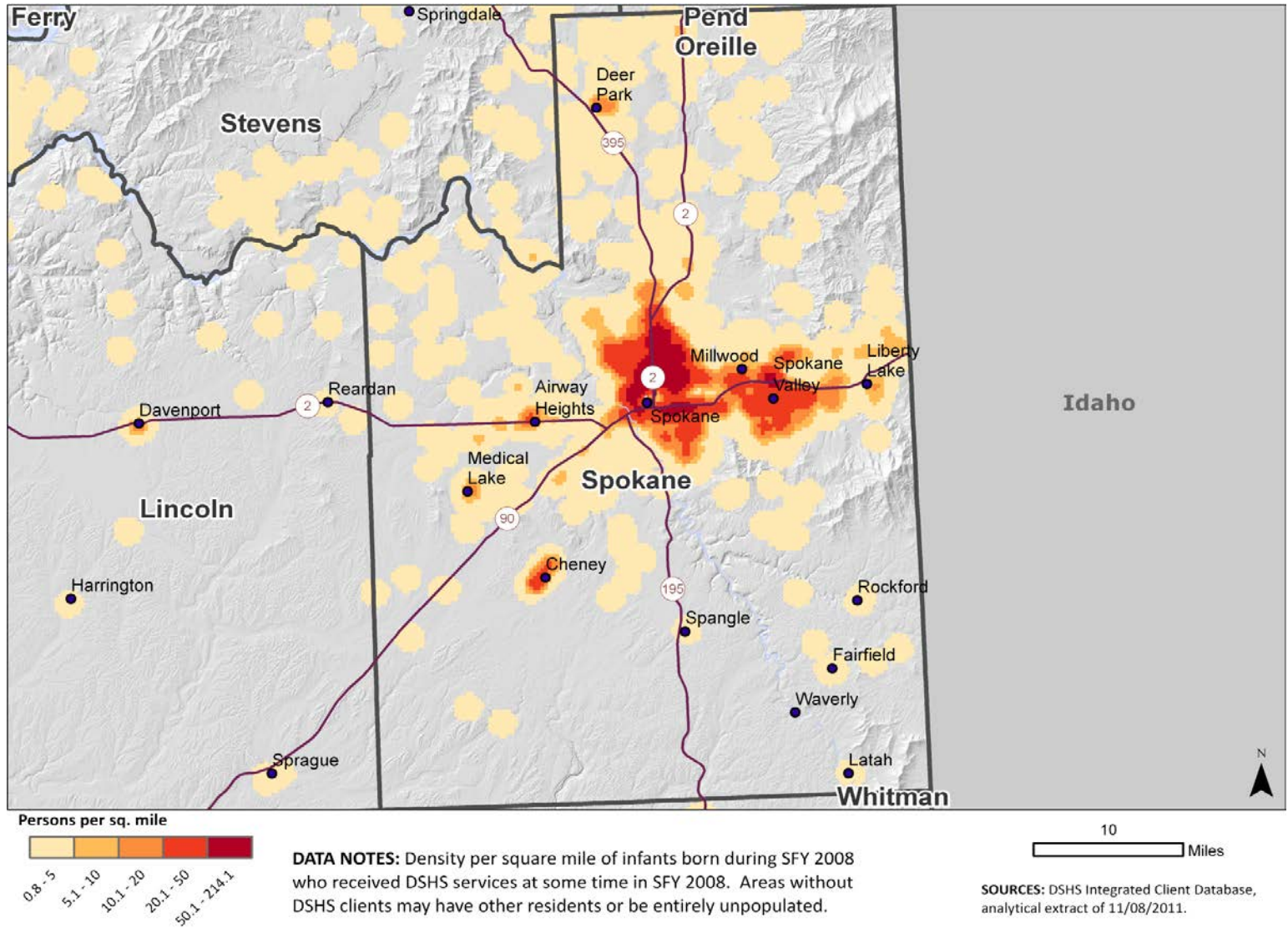


¹ Denominator is all persons with at least one month of DSHS medical coverage in SFY 2008. ² Denominator is all persons with at least one month of receipt of food assistance or a TANF or General Assistance cash grant in SFY 2008. ³ Denominator is all clients in the population.



1d. Concentrations of DSHS Infants Under One

State Fiscal Year 2008



SPOKANE COUNTY





PART 2 | Youth with High Adverse Childhood Experiences

THIS SECTION concentrates on DSHS children under 18 years of age living in the county during their last month of DSHS service in SFY 2008 who have various levels of "Adverse Childhood Experiences" (ACEs) that stem from the behavior and life circumstances of their birth parents. High levels of ACEs have been linked by national and state researchers to adverse changes in the cognitive development of children and poor adult health outcomes.*

In prior research on ACEs, Adverse Childhood Experiences have been defined by asking adults about their childhoods. For this report, ACEs are defined through administrative data maintained in the DSHS Integrated Database on the birth mothers and birth fathers of DSHS youth developed from Washington State birth certificates and support enforcement records. (Note that these children might not be living with their birth parents during SFY 2008, and it is possible that they have never lived with these birth parents).

SFY 2008 DSHS Administrative Data Definitions of ACEs

- Domestic violence arrests for the parent from July 1, 2003 to June 30, 2008
- Mental illness flag for a birth parent from July 1, 2003 to June 30, 2008
- Substance abuse flag for a birth parent from July 1, 2003 to June 30, 2008
- Arrest, conviction and/or incarceration of a birth parent from July 1, 2003 to June 30, 2008
- Any Children's Administration service for child or birth parent, including Child protective Services, Child Welfare Services, or out of home placement from July 1, 2003 to June 30, 2008
- A homeless spell during the child's lifetime, for the child or birth parents
- Death of a parent prior to July 1, 2008

The tables report on children with various levels of ACEs—those with no known ACEs, those with one or two ACEs, and those with three or more ACEs. Note that ACEs are still undercounted among DSHS clients, because they cannot be recorded completely for children whose birth parents are not included in the Integrated Client Database from Washington State birth or support enforcement records. Only children with at least one parent identified are included in this table.

Table 2a includes demographic information on DSHS youth with varying levels of ACEs.

Table 2b reports on the DSHS services provided to youth with various levels of ACEs. Details on the meanings of these services are provided in Appendix B.

Table 2c reports on the current "risk factors" experienced by DSHS youth with various levels of ACEs. They include youth rates of injury, employment, homelessness, mental health or alcohol/drug needs, arrests and convictions. Details on the meanings of the risk indicators are provided in Appendix C.

The map shows the places with high concentrations per square mile of DSHS youth with three or more ACEs. This map may be useful in locating services for these high-risk youth.

Data Sources: All data are drawn from the DSHS Integrated Client Database.

*See references and research at the Center for Disease Control website: <http://www.cdc.gov/ace/index.htm>.





2a. Client Demography for Youth with Various Levels of ACEs

State Fiscal Year 2008

This table shows demographic information for DSHS children under 18 living in the county during their last month of SFY 2008 service who have been exposed to varying levels of Adverse Childhood Experiences (ACEs) that stem from the behavior and life circumstances of their birth parents. ACEs recorded in our data include parental death; parental domestic violence arrests; parental mental illness or alcohol/drug treatment need flags; parental arrest, conviction or incarceration; a homeless spell for the child or either birth parent; a CPS referral for abuse or neglect for any child of either parent; or any other child welfare services for any child of either birth parent. Children with 3 or more ACEs are likely to be at higher risk for problems. Only children whose birth parents are recorded through Washington State birth certificates and support enforcement matches are included in this table.

DSHS Youth with Various Levels of Adverse Childhood Experiences (ACEs)						
Race/Ethnicity	DSHS CLIENTS					
	No ACEs <i>Total = 17,064</i>		1 to 2 ACEs <i>Total = 20,341</i>		3 or More ACEs <i>Total = 16,609</i>	
	PERCENT	NUMBER	PERCENT	NUMBER	PERCENT	NUMBER
Any Minority	13%	2,259	19%	3,854	28%	4,711
White Only	73%	12,392	74%	15,042	69%	11,424
Unknown	14%	2,413	7%	1,445	3%	474
Minority Detail²						
Hispanic	6%	1,035	7%	1,383	7%	1,190
American Indian/Alaska Native	2%	404	6%	1,208	13%	2,180
Asian/Pacific Islander	3%	542	3%	526	2%	291
African American	2%	399	5%	1,086	10%	1,723
Age						
Average Age	8	n/a	8	n/a	8	n/a

SPOKANE COUNTY



¹ Clients who reported belonging to more than one race/ethnicity group are counted in each reported group. As a result, the minority detail categories will sum to more than the percent for the "Any minority" group.



2b. DSHS Service History and Adverse Childhood Experiences

State Fiscal Year 2008

This table reports on the various DSHS services provided to children under 18 living in the county during their last month of DSHS service in SFY 2008 who have been exposed to varying levels of Adverse Childhood Experiences (ACEs) that stem from the behavior and life circumstances of their birth parents. ACEs recorded in our data include parental death; parental domestic violence arrests; parental mental illness or alcohol/drug treatment need flags; parental arrest, conviction or incarceration; a homeless spell for the child or either birth parent; a CPS referral for abuse or neglect for any child of either parent; or any other child welfare services for any child of either birth parent. Only children whose birth parents are recorded through Washington State birth certificates and support enforcement matches are included in this table.

DSHS Youth with Various Levels of Adverse Childhood Experiences (ACEs)

DSHS Services	No ACEs <i>Total = 17,064</i>		1 to 2 ACEs <i>Total = 20,341</i>		3 or More ACEs <i>Total = 16,609</i>	
	PERCENT	NUMBER	PERCENT	NUMBER	PERCENT	NUMBER
Medical Coverage	78%	13,371	83%	16,884	89%	14,843
Basic Food	25%	4,243	49%	9,874	65%	10,730
Child Support Enforcement	37%	6,325	55%	11,180	77%	12,714
TANF and State Family Assistance <i>Temporary Assistance for Needy Families</i>	5%	802	17%	3,461	38%	6,332
Economic Services <i>Any Service from Basic Food to Refugee Assistance</i>	56%	9,477	78%	15,943	92%	15,306
Children's Administration <i>In Home and Out of Home</i>	0%	0	12%	2,406	31%	5,155
Juvenile Rehabilitation ³	0%	11	0%	33	0%	38
Disability Medicaid	2%	302	3%	620	4%	701
Disability Lifeline-Unemployable <i>formerly General Assistance</i>	n/a	n/a	n/a	n/a	n/a	n/a
Long Term Care	n/a	n/a	n/a	n/a	n/a	n/a
Developmental Disabilities	2%	331	2%	428	2%	393
Mental Health Services from RSNs ¹	1%	234	5%	970	9%	1,532
Mental Health Medication Only ²	1%	188	2%	467	3%	443
Alcohol or Drug Treatment	0%	39	1%	144	1%	188
Vocational Rehabilitation	n/a	n/a	n/a	n/a	n/a	n/a

SPOKANE COUNTY



¹ These clients received RSN services and/or community or state hospital inpatient and/or Children's Administration BRS or "other intensive" services. ² These clients received only mental health medications. ³ Birth parents are under-represented.



2c. Risk Factors for DSHS Youth with Various Levels of ACEs

State Fiscal Year 2008

This table reports on “risks” seen in DSHS data for children under 18 in the county during their last month of SFY 2008 DSHS service, who have been exposed to varying levels of Adverse Childhood Experiences (ACEs) that stem from the behavior and life circumstances of their birth parents. ACEs recorded in our data include parental death; parental domestic violence arrests; parental mental illness or alcohol/drug treatment need flags; parental arrest, conviction or incarceration; a homeless spell for the child or either birth parent; a CPS referral for abuse or neglect for any child of either parent; or any other child welfare services for any child of either birth parent. The “risks” reported are based on the child’s **own** behavior and life circumstances. Recorded risks include the child’s own record of injuries, homelessness, behavioral health needs, employment, arrests and convictions. Only children whose birth parents are recorded through Washington State birth certificates and support enforcement matches are included in this table.

SPOKANE COUNTY

Youth with Various Levels of Adverse Childhood Experiences (ACEs)									
Risks	No ACEs			1 or 2 ACEs			3 or MORE ACEs		
	PERCENT	NUMBER	DENOMINATOR	PERCENT	NUMBER	DENOMINATOR	PERCENT	NUMBER	DENOMINATOR
Treated for Injuries ¹	16%	2,134	13,371	20%	3,455	16,884	25%	3,679	14,843
Mental Health Need ¹	6%	847	13,371	15%	2,453	16,884	22%	3,247	14,843
Alcohol or Drug Need ¹	0%	59	13,371	1%	214	16,884	3%	448	14,843
Homeless in Past Year ²	0%	0	4,308	6%	606	10,064	11%	1,237	11,355
Employed ³	3%	517	17,064	3%	593	20,341	2%	366	16,609
Arrested ³	0%	54	17,064	1%	223	20,341	2%	283	16,609
Convicted ³	1%	119	17,064	2%	357	20,341	2%	410	16,609

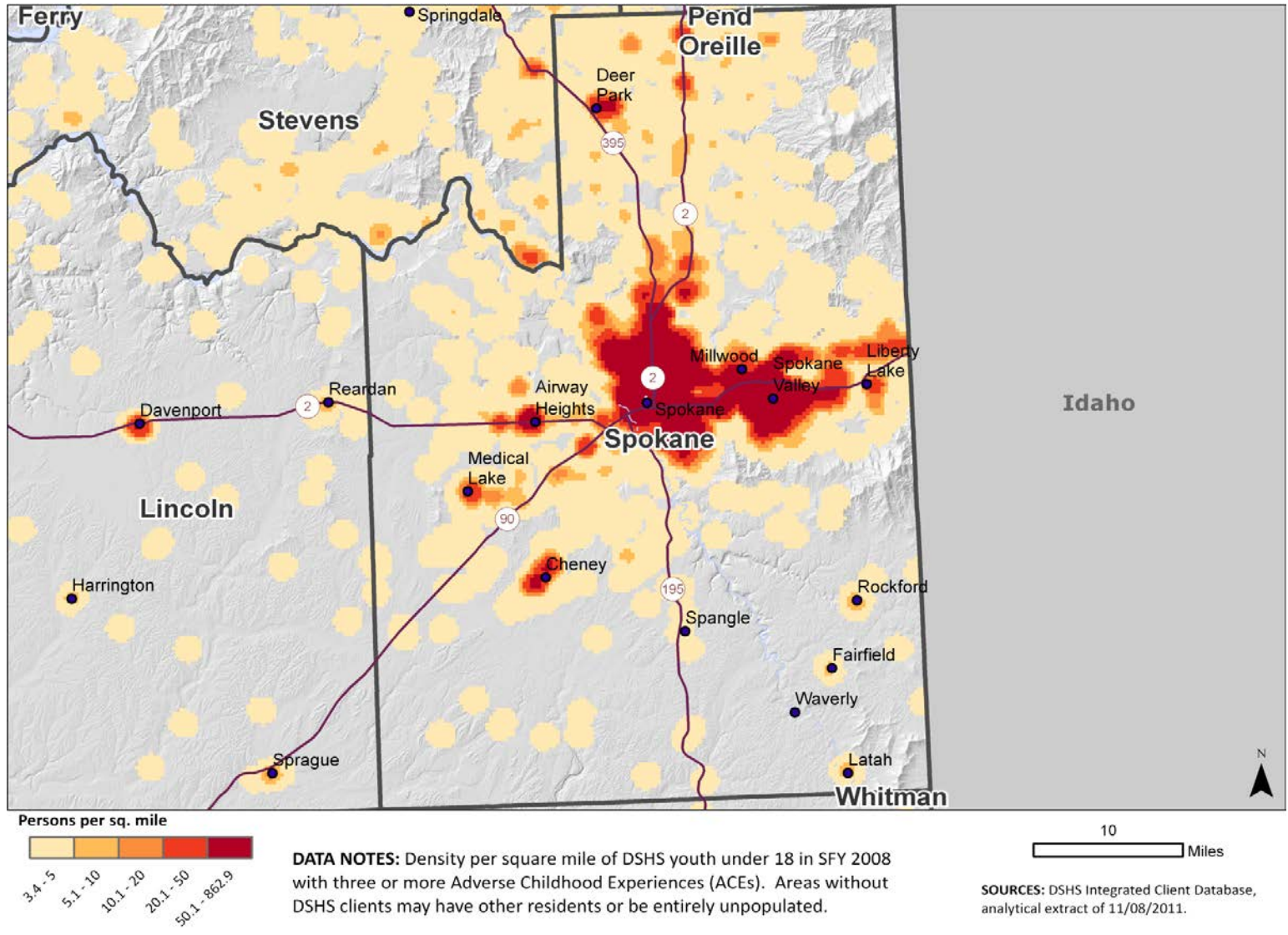


¹ Denominator is all persons with at least one month of DSHS medical coverage in SFY 2008. ² Denominator is all persons with at least one month of receipt of food assistance or a TANF or General Assistance cash grant in SFY 2008. ³ Denominator is all DSHS clients in the population.



2d. Youth with Three or More Adverse Childhood Experiences

State Fiscal Year 2008





PART 3 | DSHS Youth with Behavioral Health Needs

THIS SECTION concentrates on youth ages birth through 18 who have recently experienced a mental health need and/or alcohol/drug problems.

Recent mental health needs are indicated by any of the following appearing in health records during the previous 24 months (SFY 2007 through SFY 2008):

- Diagnoses of psychotic, bipolar, depression, anxiety, adjustment, ADHD, conduct, or impulse disorders.
- Receipt of antipsychotic, bipolar, antidepressant, antianxiety, or ADHD medications.
- Receipt of mental health services through DSHS Division of Behavioral Health and Recovery, medical providers, tribal mental health, or Behavioral Rehabilitation Services provided through the DSHS Children’s Administration.

Recent alcohol/drug problems are indicated by one of more of the following appearing in administrative records during the previous 24 months (SFY 2007 through SFY 2008):

- Diagnosis of alcohol or drug abuse or dependence, or substance-induced psychosis.
- Alcohol/drug treatment services received paid for through the DSHS Division of Behavioral Health and Recovery.
- Arrests for alcohol or drug related offenses.

For all tables, youth are included in a county report if they are identified as residing in the county during their last month of DSHS service in SFY 2008.

Table 3a includes demographic information on these youth.

Table 3b reports on the DSHS services provided to youth with broad mental illness or alcohol/drug need flags. Details on the meaning of the DSHS services are provided in Appendix B.

Table 3c reports on “risks” for the DSHS clients with high levels of behavioral health needs. Details on the meanings of the risk indicators are provided in Appendix C.

The map shows the parts of the county with high concentrations per sq. mile of DSHS youth high levels of behavioral health needs—either mental illness or alcohol/drug problems or both.

Data Sources: All data are drawn from the DSHS Integrated Client Database.





3a. Client Characteristics, Youth with Behavioral Health Needs

State Fiscal Year 2008

This table shows demographic information for children under 18 living in the county during their last month of DSHS service in SFY 2008 who have recently experienced mental illness of alcohol/drug problems. Recent mental illness is defined as one or more of the following events between July 1, 2006 and June 30, 2008: a diagnosis of psychotic, bipolar, depression, anxiety, adjustment, ADHD, conduct or impulse disorder; receipt of antipsychotic, bipolar, antidepressant, antianxiety, or ADHD medications; receipt of mental health services through DSHS Division of Behavioral Health and Recovery, medical providers, tribal mental health, or Behavioral Rehabilitation Services provided through the DSHS Children’s Administration. A recent alcohol/drug problem is defined as one or more of the following events occurring between July 1, 2006 and June 30, 2008: a diagnosis of alcohol or drug abuse, dependence, or psychosis; alcohol/drug treatment services received through the DSHS Division of Behavioral Health and Recovery; or arrests for alcohol/drug related offenses.

DSHS Youth with Behavioral Health Needs					
Race/Ethnicity	Any Mental Illness <i>Total = 9,319</i>		Alcohol/Drug Problem <i>Total = 2,113</i>		
	PERCENT	NUMBER	PERCENT	NUMBER	
Any Minority	24%	2,226	31%	654	
White Only	75%	6,982	68%	1,434	
Unknown	1%	111	1%	25	
Minority Detail¹					
Hispanic	7%	606	6%	130	
American Indian/Alaska Native	11%	1,035	17%	362	
Asian/Pacific Islander	2%	194	3%	61	
African American	7%	691	9%	198	
Age					
Average Age	12	n/a	16	n/a	

SPOKANE COUNTY



¹ Clients who reported belonging to more than one race/ethnicity group are counted in each reported group. As a result, the minority detail categories will sum to more than the percent for the “Any minority” group.



3b. DSHS Service History

State Fiscal Year 2008

This table reports on the various DSHS services provided to children under 18 living in the county during their last month of DSHS service in SFY 2008 who have recently experienced mental illness or alcohol/drug problems. Recent mental illness is defined as one or more of the following events between July 1, 2006 and June 30, 2008: a diagnosis of psychotic, bipolar, depression, anxiety, adjustment, ADHD, conduct or impulse disorder; receipt of antipsychotic, bipolar, antidepressant, anti-anxiety, or ADHD medications; receipt of mental health services through DSHS Division of Behavioral Health and Recovery, medical providers, tribal mental health, or Behavioral Rehabilitation Services provided through the DSHS Children's Administration. A recent alcohol/drug problem is defined as one or more of the following events occurring between July 1, 2006 and June 30, 2008: a diagnosis of alcohol or drug abuse, dependence, or psychosis; alcohol/drug treatment services received through the DSHS Division of Behavioral Health and Recovery; or arrests for alcohol/drug related offenses.

DSHS Youth with Behavioral Health Needs				
DSHS Services	Any Mental Illness Total = 9,319		Alcohol/Drug Problem Total = 2,113	
	PERCENT	NUMBER	PERCENT	NUMBER
Medical Coverage	95%	8,882	73%	1,542
Basic Food	53%	4,952	55%	1,155
Child Support Enforcement	63%	5,852	62%	1,301
TANF and State Family Assistance <i>Temporary Assistance for Needy Families</i>	24%	2,272	23%	482
Refugee Assistance	0%	0	0%	0
Economic Services <i>Any Service from Basic Food to Refugee Assistance</i>	79%	7,377	79%	1,659
Children's Administration <i>In Home and Out of Home</i>	30%	2,833	29%	610
Juvenile Rehabilitation	1%	73	5%	96
Disability Medicaid	13%	1,205	7%	140
Disability Lifeline-Unemployable <i>formerly General Assistance</i>	0%	45	1%	18
Long Term Care	0%	15	0%	0
Developmental Disabilities	6%	595	1%	23
Mental Health Services from RSNs ¹	37%	3,438	18%	389
Mental Health Medication Only ²	18%	1,667	5%	108
Alcohol or Drug Treatment	4%	362	38%	795
Vocational Rehabilitation	1%	76	1%	12

SPOKANE COUNTY



¹ These clients received RSN services and/or community or state hospital inpatient and/or Children's Administration BRS or "other intensive" services. ² These clients received only mental health medications.



3c. Risk Factors among DSHS Youth with Behavioral Health Needs

State Fiscal Year 2008

This table reports on “risks” seen in DSHS data for children under 18 in the county during their last month of DSHS service in SFY 2008 who have recently experienced mental illness or alcohol/drug problems. Recent mental illness is defined as one or more of the following events between July 1, 2006 and June 30, 2008: a diagnosis of psychotic, bipolar, depression, anxiety, adjustment, ADHD, conduct or impulse disorder; receipt of antipsychotic, bipolar, antidepressant, antianxiety, or ADHD medications; receipt of mental health services through DSHS Division of Behavioral Health and Recovery, medical providers, tribal mental health, or Behavioral Rehabilitation Services provided through the DSHS Children’s Administration. A recent alcohol/drug problem is defined as one or more of the following events occurring between July 1, 2006 and June 30, 2008: a diagnosis of alcohol or drug abuse, dependence, or psychosis; alcohol/drug treatment services received through the DSHS Division of Behavioral Health and Recovery; or arrests for alcohol/drug related offenses.

DSHS Youth with Behavioral Health Needs						
Risks	Any Mental Illness			Alcohol/Drug Problem		
	PERCENT	NUMBER	DENOMINATOR	PERCENT	NUMBER	DENOMINATOR
Treated for Injuries ¹	32%	2,815	8,882	39%	607	1,542
Mental Health Need ¹	100%	8,882	8,882	50%	775	1,542
Alcohol or Drug Need ¹	9%	775	8,882	100%	1,542	1,542
Homeless in Past Year ²	10%	547	5,251	26%	316	1,204
Employed ³	16%	1,518	9,319	41%	858	2,113
Arrested ³	6%	540	9,319	31%	651	2,113
Convicted ³	7%	653	9,319	32%	675	2,113

SPOKANE COUNTY

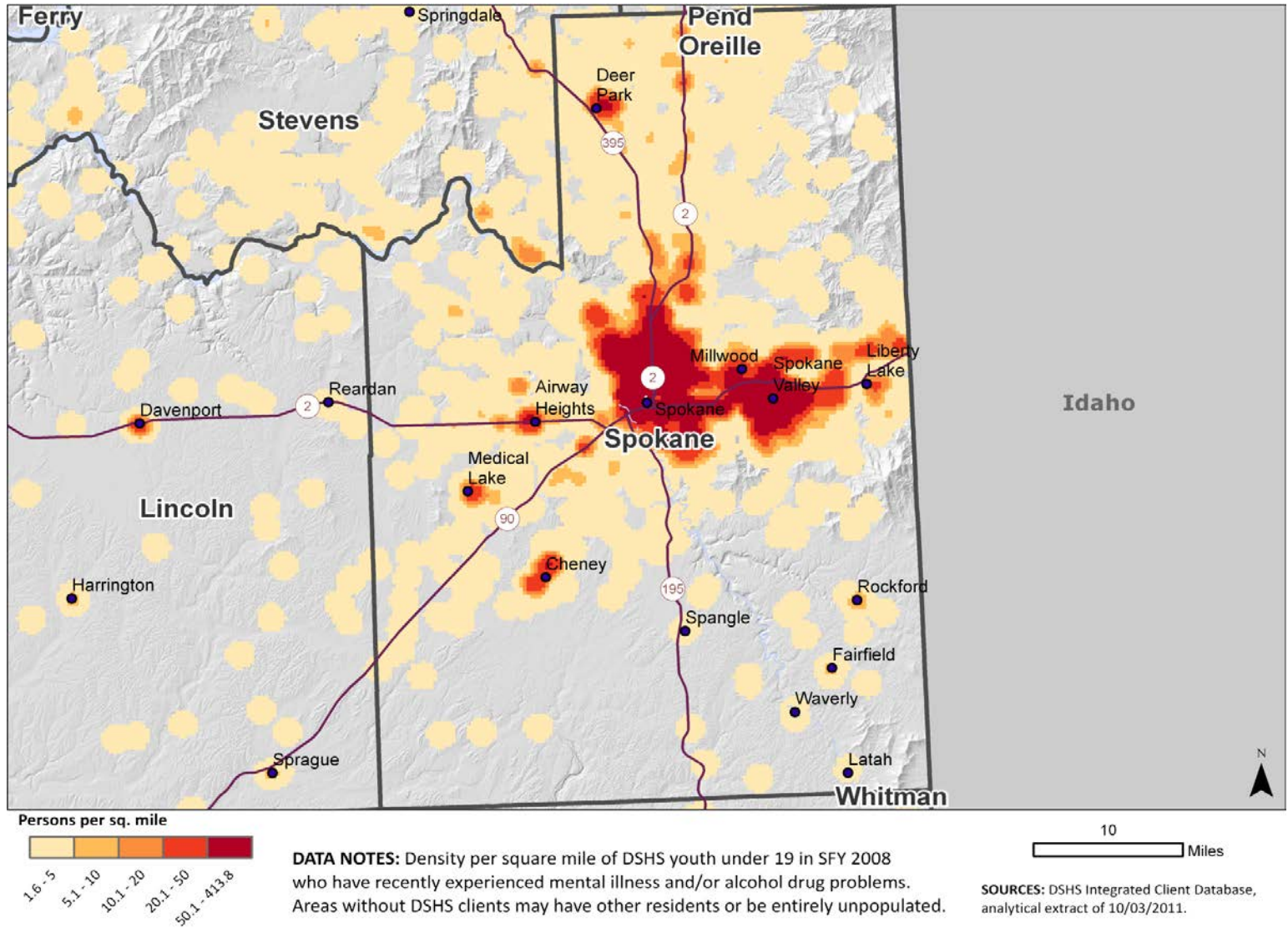


1 Denominator is all persons with at least one month of DSHS medical coverage in SFY 2008. 2 Denominator is all persons with at least one month of receipt of food assistance or a TANF or General Assistance cash grant in SFY 2008. 3 Denominator is all clients in the population.



3d. DSHS Youth with Behavioral Health Problems

State Fiscal Year 2008



DATA NOTES: Density per square mile of DSHS youth under 19 in SFY 2008 who have recently experienced mental illness and/or alcohol drug problems. Areas without DSHS clients may have other residents or be entirely unpopulated.

SOURCES: DSHS Integrated Client Database, analytical extract of 10/03/2011.

SPOKANE COUNTY





PART 4 | Adults with Behavioral Health Needs

THIS SECTION concentrates on DSHS adults (18 and older) who lived in the county during their last month of DSHS service in SFY 2008, and have recently experienced mental illness and/or alcohol/drug problems.

Recent mental health needs are indicated by any of the following appearing in health records during the previous 24 months (SFY 2007 through SFY 2008):

- Diagnoses of psychotic, bipolar, depression, anxiety, adjustment, ADHD, conduct, or impulse disorders.
- Receipt of antipsychotic, bipolar, antidepressant, antianxiety, or ADHD medications.
- Receipt of mental health services through DSHS Division of Behavioral Health and Recovery, medical providers, tribal mental health, or Behavioral Rehabilitation Services provided through the DSHS Children’s Administration.

Recent alcohol/drug problems are indicated by one of more of the following appearing in administrative records during the previous 24 months (SFY 2007 through SFY 2008):

- Diagnosis of alcohol or drug abuse or dependence, or substance-induced psychosis.
- Alcohol/drug treatment services received paid for through the DSHS Division of Behavioral Health and Recovery.
- Arrests for alcohol or drug related offenses.

Table 4a includes demographic information on these adults.

Table 4b reports on the DSHS services provided to adults with broad mental illness or alcohol/drug need flags. Details on the meaning of the DSHS services are provided in Appendix B.

Table 4c reports on “risks” for these two groups of DSHS clients. Details on the meanings of the risk indicators are provided in Appendix C.

The map shows places with high concentrations per square mile of DSHS adults high levels of behavioral health needs—either mental illness or alcohol/drug problems or both.

Data Sources: All data are drawn from the DSHS Integrated Client Database.





4a. DSHS Client Characteristics, Adults with Behavioral Health Needs

State Fiscal Year 2008

This table shows demographic information for adults (18 and up) who lived in the county during their last month of DSHS service in SFY 2008, and have recently experienced mental illness of alcohol/drug problems. Recent mental illness is defined as one or more of the following events between July 1, 2006 and June 30, 2008: a diagnosis of psychotic, bipolar, depression, anxiety, adjustment, ADHD, conduct or impulse disorder; receipt of antipsychotic, bipolar, antidepressant, antianxiety, or ADHD medications; receipt of mental health services through DSHS Division of Behavioral Health and Recovery, medical providers, tribal mental health, or Behavioral Rehabilitation Services provided through the DSHS Children's Administration. A recent alcohol/drug problem is defined as one or more of the following events occurring between July 1, 2006 and June 30, 2008: a diagnosis of alcohol or drug abuse, dependence, or psychosis; alcohol/drug treatment services received through the DSHS Division of Behavioral Health and Recovery; or arrests for alcohol/drug related offenses.

DSHS Adults with Behavioral Health Needs

Race/Ethnicity	Any Mental Illness <i>Total = 18,045</i>		Alcohol/Drug Problem <i>Total = 10,364</i>	
	PERCENT	NUMBER	PERCENT	NUMBER
Any Minority	17%	3,139	24%	2,500
White Only	82%	14,740	75%	7,743
Unknown	1%	166	1%	121
Minority Detail¹				
Hispanic	4%	745	4%	464
American Indian/Alaska Native	9%	1,550	13%	1,320
Asian/Pacific Islander	2%	361	2%	194
African American	4%	764	7%	755
Age				
Average Age	41	n/a	37	n/a

SPOKANE COUNTY



¹ Clients who reported belonging to more than one race/ethnicity group are counted in each reported group. As a result, the minority detail categories will sum to more than the percent for the "Any minority" group.



4b. DSHS Service History for Adults with Behavioral Health Needs

State Fiscal Year 2008

This table reports on the various DSHS services provided to adults (18 and up) who lived in the county during their last month of DSHS service in SFY 2008, and have recently experienced mental illness or alcohol/drug problems. Recent mental illness is defined as one or more of the following events between July 1, 2006 and June 30, 2008: a diagnosis of psychotic, bipolar, depression, anxiety, adjustment, ADHD, conduct or impulse disorder; receipt of antipsychotic, bipolar, antidepressant, anti-anxiety, or ADHD medications; receipt of mental health services through DSHS Division of Behavioral Health and Recovery, medical providers, tribal mental health, or Behavioral Rehabilitation Services provided through the DSHS Children's Administration. A recent alcohol/drug problem is defined as one or more of the following events occurring between July 1, 2006 and June 30, 2008: a diagnosis of alcohol or drug abuse, dependence, or psychosis; alcohol/drug treatment services received through the DSHS Division of Behavioral Health and Recovery; or arrests for alcohol/drug related offenses.

DSHS Adults with Behavioral Health Needs				
DSHS Services	Any Mental Illness Total = 18,045		Alcohol/Drug Problem Total = 10,364	
	PERCENT	NUMBER	PERCENT	NUMBER
Medical Coverage	87%	15,736	62%	6,442
Basic Food	78%	14,023	75%	7,798
Child Support Enforcement	39%	7,096	55%	5,688
TANF and State Family Assistance <i>Temporary Assistance for Needy Families</i>	14%	2,485	13%	1,321
Refugee Assistance	0%	2	0%	0
Economic Services <i>Any Service from Basic Food to Refugee Assistance</i>	85%	15,270	92%	9,524
Children's Administration <i>In Home and Out of Home</i>	9%	1,710	14%	1,436
Juvenile Rehabilitation	0%	0	0%	0
Disability Medicaid	54%	9,735	29%	2,959
Disability Lifeline-Unemployable <i>formerly General Assistance</i>	8%	1,418	10%	1,008
Long Term Care	10%	1,751	3%	351
Developmental Disabilities	6%	1,010	1%	52
Mental Health Services from RSNs ¹	33%	5,874	18%	1,855
Mental Health Medication Only ²	36%	6,492	15%	1,576
Alcohol or Drug Treatment	9%	1,663	30%	3,100
Vocational Rehabilitation	5%	829	3%	335



¹ These clients received RSN services and/or community or state hospital inpatient and/or Children's Administration BRS or "other intensive" services. ² These clients received only mental health medications.



4c. Risk Factors for DSHS Adults with Behavioral Health Needs

State Fiscal Year 2008

This table reports on “risks” seen in DSHS data for adults (18 and up) who lived in the county during their last month of DSHS service in SFY 2008, and have recently experienced mental illness or alcohol/drug problems. Recent mental illness is defined as one or more of the following events between July 1, 2006 and June 30, 2008: a diagnosis of psychotic, bipolar, depression, anxiety, adjustment, ADHD, conduct or impulse disorder; receipt of antipsychotic, bipolar, antidepressant, anti-anxiety, or ADHD medications; receipt of mental health services through DSHS Division of Behavioral Health and Recovery, medical providers, tribal mental health, or Behavioral Rehabilitation Services provided through the DSHS Children’s Administration. A recent alcohol/drug problem is defined as one or more of the following events occurring between July 1, 2006 and June 30, 2008: a diagnosis of alcohol or drug abuse, dependence, or psychosis; alcohol/drug treatment services received through the DSHS Division of Behavioral Health and Recovery; or arrests for alcohol/drug related offenses.

DSHS Adults with Behavioral Health Needs						
Risks	Any Mental Illness			Alcohol/Drug Problem		
	PERCENT	NUMBER	DENOMINATOR	PERCENT	NUMBER	DENOMINATOR
Treated for Injuries ¹	40%	6,247	15,736	43%	2,787	6,442
Mental Health Need ¹	100%	15,736	15,736	66%	4,237	6,442
Alcohol or Drug Need ¹	27%	4,237	15,736	100%	6,442	6,442
Homeless in Past Year ²	16%	2,234	14,154	34%	2,644	7,862
Employed ³	35%	6,300	18,045	47%	4,877	10,364
Arrested ³	10%	1,732	18,045	34%	3,521	10,364
Convicted ³	11%	1,901	18,045	33%	3,405	10,364

SPOKANE COUNTY

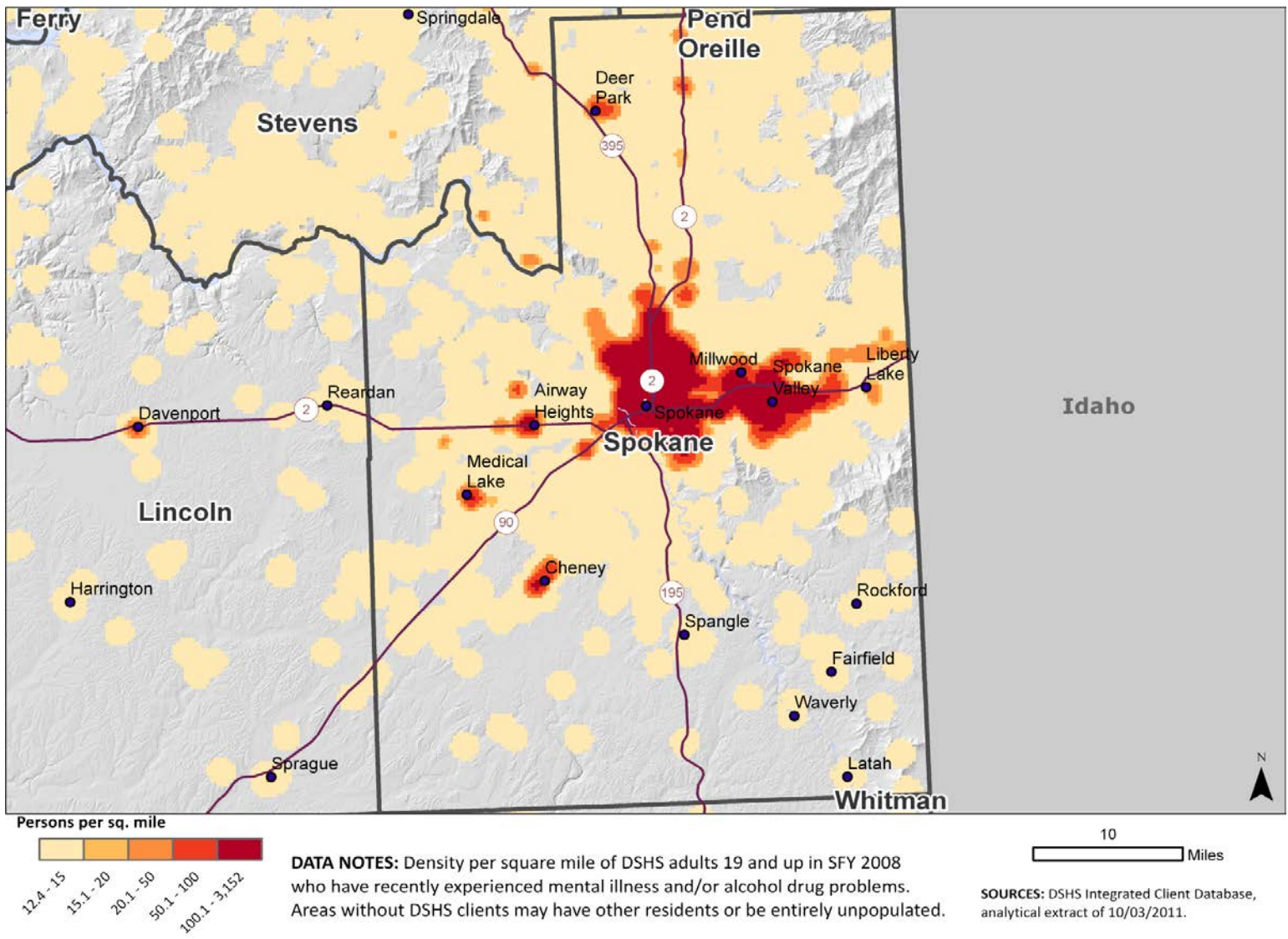


¹ Denominator is all persons with at least one month of DSHS medical coverage in SFY 2008. ² Denominator is all persons with at least one month of receipt of food assistance or a TANF or General Assistance cash grant in SFY 2008. ³ Denominator is all clients in the population.



4d. DSHS Adults with Behavioral Health Needs

State Fiscal Year 2008



SPOKANE COUNTY





PART 5 | Criminal Justice

THIS SECTION concentrates on DSHS youth (ages 10 to 17) and DSHS adults (18 and up) living in the county who were involved in a court filing during SFY 2008. Clients are included in these tables if they are identified as residing in the county during their last month of DSHS service in SFY 2008.

Table 5a includes demographic information on all DSHS clients living in the county with a court filing during SFY 2008.

Table 5b reports on the DSHS services provided in the county to DSHS clients with a court filing during SFY 2008. Details on the meaning of the DSHS services are provided in Appendix B.

Table 5c reports on “risks” for these DSHS clients. Details on the meanings of the risk indicators are provided in Appendix C.

The map of DSHS clients shows places where high concentrations per square mile of DSHS clients with criminal justice issues live.

Data Sources: All data are drawn from the DSHS Integrated Client Database, which includes court data maintained by the Administrative Office of the Courts.





5a. Characteristics of DSHS Clients Arrested or Convicted

State Fiscal Year 2008

This table shows demographic information for DSHS youth and adults living in the county who were involved in a court filing during SFY 2008. Clients are included in a county report if they are identified as residing in the county in SFY 2008 in the DSHS Integrated Client Database. NOTE: The person may not have been convicted of an offense.

DSHS Clients Arrested or Convicted				
Race/Ethnicity	Youth Total = 1,245		Adults Total = 11,132	
	PERCENT	NUMBER	PERCENT	NUMBER
Any Minority	31%	390	25%	2,773
White Only	67%	837	72%	8,030
Unknown	1%	18	3%	329
Minority Detail ¹				
Hispanic	7%	81	5%	570
American Indian/Alaska Native	16%	198	11%	1,239
Asian/Pacific Islander	3%	36	2%	238
African American	11%	138	9%	973
Age				
Average Age	15	n/a	33	n/a

SPOKANE COUNTY



¹ Clients who reported belonging to more than one race/ethnicity group are counted in each reported group. As a result, the minority detail categories will sum to more than the percent for the "Any minority" group.



5b. DSHS Service History for Clients Arrested or Convicted

State Fiscal Year 2008

This table reports the DSHS services provided in SFY 2008 to DSHS youth and adults living in the county who were involved in a court filing during SFY 2008. Clients are included in this report if they are identified as residing in the county during their last month of DSHS service in SFY 2008. NOTE: The person may not have been convicted of an offense.

DSHS Clients Arrested or Convicted					
DSHS Services	Youth Total = 1,245		Adults Total = 11,132		
	PERCENT	NUMBER	PERCENT	NUMBER	
Medical Coverage	81%	1,007	48%	5,299	
Basic Food	51%	631	67%	7,473	
Child Support Enforcement	66%	825	62%	6,947	
TANF and State Family Assistance <i>Temporary Assistance for Needy Families</i>	24%	303	13%	1,453	
Refugee Assistance	0%	0	0%	1	
Economic Services <i>Any Service from Basic Food to Refugee Assistance</i>	79%	981	93%	10,300	
Children's Administration <i>In Home and Out of Home</i>	31%	389	13%	1,398	
Juvenile Rehabilitation	5%	67	0%	34	
Disability Medicaid	7%	81	13%	1,462	
Disability Lifeline-Unemployable <i>formerly General Assistance</i>	0%	0	6%	666	
Long Term Care	0%	0	1%	92	
Developmental Disabilities	1%	12	1%	64	
Mental Health Services from RSNs ¹	23%	290	9%	1,048	
Mental Health Medication Only ²	4%	51	7%	805	
Alcohol or Drug Treatment	17%	210	13%	1,451	
Vocational Rehabilitation	0%	0	2%	172	

SPOKANE COUNTY



¹ These clients received RSN services and/or community or state hospital inpatient and/or Children's Administration BRS or "other intensive" services. ² These clients received only mental health medications.



5c. Risk Factors for DSHS Clients with Arrests or Convictions

State Fiscal Year 2008

This table reports on “risks” seen in DSHS data for DSHS youth and adults living in the county who were involved in a court filing during SFY 2008. Clients are included in a county report if they are identified as residing in the county during their last month of DSHS service in SFY 2008. NOTE: The person may not have been convicted of an offense.

DSHS Clients Arrested or Convicted						
Risks	Youth			Adults		
	PERCENT	NUMBER	DENOMINATOR	PERCENT	NUMBER	DENOMINATOR
Treated for Injuries ¹	37%	368	1,007	37%	1,972	5,299
Mental Health Need ¹	48%	487	1,007	46%	2,431	5,299
Alcohol or Drug Need ¹	31%	312	1,007	49%	2,577	5,299
Homeless in Past Year ²	9%	58	656	35%	2,661	7,532
Employed ³	20%	252	1,245	61%	6,751	11,132
Arrested ³	36%	446	1,245	43%	4,734	11,132
Convicted ³	66%	822	1,245	53%	5,921	11,132

SPOKANE COUNTY

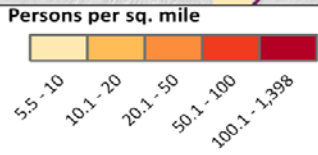
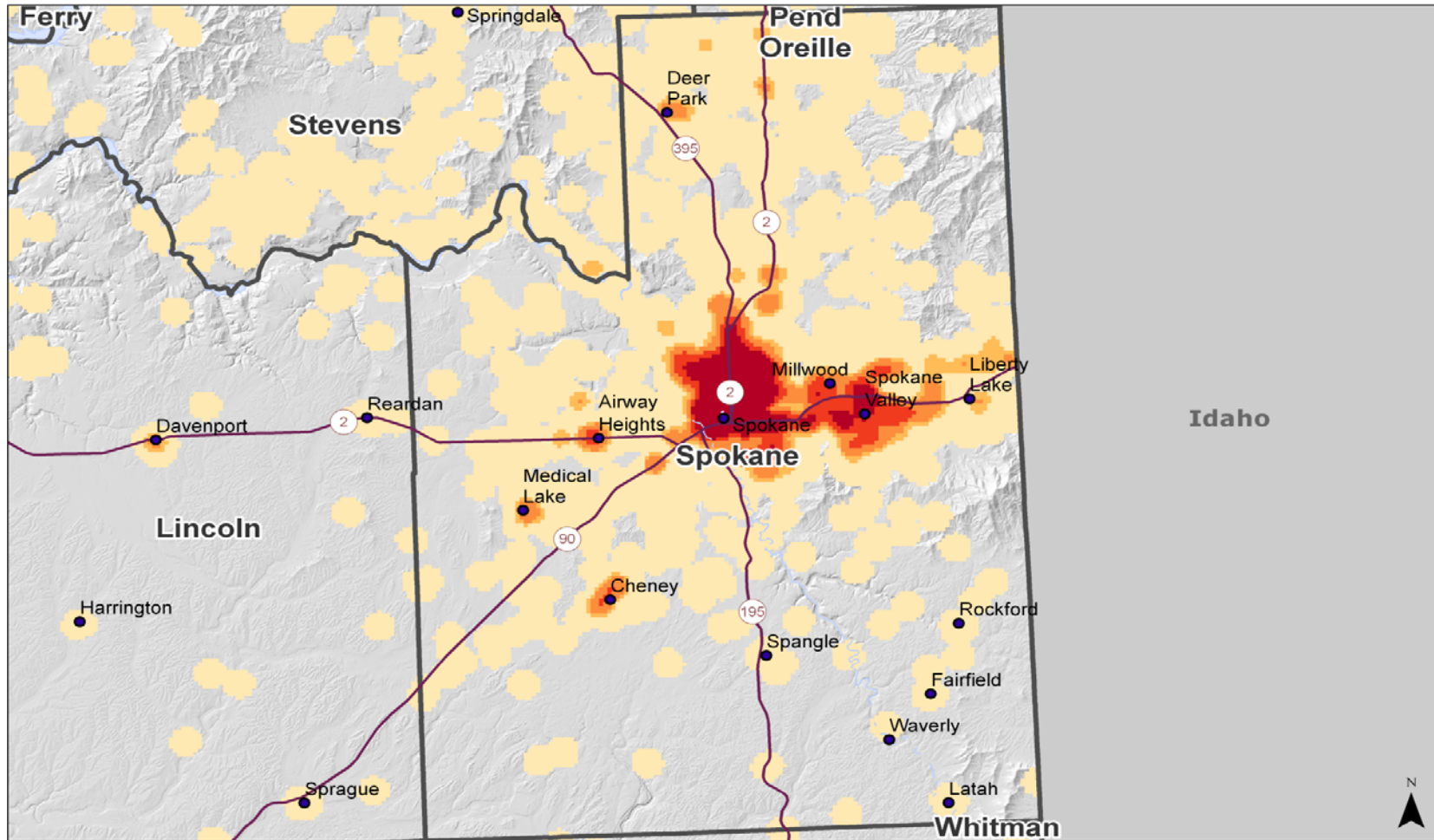


¹ Denominator is all persons with at least one month of DSHS medical coverage in SFY 2008. ² Denominator is all persons with at least one month of receipt of food assistance or a TANF or General Assistance cash grant in SFY 2008. ³ Denominator is all clients in the population.

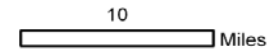


5d. Concentrations of DSHS Clients Arrested or Convicted

State Fiscal Year 2008



DATA NOTES: Density per square mile of DSHS clients who have been arrested or convicted of a crime in SFY 2008. Areas without DSHS clients may have other residents or be entirely unpopulated.



SOURCES: DSHS Integrated Client Database, analytical extract of 10/03/2011.

SPOKANE COUNTY





PART 6 | Persons with Disabilities

THIS SECTION concentrates on DSHS children (ages birth through 17) and DSHS working age adults (18 through 64) in the county who have chronic, long-term health conditions that may affect their ability to carry out the activities of their daily lives.

In these tables, the population of persons with disabilities is identified through their enrollment in disability-related healthcare coverage. It includes DSHS clients who received healthcare through the following programs: SSI, SSDI, General Assistance U and X, Disability Lifeline-U, Healthcare for Workers with Disabilities, ADATSA, and anyone else in one Medically Needy/Categorically Needy Disabled group. Persons who were always dual eligibles (that is, on Medicare as well as Medicaid) are excluded from this definition.

Clients are included in a county report if they are identified as residing in the county in SFY 2008 in the DSHS Integrated Client Database.

Table 6a includes demographic information on the DSHS clients with disabilities.

Table 6b reports on the DSHS services provided in your county to DSHS clients with disabilities. Details on the meaning of the DSHS services are provided in Appendix B.

Table 6c reports on “risks” for the DSHS clients with disabilities. Details on the meanings of the risk indicators are provided in Appendix C.

The map of DSHS clients shows places where high concentrations per square mile of DSHS clients with disabilities live.

Data Sources: All data are drawn from the DSHS Integrated Client Database.





6a. DSHS Client Characteristics for Clients with Disabilities

State Fiscal Year 2008

This table shows demographic information for youth and working-age adults in the county who were DSHS clients during SFY 2008 and had chronic, long-term health conditions that may affect their ability to carry out the activities of daily life. In these tables, the clients were identified through their enrollment in disability-related medical coverage provided by Medicaid or state programs (SSI, SSDI, General Assistance/Disability Lifeline, ADATSA, and Healthcare for Workers with Disabilities, along with any other Categorically Needy/Medically Needy Disabled coverage). Clients are included in a county report if they are identified as residing in the county in SFY 2008 in the DSHS Integrated Client Database.

DSHS Clients with Disabilities					
Race/Ethnicity	Working Age Adults <i>Total = 12,151</i>		Disabled Children <i>Total = 1,968</i>		
	PERCENT	NUMBER	PERCENT	NUMBER	
Any Minority	20%	2,426	27%	526	
White Only	79%	9,588	71%	1,400	
Unknown	1%	137	2%	42	
Minority Detail¹					
Hispanic	4%	533	7%	146	
American Indian/Alaska Native	10%	1,163	11%	217	
Asian/Pacific Islander	3%	314	4%	70	
African American	5%	629	9%	182	
Age					
Average Age	42	n/a	9	n/a	

SPOKANE COUNTY



¹ Clients who reported belonging to more than one race/ethnicity group are counted in each reported group. As a result, the minority detail categories will sum to more than the percent for the "Any minority" group. In other instances, throughout the presentation, where totals do not add to 100 percent, it is due to rounding.



6b. DSHS Service History for Clients with Disabilities

State Fiscal Year 2008

This table reports the DSHS services provided in SFY 2008 to youth and working-age adults in the county who were DSHS clients during SFY 2008 and had chronic, long-term health conditions that may affect their ability to carry out the activities of daily life. In these tables, persons with disabilities are identified through their enrollment in disability-related medical coverage provided by Medicaid or state programs (SSI, SSDI, General Assistance/Disability Lifeline, ADATSA, and Healthcare for Workers with Disabilities, along with any other Categorically Needy/Medically Needy Disabled coverage). Clients are included in a county report if they are identified as residing in the county in SFY 2008 in the DSHS Integrated Client Database.

DSHS Clients with Disabilities				
DSHS Services	Working Age Adults <i>Total = 12,151</i>		Disabled Children <i>Total = 1,968</i>	
	PERCENT	NUMBER	PERCENT	NUMBER
Medical Coverage	100%	12,151	100%	1,968
Basic Food	80%	9,759	54%	1,055
Child Support Enforcement	29%	3,474	48%	942
TANF and State Family Assistance <i>Temporary Assistance for Needy Families</i>	3%	351	6%	113
Refugee Assistance	0%	2	0%	0
Economic Services	87%	10,513	71%	1,399
Children's Administration <i>In Home and Out of Home</i>	7%	805	21%	410
Juvenile Rehabilitation	0%	4	1%	10
Disability Medicaid	76%	9,289	100%	1,967
Disability Lifeline-Unemployable <i>formerly General Assistance</i>	21%	2,538	0%	2
Long Term Care	9%	1,051	0%	6
Developmental Disabilities	7%	857	37%	720
Mental Health Services from RSNs ¹	21%	2,542	20%	393
Mental Health Medication Only ²	32%	3,924	17%	330
Alcohol or Drug Treatment	14%	1,698	1%	27
Vocational Rehabilitation	6%	718	1%	10

SPOKANE COUNTY



¹ These clients received RSN services and/or community or state hospital inpatient and/or Children's Administration BRS or "other intensive" services. ² These clients received only mental health medications.



6c. Risk Factors for DSHS Clients with Disabilities

State Fiscal Year 2008

This table reports on “risks” seen in DSHS data for youth and working-age adults in the county who were DSHS clients during SFY 2008 and had chronic, long-term health conditions that may affect their ability to carry out the activities of daily life. In these tables, persons with disabilities are identified through their enrollment in disability-related medical coverage provided by Medicaid or state programs (SSI, SSDI, General Assistance/Disability Lifeline, ADATSA, and Healthcare for Workers with Disabilities, along with any other Categorically Needy/Medically Needy Disabled coverage). Clients are included in a county report if they are identified as residing in the county in SFY 2008 in the DSHS Integrated Client Database.

DSHS Clients with Disabilities						
Risks	Working Age Adults			Disabled Children		
	PERCENT	NUMBER	DENOMINATOR	PERCENT	NUMBER	DENOMINATOR
Treated for Injuries ¹	38%	4,584	12,151	29%	562	1,968
Mental Health Need ¹	63%	7,707	12,151	46%	902	1,968
Alcohol or Drug Need ¹	32%	3,872	12,151	3%	68	1,968
Homeless in Past Year ²	22%	2,243	10,010	5%	56	1,059
Employed ³	26%	3,109	12,151	2%	47	1,968
Arrested ³	13%	1,556	12,151	3%	61	1,968
Convicted ³	13%	1,609	12,151	3%	62	1,968

SPOKANE COUNTY

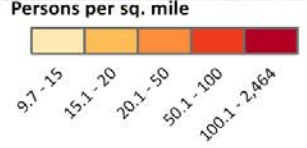
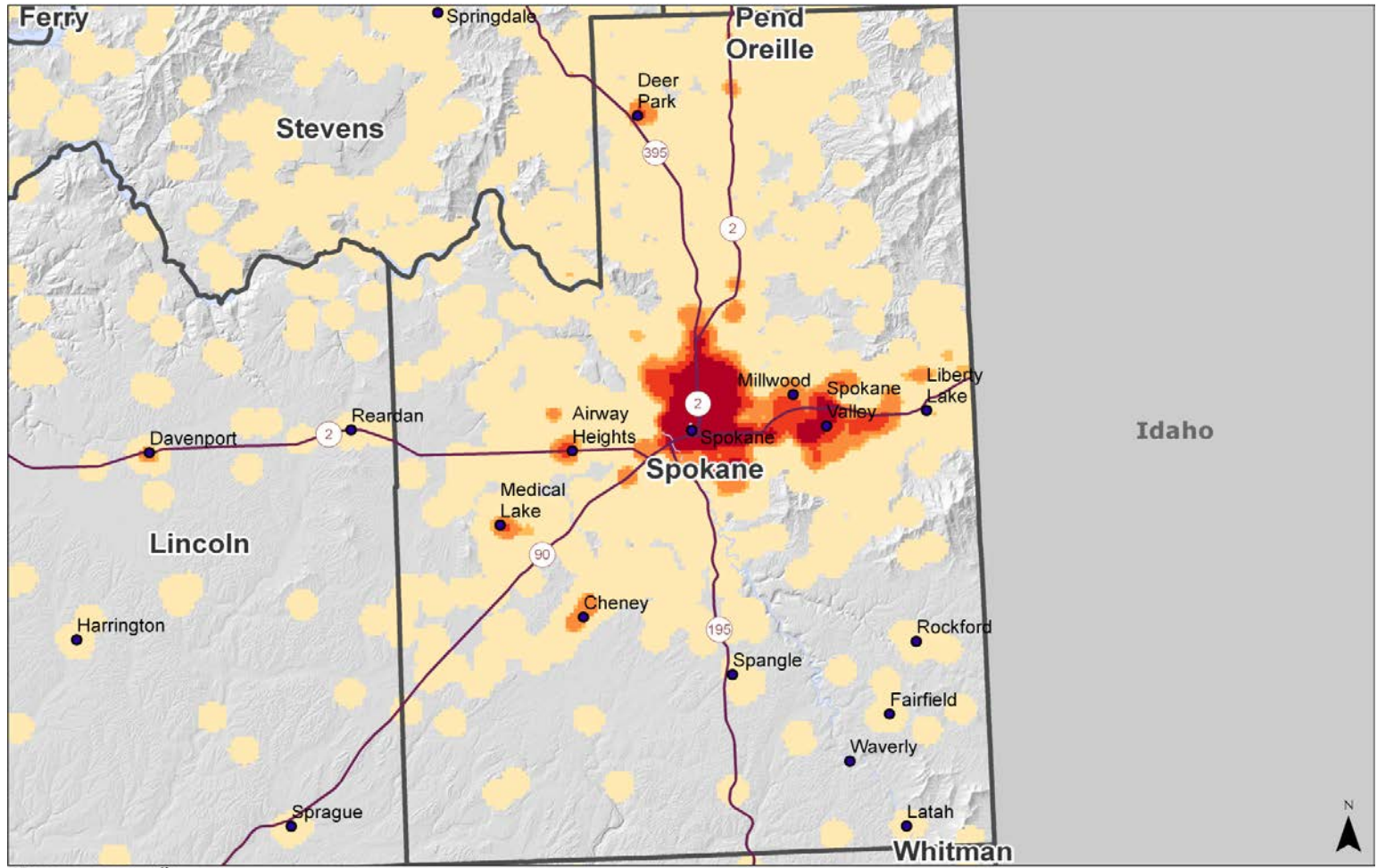


¹ Denominator is all persons with at least one month of DSHS medical coverage in SFY 2008. ² Denominator is all persons with at least one month of receipt of food assistance or a TANF or General Assistance cash grant in SFY 2008. ³ Denominator is all clients in the population.

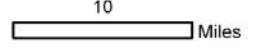


6d. Concentrations of Working Age Adults with Disabilities

State Fiscal Year 2008



DATA NOTES: Density per square mile of DSHS clients age 18 through 64 who had disability-related medical coverage from the state or federal government during SFY 2008. Clients who were always dually eligible due to Medicare coverage are excluded. Areas without DSHS clients may have other residents or be entirely unpopulated.



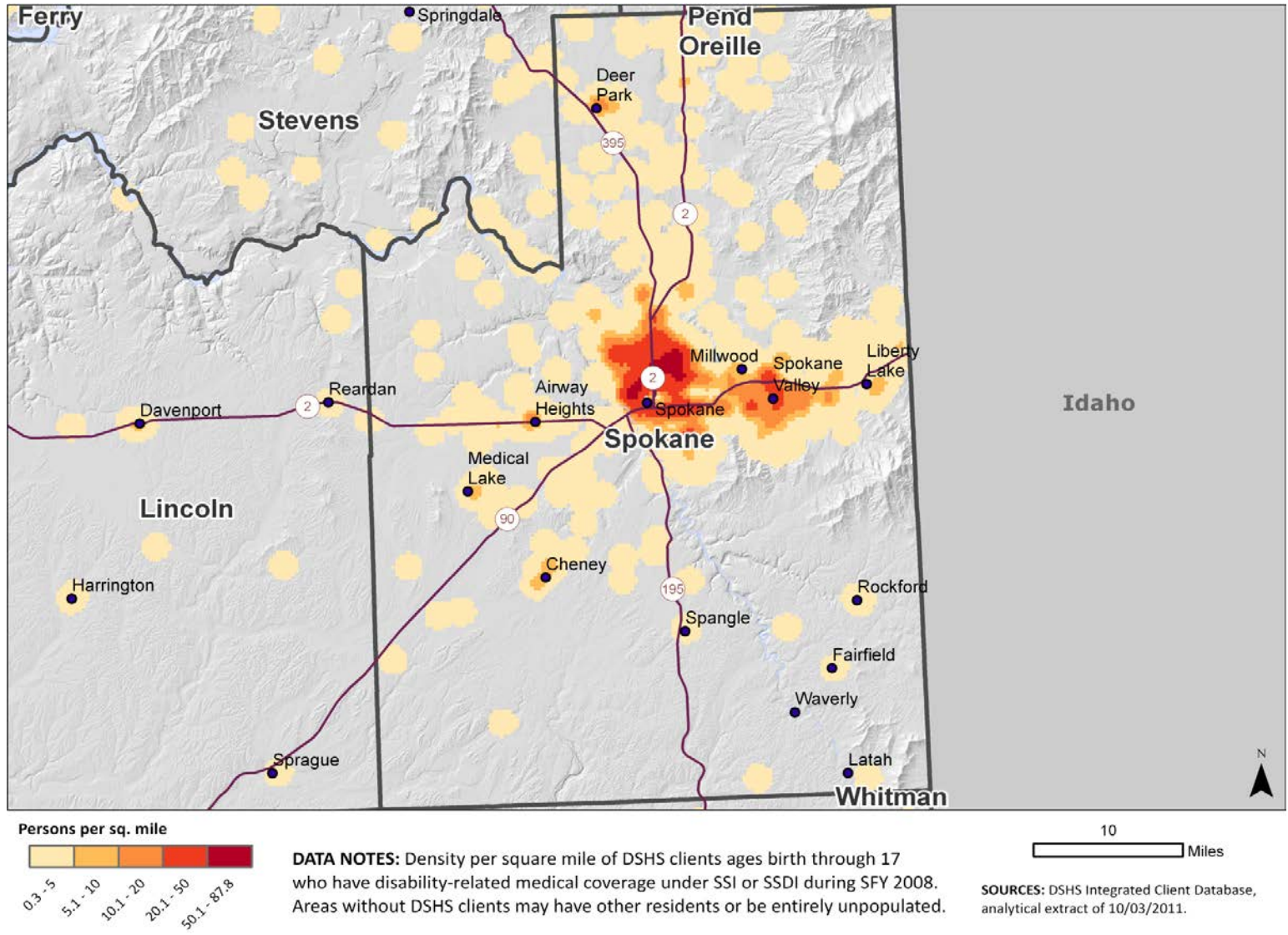
SOURCES: DSHS Integrated Client Database, analytical extract of 10/03/2011.





6e. Concentrations of Children with Disabilities

State Fiscal Year 2008



NOTES TO TABLE B (1 of 2)

DSHS SERVICES

Medical Coverage includes health coverage purchased under the federal Medicaid (Title 19), Children’s medical, and state-only funded medical coverage.

Basic Food includes food benefits provided to families under the federal Supplemental Nutrition Assistance Program (SNAP) and the state food assistance program for legal immigrants not eligible for SNAP benefits.

Child Support Enforcement establishes paternity, locates non-custodial parents, and establishes and enforces child support orders.

TANF and State Family Assistance includes assistance under the federal TANF (Temporary Aid to Needy Families) program and the State Family Assistance program for persons not eligible for TANF benefits. Includes WorkFirst employment services and monthly cash grants to needy families, children under age 18 (or under age 19 if attending high school or working towards a GED full-time), parents or caretaker relatives of these children, unmarried teen parents under 18, and pregnant women.

Refugee Assistance includes various contracted services designed to assist in community integration and employment for refugees, immigrants and refugee children in the Unaccompanied Minor program. Services include English to Speakers of Other Languages (ESOL) training, health screens, employment-focused services, self-sufficiency assessments, citizenship training, foster care, mental health and other social services.

Any Economic Service includes over a dozen major federal and state programs aimed at reducing poverty, and promoting parental responsibility and self-sufficiency. Includes eligibility determination for economic and medical services, cash grants to needy families and people with disabilities, work-focused services, child support enforcement, refugee services, Working Connections child care subsidies, food benefits, Washington Telephone Assistance, and social services to help individuals and families meet their basic needs and achieve economic independence.

Children’s Administration services include in-home and temporary out-of-home services designed to protect children and develop strong, healthy ties in families. Workers investigate allegations of child abuse and neglect and work to preserve families. If necessary for the safety of children, workers work with family members, the courts, law enforcement and other community members to choose temporary out-of-home placements. These partnerships assist foster families, provide adoption services and provide family-focused services so parents and caregivers can overcome substance abuse and improve parenting skills.

Juvenile Rehabilitation services include stays in group homes and institutions, and parole, for youthful offenders who are sentenced to JRA. During their JRA stay, all youth receive evidence-based cognitive/behavioral treatment interventions designed to teach skills needed to manage their behavior and meet their needs without harming others. The majority of these youth also receive intervention and treatment to for two or more disorders: mental health, chemical dependency, cognitive impairment, sexual offending/misconduct and medical fragility.

Disability Medicaid services include medical care funded through the federal SSI and SSDI program, General Assistance-X, and Healthcare for Workers with Disabilities.

Disability Lifeline includes medical care funded through the state’s General Assistance-Unemployable or Disability Lifeline-Unemployable program.

SPOKANE COUNTY



NOTES TO TABLE B (2 of 2)

Long-Term Care includes assessment and case management and a menu of services designed to help frail elderly and disabled adults (age 18 and up) remain in their own homes and communities as long as possible. Services include assistance with activities of daily living (such as housework, shopping, and money management) and self-care (such as eating, medication management and adult protection). For persons who cannot remain in their own homes, care in group settings such as adult family homes, boarding homes and nursing homes is provided.

Developmental Disability services include case management and needed care to assist persons with developmental disabilities originating before adulthood with community integration and employment support, as well as institutional and ICF-MR care. Children under age six may receive services if they have Down Syndrome or other types of developmental delays.

Mental Health services through Division of Behavioral Health and Recovery and the Regional Support Networks include outpatient mental health care and treatment, crisis stabilization, community inpatient care, children’s long-term inpatient, and state hospital inpatient care for persons with significant mental illness.

Mental Health Medication Only includes adults and children who received psychotropic medications and medication management for mental illnesses, but had no outpatient therapy or other mental health service during SFY 2008.

Alcohol or Drug Treatment services include contracted treatment, intervention and aftercare services to treat substance abuse.

Vocational Rehabilitation services include vocational assistance and support for people with disabilities who want to work but have substantial difficulty with employment because of their disabilities. Services include assessment of vocational strengths, assistance in overcoming barriers through partnerships and community organizations, and help in understanding the steps leading to employment.



TECHNICAL NOTES

RISK FACTORS

Employed: Shows the rate of working-age people in this group who were registered as earning some wages from employment in the Employment Security Department's Unemployment Insurance wage and earnings files during this fiscal year.

Homeless Spell in Past Year: Among the people in this group received economic assistance during this fiscal year, this shows the rate who had a spell of homelessness that was recorded in the DSHS Automated Client Eligibility System. Homeless can include living in a shelter or in emergency housing, homeless with or without housing (with housing would include people who are "couch-surfing") or in an "inappropriate living situation" (e.g. on the street, under a bridge) without housing at least once during this fiscal year.

Mental Health Need: Shows the rate of people in this group who have an identified mental health need drawn from psychiatric diagnoses, medications and treatment events received during this fiscal year.

Alcohol or Drug Need: Shows the rate of people in this group who have alcohol or drug treatment need, drawn from diagnoses, treatment events and arrests for alcohol or drug issues during this fiscal year.

Arrests: Shows the rate of people in this group who have gross misdemeanor or felony arrests recorded in the Washington State Patrol arrest records during this fiscal year.

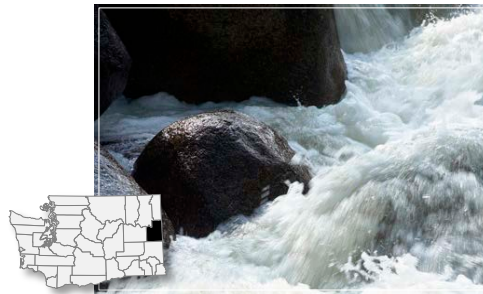
Convictions: Shows the rate of people in this group who have convictions recorded in the Washington State Institute for Public Policy recidivism database during this fiscal year.

MAPS

Density per square mile is calculated using a smoothing method to avoid revealing individual addresses while still representing an area average of DSHS clients. Density is equal to total DSHS clients residing in an area $\frac{1}{4}$ mile by $\frac{1}{4}$ mile and in neighboring areas within a one mile radius, divided by the total square miles in that geographic vicinity. Areas without DSHS clients may have other residents or be entirely unpopulated.

The break points for map classes are chosen based on the following criteria: (1) a total of 5 classes is the upper limit of what most viewers can easily distinguish; (2) the 1st class (under 5 persons per sq. mile) protects confidentiality of small population groups and keeps low-populated rural areas clearly separated from the rest; when the lowest density is more than 5 persons per square mile, the 1st class break point is higher (10 or 15 persons per square mile); (3) for classes 2 through 4, a roughly geometric progression is used for the length of each next interval, which shows well small-town and suburban densities; (4) class 5 delineates the high-density urban core and also smoothes a few extreme concentrations which occur because of "client stacking" (a situation arising when a client's service address, such as Community Service Office or a homeless shelter, is recorded in place of his or her home address).





Trends in Social Service Use: Spokane County

For State Fiscal Years 2008

— *The County Chartbook Collection* —

NOVEMBER 2011

<http://www.dshs.wa.gov/rda/>