

PIERCE County

Drug Court Participants: Recidivism and Key Outcome Measures

MAY 2021

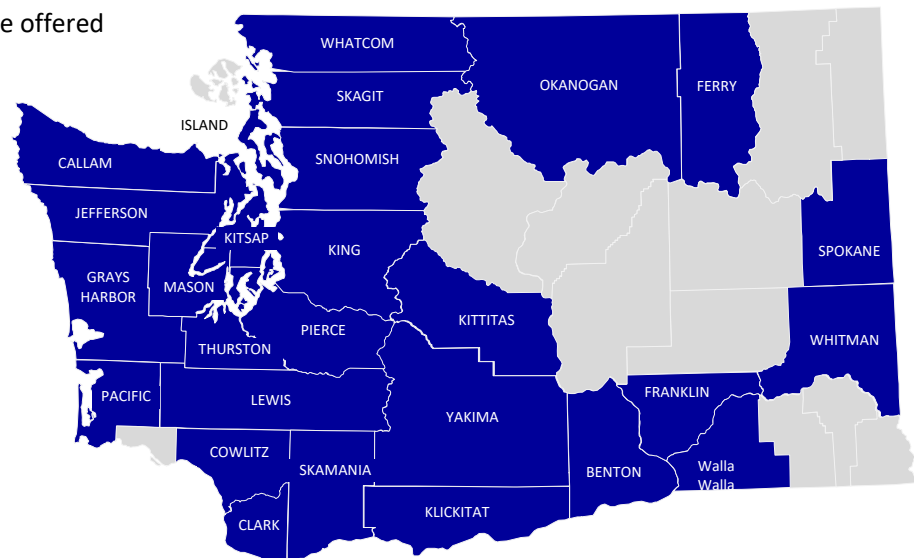
This dashboard presents indicators for monitoring recidivism and other key outcomes among offenders participating in Adult Drug Court. Drug Courts aim to reduce recidivism through judicially supervised substance use disorder treatment, mandatory periodic drug testing, community supervision, use of sanctions, and other rehabilitation services. County-level and statewide trends in drug court enrollment, demographics, recidivism, substance use disorder treatment participation, employment, and Medicaid coverage rates are presented for participants. Indicators are presented only for individuals who started substance use disorder treatment. Due to recent initiatives to integrate behavioral and physical health and changes in reporting systems, new enrollments for years 2016 and greater may be underreported and should not be necessarily interpreted as a decrease in the number of individuals participating in drug courts. Because Clark and Skamania counties were "early adopters" of integrated behavioral health and physical health care, indicators for these two counties were particularly impacted by these reporting changes. This is part of a series of analyses for the HCA Division of Behavioral Health and Recovery describing the experiences of recipients of treatment funded by the Criminal Justice Treatment Account (CJTA). The CJTA pays for substance use disorder treatment and recovery support services for offenders with substance abuse problems.

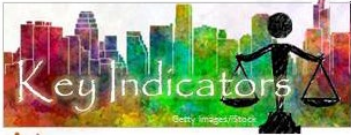
These measures were produced by the DSHS Research and Data Analysis Division in collaboration with:

- HCA Division of Behavioral Health and Recovery
- Washington State Adult Drug Courts

In 2019, 27 counties in Washington state offered Adult Drug Courts including:

- Benton
- Clallam
- Clark
- Cowlitz
- Ferry
- Franklin
- Grays Harbor
- Island
- Jefferson
- King
- Kitsap
- Kittitas
- Klickitat
- Lewis
- Mason
- Okanogan
- Pacific
- Pierce
- Skagit
- Skamania
- Snohomish
- Spokane
- Thurston
- Walla Walla
- Whatcom
- Whitman
- Yakima





PIERCE County

Drug Court Participants: Recidivism and Key Outcome Measures

MAY 2021

CONTENTS

▶▶▶ **At a Glance**

▶▶▶ **New Enrollment**

Supporting Tables: New Enrollment

▶▶▶ **Recidivism at 18 Months and Average Prior Convictions**

Supporting Tables: Recidivism at 18 Months and Prior Convictions

▶▶▶ **Recidivism at 36 Months and Average Prior Convictions**

Supporting Tables: Recidivism at 36 Months and Prior Convictions

▶▶▶ **Substance Use Disorder Treatment Participation**

Supporting Tables: Substance Use Disorder Treatment

▶▶▶ **Employment**

Supporting Tables: Employment

▶▶▶ **Medicaid Enrollment**

Supporting Tables: Medicaid Enrollment

▶▶▶ **Technical Notes**



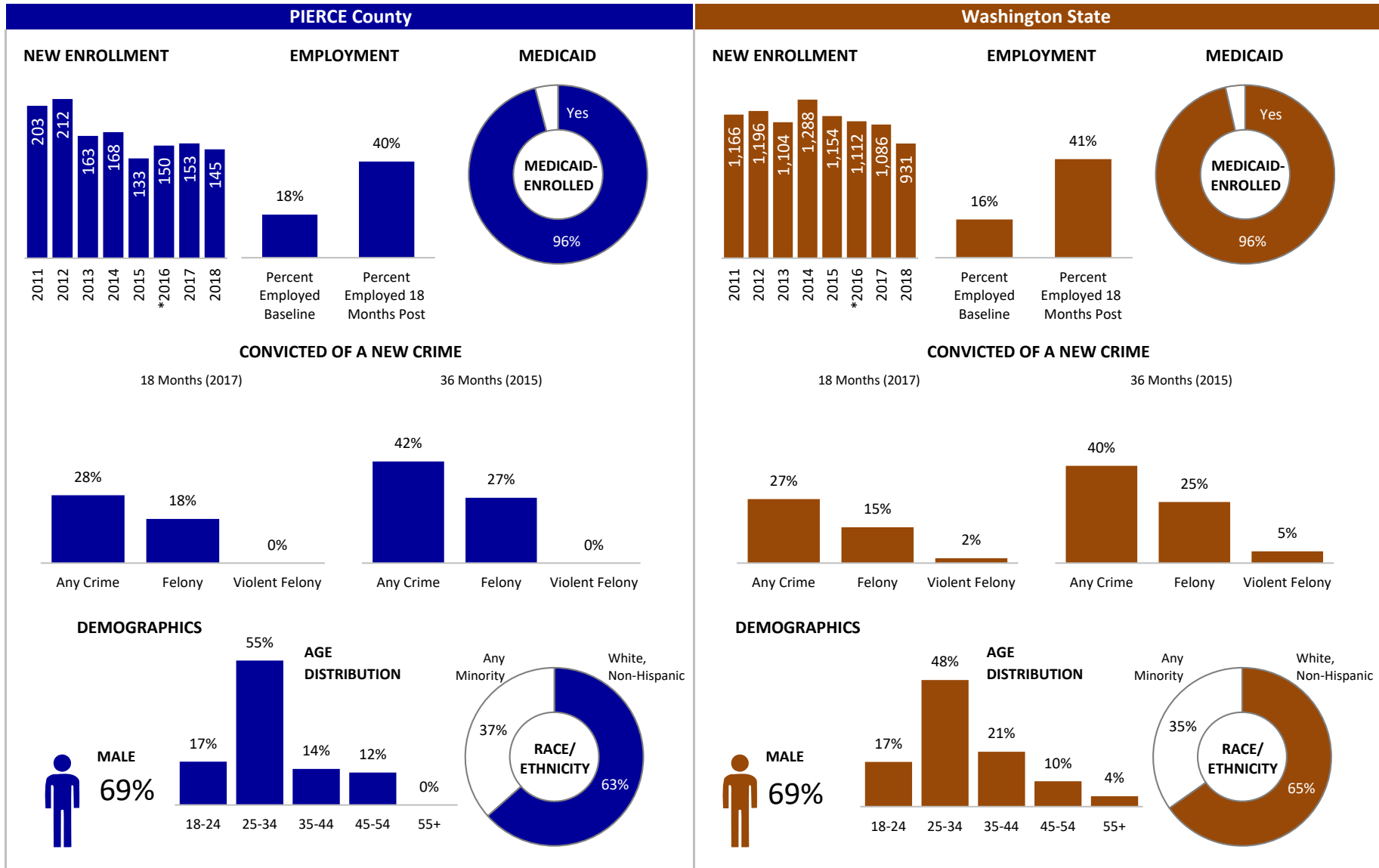
PIERCE County

Drug Court Participants: Recidivism and Key Outcome Measures

[Back to Contents](#)

MAY 2021

AT A GLANCE | 2018





PIERCE County

Drug Court New Enrollment

New Enrollment

LEGEND

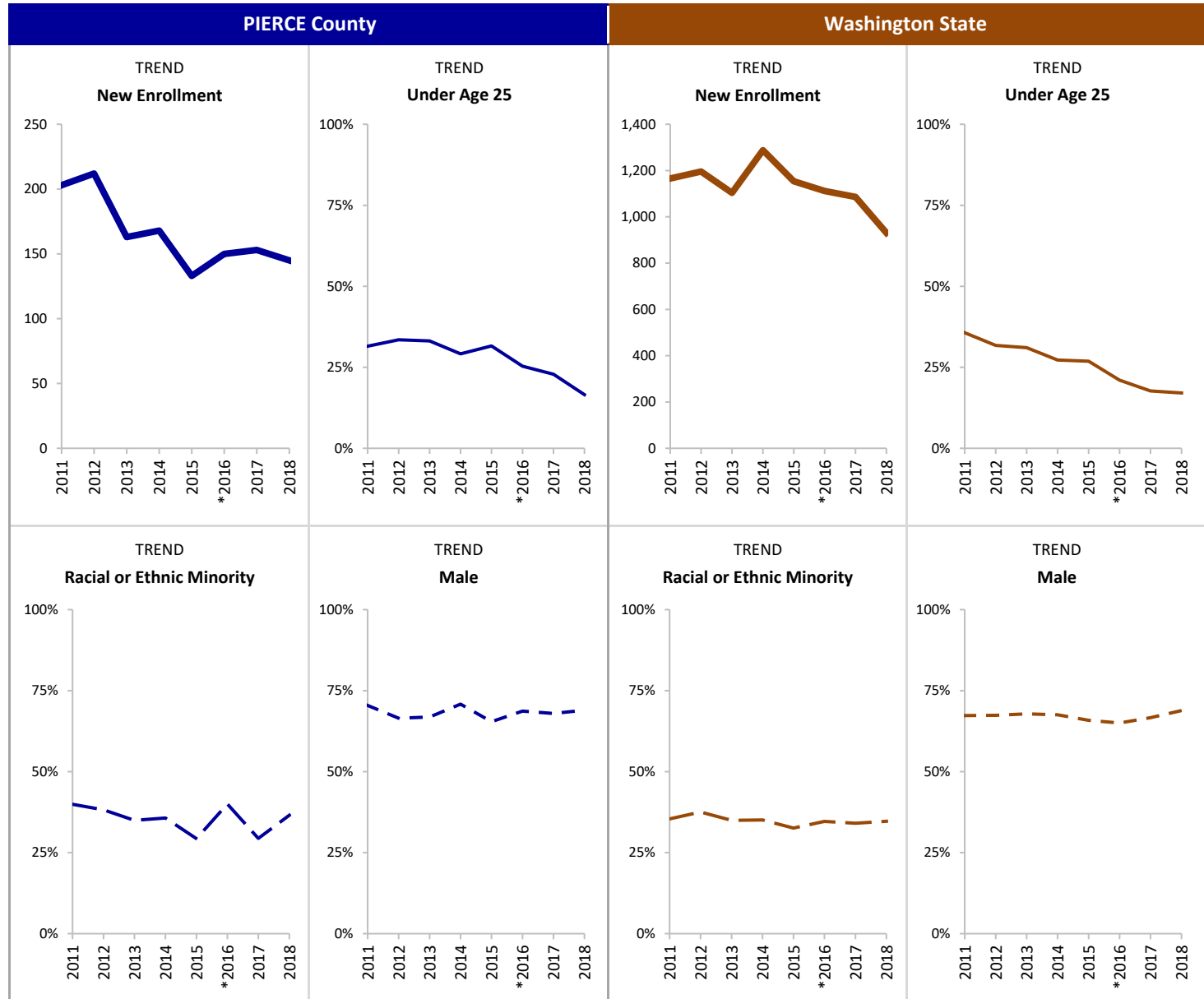
- New Enrollment
- Under Age 25
- - - Racial or Ethnic Minority
- - - Male

INDICATOR

New enrollment includes only new Drug Court participants who started substance use disorder treatment.

SOURCE & POPULATION

DSHS Integrated Client Databases.
New Drug Court participants who started substance use disorder treatment.



SUPPORTING TABLES | **New Enrollment**

CALENDAR YEAR	PIERCE County								Washington State							
	2011	2012	2013	2014	2015	*2016	2017	2018	2011	2012	2013	2014	2015	*2016	2017	2018
Total New Enrollment	203	212	163	168	133	150	153	145	1,166	1,196	1,104	1,288	1,154	1,112	1,086	931
New Enrolled Population by Age																
18-24	32%	33%	33%	29%	32%	25%	23%	17%	36%	32%	31%	27%	27%	21%	18%	17%
Total Age 18-24	64	71	54	49	42	38	35	24	416	380	343	351	310	234	192	159
25-34	32%	31%	36%	40%	45%	51%	51%	55%	33%	37%	38%	41%	45%	47%	48%	48%
Total Age 25 - 34	65	66	58	68	60	77	78	80	389	443	416	530	515	519	525	450
35-44	22%	20%	20%	17%	13%	16%	19%	14%	18%	18%	18%	18%	18%	21%	22%	21%
Total Age 35-44	44	42	33	28	17	24	29	20	209	210	196	236	205	228	239	195
45-54	11%	12%	7%	11%	--	--	--	12%	11%	11%	11%	11%	8%	9%	9%	10%
Total Age 45-54	22	26	12	18				18	129	127	117	139	88	104	100	90
55+	--	--	--	--	--	--	--	--	2%	3%	3%	2%	3%	2%	3%	4%
Total Age 55 and Older									23	36	32	32	35	27	30	37
New Enrolled Pop. by Race-Ethnicity																
American Native	12%	10%	7%	9%	--	11%	7%	12%	10%	13%	11%	12%	12%	13%	12%	13%
Total American Native	24	22	11	15		17	11	17	116	151	122	151	141	143	128	124
Asian	7%	8%	9%	--	--	--	--	--	5%	5%	5%	6%	5%	5%	5%	4%
Total Asian	14	16	14						58	55	60	78	57	55	53	34
African American	15%	18%	17%	20%	13%	18%	12%	15%	14%	16%	13%	13%	12%	12%	12%	11%
Total African American	30	39	28	33	17	27	18	22	167	188	144	163	143	128	127	102
Hawaiian/PI	9%	5%	--	--	--	--	--	--	4%	3%	3%	3%	3%	3%	4%	3%
Total Hawaiian/PI	18	11							42	37	34	45	33	38	44	28
Hispanic	9%	8%	--	--	--	15%	8%	8%	10%	9%	9%	8%	8%	11%	10%	9%
Total Hispanic	18	17				22	13	12	113	109	95	98	87	118	111	84
White Non-Hispanic	60%	62%	65%	64%	71%	60%	71%	63%	64%	62%	65%	65%	67%	65%	66%	65%
Total White Non-Hispanic	122	131	106	108	94	90	108	92	751	747	718	835	776	727	716	606
Any Minority	40%	38%	35%	36%	29%	40%	29%	37%	35%	38%	35%	35%	33%	35%	34%	35%
Total Any Minority	81	81	57	60	39	60	45	53	413	449	386	452	376	385	370	323
New Enrolled Population by Gender																
Female	30%	33%	33%	29%	35%	31%	32%	31%	33%	33%	32%	32%	34%	35%	33%	31%
Total Female	60	70	54	49	46	47	49	45	381	389	355	418	394	389	362	289
Male	70%	67%	67%	71%	65%	69%	68%	69%	67%	67%	68%	68%	66%	65%	67%	69%
Total Male	143	141	109	119	87	103	104	100	785	806	749	870	760	723	724	641

*Incomplete due to changes in reporting systems resulting from the integration of behavioral and physical health care services. See Technical Notes for details.



PIERCE County

Recidivism at 18 Months: Percent Convicted of a New Offense and Average Prior Convictions

MAY 2021

18-Month Recidivism and Prior Convictions

LEGEND

New Conviction: Type of Offense

- Any Crime
- Felony
- Violent Felony

Prior Convictions

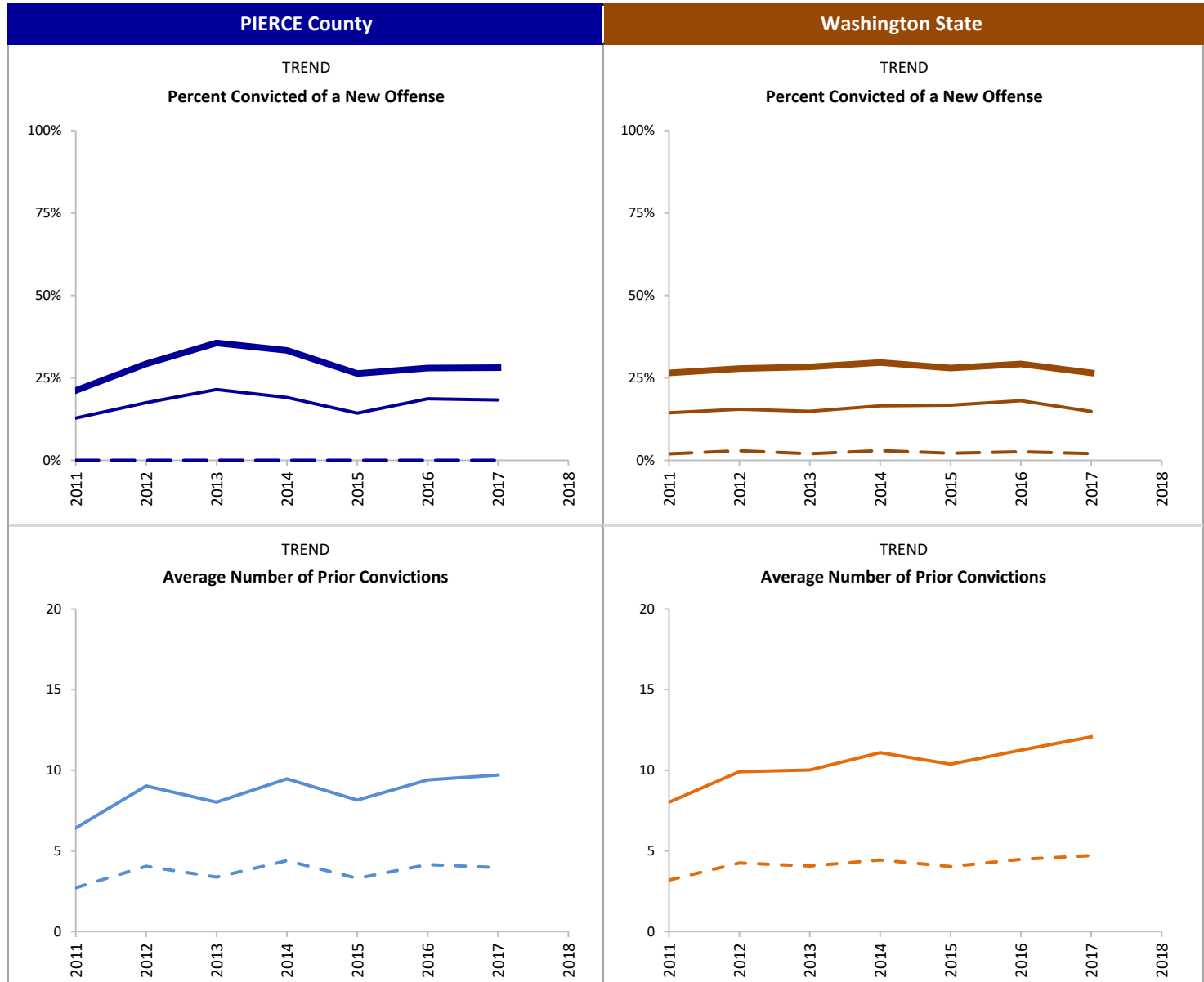
- Any Prior
- - - Felony Prior

INDICATOR

Percent of Drug Court participants convicted of a new offense, committed within 18 months after starting substance use disorder treatment. Average number of prior convictions is based on a count of each charge that resulted in a conviction prior to starting treatment.

SOURCE & POPULATION

DSHS Integrated Client Databases. Drug Court participants who started substance use disorder treatment.



SUPPORTING TABLES | 18-Month Recidivism and Prior Convictions

CALENDAR YEAR	PIERCE County								Washington State							
	2011	2012	2013	2014	2015	2016	2017	2018	2011	2012	2013	2014	2015	2016	2017	2018
Total New Enrollment	203	212	163	168	133	150	153		1,166	1,196	1,104	1,288	1,154	1,112	1,086	
NEW Conviction (18 Months)																
Any Crime	21%	29%	36%	33%	26%	28%	28%		27%	28%	28%	30%	28%	29%	27%	
Total with Any Crime	43	62	58	56	35	42	43		309	333	313	382	323	325	288	
Felony	13%	17%	21%	19%	14%	19%	18%		14%	15%	15%	17%	17%	18%	15%	
Total with a Felony	26	37	35	32	19	28	28		168	185	164	213	193	201	161	
Violent Felony	--	--	--	--	--	--	--		2%	3%	2%	3%	2%	3%	2%	
Total with a Violent Felony									23	35	22	38	25	29	22	
Average Number PRIOR Convictions																
Any Crime	6.4	9.0	8.0	9.5	8.2	9.4	9.7		8.0	9.9	10.0	11.1	10.4	11.3	12.1	
Total with Any Crime	181	193	151	156	124	145	144		1,085	1,116	1,051	1,228	1,109	1,080	1,044	
Felony	2.7	4.0	3.4	4.4	3.3	4.2	4.0		3.2	4.2	4.1	4.4	4.0	4.5	4.7	
Total with Any Felony	133	158	125	132	103	120	108		854	947	876	1,043	922	924	879	
Violent Felony	0.2	0.2	0.2	0.2	0.3	0.4	0.2		0.2	0.2	0.2	0.2	0.3	0.3	0.3	
Total with a Violent Felony	27	29	21	25	23	32	28		143	187	178	220	192	204	241	
Non-Violent Felony	2.6	3.8	3.2	4.2	3.0	3.8	3.7		3.0	4.0	3.8	4.2	3.8	4.2	4.4	
Total with a Non-Violent Felony	133	158	125	132	103	120	108		854	947	876	1,043	922	924	879	
Misdemeanor	3.7	5.0	4.7	5.1	4.8	5.2	5.7		4.8	5.7	6.0	6.7	6.4	6.8	7.4	
Total with a Misdemeanor	166	184	139	142	117	135	134		995	1,047	991	1,170	1,049	1,035	997	

--Cells representing fewer than eleven individuals were suppressed to protect client confidentiality.



PIERCE County

Recidivism at 36-Months: Percent Convicted of a New Offense and Average Prior Convictions

MAY 2021

36-Month Recidivism and Prior Convictions

LEGEND

New Conviction: Type of Offense

- █ Any Crime
- █ Felony
- █ Violent Felony

Prior Convictions

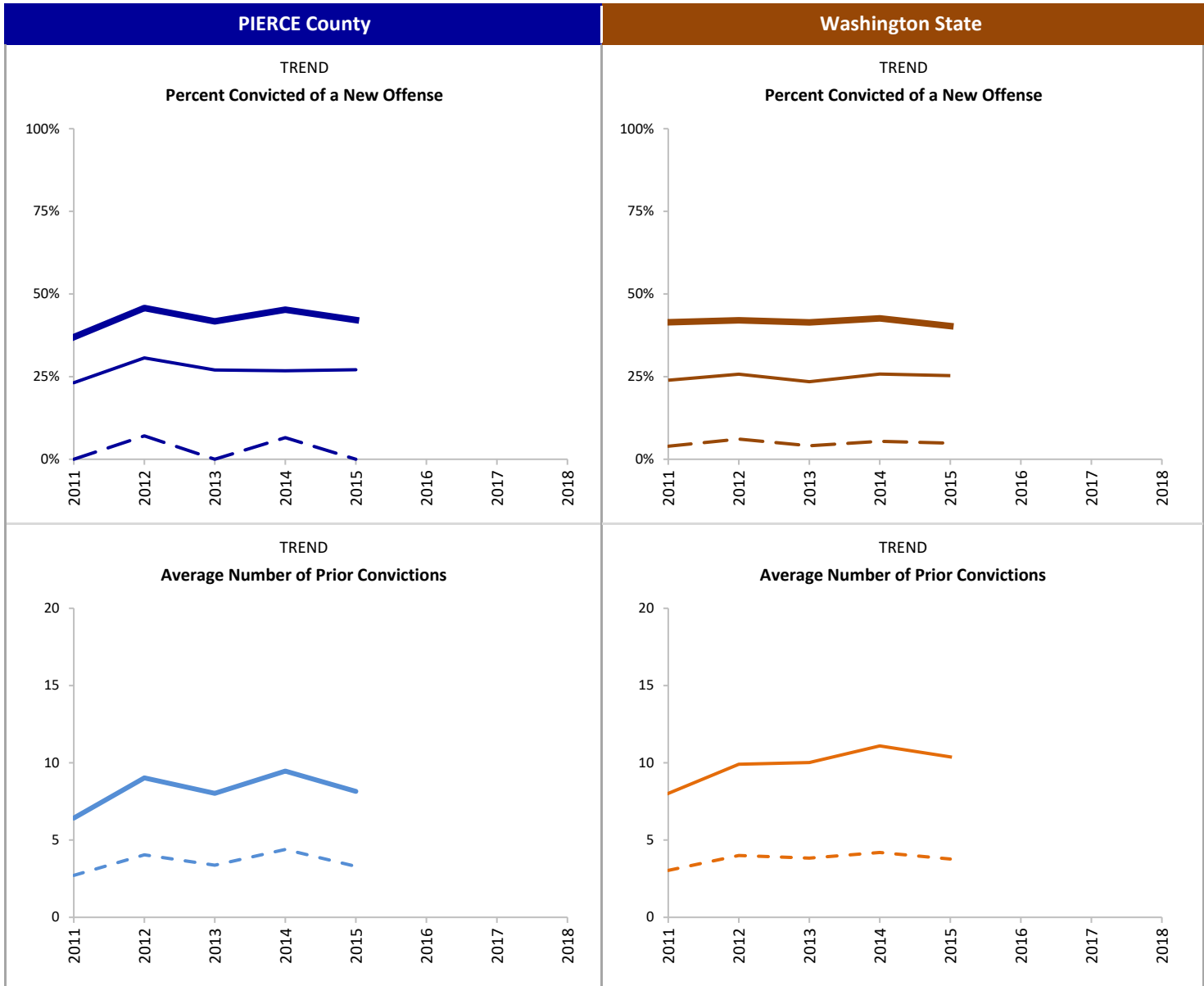
- █ Any Prior
- █ Felony Prior

INDICATOR

Percent of Drug Court participants convicted of a new offense, committed within 36 months after starting substance use disorder treatment. Average number of prior convictions is based on a count of each charge that resulted in a conviction prior to starting treatment.

SOURCE & POPULATION

DSHS Integrated Client Databases. Drug Court participants who started substance use disorder treatment.



SUPPORTING TABLES | 36-Month Recidivism and Prior Convictions

CALENDAR YEAR	PIERCE County								Washington State							
	2011	2012	2013	2014	2015	2016	2017	2018	2011	2012	2013	2014	2015	2016	2017	2018
Total New Enrollment	203	212	163	168	133				1,166	1,196	1,104	1,288	1,154			
NEW Conviction (36 Months)																
Any Crime	37%	46%	42%	45%	42%				41%	42%	41%	43%	40%			
Total with Any Crime	75	97	68	76	56				483	503	457	549	465			
Felony	23%	31%	27%	27%	27%				24%	26%	23%	26%	25%			
Total with a Felony	47	65	44	45	36				279	308	259	332	292			
Violent Felony	--	7%	--	7%	--				4%	6%	4%	5%	5%			
Total with a Violent Felony		15		11					46	73	45	70	56			
Average Number PRIOR Convictions																
Any Crime	6.4	9.0	8.0	9.5	8.2				8.0	9.9	10.0	11.1	10.4			
Total with Any Crime	181	193	151	156	124				1,085	1,116	1,051	1,228	1,109			
Felony	2.7	4.0	3.4	4.4	3.3				3.2	4.2	4.1	4.4	4.0			
Total with Any Felony	133	158	125	132	103				854	947	876	1,043	922			
Violent Felony	0.2	0.2	0.2	0.2	0.3				0.2	0.2	0.2	0.2	0.3			
Total with a Violent Felony	27	29	21	25	23				143	187	178	220	192			
Non-Violent Felony	2.6	3.8	3.2	4.2	3.0				3.0	4.0	3.8	4.2	3.8			
Total with a Non-Violent Felony	133	158	125	132	103				854	947	876	1,043	922			
Misdemeanor	3.7	5.0	4.7	5.1	4.8				4.8	5.7	6.0	6.7	6.4			
Total with a Misdemeanor	166	184	139	142	117				995	1,047	991	1,170	1,049			

--Cells representing fewer than eleven individuals were suppressed to protect client confidentiality.



PIERCE County

Drug Court Substance Use Disorder Treatment Participation

Substance Use Disorder Treatment

LEGEND

Engagement and Retention

- █ Engaged in Treatment
- █ Retained in Treatment

Primary Substance

- █ Heroin/Other Opioids
- █ Methamphetamine

Average Days of SUD Tx

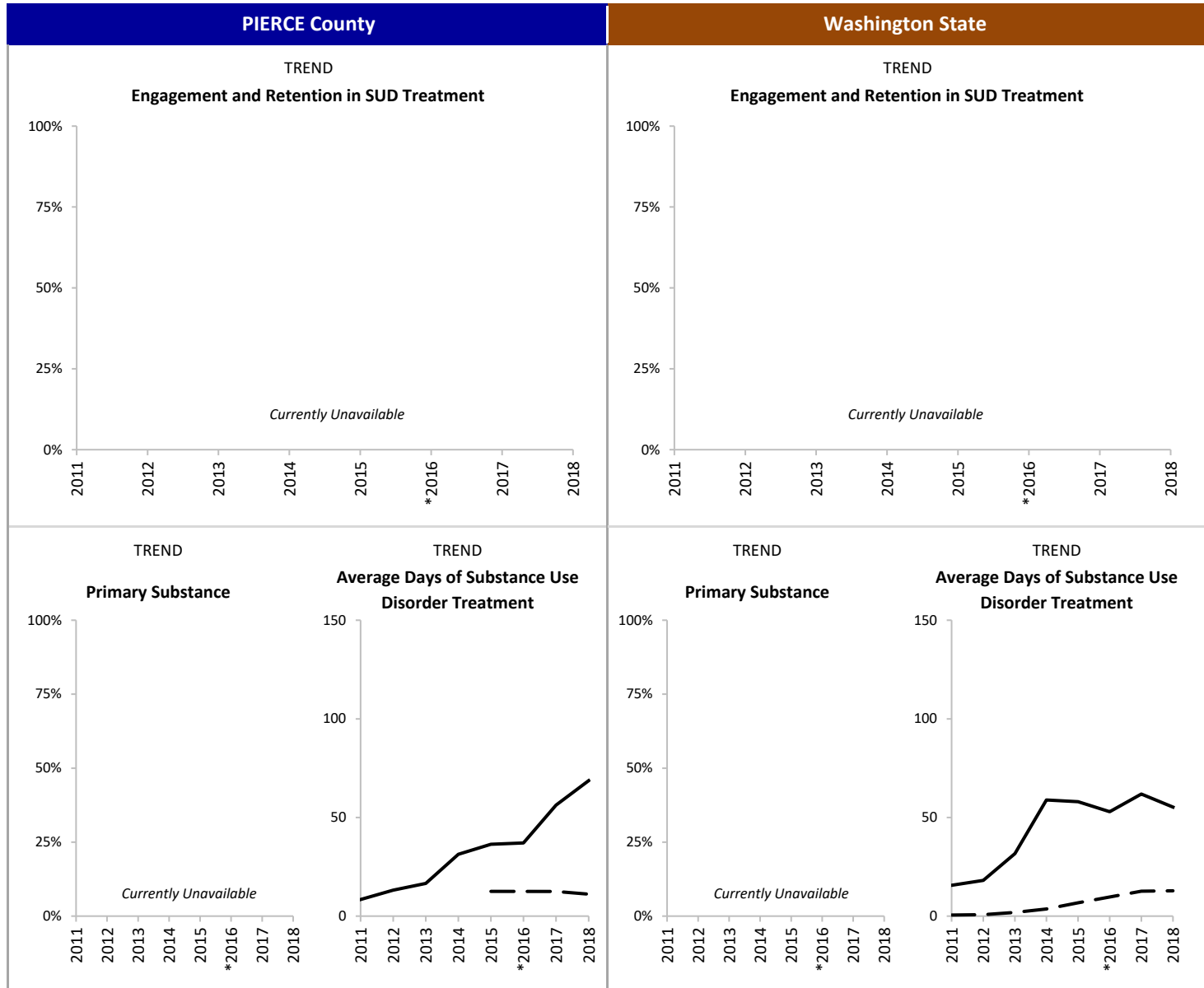
- █ Outpatient
- █ Inpatient

INDICATOR

Percent of Drug Court participants with Engagement and Retention in substance use disorder treatment. Engagement is defined as initiating treatment and receiving two additional services within 30 days after initiation. Retention is defined as receiving treatment services at least once per month for the first 90 days after initiation (see Technical Notes for full definition).

SOURCE & POPULATION

DSHS Integrated Client Databases. Drug Court participants who started substance use disorder treatment.



*Incomplete due to changes in reporting systems resulting from the integration of behavioral and physical health care services. See technical notes for details.

SUPPORTING TABLES | Substance Use Disorder Treatment

CALENDAR YEAR	PIERCE County								Washington State							
	2011	2012	2013	2014	2015	*2016	2017	2018	2011	2012	2013	2014	2015	*2016	2017	2018
Total New Enrollment	203	212	163	168	133	150	153	145	1,166	1,196	1,104	1,288	1,154	1,112	1,086	931
Engagement and Retention																
Engagement																
Total Engaged in Treatment	Currently Unavailable								Currently Unavailable							
Retention																
Total Retained in Treatment																
Primary Substance																
Heroin and Other Opioids																
Total Heroin and Other Opioids																
Methamphetamine																
Total Methamphetamine	Currently Unavailable								Currently Unavailable							
Cannabis																
Total Cannabis																
Alcohol																
Total Alcohol																
Type of SUD Treatment																
Outpatient Treatment	19%	25%	48%	74%	83%	87%	88%	91%	23%	26%	52%	75%	82%	87%	90%	88%
Number in Outpatient Tx	38	52	79	124	110	131	135	132	266	310	576	972	941	965	973	816
Average Days in Outpatient Tx	8.4	13.1	16.6	31.3	36.5	37.1	56.3	68.7	15.6	18.1	31.7	58.9	58.0	52.9	61.9	55.3
Inpatient Treatment	--	--	--	--	19%	N/A	39%	35%	2%	1%	3%	7%	14%	N/A	37%	34%
Number in Inpatient Tx					25		60	51	18	16	36	94	165		406	321
Average Days in Inpatient Tx					12.5		12.5	11.1	0.5	0.8	1.9	3.6	6.7		12.6	12.8
Medication Assisted Treatment	--	--	--	--	--	25%	40%	31%	1%	1%	1%	2%	9%	16%	24%	31%
Number in Medication Assisted Tx						38	61	45	11	11	16	31	99	179	258	284

*Incomplete due to changes in reporting systems resulting from the integration of behavioral and physical health care services. See Technical Notes for details.

--Cells representing fewer than eleven individuals were suppressed to protect client confidentiality.



PIERCE County

Drug Court Employment and Earnings

Employment and Earnings

LEGEND

Employment

- █ Baseline
- - - 18 Months Post

Earnings

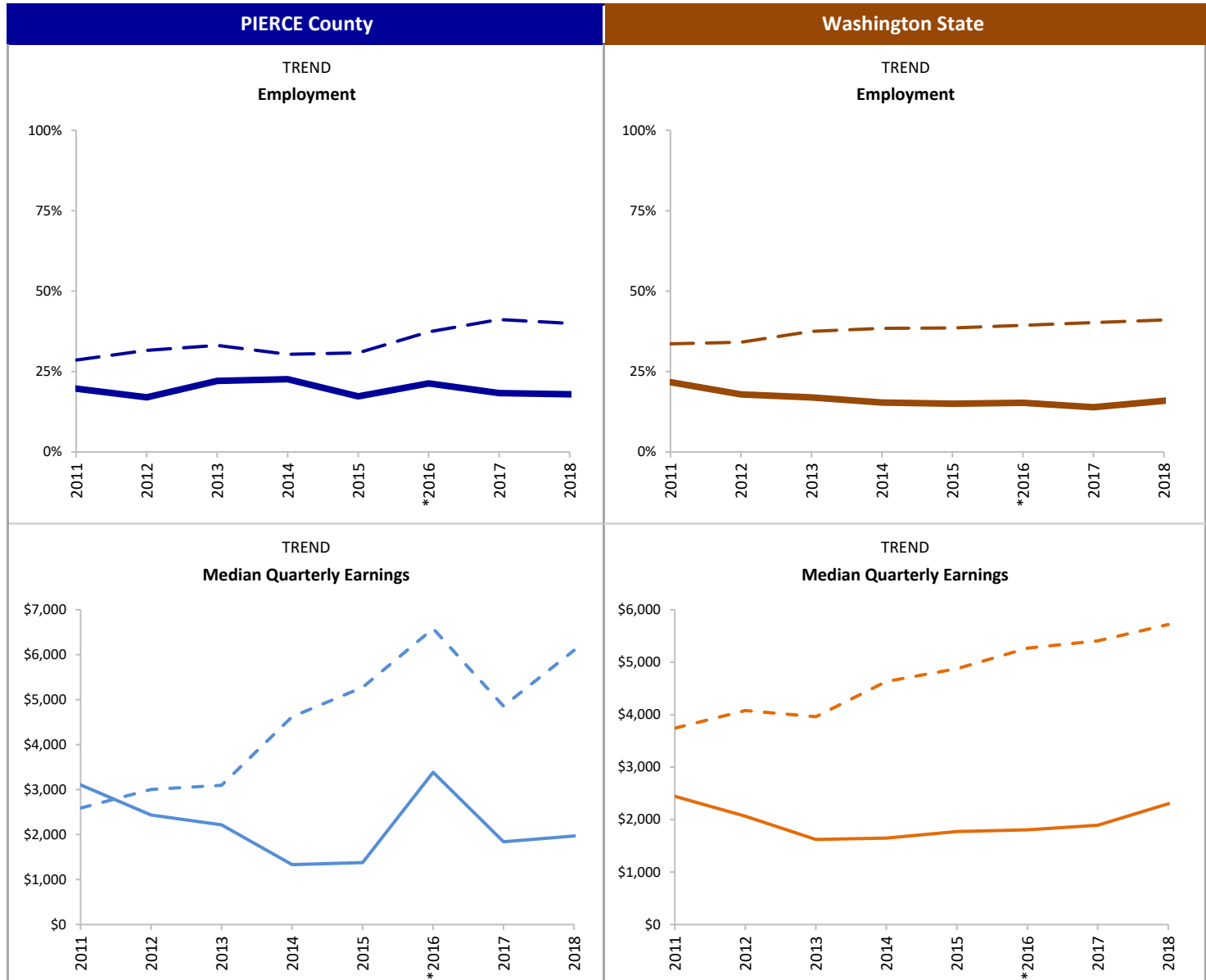
- Baseline
- - - 18 Months Post

INDICATOR

Percent of Drug Court participants employed part-time or full-time at baseline and 18 months after starting substance use disorder treatment. Baseline includes individuals with any employment in the quarter prior to starting treatment. Individuals were considered employed 18 months post if they had any earnings in the 6th quarter (18 months) after starting treatment. Median quarterly earnings is calculated only for those with non-zero earnings in the quarter.

SOURCE & POPULATION

DSHS Integrated Client Databases. Drug Court participants who started substance use disorder treatment.



SUPPORTING TABLES | **Employment**

CALENDAR YEAR	PIERCE County								Washington State							
	2011	2012	2013	2014	2015	*2016	2017	2018	2011	2012	2013	2014	2015	*2016	2017	2018
Total New Enrollment	203	212	163	168	133	150	153	145	1,166	1,196	1,104	1,288	1,154	1,112	1,086	931
Employed Prior to Enrollment																
Percent Employed Baseline	20%	17%	22%	23%	17%	21%	18%	18%	22%	18%	17%	15%	15%	15%	14%	16%
Number Employed at Baseline	40	36	36	38	23	32	28	26	253	214	187	198	173	170	151	148
Median Qtrly Earnings Baseline	\$ 3,106	\$ 2,434	\$ 2,216	\$ 1,332	\$ 1,377	\$ 3,386	\$ 1,840	\$ 1,970	\$ 2,444	\$ 2,066	\$ 1,622	\$ 1,647	\$ 1,772	\$ 1,806	\$ 1,892	\$ 2,303
Median Qtrly Hours Worked Baseline	223	185	217	124	115	276	138	120	197	186	138	132	145	139	151	145
Employed 18 Months After Enrollment																
Percent Employed 18 Months Post	29%	32%	33%	30%	31%	37%	41%	40%	34%	34%	38%	38%	39%	39%	40%	41%
Number Employed 18 Months Post	58	67	54	51	41	56	63	58	392	408	414	495	445	438	437	382
Median Qtrly Earnings 18 Mos. Post	\$ 2,590	\$ 3,004	\$ 3,096	\$ 4,622	\$ 5,274	\$ 6,581	\$ 4,858	\$ 6,101	\$ 3,743	\$ 4,078	\$ 3,961	\$ 4,633	\$ 4,876	\$ 5,268	\$ 5,408	\$ 5,719
Median Qtrly Hours 18 Mos. Post	261	232	310	355	357	445	324	343	328	366	325	355	357	369	352	377

*Incomplete due to changes in reporting systems resulting from the integration of behavioral and physical health care services. See Technical Notes for details.



PIERCE County

Drug Court Medicaid Enrollment

[Back to Contents](#)

MAY 2021

Medicaid Enrollment

LEGEND

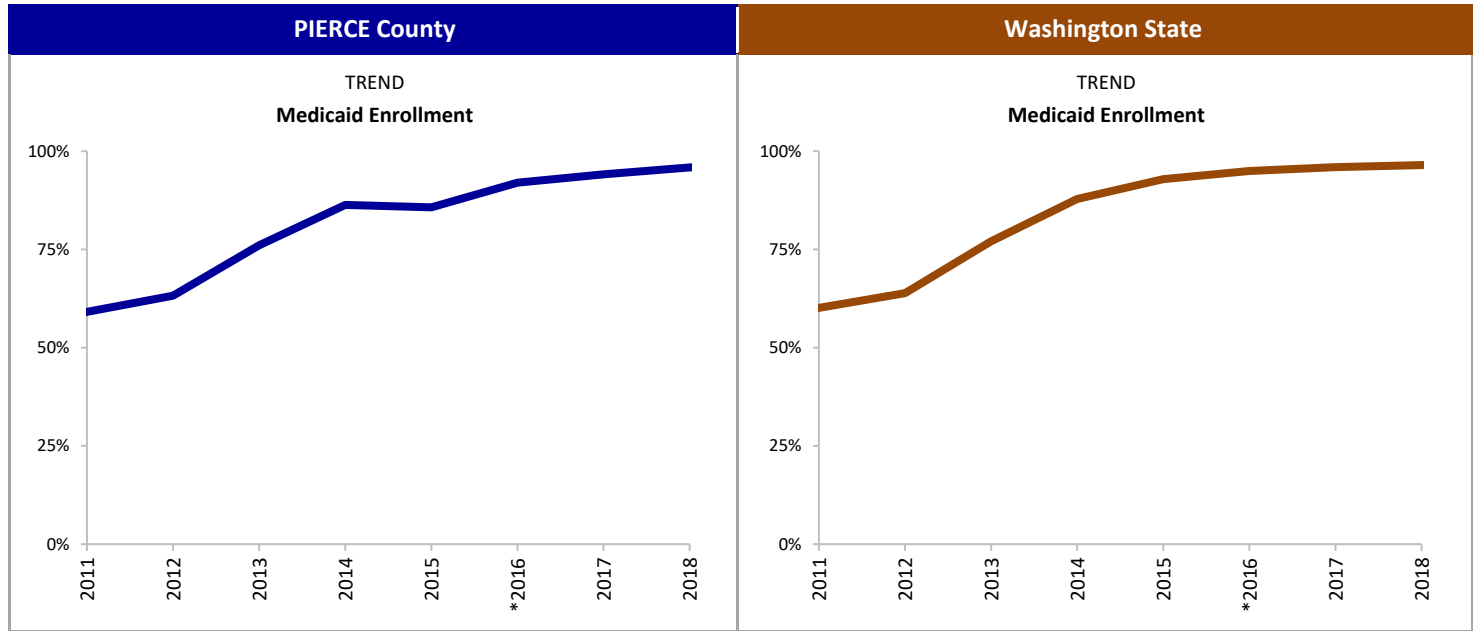
■ Percent Enrolled in Medicaid

INDICATOR

Percent of Drug Court participants enrolled in Medicaid at any point during the 12 months after starting substance use disorder treatment.

SOURCE & POPULATION

DSHS Integrated Client Databases. Drug Court participants who started substance use disorder treatment.



*Incomplete due to changes in reporting systems resulting from the integration of behavioral and physical health care services. See Technical Notes for details.

SUPPORTING TABLES | Medicaid Enrollment

CALENDAR YEAR	PIERCE County								Washington State							
	2011	2012	2013	2014	2015	*2016	2017	2018	2011	2012	2013	2014	2015	*2016	2017	2018
Total New Enrollment	203	212	163	168	133	150	153	145	1,166	1,196	1,104	1,288	1,154	1,112	1,086	931
Medicaid Enrollment																
Percent Enrolled in Medicaid	59%	63%	76%	86%	86%	92%	94%	96%	60%	64%	77%	88%	93%	95%	96%	96%
Number Enrolled in Medicaid	120	134	124	145	114	138	144	139	701	764	851	1,131	1,072	1,056	1,042	898



PIERCE County

Drug Court Participants: Recidivism and Key Outcome Measures

[Back to Contents](#)

MAY 2021

TECHNICAL NOTES

POPULATION

- **Total New Enrollment:** Includes all new Drug Court participants who started substance use disorder treatment within 12 months of their Drug Court start date. The dashboard indicators are based on the enrolled population. Blank cells indicate data were missing or suppressed due to fewer than 10 enrolled participants.
- The decrease in new enrollment in 2016 is due to underreporting of treatment records during the implementation of a new behavioral health data system and the integration of behavioral and physical health care. It should not be interpreted as a decrease in the number of individuals participating in Drug Courts. Future updates will address this shortcoming with available data.

INDICATORS

- **Recidivism:** Defined as a new conviction for an offense that occurred 18 or 36 months after the month the participant started substance use disorder treatment. The conviction may occur anytime after the offense date. The average number of prior convictions is based on a count of all charges that resulted in a conviction for offenses that occurred prior to the treatment start date. Conviction data were obtained from the Administrative Office of the Courts.
- **Substance Use Disorder Treatment:** The Washington Circle Measure of Engagement is defined as initiating substance use disorder treatment and receiving two additional services within 30 days of initiation. Retention is an additional measure used in Washington State which is defined as receiving treatment services at least once per month for the first 90 days after initiation, or completing treatment and being discharged within 90 days, or transferring to a residential treatment facility within 90 days. Engagement and Retention measures are calculated only for those whose first treatment episode was an outpatient service. Data from the Treatment and Assessment Report Generation Tool (TARGET) and the Behavioral Health Data System (BHDS) were used to identify substance use disorder treatment, primary substance and average days of treatment. Treatment shown is not necessarily the treatment approved by the court. Due to changes in the behavioral health data system, the engagement and retention measures are not currently available.
- **Employment:** Quarterly employment and earnings data were obtained from the Washington State Employment Security Department. Median quarterly earnings and hours worked are reported only for individuals with non-zero earnings during the quarter.
- **Medicaid Enrollment:** Obtained from eligibility codes available in the DSHS Integrated Client Database (ICDB).

DATA SOURCES

- DSHS Integrated Client Database
- Washington State Drug Courts
- Drug Court Case Management System (DCCM)
- Administrative Office of the Courts Adult Drug Court Docket Codes

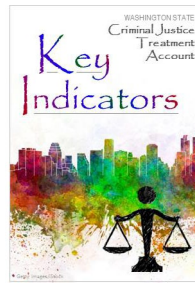
MISSING DATA

- Klickitat, Pacific, Skagit and Whitman county Drug Court data are missing for 2016.

PIERCE County

Drug Court Participants: Recidivism and Key Outcome Measures

MAY 2021



CONTRIBUTORS

Tasha Fox, RDA • Paula Henzel, RDA • Jim Mayfield, RDA • Callie Black, RDA • Barbara E.M. Felver, RDA

<https://www.dshs.wa.gov/rda>