

KING County

Drug Court Participants: Recidivism and Key Outcome Measures

NOVEMBER 2018

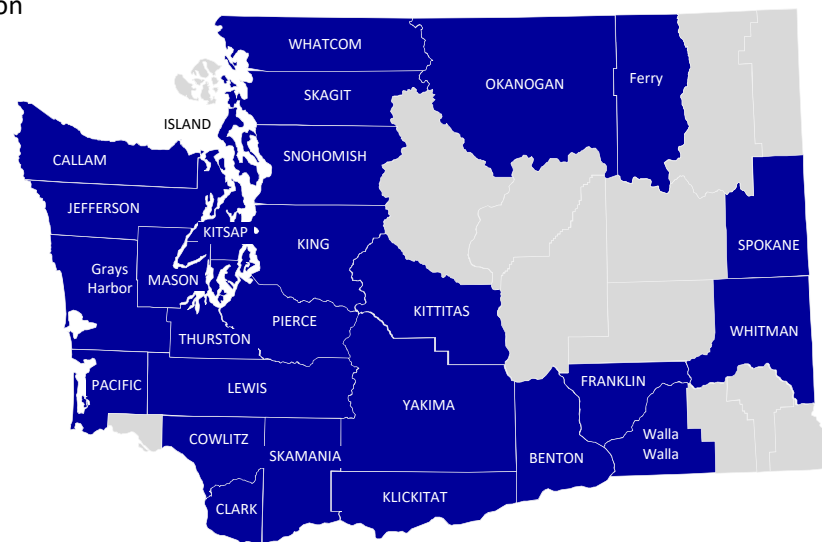
This dashboard presents indicators for monitoring recidivism and other key outcomes among offenders participating in Adult Drug Court. Drug Courts aim to reduce recidivism through judicially supervised substance use disorder treatment, mandatory periodic drug testing, community supervision, use of sanctions and other rehabilitation services. County-level and statewide trends in drug court enrollment, demographics, recidivism, substance use disorder treatment participation, employment and Medicaid coverage rates are presented for individuals admitted to drug courts. Dashboard indicators are presented only for individuals who started substance use disorder treatment. Due to recent initiatives to integrate behavioral and physical health and changes in associated reporting systems (including the elimination of TARGET), new enrollments for 2016 may be underreported and should not be interpreted as a decrease in the number of individuals participating in drug courts. Because Clark and Skamania counties were "early adopters" of integrated behavioral health and physical health care, 2016 dashboard indicators for these two counties were particularly impacted by these reporting changes. This is part of a series of analyses for the HCA Division of Behavioral Health and Recovery describing the experiences of recipients of treatment funded by the Criminal Justice Treatment Account (CJTA). The CJTA pays for substance use disorder treatment and recovery support services for offenders with substance abuse problems.

These measures were produced by the DSHS Research and Data Analysis Division in collaboration with:

- HCA Division of Behavioral Health and Recovery
- Washington State Adult Drug Courts

In 2018, twenty-seven counties in Washington state offered Adult Drug Courts including:

- Benton
- Clallam
- Clark
- Cowlitz
- Ferry
- Franklin
- Grays Harbor
- Island
- Jefferson
- King
- Kitsap
- Kittitas
- Klickitat
- Lewis
- Mason
- Okanogan
- Pacific
- Pierce
- Skagit
- Skamania
- Snohomish
- Spokane
- Thurston
- Walla Walla
- Whatcom
- Whitman
- Yakima





KING County

Drug Court Participants: Recidivism and Key Outcome Measures

NOVEMBER 2018

CONTENTS

▶▶▶ **At a Glance**

▶▶▶ **New Enrollment**

Supporting Tables: New Enrollment

▶▶▶ **Recidivism at 18-Months and Average Prior Convictions**

Supporting Tables: Recidivism at 18-Months and Prior Convictions

▶▶▶ **Recidivism at 36-Months and Average Prior Convictions**

Supporting Tables: Recidivism at 36-Months and Prior Convictions

▶▶▶ **Substance Use Disorder Treatment Participation**

Supporting Tables: Substance Use Disorder Treatment

▶▶▶ **Employment**

Supporting Tables: Employment

▶▶▶ **Medicaid Enrollment**

Supporting Tables: Medicaid Enrollment

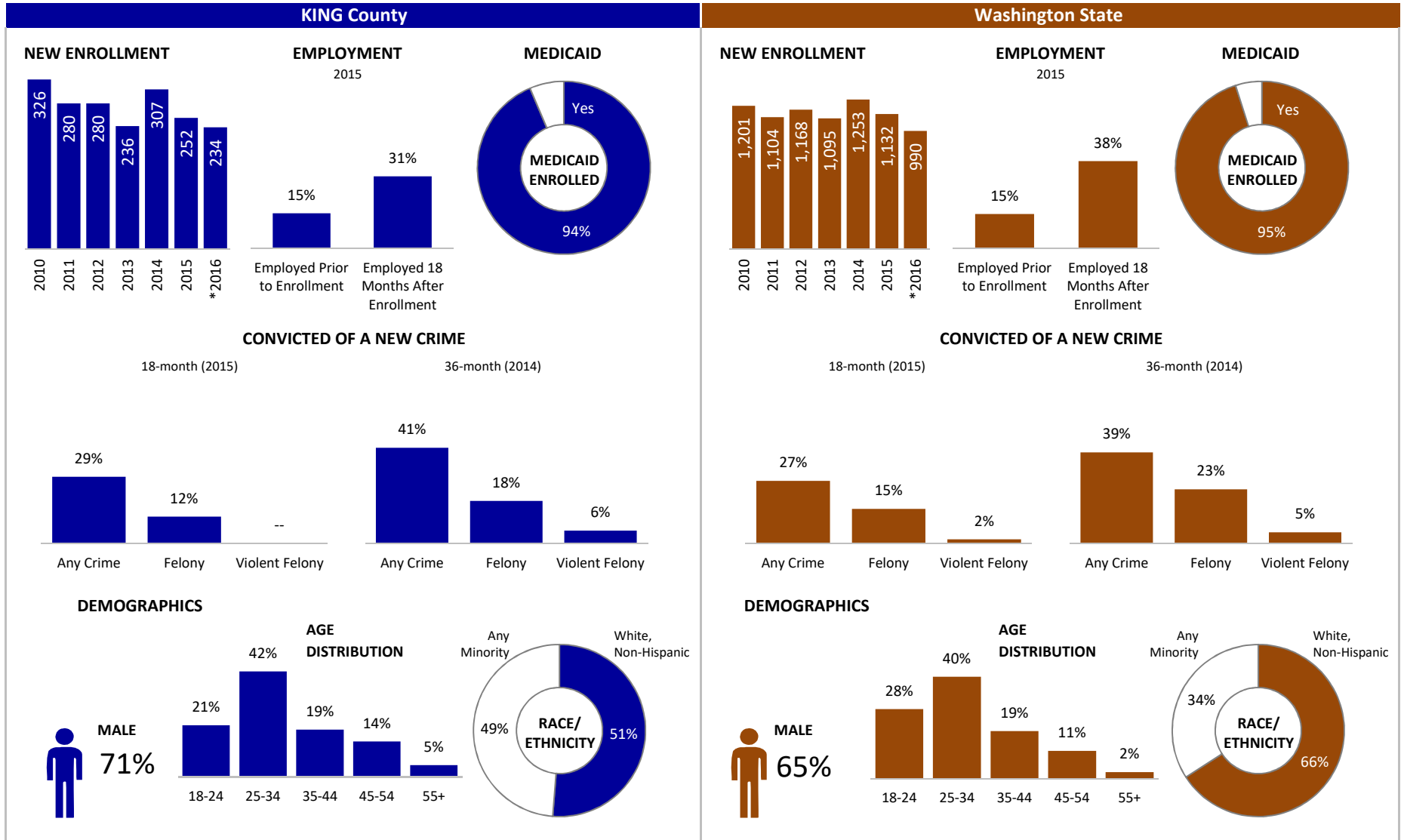
▶▶▶ **Technical Notes**



KING County

Drug Court Participants: Recidivism and Key Outcome Measures

AT A GLANCE | 2016



*Incomplete due to changes in reporting systems resulting from the integration of behavioral and physical health care services. See technical notes for details.

--Cells representing fewer than eleven individuals were suppressed to protect client confidentiality.



KING County

Drug Court New Enrollment

New Enrollment

LEGEND

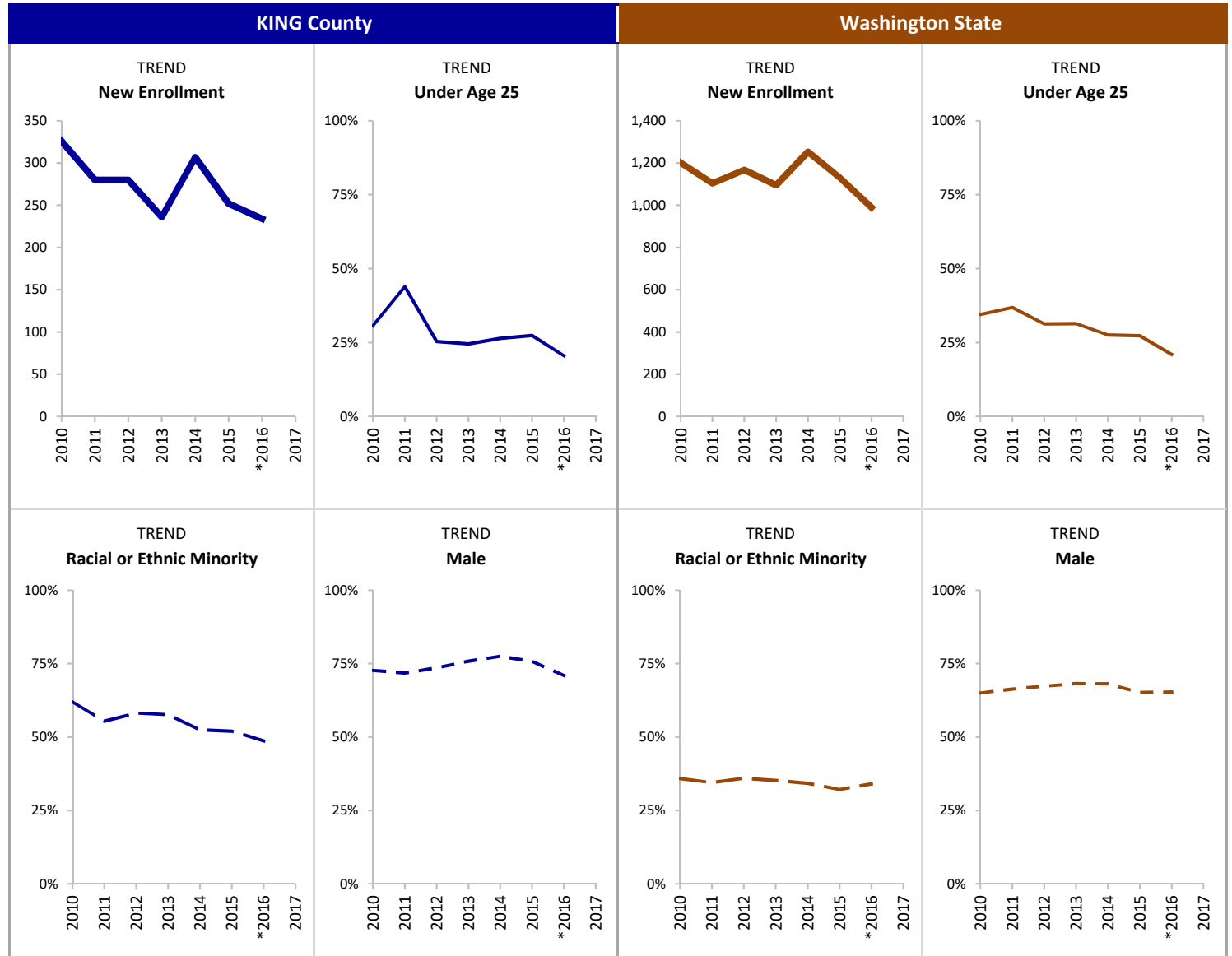
- New Enrollment
- Under Age 25
- Racial or Ethnic Minority
- - - Male

INDICATOR

New enrollment includes only new drug court participants who started substance use disorder treatment.

SOURCE & POPULATION

DSHS Integrated Client Databases. New drug Court participants who started substance use disorder treatment.



*Incomplete due to changes in reporting systems resulting from the integration of behavioral and physical health care services. See technical notes for details.

SUPPORTING TABLES | **New Enrollment**

CALENDAR YEAR	KING County								Washington State							
	2010	2011	2012	2013	2014	2015	*2016	2017	2010	2011	2012	2013	2014	2015	*2016	2017
Total New Enrollment	326	280	280	236	307	252	234		1,201	1,104	1,168	1,095	1,253	1,132	990	
New Enrolled Population by Age																
18-24	31%	44%	25%	25%	26%	27%	21%		34%	37%	31%	31%	28%	27%	21%	
Total Age 18-24	100	123	71	58	81	69	48		414	407	366	344	345	309	208	
25-34	31%	27%	34%	36%	28%	37%	42%		35%	34%	38%	38%	40%	45%	47%	
Total Age 25 - 34	100	75	95	86	85	92	98		425	380	438	415	505	510	465	
35-44	20%	13%	21%	17%	22%	20%	19%		19%	16%	17%	17%	19%	18%	21%	
Total Age 35-44	64	36	60	41	67	51	44		224	182	199	188	235	200	206	
45-54	15%	13%	15%	17%	19%	11%	14%		10%	11%	11%	11%	11%	7%	9%	
Total Age 45-54	50	37	43	40	58	27	33		118	119	132	115	137	80	89	
55+	4%	--	4%	5%	5%	5%	5%		2%	1%	3%	3%	2%	3%	2%	
Total Age 55 and Older	12		11	11	16	13	11		20	16	33	33	31	33	22	
New Enrolled Pop. by Race-Ethnicity																
American Native	17%	9%	11%	11%	10%	13%	12%		13%	10%	11%	11%	11%	11%	12%	
Total American Native	54	26	31	25	32	32	28		151	107	134	125	139	129	120	
Asian	7%	6%	8%	7%	12%	8%	7%		4%	5%	5%	5%	6%	5%	5%	
Total Asian	22	16	21	17	36	19	16		45	50	57	52	72	56	45	
African American	39%	35%	39%	37%	26%	29%	28%		15%	13%	15%	14%	12%	12%	12%	
Total African American	126	99	110	88	81	72	65		178	149	178	152	146	139	122	
Hawaiian/PI	--	--	--	5%	5%	--	--		2%	3%	3%	3%	3%	3%	3%	
Total Hawaiian/PI				12	15				22	38	33	35	38	29	31	
Hispanic	12%	10%	11%	9%	10%	10%	11%		9%	10%	9%	8%	8%	8%	10%	
Total Hispanic	38	27	32	22	31	24	25		109	106	102	93	104	87	97	
White Non-Hispanic	38%	44%	42%	42%	48%	48%	51%		64%	65%	64%	65%	66%	68%	66%	
Total White Non-Hispanic	123	124	117	99	146	121	120		767	721	748	708	824	768	652	
Any Minority	62%	55%	58%	58%	52%	52%	49%		36%	35%	36%	35%	34%	32%	34%	
Total Any Minority	202	155	163	136	161	131	114		431	381	420	386	429	364	337	
New Enrolled Population by Gender																
Female	27%	28%	26%	24%	22%	24%	29%		35%	34%	33%	32%	32%	35%	35%	
Total Female	89	79	74	57	69	61	68		420	372	382	348	399	394	343	
Male	73%	72%	74%	76%	78%	76%	71%		65%	66%	67%	68%	68%	65%	65%	
Total Male	237	201	206	179	238	191	166		781	732	786	747	854	738	647	

*Incomplete due to changes in reporting systems resulting from the integration of behavioral and physical health care services. See technical notes for details

--Cells representing fewer than eleven individuals were suppressed to protect client confidentiality.



KING County

Recidivism at 18-Months: Percent Convicted of a New Offense and Average Prior Convictions

NOVEMBER 2018

18-Month Recidivism and Prior Convictions

LEGEND

New Conviction: Type of Offense

- █ Any Crime
- █ Felony

Prior Convictions

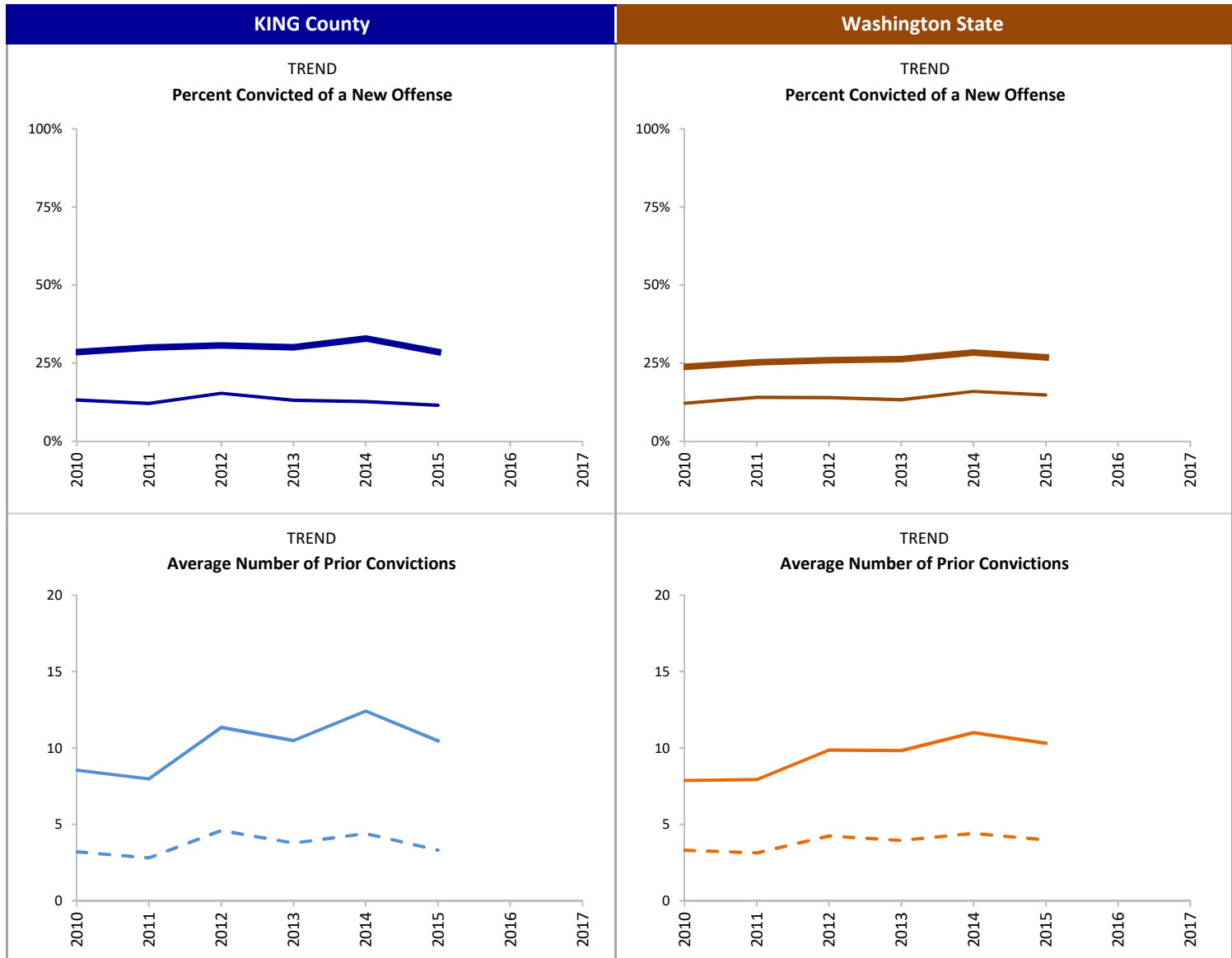
- Any Prior
- - - Felony Prior

INDICATOR

Percent of drug court participants convicted of a new offense, committed within 18-months after starting substance use disorder treatment.
Average number of prior convictions is based on a count of each charge that resulted in a conviction prior to starting treatment.

SOURCE & POPULATION

DSHS Integrated Client Databases. Drug Court participants who started substance use disorder treatment.



SUPPORTING TABLES | 18-Month Recidivism and Prior Convictions

CALENDAR YEAR	KING County								Washington State							
	2010	2011	2012	2013	2014	2015	2016	2017	2010	2011	2012	2013	2014	2015	2016	2017
Total New Enrollment	326	280	280	236	307	252			1,201	1,104	1,168	1,095	1,253	1,132		
NEW Conviction (18-Months)																
Any Crime	29%	30%	31%	30%	33%	29%			24%	25%	26%	26%	28%	27%		
Total with Any Crime	93	84	86	71	101	72			286	279	303	288	356	304		
Felony	13%	12%	15%	13%	13%	12%			12%	14%	14%	13%	16%	15%		
Total with a Felony	43	34	43	31	39	29			146	155	163	146	200	168		
Violent Felony	--	--	4%	--	--	--			2%	2%	3%	2%	3%	2%		
Total with a Violent Felony			12						21	21	33	19	37	21		
Average Number PRIOR Convictions																
Any Crime	8.6	8.0	11.4	10.5	12.4	10.5			7.9	7.9	9.9	9.8	11.0	10.3		
Total with Any Crime	300	256	258	219	285	237			1,100	1,026	1,085	1,040	1,186	1,087		
Felony	3.2	2.8	4.6	3.8	4.4	3.3			3.3	3.1	4.2	3.9	4.4	4.0		
Total with Any Felony	225	192	220	171	224	177			889	809	922	865	1,001	907		
Violent Felony	0.1	0.1	0.2	0.2	0.2	0.2			0.1	0.1	0.2	0.2	0.2	0.3		
Total with a Violent Felony	28	27	38	29	40	29			120	131	185	178	213	193		
Non-Violent Felony	3.1	2.7	4.4	3.6	4.2	3.1			3.2	3.0	4.0	3.7	4.2	3.7		
Total with a Non-Violent Felony	225	192	220	171	224	177			889	809	922	865	1,001	907		
Misdemeanor	5.3	5.2	6.8	6.7	8.0	7.2			4.6	4.8	5.6	5.9	6.6	6.3		
Total with a Misdemeanor	286	233	245	212	276	224			1,011	942	1,018	977	1,124	1,030		

--Cells representing fewer than eleven individuals were suppressed to protect client confidentiality.



KING County

Recidivism at 36-Months: Percent Convicted of a New Offense and Average Prior Convictions

NOVEMBER 2018

36-Month Recidivism and Prior Convictions

LEGEND

New Conviction: Type of Offense

- █ Any Crime
- █ Felony

Prior Convictions

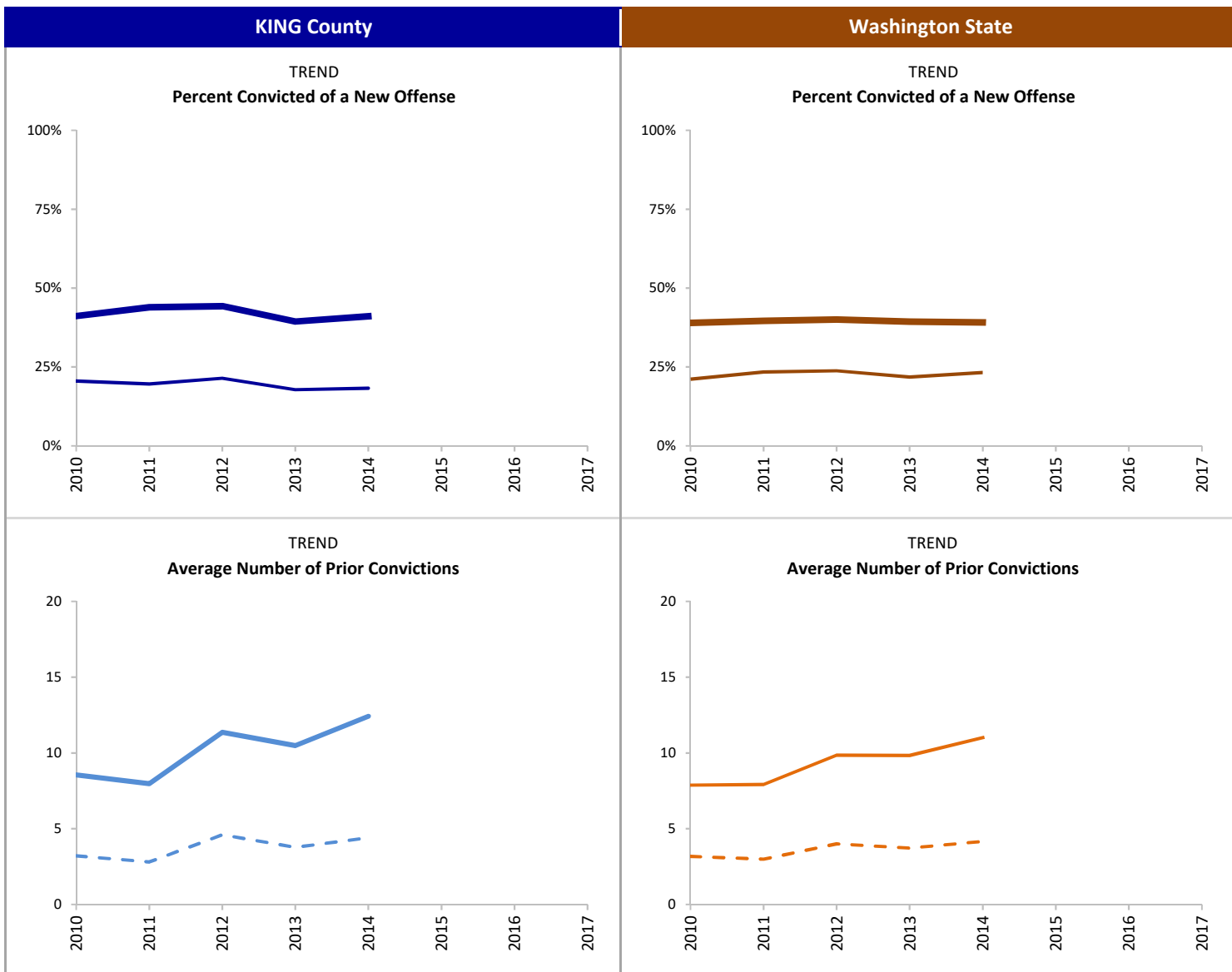
- Any Prior
- - - Felony Prior

INDICATOR

Percent of drug court participants convicted of a new offense, committed within 36-months after starting substance use disorder treatment. Average number of prior convictions is based on a count of each charge that resulted in a conviction prior to starting treatment.

SOURCE & POPULATION

DSHS Integrated Client Databases. Drug Court participants who started substance use disorder treatment.



SUPPORTING TABLES | **36-Month Recidivism and Prior Convictions**

CALENDAR YEAR	KING County							Washington State								
	2010	2011	2012	2013	2014	2015	2016	2017	2010	2011	2012	2013	2014	2015	2016	2017
Total New Enrollment	326	280	280	236	307				1,201	1,104	1,168	1,095	1,253			
NEW Conviction (36-Months)																
Any Crime	41%	44%	44%	39%	41%				39%	40%	40%	39%	39%			
Total with Any Crime	134	123	124	93	126				468	437	468	431	490			
Felony	21%	20%	21%	18%	18%				21%	23%	24%	22%	23%			
Total with a Felony	67	55	60	42	56				254	259	278	239	291			
Violent Felony	3%	--	7%	--	6%				4%	4%	6%	4%	5%			
Total with a Violent Felony	11		19		17				46	46	66	42	60			
Average Number PRIOR Convictions																
Any Crime	8.6	8.0	11.4	10.5	12.4				7.9	7.9	9.9	9.8	11.0			
Total with Any Crime	300	256	258	219	285				1,100	1,026	1,085	1,040	1,186			
Felony	3.2	2.8	4.6	3.8	4.4				3.3	3.1	4.2	3.9	4.4			
Total with Any Felony	225	192	220	171	224				889	809	922	865	1,001			
Violent Felony	0.1	0.1	0.2	0.2	0.2				0.1	0.1	0.2	0.2	0.2			
Total with a Violent Felony	28	27	38	29	40				120	131	185	178	213			
Non-Violent Felony	3.1	2.7	4.4	3.6	4.2				3.2	3.0	4.0	3.7	4.2			
Total with a Non-Violent Felony	225	192	220	171	224				889	809	922	865	1,001			
Misdemeanor	5.3	5.2	6.8	6.7	8.0				4.6	4.8	5.6	5.9	6.6			
Total with a Misdemeanor	286	233	245	212	276				1,011	942	1,018	977	1,124			



KING County

Drug Court Substance Use Disorder Treatment Participation

Substance Use Disorder Treatment

LEGEND

Engagement and Retention

- █ Engaged in Treatment
- █ Retained in Treatment

Primary Substance

- █ Heroin/Other Opioids
- █ Methamphetamine

Average Days of SUD Tx

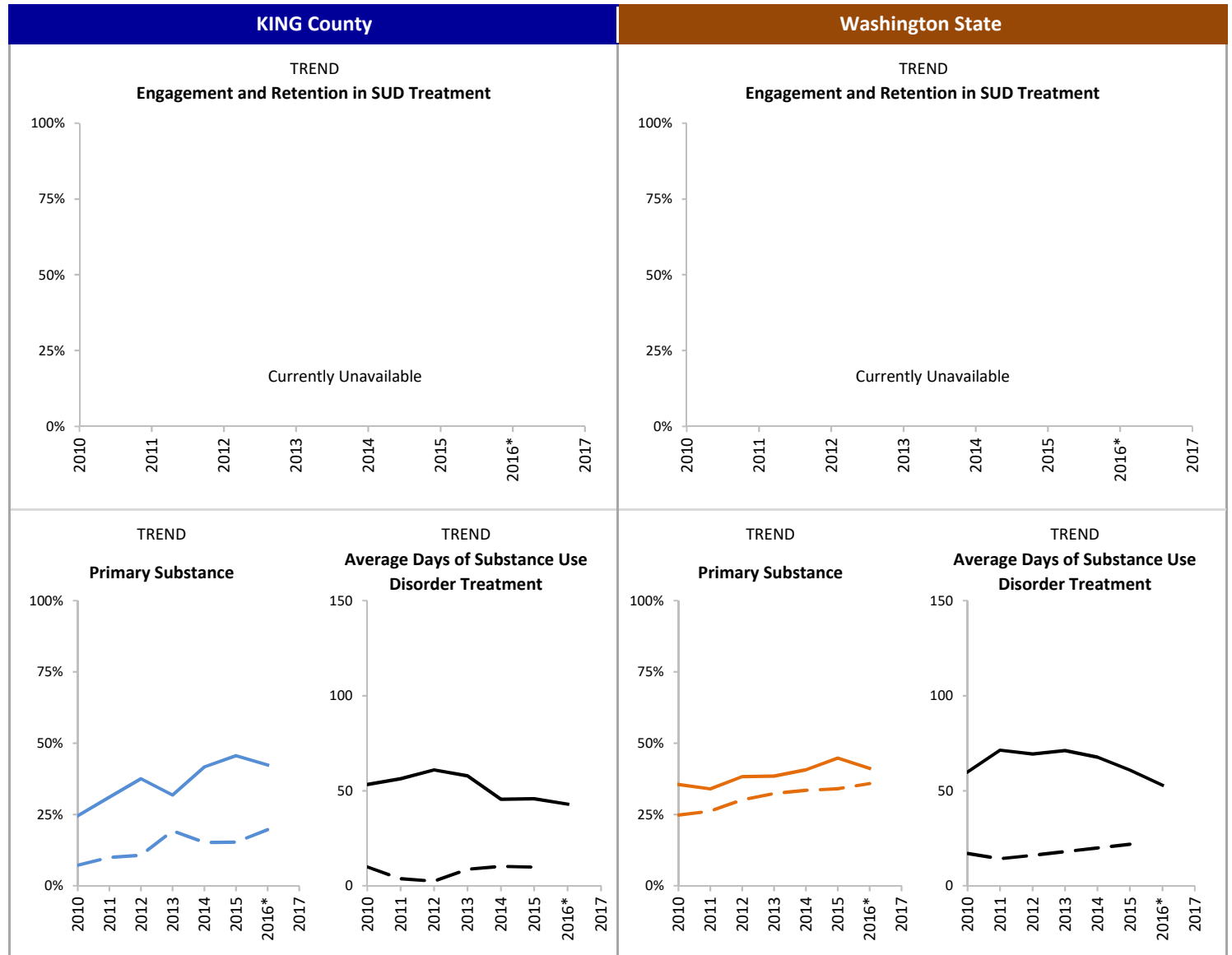
- █ Outpatient
- █ Inpatient

INDICATOR

Percent of drug court participants with Engagement and Retention in substance use disorder treatment. Engagement is defined as initiating treatment and receiving two additional services within 30 days after initiation. Retention is defined as receiving treatment services at least once per month for the first 90 days after initiation (see Technical Notes for full definition).

SOURCE & POPULATION

DSHS Integrated Client Databases. Drug Court participants who started substance use disorder treatment.



*Incomplete due to changes in reporting systems resulting from the integration of behavioral and physical health care services. See technical notes for details.

SUPPORTING TABLES | Substance Use Disorder Treatment

CALENDAR YEAR	KING County							Washington State								
	2010	2011	2012	2013	2014	2015	2016*	2017	2010	2011	2012	2013	2014	2015	2016*	2017
Total New Enrollment	326	280	280	236	307	252	234		1,201	1,104	1,168	1,095	1,253	1,132	990	
Engagement and Retention																
Engagement																
Total Engaged in Treatment	Currently Unavailable							Currently Unavailable								
Retention																
Total Retained in Treatment																
Primary Substance																
Heroin and Other Opioids	25%	31%	38%	32%	42%	46%	42%		35%	34%	38%	38%	41%	45%	41%	
Total Heroin and Other Opioids	80	87	105	75	128	115	99		426	375	447	421	510	507	407	
Methamphetamine	7%	10%	11%	19%	15%	15%	20%		25%	26%	30%	32%	33%	34%	36%	
Total Methamphetamine	23	27	29	44	45	37	38		296	287	350	352	416	379	318	
Cannabis	20%	29%	23%	22%	12%	13%	10%		14%	19%	14%	13%	10%	9%	8%	
Total Cannabis	64	79	61	51	36	31	19		163	210	160	140	122	97	68	
Alcohol	19%	15%	10%	11%	12%	13%	7%		13%	11%	8%	9%	8%	7%	6%	
Total Alcohol	60	40	26	26	36	32	13		157	122	96	93	95	75	54	
Type of SUD Treatment																
Outpatient Treatment	88%	93%	89%	90%	82%	93%	93%		95%	95%	95%	95%	92%	93%	93%	
Number in Outpatient Tx	288	260	250	212	251	235	218		1,141	1,053	1,107	1,035	1,154	1,057	916	
Average Days in Outpatient Tx	53.3	56.3	60.9	57.9	45.6	45.8	43.0		60.0	71.3	69.3	71.2	67.6	60.9	52.9	
Inpatient Treatment	14%	9%	5%	13%	15%	13%	N/A		28%	28%	30%	33%	35%	40%	N/A	
Number in Inpatient Tx	45	25	14	30	45	33			332	310	349	365	433	453		
Average Days in Inpatient Tx	10.0	3.6	2.4	8.6	10.2	9.7			17.0	14.2	16.0	17.9	19.9	21.8		
Medication Assisted Treatment	18%	21%	26%	22%	32%	37%	39%		7%	6%	8%	7%	11%	15%	21%	
Number in Medication Assisted Tx	58	58	72	53	97	94	91		82	68	91	75	144	167	208	

*Incomplete due to changes in reporting systems resulting from the integration of behavioral and physical health care services. See technical notes for details

--Cells representing fewer than eleven individuals were suppressed to protect client confidentiality.



KING County

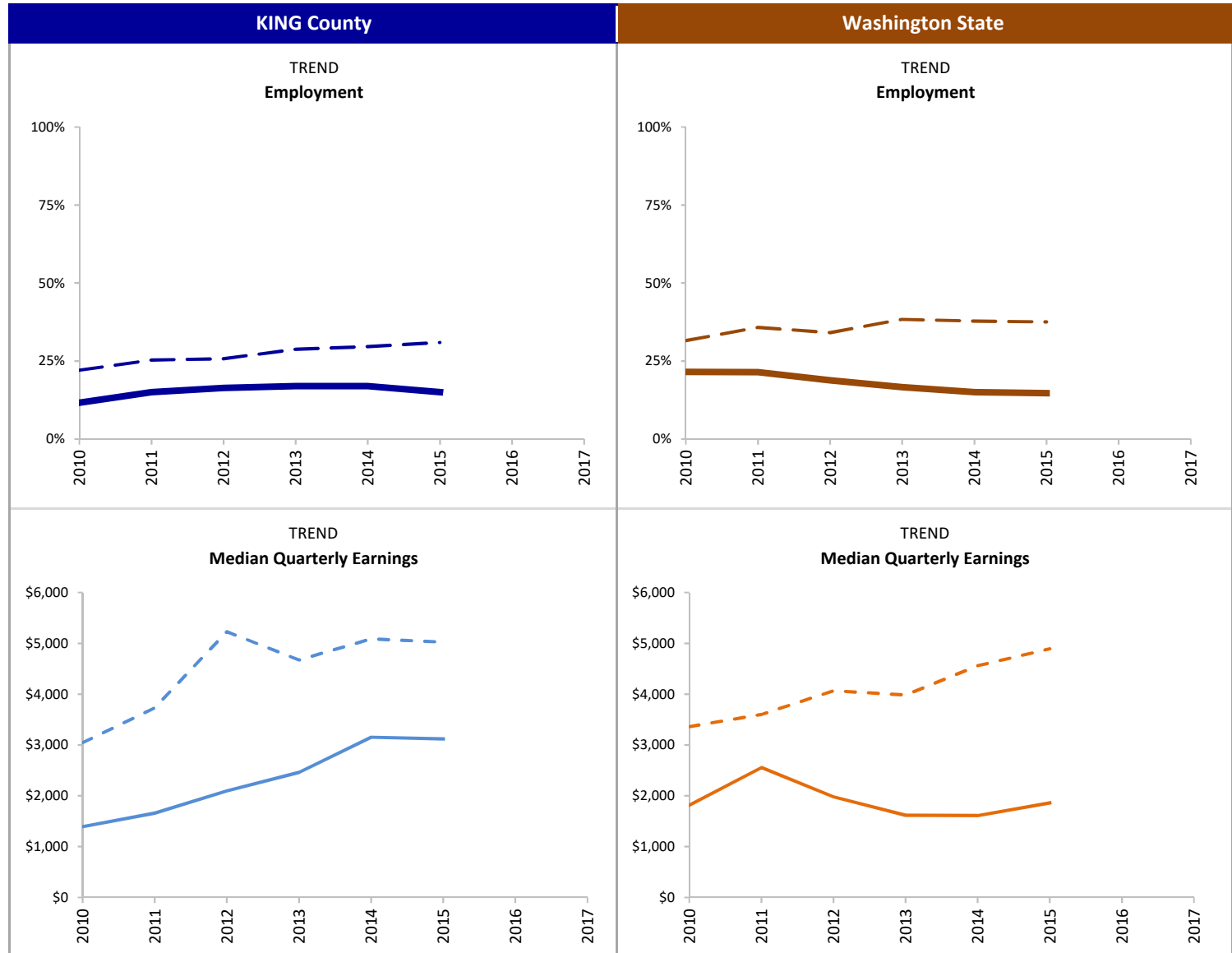
Drug Court Employment and Earnings

Employment and Earnings

- LEGEND**
- Employment**
- Baseline
 - - 18-Months Post
- Earnings**
- Baseline
 - - 18-Months Post

INDICATOR
 Percent of drug court participants employed part-time or full-time at baseline and 18-months after starting substance use disorder treatment. Baseline includes individuals with any employment in the quarter prior to starting treatment. Individuals were considered employed 18-months post if they had any earnings in the 6th quarter (18-months) after starting treatment. Median quarterly earnings is calculated only for those with non-zero earnings in the quarter.

SOURCE & POPULATION
 DSHS Integrated Client Databases. Drug Court participants who started substance use disorder treatment.



*Incomplete due to changes in reporting systems resulting from the integration of behavioral and physical health care services. See technical notes for details.
 --Data was suppressed.

SUPPORTING TABLES | **Employment**

CALENDAR YEAR	KING County							Washington State								
	2010	2011	2012	2013	2014	2015	2016	2017	2010	2011	2012	2013	2014	2015	2016	2017
Total New Enrollment	326	280	280	236	307	252			1,201	1,104	1,168	1,095	1,253	1,132		
Employed Prior to Enrollment																
Percent Employed Baseline	12%	15%	16%	17%	17%	15%			22%	21%	19%	17%	15%	15%		
Number Employed at Baseline	38	42	46	40	52	38			259	237	220	182	188	167		
Median Qtrly Earnings Baseline	\$ 1,393	\$ 1,660	\$ 2,091	\$ 2,463	\$ 3,152	\$ 3,121			\$ 1,815	\$ 2,555	\$ 1,980	\$ 1,619	\$ 1,610	\$ 1,860		
Median Qtrly Hours Worked Baseline	156	172	202	196	254	212			164	208	166	141	130	153		
Employed 18 Months After Enrollment																
Percent Employed 18-Months Post	22%	25%	26%	29%	30%	31%			32%	36%	34%	38%	38%	38%		
Number Employed 18-Months Post	72	71	72	68	91	78			379	395	398	420	474	425		
Median Qtrly Earnings 18-Mos. Post	\$ 3,044	\$ 3,727	\$ 5,229	\$ 4,673	\$ 5,087	\$ 5,025			\$ 3,360	\$ 3,601	\$ 4,067	\$ 3,984	\$ 4,558	\$ 4,893		
Median Qtrly Hours 18-Mos. Post	252	324	395	344	374	327			309	320	359	328	360	357		

--Cells representing fewer than eleven individuals were suppressed to protect client confidentiality.



KING County

Drug Court Medicaid Enrollment

Medicaid Enrollment

LEGEND

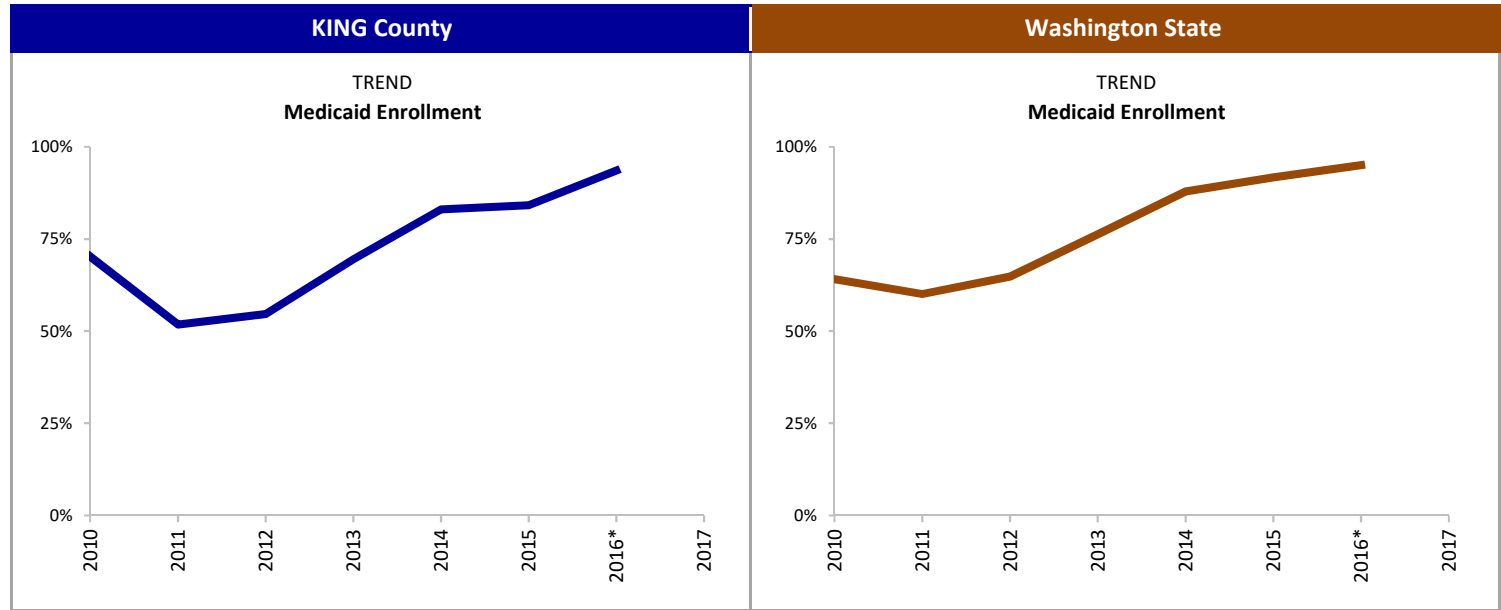
— Percent Enrolled in Medicaid

INDICATOR

Percent of drug court participants enrolled in Medicaid at any point during the 12-months after starting substance use disorder treatment.

SOURCE & POPULATION

DSHS Integrated Client Databases. Drug Court participants who started substance use disorder treatment.



*Incomplete due to changes in reporting systems resulting from the integration of behavioral and physical health care services. See technical notes for details.

SUPPORTING TABLES | Medicaid Enrollment

CALENDAR YEAR	KING County								Washington State							
	2010	2011	2012	2013	2014	2015	2016*	2017	2010	2011	2012	2013	2014	2015	2016*	2017
Total New Enrollment	326	280	280	236	307	252	234		1,201	1,104	1,168	1,095	1,253	1,132	990	
Medicaid Enrollment																
Percent Enrolled in Medicaid	70%	52%	55%	69%	83%	84%	94%		64%	60%	65%	76%	88%	92%	95%	
Number Enrolled in Medicaid	229	145	153	164	255	212	219		770	663	757	835	1,101	1,038	941	



TECHNICAL NOTES

POPULATION

- **Total New Enrollment:** Includes all new drug court participants who started substance use disorder treatment within 12-months of their drug court start date. The dashboard indicators are based on the enrolled population. Blank cells indicate data were missing or suppressed due to fewer than 10 enrolled participants.
- The decrease in new enrollment in 2016 is due to underreporting of treatment records during the implementation of a new behavioral health data system and the integration of behavioral and physical health care. It should not be interpreted as a decrease in the number of individuals participating in drug courts. Future updates will address this shortcoming with available data.

INDICATORS

- **Recidivism:** Defined as a new conviction for an offense that occurred 18- or 36-months after the month the participant started substance use disorder treatment. The conviction may occur anytime after the offense date. The average number of prior convictions is based on a count of all charges that resulted in a conviction for offenses that occurred prior to the treatment start date. Conviction data were obtained from the Administrative Office of the Courts.
- **Substance Use Disorder Treatment:** The Washington Circle Measure of Engagement is defined as initiating substance use disorder treatment and receiving two additional services within 30 days of initiation. Retention is an additional measure used in Washington State which is defined as receiving treatment services at least once per month for the first 90 days after initiation, or completing treatment and being discharged within 90 days, or transferring to a residential treatment facility within 90 days. Engagement and Retention measures are calculated only for those whose first treatment episode was an outpatient service. Data from the Treatment and Assessment Report Generation Tool (TARGET) and the Behavioral Health Data System (BHDS) were used to identify substance use disorder treatment, primary substance and average days of treatment. Treatment shown is not necessarily the treatment approved by the court. Due to changes in the behavioral health data system, the engagement and retention measures are not currently available.
- **Employment:** Quarterly employment and earnings data were obtained from the Washington State Employment Security Department. Median quarterly earnings and hours worked is reported only for individuals with non-zero earnings during the quarter.
- **Medicaid Enrollment:** Obtained from eligibility codes available in the DSHS Integrated Client Database (ICDB).

DATA SOURCES

- DSHS Integrated Client Database
- Washington State Drug Courts
- Drug Court Case Management System (DCCM)
- Administrative Office of the Courts Adult Drug Court Docket Codes

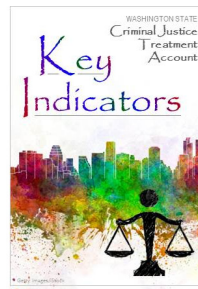
MISSING DATA

- Klickitat, Pacific, Skagit and Whitman county drug court data are missing for 2016.

KING County

Drug Court Participants: Recidivism and Key Outcome Measures

NOVEMBER 2018



CONTRIBUTORS

Paula Henzel, RDA • Jim Mayfield, RDA • Callie Black, RDA • Barbara E.M. Felver, RDA

<https://www.dshs.wa.gov/rda>