

PIERCE County

Drug Court Participants: Recidivism and Key Outcome Measures

NOVEMBER 2018

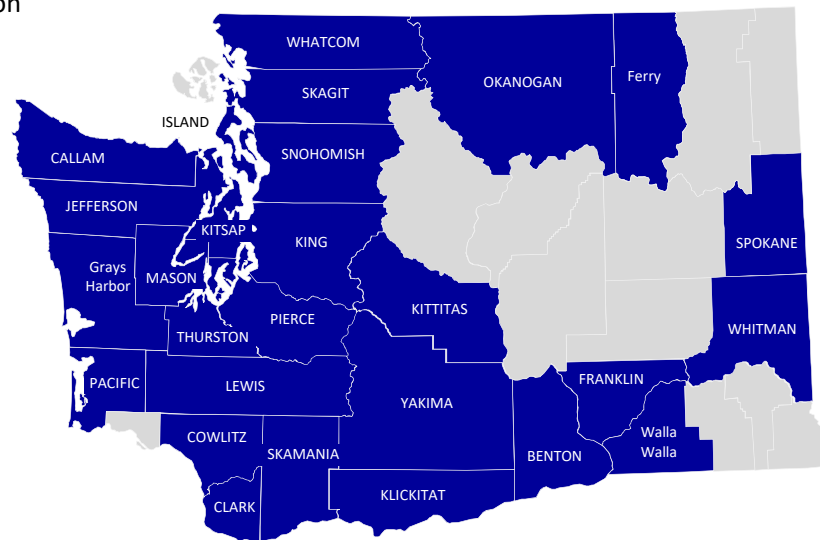
This dashboard presents indicators for monitoring recidivism and other key outcomes among offenders participating in Adult Drug Court. Drug Courts aim to reduce recidivism through judicially supervised substance use disorder treatment, mandatory periodic drug testing, community supervision, use of sanctions and other rehabilitation services. County-level and statewide trends in drug court enrollment, demographics, recidivism, substance use disorder treatment participation, employment and Medicaid coverage rates are presented for individuals admitted to drug courts. Dashboard indicators are presented only for individuals who started substance use disorder treatment. Due to recent initiatives to integrate behavioral and physical health and changes in associated reporting systems (including the elimination of TARGET), new enrollments for 2016 may be underreported and should not be interpreted as a decrease in the number of individuals participating in drug courts. Because Clark and Skamania counties were "early adopters" of integrated behavioral health and physical health care, 2016 dashboard indicators for these two counties were particularly impacted by these reporting changes. This is part of a series of analyses for the HCA Division of Behavioral Health and Recovery describing the experiences of recipients of treatment funded by the Criminal Justice Treatment Account (CJTA). The CJTA pays for substance use disorder treatment and recovery support services for offenders with substance abuse problems.

These measures were produced by the DSHS Research and Data Analysis Division in collaboration with:

- HCA Division of Behavioral Health and Recovery
- Washington State Adult Drug Courts

In 2018, twenty-seven counties in Washington state offered Adult Drug Courts including:

- Benton
- Clallam
- Clark
- Cowlitz
- Ferry
- Franklin
- Grays Harbor
- Island
- Jefferson
- King
- Kitsap
- Kittitas
- Klickitat
- Lewis
- Mason
- Okanogan
- Pacific
- Pierce
- Skagit
- Skamania
- Snohomish
- Spokane
- Thurston
- Walla Walla
- Whatcom
- Whitman
- Yakima





PIERCE County

Drug Court Participants: Recidivism and Key Outcome Measures

NOVEMBER 2018

CONTENTS

▶▶▶ **At a Glance**

▶▶▶ **New Enrollment**

Supporting Tables: New Enrollment

▶▶▶ **Recidivism at 18-Months and Average Prior Convictions**

Supporting Tables: Recidivism at 18-Months and Prior Convictions

▶▶▶ **Recidivism at 36-Months and Average Prior Convictions**

Supporting Tables: Recidivism at 36-Months and Prior Convictions

▶▶▶ **Substance Use Disorder Treatment Participation**

Supporting Tables: Substance Use Disorder Treatment

▶▶▶ **Employment**

Supporting Tables: Employment

▶▶▶ **Medicaid Enrollment**

Supporting Tables: Medicaid Enrollment

▶▶▶ **Technical Notes**



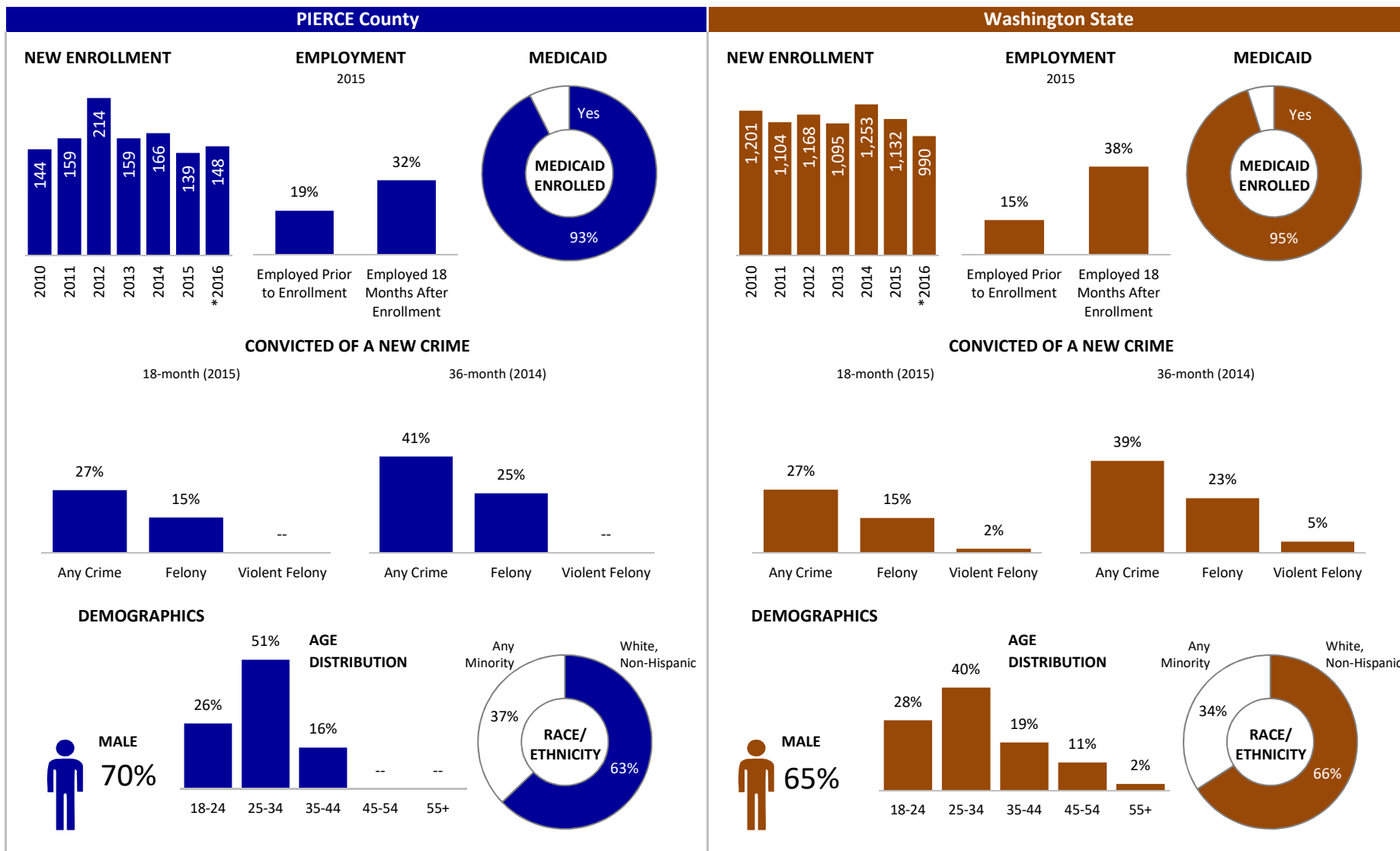
PIERCE County

Drug Court Participants: Recidivism and Key Outcome Measures

[Back to Contents](#)

NOVEMBER 2018

AT A GLANCE | 2016



*Incomplete due to changes in reporting systems resulting from the integration of behavioral and physical health care services. See technical notes for details.

--Cells representing fewer than eleven individuals were suppressed to protect client confidentiality.



PIERCE County

Drug Court New Enrollment

New Enrollment

LEGEND

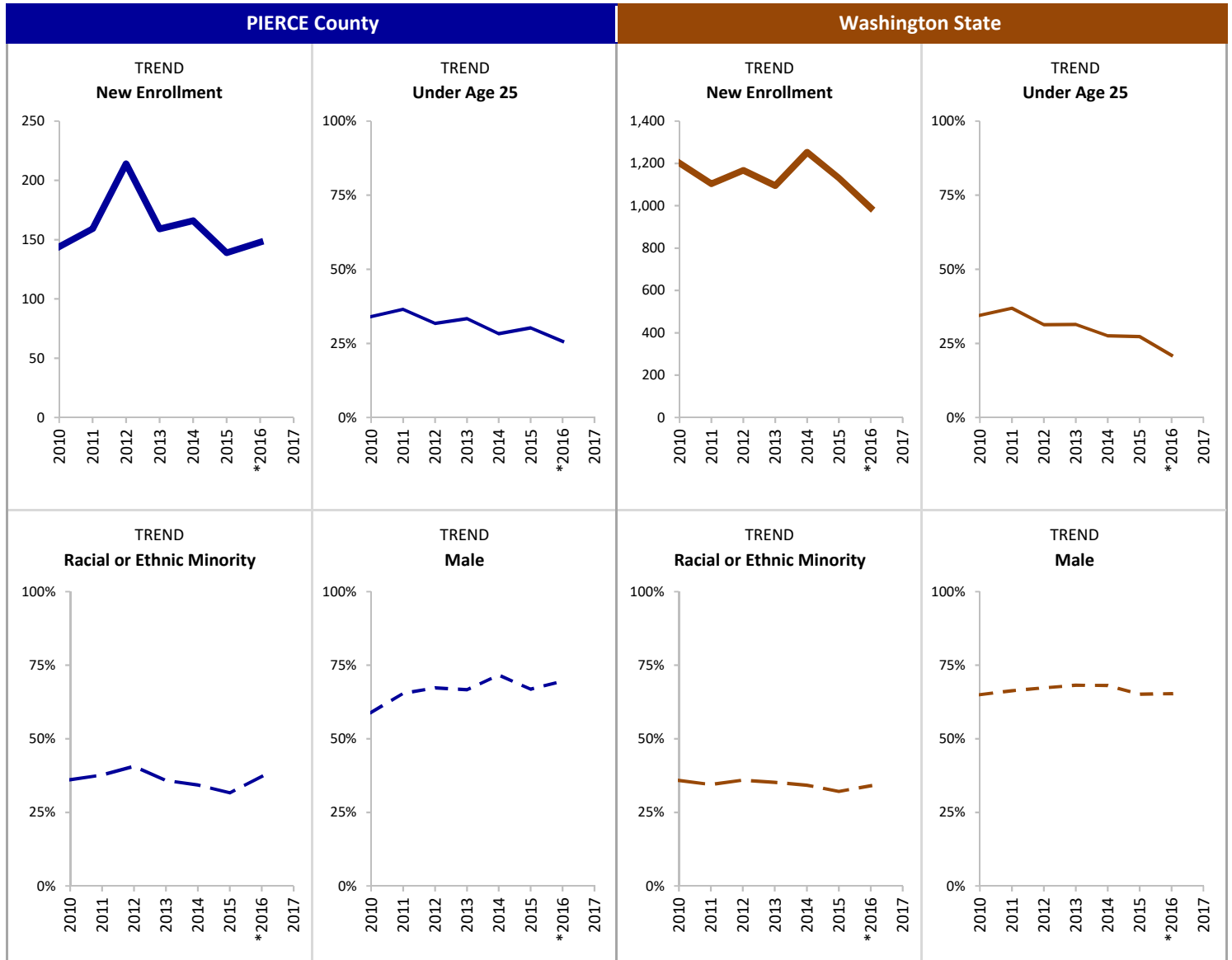
- New Enrollment
- Under Age 25
- Racial or Ethnic Minority
- - - Male

INDICATOR

New enrollment includes only new drug court participants who started substance use disorder treatment.

SOURCE & POPULATION

DSHS Integrated Client Databases. New drug Court participants who started substance use disorder treatment.



*Incomplete due to changes in reporting systems resulting from the integration of behavioral and physical health care services. See technical notes for details.

SUPPORTING TABLES | **New Enrollment**

CALENDAR YEAR	PIERCE County								Washington State							
	2010	2011	2012	2013	2014	2015	*2016	2017	2010	2011	2012	2013	2014	2015	*2016	2017
Total New Enrollment	144	159	214	159	166	139	148		1,201	1,104	1,168	1,095	1,253	1,132	990	
New Enrolled Population by Age																
18-24	34%	36%	32%	33%	28%	30%	26%		34%	37%	31%	31%	28%	27%	21%	
Total Age 18-24	49	58	68	53	47	42	38		414	407	366	344	345	309	208	
25-34	40%	35%	31%	35%	40%	47%	51%		35%	34%	38%	38%	40%	45%	47%	
Total Age 25 - 34	58	56	66	55	67	65	75		425	380	438	415	505	510	465	
35-44	15%	19%	20%	20%	19%	12%	16%		19%	16%	17%	17%	19%	18%	21%	
Total Age 35-44	22	30	42	32	31	17	24		224	182	199	188	235	200	206	
45-54	9%	8%	14%	8%	10%	--	--		10%	11%	11%	11%	11%	7%	9%	
Total Age 45-54	13	13	31	13	16				118	119	132	115	137	80	89	
55+	--	--	--	--	--	--	--		2%	1%	3%	3%	2%	3%	2%	
Total Age 55 and Older									20	16	33	33	31	33	22	
New Enrolled Pop. by Race-Ethnicity																
American Native	9%	9%	11%	8%	8%	--	11%		13%	10%	11%	11%	11%	11%	12%	
Total American Native	13	15	23	12	13		16		151	107	134	125	139	129	120	
Asian	--	8%	9%	7%	--	--	--		4%	5%	5%	5%	6%	5%	5%	
Total Asian		12	19	11					45	50	57	52	72	56	45	
African American	20%	12%	19%	18%	19%	14%	20%		15%	13%	15%	14%	12%	12%	12%	
Total African American	29	19	41	29	32	20	29		178	149	178	152	146	139	122	
Hawaiian/PI	--	9%	6%	--	--	--	--		2%	3%	3%	3%	3%	3%	3%	
Total Hawaiian/PI		14	13						22	38	33	35	38	29	31	
Hispanic	--	10%	7%	--	--	--	9%		9%	10%	9%	8%	8%	8%	10%	
Total Hispanic		16	14				14		109	106	102	93	104	87	97	
White Non-Hispanic	64%	62%	59%	64%	66%	68%	63%		64%	65%	64%	65%	66%	68%	66%	
Total White Non-Hispanic	92	99	127	102	109	95	93		767	721	748	708	824	768	652	
Any Minority	36%	38%	41%	36%	34%	32%	37%		36%	35%	36%	35%	34%	32%	34%	
Total Any Minority	52	60	87	57	57	44	55		431	381	420	386	429	364	337	
New Enrolled Population by Gender																
Female	41%	35%	33%	33%	28%	33%	30%		35%	34%	33%	32%	32%	35%	35%	
Total Female	59	55	70	53	47	46	45		420	372	382	348	399	394	343	
Male	59%	65%	67%	67%	72%	67%	70%		65%	66%	67%	68%	68%	65%	65%	
Total Male	85	104	144	106	119	93	103		781	732	786	747	854	738	647	

*Incomplete due to changes in reporting systems resulting from the integration of behavioral and physical health care services. See technical notes for details

--Cells representing fewer than eleven individuals were suppressed to protect client confidentiality.



PIERCE County

Recidivism at 18-Months: Percent Convicted of a New Offense and Average Prior Convictions

NOVEMBER 2018

18-Month Recidivism and Prior Convictions

LEGEND

New Conviction: Type of Offense

- Any Crime
- Felony

Prior Convictions

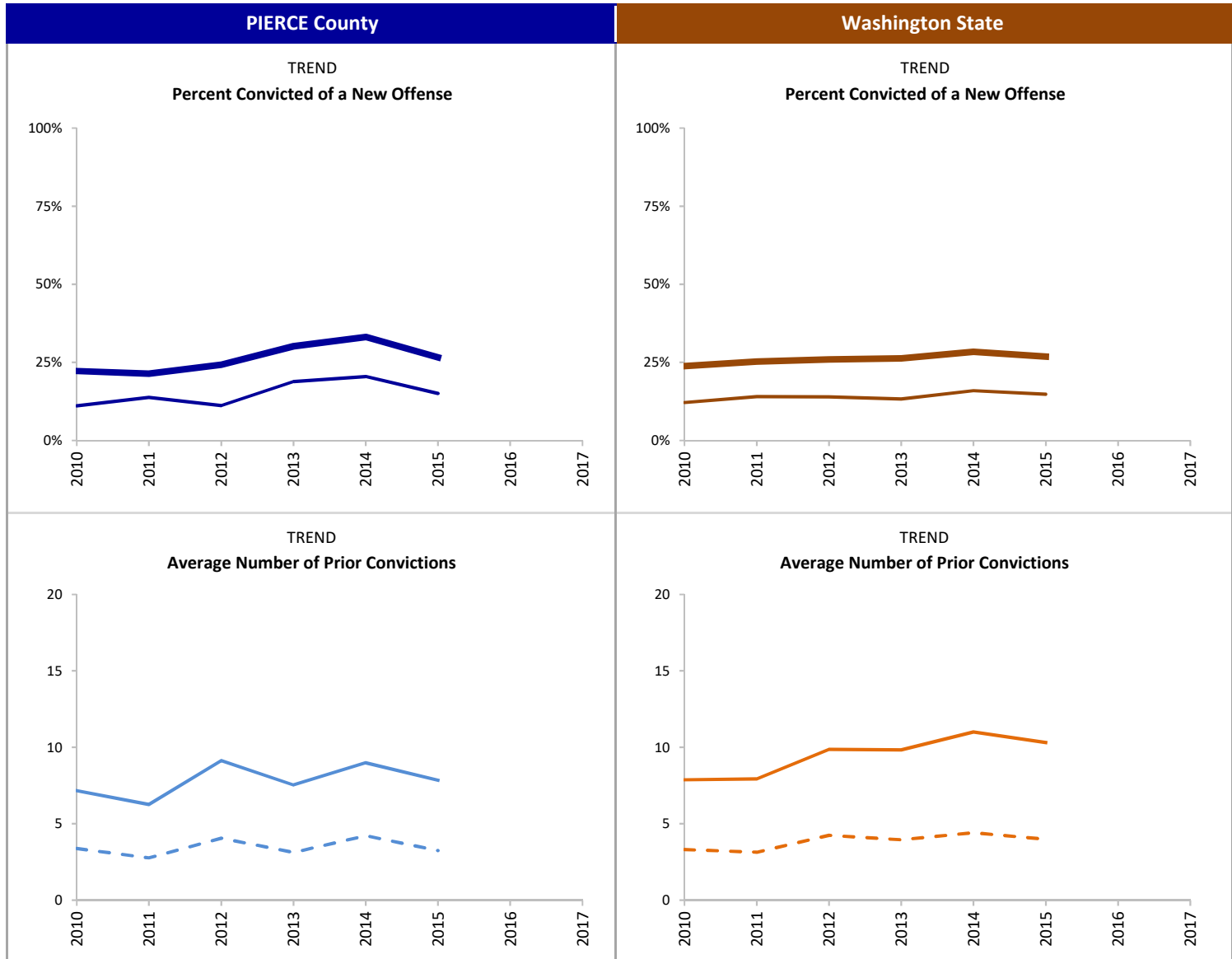
- Any Prior
- - - Felony Prior

INDICATOR

Percent of drug court participants convicted of a new offense, committed within 18-months after starting substance use disorder treatment.
Average number of prior convictions is based on a count of each charge that resulted in a conviction prior to starting treatment.

SOURCE & POPULATION

DSHS Integrated Client Databases. Drug Court participants who started substance use disorder treatment.



SUPPORTING TABLES | 18-Month Recidivism and Prior Convictions

CALENDAR YEAR	PIERCE County								Washington State							
	2010	2011	2012	2013	2014	2015	2016	2017	2010	2011	2012	2013	2014	2015	2016	2017
Total New Enrollment	144	159	214	159	166	139			1,201	1,104	1,168	1,095	1,253	1,132		
NEW Conviction (18-Months)																
Any Crime	22%	21%	24%	30%	33%	27%			24%	25%	26%	26%	28%	27%		
Total with Any Crime	32	34	52	48	55	37			286	279	303	288	356	304		
Felony	11%	14%	11%	19%	20%	15%			12%	14%	14%	13%	16%	15%		
Total with a Felony	16	22	24	30	34	21			146	155	163	146	200	168		
Violent Felony	--	--	--	--	--	--			2%	2%	3%	2%	3%	2%		
Total with a Violent Felony									21	21	33	19	37	21		
Average Number PRIOR Convictions																
Any Crime	7.2	6.3	9.1	7.5	9.0	7.9			7.9	7.9	9.9	9.8	11.0	10.3		
Total with Any Crime	131	142	197	146	155	128			1,100	1,026	1,085	1,040	1,186	1,087		
Felony	3.4	2.8	4.1	3.1	4.2	3.3			3.3	3.1	4.2	3.9	4.4	4.0		
Total with Any Felony	108	106	158	122	130	105			889	809	922	865	1,001	907		
Violent Felony	0.2	0.2	0.2	0.2	0.2	0.3			0.1	0.1	0.2	0.2	0.2	0.3		
Total with a Violent Felony	19	23	31	21	23	24			120	131	185	178	213	193		
Non-Violent Felony	3.1	2.6	3.8	3.0	4.0	3.0			3.2	3.0	4.0	3.7	4.2	3.7		
Total with a Non-Violent Felony	108	106	158	122	130	105			889	809	922	865	1,001	907		
Misdemeanor	3.8	3.5	5.1	4.4	4.8	4.6			4.6	4.8	5.6	5.9	6.6	6.3		
Total with a Misdemeanor	118	130	188	133	139	121			1,011	942	1,018	977	1,124	1,030		

--Cells representing fewer than eleven individuals were suppressed to protect client confidentiality.



PIERCE County

Recidivism at 36-Months: Percent Convicted of a New Offense and Average Prior Convictions

NOVEMBER 2018

36-Month Recidivism and Prior Convictions

LEGEND

New Conviction: Type of Offense

- █ Any Crime
- █ Felony

Prior Convictions

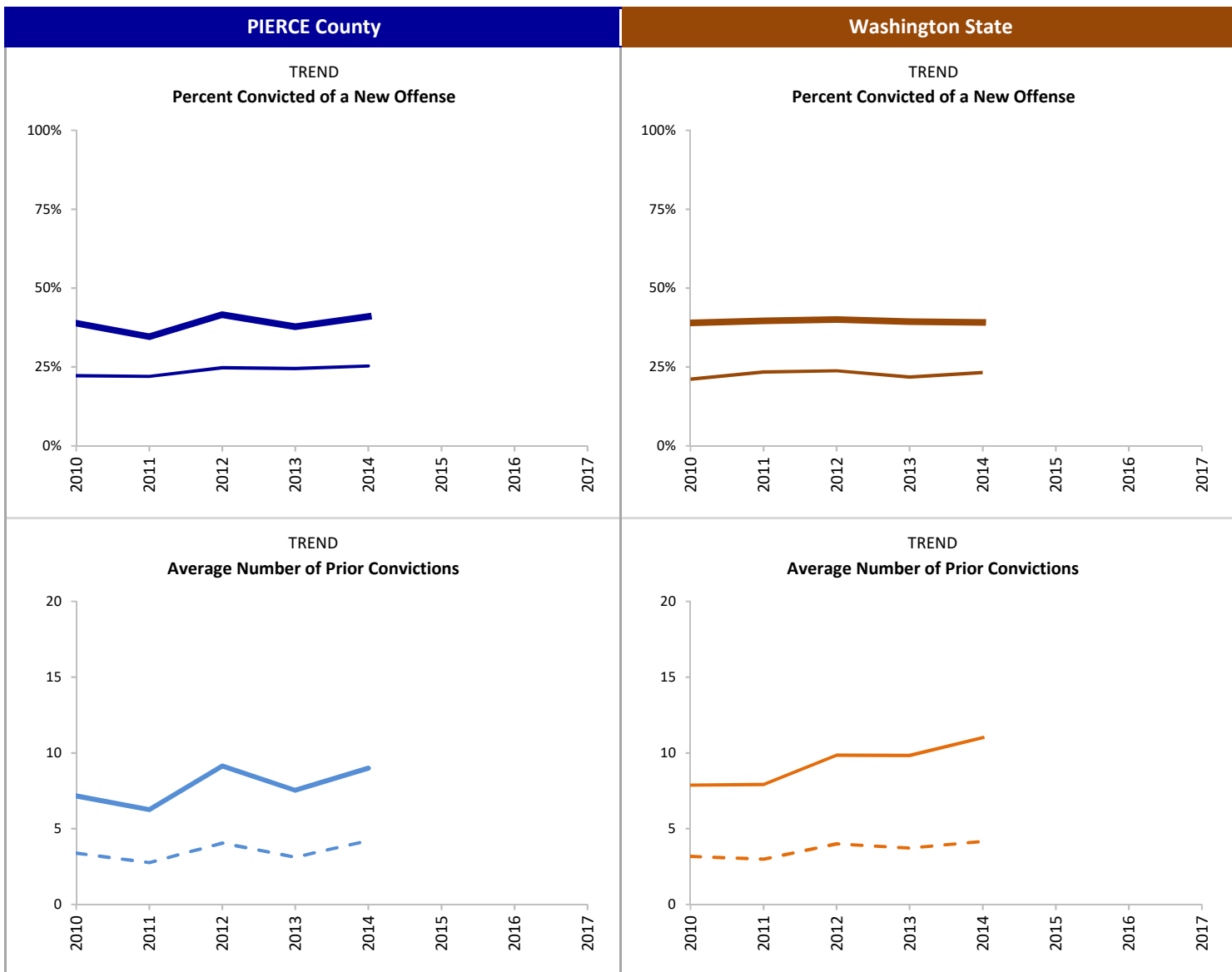
- Any Prior
- - - Felony Prior

INDICATOR

Percent of drug court participants convicted of a new offense, committed within 36-months after starting substance use disorder treatment. Average number of prior convictions is based on a count of each charge that resulted in a conviction prior to starting treatment.

SOURCE & POPULATION

DSHS Integrated Client Databases. Drug Court participants who started substance use disorder treatment.



SUPPORTING TABLES | **36-Month Recidivism and Prior Convictions**

CALENDAR YEAR	PIERCE County							Washington State								
	2010	2011	2012	2013	2014	2015	2016	2017	2010	2011	2012	2013	2014	2015	2016	2017
Total New Enrollment	144	159	214	159	166				1,201	1,104	1,168	1,095	1,253			
NEW Conviction (36-Months)																
Any Crime	39%	35%	42%	38%	41%				39%	40%	40%	39%	39%			
Total with Any Crime	56	55	89	60	68				468	437	468	431	490			
Felony	22%	22%	25%	25%	25%				21%	23%	24%	22%	23%			
Total with a Felony	32	35	53	39	42				254	259	278	239	291			
Violent Felony	--	--	--	--	--				4%	4%	6%	4%	5%			
Total with a Violent Felony									46	46	66	42	60			
Average Number PRIOR Convictions																
Any Crime	7.2	6.3	9.1	7.5	9.0				7.9	7.9	9.9	9.8	11.0			
Total with Any Crime	131	142	197	146	155				1,100	1,026	1,085	1,040	1,186			
Felony	3.4	2.8	4.1	3.1	4.2				3.3	3.1	4.2	3.9	4.4			
Total with Any Felony	108	106	158	122	130				889	809	922	865	1,001			
Violent Felony	0.2	0.2	0.2	0.2	0.2				0.1	0.1	0.2	0.2	0.2			
Total with a Violent Felony	19	23	31	21	23				120	131	185	178	213			
Non-Violent Felony	3.1	2.6	3.8	3.0	4.0				3.2	3.0	4.0	3.7	4.2			
Total with a Non-Violent Felony	108	106	158	122	130				889	809	922	865	1,001			
Misdemeanor	3.8	3.5	5.1	4.4	4.8				4.6	4.8	5.6	5.9	6.6			
Total with a Misdemeanor	118	130	188	133	139				1,011	942	1,018	977	1,124			



PIERCE County

Drug Court Substance Use Disorder Treatment Participation

NOVEMBER 2018

Substance Use Disorder Treatment

LEGEND

Engagement and Retention

- █ Engaged in Treatment
- █ Retained in Treatment

Primary Substance

- █ Heroin/Other Opioids
- █ Methamphetamine

Average Days of SUD Tx

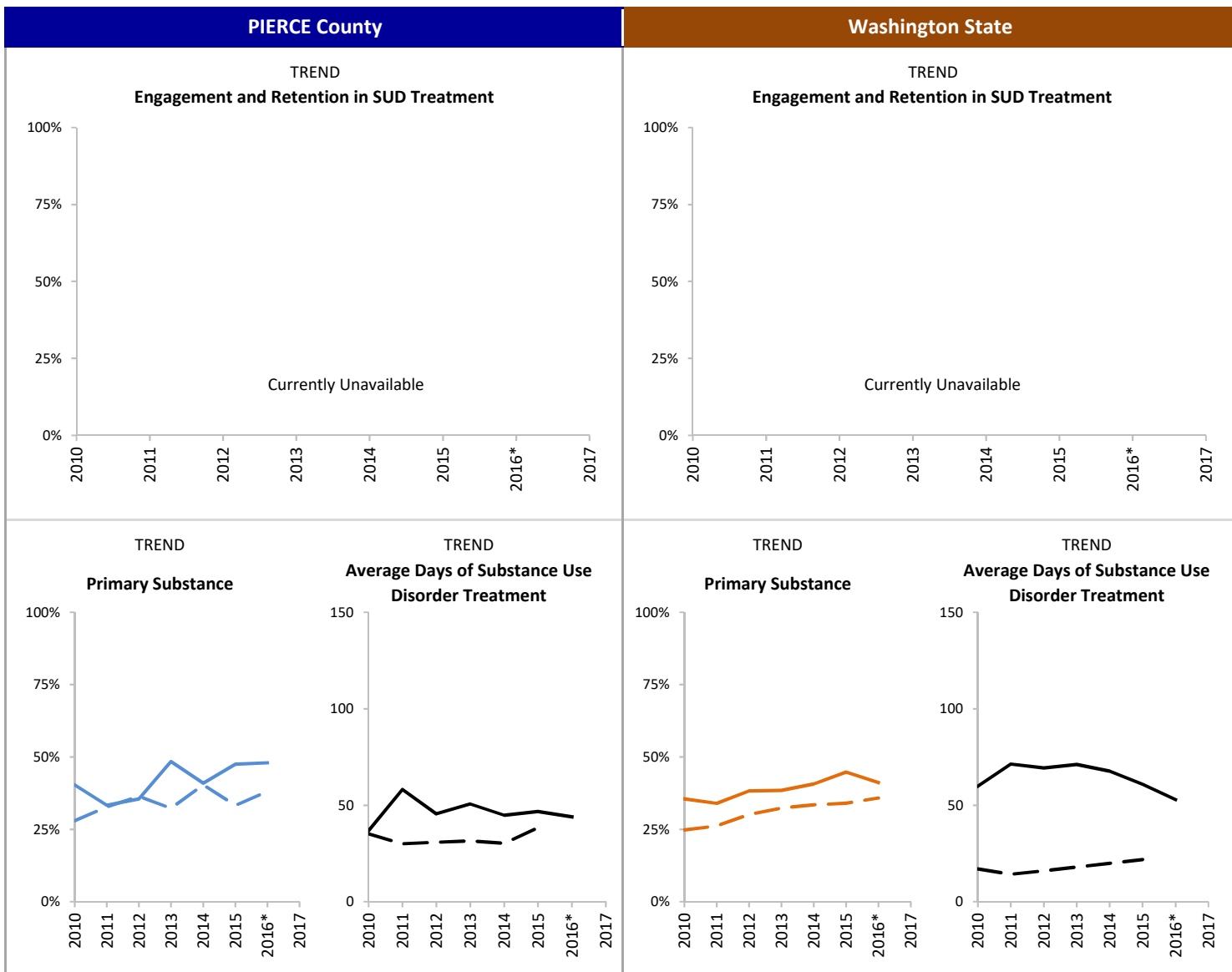
- █ Outpatient
- █ Inpatient

INDICATOR

Percent of drug court participants with Engagement and Retention in substance use disorder treatment. Engagement is defined as initiating treatment and receiving two additional services within 30 days after initiation. Retention is defined as receiving treatment services at least once per month for the first 90 days after initiation (see Technical Notes for full definition).

SOURCE & POPULATION

DSHS Integrated Client Databases. Drug Court participants who started substance use disorder treatment.



*Incomplete due to changes in reporting systems resulting from the integration of behavioral and physical health care services. See technical notes for details.

SUPPORTING TABLES | Substance Use Disorder Treatment

CALENDAR YEAR	PIERCE County							Washington State								
	2010	2011	2012	2013	2014	2015	2016*	2017	2010	2011	2012	2013	2014	2015	2016*	2017
Total New Enrollment	144	159	214	159	166	139	148		1,201	1,104	1,168	1,095	1,253	1,132	990	
Engagement and Retention																
Engagement																
Total Engaged in Treatment	Currently Unavailable							Currently Unavailable								
Retention																
Total Retained in Treatment																
Primary Substance																
Heroin and Other Opioids	40%	33%	36%	48%	41%	47%	48%		35%	34%	38%	38%	41%	45%	41%	
Total Heroin and Other Opioids	58	53	76	77	68	66	71		426	375	447	421	510	507	407	
Methamphetamine	28%	33%	36%	32%	40%	33%	38%		25%	26%	30%	32%	33%	34%	36%	
Total Methamphetamine	40	52	78	51	67	46	56		296	287	350	352	416	379	318	
Cannabis	17%	16%	13%	11%	7%	10%	--		14%	19%	14%	13%	10%	9%	8%	
Total Cannabis	25	26	28	17	11	14			163	210	160	140	122	97	68	
Alcohol	--	--	--	--	--	--	--		13%	11%	8%	9%	8%	7%	6%	
Total Alcohol									157	122	96	93	95	75	54	
Type of SUD Treatment																
Outpatient Treatment	97%	99%	98%	97%	96%	99%	97%		95%	95%	95%	95%	92%	93%	93%	
Number in Outpatient Tx	140	157	209	155	160	138	144		1,141	1,053	1,107	1,035	1,154	1,057	916	
Average Days in Outpatient Tx	36.8	58.2	45.6	50.7	44.8	46.7	44.0		60.0	71.3	69.3	71.2	67.6	60.9	52.9	
Inpatient Treatment	41%	42%	44%	42%	42%	50%	N/A		28%	28%	30%	33%	35%	40%	N/A	
Number in Inpatient Tx	59	66	94	66	70	70			332	310	349	365	433	453		
Average Days in Inpatient Tx	35.1	30.0	30.8	31.5	30.2	38.4			17.0	14.2	16.0	17.9	19.9	21.8		
Medication Assisted Treatment	--	--	--	--	--	12%	30%		7%	6%	8%	7%	11%	15%	21%	
Number in Medication Assisted Tx						16	45		82	68	91	75	144	167	208	

*Incomplete due to changes in reporting systems resulting from the integration of behavioral and physical health care services. See technical notes for details

--Cells representing fewer than eleven individuals were suppressed to protect client confidentiality.



PIERCE County

Drug Court Employment and Earnings

Employment and Earnings

LEGEND

Employment

- Baseline
- - 18-Months Post

Earnings

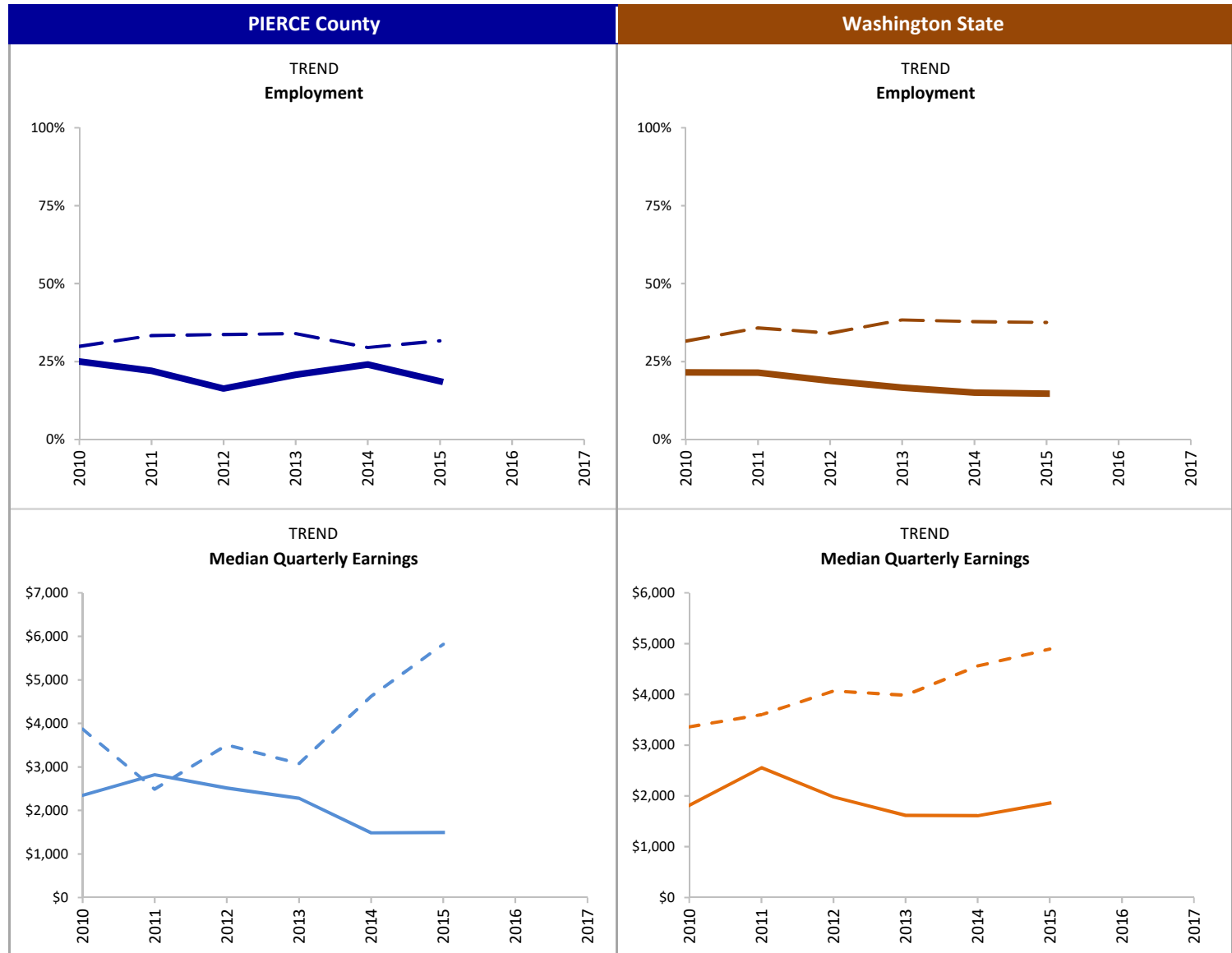
- Baseline
- - 18-Months Post

INDICATOR

Percent of drug court participants employed part-time or full-time at baseline and 18-months after starting substance use disorder treatment. Baseline includes individuals with any employment in the quarter prior to starting treatment. Individuals were considered employed 18-months post if they had any earnings in the 6th quarter (18-months) after starting treatment. Median quarterly earnings is calculated only for those with non-zero earnings in the quarter.

SOURCE & POPULATION

DSHS Integrated Client Databases. Drug Court participants who started substance use disorder treatment.



*Incomplete due to changes in reporting systems resulting from the integration of behavioral and physical health care services. See technical notes for details.

--Data was suppressed.

SUPPORTING TABLES | **Employment**

CALENDAR YEAR	PIERCE County							Washington State								
	2010	2011	2012	2013	2014	2015	2016	2017	2010	2011	2012	2013	2014	2015	2016	2017
Total New Enrollment	144	159	214	159	166	139			1,201	1,104	1,168	1,095	1,253	1,132		
Employed Prior to Enrollment																
Percent Employed Baseline	25%	22%	16%	21%	24%	19%			22%	21%	19%	17%	15%	15%		
Number Employed at Baseline	36	35	35	33	40	26			259	237	220	182	188	167		
Median Qtrly Earnings Baseline	\$ 2,347	\$ 2,819	\$ 2,514	\$ 2,280	\$ 1,484	\$ 1,490			\$ 1,815	\$ 2,555	\$ 1,980	\$ 1,619	\$ 1,610	\$ 1,860		
Median Qtrly Hours Worked Baseline	150	227	208	201	117	128			164	208	166	141	130	153		
Employed 18 Months After Enrollment																
Percent Employed 18-Months Post	30%	33%	34%	34%	30%	32%			32%	36%	34%	38%	38%	38%		
Number Employed 18-Months Post	43	53	72	54	49	44			379	395	398	420	474	425		
Median Qtrly Earnings 18-Mos. Post	\$ 3,870	\$ 2,488	\$ 3,504	\$ 3,078	\$ 4,622	\$ 5,817			\$ 3,360	\$ 3,601	\$ 4,067	\$ 3,984	\$ 4,558	\$ 4,893		
Median Qtrly Hours 18-Mos. Post	322	256	268	309	390	392			309	320	359	328	360	357		

--Cells representing fewer than eleven individuals were suppressed to protect client confidentiality.



PIERCE County

Drug Court Medicaid Enrollment

Medicaid Enrollment

LEGEND

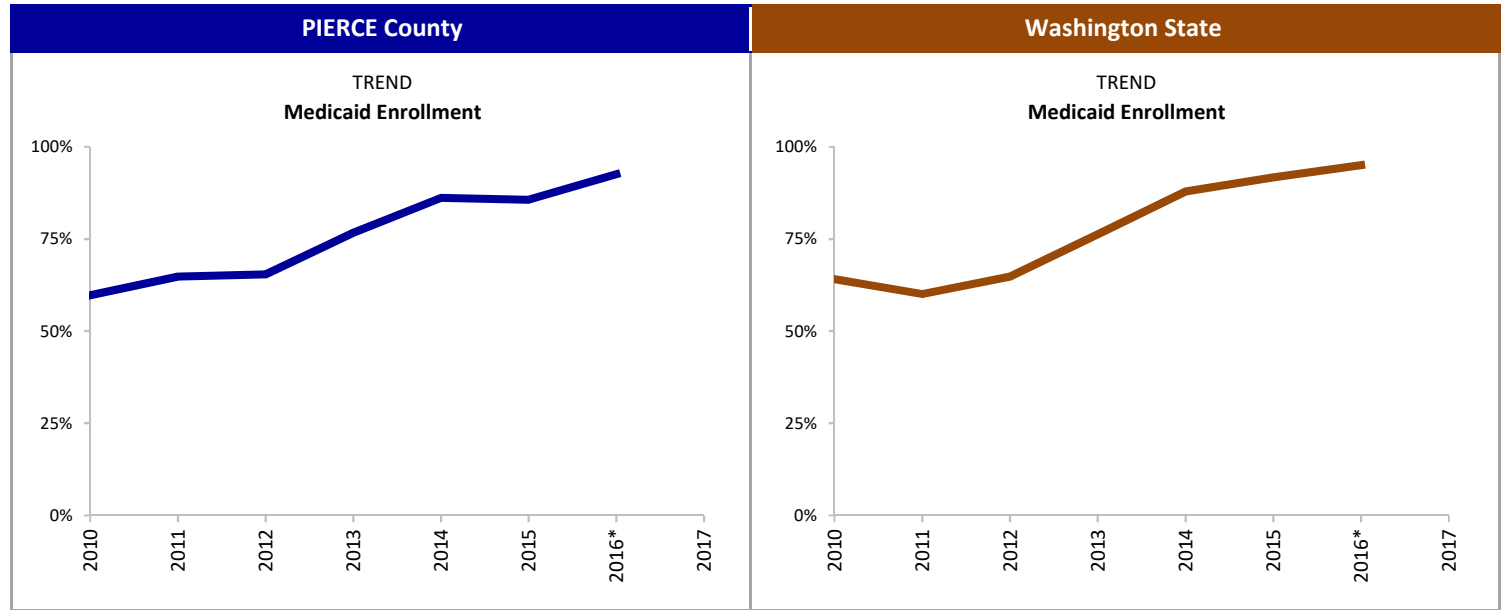
— Percent Enrolled in Medicaid

INDICATOR

Percent of drug court participants enrolled in Medicaid at any point during the 12-months after starting substance use disorder treatment.

SOURCE & POPULATION

DSHS Integrated Client Databases. Drug Court participants who started substance use disorder treatment.



*Incomplete due to changes in reporting systems resulting from the integration of behavioral and physical health care services. See technical notes for details.

SUPPORTING TABLES | Medicaid Enrollment

CALENDAR YEAR	PIERCE County								Washington State							
	2010	2011	2012	2013	2014	2015	2016*	2017	2010	2011	2012	2013	2014	2015	2016*	2017
Total New Enrollment	144	159	214	159	166	139	148		1,201	1,104	1,168	1,095	1,253	1,132	990	
Medicaid Enrollment																
Percent Enrolled in Medicaid	60%	65%	65%	77%	86%	86%	93%		64%	60%	65%	76%	88%	92%	95%	
Number Enrolled in Medicaid	86	103	140	122	143	119	137		770	663	757	835	1,101	1,038	941	



PIERCE County

Drug Court Participants: Recidivism and Key Outcome Measures

TECHNICAL NOTES

POPULATION

- **Total New Enrollment:** Includes all new drug court participants who started substance use disorder treatment within 12-months of their drug court start date. The dashboard indicators are based on the enrolled population. Blank cells indicate data were missing or suppressed due to fewer than 10 enrolled participants.
- The decrease in new enrollment in 2016 is due to underreporting of treatment records during the implementation of a new behavioral health data system and the integration of behavioral and physical health care. It should not be interpreted as a decrease in the number of individuals participating in drug courts. Future updates will address this shortcoming with available data.

INDICATORS

- **Recidivism:** Defined as a new conviction for an offense that occurred 18- or 36-months after the month the participant started substance use disorder treatment. The conviction may occur anytime after the offense date. The average number of prior convictions is based on a count of all charges that resulted in a conviction for offenses that occurred prior to the treatment start date. Conviction data were obtained from the Administrative Office of the Courts.
- **Substance Use Disorder Treatment:** The Washington Circle Measure of Engagement is defined as initiating substance use disorder treatment and receiving two additional services within 30 days of initiation. Retention is an additional measure used in Washington State which is defined as receiving treatment services at least once per month for the first 90 days after initiation, or completing treatment and being discharged within 90 days, or transferring to a residential treatment facility within 90 days. Engagement and Retention measures are calculated only for those whose first treatment episode was an outpatient service. Data from the Treatment and Assessment Report Generation Tool (TARGET) and the Behavioral Health Data System (BHDS) were used to identify substance use disorder treatment, primary substance and average days of treatment. Treatment shown is not necessarily the treatment approved by the court. Due to changes in the behavioral health data system, the engagement and retention measures are not currently available.
- **Employment:** Quarterly employment and earnings data were obtained from the Washington State Employment Security Department. Median quarterly earnings and hours worked is reported only for individuals with non-zero earnings during the quarter.
- **Medicaid Enrollment:** Obtained from eligibility codes available in the DSHS Integrated Client Database (ICDB).

DATA SOURCES

- DSHS Integrated Client Database
- Washington State Drug Courts
- Drug Court Case Management System (DCCM)
- Administrative Office of the Courts Adult Drug Court Docket Codes

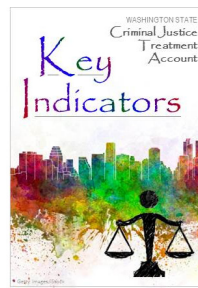
MISSING DATA

- Klickitat, Pacific, Skagit and Whitman county drug court data are missing for 2016.

PIERCE County

Drug Court Participants: Recidivism and Key Outcome Measures

NOVEMBER 2018



CONTRIBUTORS

Paula Henzel, RDA • Jim Mayfield, RDA • Callie Black, RDA • Barbara E.M. Felver, RDA

<https://www.dshs.wa.gov/rda>