

## SPOKANE County

### Drug Court Participants: Recidivism and Key Outcome Measures

NOVEMBER 2018

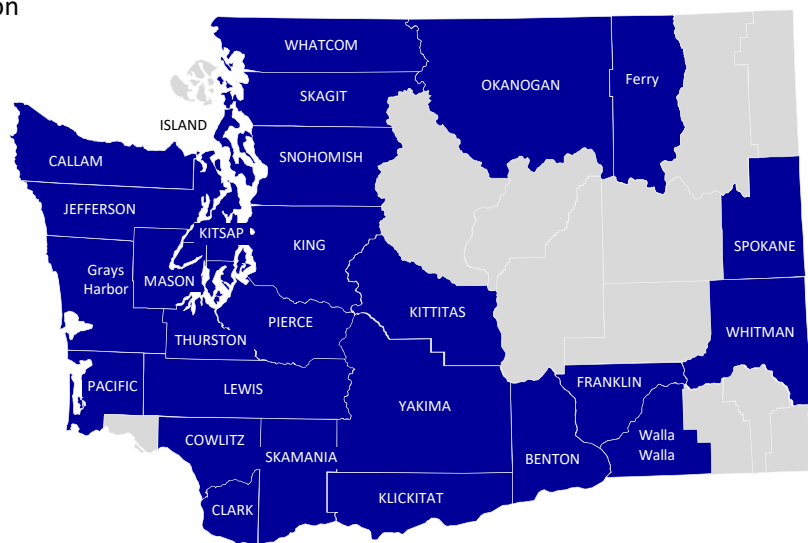
This dashboard presents indicators for monitoring recidivism and other key outcomes among offenders participating in Adult Drug Court. Drug Courts aim to reduce recidivism through judicially supervised substance use disorder treatment, mandatory periodic drug testing, community supervision, use of sanctions and other rehabilitation services. County-level and statewide trends in drug court enrollment, demographics, recidivism, substance use disorder treatment participation, employment and Medicaid coverage rates are presented for individuals admitted to drug courts. Dashboard indicators are presented only for individuals who started substance use disorder treatment. Due to recent initiatives to integrate behavioral and physical health and changes in associated reporting systems (including the elimination of TARGET), new enrollments for 2016 may be underreported and should not be interpreted as a decrease in the number of individuals participating in drug courts. Because Clark and Skamania counties were "early adopters" of integrated behavioral health and physical health care, 2016 dashboard indicators for these two counties were particularly impacted by these reporting changes. This is part of a series of analyses for the HCA Division of Behavioral Health and Recovery describing the experiences of recipients of treatment funded by the Criminal Justice Treatment Account (CJTA). The CJTA pays for substance use disorder treatment and recovery support services for offenders with substance abuse problems.

These measures were produced by the DSHS Research and Data Analysis Division in collaboration with:

- HCA Division of Behavioral Health and Recovery
- Washington State Adult Drug Courts

In 2018, twenty-seven counties in Washington state offered Adult Drug Courts including:

- Benton
- Clallam
- Clark
- Cowlitz
- Ferry
- Franklin
- Grays Harbor
- Island
- Jefferson
- King
- Kitsap
- Kittitas
- Klickitat
- Lewis
- Mason
- Okanogan
- Pacific
- Pierce
- Skagit
- Skamania
- Snohomish
- Spokane
- Thurston
- Walla Walla
- Whatcom
- Whitman
- Yakima





# SPOKANE County

## Drug Court Participants: Recidivism and Key Outcome Measures

NOVEMBER 2018

### CONTENTS

▶▶▶ **At a Glance**

▶▶▶ **New Enrollment**

*Supporting Tables: New Enrollment*

▶▶▶ **Recidivism at 18-Months and Average Prior Convictions**

*Supporting Tables: Recidivism at 18-Months and Prior Convictions*

▶▶▶ **Recidivism at 36-Months and Average Prior Convictions**

*Supporting Tables: Recidivism at 36-Months and Prior Convictions*

▶▶▶ **Substance Use Disorder Treatment Participation**

*Supporting Tables: Substance Use Disorder Treatment*

▶▶▶ **Employment**

*Supporting Tables: Employment*

▶▶▶ **Medicaid Enrollment**

*Supporting Tables: Medicaid Enrollment*

▶▶▶ **Technical Notes**



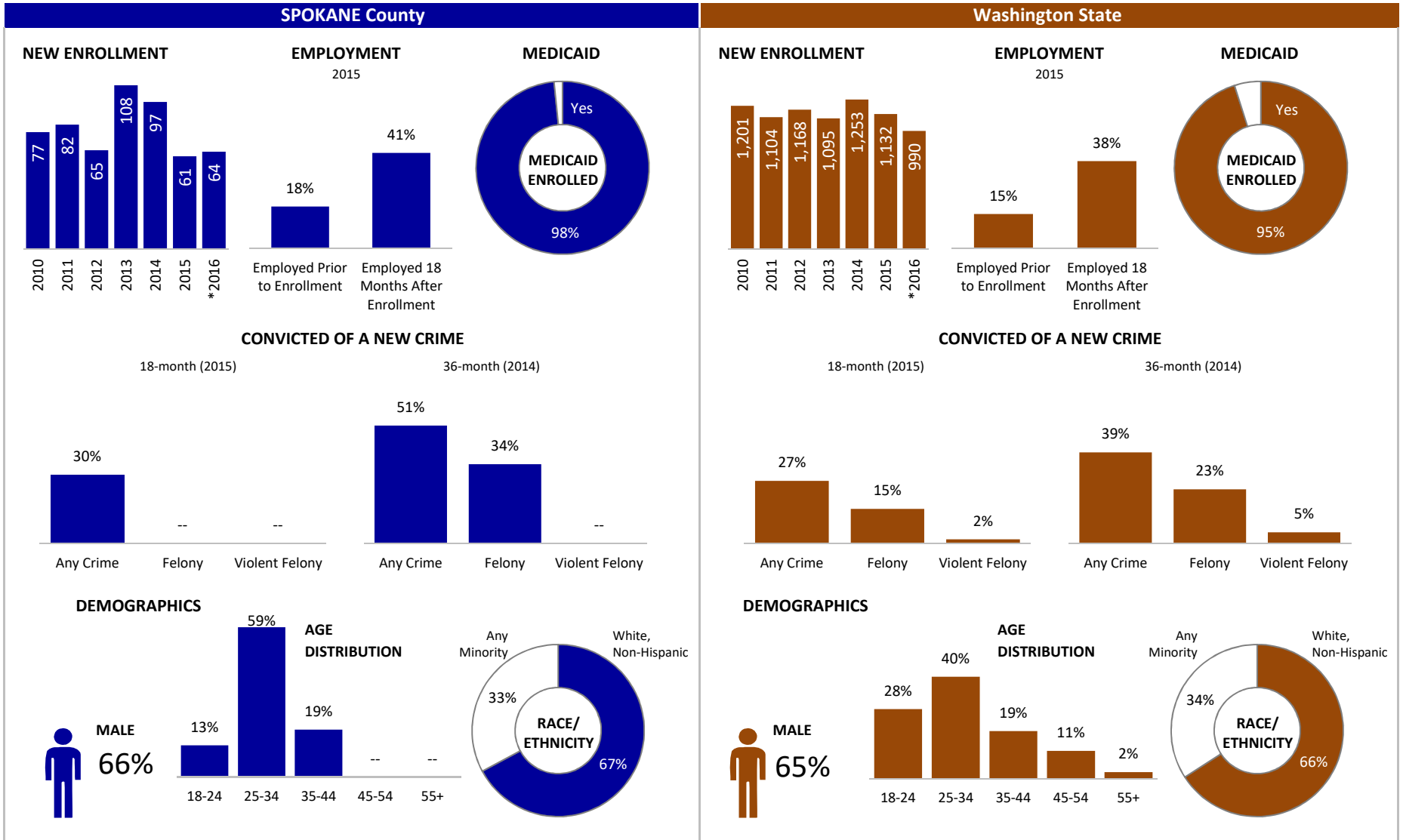
# SPOKANE County

## Drug Court Participants: Recidivism and Key Outcome Measures

[Back to Contents](#)

NOVEMBER 2018

### AT A GLANCE | 2016



\*Incomplete due to changes in reporting systems resulting from the integration of behavioral and physical health care services. See technical notes for details.

--Cells representing fewer than eleven individuals were suppressed to protect client confidentiality.



# SPOKANE County

## Drug Court New Enrollment

### New Enrollment

**LEGEND**

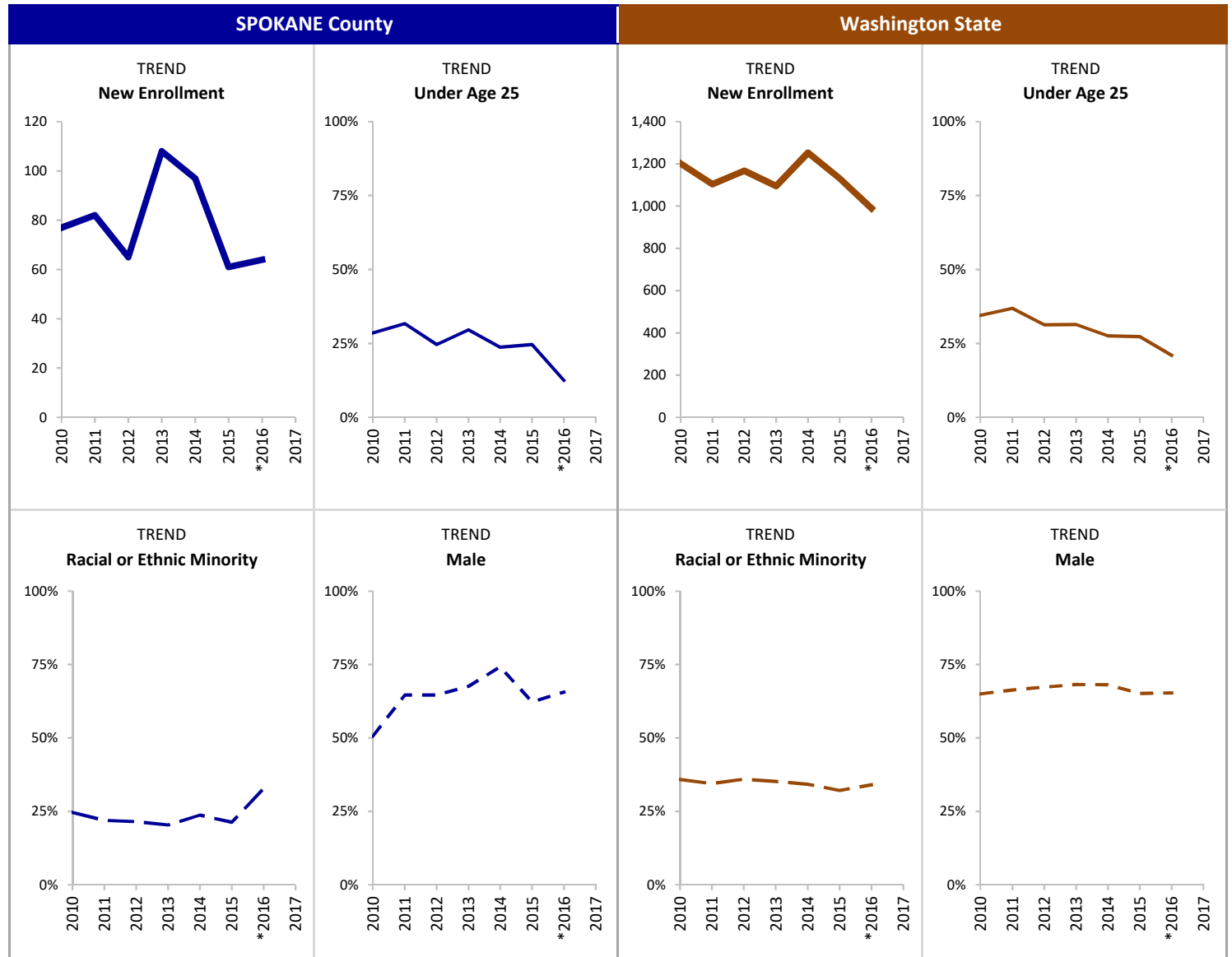
- New Enrollment
- Under Age 25
- - - Racial or Ethnic Minority
- - - Male

**INDICATOR**

New enrollment includes only new drug court participants who started substance use disorder treatment.

**SOURCE & POPULATION**

DSHS Integrated Client Databases. New drug Court participants who started substance use disorder treatment.



\*Incomplete due to changes in reporting systems resulting from the integration of behavioral and physical health care services. See technical notes for details.

SUPPORTING TABLES | **New Enrollment**

CALENDAR YEAR	SPOKANE County								Washington State							
	2010	2011	2012	2013	2014	2015	*2016	2017	2010	2011	2012	2013	2014	2015	*2016	2017
<b>Total New Enrollment</b>	77	82	65	108	97	61	64		1,201	1,104	1,168	1,095	1,253	1,132	990	
<b>New Enrolled Population by Age</b>																
<b>18-24</b>	29%	32%	25%	30%	24%	25%	13%		34%	37%	31%	31%	28%	27%	21%	
Total Age 18-24	22	26	16	32	23	15	8		414	407	366	344	345	309	208	
<b>25-34</b>	42%	38%	49%	37%	43%	46%	59%		35%	34%	38%	38%	40%	45%	47%	
Total Age 25 - 34	32	31	32	40	42	28	38		425	380	438	415	505	510	465	
<b>35-44</b>	23%	18%	--	18%	19%	20%	19%		19%	16%	17%	17%	19%	18%	21%	
Total Age 35-44	18	15		19	18	12	12		224	182	199	188	235	200	206	
<b>45-54</b>	--	--	--	14%	13%	--	--		10%	11%	11%	11%	11%	7%	9%	
Total Age 45-54				15	13				118	119	132	115	137	80	89	
<b>55+</b>	--	--	--	--	--	--	--		2%	1%	3%	3%	2%	3%	2%	
Total Age 55 and Older									20	16	33	33	31	33	22	
<b>New Enrolled Pop. by Race-Ethnicity</b>																
<b>American Native</b>	--	--	--	--	12%	--	20%		13%	10%	11%	11%	11%	11%	12%	
Total American Native					12		13		151	107	134	125	139	129	120	
<b>Asian</b>	--	--	--	--	--	--	--		4%	5%	5%	5%	6%	5%	5%	
Total Asian									45	50	57	52	72	56	45	
<b>African American</b>	--	--	--	--	--	--	--		15%	13%	15%	14%	12%	12%	12%	
Total African American									178	149	178	152	146	139	122	
<b>Hawaiian/PI</b>	--	--	--	--	--	--	--		2%	3%	3%	3%	3%	3%	3%	
Total Hawaiian/PI									22	38	33	35	38	29	31	
<b>Hispanic</b>	--	--	--	--	--	--	--		9%	10%	9%	8%	8%	8%	10%	
Total Hispanic									109	106	102	93	104	87	97	
<b>White Non-Hispanic</b>	75%	77%	78%	80%	76%	79%	67%		64%	65%	64%	65%	66%	68%	66%	
Total White Non-Hispanic	58	63	51	86	74	48	43		767	721	748	708	824	768	652	
<b>Any Minority</b>	25%	22%	22%	20%	24%	21%	33%		36%	35%	36%	35%	34%	32%	34%	
Total Any Minority	19	18	14	22	23	13	21		431	381	420	386	429	364	337	
<b>New Enrolled Population by Gender</b>																
<b>Female</b>	49%	35%	35%	32%	26%	38%	34%		35%	34%	33%	32%	32%	35%	35%	
Total Female	38	29	23	35	25	23	22		420	372	382	348	399	394	343	
<b>Male</b>	51%	65%	65%	68%	74%	62%	66%		65%	66%	67%	68%	68%	65%	65%	
Total Male	39	53	42	73	72	38	42		781	732	786	747	854	738	647	

\*Incomplete due to changes in reporting systems resulting from the integration of behavioral and physical health care services. See technical notes for details

--Cells representing fewer than eleven individuals were suppressed to protect client confidentiality.



# SPOKANE County

## Recidivism at 18-Months: Percent Convicted of a New Offense and Average Prior Convictions

NOVEMBER 2018

### 18-Month Recidivism and Prior Convictions

**LEGEND**

**New Conviction: Type of Offense**

- █ Any Crime
- █ Felony

**Prior Convictions**

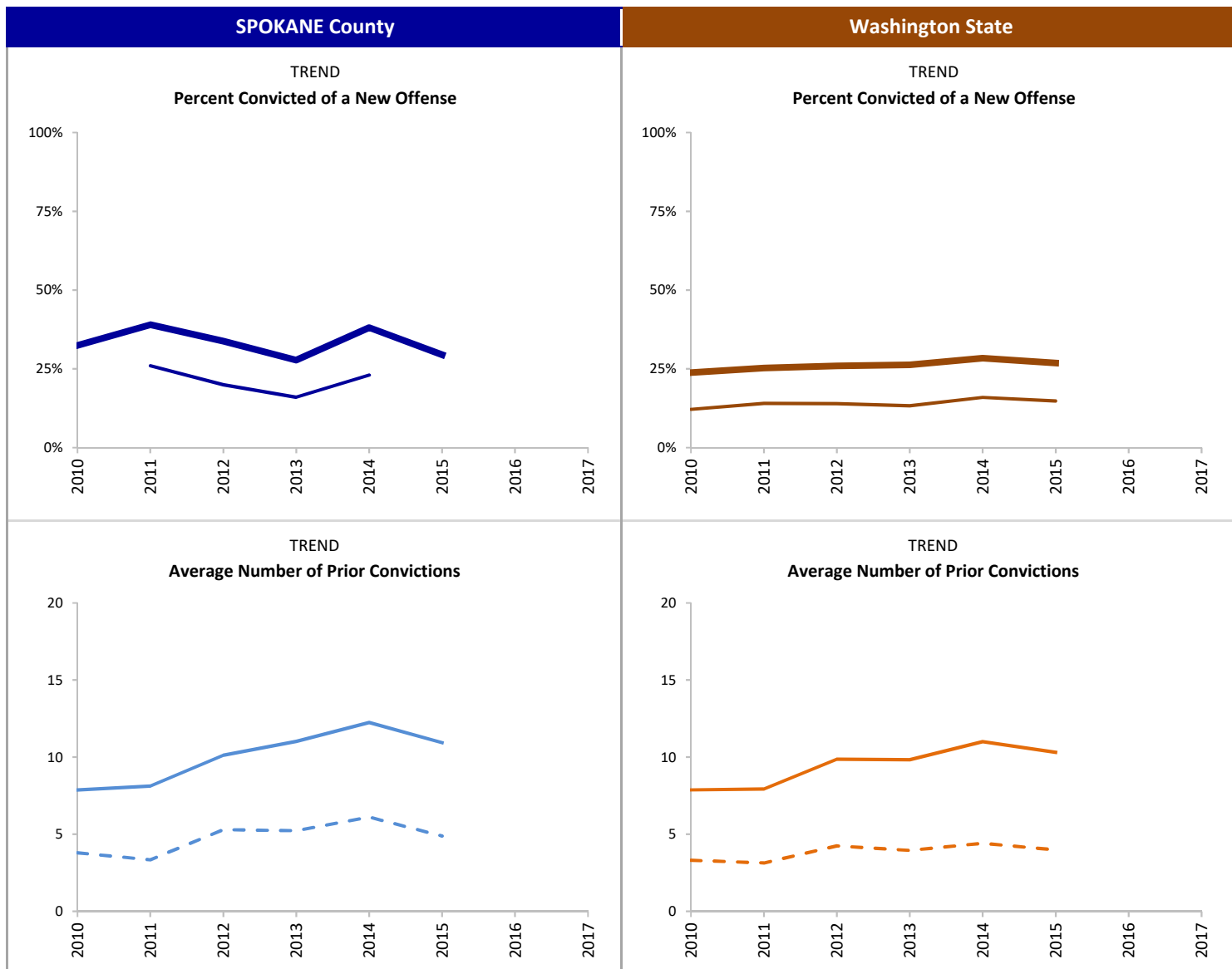
- Any Prior
- - - Felony Prior

**INDICATOR**

Percent of drug court participants convicted of a new offense, committed within 18-months after starting substance use disorder treatment. Average number of prior convictions is based on a count of each charge that resulted in a conviction prior to starting treatment.

**SOURCE & POPULATION**

DSHS Integrated Client Databases. Drug Court participants who started substance use disorder treatment.



SUPPORTING TABLES | 18-Month Recidivism and Prior Convictions

CALENDAR YEAR	SPOKANE County								Washington State							
	2010	2011	2012	2013	2014	2015	2016	2017	2010	2011	2012	2013	2014	2015	2016	2017
<b>Total New Enrollment</b>	77	82	65	108	97	61			1,201	1,104	1,168	1,095	1,253	1,132		
<b>NEW Conviction (18-Months)</b>																
<b>Any Crime</b>	32%	39%	34%	28%	38%	30%			24%	25%	26%	26%	28%	27%		
Total with Any Crime	25	32	22	30	37	18			286	279	303	288	356	304		
<b>Felony</b>	--	26%	20%	16%	23%	--			12%	14%	14%	13%	16%	15%		
Total with a Felony		21	13	17	22				146	155	163	146	200	168		
<b>Violent Felony</b>	--	--	--	--	--	--			2%	2%	3%	2%	3%	2%		
Total with a Violent Felony									21	21	33	19	37	21		
<b>Average Number PRIOR Convictions</b>																
<b>Any Crime</b>	7.9	8.1	10.1	11.0	12.2	10.9			7.9	7.9	9.9	9.8	11.0	10.3		
Total with Any Crime	72	74	59	103	93	58			1,100	1,026	1,085	1,040	1,186	1,087		
<b>Felony</b>	3.8	3.3	5.3	5.2	6.1	4.9			3.3	3.1	4.2	3.9	4.4	4.0		
Total with Any Felony	59	57	51	81	85	52			889	809	922	865	1,001	907		
<b>Violent Felony</b>	--	--	--	0.3	0.4	0.3			0.1	0.1	0.2	0.2	0.2	0.3		
Total with a Violent Felony				23	27	14			120	131	185	178	213	193		
<b>Non-Violent Felony</b>	3.7	3.2	5.1	4.9	5.7	4.5			3.2	3.0	4.0	3.7	4.2	3.7		
Total with a Non-Violent Felony	59	57	51	81	85	52			889	809	922	865	1,001	907		
<b>Misdemeanor</b>	4.1	4.8	4.8	5.8	6.1	6.0			4.6	4.8	5.6	5.9	6.6	6.3		
Total with a Misdemeanor	63	69	57	96	88	55			1,011	942	1,018	977	1,124	1,030		

--Cells representing fewer than eleven individuals were suppressed to protect client confidentiality.



# SPOKANE County

## Recidivism at 36-Months: Percent Convicted of a New Offense and Average Prior Convictions

NOVEMBER 2018

### 36-Month Recidivism and Prior Convictions

**LEGEND**

**New Conviction: Type of Offense**

- █ Any Crime
- █ Felony

**Prior Convictions**

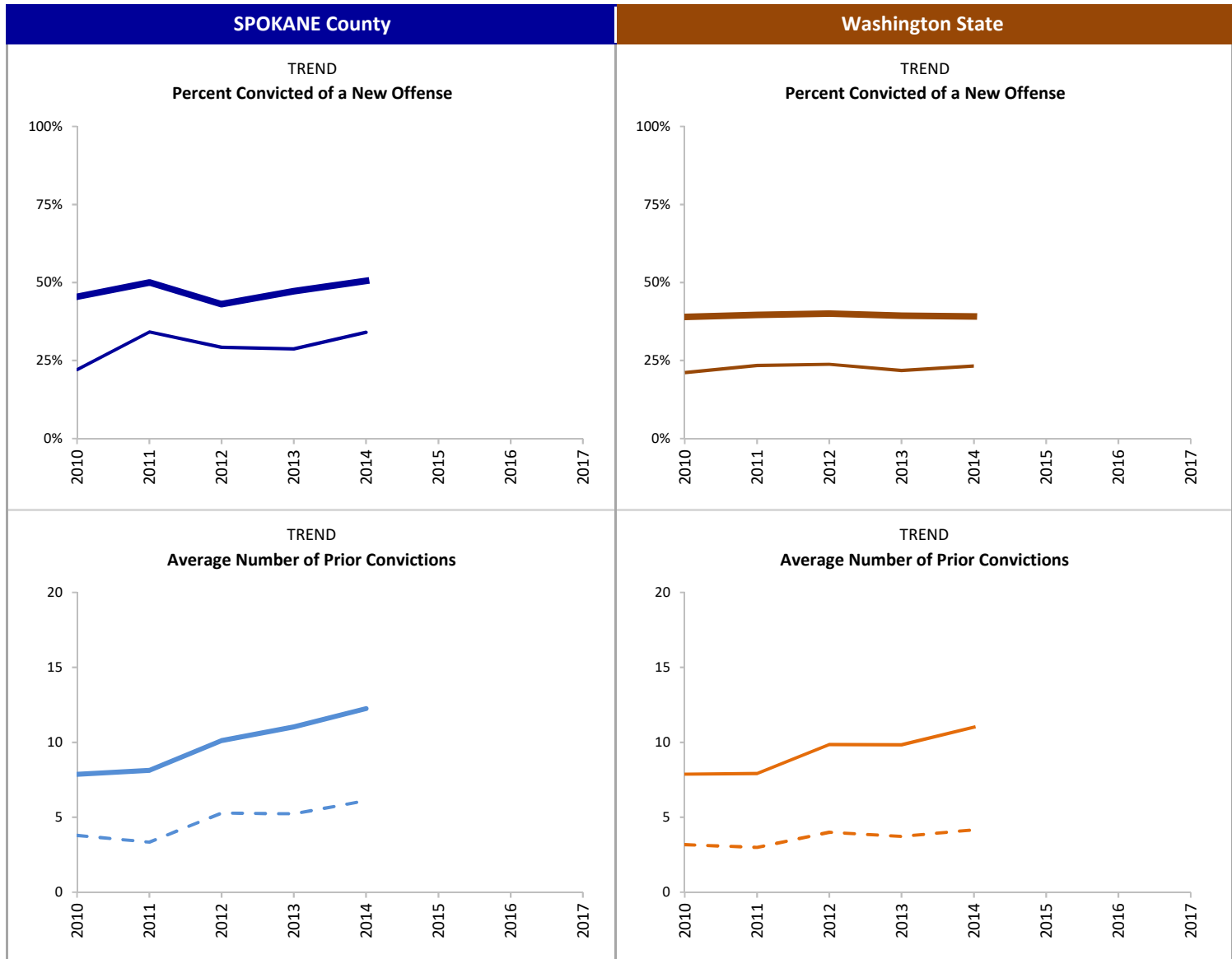
- Any Prior
- - - Felony Prior

**INDICATOR**

Percent of drug court participants convicted of a new offense, committed within 36-months after starting substance use disorder treatment. Average number of prior convictions is based on a count of each charge that resulted in a conviction prior to starting treatment.

**SOURCE & POPULATION**

DSHS Integrated Client Databases. Drug Court participants who started substance use disorder treatment.





SUPPORTING TABLES | **36-Month Recidivism and Prior Convictions**

CALENDAR YEAR	SPOKANE County							Washington State								
	2010	2011	2012	2013	2014	2015	2016	2017	2010	2011	2012	2013	2014	2015	2016	2017
<b>Total New Enrollment</b>	77	82	65	108	97				1,201	1,104	1,168	1,095	1,253			
<b>NEW Conviction (36-Months)</b>																
<b>Any Crime</b>	45%	50%	43%	47%	51%				39%	40%	40%	39%	39%			
Total with Any Crime	35	41	28	51	49				468	437	468	431	490			
<b>Felony</b>	22%	34%	29%	29%	34%				21%	23%	24%	22%	23%			
Total with a Felony	17	28	19	31	33				254	259	278	239	291			
<b>Violent Felony</b>	--	--	--	--	--				4%	4%	6%	4%	5%			
Total with a Violent Felony									46	46	66	42	60			
<b>Average Number PRIOR Convictions</b>																
<b>Any Crime</b>	7.9	8.1	10.1	11.0	12.2				7.9	7.9	9.9	9.8	11.0			
Total with Any Crime	72	74	59	103	93				1,100	1,026	1,085	1,040	1,186			
<b>Felony</b>	3.8	3.3	5.3	5.2	6.1				3.3	3.1	4.2	3.9	4.4			
Total with Any Felony	59	57	51	81	85				889	809	922	865	1,001			
<b>Violent Felony</b>	--	--	--	0.3	0.4				0.1	0.1	0.2	0.2	0.2			
Total with a Violent Felony				23	27				120	131	185	178	213			
<b>Non-Violent Felony</b>	3.7	3.2	5.1	4.9	5.7				3.2	3.0	4.0	3.7	4.2			
Total with a Non-Violent Felony	59	57	51	81	85				889	809	922	865	1,001			
<b>Misdemeanor</b>	4.1	4.8	4.8	5.8	6.1				4.6	4.8	5.6	5.9	6.6			
Total with a Misdemeanor	63	69	57	96	88				1,011	942	1,018	977	1,124			



# SPOKANE County

## Drug Court Substance Use Disorder Treatment Participation

NOVEMBER 2018

### Substance Use Disorder Treatment

**LEGEND**

**Engagement and Retention**

- █ Engaged in Treatment
- █ Retained in Treatment

**Primary Substance**

- █ Heroin/Other Opioids
- █ Methamphetamine

**Average Days of SUD Tx**

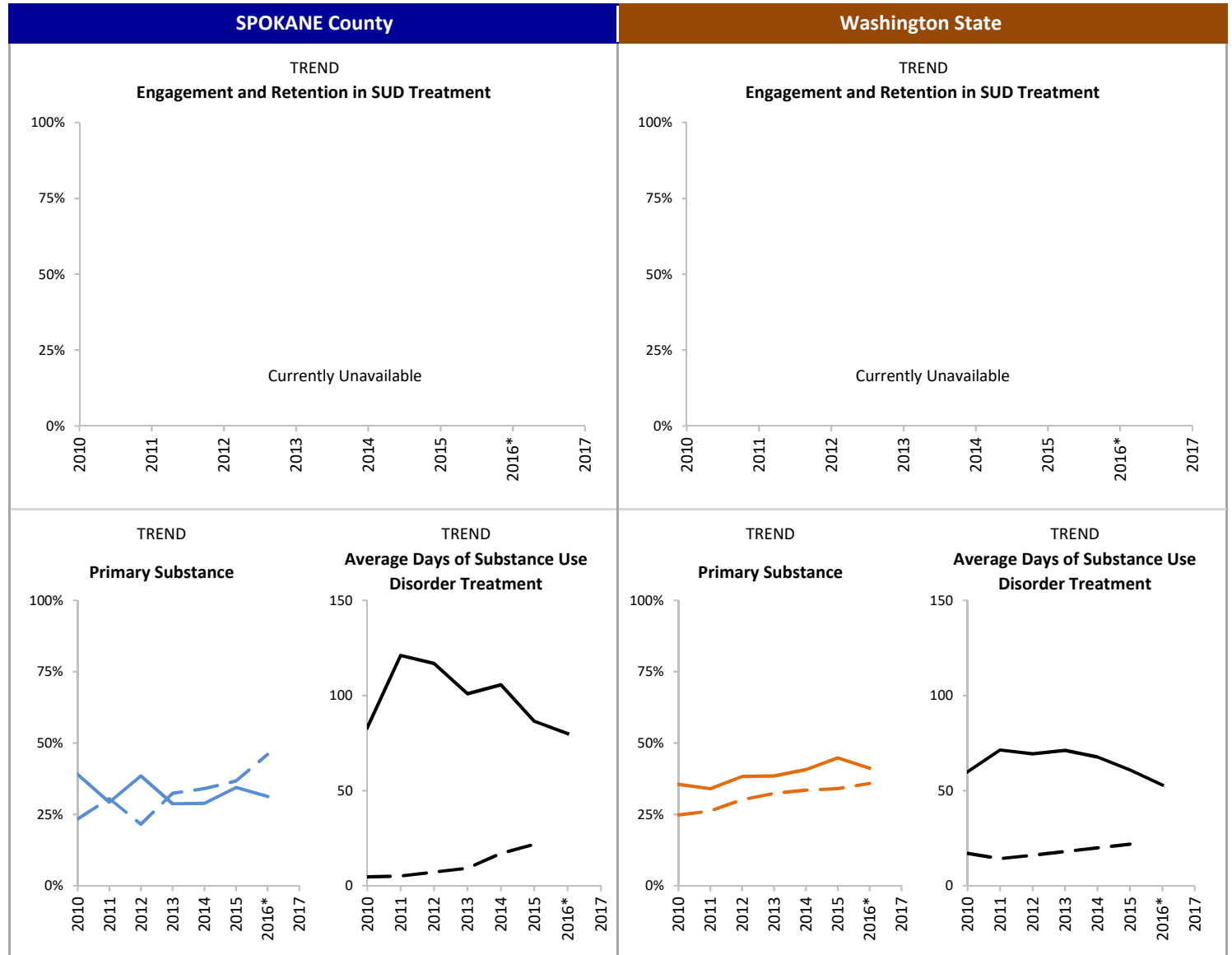
- █ Outpatient
- █ Inpatient

**INDICATOR**

Percent of drug court participants with Engagement and Retention in substance use disorder treatment. Engagement is defined as initiating treatment and receiving two additional services within 30 days after initiation. Retention is defined as receiving treatment services at least once per month for the first 90 days after initiation (see Technical Notes for full definition).

**SOURCE & POPULATION**

DSHS Integrated Client Databases. Drug Court participants who started substance use disorder treatment.



\*Incomplete due to changes in reporting systems resulting from the integration of behavioral and physical health care services. See technical notes for details.

SUPPORTING TABLES | Substance Use Disorder Treatment

CALENDAR YEAR	SPOKANE County							Washington State								
	2010	2011	2012	2013	2014	2015	2016*	2017	2010	2011	2012	2013	2014	2015	2016*	2017
<b>Total New Enrollment</b>	77	82	65	108	97	61	64		1,201	1,104	1,168	1,095	1,253	1,132	990	
<b>Engagement and Retention</b>																
<b>Engagement</b>																
Total Engaged in Treatment	Currently Unavailable							Currently Unavailable								
<b>Retention</b>																
Total Retained in Treatment																
<b>Primary Substance</b>																
<b>Heroin and Other Opioids</b>	39%	29%	38%	29%	29%	34%	31%		35%	34%	38%	38%	41%	45%	41%	
Total Heroin and Other Opioids	30	24	25	31	28	21	20		426	375	447	421	510	507	407	
<b>Methamphetamine</b>	23%	30%	22%	32%	34%	37%	46%		25%	26%	30%	32%	33%	34%	36%	
Total Methamphetamine	18	25	14	35	33	22	29		296	287	350	352	416	379	318	
<b>Cannabis</b>	--	23%	17%	13%	11%	--	--		14%	19%	14%	13%	10%	9%	8%	
Total Cannabis		19	11	14	11				163	210	160	140	122	97	68	
<b>Alcohol</b>	--	--	--	14%	--	--	--		13%	11%	8%	9%	8%	7%	6%	
Total Alcohol				15					157	122	96	93	95	75	54	
<b>Type of SUD Treatment</b>																
<b>Outpatient Treatment</b>	100%	100%	100%	99%	100%	100%	100%		95%	95%	95%	95%	92%	93%	93%	
Number in Outpatient Tx	77	82	65	107	97	61	64		1,141	1,053	1,107	1,035	1,154	1,057	916	
Average Days in Outpatient Tx	83.1	121.1	116.9	100.9	105.6	86.5	79.9		60.0	71.3	69.3	71.2	67.6	60.9	52.9	
<b>Inpatient Treatment</b>	16%	15%	--	30%	37%	43%	N/A		28%	28%	30%	33%	35%	40%	N/A	
Number in Inpatient Tx	12	12		32	36	26			332	310	349	365	433	453		
Average Days in Inpatient Tx	4.6	5.1		9.2	16.9	21.7			17.0	14.2	16.0	17.9	19.9	21.8		
<b>Medication Assisted Treatment</b>	--	--	--	--	--	18%	--		7%	6%	8%	7%	11%	15%	21%	
Number in Medication Assisted Tx						11			82	68	91	75	144	167	208	

\*Incomplete due to changes in reporting systems resulting from the integration of behavioral and physical health care services. See technical notes for details

--Cells representing fewer than eleven individuals were suppressed to protect client confidentiality.



# SPOKANE County

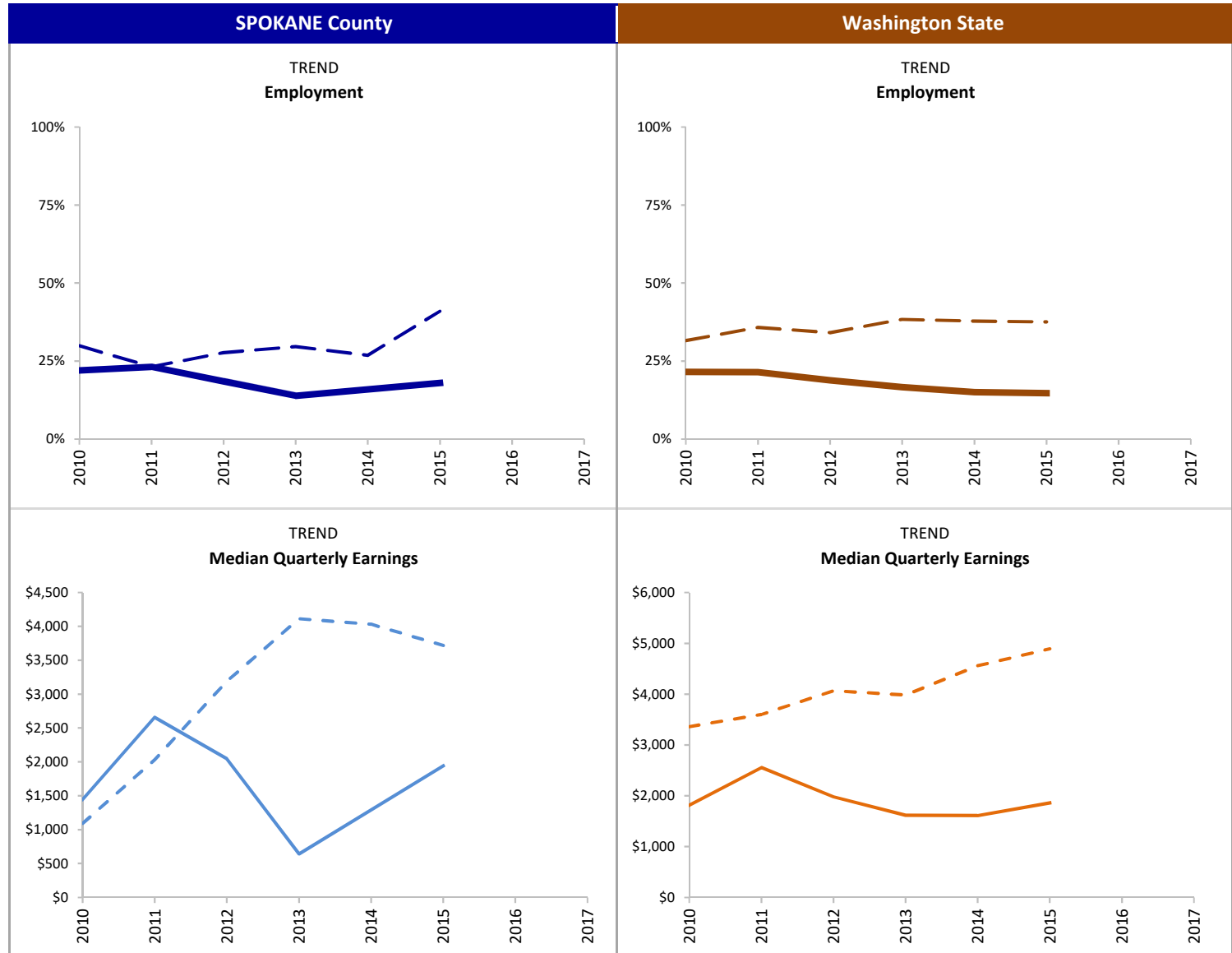
## Drug Court Employment and Earnings

### Employment and Earnings

- LEGEND**
- Employment**
- Baseline
  - - 18-Months Post
- Earnings**
- Baseline
  - - 18-Months Post

**INDICATOR**  
 Percent of drug court participants employed part-time or full-time at baseline and 18-months after starting substance use disorder treatment. Baseline includes individuals with any employment in the quarter prior to starting treatment. Individuals were considered employed 18-months post if they had any earnings in the 6th quarter (18-months) after starting treatment. Median quarterly earnings is calculated only for those with non-zero earnings in the quarter.

**SOURCE & POPULATION**  
 DSHS Integrated Client Databases. Drug Court participants who started substance use disorder treatment.



\*Incomplete due to changes in reporting systems resulting from the integration of behavioral and physical health care services. See technical notes for details.  
 --Data was suppressed.

SUPPORTING TABLES | **Employment**

CALENDAR YEAR	SPOKANE County								Washington State							
	2010	2011	2012	2013	2014	2015	2016	2017	2010	2011	2012	2013	2014	2015	2016	2017
<b>Total New Enrollment</b>	77	82	65	108	97	61			1,201	1,104	1,168	1,095	1,253	1,132		
<b>Employed Prior to Enrollment</b>																
Percent Employed Baseline	22%	23%	18%	14%		18%			22%	21%	19%	17%	15%	15%		
Number Employed at Baseline	17	19	12	15	--	11			259	237	220	182	188	167		
Median Qtrly Earnings Baseline	\$ 1,445	\$ 2,658	\$ 2,046	\$ 642		\$ 1,943			\$ 1,815	\$ 2,555	\$ 1,980	\$ 1,619	\$ 1,610	\$ 1,860		
Median Qtrly Hours Worked Baseline	169	152	184	58		192			164	208	166	141	130	153		
<b>Employed 18 Months After Enrollment</b>																
Percent Employed 18-Months Post	30%	23%	28%	30%	27%	41%			32%	36%	34%	38%	38%	38%		
Number Employed 18-Months Post	23	19	18	32	26	25			379	395	398	420	474	425		
Median Qtrly Earnings 18-Mos. Post	\$ 1,091	\$ 2,034	\$ 3,190	\$ 4,112	\$ 4,033	\$ 3,719			\$ 3,360	\$ 3,601	\$ 4,067	\$ 3,984	\$ 4,558	\$ 4,893		
Median Qtrly Hours 18-Mos. Post	120	160	273	306	334	263			309	320	359	328	360	357		

--Cells representing fewer than eleven individuals were suppressed to protect client confidentiality.



# SPOKANE County

## Drug Court Medicaid Enrollment

### Medicaid Enrollment

**LEGEND**

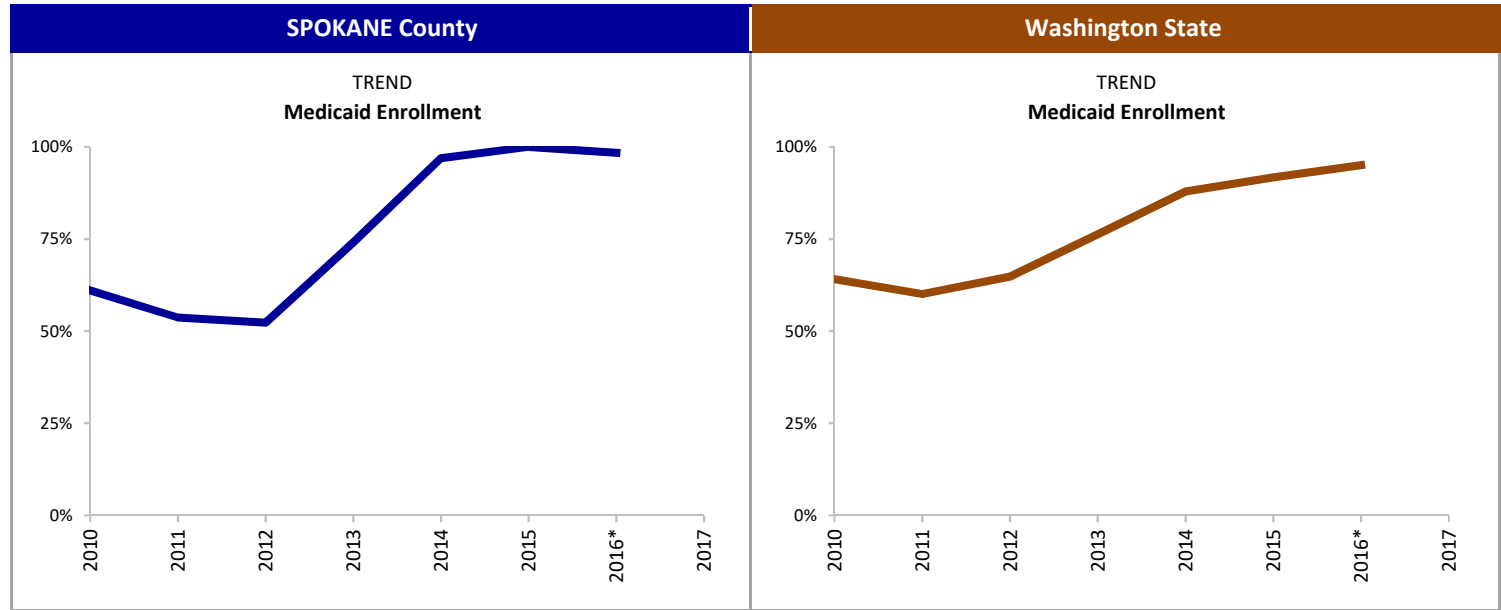
— Percent Enrolled in Medicaid

**INDICATOR**

Percent of drug court participants enrolled in Medicaid at any point during the 12-months after starting substance use disorder treatment.

**SOURCE & POPULATION**

DSHS Integrated Client Databases. Drug Court participants who started substance use disorder treatment.



\*Incomplete due to changes in reporting systems resulting from the integration of behavioral and physical health care services. See technical notes for details.

### SUPPORTING TABLES | Medicaid Enrollment

CALENDAR YEAR	SPOKANE County								Washington State							
	2010	2011	2012	2013	2014	2015	2016*	2017	2010	2011	2012	2013	2014	2015	2016*	2017
<b>Total New Enrollment</b>	77	82	65	108	97	61	64		1,201	1,104	1,168	1,095	1,253	1,132	990	
<b>Medicaid Enrollment</b>																
Percent Enrolled in Medicaid	61%	54%	52%	74%	97%	100%	98%		64%	60%	65%	76%	88%	92%	95%	
Number Enrolled in Medicaid	47	44	34	80	94	61	63		770	663	757	835	1,101	1,038	941	



# SPOKANE County

## Drug Court Participants: Recidivism and Key Outcome Measures

### TECHNICAL NOTES

#### POPULATION

- **Total New Enrollment:** Includes all new drug court participants who started substance use disorder treatment within 12-months of their drug court start date. The dashboard indicators are based on the enrolled population. Blank cells indicate data were missing or suppressed due to fewer than 10 enrolled participants.
- The decrease in new enrollment in 2016 is due to underreporting of treatment records during the implementation of a new behavioral health data system and the integration of behavioral and physical health care. It should not be interpreted as a decrease in the number of individuals participating in drug courts. Future updates will address this shortcoming with available data.

#### INDICATORS

- **Recidivism:** Defined as a new conviction for an offense that occurred 18- or 36-months after the month the participant started substance use disorder treatment. The conviction may occur anytime after the offense date. The average number of prior convictions is based on a count of all charges that resulted in a conviction for offenses that occurred prior to the treatment start date. Conviction data were obtained from the Administrative Office of the Courts.
- **Substance Use Disorder Treatment:** The Washington Circle Measure of Engagement is defined as initiating substance use disorder treatment and receiving two additional services within 30 days of initiation. Retention is an additional measure used in Washington State which is defined as receiving treatment services at least once per month for the first 90 days after initiation, or completing treatment and being discharged within 90 days, or transferring to a residential treatment facility within 90 days. Engagement and Retention measures are calculated only for those whose first treatment episode was an outpatient service. Data from the Treatment and Assessment Report Generation Tool (TARGET) and the Behavioral Health Data System (BHDS) were used to identify substance use disorder treatment, primary substance and average days of treatment. Treatment shown is not necessarily the treatment approved by the court. Due to changes in the behavioral health data system, the engagement and retention measures are not currently available.
- **Employment:** Quarterly employment and earnings data were obtained from the Washington State Employment Security Department. Median quarterly earnings and hours worked is reported only for individuals with non-zero earnings during the quarter.
- **Medicaid Enrollment:** Obtained from eligibility codes available in the DSHS Integrated Client Database (ICDB).

#### DATA SOURCES

- DSHS Integrated Client Database
- Washington State Drug Courts
- Drug Court Case Management System (DCCM)
- Administrative Office of the Courts Adult Drug Court Docket Codes

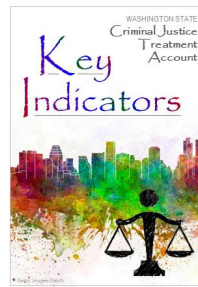
#### MISSING DATA

- Klickitat, Pacific, Skagit and Whitman county drug court data are missing for 2016.

# SPOKANE County

## Drug Court Participants: Recidivism and Key Outcome Measures

NOVEMBER 2018



### CONTRIBUTORS

Paula Henzel, RDA • Jim Mayfield, RDA • Callie Black, RDA • Barbara E.M. Felver, RDA

<https://www.dshs.wa.gov/rda>