



Report to the Legislature

**Employment Status of Medical Assistance Clients
and Persons with Dependents with DSHS
Medical Coverage**

**Statewide Data for CY 2009
By Firm Detail for January 2010 and April 2010**

As Required by Engrossed Substitute House Bill 3079

ABRIDGED VERSION

With Detail for Top 10 Firms

March 2011

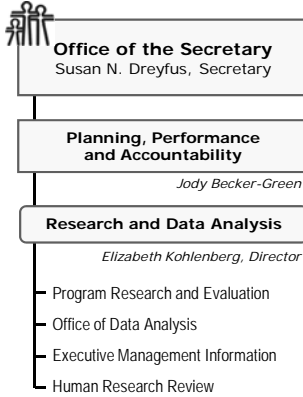
Department of Social and Health Services
Planning, Performance and Accountability
Research and Data Analysis Division
PO Box 45204
Olympia, WA 98504-5204
(360) 902-0701
Fax: (360) 902-0705

DSHS

WASHINGTON STATE

Department of Social and Health Services

Headquarters located at:
14th and Jefferson Street
Olympia, WA 98504



RDA

DSHS Research and Data Analysis Division

Director: Elizabeth Kohlenberg, PhD
e-mail: kohleer@dshs.wa.gov
14th and Jefferson Street
PO Box 45204
Olympia, WA 98504-5204
360.902.0701

Report to the Legislature

Employment Status of Medical Assistance Clients and Persons with Dependents with DSHS Medical Coverage | **ABRIDGED**

Statewide Data for 2009 By Firm Detail for 1/10 and 4/10

As Required by Engrossed Substitute
House Bill 3079

March 2011

Prepared by

DSHS Research and Data Analysis Division

David Mancuso, PhD
Lijian He, PhD
Barbara E.M. Felver, MES, MPA

with

Washington State
Medicaid Purchasing Administration

and

Washington State
Employment Security Department

RDA report number 9.102A

360.902.0701

RDA's Online Library:
www.dshs.wa.gov/rda

Employment Status of Medical Assistance Clients and Persons with Dependents with DSHS Medical Coverage

Statewide Data for CY 2009

By Firm Detail for January 2010 and April 2010

As Required by Engrossed Substitute House Bill 3079

ABRIDGED VERSION

With Detail for Top 10 Firms

Contents	1
Introduction	3
Key Findings.....	4
Overview of Counts of Employed Persons Associated with DSHS Medical Coverage and DSHS Covered Lives Associated with Employed Persons.....	4
Trends in Employment	5
DSHS Medical Program's Employed Clients and Non-Client Persons with Dependents with DSHS Medical Coverage	5
Data Sources and Limitations	5
Aggregate Tables	7
<i>Employment Status of Medical Assistance Clients and Persons with Dependents with DSHS Medical Coverage: Calendar Year 2009</i>	
Table 1A. Total Employed DSHS Medical Assistance Clients and Non-Client Persons with Dependents with DSHS Medical Coverage: <i>Yearly Average per Quarter</i>	8
Table 1B. Total Employed DSHS Medical Assistance Clients and Non-Client Persons with Dependents with DSHS Medical Coverage: <i>Annual Profile</i>	9
Table 2A. Employed DSHS Medical Assistance Clients: <i>Yearly Average per Quarter</i>	10
Table 2B. Employed DSHS Medical Assistance Clients: <i>Annual Profile</i>	11
Table 3A. Employed Non-Client Persons with Dependents with DSHS Medical Coverage: <i>Yearly Average per Quarter</i>	12
Table 3B. Employed Non-Client Persons with Dependents with DSHS Medical Coverage: <i>Annual Profile</i>	13
By-Firm Tables.....	15
<i>Employment of Medical Assistance Clients and Persons with Dependents with DSHS Medical Coverage by Firm: January and April 2010</i>	
Table 4. Rank of Firms by Number of DSHS Medical Clients, High to Low	17
Aggregate Table. Washington State Roll-up	30
ABRIDGED Supplemental Tables. Following Rank Order Presented in Table 4	For Top 10 Firms

Employment Status of Medical Assistance Clients and Persons with Dependents with DSHS Medical Coverage

Statewide Data for CY 2009

By Firm Detail for January 2010 and April 2010

As Required by Engrossed Substitute House Bill 3079

March 2011

INTRODUCTION

Nationally, an increasing number of employers faced with rising employee health care premium costs either have chosen to drop health care benefits for their employees or to pass on to their employees a greater share of coverage costs. As a consequence, more employees and their dependents either go without health insurance, apply for state purchased health care programs supported with public funds, or seek uncompensated care at hospitals and community clinics.

In response to these trends, the 2006 State Legislature enacted Engrossed Substitute House Bill (ESHB) 3079. This legislation directed the Department of Social and Health Services (DSHS) and the Health Care Authority (HCA) in coordination with the Employment Security Department (ESD) to report annually on the employment of Medical Assistance clients and Basic Health Program (BHP) enrollees. This report provides both aggregate and employer-specific data related to DSHS Medical Assistance clients and non-client parents with dependents with DSHS medical coverage, as specified in the legislation (enacted as Chapter 264, Laws of 2006 and codified in RCW 70.47.170).

Governor Gregoire signed ESHB 3079, but vetoed the emergency clause included in the bill. The Governor's veto message urged caution when interpreting information provided in this report:

The employer information to be provided by the Health Care Authority (HCA) and the Department of Social and Health Services (DSHS) is not a requirement for enrollment or eligibility. Consequently, data contained in the reports will have been provided on a voluntary basis, and will be unverified. The two reports—an employer specific report and an aggregated report—will originate from separate sources. Therefore, they will not be comparable. The reports will also be based on a point-in-time data collection and will therefore not reflect changes in employment status. These data limitations must be considered when interpreting the reports.

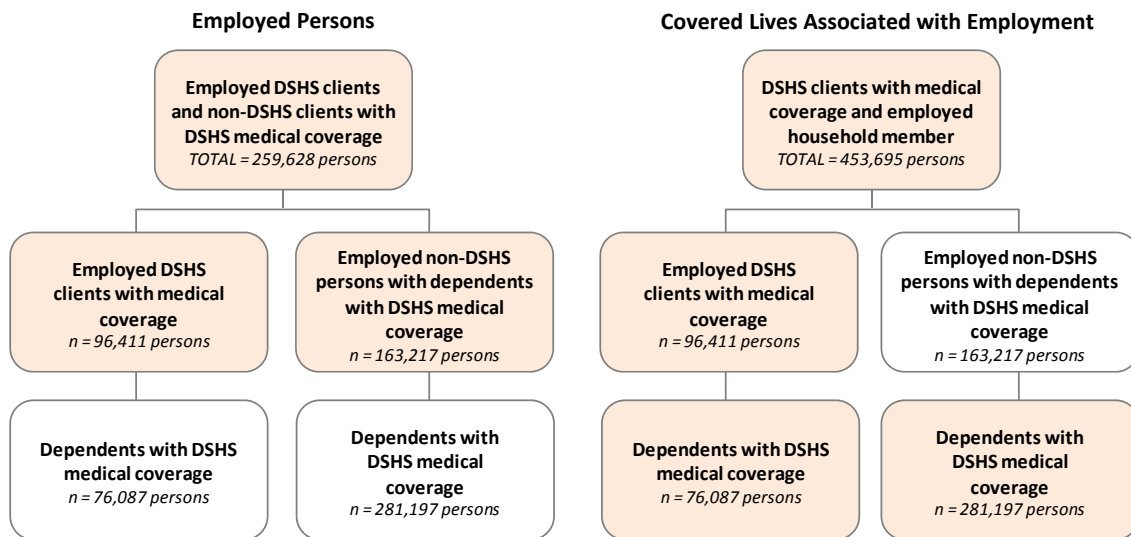
The Governor also noted the programs provide health care services to eligible working persons and expressed concern that the information "not be misconstrued to portray beneficiaries of our Basic Health and Medicaid programs in a negative light."

ESHB 3079 directs the provision of two separate sets of information related to DSHS Medical Assistance clients and non-client parents with dependents with DSHS medical coverage:

- Aggregate data for calendar year (CY) 2009 by industry, firm size, and public/private ownership type. These data are based on ESD quarterly wage data.
- By-firm data for January and June 2010 for employers associated with 50 or more persons with DSHS medical coverage. These data are based on DSHS Automated Client Eligibility System (ACES) employer name data. (Due to information technology system changes that occurred in May 2010, this report provides data for January and April 2010.)

KEY FINDINGS

Overview of Counts of Employed Persons Associated with DSHS Medical Coverage and DSHS Covered Lives Associated with Employed Persons



1. In the average quarter in CY 2009, there were 1,054,239 persons with DSHS medical coverage, excluding clients who received only family planning coverage.
2. In the average quarter in CY 2009, there were 96,411 persons with DSHS medical coverage and ESD-reported earnings in the quarter (see Table 2A "All Firms"). This represents about 9 percent of all persons with DSHS medical coverage in the average quarter in CY 2009.
3. The 96,411 employed DSHS persons had 76,087 dependents with DSHS medical coverage, for an average quarterly total of 172,498 covered lives (see Table 2B "All Firms"). This represents 16 percent of all persons with DSHS coverage in the average quarter in CY 2009.
4. In the average quarter in CY 2009, there were 163,217 employed non-client persons with dependents with DSHS coverage (see Table 3A "All Firms"). There were 281,197 dependents with DSHS coverage associated with these employed non-clients (see Table 3B "All Firms"). This represents 27 percent of all persons with DSHS medical coverage in the average quarter in CY 2009.
5. Combining employed clients and non-client persons, there were 259,628 employed DSHS clients or non-client persons with dependents with DSHS medical coverage in the average calendar quarter in CY 2009 (see Table 1A "All Firms").
6. In the average quarter in CY 2009, there were 453,695 DSHS covered lives associated with the 259,628 employed DSHS clients and persons with dependents with DSHS medical coverage (Table 1B "All Firms"). This represents 43 percent of all persons with DSHS medical coverage in the average quarter in CY 2009.
7. The 259,628 employed DSHS medical clients or non-client persons with dependents with DSHS medical coverage in CY 2009 represented a 1.2 percent increase over the 256,489 employed clients/persons observed in CY 2008.
8. In CY 2009, about 60 percent of employed DSHS clients and non-client persons with dependents with DSHS coverage were employed by firms with more than 50 employees (Table 2A and 3A "All Firms").
9. Employed non-client persons with dependents with DSHS medical coverage worked more hours than employed DSHS medical clients. Nearly half of employed non-client persons with dependents with DSHS coverage worked full-time (more than 455 hours) in the quarter (Table 3A "All Firms"), compared to only 15 percent of employed clients (Table 2A "All Firms").

10. There were 5.1 million months of DSHS medical coverage in CY 2009 associated with employed DSHS clients and non-client persons with dependents with DSHS medical coverage. About 37 percent of the months were associated with employed DSHS clients (1,909,403 months), and about 63 percent were associated with employed non-client persons with dependents with DSHS coverage (3,206,714 months).
11. Estimated DSHS medical and mental health expenditures for the months of coverage associated with employed clients and non-client persons with dependents with DSHS coverage were \$1.205 billion in CY 2009 (all funds). Of this total, approximately \$615 million were associated with employed DSHS medical clients, and \$590 million were associated with employed non-client persons with dependents with DSHS medical coverage.
12. Associated annual DSHS coverage costs were greatest for persons employed in the following industries: Health and Social Assistance (\$190 million); Retail Trade (\$170 million); and Accommodation and Food Services (\$157 million).
13. Almost all (92.4 percent) of the annual DSHS coverage costs were associated with private employers (\$1.11 billion), as opposed to public employers (\$92 million).

TRENDS IN EMPLOYMENT

The table below provides an overview of the trend in the proportion of DSHS medical clients associated with employment from 2005 to 2009, as identified using ESD quarterly earnings data. Some of the year-to-year variation in the table below is the result of slight changes in data processing methods over the reporting period.

The overall proportion of DSHS clients associated with employment (clients who were employed or the dependent of an employed person) declined from 45 percent of the overall DSHS medical caseload in 2008 to 43 percent of the caseload in 2009. This reflects the impact of the sharp rise in unemployment that began in late 2008 and continued into 2009.

**DSHS Medical Program's Employed Clients and Non-Client Persons
with Dependents with DSHS Medical Coverage**

	Employed DSHS Clients and Non-DSHS Clients with Dependent DSHS Clients	Average Quarterly DSHS Medical Covered Lives	Average Quarterly DSHS Enrollment	Percent of DSHS Clients Associated with Employment
CY 2005	240,062	425,765	936,860	45%
CY 2006	243,114	427,448	908,870	47%
CY 2007	231,111	404,026	915,322	44%
CY 2008	256,489	440,925	975,218	45%
CY 2009	259,628	453,695	1,054,239	43%

DATA SOURCES AND LIMITATIONS

Aggregate data by industry, firm size, and public/private ownership type are based on ESD quarterly earnings data and monthly medical eligibility data for CY 2009. ESD earnings data do not include self-employment, federal government employment, or unreported earnings.

By-firm data are based on ACES employer name data linked to medical eligibility data for January and April 2010. ACES employer name information does not permit the identification of separately owned franchises operating under the same business name. The employer name information used in this report is self-reported; it is not a required element of the application for public assistance and is not independently verified by staff. Employer rankings are based on the average monthly number of employed persons associated with DSHS medical clients in January and April 2010.

The tables report the number of DSHS clients or persons with dependents with DSHS medical coverage who were employed, and the associated “member months” by type of coverage. Coverage type was determined based on Medicaid Management Information System (MMIS) program, match and medical codes.

The Family Medical coverage group includes persons receiving TANF and related medical coverage. The Apple Health for Kids program provides medical coverage to children in families that do not meet TANF eligibility criteria but have household income below 200 percent of the Federal Poverty Guideline (FPL) through Medicaid funding, 300 percent of FPL through the Children’s Health Insurance Program (CHIP) funding, and up to 300 percent of the FPL for non-citizen children through the Children’s Health Program (CHP). This coverage group also includes a small number of children enrolled in Foster Care or Adoptions Support coverage. This coverage group also includes a small number of children enrolled in Foster Care or Adoptions Support coverage. The Pregnant Women program provides Medicaid coverage to low-income pregnant women. The Persons with Disabilities coverage group includes persons enrolled in Medicaid Disabled, Medicaid Blind, General Assistance, and Alcohol and Drug Abuse Treatment and Support Act (ADATSA) coverage. The “Other” coverage group includes a small number of persons receiving DSHS medical coverage through programs for refugees and the elderly. Clients who received family planning coverage only were excluded from the analysis.

Employed non-client persons with dependents with DSHS medical coverage were counted if they were part of a household with at least one person who received DSHS medical coverage. To be counted, the employed person had to be identified as the head of household, spouse, or unmarried co-parent of a child in common with the head of household.

Counts of employed clients or persons with dependents with DSHS medical coverage were associated with a single “primary employer” in each month. The vast majority of employed clients or persons with dependents with DSHS medical coverage had a single employer in the quarter. In cases where the person had more than one employer in the quarter, the primary employer was defined to be the employer from whom the person received the greatest earnings.

To create an unduplicated count of member months and Medicaid Purchasing Administration (MPA) expenditures associated with employed persons, in the cases where a dependent was associated with more than one employed person, we associated the dependent with the person who had the highest earnings. For the CY 2009 aggregate data tables, per member per month MPA Medical Assistance expenditure estimates were based on February 2010 forecast per capita estimates for SFY 2010. Per member per month DSHS Mental Health expenditure estimates were based on statewide average RSN capitation rates for SFY 2010.

For the by-firm tables, per member per month MPA Medical Assistance expenditures were based on February 2010 forecast per capita estimates for SFY 2010. Per member per month DSHS Mental Health expenditure estimates were based on statewide average RSN capitation rates for SFY 2010.



Aggregate Tables

Employment Status of Medical Assistance Clients and Persons
with Dependents with DSHS Medical Coverage:

Calendar Year 2009



March 2011

Washington State Department of Social and Health Services

DSHS | Employment of Medical Assistance Clients

Research and Data Analysis Division

TABLE 1A.

Total Employed DSHS Medical Assistance Clients and Non-Client Persons with Dependents with DSHS Medical Coverage

CY 2009	Number of Employed Clients or Persons with Dependents						Yearly Average per Quarter			
	QUARTER				YEARLY Average per Quarter	Percent of Total Employed Clients/ Persons	BY HOURS WORKED IN QUARTER			
	1	2	3	4			1 to 261	262 to 455	More than 455	Unknown
All Firms	245,301	258,519	271,508	263,185	259,628	100.0%	95,135	69,984	91,290	3,220
By Industry										
Agriculture (11)	16,607	23,764	27,918	20,829	22,280	8.6%	8,833	4,921	8,510	17
Mining (21)	155	162	175	166	165	0.1%	40	49	75	1
Utilities (22)	259	320	298	252	282	0.1%	87	54	141	0
Construction (23)	13,898	14,292	14,872	14,425	14,372	5.5%	5,781	4,067	4,480	45
Manufacturing (31-33)	18,801	18,503	19,676	19,568	19,137	7.4%	3,727	4,638	10,762	10
Wholesale Trade (42)	7,951	8,374	8,497	8,502	8,331	3.2%	1,736	1,668	4,922	6
Retail Trade (44)	35,596	35,374	36,433	38,687	36,523	14.1%	12,675	9,690	14,128	30
Transportation/Warehousing (48)	6,074	6,084	6,362	6,468	6,247	2.4%	1,836	1,647	2,732	33
Information (51)	2,373	2,486	2,460	2,455	2,444	0.9%	916	526	985	18
Finance and Insurance (52)	4,762	4,854	4,785	4,818	4,805	1.9%	944	1,250	2,586	25
Real Estate (53)	4,835	4,974	5,099	4,923	4,958	1.9%	1,674	1,077	2,197	10
Professional/Technical (54)	5,709	5,547	5,346	5,694	5,574	2.1%	2,090	1,280	2,188	17
Management (55)	430	431	453	436	438	0.2%	169	116	152	0
Administrative/Waste (56)	18,273	19,022	20,699	20,210	19,551	7.5%	9,065	4,729	5,663	94
Educational Services (61)	10,335	10,558	9,648	10,790	10,333	4.0%	6,005	2,833	1,490	6
Health Care, Soc. Assistance (62)	38,316	39,387	40,025	40,069	39,449	15.2%	12,127	12,362	14,938	23
Arts and Entertainment (71)	6,413	7,016	7,451	6,953	6,958	2.7%	3,074	1,857	2,017	11
Accommodation and Food (72)	35,613	37,330	38,433	36,153	36,882	14.2%	17,718	12,449	6,687	30
Other Services (81)	13,467	14,195	16,258	16,194	15,029	5.8%	4,764	3,635	4,029	2,601
Other Government (92)	5,111	5,538	6,394	5,460	5,626	2.2%	1,875	1,143	2,607	1
Unknown	323	308	226	133	248	0.1%	1	1	2	245
By Ownership Type										
Public	19,758	20,317	20,470	20,521	20,267	7.8%	8,321	5,107	6,593	246
Private	225,543	238,202	251,031	242,659	239,359	92.2%	86,814	64,877	84,695	2,974
Unknown	0	0	7	5	3	0.0%	1	1	2	0
By Firm Size										
1-50	99,348	103,229	111,103	109,854	105,884	40.8%	42,093	28,941	32,645	2,204
51-100	22,410	24,486	25,057	24,263	24,054	9.3%	8,089	6,301	9,651	14
101-1000	76,356	80,823	84,455	79,912	80,387	31.0%	27,864	20,975	31,497	51
1001-5000	34,289	36,440	37,715	37,739	36,546	14.1%	13,757	10,934	11,784	70
5000+	12,898	13,541	13,171	11,412	12,756	4.9%	3,331	2,833	5,711	880
Unknown	0	0	7	5	3	0.0%	1	1	2	0



March 2011

Washington State Department of Social and Health Services

DSHS | Employment of Medical Assistance Clients

Research and Data Analysis Division

TABLE 1B.

Total Employed DSHS Medical Assistance Clients and Non-Client Persons with Dependents with DSHS Medical Coverage

CY 2009	Number of Employed Clients or Persons with Dependents		Annual Profile		
	YEARLY Average per Quarter	Percent of Total Employed Clients/Persons	Average Quarterly Covered Lives Associated with Employed Clients/Persons	Annual Months of DSHS Coverage Associated with Employed Clients/Persons	Annual DSHS Medical and Mental Health Costs for Associated DSHS Coverage (Estimated)
All Firms	259,628	100.0%	453,695	5,116,117	\$1,205,478,252
By Industry					
Agriculture (11)	22,280	8.6%	38,899	448,826	\$94,959,954
Mining (21)	165	0.1%	352	3,981	\$792,878
Utilities (22)	282	0.1%	609	6,732	\$1,415,364
Construction (23)	14,372	5.5%	29,815	333,734	\$71,997,225
Manufacturing (31-33)	19,137	7.4%	37,954	429,953	\$90,813,013
Wholesale Trade (42)	8,331	3.2%	15,908	179,678	\$38,495,564
Retail Trade (44)	36,523	14.1%	59,589	670,239	\$169,803,112
Transportation/Warehousing (48)	6,247	2.4%	12,669	142,500	\$31,875,756
Information (51)	2,444	0.9%	4,145	46,092	\$11,114,831
Finance and Insurance (52)	4,805	1.9%	8,510	94,766	\$21,305,513
Real Estate (53)	4,958	1.9%	8,861	99,296	\$23,553,091
Professional/Technical (54)	5,574	2.1%	9,753	108,146	\$24,985,519
Management (55)	438	0.2%	705	8,024	\$1,977,774
Administrative/Waste (56)	19,551	7.5%	35,650	400,058	\$99,288,007
Educational Services (61)	10,333	4.0%	17,133	194,346	\$43,229,163
Health Care, Soc. Assistance (62)	39,449	15.2%	70,570	797,667	\$190,157,955
Arts and Entertainment (71)	6,958	2.7%	11,165	124,453	\$31,270,439
Accommodation and Food (72)	36,882	14.2%	54,129	608,862	\$157,404,886
Other Services (81)	15,029	5.8%	26,022	293,768	\$72,811,675
Other Government (92)	5,626	2.2%	10,711	119,518	\$26,955,536
Unknown	248	0.1%	549	5,478	\$1,270,998
By Ownership Type					
Public	20,267	7.8%	36,734	412,989	\$92,194,672
Private	239,359	92.2%	416,954	4,703,057	\$1,113,271,956
Unknown	3	0.0%	7	71	\$11,624
By Firm Size					
1-50	105,884	40.8%	184,017	2,073,964	\$485,335,590
51-100	24,054	9.3%	42,833	483,332	\$111,995,637
101-1000	80,387	31.0%	141,342	1,595,447	\$373,616,950
1001-5000	36,546	14.1%	63,926	720,305	\$172,914,657
5000+	12,756	4.9%	21,570	242,998	\$61,603,795
Unknown	3	0.0%	7	71	\$11,624



March 2011

Washington State Department of Social and Health Services

DSHS | Employment of Medical Assistance Clients

Research and Data Analysis Division

TABLE 2A.

Employed DSHS Medical Assistance Clients

CY 2009	Number of Employed Clients with DSHS Coverage						Yearly Average per Quarter			
	QUARTER				YEARLY Average per Quarter	Percent of Total Employed Clients	BY HOURS WORKED IN QUARTER			
	1	2	3	4			1 to 261	262 to 455	More than 455	Unknown
All Firms	89,958	95,931	104,437	95,319	96,411	100.0%	57,050	23,556	14,333	1,473
By Industry										
Agriculture (11)	2,675	6,409	9,262	4,011	5,589	5.8%	3,757	987	841	4
Mining (21)	12	22	25	21	20	0.0%	11	5	4	0
Utilities (22)	47	76	71	41	59	0.1%	32	14	14	0
Construction (23)	2,891	2,993	3,268	2,888	3,010	3.1%	1,923	663	414	10
Manufacturing (31-33)	3,438	3,407	4,084	3,901	3,708	3.8%	1,728	967	1,009	3
Wholesale Trade (42)	1,607	1,841	1,973	1,832	1,813	1.9%	861	443	509	1
Retail Trade (44)	16,512	16,033	16,523	18,042	16,778	17.4%	9,169	4,411	3,183	15
Transportation/Warehousing (48)	1,683	1,661	1,698	1,672	1,679	1.7%	863	448	359	8
Information (51)	941	986	925	905	939	1.0%	604	182	144	10
Finance and Insurance (52)	1,346	1,317	1,248	1,218	1,282	1.3%	477	394	402	10
Real Estate (53)	1,720	1,796	1,797	1,699	1,753	1.8%	1,038	388	323	4
Professional/Technical (54)	2,121	1,935	1,747	1,929	1,933	2.0%	1,229	395	303	6
Management (55)	213	199	241	229	221	0.2%	133	63	25	0
Administrative/Waste (56)	7,833	8,071	9,344	8,576	8,456	8.8%	5,739	1,648	1,039	31
Educational Services (61)	3,214	3,216	3,132	3,268	3,208	3.3%	2,587	473	145	3
Health Care, Soc. Assistance (62)	14,791	14,896	15,110	14,943	14,935	15.5%	7,797	4,449	2,678	12
Arts and Entertainment (71)	2,791	3,244	3,586	3,062	3,171	3.3%	2,155	691	317	9
Accommodation and Food (72)	18,844	19,964	20,759	18,585	19,538	20.3%	12,973	5,236	1,312	18
Other Services (81)	5,516	5,847	6,850	6,679	6,223	6.5%	2,741	1,277	972	1,233
Other Government (92)	1,645	1,896	2,702	1,765	2,002	2.1%	1,236	425	341	0
Unknown	118	122	92	53	96	0.1%	0	0	0	96
By Ownership Type										
Public	6,074	6,300	7,162	6,240	6,444	6.7%	4,197	1,301	850	97
Private	83,884	89,631	97,275	89,079	89,967	93.3%	52,853	22,255	13,483	1,376
Unknown	0	0	0	0	0	0.0%	0	0	0	0
By Firm Size										
1-50	35,500	38,076	41,842	38,493	38,478	39.9%	23,527	9,057	4,827	1,067
51-100	7,820	8,761	9,232	8,202	8,504	8.8%	4,951	2,192	1,355	6
101-1000	27,747	29,542	32,906	28,848	29,761	30.9%	17,633	7,325	4,779	24
1001-5000	13,300	13,769	14,947	14,843	14,215	14.7%	8,557	3,745	1,888	25
5000+	5,591	5,783	5,510	4,933	5,454	5.7%	2,382	1,237	1,484	351
Unknown	0	0	0	0	0	0.0%	0	0	0	0



March 2011

Washington State Department of Social and Health Services

DSHS | Employment of Medical Assistance Clients

Research and Data Analysis Division

TABLE 2B.

Employment DSHS Medical Assistance Clients

CY 2009	Number of Employed Clients with DSHS Coverage		Annual Profile		
	YEARLY Average per Quarter	Percent of Total Employed Clients	Average Quarterly Covered Lives Associated with Employed Clients	Annual Months of DSHS Coverage Associated with Employed Clients	Annual DSHS Medical and Mental Health Costs for Associated DSHS Coverage (Estimated)
All Firms	96,411	100.0%	172,498	1,909,403	\$615,493,495
By Industry					
Agriculture (11)	5,589	5.8%	7,648	84,861	\$26,017,313
Mining (21)	20	0.0%	52	577	\$158,364
Utilities (22)	59	0.1%	120	1,295	\$396,357
Construction (23)	3,010	3.1%	6,807	74,395	\$21,197,069
Manufacturing (31-33)	3,708	3.8%	8,010	88,404	\$27,276,338
Wholesale Trade (42)	1,813	1.9%	3,679	40,409	\$12,621,568
Retail Trade (44)	16,778	17.4%	28,243	312,824	\$103,637,392
Transportation/Warehousing (48)	1,679	1.7%	3,969	43,671	\$13,205,546
Information (51)	939	1.0%	1,453	16,009	\$5,512,834
Finance and Insurance (52)	1,282	1.3%	2,609	28,333	\$9,720,462
Real Estate (53)	1,753	1.8%	3,343	36,858	\$12,107,269
Professional/Technical (54)	1,933	2.0%	3,480	38,219	\$12,509,799
Management (55)	221	0.2%	337	3,816	\$1,217,379
Administrative/Waste (56)	8,456	8.8%	16,990	187,451	\$58,867,906
Educational Services (61)	3,208	3.3%	5,804	64,998	\$20,527,338
Health Care, Soc. Assistance (62)	14,935	15.5%	30,422	339,721	\$111,051,323
Arts and Entertainment (71)	3,171	3.3%	5,083	55,766	\$18,892,285
Accommodation and Food (72)	19,538	20.3%	28,337	313,065	\$103,233,872
Other Services (81)	6,223	6.5%	12,268	136,675	\$44,140,440
Other Government (92)	2,002	2.1%	3,589	39,622	\$12,529,221
Unknown	96	0.1%	258	2,434	\$673,419
By Ownership Type					
Public	6,444	6.7%	12,377	137,017	\$43,137,540
Private	89,967	93.3%	160,121	1,772,386	\$572,355,956
Unknown	0	0.0%	0	0	\$0
By Firm Size					
1-50	38,478	39.9%	68,541	758,113	\$240,290,059
51-100	8,504	8.8%	15,010	166,212	\$53,401,080
101-1000	29,761	30.9%	53,236	589,815	\$190,062,469
1001-5000	14,215	14.7%	26,146	289,300	\$95,134,459
5000+	5,454	5.7%	9,566	105,963	\$36,605,428
Unknown	0	0.0%	0	0	\$0



March 2011

Washington State Department of Social and Health Services

DSHS | Employment of Medical Assistance Clients

Research and Data Analysis Division

TABLE 3A.

Employed Non-Client Persons with Dependents with DSHS Medical Coverage

CY 2009	Number of Employed Non-Client Persons with Dependents						Yearly Average per Quarter			
	QUARTER				YEARLY Average per Quarter	Percent of Total Employed Non-Client Persons	BY HOURS WORKED IN QUARTER			
	1	2	3	4			1 to 261	262 to 455	More than 455	Unknown
All Firms	155,343	162,588	167,071	167,866	163,217	100.0%	38,085	46,429	76,956	1,747
By Industry										
Agriculture (11)	13,932	17,355	18,656	16,818	16,690	10.2%	5,076	3,933	7,669	12
Mining (21)	143	140	150	145	145	0.1%	29	44	71	1
Utilities (22)	212	244	227	211	224	0.1%	56	40	128	0
Construction (23)	11,007	11,299	11,604	11,537	11,362	7.0%	3,858	3,403	4,066	35
Manufacturing (31-33)	15,363	15,096	15,592	15,667	15,430	9.5%	1,999	3,671	9,753	7
Wholesale Trade (42)	6,344	6,533	6,524	6,670	6,518	4.0%	875	1,225	4,413	5
Retail Trade (44)	19,084	19,341	19,910	20,645	19,745	12.1%	3,506	5,279	10,946	15
Transportation/Warehousing (48)	4,391	4,423	4,664	4,796	4,569	2.8%	972	1,199	2,373	25
Information (51)	1,432	1,500	1,535	1,550	1,504	0.9%	312	344	841	8
Finance and Insurance (52)	3,416	3,537	3,537	3,600	3,523	2.2%	468	856	2,184	15
Real Estate (53)	3,115	3,178	3,302	3,224	3,205	2.0%	636	689	1,874	6
Professional/Technical (54)	3,588	3,612	3,599	3,765	3,641	2.2%	862	884	1,885	10
Management (55)	217	232	212	207	217	0.1%	37	53	127	0
Administrative/Waste (56)	10,440	10,951	11,355	11,634	11,095	6.8%	3,327	3,081	4,624	63
Educational Services (61)	7,121	7,342	6,516	7,522	7,125	4.4%	3,417	2,359	1,345	4
Health Care, Soc. Assistance (62)	23,525	24,491	24,915	25,126	24,514	15.0%	4,331	7,912	12,261	11
Arts and Entertainment (71)	3,622	3,772	3,865	3,891	3,788	2.3%	919	1,166	1,700	2
Accommodation and Food (72)	16,769	17,366	17,674	17,568	17,344	10.6%	4,745	7,213	5,375	12
Other Services (81)	7,951	8,348	9,408	9,515	8,806	5.4%	2,023	2,358	3,057	1,368
Other Government (92)	3,466	3,642	3,692	3,695	3,624	2.2%	639	719	2,266	1
Unknown	205	186	134	80	151	0.1%	1	1	2	148
By Ownership Type										
Public	13,684	14,017	13,308	14,281	13,823	8.5%	4,124	3,807	5,743	149
Private	141,659	148,571	153,756	153,580	149,392	91.5%	33,961	42,622	71,212	1,598
Unknown	0	0	7	5	3	0.0%	1	1	2	0
By Firm Size										
1-50	63,848	65,153	69,261	71,361	67,406	41.3%	18,567	19,884	27,818	1,137
51-100	14,590	15,725	15,825	16,061	15,550	9.5%	3,138	4,109	8,295	8
101-1000	48,609	51,281	51,549	51,064	50,626	31.0%	10,231	13,650	26,717	28
1001-5000	20,989	22,671	22,768	22,896	22,331	13.7%	5,200	7,189	9,897	45
5000+	7,307	7,758	7,661	6,479	7,301	4.5%	949	1,596	4,227	529
Unknown	0	0	7	5	3	0.0%	1	1	2	0



TABLE 3B.

Employed Non-Client Persons with Dependents with DSHS Medical Coverage

CY 2009	Number of Employed Non-Client Persons with Dependents		Annual Profile		
	YEARLY Average per Quarter	Percent of Total Employed Non-Client Persons	Average Quarterly Covered Lives Associated with Employed Non-Client Persons	Annual Months of DSHS Coverage Associated with Employed Non-Client Persons	Annual DSHS Medical and Mental Health Costs for Associated DSHS Coverage (Estimated)
All Firms	163,217	100.0%	281,197	3,206,714	\$589,984,757
By Industry					
Agriculture (11)	16,690	10.2%	31,251	363,965	\$68,942,640
Mining (21)	145	0.1%	300	3,404	\$634,514
Utilities (22)	224	0.1%	489	5,437	\$1,019,007
Construction (23)	11,362	7.0%	23,008	259,339	\$50,800,156
Manufacturing (31-33)	15,430	9.5%	29,944	341,549	\$63,536,675
Wholesale Trade (42)	6,518	4.0%	12,229	139,269	\$25,873,996
Retail Trade (44)	19,745	12.1%	31,346	357,415	\$66,165,720
Transportation/Warehousing (48)	4,569	2.8%	8,701	98,829	\$18,670,210
Information (51)	1,504	0.9%	2,692	30,083	\$5,601,997
Finance and Insurance (52)	3,523	2.2%	5,901	66,433	\$11,585,050
Real Estate (53)	3,205	2.0%	5,518	62,438	\$11,445,821
Professional/Technical (54)	3,641	2.2%	6,273	69,927	\$12,475,720
Management (55)	217	0.1%	368	4,208	\$760,395
Administrative/Waste (56)	11,095	6.8%	18,660	212,607	\$40,420,101
Educational Services (61)	7,125	4.4%	11,329	129,348	\$22,701,825
Health Care, Soc. Assistance (62)	24,514	15.0%	40,148	457,946	\$79,106,632
Arts and Entertainment (71)	3,788	2.3%	6,082	68,687	\$12,378,154
Accommodation and Food (72)	17,344	10.6%	25,793	295,797	\$54,171,014
Other Services (81)	8,806	5.4%	13,754	157,093	\$28,671,235
Other Government (92)	3,624	2.2%	7,122	79,896	\$14,426,315
Unknown	151	0.1%	292	3,044	\$597,579
By Ownership Type					
Public	13,823	8.5%	24,357	275,972	\$49,057,133
Private	149,392	91.5%	256,833	2,930,671	\$540,916,001
Unknown	3	0.0%	7	71	\$11,624
By Firm Size					
1-50	67,406	41.3%	115,476	1,315,851	\$245,045,531
51-100	15,550	9.5%	27,823	317,120	\$58,594,557
101-1000	50,626	31.0%	88,107	1,005,632	\$183,554,481
1001-5000	22,331	13.7%	37,781	431,005	\$77,780,198
5000+	7,301	4.5%	12,004	137,035	\$24,998,367
Unknown	3	0.0%	7	71	\$11,624



By Firm Tables

ABRIDGED

Employment of Medical Assistance Clients and Persons with
Dependents with DSHS Medical Coverage by Firm:

January and April 2010

NOTE: In the ABRIDGED version, tables, detail is provided for the top 10 firms. For other firms, see the full report available at: www.dshs.wa.gov/rda

Table 4. Rank of Firms by Number of DSHS Medical Clients, High to Low

Rank	Employer	Worksheet Name
1	WAL-MART STORES INC	walmart
2	MCDONALDS CORPORATION	mcdonalds
3	SAFEWAY	safeway
4	THE KROGER CO	kroger
5	YUM! BRANDS INC	yumbrands
6	JACK IN THE BOX	jackinbox
7	ZIRKLE FRUIT COMPANY	zirkle
8	WENDY'S/ARBY'S GROUP INC	wendysarby
9	SEARS HOLDINGS CORPORATION	sears
10	STEMILT GROWERS INC	stemiltgrw
11	TARGET CORPORATION	target
12	RESCARE HOMECARE	rescare
13	SUBWAY RESTAURANTS	subway
14	THE HOME DEPOT	homedepot
15	BURGER KING	burgerking
16	GOODWILL INDUSTRIES INTERNATIONAL	goodwill
17	DINEEQUITY	dineequity
18	J. C. PENNEY COMPANY INC	jcpenny
19	DARDEN RESTAURANTS INC	dardenrest
20	DSHS	dshs
21	STARBUCKS CORPORATION	starbucks
22	SUPERVALU INC	supervalu
23	CONAGRA FOODS INC	conagra
24	BROETJE ORCHARDS	broetje
25	TYSON FOODS INC	tyson
26	MACY'S INC	macys
27	CHELAN FRESH MARKETING	chelanfresh
28	YMCA	ymca
29	LOWE'S COMPANIES INC	lowes
30	COSTCO WHOLESALE CORPORATION	costco
31	MULTICARE	multicare
32	REGIS CORPORATION	regis
33	WALGREEN CO	walgreens
34	CATHOLIC COMMUNITY SERVICES	cathcommserv
35	UNIVERSITY OF WASHINGTON	uw
36	WASHINGTON STATE UNIVERSITY	wsu
37	RED ROBIN	redrobin
38	KAHALA CORPORATION	kahala
39	ABM INDUSTRIES INCORPORATED	abm
40	DENNY'S CORPORATION	dennys
41	WASHINGTON BEEF LLC	wabeef
42	AFFILIATED COMPUTER SERVICES INC	acs
43	ROSS STORES INC	rossdress
44	BERKSHIRE HATHAWAY	berkhath
45	EXPRESS PERSONNEL	expresspers
45	PUYALLUP TRIBE OF INDIANS	puyalluptrb
47	US ARMY	usarmy
48	SHARI'S MANAGEMENT CORPORATION	sharis
49	RAINIER SCHOOL	rainiersch
50	BORTON & SONS INC	bortonsons
51	WASHINGTON FRUIT & PRODUCE	wafruit
52	KNOWLEDGE LEARNING CORPORATION	knowledgelearn

Table 4. Rank of Firms by Number of DSHS Medical Clients, High to Low

Rank	Employer	Worksheet Name
53	EVANS FRUIT COMPANY	evansfruit
54	ADDUS HEALTHCARE INC	addushealth
55	CHOICE HOTELS INTERNATIONAL	choicectl
56	DOLLAR TREE STORES INC	dollartree
57	MCDUGALL & SONS INC	mcdougallsons
58	RITE AID	riteaid
59	THE BLACKSTONE GROUP	blackstone
60	WYNDHAM WORLDWIDE CORPORATION	wyndham
61	SEA MAR COMMUNITY HEALTH CENTERS	seamar
62	RED LION HOTELS CORPORATION	redlionhotels
63	WINCO HOLDINGS INC	winco
64	BARRETT BUSINESS SERVICES	barretbus
65	MUCKLESHOOT INDIAN TRIBE	mucklesheettribe
66	CHESTERFIELD SERVICES	chesterfield
67	7-ELEVEN INC	7eleven
68	BANK OF AMERICA	bankofam
69	YAKIMA VALLEY FARM WORKERS CLINIC	yvfwc
70	NORDSTROM INC	nordstrom
71	U.S. BANCORP	usbank
72	WELLS FARGO & CO	wellsfargo
73	INTERCONTINENTAL HOTELS GROUP	ihg
74	DOVEX FRUIT COMPANY	dovexfruit
74	TJX COMPANIES INC	tjx
74	US POSTAL SERVICE	usps
77	BEST WESTERN INTERNATIONAL INC	bestwestern
78	UNITED PARCEL SERVICE INC	ups
79	SERVICEMASTER	servicemaster
80	CHEVRON CORPORATION	chevron
81	BLUE BIRD INC	bluebird
82	KELLY SERVICES INC	kellyserv
83	WEST CORPORATION	westcorp
84	YAKAMA NATION	yakamanation
85	SPOKANE SCHOOL DISTRICT	spokaneschl
86	TRUEBLUE INC	trueblue
87	PAPA MURPHY'S INTERNATIONAL INC	papamurphys
88	DOMINO'S PIZZA INC	dominospizza
89	TACOMA SCHOOL DISTRICT	tacomaschl
90	KALISPEL TRIBE OF INDIANS	kalispeltrb
91	THE SEATTLE TIMES COMPANY	seattletimes
92	BOEING	boeing
93	TULALIP TRIBES	tulaliptrb
94	KOHL'S	kohls
95	FIESTA FOODS	fiestafoods
96	MONSON FRUIT COMPANY	monsonfruit
97	GROUP HEALTH COOPERATIVE	grouphealth
98	SEATTLE SCHOOL DISTRICT	seattleschl
99	SACRED HEART MEDICAL CENTER	sacredheartmed
100	FEDEX CORPORATION	fedex
101	VALUE VILLAGE	valuevillage
102	NORTHWEST CENTER INDUSTRIES	northwestctrind
103	ALLEGIS GROUP	allegis
104	GREAT CLIPS INC	greatclips

Table 4. Rank of Firms by Number of DSHS Medical Clients, High to Low

Rank	Employer	Worksheet Name
104	KOREAN WOMEN'S ASSOCIATION	kwa
106	O'REILLY AUTO PARTS	oreilly
106	WYCKOFF FARMS INC	wyckoffarms
108	J. R. SIMPLOT COMPANY	jrsmplot
109	ST JOSEPH HOSPITAL	stjosephosp
110	SALVATION ARMY	salvationarmy
111	AMICABLE HEALTH CARE	amicablehealth
111	AUVIL FRUIT COMPANY	auvilfruit
113	THE FLAT TOP RANCH	lattopranch
113	WASHINGTON STATE MIGRANT COUNCIL	wsmc
113	YAKIMA SCHOOL DISTRICT	yakimaschl
116	ALASKA AIR GROUP	alaskaair
117	VALLEY FRUIT	valleyfruit
118	LIFE CARE CENTERS OF AMERICA	lifecarectr
119	CORPORATION FOR NATIONAL AND COMMUNITY SERVICE	corpnatlsvc
120	CRUNCH PAK	crunchpak
121	GILBERT ORCHARDS	gilberorch
122	AMBITIONS	ambitions
123	HAGGEN FOOD & PHARMACY	haggens
123	PROVIDENCE HEALTH	providencehlth
125	US NAVY	usnavy
126	MARRIOTT INTERNATIONAL INC	marriott
127	AZTECA MEXICAN RESTAURANT	azteca
127	PASCO SCHOOL DISTRICT	pascoschl
129	MATSON FRUIT COMPANY	matsonfruit
130	EVERGREEN SCHOOL DISTRICT	evergreenschl
131	JIFFY LUBE	jiffylube
132	COMCAST	comcast
132	FIRSTGROUP PLC	firstgrp
132	SEATTLE GOODWILL	seattlegoodwill
135	BEST BUY CO INC	bestbuy
136	GROCERY OUTLET INC	groceryoutlet
137	SQUAXIN ISLAND INDIAN TRIBE	squaxintrb
137	THE GAP INCORPORATED	gap
139	CITY OF SEATTLE	cityseattle
140	SECURITAS AB	securitas
140	YWCA	ywca
142	CUSTOM APPLE PACKERS INC	customapple
143	SUNRISE SERVICES	sunriseserv
144	COMPASS GROUP PLC	compassgrp
145	SODEXO INC	sodexo
146	CHEHALIS TRIBE	chehalistrb
147	BP PRODUCTS NORTH AMERICA INC	bp
147	LES SCHWAB	lesschwab
147	ROCKWOOD CLINIC	rockwoodclin
150	YOKE'S FRESH MARKETS	yokes
151	OLYMPIC FRUIT	olympicfruit
152	EPIC	epic
152	KING COUNTY	kingco
154	SHOPKO	shopko
155	DOUGLAS FRUIT	douglasfruit
156	VIRGINIA MASON HOSPITAL	virginiamason

Table 4. Rank of Firms by Number of DSHS Medical Clients, High to Low

Rank	Employer	Worksheet Name
156	WESTPORT SHIPYARD	westportship
158	CPC INTERNATIONAL	cpcinter
159	NATIONAL FOOD CORP	nationalfood
160	QUIZNO'S SUB	quiznos
161	PRIDE PACKING	pridepack
162	CENTERFORCE	centerforce
162	OLD COUNTRY BUFFET	oldcountrybuf
164	MANPOWER INC	manpower
165	ER SOLUTIONS	ersolutions
166	SYKES ENTERPRISES	sykes
167	FOSTER FARMS	fosterfarms
168	BIG LOTS INC	biglots
168	HOME CARE OF WASHINGTON	homecarewa
168	MERRILL GARDENS	merrillgardens
171	SERVICE ALTERNATIVES	servicealternatives
172	TACOMA GOODWILL	tacomagoodwill
173	MICHAEL'S STORES INC	michaelsstores
174	SL START	slstart
174	ST VINCENT DE PAUL	stvincentdepaul
176	TOYS 'R' US	toysrus
177	H&R BLOCK	hrblock
177	WASHINGTON POTATO	wapotato
179	KENT SCHOOL DISTRICT	kentschl
179	TRIDENT SEAFOODS	tridentseafoods
181	JPMORGAN CHASE & CO	jpmorganchase
181	LITTLE CAESARS PIZZA	littlecaesars
183	GREAT WOLF LODGE	greatwolf
183	VALLEY MEDICAL CENTER	valleymedctr
185	COMMUNITY HEALTH CARE	commhlthcare
186	DAVENPORT HOTEL	davenporthot
187	VISITING ANGELS	visitingangels
188	BAKER PRODUCE INC	bakerproduce
188	YELLOW CAB	yellowcab
190	YAKIMA VALLEY MEMORIAL HOSPITAL	yakimavalhosp
191	BETHEL SCHOOL DISTRICT	bethelschl
191	NW MANAGEMENT	nwmanage
191	PANDA EXPRESS	pandaex
194	OUTBACK STEAKHOUSE	outbacksteak
194	SNOKIST GROWERS	snokist
194	SPOKANE TRIBE OF INDIAN	spokanetribe
197	PETSMART	petsmart
198	BENEFICIAL IN-HOME CARE	beneficialinhome
198	PETCO	petco
200	CLARK COLLEGE	clarkcol
201	OFFICE DEPOT	officedepot
202	COLUMBIA FRUIT PACKERS INC	columbiafruit
202	DEPT OF DEFENSE	deptdef
202	TELETECH HOLDINGS INC	teletech
202	VANCOUVER SCHOOL DISTRICT	vancouverchl
206	VANCOUVER CLINIC	vancouverclin
207	KIDS COUNTRY	kidscountry
207	TEREX CORPORATION	terex

Table 4. Rank of Firms by Number of DSHS Medical Clients, High to Low

Rank	Employer	Worksheet Name
209	BLUE STAR GROWERS	bluestar
209	PITNEY BOWES	pitneybowes
211	AVALON HEALTH CARE	avalonhealth
212	NISQUALLY INDIAN TRIBE	nisquallytrb
213	ACCOR HOTELS	accor
213	PAPA JOHNS	papajohns
215	ACE HARDWARE CORPORATION	acehard
215	BLOCKBUSTER INC	blockbuster
215	GENE JUAREZ SALONS	genejuarez
215	TREE TOP	treetop
219	ZIP'S DRIVE IN	zips
220	ARAMARK	aramark
220	LIQUIDATION OUTLET INC	liquidationoutlet
222	CKE RESTAURANTS INC	ckerest
223	CENTRAL WASHINGTON HOSPITAL	ctrwahosp
223	KENNEWICK SCHOOL DISTRICT	kennewickschl
223	VOLT INFORMATION SCIENCES INC	volt
223	WASHINGTON BULB	wabulb
227	CUSTOM ORCHARDS	customorch
227	HIGHLINE SCHOOL DISTRICT	highlineschl
229	WORK OPPORTUNITIES	workopp
230	SKILS'KIN	skilskin
231	BOYS & GIRLS CLUB	boysgirlsclub
232	EAGLE HEALTHCARE	eaglehealth
232	MOSES LAKE SCHOOL DISTRICT	moseslakeschl
232	NORTHWEST HORTICULTURE	nwhort
235	BYBEE FOODS	bybee
235	PROVIDENCE	providence
237	APPLE KING	appleking
238	DRAPER VALLEY FARMS	drapervalley
239	NORTHERN FRUIT	nofruit
239	THE CHEESECAKE FACTORY	cheesecakefact
241	MONEYTREE	moneytree
242	MORNINGSIDE	morningside
242	SKY CHEFS	skychefs
242	SOUTHWEST WASHINGTON MEDICAL CTR	swwamedctr
242	YAKIMA COUNTY	yakimaco
246	CHIAWANA ORCHARDS	chiawanaorch
246	PAYLESS SHOE SOURCE	paylessshoe
248	BARTELL DRUGS	bartelldrug
248	COLUMBIA REACH PACK	columbiareach
248	CONGDON ORCHARDS	congdonorch
248	ROUNDTABLE PIZZA	roundtable
248	SKAGIT VALLEY HOSPITAL	skagitvalleyhosp
248	SUNNYSIDE SCHOOL DISTRICT	sunnysideschl
254	COMMUNITY LIVING	commliv
254	EDMONDS SCHOOL DISTRICT	edmondsschl
254	HARBORVIEW MEDICAL CENTER	harborviewmed
254	RENTON SCHOOL DISTRICT	rentonschl
254	ROYAL DUTCH SHELL PLC	shell
259	DOUBLE S ORCHARDS	dblsorch
259	MAXIM HEALTH CARE	maximhealth

Table 4. Rank of Firms by Number of DSHS Medical Clients, High to Low

Rank	Employer	Worksheet Name
259	QUINAULT BEACH RESORT	quinaultbeachres
262	ELITE HOME CARE	elitehome
263	KADLEC HOSPITAL	kadlec
263	ORONDO FRUIT	orondofruit
263	SILVER DOLLAR CASINO	silverdollarcas
266	ELMVIEW	elmview
267	HOLLYWOOD VIDEO	hollywoodvid
267	RADIO SHACK	radioshack
267	SELECT STAFFING	selectstaff
270	PIONEER HUMAN SERVICES	pioneerhumanserv
271	AT&T	att
271	EASTERDAY FARMS	easterdayfarms
271	FEDERAL WAY SCHOOL DISTRICT	federalwayschl
271	REMEDY	remedy
275	KEY BANK	keybank
275	SWEDISH HEALTH SERVICES	swedishhealth
275	THE HOLLAND INC	holland
278	DAVITA INC	davita
278	OTHELLO SCHOOL DISTRICT	othelloschl
280	COLVILLE TRIBE	colvilletribe
280	MC CAIN FOODS	mccainfoods
282	PUYALLUP SCHOOL DISTRICT	puyallupschl
283	LARSON FRUIT	larsonfruit
284	VALLEY ROZ	valleyroz
285	AUTO ZONE	autozone
285	ELITE INTERNATIONAL	eliteintl
285	QUINAULT INDIAN NATION	quinaultindnat
288	AMAZON.COM	amazon
288	AT WORK	atwork
288	STADELMAN FRUIT	stadelmanfruit
291	HOLY FAMILY HOSPITAL	holyfamhosp
291	IVARS	ivars
291	WAREHOUSE DEMO	warehousedemo
294	ALLAN BROTHERS	allanbros
294	CITY OF SPOKANE	cityspokane
294	ROSAUERS SUPERMARKETS	rosauers
294	STATE FARM INSURANCE	statefarmins
298	FAMOUS DAVES	famousdaves
298	LA FITNESS	lafitness
298	STERLING SAVINGS BANK	sterlingbank
301	UNDERWOOD FRUIT	underwoodfruit
302	CHIEF ORCHARDS	chieforch
302	MASSAGE ENVY	massageenvy
302	NATIONAL GUARD	natlguard
302	OLYMPIC COLLEGE	olympiccol
302	TACO DEL MAR	tacodelmar
307	FIRCREST SCHOOL	fircrestschl
307	MANOR CARE	manorcare
307	QUINCY FOODS	quincyfoods
310	CHUCK E. CHEESE'S	chuckecheese
310	MENZIES AVIATION	menziesaviation
310	PACIFIC SEAFOOD	pacseafod

Table 4. Rank of Firms by Number of DSHS Medical Clients, High to Low

Rank	Employer	Worksheet Name
310	SKCAC INDUSTRIES	skcac
310	WENATCHEE SCHOOL DISTRICT	wenatcheeschl
315	BURLINGTON COAT FACTORY	burlingtoncoat
315	REGAL CINEMAS	regalcinemas
315	ROY FARMS	royfarms
315	SENIOR LIFE RESOURCES	sriferes
315	STAPLES INC	staples
320	AUBURN SCHOOL DISTRICT	auburnschl
320	BI-MART	bimart
320	GOLD DIGGER APPLES	golddiggerappl
320	SNOQUALMIE CASINO	snoqualmiecasi
320	SPHERION (ATLANTIC ENTERPRISES LLC)	spherion
325	BROWN & COLE STORES	browncole
325	SCHWARTZ BROTHERS	schwartzbros
327	AUTOGRILL SPA	autogrill
328	CENTRAL VALLEY SCHOOL DISTRICT	ctrvalleyschl
328	WINDERMERE REAL ESTATE	windermere
330	CRANE & CRANE	cranecrane
330	EMERALD CITY PIZZA	emeraldcitypizza
330	GREAT AMERICAN CASINO	greatamcas
330	PEACE HEALTH	peacehealth
334	AVON	avon
334	PRICE COLD STORAGE	pricecoldstor
336	COLUMBIA COLSTOR	columbiacolstor
336	STARWOOD HOTELS & RESORTS WORLDWIDE INC	starwood
336	THE CHILDREN'S PLACE	childrensplace
336	VOLUNTEERS OF AMERICA	volunteersam
340	ALLIED BARTON SECURITY	alliedbarton
340	CARDINAL GLASS	cardglass
340	CLOVER PARK SCHOOL DISTRICT	cloverparkschl
340	MAID BRIGADE	maidbrigade
340	VARSITY CONTRACTORS	varsitycontr
345	CRAZY MOOSE CASINO	crazymoosecas
345	SKAGIT GARDENS	skagitgard
345	SONIC	sonic
345	THE SUQUAMISH TRIBE	suquamishtrb
345	VERIZON WIRELESS	verizon
345	WENATCHEE VALLEY MEDICAL CENTER	wenatcheevalmedctr
351	JOANN FABRICS	joannfab
351	NATIONAL FROZEN FOODS	nationalfrozenfood
353	SPOKESMAN REVIEW	spokesmanrev
354	DEPT OF CORRECTIONS	deptcorr
354	GREEN ACRE FARMS INC	greenacres
354	LUMBERMENS	lumbermans
354	SUNRISE SENIOR LIVING	sunriserliving
358	FAMILY HEALTH CENTER	famhlthctr
358	SUNRISE STAFFING	sunrisestaff
358	WASTE CONNECTIONS	wasteconn
358	WASTE MANAGEMENT	wastemanage
362	MAD ANTHONY'S INC	madanthonys
362	SUN PACIFIC ENERGY	sunpacificenerg
364	COLUMBIA INDUSTRIES	columbiaind

Table 4. Rank of Firms by Number of DSHS Medical Clients, High to Low

Rank	Employer	Worksheet Name
364	FARMER'S INSURANCE	farmersins
364	REI	rei
364	SKAGIT VALLEY COLLEGE	skagitvalleycol
368	DIRECT TV	directtv
368	KING FUJI	kingfuji
368	NORTHWEST HOSPITAL	nwhosp
368	RIVERSTONE OPERATING CO	riverstoneopco
368	T MOBILE	tmobile
368	TRAVIS INDUSTRIES	travisind
374	DAL GLOBAL SERVICES	dalglobal
374	YAKIMA FRUIT AND COLD STORAGE	yakimafruit
376	CARLYLE INC	carlyleinc
376	LUMMI NATION	lummination
376	NORTHSHORE SCHOOL DISTRICT	northshoreschl
376	OCEAN BEAUTY SEAFOODS	oceanbeauty
376	WEST VALLEY SCHOOL DISTRICT	wvalleyschl
376	WHOLE FOODS	wholefoods
382	STANDARD PARKING	standardpark
382	TRANS OCEAN PRODUCTS	transocean
384	CRISTA MINISTRIES	cristamin
384	NOOKSACK INDIAN TRIBE	nooksacktrb
384	PESHASTIN HI-UP	peshastinhiup
384	TWIN CITY FOODS INC	twincityfoods
388	EVERGREEN HEALTH CARE	evergreenhealth
388	HIGHLAND FRUIT	highlandfruit
388	NAPA AUTO PARTS	napaauto
388	OVERLAKE HOSPITAL	overlakehosp
388	PROVIDENT HORIZON GROUP	provhorizon
388	YAKIMA REGIONAL HOSPITAL	yakimareghosp
394	COMPASS ONE LLC	compassone
394	DEPT OF TRANSPORTATION	depttrans
394	MANSON GROWERS COOPERATIVE	mansongrow
394	MAZATLAN RESTAURANT	mazatlanrest
394	PUERTO VALLARTA	puertovall
394	RANDSTAND	randstand
394	US CENSUS BUREAU	uscensus
401	CHIPOTLE MEXICAN GRILL	chipotlemexgrill
401	ELDORADO STONE LLC	eldoradostone
401	MINI SKOOL	miniskool
401	VADIS NORTHWEST	vadisnw
405	ANGEL OF THE WINDS	angelwinds
405	DOUBLE DIAMOND	dbldiamond
405	HUNTWOOD INDUSTRIES	huntwoodind
408	24 HOUR FITNESS	24hrfit
408	AAFES	aafes
408	CONOCO PHILLIPS	conocophl
408	NORTHSTAR RESTAURANTS INC	northstarrest
408	NORTHWEST STAFFING	nwstaff
408	PREMERA BLUE CROSS	premerablue
414	ADVANCE AMERICA	advanceam
414	BLACK ANGUS	blackangus
414	DURHAM SCHOOL SERVICES	durhamschlsvcs

Table 4. Rank of Firms by Number of DSHS Medical Clients, High to Low

Rank	Employer	Worksheet Name
414	EVERETT CLINIC	everettclinic
414	PIERCE COLLEGE	piercecol
419	AMERICAN MANAGEMENT SERVICES	ammanagement
419	EVERETT SCHOOL DISTRICT	everettschl
419	SAKUMA BROTHERS FARMS	sakumabros
422	HARRISON HOSPITAL	harrisonhosp
422	MILGARD MANUFACTURING	milgard
422	PLANNED PARENTHOOD	plannedparent
422	ROBERT HALF INTERNATIONAL	roberthalf
422	ST JOHNS MEDICAL CENTER	stjohnsmed
422	TRAVIS PATTERN	travispatt
428	CLAIM JUMPER	claimjumper
428	RENT A CENTER	rentacenter
430	ST JOSEPH MEDICAL CENTER	stjosephmedctr
431	MEMORIAL HOSPITAL	memorialhosp
431	OBERTO SAUSAGE CO	oberto
431	RGIS INVENTORY	rgisinv
431	TESORO CORPORATION	tesoro
431	VEOLIA TRANSPORTATION	veoliatransp
431	WILLAMETTE DENTAL	willamettedental
437	ADECCO	adecco
437	CM HOLTZINGER	cmholtz
437	HEALTHPOINT	healthpoint
437	HIGHLINE MEDICAL CENTER	highlinemedctr
437	RICHLAND SCHOOL DISTRICT	richlandschl
437	STRAND ORCHARDS	strandorch
437	TAQUERIA EL RINCONSITO	taqelrinconsito
437	ZIP TRIP	ziptrip
445	LINCARE	lincare
445	PROLOGIX DISTRIBUTION	prologix
445	QUINCY SCHOOL DISTRICT	quincyschldist
445	UPPER SKAGIT INDIAN TRIBE	upperskagitrb
449	BIG 5 SPORTING GOODS	big5sport
449	HIGHLINE COMMUNITY COLLEGE	highlinecc
449	MMP ORCHARDS	mmporch
449	SHILO INNS	shiloinn
453	ARMY NATIONAL GUARD	armynatlg
453	COWICHE GROWERS	cowichegrow
453	GRANDVIEW SCHOOL DISTRICT	grandviewschl
453	KENNEWICK GENERAL HOSPITAL	kennewickhosp
453	LABOR WORKS	laborworks
453	PAML	paml
453	ROCHE FRUIT	rochefruit
460	AGTOPROF INC	agtoprof
460	EAST VALLEY SCHOOL DISTRICT	eastvalleyschldist
460	EL SOMBRERO	elsombrero
460	SALLY'S BEAUTY SUPPLY	sallysbeauty
460	SHELTON SCHOOL DISTRICT	sheltonschl
460	TACOMA COMMUNITY COLLEGE	tacomacc
460	WILLOW DRIVE NURSERY	willowdrnurs
467	AGRIMACS	agrimacs
467	CENTRALIA COLLEGE	centraliacol

Table 4. Rank of Firms by Number of DSHS Medical Clients, High to Low

Rank	Employer	Worksheet Name
467	COAST SEAFOODS	coastseafoods
467	COLUMBIA DISTRIBUTING	columbiadistr
467	EVERGREEN HOSPITAL	evergreenhosp
467	KYLE MATHISON ORCHARDS	kylemathisonorch
467	OFFICE MAX	officemax
467	RESERS FINE FOODS	resers
467	TOPPENISH SCHOOL DISTRICT	toppenishschl
467	TRIPLE B CORP	tripleb
467	VAN WELL NURSERY	vanwellnurs
467	WESTERN STATE HOSPITAL	wsh
467	ZUMIEZ INC	zumiez
480	BED BATH & BEYOND	bedbath
480	FASHION LADY BUG	fashionladybug
482	BATTLE GROUND SCHOOL DISTRICT	battlegroundschl
482	CENTERPLATE	centerplate
482	CENTRAL WASHINGTON UNIVERSITY	cwu
482	HERTZ	hertz
482	TAYLOR ORCHARDS LLC	taylororchards
487	AMTECH CORPORATION	amtech
487	CBHA	cbha
487	LIBERTY DAIRY	libertydairy
487	POLYCLINIC	polyclinic
487	YAKIMA VALLEY ORCHARDS	yakimavalorch
492	BATH AND BODY WORKS	bathbodyworks
492	BELLINGHAM SCHOOL DISTRICT	bellinghamschl
492	GOLDEN CORRAL	goldencorral
492	LUTHERAN COMMUNITY SERVICES	luthercommserv
492	SEATTLE GOURMET FOODS	seattlegourmet
492	VA HOSPITAL	vahosp
498	LA PETITE ACADEMY	lapetiteacad
498	OSTROM FARMS	ostromfarms
498	RESTAURANTS UNLIMITED	restaurunlmtd
501	JOHN L SCOTT	johnlscott
501	LA HACIENDA	lahacienda
501	STITA TAXI	stitataxi
501	SUQUAMISH TRIBE	suquamishtribe
501	THE RAM	theram
506	BANNER BANK	bannerbank
506	BELLEVUE SCHOOL DISTRICT	bellevueschl
506	HERITAGE UNIVERSITY	heritageuniv
506	ISLAND HOSPITAL	islandhosp
506	SCAFCO CORPORATION	scafco
511	AVIS RENT A CAR	avis
511	BRIGHT HORIZONS	brighthor
511	C & O NURSERY	conurs
511	COCA COLA	cocacola
511	OIL CAN HENRY'S	oilcanhenrys
511	PROVAIL	provail
511	REGENCE BLUE SHIELD	regenceblueshield
511	SMITH GARDENS	smithgard
519	CHILDREN'S HOME SOCIETY	childrenshome
519	EAKIN FRUIT	eakinfruit

Table 4. Rank of Firms by Number of DSHS Medical Clients, High to Low

Rank	Employer	Worksheet Name
519	EASTERN WASHINGTON UNIVERSITY	ewu
519	LAKELAND VILLAGE	lakelandvil
523	CABELAS	cabelas
523	CONFEDERATED TRIBES	confederatedtribes
523	EMERALD CARE	emeraldcare
523	FANTASTIC SAM'S	fantasticsams
523	ICON LLC	iconllc
523	IRONHORSE CASINO	ironhorsecas
523	TERRA STAFFING	terrastaff
523	YAKIMA NEIGHBORHOOD HEALTH	yakimaneighhlth
531	ADVANTAGE IQ	advantageiq
531	ALLEGIANCE STAFFING	allegiancestaff
531	BUZZ INN	buzzinn
531	CHARLIES PRODUCE	charliesprod
531	CHRISTINE ALEXANDER INC	chrisalex
531	KITSAP COMMUNITY RESOURCES	kitsapcommres
531	NEIGHBORCARE HEALTH	neighborcare
531	ORANGE CAB	orangecab
531	SMART TALENT	smar்த்தalent
531	WCAP	wcap
531	WESTERN WASHINGTON UNIVERSITY	wwu
542	CASCADIAN BUILDING	cascadianbldg
542	FRANKLIN PIERCE SCHOOL DISTRICT	franklinpierceschl
542	RADER FARMS	raderfarms
542	ROMAN CASINO	romancasino
542	SOUND FAMILY MEDICINE	soundfammed
542	STARPLEX	starplex
542	YAKIMA VALLEY COMMUNITY COLLEGE	yvcc
549	CHILDRENS VILLAGE	childrensvill
549	FIRST AID ONLY	firstaidonly
549	KINDRED NURSING CENTERS	kindrednurs
549	NUTRITION NOW	nutritionnow
549	RIVERSIDE CASINO	riversidecasino
549	ROYAL PARK CARE CENTER	royalparkcare
549	RPM	rpm
549	SENIOR SERVICES	seniorsvcs
557	CHARTER COMMUNICATIONS	chartercomm
557	COMMAND CENTER INC	commandctr
557	EMPLOYER'S OVERLOAD	employersover
557	LA CLINICA	laclinica
557	MUCHAS GRACIAS	muchasgracias
557	MUKILTEO SCHOOL DISTRICT	mukilteoschl
557	RESIDENTIAL RESOURCES	resresources
557	SPOKANE PRODUCE	spokaneprod
557	ST FRANCIS HOSPITAL	stfrancishosp
557	SWIFT TRANSPORTATION	swifttrans
557	TRIUMPH TREATMENT	triumphtx
568	CCI	cci
568	EDMONDS COMMUNITY COLLEGE	edmondsc
568	PERSONNEL SOURCE	personnelsource
568	WALLA WALLA SCHOOL DISTRICT	wallawallaschl
568	WORLD VISION	worldvision

Table 4. Rank of Firms by Number of DSHS Medical Clients, High to Low

Rank	Employer	Worksheet Name
573	ANDERSON HAY & GRAIN CO	andersonhay
573	BROOKDALE SENIOR LIVING	brookdalesrlvng
573	CENTRAL WA COMP MENTAL HEALTH	ctrwamntlhlth
573	MAKAH TRIBAL COUNCIL	makahtrb
573	MT ADAMS ORCHARDS	mtadamsorch
573	PENGUIN WINDOWS	penguinwindows
573	RURAL RESOURCES	ruralres
580	ACE CASH EXPRESS	acecash
580	CIRCLE K	circlek
580	COMMUNITY ACTION	communityaction
580	INLAND IMAGING	inlandimg
580	SPOKANE MENTAL HEALTH	spokanemntlhlth
580	TAYLOR RESOURCES INC	taylorresources
586	COLUMBIA BASIN HEALTH	columbiabashlth
586	OXFORD SUITES	oxfordsuites
586	TEUFEL NURSERY INC	teufelnurs
586	WAPATO SCHOOL DISTRICT	wapatoschl
586	WASHINGTON CRAB	wacrab
591	BYBEE PRODUCE LLC	bybeeproduce
591	CONRAD ORCHARDS	conradorch
591	CROTHALL HEALTHCARE INC	crothallhealthcare
591	ESD 113	esd113
591	LONGVIEW SCHOOL DISTRICT	longviewschl
591	PUBLIC STORAGE	publicstorage
597	GONZAGA UNIVERSITY	gonzagau
597	PACE STAFFING NETWORK	pacestaff
599	CHILDREN'S HOSPITAL	childrenshosp
599	FIVE D FARMS	fivedfarms
599	HARMONY HOUSE	harmonyhouse
599	SENSKE	senske
599	WAFERTECH	wafertech
604	ANDERSEN DAIRY	andersendairy
604	CHEWELAH CASINO	chewelahcas
604	COLONIAL VISTA	colonialvista
604	WIS INTERNATIONAL	wisintl
608	GENIE MANUFACTURING	geniemanuf
608	LANDMARK CARE CENTER	landmarkcarectr
608	LIBERTY COUNTRY PLACE	libertycoplace
608	OCEAN GOLD	oceangold
608	TUMWATER SCHOOL DISTRICT	tumwaterschl
613	KELLER WILLIAMS REALTY	kellerwilliams
613	THE CLEANING AUTHORITY	cleanauth
613	TOTAL CARE	totalcare
613	YAKAMA FOREST PRODUCTS	yakamaforest
617	MAKSU INC	maksu
617	WEYERHAEUSER COMPANY LIMITED	weyerhauser
619	AIR SERV CORP	airserv
619	INDEPENDENT FOOD	independentfood
619	J&B ORCHARDS	jborch
619	KERSHAW SUNNYSIDE RANCH INC	kershawsunnyside
623	BECU	becu
623	NORTHWEST AIRLINES	nwairlines

Table 4. Rank of Firms by Number of DSHS Medical Clients, High to Low

Rank	Employer	Worksheet Name
623	PROVIDENCE HOSPITAL	providencehost
623	SUMMIT DRYWALL INC	summitdrywall
623	WESTERN MATERIALS	westernmater
628	BOISE CASCADE	boisecasc
628	CHECKMATE	checkmate
628	COLUMBIA BASIN NURSERY	columbiabasinnurs
631	BECHTEL	bechtel
631	OORD DAIRY	oorddairy
631	PAWN X-CHANGE	pawnxchg
631	UNION GOSPEL MISSION	uniongospelmission
635	FRITO-LAY	fritolay
635	LIFE FORCE SERVICES	lifeforcesvcs
635	PRINCE TELECOM INC	princetele
635	SPOKANE INDUSTRIES	spokaneind
639	EDWARD JONES	edwardjones
639	NEIGHBORHOOD HOUSE	neighborhouse
639	PUGET SOUND NAVAL SHIPYARD	pugetsoundnaval
642	ARTHUR J DENHOED INC	denhoed
642	BUILDER SERVICES GROUP	bldersvcgrp
642	DAPC	DAPC
642	GREAT FLOORS	greatfloors
642	SAMARITAN HOSPITAL	samaritanhosp
642	THE REGENCE GROUP	regencegroup
642	VALLEY MANUFACTURED HOUSING	valleymanuf
649	ASHLEY GARDENS	ashleygardens
649	EMPLOYMENT SECURITY DEPT	esd
649	IMS	ims
649	INTERNATIONAL PAPER	intlpaper
649	OPPORTUNITY COUNCIL	opportunitycouncil
649	ORCHARD PARK	orchardpark
655	ROYAL TURF FARMS	royalturffarms
656	GIRARD WOOD PRODUCTS	girardwood
657	MARYSVILLE SCHOOL DISTRICT	marysvilleschl
658	LYNDEN DOOR INC	lyndendoor
658	PRAIRIE ELECTRIC	prairieelec
658	STERLING INTERNATIONAL	sterlingintl
661	D & L FOUNDRY	dlfoundry
662	BROADWAY CAB	broadwaycab
662	VALLEY SCHOOL DISTRICT	valleyschldist
664	YOU & I CONSTRUCTION	you&iconstr
665	JACKSON HEWITT	jacksonhewitt
666	P&R CONSTRUCTION	prconstr
667	HALME CONSTRUCTION	halmeconstr
668	ROTSCHY INC	rotschy

0. WASHINGTON STATE ROLL-UP

Clients or persons with dependents with DSHS medical coverage, by type of DSHS coverage

Associated DSHS medical clients and estimated medical and mental health expenditures

PREPARED BY: DSHS Research and Data Analysis Division, March 2011

DSHS employed clients and their DSHS-covered dependents

	January 2010	April 2010
Number of Employed Clients	76,919	73,476
Number Employed 0-91 Days with Firm	9,254	10,289
Number Employed 92-365 Days with Firm	28,835	22,419
Number Employed 366+ Days with Firm	38,830	40,768
Associated DSHS Medical Clients	141,448	135,425
Family Medical	100,500	97,544
Children's Medical and SCHIP	17,394	15,978
Pregnant Women	11,585	10,526
Persons with Disabilities	10,485	9,959
Other Coverage	1,484	1,418
Monthly Medical and MH Expenditures - All Funds	\$46,590,299	\$44,230,977
General Fund-State	\$17,545,174	\$16,645,863
General Fund-Federal	\$29,037,045	\$27,577,491
Health Services Account	\$8,080	\$7,623

Non-client persons with DSHS-covered dependents

	January 2010	April 2010
Number of Employed Persons	187,947	187,032
Number Employed 0-91 Days with Firm	4,882	7,886
Number Employed 92-365 Days with Firm	39,689	28,354
Number Employed 366+ Days with Firm	143,376	150,792
Associated DSHS Medical Clients	330,750	328,655
Family Medical	12,846	13,411
Children's Medical and SCHIP	308,795	306,815
Pregnant Women	7,584	7,022
Persons with Disabilities	1,271	1,153
Other Coverage	254	254
Monthly Medical and MH Expenditures - All Funds	\$60,299,975	\$59,528,025
General Fund-State	\$22,737,611	\$22,441,070
General Fund-Federal	\$37,561,251	\$37,085,953
Health Services Account	\$1,114	\$1,002

TOTAL

	January 2010	April 2010
Number of Employed Clients/Persons	264,866	260,508
Number Employed 0-91 Days with Firm	14,136	18,175
Number Employed 92-365 Days with Firm	68,524	50,773
Number Employed 366+ Days with Firm	182,206	191,560
Associated DSHS Medical Clients	472,198	464,080
Family Medical	113,346	110,955
Children's Medical and SCHIP	326,189	322,793
Pregnant Women	19,169	17,548
Persons with Disabilities	11,756	11,112
Other Coverage	1,738	1,672
Monthly Medical and MH Expenditures - All Funds	\$106,890,275	\$103,759,002
General Fund-State	\$40,282,785	\$39,086,933
General Fund-Federal	\$66,598,296	\$64,663,444
Health Services Account	\$9,194	\$8,625

DATA SOURCES: This report is based on the analysis of Automated Client Eligibility System (ACES) employer name data linked to Medicaid Management Information System eligibility data. ACES employer name information does not permit the identification of separately owned franchises operating under the same business name. The employer name information used in this report is self-reported; it is not a required element of the application for public assistance and is not independently verified by DSHS.

1. WAL-MART STORES INC

Clients or persons with dependents with DSHS medical coverage, by type of DSHS coverage

Associated DSHS medical clients and estimated medical and mental health expenditures

PREPARED BY: DSHS Research and Data Analysis Division, March 2011

DSHS employed clients and their DSHS-covered dependents

	January 2010	April 2010
Number of Employed Clients	1,067	945
Number Employed 0-91 Days with Firm	150	74
Number Employed 92-365 Days with Firm	361	340
Number Employed 366+ Days with Firm	556	531
Associated DSHS Medical Clients	2,114	1,951
Family Medical	1,487	1,401
Children's Medical and SCHIP	274	240
Pregnant Women	197	167
Persons with Disabilities	150	135
Other Coverage	6	8
Monthly Medical and MH Expenditures - All Funds	\$704,699	\$641,872
General Fund-State	\$261,702	\$238,096
General Fund-Federal	\$442,885	\$403,676
Health Services Account	\$112	\$100

Non-client persons with DSHS-covered dependents

	January 2010	April 2010
Number of Employed Persons	2,269	2,215
Number Employed 0-91 Days with Firm	50	31
Number Employed 92-365 Days with Firm	276	283
Number Employed 366+ Days with Firm	1,943	1,901
Associated DSHS Medical Clients	3,959	3,847
Family Medical	58	42
Children's Medical and SCHIP	3,797	3,713
Pregnant Women	61	58
Persons with Disabilities	36	28
Other Coverage	7	6
Monthly Medical and MH Expenditures - All Funds	\$720,043	\$692,072
General Fund-State	\$260,936	\$250,227
General Fund-Federal	\$459,075	\$441,822
Health Services Account	\$31	\$24

TOTAL

	January 2010	April 2010
Number of Employed Clients/Persons	3,336	3,160
Number Employed 0-91 Days with Firm	200	105
Number Employed 92-365 Days with Firm	637	623
Number Employed 366+ Days with Firm	2,499	2,432
Associated DSHS Medical Clients	6,073	5,798
Family Medical	1,545	1,443
Children's Medical and SCHIP	4,071	3,953
Pregnant Women	258	225
Persons with Disabilities	186	163
Other Coverage	13	14
Monthly Medical and MH Expenditures - All Funds	\$1,424,742	\$1,333,944
General Fund-State	\$522,638	\$488,322
General Fund-Federal	\$901,961	\$845,498
Health Services Account	\$143	\$124

DATA SOURCES: This report is based on the analysis of Automated Client Eligibility System (ACES) employer name data linked to Medicaid Management Information System eligibility data. ACES employer name information does not permit the identification of separately owned franchises operating under the same business name. The employer name information used in this report is self-reported; it is not a required element of the application for public assistance and is not independently verified by DSHS.

2. MCDONALDS CORPORATION

Clients or persons with dependents with DSHS medical coverage, by type of DSHS coverage

Associated DSHS medical clients and estimated medical and mental health expenditures

PREPARED BY: DSHS Research and Data Analysis Division, March 2011

DSHS employed clients and their DSHS-covered dependents

	January 2010	April 2010
Number of Employed Clients	1,265	1,159
Number Employed 0-91 Days with Firm	72	96
Number Employed 92-365 Days with Firm	468	300
Number Employed 366+ Days with Firm	725	763
Associated DSHS Medical Clients	1,576	1,416
Family Medical	916	836
Children's Medical and SCHIP	312	249
Pregnant Women	240	219
Persons with Disabilities	99	105
Other Coverage	9	7
Monthly Medical and MH Expenditures - All Funds	\$571,333	\$525,955
General Fund-State	\$214,338	\$197,741
General Fund-Federal	\$356,918	\$328,130
Health Services Account	\$77	\$84

Non-client persons with DSHS-covered dependents

	January 2010	April 2010
Number of Employed Persons	1,230	1,265
Number Employed 0-91 Days with Firm	27	38
Number Employed 92-365 Days with Firm	247	178
Number Employed 366+ Days with Firm	956	1,049
Associated DSHS Medical Clients	2,033	2,055
Family Medical	199	199
Children's Medical and SCHIP	1,808	1,832
Pregnant Women	22	18
Persons with Disabilities	1	3
Other Coverage	3	3
Monthly Medical and MH Expenditures - All Funds	\$351,171	\$354,569
General Fund-State	\$143,683	\$144,212
General Fund-Federal	\$207,487	\$210,354
Health Services Account	\$1	\$3

TOTAL

	January 2010	April 2010
Number of Employed Clients/Persons	2,495	2,424
Number Employed 0-91 Days with Firm	99	134
Number Employed 92-365 Days with Firm	715	478
Number Employed 366+ Days with Firm	1,681	1,812
Associated DSHS Medical Clients	3,609	3,471
Family Medical	1,115	1,035
Children's Medical and SCHIP	2,120	2,081
Pregnant Women	262	237
Persons with Disabilities	100	108
Other Coverage	12	10
Monthly Medical and MH Expenditures - All Funds	\$922,504	\$880,524
General Fund-State	\$358,021	\$341,954
General Fund-Federal	\$564,405	\$538,484
Health Services Account	\$78	\$87

DATA SOURCES: This report is based on the analysis of Automated Client Eligibility System (ACES) employer name data linked to Medicaid Management Information System eligibility data. ACES employer name information does not permit the identification of separately owned franchises operating under the same business name. The employer name information used in this report is self-reported; it is not a required element of the application for public assistance and is not independently verified by DSHS.

3. SAFEWAY

Clients or persons with dependents with DSHS medical coverage, by type of DSHS coverage

Associated DSHS medical clients and estimated medical and mental health expenditures

PREPARED BY: DSHS Research and Data Analysis Division, March 2011

DSHS employed clients and their DSHS-covered dependents

	January 2010	April 2010
Number of Employed Clients	806	809
Number Employed 0-91 Days with Firm	60	56
Number Employed 92-365 Days with Firm	210	218
Number Employed 366+ Days with Firm	536	535
Associated DSHS Medical Clients	1,072	1,058
Family Medical	611	608
Children's Medical and SCHIP	138	123
Pregnant Women	102	96
Persons with Disabilities	214	225
Other Coverage	7	6
Monthly Medical and MH Expenditures - All Funds	\$416,764	\$412,475
General Fund-State	\$155,490	\$154,138
General Fund-Federal	\$261,115	\$258,170
Health Services Account	\$159	\$167

Non-client persons with DSHS-covered dependents

	January 2010	April 2010
Number of Employed Persons	864	859
Number Employed 0-91 Days with Firm	12	12
Number Employed 92-365 Days with Firm	126	122
Number Employed 366+ Days with Firm	726	725
Associated DSHS Medical Clients	1,416	1,453
Family Medical	33	39
Children's Medical and SCHIP	1,352	1,380
Pregnant Women	26	28
Persons with Disabilities	4	4
Other Coverage	1	2
Monthly Medical and MH Expenditures - All Funds	\$256,712	\$264,750
General Fund-State	\$92,884	\$96,081
General Fund-Federal	\$163,825	\$168,666
Health Services Account	\$4	\$4

TOTAL

	January 2010	April 2010
Number of Employed Clients/Persons	1,670	1,668
Number Employed 0-91 Days with Firm	72	68
Number Employed 92-365 Days with Firm	336	340
Number Employed 366+ Days with Firm	1,262	1,260
Associated DSHS Medical Clients	2,488	2,511
Family Medical	644	647
Children's Medical and SCHIP	1,490	1,503
Pregnant Women	128	124
Persons with Disabilities	218	229
Other Coverage	8	8
Monthly Medical and MH Expenditures - All Funds	\$673,477	\$677,225
General Fund-State	\$248,374	\$250,219
General Fund-Federal	\$424,940	\$426,836
Health Services Account	\$163	\$170

DATA SOURCES: This report is based on the analysis of Automated Client Eligibility System (ACES) employer name data linked to Medicaid Management Information System eligibility data. ACES employer name information does not permit the identification of separately owned franchises operating under the same business name. The employer name information used in this report is self-reported; it is not a required element of the application for public assistance and is not independently verified by DSHS.

4. THE KROGER CO

Clients or persons with dependents with DSHS medical coverage, by type of DSHS coverage

Associated DSHS medical clients and estimated medical and mental health expenditures

PREPARED BY: DSHS Research and Data Analysis Division, March 2011

DSHS employed clients and their DSHS-covered dependents

	January 2010	April 2010
Number of Employed Clients	480	455
Number Employed 0-91 Days with Firm	49	28
Number Employed 92-365 Days with Firm	131	140
Number Employed 366+ Days with Firm	300	287
Associated DSHS Medical Clients	657	571
Family Medical	416	349
Children's Medical and SCHIP	85	79
Pregnant Women	73	63
Persons with Disabilities	79	77
Other Coverage	4	3
Monthly Medical and MH Expenditures - All Funds	\$239,589	\$209,924
General Fund-State	\$89,490	\$78,114
General Fund-Federal	\$150,040	\$131,753
Health Services Account	\$59	\$56

Non-client persons with DSHS-covered dependents

	January 2010	April 2010
Number of Employed Persons	688	696
Number Employed 0-91 Days with Firm	19	9
Number Employed 92-365 Days with Firm	93	109
Number Employed 366+ Days with Firm	576	578
Associated DSHS Medical Clients	1,197	1,205
Family Medical	22	20
Children's Medical and SCHIP	1,152	1,160
Pregnant Women	21	23
Persons with Disabilities	2	2
Other Coverage	0	0
Monthly Medical and MH Expenditures - All Funds	\$213,900	\$216,718
General Fund-State	\$77,487	\$78,424
General Fund-Federal	\$136,411	\$138,293
Health Services Account	\$2	\$2

TOTAL

	January 2010	April 2010
Number of Employed Clients/Persons	1,168	1,151
Number Employed 0-91 Days with Firm	68	37
Number Employed 92-365 Days with Firm	224	249
Number Employed 366+ Days with Firm	876	865
Associated DSHS Medical Clients	1,854	1,776
Family Medical	438	369
Children's Medical and SCHIP	1,237	1,239
Pregnant Women	94	86
Persons with Disabilities	81	79
Other Coverage	4	3
Monthly Medical and MH Expenditures - All Funds	\$453,489	\$426,642
General Fund-State	\$166,977	\$156,538
General Fund-Federal	\$286,451	\$270,046
Health Services Account	\$61	\$59

DATA SOURCES: This report is based on the analysis of Automated Client Eligibility System (ACES) employer name data linked to Medicaid Management Information System eligibility data. ACES employer name information does not permit the identification of separately owned franchises operating under the same business name. The employer name information used in this report is self-reported; it is not a required element of the application for public assistance and is not independently verified by DSHS.

5. YUM! BRANDS INC

Clients or persons with dependents with DSHS medical coverage, by type of DSHS coverage

Associated DSHS medical clients and estimated medical and mental health expenditures

PREPARED BY: DSHS Research and Data Analysis Division, March 2011

DSHS employed clients and their DSHS-covered dependents

	January 2010	April 2010
Number of Employed Clients	607	590
Number Employed 0-91 Days with Firm	65	88
Number Employed 92-365 Days with Firm	242	172
Number Employed 366+ Days with Firm	300	330
Associated DSHS Medical Clients	821	859
Family Medical	550	608
Children's Medical and SCHIP	106	111
Pregnant Women	100	77
Persons with Disabilities	65	63
Other Coverage	0	0
Monthly Medical and MH Expenditures - All Funds	\$293,342	\$287,730
General Fund-State	\$109,309	\$107,106
General Fund-Federal	\$183,982	\$180,573
Health Services Account	\$50	\$50

Non-client persons with DSHS-covered dependents

	January 2010	April 2010
Number of Employed Persons	531	520
Number Employed 0-91 Days with Firm	16	29
Number Employed 92-365 Days with Firm	122	93
Number Employed 366+ Days with Firm	393	398
Associated DSHS Medical Clients	848	820
Family Medical	81	65
Children's Medical and SCHIP	748	738
Pregnant Women	15	13
Persons with Disabilities	3	3
Other Coverage	1	1
Monthly Medical and MH Expenditures - All Funds	\$155,106	\$148,206
General Fund-State	\$60,649	\$57,498
General Fund-Federal	\$94,455	\$90,706
Health Services Account	\$3	\$3

TOTAL

	January 2010	April 2010
Number of Employed Clients/Persons	1,138	1,110
Number Employed 0-91 Days with Firm	81	117
Number Employed 92-365 Days with Firm	364	265
Number Employed 366+ Days with Firm	693	728
Associated DSHS Medical Clients	1,669	1,679
Family Medical	631	673
Children's Medical and SCHIP	854	849
Pregnant Women	115	90
Persons with Disabilities	68	66
Other Coverage	1	1
Monthly Medical and MH Expenditures - All Funds	\$448,448	\$435,936
General Fund-State	\$169,958	\$164,604
General Fund-Federal	\$278,437	\$271,279
Health Services Account	\$53	\$53

DATA SOURCES: This report is based on the analysis of Automated Client Eligibility System (ACES) employer name data linked to Medicaid Management Information System eligibility data. ACES employer name information does not permit the identification of separately owned franchises operating under the same business name. The employer name information used in this report is self-reported; it is not a required element of the application for public assistance and is not independently verified by DSHS.

6. JACK IN THE BOX

Clients or persons with dependents with DSHS medical coverage, by type of DSHS coverage

Associated DSHS medical clients and estimated medical and mental health expenditures

PREPARED BY: DSHS Research and Data Analysis Division, March 2011

DSHS employed clients and their DSHS-covered dependents

	January 2010	April 2010
Number of Employed Clients	361	357
Number Employed 0-91 Days with Firm	40	45
Number Employed 92-365 Days with Firm	108	98
Number Employed 366+ Days with Firm	213	214
Associated DSHS Medical Clients	504	527
Family Medical	272	302
Children's Medical and SCHIP	119	114
Pregnant Women	86	80
Persons with Disabilities	27	29
Other Coverage	0	2
Monthly Medical and MH Expenditures - All Funds	\$182,289	\$185,530
General Fund-State	\$68,562	\$70,195
General Fund-Federal	\$113,707	\$115,312
Health Services Account	\$20	\$23

Non-client persons with DSHS-covered dependents

	January 2010	April 2010
Number of Employed Persons	559	560
Number Employed 0-91 Days with Firm	9	8
Number Employed 92-365 Days with Firm	94	69
Number Employed 366+ Days with Firm	456	483
Associated DSHS Medical Clients	894	902
Family Medical	73	75
Children's Medical and SCHIP	807	813
Pregnant Women	12	12
Persons with Disabilities	2	2
Other Coverage	0	0
Monthly Medical and MH Expenditures - All Funds	\$154,713	\$156,725
General Fund-State	\$63,579	\$64,085
General Fund-Federal	\$91,133	\$92,639
Health Services Account	\$2	\$2

TOTAL

	January 2010	April 2010
Number of Employed Clients/Persons	920	917
Number Employed 0-91 Days with Firm	49	53
Number Employed 92-365 Days with Firm	202	167
Number Employed 366+ Days with Firm	669	697
Associated DSHS Medical Clients	1,398	1,429
Family Medical	345	377
Children's Medical and SCHIP	926	927
Pregnant Women	98	92
Persons with Disabilities	29	31
Other Coverage	0	2
Monthly Medical and MH Expenditures - All Funds	\$337,003	\$342,255
General Fund-State	\$132,141	\$134,281
General Fund-Federal	\$204,840	\$207,951
Health Services Account	\$22	\$24

DATA SOURCES: This report is based on the analysis of Automated Client Eligibility System (ACES) employer name data linked to Medicaid Management Information System eligibility data. ACES employer name information does not permit the identification of separately owned franchises operating under the same business name. The employer name information used in this report is self-reported; it is not a required element of the application for public assistance and is not independently verified by DSHS.

7. ZIRKLE FRUIT COMPANY

Clients or persons with dependents with DSHS medical coverage, by type of DSHS coverage

Associated DSHS medical clients and estimated medical and mental health expenditures

PREPARED BY: DSHS Research and Data Analysis Division, March 2011

DSHS employed clients and their DSHS-covered dependents

	January 2010	April 2010
Number of Employed Clients	65	53
Number Employed 0-91 Days with Firm	7	7
Number Employed 92-365 Days with Firm	30	19
Number Employed 366+ Days with Firm	28	27
Associated DSHS Medical Clients	160	105
Family Medical	101	72
Children's Medical and SCHIP	41	21
Pregnant Women	17	10
Persons with Disabilities	1	1
Other Coverage	0	1
Monthly Medical and MH Expenditures - All Funds	\$48,212	\$31,690
General Fund-State	\$18,053	\$11,904
General Fund-Federal	\$30,159	\$19,786
Health Services Account	\$1	\$1

Non-client persons with DSHS-covered dependents

	January 2010	April 2010
Number of Employed Persons	720	773
Number Employed 0-91 Days with Firm	20	71
Number Employed 92-365 Days with Firm	170	116
Number Employed 366+ Days with Firm	530	586
Associated DSHS Medical Clients	1,381	1,503
Family Medical	111	132
Children's Medical and SCHIP	1,234	1,335
Pregnant Women	31	31
Persons with Disabilities	4	4
Other Coverage	1	1
Monthly Medical and MH Expenditures - All Funds	\$250,604	\$270,573
General Fund-State	\$100,178	\$109,307
General Fund-Federal	\$150,423	\$161,263
Health Services Account	\$4	\$3

TOTAL

	January 2010	April 2010
Number of Employed Clients/Persons	785	826
Number Employed 0-91 Days with Firm	27	78
Number Employed 92-365 Days with Firm	200	135
Number Employed 366+ Days with Firm	558	613
Associated DSHS Medical Clients	1,541	1,608
Family Medical	212	204
Children's Medical and SCHIP	1,275	1,356
Pregnant Women	48	41
Persons with Disabilities	5	5
Other Coverage	1	2
Monthly Medical and MH Expenditures - All Funds	\$298,816	\$302,264
General Fund-State	\$118,230	\$121,211
General Fund-Federal	\$180,582	\$181,048
Health Services Account	\$4	\$4

DATA SOURCES: This report is based on the analysis of Automated Client Eligibility System (ACES) employer name data linked to Medicaid Management Information System eligibility data. ACES employer name information does not permit the identification of separately owned franchises operating under the same business name. The employer name information used in this report is self-reported; it is not a required element of the application for public assistance and is not independently verified by DSHS.

8. WENDY'S/ARBY'S GROUP INC

Clients or persons with dependents with DSHS medical coverage, by type of DSHS coverage

Associated DSHS medical clients and estimated medical and mental health expenditures

PREPARED BY: DSHS Research and Data Analysis Division, March 2011

DSHS employed clients and their DSHS-covered dependents

	January 2010	April 2010
Number of Employed Clients	366	351
Number Employed 0-91 Days with Firm	36	41
Number Employed 92-365 Days with Firm	134	107
Number Employed 366+ Days with Firm	196	203
Associated DSHS Medical Clients	523	510
Family Medical	323	347
Children's Medical and SCHIP	97	74
Pregnant Women	72	62
Persons with Disabilities	31	27
Other Coverage	0	0
Monthly Medical and MH Expenditures - All Funds	\$185,864	\$176,074
General Fund-State	\$69,326	\$65,563
General Fund-Federal	\$116,514	\$110,489
Health Services Account	\$25	\$22

Non-client persons with DSHS-covered dependents

	January 2010	April 2010
Number of Employed Persons	342	344
Number Employed 0-91 Days with Firm	9	10
Number Employed 92-365 Days with Firm	66	52
Number Employed 366+ Days with Firm	267	282
Associated DSHS Medical Clients	530	525
Family Medical	36	26
Children's Medical and SCHIP	486	489
Pregnant Women	6	8
Persons with Disabilities	2	2
Other Coverage	0	0
Monthly Medical and MH Expenditures - All Funds	\$90,834	\$90,619
General Fund-State	\$37,054	\$36,821
General Fund-Federal	\$53,778	\$53,795
Health Services Account	\$2	\$2

TOTAL

	January 2010	April 2010
Number of Employed Clients/Persons	708	695
Number Employed 0-91 Days with Firm	45	51
Number Employed 92-365 Days with Firm	200	159
Number Employed 366+ Days with Firm	463	485
Associated DSHS Medical Clients	1,053	1,035
Family Medical	359	373
Children's Medical and SCHIP	583	563
Pregnant Women	78	70
Persons with Disabilities	33	29
Other Coverage	0	0
Monthly Medical and MH Expenditures - All Funds	\$276,698	\$266,693
General Fund-State	\$106,380	\$102,384
General Fund-Federal	\$170,291	\$164,284
Health Services Account	\$27	\$25

DATA SOURCES: This report is based on the analysis of Automated Client Eligibility System (ACES) employer name data linked to Medicaid Management Information System eligibility data. ACES employer name information does not permit the identification of separately owned franchises operating under the same business name. The employer name information used in this report is self-reported; it is not a required element of the application for public assistance and is not independently verified by DSHS.

9. SEARS HOLDINGS CORPORATION

Clients or persons with dependents with DSHS medical coverage, by type of DSHS coverage

Associated DSHS medical clients and estimated medical and mental health expenditures

PREPARED BY: DSHS Research and Data Analysis Division, March 2011

DSHS employed clients and their DSHS-covered dependents

	January 2010	April 2010
Number of Employed Clients	419	336
Number Employed 0-91 Days with Firm	93	21
Number Employed 92-365 Days with Firm	119	135
Number Employed 366+ Days with Firm	207	180
Associated DSHS Medical Clients	786	662
Family Medical	577	502
Children's Medical and SCHIP	99	70
Pregnant Women	65	57
Persons with Disabilities	44	32
Other Coverage	1	1
Monthly Medical and MH Expenditures - All Funds	\$253,843	\$213,925
General Fund-State	\$94,556	\$79,106
General Fund-Federal	\$159,253	\$134,796
Health Services Account	\$35	\$24

Non-client persons with DSHS-covered dependents

	January 2010	April 2010
Number of Employed Persons	325	306
Number Employed 0-91 Days with Firm	19	9
Number Employed 92-365 Days with Firm	71	65
Number Employed 366+ Days with Firm	235	232
Associated DSHS Medical Clients	503	474
Family Medical	21	17
Children's Medical and SCHIP	469	446
Pregnant Women	7	7
Persons with Disabilities	4	3
Other Coverage	2	1
Monthly Medical and MH Expenditures - All Funds	\$92,282	\$86,113
General Fund-State	\$33,646	\$31,532
General Fund-Federal	\$58,633	\$54,579
Health Services Account	\$4	\$3

TOTAL

	January 2010	April 2010
Number of Employed Clients/Persons	744	642
Number Employed 0-91 Days with Firm	112	30
Number Employed 92-365 Days with Firm	190	200
Number Employed 366+ Days with Firm	442	412
Associated DSHS Medical Clients	1,289	1,136
Family Medical	598	519
Children's Medical and SCHIP	568	516
Pregnant Women	72	64
Persons with Disabilities	48	35
Other Coverage	3	2
Monthly Medical and MH Expenditures - All Funds	\$346,125	\$300,039
General Fund-State	\$128,202	\$110,637
General Fund-Federal	\$217,885	\$189,374
Health Services Account	\$38	\$27

DATA SOURCES: This report is based on the analysis of Automated Client Eligibility System (ACES) employer name data linked to Medicaid Management Information System eligibility data. ACES employer name information does not permit the identification of separately owned franchises operating under the same business name. The employer name information used in this report is self-reported; it is not a required element of the application for public assistance and is not independently verified by DSHS.

10. STEMILT GROWERS INC

Clients or persons with dependents with DSHS medical coverage, by type of DSHS coverage

Associated DSHS medical clients and estimated medical and mental health expenditures

PREPARED BY: DSHS Research and Data Analysis Division, March 2011

DSHS employed clients and their DSHS-covered dependents

	January 2010	April 2010
Number of Employed Clients	99	93
Number Employed 0-91 Days with Firm	4	6
Number Employed 92-365 Days with Firm	36	32
Number Employed 366+ Days with Firm	59	55
Associated DSHS Medical Clients	134	113
Family Medical	67	70
Children's Medical and SCHIP	37	18
Pregnant Women	27	22
Persons with Disabilities	0	0
Other Coverage	3	3
Monthly Medical and MH Expenditures - All Funds	\$47,446	\$40,742
General Fund-State	\$17,910	\$15,432
General Fund-Federal	\$29,536	\$25,309
Health Services Account	\$0	\$0

Non-client persons with DSHS-covered dependents

	January 2010	April 2010
Number of Employed Persons	579	570
Number Employed 0-91 Days with Firm	5	37
Number Employed 92-365 Days with Firm	135	78
Number Employed 366+ Days with Firm	439	455
Associated DSHS Medical Clients	930	971
Family Medical	60	67
Children's Medical and SCHIP	853	883
Pregnant Women	15	19
Persons with Disabilities	1	1
Other Coverage	1	1
Monthly Medical and MH Expenditures - All Funds	\$160,172	\$170,430
General Fund-State	\$66,145	\$69,726
General Fund-Federal	\$94,025	\$100,703
Health Services Account	\$1	\$1

TOTAL

	January 2010	April 2010
Number of Employed Clients/Persons	678	663
Number Employed 0-91 Days with Firm	9	43
Number Employed 92-365 Days with Firm	171	110
Number Employed 366+ Days with Firm	498	510
Associated DSHS Medical Clients	1,064	1,084
Family Medical	127	137
Children's Medical and SCHIP	890	901
Pregnant Women	42	41
Persons with Disabilities	1	1
Other Coverage	4	4
Monthly Medical and MH Expenditures - All Funds	\$207,618	\$211,172
General Fund-State	\$84,056	\$85,158
General Fund-Federal	\$123,561	\$126,013
Health Services Account	\$1	\$1

DATA SOURCES: This report is based on the analysis of Automated Client Eligibility System (ACES) employer name data linked to Medicaid Management Information System eligibility data. ACES employer name information does not permit the identification of separately owned franchises operating under the same business name. The employer name information used in this report is self-reported; it is not a required element of the application for public assistance and is not independently verified by DSHS.

Additional copies of this report may be obtained from: www.dshs.wa.gov/rda.

PREPARED BY
Department of Social and Health Services Research and Data Analysis Division
Report Number 9.102A