

# Washington State Health Care Authority

## Report to the Legislature

### Employment Status of HCA Medical Assistance Clients and Persons with Dependents with HCA Medical Coverage

#### **ABRIDGED VERSION** **With Detail on Top 10 Firms**

As Required by Engrossed Substitute House Bill 3079  
Chapter 264, Laws of 2006

January 2013

PRODUCED FOR  
Washington State Health Care Authority  
PO Box 45502  
Olympia, WA. 98504-5502  
(360) 725-1040

BY  
Department of Social and Health Services  
Research and Data Analysis Division  
PO Box 45204  
Olympia, WA. 98504-5204  
(360) 902-0701  
FAX (360) 902-0705

WASHINGTON STATE  
**Health Care Authority**

**Located at:**  
626 8<sup>th</sup> Avenue SE  
Olympia, WA 98504-502

Report to the Legislature

**Employment Status of HCA Medical Assistance Clients and Persons with Dependents with HCA Medical Coverage**  
**ABRIDGED**

**Statewide Data for 2011**  
**By Firm Detail for 1/11 and 6/11**

As Required by Engrossed Substitute House Bill 3079, Chapter 264, Laws of 2006

January 2013

Prepared by

**DSHS** Research and Data Analysis Division

David Mancuso, PhD  
Barbara E.M. Felver, MES, MPA

For the

Washington State  
**Health Care Authority**

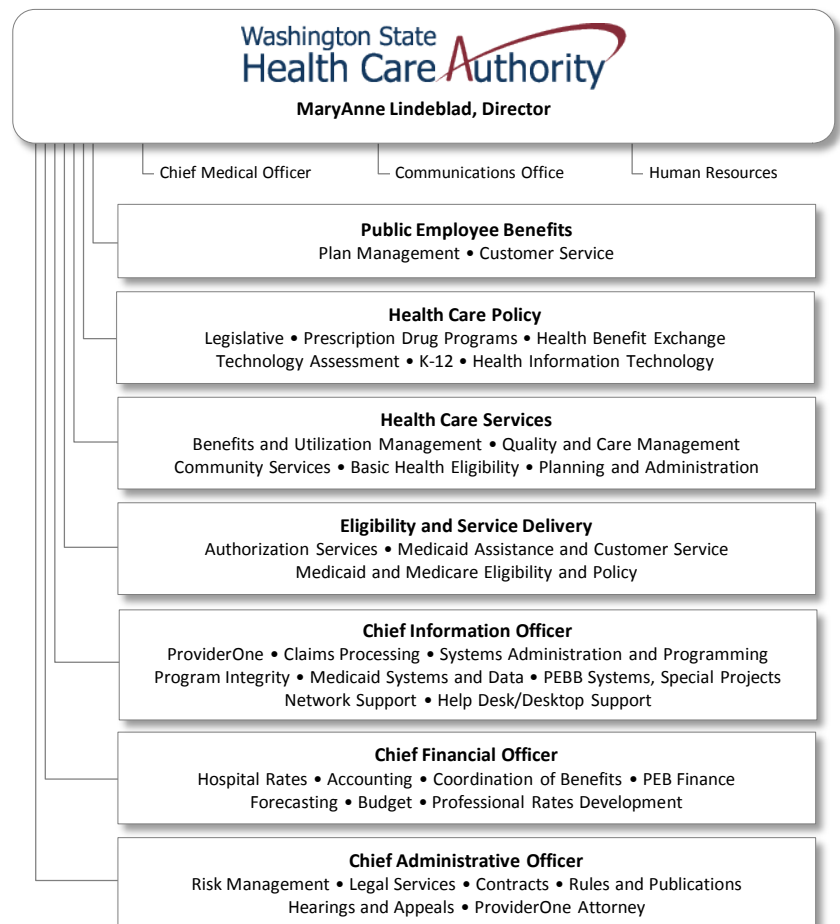
and

Washington State  
**Employment Security Department**

RDA report number 9.103A

360.902.0701

RDA's Online Library: [www.dshs.wa.gov/rda](http://www.dshs.wa.gov/rda)



# Employment Status of HCA Medical Assistance Clients and Persons with Dependents with HCA Medical Coverage

Statewide Data for CY 2011

By Firm Detail for January 2011 and June 2011

As Required by Engrossed Substitute House Bill 3079 (Chapter 264, Laws of 2006)

## ABRIDGED VERSION

With Detail for Top 10 Firms

Contents .....	1
Introduction .....	3
Key Findings – Medicaid and Related HCA Medical Clients .....	4
Overview of Counts of Employed Persons Associated with HCA Medical Coverage and HCA Covered Lives Associated with Employed Persons, Average per quarter in CY 2011 .....	4
Trends in Employment – Medicaid and Related HCA Medical Clients.....	5
Key Findings – Basic Health Plan Clients.....	6
Data Sources and Limitations .....	7
<b>Aggregate Tables .....</b>	<b>9</b>
<i>Employment Status of HCA Medical Assistance Clients and Persons with Dependents with HCA Medical Coverage: Calendar Year 2011</i>	
<b>Table 1A.</b> Total Employed HCA Medical Assistance Clients and Non-Client Persons with Dependents with HCA Medical Coverage: <i>Yearly Average per Quarter</i> .....	10
<b>Table 1B.</b> Total Employed HCA Medical Assistance Clients and Non-Client Persons with Dependents with HCA Medical Coverage: <i>Annual Profile</i> .....	11
<b>Table 2A.</b> Employed HCA Medical Assistance Clients: <i>Yearly Average per Quarter</i> .....	12
<b>Table 2B.</b> Employed HCA Medical Assistance Clients: <i>Annual Profile</i> .....	13
<b>Table 3A.</b> Employed Non-Client Persons with Dependents with HCA Medical Coverage: <i>Yearly Average per Quarter</i> .....	14
<b>Table 3B.</b> Employed Non-Client Persons with Dependents with HCA Medical Coverage: <i>Annual Profile</i> .....	15
<b>Table 4A.</b> Total Employed Basic Health Plan Clients: <i>Yearly Average per Quarter</i> .....	16
<b>Table 4B.</b> Total Employed Basic Health Plan Clients: <i>Annual Profile</i> .....	17
<b>By-Firm Tables.....</b>	<b>19</b>
<i>Employment of HCA Medical Assistance Clients and Persons with Dependents with HCA Medical Coverage by Firm: January and June 2011</i>	
<b>Table 5.</b> Rank of Firms by Number of Employed Persons Associated with HCA Medical Clients, High to Low .....	21
<b>Aggregate Table.</b> Washington State Roll-up .....	36
<b>ABRIDGED   Supplemental Tables.</b> Following Rank Order Presented in Table 4 .....	<b>For Top 10 Firms</b>



# Employment Status of HCA Medical Assistance Clients and Persons with Dependents with HCA Medical Coverage

Statewide Data for CY 2011

By Firm Detail for January 2011 and June 2011

As Required by Engrossed Substitute House Bill 3079 (Chapter 264, Laws of 2006)

January 2013

## INTRODUCTION

Nationally, an increasing number of employers faced with rising employee health care premium costs either have chosen to drop health care benefits for their employees or to pass on to their employees a greater share of coverage costs. As a consequence, there have been trends towards more employees and their dependents applying for state purchased health care programs supported with public funds. In response to these trends, the 2006 State Legislature enacted Engrossed Substitute House Bill (ESHB) 3079. This legislation directed the Department of Social and Health Services (DSHS) and the Health Care Authority (HCA) in coordination with the Employment Security Department (ESD) to report annually on the employment of Medical Assistance clients and Basic Health Program (BHP) enrollees.

This report provides both aggregate and employer-specific data related to HCA Medical Assistance clients and non-client parents with dependents with HCA medical coverage, as specified in the legislation (enacted as Chapter 264, Laws of 2006 and codified in RCW 74.09.053 and RCW 70.47.170).

Governor Gregoire signed ESHB 3079, but vetoed the emergency clause included in the bill. The Governor's veto message urged caution when interpreting information provided in this report:

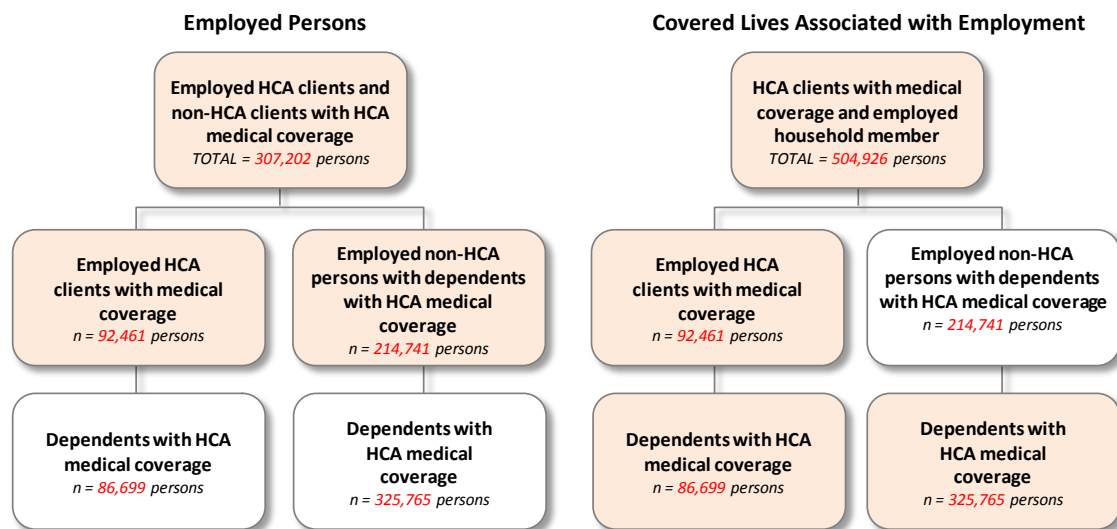
The employer information to be provided by the Health Care Authority (HCA) and the Department of Social and Health Services (DSHS) is not a requirement for enrollment or eligibility. Consequently, data contained in the reports will have been provided on a voluntary basis, and will be unverified. The two reports—an employer specific report and an aggregated report—will originate from separate sources. Therefore, they will not be comparable. The reports will also be based on a point-in-time data collection and will therefore not reflect changes in employment status. These data limitations must be considered when interpreting the reports.

ESHB 3079 directs the provision of two separate sets of information related to HCA Medical Assistance clients and non-client parents with dependents with HCA medical coverage:

- Aggregate data for calendar year (CY) 2011 by industry, firm size, and public/private ownership type. These data are based on ESD quarterly wage data.
- By-firm data for January and June 2011 for employers associated with 50 or more persons with HCA medical coverage. These data are based on DSHS Automated Client Eligibility System (ACES) employer name data.

## KEY FINDINGS – MEDICAID AND RELATED HCA MEDICAL CLIENTS

### Overview of Counts of Employed Persons Associated with HCA Medical Coverage and HCA Covered Lives Associated with Employed Persons Average per quarter in CY 2011



1. In the average quarter in CY 2011, there were 1,165,487 persons with HCA medical coverage, excluding clients who received only family planning coverage. This also excludes Basic Health Plan enrollees who are discussed in a later section.
2. In the average quarter in CY 2011, there were 92,461 persons with HCA medical coverage and ESD-reported earnings in the quarter (see Table 2A “All Firms”). This represents about 8 percent of all persons with HCA medical coverage in the average quarter in CY 2011.
3. The 92,461 employed HCA clients had 86,699 dependents with HCA medical coverage, for an average quarterly total of 179,160 covered lives (see Table 2B “All Firms”). This represents 15 percent of all persons with HCA coverage in the average quarter in CY 2011.
4. We use the term “employed non-client persons with dependents with HCA coverage” to refer to employed persons who do not have HCA coverage, but who have dependents with HCA coverage. In the average quarter in CY 2011, there were 214,741 employed non-client persons with dependents with HCA coverage (see Table 3A “All Firms”). There were 325,765 dependents with HCA coverage associated with these employed non-clients (see Table 3B “All Firms”). This represents 28 percent of all persons with HCA medical coverage in the average quarter in CY 2011.
5. Combining employed clients and non-client persons, there were 307,202 employed HCA clients or non-client persons with dependents with HCA medical coverage in the average calendar quarter in CY 2011 (see Table 1A “All Firms”).
6. In the average quarter in CY 2011, there were 504,926 HCA covered lives associated with the 307,202 employed HCA clients and persons with dependents with HCA medical coverage (Table 1B “All Firms”). This represents 43 percent of all persons with HCA medical coverage in the average quarter in CY 2011.
7. The 307,202 employed HCA medical clients or non-client persons with dependents with HCA medical coverage in CY 2011 represented an 18 percent increase over the 259,628 employed clients/persons observed in CY 2009.

8. In CY 2011, about 60 percent of employed HCA clients and non-client persons with dependents with HCA coverage worked for firms with more than 50 employees (Table 2A and 3A “By Firm Size”).
9. Employed non-client persons with dependents with HCA medical coverage worked more hours than employed HCA medical clients. Nearly half (44 percent) of employed non-client persons with dependents with HCA coverage worked full-time (more than 455 hours) in the quarter (Table 3A “All Firms”), compared to only 15 percent of employed clients (Table 2A “All Firms”).
10. There were 5.8 million months of HCA medical coverage in CY 2011 associated with employed HCA clients and non-client persons with dependents with HCA medical coverage. About 35 percent of the months were associated with employed HCA clients (2.0 million coverage months), and about 65 percent were associated with employed non-client persons with dependents with HCA coverage (3.8 million coverage months).
11. Estimated HCA medical and DSHS mental health expenditures for the months of coverage associated with employed clients and non-client persons with dependents with HCA coverage were \$1.353 billion in CY 2011 (all funds). Of this total, approximately \$653 million were associated with employed HCA medical clients, and \$700 million were associated with employed non-client persons with dependents with HCA medical coverage.
12. Associated annual HCA coverage costs were greatest for persons employed in the following industries: Health and Social Assistance (\$207 million); Retail Trade (\$192 million); and Accommodation and Food Services (\$173 million).
13. Almost all (92.3 percent) of the annual HCA coverage costs were associated with private employers (\$1.249 billion), as opposed to public employers (\$105 million).
14. Detailed information for the largest employers of HCA clients and non-client persons with dependents with HCA coverage can be found in the supplemental tables at the end of this report.

## TRENDS IN EMPLOYMENT – MEDICAID AND RELATED HCA MEDICAL CLIENTS

The table below provides an overview of the trend in the proportion of HCA medical clients associated with employment from 2005 to 2011, as identified using ESD quarterly earnings data. Some of the year-to-year variation in the table below is the result of slight changes in data processing methods over the reporting period. These trends exclude Basic Health Plan enrollees who are discussed in the next section.

The overall proportion of HCA clients associated with employment (clients who were employed or the dependent of an employed person) declined from 45 percent of the overall HCA medical caseload in 2008 to 43 percent of the caseload in 2011.

**HCA Medical Program's Employed Clients and Non-Client Persons  
with Dependents with HCA Medical Coverage**

	Employed HCA Clients and Non-HCA Clients with Dependent HCA Clients	Average Quarterly HCA Medical Covered Lives	Average Quarterly HCA Enrollment	Percent of HCA Clients Associated with Employment
CY 2005	240,062	425,765	936,860	45%
CY 2006	243,114	427,448	908,870	47%
CY 2007	231,111	404,026	915,322	44%
CY 2008	256,489	440,925	975,218	45%
CY 2009	259,628	453,695	1,054,239	43%
CY 2011	307,202	504,926	1,165,487	43%

## KEY FINDINGS – BASIC HEALTH PLAN CLIENTS

1. In the average quarter in CY 2011, there were 44,557 persons with at least one month of HCA Basic Health Plan coverage.
2. In the average quarter in CY 2011, there were 13,623 persons with HCA Basic Health Plan and ESD-matchable earnings in the quarter (see Table 4A “All Firms”). This represents about 31 percent of all persons with HCA medical coverage in the average quarter in CY 2011.
3. In CY 2011, about 47 percent of employed HCA Basic Health Plan worked for firms with more than 50 employees (Table 4A “By Firm Size”).
4. There were 151,523 months of HCA Basic Health Plan coverage in CY 2011 associated with HCA Basic Health Plan clients with ESD-matchable earnings (Table 4B “All Firms”).
5. The estimated HCA share of Basic Health Plan expenditures for the months of coverage associated with Basic Health Plan enrollees with ESD-matchable earnings was \$29.5 million in CY 2011 (Table 4B “All Firms”).
6. Associated annual HCA Basic Health Plan coverage costs were greatest for persons employed in the following industries: Health and Social Assistance (\$3.7 million); Retail Trade (\$4.1 million); and Accommodation and Food Services (\$5.2 million).
7. Almost all (90 percent) of the annual HCA Basic Health Plan coverage costs were associated with private employers (\$26.4 million), as opposed to public employers (\$3.0 million).

In addition to the analysis of matched ESD wage data, a sample of 1,691 Basic Health Plan coverage months in January and June 2012 was reviewed to identify the specific employer associated with the Basic Health Plan members.

- For 34 percent of sampled coverage months, employment status could not be determined from records available to HCA program staff.
- For 18 percent of sampled coverage months, the person was identified as unemployed or a student.
- In 11 percent of the sampled coverage months, the person was identified as self-employed.
- In 3 percent of the sampled coverage months, the person was identified to have unearned income from retirement, disability, or spouse employment.
- In the remaining 34 percent of cases (569 sampled coverage months), an employer was identified. The most common employers were:
  - 10 coverage months were associated with employment as a DSHS provider;
  - 4 coverage months were associated with employment by Zirkle Fruit Company; and
  - 3 coverage months were associated with each of the following employers: Broetje Orchard, McDonald's, Rite Aid, Seattle Public Schools, Wal-Mart, Washington Fruit & Produce Co., And Washington State Migrant Council.



## DATA SOURCES AND LIMITATIONS

Aggregate data by industry, firm size, and public/private ownership type are based on ESD quarterly earnings data and monthly medical eligibility data for CY 2011. ESD earnings data do not include self-employment, federal government employment, or unreported earnings.

By-firm data for Medicaid and related HCA clients are based on ACES employer name data linked to medical eligibility data for January and June 2011. ACES employer name information does not permit the identification of separately owned franchises operating under the same business name. The employer name information used in this report is self-reported; it is not a required element of the application for public assistance and is not independently verified by staff. Employer rankings are based on the average monthly number of employed persons associated with HCA medical clients in January and June 2011.

The tables report the number of HCA clients or persons with dependents with HCA medical coverage who were employed, and the associated “member months” by type of coverage. Coverage type was determined based on ProviderOne RAC codes.

**The Family Medical coverage group** includes persons receiving TANF and related medical coverage.

**The Apple Health for Kids program** provides medical coverage to children in families that do not meet TANF eligibility criteria but have household income below 200 percent of the Federal Poverty Guideline (FPL) through Medicaid funding, 300 percent of FPL through the Children’s Health Insurance Program (CHIP) funding, and up to 300 percent of the FPL for non-citizen children through the Children’s Health Program (CHP). This coverage group also includes a small number of children enrolled in Foster Care or Adoptions Support coverage.

**The Pregnant Women program** provides Medicaid coverage to low-income pregnant women.

**The Persons with Disabilities coverage group** includes persons enrolled in Medicaid Disabled, Medicaid Blind, General Assistance, and Alcohol and Drug Abuse Treatment and Support Act (ADATSA) coverage.

**The “Other” coverage group** includes a small number of persons receiving HCA medical coverage through programs for refugees and the elderly. Clients who received family planning coverage only were excluded from the analysis.

Employed non-client persons with dependents with HCA medical coverage were counted if they were part of a household with at least one person who received HCA medical coverage. To be counted, the employed person had to be identified as the head of household, spouse, or unmarried co-parent of a child in common with the head of household.

Counts of employed clients or persons with dependents with HCA medical coverage were associated with a single “primary employer” in each month. The vast majority of employed clients or persons with dependents with HCA medical coverage had a single employer in the quarter. In cases where the person had more than one employer in the quarter, the primary employer was defined to be the employer from whom the person received the greatest earnings.

To create an unduplicated count of member months and expenditures associated with employed persons, in the cases where a dependent was associated with more than one employed person, we associated the dependent with the person who had the highest earnings. For both the aggregate and by-firm data tables, per member per month HCA Medical Assistance expenditure estimates were based on per capita estimates for SFY 2011. Per member per month DSHS Mental Health expenditure estimates were based on statewide average RSN capitation rates for SFY 2011.





## Aggregate Tables

Employment Status of HCA Medical Assistance Clients and  
Persons with Dependents with HCA Medical Coverage:

**Calendar Year 2011**

TABLE 1A.  
Total Employed HCA Medical Assistance Clients and Non-Client Persons with Dependents with HCA Medical Coverage

CY 2011	Number of Employed Clients or Persons with Dependents					Percent of Total Employed Clients/ Persons	Yearly Average per Quarter			
	QUARTER						BY HOURS WORKED IN QUARTER			
	1	2	3	4	YEARLY Average per Quarter		1 to 261	262 to 455	More than 455	Unknown
<b>All Firms</b>	<b>293,715</b>	<b>308,005</b>	<b>320,173</b>	<b>306,914</b>	<b>307,202</b>	<b>100.0%</b>	<b>109,876</b>	<b>87,811</b>	<b>108,625</b>	<b>890</b>
<b>By Industry</b>										
Agriculture (11)	17,214	22,265	27,438	21,991	22,227	7.2%	7,819	5,395	9,002	12
Mining (21)	178	184	174	175	178	0.1%	45	43	90	0
Utilities (22)	252	289	266	248	264	0.1%	69	44	150	0
Construction (23)	13,297	14,460	15,385	14,690	14,458	4.7%	5,621	4,096	4,713	28
Manufacturing (31-33)	20,502	21,486	23,391	22,698	22,019	7.2%	3,814	4,485	13,705	16
Wholesale Trade (42)	9,165	9,568	9,982	9,745	9,615	3.1%	2,018	1,912	5,670	16
Retail Trade (44)	44,637	44,824	46,130	48,008	45,900	14.9%	16,328	13,524	16,018	30
Transportation/Warehousing (48)	7,068	7,169	7,686	7,679	7,401	2.4%	2,070	1,911	3,382	38
Information (51)	2,842	2,866	2,861	2,730	2,825	0.9%	985	685	1,133	22
Finance and Insurance (52)	5,456	5,417	5,494	5,458	5,456	1.8%	984	1,480	2,948	44
Real Estate (53)	5,330	5,522	5,611	5,225	5,422	1.8%	1,662	1,173	2,578	10
Professional/Technical (54)	7,394	7,075	6,807	6,969	7,061	2.3%	2,579	1,679	2,784	20
Management (55)	399	405	429	408	410	0.1%	119	120	171	0
Administrative/Waste (56)	22,340	24,136	25,756	24,262	24,124	7.9%	10,584	6,077	7,258	205
Educational Services (61)	13,070	13,151	11,697	12,898	12,704	4.1%	7,070	3,620	2,009	5
Health Care, Soc. Assistance (62)	46,016	46,639	46,892	45,998	46,386	15.1%	13,519	15,005	17,710	152
Arts and Entertainment (71)	7,718	8,672	8,973	7,945	8,327	2.7%	3,600	2,324	2,401	2
Accommodation and Food (72)	44,818	47,394	47,978	44,235	46,106	15.0%	21,280	16,648	8,161	18
Other Services (81)	19,834	19,824	20,093	19,404	19,789	6.4%	7,818	6,193	5,727	51
Other Government (92)	5,859	6,373	6,937	6,072	6,310	2.1%	1,895	1,400	3,014	2
Unknown	326	286	193	76	220	0.1%	0	0	0	220
<b>By Ownership Type</b>										
Public	23,612	24,325	23,512	23,557	23,752	7.7%	9,266	6,384	7,877	225
Private	270,103	283,679	296,661	283,357	283,450	92.3%	100,610	81,427	100,747	666
Unknown	0	1	0	0	0	0.0%	0	0	0	0
<b>By Firm Size</b>										
1-50	120,860	128,109	128,728	125,856	125,888	41.0%	49,735	36,971	38,596	587
51-100	26,563	28,522	29,113	27,916	28,029	9.1%	9,022	7,547	11,433	26
101-1000	89,644	95,311	100,289	94,858	95,026	30.9%	31,727	25,653	37,480	166
1001-5000	44,777	40,810	47,806	45,425	44,705	14.6%	15,702	14,084	14,809	110
5000+	11,871	15,252	14,237	12,859	13,555	4.4%	3,690	3,555	6,307	3
Unknown	0	1	0	0	0	0.0%	0	0	0	0

TABLE 1B.  
Total Employed HCA Medical Assistance Clients and Non-Client Persons with Dependents with HCA Medical Coverage

CY 2011	Number of Employed Clients or Persons with Dependents			Annual Profile		
	YEARLY Average per Quarter	Percent of Total Employed Clients/Persons	Average Quarterly Covered Lives Associated with Employed Clients/Persons	Annual Months of HCA Coverage Associated with Employed Clients/Persons	Annual HCA Medical and DSHS Mental Health Costs for Associated HCA Coverage (Estimated)	
<b>All Firms</b>	<b>307,202</b>	<b>100.0%</b>	<b>504,926</b>	<b>5,788,968</b>	<b>\$1,353,327,907</b>	
<b>By Industry</b>						
Agriculture (11)	22,227	7.2%	41,168	479,889	\$97,383,465	
Mining (21)	178	0.1%	395	4,534	\$922,057	
Utilities (22)	264	0.1%	540	6,178	\$1,383,672	
Construction (23)	14,458	4.7%	30,978	354,369	\$76,664,816	
Manufacturing (31-33)	22,019	7.2%	43,556	500,558	\$106,981,835	
Wholesale Trade (42)	9,615	3.1%	18,171	208,764	\$45,020,420	
Retail Trade (44)	45,900	14.9%	66,458	758,639	\$191,522,532	
Transportation/Warehousing (48)	7,401	2.4%	14,896	170,680	\$38,386,499	
Information (51)	2,825	0.9%	4,469	50,675	\$11,823,562	
Finance and Insurance (52)	5,456	1.8%	8,894	101,436	\$21,830,837	
Real Estate (53)	5,422	1.8%	9,246	106,022	\$24,585,754	
Professional/Technical (54)	7,061	2.3%	11,052	126,064	\$28,683,403	
Management (55)	410	0.1%	658	7,590	\$1,826,408	
Administrative/Waste (56)	24,124	7.9%	42,688	486,934	\$121,862,292	
Educational Services (61)	12,704	4.1%	20,101	232,195	\$51,592,500	
Health Care, Soc. Assistance (62)	46,386	15.1%	76,452	878,053	\$206,986,558	
Arts and Entertainment (71)	8,327	2.7%	11,843	134,993	\$33,181,680	
Accommodation and Food (72)	46,106	15.0%	59,707	681,310	\$172,967,221	
Other Services (81)	19,789	6.4%	31,614	363,691	\$89,680,787	
Other Government (92)	6,310	2.1%	11,598	131,663	\$28,902,002	
Unknown	220	0.1%	446	4,731	\$1,139,608	
<b>By Ownership Type</b>						
Public	23,752	7.7%	41,246	472,274	\$104,671,920	
Private	283,450	92.3%	463,680	5,316,688	\$1,248,655,011	
Unknown	0	0.0%	1	6	\$976	
<b>By Firm Size</b>						
1-50	125,888	41.0%	204,524	2,347,432	\$548,127,634	
51-100	28,029	9.1%	46,756	536,940	\$123,897,935	
101-1000	95,026	30.9%	158,816	1,820,542	\$422,597,891	
1001-5000	44,705	14.6%	73,483	841,085	\$198,224,271	
5000+	13,555	4.4%	21,346	242,963	\$60,479,200	
Unknown	0	0.0%	1	6	\$976	

TABLE 2A.  
Employed HCA Medical Assistance Clients

CY 2011	Number of Employed Clients with HCA Coverage					Percent of Total Employed Clients	Yearly Average per Quarter				
	QUARTER						YEARLY Average per Quarter	BY HOURS WORKED IN QUARTER			
	1	2	3	4				1 to 261	262 to 455	More than 455	Unknown
<b>All Firms</b>	<b>85,330</b>	<b>92,328</b>	<b>100,261</b>	<b>91,924</b>	<b>92,461</b>	<b>100.0%</b>	<b>53,910</b>	<b>23,995</b>	<b>14,276</b>	<b>280</b>	
<b>By Industry</b>											
Agriculture (11)	2,016	4,211	7,302	3,601	4,283	4.6%	2,731	896	652	4	
Mining (21)	21	21	24	24	23	0.0%	11	5	6	0	
Utilities (22)	46	53	51	47	49	0.1%	25	13	11	0	
Construction (23)	2,210	2,644	3,041	2,716	2,653	2.9%	1,666	605	377	6	
Manufacturing (31-33)	3,296	3,614	4,584	4,078	3,893	4.2%	1,708	967	1,216	3	
Wholesale Trade (42)	1,662	1,809	2,058	1,943	1,868	2.0%	881	456	529	3	
Retail Trade (44)	15,848	15,856	16,780	18,227	16,678	18.0%	9,292	4,544	2,833	9	
Transportation/Warehousing (48)	1,563	1,617	1,860	1,771	1,703	1.8%	838	470	384	11	
Information (51)	807	833	792	753	796	0.9%	503	168	118	8	
Finance and Insurance (52)	1,044	1,084	1,118	1,060	1,077	1.2%	391	322	353	11	
Real Estate (53)	1,391	1,475	1,534	1,323	1,431	1.5%	789	326	313	3	
Professional/Technical (54)	2,077	1,877	1,756	1,876	1,897	2.1%	1,214	387	289	6	
Management (55)	153	155	166	153	157	0.2%	76	56	26	0	
Administrative/Waste (56)	8,014	9,107	10,335	9,356	9,203	10.0%	5,919	1,958	1,237	89	
Educational Services (61)	3,272	3,213	2,824	3,095	3,101	3.4%	2,427	501	171	2	
Health Care, Soc. Assistance (62)	14,107	14,256	14,201	13,821	14,096	15.2%	7,161	4,307	2,597	32	
Arts and Entertainment (71)	2,405	3,023	3,287	2,624	2,835	3.1%	1,887	635	312	1	
Accommodation and Food (72)	17,402	19,209	19,747	17,571	18,482	20.0%	11,854	5,299	1,321	8	
Other Services (81)	6,400	6,491	6,668	6,393	6,488	7.0%	3,523	1,737	1,217	12	
Other Government (92)	1,485	1,685	2,070	1,466	1,677	1.8%	1,016	347	314	1	
Unknown	111	95	63	26	74	0.1%	0	0	0	74	
<b>By Ownership Type</b>											
Public	5,891	6,091	6,118	5,669	5,942	6.4%	3,767	1,259	841	75	
Private	79,439	86,237	94,143	86,255	86,519	93.6%	50,143	22,736	13,435	205	
Unknown	0	0	0	0	0	0.0%	0	0	0	0	
<b>By Firm Size</b>											
1-50	34,410	38,184	39,500	36,502	37,149	40.2%	22,517	9,465	4,957	211	
51-100	7,324	8,179	8,790	8,025	8,080	8.7%	4,613	2,128	1,333	6	
101-1000	26,094	28,683	32,010	28,406	28,798	31.1%	16,668	7,391	4,703	37	
1001-5000	13,708	11,974	14,969	14,722	13,843	15.0%	7,999	3,832	1,988	26	
5000+	3,794	5,308	4,992	4,269	4,591	5.0%	2,114	1,181	1,295	1	
Unknown	0	0	0	0	0	0.0%	0	0	0	0	

TABLE 2B.

Employed HCA Medical Assistance Clients

CY 2011	Number of Employed Clients with HCA Coverage			Annual Profile		
	YEARLY Average per Quarter	Percent of Total Employed Clients	Average Quarterly Covered Lives Associated with Employed Clients	Annual Months of HCA Coverage Associated with Employed Clients/Persons	Annual HCA Medical and DSHS (Mental Health Costs for Associated HCA Coverage (Estimated)	
<b>All Firms</b>	<b>92,461</b>	<b>100.0%</b>	<b>179,160</b>	<b>2,009,372</b>	<b>\$652,814,526</b>	
<b>By Industry</b>						
Agriculture (11)	4,283	4.6%	6,812	76,768	\$22,927,433	
Mining (21)	23	0.0%	60	644	\$195,879	
Utilities (22)	49	0.1%	100	1,131	\$398,372	
Construction (23)	2,653	2.9%	6,408	71,300	\$21,616,538	
Manufacturing (31-33)	3,893	4.2%	8,884	98,941	\$30,837,848	
Wholesale Trade (42)	1,868	2.0%	4,095	45,631	\$14,439,542	
Retail Trade (44)	16,678	18.0%	29,461	330,207	\$110,349,379	
Transportation/Warehousing (48)	1,703	1.8%	4,263	47,690	\$14,818,877	
Information (51)	796	0.9%	1,389	15,433	\$5,371,704	
Finance and Insurance (52)	1,077	1.2%	2,368	25,981	\$8,722,823	
Real Estate (53)	1,431	1.5%	3,050	34,168	\$11,275,935	
Professional/Technical (54)	1,897	2.1%	3,742	41,818	\$13,754,948	
Management (55)	157	0.2%	283	3,217	\$1,033,840	
Administrative/Waste (56)	9,203	10.0%	19,969	224,145	\$71,426,851	
Educational Services (61)	3,101	3.4%	6,405	72,916	\$23,080,173	
Health Care, Soc. Assistance (62)	14,096	15.2%	30,253	340,938	\$112,734,873	
Arts and Entertainment (71)	2,835	3.1%	4,781	53,300	\$18,247,236	
Accommodation and Food (72)	18,482	20.0%	29,474	329,362	\$108,247,411	
Other Services (81)	6,488	7.0%	13,995	158,523	\$51,216,855	
Other Government (92)	1,677	1.8%	3,186	35,391	\$11,552,402	
Unknown	74	0.1%	186	1,868	\$565,607	
<b>By Ownership Type</b>						
Public	5,942	6.4%	12,364	138,902	\$44,564,211	
Private	86,519	93.6%	166,797	1,870,470	\$608,250,315	
Unknown	0	0.0%	0	0	\$0	
<b>By Firm Size</b>						
1-50	37,149	40.2%	72,366	811,908	\$261,696,626	
51-100	8,080	8.7%	15,243	170,928	\$56,157,174	
101-1000	28,798	31.1%	55,697	624,902	\$201,847,049	
1001-5000	13,843	15.0%	27,235	305,225	\$100,117,916	
5000+	4,591	5.0%	8,619	96,409	\$32,995,762	
Unknown	0	0.0%	0	0	\$0	

TABLE 3A.  
Employed Non-Client Persons with Dependents with HCA Medical Coverage

CY 2011	Number of Employed Non-Client Persons with Dependents					Percent of Total Employed Non-Client Persons	Yearly Average per Quarter			
	QUARTER						YEARLY Average per Quarter	BY HOURS WORKED IN QUARTER		
	1	2	3	4				1 to 261	262 to 455	More than 455
<b>All Firms</b>	<b>208,385</b>	<b>215,677</b>	<b>219,912</b>	<b>214,990</b>	<b>214,741</b>	<b>100.0%</b>	<b>55,967</b>	<b>63,816</b>	<b>94,349</b>	<b>610</b>
<b>By Industry</b>										
Agriculture (11)	15,198	18,054	20,136	18,390	17,945	8.4%	5,088	4,499	8,350	8
Mining (21)	157	163	150	151	155	0.1%	33	38	84	0
Utilities (22)	206	236	215	201	215	0.1%	44	31	139	0
Construction (23)	11,087	11,816	12,344	11,974	11,805	5.5%	3,955	3,491	4,337	23
Manufacturing (31-33)	17,206	17,872	18,807	18,620	18,126	8.4%	2,106	3,518	12,489	14
Wholesale Trade (42)	7,503	7,759	7,924	7,802	7,747	3.6%	1,137	1,457	5,141	13
Retail Trade (44)	28,789	28,968	29,350	29,781	29,222	13.6%	7,036	8,980	13,185	21
Transportation/Warehousing (48)	5,505	5,552	5,826	5,908	5,698	2.7%	1,232	1,441	2,998	27
Information (51)	2,035	2,033	2,069	1,977	2,029	0.9%	482	517	1,015	14
Finance and Insurance (52)	4,412	4,333	4,376	4,398	4,380	2.0%	594	1,157	2,595	34
Real Estate (53)	3,939	4,047	4,077	3,902	3,991	1.9%	874	846	2,265	7
Professional/Technical (54)	5,317	5,198	5,051	5,093	5,165	2.4%	1,365	1,292	2,494	13
Management (55)	246	250	263	255	254	0.1%	43	65	146	0
Administrative/Waste (56)	14,326	15,029	15,421	14,906	14,921	6.9%	4,665	4,119	6,020	116
Educational Services (61)	9,798	9,938	8,873	9,803	9,603	4.5%	4,643	3,119	1,838	4
Health Care, Soc. Assistance (62)	31,909	32,383	32,691	32,177	32,290	15.0%	6,359	10,699	15,114	120
Arts and Entertainment (71)	5,313	5,649	5,686	5,321	5,492	2.6%	1,713	1,690	2,089	1
Accommodation and Food (72)	27,416	28,185	28,231	26,664	27,624	12.9%	9,426	11,349	6,840	10
Other Services (81)	13,434	13,333	13,425	13,011	13,301	6.2%	4,295	4,456	4,510	40
Other Government (92)	4,374	4,688	4,867	4,606	4,634	2.2%	879	1,054	2,700	2
Unknown	215	191	130	50	147	0.1%	0	0	0	146
<b>By Ownership Type</b>										
Public	17,721	18,234	17,394	17,888	17,809	8.3%	5,499	5,125	7,036	150
Private	190,664	197,442	202,518	197,102	196,932	91.7%	50,467	58,691	87,313	461
Unknown	0	1	0	0	0	0.0%	0	0	0	0
<b>By Firm Size</b>										
1-50	86,450	89,925	89,228	89,354	88,739	41.3%	27,218	27,507	33,638	376
51-100	19,239	20,343	20,323	19,891	19,949	9.3%	4,409	5,419	10,101	20
101-1000	63,550	66,628	68,279	66,452	66,227	30.8%	15,059	18,263	32,777	129
1001-5000	31,069	28,836	32,837	30,703	30,861	14.4%	7,704	10,253	12,822	84
5000+	8,077	9,944	9,245	8,590	8,964	4.2%	1,576	2,375	5,012	2
Unknown	0	1	0	0	0	0.0%	0	0	0	0



TABLE 3B.  
Employed Non-Client Persons with Dependents with HCA Medical Coverage

CY 2011	Number of Employed Non-Client Persons with Dependents		Annual Profile		
	YEARLY Average per Quarter	Employed Non-Client Persons	Percent of Total Employed Non-Client Persons	Average Quarterly Covered Lives Associated with Employed Non-Client Persons	Annual Months of HCA Coverage Associated with Employed Clients/Persons
<b>All Firms</b>	<b>214,741</b>	<b>100.0%</b>	<b>325,765</b>	<b>3,779,596</b>	<b>\$700,513,381</b>
<b>By Industry</b>					
Agriculture (11)	17,945	8.4%	34,356	403,121	\$74,456,031
Mining (21)	155	0.1%	335	3,890	\$726,178
Utilities (22)	215	0.1%	440	5,047	\$985,300
Construction (23)	11,805	5.5%	24,570	283,069	\$55,048,278
Manufacturing (31-33)	18,126	8.4%	34,673	401,617	\$76,143,988
Wholesale Trade (42)	7,747	3.6%	14,076	163,133	\$30,580,878
Retail Trade (44)	29,222	13.6%	36,997	428,432	\$81,173,153
Transportation/Warehousing (48)	5,698	2.7%	10,634	122,990	\$23,567,622
Information (51)	2,029	0.9%	3,080	35,242	\$6,451,858
Finance and Insurance (52)	4,380	2.0%	6,526	75,455	\$13,108,013
Real Estate (53)	3,991	1.9%	6,196	71,854	\$13,309,819
Professional/Technical (54)	5,165	2.4%	7,310	84,246	\$14,928,455
Management (55)	254	0.1%	375	4,373	\$792,568
Administrative/Waste (56)	14,921	6.9%	22,719	262,789	\$50,435,441
Educational Services (61)	9,603	4.5%	13,696	159,279	\$28,512,327
Health Care, Soc. Assistance (62)	32,290	15.0%	46,199	537,115	\$94,251,685
Arts and Entertainment (71)	5,492	2.6%	7,062	81,693	\$14,934,445
Accommodation and Food (72)	27,624	12.9%	30,234	351,948	\$64,719,810
Other Services (81)	13,301	6.2%	17,619	205,168	\$38,463,932
Other Government (92)	4,634	2.2%	8,412	96,272	\$17,349,601
Unknown	147	0.1%	260	2,863	\$574,001
<b>By Ownership Type</b>					
Public	17,809	8.3%	28,882	333,372	\$60,107,709
Private	196,932	91.7%	296,883	3,446,218	\$640,404,696
Unknown	0	0.0%	1	6	\$976
<b>By Firm Size</b>					
1-50	88,739	41.3%	132,158	1,535,524	\$286,431,008
51-100	19,949	9.3%	31,513	366,012	\$67,740,761
101-1000	66,227	30.8%	103,120	1,195,640	\$220,750,842
1001-5000	30,861	14.4%	46,248	535,860	\$98,106,355
5000+	8,964	4.2%	12,727	146,554	\$27,483,439
Unknown	0	0.0%	1	6	\$976

TABLE 4A.  
Total Employed Basic Health Plan Clients

	Number of Employed Basic Health Plan Clients										Percent of Total Employed BHP Clients	Yearly Average per Quarter		
	QUARTER				YEARLY Average per Quarter	1 to 261	262 to 455	More than 455	Unknown					
	1	2	3	4										
<b>All Firms</b>	<b>15,044</b>	<b>13,169</b>	<b>12,905</b>	<b>13,373</b>	<b>13,623</b>	<b>100.0%</b>	<b>5,909</b>	<b>4,232</b>	<b>3,431</b>	<b>50</b>				
<b>By Industry</b>														
Agriculture (11)	1,478	1,018	1,129	1,649	1,319	9.7%	481	366	471	1				
Mining (21)	7	4	4	1	4	0.0%	2	1	1	0				
Utilities (22)	9	9	8	6	8	0.1%	5	2	1	0				
Construction (23)	394	353	400	400	387	2.8%	185	100	102	0				
Manufacturing (31-33)	738	681	738	791	737	5.4%	211	213	314	0				
Wholesale Trade (42)	376	321	308	323	332	2.4%	99	73	159	2				
Retail Trade (44)	2,011	1,812	1,761	1,796	1,845	13.5%	664	600	580	2				
Transportation/Warehousing (48)	257	225	224	248	239	1.8%	83	72	82	1				
Information (51)	173	166	154	142	159	1.2%	85	35	36	3				
Finance and Insurance (52)	190	165	160	156	168	1.2%	44	52	72	0				
Real Estate (53)	223	219	202	183	207	1.5%	90	47	69	1				
Professional/Technical (54)	354	314	265	269	301	2.2%	158	84	58	1				
Management (55)	13	10	8	10	10	0.1%	4	3	4	0				
Administrative/Waste (56)	823	723	719	661	732	5.4%	348	210	170	4				
Educational Services (61)	1,213	1,184	962	1,009	1,092	8.0%	805	228	58	1				
Health Care, Soc. Assistance (62)	1,885	1,679	1,665	1,592	1,705	12.5%	657	584	460	5				
Arts and Entertainment (71)	363	358	334	316	343	2.5%	177	106	60	0				
Accommodation and Food (72)	2,753	2,301	2,249	2,299	2,401	17.6%	1,007	968	425	1				
Other Services (81)	1,533	1,357	1,311	1,277	1,370	10.1%	666	430	262	13				
Other Government (92)	234	247	285	240	252	1.8%	142	61	49	1				
Unknown	17	23	19	5	16	0.1%	0	0	0	16				
<b>By Ownership Type</b>														
Public	1,461	1,452	1,297	1,279	1,372	10.1%	901	318	137	17				
Private	13,583	11,717	11,608	12,094	12,251	89.9%	5,008	3,915	3,294	34				
Unknown	0	0	0	0	0	0.0%	0	0	0	0				
<b>By Firm Size</b>														
1-50	8,047	7,111	6,828	7,037	7,256	53.3%	3,210	2,276	1,726	44				
51-100	1,059	936	925	1,012	983	7.2%	372	306	305	1				
101-1000	3,682	3,189	3,183	3,439	3,373	24.8%	1,400	1,021	949	3				
1001-5000	1,853	1,520	1,578	1,494	1,611	11.8%	790	528	293	2				
5000+	403	413	391	391	400	2.9%	137	103	160	1				
Unknown	0	0	0	0	0	0.0%	0	0	0	0				

TABLE 4B.  
Total Employed Basic Health Plan Clients

CY 2011	Number of Employed Basic Health Plan Clients		Percent of Total Employed BHP Clients	Annual Profile		
	YEARLY Average per Quarter	13,623		Average Quarterly Covered Lives Associated with Employed BHP Clients	13,623	Annual Months of HCA Coverage Associated with Employed BHP Clients
<b>All Firms</b>	<b>13,623</b>	<b>100.0%</b>	<b>100.0%</b>	<b>13,623</b>	<b>151,523</b>	<b>\$29,489,406</b>
<b>By Industry</b>						
Agriculture (11)	1,319	9.7%		1,319	13,240	\$2,576,769
Mining (21)	4	0.0%		4	46	\$8,953
Utilities (22)	8	0.1%		8	94	\$18,294
Construction (23)	387	2.8%		387	4,359	\$848,349
Manufacturing (31-33)	737	5.4%		737	8,142	\$1,584,596
Wholesale Trade (42)	332	2.4%		332	3,666	\$713,477
Retail Trade (44)	1,845	13.5%		1,845	20,879	\$4,063,471
Transportation/Warehousing (48)	239	1.8%		239	2,673	\$520,219
Information (51)	159	1.2%		159	1,827	\$355,571
Finance and Insurance (52)	168	1.2%		168	1,860	\$361,993
Real Estate (53)	207	1.5%		207	2,345	\$456,384
Professional/Technical (54)	301	2.2%		301	3,404	\$662,486
Management (55)	10	0.1%		10	110	\$21,408
Administrative/Waste (56)	732	5.4%		732	8,175	\$1,591,019
Educational Services (61)	1,092	8.0%		1,092	12,551	\$2,442,676
Health Care, Soc. Assistance (62)	1,705	12.5%		1,705	19,103	\$3,717,826
Arts and Entertainment (71)	343	2.5%		343	3,888	\$756,683
Accommodation and Food (72)	2,401	17.6%		2,401	26,760	\$5,208,031
Other Services (81)	1,370	10.1%		1,370	15,422	\$3,001,430
Other Government (92)	252	1.8%		252	2,804	\$545,714
Unknown	16	0.1%		16	175	\$34,059
<b>By Ownership Type</b>						
Public	1,372	10.1%		1,372	15,649	\$3,045,608
Private	12,251	89.9%		12,251	135,874	\$26,443,798
Unknown	0	0.0%		0	0	\$0
<b>By Firm Size</b>						
1-50	7,256	53.3%		7,256	80,992	\$15,762,663
51-100	983	7.2%		983	10,808	\$2,103,453
101-1000	3,373	24.8%		3,373	37,225	\$7,244,730
1001-5000	1,611	11.8%		1,611	17,978	\$3,498,878
5000+	400	2.9%		400	4,520	\$879,682
Unknown	0	0.0%		0	0	\$0





## By Firm Tables

ABRIDGED

Employment of HCA Medical Assistance Clients and Persons  
with Dependents with HCA Medical Coverage by Firm:

**January and June 2011**

*NOTE: In the ABRIDGED version, tables, detail is provided for the top 10 firms. For other firms, see the full report available at: [www.dshs.wa.gov/rda](http://www.dshs.wa.gov/rda)*



**Table 5. Rank of Firms by Number of HCA Medical Clients, High to Low**

Rank	Employer	Worksheet Name
1	WAL-MART STORES INC	walmart
2	MCDONALDS CORPORATION	mcdonalds
3	SAFEWAY	safeway
4	THE KROGER CO	kroger
5	YUM! BRANDS INC	yumbrands
6	JACK IN THE BOX	jackinbox
7	ZIRKLE FRUIT COMPANY	zirkle
8	STEMILT GROWERS INC	stemiltgrw
9	TARGET CORPORATION	target
10	SEARS HOLDINGS CORPORATION	sears
11	SUBWAY RESTAURANTS	subway
12	GOODWILL INDUSTRIES INTERNATIONAL	goodwill
13	THE HOME DEPOT	homedepot
14	BURGER KING	burgerking
15	DINEEQUITY	dineequity
16	MACY'S INC	macys
17	DARDEN RESTAURANTS INC	dardenrest
18	RESCARE HOMECARE	rescare
19	J. C. PENNEY COMPANY INC	jcpenny
20	STARBUCKS CORPORATION	starbucks
21	DSHS	dshs
22	THE WENDYS COMPANY	wendys
23	COSTCO WHOLESALE CORPORATION	costco
24	BROETJE ORCHARDS	broetje
24	CHELAN FRESH MARKETING	chelanfresh
26	LOWE'S COMPANIES INC	lowes
27	CONAGRA FOODS INC	conagra
28	SUPERVALU INC	supervalu
29	UNIVERSITY OF WASHINGTON	uw
30	XEROX CORPORATION	xerox
31	TYSON FOODS INC	tyson
32	MULTICARE	multicare
33	YMCA	ymca
34	EXPRESS PERSONNEL	expresspers
35	ROSS STORES INC	rossdress
36	WALGREEN CO	walgreens
37	REGIS CORPORATION	regis
38	US ARMY	usarmy
39	CATHOLIC COMMUNITY SERVICES	cathcommserv
40	WASHINGTON STATE UNIVERSITY	wsu
41	DOLLAR TREE STORES INC	dollartree
42	RED ROBIN	redrobin
43	BORTON & SONS INC	bortonsons
44	KAHALA CORPORATION	kahala
45	WINCO FOODS INC	wincofoods
46	SHARI'S MANAGEMENT CORPORATION	sharis
47	DENNY'S CORPORATION	dennys
48	PUYALLUP TRIBE OF INDIANS	puyalluptrb
49	WASHINGTON FRUIT & PRODUCE	wafruit
50	BERKSHIRE HATHAWAY	berkhath
51	WASHINGTON BEEF LLC	wabeef
52	ABM INDUSTRIES INCORPORATED	abm

**Table 5. Rank of Firms by Number of HCA Medical Clients, High to Low**

Rank	Employer	Worksheet Name
53	EVANS FRUIT COMPANY	evansfruit
54	ALLEGIS GROUP	allegis
55	SEA MAR COMMUNITY HEALTH CENTERS	seamar
56	KNOWLEDGE UNIVERSE	knowledgeuniv
57	THE BLACKSTONE GROUP	blackstone
58	BOEING	boeing
59	MCDOUGALL & SONS INC	mcdougallsons
60	RITE AID	riteaid
61	ADDUS HEALTHCARE INC	addushealth
62	CHOICE HOTELS INTERNATIONAL	choicectl
63	WYNDHAM WORLDWIDE CORPORATION	wyndham
64	INTERCONTINENTAL HOTELS GROUP	ihg
65	UNITED PARCEL SERVICE INC	ups
66	MUCKLESHOOT INDIAN TRIBE	mucklesheettribe
67	7-ELEVEN INC	7eleven
68	RAINIER SCHOOL	rainiersch
69	RED LION HOTELS CORPORATION	redlionhotels
70	TJX COMPANIES INC	tjx
71	BARRETT BUSINESS SERVICES	barretbus
72	NORDSTROM INC	nordstrom
73	KALISPEL TRIBE OF INDIANS	kalispeltrb
74	PAPA MURPHY'S INTERNATIONAL INC	papamurphys
75	YAKIMA VALLEY FARM WORKERS CLINIC	yvfwc
76	ARBY'S RESTAURANT GROUP INC	arbys
77	WELLS FARGO & CO	wellsfargo
78	BEST WESTERN INTERNATIONAL INC	bestwestern
79	U.S. BANCORP	usbank
80	DOMINO'S PIZZA INC	dominospizza
81	KELLY SERVICES INC	kellyserv
82	US POSTAL SERVICE	usps
83	SERVICEMASTER	servicemaster
84	BANK OF AMERICA	bankofam
84	TACOMA SCHOOL DISTRICT	tacomaschl
86	CHESTERFIELD SERVICES	chesterfield
87	TULALIP TRIBES	tulaliptrb
88	TRUEBLUE INC	trueblue
89	WEST CORPORATION	westcorp
90	CHEVRON CORPORATION	chevron
91	SPOKANE SCHOOL DISTRICT	spokaneschl
92	CORPORATION FOR NATIONAL AND COMMUNITY SERVICE	corpnatlsvc
93	BLUE BIRD INC	bluebird
94	YAKAMA NATION	yakamanation
95	THE SEATTLE TIMES COMPANY	seattletimes
96	FEDEX CORPORATION	fedex
97	KOHL'S	kohls
98	GREAT CLIPS INC	greatclips
99	O'REILLY AUTO PARTS	oreilly
100	SEATTLE SCHOOL DISTRICT	seattleschl
101	BEST BUY CO INC	bestbuy
102	WASHINGTON STATE MIGRANT COUNCIL	wsmc
103	PROVIDENCE HEALTH	providencehlth
104	MANPOWER INC	manpower



**Table 5. Rank of Firms by Number of HCA Medical Clients, High to Low**

Rank	Employer	Worksheet Name
105	GROUP HEALTH COOPERATIVE	grouphealth
106	AUVIL FRUIT COMPANY	auvilfruit
107	COMCAST	comcast
107	VALUE VILLAGE	valuevillage
109	SALVATION ARMY	salvationarmy
110	MONSON FRUIT COMPANY	monsonfruit
111	KOREAN WOMEN'S ASSOCIATION	kwa
112	YAKIMA SCHOOL DISTRICT	yakimaschl
113	CRUNCH PAK	crunchpak
114	NORTHWEST CENTER INDUSTRIES	northwestctrind
115	GILBERT ORCHARDS	gilberorch
116	EVERGREEN SCHOOL DISTRICT	evergreenschl
116	THE GAP INCORPORATED	gap
118	THE FLAT TOP RANCH	flattopranch
119	J. R. SIMPLOT COMPANY	jrplot
119	WYCKOFF FARMS INC	wyckoffarms
121	MARRIOTT INTERNATIONAL INC	mariott
122	COMPASS GROUP PLC	compassgrp
123	AMBITIONS	ambitions
124	FIESTA FOODS	fiestafoods
125	PASCO SCHOOL DISTRICT	pascoschl
126	JPMORGAN CHASE & CO	jpmorganchase
127	ALASKA AIR GROUP	alaskaair
128	ST JOSEPH HOSPITAL	stjosephosp
129	SQUAXIN ISLAND INDIAN TRIBE	squaxintrb
130	CITY OF SEATTLE	cityseattle
130	VALLEY FRUIT	valleyfruit
132	MERRILL GARDENS	merrillgardens
133	GROCERY OUTLET INC	groceryoutlet
134	LIFE CARE CENTERS OF AMERICA	lifecarectr
135	LES SCHWAB	lesschwab
136	HAGGEN FOOD & PHARMACY	haggens
136	US DEPT OF DEFENSE	usdeptdef
138	TRIDENT SEAFOODS	tridentseafoods
138	VOLT INFORMATION SCIENCES INC	volt
140	LITTLE CAESARS PIZZA	littlecaesars
141	TOYS 'R' US	toysrus
142	US NAVY	usnavy
143	FIRSTGROUP PLC	firstgrp
144	AZTECA MEXICAN RESTAURANT	azteca
144	SEATTLE GOODWILL	seattlegoodwill
144	SL START	slstart
147	MATSON FRUIT COMPANY	matsonfruit
148	EPIC	epic
148	RANDSTAD	randstad
150	BP PRODUCTS NORTH AMERICA INC	bp
151	WASHINGTON POTATO	wapotato
152	CHEHALIS TRIBE	chehalistrb
152	SERVICE ALTERNATIVES	servicealternatives
154	SHOPKO	shopko
155	AMICABLE HEALTH CARE	amicablehealth
156	KING COUNTY	kingco

**Table 5. Rank of Firms by Number of HCA Medical Clients, High to Low**

Rank	Employer	Worksheet Name
156	SUNRISE SERVICES	sunriseserv
158	SECURITAS AB	securitas
159	BIG LOTS INC	biglots
159	SACRED HEART MEDICAL CENTER	sacredheartmed
161	VIRGINIA MASON HOSPITAL	virginiamason
162	DOUGLAS FRUIT	douglasfruit
162	NATIONAL FOOD CORP	nationalfood
164	KENT SCHOOL DISTRICT	kentschl
165	CUSTOM APPLE PACKERS INC	customapple
166	TACOMA GOODWILL	tacomagoodwill
167	PRIDE PACKING	pridepack
168	ROCKWOOD CLINIC	rockwoodclin
169	JIFFY LUBE	jiffylube
170	SODEXO INC	sodexho
171	PETCO	petco
172	PANDA EXPRESS	pandaex
173	GREAT WOLF LODGE	greatwolf
173	SPOKANE TRIBE OF INDIAN	spokanetribe
175	DISH NETWORK	dishnetwork
176	VALLEY MEDICAL CENTER	valleymedctr
177	AMAZON.COM	amazon
177	OLYMPIC FRUIT	olympicfruit
179	CENTERFORCE	centerforce
179	FOSTER FARMS	fosterfarms
179	YOKE'S FRESH MARKETS	yokes
182	ACCOR HOTELS	accor
182	BENEFICIAL IN-HOME CARE	beneficialinhome
182	DAVENPORT HOTEL	davenportshot
182	PAPA JOHNS	papajohns
186	YWCA	ywca
187	TELETECH HOLDINGS INC	teletech
188	ER SOLUTIONS	ersolutions
188	MICHAEL'S STORES	michaelsstores
190	BETHEL SCHOOL DISTRICT	bethelschl
190	YELLOW CAB	yellowcab
192	COMMUNITY HEALTH CARE	commhlthcare
192	ST VINCENT DE PAUL	stvincentdepaul
194	ZIP'S DRIVE IN	zips
195	CLARK COLLEGE	clarkcol
196	AUTO ZONE	autozone
196	YAKIMA VALLEY MEMORIAL HOSPITAL	yakimavalhosp
198	VANCOUVER SCHOOL DISTRICT	vancouver Schl
199	OLD COUNTRY BUFFET	oldcountrybuf
200	PITNEY BOWES	pitneybowes
200	SELECT STAFFING	selectstaff
200	VISITING ANGELS	visitingangels
203	VANCOUVER CLINIC	vancouverclin
204	CPC INTERNATIONAL	cpcinter
204	NISQUALLY INDIAN TRIBE	nisquallytrb
204	OFFICE DEPOT	officedepot
207	PETSMART	petsmart
208	NORTHWEST HORTICULTURE	nwhort

**Table 5. Rank of Firms by Number of HCA Medical Clients, High to Low**

Rank	Employer	Worksheet Name
208	PAYLESS SHOE SOURCE	paylessshoe
208	RADIO SHACK	radioshack
211	WESTPORT SHIPYARD	westportship
212	COLUMBIA FRUIT PACKERS INC	columbiafruit
212	FEDERAL WAY SCHOOL DISTRICT	federalwayschl
214	PROVIDENCE	providence
215	BARTELL DRUGS	bartelldrug
215	NW MANAGEMENT	nwmanage
217	BAKER PRODUCE INC	bakerproduce
218	ARAMARK	aramark
218	SKY CHEFS	skychefs
220	TEREX CORPORATION	terex
221	BOYS & GIRLS CLUB	boysgirlsclub
222	CENTRAL WASHINGTON HOSPITAL	ctrwahosp
222	TREE TOP	treetop
224	ACE HARDWARE CORPORATION	acehard
225	TRAVIS PATTERN	travis patt
226	AVALON HEALTH CARE	avalonhealth
226	HIGHLINE SCHOOL DISTRICT	highlineschl
226	KENNEWICK SCHOOL DISTRICT	kennewickschl
229	ROUNDTABLE PIZZA	roundtable
230	HARBORVIEW MEDICAL CENTER	harborviewmed
231	DAVITA INC	davita
231	OUTBACK STEAKHOUSE	outbacksteak
233	GENE JUAREZ SALONS	genejuarez
233	ROYAL DUTCH SHELL PLC	shell
233	THE CHEESECAKE FACTORY	cheesecakefact
236	PACIFIC SEAFOOD	pacseafod
236	PUYALLUP SCHOOL DISTRICT	puyallupschl
238	MAXIM HEALTH CARE	maximhealth
239	PEACE HEALTH	peacehealth
239	PIONEER HUMAN SERVICES	pioneerhumanserv
241	DRAPER VALLEY FARMS	drapervalley
241	QUIZNO'S SUB	quiznos
241	SWEDISH HEALTH SERVICES	swedishhealth
244	SKAGIT VALLEY HOSPITAL	skagitvalleyhosp
245	SYKES ENTERPRISES	sykes
246	KIDS COUNTRY	kidscountry
247	BLUE STAR GROWERS	bluestar
247	CUSTOM ORCHARDS	customorch
247	VERIZON WIRELESS	verizon
250	COLUMBIA REACH PACK	columbiareach
251	COMMUNITY LIVING	commliv
251	LUMMI NATION	lummination
253	CENTRAL VALLEY SCHOOL DISTRICT	ctrvalleyschl
253	WAREHOUSE DEMO	warehousedemo
255	APPLE KING	appleking
256	CKE RESTAURANTS INC	ckerest
256	EASTERDAY FARMS	easterdayfarms
256	THE HOLLAND INC	holland
256	WASHINGTON BULB	wabulb
260	AUTOGRILL SPA	autogrill

**Table 5. Rank of Firms by Number of HCA Medical Clients, High to Low**

Rank	Employer	Worksheet Name
260	CLOVER PARK SCHOOL DISTRICT	cloverparkschl
260	JOANN FABRICS	joannfab
260	MOSES LAKE SCHOOL DISTRICT	moseslakeschl
260	NATIONAL GUARD	natlguard
260	VOLUNTEERS OF AMERICA	volunteersam
266	OTHELLO SCHOOL DISTRICT	othelloschl
266	YAKIMA COUNTY	yakimaco
268	BYBEE FOODS	bybee
268	KADLEC HOSPITAL	kadlec
268	MORNINGSIDE	morningside
271	SNOQUALMIE CASINO	snoqualmiecasino
272	VICTORIA'S SECRET	victoriassecret
273	QUINAULT BEACH RESORT	quinaultbeachres
274	SOUTHWEST WASHINGTON MEDICAL CTR	swwamedctr
275	DOVEX FRUIT COMPANY	dovexfruit
275	QUINAULT INDIAN NATION	quinaultindnat
275	STAPLES INC	staples
278	WASTE CONNECTIONS	wasteconn
278	WORK OPPORTUNITIES	workopp
280	SENIOR LIFE RESOURCES	srliferes
281	AAFES	aafes
281	SNOKIST GROWERS	snokist
283	ALLAN BROTHERS	allanbros
283	CHIAWANA ORCHARDS	chiawanaororch
283	H&R BLOCK	hrblock
283	VALLEY ROZ	valleyroz
287	FOREVER 21	forever21
287	KEY BANK	keybank
287	RENTON SCHOOL DISTRICT	rentonschl
290	STATE FARM INSURANCE	statefarmins
290	SUNNYSIDE SCHOOL DISTRICT	sunnysideschl
290	SUNRISE STAFFING	sunrisestaff
293	BAIN CAPITAL	baincap
293	EAGLE HEALTHCARE	eaglehealth
293	STADELMAN FRUIT	stadelmanfruit
296	ELMVIEW	elmview
296	LA FITNESS	lafitness
298	AUBURN SCHOOL DISTRICT	auburnschl
298	WINDERMERE REAL ESTATE	windermere
300	LARSON FRUIT	larsonfruit
300	MANOR CARE	manorcare
300	MENZIES AVIATION	menziesaviation
300	REI	rei
300	REMEDY	remedy
305	IVARS	ivars
305	NORTHWEST STAFFING	nwstaff
305	REGAL CINEMAS	regalcinemas
305	SILVER DOLLAR CASINO	silverdollarcas
305	TACO DEL MAR	tacodelmar
305	WASTE MANAGEMENT	wastemanage
311	AMTECH LLC	amtech
311	SUPPLEMENT SCIENCES	supplsciences

**Table 5. Rank of Firms by Number of HCA Medical Clients, High to Low**

Rank	Employer	Worksheet Name
311	UNDERWOOD FRUIT	underwoodfruit
311	WENATCHEE SCHOOL DISTRICT	wenatcheeschl
315	LABOR WORKS	laborworks
315	MC CAIN FOODS	mccainfoods
315	SANMAR CORPORATION	sanmar
315	SKILS'KIN	skilskin
315	THE SUQUAMISH TRIBE	suquamishtrb
320	BROOKDALE SENIOR LIVING	brookdalesrlvng
320	MASSAGE ENVY	massageenvy
322	CHIPOTLE MEXICAN GRILL	chipotlemexgrill
322	COLUMBIA COLSTOR	columbiacolstor
322	MAD ANTHONY'S INC	madanthonys
325	COLVILLE TRIBE	colvilletribe
325	CRISTA MINISTRIES	cristamin
325	ROSAUERS SUPERMARKETS	rosauers
325	ROY FARMS	royfarms
329	CITY OF SPOKANE	cityspokane
329	DEPT OF CORRECTIONS	deptcorr
329	EDMONDS SCHOOL DISTRICT	edmondsschl
329	PRICE COLD STORAGE	pricecoldstor
333	BED BATH & BEYOND	bedbath
334	CRANE & CRANE	cranecrane
334	OLYMPIC COLLEGE	olympiccol
336	MILGARD MANUFACTURING	milgard
337	24 HOUR FITNESS	24hrfit
337	BATH AND BODY WORKS	bathbodyworks
337	QUINCY FOODS	quincyfoods
337	ST JOSEPH MEDICAL CENTER	stjosephmedctr
341	BIG 5 SPORTING GOODS	big5sport
341	CARDINAL GLASS	cardglass
341	CHARTER COMMUNICATIONS	chartercomm
341	EVERETT CLINIC	everettclinic
341	NORTHERN FRUIT	nofruit
341	NORTHWEST HOSPITAL	nwhosp
341	PLANNED PARENTHOOD	plannedparent
341	SKCAC INDUSTRIES	skcac
349	AT WORK	atwork
349	GREEN ACRE FARMS INC	greenacres
349	KING FUJI	kingfuji
349	LOWER COLUMBIA COLLEGE	lcc
349	WENATCHEE VALLEY MEDICAL CENTER	wenatcheevalmedctr
354	ELDORADO STONE LLC	eldoradostone
354	FAMILY HEALTH CENTER	famhlthctr
354	HEALTHPOINT	healthpoint
354	TERRA STAFFING	terrastaff
358	CONGDON ORCHARDS	congdonorch
358	NOOKSACK INDIAN TRIBE	nooksacktrb
360	GREAT AMERICAN CASINO	greatamcas
360	STARWOOD HOTELS & RESORTS WORLDWIDE INC	starwood
360	TAYLOR SHELLFISH	taylorshell
360	TRAVIS INDUSTRIES	travisind
364	OVERLAKE HOSPITAL	overlakehosp

**Table 5. Rank of Firms by Number of HCA Medical Clients, High to Low**

Rank	Employer	Worksheet Name
364	T MOBILE	tmobile
366	PACIFIC MARKET RESEARCH	pacificmktres
367	BLACK ANGUS	blackangus
367	CENTRAL WASHINGTON UNIVERSITY	cwu
367	COLUMBIA DISTRIBUTING	columbiadistr
367	HUNTWOOD INDUSTRIES	huntwoodind
367	MONEYTREE	moneytree
367	SKAGIT GARDENS	skagitgard
367	TAHOMA ASSOCIATES	tahomaassoc
374	ADECCO	adecco
374	DELTA AIRLINES	deltaair
374	NATIONAL FROZEN FOODS	nationalfrozenfood
374	PERSONNEL SOURCE	personnelsource
374	PUERTO VALLARTA	puertovall
374	SMART TALENT	smarttalent
380	FIRCREST SCHOOL	fircrestschl
380	ORONDO FRUIT	orondofruit
380	PREMERA BLUE CROSS	premerablue
380	STANDARD PARKING	standardpark
384	DEPT OF TRANSPORTATION	depttrans
384	FAMOUS DAVES	famousdaves
384	THE MARKETS LLC	marketsllc
384	WEST VALLEY SCHOOL DISTRICT	wvalleyschl
388	CONOCO PHILLIPS	conocophl
388	MAID BRIGADE	maidbrigade
388	NAPA AUTO PARTS	napaauto
391	FARMER'S INSURANCE	farmersins
391	STERLING SAVINGS BANK	sterlingbank
393	COMPASS ONE LLC	compassone
393	SAKUMA BROTHERS FARMS	sakumabros
393	SMITH GARDENS	smithgard
393	TRANS OCEAN PRODUCTS	transocean
397	AT&T	att
397	NORTHSHORE SCHOOL DISTRICT	northshoreschl
397	PESHASTIN HI-UP	peshastiniup
397	RICHLAND SCHOOL DISTRICT	richlandschl
397	SCHWARTZ BROTHERS	schwartzbros
397	WHOLE FOODS	wholefoods
403	MANSON GROWERS COOPERATIVE	mansongrow
403	UPPER SKAGIT INDIAN TRIBE	upperskagittrib
405	EVERGREEN HOSPITAL	evergreenhosp
405	THE CHILDREN'S PLACE	childrensplace
407	HIGHLAND FRUIT	highlandfruit
407	SHILO INNS	shiloinn
407	SPOKESMAN REVIEW	spokesmanrev
407	SWIFT TRANSPORTATION	swiftrans
407	VALLEY HOSPITAL	valleyhosp
412	BRIGHT HORIZONS	brighthor
412	RIVERSTONE OPERATING CO	riverstoneopco
412	SKAGIT VALLEY COLLEGE	skagitvalleycol
412	TESORO CORPORATION	tesoro
416	BI-MART	bimart

**Table 5. Rank of Firms by Number of HCA Medical Clients, High to Low**

Rank	Employer	Worksheet Name
416	DAL GLOBAL SERVICES	dalblobal
416	LUTHERAN COMMUNITY SERVICES	luthercommserv
416	MOLLY MAIDS	mollymaids
416	PACIFIC MARITIME	pacmaritime
416	TWIN CITY FOODS INC	twincityfoods
422	KENNEWICK GENERAL HOSPITAL	kennewickhosp
422	NORTHSTAR RESTAURANTS INC	northstarrest
422	TAQUERIA EL RINCONSITO	taqelrinconsito
422	WESTERN WASHINGTON UNIVERSITY	wwu
426	BATTLE GROUND SCHOOL DISTRICT	battlegroundschl
426	DOUBLE DIAMOND	dbldiamond
426	HIGHLINE MEDICAL CENTER	highlinemedctr
426	RESTAURANTS UNLIMITED	restaurunlmtd
426	STAFF MARK	staffmark
426	SUNRISE SENIOR LIVING	sunrisesrliving
426	TACOMA COMMUNITY COLLEGE	tacomacc
426	VADIS NORTHWEST	vadisnw
434	EMERALD CITY PIZZA	emeraldcitypizza
434	EVERETT SCHOOL DISTRICT	everettschl
434	OCEAN BEAUTY SEAFOODS	oceanbeauty
434	POLYCLINIC	polyclinic
434	SALLY'S BEAUTY SUPPLY	sallysbeauty
434	SENTRY CREDIT	sentrycredit
440	BANNER BANK	bannerbank
440	HOLY FAMILY HOSPITAL	holyfamhosp
440	MAKAH TRIBAL COUNCIL	makahtb
440	QUINCY SCHOOL DISTRICT	quincyschldist
440	RADER FARMS	raderfarms
440	SIERRA PACIFIC	sierrapac
440	YAKIMA REGIONAL HOSPITAL	yakimareghosp
447	HARRISON HOSPITAL	harrisonhosp
447	VARSITY CONTRACTORS	varsitycontr
449	SONIC	sonic
449	STRAND ORCHARDS	strandorch
451	BREWSTER HEIGHTS	brewsterheights
451	GYMBOREE	gymboree
451	MANKE LUMBER	mankelumber
454	AMERICAN MANAGEMENT SERVICES	ammanagement
454	BARNES & NOBLE	barnesnob
454	CRAZY MOOSE CASINO	crazymoosecas
454	GRANDVIEW SCHOOL DISTRICT	grandviewschl
454	ROBERT HALF INTERNATIONAL	roberthalf
454	SKOOKUM EDUCATIONAL	skookumeduc
454	SUNLIGHT SUPPLY	sunlightsup
454	TOPPENISH SCHOOL DISTRICT	toppenishschl
462	CLAIRE'S BOUTIQUE	clairebtque
462	DOUBLE S ORCHARDS	dblsorch
462	VEOLIA TRANSPORTATION	veoliatransp
462	WESTERN STATE HOSPITAL	wsh
466	COAST SEAFOODS	coastseafoods
466	MEMORIAL HOSPITAL	memorialhosp
466	RIVERSIDE CASINO	riversidecasino

**Table 5. Rank of Firms by Number of HCA Medical Clients, High to Low**

Rank	Employer	Worksheet Name
469	CENTRALIA COLLEGE	centraliacol
469	COMMUNITY ACTION	communityaction
469	DIRECT TV	directtv
469	EAST VALLEY SCHOOL DISTRICT	eastvalleyschldist
469	GAMESTOP	gamestop
469	LIBERTY DAIRY	libertydairy
469	RENT A CENTER	rentacenter
469	RESERS FINE FOODS	resers
469	WALLA WALLA SCHOOL DISTRICT	wallawallaschl
478	AGRIMACS	agrimacs
478	BELLINGHAM SCHOOL DISTRICT	bellinghamschl
478	CASINO CARIBBEAN	casinocarib
478	FRANKLIN PIERCE SCHOOL DISTRICT	franklinpierceschl
478	MAZATLAN RESTAURANT	mazatlanrest
478	RGIS INVENTORY	rgisinv
478	YAKIMA VALLEY ORCHARDS	yakimavalorch
485	ANGEL OF THE WINDS	angelwinds
485	CENTERPLATE	centerplate
485	EMERITUS CORP	emerituscorp
485	MARY KAY COSMETICS	marykay
485	OBERTO SAUSAGE CO	oberto
485	OFFICE MAX	officemax
485	PEDIATRIC ASSOCIATES	pediatricassoc
485	SUN PACIFIC ENERGY	sunpacificenerg
485	TRIPLE B CORP	tripleb
494	CM HOLTZINGER	cmholtz
495	COMMAND CENTER INC	commandctr
495	OSTROM FARMS	ostromfarms
495	VAN WELL NURSERY	vanwellnurs
495	YAKIMA FRUIT AND COLD STORAGE	yakimafruit
499	OIL CAN HENRY'S	oilcanhenrys
499	SUQUAMISH TRIBE	suquamishtribe
501	BELLEVUE SCHOOL DISTRICT	bellevueschl
501	FASHION LADY BUG	fashionladybug
501	HIGHLINE COMMUNITY COLLEGE	highlinecc
501	WAPATO SCHOOL DISTRICT	wapatoschl
501	WESLEY HOMES	wesleyhomes
506	ALLIED BARTON SECURITY	alliedbarton
506	ARMY NATIONAL GUARD	armynatlg
506	COLUMBIA BASIN HEALTH	columbiabashlth
506	PAML	paml
506	SHELTON SCHOOL DISTRICT	sheltonschl
506	UWAJIMAYA	uwajimaya
506	VA HOSPITAL	vahosp
513	ANDERSON HAY & GRAIN CO	andersonhay
513	CLAIM JUMPER	claimjumper
513	LA PETITE ACADEMY	lapetiteacad
513	MMP ORCHARDS	mmporch
517	CARLYLE INC	carlyleinc
517	EL SOMBRERO	elsombrero
517	LINCARE	lincare
517	PIERCE COLLEGE	piercecol



**Table 5. Rank of Firms by Number of HCA Medical Clients, High to Low**

Rank	Employer	Worksheet Name
517	ST JOHNS MEDICAL CENTER	stjohnsmed
517	TAYLOR ORCHARDS LLC	taylororchards
523	ANDREWS INTERNATIONAL	andrewsintl
523	CHILDREN'S HOME SOCIETY	childrenshome
523	GOLDEN CORRAL	goldencorral
523	HARRISON MEDICAL CENTER	harrisonmedctr
523	JOHNSON FOODS INC	johnsonfoods
523	PIER 1 IMPORTS	pier1imp
523	PIONEER CABLE	pioneercable
523	ST FRANCIS HOSPITAL	stfrancishosp
531	C & O NURSERY	conurs
531	CHARLIES PRODUCE	charliesprod
531	ELITE HOME CARE	elitehome
531	FRANZ BAKERY	franzbak
531	INNOVATIVE SERVICES	innovsvcs
531	LAKELAND VILLAGE	lakelandvil
531	SKILLS INC	skillsinc
538	EVERGREEN HEALTH CARE	evergreenhealth
538	HOME CARE OF WASHINGTON	homecarewa
538	KITSAP TENANT SUPPORT	kitsaptensup
538	MINI SKOOL	miniskool
538	TRADER JOES	traderjoes
543	FAMILY HOME CARE	familyhomecare
543	GOURMET TRADING CO	gourmettrade
543	HABITAT FOR HUMANITY	habitathuman
543	HUMANIX	humanix
543	ICON LLC/KRISPY KREME	iconllc
543	ISLAND HOSPITAL	islandhosp
543	ORANGE CAB	orangecab
543	WILLOW DRIVE NURSERY	willowdrnurs
551	CROSSMARK	crossmark
551	INLAND IMAGING	inlandimg
551	NEIGHBORCARE HEALTH	neighborcare
551	PROVIDENCE HOSPITAL	providencehost
555	BRIGHT NOW DENTAL	brightnowdent
555	FERNDALE SCHOOL DISTRICT	ferndaleschl
555	SEATTLE GOURMET FOODS	seattlegourmet
555	WEYERHAEUSER COMPANY LIMITED	weyerhauser
555	WILLAMETTE DENTAL	willamettedental
555	WILLOW SPRINGS	willowsprings
561	ALLEGIANCE STAFFING	allegiancestaff
561	BELLEVUE COLLEGE	bellevuecol
561	EDWARD JONES	edwardjones
561	EMPLOYER'S OVERLOAD	employersover
561	EQUITY RESIDENTIAL	equityresdntl
561	LIFE WORKS	lifeworks
561	PRO BUILD	probuild
568	ADVANTAGE IQ	advantageiq
568	CABELAS	cabelas
568	CBHA	cbha
568	CHILDREN'S HOSPITAL	childrenshosp
568	CHRISTINE ALEXANDER INC	chrisalex

**Table 5. Rank of Firms by Number of HCA Medical Clients, High to Low**

Rank	Employer	Worksheet Name
568	DURHAM SCHOOL SERVICES	durhamschlsvcs
568	NEIGHBORHOOD HOUSE	neighborhouse
568	PROVAIL	provail
576	EMPLOYMENT SECURITY DEPT	esd
576	REGENCE BLUE SHIELD	regenceblueshield
576	ROMAN CASINO	romancasino
576	SMITH FROZEN FOODS	smithfroz
576	SOUND FAMILY MEDICINE	soundfammed
576	TRIUMPH TREATMENT	triumphtx
582	ALL STAR STAFFING	allstarstaff
582	SENSKE	senske
582	WENATCHEE VALLEY CLINIC	wenatcheevalclin
582	YAKIMA NEIGHBORHOOD HEALTH	yakimaneighhlth
586	CHEWELAH CASINO	chewelahcas
586	CONFEDERATED TRIBES	confederatedtribes
586	COWICHE GROWERS	cowichegrow
586	HEALTH CARE SERVICES	hlthcaresvcs
586	JOHN I HAAS INC	johnihaas
586	MT ADAMS ORCHARDS	mtadamsorch
586	PROSSER SCHOOL DISTRICT	prosserschl
586	SPOKANE MENTAL HEALTH	spokanemntlhlth
586	SUMMIT DRYWALL INC	summitdrywall
595	HARMONY HOUSE	harmonyhouse
595	KYLE MATHISON ORCHARDS	kylemathisonorch
595	MILITARY RESERVES	miltyreserves
595	OXFORD SUITES	oxfordsuites
599	COCA COLA	cocacola
599	LONGVIEW SCHOOL DISTRICT	longviewschl
599	MAR JON LABOR LLC	marjonlabor
599	ROCHE FRUIT	rochefruit
603	CROTHALL HEALTHCARE INC	crothallhealthcare
603	EDMONDS COMMUNITY COLLEGE	edmondssc
603	FOSS HOME	fosshome
603	KINDRED NURSING CENTERS	kindrednurs
603	NATIONAL MAINTENANCE	natlmaintenance
603	NAVY EXCHANGE	navyexch
603	PUBLIC STORAGE	publicstorage
603	SKAMANIA LODGE	skamanialodge
603	SKIPPER'S	skippers
603	WAFERTECH	wafertech
613	ARC OF SPOKANE	arcspokane
613	BECU	becu
613	ZIP TRIP	ziptrip
616	COEUR D'ALENE CASINO	coeurdalcas
616	HERTZ	hertz
616	HOLLAND AMERICA LINE	hollandamline
616	LAS MARGARITAS	lasmargaritas
616	NORTH THURSTON SCHOOL DISTRICT	nothurstonschl
616	NUTRITION NOW	nutritionnow
616	TOTAL CARE	totalcare
623	BOISE CASCADE	boiseasc
623	FIVE D FARMS	fivedfarms

**Table 5. Rank of Firms by Number of HCA Medical Clients, High to Low**

Rank	Employer	Worksheet Name
623	INDEPENDENT FOOD	independentfood
623	LUMBERMENS	lumbermans
623	MILL BAY CASINO	millbaycas
623	SPOKANE INDUSTRIES	spokaneind
629	ANDERSEN DAIRY	andersendairy
629	C & D ZODIAC INC	cdzodiac
629	HERITAGE UNIVERSITY	heritageuniv
629	IRONHORSE CASINO	ironhorsecas
629	LA HACIENDA	lahacienda
629	LIFE FORCE SERVICES	lifeforcesvcs
629	MUKILTEO SCHOOL DISTRICT	mukilteoschl
629	PUGET SOUND NAVAL SHIPYARD	pugetsoundnaval
629	RICHMOND BEACH REHAB	richmondbeachreh
629	THE COLUMBIAN	columbian
629	THE RAM	ram
629	US HEALTHWORKS	ushealthworks
629	WIS INTERNATIONAL	wisintl
629	WORLD VISION	worldvision
643	ACE CASH EXPRESS	acecash
643	CASCADIAN BUILDING	cascadianbldg
643	CENTER PARTNERS	centerpartners
643	FRITO-LAY	fritolay
643	GENIE MANUFACTURING	geniemanuf
643	GONZAGA UNIVERSITY	gonzagau
643	NAVOS	navos
643	SENIOR SERVICES	seniorsvcs
651	CENTRAL WA COMP MENTAL HEALTH	ctrwamntlhlth
651	RUBY TUESDAY	rubytues
653	CANTERBURY HOUSE	cantrbryhouse
653	CHIEF ORCHARDS	chieforch
653	LANDMARK CARE CENTER	landmarkcarectr
653	OLD SPAGHETTI FACTORY	oldspaghfac
653	PRINCE TELECOM INC	princetele
658	CHILDRENS VILLAGE	childrensvill
658	CONRAD ORCHARDS	conradorch
658	J&B ORCHARDS	jborch
658	JANICKI INDUSTRIES	janickiind
658	MACAU CASINO	macaucas
658	MAKSU INC	maksu
658	PACE STAFFING NETWORK	pacestaff
658	ROADLINK	roadlink
658	ROYAL PARK CARE CENTER	royalparkcare
658	SCAFCO CORPORATION	scafco
658	ST MICHELLE WINE ESTATES	stmichwine
669	COLUMBIA BASIN HOSPITAL	columbiabasinhosp
669	EMERALD CARE	emeraldcare
669	OLYMPIC MEDICAL CENTER	olympicmedctr
669	OORD DAIRY	oorddairy
669	OPPORTUNITY COUNCIL	opportunitycouncil
669	RED CROSS	redcross
669	ROYAL TURF FARMS	royalturffarms
676	ALLSTATE INSURANCE	allstateins

**Table 5. Rank of Firms by Number of HCA Medical Clients, High to Low**

Rank	Employer	Worksheet Name
676	AVIS RENT A CAR	avis
676	BECHTEL	bechtel
676	LA CLINICA	laclinica
676	MOUNT VERNON SCHOOL DISTRICT	mtvernonschl
676	PERKINS	perkins
676	RIVERSTONE RESIDENTIAL	riverstoneres
676	THE CLEANING AUTHORITY	cleanauth
676	US AIR FORCE	usairforce
676	WASHINGTON CRAB	wacrab
686	BRIGGS NURSERY	briggsnurs
686	CITY OF YAKIMA	cityyakima
686	DEL MONTE	delmonte
686	JELD-WEN	jeldwen
690	ADVANCE AMERICA	advanceam
690	HOGUE RANCHES INC	hogueranch
690	IRS	irs
690	MILLENNIA HEALTHCARE	millenniahlthcare
690	MUCHAS GRACIAS	muchasgracias
695	KITSAP COMMUNITY RESOURCES	kitsapcommres
695	YELM SCHOOL DISTRICT	yelmschl
697	BRANDT MANAGEMENT	brandtmgmt
697	COLUMBIA VALLEY FRUIT	columbiavlyfruit
697	KELLER WILLIAMS REALTY	kellerwilliams
697	THE EVERETT CLINIC	everettclin
701	CINTAS	cintas
701	PEOPLE FOR PEOPLE	peopleforpeople
701	RS MEDICAL	rsmed
701	TEUFEL NURSERY INC	teufelnurs
705	PENGUIN WINDOWS	penguinwindows
705	PIERCE COUNTY SECURITY	piecsecsecurity
705	STITA TAXI	stitataxi
705	SWINOMISH CASINO	swinomishcas
705	WESTERN MATERIALS	westernmater
710	CHIPS CASINO	chipscas
710	D & L FOUNDRY	dlfoundry
710	LYNDEN DOOR INC	lyndendoor
710	OLSEN BROTHERS RANCHES INC	olsenbros
710	WALT'S WHOLESALE MEATS	waltwholemeats
715	ARTHUR J DENHOED INC	denhoed
715	BROADWAY CAB	broadwaycab
715	COW PALACE	cowpalace
715	ENTERPRISE RENT A CAR	enterprrentacar
715	HANEY TRUCK LINE	haneytruck
715	HOUSING AUTHORITY	housauth
715	ROWE FARMS	rowefarms
715	SERVPRO	servpro
715	SHAW VINEYARDS	shawvineyard
715	YAKAMA FOREST PRODUCTS	yakamaforest
725	CARDINAL HEALTH	cardinalhlth
725	GIRARD WOOD PRODUCTS	girardwood
725	MERCER CANYON	mercercanyon
725	OCEAN GOLD	oceangold

**Table 5. Rank of Firms by Number of HCA Medical Clients, High to Low**

Rank	Employer	Worksheet Name
725	VALLEY SCHOOL DISTRICT	valleyschldist
730	ELITE FUNDRAISING	elitefundr
730	EVEREST COLLEGE	everestcol
730	KERSHAW SUNNYSIDE RANCH INC	kershawsunnyside
733	DAPC	dapc
733	FUGACHEE ORCHARDS	fugacheeorch
733	MINER'S DRIVE-IN	minersdrivein
733	ST CLARE HOSPITAL	stclairehosp
733	YOU & I CONSTRUCTION	you&iconstr
738	SAMARITAN HEALTHCARE	samaritanhealth
739	CORINTHIANS HEALTHCARE	corinthianshlth
739	INTERNATIONAL PAPER	intlpaper
741	REGENCY CARE CENTER	regencycarectr
741	US CASTINGS	uscastings
743	COUNTRY MORNING FARMS	countrymornfarm
743	FRONTIER CONSTRUCTION	frontierconst
743	GENERAL DYNAMICS	generaldynamics
746	CAREER PATH SERVICES	careerpathsvcs
746	HIGH GATE SENIOR LIVING	highgatesenliv
746	OASIS FARMS INC	oasisfarms
749	GCA SERVICES GROUP	gcasvcsgrp
749	STERLING INTERNATIONAL	sterlingintl
749	US CENSUS BUREAU	uscensus
752	GOLDEN GATE	goldengate
752	SPOKANE COUNTY	spokanecty
752	TAPANI UNDERGROUND	tapaniundergr
755	AGRINORTHWEST	agrinw
756	TRIUMPH COMPOSITE	triumphcomp
757	PRAIRIE ELECTRIC	prairieelec
757	TRC STAFFING	trcstaff
759	TACOMA RESCUE MISSION	tacomarescmis
760	G&K SERVICES	gksvcs
760	KAISER ALUMINUM	kaiseralum
760	US DIGITAL	usdigital
763	HALME CONSTRUCTION	halmeconstr
764	ROTSCHY INC	rotschy

## 0. WASHINGTON STATE ROLL-UP

### Clients or persons with dependents with HCA medical coverage, by type of coverage

Associated HCA medical clients and estimated medical and mental health expenditures

PREPARED BY: DSHS Research and Data Analysis Division, October 2012

#### Employed HCA medical clients and their HCA-covered dependents

	January 2011	June 2011
<b>Number of Employed Clients</b>	<b>90,468</b>	<b>89,541</b>
Number Employed 0-91 Days with Firm	9,971	10,942
Number Employed 92-365 Days with Firm	33,181	29,744
Number Employed 366+ Days with Firm	47,316	48,855
<b>Associated HCA Medical Clients</b>	<b>163,460</b>	<b>160,929</b>
Family Medical	104,225	105,311
Children's Medical and SCHIP	36,137	33,293
Pregnant Women	10,950	10,472
Persons with Disabilities	10,970	10,636
Other Coverage	1,178	1,217
<b>Monthly Medical and MH Expenditures - All Funds</b>	<b>\$52,230,322</b>	<b>\$51,272,172</b>
General Fund-Federal	\$26,532,751	\$26,041,133
General Fund-State and Other Sources	\$25,697,571	\$25,231,040

#### Non-client persons with HCA-covered dependents

	January 2011	June 2011
<b>Number of Employed Persons</b>	<b>202,044</b>	<b>208,954</b>
Number Employed 0-91 Days with Firm	5,107	6,959
Number Employed 92-365 Days with Firm	41,125	36,837
Number Employed 366+ Days with Firm	155,812	165,158
<b>Associated HCA Medical Clients</b>	<b>360,477</b>	<b>371,557</b>
Family Medical	19,787	23,365
Children's Medical and SCHIP	327,823	334,855
Pregnant Women	8,968	9,000
Persons with Disabilities	3,644	4,037
Other Coverage	255	300
<b>Monthly Medical and MH Expenditures - All Funds</b>	<b>\$66,675,973</b>	<b>\$68,820,509</b>
General Fund-Federal	\$35,252,695	\$36,431,671
General Fund-State and Other Sources	\$31,423,278	\$32,388,838

#### TOTAL

	January 2011	June 2011
<b>Number of Employed Clients/Persons</b>	<b>292,512</b>	<b>298,495</b>
Number Employed 0-91 Days with Firm	15,078	17,901
Number Employed 92-365 Days with Firm	74,306	66,581
Number Employed 366+ Days with Firm	203,128	214,013
<b>Associated HCA Medical Clients</b>	<b>523,937</b>	<b>532,486</b>
Family Medical	124,012	128,676
Children's Medical and SCHIP	363,960	368,148
Pregnant Women	19,918	19,472
Persons with Disabilities	14,614	14,673
Other Coverage	1,433	1,517
<b>Monthly Medical and MH Expenditures - All Funds</b>	<b>\$118,906,295</b>	<b>\$120,092,681</b>
General Fund-Federal	\$61,785,446	\$62,472,804
General Fund-State and Other Sources	\$57,120,849	\$57,619,878

DATA SOURCES: This report is based on the analysis of Automated Client Eligibility System (ACES) employer name data linked to ProviderOne eligibility data. ACES employer name information does not permit the identification of separately owned franchises operating under the same business name. The employer name information used in this report is self-reported; it is not a required element of the application for public assistance and is not independently verified by DSHS.

# 1. WAL-MART STORES INC

## Clients or persons with dependents with HCA medical coverage, by type of coverage

Associated HCA medical clients and estimated medical and mental health expenditures

PREPARED BY: DSHS Research and Data Analysis Division, October 2012

### Employed HCA medical clients and their HCA-covered dependents

	January 2011	June 2011
<b>Number of Employed Clients</b>	<b>1,210</b>	<b>1,186</b>
Number Employed 0-91 Days with Firm	166	163
Number Employed 92-365 Days with Firm	404	384
Number Employed 366+ Days with Firm	640	639
<b>Associated HCA Medical Clients</b>	<b>2,500</b>	<b>2,382</b>
Family Medical	1,563	1,565
Children's Medical and SCHIP	592	481
Pregnant Women	190	186
Persons with Disabilities	149	144
Other Coverage	6	6
<b>Monthly Medical and MH Expenditures - All Funds</b>	<b>\$799,788</b>	<b>\$773,462</b>
General Fund-Federal	\$407,624	\$393,634
General Fund-State and Other Sources	\$392,164	\$379,829

### Non-client persons with HCA-covered dependents

	January 2011	June 2011
<b>Number of Employed Persons</b>	<b>2,314</b>	<b>2,308</b>
Number Employed 0-91 Days with Firm	59	50
Number Employed 92-365 Days with Firm	294	315
Number Employed 366+ Days with Firm	1,961	1,943
<b>Associated HCA Medical Clients</b>	<b>3,977</b>	<b>3,929</b>
Family Medical	170	171
Children's Medical and SCHIP	3,623	3,591
Pregnant Women	90	85
Persons with Disabilities	88	76
Other Coverage	6	6
<b>Monthly Medical and MH Expenditures - All Funds</b>	<b>\$775,685</b>	<b>\$754,962</b>
General Fund-Federal	\$416,072	\$405,928
General Fund-State and Other Sources	\$359,614	\$349,035

### TOTAL

	January 2011	June 2011
<b>Number of Employed Clients/Persons</b>	<b>3,524</b>	<b>3,494</b>
Number Employed 0-91 Days with Firm	225	213
Number Employed 92-365 Days with Firm	698	699
Number Employed 366+ Days with Firm	2,601	2,582
<b>Associated HCA Medical Clients</b>	<b>6,477</b>	<b>6,311</b>
Family Medical	1,733	1,736
Children's Medical and SCHIP	4,215	4,072
Pregnant Women	280	271
Persons with Disabilities	237	220
Other Coverage	12	12
<b>Monthly Medical and MH Expenditures - All Funds</b>	<b>\$1,575,473</b>	<b>\$1,528,425</b>
General Fund-Federal	\$823,696	\$799,561
General Fund-State and Other Sources	\$751,778	\$728,863

DATA SOURCES: This report is based on the analysis of Automated Client Eligibility System (ACES) employer name data linked to ProviderOne eligibility data. ACES employer name information does not permit the identification of separately owned franchises operating under the same business name. The employer name information used in this report is self-reported; it is not a required element of the application for public assistance and is not independently verified by DSHS.

## 2. MCDONALDS CORPORATION

### Clients or persons with dependents with HCA medical coverage, by type of coverage

Associated HCA medical clients and estimated medical and mental health expenditures

PREPARED BY: DSHS Research and Data Analysis Division, October 2012

#### Employed HCA medical clients and their HCA-covered dependents

	January 2011	June 2011
<b>Number of Employed Clients</b>	<b>1,407</b>	<b>1,367</b>
Number Employed 0-91 Days with Firm	94	144
Number Employed 92-365 Days with Firm	505	418
Number Employed 366+ Days with Firm	808	805
<b>Associated HCA Medical Clients</b>	<b>1,774</b>	<b>1,692</b>
Family Medical	966	966
Children's Medical and SCHIP	483	429
Pregnant Women	208	185
Persons with Disabilities	108	102
Other Coverage	9	10
<b>Monthly Medical and MH Expenditures - All Funds</b>	<b>\$606,849</b>	<b>\$567,952</b>
General Fund-Federal	\$306,440	\$287,324
General Fund-State and Other Sources	\$300,409	\$280,628

#### Non-client persons with HCA-covered dependents

	January 2011	June 2011
<b>Number of Employed Persons</b>	<b>1,324</b>	<b>1,408</b>
Number Employed 0-91 Days with Firm	24	33
Number Employed 92-365 Days with Firm	233	203
Number Employed 366+ Days with Firm	1,067	1,172
<b>Associated HCA Medical Clients</b>	<b>1,920</b>	<b>2,046</b>
Family Medical	205	233
Children's Medical and SCHIP	1,675	1,765
Pregnant Women	25	28
Persons with Disabilities	14	18
Other Coverage	1	2
<b>Monthly Medical and MH Expenditures - All Funds</b>	<b>\$326,589</b>	<b>\$353,847</b>
General Fund-Federal	\$162,712	\$178,086
General Fund-State and Other Sources	\$163,877	\$175,760

#### TOTAL

	January 2011	June 2011
<b>Number of Employed Clients/Persons</b>	<b>2,731</b>	<b>2,775</b>
Number Employed 0-91 Days with Firm	118	177
Number Employed 92-365 Days with Firm	738	621
Number Employed 366+ Days with Firm	1,875	1,977
<b>Associated HCA Medical Clients</b>	<b>3,694</b>	<b>3,738</b>
Family Medical	1,171	1,199
Children's Medical and SCHIP	2,158	2,194
Pregnant Women	233	213
Persons with Disabilities	122	120
Other Coverage	10	12
<b>Monthly Medical and MH Expenditures - All Funds</b>	<b>\$933,438</b>	<b>\$921,799</b>
General Fund-Federal	\$469,152	\$465,410
General Fund-State and Other Sources	\$464,286	\$456,389

DATA SOURCES: This report is based on the analysis of Automated Client Eligibility System (ACES) employer name data linked to ProviderOne eligibility data. ACES employer name information does not permit the identification of separately owned franchises operating under the same business name. The employer name information used in this report is self-reported; it is not a required element of the application for public assistance and is not independently verified by DSHS.



### 3. SAFEWAY

#### Clients or persons with dependents with HCA medical coverage, by type of coverage

Associated HCA medical clients and estimated medical and mental health expenditures

PREPARED BY: DSHS Research and Data Analysis Division, October 2012

#### Employed HCA medical clients and their HCA-covered dependents

	January 2011	June 2011
<b>Number of Employed Clients</b>	<b>934</b>	<b>904</b>
Number Employed 0-91 Days with Firm	69	88
Number Employed 92-365 Days with Firm	267	216
Number Employed 366+ Days with Firm	598	600
<b>Associated HCA Medical Clients</b>	<b>1,205</b>	<b>1,167</b>
Family Medical	632	620
Children's Medical and SCHIP	257	224
Pregnant Women	91	97
Persons with Disabilities	221	220
Other Coverage	4	6
<b>Monthly Medical and MH Expenditures - All Funds</b>	<b>\$449,989</b>	<b>\$443,753</b>
General Fund-Federal	\$227,547	\$223,989
General Fund-State and Other Sources	\$222,442	\$219,764

#### Non-client persons with HCA-covered dependents

	January 2011	June 2011
<b>Number of Employed Persons</b>	<b>964</b>	<b>951</b>
Number Employed 0-91 Days with Firm	19	23
Number Employed 92-365 Days with Firm	135	122
Number Employed 366+ Days with Firm	810	806
<b>Associated HCA Medical Clients</b>	<b>1,578</b>	<b>1,546</b>
Family Medical	82	96
Children's Medical and SCHIP	1,440	1,399
Pregnant Women	32	32
Persons with Disabilities	22	17
Other Coverage	2	2
<b>Monthly Medical and MH Expenditures - All Funds</b>	<b>\$300,363</b>	<b>\$289,950</b>
General Fund-Federal	\$160,872	\$155,578
General Fund-State and Other Sources	\$139,491	\$134,372

#### TOTAL

	January 2011	June 2011
<b>Number of Employed Clients/Persons</b>	<b>1,898</b>	<b>1,855</b>
Number Employed 0-91 Days with Firm	88	111
Number Employed 92-365 Days with Firm	402	338
Number Employed 366+ Days with Firm	1,408	1,406
<b>Associated HCA Medical Clients</b>	<b>2,783</b>	<b>2,713</b>
Family Medical	714	716
Children's Medical and SCHIP	1,697	1,623
Pregnant Women	123	129
Persons with Disabilities	243	237
Other Coverage	6	8
<b>Monthly Medical and MH Expenditures - All Funds</b>	<b>\$750,351</b>	<b>\$733,703</b>
General Fund-Federal	\$388,419	\$379,567
General Fund-State and Other Sources	\$361,932	\$354,136

DATA SOURCES: This report is based on the analysis of Automated Client Eligibility System (ACES) employer name data linked to ProviderOne eligibility data. ACES employer name information does not permit the identification of separately owned franchises operating under the same business name. The employer name information used in this report is self-reported; it is not a required element of the application for public assistance and is not independently verified by DSHS.

#### 4. THE KROGER CO

##### Clients or persons with dependents with HCA medical coverage, by type of coverage

Associated HCA medical clients and estimated medical and mental health expenditures

PREPARED BY: DSHS Research and Data Analysis Division, October 2012

##### Employed HCA medical clients and their HCA-covered dependents

	January 2011	June 2011
<b>Number of Employed Clients</b>	<b>616</b>	<b>583</b>
Number Employed 0-91 Days with Firm	46	42
Number Employed 92-365 Days with Firm	194	175
Number Employed 366+ Days with Firm	376	366
<b>Associated HCA Medical Clients</b>	<b>782</b>	<b>721</b>
Family Medical	410	383
Children's Medical and SCHIP	191	165
Pregnant Women	92	87
Persons with Disabilities	85	84
Other Coverage	4	2
<b>Monthly Medical and MH Expenditures - All Funds</b>	<b>\$288,308</b>	<b>\$269,765</b>
General Fund-Federal	\$146,159	\$136,695
General Fund-State and Other Sources	\$142,149	\$133,070

##### Non-client persons with HCA-covered dependents

	January 2011	June 2011
<b>Number of Employed Persons</b>	<b>831</b>	<b>875</b>
Number Employed 0-91 Days with Firm	22	15
Number Employed 92-365 Days with Firm	120	132
Number Employed 366+ Days with Firm	689	728
<b>Associated HCA Medical Clients</b>	<b>1,422</b>	<b>1,495</b>
Family Medical	66	75
Children's Medical and SCHIP	1,302	1,352
Pregnant Women	28	40
Persons with Disabilities	26	28
Other Coverage	0	0
<b>Monthly Medical and MH Expenditures - All Funds</b>	<b>\$271,322</b>	<b>\$295,070</b>
General Fund-Federal	\$145,241	\$157,863
General Fund-State and Other Sources	\$126,081	\$137,206

##### TOTAL

	January 2011	June 2011
<b>Number of Employed Clients/Persons</b>	<b>1,447</b>	<b>1,458</b>
Number Employed 0-91 Days with Firm	68	57
Number Employed 92-365 Days with Firm	314	307
Number Employed 366+ Days with Firm	1,065	1,094
<b>Associated HCA Medical Clients</b>	<b>2,204</b>	<b>2,216</b>
Family Medical	476	458
Children's Medical and SCHIP	1,493	1,517
Pregnant Women	120	127
Persons with Disabilities	111	112
Other Coverage	4	2
<b>Monthly Medical and MH Expenditures - All Funds</b>	<b>\$559,630</b>	<b>\$564,835</b>
General Fund-Federal	\$291,399	\$294,558
General Fund-State and Other Sources	\$268,231	\$270,277

DATA SOURCES: This report is based on the analysis of Automated Client Eligibility System (ACES) employer name data linked to ProviderOne eligibility data. ACES employer name information does not permit the identification of separately owned franchises operating under the same business name. The employer name information used in this report is self-reported; it is not a required element of the application for public assistance and is not independently verified by DSHS.

## 5. YUM! BRANDS INC

### Clients or persons with dependents with HCA medical coverage, by type of coverage

Associated HCA medical clients and estimated medical and mental health expenditures

PREPARED BY: DSHS Research and Data Analysis Division, October 2012

#### Employed HCA medical clients and their HCA-covered dependents

	January 2011	June 2011
<b>Number of Employed Clients</b>	<b>672</b>	<b>645</b>
Number Employed 0-91 Days with Firm	54	58
Number Employed 92-365 Days with Firm	266	232
Number Employed 366+ Days with Firm	352	355
<b>Associated HCA Medical Clients</b>	<b>895</b>	<b>921</b>
Family Medical	565	599
Children's Medical and SCHIP	194	192
Pregnant Women	76	75
Persons with Disabilities	59	53
Other Coverage	1	2
<b>Monthly Medical and MH Expenditures - All Funds</b>	<b>\$299,668</b>	<b>\$302,230</b>
General Fund-Federal	\$152,172	\$153,523
General Fund-State and Other Sources	\$147,496	\$148,707

#### Non-client persons with HCA-covered dependents

	January 2011	June 2011
<b>Number of Employed Persons</b>	<b>558</b>	<b>542</b>
Number Employed 0-91 Days with Firm	14	19
Number Employed 92-365 Days with Firm	115	83
Number Employed 366+ Days with Firm	429	440
<b>Associated HCA Medical Clients</b>	<b>791</b>	<b>782</b>
Family Medical	92	91
Children's Medical and SCHIP	678	667
Pregnant Women	14	16
Persons with Disabilities	4	7
Other Coverage	3	1
<b>Monthly Medical and MH Expenditures - All Funds</b>	<b>\$142,829</b>	<b>\$143,417</b>
General Fund-Federal	\$73,655	\$74,714
General Fund-State and Other Sources	\$69,175	\$68,703

#### TOTAL

	January 2011	June 2011
<b>Number of Employed Clients/Persons</b>	<b>1,230</b>	<b>1,187</b>
Number Employed 0-91 Days with Firm	68	77
Number Employed 92-365 Days with Firm	381	315
Number Employed 366+ Days with Firm	781	795
<b>Associated HCA Medical Clients</b>	<b>1,686</b>	<b>1,703</b>
Family Medical	657	690
Children's Medical and SCHIP	872	859
Pregnant Women	90	91
Persons with Disabilities	63	60
Other Coverage	4	3
<b>Monthly Medical and MH Expenditures - All Funds</b>	<b>\$442,498</b>	<b>\$445,647</b>
General Fund-Federal	\$225,827	\$228,237
General Fund-State and Other Sources	\$216,671	\$217,409

DATA SOURCES: This report is based on the analysis of Automated Client Eligibility System (ACES) employer name data linked to ProviderOne eligibility data. ACES employer name information does not permit the identification of separately owned franchises operating under the same business name. The employer name information used in this report is self-reported; it is not a required element of the application for public assistance and is not independently verified by DSHS.

## 6. JACK IN THE BOX

### Clients or persons with dependents with HCA medical coverage, by type of coverage

Associated HCA medical clients and estimated medical and mental health expenditures

PREPARED BY: DSHS Research and Data Analysis Division, October 2012

#### Employed HCA medical clients and their HCA-covered dependents

	January 2011	June 2011
<b>Number of Employed Clients</b>	<b>435</b>	<b>426</b>
Number Employed 0-91 Days with Firm	52	54
Number Employed 92-365 Days with Firm	173	158
Number Employed 366+ Days with Firm	210	214
<b>Associated HCA Medical Clients</b>	<b>698</b>	<b>667</b>
Family Medical	358	386
Children's Medical and SCHIP	235	183
Pregnant Women	73	71
Persons with Disabilities	32	27
Other Coverage	0	0
<b>Monthly Medical and MH Expenditures - All Funds</b>	<b>\$221,872</b>	<b>\$216,460</b>
General Fund-Federal	\$112,537	\$109,990
General Fund-State and Other Sources	\$109,335	\$106,470

#### Non-client persons with HCA-covered dependents

	January 2011	June 2011
<b>Number of Employed Persons</b>	<b>558</b>	<b>559</b>
Number Employed 0-91 Days with Firm	14	20
Number Employed 92-365 Days with Firm	83	88
Number Employed 366+ Days with Firm	461	451
<b>Associated HCA Medical Clients</b>	<b>838</b>	<b>824</b>
Family Medical	86	87
Children's Medical and SCHIP	738	723
Pregnant Women	10	7
Persons with Disabilities	4	7
Other Coverage	0	0
<b>Monthly Medical and MH Expenditures - All Funds</b>	<b>\$141,769</b>	<b>\$139,713</b>
General Fund-Federal	\$70,809	\$70,417
General Fund-State and Other Sources	\$70,961	\$69,296

#### TOTAL

	January 2011	June 2011
<b>Number of Employed Clients/Persons</b>	<b>993</b>	<b>985</b>
Number Employed 0-91 Days with Firm	66	74
Number Employed 92-365 Days with Firm	256	246
Number Employed 366+ Days with Firm	671	665
<b>Associated HCA Medical Clients</b>	<b>1,536</b>	<b>1,491</b>
Family Medical	444	473
Children's Medical and SCHIP	973	906
Pregnant Women	83	78
Persons with Disabilities	36	34
Other Coverage	0	0
<b>Monthly Medical and MH Expenditures - All Funds</b>	<b>\$363,641</b>	<b>\$356,173</b>
General Fund-Federal	\$183,346	\$180,406
General Fund-State and Other Sources	\$180,295	\$175,766

DATA SOURCES: This report is based on the analysis of Automated Client Eligibility System (ACES) employer name data linked to ProviderOne eligibility data. ACES employer name information does not permit the identification of separately owned franchises operating under the same business name. The employer name information used in this report is self-reported; it is not a required element of the application for public assistance and is not independently verified by DSHS.

## 7. ZIRKLE FRUIT COMPANY

### Clients or persons with dependents with HCA medical coverage, by type of coverage

Associated HCA medical clients and estimated medical and mental health expenditures

PREPARED BY: DSHS Research and Data Analysis Division, October 2012

#### Employed HCA medical clients and their HCA-covered dependents

	January 2011	June 2011
<b>Number of Employed Clients</b>	<b>75</b>	<b>74</b>
Number Employed 0-91 Days with Firm	6	13
Number Employed 92-365 Days with Firm	35	27
Number Employed 366+ Days with Firm	34	34
<b>Associated HCA Medical Clients</b>	<b>152</b>	<b>153</b>
Family Medical	68	78
Children's Medical and SCHIP	73	63
Pregnant Women	8	9
Persons with Disabilities	0	1
Other Coverage	3	2
<b>Monthly Medical and MH Expenditures - All Funds</b>	<b>\$35,803</b>	<b>\$38,515</b>
General Fund-Federal	\$18,067	\$19,665
General Fund-State and Other Sources	\$17,736	\$18,851

#### Non-client persons with HCA-covered dependents

	January 2011	June 2011
<b>Number of Employed Persons</b>	<b>795</b>	<b>851</b>
Number Employed 0-91 Days with Firm	26	72
Number Employed 92-365 Days with Firm	202	149
Number Employed 366+ Days with Firm	567	630
<b>Associated HCA Medical Clients</b>	<b>1,616</b>	<b>1,738</b>
Family Medical	105	214
Children's Medical and SCHIP	1,446	1,445
Pregnant Women	49	58
Persons with Disabilities	16	21
Other Coverage	0	0
<b>Monthly Medical and MH Expenditures - All Funds</b>	<b>\$296,224</b>	<b>\$326,342</b>
General Fund-Federal	\$149,831	\$164,125
General Fund-State and Other Sources	\$146,393	\$162,217

#### TOTAL

	January 2011	June 2011
<b>Number of Employed Clients/Persons</b>	<b>870</b>	<b>925</b>
Number Employed 0-91 Days with Firm	32	85
Number Employed 92-365 Days with Firm	237	176
Number Employed 366+ Days with Firm	601	664
<b>Associated HCA Medical Clients</b>	<b>1,768</b>	<b>1,891</b>
Family Medical	173	292
Children's Medical and SCHIP	1,519	1,508
Pregnant Women	57	67
Persons with Disabilities	16	22
Other Coverage	3	2
<b>Monthly Medical and MH Expenditures - All Funds</b>	<b>\$332,027</b>	<b>\$364,858</b>
General Fund-Federal	\$167,898	\$183,790
General Fund-State and Other Sources	\$164,129	\$181,068

DATA SOURCES: This report is based on the analysis of Automated Client Eligibility System (ACES) employer name data linked to ProviderOne eligibility data. ACES employer name information does not permit the identification of separately owned franchises operating under the same business name. The employer name information used in this report is self-reported; it is not a required element of the application for public assistance and is not independently verified by DSHS.

## 8. STEMILT GROWERS INC

### Clients or persons with dependents with HCA medical coverage, by type of coverage

Associated HCA medical clients and estimated medical and mental health expenditures

PREPARED BY: DSHS Research and Data Analysis Division, October 2012

#### Employed HCA medical clients and their HCA-covered dependents

	January 2011	June 2011
<b>Number of Employed Clients</b>	<b>108</b>	<b>100</b>
Number Employed 0-91 Days with Firm	4	15
Number Employed 92-365 Days with Firm	44	27
Number Employed 366+ Days with Firm	60	58
<b>Associated HCA Medical Clients</b>	<b>165</b>	<b>166</b>
Family Medical	61	82
Children's Medical and SCHIP	74	61
Pregnant Women	27	17
Persons with Disabilities	2	3
Other Coverage	1	3
<b>Monthly Medical and MH Expenditures - All Funds</b>	<b>\$51,133</b>	<b>\$47,811</b>
General Fund-Federal	\$25,546	\$24,055
General Fund-State and Other Sources	\$25,587	\$23,756

#### Non-client persons with HCA-covered dependents

	January 2011	June 2011
<b>Number of Employed Persons</b>	<b>658</b>	<b>712</b>
Number Employed 0-91 Days with Firm	6	40
Number Employed 92-365 Days with Firm	189	151
Number Employed 366+ Days with Firm	463	521
<b>Associated HCA Medical Clients</b>	<b>1,139</b>	<b>1,263</b>
Family Medical	90	119
Children's Medical and SCHIP	1,010	1,102
Pregnant Women	29	33
Persons with Disabilities	9	8
Other Coverage	1	1
<b>Monthly Medical and MH Expenditures - All Funds</b>	<b>\$202,270</b>	<b>\$224,678</b>
General Fund-Federal	\$101,660	\$112,802
General Fund-State and Other Sources	\$100,610	\$111,876

#### TOTAL

	January 2011	June 2011
<b>Number of Employed Clients/Persons</b>	<b>766</b>	<b>812</b>
Number Employed 0-91 Days with Firm	10	55
Number Employed 92-365 Days with Firm	233	178
Number Employed 366+ Days with Firm	523	579
<b>Associated HCA Medical Clients</b>	<b>1,304</b>	<b>1,429</b>
Family Medical	151	201
Children's Medical and SCHIP	1,084	1,163
Pregnant Women	56	50
Persons with Disabilities	11	11
Other Coverage	2	4
<b>Monthly Medical and MH Expenditures - All Funds</b>	<b>\$253,403</b>	<b>\$272,489</b>
General Fund-Federal	\$127,206	\$136,857
General Fund-State and Other Sources	\$126,198	\$135,632

DATA SOURCES: This report is based on the analysis of Automated Client Eligibility System (ACES) employer name data linked to ProviderOne eligibility data. ACES employer name information does not permit the identification of separately owned franchises operating under the same business name. The employer name information used in this report is self-reported; it is not a required element of the application for public assistance and is not independently verified by DSHS.

## 9. TARGET CORPORATION

### Clients or persons with dependents with HCA medical coverage, by type of coverage

Associated HCA medical clients and estimated medical and mental health expenditures

PREPARED BY: DSHS Research and Data Analysis Division, October 2012

#### Employed HCA medical clients and their HCA-covered dependents

	January 2011	June 2011
<b>Number of Employed Clients</b>	<b>402</b>	<b>372</b>
Number Employed 0-91 Days with Firm	85	47
Number Employed 92-365 Days with Firm	89	115
Number Employed 366+ Days with Firm	228	210
<b>Associated HCA Medical Clients</b>	<b>666</b>	<b>543</b>
Family Medical	433	363
Children's Medical and SCHIP	132	82
Pregnant Women	58	61
Persons with Disabilities	40	34
Other Coverage	3	3
<b>Monthly Medical and MH Expenditures - All Funds</b>	<b>\$224,467</b>	<b>\$194,866</b>
General Fund-Federal	\$113,886	\$98,729
General Fund-State and Other Sources	\$110,581	\$96,137

#### Non-client persons with HCA-covered dependents

	January 2011	June 2011
<b>Number of Employed Persons</b>	<b>382</b>	<b>400</b>
Number Employed 0-91 Days with Firm	23	8
Number Employed 92-365 Days with Firm	43	70
Number Employed 366+ Days with Firm	316	322
<b>Associated HCA Medical Clients</b>	<b>559</b>	<b>603</b>
Family Medical	27	28
Children's Medical and SCHIP	514	553
Pregnant Women	13	18
Persons with Disabilities	5	4
Other Coverage	0	0
<b>Monthly Medical and MH Expenditures - All Funds</b>	<b>\$106,647</b>	<b>\$115,218</b>
General Fund-Federal	\$57,039	\$61,719
General Fund-State and Other Sources	\$49,608	\$53,499

#### TOTAL

	January 2011	June 2011
<b>Number of Employed Clients/Persons</b>	<b>784</b>	<b>772</b>
Number Employed 0-91 Days with Firm	108	55
Number Employed 92-365 Days with Firm	132	185
Number Employed 366+ Days with Firm	544	532
<b>Associated HCA Medical Clients</b>	<b>1,225</b>	<b>1,146</b>
Family Medical	460	391
Children's Medical and SCHIP	646	635
Pregnant Women	71	79
Persons with Disabilities	45	38
Other Coverage	3	3
<b>Monthly Medical and MH Expenditures - All Funds</b>	<b>\$331,114</b>	<b>\$310,084</b>
General Fund-Federal	\$170,925	\$160,448
General Fund-State and Other Sources	\$160,189	\$149,636

DATA SOURCES: This report is based on the analysis of Automated Client Eligibility System (ACES) employer name data linked to ProviderOne eligibility data. ACES employer name information does not permit the identification of separately owned franchises operating under the same business name. The employer name information used in this report is self-reported; it is not a required element of the application for public assistance and is not independently verified by DSHS.

## 10. SEARS HOLDINGS CORPORATION

### Clients or persons with dependents with HCA medical coverage, by type of coverage

Associated HCA medical clients and estimated medical and mental health expenditures

PREPARED BY: DSHS Research and Data Analysis Division, October 2012

#### Employed HCA medical clients and their HCA-covered dependents

	January 2011	June 2011
<b>Number of Employed Clients</b>	<b>449</b>	<b>388</b>
Number Employed 0-91 Days with Firm	76	41
Number Employed 92-365 Days with Firm	145	134
Number Employed 366+ Days with Firm	228	213
<b>Associated HCA Medical Clients</b>	<b>734</b>	<b>642</b>
Family Medical	514	449
Children's Medical and SCHIP	136	128
Pregnant Women	51	35
Persons with Disabilities	30	28
Other Coverage	3	2
<b>Monthly Medical and MH Expenditures - All Funds</b>	<b>\$231,636</b>	<b>\$194,774</b>
General Fund-Federal	\$117,863	\$99,335
General Fund-State and Other Sources	\$113,773	\$95,439

#### Non-client persons with HCA-covered dependents

	January 2011	June 2011
<b>Number of Employed Persons</b>	<b>348</b>	<b>367</b>
Number Employed 0-91 Days with Firm	27	12
Number Employed 92-365 Days with Firm	55	76
Number Employed 366+ Days with Firm	266	279
<b>Associated HCA Medical Clients</b>	<b>478</b>	<b>502</b>
Family Medical	32	38
Children's Medical and SCHIP	434	446
Pregnant Women	8	15
Persons with Disabilities	4	3
Other Coverage	0	0
<b>Monthly Medical and MH Expenditures - All Funds</b>	<b>\$86,846</b>	<b>\$95,278</b>
General Fund-Federal	\$46,630	\$51,169
General Fund-State and Other Sources	\$40,217	\$44,108

#### TOTAL

	January 2011	June 2011
<b>Number of Employed Clients/Persons</b>	<b>797</b>	<b>755</b>
Number Employed 0-91 Days with Firm	103	53
Number Employed 92-365 Days with Firm	200	210
Number Employed 366+ Days with Firm	494	492
<b>Associated HCA Medical Clients</b>	<b>1,212</b>	<b>1,144</b>
Family Medical	546	487
Children's Medical and SCHIP	570	574
Pregnant Women	59	50
Persons with Disabilities	34	31
Other Coverage	3	2
<b>Monthly Medical and MH Expenditures - All Funds</b>	<b>\$318,482</b>	<b>\$290,052</b>
General Fund-Federal	\$164,493	\$150,504
General Fund-State and Other Sources	\$153,990	\$139,548

DATA SOURCES: This report is based on the analysis of Automated Client Eligibility System (ACES) employer name data linked to ProviderOne eligibility data. ACES employer name information does not permit the identification of separately owned franchises operating under the same business name. The employer name information used in this report is self-reported; it is not a required element of the application for public assistance and is not independently verified by DSHS.





Additional copies of this report may be obtained from: [www.dshs.wa.gov/rda](http://www.dshs.wa.gov/rda).

PREPARED BY  
Department of Social and Health Services Research and Data Analysis Division  
Report Number 9.103A