



Report to the Legislature

**Employment Status of Medical Assistance Clients
and Persons with Dependents with DSHS
Medical Coverage**

**Statewide Data for CY 2008
By Firm Detail for January 2009 and June 2009**

As Required by Engrossed Substitute House Bill 3079

ABRIDGED VERSION

With Detail for Top 10 Firms

January 15, 2010

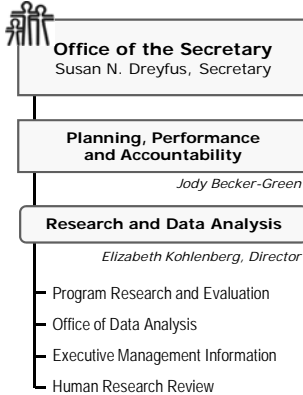
Department of Social and Health Services
Planning, Performance and Accountability
Research and Data Analysis Division
PO Box 45204
Olympia, WA 98504-5204
(360) 902-0701
Fax: (360) 902-0705

DSHS

WASHINGTON STATE

Department of Social and Health Services

Headquarters located at:
14th and Jefferson Street
Olympia, WA 98504



RDA

DSHS Research and Data Analysis Division (RDA)

Director: Elizabeth Kohlenberg, PhD
e-mail: kohleer@dshs.wa.gov
14th and Jefferson Street
PO Box 45204
Olympia, WA 98504-5204
360.902.0701

Report to the Legislature

Employment Status of Medical Assistance Clients and Persons with Dependents with DSHS Medical Coverage | **ABRIDGED**

Statewide Data for 2008 By Firm Detail for 1/09 and 6/09

As Required by Engrossed Substitute
House Bill 3079

January 15, 2010

Report prepared by

DSHS Research and Data Analysis Division
(RDA)

David Mancuso, PhD
Lijian He, PhD
Barbara E.M. Felver, MES, MPA

with

DSHS Health and Recovery Services
Administration

and

Washington State
Employment Security Department

RDA report number 9.97A

360.902.0701

RDA's Online Library:
www.dshs.wa.gov/rda

Employment Status of Medical Assistance Clients and Persons with Dependents with DSHS Medical Coverage

Statewide Data for CY 2008

By Firm Detail for January 2009 and June 2009

As Required by Engrossed Substitute House Bill 3079

ABRIDGED VERSION

With Detail for Top 10 Firms

Contents	1
Introduction	3
Data Sources and Limitations	4
Key Findings.....	5
Trends in Employment	6
DSHS Medical Program's Employed Clients and Non-Client Persons with Dependents with DSHS Medical Coverage	6
Aggregate Tables	7
<i>Employment Status of Medical Assistance Clients and Persons with Dependents with DSHS Medical Coverage: Calendar Year 2008</i>	
Table 1A. Total Employed DSHS Medical Assistance Clients and Non-Client Persons with Dependents with DSHS Medical Coverage: <i>Yearly Average per Quarter</i>	8
Table 1B. Total Employed DSHS Medical Assistance Clients and Non-Client Persons with Dependents with DSHS Medical Coverage: <i>Annual Profile</i>	9
Table 2A. Employed DSHS Medical Assistance Clients: <i>Yearly Average per Quarter</i>	10
Table 2B. Employed DSHS Medical Assistance Clients: <i>Annual Profile</i>	11
Table 3A. Employed Non-Client Persons with Dependents with DSHS Medical Coverage: <i>Yearly Average per Quarter</i>	12
Table 3B. Employed Non-Client Persons with Dependents with DSHS Medical Coverage: <i>Annual Profile</i>	13
By-Firm Tables.....	15
<i>Employment of Medical Assistance Clients and Persons with Dependents with DSHS Medical Coverage by Firm: January and June 2009</i>	
Table 4. Rank of Firms by Number of DSHS Medical Clients, High to Low	17
Aggregate Table. Washington State Roll-up	30
ABRIDGED Supplemental Tables. Following Rank Order Presented in Table 4	For Top 10 Firms

Employment Status of Medical Assistance Clients and Persons with Dependents with DSHS Medical Coverage

Statewide Data for CY 2008

By Firm Detail for January 2009 and June 2009

As Required by Engrossed Substitute House Bill 3079

January 15, 2010

INTRODUCTION

Nationally, an increasing number of employers faced with rising employee health care premium costs either have chosen to drop health care benefits for their employees or to pass on to their employees a greater share of coverage costs. As a consequence, more employees and their dependents either go without health insurance, apply for state purchased health care programs supported with public funds, or seek uncompensated care at hospitals and community clinics.

In response to these trends, the 2006 State Legislature enacted Engrossed Substitute House Bill (ESHB) 3079. This legislation directed the Department of Social and Health Services (DSHS) and the Health Care Authority (HCA) in coordination with the Employment Security Department (ESD) to report annually on the employment status of Medical Assistance clients and Basic Health Program (BHP) enrollees. This report provides both aggregate and employer-specific data related to DSHS Medical Assistance clients and non-client parents with dependents with DSHS medical coverage, as specified in the legislation (enacted as Chapter 264, Laws of 2006 and codified in RCW 70.47.170).

Governor Gregoire signed ESHB 3079, but vetoed the emergency clause included in the bill. The Governor's veto message urged caution when interpreting information provided in this report:

The employer information to be provided by the Health Care Authority (HCA) and the Department of Social and Health Services (DSHS) is not a requirement for enrollment or eligibility. Consequently, data contained in the reports will have been provided on a voluntary basis, and will be unverified. The two reports—an employer specific report and an aggregated report—will originate from separate sources. Therefore, they will not be comparable. The reports will also be based on a point-in-time data collection and will therefore not reflect changes in employment status. These data limitations must be considered when interpreting the reports.

The Governor also noted the programs provide health care services to eligible working persons and expressed concern that the information "not be misconstrued to portray beneficiaries of our Basic Health and Medicaid programs in a negative light."

ESHB 3079 directs DSHS to provide two separate sets of information related to DSHS Medical Assistance clients and non-client parents with dependents with DSHS medical coverage:

- Aggregate data for calendar year (CY) 2008 by industry, firm size, and public/private ownership type. These data are based on ESD quarterly wage data.
- By-firm data for January and June 2009 for employers associated with 50 or more persons with DSHS medical coverage. These data are based on DSHS Automated Client Eligibility System (ACES) employer name data.

DATA SOURCES AND LIMITATIONS

Aggregate data by industry, firm size, and public/private ownership type are based on ESD quarterly earnings data and monthly DSHS medical eligibility data for CY 2008. ESD earnings data do not include self-employment, federal government employment, or unreported earnings.

By-firm data are based on ACES employer name data linked to DSHS medical eligibility data for January and June 2008. ACES employer name information does not permit the identification of separately owned franchises operating under the same business name. The employer name information used in this report is self-reported; it is not a required element of the application for public assistance and is not independently verified by DSHS. Employer rankings are based on the average monthly number of employed persons associated with DSHS medical clients in January and June 2009.

The tables report the number of DSHS clients or persons with dependents with DSHS medical coverage who were employed, and the associated “member months” by type of coverage. Coverage type was determined based on Medicaid Management Information System (MMIS) program, match and medical codes.

The Family Medical coverage group includes persons receiving TANF and related medical coverage. The Children’s Medical and SCHIP programs provide medical coverage to children in families that do not meet TANF eligibility criteria but have household income below 200 percent (Children’s Medical) or 250 percent (SCHIP) of the Federal Poverty Guidelines. This coverage group also includes a small number of children enrolled in Foster Care or Adoptions Support coverage. The Pregnant Women program provides Medicaid coverage to low-income pregnant women. The Persons with Disabilities coverage group includes persons enrolled in Medicaid Disabled, Medicaid Blind, General Assistance, and Alcohol and Drug Abuse Treatment and Support Act (ADATSA) coverage. The “Other” coverage group includes a small number of persons receiving DSHS medical coverage through programs for refugees and the elderly. Clients who received family planning coverage only were excluded from the analysis.

Employed non-client persons with dependents with DSHS medical coverage were counted if they were part of a household with at least one person who received DSHS medical coverage. To be counted, the employed person had to be identified as the head of household, spouse, or unmarried co-parent of a child in common with the head of household.

Counts of employed clients or persons with dependents with DSHS medical coverage were associated with a single “primary employer” in each month. The vast majority of employed clients or persons with dependents with DSHS medical coverage had a single employer in the month. In cases where the person had more than one employer in the month, the primary employer was defined to be the employer from whom the person received the greatest earnings.

To create an unduplicated count of member months and HRSA expenditures associated with employed persons, in the cases where a dependent was associated with more than one employed person, we associated the dependent with the person who had the highest earnings. For the CY 2008 aggregate data tables, per member per month HRSA Medical Assistance expenditure estimates were based on November 2009 forecast per capita estimates for SFY 2009. Per member per month HRSA Mental Health expenditure estimates were based on statewide average RSN capitation rates for SFY 2009.

For the by-firm tables, per member per month HRSA Medical Assistance expenditures were based on November 2009 forecast estimates for SFY 2009. Per member per month HRSA Mental Health expenditure estimates were based on statewide average RSN capitation rates for SFY 2009.

KEY FINDINGS

1. In the average quarter in CY 2008, there were 975,218 persons with DSHS medical coverage, excluding clients who received only family planning coverage.
2. In the average quarter in CY 2008, there were 107,834 persons with DSHS medical coverage and ESD-reported earnings in the quarter (see Table 2A “All Firms”). This represents about 11 percent of all persons with DSHS medical coverage in the average quarter in CY 2008.
3. The 107,834 employed DSHS persons had 78,181 dependents with DSHS medical coverage, for an average quarterly total of 186,015 covered lives (see Table 2B “All Firms”). This represents 19 percent of all persons with DSHS coverage in the average quarter in CY 2008.
4. In the average quarter in CY 2008, there were 148,655 employed non-client persons with dependents with DSHS coverage (see Table 3A “All Firms”). There were 254,911 dependents with DSHS coverage associated with these employed non-clients (see Table 3B “All Firms”). This represents 26 percent of all persons with DSHS medical coverage in the average quarter in CY 2008.
5. Combining employed clients and non-client persons, there were 256,489 employed DSHS clients or non-client persons with dependents with DSHS medical coverage in the average calendar quarter in CY 2008 (see Table 1A “All Firms”).
6. In the average quarter in CY 2008, there were 440,925 DSHS covered lives associated with the 256,489 employed DSHS clients and persons with dependents with DSHS medical coverage (Table 1B “All Firms”). This represents 45 percent of all persons with DSHS medical coverage in the average quarter in CY 2008.
7. The 256,489 employed DSHS medical clients or non-client persons with dependents with DSHS medical coverage in CY 2008 represented a 10 percent increase over the 231,111 employed clients/persons observed in CY 2007.
8. In CY 2008, about 60 percent of employed DSHS clients and non-client persons with dependents with DSHS coverage were employed by firms with more than 50 employees (Table 2A and 3A “All Firms”).
9. Employed non-client persons with dependents with DSHS medical coverage worked more hours than employed DSHS medical clients. Nearly half of employed non-client persons with dependents with DSHS coverage worked full-time (more than 455 hours) in the quarter (Table 3A “All Firms”), compared to only 16 percent of employed clients (Table 2A “All Firms”).
10. There were nearly 5 million months of DSHS medical coverage in CY 2008 associated with employed DSHS clients and non-client persons with dependents with DSHS medical coverage. About forty percent of the months were associated with employed DSHS clients (2,050,744 months), and about 60 percent were associated with employed non-client persons with dependents with DSHS coverage (2,919,136 months).
11. Estimated DSHS medical and mental health expenditures for the months of coverage associated with employed clients and non-client persons with dependents with DSHS coverage were \$1.264 billion in CY 2008 (all funds). Of this total, approximately \$682 million were associated with employed DSHS medical clients, and \$582 million were associated with employed non-client persons with dependents with DSHS medical coverage.
12. Associated annual DSHS coverage costs were greatest for persons employed in the following industries: Health and Social Assistance (\$192 million); Retail Trade (\$180 million); and Accommodation and Food Services (\$166 million).
13. Almost all (92.5 percent) of the annual DSHS coverage costs were associated with private employers (\$1.17 billion), as opposed to public employers (\$94 million).

TRENDS IN EMPLOYMENT

The table below provides an overview of the trend in the proportion of DSHS medical clients associated with employment from 2005 to 2008, as identified using ESD quarterly earnings data. The overall proportion of DSHS clients associated with employment (clients who were employed or the dependent of an employed person) remained in the range of 44 to 47 percent of the overall DSHS medical caseload from 2005 through 2008. Some of the year-to-year variation in the table below is the result of slight changes in data processing methods over the reporting period.

**DSHS Medical Program's Employed Clients and Non-Client Persons
with Dependents with DSHS Medical Coverage**

	Employed DSHS Clients and Non- DSHS Clients with Dependent DSHS Clients	Average Quarterly DSHS Medical Covered Lives	Average Quarterly DSHS Enrollment	Percent of DSHS Clients Associated with Employment
CY 2005	240,062	425,765	936,860	45%
CY 2006	243,114	427,448	908,870	47%
CY 2007	231,111	404,026	915,322	44%
CY 2007	256,489	440,925	975,218	45%



Aggregate Tables

Employment Status of Medical Assistance Clients and Persons
with Dependents with DSHS Medical Coverage:

Calendar Year 2008



TABLE 1B. Total Employed DSHS Medical Assistance Clients and Non-Client Persons with Dependents with DSHS Medical Coverage

	Number of Employed Clients or Persons with Dependents			Annual Profile		
	YEARLY Average per Quarter	Percent of Total Employed Clients/Persons	Average Quarterly Covered Lives Associated with Employed Clients/Persons	Annual Months of DSHS Coverage Associated with Employed Clients/Persons	Annual DSHS Medical and Mental Health Costs for Associated DSHS Coverage (Estimated)	
All Firms	256,489	100.0%	440,925	4,969,880	\$1,264,371,865	
By Industry						
Agriculture (11)	19,912	7.8%	34,956	404,429	\$89,787,477	
Mining (21)	173	0.1%	382	4,263	\$913,558	
Utilities (22)	261	0.1%	541	6,070	\$1,400,296	
Construction (23)	15,506	6.0%	32,241	361,513	\$84,115,129	
Manufacturing (31-33)	20,641	8.0%	40,848	462,451	\$106,281,718	
Wholesale Trade (42)	8,147	3.2%	15,579	176,250	\$40,786,073	
Retail Trade (44)	37,023	14.4%	58,645	657,400	\$179,729,459	
Transportation/Warehousing (48)	6,113	2.4%	12,247	137,159	\$33,539,200	
Information (51)	2,443	1.0%	3,934	43,697	\$11,240,672	
Finance and Insurance (52)	4,583	1.8%	7,960	88,898	\$21,540,315	
Real Estate (53)	4,859	1.9%	8,426	94,438	\$24,475,435	
Professional/Technical (54)	5,433	2.1%	9,212	102,951	\$26,240,850	
Management (55)	190	0.1%	336	3,769	\$885,646	
Administrative/Waste (56)	20,768	8.1%	37,006	412,480	\$113,889,392	
Educational Services (61)	9,550	3.7%	15,922	181,445	\$43,567,539	
Health Care, Soc. Assistance (62)	37,369	14.6%	65,992	747,195	\$191,821,970	
Arts and Entertainment (71)	6,699	2.6%	10,560	117,912	\$32,241,129	
Accommodation and Food (72)	38,159	14.9%	53,250	597,646	\$165,644,871	
Other Services (81)	13,019	5.1%	22,329	252,264	\$67,312,419	
Other Government (92)	5,374	2.1%	9,988	111,731	\$27,491,472	
Unknown	268	0.1%	576	5,919	\$1,467,243	
By Ownership Type						
Public	19,113	7.5%	34,346	387,420	\$93,868,307	
Private	237,376	92.5%	406,580	4,582,460	\$1,170,503,558	
Unknown	0	0.0%	0	0	\$0	
By Firm Size						
1-50	100,267	39.1%	172,038	1,939,612	\$487,499,769	
51-100	24,633	9.6%	42,911	484,415	\$121,118,643	
101-1000	83,259	32.5%	144,602	1,631,568	\$413,339,386	
1001-5000	35,184	13.7%	59,619	670,085	\$175,154,018	
5000+	13,146	5.1%	21,755	244,200	\$67,260,048	
Unknown	0	0.0%	0	0	\$0	



**TABLE 2A.
Employed DSHS Medical Assistance Clients**

	Number of Employed Clients with DSHS Coverage										Yearly Average per Quarter			
	QUARTER				YEARLY Average per Quarter	Percent of Total Employed Clients	BY HOURS WORKED IN QUARTER			Unknown				
	1	2	3	4			1 to 261	262 to 455	More than 455					
All Firms	102,802	109,377	115,569	103,589	107,834	100.0%	62,608	25,726	16,615	2,886				
By Industry														
Agriculture (11)	2,864	5,304	7,335	4,117	4,905	4.5%	3,139	926	833	7				
Mining (21)	30	40	42	31	36	0.0%	18	8	9	1				
Utilities (22)	77	75	71	55	70	0.1%	31	18	21	0				
Construction (23)	3,934	4,186	4,567	3,761	4,112	3.8%	2,407	1,027	663	15				
Manufacturing (31-33)	4,718	4,833	5,593	4,902	5,012	4.6%	2,251	1,265	1,489	6				
Wholesale Trade (42)	2,081	2,198	2,273	1,979	2,133	2.0%	985	531	607	11				
Retail Trade (44)	19,008	18,719	19,349	19,625	19,175	17.8%	10,605	4,903	3,375	293				
Transportation/Warehousing (48)	1,965	1,958	2,093	1,969	1,996	1.9%	1,001	526	458	12				
Information (51)	1,012	1,106	1,049	1,083	1,063	1.0%	661	215	178	9				
Finance and Insurance (52)	1,437	1,428	1,401	1,404	1,418	1.3%	519	444	445	9				
Real Estate (53)	1,869	1,995	2,008	1,889	1,940	1.8%	1,113	439	382	7				
Professional/Technical (54)	2,432	2,308	2,106	2,141	2,247	2.1%	1,405	459	371	13				
Management (55)	53	52	60	60	56	0.1%	23	17	16	0				
Administrative/Waste (56)	10,595	11,323	11,800	10,110	10,957	10.2%	7,559	2,089	1,235	74				
Educational Services (61)	3,110	3,087	2,805	3,238	3,060	2.8%	2,364	516	179	1				
Health Care, Soc. Assistance (62)	15,397	15,446	15,893	15,434	15,543	14.4%	8,046	4,645	2,825	27				
Arts and Entertainment (71)	2,907	3,496	4,053	3,075	3,383	3.1%	2,253	736	393	2				
Accommodation and Food (72)	21,686	23,683	23,976	21,210	22,639	21.0%	14,809	5,571	2,244	15				
Other Services (81)	5,754	6,010	6,120	5,623	5,877	5.4%	2,134	996	472	2,276				
Other Government (92)	1,739	1,980	2,869	1,832	2,105	2.0%	1,287	395	423	1				
Unknown	134	150	106	51	110	0.1%	0	0	0	110				
By Ownership Type														
Public	6,219	6,518	7,304	6,358	6,600	6.1%	4,095	1,359	1,035	111				
Private	96,583	102,859	108,265	97,231	101,235	93.9%	58,514	24,366	15,580	2,775				
Unknown	0	0	0	0	0	0.0%	0	0	0	0				
By Firm Size														
1-50	38,798	42,077	44,530	39,282	41,172	38.2%	24,746	9,712	5,103	1,611				
51-100	9,808	10,414	10,863	8,898	9,996	9.3%	5,829	2,535	1,622	10				
101-1000	33,246	34,588	37,085	33,429	34,587	32.1%	20,139	8,444	5,814	191				
1001-5000	13,904	15,791	17,989	14,605	15,572	14.4%	9,043	3,581	2,776	172				
5000+	7,046	6,507	5,102	7,375	6,508	6.0%	2,852	1,454	1,300	902				
Unknown	0	0	0	0	0	0.0%	0	0	0	0				



TABLE 2B.
Employed DSHS Medical Assistance Clients

		Number of Employed Clients with DSHS Coverage				Annual Profile	
	YEARLY Average per Quarter	Percent of Total Employed Clients	Average Quarterly Covered Lives Associated with Employed Clients	Annual Months of DSHS Coverage Associated with Employed Clients	Annual DSHS Medical and Mental Health Costs for Associated DSHS Coverage (Estimated)		
All Firms	107,834	100.0%	186,015	2,050,744	\$681,987,215		
By Industry							
Agriculture (11)	4,905	4.5%	6,955	77,305	\$24,547,652		
Mining (21)	36	0.0%	87	946	\$272,325		
Utilities (22)	70	0.1%	156	1,694	\$497,195		
Construction (23)	4,112	3.8%	9,067	98,719	\$29,210,614		
Manufacturing (31-33)	5,012	4.6%	10,614	116,610	\$36,398,793		
Wholesale Trade (42)	2,133	2.0%	4,373	47,937	\$15,083,180		
Retail Trade (44)	19,175	17.8%	30,492	336,210	\$114,891,621		
Transportation/Warehousing (48)	1,996	1.9%	4,505	49,168	\$15,453,927		
Information (51)	1,063	1.0%	1,525	16,501	\$5,782,389		
Finance and Insurance (52)	1,418	1.3%	2,796	30,284	\$10,410,666		
Real Estate (53)	1,940	1.8%	3,529	38,618	\$13,337,829		
Professional/Technical (54)	2,247	2.1%	3,826	42,024	\$14,292,923		
Management (55)	56	0.1%	103	1,104	\$382,530		
Administrative/Waste (56)	10,957	10.2%	20,741	226,910	\$75,609,314		
Educational Services (61)	3,060	2.8%	5,593	62,900	\$20,515,358		
Health Care, Soc. Assistance (62)	15,543	14.4%	30,787	342,744	\$115,261,384		
Arts and Entertainment (71)	3,383	3.1%	5,300	58,171	\$20,383,349		
Accommodation and Food (72)	22,639	21.0%	30,511	336,471	\$114,026,489		
Other Services (81)	5,877	5.4%	11,079	122,780	\$41,371,363		
Other Government (92)	2,105	2.0%	3,694	40,855	\$13,463,123		
Unknown	110	0.1%	284	2,793	\$795,190		
By Ownership Type							
Public	6,600	6.1%	12,586	139,841	\$45,385,537		
Private	101,235	93.9%	173,429	1,910,903	\$636,601,678		
Unknown	0	0.0%	0	0	\$0		
By Firm Size							
1-50	41,172	38.2%	70,661	777,873	\$253,720,016		
51-100	9,996	9.3%	17,078	188,408	\$62,112,653		
101-1000	34,587	32.1%	60,258	665,296	\$221,650,851		
1001-5000	15,572	14.4%	27,037	297,677	\$101,643,373		
5000+	6,508	6.0%	10,981	121,490	\$42,860,322		
Unknown	0	0.0%	0	0	\$0		



January 2010

Washington State Department of Social and Health Services

DSHS | Employment of Medical Assistance Clients

Research and Data Analysis Division

TABLE 3A.

Employed Non-Client Persons with Dependents with DSHS Medical Coverage

	Number of Employed Non-Client Persons with Dependents										Percent of Total Employed Non-Client Persons	Yearly Average per Quarter		
	QUARTER				YEARLY Average per Quarter	BY HOURS WORKED IN QUARTER								
	1	2	3	4		1 to 261	262 to 455	More than 455	Unknown					
All Firms	142,922	147,976	151,539	152,181	148,655	100.0%	32,080	40,727	73,074	2,773				
By Industry														
Agriculture (11)	13,155	15,370	16,139	15,364	15,007	10.1%	4,233	3,662	7,098	14				
Mining (21)	127	135	144	142	137	0.1%	23	33	81	0				
Utilities (22)	193	193	188	193	192	0.1%	32	31	129	0				
Construction (23)	11,215	11,537	11,595	11,227	11,394	7.7%	2,944	3,456	4,958	36				
Manufacturing (31-33)	15,318	15,369	15,977	15,854	15,630	10.5%	1,731	3,101	10,786	12				
Wholesale Trade (42)	5,905	5,978	6,030	6,143	6,014	4.0%	745	1,113	4,137	19				
Retail Trade (44)	17,594	17,529	17,835	18,434	17,848	12.0%	3,204	4,699	9,802	143				
Transportation/Warehousing (48)	3,912	4,020	4,181	4,355	4,117	2.8%	837	1,097	2,159	25				
Information (51)	1,376	1,378	1,360	1,408	1,381	0.9%	263	326	786	5				
Finance and Insurance (52)	3,114	3,102	3,214	3,230	3,165	2.1%	406	782	1,970	8				
Real Estate (53)	2,878	2,900	2,961	2,937	2,919	2.0%	541	678	1,694	7				
Professional/Technical (54)	3,172	3,189	3,142	3,243	3,187	2.1%	671	800	1,700	16				
Management (55)	128	129	142	136	134	0.1%	15	21	98	0				
Administrative/Waste (56)	9,284	9,758	10,227	9,976	9,811	6.6%	3,013	2,679	4,045	75				
Educational Services (61)	6,534	6,633	5,929	6,864	6,490	4.4%	2,972	2,200	1,316	2				
Health Care, Soc. Assistance (62)	20,779	21,503	22,308	22,714	21,826	14.7%	3,851	6,945	11,000	30				
Arts and Entertainment (71)	3,112	3,279	3,432	3,441	3,316	2.2%	805	1,002	1,509	1				
Accommodation and Food (72)	14,959	15,515	15,866	15,741	15,520	10.4%	4,087	5,946	5,478	9				
Other Services (81)	6,867	7,024	7,300	7,376	7,142	4.8%	1,214	1,529	2,186	2,213				
Other Government (92)	3,075	3,238	3,438	3,324	3,269	2.2%	496	628	2,144	1				
Unknown	225	197	131	79	158	0.1%	0	0	0	158				
By Ownership Type														
Public	12,311	12,577	12,160	13,005	12,513	8.4%	3,545	3,472	5,337	160				
Private	130,611	135,399	139,379	139,176	136,141	91.6%	28,536	37,256	67,737	2,613				
Unknown	0	0	0	0	0	0.0%	0	0	0	0				
By Firm Size														
1-50	56,801	58,363	59,879	61,339	59,096	39.8%	14,747	16,958	25,930	1,461				
51-100	14,325	15,002	15,002	14,219	14,637	9.8%	2,722	3,726	8,180	10				
101-1000	47,229	48,425	49,595	49,439	48,672	32.7%	9,304	12,612	26,609	148				
1001-5000	17,485	19,469	22,154	19,339	19,612	13.2%	4,428	5,969	9,146	69				
5000+	7,082	6,717	4,909	7,845	6,638	4.5%	880	1,463	3,210	1,086				
Unknown	0	0	0	0	0	0.0%	0	0	0	0				



TABLE 3B.

Employed Non-Client Persons with Dependents with DSHS Medical Coverage

	Number of Employed Non-Client Persons with Dependents			Annual Profile		
	YEARLY Average per Quarter	Percent of Total Employed Non-Client Persons	Average Quarterly Covered Lives Associated with Employed Non-Client Persons	Annual Months of DSHS Coverage Associated with Employed Non-Client Persons	Annual DSHS Medical and Mental Health Costs for Associated DSHS Coverage (Estimated)	
CY 2008	148,655	100.0%	254,911	2,919,136	\$582,384,650	
By Industry						
Agriculture (11)	15,007	10.1%	28,001	327,124	\$65,239,826	
Mining (21)	137	0.1%	295	3,317	\$641,233	
Utilities (22)	192	0.1%	386	4,376	\$903,101	
Construction (23)	11,394	7.7%	23,174	262,794	\$54,904,515	
Manufacturing (31-33)	15,630	10.5%	30,234	345,841	\$69,882,926	
Wholesale Trade (42)	6,014	4.0%	11,206	128,313	\$25,702,894	
Retail Trade (44)	17,848	12.0%	28,152	321,190	\$64,837,838	
Transportation/Warehousing (48)	4,117	2.8%	7,741	87,991	\$18,085,273	
Information (51)	1,381	0.9%	2,410	27,196	\$5,458,283	
Finance and Insurance (52)	3,165	2.1%	5,164	58,614	\$11,129,649	
Real Estate (53)	2,919	2.0%	4,897	55,820	\$11,137,606	
Professional/Technical (54)	3,187	2.1%	5,386	60,927	\$11,947,927	
Management (55)	134	0.1%	233	2,665	\$503,116	
Administrative/Waste (56)	9,811	6.6%	16,265	185,570	\$38,280,078	
Educational Services (61)	6,490	4.4%	10,330	118,545	\$23,052,181	
Health Care, Soc. Assistance (62)	21,826	14.7%	35,206	404,451	\$76,560,586	
Arts and Entertainment (71)	3,316	2.2%	5,260	59,741	\$11,857,780	
Accommodation and Food (72)	15,520	10.4%	22,739	261,175	\$51,618,382	
Other Services (81)	7,142	4.8%	11,250	129,484	\$25,941,056	
Other Government (92)	3,269	2.2%	6,293	70,876	\$14,028,348	
Unknown	158	0.1%	292	3,126	\$672,053	
By Ownership Type						
Public	12,513	8.4%	21,760	247,579	\$48,482,771	
Private	136,141	91.6%	233,151	2,671,557	\$533,901,879	
Unknown	0	0.0%	0	0	\$0	
By Firm Size						
1-50	59,096	39.8%	101,377	1,161,739	\$233,779,753	
51-100	14,637	9.8%	25,833	296,007	\$59,005,990	
101-1000	48,672	32.7%	84,344	966,272	\$191,688,535	
1001-5000	19,612	13.2%	32,582	372,408	\$73,510,646	
5000+	6,638	4.5%	10,775	122,710	\$24,399,727	
Unknown	0	0.0%	0	0	\$0	



By Firm Tables

ABRIDGED

Employment of Medical Assistance Clients and Persons with
Dependents with DSHS Medical Coverage by Firm:

January and June 2009

NOTE: In the ABRIDGED version, tables, detail is provided for the top 10 firms. For other firms, see the full report available at: www.dshs.wa.gov/rda

Rank of Firms by Number of DSHS Medical Clients, High to Low

(Ranking Based on the January and June 2009 Number of Associated DSHS Medical Clients)

Rank	Employer	Average Number of Employed Clients/Persons	Percent of Total Employed Clients/Persons	Number of Associated DSHS Member Months, Jan and June	Percent of Total Associated DSHS Member Months, Jan and June
1	WAL-MART STORES INC	3,123	1.32%	11,341	0.58%
2	MCDONALDS CORPORATION	2,359	1.00%	6,552	0.34%
3	SAFEWAY	1,561	0.66%	4,534	0.23%
4	YUM! BRANDS INC	1,087	0.46%	3,106	0.16%
5	THE KROGER CO	1,081	0.46%	3,349	0.17%
6	JACK IN THE BOX	896	0.38%	2,677	0.14%
7	ZIRKLE FRUIT COMPANY	795	0.34%	3,030	0.16%
8	SEARS HOLDINGS CORPORATION	700	0.30%	2,312	0.12%
9	TRIARC COMPANIES INC	685	0.29%	1,914	0.10%
10	TARGET CORPORATION	663	0.28%	2,119	0.11%
11	STEMILT GROWERS INC	632	0.27%	1,964	0.10%
12	SUBWAY RESTAURANTS	584	0.25%	1,722	0.09%
13	BURGER KING	580	0.25%	1,816	0.09%
14	THE HOME DEPOT	542	0.23%	1,907	0.10%
15	GOODWILL INDUSTRIES INTERNATIONAL	528	0.22%	1,962	0.10%
16	DINEEQUITY	490	0.21%	1,632	0.08%
17	MACY'S INC	474	0.20%	1,364	0.07%
18	STARBUCKS CORPORATION	470	0.20%	1,224	0.06%
19	DSHS	457	0.19%	1,764	0.09%
20	CHELAN FRESH MARKETING	447	0.19%	1,433	0.07%
21	SUPERVALU INC	445	0.19%	1,390	0.07%
22	TYSON FOODS INC	430	0.18%	1,835	0.09%
23	BROETJE ORCHARDS	427	0.18%	1,418	0.07%
24	DARDEN RESTAURANTS INC	400	0.17%	1,174	0.06%
25	REGIS CORPORATION	387	0.16%	1,216	0.06%
26	J. C. PENNEY COMPANY INC	386	0.16%	1,106	0.06%
27	LOWE'S COMPANIES INC	379	0.16%	1,281	0.07%
28	RESCARE HOMECARE	373	0.16%	1,180	0.06%
29	CONAGRA FOODS INC	354	0.15%	1,608	0.08%
30	RAINIER SCHOOL DISTRICT	346	0.15%	804	0.04%
30	RED ROBIN	346	0.15%	1,008	0.05%
32	CATHOLIC COMMUNITY SERVICES	342	0.14%	1,139	0.06%
33	ABM INDUSTRIES INCORPORATED	341	0.14%	1,263	0.06%
34	YMCA	338	0.14%	1,001	0.05%
35	UNIVERSITY OF WASHINGTON	336	0.14%	1,105	0.06%
36	COSTCO WHOLESALE CORPORATION	335	0.14%	1,281	0.07%
37	SHARI'S MANAGEMENT CORPORATION	335	0.14%	1,090	0.06%
38	DENNY'S CORPORATION	330	0.14%	1,129	0.06%
39	KNOWLEDGE LEARNING CORPORATION	323	0.14%	1,082	0.06%
40	WASHINGTON STATE UNIVERSITY	321	0.14%	992	0.05%
41	WASHINGTON BEEF LLC	319	0.14%	1,328	0.07%
42	CHOICE HOTELS INTERNATIONAL	319	0.13%	1,174	0.06%
43	BOEING	318	0.13%	1,177	0.06%
43	WALGREEN CO	318	0.13%	1,103	0.06%
45	EVANS FRUIT COMPANY	314	0.13%	1,224	0.06%
45	MULTICARE	314	0.13%	1,201	0.06%
47	EXPRESS PERSONNEL	303	0.13%	1,035	0.05%
48	BERKSHIRE HATHAWAY	294	0.12%	737	0.04%
49	KAHALA CORPORATION	290	0.12%	789	0.04%
50	WASHINGTON FRUIT & PRODUCE	283	0.12%	1,099	0.06%
51	TRUEBLUE INC	282	0.12%	949	0.05%

Rank of Firms by Number of DSHS Medical Clients, High to Low

(Ranking Based on the January and June 2009 Number of Associated DSHS Medical Clients)

Rank	Employer	Average Number of Employed Clients/Persons	Percent of Total Employed Clients/Persons	Number of Associated DSHS Member Months, Jan and June	Percent of Total Associated DSHS Member Months, Jan and June
51	WYNDHAM WORLDWIDE CORPORATION	282	0.12%	888	0.05%
53	US ARMY	281	0.12%	1,318	0.07%
54	THE BLACKSTONE GROUP	276	0.12%	973	0.05%
55	ADDUS HEALTHCARE INC	273	0.12%	1,017	0.05%
56	CHESTERFIELD SERVICES	263	0.11%	985	0.05%
56	RED LION HOTELS CORPORATION	263	0.11%	919	0.05%
58	BORTON & SONS INC	260	0.11%	949	0.05%
59	RITE AID	259	0.11%	828	0.04%
60	PUYALLUP TRIBE OF INDIANS	254	0.11%	894	0.05%
61	WEST CORPORATION	253	0.11%	904	0.05%
62	ROSS STORES INC	252	0.11%	876	0.04%
63	DOLLAR TREE STORES INC	242	0.10%	854	0.04%
64	MUCKLESHOOT INDIAN TRIBE	238	0.10%	965	0.05%
65	CHEVRON CORPORATION	235	0.10%	857	0.04%
65	KELLY SERVICES INC	235	0.10%	750	0.04%
67	MCDUGALL & SONS INC	235	0.10%	732	0.04%
68	SERVICEMASTER	233	0.10%	857	0.04%
69	BEST WESTERN INTERNATIONAL INC	230	0.10%	739	0.04%
70	SEA MAR COMMUNITY HEALTH CENTERS	228	0.10%	786	0.04%
71	AFFILIATED COMPUTER SERVICES INC	228	0.10%	883	0.05%
72	US POSTAL SERVICE	226	0.10%	844	0.04%
73	HOME CARE OF WASHINGTON	225	0.10%	775	0.04%
73	NORDSTROM INC	225	0.10%	649	0.03%
75	BANK OF AMERICA	225	0.10%	661	0.03%
76	YAKIMA VALLEY FARM WORKERS CLINIC	221	0.09%	884	0.05%
77	U.S. BANCORP	214	0.09%	687	0.04%
78	INTERCONTINENTAL HOTELS GROUP	212	0.09%	686	0.04%
79	UNITED PARCEL SERVICE INC	208	0.09%	724	0.04%
80	WASHINGTON STATE MIGRANT COUNCIL	205	0.09%	736	0.04%
81	WINCO HOLDINGS INC	204	0.09%	760	0.04%
82	BARRETT BUSINESS SERVICES	203	0.09%	706	0.04%
83	DOVEX FRUIT COMPANY	198	0.08%	713	0.04%
84	7-ELEVEN INC	195	0.08%	657	0.03%
85	WELLS FARGO & CO	194	0.08%	659	0.03%
86	WYCKOFF FARMS INC	189	0.08%	744	0.04%
87	TJX COMPANIES INC	187	0.08%	496	0.03%
88	YAKAMA NATION	185	0.08%	849	0.04%
89	TACOMA SCHOOL DISTRICT	184	0.08%	738	0.04%
90	PAPA MURPHY'S INTERNATIONAL INC	182	0.08%	465	0.02%
91	SALVATION ARMY	179	0.08%	804	0.04%
92	BLUE BIRD INC	177	0.07%	595	0.03%
93	J. R. SIMPLOT COMPANY	176	0.07%	770	0.04%
94	DOMINO'S PIZZA INC	175	0.07%	539	0.03%
95	THE SEATTLE TIMES COMPANY	174	0.07%	680	0.03%
96	SACRED HEART MEDICAL CENTER	173	0.07%	636	0.03%
97	ALLEGIS GROUP	169	0.07%	628	0.03%
98	TULALIP TRIBES	168	0.07%	745	0.04%
99	VALUE VILLAGE	166	0.07%	629	0.03%
100	AUVIL FRUIT COMPANY	165	0.07%	592	0.03%
100	FEDEX CORPORATION	165	0.07%	632	0.03%
100	KOHL'S	165	0.07%	470	0.02%

Rank of Firms by Number of DSHS Medical Clients, High to Low

(Ranking Based on the January and June 2009 Number of Associated DSHS Medical Clients)

Rank	Employer	Average Number of Employed Clients/Persons	Percent of Total Employed Clients/Persons	Number of Associated DSHS Member Months, Jan and June	Percent of Total Associated DSHS Member Months, Jan and June
103	ST JOSEPH HOSPITAL	158	0.07%	558	0.03%
104	FIRSTGROUP PLC	157	0.07%	705	0.04%
105	NORTHWEST CENTER INDUSTRIES	155	0.07%	352	0.02%
106	US NAVY	152	0.06%	483	0.02%
107	FIESTA FOODS	150	0.06%	510	0.03%
108	GROUP HEALTH COOPERATIVE	149	0.06%	635	0.03%
109	VALLEY FRUIT	148	0.06%	540	0.03%
110	SEATTLE SCHOOL DISTRICT	147	0.06%	569	0.03%
111	AMICABLE HEALTH CARE	146	0.06%	710	0.04%
112	SPOKANE SCHOOL DISTRICT	145	0.06%	447	0.02%
113	GREAT CLIPS INC	145	0.06%	467	0.02%
114	HAGGEN FOOD & PHARMACY	143	0.06%	411	0.02%
115	MONSON FRUIT COMPANY	140	0.06%	492	0.03%
116	WESTPORT SHIPYARD	139	0.06%	512	0.03%
117	CSK AUTO INC	138	0.06%	510	0.03%
117	KOREAN WOMEN'S ASSOCIATION	138	0.06%	469	0.02%
119	KALISPEL TRIBE OF INDIANS	136	0.06%	485	0.02%
120	YAKIMA SCHOOL DISTRICT	136	0.06%	438	0.02%
121	THE FLAT TOP RANCH	135	0.06%	567	0.03%
122	CORPORATION FOR NATIONAL AND COMMUNITY SERVICE	134	0.06%	611	0.03%
123	ALASKA AIR GROUP	133	0.06%	433	0.02%
124	COMPASS GROUP PLC	132	0.06%	406	0.02%
125	YWCA	131	0.06%	557	0.03%
126	CRUNCH PAK	130	0.06%	452	0.02%
126	GILBERT ORCHARDS	130	0.06%	410	0.02%
128	AMBITIONS	127	0.05%	419	0.02%
129	AZTECA MEXICAN RESTAURANT	126	0.05%	379	0.02%
130	GROCERY OUTLET INC	124	0.05%	439	0.02%
130	QUIZNO'S SUB	124	0.05%	282	0.01%
132	EPIC	122	0.05%	441	0.02%
132	MARRIOTT INTERNATIONAL INC	122	0.05%	454	0.02%
132	THE GAP INCORPORATED	122	0.05%	289	0.01%
135	ER SOLUTIONS	122	0.05%	451	0.02%
135	PASCO SCHOOL DISTRICT	122	0.05%	461	0.02%
137	BP PRODUCTS NORTH AMERICA INC	121	0.05%	466	0.02%
138	LIFE CARE CENTERS OF AMERICA	121	0.05%	447	0.02%
139	BEST BUY CO INC	119	0.05%	339	0.02%
140	CHEHALIS TRIBE	118	0.05%	379	0.02%
140	CUSTOM APPLE PACKERS INC	118	0.05%	364	0.02%
142	COMCAST	117	0.05%	490	0.03%
143	EVERGREEN SCHOOL DISTRICT	116	0.05%	402	0.02%
144	MATSON FRUIT COMPANY	116	0.05%	453	0.02%
145	BAKER PRODUCE INC	115	0.05%	362	0.02%
145	MANPOWER INC	115	0.05%	443	0.02%
147	CPC INTERNATIONAL	113	0.05%	344	0.02%
147	TEREX CORPORATION	113	0.05%	545	0.03%
149	SQUAXIN ISLAND INDIAN TRIBE	111	0.05%	399	0.02%
150	JIFFY LUBE	111	0.05%	423	0.02%
150	LES SCHWAB	111	0.05%	429	0.02%
150	SEATTLE GOODWILL	111	0.05%	402	0.02%
153	FOSTER FARMS	110	0.05%	428	0.02%

Rank of Firms by Number of DSHS Medical Clients, High to Low

(Ranking Based on the January and June 2009 Number of Associated DSHS Medical Clients)

Rank	Employer	Average Number of Employed Clients/Persons	Percent of Total Employed Clients/Persons	Number of Associated DSHS Member Months, Jan and June	Percent of Total Associated DSHS Member Months, Jan and June
153	SHOPKO	110	0.05%	300	0.02%
155	PRIDE PACKING	107	0.05%	434	0.02%
155	ROCKWOOD CLINIC	107	0.05%	374	0.02%
157	OLD COUNTRY BUFFET	106	0.04%	326	0.02%
158	OLYMPIC FRUIT	103	0.04%	329	0.02%
159	BIG LOTS INC	101	0.04%	366	0.02%
160	CITY OF SEATTLE	99	0.04%	372	0.02%
160	SECURITAS AB	99	0.04%	309	0.02%
160	SUNRISE SERVICES	99	0.04%	411	0.02%
160	YOKE'S FRESH MARKETS	99	0.04%	319	0.02%
164	NATIONAL FOOD CORP	99	0.04%	363	0.02%
165	TOYS 'R' US	98	0.04%	260	0.01%
165	VIRGINIA MASON HOSPITAL	98	0.04%	356	0.02%
167	LIQUIDATION OUTLET INC	97	0.04%	304	0.02%
167	VOLT INFORMATION SCIENCES INC	97	0.04%	362	0.02%
169	CENTERFORCE	96	0.04%	196	0.01%
169	ICT GROUP INC	96	0.04%	358	0.02%
171	TELETECH HOLDINGS INC	95	0.04%	326	0.02%
172	TRIDENT SEAFOODS	95	0.04%	394	0.02%
173	SERVICE ALTERNATIVES	94	0.04%	372	0.02%
174	MERRILL GARDENS	94	0.04%	256	0.01%
175	OUTBACK STEAKHOUSE	93	0.04%	267	0.01%
176	DOUGLAS FRUIT	92	0.04%	350	0.02%
176	KIDS COUNTRY	92	0.04%	302	0.02%
178	NW MANAGEMENT	92	0.04%	349	0.02%
179	KEY BANK	90	0.04%	296	0.02%
180	PANDA EXPRESS	90	0.04%	292	0.01%
181	SL START	89	0.04%	331	0.02%
181	SODEXO INC	89	0.04%	248	0.01%
183	ARAMARK	88	0.04%	290	0.01%
184	PAPA JOHNS	88	0.04%	288	0.01%
184	PETCO	88	0.04%	255	0.01%
186	COMMUNITY HEALTH CARE	87	0.04%	336	0.02%
187	REMEDY	87	0.04%	323	0.02%
188	ELITE INTERNATIONAL	86	0.04%	220	0.01%
189	BENEFICIAL IN-HOME CARE	86	0.04%	312	0.02%
189	BROWN & COLE STORES	86	0.04%	311	0.02%
189	ELITE HOME CARE	86	0.04%	285	0.01%
189	SPHERION (ATLANTIC ENTERPRISES LLC)	86	0.04%	358	0.02%
193	KING COUNTY	85	0.04%	337	0.02%
194	SPOKANE TRIBE OF INDIAN	85	0.04%	372	0.02%
195	COLUMBIA FRUIT	84	0.04%	308	0.02%
195	ZIP'S DRIVE IN	84	0.04%	238	0.01%
197	BLOCKBUSTER INC	83	0.04%	235	0.01%
197	SNOKIST GROWERS	83	0.04%	277	0.01%
197	YELLOW CAB	83	0.04%	491	0.03%
200	VISITING ANGELS	83	0.03%	285	0.01%
201	MICHAEL'S STORES INC	82	0.03%	269	0.01%
201	PITNEY BOWES	82	0.03%	299	0.02%
203	KENT SCHOOL DISTRICT	82	0.03%	243	0.01%
204	VANCOUVER SCHOOL DISTRICT	81	0.03%	277	0.01%

Rank of Firms by Number of DSHS Medical Clients, High to Low

(Ranking Based on the January and June 2009 Number of Associated DSHS Medical Clients)

Rank	Employer	Average Number of Employed Clients/Persons	Percent of Total Employed Clients/Persons	Number of Associated DSHS Member Months, Jan and June	Percent of Total Associated DSHS Member Months, Jan and June
205	HOLLYWOOD VIDEO	81	0.03%	194	0.01%
206	NORTHWEST HORTICULTURE	80	0.03%	319	0.02%
206	PAYLESS SHOE SOURCE	80	0.03%	204	0.01%
206	PETSMART	80	0.03%	196	0.01%
209	DAVENPORT HOTEL	79	0.03%	333	0.02%
210	GREAT WOLF LODGE	79	0.03%	259	0.01%
211	ACE HARDWARE CORPORATION	78	0.03%	240	0.01%
212	ACCOR HOTELS	78	0.03%	276	0.01%
212	ROYAL DUTCH SHELL PLC	78	0.03%	288	0.01%
212	TREE TOP	78	0.03%	341	0.02%
215	VALLEY MEDICAL CENTER	76	0.03%	282	0.01%
216	YAKIMA VALLEY MEMORIAL HOSPITAL	76	0.03%	264	0.01%
217	VALLEY ROZ	75	0.03%	330	0.02%
218	NISQUALLY INDIAN TRIBE	75	0.03%	270	0.01%
219	EAGLE HEALTHCARE	74	0.03%	250	0.01%
219	OFFICE DEPOT	74	0.03%	250	0.01%
219	WASHINGTON BULB	74	0.03%	248	0.01%
222	BARTELL DRUGS	73	0.03%	206	0.01%
223	GENE JUAREZ SALONS	72	0.03%	187	0.01%
224	BLUE STAR GROWERS	72	0.03%	216	0.01%
224	DRAPER VALLEY FARMS	72	0.03%	359	0.02%
224	VANCOUVER CLINIC	72	0.03%	255	0.01%
227	BETHEL SCHOOL DISTRICT	71	0.03%	248	0.01%
227	PIONEER HUMAN SERVICES	71	0.03%	275	0.01%
227	YAKIMA COUNTY	71	0.03%	246	0.01%
230	EDMONDS SCHOOL DISTRICT	71	0.03%	226	0.01%
231	APPLE KING	70	0.03%	216	0.01%
231	MONEYTREE	70	0.03%	273	0.01%
231	TACOMA GOODWILL	70	0.03%	222	0.01%
231	WORK OPPORTUNITIES	70	0.03%	144	0.01%
235	KENNEWICK SCHOOL DISTRICT	70	0.03%	203	0.01%
235	ROSAUERS SUPERMARKETS	70	0.03%	181	0.01%
235	SAKUMA BROTHERS FARMS	70	0.03%	245	0.01%
238	TACO DEL MAR	69	0.03%	190	0.01%
239	PROVIDENCE	68	0.03%	228	0.01%
239	THE HOLLAND INC	68	0.03%	215	0.01%
241	CLARK COLLEGE	68	0.03%	282	0.01%
241	COMMUNITY LIVING	68	0.03%	248	0.01%
243	AVALON CARE CENTER	67	0.03%	235	0.01%
244	ST VINCENT DE PAUL	67	0.03%	240	0.01%
245	LARSON FRUIT	66	0.03%	223	0.01%
245	ROY FARMS	66	0.03%	274	0.01%
245	SUNNYSIDE SCHOOL DISTRICT	66	0.03%	277	0.01%
248	MAXIM HEALTHCARE	66	0.03%	213	0.01%
248	RADIO SHACK	66	0.03%	224	0.01%
248	SCHWARTZ BROTHERS	66	0.03%	186	0.01%
251	CRANE & CRANE	65	0.03%	218	0.01%
251	FEDERAL WAY SCHOOL DISTRICT	65	0.03%	223	0.01%
251	OTHELLO SCHOOL DISTRICT	65	0.03%	226	0.01%
251	SKILLS'KIN	65	0.03%	163	0.01%
255	BOYS & GIRLS CLUB	64	0.03%	230	0.01%

Rank of Firms by Number of DSHS Medical Clients, High to Low

(Ranking Based on the January and June 2009 Number of Associated DSHS Medical Clients)

Rank	Employer	Average Number of Employed Clients/Persons	Percent of Total Employed Clients/Persons	Number of Associated DSHS Member Months, Jan and June	Percent of Total Associated DSHS Member Months, Jan and June
255	HIGHLINE SCHOOL DISTRICT	64	0.03%	237	0.01%
255	QUINULT BEACH RESORT	64	0.03%	256	0.01%
255	UNDERWOOD FRUIT	64	0.03%	191	0.01%
259	COLUMBIA REACH	64	0.03%	227	0.01%
259	GREEN ACRES	64	0.03%	248	0.01%
261	CENTRAL WASHINGTON HOSPITAL	63	0.03%	252	0.01%
261	CKE RESTAURANTS INC	63	0.03%	187	0.01%
263	ADECCO	63	0.03%	221	0.01%
263	DEPT OF CORRECTIONS	63	0.03%	298	0.02%
265	CARLYLE INC	62	0.03%	206	0.01%
265	MORNINGSIDE	62	0.03%	139	0.01%
265	WINDERMERE REAL ESTATE	62	0.03%	188	0.01%
268	AT&T	61	0.03%	245	0.01%
268	BYBEE FOODS	61	0.03%	263	0.01%
268	ELDORADO STONE LLC	61	0.03%	221	0.01%
268	KADLEC HOSPITAL	61	0.03%	240	0.01%
268	MOSES LAKE SCHOOL DISTRICT	61	0.03%	231	0.01%
273	ROUNDTABLE PIZZA	61	0.03%	170	0.01%
273	STARWOOD HOTELS & RESORTS WORLDWIDE INC	61	0.03%	201	0.01%
275	COLVILLE TRIBE	60	0.03%	239	0.01%
275	SKAGIT GARDENS	60	0.03%	211	0.01%
275	SPOKESMAN REVIEW	60	0.03%	187	0.01%
278	CITY OF SPOKANE	60	0.03%	234	0.01%
278	HOLY FAMILY HOSPITAL	60	0.03%	211	0.01%
278	MANOR CARE	60	0.03%	236	0.01%
281	RENTON SCHOOL DISTRICT	59	0.02%	182	0.01%
282	PUYALLUP SCHOOL DISTRICT	59	0.02%	220	0.01%
283	ELMVIEW	58	0.02%	166	0.01%
283	FIRCREST SCHOOL	58	0.02%	123	0.01%
283	SKCAC INDUSTRIES	58	0.02%	125	0.01%
286	DAVITA INC	57	0.02%	232	0.01%
286	HARBORVIEW MEDICAL CENTER	57	0.02%	257	0.01%
286	NORTHERN FRUIT	57	0.02%	209	0.01%
286	STADELMAN FRUIT	57	0.02%	200	0.01%
286	STATE FARM INSURANCE	57	0.02%	200	0.01%
286	THE SUQUAMISH TRIBE	57	0.02%	212	0.01%
286	TWIN CITY FOODS INC	57	0.02%	226	0.01%
293	YAKIMA REGIONAL HOSPITAL	57	0.02%	210	0.01%
294	CENTRAL VALLEY SCHOOL DISTRICT	56	0.02%	180	0.01%
295	AT WORK	56	0.02%	121	0.01%
295	EASTERDAY FARMS	56	0.02%	210	0.01%
295	JPMORGAN CHASE & CO	56	0.02%	182	0.01%
295	LUMBERMENS	56	0.02%	216	0.01%
295	ORONDO FRUIT	56	0.02%	157	0.01%
295	VARSITY CONTRACTORS	56	0.02%	163	0.01%
301	COLUMBIA COLSTOR	55	0.02%	253	0.01%
301	WAREHOUSE DEMO	55	0.02%	140	0.01%
303	BURLINGTON COAT FACTORY	55	0.02%	147	0.01%
303	NOOKSACK INDIAN TRIBE	55	0.02%	185	0.01%
303	QUINULT INDIAN NATION	55	0.02%	219	0.01%
303	QUINCY FOODS	55	0.02%	220	0.01%

Rank of Firms by Number of DSHS Medical Clients, High to Low

(Ranking Based on the January and June 2009 Number of Associated DSHS Medical Clients)

Rank	Employer	Average Number of Employed Clients/Persons	Percent of Total Employed Clients/Persons	Number of Associated DSHS Member Months, Jan and June	Percent of Total Associated DSHS Member Months, Jan and June
307	AUTOGRILL SPA	54	0.02%	166	0.01%
307	H&R BLOCK	54	0.02%	166	0.01%
307	PESHASTIN HI-UP	54	0.02%	140	0.01%
307	RENT A CENTER	54	0.02%	232	0.01%
307	SENIOR LIFE RESOURCES	54	0.02%	212	0.01%
312	MAID BRIGADE	54	0.02%	188	0.01%
312	SKAGIT VALLEY COLLEGE	54	0.02%	219	0.01%
312	TRAVIS INDUSTRIES	54	0.02%	219	0.01%
315	GOLD DIGGER APPLES	53	0.02%	147	0.01%
315	HUNTWOOD INDUSTRIES	53	0.02%	181	0.01%
315	RGIS INVENTORY	53	0.02%	135	0.01%
315	VOLUNTEERS OF AMERICA	53	0.02%	176	0.01%
319	CONGDON ORCHARDS	53	0.02%	189	0.01%
320	C & O NURSERY	52	0.02%	190	0.01%
320	LABOR WORKS	52	0.02%	163	0.01%
320	MC CAIN FOODS	52	0.02%	221	0.01%
323	GREAT AMERICAN CASINO	52	0.02%	182	0.01%
323	WASTE CONNECTIONS	52	0.02%	230	0.01%
323	ZUMIEZ INC	52	0.02%	149	0.01%
326	ALLAN BROTHERS	51	0.02%	181	0.01%
326	COLUMBIA INDUSTRIES	51	0.02%	111	0.01%
326	COMPASS ONE LLC	51	0.02%	158	0.01%
326	MAD ANTHONY'S INC	51	0.02%	138	0.01%
326	MENZIES AVIATION	51	0.02%	145	0.01%
326	SKAGIT VALLEY HOSPITAL	51	0.02%	210	0.01%
326	WENATCHEE SCHOOL DISTRICT	51	0.02%	200	0.01%
333	AUBURN SCHOOL DISTRICT	51	0.02%	215	0.01%
333	CLOVER PARK SCHOOL DISTRICT	51	0.02%	198	0.01%
333	PRICE COLD STORAGE	51	0.02%	182	0.01%
333	ROBERT HALF INTERNATIONAL	51	0.02%	184	0.01%
337	CM HOLTZINGER	50	0.02%	183	0.01%
337	HIGHLAND FRUIT	50	0.02%	219	0.01%
337	IVARS	50	0.02%	129	0.01%
337	SILVER DOLLAR CASINO	50	0.02%	166	0.01%
337	SMITH GARDENS	50	0.02%	178	0.01%
342	FARMER'S INSURANCE	50	0.02%	184	0.01%
342	GRANDVIEW SCHOOL DISTRICT	50	0.02%	194	0.01%
342	PACIFIC SEAFOOD	50	0.02%	205	0.01%
342	RESERS FINE FOODS	50	0.02%	208	0.01%
342	STEMILT MANAGEMENT	50	0.02%	159	0.01%
342	STERLING SAVINGS BANK	50	0.02%	164	0.01%
342	SUNRISE SENIOR LIVING	50	0.02%	174	0.01%
342	SWEDISH HEALTH SERVICES	50	0.02%	209	0.01%
342	WENATCHEE VALLEY MEDICAL CENTER	50	0.02%	160	0.01%
351	EMERALD CITY PIZZA	49	0.02%	116	0.01%
351	JOANN FABRICS	49	0.02%	139	0.01%
351	OLYMPIC COLLEGE	49	0.02%	190	0.01%
351	PEACE HEALTH	49	0.02%	178	0.01%
355	CONOCO PHILLIPS	49	0.02%	193	0.01%
355	SOUTHWEST WASHINGTON MEDICAL CTR	49	0.02%	194	0.01%
355	STAPLES INC	49	0.02%	130	0.01%

Rank of Firms by Number of DSHS Medical Clients, High to Low

(Ranking Based on the January and June 2009 Number of Associated DSHS Medical Clients)

Rank	Employer	Average Number of Employed Clients/Persons	Percent of Total Employed Clients/Persons	Number of Associated DSHS Member Months, Jan and June	Percent of Total Associated DSHS Member Months, Jan and June
355	VERIZON WIRELESS	49	0.02%	198	0.01%
359	VAN WELL NURSERY	48	0.02%	116	0.01%
359	ZIP TRIP	48	0.02%	200	0.01%
361	AUTO ZONE	48	0.02%	183	0.01%
361	CHIEF ORCHARDS	48	0.02%	167	0.01%
361	GENIE MANUFACTURING	48	0.02%	232	0.01%
364	AMAZON.COM	47	0.02%	167	0.01%
364	DEPT OF DEFENSE	47	0.02%	206	0.01%
364	HSC REAL ESTATE	47	0.02%	164	0.01%
364	OVERLAKE HOSPITAL	47	0.02%	185	0.01%
364	REI	47	0.02%	162	0.01%
364	YAKIMA FRUIT AND COLD STORAGE	47	0.02%	159	0.01%
370	MILGARD MANUFACTURING	47	0.02%	216	0.01%
370	PREMERA BLUE CROSS	47	0.02%	196	0.01%
370	WILLAMETTE DENTAL	47	0.02%	181	0.01%
370	YAKIMA VALLEY ORCHARDS	47	0.02%	168	0.01%
374	DOUBLE DIAMOND	46	0.02%	159	0.01%
374	NORTHWEST HOSPITAL	46	0.02%	178	0.01%
374	WASHINGTON POTATO	46	0.02%	220	0.01%
377	NAPA AUTO PARTS	46	0.02%	159	0.01%
378	AVIS RENT A CAR	45	0.02%	183	0.01%
378	GOURMET TRADING CO	45	0.02%	171	0.01%
378	LUMMI NATION	45	0.02%	159	0.01%
381	BI-MART	45	0.02%	166	0.01%
381	FAMILY HEALTH CENTER	45	0.02%	170	0.01%
381	NATIONAL FROZEN FOODS	45	0.02%	190	0.01%
381	PACE STAFFING NETWORK	45	0.02%	152	0.01%
381	PROVIDENT HORIZON GROUP	45	0.02%	116	0.01%
381	STRAND ORCHARDS	45	0.02%	150	0.01%
387	CARDINAL GLASS	44	0.02%	212	0.01%
387	SUNRISE STAFFING	44	0.02%	158	0.01%
387	WHOLE FOODS	44	0.02%	159	0.01%
390	AMTECH CORPORATION	44	0.02%	176	0.01%
390	CRISTA MINISTRIES	44	0.02%	124	0.01%
390	CUSTOM ORCHARDS	44	0.02%	151	0.01%
390	MANSON GROWERS COOPERATIVE	44	0.02%	151	0.01%
390	OBERTO SAUSAGE CO	44	0.02%	135	0.01%
390	OCEAN BEAUTY SEAFOODS	44	0.02%	160	0.01%
390	TRAVIS PATTERN	44	0.02%	151	0.01%
397	24 HOUR FITNESS	43	0.02%	106	0.01%
397	AVON	43	0.02%	110	0.01%
397	BATH AND BODY WORKS	43	0.02%	119	0.01%
397	BATTLE GROUND SCHOOL DISTRICT	43	0.02%	134	0.01%
397	CHILDREN'S HOSPITAL	43	0.02%	161	0.01%
397	LA PETITE ACADEMY	43	0.02%	127	0.01%
397	SHELTON SCHOOL DISTRICT	43	0.02%	123	0.01%
397	SUN PACIFIC ENERGY	43	0.02%	160	0.01%
405	ALLIED BARTON SECURITY	43	0.02%	144	0.01%
405	HARRISON HOSPITAL	43	0.02%	141	0.01%
405	KING FUJI	43	0.02%	128	0.01%
405	MEMORIAL HOSPITAL	43	0.02%	160	0.01%

Rank of Firms by Number of DSHS Medical Clients, High to Low

(Ranking Based on the January and June 2009 Number of Associated DSHS Medical Clients)

Rank	Employer	Average Number of Employed Clients/Persons	Percent of Total Employed Clients/Persons	Number of Associated DSHS Member Months, Jan and June	Percent of Total Associated DSHS Member Months, Jan and June
405	NORTHSTAR RESTAURANTS INC	43	0.02%	91	0.00%
405	VALLEY MANUFACTURED HOUSING	43	0.02%	147	0.01%
405	VICTORIA'S SECRET	43	0.02%	121	0.01%
412	CRAZY MOOSE CASINO	42	0.02%	154	0.01%
412	PUERTO VALLARTA	42	0.02%	126	0.01%
414	AGTOPROF INC	42	0.02%	150	0.01%
415	NORTHSHORE SCHOOL DISTRICT	41	0.02%	140	0.01%
415	PROLOGIX DISTRIBUTION	41	0.02%	101	0.01%
415	TRANS OCEAN PRODUCTS	41	0.02%	160	0.01%
418	BLACK ANGUS	41	0.02%	142	0.01%
418	LA FITNESS	41	0.02%	138	0.01%
418	SWIFT TRANSPORTATION	41	0.02%	161	0.01%
421	ADVANCE AMERICA	40	0.02%	151	0.01%
421	BIG 5 SPORTING GOODS	40	0.02%	117	0.01%
421	PLANNED PARENTHOOD	40	0.02%	147	0.01%
421	SHILO INNS	40	0.02%	147	0.01%
421	T MOBILE	40	0.02%	120	0.01%
421	TACOMA COMMUNITY COLLEGE	40	0.02%	184	0.01%
427	BANNER BANK	40	0.02%	108	0.01%
427	WEYERHAEUSER COMPANY LIMITED	40	0.02%	160	0.01%
429	AGRIMACS	39	0.02%	128	0.01%
429	HASTINGS ENTERTAINMENT	39	0.02%	97	0.00%
429	WEST VALLEY SCHOOL DISTRICT	39	0.02%	129	0.01%
432	ARMY NATIONAL GUARD	39	0.02%	125	0.01%
432	COAST SEAFOODS	39	0.02%	113	0.01%
432	EVERGREEN HEALTH CARE	39	0.02%	129	0.01%
432	ST JOSEPH MEDICAL CENTER	39	0.02%	170	0.01%
432	WASTE MANAGEMENT	39	0.02%	173	0.01%
437	CHIAWANA ORCHARDS	38	0.02%	160	0.01%
437	DEPT OF TRANSPORTATION	38	0.02%	160	0.01%
437	EVERETT CLINIC	38	0.02%	129	0.01%
437	RANDSTAND	38	0.02%	123	0.01%
441	EMPIRE HEALTH SERVICES	38	0.02%	134	0.01%
441	HIGHLINE COMMUNITY COLLEGE	38	0.02%	137	0.01%
441	KENNEWICK GENERAL HOSPITAL	38	0.02%	141	0.01%
441	PIERCE COLLEGE	38	0.02%	154	0.01%
441	SALLY'S BEAUTY SUPPLY	38	0.02%	120	0.01%
441	TOPPENISH SCHOOL DISTRICT	38	0.02%	143	0.01%
447	BRIGHT HORIZONS	37	0.02%	114	0.01%
447	LITTLE CAESARS	37	0.02%	111	0.01%
447	OSTROM FARMS	37	0.02%	118	0.01%
447	REGENCE BLUE SHIELD	37	0.02%	134	0.01%
447	SNOQUALMIE CASINO	37	0.02%	129	0.01%
452	MMP ORCHARDS	37	0.02%	128	0.01%
452	PERSONNEL SOURCE	37	0.02%	148	0.01%
452	RESIDENTIAL RESOURCES	37	0.02%	138	0.01%
452	ST JOHNS MEDICAL CENTER	37	0.02%	128	0.01%
452	UPPER SKAGIT INDIAN TRIBE	37	0.02%	137	0.01%
452	WAPATO SCHOOL DISTRICT	37	0.02%	139	0.01%
452	WESTERN STATE HOSPITAL	37	0.02%	175	0.01%
459	AMERICAN MANAGEMENT	36	0.02%	149	0.01%

Rank of Firms by Number of DSHS Medical Clients, High to Low

(Ranking Based on the January and June 2009 Number of Associated DSHS Medical Clients)

Rank	Employer	Average Number of Employed Clients/Persons	Percent of Total Employed Clients/Persons	Number of Associated DSHS Member Months, Jan and June	Percent of Total Associated DSHS Member Months, Jan and June
459	BELLINGHAM SCHOOL DISTRICT	36	0.02%	95	0.00%
459	JANICKI INDUSTRIES	36	0.02%	137	0.01%
459	ORANGE CAB	36	0.02%	160	0.01%
459	TESORO CORPORATION	36	0.02%	138	0.01%
464	ROMAN CASINO	36	0.02%	124	0.01%
464	YAKIMA NEIGHBORHOOD HEALTH	36	0.02%	131	0.01%
466	CHIPOTLE MEXICAN GRILL	35	0.01%	95	0.00%
466	IRONHORSE CASINO	35	0.01%	106	0.01%
468	BOISE CASCADE	35	0.01%	144	0.01%
468	FAMOUS DAVES	35	0.01%	114	0.01%
468	WILLOW DRIVE NURSERY	35	0.01%	169	0.01%
471	JOHN L SCOTT	34	0.01%	120	0.01%
471	LA CLINICA	34	0.01%	135	0.01%
471	MAZATLAN RESTAURANT	34	0.01%	108	0.01%
471	MT ADAMS ORCHARDS	34	0.01%	143	0.01%
471	NATIONAL GUARD	34	0.01%	107	0.01%
471	PEOPLE FOR PEOPLE	34	0.01%	139	0.01%
471	SCAFCO CORPORATION	34	0.01%	143	0.01%
471	STARPLEX	34	0.01%	117	0.01%
479	AAFES	34	0.01%	110	0.01%
479	LINCARE	34	0.01%	139	0.01%
479	ROCHE FRUIT	34	0.01%	98	0.01%
479	SMART TALENT	34	0.01%	130	0.01%
479	TRIUMPH TREATMENT	34	0.01%	120	0.01%
479	WIS INTERNATIONAL	34	0.01%	96	0.00%
485	BELLEVUE SCHOOL DISTRICT	33	0.01%	113	0.01%
485	CARLISLE INTERCONNECT TECHNOLOGIES	33	0.01%	98	0.01%
485	EVERETT SCHOOL DISTRICT	33	0.01%	99	0.01%
485	LAKELAND VILLAGE	33	0.01%	149	0.01%
485	POLYCLINIC	33	0.01%	116	0.01%
490	CHILDRENS VILLAGE	33	0.01%	126	0.01%
490	GARDEN VILLAGE	33	0.01%	108	0.01%
490	JELD-WEN	33	0.01%	126	0.01%
490	SYKES	33	0.01%	101	0.01%
490	WENATCHEE VALLEY CLINIC	33	0.01%	118	0.01%
495	COCA COLA	32	0.01%	142	0.01%
495	FRANKLIN PIERCE SCHOOL DISTRICT	32	0.01%	105	0.01%
495	GOLDEN CORRAL	32	0.01%	119	0.01%
495	GOTTSCHALKS	32	0.01%	79	0.00%
495	OFFICE MAX	32	0.01%	102	0.01%
495	ROYAL PARK CARE CENTER	32	0.01%	112	0.01%
495	TOTAL CARE	32	0.01%	168	0.01%
495	WALLA WALLA SCHOOL DISTRICT	32	0.01%	107	0.01%
503	DEL MONTE	32	0.01%	125	0.01%
503	EVERGREEN HOSPITAL	32	0.01%	103	0.01%
503	FASHION LADY BUG	32	0.01%	97	0.00%
503	HERTZ	32	0.01%	144	0.01%
503	WASHINGTON CRAB	32	0.01%	141	0.01%
508	BIG BEND COMMUNITY COLLEGE	31	0.01%	120	0.01%
508	EAKIN FRUIT	31	0.01%	97	0.00%
508	FIRST AID ONLY	31	0.01%	123	0.01%

Rank of Firms by Number of DSHS Medical Clients, High to Low

(Ranking Based on the January and June 2009 Number of Associated DSHS Medical Clients)

Rank	Employer	Average Number of Employed Clients/Persons	Percent of Total Employed Clients/Persons	Number of Associated DSHS Member Months, Jan and June	Percent of Total Associated DSHS Member Months, Jan and June
508	HIGHLINE MEDICAL CENTER	31	0.01%	104	0.01%
512	CBHA	31	0.01%	117	0.01%
512	KINDRED NURSING CENTERS	31	0.01%	109	0.01%
512	SPOKANE MENTAL HEALTH	31	0.01%	113	0.01%
512	ST MICHELLE WINE ESTATES	31	0.01%	110	0.01%
512	STANDARD PARKING	31	0.01%	113	0.01%
512	WHATCOM COUNTY	31	0.01%	101	0.01%
518	BRIGGS NURSERY	30	0.01%	104	0.01%
518	CENTRAL WASHINGTON UNIVERSITY	30	0.01%	121	0.01%
518	EMPLOYER'S OVERLOAD	30	0.01%	91	0.00%
518	MINI SKOOL	30	0.01%	110	0.01%
518	RICHLAND SCHOOL DISTRICT	30	0.01%	114	0.01%
518	TORERO MEXICAN RESTAURANT	30	0.01%	111	0.01%
518	TRIPLE B CORP	30	0.01%	104	0.01%
518	VA HOSPITAL	30	0.01%	115	0.01%
518	WCAP	30	0.01%	86	0.00%
527	CENTRAL WA COMP MENTAL HEALTH	30	0.01%	102	0.01%
527	CHRISTINE ALEXANDER INC	30	0.01%	97	0.00%
527	EDMONDS COMMUNITY COLLEGE	30	0.01%	102	0.01%
527	NORTHWEST STAFFING	30	0.01%	95	0.00%
527	TAQUERIA EL RINCONSITO	30	0.01%	97	0.00%
532	ANDERSON HAY & GRAIN CO	29	0.01%	134	0.01%
532	COLUMBIA BASIN HEALTH	29	0.01%	116	0.01%
532	COMMAND CENTER INC	29	0.01%	125	0.01%
532	EASTERN WASHINGTON UNIVERSITY	29	0.01%	113	0.01%
532	HUMANIX	29	0.01%	102	0.01%
532	INDEPENDENT FOOD	29	0.01%	93	0.00%
532	MAKAH TRIBAL COUNCIL	29	0.01%	109	0.01%
532	VEOLIA TRANSPORTATION	29	0.01%	110	0.01%
540	CENTERPLATE	29	0.01%	96	0.00%
540	CHEESECAKE FACTORY	29	0.01%	103	0.01%
540	EMERALD CARE	29	0.01%	107	0.01%
540	KYLE MATHISON ORCHARDS	29	0.01%	98	0.01%
540	MUKILTEO SCHOOL DISTRICT	29	0.01%	125	0.01%
540	SAFECO	29	0.01%	124	0.01%
546	AIR SERV CORP	28	0.01%	99	0.01%
546	ALPINE WAY	28	0.01%	115	0.01%
546	C&D ZODIAC, INC	28	0.01%	129	0.01%
546	DURHAM SCHOOL SERVICES	28	0.01%	111	0.01%
546	US CENSUS BUREAU	28	0.01%	137	0.01%
551	BECHTEL	28	0.01%	172	0.01%
551	CHECK MATE	28	0.01%	97	0.00%
551	DAL GLOBAL SERVICES	28	0.01%	176	0.01%
551	LANDMARK CARE CENTER	28	0.01%	116	0.01%
551	LONGVIEW SCHOOL DISTRICT	28	0.01%	93	0.00%
551	NORTHWEST RESTAURANTS	28	0.01%	88	0.00%
551	THE CLEANING AUTHORITY	28	0.01%	104	0.01%
551	WESTERN MATERIALS	28	0.01%	125	0.01%
551	YAKIMA VALLEY COMMUNITY COLLEGE	28	0.01%	95	0.00%
560	CASCADE CALL WORKS	27	0.01%	96	0.00%
560	IMS	27	0.01%	105	0.01%

Rank of Firms by Number of DSHS Medical Clients, High to Low

(Ranking Based on the January and June 2009 Number of Associated DSHS Medical Clients)

Rank	Employer	Average Number of Employed Clients/Persons	Percent of Total Employed Clients/Persons	Number of Associated DSHS Member Months, Jan and June	Percent of Total Associated DSHS Member Months, Jan and June
560	OCHOA FOODS	27	0.01%	129	0.01%
560	SENSKE	27	0.01%	104	0.01%
564	CHRISTENSEN SHIPYARDS	27	0.01%	159	0.01%
564	LIBERTY COUNTRY PLACE	27	0.01%	108	0.01%
564	PAML	27	0.01%	108	0.01%
564	PUGET SOUND NAVAL SHIPYARD	27	0.01%	135	0.01%
564	SONIC	27	0.01%	80	0.00%
569	CHEWELAH CASINO	26	0.01%	99	0.01%
569	GONZAGA UNIVERSITY	26	0.01%	128	0.01%
569	J&B ORCHARDS	26	0.01%	127	0.01%
569	PROVIDENCE HEALTH	26	0.01%	87	0.00%
569	ST MARY MEDICAL CENTER	26	0.01%	101	0.01%
574	ATLAS CASTINGS	26	0.01%	124	0.01%
574	SKAMANIA LODGE	26	0.01%	101	0.01%
576	LYNDEN DOOR INC	25	0.01%	133	0.01%
576	NEIGHBORHOOD HOUSE	25	0.01%	112	0.01%
576	NORTH THURSTON SCHOOL DISTRICT	25	0.01%	98	0.01%
576	SOUND PUBLISHING	25	0.01%	93	0.00%
576	SPOKANE INDUSTRIES	25	0.01%	116	0.01%
576	YAKAMA FOREST PRODUCTS	25	0.01%	114	0.01%
582	BUILDER SERVICES GROUP	25	0.01%	106	0.01%
582	HARMONY HOUSE	25	0.01%	97	0.00%
582	KELLER WILLIAMS REALTY	25	0.01%	94	0.00%
582	OXFORD SUITES	25	0.01%	91	0.00%
582	RPM	25	0.01%	100	0.01%
582	TEUFEL NURSERY INC	25	0.01%	117	0.01%
582	TUMWATER SCHOOL DISTRICT	25	0.01%	97	0.00%
589	ANDERSEN DAIRY	24	0.01%	110	0.01%
589	MAID PRO	24	0.01%	92	0.00%
589	MAR-JON	24	0.01%	91	0.00%
589	MINER'S DRIVE-IN	24	0.01%	94	0.00%
589	SENIOR SERVICES	24	0.01%	94	0.00%
594	JACK FROST	24	0.01%	82	0.00%
594	OIL CAN HENRY'S	24	0.01%	96	0.00%
596	STAFFORD HEALTHCARE	23	0.01%	88	0.00%
597	CABELAS	23	0.01%	82	0.00%
597	CWI SECURITY	23	0.01%	94	0.00%
597	MOLLY MAID	23	0.01%	94	0.00%
597	SUMMIT DRYWALL INC	23	0.01%	96	0.00%
597	THURSTON COUNTY	23	0.01%	100	0.01%
602	CCAP	22	0.01%	90	0.00%
602	CIPV	22	0.01%	84	0.00%
602	SAMARITAN HOSPITAL	22	0.01%	106	0.01%
602	SHAW VINEYARDS	22	0.01%	82	0.00%
602	STERLING INTERNATIONAL	22	0.01%	134	0.01%
607	ROYAL TURF FARMS	22	0.01%	107	0.01%
607	ST FRANCIS HOSPITAL	22	0.01%	88	0.00%
607	WORLD VISION	22	0.01%	103	0.01%
610	CAREER PATH SERVICES	21	0.01%	101	0.01%
611	ALEXANDRIA MOULDING	21	0.01%	105	0.01%
611	CONRAD ORCHARDS	21	0.01%	88	0.00%

Rank of Firms by Number of DSHS Medical Clients, High to Low

(Ranking Based on the January and June 2009 Number of Associated DSHS Medical Clients)

Rank	Employer	Average Number of Employed Clients/Persons	Percent of Total Employed Clients/Persons	Number of Associated DSHS Member Months, Jan and June	Percent of Total Associated DSHS Member Months, Jan and June
611	DIRECT TV	21	0.01%	107	0.01%
611	FERGUSON ENTERPRISES	21	0.01%	98	0.01%
611	LIBERTY DAIRY	21	0.01%	122	0.01%
616	BROADWAY CAB	20	0.01%	140	0.01%
616	KITSAP COMMUNITY RESOURCES	20	0.01%	111	0.01%
616	MILLENNIA HEALTHCARE	20	0.01%	96	0.00%
616	OLYMPIC MEDICAL CENTER	20	0.01%	90	0.00%
616	STITA TAXI	20	0.01%	94	0.00%
621	JOHNSON FOODS	20	0.01%	76	0.00%
621	SELECT STAFFING	20	0.01%	67	0.00%
623	COLUMBIA DISTRIBUTING	19	0.01%	87	0.00%
624	GENERAL DYNAMICS	19	0.01%	101	0.01%
624	MARLEY ORCHARDS	19	0.01%	88	0.00%
624	PRINCE TELECOM INC	19	0.01%	104	0.01%
627	FRITO-LAY	18	0.01%	96	0.00%
628	OPPORTUNITY COUNCIL	17	0.01%	88	0.00%
629	D & L FOUNDRY	17	0.01%	100	0.01%
630	BOB'S NEW CONSTRUCTION	16	0.01%	84	0.00%
631	HABITAT FOR HUMANITY	16	0.01%	94	0.00%
632	GOLDEN GATE HOP RANCHES	15	0.01%	68	0.00%
632	KAISER ALUMINUM	15	0.01%	98	0.01%
634	PRAIRIE ELECTRIC	14	0.01%	134	0.01%
635	RAINCITY CONTRACTORS	13	0.01%	74	0.00%
635	THURMAN QUALITY JANITOR	13	0.01%	108	0.01%
637	GUNDERSON, INC	11	0.00%	103	0.01%
638	HALME CONSTRUCTION	9	0.00%	97	0.00%

0. WASHINGTON STATE ROLL-UP

Clients or persons with dependents with DSHS medical coverage, by type of DSHS coverage

Associated DSHS medical clients and estimated DSHS HRSA medical and mental health expenditures

PREPARED BY: DSHS Research and Data Analysis Division, December 2009

DSHS employed clients and their DSHS-covered dependents

	January 2009	June 2009
Number of Employed Clients	77,005	76,656
Number Employed 0-91 Days with Firm	10,118	10,704
Number Employed 92-365 Days with Firm	26,613	27,158
Number Employed 366+ Days with Firm	40,274	38,794
Associated DSHS Medical Clients	137,443	138,466
Family Medical	96,117	98,083
Children's Medical and SCHIP	16,805	16,161
Pregnant Women	12,201	11,927
Persons with Disabilities	10,753	10,750
Other Coverage	1,567	1,545
Monthly HRSA Expenditures - All Funds	\$47,017,116	\$47,118,668
General Fund-State	\$18,637,812	\$18,718,737
General Fund-Federal	\$27,441,026	\$27,496,925
Health Services Account	\$938,278	\$903,005

Non-client persons with DSHS-covered dependents

	January 2009	June 2009
Number of Employed Persons	173,289	180,253
Number Employed 0-91 Days with Firm	5,652	6,862
Number Employed 92-365 Days with Firm	29,580	34,525
Number Employed 366+ Days with Firm	138,057	138,866
Associated DSHS Medical Clients	309,549	319,406
Family Medical	11,882	13,000
Children's Medical and SCHIP	288,195	297,192
Pregnant Women	7,884	7,652
Persons with Disabilities	1,352	1,326
Other Coverage	236	236
Monthly HRSA Expenditures - All Funds	\$61,345,566	\$63,270,431
General Fund-State	\$9,922,484	\$9,927,807
General Fund-Federal	\$36,037,530	\$37,300,690
Health Services Account	\$15,385,551	\$16,041,934

TOTAL

	January 2009	June 2009
Number of Employed Clients/Persons	250,294	256,909
Number Employed 0-91 Days with Firm	15,770	17,566
Number Employed 92-365 Days with Firm	56,193	61,683
Number Employed 366+ Days with Firm	178,331	177,660
Associated DSHS Medical Clients	446,992	457,872
Family Medical	107,999	111,083
Children's Medical and SCHIP	305,000	313,353
Pregnant Women	20,085	19,579
Persons with Disabilities	12,105	12,076
Other Coverage	1,803	1,781
Monthly HRSA Expenditures - All Funds	\$108,362,682	\$110,389,099
General Fund-State	\$28,560,297	\$28,646,544
General Fund-Federal	\$63,478,557	\$64,797,616
Health Services Account	\$16,323,829	\$16,944,939

DATA SOURCES: This report is based on the analysis of Automated Client Eligibility System (ACES) employer name data linked to Medicaid Management Information System eligibility data. ACES employer name information does not permit the identification of separately owned franchises operating under the same business name. The employer name information used in this report is self-reported; it is not a required element of the application for public assistance and is not independently verified by DSHS.

1. WAL-MART STORES INC

Clients or persons with dependents with DSHS medical coverage, by type of DSHS coverage

Associated DSHS medical clients and estimated DSHS HRSA medical and mental health expenditures

PREPARED BY: DSHS Research and Data Analysis Division, December 2009

DSHS employed clients and their DSHS-covered dependents

	January 2009	June 2009
Number of Employed Clients	1,046	991
Number Employed 0-91 Days with Firm	162	128
Number Employed 92-365 Days with Firm	346	338
Number Employed 366+ Days with Firm	538	525
Associated DSHS Medical Clients	2,149	2,005
Family Medical	1,540	1,425
Children's Medical and SCHIP	270	237
Pregnant Women	216	197
Persons with Disabilities	113	135
Other Coverage	10	11
Monthly HRSA Expenditures - All Funds	\$724,556	\$687,417
General Fund-State	\$280,450	\$268,575
General Fund-Federal	\$428,536	\$405,093
Health Services Account	\$15,570	\$13,749

Non-client persons with DSHS-covered dependents

	January 2009	June 2009
Number of Employed Persons	2,061	2,148
Number Employed 0-91 Days with Firm	67	44
Number Employed 92-365 Days with Firm	308	335
Number Employed 366+ Days with Firm	1,686	1,769
Associated DSHS Medical Clients	3,548	3,639
Family Medical	79	58
Children's Medical and SCHIP	3,368	3,482
Pregnant Women	68	60
Persons with Disabilities	28	31
Other Coverage	5	8
Monthly HRSA Expenditures - All Funds	\$709,832	\$723,073
General Fund-State	\$90,185	\$87,131
General Fund-Federal	\$427,343	\$435,823
Health Services Account	\$192,304	\$200,120

TOTAL

	January 2009	June 2009
Number of Employed Clients/Persons	3,107	3,139
Number Employed 0-91 Days with Firm	229	172
Number Employed 92-365 Days with Firm	654	673
Number Employed 366+ Days with Firm	2,224	2,294
Associated DSHS Medical Clients	5,697	5,644
Family Medical	1,619	1,483
Children's Medical and SCHIP	3,638	3,719
Pregnant Women	284	257
Persons with Disabilities	141	166
Other Coverage	15	19
Monthly HRSA Expenditures - All Funds	\$1,434,388	\$1,410,490
General Fund-State	\$370,636	\$355,706
General Fund-Federal	\$855,878	\$840,916
Health Services Account	\$207,874	\$213,869

DATA SOURCES: This report is based on the analysis of Automated Client Eligibility System (ACES) employer name data linked to Medicaid Management Information System eligibility data. ACES employer name information does not permit the identification of separately owned franchises operating under the same business name. The employer name information used in this report is self-reported; it is not a required element of the application for public assistance and is not independently verified by DSHS.

2. MCDONALDS CORPORATION

Clients or persons with dependents with DSHS medical coverage, by type of DSHS coverage

Associated DSHS medical clients and estimated DSHS HRSA medical and mental health expenditures

PREPARED BY: DSHS Research and Data Analysis Division, December 2009

DSHS employed clients and their DSHS-covered dependents

	January 2009	June 2009
Number of Employed Clients	1,221	1,284
Number Employed 0-91 Days with Firm	137	121
Number Employed 92-365 Days with Firm	407	484
Number Employed 366+ Days with Firm	677	679
Associated DSHS Medical Clients	1,482	1,475
Family Medical	917	855
Children's Medical and SCHIP	249	285
Pregnant Women	220	230
Persons with Disabilities	84	94
Other Coverage	12	11
Monthly HRSA Expenditures - All Funds	\$541,441	\$543,385
General Fund-State	\$208,752	\$209,463
General Fund-Federal	\$319,121	\$318,693
Health Services Account	\$13,568	\$15,229

Non-client persons with DSHS-covered dependents

	January 2009	June 2009
Number of Employed Persons	1,078	1,134
Number Employed 0-91 Days with Firm	61	34
Number Employed 92-365 Days with Firm	182	238
Number Employed 366+ Days with Firm	835	862
Associated DSHS Medical Clients	1,718	1,877
Family Medical	176	205
Children's Medical and SCHIP	1,518	1,651
Pregnant Women	19	14
Persons with Disabilities	3	4
Other Coverage	2	3
Monthly HRSA Expenditures - All Funds	\$321,342	\$346,726
General Fund-State	\$67,221	\$74,727
General Fund-Federal	\$180,772	\$193,450
Health Services Account	\$73,349	\$78,550

TOTAL

	January 2009	June 2009
Number of Employed Clients/Persons	2,299	2,418
Number Employed 0-91 Days with Firm	198	155
Number Employed 92-365 Days with Firm	589	722
Number Employed 366+ Days with Firm	1,512	1,541
Associated DSHS Medical Clients	3,200	3,352
Family Medical	1,093	1,060
Children's Medical and SCHIP	1,767	1,936
Pregnant Women	239	244
Persons with Disabilities	87	98
Other Coverage	14	14
Monthly HRSA Expenditures - All Funds	\$862,784	\$890,111
General Fund-State	\$275,973	\$284,190
General Fund-Federal	\$499,893	\$512,143
Health Services Account	\$86,918	\$93,778

DATA SOURCES: This report is based on the analysis of Automated Client Eligibility System (ACES) employer name data linked to Medicaid Management Information System eligibility data. ACES employer name information does not permit the identification of separately owned franchises operating under the same business name. The employer name information used in this report is self-reported; it is not a required element of the application for public assistance and is not independently verified by DSHS.

3. SAFEWAY

Clients or persons with dependents with DSHS medical coverage, by type of DSHS coverage

Associated DSHS medical clients and estimated DSHS HRSA medical and mental health expenditures

PREPARED BY: DSHS Research and Data Analysis Division, December 2009

DSHS employed clients and their DSHS-covered dependents

	January 2009	June 2009
Number of Employed Clients	812	806
Number Employed 0-91 Days with Firm	77	74
Number Employed 92-365 Days with Firm	252	245
Number Employed 366+ Days with Firm	483	487
Associated DSHS Medical Clients	1,035	1,005
Family Medical	618	588
Children's Medical and SCHIP	111	115
Pregnant Women	103	84
Persons with Disabilities	200	215
Other Coverage	3	3
Monthly HRSA Expenditures - All Funds	\$408,089	\$397,671
General Fund-State	\$162,591	\$157,576
General Fund-Federal	\$239,563	\$233,916
Health Services Account	\$5,935	\$6,180

Non-client persons with DSHS-covered dependents

	January 2009	June 2009
Number of Employed Persons	718	785
Number Employed 0-91 Days with Firm	16	20
Number Employed 92-365 Days with Firm	131	129
Number Employed 366+ Days with Firm	571	636
Associated DSHS Medical Clients	1,196	1,298
Family Medical	27	33
Children's Medical and SCHIP	1,143	1,245
Pregnant Women	18	14
Persons with Disabilities	7	6
Other Coverage	1	0
Monthly HRSA Expenditures - All Funds	\$234,265	\$250,773
General Fund-State	\$28,594	\$28,169
General Fund-Federal	\$140,519	\$150,994
Health Services Account	\$65,152	\$71,610

TOTAL

	January 2009	June 2009
Number of Employed Clients/Persons	1,530	1,591
Number Employed 0-91 Days with Firm	93	94
Number Employed 92-365 Days with Firm	383	374
Number Employed 366+ Days with Firm	1,054	1,123
Associated DSHS Medical Clients	2,231	2,303
Family Medical	645	621
Children's Medical and SCHIP	1,254	1,360
Pregnant Women	121	98
Persons with Disabilities	207	221
Other Coverage	4	3
Monthly HRSA Expenditures - All Funds	\$642,354	\$648,444
General Fund-State	\$191,186	\$185,745
General Fund-Federal	\$380,082	\$384,909
Health Services Account	\$71,086	\$77,790

DATA SOURCES: This report is based on the analysis of Automated Client Eligibility System (ACES) employer name data linked to Medicaid Management Information System eligibility data. ACES employer name information does not permit the identification of separately owned franchises operating under the same business name. The employer name information used in this report is self-reported; it is not a required element of the application for public assistance and is not independently verified by DSHS.

4. YUM! BRANDS INC

Clients or persons with dependents with DSHS medical coverage, by type of DSHS coverage

Associated DSHS medical clients and estimated DSHS HRSA medical and mental health expenditures

PREPARED BY: DSHS Research and Data Analysis Division, December 2009

DSHS employed clients and their DSHS-covered dependents

	January 2009	June 2009
Number of Employed Clients	591	632
Number Employed 0-91 Days with Firm	75	82
Number Employed 92-365 Days with Firm	237	259
Number Employed 366+ Days with Firm	279	291
Associated DSHS Medical Clients	730	818
Family Medical	478	549
Children's Medical and SCHIP	114	117
Pregnant Women	86	92
Persons with Disabilities	48	58
Other Coverage	4	2
Monthly HRSA Expenditures - All Funds	\$258,356	\$289,172
General Fund-State	\$98,919	\$112,055
General Fund-Federal	\$152,836	\$170,408
Health Services Account	\$6,601	\$6,709

Non-client persons with DSHS-covered dependents

	January 2009	June 2009
Number of Employed Persons	471	480
Number Employed 0-91 Days with Firm	29	15
Number Employed 92-365 Days with Firm	102	126
Number Employed 366+ Days with Firm	340	339
Associated DSHS Medical Clients	776	782
Family Medical	93	77
Children's Medical and SCHIP	669	690
Pregnant Women	10	11
Persons with Disabilities	3	3
Other Coverage	1	1
Monthly HRSA Expenditures - All Funds	\$153,039	\$152,164
General Fund-State	\$28,699	\$27,656
General Fund-Federal	\$89,049	\$88,141
Health Services Account	\$35,291	\$36,366

TOTAL

	January 2009	June 2009
Number of Employed Clients/Persons	1,062	1,112
Number Employed 0-91 Days with Firm	104	97
Number Employed 92-365 Days with Firm	339	385
Number Employed 366+ Days with Firm	619	630
Associated DSHS Medical Clients	1,506	1,600
Family Medical	571	626
Children's Medical and SCHIP	783	807
Pregnant Women	96	103
Persons with Disabilities	51	61
Other Coverage	5	3
Monthly HRSA Expenditures - All Funds	\$411,395	\$441,335
General Fund-State	\$127,618	\$139,711
General Fund-Federal	\$241,885	\$258,550
Health Services Account	\$41,893	\$43,075

DATA SOURCES: This report is based on the analysis of Automated Client Eligibility System (ACES) employer name data linked to Medicaid Management Information System eligibility data. ACES employer name information does not permit the identification of separately owned franchises operating under the same business name. The employer name information used in this report is self-reported; it is not a required element of the application for public assistance and is not independently verified by DSHS.

5. THE KROGER CO

Clients or persons with dependents with DSHS medical coverage, by type of DSHS coverage

Associated DSHS medical clients and estimated DSHS HRSA medical and mental health expenditures

PREPARED BY: DSHS Research and Data Analysis Division, December 2009

DSHS employed clients and their DSHS-covered dependents

	January 2009	June 2009
Number of Employed Clients	512	445
Number Employed 0-91 Days with Firm	55	29
Number Employed 92-365 Days with Firm	175	128
Number Employed 366+ Days with Firm	282	288
Associated DSHS Medical Clients	726	596
Family Medical	438	360
Children's Medical and SCHIP	103	74
Pregnant Women	110	90
Persons with Disabilities	70	70
Other Coverage	5	2
Monthly HRSA Expenditures - All Funds	\$274,893	\$233,976
General Fund-State	\$107,119	\$92,330
General Fund-Federal	\$161,962	\$137,440
Health Services Account	\$5,811	\$4,206

Non-client persons with DSHS-covered dependents

	January 2009	June 2009
Number of Employed Persons	595	610
Number Employed 0-91 Days with Firm	19	15
Number Employed 92-365 Days with Firm	100	93
Number Employed 366+ Days with Firm	476	502
Associated DSHS Medical Clients	996	1,031
Family Medical	27	13
Children's Medical and SCHIP	956	1,001
Pregnant Women	10	14
Persons with Disabilities	2	3
Other Coverage	1	0
Monthly HRSA Expenditures - All Funds	\$190,240	\$198,426
General Fund-State	\$20,648	\$21,326
General Fund-Federal	\$114,712	\$119,685
Health Services Account	\$54,879	\$57,415

TOTAL

	January 2009	June 2009
Number of Employed Clients/Persons	1,107	1,055
Number Employed 0-91 Days with Firm	74	44
Number Employed 92-365 Days with Firm	275	221
Number Employed 366+ Days with Firm	758	790
Associated DSHS Medical Clients	1,722	1,627
Family Medical	465	373
Children's Medical and SCHIP	1,059	1,075
Pregnant Women	120	104
Persons with Disabilities	72	73
Other Coverage	6	2
Monthly HRSA Expenditures - All Funds	\$465,133	\$432,402
General Fund-State	\$127,767	\$113,656
General Fund-Federal	\$276,675	\$257,125
Health Services Account	\$60,690	\$61,621

DATA SOURCES: This report is based on the analysis of Automated Client Eligibility System (ACES) employer name data linked to Medicaid Management Information System eligibility data. ACES employer name information does not permit the identification of separately owned franchises operating under the same business name. The employer name information used in this report is self-reported; it is not a required element of the application for public assistance and is not independently verified by DSHS.

6. JACK IN THE BOX

Clients or persons with dependents with DSHS medical coverage, by type of DSHS coverage

Associated DSHS medical clients and estimated DSHS HRSA medical and mental health expenditures

PREPARED BY: DSHS Research and Data Analysis Division, December 2009

DSHS employed clients and their DSHS-covered dependents

	January 2009	June 2009
Number of Employed Clients	384	368
Number Employed 0-91 Days with Firm	42	32
Number Employed 92-365 Days with Firm	119	124
Number Employed 366+ Days with Firm	223	212
Associated DSHS Medical Clients	502	521
Family Medical	276	282
Children's Medical and SCHIP	107	116
Pregnant Women	92	96
Persons with Disabilities	26	26
Other Coverage	1	1
Monthly HRSA Expenditures - All Funds	\$189,857	\$195,983
General Fund-State	\$71,987	\$74,400
General Fund-Federal	\$111,989	\$115,466
Health Services Account	\$5,881	\$6,118

Non-client persons with DSHS-covered dependents

	January 2009	June 2009
Number of Employed Persons	509	530
Number Employed 0-91 Days with Firm	25	9
Number Employed 92-365 Days with Firm	74	102
Number Employed 366+ Days with Firm	410	419
Associated DSHS Medical Clients	815	839
Family Medical	66	61
Children's Medical and SCHIP	739	760
Pregnant Women	8	12
Persons with Disabilities	2	6
Other Coverage	0	0
Monthly HRSA Expenditures - All Funds	\$149,437	\$158,467
General Fund-State	\$31,344	\$33,635
General Fund-Federal	\$83,218	\$88,562
Health Services Account	\$34,875	\$36,270

TOTAL

	January 2009	June 2009
Number of Employed Clients/Persons	893	898
Number Employed 0-91 Days with Firm	67	41
Number Employed 92-365 Days with Firm	193	226
Number Employed 366+ Days with Firm	633	631
Associated DSHS Medical Clients	1,317	1,360
Family Medical	342	343
Children's Medical and SCHIP	846	876
Pregnant Women	100	108
Persons with Disabilities	28	32
Other Coverage	1	1
Monthly HRSA Expenditures - All Funds	\$339,294	\$354,451
General Fund-State	\$103,331	\$108,035
General Fund-Federal	\$195,207	\$204,028
Health Services Account	\$40,756	\$42,388

DATA SOURCES: This report is based on the analysis of Automated Client Eligibility System (ACES) employer name data linked to Medicaid Management Information System eligibility data. ACES employer name information does not permit the identification of separately owned franchises operating under the same business name. The employer name information used in this report is self-reported; it is not a required element of the application for public assistance and is not independently verified by DSHS.

7. ZIRKLE FRUIT COMPANY

Clients or persons with dependents with DSHS medical coverage, by type of DSHS coverage

Associated DSHS medical clients and estimated DSHS HRSA medical and mental health expenditures

PREPARED BY: DSHS Research and Data Analysis Division, December 2009

DSHS employed clients and their DSHS-covered dependents

	January 2009	June 2009
Number of Employed Clients	90	90
Number Employed 0-91 Days with Firm	12	30
Number Employed 92-365 Days with Firm	36	28
Number Employed 366+ Days with Firm	42	32
Associated DSHS Medical Clients	161	161
Family Medical	123	111
Children's Medical and SCHIP	21	29
Pregnant Women	10	16
Persons with Disabilities	6	2
Other Coverage	1	3
Monthly HRSA Expenditures - All Funds	\$49,106	\$49,501
General Fund-State	\$19,683	\$19,487
General Fund-Federal	\$28,668	\$28,791
Health Services Account	\$755	\$1,223

Non-client persons with DSHS-covered dependents

	January 2009	June 2009
Number of Employed Persons	628	781
Number Employed 0-91 Days with Firm	26	120
Number Employed 92-365 Days with Firm	100	132
Number Employed 366+ Days with Firm	502	529
Associated DSHS Medical Clients	1,249	1,459
Family Medical	90	163
Children's Medical and SCHIP	1,117	1,245
Pregnant Women	36	45
Persons with Disabilities	6	5
Other Coverage	0	1
Monthly HRSA Expenditures - All Funds	\$248,019	\$294,206
General Fund-State	\$52,685	\$67,977
General Fund-Federal	\$140,772	\$166,544
Health Services Account	\$54,561	\$59,684

TOTAL

	January 2009	June 2009
Number of Employed Clients/Persons	718	871
Number Employed 0-91 Days with Firm	38	150
Number Employed 92-365 Days with Firm	136	160
Number Employed 366+ Days with Firm	544	561
Associated DSHS Medical Clients	1,410	1,620
Family Medical	213	274
Children's Medical and SCHIP	1,138	1,274
Pregnant Women	46	61
Persons with Disabilities	12	7
Other Coverage	1	4
Monthly HRSA Expenditures - All Funds	\$297,125	\$343,706
General Fund-State	\$72,368	\$87,464
General Fund-Federal	\$169,441	\$195,335
Health Services Account	\$55,316	\$60,908

DATA SOURCES: This report is based on the analysis of Automated Client Eligibility System (ACES) employer name data linked to Medicaid Management Information System eligibility data. ACES employer name information does not permit the identification of separately owned franchises operating under the same business name. The employer name information used in this report is self-reported; it is not a required element of the application for public assistance and is not independently verified by DSHS.

8. SEARS HOLDINGS CORPORATION

Clients or persons with dependents with DSHS medical coverage, by type of DSHS coverage

Associated DSHS medical clients and estimated DSHS HRSA medical and mental health expenditures

PREPARED BY: DSHS Research and Data Analysis Division, December 2009

DSHS employed clients and their DSHS-covered dependents

	January 2009	June 2009
Number of Employed Clients	400	363
Number Employed 0-91 Days with Firm	68	45
Number Employed 92-365 Days with Firm	150	149
Number Employed 366+ Days with Firm	182	169
Associated DSHS Medical Clients	709	643
Family Medical	543	458
Children's Medical and SCHIP	92	95
Pregnant Women	37	47
Persons with Disabilities	33	40
Other Coverage	4	3
Monthly HRSA Expenditures - All Funds	\$219,441	\$209,168
General Fund-State	\$84,141	\$80,067
General Fund-Federal	\$129,925	\$123,570
Health Services Account	\$5,375	\$5,530

Non-client persons with DSHS-covered dependents

	January 2009	June 2009
Number of Employed Persons	315	321
Number Employed 0-91 Days with Firm	27	16
Number Employed 92-365 Days with Firm	67	81
Number Employed 366+ Days with Firm	221	224
Associated DSHS Medical Clients	472	488
Family Medical	24	4
Children's Medical and SCHIP	435	468
Pregnant Women	9	10
Persons with Disabilities	3	5
Other Coverage	1	1
Monthly HRSA Expenditures - All Funds	\$95,147	\$98,835
General Fund-State	\$13,521	\$12,855
General Fund-Federal	\$56,993	\$59,239
Health Services Account	\$24,634	\$26,742

TOTAL

	January 2009	June 2009
Number of Employed Clients/Persons	715	684
Number Employed 0-91 Days with Firm	95	61
Number Employed 92-365 Days with Firm	217	230
Number Employed 366+ Days with Firm	403	393
Associated DSHS Medical Clients	1,181	1,131
Family Medical	567	462
Children's Medical and SCHIP	527	563
Pregnant Women	46	57
Persons with Disabilities	36	45
Other Coverage	5	4
Monthly HRSA Expenditures - All Funds	\$314,588	\$308,003
General Fund-State	\$97,662	\$92,922
General Fund-Federal	\$186,918	\$182,809
Health Services Account	\$30,009	\$32,272

DATA SOURCES: This report is based on the analysis of Automated Client Eligibility System (ACES) employer name data linked to Medicaid Management Information System eligibility data. ACES employer name information does not permit the identification of separately owned franchises operating under the same business name. The employer name information used in this report is self-reported; it is not a required element of the application for public assistance and is not independently verified by DSHS.

9. TRIARC COMPANIES INC

Clients or persons with dependents with DSHS medical coverage, by type of DSHS coverage

Associated DSHS medical clients and estimated DSHS HRSA medical and mental health expenditures

PREPARED BY: DSHS Research and Data Analysis Division, December 2009

DSHS employed clients and their DSHS-covered dependents

	January 2009	June 2009
Number of Employed Clients	388	362
Number Employed 0-91 Days with Firm	62	47
Number Employed 92-365 Days with Firm	135	146
Number Employed 366+ Days with Firm	191	169
Associated DSHS Medical Clients	491	470
Family Medical	282	290
Children's Medical and SCHIP	97	89
Pregnant Women	75	58
Persons with Disabilities	37	33
Other Coverage	0	0
Monthly HRSA Expenditures - All Funds	\$181,430	\$165,025
General Fund-State	\$69,227	\$62,885
General Fund-Federal	\$106,885	\$97,056
Health Services Account	\$5,317	\$5,085

Non-client persons with DSHS-covered dependents

	January 2009	June 2009
Number of Employed Persons	296	324
Number Employed 0-91 Days with Firm	13	7
Number Employed 92-365 Days with Firm	56	64
Number Employed 366+ Days with Firm	227	253
Associated DSHS Medical Clients	458	495
Family Medical	44	31
Children's Medical and SCHIP	403	457
Pregnant Women	9	5
Persons with Disabilities	2	2
Other Coverage	0	0
Monthly HRSA Expenditures - All Funds	\$88,592	\$91,373
General Fund-State	\$19,432	\$17,618
General Fund-Federal	\$49,865	\$51,337
Health Services Account	\$19,295	\$22,418

TOTAL

	January 2009	June 2009
Number of Employed Clients/Persons	684	686
Number Employed 0-91 Days with Firm	75	54
Number Employed 92-365 Days with Firm	191	210
Number Employed 366+ Days with Firm	418	422
Associated DSHS Medical Clients	949	965
Family Medical	326	321
Children's Medical and SCHIP	500	546
Pregnant Women	84	63
Persons with Disabilities	39	35
Other Coverage	0	0
Monthly HRSA Expenditures - All Funds	\$270,022	\$256,399
General Fund-State	\$88,660	\$80,503
General Fund-Federal	\$156,750	\$148,393
Health Services Account	\$24,612	\$27,503

DATA SOURCES: This report is based on the analysis of Automated Client Eligibility System (ACES) employer name data linked to Medicaid Management Information System eligibility data. ACES employer name information does not permit the identification of separately owned franchises operating under the same business name. The employer name information used in this report is self-reported; it is not a required element of the application for public assistance and is not independently verified by DSHS.

10. TARGET CORPORATION

Clients or persons with dependents with DSHS medical coverage, by type of DSHS coverage

Associated DSHS medical clients and estimated DSHS HRSA medical and mental health expenditures

PREPARED BY: DSHS Research and Data Analysis Division, December 2009

DSHS employed clients and their DSHS-covered dependents

	January 2009	June 2009
Number of Employed Clients	342	303
Number Employed 0-91 Days with Firm	58	20
Number Employed 92-365 Days with Firm	95	110
Number Employed 366+ Days with Firm	189	173
Associated DSHS Medical Clients	570	489
Family Medical	391	321
Children's Medical and SCHIP	82	76
Pregnant Women	55	48
Persons with Disabilities	38	39
Other Coverage	4	5
Monthly HRSA Expenditures - All Funds	\$195,562	\$171,327
General Fund-State	\$75,222	\$66,383
General Fund-Federal	\$115,647	\$100,605
Health Services Account	\$4,693	\$4,339

Non-client persons with DSHS-covered dependents

	January 2009	June 2009
Number of Employed Persons	330	350
Number Employed 0-91 Days with Firm	26	8
Number Employed 92-365 Days with Firm	59	87
Number Employed 366+ Days with Firm	245	255
Associated DSHS Medical Clients	514	546
Family Medical	28	13
Children's Medical and SCHIP	480	527
Pregnant Women	6	5
Persons with Disabilities	0	1
Other Coverage	0	0
Monthly HRSA Expenditures - All Funds	\$97,946	\$103,486
General Fund-State	\$12,913	\$11,221
General Fund-Federal	\$58,363	\$62,271
Health Services Account	\$26,670	\$29,995

TOTAL

	January 2009	June 2009
Number of Employed Clients/Persons	672	653
Number Employed 0-91 Days with Firm	84	28
Number Employed 92-365 Days with Firm	154	197
Number Employed 366+ Days with Firm	434	428
Associated DSHS Medical Clients	1,084	1,035
Family Medical	419	334
Children's Medical and SCHIP	562	603
Pregnant Women	61	53
Persons with Disabilities	38	40
Other Coverage	4	5
Monthly HRSA Expenditures - All Funds	\$293,508	\$274,813
General Fund-State	\$88,135	\$77,604
General Fund-Federal	\$174,010	\$162,876
Health Services Account	\$31,363	\$34,334

DATA SOURCES: This report is based on the analysis of Automated Client Eligibility System (ACES) employer name data linked to Medicaid Management Information System eligibility data. ACES employer name information does not permit the identification of separately owned franchises operating under the same business name. The employer name information used in this report is self-reported; it is not a required element of the application for public assistance and is not independently verified by DSHS.

Additional copies of this report may be obtained from: www.dshs.wa.gov/rda.